

# Pests of vegetables



**Pests of Tomato**

**Pests of Brinjal**

**Pests of Chilli**

**Pests of Bhendi**

**Pests of Onion**

**Pests of Moringa**

**Pests of Cucurbits**

**Pests of cole crops**

**Pests of Potato**

**Pests of Sweet Potato**

**Pests of Tapioca**

**Pests of Amaranthus**

## Pest of Tomato



**Fruit Borer: *Helicoverpa armigera***



Larval damage



Larval damage



Adult damaged fruit



Egg



Larva



Pupa



Adult

Serpentine leaf miner: *Liriomyza trifolii*



Mining in the leaf



Adult

## Leaf eating caterpillar: *Spodoptera litura*



Larval feeding



Scrabbing



Foliar damage



Flower damage



Larva





**Whitefly: *Bemisia tabaci***



Fruit damage



Nymphs and adult



Eggs and Adult

**Thrips: *Thrips tabaci*, *F. rankliniella***



Nymph



Adult



Symptom

**Striped mealybug: *Ferrisia virgata***



Mealy bug on tomato plants

**Red spider mite: *Tetranychus spp***



Infestation on tomato



Red spider mite

## Pests of Brinjal



## Stem borer: *Euzophera perticella*



Symptoms of damage



Adult



Larva

Shoot and fruit borer: *Leucinodes orbonalis*











**Hadda / spotted beetle: *H.vigintioito punctata***



Skeletonized - Grub Damage



Grub and Adult

**Ash weevils: *Myloccerus subfasciatus*, *M. discolor*, *M. viridanus***



Symptom



*M. subfasciatus*



*M. discolor*



*M. viridanus*

**Brown leaf hopper: *Cestius phycitis***



Little leaf of brinjal



Adult



Little leaf of brinjal



Lace wing bug: *Urentius hystricellus*



Affected leaves covered with excreta



Yellowing



Adult

## Pests of Chilli



**Chilli thrips: *Scirtothrips dorsalis***



Chilli thrips infestation - upward curling



Adult

**Green peach aphid: *Myzus persicae***



Green peach aphid infestation - Crinkling



Nymphs



Adult

**Gram caterpillar: *Helicoverpa armigera***



Larva

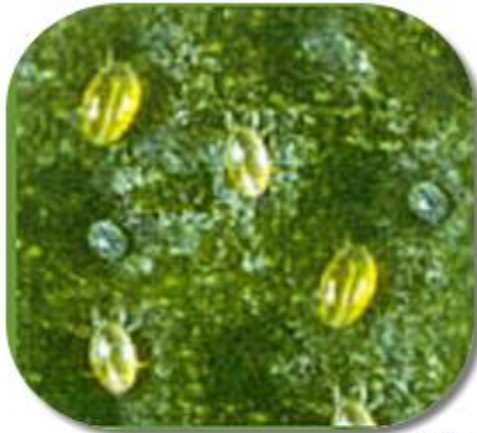


Adult





**Yellow mite or muranai**  
mite: *Polyphagotarsonemus latus*



Yellow mite - Adult





Yellow mite infestation - downward curling of leaves

## Pests of Bhendi



Shoot and fruit borer: *Earias vitella*, *E. insulana*



Larvae of *E. vitella* feeding on okra fruit



Eggs of *E. vitella* laid on okra fruit



Larva



Adult



Symptom

**Bhendi fruit borer: *Helicoverpa armigera***



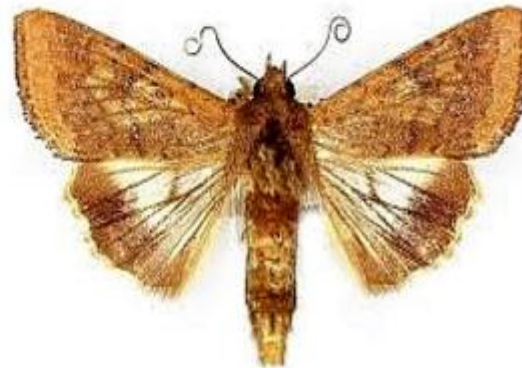
Egg



Larva



Pupa



Adult



Symptom

Shoot weevil: *Alcidodes affaber*



Egg



Grub



Adult





Bore hole on shoot



Infected terminal shoot



Adults feed on terminal shoots

**Stem weevil: *Pempherulus affinis***



**Grub feed on stem**



Adult

Leaf roller: *Sylepta derogata*



Rolled leaves



Adult

**Semilooper: *Anomis flava***



Larva



Pupa



Adult

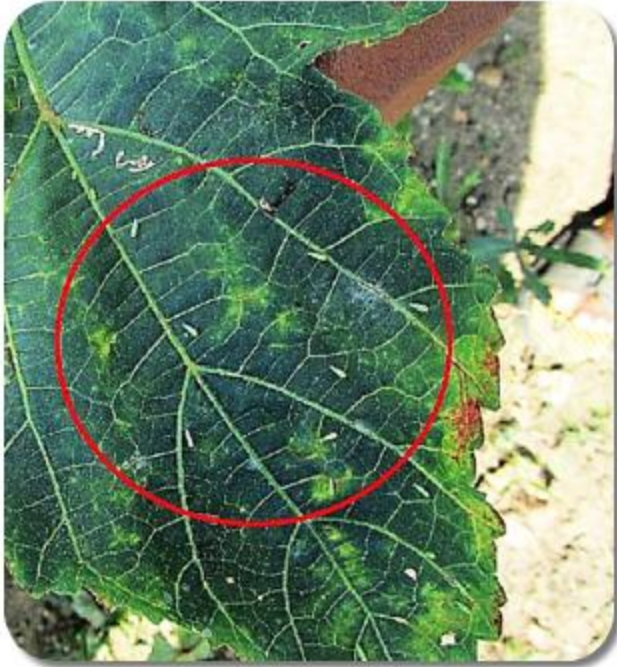
**Jassids: *Amrasca devastans***



Nymph



Adult



Symptom



**Aphid: *Aphis gossypii***



Red cotton bug: *Dysdercus cingulatus*



Nymph

Nymph



Adult

Adult

## Pests of Onion



**Onion Thrips: *Thrips tabaci***



**Drying**



**White silvery patches**



**Nymph**



**Adult**

## Onion Fly: *Delia antiqua*



உருமாறிய வளர்ச்சி



அழகுதல்



முட்டை



புழு



பூச்சி

**Ear wig: *Euborellia annulipes***



**Eggs of *E. vitella***



**Adult**







## Pests of Moringa



**Bud worm: *Noorda moringae***



**Leaf caterpillar: *Noorda blitealis***



**Hairy caterpillar *Eupterote mollifera***



**Adult**

**Pod fly: *Gitona distigma***



Adult

**Bark caterpillar: *Indarbela tetraonis***



Bore hole damage



Adult

## Pests of Cucurbits



**Fruit flies: *Bactrocera cucurbitae***



Brownish internal tissue



Stunted fruit





Adult



Infected fruit



Split on fruit

**Pumpkin beetles: Red Beetle: *Aulacophora foveicollis*, Purple beetle: *A. cincta*, Ash beetle: *A. Intermedia***



Symptom



Adult

Stem borer or clear winged moth: *Melittia eurytion*



Symptoms

**Stem gall fly: *Neolasioptera falcata***



Adult

Snake gourd semilooper: *Plusia peponis*



Larva



Adult

**Pumpkin caterpillar: *Diaphania indica***



Larva



Adult

**Bottle gourd plume moth: *Sphenarches caffer***



Adult



Leaf miner: *Liriomyza trifolii*



Leaf mining

## Pests of cole crops



**Diamond back moth: *Plutella xylostella***



*Affected curd*

*Scrabbing the leaves*



*Larva*

*Adult*

**Cabbage borer: *Hellula undalis***



Webbing



Bore hole on the stem



Larvae



Adult

**Leaf webber: *Crocidolomia binotalis***



Larval webbing the head



Larval scabbing the leaves



Larva



Adult

**Cabbage green semilooper: *Trichoplusia ni***



Larva



Adult

**Cabbage butterfly: *Pieris brassicae*, *P. rapae***



Egg



Larva



Pupa



Adult

**Cabbage aphid: *Brevicoryne brassicae***



Larva



Adult



**Mustard aphid: *Lipaphis erysimi***



Leaf mining

## Pests of Potato



**Greasy Cutworm/ Black cut worm: *Agrotis ipsilon***



Larva

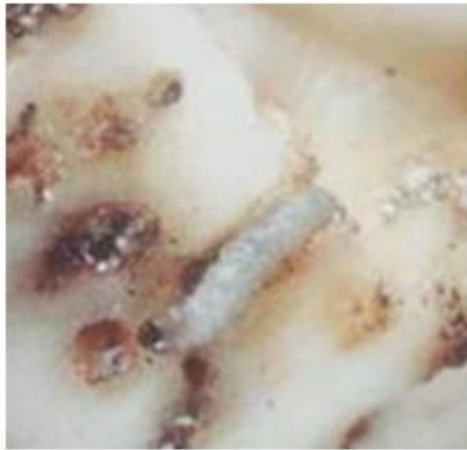


Adult

Potato tuber moth: *Phthorimaea operculella*



Potato tuber moth infested tuber



Potato tuber moth infested tuber



Potato tuber moth Infested leaves



Larva



Adult

**Green Leaf Hopper *Empoasca kerri***



**White grubs: *Holotrichia* sp.**



## Pests of Sweet Potato





## Sweet potato weevil: *Cylas formicarius*

Larval feeding



Infested tuber



Larva



Adult



**Tortoise beetles: *Aspidiomorpha miliaris*, *Cassida circumdata***



Damage caused by adult Tortoise beetle



Papery translucent patches



Larvae



Adult

## Pests of Tapioca



**Spiralling whitefly: *Aleurodicus dispersus***









**Whitefly: *Bemisia tabaci***





**Cassava scale: *Aonidomytilus albus***





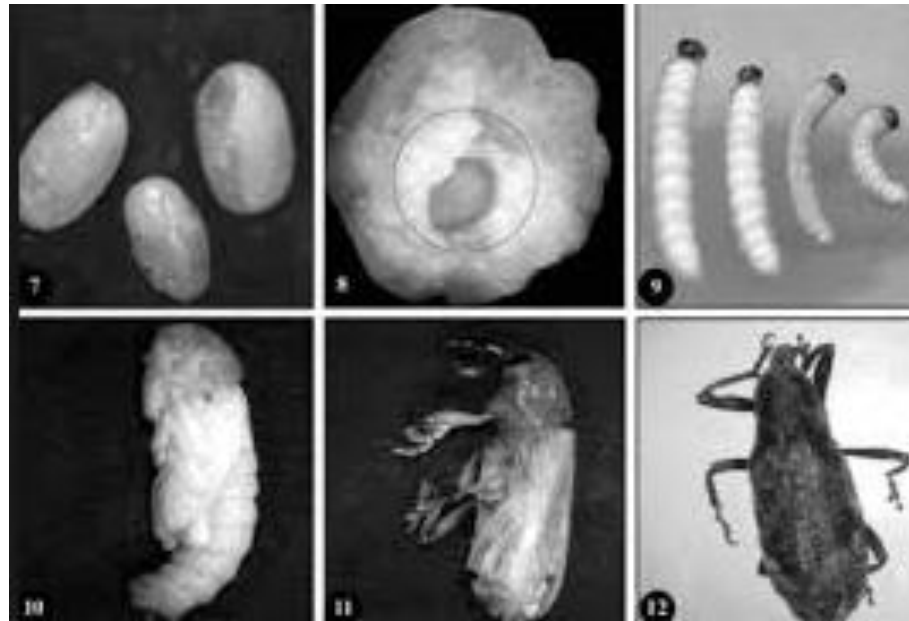
**Cassava mealy bug: *Paracoccus marginatus***



## Pests of Amaranthus



**Amaranthus weevil: *Hypolixus truncatulus***





Leaf caterpillar: *Hymenia recurvalis*



Drying and webbing



Adult

**Leaf webber: *Psara basalis***







Thank you