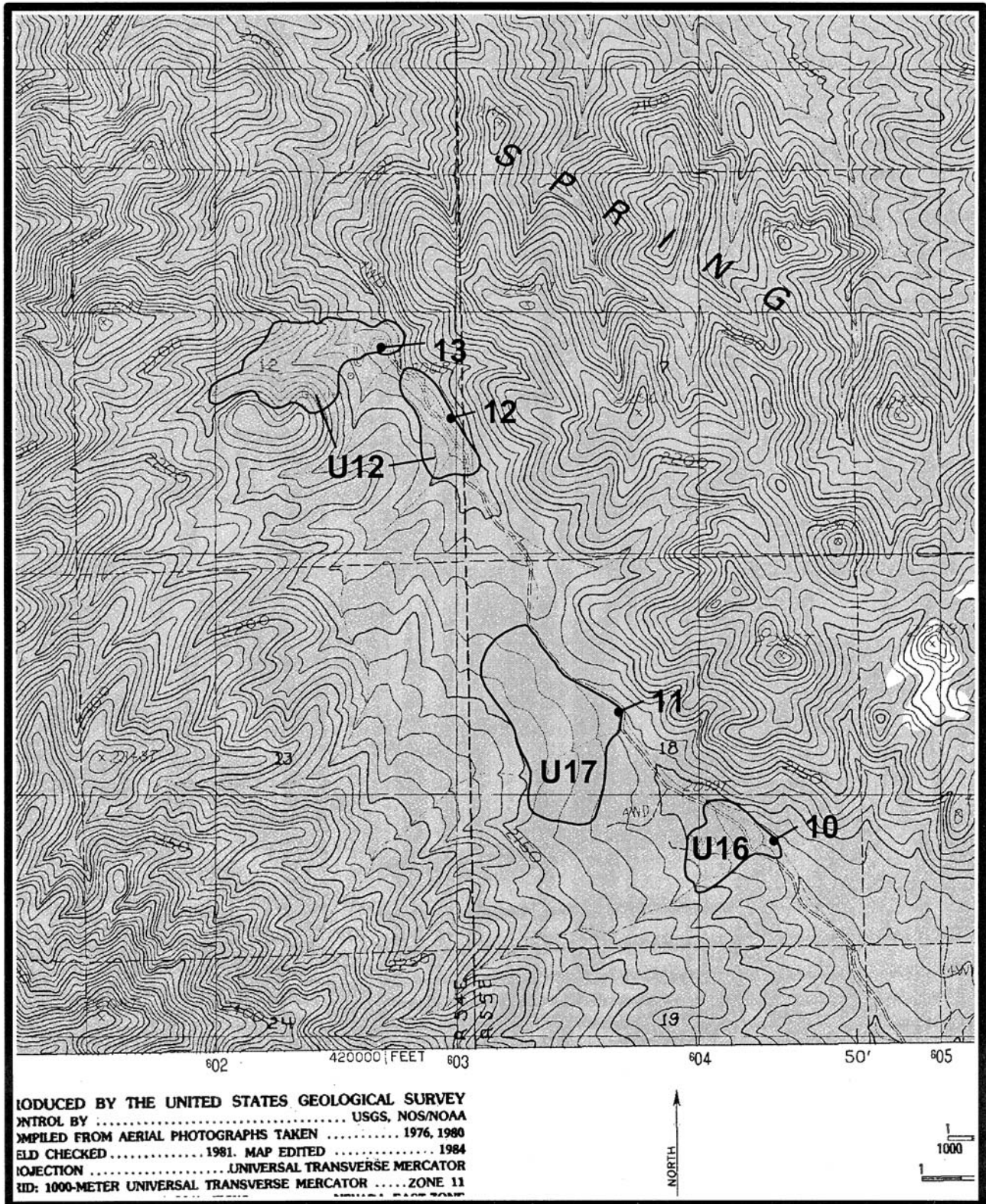
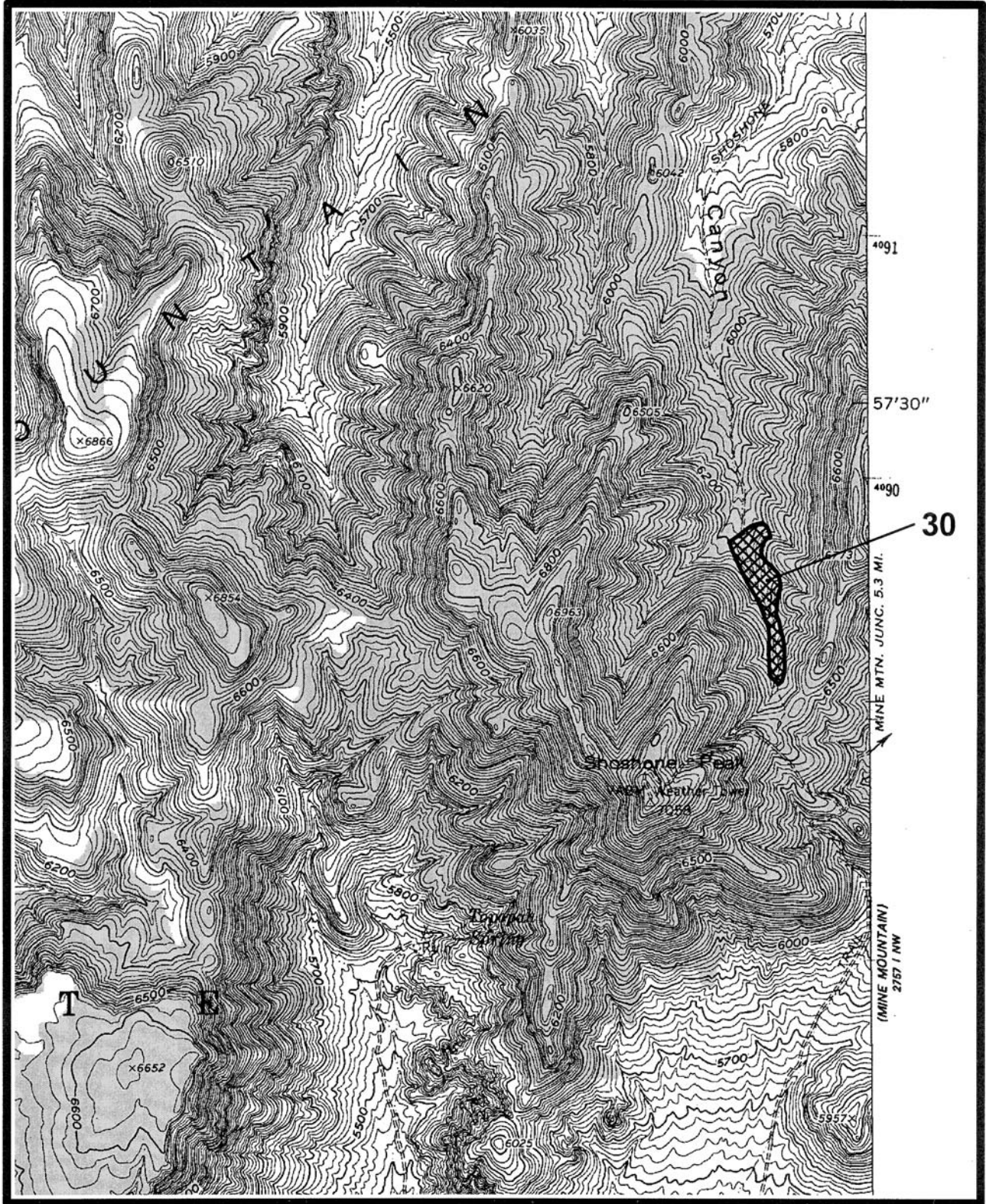


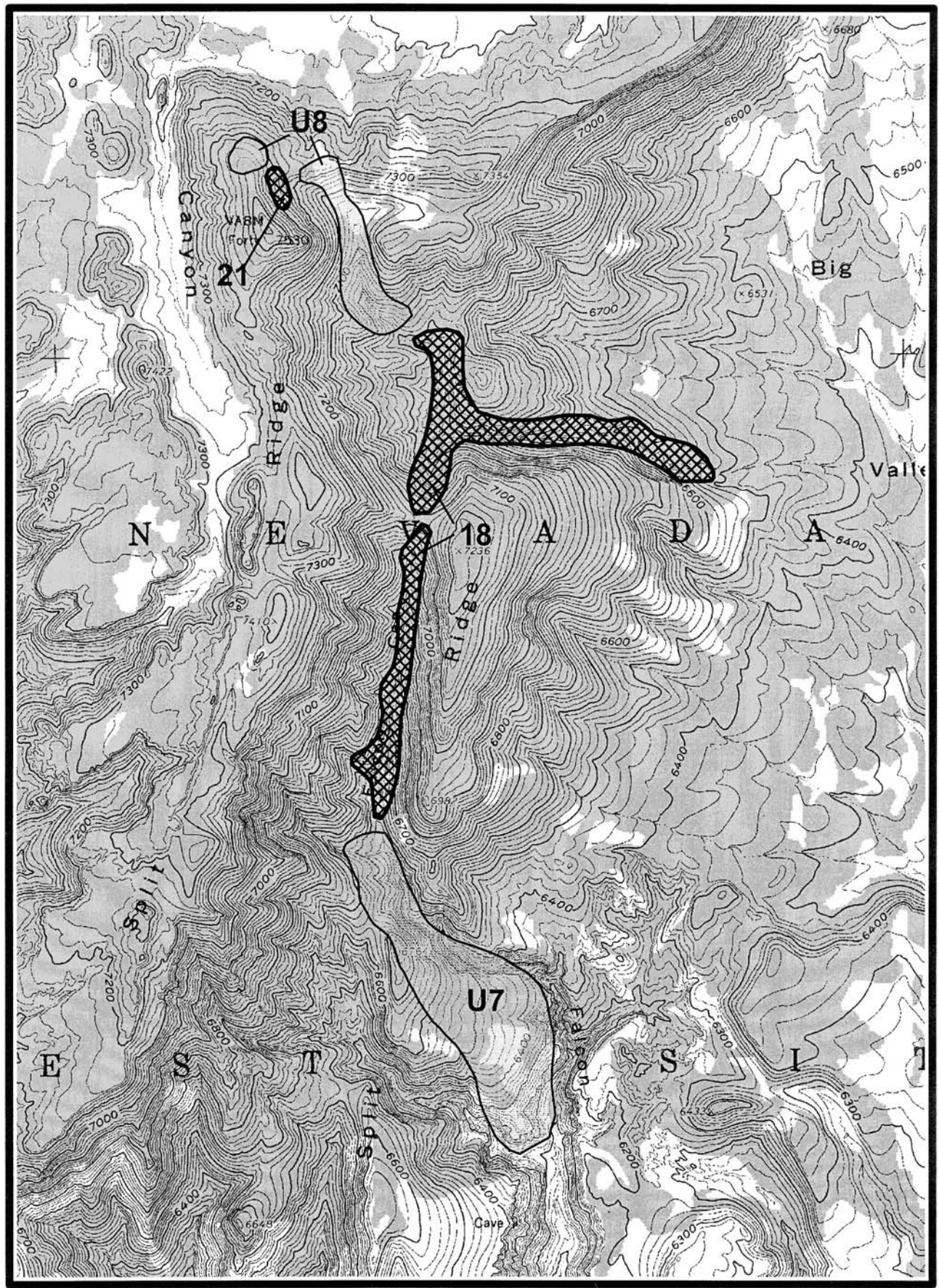
Map 8. Wheeler Pass area. *Astragalus oophorus* var. *clokeyanus* site 5, estimated historical site 2, and unoccupied sites U1-U3, Willow Peak and Wheeler Well 1:24,000 quadrangles, Clark County, Nevada.



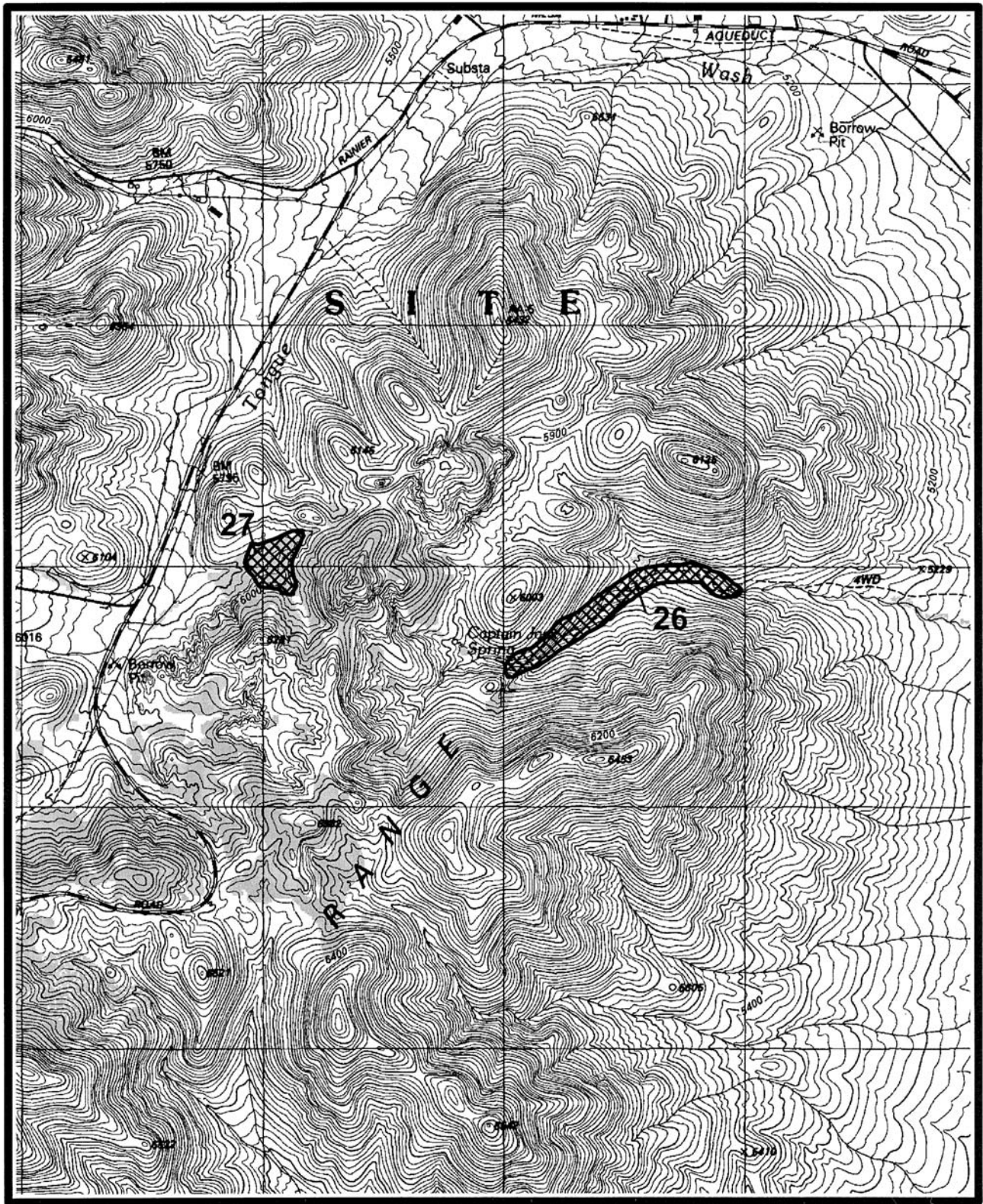
Map 9. Upper Wheeler Well Road area. *Astragalus oophorus* var. *clokeyanus* sites 10-13 and unoccupied sites U12, U16, and U17, Willow Peak 1:24,000 quadrangle, Clark County, Nevada.



Map 10. Shoshone Peak area. *Astragalus oophorus* var. *clokeyanus* site 30, Topopah Spring 1:24,000 quadrangle, Nye County, Nevada.



Map 12. Split Ridge area. *Astragalus oophorus* var. *clokeyanus* sites 18 and 21, and unoccupied sites U7 and U8, Ammonia Tanks 1:24,000 quadrangle, Nye County, Nevada.



Map 13. Captain Jack Springs area. *Astragalus oophorus* var. *clokeyanus* sites 26 and 27, Rainier Mesa 1:24,000 quadrangle, Nye County, Nevada.