

IDENTITY GROUP



 **PORELON**[®]



Calculator | pages 1-2

Cash Register | pages 3-6

Printer | pages 7-12

Typewriter | pages 13-16

Calculator



Monroe Marc II - Size: 7/16"

Item #	Color	Qty Per Pack	Replaces Manufacture Part #'s	Packaging	Master Pack
11325	Black/Red	1	E275-NT, 7341253, 416, P71	Generic	72



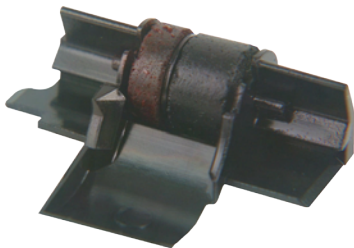
PR-12

Item #	Color	Qty Per Pack	Replaces Manufacture Part #'s	Packaging	Inner Pack	Master Pack
11201	Purple	1	CP-12, IR-10, EA-732R, 013111	Porelon	6	24
11213	Purple	2	CP-12, IR-10, EA-732R, 013111	Porelon	6	24
302	Purple	5	CP-12, IR-10, EA-732R, 013111	Generic	50	2,000
11601	Purple	1	CP-12, IR-10, EA-732R, 013111	Porelon Fr/Eng	6	144



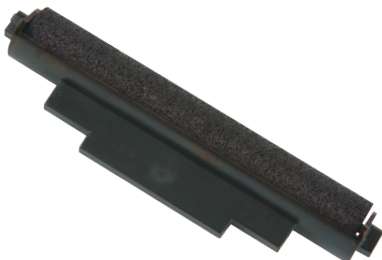
PR-40

Item #	Color	Qty Per Pack	Replaces Manufacture Part #'s	Packaging	Inner Pack	Master Pack
11202	Black	1	CP-16, IR-30, IR-40, EA-770R, IR-55030, 013109	Porelon	6	72
304	Black	5	CP-16, IR-30, IR-40, EA-770R, IR-55030, 013109	Generic	50	2,000
11602	Black	1	CP-16, IR-30, IR-40, EA-770R, IR-55030, 013109	Porelon Fr/Eng	6	144



PR-42

Item #	Color	Qty Per Pack	Replaces Manufacture Part #'s	Packaging	Inner Pack	Master Pack
11203	Black/Red	1	CP-13, IR-40T, EA-772R, 013110, AD-4150	Porelon	6	144
11204	Black/Red	2	CP-13, IR-40T, EA-772R, 013110, AD-4150	Porelon	6	144
306	Black/Red	5	CP-13, IR-40T, EA-772R, 013110, AD-4150	Generic	50	2,000



PR-72

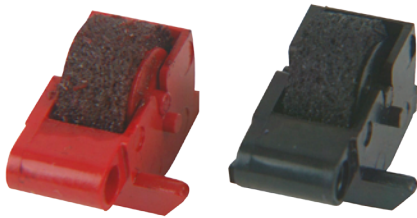
Item #	Color	Qty Per Pack	Replaces Manufacture Part #'s	Packaging	Inner Pack	Master Pack
11205	Black	1	CP-7, IR-72, EA-720R, 75220	Porelon	6	24
308	Black	5	CP-7, IR-72, EA-720R, 75220	Generic	50	1,200
11605	Black	1	CP-7, IR-72, EA-720R, 75220	Porelon Fr/Eng	6	144

Calculator



PR-74

Item #	Color	Qty Per Pack	Replaces Manufacture Part #'s	Packaging	Inner Pack	Master Pack
11206	Black	1	CP-19, IR-74, EA-741R, 75740	Porelon	6	24
11606	Black	1	CP-19, IR-74, EA-741R, 75740	Porelon Fr/Eng	6	144
310	Black	5	CP-19, IR-74, EA-741R, 75740	Generic	50	1,200
11214	Black	2	CP-19, IR-74, EA-741R, 75740	Generic	-	144



PR-78 B/R

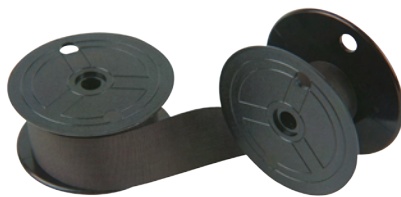
Item #	Color	Qty Per Pack	Replaces Manufacture Part #'s	Packaging	Inner Pack	Master Pack
11207	1 Black 1Red	1 ea. color	CP-17B/R, CP-20, IR-87T, EA-781R	Porelon	6	24
11607	1 Black 1Red	1 ea. color	CP-17B/R, CP-20, IR-87T, EA-781R	Porelon Fr/Eng	6	144



PR-78 / PR-78 P

Item #	Color	Qty Per Pack	Replaces Manufacture Part #'s	Packaging	Inner Pack	Master Pack
311	Black	5	CP-17B, EA-781B	Generic	50	2,000
313	Red	5	CP-17R, EA-781R	Generic	50	2,000
11211	Purple	2	CP-17P, EA-780P	Porelon	6	144

Universal Twin Spool: Size: 1/2"

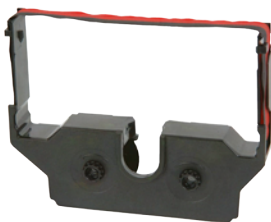


Item #	Color	Qty Per Pack	Replaces Manufacture Part #'s	Packaging Type	Inner Pack	Master Pack
11208	Black	1	GB-02, 013094	Porelon	6	144
11608	Black	1	GB-02, 013094	Porelon Fr/Eng	-	6

Universal Twin Spool: Size: 1/2"



Item #	Color	Qty Per Pack	Replaces Manufacture Part #'s	Packaging	Inner Pack	Master Pack
11209	Black/ Red	1	M-310, RB-2, 013091	Porelon	6	144
11210	Black/ Red	2	M-310, RB-2, 013091	Porelon	6	144
11216	Black/ Red	6	M-310, RB-2, 013091	Porelon	4	72

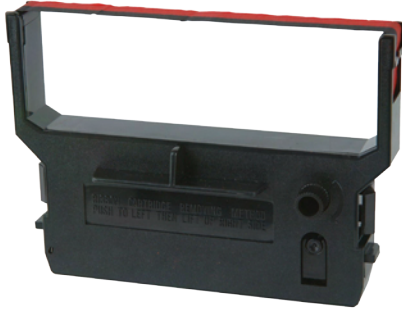


Victor 600/ERC-02: Size: 1/2"

Item #	Color	Qty Per Pack	Replaces Manufacture Part #'s	Packaging	Inner Pack	Master Pack
11212	Black/ Red	1	ERC-02BR, EA-106RC	Generic	-	72
11262	Black/ Red	1	ERC-02BR, EA-106RC	Generic*	-	130

*Non TAA Compliant

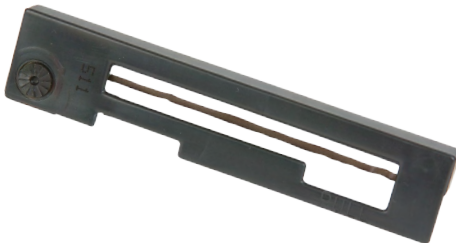
Cash Register



Citizen IR61 / DP600: Size: 1/2" ▼

Item #	Color	Qty Per Pack	Replaces Manufacture Part #'s	Packaging	Inner Pack	Master Pack
11301	Black/Red	1	IR61RB, IR606RB	Porelon	4	72
11765	Black	1	IR61B, IR606B	Generic Fr/Eng	-	6
11351	Black/Red	1	IR61RB, IR606RB	Porelon*	4	24
11378	Black/Red	6	IR61RB, IR606RB	Generic*	-	36

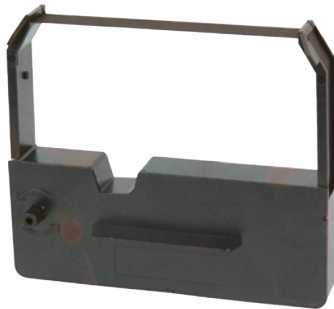
*Non TAA Compliant



Citizen IR91 / CBM910: Size: 5/32" ▼

Item #	Color	Qty Per Pack	Replaces Manufacture Part #'s	Packaging	Inner Pack	Master Pack
11364	Purple	1	IR91P	Generic*	-	150

*Non TAA Compliant



Epson ERC03: Size: 1/2" ▼

Item #	Color	Qty Per Pack	Replaces Manufacture Part #'s	Packaging	Master Pack
11766	Purple	6	20021, ERC03P	Generic Fr/Eng	24

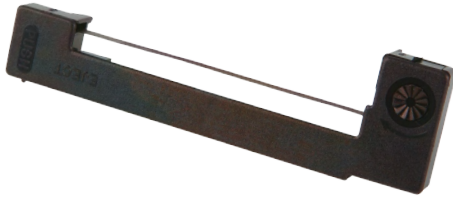
Epson ERC09: Size: 5/32" ▼

Item #	Color	Qty Per Pack	Replaces Manufacture Part #'s	Packaging	Inner Pack	Master Pack
11304	Purple	2	16001, ERC09P	Porelon	6	144
11704	Purple	2	16001, ERC09P	Porelon Fr/Eng	6	144
11329	Purple	6	16001, ERC09P	Generic	-	24
11354	Purple	2	16001, ERC09P	Porelon*	6	144
11379	Purple	6	16001, ERC09P	Generic*	-	36

*Non TAA Compliant



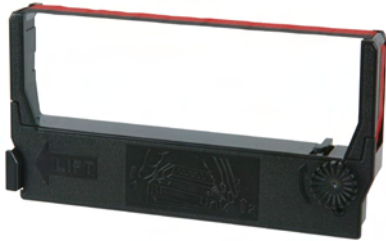
Cash Register



Epson ERC22/40: Size: 5/32" ▼

Item #	Color	Qty Per Pack	Replaces Manufacture Part #'s	Packaging	Inner Pack	Master Pack
11357	Purple	2	013019, 18001, ERC22P, ERC40P	Porelon*	6	24

*Non TAA Compliant



Epson ERC23: Size: 1/2" ▼

Item #	Color	Qty Per Pack	Replaces Manufacture Part #'s	Packaging	Inner Pack	Master Pack
11302	Black/Red	1	ERC23BR	Porelon	4	72
11352	Black/Red	1	ERC23BR	Porelon*	4	72

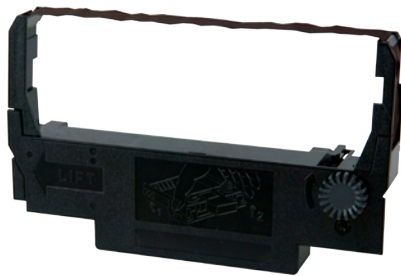
*Non TAA Compliant



Epson ERC27: Size: 3/8" ▼

Item #	Color	Qty Per Pack	Replaces Manufacture Part #'s	Packaging	Master Pack
11319	Purple	1	29001P, ERC27P	Generic	72
11777	Black	1	29001B, ERC27B	Generic Fr/Eng	72

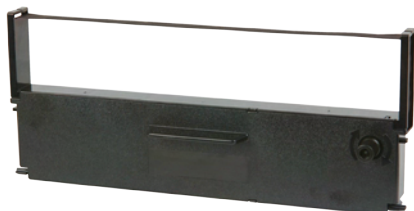
*Non TAA Compliant



Epson ERC30/34/38: Size: 1/2" ▼

Item #	Color	Qty Per Pack	Replaces Manufacture Part #'s	Packaging	Inner Pack	Master Pack
11303	Purple	1	ERC38P	Porelon	4	72
11776	Black	1	ERC38B	Generic Fr/Eng	6	70
11321	Black/Red	6	ERC38BR	Generic	-	6
11353	Purple	1	ERC38P	Porelon*	4	72
11370	Black	6	ERC38B	Generic*	-	6
11371	Black/Red	6	ERC38BR	Generic*	-	6

*Non TAA Compliant



Epson ERC31: Size: 1/2" ▼

Item #	Color	Qty Per Pack	Replaces Manufacture Part #'s	Packaging	Master Pack
11323	Purple	6	ERC31P	Generic	18

*Non TAA Compliant

Cash Register



Epson ERC32: Size: 1/2" ▼

Item #	Color	Qty Per Pack	Replaces Manufacture Part #'s	Packaging	Master Pack
11324	Purple	1	ERC32P	Generic	72
11374	Purple	1	ERC32P	Generic*	150

*Non TAA Compliant



Epson ERC35: Size: 1/2" ▼

Item #	Color	Qty Per Pack	Replaces Manufacture Part #'s	Packaging	Master Pack
11339	Purple	6	ERC35P	Generic	18



IR40 ▼

Item #	Color	Qty Per Pack	Replaces Manufacture Part #'s	Packaging	Inner Pack	Master Pack
11305	Purple	2	CP-16, EA770R, IR-30, 013109, IR-55030	Porelon	6	144



IR90/91/92 ▼

Item #	Color	Qty Per Pack	Replaces Manufacture Part #'s	Packaging	Inner Pack	Master Pack
100276	Purple	1	ER-9091R, 199270, 013116	Generic	-	476
100309	Purple	1	ER-9091R, 199270, 013116	Generic	6	288



IR93 ▼

Item #	Color	Qty Per Pack	Replaces Manufacture Part #'s	Packaging	Inner Pack	Master Pack
11306	Purple	1	527994, 013117	Porelon	6	72
101221	Purple	1	527994, 013117	Generic	6	192

Cash Register



Star Micronics SP200: Size: 1/2"

Item #	Color	Qty Per Pack	Replaces Manufacture Part #'s	Packaging	Inner Pack	Master Pack
11309	Purple	1	RC200P, IR82	Porelon	4	72
11709	Purple	1	RC200P, IR82	Porelon Fr/Eng	4	72
11359	Purple	1	RC200P, IR82	Porelon*	4	24

*Non TAA Compliant



Star Micronics SP300: Size: 1/2"

Item #	Color	Qty Per Pack	Replaces Manufacture Part #'s	Packaging	Inner Pack	Master Pack
11710	Purple	1	RC300P	Generic Fr/Eng	4	72
11380	Purple	6	RC300P	Generic*	-	12

*Non TAA Compliant



TEC MA 135: Size: 1/2"

Item #	Color	Qty Per Pack	Replaces Manufacture Part #'s	Packaging	Master Pack
11334	Purple	1	013115	Generic	72



Universal Twin Spool: Size: 1/2"

Item #	Color	Qty Per Pack	Replaces Manufacture Part #'s	Packaging	Inner Pack	Master Pack
11361	Purple	1	RAP-01, E201-NTP, P65, 125820, 013090	Porelon*	6	24

*Non TAA Compliant

Printer



C. Itoh CI-3500/4000/5000: Size: 1/2" ▼

Item #	Color	Qty Per Pack	Replaces Manufacture Part #'s	Packaging	Master Pack
11520	Black	1	H0944-201A, OPT-710	Generic	18



Citizen 120D / 180D: Size: 5/16" ▼

Item #	Color	Qty Per Pack	Replaces Manufacture Part #'s	Packaging	Inner Pack	Master Pack
11902	Black	1	CAY0810-01A, AH37945-0	Porelon Fr/Eng	4	72
11572	Black	1	CAY0810-01A, AH37945-0	Porelon*	4	24

*Non TAA Compliant



Epson DFX5000/8000: Size: 1/2" ▼

Item #	Color	Qty Per Pack	Replaces Manufacture Part #'s	Packaging	Inner Pack	Master Pack
11531	Black	1	8766	Generic	-	18

*Non TAA Compliant



Epson LQ200/800: Size: 1/2" ▼

Item #	Color	Qty Per Pack	Replaces Manufacture Part #'s	Packaging Type	Inner Pack	Master Pack
11503	Black	1	7753, ERC-19	Porelon	4	144
11573	Black	1	7753, ERC-19	Porelon*	4	24

*Non TAA Compliant



Epson LQ590: Size: 1/2" ▼

Item #	Color	Qty Per Pack	Replaces Manufacture Part #'s	Packaging	Inner Pack	Master Pack
11583	Black	1	S015337	Porelon	6	48
11983	Black	1	S015337	Porelon Fr/Eng	4	16
11683	Black	1	S015337	Porelon*	4	48

*Non TAA Compliant

Printer



Fujitsu DL3700 / DL3800: Size: 1/2" ▼

Item #	Color	Qty Per Pack	Replaces Manufacture Part #'s	Packaging	Master Pack
11537	Black	1	CA02374-C104	Generic	72
11637	Black	1	CA02374-C104	Generic*	120

*Non TAA Compliant



IBM 2380/2390 (with re-inker roll): Size: 5/16" ▼

Item #	Color	Qty Per Pack	Replaces Manufacture Part #'s	Packaging	Inner Pack	Master Pack
11506	Black	1	1040930	Porelon	4	72
11906	Black	1	1040930	Porelon Fr/Eng	4	72
11576	Black	1	1040930	Porelon*	4	24

*Non TAA Compliant



IBM 4224/4230 Model 101/102: Size: 9/16" ▼

Item #	Color	Qty Per Pack	Replaces Manufacture Part #'s	Packaging	Master Pack
11545	Black	1	1040440, 1040580, 6091649	Generic	20
11645	Black	1	1040440, 1040580, 6091649	Generic*	55

*Non TAA Compliant



IBM 6252: Size: 1-1/8" ▼

Item #	Color	Qty Per Pack	Replaces Manufacture Part #'s	Packaging	Master Pack
11549	Black	1	1040780	Generic	24



Okidata ML 80/82: Size: 1/2" ▼

Item #	Color	Qty Per Pack	Replaces Manufacture Part #'s	Packaging	Master Pack
11579	Black	1	52100701	Generic	144

Printer



Okidata ML182/192 (with re-inker roll): Size: 5/16" ▼

Item #	Color	Qty Per Pack	Replaces Manufacture Part #'s	Packaging	Inner Pack	Master Pack
11908	Black	6	52102001	Porelon Fr/Eng	4	72
11507	Black	1	52102001	Porelon	6	72



Okidata ML320/321 (with re-inker roll): Size: 5/16" ▼

Item #	Color	Qty Per Pack	Replaces Manufacture Part #'s	Packaging	Inner Pack	Master Pack
11509	Black	1	52102001	Porelon	6	144
11510	Black	6	52102001	Porelon	4	72
11909	Black	1	52102001	Porelon Fr/Eng	6	144
11910	Black	6	52102001	Porelon Fr/Eng	4	72



Okidata ML390/391 (with re-inker roll): Size: 5/16" ▼

Item #	Color	Qty Per Pack	Replaces Manufacture Part #'s	Packaging	Inner Pack	Master Pack
11511	Black	1	52104001	Porelon	6	144
11911	Black	1	52104001	Porelon Fr/Eng	6	144



Okidata ML393/395: Size: 1/2" ▼

Item #	Color	Qty Per Pack	Replaces Manufacture Part #'s	Packaging	Inner Pack	Master Pack
11512	Black	1	52103601	Porelon	4	48
11912	Black	1	52103601	Generic Fr/Eng	4	48

*Non TAA Compliant

Printer



Okidata ML420/421/490 (with re-inker roll): Size: 1/2" ▼

Item #	Color	Qty Per Pack	Replaces Manufacture Part #'s	Packaging	Inner Pack	Master Pack
11568	Black	1	42377801	Generic	6	144
11582	Black	1	42377801	Porelon	6	144
11982	Black	1	42377801	Porelon Fr/Eng	6	144



Okidata ML590/591 (with re-inker roll): Size: 1/2" ▼

Item #	Color	Qty Per Pack	Replaces Manufacture Part #'s	Packaging Type	Inner Pack	Master Pack
11514	Black	1	52106001	Porelon	6	24



Panasonic KX-P1080/1090 (with re-inker roll): Size: 5/16" ▼

Item #	Color	Qty Per Pack	Replaces Manufacture Part #'s	Packaging Type	Inner Pack	Master Pack
11515	Black	1	KX-P110i, KX-P120	Porelon	6	144

*Non TAA Compliant



Panasonic KX-P1123/ 1124 (with re-inker roll): Size: 5/16" ▼

Item #	Color	Qty Per Pack	Replaces Manufacture Part #'s	Packaging	Inner Pack	Master Pack
11516	Black	1	KX-P145	Porelon	6	144
11916	Black	1	KX-P145	Porelon Fr/Eng	6	36
11600	Black	1	KX-P145	Porelon*	6	24

*Non TAA Compliant

Printer



Panasonic KX-P2123/2124: Size: 5/16" ▼

Item #	Color	Qty Per Pack	Replaces Manufacture Part #'s	Packaging Type	Inner Pack	Master Pack
11517	Black	1	KX-P150	Porelon	4	72

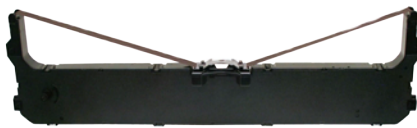
*Non TAA Compliant



Panasonic KX-P2130/2135: Size: 5/16" ▼

Item #	Color	Qty Per Pack	Replaces Manufacture Part #'s	Packaging	Inner Pack	Master Pack
11518	Black	1	KX-P160	Porelon	4	72

*Non TAA Compliant



Panasonic KX-P3196: Size: 1/2" ▼

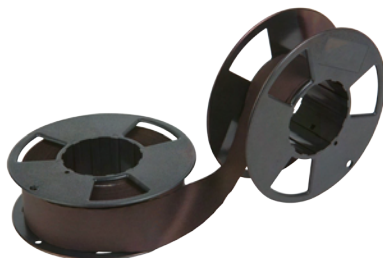
Item #	Color	Qty Per Pack	Replaces Manufacture Part #'s	Packaging	Master Pack
11985	Black	1	KX-P190, KX-P191	Generic Fr/Eng	6



Panasonic KX-P3626/3696: Size: 1/2" ▼

Item #	Color	Qty Per Pack	Replaces Manufacture Part #'s	Packaging	Master Pack
11560	Black	1	KX-P170	Generic	18
11660	Black	1	KX-P170	Generic*	38

*Non TAA Compliant

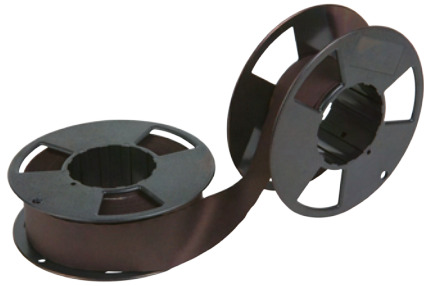


Printronix P300/600: Size: 1" ▼

Item #	Color	Qty Per Pack	Replaces Manufacture Part #'s	Packaging	Inner Pack	Master Pack
11561	Black	1	102247-001	Generic	-	48
11661	Black	1	102247-001	Generic*	-	65

*Non TAA Compliant

Printer



Printronix P300/600 OCR: Size: 1" ▼

Item #	Color	Qty Per Pack	Replaces Manufacture Part #'s	Packaging Type	Inner Pack	Master Pack
11662	Black	1	102796-001, 108506-001	Generic*	-	65

*Non TAA Compliant



Texas Instrument 8920/8930: Size: 7/8" ▼

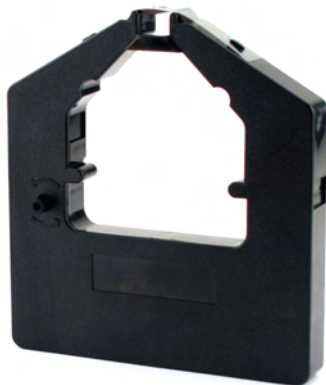
Item #	Color	Qty Per Pack	Replaces Manufacture Part #'s	Packaging	Master Pack
11565	Black	1	2551152-0011	Generic	18



Toshiba P351C: Size: 1/2" ▼

Item #	Color	Qty Per Pack	Replaces Manufacture Part #'s	Packaging	Master Pack
11566	Black	1	E2035ICBLKS, RC11	Generic	72
11966	Black	1	E2035ICBLKS, RC11	Generic	72
11666	Black	1	E2035ICBLKS, RC11	Generic*	110

*Non TAA Compliant



Tritel / Data Royal 5000: Size: 1/2" ▼

Item #	Color	Qty Per Pack	Replaces Manufacture Part #'s	Packaging	Master Pack
11567	Black	1	535300	Generic	72
11667	Black	1	535300	Generic*	100

*Non TAA Compliant

Typewriter



Adler / Royal Alpha 600: Size: 5/16" ▼

Item #	Color	Qty Per Pack	Replaces Manufacture Part #'s	Packaging	Inner Pack	Master Pack
11423	Black	2	XC001, 013045, 250, 901250, 911250, HYC01	Porelon	4	72
11823	Black	1	XC001, 013045, 250, 901250, 911250, HYC01	Porelon Fr/Eng	4	72
11473	Black	2	XC001, 013045, 250, 901250, 911250, HYC01	Porelon*	4	72

*Non TAA Compliant



Adler Royal Sat II: Size: 5/16" ▼

Item #	Color	Qty Per Pack	Replaces Manufacture Part #'s	Packaging	Inner Pack	Master Pack
11414	Black	2	232, 901232, 911232, EC001I	Porelon	4	72
11814	Black	1	232, 901232, 911232, EC001I	Porelon Fr/Eng	4	72

*Non TAA Compliant



IBM Actionwriter I / Adler Sat III: Size: 5/16" ▼

Item #	Color	Qty Per Pack	Replaces Manufacture Part #'s	Packaging	Master Pack
11424	Black	1	901246, 1361190, 911246, 013038	Generic	72
11474	Black	1	901246, 1361190, 911246, 013038	Porelon*	24

*Non TAA Compliant



Brother AX10: Size: 5/16" ▼

Item #	Color	Qty Per Pack	Replaces Manufacture Part #'s	Packaging	Inner Pack	Master Pack
11438	Black	1	1030, 1230, 1430	Generic	-	72
11402	Black	2	1030, 1230, 1430	Porelon	4	72
11403	Black	2	1030, 1230, 1430	Porelon	4	72
11488	Black	1	1030, 1230, 1430	Generic*	4	72
11452	Black	2	1030, 1230, 1430	Porelon*	4	72

*Non TAA Compliant

Typewriter



Brother EM 100/200: Size: 5/16" ▼

Item #	Color	Qty Per Pack	Replaces Manufacture Part #'s	Packaging	Inner Pack	Master Pack
11425	Black	1	7020, 7220, 7420	Generic	-	48
11475	Black	1	7020, 7220, 7420	Generic*	-	100

*Non TAA Compliant



Carbon Paper: Size: 8-1/2" x 11" ▼

Item #	Color	Qty Per Pack	Packaging	Inner Pack	Master Pack
11407	Black	25	Porelon	12	48
11465	Black	100	Generic	12	100



IBM Selectric II: Size: 2/3" ▼

Item #	Color	Qty Per Pack	Replaces Manufacture Part #'s	Packaging	Inner Pack	Master Pack
11411	Black	1	1136310, 1299095	Porelon	4	72
11811	Black	1	1136310, 1299095	Porelon Fr/Eng	4	72
11444	High Density Black	1	1136310, 1299095	Generic	4	72
11461	Black	1	1136310, 1299095	Porelon*	4	72

*Non TAA Compliant

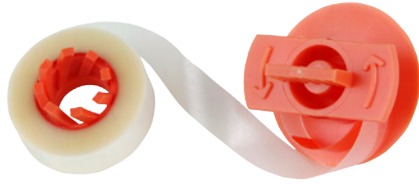


IBM Selectric II Dry Lift Off Tape: Size: 1/4" ▼

Item #	Qty Per Pack	Replaces Manufacture Part #'s	Packaging	Inner Pack	Master Pack
11808	6	1136434, 1136435, 1361195	Porelon Fr/Eng	4	72
11408	6	1136434, 1136435, 1361195	Porelon	4	72
11409	2	1136434, 1136435, 1361195	Porelon	6	144
11489	6	1136434, 1136435, 1361195	Generic*	-	36
11458	6	1136434, 1136435, 1361195	Porelon*	4	72
11459	2	1136434, 1136435, 1361195	Porelon*	6	144

*Non TAA Compliant

Typewriter



IBM Selectric II Tacky Lift Off Tape: Size: 1/4" ▼

Item #	Qty Per Pack	Replaces Manufacture Part #'s	Packaging	Inner Pack	Master Pack
11410	2	1136433	Porelon*	6	144

*Non TAA Compliant



IBM Wheelwriter 3, 5 & 6: Size: 5/16" ▼

Item #	Color	Qty Per Pack	Replaces Manufacture Part #'s	Packaging	Inner Pack	Master Pack
11413	Black	1	1337761, 1380999	Porelon	4	72
11813	Black	1	1337761, 1380999	Porelon Fr/Eng	4	72
11463	Black	1	1337761, 1380999	Porelon*	4	72

*Non TAA Compliant



IBM Wheelwriter 3, 5 & 6 Lift Off Cassette: Size: 5/16" ▼

Item #	Qty Per Pack	Replaces Manufacture Part #'s	Packaging	Inner Pack	Master Pack
11412	1	1337765	Porelon	4	72
11812	1	1337765	Porelon Fr/Eng	4	72
11462	1	1337765	Porelon*	4	72

*Non TAA Compliant



Olivetti ET201/221 Lift Off Tape: Size: 1/4" ▼

Item #	Qty Per Pack	Replaces Manufacture Part #'s	Packaging	Master Pack
11431	6	7289816, 7289916, 80505A	Generic	72



Olivetti ET201/221 Etcart: Size: 5/16" ▼

Item #	Color	Qty Per Pack	Replaces Manufacture Part #'s	Packaging	Master Pack
11430	Black	1	7842224, 80840F	Generic	60
11480	Black	1	7842224, 80840F	Generic*	60

*Non TAA Compliant

Typewriter



Smith Corona H Series: Size: 5/16" ▼

Item #	Color	Qty Per Pack	Replaces Manufacture Part #'s	Packaging	Inner Pack	Master Pack
11417	Black	2	21000, 21010, 21500, 59436, 67108	Porelon	4	72
11817	Black	1	21000, 21010, 21500, 59436, 67108	Porelon Fr/Eng	4	72
11467	Black	2	21000, 21010, 21500, 59436, 67108	Porelon*	4	24

*Non TAA Compliant



Smith Corona H Series Lift Off Cassette: Size: 5/16" ▼

Item #	Qty Per Pack	Replaces Manufacture Part #'s	Packaging	Inner Pack	Master Pack
11820	1	21060, 21065, 21560, 21565, 63412, 63420, 67116	Porelon Fr/Eng	4	72
11470	1	21060, 21065, 21560, 21565, 63412, 63420, 67116	Porelon*	4	24

*Non TAA Compliant



Smith Corona H Series Lift Off Tape: Size: 1/4" ▼

Item #	Qty Per Pack	Replaces Manufacture Part #'s	Packaging	Inner Pack	Master Pack
11469	2	21050, 21055, 21555, 54048, 59055, 59402	Porelon*	6	144

*Non TAA Compliant



Twin Spool Typewriter: Size: 1/2" ▼

Item #	Color	Qty Per Pack	Replaces Manufacture Part #'s	Packaging	Inner Pack	Master Pack
11822	Black	1	Adler, Brother, Olivetti, Olympia, Royal, Sears, Silver Reed, Smith Corona, and Swintec	Porelon Fr/Eng	6	144
11472	Black	1	Adler, Brother, Olivetti, Olympia, Royal, Sears, Silver Reed, Smith Corona, and Swintec	Eng	6	144
11476	Black/White	1	Adler, Brother, Olivetti, Olympia, Royal, Sears, Silver Reed, Smith Corona, and Swintec	Porelon*	6	24

*Non TAA Compliant



Identity Group | Business Product Solutions
1480 Gould Drive | Cookeville TN 38506

Customer Service
Hours: Monday - Friday, 7:00am - 5:00pm CST
Phone: 1-800-451-8075