



**Filed as *Tetramolopium lepidotum* subsp.
lepidotum [family ASTERACEAE]**

<http://plants.jstor.org/specimen/bish1022542>

<http://plants.jstor.org/>

Your use of the JSTOR archive indicates your acceptance of JSTOR's Terms and Conditions of Use, available at <http://www.jstor.org/page/info/about/policies/terms.jsp>. JSTOR's Terms and Conditions of Use provides, in part, that unless you have obtained prior permission, you may not download an entire issue of a journal or multiple copies of articles, and you may use content in the JSTOR archive only for your personal, non-commercial use.

Please contact the contributing partner regarding any further use of this work. Partner contact information may be obtained at <http://plants.jstor.org/action/community?page=partners>.

Each copy of any part of a JSTOR transmission must contain the same copyright notice that appears on the screen or printed page of such transmission.

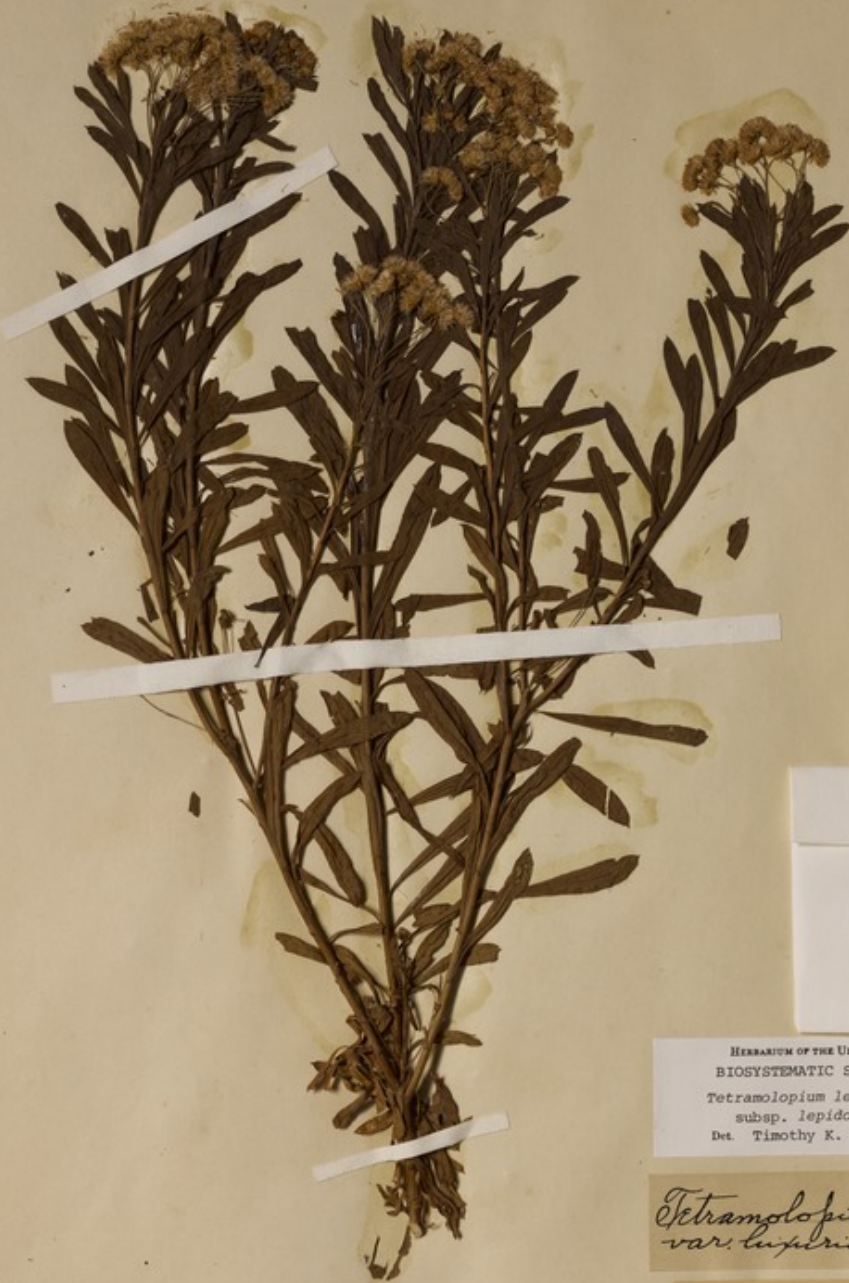
JSTOR is a not-for-profit service that helps scholars, researchers, and students discover, use, and build upon a wide range of content in a trusted digital archive. We use information technology and tools to increase productivity and facilitate new forms of scholarship. For more information about JSTOR, please contact plants@jstor.org.

Filed as *Tetramolopium lepidotum* subsp. *lepidotum* [family ASTERACEAE]

Herbarium

Collection	Herbarium Specimens
Resource Type	Specimens
Collector	Munro, G.C., #364
Collection date	1913/11/14 - 1913/11/14
Locality	Pacific Ocean, Northern Polynesia, USA, Main Hawaiian Islands, Lanai, Hawaii, Miki
Country	United States (United States)
Identifications	<i>Tetramolopium lepidotum</i> subsp. <i>lepidotum</i> [family ASTERACEAE] (stored under name); Verified by Herbst, D.R.; S.H.Sohmer; W.L.Wagner, 1989/1/1 - 1989/12/31
Pages	1
Data last modified	2013-08-05

<http://plants.jstor.org/specimen/bish1022542>



HERBARIUM OF THE UNIVERSITY OF CALIFORNIA, BERKELEY
 BIOSYSTEMATIC STUDIES OF TETRAMOLOPIUM
Tetramolopium lepidotum (Lessing) Sherff
 subsp. *lepidotum*
 Det. Timothy K. Lowrey Date 1981

Tetramolopium lepidotum
 var. *luxurians* (Hb.) Sherff
 DETERMINED BY EARL E. SHERFF

Flora Hawaiiensis.
 Collected by G. C. Moore on Lanai.
Tetramolopium Chamissonis
 var. *luxurians*
 Miki 11/14/13
 NO 364. S.H.H.

Manual of the Flowering Plants of Hawai'i
 Herbarium of Bernice P. Bishop Museum
***Tetramolopium lepidotum* (Less.) Sherff**
 subsp. *lepidotum*
 DET. W.L. Wagner, D. Herbst & S. Sohmer DATE 1989

