



**Isotype of *Tisserantiodoxa oubanguiensis*
Aubrév.&Pellegr. [family SAPOTACEAE]**

<http://plants.jstor.org/specimen/bm000925416>

<http://www.jstor.org>

Your use of the JSTOR archive indicates your acceptance of JSTOR's Terms and Conditions of Use, available at <http://www.jstor.org/page/info/about/policies/terms.jsp>. JSTOR's Terms and Conditions of Use provides, in part, that unless you have obtained prior permission, you may not download an entire issue of a journal or multiple copies of articles, and you may use content in the JSTOR archive only for your personal, non-commercial use.

Please contact the contributing partner regarding any further use of this work. Partner contact information may be obtained at <http://plants.jstor.org/page/about/plants/PlantsProject.jsp>.

Each copy of any part of a JSTOR transmission must contain the same copyright notice that appears on the screen or printed page of such transmission.

JSTOR is a not-for-profit service that helps scholars, researchers, and students discover, use, and build upon a wide range of content in a trusted digital archive. We use information technology and tools to increase productivity and facilitate new forms of scholarship. For more information about JSTOR, please contact plants@jstor.org.

Isotype of *Tisserantiodoxa oubanguiensis* Aubrév.&Pellegr. [family SAPOTACEAE]

Herbarium

Collection	Type Specimens
Resource Type	Specimens
Collector	LeTestu,G., #1866
Collection date	11.06.1925
Locality	Waka
Country	Central African Republic (Central African Republic)
Identifications	Isotype of <i>Tisserantiodoxa oubanguiensis</i> Aubrév.&Pellegr. [family SAPOTACEAE]; <i>Englerophytum oubanguiense</i> (Aubrév.&Pellegr.) Aubrév.&Pellegr. [family SAPOTACEAE] (stored under name);
Pages	1
Data last modified	2007-04-10

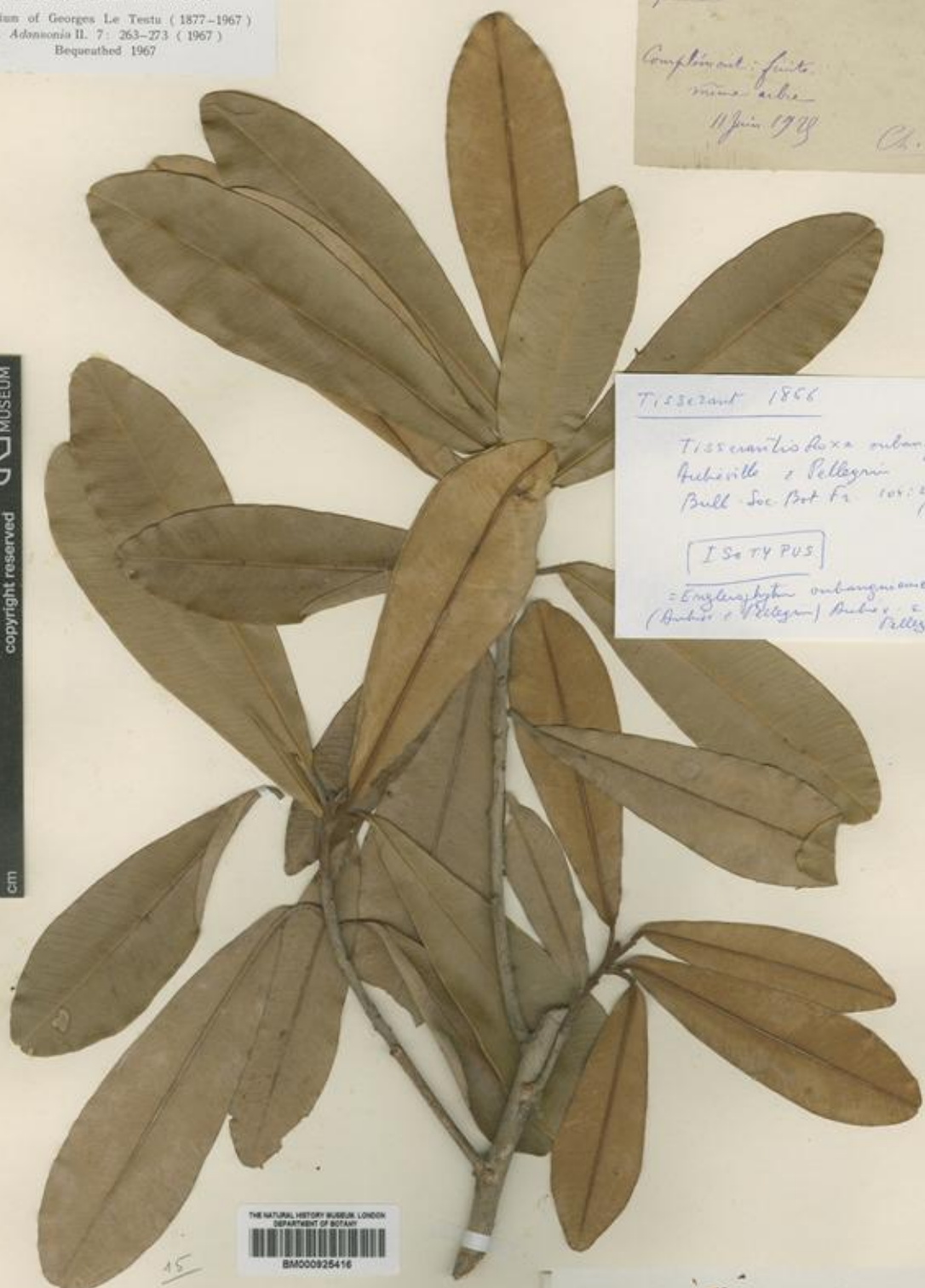
<http://plants.jstor.org/specimen/bm000925416>

HERBARIUM MUSEI BRITANNICI
Herbarium of Georges Le Testu (1877-1967)
cf. *Adansonia* II. 7: 263-273 (1967)
Bequeathed 1967

Sapotaria 4 1866
Complément: fruits
même arbre
11 juin 1908 Ch. F.



Tisserant 1866
Tisserantia flexa oubanguiensis
Aubreville & Pellegrin
Bull. Soc. Bot. Fr. 105: 227 (1928)
ISOTYPUS
= *Engleraphya oubanguiensis*
(Aubreville & Pellegrin) Aubreville & Pellegrin



HERB. G. LE TESTU
Plantes recueillies par le Révérend Père C. Tisserant,
dans la circonscription de la Waka
(Oubangui-Chari) A. E. F.
n° 1.865.
Tisserantiodora
oubanguiensis
Aubreville & Pellegrin
Det. System. XVI 2.55. 1960
Engleraphya oubanguiensis Aubreville & Pellegrin

