



**Isotype of *Acacia prasinata* Hude [family
FABACEAE]**

<http://www.aluka.org/action/showMetadata?doi=10.5555/AL.AP.SPECIMEN.C10000694>

Use of the Aluka digital library is subject to Aluka's Terms and Conditions, available at <http://www.aluka.org/page/about/termsConditions.jsp>. By using Aluka, you agree that you have read and will abide by the Terms and Conditions. Among other things, the Terms and Conditions provide that the content in the Aluka digital library is only for personal, non-commercial use by authorized users of Aluka in connection with research, scholarship, and education.

The content in the Aluka digital library is subject to copyright, with the exception of certain governmental works and very old materials that may be in the public domain under applicable law. Permission must be sought from Aluka and/or the applicable copyright holder in connection with any duplication or distribution of these materials where required by applicable law.

Aluka is a not-for-profit initiative dedicated to creating and preserving a digital archive of materials about and from the developing world. For more information about Aluka, please see <http://www.aluka.org>

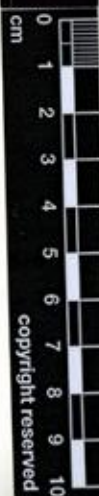
Isotype of *Acacia prasinata* Hunde [family FABACEAE]

Collector	Thulin, M.; Hunde, A.; Tadesse, M., No# 3865
Collection date	1980/5/21
Locality	SHOA REGION: Awash National Park, 8 km on the track towards Fantale starting opposite to the main entrance of the park
Country	Ethiopia (ETHIOPIA)
Collection altitude	1100
Identifications	Isotype of <i>Acacia prasinata</i> Hunde [family FABACEAE] (stored under name); Verified by A. Hunde, Not on Sheet
Notes	<p>On sheet: Fab.Label1: FLORA OF ETHIOPIA Isotype <i>Acaciaprasinata</i> Hunde Tree to c. 4.5 m high withspreading branches and rounded crown. Barkblackish grey, deeply fissured, yellowish togreenish on branchlets. Flowers pale-yellow towhitish. Pods dehiscent. Coll. M. Thulin, A.Hunde & M. Tadesse 3865 Det.: A. HundeLabel2: ETHIOPIA. SHOA REGION: Awash National Park,8 km on the track towards Fantale startingopposite to the main entrance of the park, c.859'N, 3958'E. Undulating hilly country withscattered <i>Acacia senegal</i>, <i>Acacia</i> sp., <i>Balanites</i>, <i>Dobera</i> etc., on thin greyish brown stony andgravelly soil. Very sparse ground-cover. Alt.c. 1100 m. 21.5.1980</p>
Repository	, C10000694
Data last modified	2009-09-29

<http://www.aluka.org/action/showMetadata?doi=10.5555/AL.AP.SPECIMEN.C10000694>



NATURAL HISTORY MUSEUM OF DENMARK
BOTANICAL GARDEN & MUSEUM
UNIVERSITY OF COPENHAGEN



copyright reserved

MUSEUM BOTANICUM
HAUNIENSE

C

ETHIOPIA, SHOA REGION: Awash National Park,
8 km on the track towards Fantale starting
opposite to the main entrance of the park, c.
8°59'N, 39°58'E. Undulating hilly country with
scattered *Acacia senegal*, *Acacia* sp., *Balanites*,
Dobera etc., on thin greyish brown stony
and gravelly soil. Very sparse ground-cover.
Alt. c. 1100 m.
21.5.1980

FLORA OF ETHIOPIA Isotype

Acacia prasinata Hildeb.

Tree to c. 4.5 m high with spreading
branches and rounded crown. Bark
blackish grey, deeply fissured, yellowish
to greenish on branchlets. Flowers pale-
yellow to whitish. Pods dehiscent.

Coll. M. Thulin, A. Hildeb. & M. Tadesse 3865
Det.: A. Hildeb.

Feb.