



BRICKFORM



Information on

Nearest Distributor

1-800-483-9628

8:00 AM to 5:00 PM

Monday-Friday

Technical Service

1-800-483-9628

More Info Online At

www.brickform.com

www.solomoncolors.com



Table of Contents

| | | | |
|---------------------------------|--------------|-----------------------------------|--------------|
| Why Buy Brickform?..... | 4 | Resurfacing Products | 41-43 |
| Texturing Products | 5-26 | Triple Seven Bond Coat | 41 |
| Seamless Texture Skins | 5-7 | Stampable Overlay | 41 |
| Paladiano Texture Mats | 8-11 | Micro-Topping | 42 |
| Contractors Choice Texture Mats | 12 | SM Professional Grade | 42 |
| Stone Texture Mats | 13-15 | Overlay Liquid Colorant..... | 42 |
| Slate Texture Mats..... | 16-17 | Turtle Set | 42 |
| Brick Texture Mats | 18 | Vertical Mix | 43 |
| Tile Texture Mats | 19 | Stencils | 44 |
| Wood Texture Mats | 19 | Sealers..... | 45-47 |
| Creative Images Texture Mats | 20-22 | UreMax WB | 45 |
| Ultra-Liners..... | 23 | Poly-Astic | 45 |
| Step-Liners..... | 24-25 | DecoPoxy | 45 |
| Quick-Strip Joint Tool..... | 25 | Stealth-Seal | 45 |
| Texturing Accessories | 26 | Stealth-Seal Premium | 45 |
| Coloring Products | 27-37 | Gem Cure and Seal | 45 |
| Color Hardener | 28 | Satin Cure and Seal | 45 |
| COLORSPEADER™ | 28 | Gem-Seal | 45 |
| Antique Release | 28 | Poly-Seal | 45 |
| Antique-It..... | 29 | Safety-Seal | 46 |
| Cem-Coat..... | 29 | Satin-Seal | 46 |
| Standard Color Guide | 30-31 | Tinta' Seal | 46 |
| Sample Color Options | | Traction Grip..... | 46 |
| Center Fold-Out | | Matte-Magic..... | 46 |
| FreestylePRO | 32 | Strip-It | 46 |
| Blush-Tone Acid Stain | 33 | Sealer Properties Checklist | 47 |
| E-Stain..... | 34 | Finishing Aids..... | 48 |
| ARTesian Stain | 35 | Neutra Clean | 48 |
| Liquid Color..... | 36 | Liquid Release..... | 48 |
| Color Wax..... | 36 | Day1 | 48 |
| Powdered Color | 37 | Surface Deactivator..... | 48 |
| Polishing Products | 38-40 | Maintenance Products..... | 49 |
| Pro-Dye | 38 | Dura-Wax | 49 |
| Lythic Densifier | 39 | E-Etch..... | 49 |
| Lythic XL Densifier..... | 39 | Systems Approach to | |
| Lythic Protector | 40 | Decorative Concrete | 50-55 |
| Lythic SPD Protector..... | 40 | Stamped Concrete | 50 |
| Lythic Cleaner | 40 | Integral Color..... | 51 |
| | | Restoration | 52 |
| | | Resurfacing | 53 |
| | | Staining | 54 |
| | | Polishing..... | 55 |
| | | Made-to-Order Tools..... | 56-58 |
| | | Seamless Texture Skin | |
| | | Order Form | 59 |

The Complete BRICKFORM System

Architectural concrete has become one of the most popular ways to color and texture concrete, especially since it costs approximately a third less than many natural materials. BRICKFORM offers a complete range of systems to choose from. Systems that work seamlessly together to resurface and restore aging concrete or to create new colored and textured hardscapes. Systems that include stencils, cementitious coatings, a wide variety of coloring products, imprinting tools, companion accessories, and an extensive line of sealing and maintenance products.

Great products, however, are only part of a successful project. Knowledgeable specifiers and skilled installers are key ingredients. That is why BRICKFORM is affiliated with AIA and ASLA. We have developed accredited presentations so that architects will have a better knowledge of what decorative concrete is all about. BRICKFORM supports hands-on training and demonstrations across the nation, where installers are presented with the latest in product knowledge and techniques. Professional Area Managers participate in product knowledge meetings so that distribution has a thorough understanding of how our products work as a system.

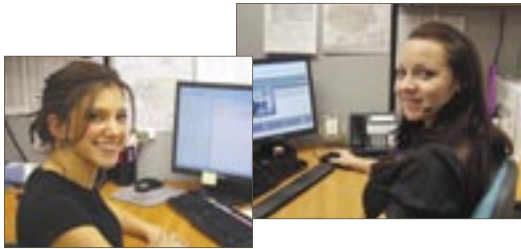
Contact your local representative or our friendly and knowledgeable Customer Service Department to find out how BRICKFORM's products give you the concrete advantage.

Why Buy BRICKFORM? Fast, Friendly, Expert Service

Professional people are available to answer questions about our products and how they work as a system. Our Customer Service Department can help you to find a distributor in your area. Our Technical Support Team can help answer questions on application and installation techniques. Call today for more information.

Account Managers

Exceptional customer service is our goal. BRICKFORM strives to exceed expectations by resolving issues on the first call. We have dedicated, professional account managers to help make your project a success from start to finish.



Technical Support

Have a technical or jobsite question? Contact a BRICKFORM Technical Support Representative or Account Manager for more information at 1-800-483-9628.

At BRICKFORM, we want to make sure you have the support you need. We are devoted to providing the most comprehensive information and education to architects, distributors, contractors, and installers. BRICKFORM works with dealers nationwide to sponsor hands-on demonstrations. Here installers are presented with the latest in product knowledge and techniques.

Information on everything, from tips to testimonials and technical information is available on our website. Up-to-the-minute schedules of our latest product demos are posted. We participate in many local and international trade shows where we showcase new products, instructional videos and demonstrations for attendees.

Our technical specialists are only a phone call away and are trained to answer your questions on your particular installation or project. Area Managers are also available for jobsite consultations.

Shipping & Traffic

Once you have placed your order, the BRICKFORM team of transportation specialists take over to ensure that your order is packaged and shipped. These experienced professionals ship your order in the fastest, most economical way possible. You may also choose your own trucking company or company truck for your shipment.

Product Knowledge

BRICKFORM understands your desire to know how our systems work. Our managers can arrange accredited architectural presentations or product knowledge meetings.

Nationwide Sales Support

The BRICKFORM Area Manager is there to provide ongoing superior service. BRICKFORM understands the meaning of quality support, so we have chosen Area Managers with the background, knowledge and expertise to answer your questions quickly and correctly. Contact Customer Service at 1-800-483-9628 for the name and contact information of your local Area Manager.

Find a Contractor/Installer

Need help getting started on you dream project? Call 1-800-483-9628 to be referred to a BRICKFORM distributor near you. Ask your local distributor to recommend a contractor who specializes in using BRICKFORM decorative concrete products.

Training

BRICKFORM supports hands-on training and demonstrations across the nation, where installers are presented with the latest in product knowledge and techniques. Professional area managers participate in product knowledge meetings so that distribution has a thorough understanding of how your products work as a system.



Engineered Texturing Systems

The BRICKFORM system of Texture Mats has introduced a whole new level of creative expression to decorative concrete work. Precision engineered tools make possible a high degree of controlled creativity. It is now possible to mimic and even enhance the look and feel of natural stone and many other surfaces. Anything from finely tooled slate to perfectly set cobbles, BRICKFORM has the tools to make it happen, with absolute control.

Largest Selection and Best Value

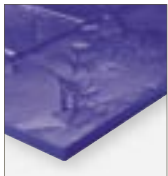
Pattern

BRICKFORM manufactures the largest selection of texturing tools worldwide. Over 175-patterns, from Rough Cut Ashlar to Random Stone, and used brick textures to wood plank, are available in various sizes, joints, grout lines, and configurations.

Texture

Over 30-textures have been designed to recreate the look and feel of natural materials. All tools, from random fieldstone to coarse wire-cut brick, heavily textured stone to the smooth look of Mexican tile are created with strict attention to detail.

Precision and Durability



The resilient material used to create each texture is designed to retain pattern "memory." Consistent, well-defined, uniform texture is transferred, in every detail, onto the concrete surface imprint after imprint.



Our company is dedicated to the precise and unsurpassed consistency of each and every texturing tool. Strict standards are exercised so that every tool is tight-fitting; reducing pattern lines and unsightly ridges.



Each tool is crafted from a high-quality polyurethane material that is flexible, yet retains high-tear strength. Sturdy handles are methodically placed according to tool- weight distribution, increasing balance and maneuverability.

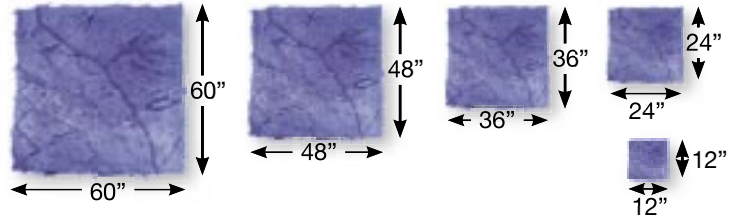
Disclaimer - All measurements are nominal. Skin and texture mat measurements are based on the Brickform mold size. Urethane has a natural tendency to shrink or expand, depending on environmental factors. This does not affect how the mats fit together.

Seamless Texture Skins

Standard-Flexible

BRICKFORM Standard-Flexible Texture Skins are made from a high-quality polyurethane that is lightweight and flexible with exceptional detail. Designed to complement the BRICKFORM line of texture mats and accessories, these skins are flexible enough to texture 45° angles next to buildings and retaining walls.

Available in all 21 Textures and 5 sizes.



*60"x60" available in Limestone, Rough Stone, Heavy Stone, Sierra Seamless, and Desert Slate only

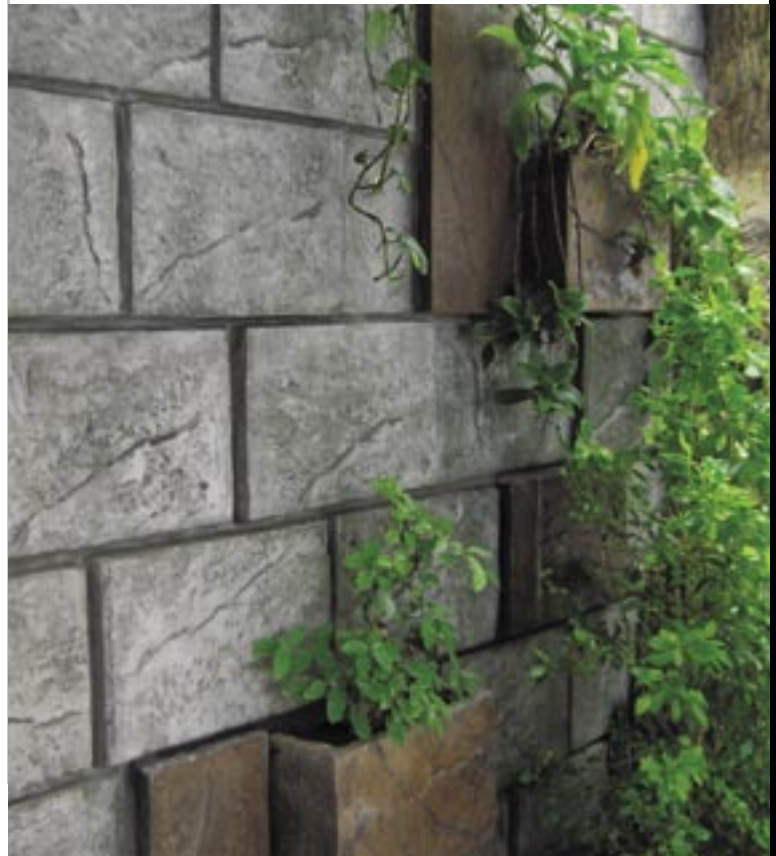
Ultra-Flexible

BRICKFORM Ultra-Flexible Detail Skins are designed for tight corners or vertical facings. They are perfect for bull nose steps, pool coping or cantilevering and faux rock projects. Ultra-Flexible Skins are available in a variety of textures and sizes.

Available in all 21 Textures.



See page 43 for Vertical Mix skins and tools.



Seamless Skins

BRICKFORM Seamless Skins™ are feathered-edged skins that produce continuous texture with no grout or joint lines. BRICKFORM texture skins are available in standard-grade and ultra-flexible materials, all designed with unsurpassed quality. Seamless skins are compatible with BRICKFORM Stampable Overlay.



Blue Stone Texture (A)

A natural stone surface with a sandy texture that includes clefts which leave a layered appearance.



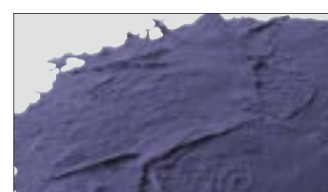
Limestone Texture (B)

A natural stone surface, similar to Veronica Stone but with a finer texture.



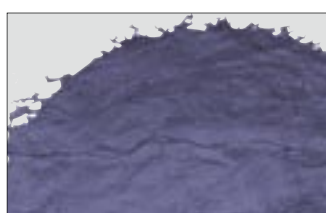
Rough Stone Texture (C)

A natural stone texture characterized by a continuous coarse surface with several distinguishing veins.



Heavy Stone Texture (D)

A rough, natural stone surface containing chips, fractures, pockmarks and veins.



Sanded Slate Texture (E)

Similar to our slate texture with the addition of a lightly sanded appearance across the entire texture field.



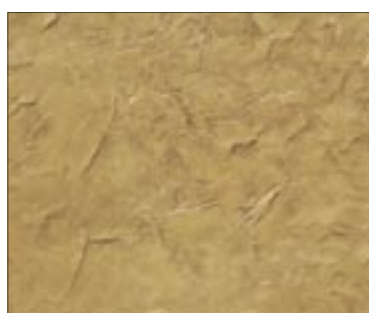
Renaissance Slate Texture (F)

A natural, stone surface with a slight sandstone texture that includes various veins, typically running in a similar direction.



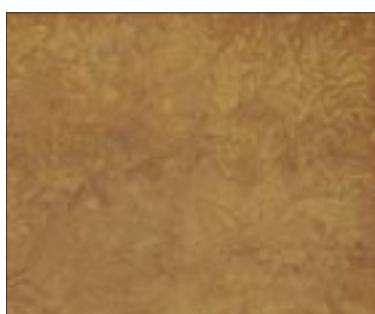
Chiseled Slate Texture (G)

A naturally laminated stone texture, split along parallel planes, hand-tooled to create a chipped, fragmented look.



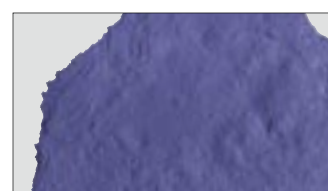
Roman Slate Texture (H)

A slate stone surface that utilizes dips, ridges and veins to create a continuously changing texture across the entire surface.



Yucatan Texture (J)

A stone surface consisting of deep chips, pits and fractures creating a continuously undulating texture.

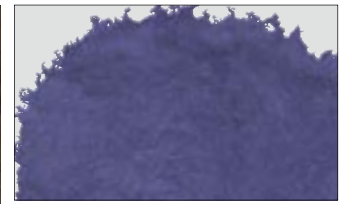


Sierra Seamless Texture (K)

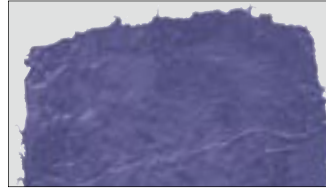
A natural stone texture with an ocean-worn surface that combines rough, heavy, stone appearance with water-washed ridges, veins and clefts.

Texture skins are shown as color photographs to suggest the wide variety of finishes possible.

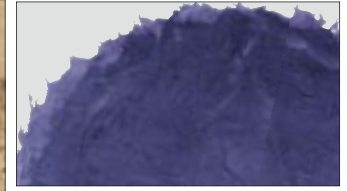
See page 59 for ordering information.



Rocky Mountain Stone Texture (L)
A natural stone surface that incorporates a rough, uneven texture with naturally etched veins and ridges.



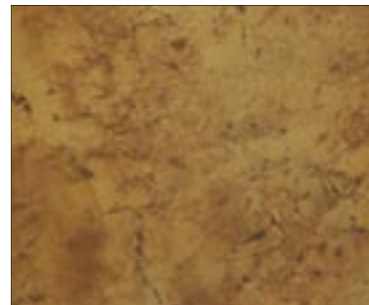
Smooth Slate Texture (O)
A naturally laminated stone texture, split along parallel planes, creating an uneven surface that incorporates various veins and ridges.



Desert Slate Texture (P)
A simulated slate texture that combines numerous clefts and irregular surfaces to create the ideal concrete impressions.



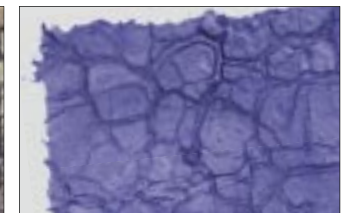
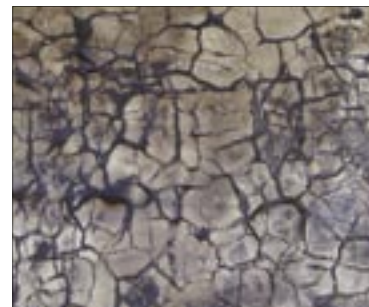
Elk Mountain Texture (Q)
A consistent light stone texture, making it appealing for indoor and outdoor applications.



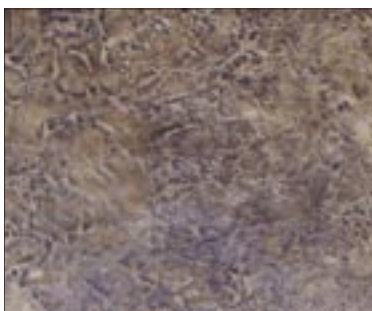
Elk Mountain Texture (veined) (R)
A light stone texture with well placed fractures, making it appealing for indoor and outdoor applications.



Regal Ashlar Slate (S)
A robust texture, with constantly changing ridges, brings a majestic and noble look to any surface.



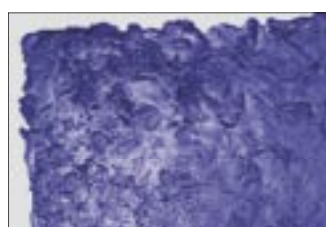
Cracked Mud (T)
A bold and daring, natural earth texture with a surface that looks and feels real.



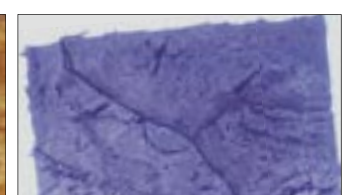
Lunar Rock (U)
An out of this world look that will transform any hardscape. The surface boasts a meteor shower of texture with a variety of impacted stones.



Super Slate (V)
A blended slate pattern with enhanced highlights.



Sidewalk Stone (W)
A rustic blend of soft and strong textures, giving a traditional feel to any surface.



Riviera Texture (X)
A naturally laminated stone texture, split along parallel planes, creating an uneven surface that incorporates various veins and ridges.

Paladiano Texture Mats by Bob Harris

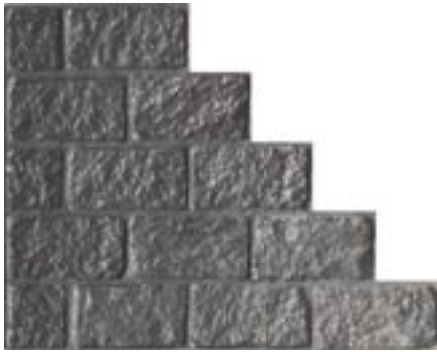
These speciality tools are cast from natural stones in historical regions with authentic textures and shapes that are pleasing to the eye from all angles. England, Italy, Bulgaria, Greece, Cyprus and France are the locations which inspired the “Wonders of the World” stamping tool line.



YORKSHIRE COBBLE



York was for many years the heart of England. When troubled times fell upon London Kings and Queens would retreat back to York, safe behind fortified walls. York cathedral stands in the centre of the cobbled streets that inspired Paladiano to recreate these 13th century cobble stones.



PD-105



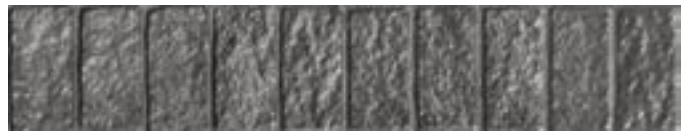
PD-100



PD-125



PD-115



PD-120

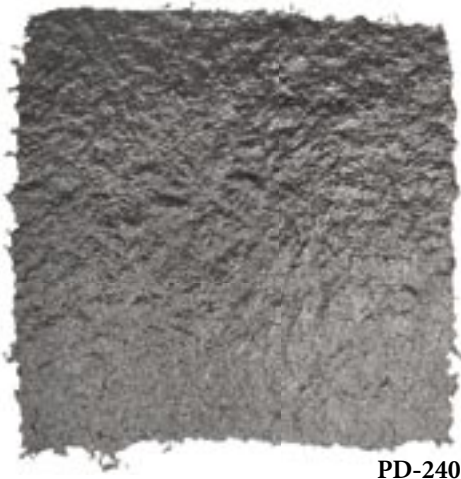
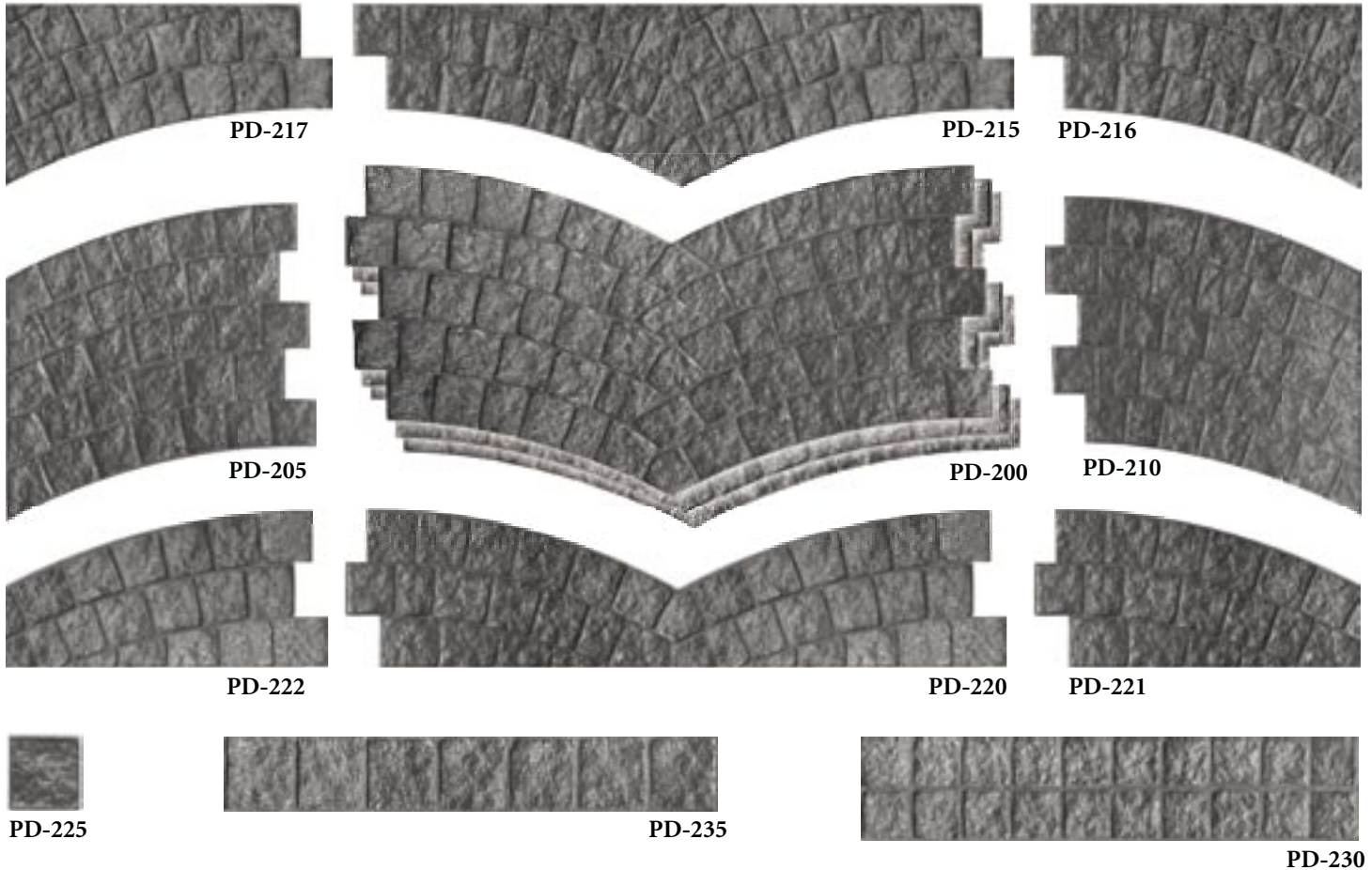
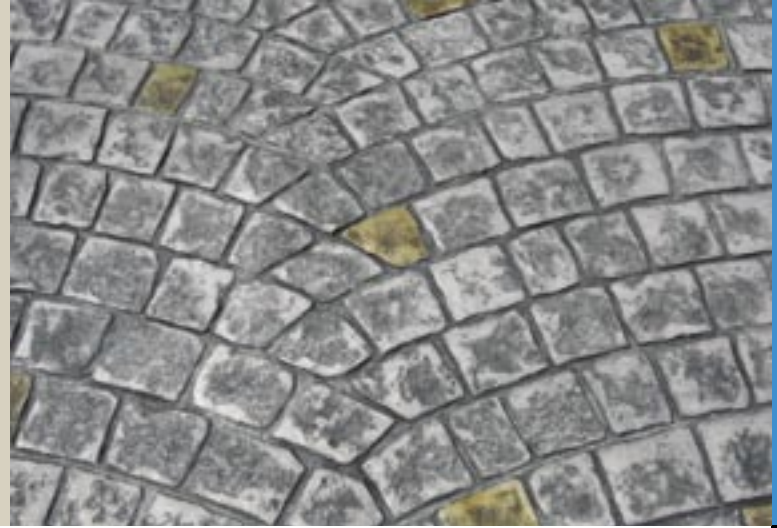


PD-110

| Part # | YORKSHIRE COBBLE | Size | Weight | # per set |
|---------|--|----------------|--------|-----------|
| PD-100 | Full tools | 59" x 23.5" | 22 lbs | 6 |
| PD-105 | Left | 29.5" x 23.75" | 11 lbs | 2 |
| PD-110 | Single Stone | 8.5" x 4.75" | 1 lb | 3 |
| PD-115 | Double Row Border | 43.5" x 9.5" | 9 lbs | 1 |
| PD-120 | Soldier Course Border | 41.5" x 8" | 7 lbs | 1 |
| PD-125 | 2x2 skin | 24" x 24" | 4 lbs | 1 |
| PD-130 | 1x1 skin | 12" x 12" | 1 lb | 1 |
| PD-100F | Full Floppy | 59" x 23.5" | 16 lbs | 1 |
| FM-6570 | Touch-up wheel | | | 1 |
| PD-100S | Full set YORKSHIRE COBBLE with Instructional DVD | | | 17 |

Pavimento of Paris

Paris, France is one of the most inspirational places for architecture. The Paladiano team recognized the abundance of granite sets positioned in a repetitive fish scale design. These quarried granite sets had been dressed and hand placed by what can only be described as paving artisans. To reproduce the streetscapes of Paris was an engineering challenge.



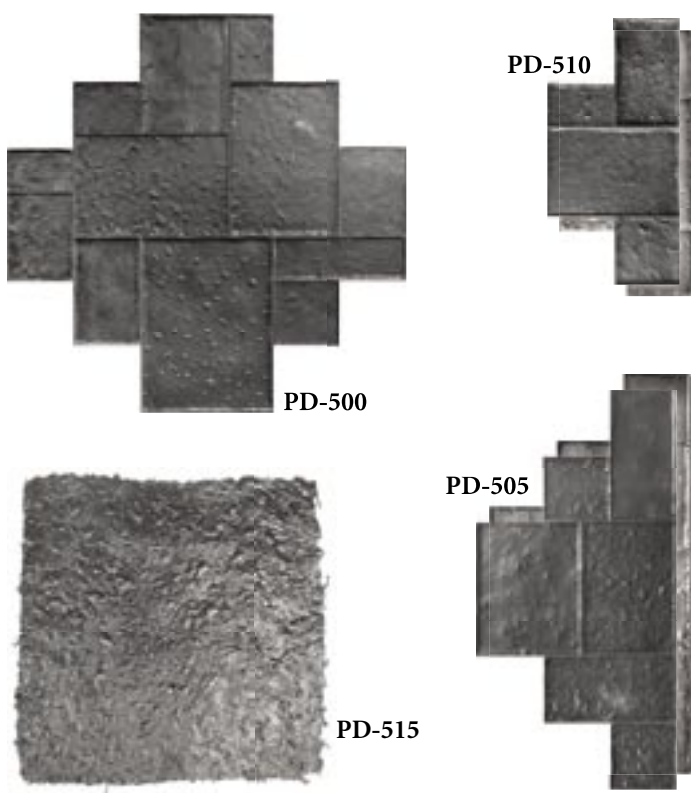
PD-240

| Part # | PAVIMENTO OF PARIS | Size | Weight | # per set |
|---------|--|-------------------|--------|-----------|
| PD-200 | Full tool | 50.5" x 25" | 20 lbs | 6 |
| PD-205 | Left Hand | 25.25" x 25" | 10 lbs | 1 |
| PD-210 | Right Hand | 25.25" x 25" | 10 lbs | 1 |
| PD-215 | Top Half | 50.25" x 12" | 10 lbs | 1 |
| PD-217 | Top Half Left | 25.125" x 12" | 5 lbs | 1 |
| PD-216 | Top Half Right | 25.125" x 12" | 5 lbs | 1 |
| PD-220 | Bottom Half | 50.25" x 13.675" | 10 lbs | 1 |
| PD-222 | Bottom Half Left | 25.125" x 13.675" | 5 lbs | 1 |
| PD-221 | Bottom Half Right | 25.125" x 13.675" | 5 lbs | 1 |
| PD-225 | Single Stone | 3.875" x 3.675" | 1 lb | 3 |
| PD-230 | Stacked Bond | 42.25" x 8.5" | 8 lbs | 1 |
| PD-235 | Granite Cobble | 43.5" x 6.25" | 6 lbs | 1 |
| PD-240 | 2x2 skin | 24" x 24" | 4 lbs | 1 |
| PD-245 | 1x1 skin | 12" x 12" | 1 lb | 1 |
| PD-200F | Full Floppy | 50.5" x 25" | 14 lbs | 1 |
| FM-6540 | Touch-up wheel | | | 1 |
| PD-200S | Full set PAVIMENTO OF PARIS with Instructional DVD | | | 23 |

Rotating Venetian Marble

Founded more than 1,500 years ago on 117 different islands, Venice, Italy is linked by a series of over 150 canals, 400 bridges and many ancient pavements.

Travertine and Marble streets and sidewalks, cut with precision were then placed by skilled masons. The original stones were unfinished, now with hundreds of years of floods and use the marble and granite have naturally become honed and smooth.



| Part # | ROTATING VENETIAN MARBLE | Size | Weight | # per set |
|---------|--|------------------|--------|-----------|
| PD-500 | Full tool | 53.75" x 53.75" | 30 lbs | 6 |
| PD-505 | Half Tool | 53.75" x 26.875" | 20 lbs | 2 |
| PD-510 | 1/4 Tool | 35.875" x 17.75" | 10 lbs | 2 |
| PD-515 | 2x2 skin | 24" x 24" | 4 lbs | 2 |
| PD-520 | 1x1 skin | 12" x 12" | 1 lb | 1 |
| PD-500F | Full Floppy | 53.75" x 53.75" | 25 lbs | 1 |
| PD-500S | Full set ROTATING VENETIAN MARBLE with Instructional DVD | | | 15 |

Hammered Sofia Stone

For over 7000 years Sofia, Bulgaria has been a meeting place of the four directions of the world making Sofia one of the oldest settlements in Europe.

Plazas, town squares and winding streets made from granite and lime stone with a Bush Hammered texture. A bush-hammered finish is one with a rough uniformly patterned surface produced by an impact tool with a smooth border around each stone creating a prestige look.



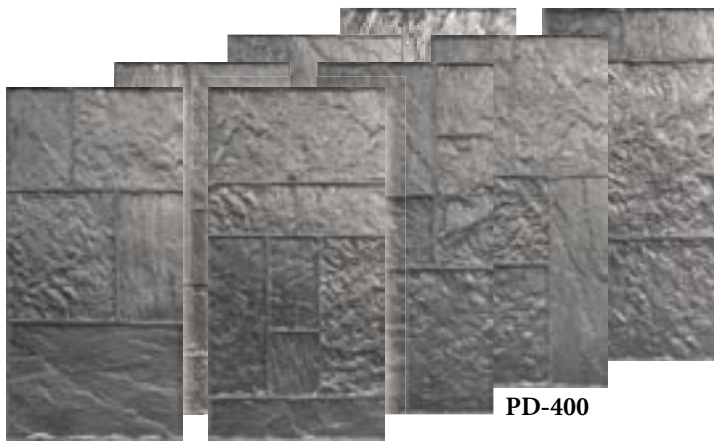
| Part # | HAMMERED SOFIA STONE | Size | Weight | # per set |
|---------|--|-------------------|--------|-----------|
| PD-300 | Full tool | 47.875" x 23.875" | 18 lbs | 8 |
| PD-305 | Single Stone | 23.875" x 12" | 6 lbs | 2 |
| PD-310 | Joint tools | assorted | 1 lb | 3 |
| PD-315 | 2x2 skin | 24" x 24" | 2 lbs | 1 |
| PD-320 | 1x1 skin | 12" x 12" | 1 lb | 1 |
| PD-300F | Full Floppy | 47.875" x 23.875" | 12 lbs | 1 |
| PD-300S | Full set HAMMERED SOFIA STONE with Instructional DVD | | | 16 |



Stones of Athens

The ancient city of Athens, Greece, crowned with marble temples such as the Parthenon and the Acropolis stands the test of time with millions of visitors walking the time old streets of Athens.

A variety of different stones helped create Athens Stone, one of most intricate tools using over 14 combined textures: Limestone, Marble and Granite are all used next to each other detailing the fine craftsmanship of ancient Greece.



PD-400



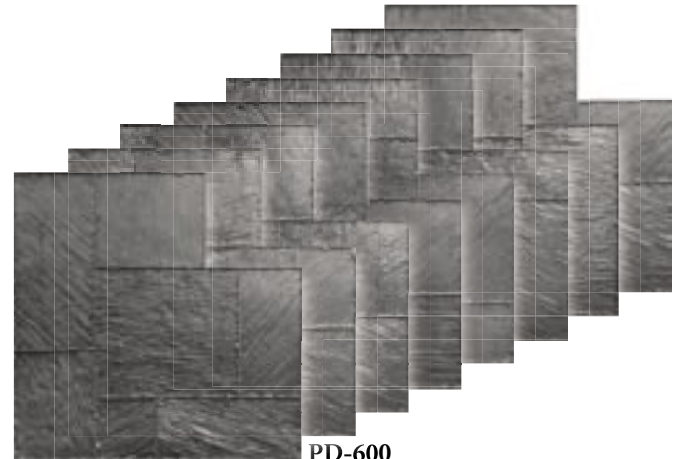
PD-405

| Part # | STONES OF ATHENS | Size | Weight | # per set |
|---------|--|------------------|--------|-----------|
| PD-400 | Full tool | 47.75" x 23.875" | 24 lbs | 8 |
| PD-405 | 2x2 skin | 24" x 24" | 4 lbs | 3 |
| PD-410 | 1x1 skin | 12" x 12" | 1 lb | 1 |
| PD-400F | Full Floppy | 47.75" x 23.875" | 17 lbs | 2 |
| FM-6570 | Touch-up wheel | | | 1 |
| PD-400S | Full set STONES OF ATHENS with Instructional DVD | | | 15 |

Fractured Cyprus slate

Cyprus, a small island with a large history, is surrounded by the Mediterranean Sea, soft sand and heavy slate hardscapes.

The natural paving material is a hardened slate found deep underground. Heavy in texture but difficult to shape, the joints have a fractured split edge.

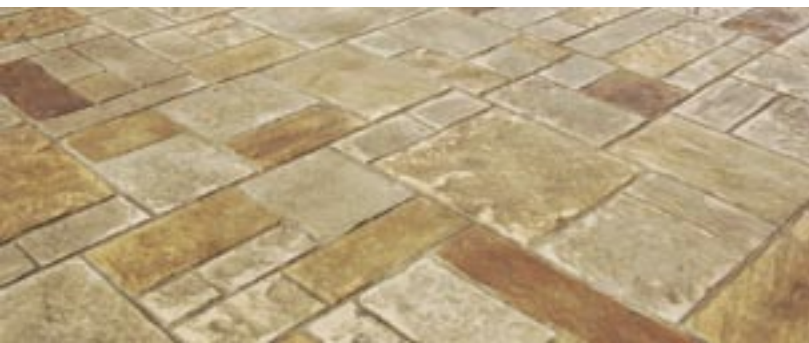


PD-600



PD-605

| Part # | FRACTURED CYPRUS SLATE | Size | Weight | # per set |
|---------|--|-------------------|--------|-----------|
| PD-600 | Full tool | 41.875" x 41.875" | 33 lbs | 8 |
| PD-605 | 2x2 skin | 24" x 24" | 4 lbs | 2 |
| PD-610 | 1x1 skin | 12" x 12" | 1 lb | 1 |
| PD-600F | Full Floppy | 41.875" x 41.875" | 20 lbs | 1 |
| FM-6520 | Touch-up wheel | | | 1 |
| P | Full set FRACTURED CYPRUS SLATE with Instructional DVD | | | 13 |



Contractors Choice Texture Mats

Brickform recognizes contractor feedback with the introduction of our Contractors Choice line comprised of everyone's favorite textures. Contractors Choice is a professional line of tools that are tough, slim, sleek and firm, for a great feel on and off the slab. These new tools are both economically and ecologically friendly, emphasizing quality and dependability.



6" x 6" Edinburgh Cobble, EF-520

26" x 36" (66.04 x 91.44 cm)

Black

A rugged weathered cobblestone pattern



Ashlar Cut Slate, EF-3125 S/O

23.125" x 23.125"

(58.74 x 58.74 cm)

Black A, B, C

A naturally laminated stone texture split along parallel planes, hand-tooled to create a more pronounced chipped fragmented texture with small deep joints



European Fan, EF-650 S/O

26" x 46" (66.04 x 116.84 cm)

Black

An elegant European fan pattern, consisting of slightly curved rectangular slate stones



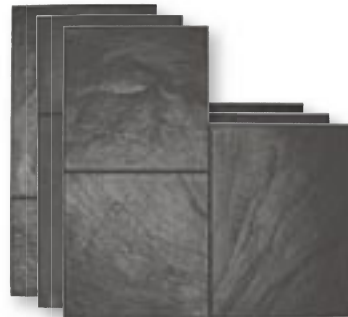
Random Stone, EF-700

29.125" x 29.125"

(73.97 x 73.97 cm)

Black A, B, C

Heavily textured random fieldstones

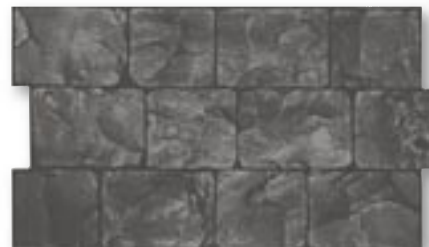


36" Ashlar Cut Slate, EF-3120 S/O Without Insert

36" x 36" (91.44 x 91.44 cm)

Black A, B, C

Stones with a slate surface, in an Ashlar pattern



London Cobble, EF-540 S/O

17" x 29.75" (43.18 x 75.56 cm)

Black

A traditional lightly textured cobblestone pattern



Large Ashlar Cut Slate, EF-3150 S/O

28" x 28" (71.12 x 71.12 cm)

Black A, B, C

Similar to Ashlar Cut Slate but the overall size is larger, with a softer texture



Herringbone Used Brick

EF-5000 S/O

32" x 36" (81.28 x 91.44 cm)

Black

A weatherworn brick surface with an uneven texture and rounded broken edges



Running Bond Used Brick

EF-5100 S/O

16" x 36.5" (40.64 x 92.71 cm)

Black

Used bricks laid end-to-end, with sandy joints



Running Bond New Brick, EF-5150 S/O

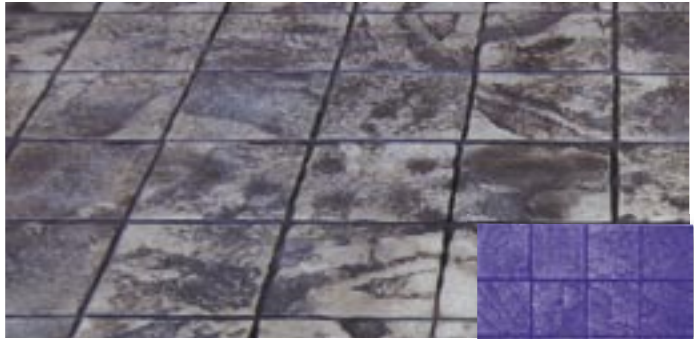
24" x 36.5" (60.96 x 92.71 cm) Black

A running bond pattern with smooth joints

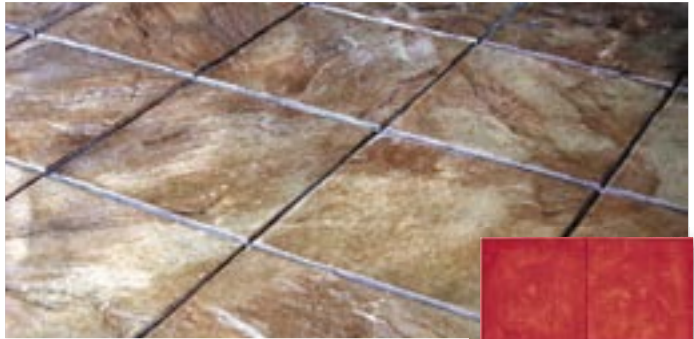
Contractors Choice EF tools cannot be used in conjunction with rigid FM tools.
Floppy tools are acceptable to use with EF only.

Stone Texture Mats

Whether you want the look of Granite, Blue Stone, Old English Cobblestone, Mexican Tile, or Pavers, BRICKFORM offers an array of texture mats that simulate a broad range of natural stone materials. Achieving these beautiful impressions with BRICKFORM precision tools provides an end result that is affordable and often easier to work with than natural materials. BRICKFORM has a stone texture tool ready to complement any design theme from an Italian Villa to an English Country Garden.



6" x 6" Granite Sets, FM-250 S/O
24" x 24" (60.96 x 60.96 cm)
Blue
Rough Stone texture with a hand-chiseled edge



12" x 12" Cut Stone, FM-300 S/O
24" x 24" (60.96 x 60.96 cm) Red
A rough natural stone, hand-tooled to create a chipped and fragmented texture



Windsor Cobble, FM-500 S/O
22.75" x 29.75" (57.78 x 75.56 cm)
Blue
A traditional cobblestone pattern with wider joints



6" x 6" Edinburgh Cobble, FM-520
26" x 36" (66.04 x 91.44 cm)
Yellow
A rugged weathered cobblestone pattern



Rough Cut Ashlar, FM-100 S/O
24" x 24" (60.96 x 60.96 cm)
Red, Yellow and Blue
Rough hand-tooled stones arranged in an Ashlar pattern



Australian Ashlar Cut Stone FM-150 S/O
23.25" x 23.25" (59.05 x 59.05 cm)
Red, Yellow and Blue
A coarse rugged Blue Stone set in an Ashlar pattern

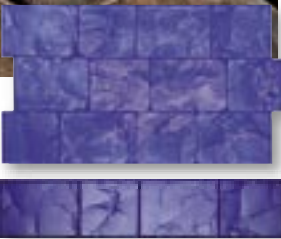


4" x 4" Slate Sets, FM-200 S/O
24" x 24" (60.96 x 60.96 cm) Red
Slate texture with a hand-chiseled edge



London Cobble, FM-540 S/O
 17" x 29.75" (43.18 x 75.56 cm) Blue
 A traditional lightly textured cobblestone pattern

London Cobble Strip, FM-560 S/O
 5.75" x 28.625" (14.605 x 72.71 cm) Blue
 A lightly textured cobblestone pattern in a single strip



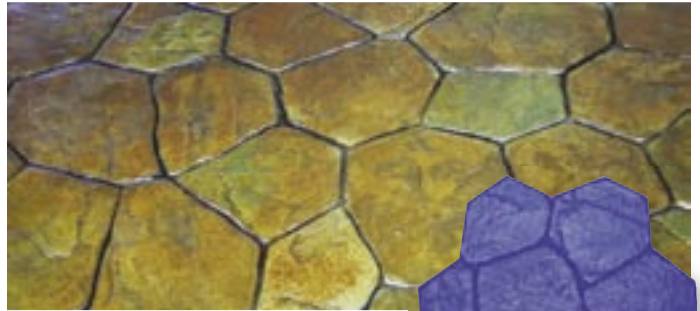
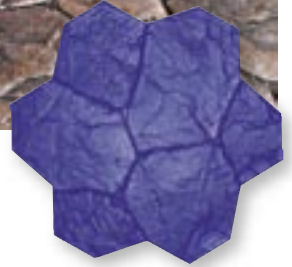
Cheshire Cobble (Smooth Grout), FM-525
 20.5" x 46" (52.07 x 116.84 cm) Red
 A traditional cobblestone pattern with smooth, ungrouted joints



Large Cobble, FM-580
 28.125" x 33.375" (71.43 x 84.77 cm) Blue
 Larger rough-cut cobblestones



Random Stone, FM-700
 29.125" x 29.125" (73.97 x 73.97 cm) Red, Yellow and Blue
 Heavily textured random fieldstones



Large Random Stone, FM-750
 36" x 36" (91.44 x 91.44 cm) Yellow and Blue
 Similar to Random Stone but 40% larger



Patio Stone, FM-1295 S/O
 36.5" x 36.5" (92.71 x 92.71 cm) Red
 A roughly textured arrangement of random stones



24" x 24" Yucatan Stone, FM-1100 S/O
 24" x 24" (60.96 x 60.96 cm) Blue
 A single square of rough Yucatan stone texture



4" x 8" Cut Stone Border, FM-1225
 8.375" x 33.5" (21.27 x 85.09 cm) Red
 A border of slate rectangles laid side-by-side





English Field Stone, FM-1350

18" x 39.75"
(45.72 x 100.965 cm) Red

A natural arrangement of river rock, emulating the look of smooth English fieldstones



Roman Cobble, FM-1465

48" x 24" (121.9 x 61cm)
Blue and Yellow

A historic reproduction of cobbles that have a variety of stone shapes for old world appeal.



European Fan, FM-650 S/O

26" x 46" (66.04 x 116.84 cm) Blue

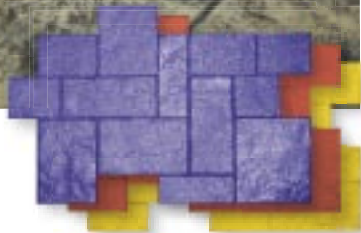
An elegant European fan pattern, consisting of slightly curved rectangular slate stones



Tuscany Stone, FM-1775

28" x 40" (71.12 x 101.60 cm)
Red, Yellow and Blue

A large tool with a stone texture and interlocking joints on all four sides



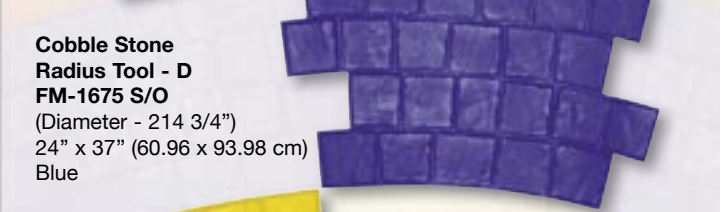
Also Available: Tuscany Border, FM-1785, 48" x 12"



Radius Tool

**Cobble Stone Radius Tool - E
FM-1685 S/O**

(Diameter - 286 3/4")
36" x 24" (68.58 x 60.96 cm)
Red



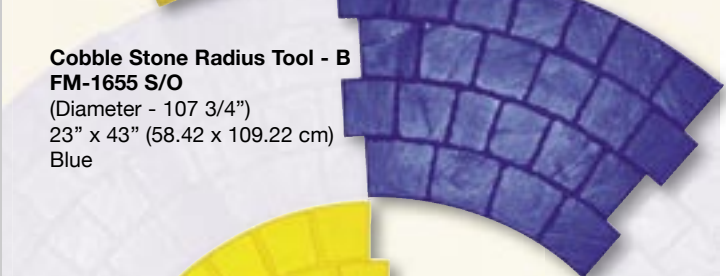
**Cobble Stone
Radius Tool - D
FM-1675 S/O**

(Diameter - 214 3/4")
24" x 37" (60.96 x 93.98 cm)
Blue



**Cobble Stone Radius Tool - C
FM-1665 S/O**

(Diameter - 167 1/4")
30" x 30" (76.2 x 76.2 cm)
Yellow



**Cobble Stone Radius Tool - B
FM-1655 S/O**

(Diameter - 107 3/4")
23" x 43" (58.42 x 109.22 cm)
Blue



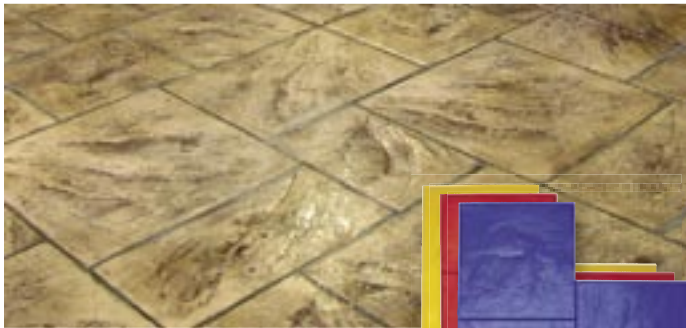
**Cobble Stone Radius Tool - A
FM-1605 S/O**

(Diameter - 59 3/4")
30" x 31" (76.2 x 78.74 cm)
Yellow



Slate Texture Mats

Slate is a sleek, metamorphic rock with fine veining patterns. The grain pattern of slate makes it a common resource for tile flooring because it is easily split into thin sheets. BRICKFORM slate texture tools recreate the elegant, clean design of slate without the expense and hassle of installing fragile natural stones. BRICKFORM Ashlar texture mats reflect the handcrafted, intricately-fitting stones of historic Ashlar configurations.



36" Ashlar Cut Slate, FM-3120 S/O

36" x 36" (91.44 x 91.44 cm)

Red, Yellow and Blue

Stones with a slate surface, in an Ashlar pattern

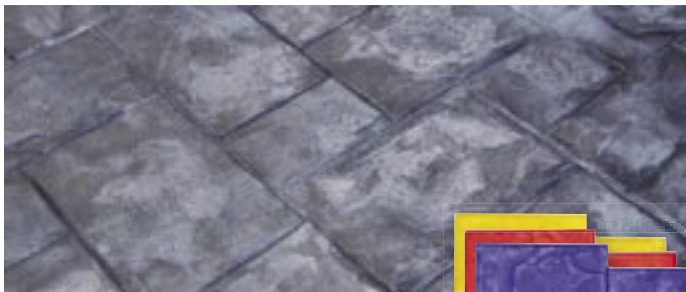


Ashlar Cut Slate, FM-3125 S/O

23.125" x 23.125" (58.74 x 58.74 cm)

Red, Yellow and Blue

A naturally laminated stone texture split along parallel planes, hand-tooled to create a more pronounced chipped fragmented texture with small deep joints



Aidan Ashlar, FM-3130 S/O

23.125" x 23.125" (58.74 x 58.74 cm)

Red, Yellow and Blue

Similar to the Ashlar Cut Slate but with broad shallow joints



Large Ashlar Cut Slate FM-3150 S/O

28" x 28" (71.12 x 71.12 cm)

Red, Yellow and Blue

Similar to Ashlar Cut Slate but the overall size is larger, with a softer texture



24" x 24" Slate Texture, FM-3200 S/O

24" x 24" (60.96 x 60.96 cm)

Red, Yellow and Blue

One complete stone with hand-tooled slate texture



12" x 12" Slate, FM-3250 S/O

24" x 24" (60.96 x 60.96 cm)

Blue

Slate tiles laid in a parallel pattern

12" x 12" Slate Border

FM-3300 S/O

12" x 48"

(30.48 x 121.92 cm)

Red

A border of four 12" slate squares in a row





Slate with Diamond Inset
FM-3350 S/O

24" x 48" (60.96 x 121.92 cm)

Blue

An elegant arrangement of Italian slate, with diamond-shaped insets for added detail



Walkway Slate, FM-3400 S/O

18" x 36" (45.72 x 91.44 cm)

*Red, Yellow and Blue

*Stone sizes vary

Square and rectangular slate tiles, of various sizes, set in parallel rows.



California Weave, FM-3500 S/O

24" x 24" (60.96 x 60.96 cm) Red

Slate bricks form a woven pattern around a slate square.



Herringbone Slate, FM-3550 S/O

32" x 40" (81.28 x 101.6 cm) Blue

A classic herringbone pattern of slate stones laid at right angles to each other



New England Basket Weave
FM-3600 S/O

24" x 36" (60.96 x 91.44 cm) Blue

Hand-tooled slate in a basket weave pattern



Regal Ashlar (Blue Stone)

FM-3650 S/O

36" x 36" (91.44 x 91.44 cm)

Red, Yellow, and Blue

Blue stone textured tiles, with worn beveled edges, arranged in an ashlar pattern



Grand Ashlar, FM-3675

36" x 36" (91.44 x 91.44 cm)

Red, Yellow and Blue

Stones of various shapes and sizes laid in an Ashlar pattern, with a slate texture

Brick Texture Mats



Herringbone Used Brick FM-5000 S/O

32" x 36" (81.28 x 91.44 cm) Red
A weatherworn brick surface with an uneven texture and rounded broken edges



Herringbone New Brick (Fine Grout), FM-5050 S/O

32" x 36" (81.28 x 91.44 cm) Red
A wire-cut common brick texture with sharp corners and few indentations or irregularities over the surface



Running Bond Used Brick FM-5100 S/O

16" x 36.5" (40.64 x 92.71 cm) Blue
Used bricks laid end-to-end, with sandy joints



Running Bond New Brick FM-5150 S/O

24" x 36.5" (60.96 x 92.71 cm) Red
A running bond pattern with smooth joints



Basket Weave Used Brick FM-5200 S/O

15.375" x 30.75" (39.05 x 78.10 cm)
Blue

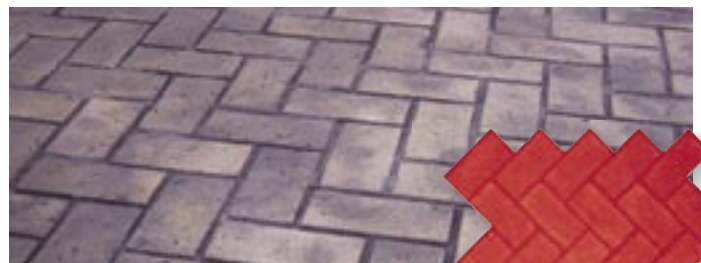
Used bricks in a basket weave pattern with smooth un-grouted joints



Basket Weave New Brick FM-5250 S/O

16" x 32" (40.64 x 81.28 cm) Blue

New bricks in a basket weave pattern with sandy joints



Herringbone New Brick (Sanded Joint) FM-5900 S/O

32" x 36" (81.28 x 91.44 cm) Red
New bricks with sandy joints



4" x 8" New Brick Border, FM-5325, S/O

8.5" x 32.25" (21.59 x 81.92 cm) Red
A border of new bricks laid side-by-side

4" x 8" Used Brick Border, FM-5300 S/O

8.5" x 32" (21.59 x 81.28 cm) Red
A border of used bricks laid side-by-side



Single New Brick, FM-5550 S/O

4" x 8" (10.16 x 20.32 cm) Red
A single new brick with sharp edges

Also Available:

Single Used Brick, FM-5500 S/O

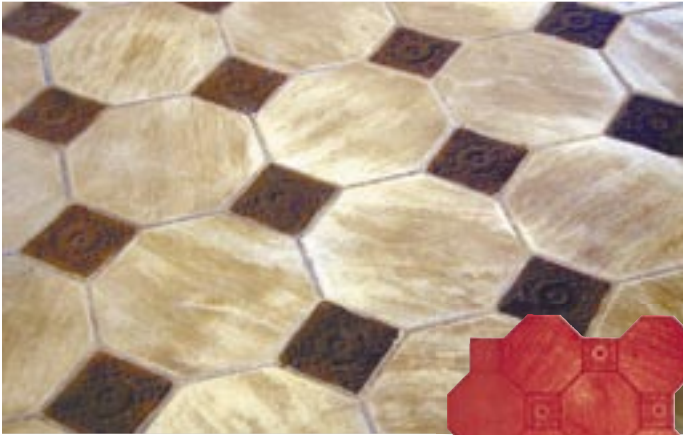
4" x 8" (10.16 x 20.32 cm) Blue
A single used brick with rounded edges



Used Brick Runner, FM-5600 S/O

4.5" x 32.375" (11.43 x 82.23 cm) Blue
A border of used bricks laid end-to-end

Tile Texture Mats



Santa Barbara Tile, FM-7025 S/O

30.75" x 30.75" (78.1 x 78.1 cm)

Red

Slate textured octagons and rosette squares laid out in a unique, highly decorative pattern



Octagon Tile, FM-7100 S/O

37.5" x 37.5" (95.25 x 95.25 cm)

Blue

A blue stone texture laid out in a highly decorative pattern



Chateau Ashlar, FM-7450

36" x 36" (91.44 x 91.44 cm)

Red, Yellow and Blue

A smooth and elegant Ashlar pattern consisting of rounded stones with sandy joints



Wood Texture Mats

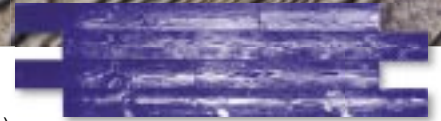


Classic Wood FM-8700 S/O

81.5" x 21.75" (207 x 55.2 cm)

Blue

Combining multiple wood grains to offer a bold, pronounced, exposed grain texture with six-inch wide planks



2' Cedar Wood Plank, FM-8110 S/O

11.5" x 24"

(29.21 x 60.96 cm) Blue

3' Cedar Wood Plank, FM-8210 S/O

11.5" x 36"

(29.21 x 91.44 cm) Blue

4' Cedar Wood Plank, FM-8310 S/O

11.5" x 48"

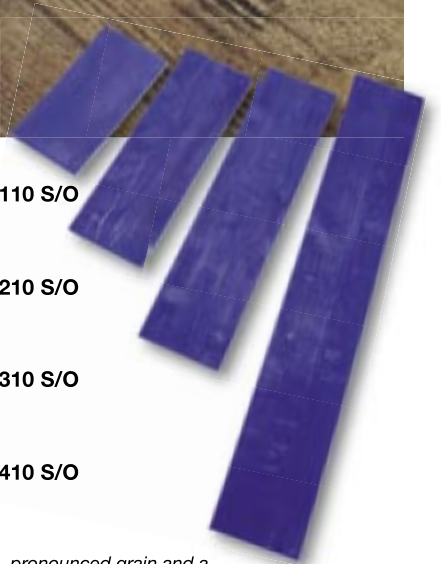
(29.21 x 121.92 cm) Blue

6' Cedar Wood Plank, FM-8410 S/O

11.5" x 72"

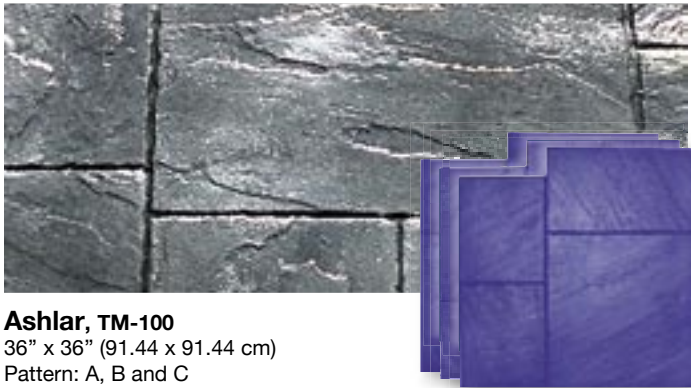
(29.21 x 182.88 cm) Blue

A cedar wood texture with coarse, pronounced grain and a rough surface appearance that incorporates oversized nail heads at each end



Creative Images Texture Mats

BRICKFORM developed the Creative Images line of texture mats to incorporate the latest in textures, designs and usability. Creative Images mats are larger, an average of nine square feet, which means fewer placements and less touch-up work. Creative Images mats are made of firmer material, which allows you to begin stamping sooner. Choose Creative Images to create the best possible impression, with the least amount of effort.

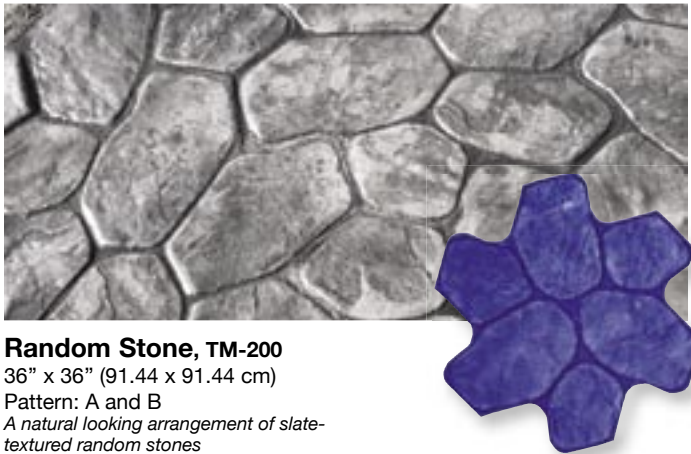


Ashlar, TM-100

36" x 36" (91.44 x 91.44 cm)

Pattern: A, B and C

An Ashlar pattern of blue stone slate

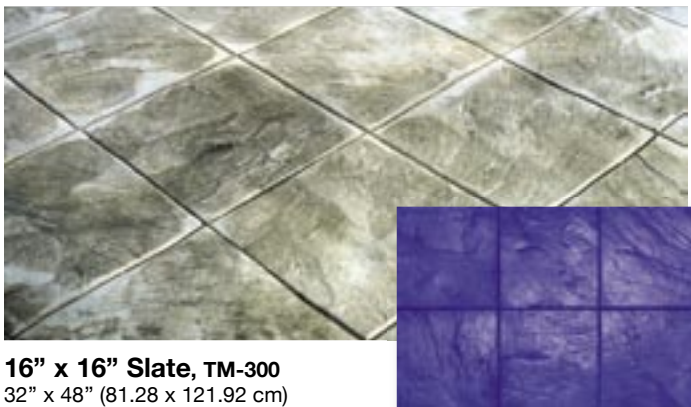


Random Stone, TM-200

36" x 36" (91.44 x 91.44 cm)

Pattern: A and B

A natural looking arrangement of slate-textured random stones



16" x 16" Slate, TM-300

32" x 48" (81.28 x 121.92 cm)

Pattern: A

Slate squares in two rows, with angled, un-grouted joints

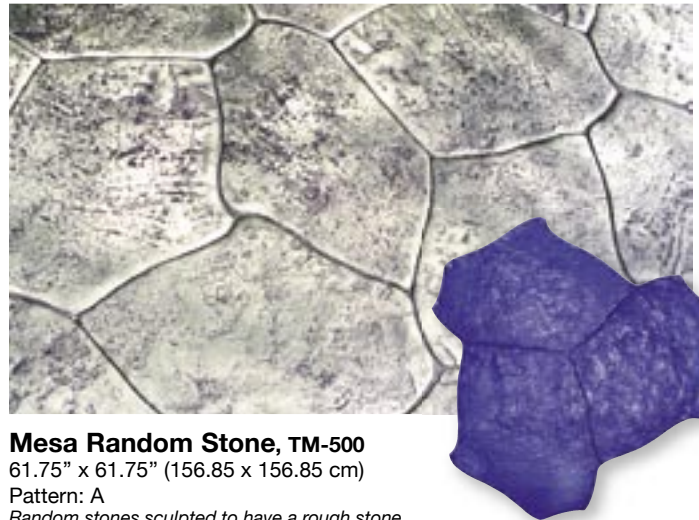


European Fan, TM-400

28" x 50" (71.12 x 127 cm)

Pattern: A

Curved slate bricks gracefully arranged in a European Fan pattern

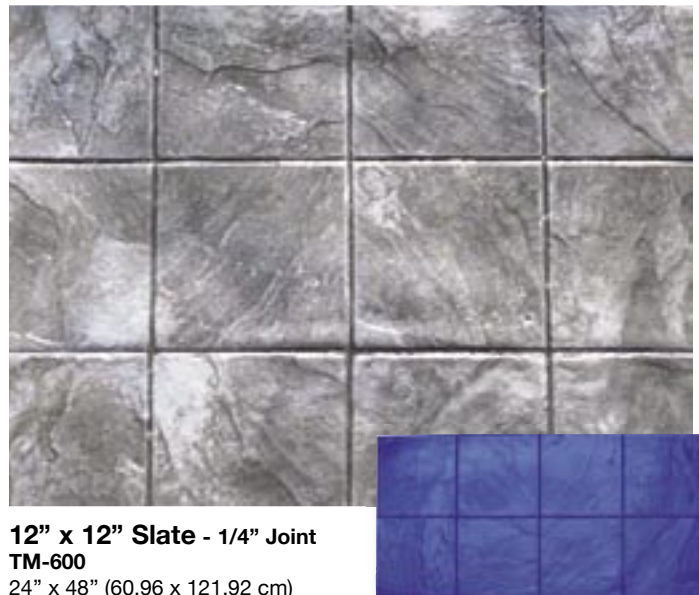


Mesa Random Stone, TM-500

61.75" x 61.75" (156.85 x 156.85 cm)

Pattern: A

Random stones sculpted to have a rough stone, irregular shape

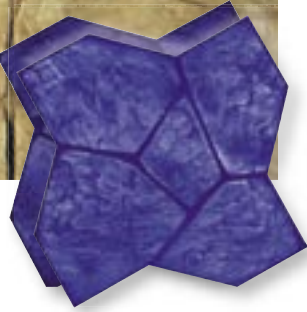
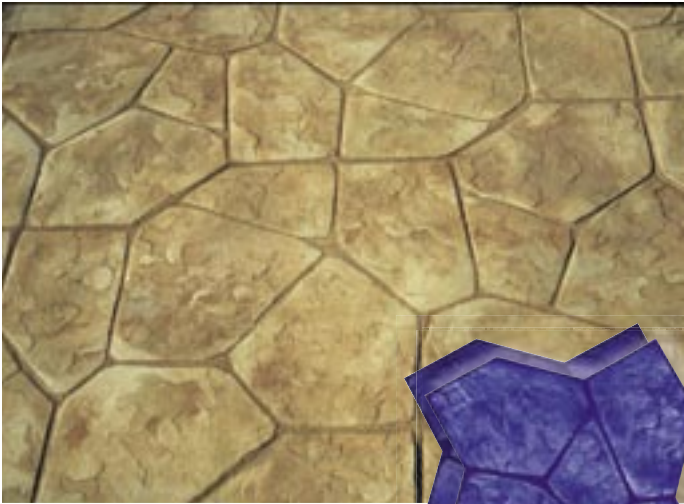


12" x 12" Slate - 1/4" Joint TM-600

24" x 48" (60.96 x 121.92 cm)

Pattern: A

Rows of slate squares with beveled edges



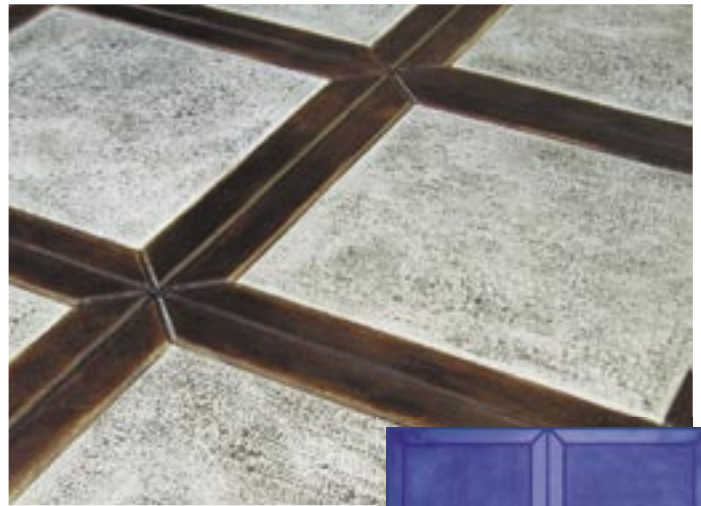
Flagstone, TM-700
48" x 48" (121.92 x 121.92 cm)
Pattern: A and B
Flagstones with hand chiseled edges grouped in a random formation



12" x 12" Slate-Butt Joint TM-900
24" x 48" (60.96 x 121.92 cm)
Pattern: A
Sharp slate squares butted up against each other in two rows



Pennsylvania Cobble (Sanded Joint) TM-820
31.5" x 47.5" (80.01 x 120.65 cm)
Pattern: A
A staggered pattern of cobblestone with sandy joints and rounded edges



30" x 30" Bushed Stone TM-1200
30" x 60" (76.2 x 152.4 cm)
Pattern: A
Two bushed stones with square corners and sharp beveled edges

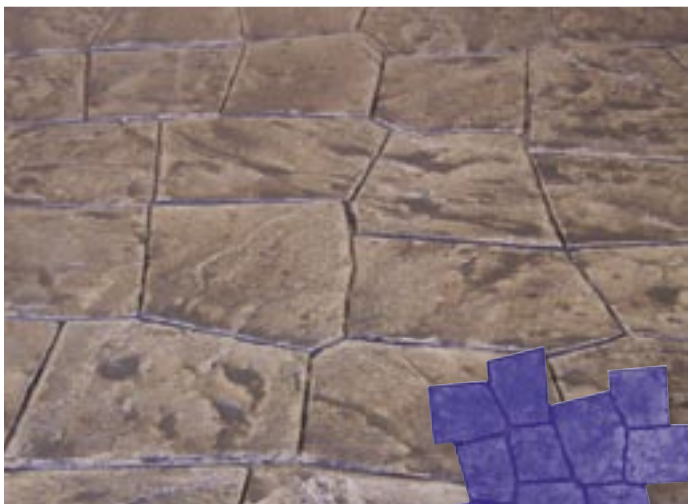


Pennsylvania Station Cobble (Smooth Joint) TM-840
53.5" x 30.875" (135.89 x 78.42 cm)
Pattern: A
A staggered pattern of cobblestone with smooth joints and rounded edges

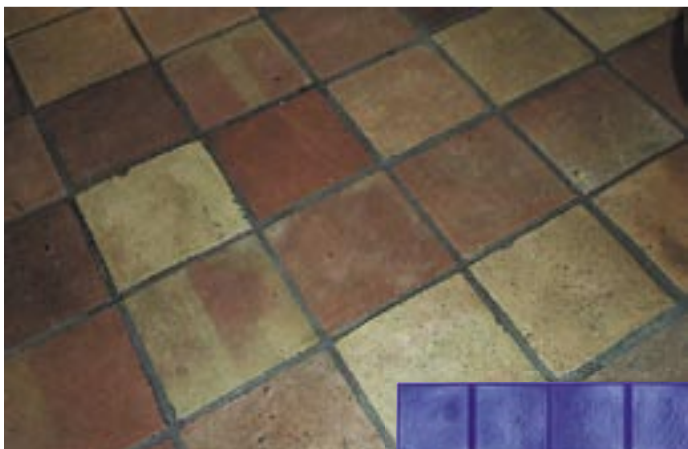
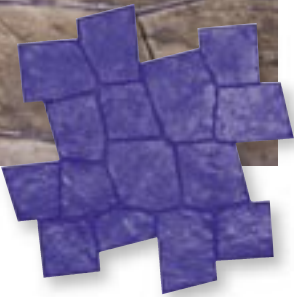


Castle Stone, TM-1300
47.5" x 47.5" (120.65 x 120.65 cm)
Pattern: A and B
Irregular shaped natural stones

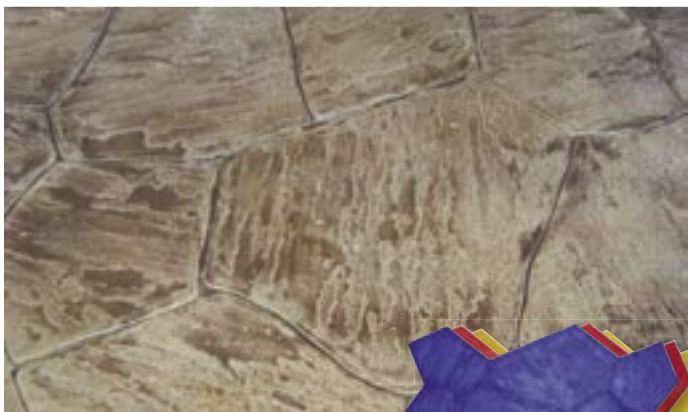
Creative Images Texture Mats *continued*



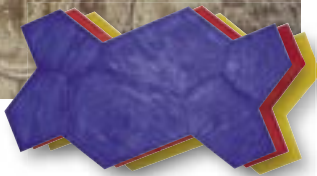
Luccia Stone, TM-1350
 44.875" x 44.875" (113.98 x 113.98 cm)
 Pattern: A
Slate stones with irregular edges, in a random pattern



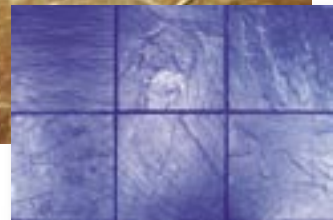
12" x 12" Mexican Tile, TM-1400
 24" x 48" (60.96 x 121.92 cm)
 Pattern: A
Beautiful Mexican tiles with sandy joints



Verona Stone, TM-1500
 42.75" x 68.5" (108.58 x 173.99 cm)
 Red, Yellow and Blue
A unique random pattern of irregular stones



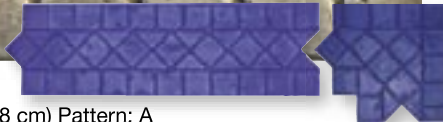
18" x 18" Slate, TM-1620
 36" x 54" (91.44 x 137.16 cm)
 Pattern: A
Three slates with sharp edges, laid in two rows



Slate Border, TM-1010
 16" x 40" (40.64 x 101.6 cm)
 Pattern: A



Tile Border, TM-1020
 14" x 47.75" (35.56 x 121.28 cm) Pattern: A
TM-1020-1 Tile Border Corner Piece
 18.25" x 20.75" (46.36 x 52.71 cm) Pattern: A



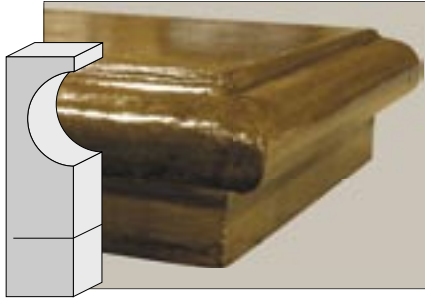
Bushed Border, TM-1030
 12" x 48" (30.48 x 121.92 cm)
 Pattern: A



Ultra-Liners

With the contractor in mind, Ultra-Liners take the hassle out of doing decorative step faces.

- Re-usable liner for steps, wall caps, counter-tops and pool copings
- Creates smooth and easy-to-finish surfaces
- Tight cell structure foam for long lasting liners
- Easy to bend and mold into shape
- Pre-cut guide at 5.5"
- Sized to dimensional lumber
- Offered in approximate 4' and 8' lengths for versatility and reduced shipping cost
- Works great with Brickform Liquid Release



SL-2000 48" Sandstone Ultra-Liner
7.25" x 48" (19.1 x 121.92 cm)

SL-2025 96" Sandstone Ultra-Liner
7.25" x 96" (19.1 x 243.8 cm)



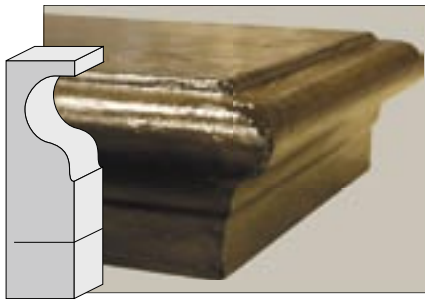
SL-2050 48" Capstone Ultra-Liner
7.25" x 48" (19.1 x 121.92 cm)

SL-2075 96" Capstone Ultra-Liner
7.25" x 96" (19.1 x 243.8 cm)



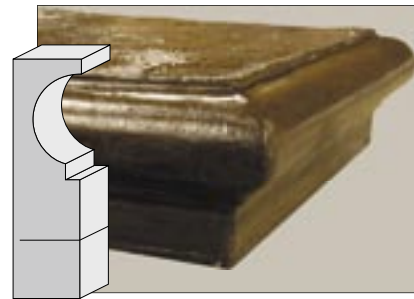
SL-2100 Intermediate 48" Ultra-Liner
7.25" x 48" (19.1 x 121.92 cm)

SL-2125 Intermediate 96" Ultra-Liner
7.25" x 96" (19.1 x 243.8 cm)



SL-2150 Ogee 48" Ultra-Liner
7.25" x 48" (19.1 x 121.92 cm)

SL-2175 Ogee 96" Ultra-Liner
7.25" x 96" (19.1 x 243.8 cm)



SL-2200 Classic 48" Ultra-Liner
7.25" x 48" (19.1 x 121.92 cm)

SL-2225 Classic 96" Ultra-Liner
7.25" x 96" (19.1 x 243.8 cm)



SL-2250 Wall Cap 48" Ultra-Liner
7.25" x 48" (19.1 x 121.92 cm)

SL-2275 Wall Cap 96" Ultra-Liner
7.25" x 96" (19.1 x 243.8 cm)

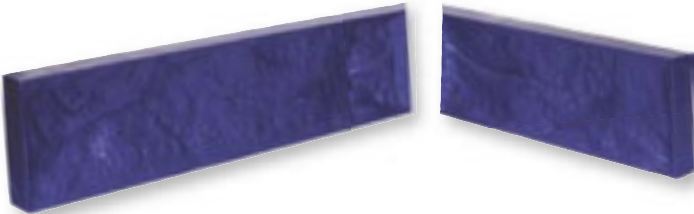
*Lengths of Ultra-Liner tools is approximate, measured before placement.

**Also available: Twist-to-break wire kit (SL-2950), double-sided tape (SL-2975)



Step-Liners

BRICKFORM Step-Liners are designed to produce texture on the edges of concrete steps, risers, terracing and even concrete countertops. These Step-Liners can be reused many times. Simply attach the liners to your riser forms and impart the beauty of natural stone. They have no top or bottom and can be reversed to reduce pattern repeat. BRICKFORM Step-Liners are high-quality, flexible polyurethane, engineered to be lightweight and extremely durable.



45° Angle Step Liner (Two shown to form corner)



SL-350

45° 24" Step Liner

6" x 26.375" (15.24 x 66.99 cm)

Pattern: A or B



SL-450

45° 16" Step Liner

6" x 18.375" (15.24 x 45.72 cm)

Pattern: A or B

Hint: To reduce pattern repeat, use A and B together.

Hint: Use as a curb edge to mimic split stone.



- A variety of standard sizes
- Easy pre-cut 45° joints available
- Superb detail
- Reusable
- Up to 1 1/2" of texture

Also Available:

SL-100

48" Step Liner

6" x 48" (15.24 x 121.92 cm)

Pattern: A or B

SL-300

24" Step Liner

6" x 24" (15.24 x 60.96 cm)

Pattern: A or B

SL-200

72" Step Liner

6" x 72" (15.24 x 182.88 cm)

Pattern: A

SL-400

16" Step Liner

6" x 16" (15.24 x 40.64 cm)

Pattern: A or B



Step Liners in Foam Urethane

- Lightweight
- Increased Flexibility

SL-3500

45 degree 24" Step Liner In Foam Urethane

6" x 26.375"

Pattern A or B

SL-4500

45 degree 16" Step Liner In Foam Urethane

6" x 18.375"

Pattern A or B

SL-1000

48" Step Liner In Foam Urethane

6" x 48"

Pattern A or B

SL-3000

24" Step Liner In Foam Urethane

6" x 24"

Pattern A or B

SL-4000

16" Step Liner In Foam Urethane

6" x 16"

Pattern A or B

SL-5000

72" Step Liner In Foam Urethane

6" x 72"

Pattern A



Countertop Liner

FM-6610

Stone Countertop Liner

2" x 98"

Dimensional Step Liners

- Sized to Dimensional Lumber
- Thin
- Attach To Forms
- Flexible For Creating Organic Shapes

SL-500A

Stone Step Liner (Dimensional lumber)

8" (7.25") x 6'

SL-530A

Stone Step Liner (Dimensional lumber)

4" (3.5") x 6'

SL-525A

Stone Step Liner (Dimensional lumber)

6" (5.5") x 6'



Slim-Strip Step Liners

- Ultra-Thin
- Super Flexible For Creating Organic Shapes
- Available In Slate And Stone Textures
- Sized To Dimensional Lumber

SL-600A

6" Stone Slim Strip

6" (5.5") x 8'

SL-615A

4" Stone Slim Strip

4" (3.5") x 8'

SL-625A

8" Stone Slim Strip

8" (7.25") x 8'

SL-650A

6" Slate Slim Strip

6" (5.5") x 8'

SL-665A

4" Slate Slim Strip

4" (3.5") x 8'

SL-675A

8" Slate Slim Strip

8" (7.25") x 8'



Quick Strips

BRICKFORM Quick-Strips are perfect for creating a more decorative joint. By placing the Brickform Quick-Strips into your control joints prior to stamping with our seamless skins, you can transform your slab form ordinary to extraordinary in no time. (Sold 5 per case.)



FM-6580 Chiseled V-Joint, Offered in 5 foot strips



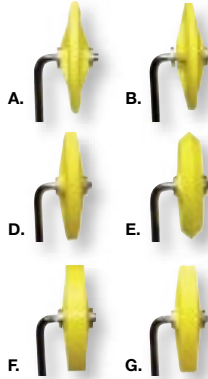
FM-6590 Sanded Stone Joint, Offered in 5 foot strips

Texturing Accessories

Available for your finishing needs, BRICKFORM has all the texturing accessories to complement the full-line of texture mats.

BRICKFORM Touch-up Wheels

BRICKFORM Touch-up Wheels are part of the BRICKFORM Texture Mat System and are designed to help installers create clean and crisp grout lines. These wheels are very versatile and lightweight, making them easy to use; even in the tightest areas. BRICKFORM Touch-up Wheels are available in seven styles to compliment the full range of BRICKFORM Texture Mats.



| | | | |
|----|---------|-------------------|-------------|
| A. | FM-6510 | 1/4" Round Joint | 2" Diameter |
| B. | FM-6520 | 3/16" Flat Joint | 2" Diameter |
| C. | FM-6530 | 3/8" Flat Joint | 2" Diameter |
| D. | FM-6540 | 3/8" Sanded Joint | 2" Diameter |
| E. | FM-6550 | 1/2" Wedge Joint | 2" Diameter |
| F. | FM-6560 | 1/2" Flat Joint | 2" Diameter |
| G. | FM-6570 | 1/2" Sanded Joint | 2" Diameter |



BRICKFORM Pounders

Find the pounder that is right for you and your job. BRICKFORM now offers a new BRICKFORM Aluminum Handle Pounder that is light with a long-handled grip. It is designed with a flexible head that reduces fatigue on the neck and shoulders. Of course, you can't forget about the popular Original BRICKFORM Pounder that has a rigid head with a fixed placed handle. Two great pounders to achieve optimum detail on the concrete surface.

| | | | | |
|----|--------|-------------------|-----------|---------|
| A. | FP-100 | Fiberglass Handle | 10" x 10" | 19 Lbs. |
| B. | FP-200 | Fiberglass Handle | 12" x 12" | 20 Lbs. |
| C. | FP-300 | Fiberglass Handle | 15" x 15" | 23 Lbs. |
| D. | FP-400 | Aluminum Handle | 12" x 12" | 15 Lbs. |
| E. | FP-500 | Aluminum Handle | 15" x 15" | 18 Lbs. |

FP-500



BRICKFORM Aluminum Chisels

BRICKFORM Aluminum Chisels are lightweight, easy to handle and designed with the concrete finisher in mind. Cut control joints in wet concrete, create your own pattern or touch-up grout lines with ease. BRICKFORM Aluminum Chisels are available in seven different sizes to fit your needs.

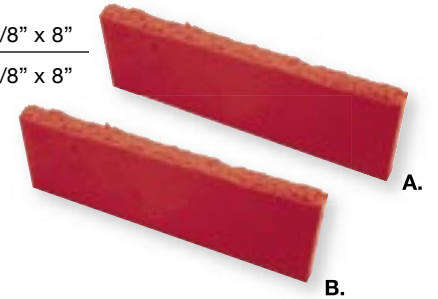
| | | |
|----|-------|---------------|
| A. | A-600 | 30" Chisel |
| B. | A-700 | 18" Chisel |
| C. | A-705 | 12" Chisel |
| D. | A-800 | 8" Chisel |
| E. | A-803 | 4" Chisel |
| F. | A-804 | 3" Chisel |
| G. | A-805 | 1 1/2" Chisel |



BRICKFORM Grouting Tools

BRICKFORM Grouting Tools create a sanded grout line. Use the rigid tool for straight lines and the flexible tool for curved or wavy grout lines.

| | | | |
|----|---------|----------|-----------|
| A. | FM-6310 | Rigid | 3/8" x 8" |
| B. | FM-6300 | Flexible | 3/8" x 8" |



Design Tape

- Create the patterns that mimic stone, tile or slate
- Will not disintegrate, shed fiber hairs or cause grout bleeds
- No glue residue
- Replicates most patterned surface affordably
- Strong and versatile
- Eliminates the need for chalk lines
- 180 feet per roll



| | |
|-------|--|
| LDT90 | 1/4" Grout Line Design Tape (36/ tube 144/ case) |
| LDT91 | 1/2" Grout Line Design Tape (18/ tube 48/ case) |
| LDT92 | 3/4" Grout Line Design Tape (12/ tube 48/ case) |
| LBT95 | 1/2" Brick Design Tape (18/ tube 72/ case) |

Versatile Coloring Products

Gray concrete can be structurally sound but visually unattractive. BRICKFORM offers a wide range of decorative answers that provide a dramatic element for any setting, from a patio to a showroom floor. On the next pages you will discover many coloring treatments to meet your needs.



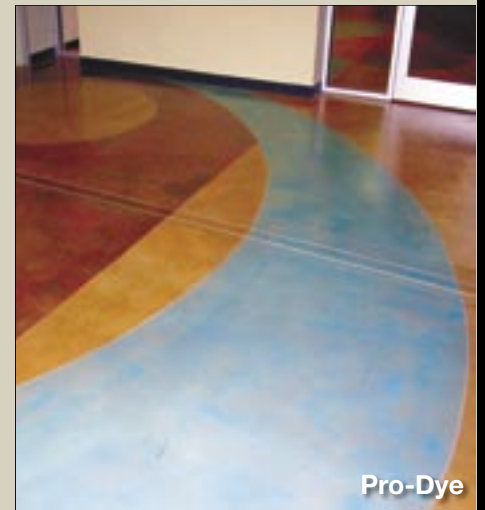
Color Hardener



Blush-Tone Acid Stain



Cem-Coat



Pro-Dye



FreestylePRO



Integral Color

BRICKFORM Color Hardener

Concrete Colorant and Hardener

BRICKFORM Color Hardener is manufactured with the finest UV-resistant pigments and premium aggregates. BRICKFORM Color Hardener is designed to work with imprinting tools to produce clear, sharp impressions that enhance the finished appearance of any hardscape. When properly applied and troweled into newly placed, fresh concrete, it forms a colored concrete surface that is resistant to weathering, wear and normal abrasion. Color Hardener HD (Heavy Duty) also available.



- Non-fading
- Denser, more durable surface
- Improves abrasion resistance
- Can be antiqued and stained
- 42 standard colors
- Custom colors available
- Compatible with Stampable Overlay OL-60

CH 42 Standard Colors 5 Gallon Bucket
(Including black and white)

- Custom Colors and Color Matching Available

** Use Day1 as a troweling aid, densifier and curing agent. See pg 48.*

** Liquid Release is a colorless bond-breaker. See pg 48.*

COLORSPREADER™

The COLORSPREADER™ gives the contractor the ability to apply dry shake materials to the surface of concrete in it's plastic state, faster, easier, and with more uniform coverage, producing a higher quality installation.

- Increases reach (remotely broadcast from up to 30')
- Reduces health risks
- Reduces pigment loss
- One year warranty

CHS-2400, 24 inch Remote Controlled COLORSPREADER
 CHS-4800, 48 inch Remote Controlled COLORSPREADER
 CHS-2401, Diamond Plate Aluminum Storage Case for 24"
 CHS-4801, Diamond Plate Aluminum Storage Case for 48"



BRICKFORM Antique Release

Colored Bond-Breaker

BRICKFORM Antique Release imparts a second color while serving as a bond breaker for stamping. It is made from a finely ground formula that creates beautifully antiqued and textured concrete surfaces. Antique Release is available in 42 standard colors to match or contrast with BRICKFORM Color Hardener. Custom colors and color matching are also available.



- Prevents concrete buildup
- Prolongs tool life
- Fade-resistant
- Unlimited effects and color combinations
- 42 standard colors
- Custom colors available

RA 42 Standard Colors 5 Gallon Bucket
(Including black and white)

- Custom Colors and Color Matching Available



BRICKFORM Antique-It

Antiquing Agent

BRICKFORM Antique-It is a water soluble antiquing agent designed to impart a secondary color or highlight over stamped concrete or textured overlays. Antique-It is easy to apply, dries fast and provides a durable color that closely resembles the look of release powder.



AN 42 Standard Colors 3 lb container

- Custom Colors and Color Matching Available

BRICKFORM Cem-Coat Made-to-Order

Colored Cementitious Coating

BRICKFORM Cem-Coat is a richly pigmented coating, opaque, high-strength, and perfect for coloring a all 42 standard BRICKFORM Color Hardener and BRICKFORM Antique Release colors. Custom color matching is also available.

- Richly pigmented colors
- UV-resistant
- Use to antique, marbleize, and faux paint
- Suitable for all cementitious surfaces



| | | |
|-----|---|--------------|
| CC | 42 Standard Colors | 1 Gallon Kit |
| CC4 | 42 Standard Colors (Including black and white) | 4 Gallon Kit |



Standard Color Selection Guide

BRICKFORM Color Hardener, Antique Release, Antique-It Standard Colors, Cem-Coat, FreestylePRO and Overlay Liquid Colorant

(See page 43 for companion products)



320 Golden Sandstone



1080 Adobe Buff



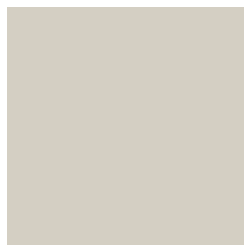
1070 Sandy Buff



325 Sandstone



350 Desert Tan



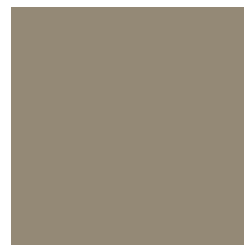
1030 Ash White



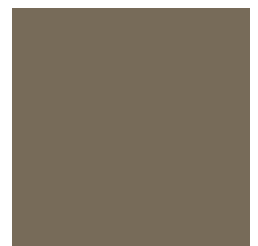
250 Oyster White



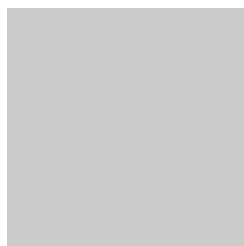
1090 Sun Buff



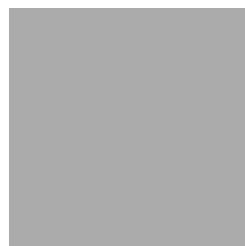
1010 Smokey Beige



300 Nutmeg



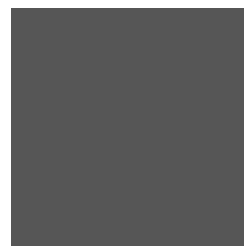
625 Dover Blue



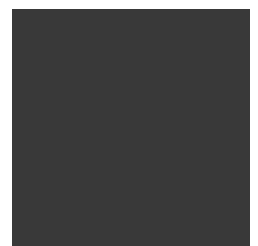
615 Stone Gray



600 Light Gray



200 Medium Gray



100 Dark Gray



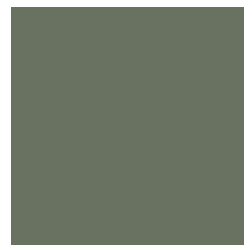
815 French Gray



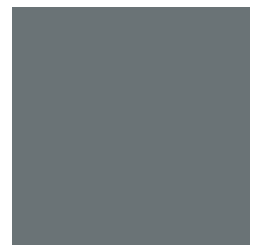
1040 Weathered Sage



1045 Shadow Slate



825 Slate Green



650 Smokey Blue*

Custom colors and color matching services available
Standard colors not shown: (all products) 900-Black, 1000-White

*BRICKFORM Overlay Liquid Colorant not available in Smokey Blue.



Disclaimer - When choosing colors, use the stand-alone BRICKFORM color selection guide for more accurate matching. Colors shown here display only the range of BRICKFORM options available. To confirm an exact color, have your contractor prepare a color sample for your approval before actual construction. BRICKFORM accepts no responsibility for color matching or misprints.



330 Coconut



735 Cappuccino



310 Cream Beige



1035 Summer Beige



1055 Pecos Sand



1020 Antique Rose



1050 Antique Cork



515 Sunbaked Clay



700 Terra Cotta



425 Autumn Brown



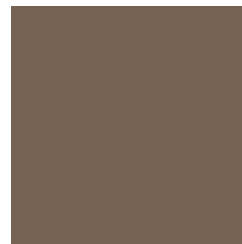
1015 Blush Beige



375 Buff Tan



525 Dusty Rose



400 Chestnut



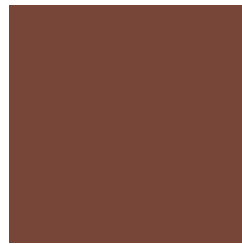
810 Walnut



115 Venetian Pink



1065 Quarry Red



500 Tile Red



575 Victorian Red



550 Brick Red




BRICKFORM FreestylePRO Stain

Penetrating Water-Based Stain

BRICKFORM FreestylePRO is a revolutionary concrete stain that penetrates and bonds with concrete surfaces in a way that no other coloring product can. This water-based, opaque stain is excellent for restoring, changing colors on previously colored surfaces, or rejuvenating old, discolored concrete. BRICKFORM FreestylePRO allows you to create totally new color styles for your decorative concrete work in an environmentally sound, versatile and user-friendly way.

- Water-based stain that is environmentally friendly
- Penetrating-bond with the concrete surface
- Excellent for changing colors, or rejuvenating old, discolored concrete
- No sealer required



| | | |
|---------|----------------------|--|
| FF | Solid-Color Kit |  <i>Made-to-Order</i> |
| FB-800 | 8" Applicator Brush | |
| FB-1000 | 10" Applicator Brush | |
| FB-1800 | 18" Applicator Brush | |

BRICKFORM FreestylePRO Highlighter

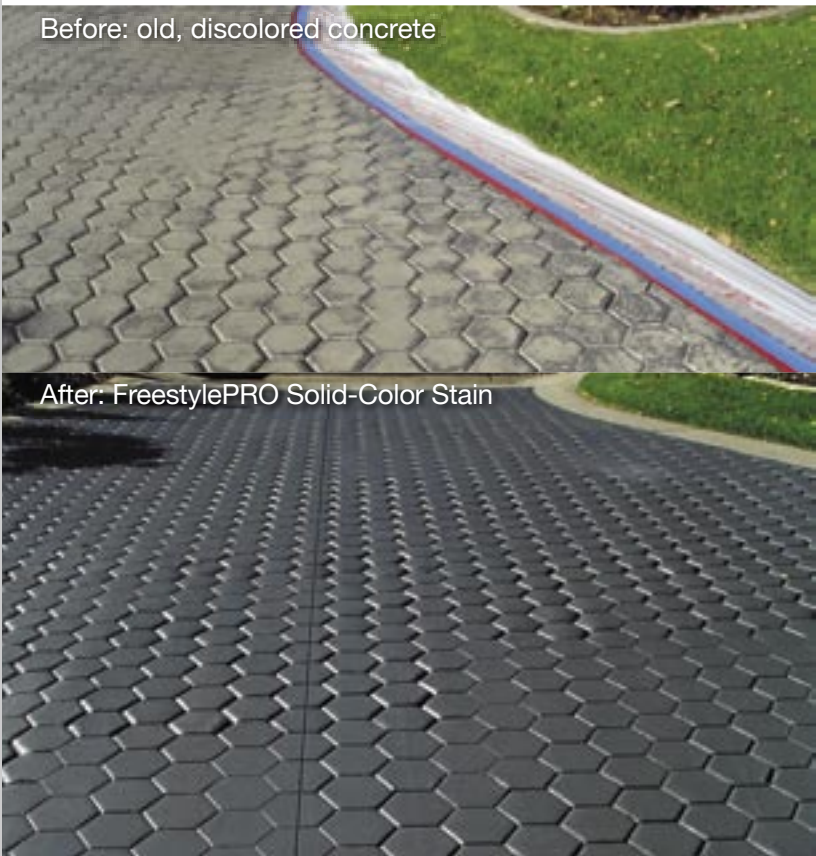
Antiquing agent for Freestyle Solid Color Stain

BRICKFORM FreestylePRO Highlighter Stains are designed for use over BRICKFORM FreestylePRO Solid-Color Stain as a contrasting color to create an antiqued look on textured concrete surfaces. BRICKFORM FreestylePRO Highlighter Kits can also be used to add contrast or additional colors to areas of relief on textured concrete or to create the look of faux finishes.

- Transparent color
- Water-based stain that is environmentally friendly
- Penetrating-bond with the concrete surface
- No sealer required



| | | |
|----|-----------------|--|
| FE | Highlighter Kit |  <i>Made-to-Order</i> |
|----|-----------------|--|



Brickform Blush-Tone Acid Stain

BRICKFORM Blush-Tone Acid Stain lets you create colors with real depth that are unique and captivating. Thousands of different looks can be achieved ranging from the understated elegance of burnished leather to the ageless beauty of natural stone. Blush-Tone Acid Stain will open the door to a whole new palette of creative expression.

BRICKFORM Blush-Tone Acid Stain

Chemical Stain For Concrete

BRICKFORM Blush-Tone Acid Stain reacts with minerals that exist in newly cured or existing concrete, penetrating the very top layer of the concrete surface with color that will not chip, crack, or peel. The colors produced in each section of concrete will be unique with captivating, multi-colored intensities that become a permanent part of the concrete. BRICKFORM Blush-Tone Acid Stain is available in 10 standard colors.



JADE
CS-100



EBONY
CS-600



TURQUOISE
CS-200



MISSION BROWN
CS-700



COFFEE
CS-300



AMBER
CS-800



CARAMEL
CS-400



OLIVE
CS-900



MAHOGANY
CS-500



WALNUT
CS-1000



- Penetrating chemical stain
- Variegated color
- Will not chip, crack, or peel
- Use on floors and walls

| | | |
|-----|--------------------|-------------------------------|
| CS | 10 Standard Colors | 1 Gallon Bottle |
| CS4 | 10 Standard Colors | Case of four 1 Gallon Bottles |

*** Neutral Clean is a cleaning and neutralizing agent engineered for use on acid and reactive stained floors prior to sealing and to remove light oil, grease or other types of soils from colored, imprinted and natural concrete surfaces. See pg 48.**

Disclaimer - When choosing colors, use the appropriate BRICKFORM color selection guide for more accurate matching. Colors shown here display only the range of BRICKFORM options available. *To confirm an exact color, have your contractor prepare a color sample for your approval before actual construction.* BRICKFORM accepts no responsibility for color matching or misprints.



Brickform E-Stain

BRICKFORM E-Stain is a water-based formulation containing reactive mineral compounds and proprietary admixtures. BRICKFORM E-Stain contains no hydrochloric acid, making it more environmentally friendly. BRICKFORM E-Stain is ideally suited for use in the Micro-Topping, SM Professional Grade, Stampable Overlay, and cast in place concrete.

BRICKFORM E-Stain

Reactive Stain For Concrete

BRICKFORM E-Stains are penetrating, reactive stains that produce unique color effects in finished cementitious surfaces that simulate the natural shadings and aged appearance of stone or masonry. The color effect produced is unique to each stained surface and cannot be duplicated with other materials. BRICKFORM E-Stain creates a chemical reaction within the concrete substrate. This reaction slightly etches the concrete surface to provide deeper and more permanent color.

The color value of the stain can be reduced by blending the stain with E-Stain Plus. Special colors can be produced by blending two or more colors together.



- Eco-friendly reactive stain
- Acid-like characteristics without the harmful acid effects
- All colors (except EBONY) do not contain Sodium Dichromate a known carcinogen
- No harmful fumes
- D.O.T. non-hazardous shipping certified stain



EVERGREEN
ES-100



SUNSET
ES-500



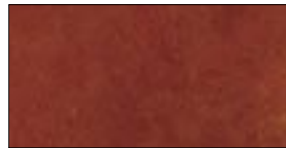
BLUE DI MARE
ES-200



EBONY
ES-600



MOSS
ES-300



SADDLE
ES-700



BRONZE
ES-400



RUSTY BROWN
ES-800

| | | |
|---------|-------------------|-------------------------------|
| ES- | 8 Standard Colors | 1 Gallon Bottle |
| ES4- | 8 Standard Colors | Case of four 1 Gallon Bottles |
| ES-1100 | E-Stain Plus | 1 Gallon Bottle |

Disclaimer - When choosing colors, use the appropriate BRICKFORM color selection guide for more accurate matching. Colors shown here display only the range of BRICKFORM options available. *To confirm an exact color, have your contractor prepare a color sample for your approval before actual construction.* BRICKFORM accepts no responsibility for color matching or misprints.



Brickform ARTesian Stain

ARTesian stains are penetrating, water-based stains that produce unique color effects in finished cementitious surfaces that simulate the natural shadings and aged appearance of stone or masonry. ARTesian Stain may be applied over smooth troweled or textured concrete, cement-based overlayers, vertical or horizontal concrete and masonry surfaces, artificial rock displays, water features and themed finishes.



TIGEREYE
AS-1600



BUTTERNUT
AS-1500



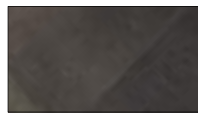
HARVEST GOLD
AS-800



CAMELBACK
AS-200



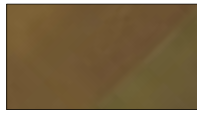
BURLAP
AS-100



EBONY
AS-600



DRIED THYME
AS-1700



OLYMPIC BRONZE
AS-500



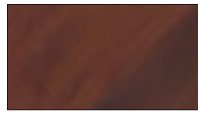
AGED WALNUT
AS-1000



SCARLET
AS-700



CHESTNUT
AS-400



CAJUN RED
AS-300



SANDBANK
AS-1200



SALMON
AS-1300



OAKMOSS
AS-1400



GREENBELT
AS-1100



CAPRI
AS-1800



DEEP SEA
AS-900

BRICKFORM ARTesian Stain

Penetrating, Water-Based Stain

The color effect produced is unique to each stained surface and cannot be duplicated with other materials. ARTesian Stain contains no acids or harmful chemicals and works as an alternative to typical reactive acid stains. There are no acids or harmful chemicals integrated in its design.



- Zero VOC
- Water-based
- Interior/exterior use
- Apply with sprayer
- Must be sealed with solvent-based sealer (i.e. Gem-Seal)

AS- 18 Standard Colors 1 Gallon Bottle

AS4- 18 Standard Colors Case of four 1 Gallon Bottles

*Top left stain applied to white Micro-Topping, bottom right applied to gray Micro-Topping.

Disclaimer - When choosing colors, use the appropriate BRICKFORM color selection guide for more accurate matching. Colors shown here display only the range of BRICKFORM options available. *To confirm an exact color, have your contractor prepare a color sample for your approval before actual construction.* BRICKFORM accepts no responsibility for color matching or misprints.



Integral Color



BRICKFORM Liquid Integral Color (Color based on 6-sack mix)

BRICKFORM Liquid Color is made from the finest UV-resistant pigments available. BRICKFORM Liquid Color is produced to a one-percent tolerance to established plant standards and also complies with ASTM C979, Pigments for Integrally Colored Concrete. BRICKFORM Liquid Color is designed to suspend and disperse the iron oxide pigments evenly. BRICKFORM Liquid Color is available in standard and designer colors. Custom colors and color matching are also available.



- Dust-free
- UV-resistant color
- Mixes evenly
- Meets ASTM C979



LC 24 Standard Colors 1 Cubic Yard

* Use Day1 as a troweling aid, densifier and curing agent. See pg 48.

* Surface Deactivator makes exposed aggregate finishes easier and more consistent. See pg 48.

BRICKFORM Color Wax

Color Wax is a wax-modified colored concrete cure and seal formulated for exterior or interior concrete surfaces. It has excellent adhesion properties and superior resistance to ultraviolet light, as well as resistance to acids, oils, mildew and alkalies while creating a non-gloss finish. Color Wax is available in all standard SOLOMON and BRICKFORM integral colors. (Color Wax is made to order, custom colors available.)

- Easy clean-up
- Water-based
- Improves color consistency
- Enrich existing color
- User-friendly



CW5-, CW1-



Disclaimer - When choosing colors, use the appropriate BRICKFORM color selection guide for more accurate matching. Colors shown here display only the range of BRICKFORM options available. *To confirm an exact color, have your contractor prepare a color sample for your approval before actual construction.* BRICKFORM accepts no responsibility for color matching or misprints.

| | | | | | | |
|---|--|--|---|--|--|---|
|  EARTHEN (PC-6001) 1 BAG PER 2 YARDS ³ |  SLATE (PC-1001) 1 BAG PER 2 YARDS ³ |  MAUVE (PC-2075) 1 BAG PER 2 YARDS ³ |  BUFF (PC-3001) 1 BAG PER 2 YARDS ³ |  SAND (PC-4005) 1 BAG PER 2 YARDS ³ |  TAN (PC-5001) 1 BAG PER YARD ³ |  DILL (PC-7001) 1 BAG PER YARD ³ |
|  RAWHIDE, 1 BAG OF EARTHEN EQUALS 1 YARD ³ OF RAWHIDE |  LIGHT GRAY, 1 BAG OF SLATE EQUALS 1 YARD ³ OF LIGHT GRAY |  GUAVA 1 BAG MAUVE EQUALS 1 YARD ³ OF GUAVA |  CHAMOIS 1 BAG BUFF EQUALS 1 YARD ³ OF CHAMOIS |  DESERT SAND, 1 BAG SAND YARD EQUALS 1 YARD ³ OF DARK SAND |  SIENNA 2 BAGS OF TAN EQUALS 1 YARD ³ OF SIENNA |  HOUSEPLANT GREEN 2 BAGS OF DILL EQUALS 1 YARD ³ OF HOUSEPLANT GREEN |
|  BUCKSKIN, 2 BAGS OF EARTHEN EQUALS 1 YARD ³ OF BUCKSKIN |  SHALE, 2 BAGS OF SLATE EQUALS 1 YARD ³ OF SHALE |  CLARET 2 BAGS OF MAUVE EQUALS 1 YARD ³ OF CLARET |  HARVEST GOLD 2 BAGS OF BUFF EQUALS 1 YARD ³ OF HARVEST GOLD |  PINE CONE 2 BAGS OF SAND EQUALS 1 YARD ³ OF PINECONE |  SALMON 3 BAGS OF TAN EQUALS 1 YARD ³ OF SALMON | |
|  LEATHER, 3 BAGS OF EARTHEN EQUALS 1 YARD ³ OF LEATHER |  STORM GRAY 3 BAGS OF SLATE EQUALS 1 YARD ³ OF STORM GRAY |  CAYENNE 3 BAGS OF MAUVE EQUALS 1 YARD ³ OF CAYENNE |  GOLDENROD 3 BAGS OF BUFF EQUALS 1 YARD ³ OF GOLDENROD |  MOROCCAN TAN 3 BAGS OF SAND EQUALS 1 YARD ³ OF MOROCCAN TAN | | |

BRICKFORM Powdered Integral Color

BRICKFORM Powdered Color is a powdered-based pigment designed to color the cement paste in a concrete mixture. Powdered Color can be used for cast-in-place, pre-cast, and tilt-up, concrete block, pavers, and textured concrete. BRICKFORM Powdered Color is available in 19 standard colors. BRICKFORM Powdered Color is pre-packaged in a two-part system designed to reduce leaks and spills.

* High volume orders may require bulk packaging

- Dissolvable interior plastic bag
- UV-resistant
- Mixes evenly
- Meets ASTM C979

* *Use Day1 as a troweling aid, densifier and curing agent. See pg 48.*

* *Surface Deactivator makes exposed aggregate finishes easier and more consistent. See pg 48.*



Premium pricing applies to green Powdered Integral Colors.

PC 25 Standard Colors 1 Bag



Pro-Dye Standard Colors

Swatches shown here represent Pro-Dye applied to white Micro-Topping (left) and gray concrete (right).



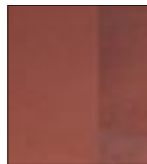
JADE
DSL-110



TURQUOISE
DSL-210



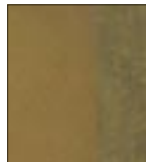
EGGPLANT
DSL-5210



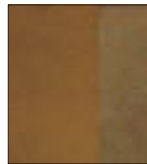
SEPIA
DSL-5010



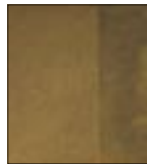
DEEP CARAMEL
DSL-2510



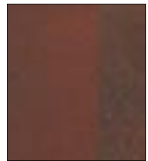
SAND
DSL-2710



COFFEE
DSL-310



CARAMEL
DSL-410



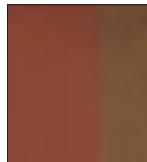
MAHOGANY
DSL-510



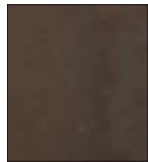
EBONY
DSL-610



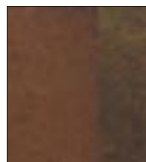
TERRA COTTA
DSL-3010



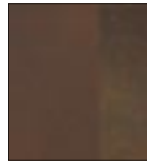
BURNT SIENNA
DSL-4210



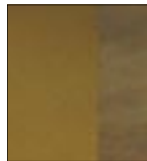
CHOCOLATE BROWN,
DSL-3510



SADDLE BROWN
DSL-3710



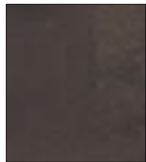
MISSION BROWN
DSL-710



AMBER
DSL-810



OLIVE
DSL-910



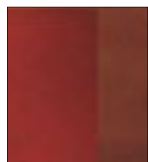
WALNUT
DSL-1010



DEEP WALNUT
DSL-4010



BLACK
DSL-7210



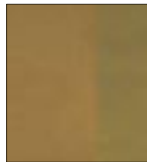
CHESTNUT
DSL-4510



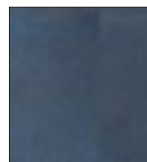
FOREST GREEN
DSL-6710



GOLD
DSL-2010



RAW SIENNA
DSL-2210



PATRIOT BLUE
DSL-5510



MIDNIGHT BLACK
DSL-7010

Polishing Systems

The Professional Concrete Polishing System is a simple, cost effective and environmentally friendly line of products designed to enhance, protect and beautify existing concrete floors with concrete polishing.

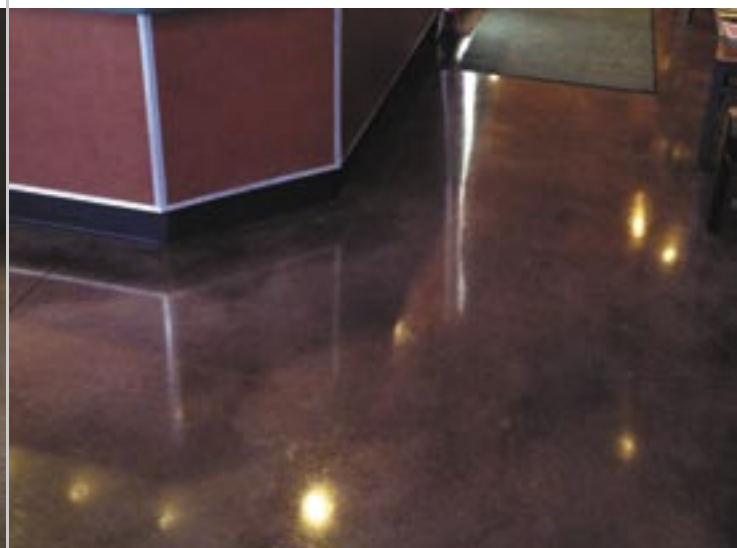
Brickform Pro-Dye Penetrating Stain For Concrete

BRICKFORM Pro-Dye has been reformulated in liquid form and is now easier to use than before. Pro-Dye is available in the same 26 standard colors and produces the same beautiful results. Pro-Dye penetrates the surface of concrete, creating a layer of translucent color that dries quickly and will not chip, crack, or peel. Pro-Dye is packaged in liquid form to be mixed in proportion with acetone. Pro-Dye is designed to work with the *Professional Concrete Polishing System* for the coloring process in polishing floors. Pro-Dye is also excellent in vertical applications, stencils, and logos because it dries so quickly. Pro-Dye colors are vivid with unique multi-colored intensities, similar to the mottling effect of acid stain. Colors can be combined to create an unlimited number of color variations.



- Interior use only
- Easy to spray apply
- Dries quickly
- Use any spray-on sealer

Disclaimer - When choosing colors, use the appropriate BRICKFORM color selection guide for more accurate matching. Colors shown here display only the range of BRICKFORM options available. To confirm an exact color, have your contractor prepare a color sample for your approval before actual construction. BRICKFORM accepts no responsibility for color matching or misprints.





| | |
|------------------|--|
| DSL- | Pro Dye - 26 Standard Colors, Bottle |
| DS-8000 | Mottling and Penetrating Agent, Bottle |
| DS-8350 | 3.5 Acetone Sprayer, Box |
| DS-8500 | Tip Kit with Check Valve, Kit |
| LY-2001 | Lythic Densifier, 1 Gallon |
| * LY4-2001 | Lythic Densifier, 1 Case of 4 |
| LY-2005 | Lythic Densifier, 5 Gallon |
| LY-3001 | Lythic XL Densifier, 1 Gallon |
| * LY4-3001 | Lythic XL Densifier, 1 Case of 4 |
| LY-3005 | Lythic XL Densifier, 5 Gallon |
| LY-4001 | Lythic Protector, 1 Gallon |
| * LY4-4001 | Lythic Protector, 1 Case of 4 |
| LY-4005 | Lythic Protector, 5 Gallon |
| LY-5001 | Lythic Cleaner, 1 Gallon |
| * LY4-5001 | Lythic Cleaner, 1 Case of 4 |
| LY-5005 | Lythic Cleaner, 5 Gallon |
| LY-6000 | Lythic SPD Protector (2 part), Kit |

Lythic Densifier & XL Colloidal Silica Technology

Lythic Densifier with reactive colloidal silica is 99.5% pure silica, suspended through a proprietary “green” manufacturing process in an ultra-low surface tension liquid. It reacts with concrete to increase surface density, making it less permeable to liquids and improving impact and abrasion resistance. Lythic’s nano-sized silica particles not only react with lime, but also bond directly to silica already in the concrete. Reactive colloidal silica bonds to and hardens decorative cementitious overlays that are low-lime and do not react well with sodium, lithium or potassium silicates.

Lythic XL is a larger particle-size version of Lythic Densifier, designed for fast build-up for burnishing, and to repair soft slab surfaces.

- Low viscosity for spray application
- No surface residue, no scrub-off
- No whitening when dry
- No hazardous waste removal
- Quick reaction time (30-60 min)
- Saves time and labor during application
- Prevents dusting, increases durability
- Will not contribute to Alkali-Silica-Reaction (ASR)
- Safer pH level (9.5-10pH)
- Concentrate formula



Lythic Protector

Colloidal Silica Technology

Lythic Protector improves on the effectiveness offered by traditional stain protectors by bonding additional silica to the concrete, further toughening it. Lythic Protector enhances color and creates depth of shine. It cures for foot traffic within 24 hours and improves traction of polished surfaces. Lythic Protector also contains lithium to extend water repellency and stain resistance.

- Extends stain resistance
- Enhances color
- Provides durable traffic-wear resistance
- Improves traction
- Works well burnished or not
- Simplifies maintenance
- Multiple applications over prolonged periods



Lythic SPD Protector

Colloidal Silica Technology

Lythic SPD Protector utilizes new protection technology that achieves resistance equal to epoxy coatings against stains, acid etching, and liquid penetration, while remaining breathable. SPD (Silica-Polymer-Dispersion) is a two-part polymer combined with nano-sized colloidal silica. SPD bonds directly to the concrete, enhancing color, and providing significantly greater protection and longer service life than conventional stain protectors.

- High performance coating
- Advanced stain protection
- Elevated chemical resistance
- Durable traffic-wear resistance
- Improves traction
- Dries clear
- Enhances color
- Will not yellow over time
- Bonds to highly polished concrete
- Designed for high speed burnishing
- Simplifies future maintenance



Lythic Cleaner

Colloidal Silica Technology

Cleaning a concrete floor does more than simply maintain appearance and hygiene; it is vital to the continued performance of the finish. Dirt and grit must be removed so they don't become abrasives that compromise the stain protection layer. Lythic Cleaner goes beyond cleansing; it adds silica to the surface as it cleans. Reactive colloidal silica bonds to concrete, so every cleaning improves resistance to abrasion and liquid penetration. It is chemically matched to Lythic's stain protection products for complete compatibility. Sold as a concentrate, mild but effective, ideally suited for everyday use, it is the best investment you can make in maintaining a concrete floor finish.



Resurfacing Products

Brickform resurfacing products quickly rejuvenate concrete surfaces without disruption or high cost.

BRICKFORM Stampable Overlay Concrete Overlay

BRICKFORM Stampable Overlay "White" is a single component (add water only) blend of white cement and special materials that forms a thin, concrete coating. BRICKFORM Stampable Overlay is specially designed to work with BRICKFORM Overlay Liquid Colorant. BRICKFORM Stampable Overlay is easy to install and forms a tough, durable topping that will withstand years of wear. When used on properly prepared surfaces, BRICKFORM Stampable Overlay will permanently bond to concrete surfaces.

- Creates a new 1/4" to 1/2" surface
- Use with overlay liquid colorant
- Durable
- Use with Triple Seven Bond Coat



SC-60 60 lb. bag (White Mix)

For use with Overlay Liquid Colorant and Liquid Release only

BRICKFORM Triple Seven Bond Coat

Primer for Cementitious Overlays

BRICKFORM Triple Seven Bond Coat prevents the concrete from absorbing water from the overlay material making it easier to spread and achieve a smooth surface. Triple Seven Bond Coat is a reactive primer, remaining active for at least two hours after it is applied. Triple Seven Bond Coat increases the bond strength by creating a more efficient chemical link between the concrete and the overlay.

- "Reactive primer"
- Easy application
- Enhances bonding to concrete

BC-007 5 Gallon
BC-0071 1 Gallon
BC4-0071 Case of four 1 Gallon units



BRICKFORM Stampable Overlay "Gray" is a premixed blend of special materials that, when mixed with water, forms a thin, concrete coating. This overlay is intended for use with Color Hardener and Antique Release.

- Creates a new 1/4" to 1/2" surface
- Can be textured & colored
- Durable
- Use with Triple Seven Bond Coat

OL-60 5 Gallon Bucket (Gray Mix)
For use with Color Hardener and Antique Release only



BRICKFORM Micro-Topping

Smooth Grade

BRICKFORM Micro-Topping is used on interior or exterior cured concrete to create a durable surface that can be colored or stained. It is available as a white or gray dry powder in Smooth grade, and mixed with Brickform Liquid Polymer. The Smooth Grade is applied over SM Professional Grade for a smooth finish when desired. The mixed materials form a thin concrete coating that can be used to restore or repair any concrete surface.

- Creates a new surface
- Can be colored & stained



| | | |
|------------|----------------|-----------------|
| MT-1500 SG | Gray Smooth | 40 Lb. Bag |
| MT-2500 SG | White Smooth | 40 Lb. Bag |
| MT-3000 | Liquid Polymer | 5 Gallon Bucket |
| MT-KIT | Sample Kit | |

Overlay Liquid Colorant

Specifically designed for Brickform Micro-Topping, SM Professional Grade and Stampable Overlay (SC-60, White Mix). Use one bottle per bag.

Available in 39 standard colors.

(See color chart on pages 30-31)

Six per case, cannot break cases.

*Overlay Liquid Colorant not available in Smokey Blue.



| | |
|------|---------------|
| MTC- | 10 Oz. Bottle |
|------|---------------|

SM Professional Grade™

Rough Grade Micro-Topping
Sprayable Cementitious Overlay

BRICKFORM SM Professional Grade is a white, sprayable cementitious overlay that is designed to be mixed with Brickform Liquid Polymer and applied with a hopper gun. It can be integrally colored using BRICKFORM Overlay Liquid Colorant. BRICKFORM SM Professional Grade can be used to create the look of brick, stone, tile or other unique specialty finishes.

- Ease of use
- Can be integrally colored
- Can be stained
- Spray or trowel
- Water resistant



TIP: Use design tape to create patterns that mimic stone, tile or slate. See page 26 for details.

| | | |
|---------|----------------|-----------------|
| MT-4000 | 60 Lb. Bag | |
| MT-3000 | Liquid Polymer | 5 Gallon Bucket |
| SM-KIT | Sample Kit | |

Turtle Set™

Brickform Turtle Set is a retardant designed for use with Brickform SM Professional Grade, Micro-Topping, OL-60 and SC-60 Stampable overlay products. Easily measured liquid form increases pot life and set times for greater control with resurfacing products in warm weather.



| | |
|-------|-------------------------------|
| TS-1 | 1 Gallon Bottle |
| TS4-1 | Case of four 1 Gallon Bottles |



Brickform Vertical Mix

High-build, vertical texturing mix

BRICKFORM Vertical Mix is a lightweight vertical overlay mix designed for texturing vertical surfaces up to 2" and creating simulated stone, rock, tile, slate and other natural surfaces. It is composed of cement, polymers, lightweight aggregates and admixtures. It may be applied to vertical surfaces such as wood, drywall, concrete, blocks etc.



- Add-water only product
- Color with Overlay Liquid colorant or stain
- Easily textured by carving and stamping

VM-1000, Vertical Mix, 45 lb. bag

Rock Fall, vm-125

27.75" x 12" (70.49 x 30.48 cm), Pattern: A, B and C



Dry Stack, vm-100

27.75" x 12" (70.49 x 30.48 cm), Pattern: A, B and C



Pebble skin, vm-1075 A or B

16" x 16" (40.64 x 40.64 cm)

Pattern: A and B

Pebble Skin Roller, vm-1075, 8.5"



Rough Stone skin, vm-1025 A or B

16" x 16" (40.64 x 40.64 cm)

Pattern: A and B

Rough Stone Skin Roller, vm-1075, 8.5"



Intensity skin, vm-1050 A or B

16" x 16" (40.64 x 40.64 cm)

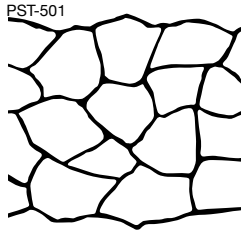
Pattern: A and B

Intensity Skin Roller, vm-1075, 8.5"

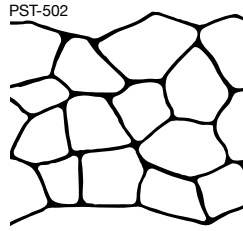


Paper Stencils

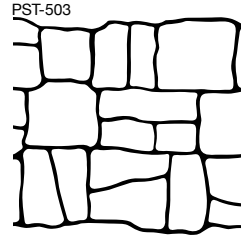
Brickform paper stencils are made of thick, tear-resistant paper and come in a wide variety of popular patterns including stone, pavers, tile, cobblestone, and brick.



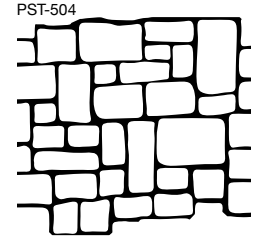
PST-501 BUSHROCK
AVERAGE STONE SIZE: 16" X 10"
ROLL WIDTH: 36" JOINT WIDTH: 1/2"



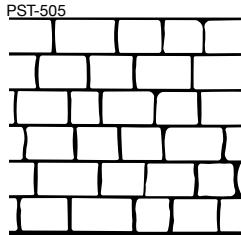
PST-502 FLAGSTONE
LARGEST STONE SIZE: 14" X 11"
ROLL WIDTH: 32" JOINT WIDTH: 1/2" - 1 1/4"



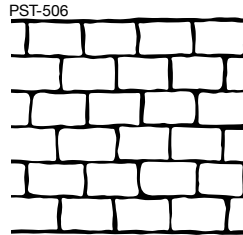
PST-503 LARGE KEYSTONE
LARGEST STONE SIZE: 12" X 10"
ROLL WIDTH: 35" JOINT WIDTH: 1/2" - 1"



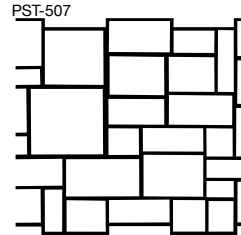
PST-504 RUSTIC ASHLAR
LARGEST STONE SIZE: 12" X 10"
ROLL WIDTH: 35" JOINT WIDTH: 1/2" - 1"



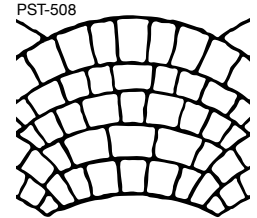
PST-505 ROMAN PAVER
AVERAGE BRICK SIZE: 10" X 5 1/2"
ROLL WIDTH: 34" JOINT WIDTH: 1/2"



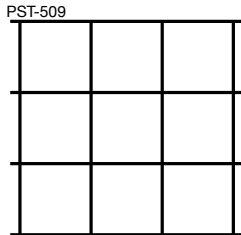
PST-506 COBBLEBRICK
AVERAGE BRICK SIZE: 5 1/2" X 8 1/2"
ROLL WIDTH: 37" JOINT WIDTH: 1/2" - 3/4"



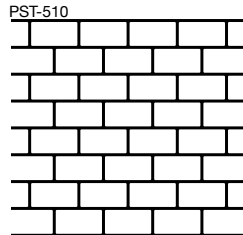
PST-507 ASHLAR TILE
LARGEST TILE SIZE: 12 1/2" X 11 1/2"
ROLL WIDTH: 37" JOINT WIDTH: 1/2" - 1"



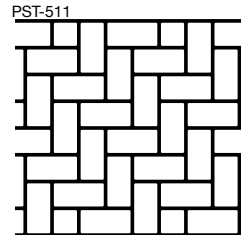
PST-508 COBBLE FAN
BRICK SIZE: RANDOM
ROLL WIDTH: 34" JOINT WIDTH: 1/2" - 3/4"



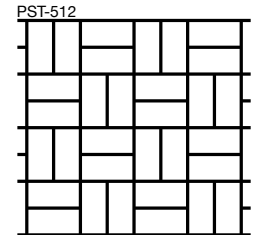
PST-509 LARGE TILE
TILE SIZE: 10 1/2" X 10 1/2"
ROLL WIDTH: 33 1/2" JOINT WIDTH: 1/2"



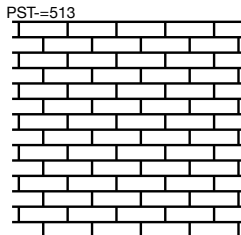
PST-510 RUNNING BOND
BRICK SIZE: 4" X 7 3/4"
ROLL WIDTH: 36 1/2" JOINT WIDTH: 1/2"



PST-511 ORIGINAL HERRINGBONE
BRICK SIZE: 3 1/2" X 7 1/2"
ROLL WIDTH: 33 1/2" JOINT WIDTH: 1/2"



PST-512 BASKET WEAVE
BRICK SIZE: 3 1/2" X 7 1/2"
ROLL WIDTH: 33 1/2" JOINT WIDTH: 1/2"



PST-513 FACE BRICK
BRICK SIZE: 2 3/8" X 7 7/8"
ROLL WIDTH: 36 7/8" JOINT WIDTH: 7/16"



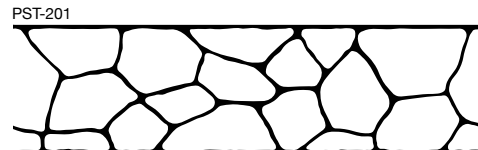
PST-301 BRICK HEADER
BRICK SIZE: 3 1/2" X 7 1/2"
ROLL WIDTH: 8 1/2" JOINT WIDTH: 1/2"



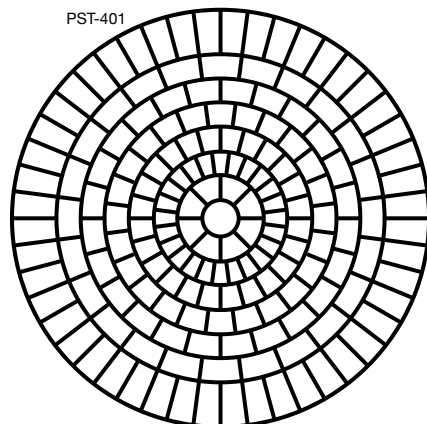
PST-303 KEYSTONE HEADER
STONE SIZE: RANDOM
ROLL WIDTH: 8 1/2" JOINT WIDTH: 1/2"



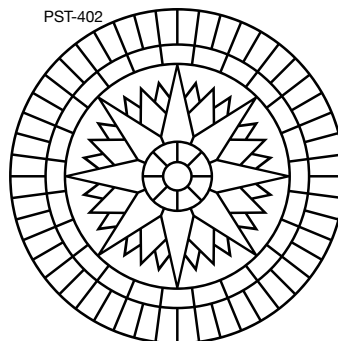
PST-302 COBBLE HEADER
BRICK SIZE: 4 3/4" X 7 1/2"
ROLL WIDTH: 8 3/4" JOINT WIDTH: 1/2"



PST-201 18-INCH FLAGSTONE BORDER
STONE SIZE: RANDOM
ROLL WIDTH: 18" JOINT WIDTH: 1/2"



PST-401 LARGE BRICK ROSETTE
DIAMETER: 7' 2"
JOINT WIDTH: 7/8"



PST-402 COMPASS
DIAMETER: 5' 5" JOINT WIDTH: 1/2"
DETACHABLE LETTERS INCLUDED (N, S, E, W)

BRICKFORM Paper Stencil patterns are available in both 500 square foot rolls and 1000 square foot rolls.

Premium Sealers

Brickform sealers bring out the natural beauty of the textures and color unique to a decorative surface. These superior, durable sealers also protect the finish from sun damage, yellowing, scuffing and premature wear.

HIGH PERFORMANCE SEALERS

UreMax WB™

BRICKFORM UreMax WB is a two-part, matte-finish, water-based polyurethane that forms a high-solids coating. UreMax WB preserves and protects any above-grade concrete, masonry or stone. It is the most durable, chemical-resistant barrier coating of the BRICKFORM sealers, without the odor typically found in solvent-borne sealers. Formulated to seal and protect concrete and masonry that is subject to heaviest use conditions, BRICKFORM UreMax WB is chemically resistant and highly durable.



Poly-Astic™

Premium, High-Build, Poly-Aspartic Sealer - Zero VOC

BRICKFORM Poly-Astic is a two-part high solids, high build sealer designed for interior use on concrete or masonry surfaces. Poly-Astic allows for single coat high film thickness in a water clear finish. Poly-Astic provides a very smooth, mirror like finish not attainable with any other product.

- Non-yellowing, crystal clear
- Interior use only
- Enhances color
- Easy to apply



DecoPoxy™

DecoPoxy is a water-based, low VOC, penetrating epoxy coating that has been specifically formulated to protect interior commercial or residential cementitious floors. It provides a high gloss, wear and chemical resistance, and an easy to maintain finish, while bringing up the full depth of color on acid stained or decorative floors.

- Helps prevent delamination
- Non-flammable, low-odor and toxicity
- Superior chemical resistance
- Easy to recoat



PENETRATING SEALERS

Stealth Seal™

BRICKFORM Stealth-Seal is non-film forming water and oil repellent that effectively protects and preserves the natural appearance of any surface it's applied on. It works by creating an invisible barrier at the surface level through a chemical reaction between the sealer and the cement paste, allowing vapor transmission while strongly repelling water and oil. Stealth-Seal ideal for any surface that needs protection from stains and the elements. Apply to natural materials, concrete and any cementitious surface.

Stealth Seal Premium™

BRICKFORM Stealth-Seal Premium will repel water and oil more effectively, has greater stain resistance and has 50% longer service life than regular Stealth Seal.



CURE & SEALS

Gem Cure & Seal™

Gem Cure & Seal is a medium-to-high gloss, solvent based, clear acrylate co-polymer curing compound, dust proofer and sealer all in one. Gem Cure & Seal minimizes moisture loss from evaporation in newly placed concrete to provide maximum strength, hardness and protection. Reducing water evaporation loss will result in a stronger, denser, more durable concrete with higher compressive strength, and better crack and freeze-thaw resistance.



Satin Cure & Seal™

Satin Cure & Seal is a water based, clear acrylic co-polymer curing compound, dust proofer and sealer all in one. Satin Cure & Seal minimizes moisture loss from evaporation in newly placed concrete to provide maximum strength, hardness and protection. Reducing water evaporation loss will result in a stronger, denser, more durable concrete with higher compressive strength, and better crack and freeze-thaw resistance.



SOLVENT-BASED SEALERS

Gem-Seal™

High-Gloss Sealer - 700, 400 or 100 VOC

BRICKFORM Gem-Seal is a high-gloss, solvent-based, non-yellowing sealer. A light coating of this UV-resistant sealer will protect and enhance colored and textured concrete. Use BRICKFORM Gem-Seal on porous concrete and masonry to form a shield against stains and mildew.

- Non-yellowing, crystal clear
- Dries to a "wet-look" finish
- Interior/exterior use
- Enhances color



Poly-Seal™

Medium to High-Sheen Sealer - 650, 400 or 100 VOC

BRICKFORM Poly-Seal is a medium-to-high sheen, solvent-based, super-tough acrylic sealer that is easy to clean and maintain. Poly-Seal protects with a UV-resistant coating that penetrates the surface to retard efflorescence and resist oil, grease and food stains.

- Non-yellowing, crystal clear
- Medium-to-high sheen finish depending porosity of surface
- Interior/exterior use



SOLVENT-BASED SEALERS cont.

Safety-Seal™

With Traction-Grip, Low-Sheen Sealer
400 VOC or 100 VOC

BRICKFORM Safety-Seal is designed to be slip-resistant and is ideal around pool decks and areas where water or moisture can accumulate. Safety-Seal is a solvent-based sealer that protects concrete surfaces from stains and mildew. BRICKFORM Safety-Seal dries to a beautiful matte finish that is UV-resistant.

- Dries to a low-sheen finish
- Interior/exterior use
- Micronized slip-resistant additives



WATER-BASED SEALER

Satin-Seal™

Satin-Finish “Natural-Look” Sealer - 100 VOC

BRICKFORM Satin-Seal is a non-flammable product, designed to protect concrete with a satin finish. This water-based acrylic VOC-compliant sealer reduces the effect of efflorescence on porous surfaces, while forming a non-yellowing, scuff-resistant finish that resists moisture penetration.

- Non-yellowing satin-finish
- Interior/exterior use
- Scuff-resistant



* NOT RECOMMENDED FOR DECORATIVE APPLICATIONS SUCH AS STAMPED, STAINED OR DYED CONCRETE. Please review the TIS at www.brickform.com for applications and guidelines.

SEALER ADDITIVES

Tinta' Seal™ Color tint pack additive for solvent-based sealers

Tinta' Seal can enhance and correct the color of existing cementitious surfaces such as integral color concrete, stamped concrete, overlays or plain concrete. The BRICKFORM Tinta' Seal tint packs are designed to be used with any of our solvent base sealers including Gem Cure & Seal. It is packaged in a 16 oz can that is mixed onsite with a 5-gallon pail of either Gem-Seal, Poly-Seal or Gem Cure & Seal.



Traction Grip™

Traction Grip is an anti-slip micronized powder that adds texture to decorative sealers (BRICKFORM Gem-Seal, Poly-Seal, and Satin Seal). The lightweight spherical shape and clarity gives Traction Grip its specific properties. Applications include inclined driveways, garages, steps, patios and pool decks.

- No sharp edges
- Disperses easily
- Does not affect color



Matte-Magic™

Gloss Reducing Additive

BRICKFORM Matte-Magic is a liquid, field-added, flattening agent additive for Brickform solvent based sealers. The original topcoat gloss is reduced based on the amount of additive used. The finished gloss reflectance can be varied from semi-gloss to satin. Matte-Magic comes in 8 oz units, each unit is added to a 5 gallon sealer for gloss reduction.

- Effectively reduces gloss
- Easy to measure and mix
- Does not affect viscosity



SEALER STRIPPER

Strip-It™

BRICKFROM Strip-It is an environmentally sound and user-safe stripper for water and solvent-based sealers and paints. Strip-It may be used on all masonry surfaces including concrete, quarry tile, ceramic tile, terrazzo, cementitious overlays and other surfaces. Strip-It meets 2005 California Air Resources Board V.O.C. standards (less than 50% V.O.C. by weight).

- Non-flammable
- Contains no methylene chloride



| | | | | | |
|--------------------|---|--------------------|----------------------------------|------------------|---|
| DECOPOXY | DecoPoxy, 1.5 Gallon Kit | MM-100..... | Matte-Magic, 8 Ounce | SR-1 | Strip-It, 1 Gallon |
| GCS1-65025 ... | Gem Cure & Seal 1315, 650 VOC, 1 Gallon | MS-5 | Safety-Seal 400 VOC, 5 Gallon | * SR4-1 | Strip-It, Case of four 1 Gallon units |
| * GCS4-65025 | Case of four 1 Gallon units | MS5-100 | Safety-Seal 100 VOC, 5 Gallon | SR-5 | Strip-It, 5 Gallon |
| GCS-65025 | Gem Cure & Seal 1315, 650 VOC, 5 Gallon | PA-1..... | Poly-Astic, 2 Gallon Kit | SS-5 | Satin-Seal, 5 Gallon Bucket |
| GCS1-35025 ... | Gem Cure & Seal 1315, 350 VOC, 1 Gallon | PA-25..... | Poly-Astic, 2 Quart Kit | ST-1 | Stealth-Seal, 1 Gallon |
| * GCS4-35025 | Case of four 1 Gallon units | PS-1 | Poly-Seal 650 VOC, 1 Gallon | * ST4-1 | Stealth-Seal, Case of four 1 Gallon units |
| GCS-35025 | Gem Cure & Seal 1315, 350 VOC, 5 Gallon | * PS4-650 | Case of four 1 Gallon units | ST-5 | Stealth-Seal, 5 Gallon |
| GCS1-35018 | Gem Cure & Seal 309, 350 VOC, 1 Gallon | PS-5 | Poly-Seal 100 VOC, 1 Gallon | STP-1 | Stealth-Seal Premium, 1 Gallon |
| * GCS4-35018 | Case of four 1 Gallon units | PS1-400 | Poly-Seal 400 VOC, 1 Gallon | * STP4-1 | Case of four 1 Gallon units |
| GCS-35018 | Gem Cure & Seal 309, 350 VOC, 5 Gallon | * PS4-400 | Case of four 1 Gallon units | STP-5 | Stealth-Seal Premium, 5 Gallon |
| GCS1-10018 | Gem Cure & Seal 309, 100 VOC, 1 Gallon | PS5-400 | Poly-Seal 400 VOC, 5 Gallon | TAS-(color)..... | Tinta' Seal, 16 Ounce |
| * GCS4-10018 | Case of four 1 Gallon units | PS1-100 | Poly-Seal 100 VOC, 1 Gallon | TG..... | Traction Grip, 1 lb. Jar |
| GCS-10018 | Gem Cure & Seal 309, 100 VOC, 5 Gallon | * PS4-100 | Case of four 1 Gallon units | * TG | Traction Grip, Case of eight 1 lb. Jars |
| GS1-700 | Gem-Seal 700 VOC, 1 Gallon | PS5-100 | Poly-Seal 100 VOC, 5 Gallon | UMS-1 | UreMax, 1 Gallon Kit |
| * GS4-700 | Case of four 1 Gallon units | SCS1-10018 | Satin Cure & Seal 309, 1 Gallon | UMS-4..... | UreMax, 4 Gallon Kit |
| GS5-700 | Gem-Seal 700 VOC, 5 Gallon | * SCS4-10018 | Case of four 1 Gallon units | | |
| GS-1 | Gem-Seal 400 VOC, 1 Gallon | SCS-10018 | Satin Cure & Seal 309, 5 Gallon | | |
| * GS4-400 | Case of four 1 Gallon units | SCS1-10025 | Satin Cure & Seal 1315, 1 Gallon | | |
| GS-5 | Gem-Seal 400 VOC, 5 Gallon | * SCS4-10025 | Case of four 1 Gallon units | | |
| GS1-100..... | Gem-Seal 100 VOC, 1 Gallon | SCS-10025 | Satin Cure & Seal 1315, 5 Gallon | | |
| * GS4-100 | Case of four 5 Gallon units | | | | |
| GS5-100..... | Gem-Seal 100 VOC, 5 Gallon | | | | |

Sealer Properties Checklist

| | UreMax WB | Poly-Astic | DecoPoxy | Stealth-Seal | Stealth-Seal Premium | Gem Cure & Seal | Satin Cure & Seal | Gem-Seal | Poly-Seal | Safety-Seal | Satin-Seal |
|---------------------------|-----------|------------|----------|--------------|----------------------|-----------------|-------------------|-------------|-------------|-------------|------------|
| High performance | ✓ | ✓ | ✓ | | ✓ | | | | | | |
| Penetrating/ Impregnating | | | | ✓ | ✓ | | | | | | |
| Cure and seal | | | | | | ✓ | ✓ | | | | |
| Solvent-based | | ✓ | | | | ✓ | | ✓ | ✓ | ✓ | |
| Water-based | ✓ | | ✓ | ✓ | ✓ | | ✓ | | | | ✓ |
| Use with Matte-Magic | | | | | | ✓ | | ✓ | ✓ | n/a | |
| Two-part | ✓ | ✓ | ✓ | | | | | | | | |
| VOC in grams/ liter | <50 | 0 | 190 | <20 | <20 | 100/350/650 | <100 | 100/400/700 | 100/400/650 | 100/400 | 100 |
| Solids Content % | 51 | 65 | 35 | n/a | n/a | 19-25 | 18-25 | 19-27 | 19 | 19 | 26 |
| High-sheen | | ✓ | ✓ | n/a | n/a | | | ✓ | | | |
| Medium-sheen | | | | | | ✓ | | | ✓ | | |
| Low-sheen | ✓ | | | flat | flat | | ✓ | | | ✓ | ✓ |
| Satin-Sheen | ✓ | | | n/a | n/a | | | | | | ✓ |
| Film-forming | ✓ | ✓ | ✓ | | | ✓ | ✓ | ✓ | ✓ | ✓ | ✓ |
| Non film-forming | n/a | n/a | n/a | penetrating | penetrating | n/a | n/a | n/a | n/a | n/a | n/a |
| Flammable | | ✓ | | | | ✓ | | ✓ | ✓ | ✓ | |
| Roll-on | ✓ | ✓ | ✓ | ✓ | ✓ | ✓ | ✓ | ✓ | ✓ | | ✓ |
| Spray-on | ✓* | | ✓ | ✓ | ✓ | preferred | ✓ | preferred | preferred | preferred | ✓ |
| Interior | ✓ | ✓ | ✓ | ✓ | ✓ | ✓ | ✓ | ✓ | ✓ | ✓ | ✓ |
| Exterior | ✓ | ✓ | | ✓ | ✓ | ✓ | ✓ | ✓ | ✓ | ✓ | ✓ |

* Not a preferred method but possible with proper personal protection



Finishing Aids

Liquid Release

Colorless Bond-Breaker For Stamping

BRICKFORM Liquid Release is a colorless bond-breaker, formulated and recommended for use with all BRICKFORM Texture Mats and with many other architectural concrete texturing systems. BRICKFORM Liquid Release forms a lubricating barrier that prolongs the life of the imprinting tools by decreasing the friction between the mats and the concrete.

- Prevents mats sticking to concrete
- Easy-to-apply liquid
- Prolongs tool life
- Interior/exterior use
- Apply with sprayer

| | |
|-------|----------------------------|
| LR-1 | 1 Gallon Can |
| LR4-1 | Case of four 1 Gallon Cans |
| LR-5 | 5 Gallon Can |



Neutra Clean™

BRICKFORM pH neutral cleaner is a cleaning and neutralizing agent engineered for use on acid and reactive stained floors prior to sealing and to remove light oil, grease or other types of soils from colored, imprinted and natural concrete surfaces. This product combines cleaning and light degreasing without the use of petroleum solvents and effectively loosens residues from the staining process as well as loosening release powders from stamped concrete.

| | |
|-------|-------------------------------|
| NC-1 | 1 Gallon Bottle |
| NC4-1 | Case of four 1 Gallon Bottles |



Lythic DAY1

Colloidal Silica Technology

Lythic DAY1 Troweling Aid, Densifier and Curing Agent is a colloidal silica-based topical additive that makes concrete flatwork finishing easier and faster, and produces a better result. Applied during floating and troweling, Lythic DAY1 lubricates the surface for easier, faster finishing, increases cream for a better finish, significantly extends workability time under adverse conditions, slows surface drying and premature set, and eliminates the need for adding water during finishing.

| | | |
|-----------|--------------|-------------|
| LY-1001 | Lythic Day 1 | 1 Gallon |
| * LY-1001 | Lythic Day 1 | 1 Case of 4 |
| LY-1005 | Lythic Day 1 | 5 Gallon |



Surface Deactivator

Surface Deactivator by Solomon Colors makes exposed aggregate finishes easier and more consistent. It is topically applied to freshly-placed concrete to prevent cement paste hardening and achieve more controlled exposed aggregate finishes. Unlike sugar-based retarders with uncertain levels of retardation, Surface Deactivator selectively halts the hydration process down to a controlled depth. Ten predetermined depths of exposure are available, color-coded for identification, to provide consistent, repeatable cement paste removal and aggregate reveal.

Surface Deactivator can be applied to newly-placed concrete that is specified for diamond polishing. It softens surface cement paste, reducing heavy grinding stages up to 75%.

| | |
|-----------|--|
| SSD02-1 | Acid Etch Purple 0.2 mm, 1 gal |
| * SSD02-4 | Acid Etch Purple 0.2 mm, 1 case of 4 |
| SSD02-5 | Acid Etch Purple 0.2 mm, 5 gal |
| SSD05-1 | Light Sandblast Blue 0.5 mm, 1 gal |
| * SSD05-4 | Light Sandblast Blue 0.5 mm, 1 case of 4 |
| SSD05-5 | Light Sandblast Blue 0.5 mm, 5 gal |
| SSD10-1 | Medium Sandblast Brown 1 mm, 1 gal |
| * SSD10-4 | Medium Sandblast Brown 1 mm, 1 case of 4 |
| SSD10-5 | Medium Sandblast Brown 1 mm, 5 gal |
| SSD20-1 | Heavy Sandblast Green 2 mm, 1 gal |
| * SSD20-4 | Heavy Sandblast Green 2 mm, 1 case of 4 |
| SSD20-5 | Heavy Sandblast Green 2 mm, 5 gal |
| SSD25-1 | Exposure Yellow 2.5 mm, 1 gal |
| * SSD25-4 | Exposure Yellow 2.5 mm, 1 case of 4 |
| SSD25-5 | Exposure Yellow 2.5 mm, 5 gal |
| SSD30-1 | Exposure Red 3 mm, 1 gal |
| * SSD30-4 | Exposure Red 3 mm, 1 case of 4 |
| SSD30-5 | Exposure Red 3 mm, 5 gal |
| SSD40-1 | Exposure Gray 4 mm, 1 gal |
| * SSD40-4 | Exposure Gray 4 mm, 1 case of 4 |
| SSD40-5 | Exposure Gray 4 mm, 5 gal |
| SSD50-1 | Exposure Mustard 5 mm, 1 gal |
| * SSD50-4 | Exposure Mustard 5 mm, 1 case of 4 |
| SSD50-5 | Exposure Mustard 5 mm, 5 gal |
| SSD55-1 | Exposure White 5.5 mm, 1 gal |
| * SSD55-4 | Exposure White 5.5 mm, 1 case of 4 |
| SSD55-5 | Exposure White 5.5 mm, 5 gal |
| SSD65-1 | Exposure Orange 6.5 mm, 1 gal |
| * SSD65-4 | Exposure Orange 6.5 mm, 1 case of 4 |
| SSD65-5 | Exposure Orange 6.5 mm, 5 gal |

BRICKFORM Dura-Wax

Premium Acrylic Floor Wax

BRICKFORM Dura-Wax is an acrylic wax that forms a long-lasting protective coating over a BRICKFORM sealer. Dura-Wax provides wear-resistant sacrificial coating. Dura-Wax stands up to the heaviest of traffic conditions. It is easily applied and can be re-coated up to 100 times without having to strip the floor. It will not powder and it can be mopped or cleaned time after time without damaging its original shine. BRICKFORM Dura-Wax is ideal for ongoing maintenance.

- Super-tough film
- Semi-gloss
- Interior use only
- Slip-resistant

| | |
|----------|-------------------------------|
| DW-1000 | 1 Gallon Bottle |
| DW4-1000 | Case of four 1 Gallon Bottles |
| DW-5000 | 5 Gallon Bucket |



E-Etch

BRICKFORM E-Etch is an environmentally friendly industrial strength floor cleaner, degreaser and light etching product. It is ideal for cleaning and preparing cementitious surfaces for acid staining, decorative overlays, water-based stains, and coatings applications. It may also be used on concrete, stucco, terrazzo and most masonry surfaces to open up the pores on the surface and clean grime, dirt, grease, scuff marks and stains. E-Etch effectively removes excess Antique Release from textured concrete and can also be used as an efflorescence remover.

- Biodegradable
- Rinse with water
- Non-hazardous
- Non-abrasive
- Non-carcinogenic
- Antique Release/efflorescence remover

| | |
|----------|-------------------------------|
| ES-1200 | 1 Gallon Bottle |
| ES4-1200 | Case of four 1 Gallon Bottles |





Stamped Concrete

Systems

Coloring

Liquid or Powdered Integral Colors, meeting ASTM C979 standards. Integral colors are designed to color the cement paste in a concrete mixture.

Color Hardener produces clear, sharp impressions that enhance the finished appearance of any hardscape.

Antique Release and Antique-It impart a second color to create antiqued and textured concrete surfaces.

Liquid Release is a colorless bondbreaker, formulated and recommended for use with all texture mats

Aids

Lythic DAY1 Troweling Aid, Densifier and Curing Agent is a colloidal silica-based topical additive that makes concrete flatwork finishing easier and faster, and produces a better result.

Stamping

Texture mats and skins

Texturing accessories including pounders, touch-up wheels, grouting tools and chisels

Cleaning: E-Etch concrete degreaser and etching agent

Cure and Seals

Gem Cure & Seal 1315, 350 or 650 VOC is a solvent-based, clear acrylate co-polymer curing compound, dust proofer and sealer. (Also Gem Cure & Seal 309, 100 or 350 VOC.)

Satin Cure & Seal 1315 (also 309) is a water-based, clear acrylic co-polymer curing compound, dust proofer and sealer.

Sealers

Poly-Seal is a medium-to-high sheen, solvent-based, super-tough acrylic sealer that is easy to clean and maintain.

Gem-Seal is a high-gloss, solvent-based, non-yellowing sealer.

Safety-Seal is a matte-finish, solvent-based sealer designed to be slip-resistant and is ideal around pool decks and areas where water or moisture can accumulate.

Stealth-Seal is non-film forming water and oil repellent that effectively protects and preserves the natural appearance of any surface it's applied on.

Interior Use Sealers

DecoPoxy is a high-gloss, water-based, low VOC, penetrating epoxy coating that has been specifically formulated to protect interior commercial or residential cementitious floors.

UreMax WB is a two-part, matte-finish, water-based polyurethane that forms a durable, high-solids coating.

Poly-Astic (interior use) is a two-part, high solids, high build sealer designed for use on concrete or masonry surfaces.

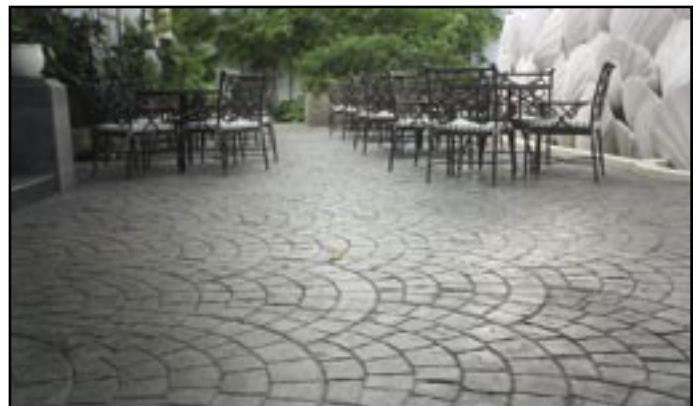
Dura-Wax (interior use only) is an acrylic wax that forms a long-lasting protective coating over a Brickform sealer.

Maintenance

E-Etch is a biodegradable concrete cleaner perfect for the removal of excess Antique Release or for the removal of efflorescence.

Dura-Wax.

REFER TO TECHNICAL DATA SHEETS PRIOR TO APPLICATION.



Integral Color *Systems*

Coloring

Liquid or Powdered Integral Colors, meeting ASTM C979 standards. Integral colors are designed to color the cement paste in a concrete mixture.

Liquid Release is a colorless bondbreaker, formulated and recommended for use with all texture mats

Aids

Lythic DAY1 Troweling Aid, Densifier and Curing Agent is a colloidal silica-based topical additive that makes concrete flatwork finishing easier and faster, and produces a better result.

Cleaning: E-Etch concrete degreaser and light etching agent

Surface Deactivator applied to freshly-placed concrete prevents cement paste hardening and achieve more controlled exposed aggregate finishes.

Cure and Seals

Gem Cure & Seal 1315, 350 or 650 VOC is a solvent-based, clear acrylate co-polymer curing compound, dust proofer and sealer. (Also Gem Cure & Seal 309, 100 or 350 VOC.)

Satin Cure & Seal 1315 (also 309) is a water-based, clear acrylic co-polymer curing compound, dust proofer and sealer.

Sealers

Poly-Seal is a medium-to-high sheen, solvent-based, super-tough acrylic sealer that is easy to clean and maintain.

Gem-Seal is a high-gloss, solvent-based, non-yellowing sealer.

Safety-Seal is a matte-finish, solvent-based sealer designed to be slip-resistant and is ideal around pool decks and areas where water or moisture can accumulate.

Stealth-Seal is non-film forming water and oil repellent that effectively protects and preserves the natural appearance of any surface it's applied on.

Interior Use Sealers

DecoPoxy is a high-gloss, water-based, low VOC, penetrating epoxy coating that has been specifically formulated to protect interior commercial or residential cementitious floors.

UreMax WB is a two-part, matte-finish, water-based polyurethane that forms a durable, high-solids coating.

Poly-Astic (interior use) is a two-part, high solids, high build sealer designed for use on concrete or masonry surfaces.

Satin-Seal is a water-based acrylic VOC-compliant sealer that reduces the effect of efflorescence on porous surfaces, while forming a non-yellowing, scuff-resistant finish that resists moisture penetration.

Dura-Wax (interior use only) is an acrylic wax that forms a long-lasting protective coating over a Brickform sealer.

Maintenance

Dura-Wax (interior use only) is an acrylic wax that forms a long-lasting protective coating over a Brickform sealer.

E-Etch is an environmentally friendly industrial strength floor cleaner, degreaser and light etching product.

REFER TO TECHNICAL DATA SHEETS PRIOR TO APPLICATION.



Restoration *Systems*



Coloring

Cem-Coat is a high-quality, self-priming cementitious coating. For use on interior or exterior concrete surfaces. Restore stamped concrete projects with a solid color (needs to be sealed). Antique with water soluble Antique-It.

FreestylePRO is an ultra-low VOC, water-based, penetrating, polymer modified concrete stain. It is designed to rejuvenate cured concrete and overlay surfaces providing a solid color that requires no sealer. FreestylePRO Highlighter is a transparent stain and will provide an antiqued look.

Application Tools for FreestylePRO:

Applicator brushes available in 8", 10" or 18" widths.

Sealers

Poly-Seal is a medium-to-high sheen, solvent-based, super-tough acrylic sealer that is easy to clean and maintain.

Gem-Seal is a high-gloss, solvent-based, non-yellowing sealer.

Safety-Seal is a matte-finish, solvent-based sealer designed to be slip-resistant and is ideal around pool decks and areas where water or moisture can accumulate.

Stealth-Seal is non-film forming water and oil repellent that effectively protects and preserves the natural appearance of any surface it's applied on. (Cem-Coat only).

Interior Use Sealers for use with Cem-Coat

DecoPoxy is a high-gloss, water-based, low VOC, penetrating epoxy coating that has been specifically formulated to protect interior commercial or residential cementitious floors. (Cem-Coat only)

UreMax WB is a two-part, matte-finish, water-based polyurethane that forms a durable, high-solids coating. (Cem-Coat only)

Poly-Astic (interior use) is a two-part, high solids, high build sealer designed for use on concrete or masonry surfaces. (Cem-Coat only)

Satin-Seal is a water-based acrylic VOC-compliant sealer that reduces the effect of efflorescence on porous surfaces, while forming a non-yellowing, scuff-resistant finish that resists moisture penetration. (Cem-Coat only)

Dura-Wax (interior use) is an acrylic wax that forms a long-lasting protective coating over a Brickform sealer. (Cem-Coat only)

REFER TO TECHNICAL DATA SHEETS PRIOR TO APPLICATION.



Resurfacing *Systems*



Primer

Triple Seven Bond Coat is a reactive primer, forming a chemical link between the overlay and the substrate. It increases the bond strength by creating a more efficient chemical link between the concrete and the overlay.

Overlay

SM Professional Grade can be troweled or sprayed using a hopper gun to create unlimited patterns and designs when using stencils and taping out patterns.

Add Micro-Topping to create a smooth durable concrete surface that can be colored or stained.

Stampable Overlay, SC-60 "white", is specially designed to work with Overlay Liquid Colorant and Liquid Release.

Stampable Overlay, OL-60 "gray", is specially designed to work with Color Hardener and Antique Release, perfect for high-traffic areas.

Coloring

Overlay Liquid Colorant designed for Brickform resurfacing products. (Micro-Topping, SM Professional Grade, and Stampable Overlay, SC-60 "white.")

Color Hardener and Antique Release (OL-60 "gray").

Blush-Tone Acid Stain reacts with minerals that exist in newly cured or existing concrete, penetrating the very top layer of the concrete surface with variegated color that will not chip, crack, or peel.

E-Stain creates a chemical reaction within the concrete substrate that slightly etches the concrete surface to provide deeper and more permanent color.

ARTesian Stain contains no acids or harmful chemicals and works as an alternative to typical reactive acid stains.

Pro-Dye (interior use only) penetrates the surface of concrete, creating a layer of translucent color that dries quickly and will not chip, crack, or peel. It is excellent in vertical applications, stencils, and logos because it dries so quickly and colors are vivid with unique multi-colored intensities, similar to the mottling effect of acid stain.

Cem-Coat is a high-quality self-priming cementitious coating. For use on interior or exterior concrete surfaces. Antique with water soluble Antique-It.

FreestylePRO is an ultra-low VOC, water-based, penetrating, polymer modified concrete stain. It is designed to rejuvenate cured concrete and overlay surfaces providing a solid color that requires no sealer.

Sealers

Poly-Seal is a medium-to-high sheen, solvent-based, super-tough acrylic sealer that is easy to clean and maintain.

Gem-Seal is a high-gloss, solvent-based, non-yellowing sealer.

Safety-Seal is a matte-finish, solvent-based sealer designed to be slip-resistant and is ideal around pool decks and areas where water or moisture can accumulate.

Stealth-Seal is non-film forming water and oil repellent that effectively protects and preserves the natural appearance of any surface it's applied on.

Interior Use Sealers

DecoPoxy is a high-gloss, water-based, low VOC, penetrating epoxy coating that has been specifically formulated to protect interior commercial or residential cementitious floors.

UreMax WB is a two-part, matte-finish, water-based polyurethane that forms a durable, high-solids coating.

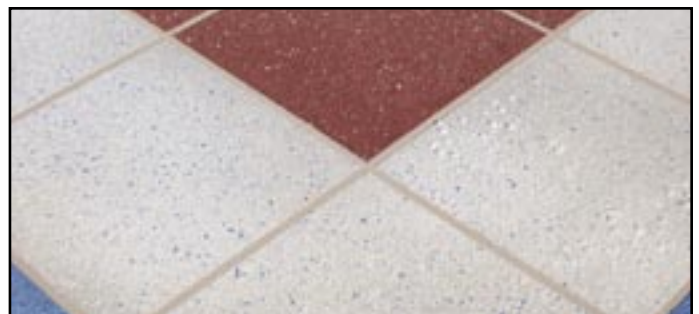
Poly-Astic (interior use) is a two-part, high solids, high build sealer designed for use on concrete or masonry surfaces.

Dura-Wax (interior use only) is an acrylic wax that forms a long-lasting protective coating over a Brickform sealer.

Maintenance

Dura-Wax.

REFER TO TECHNICAL DATA SHEETS PRIOR TO APPLICATION.





Staining *Systems*

Surface Preparation

E-Etch concrete degreaser and light etching agent. On hard troweled surfaces, refer to the Technical Data Sheet.

Coloring

Blush-Tone Acid Stain reacts with minerals that exist in newly cured or existing concrete, penetrating the very top layer of the concrete surface with variegated color that will not chip, crack, or peel.

E-Stain creates a chemical reaction within the concrete substrate that slightly etches the concrete surface to provide deeper and more permanent color.

ARTesian Stain contains no acids or harmful chemicals and works as an alternative to typical reactive acid stains.

Pro-Dye (interior use only) penetrates the surface of concrete, creating a layer of translucent color that dries quickly and will not chip, crack, or peel. It is excellent in vertical applications, stencils, and logos because it dries so quickly and colors are vivid with unique multi-colored intensities, similar to the mottling effect of acid stain.

Sealer Preparation

Neutral Clean is a cleaning and neutralizing agent engineered for use on acid and reactive stained floors prior to sealing and to remove light oil, grease or other types of soils from colored, imprinted and natural concrete surfaces.

Sealers

Poly-Seal is a medium-to-high sheen, solvent-based, super-tough acrylic sealer that is easy to clean and maintain.

Gem-Seal is a high-gloss, solvent-based, non-yellowing sealer.

Safety-Seal is a matte-finish, solvent-based sealer designed to be slip-resistant and is ideal around pool decks and areas where water or moisture can accumulate.

Stealth-Seal is non-film forming water and oil repellent that effectively protects and preserves the natural appearance of any surface it's applied on.

Interior Use Sealers

DecoPoxy is a high-gloss, water-based, low VOC, penetrating epoxy coating that has been specifically formulated to protect interior commercial or residential cementitious floors.

UreMax WB is a two-part, matte-finish, water-based polyurethane that forms a durable, high-solids coating.

Poly-Astic (interior use) is a two-part, high solids, high build sealer designed for use on concrete or masonry surfaces.

Dura-Wax (interior use only) is an acrylic wax that forms a long-lasting protective coating over a Brickform sealer.

Maintenance

Dura-Wax.

REFER TO TECHNICAL DATA SHEETS PRIOR TO APPLICATION.



Polishing *Systems*



Densifier

Lythic Densifier and XL Densifier are specifically formulated to increase durability and save both time and labor.

Coloring

Pro-Dye (interior use only) penetrates the surface of concrete, creating a layer of translucent color that dries quickly and will not chip, crack, or peel. It is excellent in vertical applications, stencils, and logos because it dries so quickly and colors are vivid with unique multi-colored intensities, similar to the mottling effect of acid stain.

Liquid or Powdered Integral Colors, meeting ASTM C979 standards. Integral colors are designed to color the cement paste in a concrete mixture.

Protector

Lythic Protector and SPD Protector toughen the concrete, enhance color, create depth of shine and improve traction of polished surfaces. It also contains lithium to extend water repellency and stain resistance.

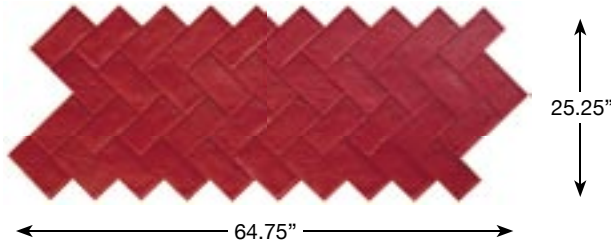
Cleaner

Lythic Cleaner adds silica to the surface as it cleans. Reactive colloidal silica bonds to concrete, so every cleaning improves resistance to abrasion and liquid penetration. Lythic Cleaner is suited for everyday use.

REFER TO TECHNICAL DATA SHEETS PRIOR TO APPLICATION.

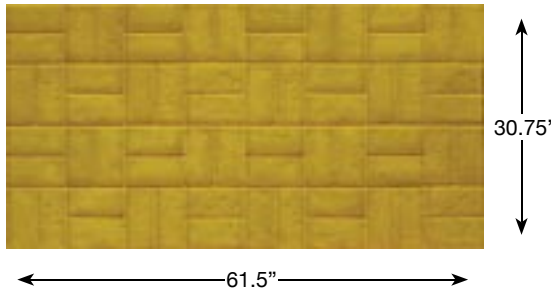


Speciality Gang Tools (Made-to-Order )



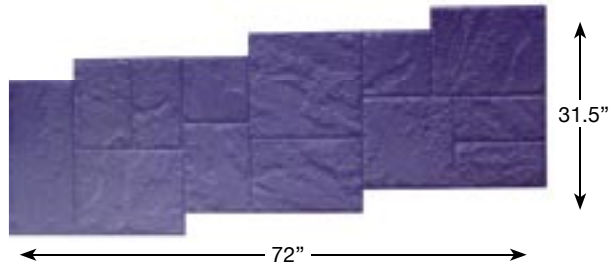
Herringbone Used Brick
FM-5000GANG

Red
A weatherworn brick surface with an uneven texture and rounded broken edges



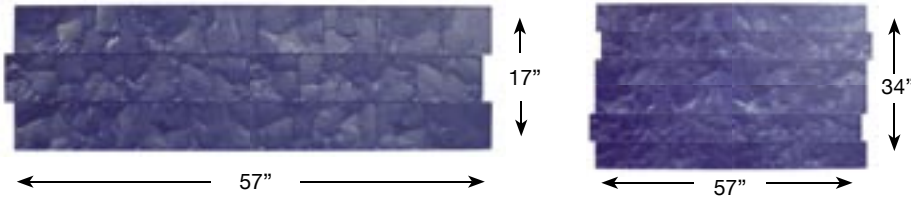
Basket Weave Used Brick
FM-5200GANG

Yellow
Used bricks in a basket weave pattern with smooth un-grouted joints



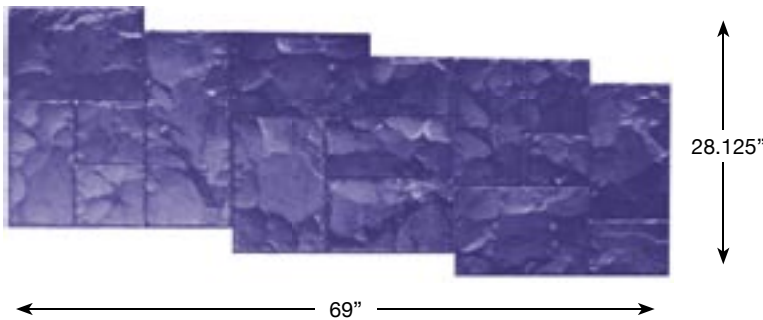
Rough Cut Ashlar
FM-100GANG

Blue
Rough hand-tooled stones arranged in an Ashlar pattern



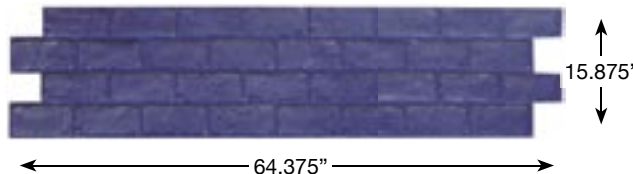
London Cobble
FM-540GANG

FM-540QUAD
Blue
A traditional lightly textured cobblestone pattern



Ashlar Cut Slate
FM-3125GANG

Blue
A naturally laminated stone texture split along parallel planes, hand-tooled to create a more pronounced chipped fragmented texture with small deep joints





Running Bond Used Brick
FM-5100GANG

Blue
Used bricks laid end-to-end, with sandy joints


Speciality Border Tools (Made-to-Order




Swirl Border, FM-925 
 12" x 48" (30.48 x 121.92 cm) Blue
 An elegant scrolling pattern with a surrounding smooth border

Swirl Border Corner, FM-926 
 12" x 12" (30.48 x 30.48 cm) Blue




Spring Medallion, FM-930 
 12" x 36" (30.48 x 121.92 cm) Yellow
 A classic geometric pattern with curved shapes



Grapevine Border, FM-910 
 12" x 48" (30.48 x 121.92 cm) Blue
 A grapevine border with textured background

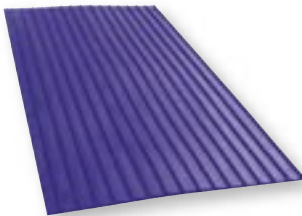
Grapevine Border Corner, FM-911 
 12" x 12" (30.48 x 30.48 cm) Blue




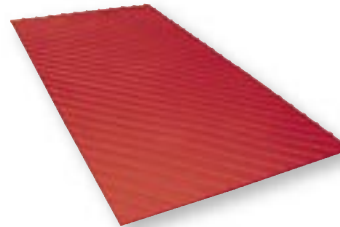
Grapevine Strand, FM-912 
 12" x 48" (30.48 x 121.92 cm) Blue
 A stand-alone grapevine border


Idea: Place Grapevine face down under texture mat, and then stamp to create an unique dual image.

Cal-Trans Series Texture Mats (Made-to-Order



Cal-trans 1 1/2" Straight Grooves
HR-100 
 24.125" x 47.875" (61.27 x 121.60 cm)
 Blue
 Smooth 1/4" grooves spaced 1 1/2" apart
 Also Available:
HR-400
 Cal-trans 3/4" Straight Grooves
 12.25" x 48.25" (31.12 x 122.56 cm) Blue
 Smooth 1/4" grooves spaced 1/2" apart




Cal-trans 45° Left 
HR-200L
 24.125" x 48.125"
 (61.27 x 122.23 cm) Red
 Smooth grooves running the entire length of the tool at a 45° angle (Left orientation)
 Also Available:
HR-200 R
 Cal-trans 45° Right
 24.125" x 48.25" (61.27 x 122.56 cm)
 Yellow
 Smooth grooves running the entire length of the tool at a 45° angle (Right orientation)


Graphic Warning Imprints (Made-to-Order

BRICKFORM carries a complete line of graphic imprints. Call for available patterns **1-800-483-9628**.



No Dumping Flows To River 
FM-6100
 12" x 33.937" (30.48 x 86.2 cm)
 Blue



High Voltage 
FM-6240
 5.5" x 12" (13.97 x 30.48 cm)
 Yellow



Warning Post Tension 
FM-6210
 8" x 12" (20.32 x 30.48 cm)
 Red

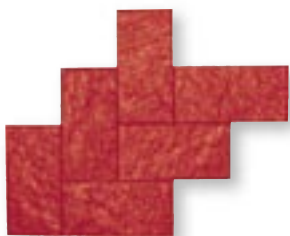
Made-to-Order Tools

| Part # | Color | Description | Size |
|----------|-------|--|-----------------|
| FM- 20-R | Y | 20 x 20 Hand Tool-Stone Texture S/O | 20 x 20 |
| FM- 20-S | B | Hand Tool-Slate Texture S/O | 20 x 20 |
| FM- 225 | Y | 4 x 4 Mountain Stone Granite Sets S/O | 24 x 24 |
| FM- 275 | Y | 8 x 8 Granite Sets S/O | 24 x 24 |
| FM- 285 | B | Old English Cobblestone (Stair Step) | 20 3/4 x 43 1/2 |
| FM- 325 | B | 12 x 12 Heavy Stone S/O | 24 x 24 |
| FM- 350 | B | 12 x 12 Utah Stone S/O | 24 x 24 |
| FM- 375 | B | Stone Texture with 1/2" Joints | 24 x 24 |
| FM- 400 | B | 12 x 12 Yucatan Tile S/O | 24 x 24 |
| FM- 450 | B | Antiqua Stone (Stairstep) | 25 x 33 |
| FM- 660 | Y | 24 x 24 Keystone (Coquina Stone) | 23 1/2 x 23 1/2 |
| FM- 675 | R | San Juan Pavers | 29 1/2 x 30 |
| FM- 725 | R Y B | Beverly Hills Random Stone | 29 1/8 x 29 1/8 |
| FM- 795 | R | Santa Fe Pebble | 36 x 36 |
| FM- 800 | B | 36 x 36 Blue Stone S/O | 36 x 36 |
| FM- 900 | B | 18 x 18 Utah Stone S/O | 18 x 36 |
| FM- 915 | B | Autumn Leaf Border Tool | 12 x 36 |



**Autumn Leaf Border
FM-915**
12" x 36" (30.48 x 91.44 cm)
Yellow
A rustic pattern featuring autumn leaves and flowers

| | | | |
|---------|-----|------------------------------------|-----------------|
| FM- 916 | Y | Autumn Leaf Border Corner | 12 x 12 |
| FM- 920 | R | Whale Border Tool | 12 x 48 |
| FM-1000 | R B | Opa Locka Stone S/O | 19 3/4 x 29 3/4 |
| FM-1150 | R | Metro Cobble - 1 S/O | 24 x 28 |
| FM-1151 | B | Metro Cobble - 2 S/O | 24 x 32 |
| FM-1250 | R | 4 x 12 Cut Stone Border S/O | 13 x 34 7/8 |
| FM-1275 | R | 4 x 8 Cut Stone Double S/O | 8 3/8 x 8 3/8 |
| FM-1280 | R | 4 x 12 Cut Stone Double S/O | 8 3/8 x 12 7/8 |
| FM-1285 | R | Garden Stone | 36 x 36 |
| FM-1400 | Y B | 36 x 36 Heavy Stone Texture | 36 x 36 |
| FM-1420 | Y | 24 x 24 Heavy Stone Texture | 24 x 24 |
| FM-1440 | Y | 18 x 18 Heavy Stone Texture | 18 x 18 |
| FM-1450 | R B | 18 x 36 Heavy Stone Texture | 18 x 36 |
| FM-1460 | B | 60 x 60 Heavy Stone Texture | 60 x 60 |
| FM-1500 | R B | Walkway Stone S/O | 18 x 35 7/8 |
| FM-1700 | R | Large Herringbone (Rough Stone) | 32 x 40 |
| FM-2350 | B | 12 x 12 Blue Stone S/O | 24 x 36 |



**Large Herringbone
FM-1700 S/O**
32" x 40" (81.28 x 101.6 cm)
A porous brick texture in a classic herringbone pattern

| | | | |
|----------|-----|---------------------------------|---------|
| FM-2490 | Y | 60 x 60 Compass Rose S/O | 60 x 60 |
| FM-3175A | R B | 6 x 24 Yorkstone S/O | 6 x 24 |
| FM-3175B | R B | 12 x 12 Yorkstone S/O | 12 x 12 |
| FM-3175C | R B | 12 x 18 Yorkstone S/O | 12 x 18 |
| FM-3175D | R B | 18 x 18 Yorkstone S/O | 18 x 18 |
| FM-3175E | R B | 18 x 30 Yorkstone S/O | 18 x 30 |
| FM-3175G | R B | 24 x 24 Yorkstone S/O | 24 x 24 |

| Part # | Color | Description | Size |
|-----------|-------|--|-----------------|
| FM-3175HR | B | 30 x 30 Yorkstone S/O | 30 x 30 |
| FM-3175S | R B | Yorkstone Set | 2 @ 6 x 24 |
| FM-3190 | R | 48 x 48 Slate Texture with Joint S/O | 48 x 48 |
| FM-3575 | B | 12 x 24 Running Bond Slate | 24 1/2 x 60 1/2 |
| FM-3650 | R Y B | Regal Ashlar S/O | 36 x 36 |
| FM-5020 | R | Herringbone Used Brick (New Mold) | 28 1/2 x 46 |
| FM-5080 | R | Herringbone New Brick Butt Joint | 32 x 36 |
| FM-5085 | B | Herringbone Used Brick Butt Joint | 32 x 36 |
| FM-5090 | R | Untextured Herringbone Brick with 1/2" V-Joint | 32 x 36 |
| FM-5140 | B | Running Bond New Brick 1/4" Joint | 23 3/4 x 35 1/2 |



Untextured Running Bond Brick with 1/2" V-Joint, FM-5160
19.375" x 34.75" (49.21 x 88.26 cm)
Smooth untextured bricks with angled joints

| | | | |
|---------|-------|--|-----------------|
| FM-5160 | B | 4 x 8 Untextured Runningbond Brick w/ 1/2" V-Joint | 19 3/8 x 34 3/4 |
| FM-5225 | R | Old English Basket Weave | 16 3/4 x 33 1/2 |
| FM-5350 | R | 4 x 8 Basket Weave Used Brick Border | 8 1/4 x 32 |
| FM-5375 | R | 4 x 8 Basket Weave New Brick Border | 7 1/2 x 31 3/4 |
| FM-5400 | Y | Used Brick Corner | 8 1/2 x 8 1/2 |
| FM-5450 | B | New Brick Corner | 8 1/2 x 8 1/2 |
| FM-5650 | R | 4 x 8 New Brick Runner | 4 1/2 x 32 3/8 |
| FM-5700 | Y | Used Brick Double | 8 3/8 x 8 9/16 |
| FM-5750 | B | New Brick Double | 8 3/8 x 8 9/16 |
| FM-7000 | R | 12 x 12 Mexican Tile-Smooth Texture | 23 3/4 x 35 3/4 |
| FM-7025 | R | Santa Barbara Tile | 30 3/4 x 30 3/4 |
| FM-7125 | R | Octagon Tile Flower | 5 x 5 |
| FM-7150 | R Y B | Un-Textured Ashlar with 1/2" V-Joint | 23 1/8 x 23 1/8 |
| FM-8015 | Y | 3' Cedar Wood Flooring | 18 x 82 |
| FM-8100 | B | 2' Wood Plank S/O | 12 x 24 |
| FM-8200 | B | 3' Wood Plank S/O | 12 x 36 |
| FM-8300 | B | 4' Wood Plank S/O | 12 x 48 |
| FM-8400 | B | 6' Wood Plank S/O | 12 x 72 |
| FM-8500 | B | 8' Wood Plank S/O | 12 x 96 |



Compass Rose, FM-2490 S/O
60" x 60" (152.4 x 152.4 cm)
Yellow

| | | | |
|---------|-----|--|-----------------|
| FM-8600 | B | Wood Block | 22 1/8 x 33 1/8 |
| OL- 100 | R B | Ashlar Stone S/O | 24 x 24 |
| OL- 400 | R B | Sidewalk Stone S/O | 18 x 36 |
| OL- 700 | Y | 24 x 24 Coquina Stone (Salt Finish) S/O | 24 x 24 |
| OL- 800 | Y B | Random Stone S/O | 30 x 30 |
| TM-1000 | A | 4 x 12 Brick Border | 12 x 48 |
| TM-1040 | A | 12 x 12 Mexican Tile Border | 12 x 48 |
| TM-1100 | A | Danish Fan | 39 1/2 x 63 1/4 |
| TM-1600 | A | Tear Drop Fan | 56 x 60 |
| TM-1660 | A | Hexagon-Smooth with 1/2" Joints | 35 3/8 x 51 1/8 |

How To Order Texture Skins

Select the characteristics of your Texture Skin by choosing one option from each section and entering the order number or letter in sections A through E. Then build the part number.

For more information and approximate lead times on special or custom orders, please contact Customer Service at 1-800-483-9628.

Section A. Choose the Texture ( Indicates Made-to-Order, additional production lead time)

- | | | |
|---|---|--|
| <input type="checkbox"/> [A] Blue Stone | <input type="checkbox"/> [H] Roman Slate | <input type="checkbox"/> [R] Elk Mountain (veined) |
| <input type="checkbox"/> [B] Limestone  | <input type="checkbox"/> [J] Yucatan  | <input type="checkbox"/> [S] Regal Ashlar |
| <input type="checkbox"/> [C] Rough Stone | <input type="checkbox"/> [K] Sierra Seamless | <input type="checkbox"/> [T] Cracked Mud |
| <input type="checkbox"/> [D] Heavy Stone | <input type="checkbox"/> [L] Rocky Mtn. Stone  (Large size is 36"x48") | <input type="checkbox"/> [U] Lunar Rock |
| <input type="checkbox"/> [E] Sanded Slate | <input type="checkbox"/> [O] Smooth Slate | <input type="checkbox"/> [V] Super Slate |
| <input type="checkbox"/> [F] Renaissance Slate | <input type="checkbox"/> [P] Desert Slate | <input type="checkbox"/> [W] Sidewalk Stone |
| <input type="checkbox"/> [G] Chiseled Slate  | <input type="checkbox"/> [Q] Elk Mountain | <input type="checkbox"/> [X] Riviera Slate |

Section B. Choose the Size of the Texture Skin

- | | | |
|--|---|--|
| <input type="checkbox"/> [1] Extra Small (Approx. 12" x 12") | <input type="checkbox"/> [3] Medium (Approx. 36" x 36") | <input type="checkbox"/> [5]*Extra Large (Approx. 60" x 60") |
| <input type="checkbox"/> [2] Small (Approx. 24" x 24") | <input type="checkbox"/> [4] Large (Approx. 48" x 48") | <i>Limestone, Rough Stone, Heavy Stone, Sierra Seamless, and Desert Slate only</i> |

Approximate size based on hand pour of each tool.

Section C. Choose a Flex-Rating

- | | | |
|--|---|--|
| <input type="checkbox"/> [S] Ultra Flexible (soft)  <i>For finishing and corners</i> | <input type="checkbox"/> [C] Classic Flexible (medium)  <i>Original BRICKFORM medium flexibility, detailed feathered edge</i> | <input type="checkbox"/> [M] Standard Flexible (firm) <i>Tough, rigid skin - tighter feathered edge</i> |
|--|---|--|

Section D. Choose the shape of the Texture Skin

- | | |
|---|-------------------------------------|
| <input type="checkbox"/> [1] Free Formed (rounded) <i>Custom order – 2 week production lead time</i> | <input type="checkbox"/> [2] Square |
|---|-------------------------------------|

Section E. Choose with or without handles (Ultra-Flexible not available with handles)

- | | |
|---|--|
| <input type="checkbox"/> [N] Without Handles <i>Custom order – 2 week production lead time</i> | <input type="checkbox"/> [Y] With Handles <i>(Sizes medium, large, and extra large)</i> |
|---|--|

| | | | | | |
|--|-----------------|-----------------|-----------------|-----------------|-----------------|
| PART NUMBER FM- (insert numbers/letters chosen from sections) | Section A _____ | Section B _____ | Section C _____ | Section D _____ | Section E _____ |
|--|-----------------|-----------------|-----------------|-----------------|-----------------|

Part number Sample: A4M2Y = Blue Stone, Large, Medium-Density, Square, With Handles

Disclaimer - All measurements are nominal. Skin and texture mat measurements are based on the Brickform mold size. Urethane has a natural tendency to shrink or expand, depending on environmental factors. This does not affect how the mats fit together.

Toll Free: 1-800-483-9628 • www.brickform.com

Corporate Headquarters
4050 Color Plant Road
Springfield, IL 62702

Division Headquarters
360 S. Lilac
Rialto, CA 92376

Southwest Distribution
Dallas, Texas

COLOR HARDENER™

Defining Decorative Concrete™

BRICKFORM

A Division of Solomon Colors, Inc.

PROFESSIONAL USE ONLY - 60 lbs