

RICOH
imagine. change.

Ricoh Aficio MP 301SPF

Multifunction B&W

Copier Printer Facsimile Scanner



MP 301SPF

31 ppm
monochrome

Affordable, productive multitasking at your convenience

Raise your expectations — and improve your productivity. The RICOH® Aficio® MP 301SPF offers advanced capabilities to streamline workflow and reduce total cost of ownership. Use it to produce fast, black-and-white output, share electronic documents, protect sensitive information and optimize IT resources cost-effectively. With its unique combination of powerful, reliable performance and intuitive management in a compact design, it offers incredible value as the primary multifunction device in an office or as part of an integrated Ricoh Managed Document Services (MDS) strategy throughout the enterprise. Expect the MP 301SPF to exceed your low-volume, desktop multifunctional product demands without compromising space or the budget.

Choose your own efficiency

Loaded with customizable features in a sleek, desktop design, the MP 301SPF makes everyday tasks more accessible. The tiltable, 4.3" color touch-panel display and an optional external keyboard enable users to deftly manage every job with ease. Four frequently used functions are available directly from the Home Screen, so users can select specific workflows quickly to save steps and help maximize productivity. In addition, users can return to the Home Screen at any time with simple, one-touch operation.



Perform any task, anywhere

Move mobile users forward, while improving workflow, with innovative electronic media capabilities. Users can insert a USB memory or SD card into a slot on the MFP control panel to preview and print output remotely, without a PC. Users can also work from a mobile device, such as a smart phone or tablet, to locate the MFP quickly and print output without the use of utilities, software or drivers.



Discover the power of versatility

The MP 301SPF enables users to handle a wide range of demanding tasks with ease. It generates up to 31 pages per minute for outstanding throughput. Storage capacity can be expanded to 1,350 paper sheets to support longer, uninterrupted runs. Its 8" x 14" platen is perfect for copying, scanning and faxing oversized documents, including booklets, catalogs and other media. In addition, when the optional hard drive is installed the Document Server offers convenient access for up to 3,000 frequently-used documents.



A sleek, compact MFP streamlined for the desktop—and your workflow

Sustainable savings and productivity

Backed by Ricoh's long-standing commitment to energy- and environmentally-friendly solutions, the MP 301SPF offers a host of innovative features to reduce total cost of ownership. With the Eco-Friendly Indicator, users can check usage status for individual employees and foster more environmental awareness and responsible paper consumption. With its class leading energy efficiency, based on the low Typical Energy Consumption (TEC) value of only 1.5 kWh/week, combined with a short recovery time of less than 10 seconds from Sleep Mode, high speed duplexing and enhanced first copy out time, the system provides a quicker availability and saves more energy.



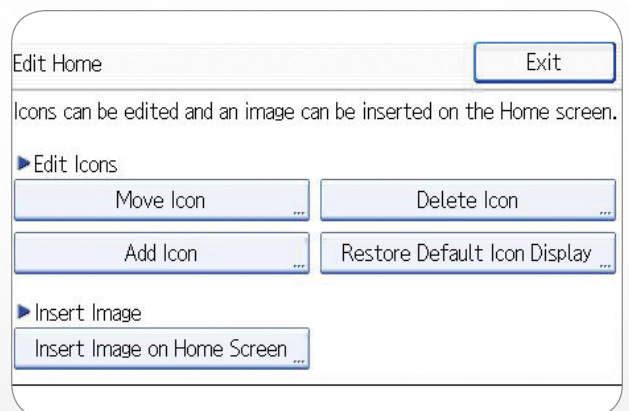
Sophisticated scanning and faxing

Capture black-and-white or full-color originals quickly and distribute them electronically for faster, more affordable communications. Users can retrieve numbers and addresses from LDAP-registered directories and eliminate costly delivery charges by sending documents instantly via Scan-to-Email/Folder/SD/USB. One-sided and two-sided originals can be scanned in a single job using Enhanced Batch Scan to boost productivity. Plus, a powerful Super G3 fax modem, IP (T.38) and Internet (T.37) faxing minimize bottlenecks while eliminating transmission costs.



Complex management tasks simplified

With exceptional compatibility and easy-to-use utilities, the MFP automates processes and optimizes workflow. Users can take advantage of Ricoh's services-led platform to integrate customized applications and software solutions to boost productivity and help reduce operating costs. Shortcuts, system and application settings and more can be exported to an SD card for installation on another MP 301. Workflows can be customized from the desktop and accessed within moments for fast walk-up operations on the most comprehensive jobs.



General Specifications

Configuration	Desktop Multifunctional Product (MFP)
Scanning Element	Flatbed with CCD array image-sensing element
Printing Process	Laser beam scanning/marketing & electro-photographic printing
System Memory	1GB. (RAM) standard
Output Speed (Copy/Print)	Up to 31 ppm (Letter)
First Copy Time	6 seconds or less
Recovery Time to Product Ready Mode	Less than 23 seconds (from main power switch on)
Copy Resolution	600 x 600 dpi (platen), 600 x 300 (ARDF)
Grayscale	256 levels
Exposure Adjustment	Manual and automatic
Multiple Copies	Up to 99
Document Feeder (Standard)	Automatic Reversing Document Feeder (ARDF)
Original Capacity	50 sheets (ARDF)
Paper Sizes	Standard Tray: 5.5" x 8.5" to 8.5" x 11" (A4/ LT/A5/HLT) Optional Trays: 8.5" x 11" to 8.5" x 14" (A4/LT/ LG/Folio) Bypass Tray: 5.5" x 8.5" to 8.5" x 14" (A6/A5/A4/LT/LG) Duplex Unit: 8.5" x 11" to 8.5" x 14" (A4/LT/LG)
Paper Weights	Standard/Optional Trays: 16 – 24 lb. Bond (60 – 90 g/m) Bypass Tray: 16 – 42 lb. Bond (60 – 157 g/m) Duplex Unit: 20 – 24 lb. Bond (60 – 90 g/m) Up to 8.5" x 14"
Exposure Glass	Standard: 250 sheets + 100-Sheet Bypass Tray
Input Capacity	Optional: 500 sheets x 1 or 2 Trays
Output Capacity	250 sheets (internal tray)
Paper Types	Plain, Recycled, Colored, Letterhead, Preprinted, Bond, Card Stock, Prepunched, Special, Thick*, OHP (Transparency)*, Envelopes*, Label Stock*
Auto Duplex	Standard
Zoom	25% to 400% in 1% increments
Preset Reduction and Enlargement Ratios	65%, 78%, 93%, 129%, 155%
Dimensions (WxDxH)	19.0" x 17.7" x 18.1" (476 mm x 450 mm x 451 mm) – includes ARDF
Weight	57.3 lbs./ 26 kg.
Power Requirements	120V, 60Hz, 8A
Power Consumption	Less than 1,1 kW (max.) Sleep Mode, 2.8 W (MP 301SPF) MP 301SPF – 1.507 kWh/week***
TEC	
Standard Features	Document Server**, Image Rotation, Auto Off Timer, Combine Copy, Electronic Sort, Energy Saver Timer, Photo Mode, Series Copy, Job Programs (25), User Codes (8 digits, 1,000 Personal Codes)

*Bypass Tray only.
**HDD option required.
***Typical electric consumption by ENERGY STAR program

Printer

CPU	RM7035C – 533 MHz
Memory Capacity	Standard: 1 GB RAM
Hard Disk Drive	Optional: 128 GB HDD
Page Description Languages	Standard: PCL5e/6, Genuine Adobe® PostScript®3
Maximum Print Resolution	600 x 600 dpi
Standard Interfaces	Ethernet (RJ-45 network port : 10Base-T/100Base-TX), USB2.0 Type A and B
Optional Interfaces	IEEE1284, Wireless LAN (IEEE802.11a/b/g), Giga Ethernet (1000BASE-T), Bluetooth
Network Protocols	TCP/IP (IPv4, IPv6), IPX/SPX (available with Netware option)
Fonts for PCL 5e/6	45 Roman fonts
Fonts for PS3	136 Roman fonts
Network Operating Systems	Windows XP/Server 2003/Vista/Server 2008/7; Novell Netware 6.5; UNIX Filters for Sun Solaris 2.6/7/8/9/10; HP-UX 10.x/11.x/11v2/11v3; Red Hat Linux Enterprise V4, V5, V6; SCO OpenServer 5.0.6/5.0.7/6.0; IBM AIX Version 5.3, 6.1, 7.1; SAP R/3, 3.x or later, mySAP, ERP2004 or later; Mac OS X 10.2 or later, Citrix Metaframe XP/ Presentation Server 4, 5/XenApp 5.0, 6.0
Utilities	SmartDeviceMonitor for Admin and Client, Web SmartDeviceMonitor, Web Image Monitor
Other Printer Features	Media Direct Print (Print from USB/SD), Mobile Driver, Bonjour Support, Classification Code, Mail to Print*, PDF Direct Print, Sample/Hold/Stored/Locked Print, Store and Print*, Windows Active Directory Support, DDNS Support, WSPrinter, PCL resident font adoption, Tray-Parameter Change from WebImageMonitor, XPS Support

*HDD option required.

Scanner

Scanning Speed	31 ipm @ 300 dpi B/W (LT) 21 ipm @ 300 dpi Full-Color (LT)
Scanning Resolution	100 to 600 dpi
Scan Area	Main: 8.5" (216 mm) Sub: 14.02" (356 mm)
Compression Method	B/W: MH (default), MR, MMR, JBIG2 Full-Color: JPEG
Scan Mode	B/W: Text, Text/Line Art, Text/Photo, Photo, Grayscale Full-Color: Text/Photo, Glossy Photo, Grayscale
Standard Interfaces	Ethernet 10BASE-T/100BASE-TX
Optional Interfaces	Wireless LAN (IEEE 802.11a/b/g), Gigabit Ethernet (1000BASE-T)
Scan Modes Supported	File Formats: Single/Multi Page TIFF, Single/Multi Page PDF, Single/Multi Page High Compression PDF and Single/Multi Page PDF/A; Single Page JPEG Scan-to-USB/SD, Scan-to-Email (POP, SMTP, TCP/IP); Scan-to-Folder (SMB/FTP/NCP); Network TWAIN Scanning; WSDScanner for Vista

Standard Features

PDF Encryption, Preview Before Transmission (TX Preview), Drop Out Color Send, Simultaneous Fax and Scan, Scan-to-Email/SMB/FTP/URL/NCP*, LDAP Support, TWAIN Scanning
--

Fax

Type	ITU-T (CCITT) G3
Circuit	PSTN, PBX
Resolution	200 x 100 dpi, 200 x 200 dpi
Modem Speed	33.6K – 2,400 bps with Auto Fallback
Compression Method	MH, MR, MMR, JBIG
Scan Speed	2.4 seconds (Letter)
Transmission Speed	Approx. 2 seconds/page (JBIG)
Memory	4 MB (approx. 320 pages)
Memory Backup	12 hours
Quick/Speed Dials	200 (2,000 with HDD Option)
Group Dials	10 groups (max. 100 numbers per group with HDD option)
User Function Key	3 keys
Standard Features	Detection of Misplaced Documents, Double Check Destination Address, Direct SMTP, Simultaneous Fax and Scan, Fax Forward to Email/Folder, Internet Fax (T.37), IP Fax (T.38), LAN Fax, Paperless Fax*, LDAP Support

*HDD option required.

Paper Feed Unit PB1040 (Option)

Paper Size	8.5" x 11" SEF, 8.5" x 14" SEF (A4/LT/LG)
Paper Weight	16 – 24 lb. Bond (60 – 90 g/m ²)
Paper Capacity	500 sheets x 1 or 2 Trays

Additional Options

HDD Option Type 301 (includes HDD overwrite and encryption), Cabinet, Type FAC57, Cabinet, Type FAC58, IEEE1284 Interface Board Type A, IEEE802.11a/g Interface Unit Type J, Gigabit Ethernet Board Type A, Bluetooth Interface Unit Type D, VM Card Type U, File Format Converter Type E, Browser Unit Type G, SD Card for NetWare Printing Type I, Unicode Font Package for SAP (1/10/100 License Packs available), Handset Type C5502, Optional Counter Interface Unit Type A, Copy Data Security Unit Type F, ACK3400-U Key Board

Security

Quota Setting/Account Limit; SMTP over SSL; Hard Disk Data Overwrite Security; Authentication (Windows/LDAP/Kerberos/Basic/ User Code/802.1x Wired); Encryption (Address Book/Authentication Password/SSL Communication/S/MIME/IPsec/Locked Print Password/HDD); Network Protocol (Port) On/Off; IP Filtering; Copy Data Security Unit; RAM Based Security when HDD is not installed

*Only required with HDD option.

Some features may require additional options.



MP 301SPF and FAC 57 Cabinet



MP 301SPF with Optional PB1040 Paper Tray and FAC 58 Cabinet



MP 301SPF with Two Optional PB1040 Paper Trays and FAC 58 Cabinet

Digital B&W Multifunction Printer

RICOH MP 2555SP MP 3055SP MP 3555SP

☑Copier ☑Printer ☑Facsimile ☑Scanner

RICOH
imagine. change.



RICOH
MP 2555SP

25
ppm Monochrome

RICOH
MP 3055SP

30
ppm Monochrome

RICOH
MP 3555SP

35
ppm Monochrome

Turn the everyday into an easy day

Use the RICOH® MP 2555SP/ MP 3055SP/ MP 3555SP to simplify everyday office tasks and move information to the people who need it most, in the format they prefer. Scan full-color images, brochures and other documents and distribute them instantly. With the same pinch-and-flick and scrolling gestures you use on your smartphone or tablet, you can access critical information, set shortcuts and distribute information from the advanced 10.1" Smart Operation Panel. Alternatively, you can use smart mobile devices to connect remotely and work on the go. Take advantage of advanced security controls to help protect your data.

- Print up to 35 prints/copies per minute for productive black-and-white output
- Use intuitive touchscreen controls to copy, print, scan and fax quickly
- Create your own workflows with shortcuts to simplify tasks
- Access, print and distribute information from your personal mobile device
- Minimize energy costs via a wide range of innovative eco-friendly features
- Produce professional-looking saddle-stitched and punched booklets, presentations and proposals
- Simplify sorting and stapling tasks with compact internal and high-output external finishers
- Toggle between stapled or stapleless finishing automatically with an external hybrid 1,000-sheet finisher



Value added in all ways

Make complex the easy way

Printing black-and-white notes, reports and presentations is effortless with speed up to 35 pages per minute (ppm). Scan with Single Pass Document Feeder (SPDF) for full-color originals at 220-Sheet per minute and distribute them digitally in an instant. Addition optional paper trays allows total paper capacity expand to 4,700 sheets to minimize interruptions.



Access anywhere and anytime

Simply download the RICOH Smart Device Connector app on your Android® or iOS® devices to copy, scan, fax and print. Sharing & retrieving information directly from cloud storage applications, such as Google Drive™, Box™ or Dropbox™ and print it. Simple connection via either Bluetooth or Near Field Communication (NFC) tag. Printing from AirPrint and Mopria are available too.



Compel with quality

To impress audiences with sharp images and precise text at up to 1,200 x 1,200 dpi resolution. These new devices now include standard PostScript to help improve productivity. With the 1.46 GHz Intel® based controller, you can handle your most complex printing and scanning tasks. Print on a wide range of paper types, you can even create an easy-to-see poster from one of your current documents.



Reduce costs and environmental impact

The MP 2555SP/ MP 3055SP/ MP 3555SP with a wide range of sustainable, eco-friendly features. It is ENERGY STAR® certified to help reduce your environmental footprint. You can also schedule the MFP to power down when the office is empty and reduce paper costs with default duplex printing.



Speed up your workflow

Use shortcuts to move ahead quickly

Customize your own personal workflows on the Smart Operation Panel and reduce repetitive manual steps that can impede the flow of information. Download easy-to-use workflow apps from the RICOH Application Site to add specific features or single-function capabilities to simplify how you perform everyday tasks. For example, Conference Concierge app will guide you step-by-step instructions on how to create supporting materials in the right format for your next big event.



Integrate with fast, easy workflows

Simplify even the most complex tasks by integrating Ricoh workflow software. Automate document management workflows, improve printer security controls, track costs, issue chargebacks and more. Use RICOH GlobalScan™ NX to reduce manual touch points, so you can convert them into digital files and route them around the globe in moments. RICOH Streamline NX® device management software, for centralized one-source control to expedite document management tasks for your entire fleet.



Get in touch with productivity

Designed with RICOH Workstyle Innovation Technology, the customizable 10.1" Smart Operation Panel uses your familiarity with today's touchscreen devices to provide a more intuitive user experience. Customize the user interface with specific icons for important settings and features with a single touch. The MFP includes a web browser, print web pages, images and documents that found online as PDFs.



Keep tabs on your best people and ideas

Protect information with a wide range of security controls. The hard disk drive offers powerful encryption protection. The built-in DataOverwriteSecurity System (DOSS) overwrites latent images remaining on the hard drive. With user authentication, users have to enter a passcode, billing code or swipe an ID card with the optional card readers to gain access to the MFP. RICOH Device Manager NX Accounting, optional accounting software, allows to issue chargebacks.



Make big productivity gains in small offices



1 Smart 10.1 inch Smart Operation Panel

4 Powerful Intel processor

2 1,000 sheet staple and stapleless hybrid finisher

5 Automatic and Single Pass Document Feeder for high speed scanning

3 High paper tray capacity of up to 4,700 sheets

RICOH MP 2555SP / MP 3055SP / MP 3555SP

MAIN SPECIFICATIONS

GENERAL		PAPER HANDLING	
Warm-up time:	20 seconds	Recommended paper size:	A3, A4, A5, A6, B4, B5, B6
First output speed:	4.6/4.6/4.3 seconds	Paper input capacity:	Standard: 1,200 sheets Maximum: 4,700 sheets
Continuous output speed:	25/30/35 pages per minutes	Paper weight:	52 - 300 g/m ²
Memory:	Standard: 2 GB	ECOLOGY	
HDD:	320 GB	Power consumption:	Maximum: 1,600 W Ready mode: 58.3 W Sleep mode: 0.84 W
Dimensions (W x D x H):	587 x 684 x 788 mm (MF only)	TEC (typical electricity consumption):	0.9/ 1.1/ 1.4 kWh
Weight:	62.5 kg (MF only)	OPTIONS	
Power source:	220-240 V, 50/60 Hz	PostScript3 Unit Type M29, ARDF DF3090, SPDF DF3100, Platen Cover PN2000, Marker Type 30, Paper Feed Unit PB3220, Paper Feed Unit PB3250, LCIT PB3260, LCIT RT3030, Caster Table Type M3, 1 Bin Tray BN3110, Internal Shift Tray SH3070, Side Tray Type M3, Bridge Unit BU3070, Finisher SR3210, Booklet Finisher SR3220, Punch Unit PU3050 NA, Punch Unit PU3050 EU, Punch Unit PU3050 SC, Finisher SR3230, Booklet Finisher SR3240, Punch Unit PU3060 NA, Punch Unit PU3060 EU, Punch Unit PU3060 SC, Internal Finisher SR3130, Punch Unit PU3040 NA, Punch Unit PU3040 EU, Punch Unit PU3040 SC, Internal Finisher SR3180, ADF Handle TypeC, USB Device Server Option Type M19, Unicode Font Package for SAP(R) 1 License, Unicode Font Package for SAP(R) 10 License, Unicode Font Package for SAP(R) 100 License, IEEE 802.11a/g/n Interface Unit Type M19, Extended USB Board Type M19, IEEE 1284 Interface Board Type M19, File Format Converter Type M19, FAX Memory Unit Type M19 64MB, OCR Unit Type M13, Optional Counter Interface Unit Type M12, Key Counter Bracket Type M3, External Keyboard Bracket TypeM19	
COPIER		<i>For availability of models, optional apparatus and software, please consult your local Ricoh supplier.</i>	
Copying process:	Single laser beam & electro-photographic printing		
Multiple copying:	Up to 999 copies		
Resolution:	600 x 600 dpi		
Zoom:	From 25% to 400% in 1% steps		
PRINTER			
Printer language:	Standard: PCL5e, PCL6, PDF Direct, PS3 (Emulation) Option: Adobe PostScript3, Adobe PDF		
Print resolution:	Maximum 1,200 x 1,200 dpi		
Interface:	Standard: USB Host I/F, Ethernet 10 base-T/100 base-TX/1000 base-T Option: Wireless LAN (IEEE 802.11a/b/g/n), Bluetooth, USB Server for Second Network Interface, Bidirectional IEEE 1284/ECP, USB 2.0		
Network protocol:	TCP/IP/IP v4, IP v6)		
Supported operating systems:	Windows Vista/7/8/8.1/10, Windows Server/2003/2008/2008 R2/2012/2012 R2		
Mac OS environments:	Mac OS X v.10.7 or later		
UNIX environments:	Sun Solaris, HP-UX, SCO OpenServer, Red Hat Linux, IBM AIX, IBM iSeries/A5/400-using OS/400 Host Print Transform		
SAP® R/3® environments:	SAP® R/3®		
FAX (OPTION)			
Circuit:	PSTN, PBX		
Compatibility:	ITU-T (CCITT) G3		
Resolution:	8 x 3.85 line/mm, 200 x 100 dpi (standard) 8 x 7.7 line/mm, 200 x 200 dpi (standard) 8 x 15.4 line/mm, 16 x 15.4 line/mm, 400 x 400 dpi (with optional SAF memory)		
Transmission speed:	G3: 2 seconds (200 x 100 dpi, JBIG) G3: 3 seconds (200 x 100 dpi, MMR)		
Modem speed:	Maximum: 33.6 Kbps		
SCANNER			
Scanning speed:	Full colour (max): 110 ipm (Simplex) / 180 ipm (Duplex) B&W (max): 110 ipm (Simplex) / 180 ipm (Duplex)		
Resolution:	Standard: 100 dpi, 200 dpi, 300 dpi, 400 dpi, 600 dpi Default: 200 dpi		
Original size:	A3, A4, A5, B4, B5, B6		
File format:	TIFF, JPEG, PDF, High Compression PDF, PDF-A		
Bundled drivers:	Network TWAIN Driver		
Scan to email:	SMTP (Mail Server) Gateway and TCP/IP, POP, IMAP4		
Scan to folder:	SMB, FTP		

RICOH
imagine. change.

www.ricoh-ap.com

RICOH ASIA PACIFIC PTE LTD

103 Penang Road #08-01/07, VISIONCREST Commercial, Singapore 238467
Phone: +65 6830 5888, Fax: +65 6830 5830

All brand and/or product names are trademarks of their respective owners. Specifications and external appearance are subject to change without notice. The colour of the actual product may vary from the colour shown in the brochure. The images in this brochure are not real photographs and slight differences in detail might appear. Copyright © 2016 Ricoh Asia Pacific Pte Ltd. All rights reserved. This brochure, its contents and/or layout may not be modified and/or adapted, copied in part or in whole and/or incorporated into other works without the prior written permission of Ricoh Asia Pacific Pte Ltd.



*Optional



*Optional



RICOH @Remote



*Genuine Adobe® PostScript®3 and PDF Direct from Adobe® are available as options.

Multifunction Color

RICOH MP C2004/ MP C2504

✓ Copier ✓ Printer ✓ Facsimile ✓ Scanner



RICOH
imagine. change.

MP C2004

20
ppm

monochrome
and full-color

MP C2504

25
ppm

monochrome
and full-color

Choose the smartest way to share your best ideas

You take pride in your work. You take it personally. Maybe it's time for a multifunction device designed just for you. With the RICOH® MP C2004/MP C2504, you can customize the way you work with iconic automated shortcuts, user-specific security controls and fingertip access to critical information via our solution-focused, Workstyle Innovation Technology. Use the intuitive touchscreen control panel to print impressive full-color documents. Scan and distribute originals to anyone, anywhere in moments. Access information easily from the Cloud. What's more, you can do it all from your smartphone or tablet. Place this affordable, compact device in smaller, shared office environments, so your entire workgroup can manage every job — from start to finish — with speed, accuracy and accountability.

- Deliver up to 25 color prints/copies per minute
- Perform a wide range of tasks quickly via intuitive touchscreen controls
- Create your own workflows and shortcuts to simplify everyday tasks
- Use your personal mobile device to print and share information
- Produce professional output in brilliant colors with impressive finishing
- Reduce operating costs with a wide range of eco-friendly features
- New motion sensor technology promotes fast system recovery



Make your work more personal and productive

Simplify how you capture and share information

Be ready for everything, every day

When you're short on time, tight on space and worried about stretching your budget, choose the MP C2004/MP C2504 to manage every project. Produce stunning handouts, flyers, notes, invoices, banners and more at speeds up to 25 pages per minute. When you want to share information instantly, use the 100-Sheet Automatic Reversing Document Feeder (ARDF) to expedite the scanning process and share digital files via a multitude of Scan-to capabilities. You can fax contracts and other forms just as quickly. In fact, you can send and receive faxes between email inboxes to save on paper, transmission costs and trips to the device checking for confirmations.



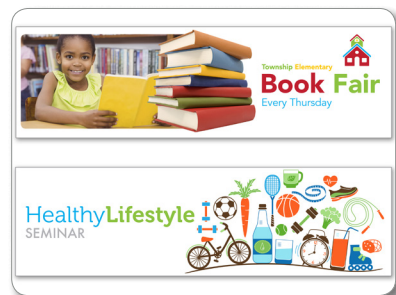
Use mobile convenience to stay productive

You don't know what the day will bring or where it'll take you, but you can stay productive using your smartphone or tablet. Simply download the RICOH Smart Device Connector App and get started by scanning the QR code on the display panel, or utilize Bluetooth technology (including BLE), or pass your device by the Near Field Communication (NFC) tag on the MFP. Print information directly from your personal device or from your favorite Cloud application and avoid utilities, software and drivers. Scan originals at the MFP, send them to your smartphone or tablet and carry the digital PDFs with you. Use any of the Scan-to options to share them with recipients in your personal address book in only moments. You can even take advantage of an optional dual network port and connect to multiple networks simultaneously.



Put more stock into your media options

Use the MP C2004/MP C2504 to tailor how you share your messages with almost any audience. Print everything from black-and-white handwritten notes to full-color retail signage. Expand paper capacity up to 2,300 sheets and focus on keeping information flowing instead of keeping paper trays stocked. Take advantage of our new innovative rollers designed to reduce paper curl for more uniform paper stacks and fewer jams. Print up to 12" x 18" sized paper in weights up to 300 gsm/80 lb. Bond for specialty media without compromising the 1200 x 1200 dpi image quality. In fact, the device recalibrates itself continuously so colors never fade.





Add a personal touch to everyday tasks

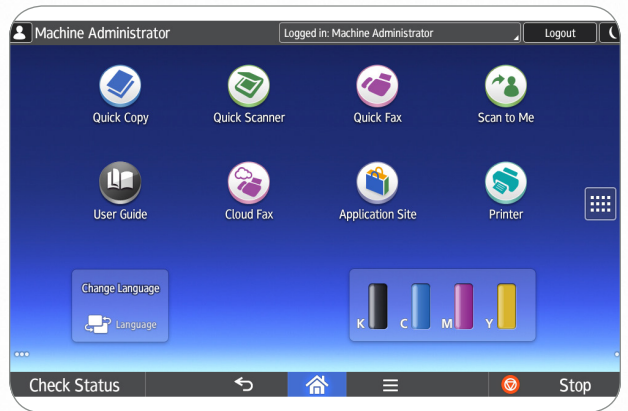
Streamline business with a whole new way to work

More productive workflows are within your grasp. Actually, they're at your fingertips. Use RICOH's Workstyle Innovation Technology to simplify how you manage your information on the 10.1" wide Super VGA touchscreen Smart Operational Panel. We've removed all hard keys, so you can use the same swipe scrolling, drag-and-drop and pinch-flick gestures you use on your smartphone or tablet to access settings and details faster and more conveniently. Simply tap an icon to begin core tasks like printing, scanning, copying and faxing. Choose which icons, options and notifications appear on your unique user interface to customize each user experience.



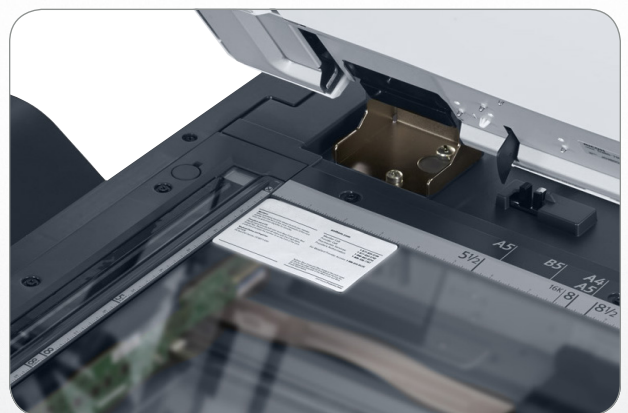
Access vital information when you need it most

When you're more informed, you can be more productive. Follow the intuitive grid design of the touchscreen to find information easily. Take your pick from a wide range of embedded Apps and simplify even your most complex workflows. Each App includes important details about specific jobs and tasks. For example, you can check Scan-to destinations, review finishing options, search fax confirmations and more. Use that information to make adjustments instantly with a swipe or tap. For even more ways to improve work efficiency, you can download free, intuitive Apps from the Ricoh Application Site and add them as new icons to the Home Screen. Information is everywhere, including online. With the MP C2004/MP C2504, you can access web pages and convert them into PDFs for easy distribution.



Put personalization at your fingertips

You know what you're doing. Leverage that knowledge to be more efficient. With Workstyle Innovation Technology, you can integrate multiple processes, simplify complex tasks and bypass many of the mundane, repetitive manual tasks that slow you down. For example, you can scan each week's sales meeting notes and share them with the same recipients in a single touch from the Home Screen. Take advantage of one-touch controls for special tasks too. Press the ID Card Copy icon to scan two-sided documents such as licenses or insurance cards onto a single-sided document in a single pass. For more advanced workflows, you can add optional plug-and-play workflow software to automate the way you manage information and help reduce operating costs.



Empower users to work quickly, collectively

Find exactly what you're looking for

It's your job to get information to clients, customers and co-workers before someone else does. Stay ahead of the pack with the MP C2004/MP C2504. Store up to 3,000 frequently used documents in the Document Server. Take advantage of the embedded OCR option to place metadata on each file so you can use keyword searches for fast, easy retrieval. You can keep some information for yourself to simplify administrative tasks. Use RICOH Device Manager NX or RICOH Web Image Monitor for configurations and updates via a web browser. Update print drivers automatically with RICOH Device Software Manager. Use RICOH @Remote to collect meter readings in real time. We can help, too. Our technicians can access your user interface remotely to provide real-time operational support or to troubleshoot almost any issue you encounter.



Control what happens next

You crafted your message carefully. You need to be just as cautious in getting it to your audience. Use the MP C2004/MP C2504 to track activity, set print quotas and restrict access to specific functions. Require every user to login to the device with a passcode or billing code. Or, add the optional NFC card reader so users gain access via their ID card for a choice of cost recovery solutions. Use Locked Print to hold print jobs at the device until the author releases them to protect confidential information from being seen by passersby. Add watermarks to help prevent unauthorized copies of important information. Plus, you can take advantage of powerful encryption tools and automatic overwrite technology for latent information residing on the hard drive.



Reduce energy costs in your office

We believe that saving money should be easy. That's why we made it automatic. The MP C2004/MP C2504 meets EPEAT® Gold criteria* and is ENERGY STAR® certified. Plus, it offers Typical Electricity Consumption (TEC) as low as 0.7 kWh/week. The device recovers from Sleep Mode in just 7.1 seconds, and with its motion sensor technology, powers up the operation panel in one second. Use default duplex printing to cut paper costs in half and take advantage of the Eco-Friendly widget to track paper savings or to share resource-conserving tips with users. Because we used noise-absorbing materials and minimized vibrations, you'll also notice less operating noise.

*EPEAT Gold rating is applicable only in the USA.



To view detailed features of our multifunction products online go to www.ricoh-usa.com/products

Expand what you can do in a smaller footprint



- 1 Smart Operation Panel:** Perform every task with speed and convenience via the 10.1" wide Super VGA Smart Operation Panel with selectable user interfaces. Access information instantly and customize automated workflows with one-touch smart applications. Add widgets to check information and use familiar swipe scrolling and pinch-and-flick movements to transition between tasks effortlessly.
- 2 100-Sheet Automatic Reversing Document Feeder (ARDF):** Easily handle multi-page, multi-sized originals and one- and two-sided documents up to 11" x 17".
- 3 User Authentication:** Use embedded NFC technology and an optional NFC Card Reader to track activity for every user who logs in by proximity card.
- 4 Paper Trays and 100-Sheet Bypass Tray:** Minimize paper replenishment with two standard front-loading Paper Trays that hold 550 sheets each. The Bypass Tray holds up to an additional 100 sheets in sizes up to 12.6" x 49.6". Add an optional Banner Paper Guide Tray for impressive banner printing. All three trays accept multiple paper types and weights. Tray Two and the Bypass Tray accommodate envelopes for in-house printing and a wide variety of mailing applications.
- 5 Paper Banks:** Choose the optional 1 x 550-Sheet Paper Bank or larger 2 x 550-Sheet Paper Bank, which boosts paper capacity to 2,300 sheets, to accommodate paper sizes up to 12" x 18" and SRA3/12.6".
- 6 Document Server:** Access up to 3,000 frequently used files residing on the MFP's hard drive in moments. Create up to 200 shared or passcode-protected personal folders to store the digital files.
- 7 125-Sheet One-Bin Tray:** Separate print, copy and fax output so users can retrieve documents quickly.
- 8 Internal and External Finishers:** Create professionally finished documents completely in-house and save floor space with the optional 500-Sheet Internal Finisher with optional 2 & 3-Hole Punching. Bind up to five sheets of paper with no staples using the Internal Stapleless Stapler Finisher option. This unique technology helps reduce supply costs, free up document storage space and expedite future paper shredding needs. Or choose the 1,000-Sheet External Booklet Finisher to create professional looking document sets in moments.
- 9 USB/SD Card Slot:** Print from or scan to portable media using the standard USB/SD Card Slot located conveniently on the control panel. Print TIFF, PDF or JPEG files from the removable media.
- 10 Web Browser:** Take advantage of the built-in web browser to search for web pages directly from the smart operation panel and print them as PDF files.

Impressive all the way to the finish line

Choose the finishing touches you want to put on your most important documents. Match one of our three powerful finishers to your unique needs, whether creating real estate materials, promotional advertising, construction blueprints or a wide range of other presentations. Each simplifies finishing tasks to provide a high-quality look without high labor costs.



Finisher	Paper Capacity (LT)	Hole-Punch	Saddle Stitch	Stapleless
SR3180 Internal	250 Sheets	N/A	N/A	Up to 5 Sheets
SR3130 Internal	500 Sheets	Option	N/A	N/A
SR3220 External	1,000 Sheets	Option	Up to 15 Sheets	N/A

General Specifications

Printing Process	4-Drum Method
Output Speed (Copy/Print)	MP C2004: 20-ppm B&W & Full-Color (LTR) MP C2504: 25-ppm B&W & Full-Color (LTR)
Warm-Up Time	26 seconds (from main switch)
Recovery from Sleep Mode	7.1 seconds
First Copy Time (Full-Color/B&W)	MP C2004: 7.6/5.4 seconds MP C2504: 7.5/5.3 seconds
Copy Resolution	600 dpi
Quantity Indicator	Up to 999 copies
Automatic Reversing Document Feeder (ARDF)	Original Capacity: 100 sheets Original Size: 5.5" x 8.5" - 11" x 17" (A5 - A3) Paper Weights: Simplex: 11 - 34 lb. Bond (40 - 128 g/m ²), Duplex: 14 - 34 lb. Bond (52 - 128 g/m ²)
Paper Capacity	Standard: 2 x 550 sheets + 100-Sheet Bypass Tray, Maximum: 2,300 sheets
Supported Paper Sizes	1st Paper Tray: 8.5" x 11" (A4) 2nd, 3rd, 4th Paper Trays: 5.5" x 8.5" - 12" x 18" (A6 - A3), Envelopes Bypass: Up to 12.6" x 18", Envelopes Custom Sizes: Width: 3.5" - 12.6" (90 - 320 mm), Length: 5.8" - 49.6" (148 - 1260 mm)
Supported Paper Weights	Standard Trays: 16 - 80 lb. Bond/166 lb. Index (60 - 300 g/m ²) Bypass Tray: 14 - 80 lb. Bond/166 lb. Index (52 - 300 g/m ²) Duplex Unit: 14 - 68 lb. Bond/142 lb. Index (52 - 256 g/m ²)
Paper Types	Plain, Recycled, Special Paper 1-3, Letterhead, Cardstock, Preprinted Paper, Bond Paper, High-Gloss Coated Paper, Color Paper, Envelopes*, Coated, Labels** & OHP**
Auto Duplex	Standard
Output Capacity	Standard: 500 sheets Maximum: 625 sheets (with options)
Zoom	25% - 400% in 1% increments
Dimensions (WxDxH) (Includes ARDF)	23.1" x 27.0" x 35.9" (587 x 685 x 913 mm)
Weight	197 lbs. (89.2 kg) (includes ARDF)

Power Requirements	120V - 127V, 60Hz, 12A
Power Consumption TEC Value***	1,584W or less; Sleep Mode: 0.8W MP C2004: 0.7 kWh/week MP C2504: 0.9 kWh/week
Noise Level (Full System/Standby)	MP C2004: 66.2/30.7 dB MP C2504: 67.1/30.7 dB
*Tray 2 and Bypass Tray Only. **Bypass Tray Only. ***Typical Electricity Consumption by ENERGY STAR Qualified Imaging Equipment Test Procedure.	
Printer Specifications (Standard)	
CPU	Intel Atom Processor Bay Trail 1.33 GHz
Memory /HDD	2 GB RAM/250GB HDD Standard & 4GB RAM/250 GB HDD Option
Page Description Languages	Standard: PCL5e, PCL6, PDF Optional: Adobe® PostScript®3, PictBridge, XPS
Font Support	Standard: PCL: 45 Scalable fonts + International 13 fonts Optional: PostScript 3: 136 Roman fonts 1200 x 1200 dpi
Max. Print Resolution	Standard: 1000Base-T/100Base-TX/10Base-T Ethernet, USB 2.0 Type A (3 Ports), SD Slot on Operation Panel
Network Interfaces	Optional: IEEE1284/ECP, IEEE802.11 a/b/g/n, USB 2.0 Type B TCP/IP (IPv4, IPv6)
Network Protocol Support	Windows Vista/7/8/8.1/Server 2008/Server 2008R2/Server2012/Server2012R2
Network/OS	Unix; Sun Solaris, HP-UX, SCO OpenServer, RedHat Linux, IBM AIX, Citrix Presentation Server4.5/Citrix XenApp5.0 Mac OS X v.10.7 or later, SAP R/3, IBM iSeries AS/400-using OS/400 Host Print Transform Device Manager NX Series, Web Image Monitor, @Remote
Utilities	

Document Server Specifications (Standard)

Max. Stored Documents	3,000
Max. Pages/Document	2,000
Max. Page Capacity	9,000
Max. Number of Folders	200

Scanner Specifications (Standard)

Scanner Resolution	B&W and Full-Color scanning at 100 - 600 dpi, Up to 1200 dpi for TWAIN scanning 80 ipm (200 dpi/300 dpi)
Scanning Speed (B&W & Full-Color LTR)	
Scan Area	11.7" x 17" (297 - 432 mm)
Compression Method	B&W TIFF: MH, MR, MMR, JBIG2 Full-Color: JPEG
Supported File Formats	Single/Multi-Page TIFF, PDF, High Compression PDF & PDF/A, Single Page JPEG
Scan Modes	Scan-to-Email (with LDAP support) Scan-to-Folder (SMB/FTP) Scan-to-URL Scan-to-Media (USB/SD Card) Network TWAIN Scanning
Facsimile Specifications (Optional)	
Type	ITU-T (CCITT) G3
Circuit	PSTN, PBX
Resolution	200 x 100 dpi, 200 x 200 dpi, 400 x 400 dpi (with optional SAF memory)
Modem Speed	33.6K - 2,400 bps w/Auto Fallback
Compression Method	MH, MR, MMR, JBIG
Transmission Speed	G3: Approximately 2 seconds/page (JBIG)
Scanning Speed	Up to 58 spm - Standard and Detail Mode (A4)
Auto Dialing	2,000 Quick/Speed Dial numbers; 100 Group Dial numbers
Memory Capacity (SAF)	Standard: 4 MB (approx. 320 pages), Optional: 64 MB (approx. 4,800 pages) with optional SAF memory

RICOH MP C2004/MP C2504

SYSTEM SPECIFICATIONS

Security Features (Standard)

DataOverwriteSecurity System (DOSS), HDD Encryption, User Codes, SNMP v3 Support, Locked Print, User Authentication, 802.1x Wired Authentication, Quota Setting/Account Limit, Digitally Signed PDF, and more

Hardware Accessories

Paper Handling Options

Two-Tray Paper Bank (PB3220)

Tray Capacity 1,100 sheets (550 sheets x 2 trays)
Paper Size 7.25" x 10.5" to 12" x 18" (A5 – A3)
Paper Weight 14 – 80 lb. Bond (52 – 300 g/m²)
Dimensions (WxDxH) 23.1" x 27" x 9.7" (587 x 685 x 247 mm)
Cannot be installed with PB3150, Caster Table Type M3 or Cabinet Type F.

One-Tray Paper Bank (PB3150)

Tray Capacity 550 sheets x 1 tray
Paper Size 7.25" x 10.5" to 12" x 18" (A5 – A3)
Paper Weight 14 – 80 lb. Bond (52 – 300 g/m²)
Dimensions (WxDxH) 23.1" x 27" x 4.7" (587 x 685 x 120 mm)
Must include Caster Table Type M3. Cannot be installed with PB3220 or Cabinet Type F.

Output Trays & Finisher Options

Internal Shift-Sort Tray (SH3070)

Tray Capacity 250 sheets (8.5" x 11" or smaller) (A4 – A5)
125 sheets (8.5" x 14" or larger) (B4 – A3)
Paper Size 5.5" x 8.5" to 12" x 18" (A5 – A3)
Paper Weight 14 – 80 lb. Bond (52 – 300 g/m²)
Cannot be installed with SR3220 Booklet Finisher, Internal Finisher or Punch Unit.

One-Bin Tray (BN3110)

Paper Size 5.5" x 8.5" to 12.6" x 17.7" (A5 – A3)
Paper Weight 14 – 80 lb. Bond (52 – 300 g/m²)
Tray Capacity 125 Sheets
BN3110 can also be installed with the Internal Finishers SR3130, SR3180 or SH3070.

250-Sheet Stapleless Stapler Internal Finisher (SR3180)

Paper Size 5.5" x 8.5" to 12" x 18" (A6 – A3)
Paper Weight 14 – 80 lb. Bond (52 – 300 g/m²)
Stack Capacity 250 sheets (8.5" x 11" or smaller) (A4)
125 sheets (8.5" x 14" or larger) (B4 – A3)
Staple Paper Size 8.5" x 11" to 11" x 17" (A4 – A3)
Staple Paper Weight 17 – 21 lb. Bond (64 – 80 g/m²)
Stapleless Capacity 2 – 5 sheets/set
Staple Positions Top, 1 Staple
Dimensions (WxDxH) 17.1" x 20.3" x 5.9" (435 x 515 x 150 mm)
SR3180 cannot be installed with the SR3220 Booklet Finisher, SR3130 Internal Finisher or the Internal Shift Tray SH3070.

500-Sheet Internal Finisher (SR3130)

Paper Size 5.5" x 8.5" to 12" x 18" (A6 – A3)
Paper Weight 14 – 80 lb. Bond (52 – 300 g/m²)
Stack Capacity 500 sheets (8.5" x 11" or smaller) (A4)
250 sheets (8.5" x 14" or larger) (B4 – A3)
Staple Paper Size 7.25" x 10.5" to 11" x 17" (A4 – A3)
Staple Paper Weight 14 – 28 lb. Bond (52 – 105 g/m²)
Staple Capacity 50 sheets (8.5" x 11") (A4)
30 sheets (8.5" x 14" or larger, and/or Mixed Sizes) (B4 – A3)

Staple Positions Dimensions (WxDxH)

Top, Bottom, 2 Staples
21.5" x 20.6" x 6.7" (546 x 523 x 170 mm)

Cannot be installed with the SR3220 Booklet Finisher, SR3180 Internal Finisher or the Internal Shift Tray SH3070.

2-/3-Hole Punch Unit (PU3040NA)

(Optional; Installs inside SR3130 Internal Finisher)
Punch Paper Sizes 7.25" x 10.5" to 11" x 17" (A4 – A3)
Punch Paper Weight 14 – 45 lb. Bond (52 – 169 g/m²)
The Internal Finisher SR3130 must be included to add this option.

1,000-Sheet Booklet Finisher (SR3220)

Paper Size Proof Tray: 5.5" x 8.5" to 12" x 18" (A6 – A3)
Shift Tray: 5.5" x 8.5" to 12" x 18" (A6 – A3)
Booklet Tray: 8.5" x 11" to 12" x 18" (A4 – A3)
Paper Weight Proof Tray: 14 – 45 lb. Bond (52 – 169 g/m²)
Shift Tray: 14 – 80 lb. Bond (52 – 300 g/m²)
Booklet Tray: 14 – 28 lb. Bond (52 – 105 g/m²)
Stack Capacity Proof Tray: 250 sheets (8.5" x 11" or smaller) (A4); 50 sheets (8.5" x 14" or larger) (B4 – A3)
Shift Tray: 1,000 sheets (8.5" x 11" or smaller) (A4); 500 sheets (8.5" x 14" or larger) (B4 – A3)
Booklet Tray: 20 Sets (2 – 5 sheets), 10 Sets (6 – 10 sheets) & 7 Sets (11 – 15 sheets)
Staple Capacity Normal Staple: 50 sheets (8.5" x 11") (A4); 30 sheets (8.5" x 14" or larger) (B4 – A3)
Saddle Stitch 15 sheets

Staple Paper Size

Normal Staple: 8.5" x 11" to 12" x 18" (A4 – A3)
Saddle Stitch: 8.5" x 11" to 12" x 18" (A4 – A3)
Staple Paper Weight 14 – 28 lb. Bond (52 – 105 g/m²)
Staple Positions Top, Bottom, 2 Staples, Booklet
Dimensions (WxDxH) 22.2" x 24.4" x 37.8" (563 x 620 x 960 mm)

Requires installation of Bridge Unit BU3070.
The PB3220 Two-Tray Paper Bank must be included to add this option.
Cannot be installed with the PB3150.

2-/3-Hole Punch Unit (PU3050NA)

(Optional; Installs inside SR3220 Finisher)
Punch Paper Sizes 5.5" x 8.5" to 11" x 17" (A5 – A3)
Punch Paper Weight 14 – 68 lb. Bond (52 – 256 g/m²)
The SR3220 1,000-Sheet Booklet Finisher must be included to add this option.

Additional Accessories

Banner Paper Guide Tray Type M19, Caster Table Type M3, Bridge Unit BU3070, Cabinet Type F, Camera Direct Print Card Type M19, Card Reader Bracket Type 3352, Extended USB Board Type M19, External Keyboard Bracket Type M19, Fax Connection Unit Type M19, Fax Memory Unit Type M19 64MB, File Format Converter Type M19, G3 Interface Unit Type M19, IEEE 802.11a/g/n Interface Unit Type M19, IEEE 1284 Interface Board Type M19, Imageable Area Extension Unit Type M19, Key Counter Bracket Type M3, Memory Unit Type M19 4GB, NFC Card Reader Type M19, OCR Unit Type M13, Optional Counter Interface Unit Type M12, Postscript3 Unit Type M19, Power Filter ESP XG-PCS-15D, Smart Card Reader Built-in Unit Type M19, XPS Direct Print Option Type M19, Fax Option Type M19

Some options may not be available at the time of market release.

Specifications are subject to change without notice.

For maximum performance and yield, we recommend using genuine Ricoh parts and supplies.

RICOH
imagine. change.

www.ricoh-usa.com

Ricoh USA, Inc., 70 Valley Stream Parkway, Malvern, PA 19355, 1-800-63-RICOH

Ricoh® and the Ricoh logo are registered trademarks of Ricoh Company, Ltd. All other trademarks are the property of their respective owners ©2017 Ricoh USA, Inc. All rights reserved. The content of this document, and the appearance, features and specifications of Ricoh products and services are subject to change from time to time without notice. Products are shown with optional features. While care has been taken to ensure the accuracy of this information, Ricoh makes no representation or warranties about the accuracy, completeness or adequacy of the information contained herein, and shall not be liable for any errors or omissions in these materials. Actual results will vary depending upon use of the products and services, and the conditions and factors affecting performance. The only warranties for Ricoh products and services are as set forth in the express warranty statements accompanying them.

R3705-C2

RICOH @Remote



Multifunction Color

RICOH MP C307 MP C407

✔ Printer ✔ Copier ✔ Facsimile ✔ Scanner

RICOH
imagine. change.



MP C307

31/31
cpm Black & white
/Full color

MP C407

42/36
cpm Black & white
/Full color

Turn limited space into an advantage

Improve your workgroup's productivity and economics by keeping more jobs in-house with the RICOH® MP C307/MP C407 color laser multifunction printers (MFPs). With all-in-one print, copy, scan, fax, local storage and cloud capabilities, the MP C307/MP C407 become your workgroup's Information Management Hubs—where print and digital documents come together as unified workflows to help streamline collaboration and more. Larger workgroups that generate higher volumes of output may prefer the faster MP C407 with “workhorse” performance, speedily powering through large, graphics-intensive files.

- MP C307: 31 ppm (Color), 31 ppm (B&W)
- MP C407: 36 ppm (Color), 42 ppm (B&W)
- Print, copy, fax and scan (up to 80 images per minute)
- Support sheet sizes up to 8.5" x 14"
- Safeguard proprietary information from unauthorized access and erase or encrypt information on the local hard drive



Efficient workgroups

Get more work done in less time—even when space is limited

Increase your productivity

While the MP C307 /MP C407 MFPs may not take up much space, they pack in many robust features to help you increase productivity with fast print and copy speeds. Save valuable time waiting for warm-up and jobs to start thanks to fast first-print times for both color and black-and-white output. Ultimately, speed means little if your MFP isn't backed up by enough processing power to avoid user frustration. The MP C307/MP C407 come with a standard Intel 1.46 GHz processor and 2 GB RAM to easily handle large files and process multiple jobs at once.



Digitize documents at the speed of business

Scan two-sided documents with the MP C307/MP C407's standard single-pass document feeders at speeds up to 80 ipm and 600 dpi resolution, freeing you to digitize large volumes of documents. Standard on both MFPs, RICOH® PageKeeper* helps to keep scanning jobs running smoothly as it detects—and stops—your MFP from feeding multiple sheets. Types of scanning include: Scan-to-Email (SMTP/POP3), Scan-to-Folder (SMB/FTP), Scan-to-Media (USB/SD card), plus Network TWAIN scanning. Now, you can efficiently store and share print documents as easily as digital information—in PDF, TIFF, JPEG and other common formats. Never lose a document again with optional OCR scanning, allowing you to create searchable PDFs.

*PageKeeper models only.



Bring color documents to life

Create professional-looking documents with print-shop quality color in-house when you need them. Standard PostScript helps to transform your documents with colors that appear more brilliant and text that reads crisper and clearer. Impress your customers with proposals, presentations and other vital documents in 1200 x 1200 dpi resolution.



Streamline everyday tasks

Save time and automate repetitive tasks with the RICOH Smart Operation Panel (SOP)—standard on the MP C307/MP C407. The SOP's large 10.1" color touch screen offers intuitive, tablet-like functionality, even allowing you to customize shortcuts and prioritize apps that help to make your work life more efficient. Speed through jobs with one-touch convenience, and watch how-to videos for quick self-help.





Efficient workplaces

Embrace mobile innovation

Thrive in the “everywhere workplace” as you connect your mobile devices to the MP C307/MP C407. When your mobile devices are connected to the same network as the MP C307/MP C407, use AirPrint® to connect iOS devices or Mopria™ for Android devices. With the RICOH Smart Device Connector App, connect to the MP C307/MP C407 and initiate print, scan, copy and fax jobs right from your smart device. Also print files on your device(s) or cloud storage, and scan directly to cloud storage. Users can connect via NFC or QR code to the MP C307/MP C407 without needing to go onto the corporate network.



Support diverse media and large workloads

Maximize the value of your investment as you take on a wide array of print jobs and easily scale for increased output with the MP C307/MP C407. Instead of interrupting workflows to refill paper trays, simply add two optional 500-Sheet paper feed units, expanding the standard 350-Sheet capacity up to 1,350 sheets. Support thick media up to 120 lbs. index and large-format media up to 23.6” via the bypass tray. Also print on letterhead, transparencies and labels.



Safeguard sensitive information

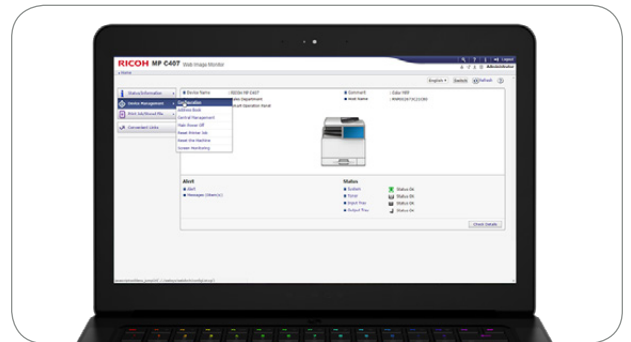
Be proactive about avoiding data breaches that could hurt you and your customers. As your workgroup’s information management hub, the MP C307/MP C407 provides crucial safeguards to help protect sensitive information from unauthorized access, data leakage and network security threats. SSL/TLS and IP address filtering help to create secure connections and authenticate users. Also manage user access with an NFC card reader plus ensure critical documents are secure by using Locked Print, which requires a user to enter a passcode before the job is printed. Secure local storage includes standard data encryption and Data Overwrite Security System (DOSS), which overwrites latent data on the hard disk drive.



Efficient workplaces

Simplify device management

Manage the MP C307/MP C407 from almost anywhere via utilities from Ricoh such as Web Image Monitor and @Remote. With Web Image Monitor, your IT team can remotely configure the MFPs and painlessly change security settings through guided pop-up dialog boxes. In the event of a power outage, you can get back to business quickly with Remote Power-On. Also manage user access and set user permissions. Maximize uptime and efficiency with auto-notifications when supplies like paper need to be replenished.



More workflow enhancements

Take your efficiency to another level with unique features on the MP C307/MP C407 to help you eliminate waste and finish jobs faster. Store up to 3,000 documents—from forwarded faxes to frequently used forms and documents—on the standard document server. Now, print on-demand rather than pile up wasteful pre-printed forms. Also, search and view locally stored documents from your desktop. The ID Card Copy feature makes it easy to copy the front and back of identification and insurance cards onto a single sheet of paper.



Low environmental impact

Committed to reducing your environmental impact, the MP C307/MP C407 are EPEAT® Gold rated* and ENERGY STAR® certified, and offer a low Typical Electricity Consumption (TEC) of just 1.2 KWh/week (1.8 KWh/week for the MP C407). And with an 8-second recovery from Sleep Mode, the MP C307/MP C407 help your office save on energy costs without slowing down. Reduce costs further by using less paper with standard two-sided printing. Recycle toner cartridges through Ricoh's Cartridge Return Program to help maintain a low environmental impact.

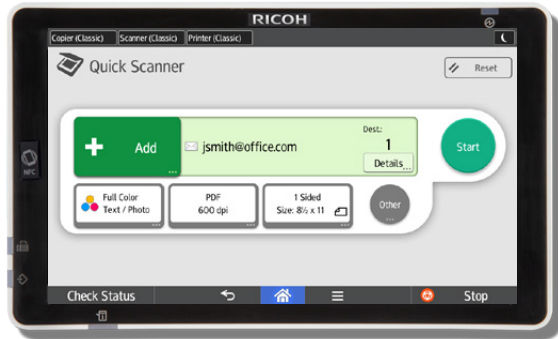


*EPEAT rating is applicable only in the USA.

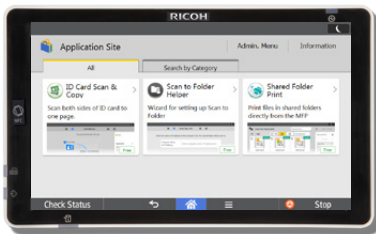
Own your workstyle



1



2



3



4



5

Just because you move among different workgroups or offices, it doesn't mean you can't bring your workstyle with you. Enjoy a consistent experience anywhere you work on an MP C307/MP C407 or another Ricoh device with the

RICOH Smart Operation Panel — and benefit from the same apps and enterprise solutions for smarter automation, information security and more.

- 1 Make your MFP work for you:** The Smart Operation Panel is your portal to productivity. On the 10.1" touch screen, find information quickly and accelerate workflows with shortcuts—including personalizing three persistent shortcuts at the top left of the panel. Simplify document creation with convenient previews in which you can configure detailed layout options. Additionally, change the look and layout of your SOP's user interface per your preferences.
- 2 Simplified Quick Screens:** Quick User Interface screens provide access to basic features on one screen to help simplify print, copy, scan and fax jobs. Large icons provide a user-friendly interface for novice or one-time users as well as the ability to preview your job prior to transmission for accuracy.
- 3 Application Site:** Select easy-to-use apps from the convenient RICOH Application Site to automate many of your most time-consuming tasks. Place them on the home screen as easily identifiable one-touch shortcuts. With a single tap, you can add specific features to copy, print, scan and fax with less hassle and fewer delays.
- 4 How-to-videos:** Access an extensive library of self-help videos directly from the Smart Operation Panel. The easy-to-follow tutorials guide you through basic MFP operations, troubleshooting, customizing controls and more to help you boost productivity and standardize the user experience.
- 5 Web browser:** Access websites directly from your MFP as though you were using a personal smart device. Convert a web page into a hardcopy document in seconds.

Workstyle innovation for workgroups



Explore the key features of the MP C307/MP C407 that help to meet the requirements of your workgroup's changing workstyle — from affordable in-house high-resolution

color printing to mobile printing and high-speed document scanning for cloud services.

- 1 Smart Operation Panel (SOP):** Run solutions-focused smart apps on the Android-based 10.1" Smart Operation Panel (SOP) with a user interface that's as easy to use as a personal smart device. The SOP also features a USB and SD card slots for scanning to and printing from portable media.
- 2 Single Pass Document Feeder (SPDF) :** Get high-resolution scanning with speeds up to 80 ipm by simultaneously scanning both sides of documents up to 8.5" x 11".
- 3 NFC user authentication:** Embedded software for Near Field Communication (NFC) user authentication is standard. With the optional NFC card reader, you can quickly authenticate via NFC-enabled proximity cards.
- 4 Paper-feeding capacity:** Expand the standard 350-sheet capacity to 1,350 sheets from four independent paper supply sources with the addition of two optional 500-Sheet Paper Feed Units. Bypass tray holds up to 100 sheets, supporting thick media up to 120 lbs. index and large-format media up to 23.6".
- 5 Paper output capacity:** Standard output capacity of 100 sheets, expandable to 200 sheets with the addition of the optional 100-sheet One Bin Tray.

The One Bin Tray offers the added advantage of separating print and copy or copy and fax output for faster, easier document retrieval.

- 6 PageKeeper:** A multi-feed detection sensor that automatically stops a scanning job when more than one sheet is fed through the single pass document feeder. Avoid delays and errors with a more reliable scanning workflow.
- 7 Mobile printing:** It's easy to connect your mobile device to the MP C307/MP C407 and stay productive while on the move. Connect your NFC-enabled device by simply placing it near the attached NFC tag. For added functionality download the RICOH Smart Device Connector app and connect quickly to the MFP using a QR code – no need to access the network. You'll be able to initiate print, copy, scan and fax jobs right from your mobile device. And when network access is available, use AirPrint® to connect iPhones and iPads and Mopria™ for Android-based smartphones and tablets.
- 8 Powerful Controller and local storage:** Ricoh's next generation architecture controller equipped with a powerful Intel 1.46 GHz processor and 2 GB standard RAM process complex files quickly and keep pace with your busy work day. Standard 320 GB HDD provides a Document Server to store inbound faxes and frequently used forms.

RICOH MP C307/MP C407

SYSTEM SPECIFICATIONS



General Specifications

Configuration	MP C307; 417839 MP C407; 417847 MP C307 with PageKeeper; 418044 MP C407 with PageKeeper; 418045
Scanning Element	One-dimensional solid scanning through CCD; CIS sensor scans backside of SPDF
Printing Process	Dry electrostatic transfer system with dual component development; 4-drum method
System Memory	2 GB (RAM)
Output Speed (LT)	MP C307: B&W – 31 ppm; Full Color – 31 ppm MP C407: B&W – 42 ppm; Full Color – 36 ppm
First-Print Time (LT)	MP C307: B&W – less than 7.2 seconds; Full Color – less than 11 seconds MP C407: B&W – less than 6.2 seconds; Full Color – less than 10.5 seconds
Recovery Time from Sleep Mode	MP C307: 8.2 seconds MP C407: 8 seconds
Copy Resolution	600 x 600 dpi (Print: 1,200 x 1,200 dpi)
Exposure Adjustment	Manual and automatic
Multiple Copies	Up to 999
Document Feeder	Single Pass Document Feeder (SPDF) (Standard) 50 sheets (SPDF)
Original Capacity	50 sheets (SPDF)
Paper Sizes	Standard Tray: 5.5" x 8.5" to 8.5" x 11" Optional Trays: 5.5" x 8.5" to 8.5" x 14" Bypass Tray: 3.0" x 5.4" to 8.5" x 23.6" Duplex Unit: 5.5" x 8.5" to 8.5" x 14"
Paper Weights	Standard Trays: 16 – 43 lb. Bond (60 – 163 g/m ²) Optional Trays: 16 – 43 lb. Bond (60 – 163 g/m ²) Bypass Tray: 16 – 58 lb. Bond (60 – 220 g/m ²) Duplex Unit: 16 – 43 lb. Bond (60 – 163 g/m ²)
Exposure Glass	Up to 8.5" x 14"
Input Capacity	Standard: 250 sheets + 100-Sheet Bypass Tray Optional: 500 sheets x 1 or 2 Trays
Output Capacity	Maximum: 1,350 sheets Standard: 100 sheets Optional: 200 sheets (total) with One Bin Tray
Paper Types	Plain, Recycled, Colored, Letterhead, Preprinted, Bond, Card Stock, Special, Coated, Waterproof, Back Copied, Thick*, OHP (Transparency)*, Envelopes*, Label Stock*
Auto Duplex	Standard
Zoom	25% to 400% in 1% increments
Preset Reduction and Enlargement Ratios	65%, 78%, 93%, 100%, 129%, 155%
Dimensions (WxDxH)	19.6" x 23.0" x 20.1" (498mm x 585mm x 510mm)
Weight	Less than 101.4 lbs (46 kg)
Power Requirements	120–127V, 60Hz, 10A
Power Consumption	Less than 1.3 KW (max.); 0.81 W (sleep mode)
TEC**	MP C307: 1.2 kWh/week MP C407: 1.8 kWh/week
Standard Features	Document Server, Java™, Poster Copy, ID Card Copy, Auto Tray Switch, Auto Start, Auto Off Timer, Energy Saver Timer, Color Balance Adjustment, Color Balance Program, Auto Color Calibration, Combine Copy, Electronic Sort, Photo Mode, Series Copy, Job Programs, User Codes (1,000), Simplified Display, Login/Logout Button, Eco-friendly Indicator

*Bypass Tray only.

**Typical Electricity Consumption by ENERGY STAR® Program.

Printer Specifications

CPU	1.46 GHz Intel
Memory Capacity	2 GB
Hard Disk Drive	320 GB
Page Description Languages	Standard: PCL5c/6, PostScript 3, PDF Direct Optional: Adobe® PostScript®3™, PDF Direct, XPS Direct Print 1200 x 1200 dpi
Maximum Print Resolution	
Standard Interfaces	Ethernet (10BASE-T/100BASE-TX/1000BASE-T), USB 2.0 (Type A), SD Card Slot
Optional Interfaces	Wireless LAN IEEE 802.11a/b/g/n and IEEE 1284/ECP, USB 2.0 Type B TCP/IP (IPv4, IPv6) Windows Vista/7/8/8.1/10/Server 2008/Server 2008R2/Server 2012/Server 2012R2; UNIX Filters for Sun Solaris 9/10; HP-UX 11.x/11v2/11v3; Red Hat® Linux Enterprise V4, V5, V6; SCO OpenServer 5.0.7/6.0; IBM AIX Version 5L, 5.3, 6.1, 7.1; SAP R/3, device type: barcode and OCR package; Mac OSX 10.8 or later, Citrix® XenApp 6, 5+, Xen Desktop 7.0+; IBM iSeries/AS/400 — using OS/400 host print transform
Network Protocols	
Network Operating Systems	@Remote, Device Manager NX, Web Image Monitor
Utilities	Media Direct Print (Print-from USB/SD), Sample/Locked/Hold/Scheduled/Stored Print, Banner Page Print, Poster Print, Unauthorized Copy Control, User ID, User Code, Classification Code, Layout (N-up), Watermark, Collate, CLP Simulation, Bonjour Support, PDF Direct Print, Windows Active Directory Support, DDNS Support, PCL Resident Font Adoption, Universal Driver, WS Printer, 1200 dpi Support, XPS Support, Auto Job Promotion, Mail-to-Print
Other Printer Features	

Scanner Specifications

Scanning Speed	80ipm @ 300dpi full color and B&W Duplex 100, 200, 300, 400, 600 dpi
Scanning Resolution	Main: 8.5" (216 mm) Sub: 14.0" (356 mm)
Scan Area	B&W: TIFF (MH, MR, MMR, JBIG2), Grayscale Full-Color: JPEG
Compression Method	B&W: Text, Text/Line Art, Text/Photo, Photo, Grayscale Full-Color: Text/Photo, Glossy Photo, Standard Auto Color Select
Scan Mode	Ethernet 10BASE-T/100BASE-TX/1000BASE-T, USB Type A and SD Card via Smart Operation Panel
Standard Interfaces	Wireless LAN (IEEE 802.11a/b/g/n) Single/Multi Page TIFF, Single/Multi Page PDF, Single/Multi Page High Compression PDF, Single/Multi Page PDF/A and Single Page JPEG
Optional Interfaces	Scan-to-Email (POP, SMTP, TCP/IP); Scan-to-Folder (SMB/FTP); Network TWAIN Scanning; Scan-to-Media (USB/SD)
File Formats	WS-Scanner, Scan to Email/SMB/ FTP/ URL, Scanned File Naming, Scan File Type Selection, LDAP Support, Preview Before Transmission, PDF Encryption, Drop Out Color Send, TWAIN Scan, Universal Send, PDF/Digitally Signed PDF/PDF/A, Distributed Scan Management, PageKeeper
Scan Modes Supported	
Standard Features	

Fax Specifications

Type	ITU-T CCITT G3
Circuit	PSTN, PBX
Resolution	200 x 100 dpi, 200 x 200 dpi
Modem Speed	33.6K – 2,400 bps with Auto Shift Down
Compression Method	MH, MR, MMR, JBIG
Scan Speed	30 pages per minute
Transmission Speed	Approx. 2 seconds/page (200 x 100 dpi, JBIG)
Memory	4 MB (approx. 320 pages)
Memory Backup	1 hour
Quick Dial	2,000 numbers
Group Dials	100 groups (max. 500 numbers per group)
Standard Features	Detection of Misplaced Documents, Double Check Destination Address, Direct SMTP, Serial Broadcasting, Fax Forward to Email/Folder, Internet Fax (T.37), IP Fax (T.38), LAN Fax, Remote Fax (optional), Paperless Fax, LDAP Support, Universal Send

Hardware Options

Paper Feed Unit PB1080	
Paper Size	5.5" x 8.5" SEF, 8.5" x 14" SEF
Paper Weight	16 – 43 lb. Bond (60 – 163 g/m ²)
Paper Capacity	500 sheets x 1 or 2 trays
Dimension (WxDxH)	19.6" x 21.7" x 5.9" (498 mm x 552 mm x 150 mm)
Weight	23 lbs./10.4 kg.
1 Bin Tray BN1030	
Paper Size	5.5" x 8.5" SEF to 8.5" x 14" SEF
Paper Weight	16 – 43 lb. Bond (60 – 163 g/m ²)
Paper Capacity	200 sheets (total output with standard tray)

Additional Options

Low Cabinet, Medium Cabinet, High Cabinet, Fax Connection Unit Type M28, XPS Direct Print Option Type M28, IEEE 1284 Interface Board Type M19, IEEE802.11 IEEE 802.11a/g/n Interface Unit Type M19, File Format Converter Type M19, NFC Card Reader Type M13, OCR Unit Type M13, Embedded HotSpot Type S, PostScript Unit Type M28, 1-Bin Tray BN1030, Extended USB Board Type M19, ESP XG-PC-515D Power Filter, ESP S1 Power Filter

Security

Network User Authentication, IP Address Filtering, HDD Data Overwrite, HDD Encryption, Copy Guard Security, Secure Print, Encrypted Secure Print, Encrypted PDF Mode, Digitally Signed PDF, IP Sec, SSL/TLS, SNMPv3, SMTP over SSL, Security for IEEE 802.11/w, IPv6, Transport Layer Security

Specifications are subject to change without notice. Some features may require additional options.

For maximum performance and yield, we recommend using genuine Ricoh parts and supplies.

RICOH
imagine. change.

www.ricoh-usa.com

Ricoh USA, Inc., 70 Valley Stream Parkway, Malvern, PA 19355, 1-800-63-RICOH
Ricoch® and the Ricoh logo are registered trademarks of Ricoh Company, Ltd. All other trademarks are the property of their respective owners ©2017. Ricoh USA, Inc. All rights reserved.
The content of this document, and the appearance, features and specifications of Ricoh products and services are subject to change from time to time without notice. Products are shown with optional features. While care has been taken to ensure the accuracy of this information, Ricoh makes no representation or warranties about the accuracy, completeness or adequacy of the information contained herein, and shall not be liable for any errors or omissions in these materials. Actual results will vary depending upon use of the products and services, and the conditions and factors affecting performance. The only warranties for Ricoh products and services are as set forth in the express warranty statements accompanying them.

R3833-C

Digital Full Color Multi Function Printers

RICOH
MP C3004
MP C3504
MP C4504
MP C6004
SERIES

Copier Printer Facsimile Scanner

RICOH
imagine. change.



RICOH
MP C3004SP

30 Black & white
cpm Full color

RICOH
MP C3504SP

35 Black & white
cpm Full color

RICOH
MP C4504SP

45 Black & white
cpm Full color

RICOH
MP C6004SP

60 Black & white
cpm Full color

We're reinventing office life with Workstyle Innovation Technology.

RICOH MP C3004/C3504/C4504/C6004 SERIES



Note: Photo shows the Ricoh MP C3004 SP with the optional PB3160 Feed Table. Note: Screen display shown here is a composite image.

Ricoh delivers a better way of working. All you need is one of our new MFPs.

As our world keeps on changing, every office is evolving its own working style. To keep pace with new needs which constantly emerging, our MFPs have evolved even further.

The new MFPs offer intuitive controls, and a user interface that streamlines your workflow. A wide range of apps to suit many different working styles. And support for new ways to leverage your business data, even when you're away from the office.

Advanced features enhance usability and make your working life easier. Designed with tomorrow's workplace in mind, these new models deliver a better way of working. Packed with all the highly-evolved functionality needed for today's business, they're ready to transform your office.

■ User-friendly

Power at your fingertips



The user interface is simple and intuitive. From the wide range of apps provided, choose the ones that suit your way of working. As soon as you touch the screen, you'll find yourself working smarter.

■ Support the way you work today

Freedom to work remotely



Using cloud connectivity, you can view documents remotely on your smart device, and share information effectively through RICOH MFPs. Today's new, location-independent working styles, empowered.

■ Comfortable design

An enhanced working environment



Equipped with Human detection sensor, RICOH MFPs are ready to work instantly at the moment when you approach. With Ricoh's unique noise-reduction technology, they make your office a smoother, better place to work.

Innovating your workplace.

We want to create real functionality and a seamless user experience. And thanks to a range of helpful features – including the ability to securely print from mobile devices – our main innovation is perhaps the sheer variety of apps and customisable solutions that will really make a difference to your day.

A whole new world of Apps.

If you're looking to customise your Smart Operation Panel, you can download and install additional apps from our Application Site – as well as update apps, firmware or uninstall apps. And you can do all this without accessing our main site, so work doesn't get interrupted.



Seamless processing.

The new Intel-based controller greatly enhances printing and scanning of complex documents and reduces overall processing time. And when it comes to print and image quality, RICOH MFPs achieve vibrant results with the precision of 1200 x 1200 dpi and print speeds from 30-60 ppm. For more demanding graphic environments, a Fiery controller option is available to meet precise colour matching and design requirements.



Technology that flows.

Where connectivity meets function.

Your business is unique, so within this range we offer different paper capacity options to meet the needs of diverse workgroups – and offer the flexibility to load multiple stocks and sizes at the same time. But if you're looking for something that's unique to the market, our 1000-sheet Hybrid Finisher – stapled or staple-less – is an all-in-one offering that harnesses new ways to achieve the professional results you want.



Right first time.

These feature-rich MFPs also come standard with Automatic Reverse Document Feeders and with the Single Pass duplex feeder, the paper passes the feeder once, so you can streamline your workflow and increase your efficiency via performance and easy usability. In fact, you'll find yourself becoming much more productive while producing professional documents that you never thought possible.

*Only applied to MP C4504SP & MP C6004SP



More output options.

So you can increase your productivity with internal and external finishers like the booklet and hybrid finisher giving you a stapled finish option. But did you know you can also optimise your professional output with banner-print capability too? Virtually anything's possible within this range of MFPs.





More efficient. More reliable.

Ready when you are.

Human Detection Sensor means these devices jump into to action when they see you approaching so you not only get instant availability, but you also spend less time waiting for the machine to warm up – which can improve overall productivity.



Save on maintenance.

Real-time jam animation speeds up troubleshooting, while an innovative mechanism ensures smooth paper loading. And, with improved service support and remote management capabilities, trouble-shooting is virtually effortless.



More features. Less impact.

We want you to get the most value for money without compromising on output. That's why these MFPs offer you high performance combined with a low environmental impact. And innovations like staple-less finishing, a 0.5 second recovery from sleep mode, and the lowest TEC values on the market, result in lower energy consumption, helping you to save money on energy costs and reduce your overall TCO.



Your digital workflow solution



- 1 10.1 inch Smart Operation Panel
- 2 High paper capacity (max. 4,700 sheets)
- 3 1,000 sheet hybrid finisher
- 4 Built-in duplex unit

- 5 Human Detection Sensor
- 6 Single Pass Duplex Feeder
- 7 Intel processor inside

RICOH MP C3004SP / MP C3504SP / MP C4504SP / MP C6004SP

MAIN SPECIFICATIONS

GENERAL		PAPER HANDLING	
Warm-up time:	25/25/24/24 seconds	Recommended paper size:	SRA3, A3, A4, A5, A6, B4, B5, B6
First output speed:	Full colour: 7.1/7.1/5.7/4.5 seconds B/W: 4.6/4.6/4.0/3.1 seconds	Paper input capacity:	Standard: 1,200 sheets Maximum: 4,700 sheets
Continuous output speed:	30/35/45/60 pages per minute	Paper output capacity:	Maximum: 1,625/1,625/3,625/3,625 sheets
Memory:	Standard: 2 GB Maximum: 4 GB	Paper weight:	52 - 300 g/m ²
HDD:	250/250/320/320 GB	ECOLOGY	
Dimensions (W x D x H):	With ARDF: 587 x 685 x 913 mm With SPDF: 587 x 685 x 963 mm	Power consumption:	Maximum: 1,700/1,700/1,850/1,850 W Ready mode: Less than 47.3/47.3/55.1/55.1 W Sleep mode: Less than 0.93/0.93/0.89/0.89 W TEC (Typical Electricity Consumption): 1.2/1.3/1.8/2.7 kWh
Weight:	101.3/101.3/103.4/103.4 kg	OPTIONS	
Power source:	220 - 240 V, 50/60 Hz	ADF handle, Platen cover, 1 x 550-sheet paper tray, 2 x 550-sheet paper tray, 2,000-sheet large capacity tray, 1,500-sheet side large capacity tray, Bridge unit, 1,000-sheet Hybrid finisher, 3,000-sheet finisher, Internal finisher, Internal finisher with stapleless stapler, 1,000-sheet booklet finisher, 2,000-sheet booklet finisher, Punch kits, Internal shift tray, 1-bin tray, Side tray, Caster table, Cabinet, Bi-directional IEEE 1284, Wireless LAN (IEEE 802.11a/g/n), Bluetooth, Pictbridge, PostScript3, IPDS unit, Counter interface, File format converter, Key counter bracket, Card reader bracket, Data Overwrite Security Unit (Certified version), Fax Connection Unit, Fax marker, Fax memory, Fax option, Unicode Font Package for SAP, OCR Unit, Smart Card Reader Built-in Unit, SRA3 unit, XPS direct print, Enhanced security HDD, Keyboard bracket, NFC Card Reader, Font SD card, USB Device Server, Banner paper tray guide, G3 Interface unit, EFI colour controller, Extended USB board, 4GB Memory unit, Bluetooth	
COPIER		Please note that some options may only be available for certain models in the range. For availability of models, options and software, please consult your local Ricoh supplier.	
Copying process:	Dry Electrostatic Transfer System with Dual component Development: 4-Drum method	SCANNER	
Multiple copying:	Up to 999 copies	Scanning speed:	ARDF: Max. 80 originals per minute SPDF: Max. 110 (simplex)/180 (duplex) originals per minute
Resolution:	600 dpi/4 bit	Resolution:	Maximum: 1,200 dpi
Zoom:	From 25% to 400% in 1% steps	Original size:	A3, A4, A5, B4, B5
PRINTER		Bundled drivers:	Network TWAIN
Printer language:	Standard: PCL5c, PCL6(XL), PDF Option: XPS, Adobe® PostScript®3™, IPDS, PictBridge	Scan to:	E-mail, Folder
Print resolution:	Maximum: 1,200 x 1,200 dpi/2bit	FAX (OPTION)	
Interface:	Standard: SD slot, USB Host I/F, Ethernet 10 base-T/100 base-TX/1000 base-T Option: Wireless LAN (IEEE 802.11a/b/g/n), Bluetooth, USB Server for Second Network Interface, Bidirectional IEEE 1284/ ECP, USB 2.0 (Type B)	Circuit:	PSTN, PBX
Mobile printing capability:	Apple AirPrint™	Compatibility:	ITU-T (CCITT) G3
Windows® environments:	Windows® Vista/7/8/8.1/10, Windows® Server 2008/2008R2/2012/2012R2	Resolution:	Standard: 8 x 3.85 line/mm, 200 x 100 dpi, 8 x 7.7 line/mm, 200 x 200 dpi Option: 8 x 15.4 line/mm, 400 x 400 dpi, 16 x 15.4 line/mm, 400 x 400 dpi
Mac OS environments:	Macintosh OS X Native v10.7 or later	Compression method:	MH, MR, MMR, JBIG
UNIX environments:	UNIX Sun® Solaris, HP-UX, SCO OpenServer, RedHat® Linux Enterprise, IBM® AIX	Transmission speed:	G3: 2 second(s) (200 x 100 dpi, JBIG), 3 second(s) (200 x 100 dpi, MMR)
SAP® R/3® environments:	SAP® R/3®	Modem speed:	Maximum: 33.6 Kbps

RICOH
imagine. change.

www.ricoh-ap.com

RICOH ASIA PACIFIC PTE LTD

103 Penang Road #08-01/07, VISIONCREST Commercial, Singapore 238467
Phone: +65 6830 5888, Fax: +65 6830 5830

All brand and/or product names are trademarks of their respective owners. Specifications and external appearance are subject to change without notice. The colour of the actual product may vary from the colour shown in the brochure. The images in this brochure are not real photographs and slight differences in detail might appear. Copyright © 2015 Ricoh Asia Pacific Pte Ltd. All rights reserved. This brochure, its contents and/or layout may not be modified and/or adapted, copied in part or in whole and/or incorporated into other works without the prior written permission of Ricoh Asia Pacific Pte Ltd.



RICOH @Remote

Digital B&W Multifunction Printer

RICOH MP 4055SP MP 5055SP MP 6055SP

Copier Printer Facsimile Scanner

RICOH
imagine. change.



RICOH
MP 4055SP

40
ppm Monochrome

RICOH
MP 5055SP

50
ppm Monochrome

RICOH
MP 6055SP

60
ppm Monochrome

Put productivity on display

You face difficult choices every day. Fortunately, they're a lot easier to make when you have the right information. Choose the RICOH® MP 4055SP/ MP 5055SP/ MP 6055SP to print, copy, scan and fax important notes, brochures, invoices, contracts and other documents quickly and economically. With the advanced 10.1" Smart Operation Panel, you can pinch, swipe and scroll like you do on your smartphone or tablet to check and adjust settings, automate tasks and distribute information with speed and precision. Select from multiple finishing options to add a professional touch to documents while eliminating outsourced printing costs. Set shortcuts to expedite everyday jobs. Print and distribute files while on the move using your personal mobile device. Valuable ideas are safe with user authentication and other security capabilities. Nevertheless, the versatile all-in-one MFP is designed specifically to use less energy, which helps reduce costs.

- Print up to 60 black-and-white prints/copies per minute
- Use the Smart Operation Panel to copy, print, scan and fax quickly
- Create automated workflows and shortcuts to simplify everyday tasks
- Expedite sorting, stapling, folding and hole punching via a wide range of finishing options
- Share information from your smartphone or tablet using the MFP



Create an easier way to work

Deliver on good information

Print up to 60 black-and-white pages per minute (ppm) to get the word out quickly. Use the Single Pass Document Feeder to transform one- or two-sided originals into digital files and distribute them via Scan-to options, store up to 3,000 frequently used forms on the embedded Document Server to keep the latest versions readily accessible. Fax and Optical Character Recognition (OCR) are available as Options.



Connect with mobility

Create workplace freedom without compromising productivity. Simply download the RICOH Smart Device Connector app on your Android® or iOS® devices to copy, scan, fax and print. Sharing & retrieving information directly from cloud storage applications, such as Google Drive™, Box™ or Dropbox™ and print it. Simple connection via either Bluetooth or Near Field Communication (NFC) tag. Printing from AirPrint and Mopria are available too.



Discover more ways to impress

Producing crisp images with smooth gradations and precise text at up to 1,200 dpi resolution on a wide range of document types. Choose between the icon-driven drivers to easily make subtle image changes prior to printing. These new devices now include standard emulation PostScript and 1.46 GHz Intel® controller to help improve productivity and perform multiple task quickly and simultaneously. You may expand paper capacity up to 4,700 sheets.



Help reduce environmental impact

The MP 4055SP/ MP 5055SP/ MP 6055SP is easy on your workload as well as budget. Take advantage of its many eco-friendly features. The MFP is ENERGY STAR® certified with multiple energy-saving options available. For instance, you can schedule the MFP to power down when the office is empty and keep duplex printing as the default to reduce paper costs.



Press ahead with customized convenience

Expand capability with Apps

Customize your own personal workflows on the Smart Operation Panel and reduce repetitive manual steps that can impede the flow of information. Download easy-to-use workflow apps from the RICOH Application Site to add specific features or single-function capabilities to simplify how you perform everyday tasks. For example, Conference Concierge app will guide you step-by-step instructions on how to create supporting materials in the right format for your next big event.



Improve workflow with software solution

There's always an easier way. Add Ricoh and third-party solutions to simplify complex workflows and automate many of your repetitive everyday tasks. With RICOH GlobalScan™ NX solution, you can digitize hardcopy originals and distribute them anywhere almost instantly with minimal effort. Use RICOH Streamline NX® solution for document creation, storage, retrieval, distribution, card authentication and more. Also RICOH Device Manager NX Accounting and issue chargebacks for individuals and workgroups with incredible speed and accuracy.



Tap into critical information

Use the 10.1" intuitive Smart Operation Panel to toggle between jobs and tasks quickly and conveniently like smart mobile devices. Designed with RICOH Workstyle Innovation Technology, the touchscreen offers multiple user interfaces that display critical information in a grid-like layout. Simply tap on any icon to access data, change settings, and perform tasks easily. You can print web pages, images and documents as PDFs from web browser at any time.



Be secure with your information

Reduce risks with a wide range of security controls. Track users and their activity with User Authentication. Have every person enter a passcode or swipe an ID card by the optional NFC or HID card readers to access the device. Set print quotas for individuals or workgroups to minimize unnecessary printing. With Locked Print, jobs are held until the authorized user releases them, so sensitive information isn't left unattended for passersby. The hard disk drive includes powerful encryption protection, which allows users to share information with confidence, and a DataOverwriteSecurity System (DOSS) overwrites latent images on the hard drive.



Make big productivity gains in small offices



1 Smart 10.1 inch Smart Operation Panel

4 Powerful Intel processor

2 1,000 sheet staple and stapleless hybrid finisher

5 Automatic and Single Pass Document Feeder for high speed scanning

3 High paper tray capacity of up to 4,700 sheets

RICOH MP 4055SP / MP 5055SP / MP 6055SP

MAIN SPECIFICATIONS

GENERAL		PAPER HANDLING	
Warm-up time:	20 seconds	Recommended paper size:	A3, A4, A5, A6, B4, B5, B6
First output speed:	4.0/2.9/2.9 seconds	Paper input capacity:	Standard: 1,200 sheets Maximum: 4,700 sheets
Continuous output speed:	40/50/60 pages per minutes	Paper weight:	52 - 300 g/m ²
Memory:	Standard: 2 GB	ECOLOGY	
HDD:	320 GB	Power consumption:	Maximum: 1,780 W Ready mode: 48.8 W Sleep mode: 0.82 W
Dimensions (W x D x H):	587 x 684 x 788 mm (MF only)	TEC (Typical Electricity Consumption):	1.7/ 2.3/ 2.8 kWh
Weight:	62.5 kg (MF only)		
Power source:	220-240 V, 50/60 Hz		
COPIER		OPTIONS	
Copying process:	Twin laser beams & Electro-photographic printing	Internal Multi-Fold Unit FD3000, PostScript3 Unit Type M29, ARDF DF3090, SPDF DF3100, Platen Cover PN2000, Marker Type 30, Paper Feed Unit PB3220, Paper Feed Unit PB3250, LCIT PB3260, LCIT RT3030, Caster Table Type M3, 1 Bin Tray BN3110, Internal Shift Tray SH3070, Side Tray Type M3, Bridge Unit BU3070, Finisher SR3210, Booklet Finisher SR3220, Punch Unit PU3050 NA, Punch Unit PU3050 EU, Punch Unit PU3050 SC, Finisher SR3230, Booklet Finisher SR3240, Punch Unit PU3060 NA, Punch Unit PU3060 EU, Punch Unit PU3060 SC, Internal Finisher SR3130, Punch Unit PU3040 NA, Punch Unit PU3040 EU, Punch Unit PU3040 SC, Internal Finisher SR3180, ADF Handle TypeC, USB Device Server Option Type M19, Unicode Font Package for SAP(R) 1 License, Unicode Font Package for SAP(R) 10 License, Unicode Font Package for SAP(R) 100 License, IEEE 802.11a/g/n Interface Unit Type M19, Extended USB Board Type M19, IEEE 1284 Interface Board Type M19, File Format Converter Type M19, FAX Memory Unit Type M19 64MB, OCR Unit Type M13, Optional Counter Interface Unit Type M12, Key Counter Bracket Type M3, External Keyboard Bracket Type M19	
Multiple copying:	Up to 999 copies	<i>For availability of models, optional apparatus and software, please consult your local Ricoh supplier.</i>	
Resolution:	600 x 600 dpi		
Zoom:	From 25% to 400% in 1% steps		
PRINTER			
Printer language:	Standard: PCL5e, PCL6, PDF Direct, P53 (Emulation) Option: Adobe PostScript3, Adobe PDF		
Print resolution:	Maximum 1,200 x 1,200 dpi		
Interface:	Standard: USB Host I/F, Ethernet 10 base-T/100 base-TX/1000 base-T Option: Wireless LAN (IEEE 802.11a/b/g/n), Bluetooth, USB Server for Second Network Interface, Bidirectional IEEE 1284/ECP, USB 2.0		
Network protocol:	TCP/IP (IP v4, IP v6)		
Supported operating systems:	Windows Vista/7/8/8.1/10, Windows Server/2003/2008/2008 R2/2012/2012 R2		
Mac OS environments:	Mac OS X v.10.7 or later		
UNIX environments:	Sun Solaris, HP-UX, SCO OpenServer, Red Hat Linux, IBM AIX, IBM iSeries/A5/400-using OS/400 Host Print Transform		
SAP® R/3® environments:	SAP® R/3®		
FAX (OPTION)			
Circuit:	PSTN, PBX		
Compatibility:	ITU-T (CCITT) G3		
Resolution:	8 x 3.85 line/mm, 200 x 100 dpi (standard) 8 x 7.7 line/mm, 200 x 200 dpi (standard) 8 x 15.4 line/mm, 16 x 15.4 line/mm, 400 x 400 dpi (with optional SAF memory)		
Transmission speed:	G3: 2 seconds (200 x 100 dpi, JBIG) G3: 3 seconds (200 x 100 dpi, MMR)		
Modem speed:	Maximum: 33.6 Kbps		
SCANNER			
Scanning speed:	Full colour (max): 110 ipm (Simplex) / 180 ipm (Duplex) B&W (max): 110 ipm (Simplex) / 180 ipm (Duplex)		
Resolution:	Standard: 100 dpi, 200 dpi, 300 dpi, 400 dpi, 600 dpi Default: 200 dpi		
Original size:	A3, A4, A5, B4, B5, B6		
File format:	TIFF, JPEG, PDF, High Compression PDF, PDF-A		
Bundled drivers:	Network TWAIN Driver		
Scan to email:	SMTP (Mail Server) Gateway and TCP/IP, POP, IMAP4		
Scan to folder:	SMB, FTP		

RICOH
imagine. change.

www.ricoh-ap.com

RICOH ASIA PACIFIC PTE LTD

103 Penang Road #08-01/07, VISIONCREST Commercial, Singapore 238467
Phone: +65 6830 5888, Fax: +65 6830 5830

All brand and/or product names are trademarks of their respective owners. Specifications and external appearance are subject to change without notice. The colour of the actual product may vary from the colour shown in the brochure. The images in this brochure are not real photographs and slight differences in detail might appear. Copyright © 2016 Ricoh Asia Pacific Pte Ltd. All rights reserved. This brochure, its contents and/or layout may not be modified and/or adapted, copied in part or in whole and/or incorporated into other works without the prior written permission of Ricoh Asia Pacific Pte Ltd.



RICOH @Remote



*Genuine Adobe® PostScript®3 and PDF Direct from Adobe® are available as options.

Digital Full Colour Multi Function Printers

RICOH
imagine. change.

RICOH
MP C3004
MP C3504
MP C4504
MP C6004
SERIES

✓ Copier ✓ Printer ✓ Facsimile ✓ Scanner



RICOH
MP C3004SP

30 ppm
Black & white
Full colour

RICOH
MP C3504SP

35 ppm
Black & white
Full colour

RICOH
MP C4504SP

40 ppm
Black & white
Full colour

RICOH
MP C6004SP

60 ppm
Black & white
Full colour

We're reinventing office life with Workstyle Innovation Technology.

RICOH MP C3004/C3504/C4504/C6004 SERIES

- 1 10.1 inch Smart Operation Panel
- 2 1,000 sheet hybrid finisher
- 3 Built-in duplex unit
- 4 Human Detection Sensor
- 5 Intel processor inside



Innovating your workplace.

We want to create real functionality and a seamless user experience. And thanks to a range of helpful features – including the ability to securely print from mobile devices – our main innovation is perhaps the sheer variety of apps and customisable solutions that will really make a difference to your day.

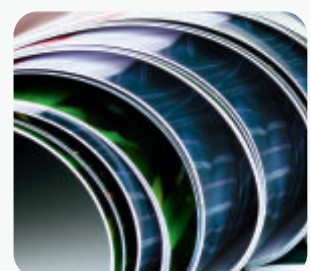
A whole new world of Apps.

If you're looking to customise your Smart Operation Panel, you can download and install additional apps from our Application Site – as well as update apps, firmware or uninstall apps. And you can do all this without accessing our main site, so work doesn't get interrupted.



Seamless processing.

The new Intel-based controller greatly enhances printing and scanning of complex documents and reduces overall processing time. And when it comes to print and image quality, RICOH MFPs achieve vibrant results with the precision of 1200 x 1200 dpi and print speeds from 30-60 ppm. For more demanding graphic environments, a Fiery controller option is available to meet precise colour matching and design requirements.



Ricoh delivers a better way of working. All you need is one of our new MFPs.

As our world keeps on changing, every office is evolving its own working style. To keep pace with new needs which constantly emerging, our MFPs have evolved even further.

The new MFPs offer intuitive controls, and a user interface that streamlines your workflow. A wide range of apps to suit many different working styles. And support for new ways to leverage your business data, even when you're away from the office.

Advanced features enhance usability and make your working life easier. Designed with tomorrow's workplace in mind, these new models deliver a better way of working. Packed with all the highly-evolved functionality needed for today's business, they're ready to transform your office.

■ User-friendly

Power at your fingertips



The user interface is simple and intuitive. From the wide range of apps provided, choose the ones that suit your way of working. As soon as you touch the screen, you'll find yourself working smarter.

■ Support the way you work today

Freedom to work remotely



Using cloud connectivity, you can view documents remotely on your smart device, and share information effectively through RICOH MFPs. Today's new, location-independent working styles, empowered.

■ Comfortable design

An enhanced working environment



Equipped with Human Detection Sensor, RICOH MFPs are ready to work instantly at the moment when you approach. With Ricoh's unique noise-reduction technology, they make your office a smoother, better place to work.

RICOH MP C3004SP / MP C3504SP / MP C4504SP / MP C6004SP

MAIN SPECIFICATIONS

GENERAL

Warm-up time:	25/25/24/24 seconds
First output speed:	Full colour: 7.1/7.1/5.7/4.5 seconds B/W: 4.6/4.6/4.0/3.1 seconds
Continuous output speed:	30/35/45/60 pages per minute
Memory:	Standard: 2 GB Maximum: 4 GB
HDD:	250/250/320/320 GB
Dimensions (W x D x H):	With ARDF: 587 x 685 x 913 mm With SPDF: 587 x 685 x 963 mm
Weight:	101.3/101.3/103.4/103.4 kg
Power source:	220 - 240 V, 50/60 Hz

PRINTER

Printer language:	Standard: PCL5c, PCL6(XL), PDF Option: XPS, Adobe® PostScript®3™, IPDS, PictBridge
Print resolution:	Maximum: 1,200 x 1,200 dpi/2bit
Interface:	Standard: SD slot, USB Host I/F, Ethernet 10 base-T/100 base-TX/1000 base-T Option: Wireless LAN (IEEE 802.11a/b/g/n), Bluetooth, USB Server for Second Network Interface, Bidirectional IEEE 1284/ ECP, USB 2.0 (Type B)
Mobile printing capability:	Apple AirPrint™
Windows® environments:	Windows® Vista/7/8/8.1/10, Windows® Server 2008/2008R2/2012/2012R2
Mac OS environments:	Macintosh OS X Native v10.7 or later (PS3™ required)
UNIX environments:	UNIX Sun® Solaris, HP-UX, SCO OpenServer, RedHat® Linux Enterprise, IBM® AIX
SAP® R/3® environments:	SAP® R/3®

SCANNER

Scanning speed:	ARDF: Max. 80 originals per minute SPDF: Max. 110 (simplex)/180 (duplex) originals per minute
Resolution:	Maximum: 1,200 dpi
Original size:	A3, A4, A5, B4, B5
Bundled drivers:	Network TWAIN
Scan to:	Email, Folder

COPIER

Copying process:	Dry Electrostatic Transfer System with Dual component Development: 4-Drum method
Multiple copying:	Up to 999 copies
Resolution:	600 dpi/4 bit
Zoom:	From 25% to 400% in 1% steps

FAX (OPTION)

Circuit:	PSTN, PBX
Compatibility:	ITU-T (CCITT) G3
Resolution:	Standard: 8 x 3.85 line/mm, 200 x 100 dpi, 8 x 7.7 line/mm, 200 x 200 dpi Option: 8 x 15.4 line/mm, 400 x 400 dpi, 16 x 15.4 line/mm, 400 x 400 dpi
Compression method:	MH, MR, MMR, JBIG
Transmission speed:	G3: 2 second(s) (200 x 100 dpi, JBIG), 3 second(s) (200 x 100 dpi, MMR)
Modem speed:	Maximum: 33.6 Kbps

PAPER HANDLING

Recommended paper size:	SRA3, A3, A4, A5, A6, B4, B5, B6
Paper input capacity:	Standard: 1,200 sheets (550 x 2 trays 100 x 1 bypass tray) Maximum: 4,700 sheets
Paper output capacity:	Maximum: 1,625/1,625/3,625/3,625 sheets
Paper weight:	52 - 300 g/m ²

ECOLOGY

Power consumption:	Maximum: 1,700/1,700/1,850/1,850 W Ready mode: Less than 47.3/47.3/55.1/55.1 W Sleep mode: Less than 0.93/0.93/0.89/0.89 W TEC (Typical Electricity Consumption): 1.2/1.3/1.8/2.7 kWh
--------------------	--

SOFTWARE

One-stop solution for all your document management requirements.	
Standard:	SmartDeviceMonitor for print & scan, Web Image Monitor, DMNX Lite
Optional:	Card Authentication Package, EZ Charger Express, Integrated Cloud Environment (ICE), Global Scan NX, Device Manager NX Pro/Enterprise/Accounting, Stream Line NX, Equitrac, DICOM

OPTIONS

ADF handle, Platen cover, 1 x 550-sheet paper tray, 2 x 550-sheet paper tray, 2,000-sheet large capacity tray, 1,500-sheet side large capacity tray, Bridge unit, 1,000-sheet Hybrid finisher, 3,000-sheet finisher, Internal finisher, Internal finisher with stapleless stapler, 1,000-sheet booklet finisher, 2,000-sheet booklet finisher, Punch kits, Internal shift tray, 1-bin tray, Side tray, Caster table, Cabinet, Bi-directional IEEE 1284, Wireless LAN (IEEE 802.11a/g/n), Bluetooth, Pictbridge, PostScript3, IPDS unit, Counter interface, File format converter, Key counter bracket, Card reader bracket, Data Overwrite Security Unit (Certified version), Fax Connection Unit, Fax marker, Fax memory, Fax option, Unicode Font Package for SAP, OCR Unit, Smart Card Reader Built-in Unit, SRA3 unit, XPS direct print, Enhanced security HDD, Keyboard bracket, NFC Card Reader, Font SD card, USB Device Server, Banner paper tray guide, G3 Interface unit, EFI colour controller, Extended USB board, 4GB Memory unit, Bluetooth

Please note that some options may only be available for certain models in the range. For availability of models, options and software, please consult your local Ricoh representative.



ISO 9001:2000 certified
ISO 14001 certified

Ricoh has designed these products to meet EC ENERGY STAR guidelines for energy efficiency.

All brand and/or product names are trademarks of their respective owners.

Specifications and external appearance are subject to change without notice. The colour of the actual product may vary from the colour shown in the brochure.

RICOH
imagine. change.

URL: <http://www.ricoh.co.in>

RICOH INDIA LIMITED

CORPORATE OFFICE: 2nd Floor, Salcon Aurum Building, Plot No. 4, District Centre, Jasola, New Delhi-110 025
Tel: (011) 49103000, 49103100, 49103200 Fax: (011) 49103099, 49103199 Email: ril.info@ricoh.co.in SMS: 'RICOH' to 53456
REGISTERED OFFICE: 801, 8th Floor, Akruti Star, MIDC Central Road, Andheri-East, Mumbai - 400 093
Tel: (022) 66833000 Fax: (022) 67032099
Ahmedabad, Bangalore, Bhopal, Bhubaneswar, Chandigarh, Chennai, Coimbatore, Delhi, Gurgaon, Guwahati, Hyderabad, Jaipur, Kochi, Kolkata, Lucknow, Mumbai, Nagpur, Noida, Patna, Pune, Ranchi, Visakhapatnam.

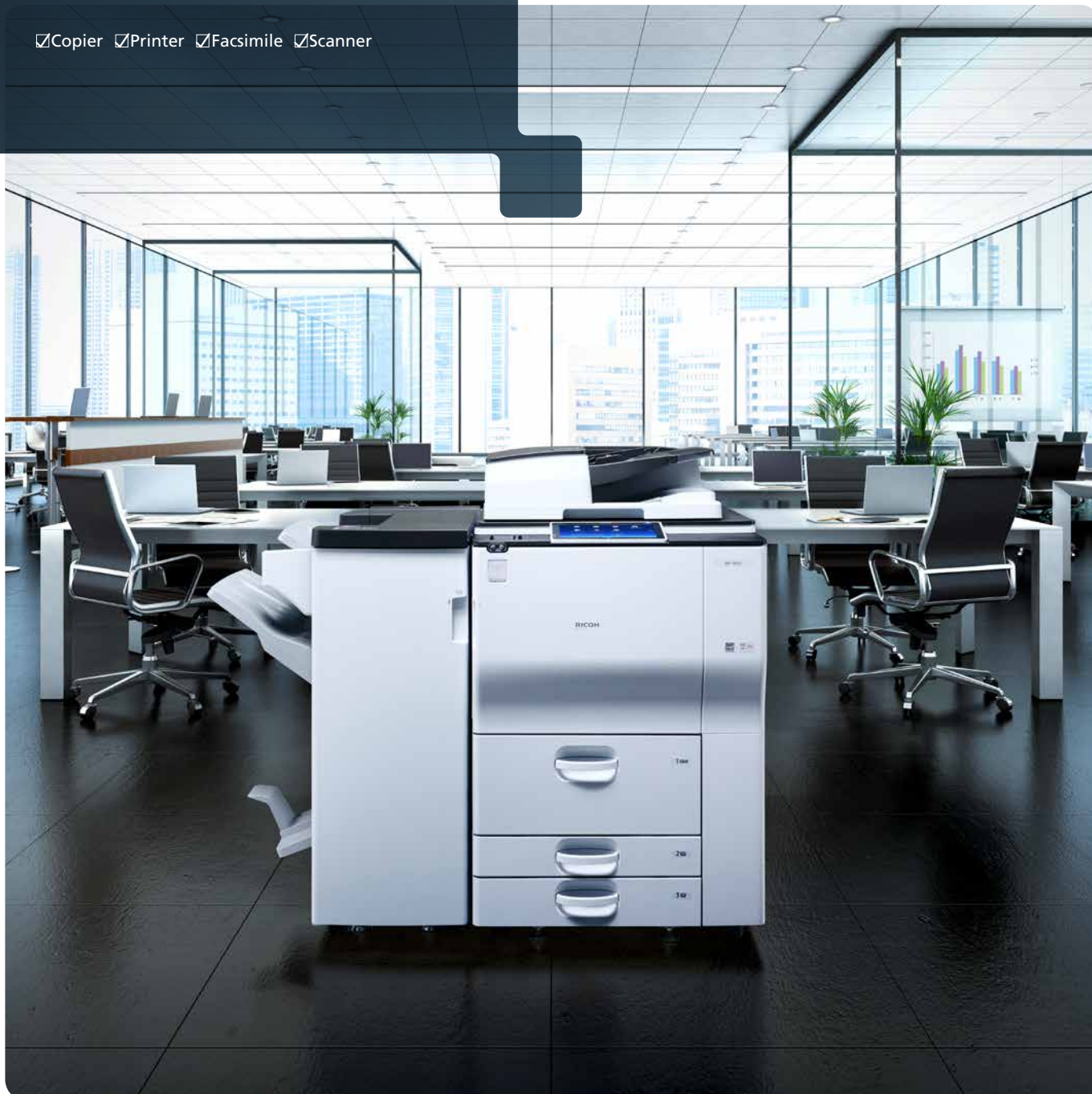
For more information, please contact:

Digital B&W Multi Function Printer

RICOH MP 9003SP MP 7503SP MP 6503SP

Copier Printer Facsimile Scanner

RICOH
imagine. change.



RICOH
MP 9003SP

90
ppm B&W

RICOH
MP 7503SP

75
ppm B&W

RICOH
MP 6503SP

65
ppm B&W

Powerful × Tough

Overwhelming Power and Unwavering Reliability

The machine provides the outstanding performance one would expect from the top-class black & white multifunction printer. The machine displays high productivity based on its powerful and high-speed output and fast reading capabilities as well as on its variety of post-processing functions. The machine is also not prone to paper jams and provides high stability with minimum downtime to meet the requirements for core offices machines: to be usable for long hours and able to continuously deliver output. Moreover the Smart Operation Panel enables intuitive operation and user-friendliness. Experience the power and reliability provided by this advanced multifunction printer.



*The photo shows the RICOH MP 9003SP equipped with an optional finisher with the stack capability of 2,000 sheets (SR4130) and a large capacity tray (LCT) for A4 paper (RT4040).

* The screen images are simulated.

220 page 



Scan Speed

The machine scans in color or monochrome up to 120 pages per minute*1 in simplex and 220 pages per minute*1 in duplex, thereby helping accelerate your office's attempts to become paperless.

*1. A4 landscape, 200/300 dpi, run for a single paper size.



3,000 sheets

Various Options

You can increase the productivity of the machine even more by attaching to it a paper folder, a finisher that provides the stack capability of 3,000 sheets*2, or various other optional devices.

*2. imagio SR4080/SR4120 3,000 sheet finishers

10.1 inch



User Friendly

The machine is equipped with the 10.1-inch Smart Operation Panel to provide flick & drag and various other functions for intuitive operation, thereby providing users with new convenience.

TEC 
4,9 kWh

Environment Friendly

The typical electricity consumption (TEC) can be as small as 4.9 kWh.*3 This highly energy-efficient machine meets the standards of the International ENERGY STAR Program for all the models.

*3 For RICOH MP 6503 SP

RICOH MP 9003SP/7503SP/6503SP

Innovating your workplace.

Workflow made seamless.

In fast pacing work environment, there is no compromise to slow productivity. With enhance technology, Ricoh improved these powerful A3 Mono MFP that users can rely on. Delivering professional level of output with high speeds of 65, 75 and 90ppm, extra security and consistent quality like an in-house production with all features of outsourced print facility.



Smart technology.

Each device is equipped with software capabilities that cater and customizable to business needs. With Ricoh innovative 10.1" Smart Operation Panel will change the way how user can interact with Ricoh MFPs. This user-friendly tablet-style control panel benefits and improves business work flow and operations with application capability. Just touch, swipe, pinch and get the job done.



Continuous quality, while controlling costs.

These MFPs are ultra-capable, fast, and rich in functionality too. They include innovative features like finishers and a multi-folding unit which can fold documents into a variety of different styles - including tri-fold, gatefold and four-fold. Users can create letters and invoices to be ready for envelope insertion and avoid any outsourcing of complex print requirements.



Higher productivity.

Built-in Human Detection Sensor allows the device to respond immediately to help business to efficiently completing tasks without delay. Improved power saving technology also helps users to lower cost and maintain continuous high quality output.



Built in efficiency.

Book Copy application is available for built-in features to help erase shadows, enabling books and loose sheet originals to be scanned with the Single Pass Document Feeder open. These are designed to minimise toner wastage, lower operating costs while meeting deadlines. Another highlight of the productivity features include large capacity trays and a faster scan speed.



Critical Capabilities For Business Communications



- 1 Easy access via intuitive Smart Operation Panel.
- 2 Standard 4,300-sheet paper trays to avoid frequent refills.
- 3 2,000-sheet booklet maker with 65-page stapler.
- 4 Standard 100-sheet bypass tray for paper types up to 300 g²/m.
- 5 Multi-folding unit supporting 6 folding patterns for creative printing solutions.
- 6 Cover interposer to insert pre-printed colour sheets/covers.
- 7 USB/SD card reader to print from/scan to flash memory.
- 8 4,000-sheet A4 Large Capacity Tray for high volume productivity.

RICOH MP 6503SP / MP 7503SP / MP 9003SP

MAIN SPECIFICATIONS

GENERAL		FAX (OPTION)	
Warm-up time:	20/20/300 seconds	Circuit:	PSTN, PBX
First output speed:	3.2/3.2/2.9 seconds	Compatibility:	ITU-T (CCITT) G3
Continuous output speed:	65/75/90 pages per minute	Resolution:	Standard: 8 x 3.85 line/mm, 200 x 100 dpi, 8 x 7.7 line/mm, 200 x 200 dpi
Memory:	Standard: 2GB	Option:	8 x 15.4 line/mm, 400 x 400 dpi, 16 x 15.4 line/mm, 400 x 400 dpi
HDD:	Standard: 320GB	Transmission speed:	G3: 2 seconds (200 x 100 dpi, JBIG), G3: 3 seconds (200 x 100 dpi, MMR)
Dimensions (W x D x H):	690 x 803 x 1,161 mm	Modem speed:	Maximum: 33.6 Kbps
Weight:	200 kg		
Power source:	220 - 240 V, 50/60 Hz		
COPIER		PAPER HANDLING	
Copying process:	Four laser beams scanning and electro-photographic printing	Recommended paper size:	Standard paper tray(s): A3, A4, A5
Multiple copying:	Up to 999 copies	Bypass tray:	A3, A4, A5, A6
Resolution:	600 dpi	Paper input capacity:	Standard: 4,300 sheets Maximum: 8,300 sheets
Zoom:	From 25% to 400% in 1% steps	Paper output capacity:	Maximum: 3,500 sheets
PRINTER		Paper weight:	Paper tray: 52 - 256 g/m ² Bypass tray: 52 - 300 g/m ² Duplex: 64 - 256 g/m ²
Printer language:	Standard: PCL5e, PCL6, PDF direct print Option: XPS, Adobe® PostScript® 3™, IPDS	ECOLOGY	
Print resolution:	Minimum 300 x 300 dpi Maximum 1,200 x 1,200 dpi	Power consumption:	Maximum: 1,900 W Ready mode: 261/261/290W Low power mode: 165/167/198 W Sleep mode: 0.9 W TEC (Typical Electricity Consumption): 4.9/5.4/12.6kWh
Fonts:	PCL (Scalable: 45 fonts, Bitmapped: 6 fonts, International fonts: 13 fonts), PS3 (136 Roman fonts), IPDS (108 fonts)	OPTIONS	
Interface:	Standard: SD slot, USB Host I/F, Ethernet 10 base-T/100 base-TX/1000 base-T Option: IEEE 1284, Wireless LAN (IEEE 802.11a/b/g/n), USB 2.0 (Type B) TCP/IP (IP v4, IP v6)	Cover Interposer Tray CI4030, Cover Interposer Tray CI4040, Finisher SR4120, Booklet Finisher SR4130, Output Jogger Unit Type M25, LCIT RT4040, XPS Direct Print Option Type M25, Fax Option Type M25, G3 Interface Unit Type M25, FAX Memory Unit Type M25 64MB, Fax Connection Unit Type M25, PostScript3 Unit Type M25, IPDS Unit Type M25, Copy Connector Type M25, External Keyboard Bracket Type M25, Finisher SR4080, Multi-Folding Unit FD4000, Output Jogger Unit Type 9002B, Punch Unit Type 1075 NA 3/2, Punch Unit Type 1075 EU 2/4, Punch Unit Type 850 S4, Punch Unit PU3060 NA, Punch Unit PU3060 EU, Punch Unit PU3060 SC, A3/11" x 17" Tray Type 9001, 8 1/2"x14" PAPER SIZE TRAY Type 9002, Copy Tray Type 9002, Mail Box CS4010, ADF Handle Type C, IEEE 1284 Interface Board Type M19, IEEE 802.11a/g/n Interface Unit Type M19, USB Device Server Option Type M19, Extended USB Board Type M19, Unicode Font Package for SAP(R) 1 License, Unicode Font Package for SAP(R) 10 License, Unicode Font Package for SAP(R) 100 License, File Format Converter Type M19, DataOverwriteSecurity Unit Type M19, OCR Unit Type M13, Optional Counter Interface Unit Type M12, Card Reader Bracket Type 3352, Key Counter Bracket, NFC Card Reader Type M19, Smart Card Reader Built-in Unit Type M19, Tab Sheet Holder Type 9002	
Network protocol:	TCP/IP	CONSUMABLES	
Windows® environments:	Windows® Vista, Windows® 7, Windows® 8, Windows® 8.1, Windows® Server 2003, Windows® Server 2003R2, Windows® Server 2008, Windows® Server 2008R2, Windows® Server 2012, Windows® Server 2012R2	Toner capacity:	Black: 43,000 prints
Mac OS environments:	Macintosh OS X v10.7 or later	<i>For availability of models, options and software, please consult your local Ricoh supplier.</i>	
UNIX environments:	UNIX Sun® Solaris HP-UX SCO OpenServer RedHat® Linux IBM® AIX		
SAP® R/3® environments:	SAP® R/3®		
Other supported environments:	IBM iSeries® AS/400-using OS/ 400 Host Print Transform		
SCANNER			
Scanning speed:	120 ipm (Simplex) / 220 ipm (Duplex) originals per minute		
Resolution:	Maximum 600 dpi		
Original size:	A3, A4, A5, B4, B5		
Scan to:	E-mail, Folder		

RICOH
imagine. change.

www.ricoh-ap.com

RICOH ASIA PACIFIC PTE LTD

103 Penang Road #08-01/07, VISIONCREST Commercial, Singapore 238467
Phone: +65 6830 5888, Fax: +65 6830 5830

All brand and/or product names are trademarks of their respective owners. Specifications and external appearance are subject to change without notice. The colour of the actual product may vary from the colour shown in the brochure. The images in this brochure are not real photographs and slight differences in detail might appear. Copyright © 2015 Ricoh Asia Pacific Pte Ltd. All rights reserved. This brochure, its contents and/or layout may not be modified and/or adapted, copied in part or in whole and/or incorporated into other works without the prior written permission of Ricoh Asia Pacific Pte Ltd.

RICOH @Remote

