

German J. Krieglsteiner

UPPSALA UNIVERSITETSBIBLIOTEK



16000

000313628

Verbreitungsatlas der Großpilze Deutschlands (West)

Band 2: Schlauchpilze

Geleitwort von Minister Harald B. Schäfer

1987 Verbreitungskarten



- 1180 *Tapesia retincola* (Rabenh.) P. Karsten
 = *Trichobelonium retincola* (Rabenh.) Rehm
 = *Mollisia retincola* (Rabenh.) P. Karsten
 = *Belonium retincola* (Rabenh.) Sacc.
 = *Belonopsis retincola* (Rabenh.) LeGal & Mangelot
 ? = *Pyrenopeziza cyanites* (Phill.) Boudier
- 1181 *Mollisia revincta* P. Karsten
 = *Pyrenopeziza revincta* (P. Karsten) Gremmen
 = *Mollisia minutella* (Sacc.) Rehm
- 1182 *Tapesia rosae* (Pers.) Fuckel
 = *Mollisia rosae* (Pers.) P. Karsten
- *Mollisia schumacheri* (Fr.) Rehm
 *Mollisia sericeomarginata* Svrcek
- 1183 *Mollisia spectabilis* Kirschstein in Rehm
- 1184 *Tapesia strobilicola* (Rehm) Sacc.
- 1185 *Mollisia sublividula* (Nyl.) P. Karst
 ? = *Hyaloscypha mollisiaeformis* Velen.
- 1186 *Niptera submelaena* Rehm
 = *Belonopsis juncicola* Graddon
- 1187 *Mollisia uda* (Pers.) Gill.
- 1188 *Mollisia urnicola* (Mouton & Sacc.) Engel & Svrcek
 = *Pyrenopeziza urnicola* Mouton & Sacc.
- 1189 *Tapesia vaccinii* (Rehm) Svrcek
- 1190 *Mollisia ventosa* (P. Karsten) P. Karsten
 = *Mollisia olivella* (Quélet) Boudier
 Flatteriges Weichbecherchen
- 1191 *Tapesia villosa* Aebi

Mollisina von Höhnelt 1926, Hyaloscyphaceae, Leotiales
 [= *Dendrotrichoscypha* Svrcek 1977]

- 1192 *Mollisina acerina* (Mouton) v. Höhnelt
 [incl. *Mollisina globulosa* Arendholz]
- 1193 *Mollisina echinulifera* Scheuer & Baral in Scheuer
- 1194 *Mollisina flava* Arendholz
- 1195 *Mollisina rubi* (Rehm) v. Höhnelt
 [incl. *Dendrotrichoscypha acanthopila*]

Monascostroma von Höhnelt 1918, Dothideaceae, Dothideales

- 1196 *Monascostroma innumerosa* (Desm.) v. Höhnelt
 *Monascostroma sphagnophilum* Döbberer & Poelt

Monilinia Honey 1928, Sclerotiniaceae, Leotiales

- 1197 *Monilinia aucupariae* (Ludwig in Woronin) Whetzel
- 1198 *Monilinia baccarum* (Schroeter) Whetzel
 = *Stromatinia baccarum* (Schroeter) Boudier
- *Monilinia fructicola* (Winter) Honey
 = *Sclerotinia fructicola* (Winter) Rehm
- 1199 *Monilinia fructigena* Honey ex Whetzel
 = *Stromatinia fructigena* (Schroeter) Boudier
 = *Sclerotinia fructigena* Aderh. & Ruhl.
- 1200 *Monilinia johnsonii* (Ellis & Everh.) Honey
 = *Ciboria johnsonii* Ellis & Everh.
 = *Sclerotinia crataegi* Magnus
 Weißdornfrucht-Becherling
- *Monilinia laxa* (Aderh. & Ruhl.) Honey ex Whetzel
 = *Sclerotinia laxa* Aderh. & Ruhl
 An.: *Monilia cinerea* Bonorden
 An.: *Monilia laxa* (Ehrenb.) Sacc.
- 1201 *Monilinia megalospora* (Woronin) Whetzel
 = *Stromatinia megalospora* Wor.
- *Monilinia mespili* (Schellenb.) Whetzel
 = *Sclerotinia mespili* Schellenb.
- 1202 *Monilinia oxycocci* (Woronin) Honey
- 1203 *Monilinia urnula* (Weinmann) Whetzel
 = *Sclerotinia urnula* (Weinmann) Rehm
 = *Stromatinia urnula* Weinmann

Monographella Petrak 1924, Amphisphaeriaceae, Sphaeriales

- *Monographella nivalis* (Schaffnit) E. Müller & v. Arx
 = *Calonectria nivalis* Schaffnit
 = *Griphosphaeria nivalis* (Schaffnit) E. Müller & v. Arx
 = *Micronectriella nivalis* (Schaffnit) C. Booth

Morchella St. Amans 1821, Morchellaceae, Pazizales
 [incl. *Mitrophora* Léveillé 1846]

- 1204 *Morchella elata* Fr.
 [incl. *Morchella conica* Pers.]
 [incl. var. div.]
 = *Morchella costata* (Vent.) Pers.
 = *Morchella deliciosa* Fr.
 = *Morchella hortensis* Boudier
 Hohe Morchel, Spitzmorchel
- 1205 *Morchella esculenta* (L.) Pers.
 [incl. var. *alba* Boudier]
 = *Morchella crassipes* (Vent.) Pers.: Fr.
 = *Morchella rotunda* (Pers.) Krbh.
 = *Morchella umbrina* Boudier
 = *Morchella spongiola*
 = *Morchella vulgaris* (Pers.) Boudier
 Speisemorchel
- 1206 *Morchella gigas* (Batsch: Fr.) Pers.
 = *Morchella hybrida* (Sow.) Pers.
 = *Morchella rimosipes* DC.: Fr.
 = *Mitrophora semilibera* (DC.: Fr.) Lév.
 Halbfreie Morchel, Käppchen-Morchel

Morenoina Theissen 1913, Asterinaceae, Dothideales

- *Morenoina festucae* (Libert) J. P. Ellis
 = *Aulographum festucae* Libert

Muellerella Hepp ex Müll. Arg. 1862, Verrucariales

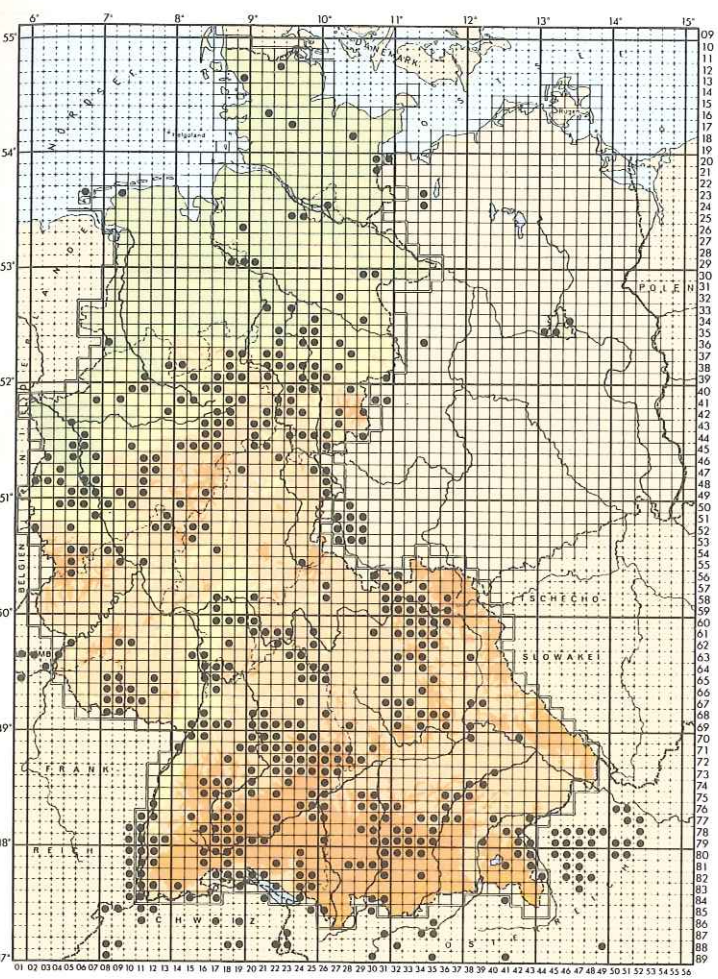
- *Muellerella lichenicola* (Sommerf.) D. Hawksw.

Mycocalicium Vainio 1890, Mycocaliciaceae, Caliciales

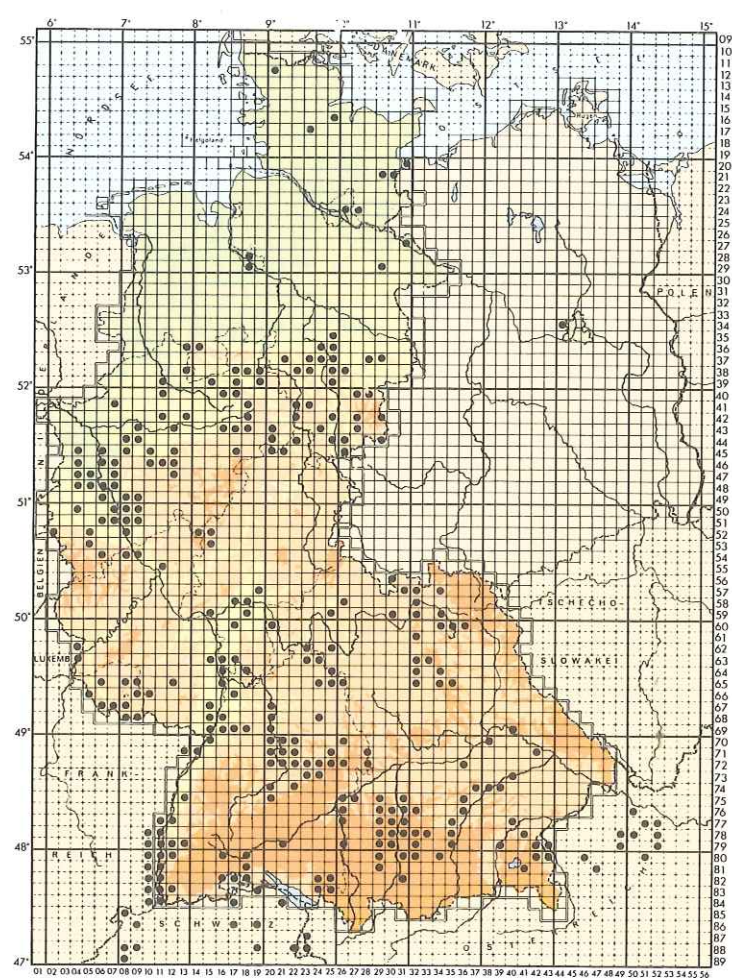
- *Mycocalicium subtile* (Pers.) Szat.
 = *Mycocalicium parietinum* (Ach.) Vainio

Mycosphaerella Johanson 1884,? Dothideaceae, Dothideales
 [= *Sphaerella* (Fr.) Rabenhorst; non: Sommerfeldt]

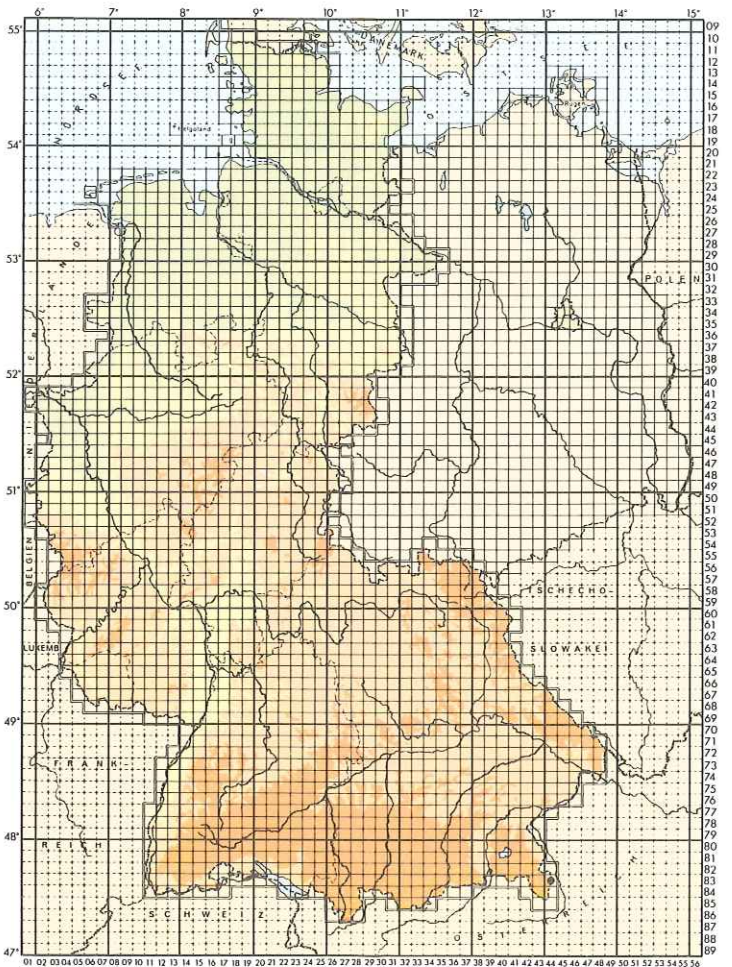
- *Mycosphaerella acerina* (Wallr.) Johanson ex Oudem.
- *Mycosphaerella adonis* (Sacc.) Lindau
- *Mycosphaerella aethiops* (Fuckel) Lindau
- *Mycosphaerella affinis* (Winter) Starb.
- *Mycosphaerella agrimoniae* H. & P. Sydow
- 1207 *Mycosphaerella airicola* Petrak
- *Mycosphaerella alsophila* (Kirschstein) Tomilin
- *Mycosphaerella anethi* (Pers.: Fr.) Petrak
- *Mycosphaerella anthemidina* Petrak
- *Mycosphaerella ascophylli* Cotton
- 1208 *Mycosphaerella aspidii* (v. Höhnelt) Holm & K. Holm
 ? = *Mycosphaerella aquila* (Fr.) Schroeter
- *Mycosphaerella atropae* H. & P. Sydow
- *Mycosphaerella brunneola* (Fr.) Allesch. & Schnabel
 = *Sphaerella brunneola* (Fr.) Cooke
- *Mycosphaerella callistaea* (H. & P. Sydow) Rehm
- *Mycosphaerella caricicola* (Fuckel) Lindau
- 1209 *Sphaerella cirsii-arvensis* Petrak
- *Mycosphaerella carlinae* (Winter) Feltgen
- *Mycosphaerella cerasella* Aderh.
- *Mycosphaerella chorinensis* (Kirschstein) Tomilin
- 1210 *Mycosphaerella clymenia* (Sacc.) Johanson ex Oudem.
 = *Sphaerella clymenia* Sacc.
- *Mycosphaerella coymiana* Jaap
- *Mycosphaerella cruciferarum* (Fr.) Lindau
- *Mycosphaerella denigrans* (Kirschstein) Tomilin
- *Mycosphaerella deutziae* H. Sydow



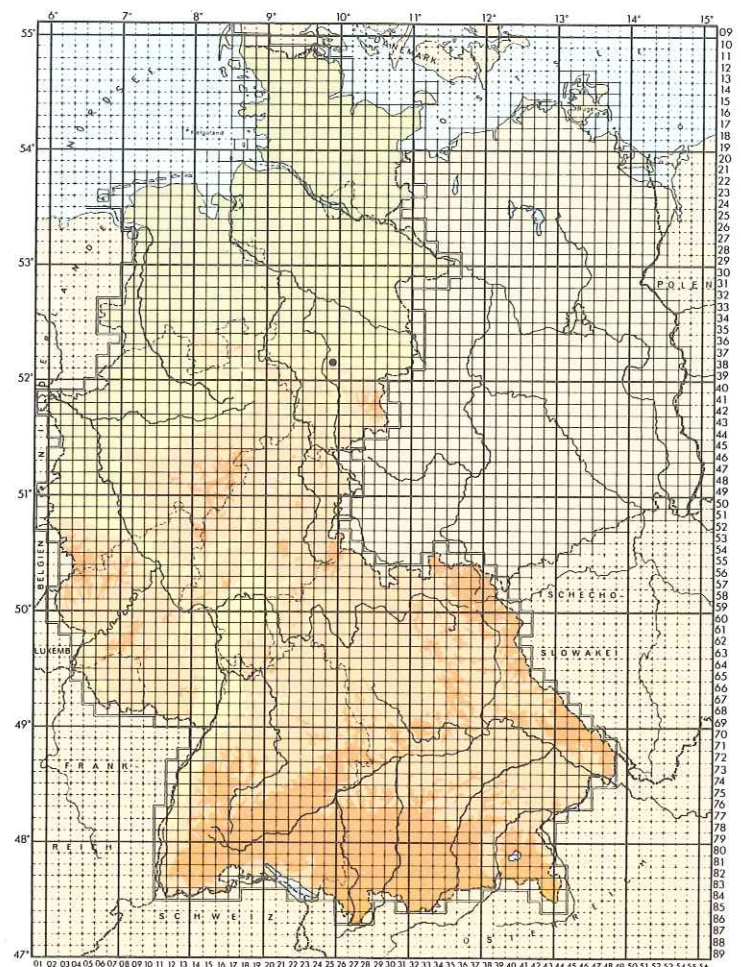
1205 *Morchella esculenta*



1206 *Morchella gigas*



1207 *Mycosphaerella airicola*



1208 *Mycosphaerella aspidii*