



BROMELETTER

***THE OFFICIAL JOURNAL OF
THE BROMELIAD SOCIETY
OF AUSTRALIA INC.***

Issue: **Volume 52 Number 3 - May - June, 2014.**

CONTENTS

| | | |
|---|---------------|-------------|
| Management Details | | 2,3, 22, 23 |
| Bromeliad Fair | | 4 |
| <i>Bromsmatta</i> Update | | 5 |
| Plant of the Month March, April, | | 6, 7 |
| Updated Show Rules on Web | Ian Hook | 7 |
| Show & Tell –February | | 8, 9 |
| Some Pests of Bromeliads | | 10 |
| Photos | | 11,12,13,14 |
| Show and Tell March | | 15 |
| Article—'Catopsis' | Bob Reilly | 15, 17 |
| Judging School | | 17 |
| Members Recognised / New Members | | 18,19 |
| Treasurer's Report February / March | | 19 |
| Aechmea triticina to guarapariensis to roberto-seidelii . . . update | Derek Butcher | 20 |
| Vale—Fred Thompson | | 21 |
| Editor | Kerry McNicol | 19, 21 |
| Seed Bank | | 23 |



BROMELETTER is published bi-monthly at Sydney
by
The Bromeliad Society of Australia Incorporated.

**Deadlines for articles: 15th of February, April, June,
August, October and December, To allow for pub-
lishing in the first week of March, May, July,
September, November and January.**

COMMITTEE

| | | |
|----------------------|---|--------------|
| President | Ian Hook (ianook1@bigpond.com) | 0408 202 269 |
| Vice President (1) | Robyn Firth | 02 4774 2332 |
| Vice President (2) | Ron Farrugia | 02 9533 2546 |
| Secretary | Patricia Sharpley | 02 4736 1778 |
| Treasurer | Alan Mathew | 02 9516 5976 |
| Editor | Kerry McNicol | 0439 998 049 |
| Member | Helga Nitschje | 02 9624 1528 |
| Member | Gary Lock | 02 9836 2801 |
| Member | John Cornale | 02 9823 0987 |
| Member | Joe de Gabriel | 02 4976 1409 |
| Member | Eugene Morris | 02 9743 6443 |
| Membership Secretary | Kerry McNicol (membsec@bromeliad.org.au) | 0439 998 049 |

BROMELIAD SOCIETIES AFFILIATED WITH THE BROMELIAD SOCIETY OF AUSTRALIA INC.

Bromeliad Society of Victoria.

The Secretary, P.O. Box 101, Darling. Vic. 3145

Caboolture & Districts Brom. Society Inc.,

The Secretary, P.O. Box 748, Caboolture Qld. 4510.

Cairns Bromeliad Society Inc .

The Secretary, P.O. Box 28, Cairns. Qld. 4870

Gold Coast Succulent & Brom. Society

The Secretary, P.O. Box 94, Southport B.C., Southport Qld. 4215.

The Hunter Bromeliad Society Inc.,

C/- 59 Barton St, Mayfield. NSW 2304.

Townsville Bromeliad Study Group,

C/- Mrs K Greenway, 10 Holstein Place, BLACK RIVER. Qld 4814.

Material for Bromeletter - address to:

e-mail: membsec@bromeliad.org.au

All other correspondence to:

The Secretary, Bromeliad Society of Australia Inc.,

P.O. Box 340, RYDE NSW 2112.

Please Note

BROMELIAD plants will be on sale at the Club from 12.30 p.m. before the monthly meeting.

MEETING VENUE AND TIME

**SECOND SATURDAY OF EACH MONTH AT THE
BURWOOD R. S. L. CLUB,
Cnr. Shaftesbury Road and Clifton Avenue, Burwood.**

Meetings commence at 1.00 p.m.

in the First Floor Conference Rooms/Auditorium.

**PLEASE NOTE: AFTERNOON TEA WILL BE ORGANISED BY THE
CATERING STAFF, NO FOOD IS TO BE BROUGHT INTO THE CLUB**

MEETINGS PROGRAM

**May 10, 2014 Ordinary Meeting & Show and Tell.
Talk. Guest Speaker.**

**June 14, 2014 Ordinary Meeting & Show and Tell.
Talk. Guest Speaker.**

EVENTS CALENDAR

May 3/4, 2014

BSA Autumn Show, Burwood RSL Club,

Shaftesbury Rd, Burwood, NSW

Sat 10am-5pm Sun10am-3pm

Bromeliad Fair
June 7/8, 2014

Concord Senior Citizens Centre (see next page for details)
'Bloomin' Broms'.Cominos House, Cnr Little & Greenslopes St,
Edge Hill Q

Sept. 8-14, 2014

"Bromeliads in Paradise" Honolulu, Hawaii, USA.

Oct 18/19, 2014

BSA Spring Show, Burwood RSL. Club.

April 16-19, 2015.

18th Australasian Bromeliad Conference, Parramatta. NSW.

Life Members:

Grace Goode O.A.M

Margaret Draddy

Bill Morris

Ron Farrugia

Ruby Ryde

Graham McFarlane

Keith Ryde

Eugene Morris

Andre Staelens

Ken Woods

BSA Website

www.bromeliad.org.au
president@bromeliad.org.au
President Ian's Mobile:
0408 202 269

MAIL ORDER PAYMENTS BY BANKCARD/MASTERCARD/VISA.

(Subject to A\$10.00 minimum.)

Members using the Bankcard, Mastercard or Visa mail order facility should provide the following details, printed clearly in block letters, on a separate sheet of paper:-

- Name and address of **MEMBER.**
- **CARDHOLDER** name details, as shown on card.
- Bankcard/Mastercard/Visa number and expiry date.
- **CARDHOLDER** signature (essential).
- Payment details (membership renewal, book purchase, postage, etc.) with \$A amounts for each item.

BROMELIAD FAIR



Hundreds of exotic bromeliads from beautiful to bizarre.

Rare and unusual Tillandsias, colourful Neos and Guzmanias,
spectacular Vrieseas, dazzling Aechmeas...

Broms for all tastes!

Saturday/Sunday, May 17/18, 2014

You will find us at:

Concord Senior Citizens Centre:

9-11 Wellbank Street,
Concord, NSW 2137.

Saturday 10-4

Sunday 9-12



- EFTPOS
- Books and fertilizer for bromeliads also available

Free entry – and bring a box.

For more information please contact:

Garry Flemming – {02} 6553 9868 / 0413 178 884

Peter Tristram – peter@bromeliads.com.au

16TH–19TH
APRIL 2015

UPDATE

BROMSMATTA

18TH AUSTRALASIAN BROMELIAD CONFERENCE

The Conference Registration form is now available on the web. Earlybird registration closed at the end of April.

www.bromeliad.org.au/news/Conference/Bromsmatta2.pdf

Remember, this does NOT include accommodation at the Novotel. This should be arranged by you, the registrant, bookings are now open.

Conference Registration includes Welcome Cocktail Hour, Official Opening, morning teas, lunches, afternoon teas, Sunday Banquet and rare items auction, speaker sessions and proceedings book, as well as specialist plant sales, prior to public access, displays and competitions. An **optional extra** will be a tour of the Botanic Gardens and Harbour Cruise luncheon, which can be booked separately. Non-registrant partners may be included at their own expense. (Please see details on web or email Ian, for more information.)

If you are unable to attend all four days, daily registration will be available subject to numbers. *Please check the BSA website for up to date details. (If paying by cheque, please make them payable to 'The Bromeliad Society of Australia')*

Sales: Only registrants are able to sell and those who apply to sell should have enough quality plants to cover 4 days of sales or alternately may wish to sell on the community table, where you can place up to 6 plants at any one time.

Planning is slowly progressing and, as news becomes available, we will update on the website and in this section.

AS ALWAYS these things don't just happen, so please when the time comes, think about **VOLUNTEERING** for a job or two, as we get closer to the big event.

DONATIONS

The Bromeliad Society of Australia Inc. would like to acknowledge, and thank, the Sunshine Coast Society for their 2015 Conference Donation.

As you are aware running a Conference is a very expensive exercise. All donations are greatly appreciated and will be acknowledged in Bromeletter.

Thank you **Sunshine Coast Bromeliad Society**

Plant of the Month Competition

March 2014

Open

1st
2nd
3rd

Judge's Choice.

Ron Farrugia
Ron Farrugia
Phillip La

Till jalisco monticola
Till guatemalensis
Till cyanea 'Paradise'

Open

1st
2nd
3rd

Members' Choice

Ron Farrugia
Ron Farrugia
Sandra Southwell

Till jalisco monticola
Till guatemalensis
Till remota

Novice

1st
2nd
3rd

Judge's Choice

Joy Clark
Joy Clark
Nola McFarlane

Vr correia-araujoi
Till Leopard
Neoregelia Mauve Star (novar)

Novice

1st
2nd
3rd

Members' Choice

Joy Clark
Joy Clark
Nola McFarlane

Vr correia-araujoi
Till Leopard
Orthophytum (unknown)

Margaret Draddy Artistic Competition.

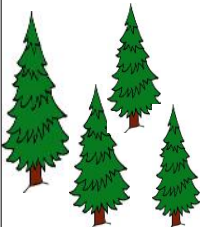
1st
2nd
3rd

Sandra Southwell
Kerry McNicol
Joy Clark

Volcano in Action
Frog on a Log
Fasci Felt

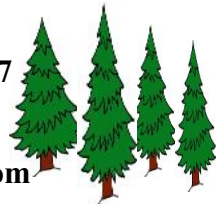
See pp 11,12

PINEGROVE BROMELIAD NURSERY



Ross Little & Helen Clewett
114 Pine Street, Wardell
P O Box 385, Wardell NSW 2477
Phone/Fax: (02) 6683 4188

E-mail
pinegrovebromeliads@bigpond.com



Plant of the Month Competition

April 2014

Open Judge's Choice.

| | | |
|-----|------------------|----------------------------|
| 1st | Caroline Bunnell | Tillandsia Imbrogio |
| 2nd | Robyn Firth | Aechmea Pickaniny |
| 3rd | Caroline Bunnell | Tillandsia cyanea triflora |

Open Members' Choice

| | | |
|------|------------------|------------------------|
| 1st | Caroline Bunnell | Tillandsia Imbrogio |
| 2nd | Michael Ferenczi | Tillandsia multicaulis |
| =3rd | John Cornale | Quesnelia Tim Plowman |
| | John Cornale | Tillandsia magnispica |
| | Ron Farrugia | Catopsis large Mexico |
| | Kerry McNicol | Aechmea Purple Gem |

Novice Judge's Choice

| | | |
|-----|------------|--------------------------------------|
| 1st | Joy Clark | xNeophytum Gallactic Warrior |
| 2nd | Joy Clark | Neoregelia chlorosticta x pauciflora |
| 3rd | Mark Belot | Neoregelia Aquarius |

Novice Members' Choice

| | | |
|------|---------------|--------------------------------------|
| 1st | Joy Clark | xNeophytum Gallactic Warrior |
| 2nd | Kerry Boytell | Neoregelia Lady Leonie |
| =3rd | Mark Belot | Neoregelia Stormy Forest |
| | Joy Clark | Neoregelia chlorosticta x pauciflora |

Margaret Draddy Artistic Competition.

| | | |
|------|------------------|---------------|
| 1st | Sandra Southwell | Easter Garden |
| =2nd | Joy Clark | Mountain Goat |
| | John Cornale | Log on Path |

See pp 11,13

UPDATED SHOW RULES ON WEB.

(a) The printable Show rules and entry form have now been updated on our web-site and can be found on:

<http://www.bromeliad.org.au/news/ShowRules5.pdf>

<http://www.bromeliad.org.au/news/ShowCompetitionEntryForm3.pdf>

or the website; click "Club News", click "1. Australia" and find the links mid - page.

(b) 'Class 15—Mounted Bromeliads' has been changed.

No longer does it include 'mounted Tillandsia'. Any other genera are permitted.

SHOW AND TELL

FEBRUARY 2014

President Ian opened this segment of the meeting by showing a green-leaved plant and asking if anyone had seen one for sale. It is a plant called *Aechmea podantha*, a species. It is extremely rare and, in reality, is probably non-existent in Australia. But you will often see a plant being sold as *Aechmea podantha* and it looks nothing like it. Ian has mentioned this topic before as it is one of the early ones which he tried to trace. Derek, Geoff Lawn and various other experts were involved in it, trying to work out what it really was. Everyone was saying that it has been around for ages but it is not *Aechmea sandler* and does not have a name. Numerous efforts have been made to give it a name and now it is thought that it is more likely a cross between *nudicaulis* and *fasciata*. They are the only guesses people have had. It is still being sold in Queensland as *podantha* but if you have this plant and it is flowering at the moment, you should change the name to an anagram of *nudicaulis*. Len Colgan, from South Australia, who is well known for composing cryptic crosswords, came up with *Aechmea 'Miraculous Find'*.

John Campbell departed from the usual Show and Tell topic of Bromeliads and came up with a branch from a Frangipani tree, which was producing leaves from the centre of the branch instead their usual place at the ends of the branches.

Ron Farrugia brought in a plant which was named *Tillandsia minor* but he has found that it is really *Tillandsia secunda* and wondered if anyone had a similarly named plant which was different from his. Ken Woods agreed that it was *secunda*, so Ron will change the name on the label.

Werner Raff had a problem with a *Canistrum bilbergioides*. It normally has a yellow inflorescence but, at one stage, he immersed it in a bucket of water and the leaves all turned green and continued growing that way.

Warril Evans contributed a group of *Orthophytums* which are producing pups which she has had to tie down by wiring them to the pot to stop them falling off.

Ian commented that *Cryptanthus* are famous for escaping. The leaves will come down and by the end of a day the plant has curled the leaves down even more and the plant has lifted itself up from where you planted it and has tried to move off somewhere else. It is not an accident, it is actually what they try to do, to find some spot away from the mother where they can grow on their own. They don't have legs, they simply curl their leaves up and will pull themselves out of the ground. It is very annoying if you have finished planting out a dozen or so of the pups and next day you will find that they have come out of the soil.

Hint To stop 'escapees', place a loose elastic band around both plant and pot (Thanks Robyn Firth).

Peter Fitzgerald's plant was an *Aechmea fasciata*, very easy to see because of the pink flower. The plant usually produces several pups. They have been crossed with other plants all over the place for a long time. There is one in Europe, named 'Morgan', which does not have any thorns on the leaf edges. There is a lot of variation in them.

Terry Davis brought in several plants from his large collection, beginning with a *Tillandsia paleacea* small brown form (dead) asking advice from the members on what fertilizer to use to get it growing better. Next, a *Neoregelia 'Shelldance'* and a possible *Neoregelia 'Manoa Beauty'*, one that was just a bare stem that had had offsets removed, the other having been chopped off at the base and thrown onto the vegetable garden for compost had shown remarkable tenacity with some new shoots coming from the bases; *Racinae reducta*, a plant with good-looking leaves and a long spike; *Tillandsia melanocrater* that had previously been a variety of *Tillandsia tricolor var melanocrater*, now named as a species in its own right and is said to differ from *Tillandsia tricolor* in that the inflorescence is more down into the foliage than *T. tricolor*; another plant that was previously sold as *Tillandsia tricolor* large form is said to be *Tillandsia botteri* and is similar to *T. rodrigueziana*

The last item concerned a nasty little problem for bromeliads, it goes under the name of 'Black Spot' or 'Fly Speck Scale'. There is a lot of it around Sydney and control mainly involves isolating an affected plant and maintaining plenty of air space around it.

Elaine Fletcher and Maureen Johns spoke about it and of the extent to which it can propagate itself in a collection. Do not flick the insects on to the floor of your shadehouse; if you do you will probably also be flicking off the eggs of the scale as well. They are very mobile and can spread. They are covered in wax which effectively provides them with a suit of armour which is very difficult to penetrate. A good method of control is a systemic insecticide, such as Confidor.

If you use a contact spray it may not go through the layers of wax. The Confidor treatment needs to be repeated every week or ten days so that you catch the insects which have been moving around and those which have hatched since the previous spray.

Soapy water applied with a paint brush after thoroughly washing the plant is a good alternative if you don't want to use chemicals, but you have to physically remove every insect from the plant. It is one of those insects you really don't want. When Maureen buys a new plant, she sprays it as soon as possible and quarantines it until she is satisfied that it can take its place in her collection. This may take up to six months.

To see more on these pests see the article later in Bromeletter.

SOME PESTS OF BROMELIADS

Reprinted in main from

FNCBSG Newsletter April 2011

Grasshoppers, grubs, caterpillars and snails are large pests and easily seen. These can usually be manually picked off the brom. Other smaller pests such as flyspeck scale (black dots and yellow spots), other scales (brown or yellow), and fungi (white to black) are still easy to see and really detract from the plant's appearance. Mealy bugs occur on leaves and roots. They appear as a white powder on the roots and leaves and inside the pot.

For the scales and mealy bugs, chemicals such as Malathion, Dimethoate (caution needs to be taken if using this product), or Confidor, can be used and followed with a granular systemic insecticide such as MeritA or Disulphotin. Don't use white oil which takes four to six days to break down, and is detrimental to bromeliads since they breathe and feed through their leaves. The oil blocks the stomata and the trichomes. Take care with Eco oil, as the jury is still out on it for bromeliads.

Canola oil spray is probably the least harmful of all the chemicals as it only takes one to one - and - a - half days to break down. If the Canola Oil spray doesn't work on your particular scale you could try using "Confidor" which is a systemic insecticide with an active constituent of IMIDACLOPRID.

One of the most common causes for scale is overcrowding, something we've all done from time to time. Overcrowding will restrict air circulation and create a good breeding ground for this type of scale. The best prevention is to increase the space between plants and let them breathe.

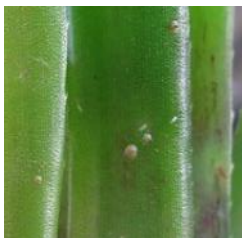
Soft scale can be easily eliminated. Spray the affected leaves with a mixture of water and dishwashing liquid and then scrub them with a bottlebrush or a dishwashing brush. For fungal problems flush with water mixed with a fungicide, dry out, follow up with two or three fungicide sprays over a couple of weeks.

Bob's Canola Spray is a little complex, with specific instructions on mixing and use. This will be reprinted in a future Bromeletter.

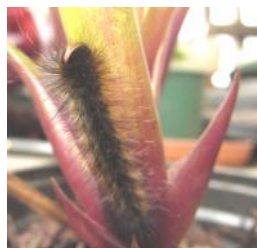
Some Pests of Bromeliads (see S&T and article p10)



Fly Speck Scale



Common Scale



Red headed hairy bromeliad loving caterpillar

Margaret Draddy Artistic - March



1st Sandra Southwell
'Volcano in Action'



2nd Kerry McNicol
'Frog on a Log'



3rd Joy Clark -
'Fasci Felt'

**A
P
R
I
L**



1st Sandra Southwell
'Easter Garden'



3rd John Cornale
'Log on Path'



2nd Joy Clark
'Mountain Goat'

PLANT OF THE MONTH MARCH 2014.



Till. jalisco-monticola 1st. Open
Judges / Members. Ron Farrugia



Till. corriea arraujai 1st Novice
Judges/Members Joy Clark



Till. guatemalensis 2nd Open
Judges / Members. Ron Farrugia



Till. Leopard 2nd Novice
Judges & Members Joy Clark



Till. mooreana
3rd Open
Judges / Mem-
bers
Phillip La



Neo. Mauve Star NOVAR 3rd Novice.
Judges /Members.
Nola McFarlane

PLANT OF THE MONTH APRIL 2014



Till. Imbroglia 1st Open Judges & Members Caroline Bunnell



Aech Pickaniny 2nd Open Judges. Robyn Firth



Till. cyanea Triflora, 3rd Open Judges Caroline Bunnell



Till. multicaulis 2nd Open Members Choice

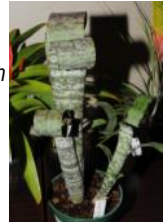


Catopsis large Mexican Ron Farrugia

Till. Magnispica, John Cornale



Ques. Tim Plowman John Cornale



Aech. Purple Gem Krrery McNicol



4 plants were = 3rd Open Members Choice

xNeophytum Galactic Warrior 1st Novice Judges & Members Joy Clark



Oops!! Sorry, We seem to be missing a photo! *Neo. Lady Leonie* 2nd Members Choice, Kerry Boytell

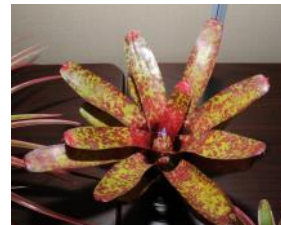


Neo. chlorosticta x pauciflora 2nd Judges =3rd Members Joy Clark



Neo. Aquarius 3rd Judges Mark Belot

Neo. Stormy Forest =3rd Members Mark Belot



Aechmea guarapariensis



See article by Derek Butcher, p 20

Photo: Peter Franklin

Catopsis berteroniana

Arguably a carnivorous bromeliad



John's 3 Catopsis plants (Photo: Sharon Song)



Catopsis



Catopsis mooreniiana

Photos without credits are from BSA Photo Index and Editor's albums



Catopsis Large Mexican



Catopsis subulata, easily recognised by its bulbous tank

SHOW & TELL

MARCH, 2014

John Cornale brought in three *Catopsis* plants all in flower, ranging in size from around 20cm to around 60cm including the tall branched inflorescence of each. Each had similar leaves and flower spikes, branched with exquisite creamy lemon flowers (=so tiny you can hardly see them in gardeners 'speak'). He was not sure of their names and as they 'could' be three of many, was seeking help.

Thanks to Sharon for the picture (p14) and the post on Facebook, which has shed a little light. The two smaller plants are a bit of a mystery still (the smallest **could** be *C. hahnii* or *C. sessiliflora*), but the large plant thanks to comments by Rowan Wilkes and Peter Tristram is very **likely** to be the male *Catopsis paniculata*.

John's 2nd plant to be named was Neo. burle-marxii ssp meana.

Catopsis

Reprinted in part from an article by Bob Reilly of Queensland & from Newslink, the journal of The Illawarra Bromeliad Society (Jan 2014)

Catopsis is a genus of bromeliad which is spread from Florida, Mexico, the Greater Antilles, through the West Indies, Trinidad to Central and northern South America. The genus was described in 1864, and the word "catopsis" is derived from the Greek word meaning view. It probably refers to the fact that, in their natural habitat, they are usually found growing on trees. (However, they also sometimes grow on rocks).



Range
(from Wikipedia)

continued p 17

COLLECTORS' CORNER

BROMELIADS – a large colourful range of Bromeliads, both species and hybrids of many genera

Includes a very large range of Tillandsias.
A mail order list of Tillandsias is available upon request.

We also specialize in orchids, cacti, succulents, hoyas, bonsai and carnivorous plants, PLUS gems, fossils, natural history, books and much MORE!



810 Springvale Rd., Braeside
VIC 3195

PH: 03 9798 5845, FAX: 03 9706 3339

E-MAIL: sales@collectorscorner.com.au

WEBSITE: www.collectorscorner.com.au

Open 9am-5pm 7 days a week.

M. J. PATERSON

212 Sandy Creek Road,
GYMPIE QLD 4570

♣ Large Range of Bromeliads For Sale, especially our own hybrid *Neoregelias*, *Tillandsias*, *Cryptanthus* and *Vrieseas*
Do call in if you are up this way.

But, please, phone first.

Phone/Fax: (07) 5482 3308.

E-mail: wm_paterson@bigpond.com

Also available

Bromeliad Hybrids. "For My Own Satisfaction" Book 1. Neos.

"For My Own Satisfaction" Book 2.

Crypt., Til., Vr., etc.

Books available on-line at
www.bromeliad-hybrids.com

MIDHURST BROMELIAD NURSERY

Specialist Growers of Tillandsias

And Other Genera.

Hard grown to suit all Australian conditions.

Wholesale and Mail Order only.

**WRITE FOR FREE PRICE LISTS OF TILLANDSIA
AND OTHER GENERA TO:**

P.O. Box 612,

Hurstbridge, Vic. 3099

Phone: (03) 9718 2887.

Fax: (03) 9718 2760

FOREST DRIVE NURSERY

Prop: Peter Tristram.

C/- P.O. BOX 2, BONVILLE NSW, 2441

(a few miles south of Coffs Harbor.)

Specialising in SPECIES and VARIEGATES

from mostly imported stock.

TILLANDSIAS to titillate the most discerning fanciers.

Beautiful VRIESEAS (including 'silver' species).

GUZMANIAS, AECHMEAS, NEOREGELIAS, etc.

Visitors welcome—phone first: (02) 6655 4130 A.H.

Send S.A.E. for MAIL ORDER list of quality plants.

Catopsis (continued from p 15)

There are 18 species and no registered hybrids. Andreas (2005) aptly summarises a number of the plants' attributes:

"...The leaves are soft, spineless, and often described as waxy with "chalky" scurfing (the powdery substance often visible on bromeliad leaves). The flowers are white or yellow, the inflorescence are simple or branched, erect or pendant. The seed capsules of some catopsis turn yellow or orange, and stay in colour for some time..."

Some catopsis species are *dioecious*.

This means the male and female "elements" of a "normal" flower are on separate plants. Thus, a given plant will have either the pollen-bearing elements, or those resulting in seed production, but not both.

Some species, for example, *C. morreniana*, are usually dioecious, but have some instances of "perfect" (that is, flowers with both male and female elements) flowering plants.

The reverse arrangement also exists, for example, with *C. berterionana*. In other cases, for example *C. nutans*, whole populations (groups of plants in a specific location) are either entirely dioecious or perfect-flowered.

Catopsis berterionana has adaptations which allow it to trap and break down insects so they can be used for energy and growth (i.e. *carnivorous* in nature). (Other such carnivorous bromeliads being *Brocchinia hechtii* and *B. reducta*.)

C. berterionana has loosely joined leaves forming several tanks where rain-water collects and insects fall into, because of the slippery leaves. This species also likes to grow high in trees or on bare branches where it colours to a bright yellow. Because the habitat differs so much to other catopsis (as it grows high above the canopy), it is an indication that leaf litter is not its main source of nutrients. It is most likely insects.

The article in 'Newslink' was reprinted, with permission, from a website, in turn written by Melanie Dearing. It may be of interest, to some, to visit this website : <http://www.bromeliads.info/archives/carnivorous-bromeliads>

JUDGING SCHOOL

The next judging school will be held later in the year. It is a 3 year course, meeting usually four times a year, with the requirement that a student judge own at least 50 different bromeliads in at least 10 different genera

Anyone who might be interested in joining this group may contact Eileen on

02 9544 4726 or e-mail stagra7@ozemail.com.au

Member's Efforts Recognised

*This year, the **Royal Horticultural Society of NSW Medal** was awarded to a very hardworking selfless member of our society, **Werner Raff**.*

Werner has been tireless in his work 'behind the scenes' at meetings and shows, whilst taking a personal interest in the welfare of his fellow members. In particular, he has been in constant contact with Margaret Draddy during her convalescence. Keeping all informed of her progress and getting her to meetings when possible.

Congratulations Werner!

A Certificate of Appreciation

was also passed on to Margaret Draddy (via Werner) for her generous support of the society over the years, and friendship to all its members."



From the EDITOR:

In an endeavour to 'synchronise' our 'Show and Tell' segments from our meetings with articles relating to questions and answers during this segment, the **April 'Show and Tell'** will be carried over to our next Bromeletter, as there were some very interesting snippets gleaned which will interest many readers.

Lastly:

Thankyou to **Eugene** for his kind words in the last Bromeletter. I know what a great job Eugene has done over the past **14 years**, and it will be very hard to try to fill his boots. I can't imagine lasting as long as he did, in the position as, even this first effort has me wondering what I have done!

So please bear with me, as there may be a few teething problems; I hope you will be a little forgiving of me to begin.

Don't forget that this is **your** journal. Anything that interests you will likely interest others. If you have any stories, tips or comments on growing these beautiful plants, please email me at the address on p2 ,or post to the Secretary at the address on p2.

MEET SOME NEW FACES!



WELCOME TO NEW MEMBERS.

We continue to attract new members into the Society and we would like to welcome
Diane Drew who joined in April.

Diane is the latest to come to admire, enjoy and learn about the wonderful world of Bromeliads.

Treasurer's Report – (February):

Treasurer Alan Mathew gave the following details regarding our
Operating Account to February 28, 2014:

| | |
|---------------------------------|-------------|
| Brought Forward | \$11,202.66 |
| Plus Income: | 3,342.15 |
| Less expenses | 1,021.45 |
| Bank Statement as at 28/02/2014 | \$13,527.76 |

Treasurer's Report – (March):

Treasurer Alan Mathew gave the following details regarding our
Operating Account to March 31, 2014:

| | |
|---|-------------|
| Brought Forward | \$13,527.76 |
| Plus Income: | 1,397.82 |
| Less expenses (includes Rent and Show Flyers) | 4,598.90 |
| Deficit for Month | 3,201.08 |
| <i>Add unrepresented cheques</i> | 1,430.00 |
| Bank Statement as at 31/03/2014 | \$10,789.64 |

Aechmea triticina to *guarapariensis* to *roberto-seidelii* -

UPDATE 02/14 ... and now back to

Aechmea guarapariensis

Derek Butcher

A plant was imported to Australia from Seidel in the 1980's by Len Colgan in Adelaide that was called *Aechmea triticina*.

In the 1990's Derek Butcher translated many original German and Portuguese botanic descriptions, and realised the Australian plant was more likely *Ae. guarapariensis*.

In the late 90's Bruno Silva and Elton Leme re-discovered the real *Ae. triticina* (with vividly rose to lilac petals).

In 2007 Tania Wendt published her conclusion that *Ae. guarapariensis* was actually the previously published *roberto-seidelii* and Australians were asked to change their labels to this.

This is updated again (February 2014). **See details on our website, Detective series, DD0508.**

From Eric Gouda... "It is unclear how to look at the description in Smith & Downs of *Aechmea triticina*, but I will keep *A. roberto-seidelii* as well as *A. guarapariensis* as separated species. Both are from total different biome and much different in size, one epiphyte and one terrestrial and the large apical coma in the inflorescence of one of the species are good enough for me."

From Derek Butcher... "**In other words we only seem to have *A. guarapariensis* in Australia.** We do know we don't have *A. triticina*, and our plant comes out between the descriptions of *roberto-seidelii* and *guarapariensis* but we do not know where it was collected in the wild. It seems safer to use *A. guarapariensis*.

Tania Wendt has not sold her idea to Eric and he feels it is safer to keep the names apart from a Botanist's point of view.

The definitions of the 3 have not changed, it is the interpretation that has varied.

See photographs p 14.

Vale - Fred Thompson

Keith Ryde

- Fred was a stalwart of both The Central coast of NSW Bromeliad Society and the this society, the BSA.
- Fred passed away on Sunday 16 March 2014. He was 90 years of age. The service was held at Pinegrove Memorial Park, Minchinbury.
- Ruby and Keith attended.
- When Fred lived at Auburn with his wife Phoebe and son Bill, he had an extensive bromeliad collection. His great love was *Cryptanthus*, so much so that an earlier conference, a visiting international authority visiting Fred's home, commented that his *Cryptanthus* were among the best he had seen.
- It was at Fred and Phoebe's home that the book 'Growing Bromeliads' was discussed and organised, and subsequently driven by the then President, Ruby.
- Fred had joined the Royal Navy (UK) in 1942 and was decommissioned in 1946. During that time he served on the aircraft carrier 'Indomitable' which was bombed repeatedly and continually limped to the east coast of the USA for repairs. You could say he served his country of birth(UK) well.
- We will miss you, Fred.

A NOTE:

Regarding the article 'True full-sun bromeliads'.

This article was written by a grower living in South Florida, USA, where climatic conditions are vastly different to many areas in Australia. Humidity plays a big role in whether or not plants can be grown 'in full sun'. Growers in greater Sydney can grow some of these plants in the sun, whereas growers further inland or in areas of less humidity will have the same plant 'burnt to a crisp'.

If you are considering 'testing' this tip, please do so cautiously.
Ed.

OFFICE - BEARERS:

| | |
|---------------------------|----------------------------|
| Public Officer | Ian Hook |
| Book Sales | Graham MacFarlane |
| Librarian | Helga Nitschke; Lydia Hope |
| Catering | Peter Fitzgerald |
| Raffle Sales | Ron Farrugia |
| Pots, Labels, etc - Sales | Terence Davis |
| Plant of the Month | Terence Davis |
| Show Registrar | Ian Hook; Terence Davis |
| Show Co-Ordinator | Robyn Firth |
| Purchasing Officer | Joy Clark |
| Show Display | |

LITERATURE

| <u>TITLE</u> | AUTHOR | PUBLICATION COST (\$A) |
|---|--|---------------------------|
| Growing Bromeliads - 3rd. Edition. | Bromeliad Society of Australia Inc. | \$10.00 |
| Bromeliads for the Contemporary Garden. | Andrew Steens | \$35.00 |
| Bromeliads, A Cultural Manual.(Rev.) Edition 2007) | BSI | \$5.00 |
| Bromeliads- The Connoisseur's Guide, 2007. | Andrew Steens | \$20.00 |

For Mail Order delivery cost, please contact:

librarian@bromeliad.org.au

Or write to:

P.O. Box 340, Ryde. 2112

For the full list of Literature for sale, go to
<http://www.bromeliad.org.au/Contacts/BSALibrarian.htm>



SEED BANK

The Seed Bank provides a service to members of the Bromeliad Society of Australia, supporters of the Seed Bank and other interested enthusiasts, for the collection and distribution of all types of Bromeliad seeds from local and overseas sources.

Seeds cost 50¢ per packet for Members and Seed Bank supporters (plus postage) or \$1 per packet (plus postage) for all other enquiries.

Enquiries for seeds should be directed, for the time being, to

Terry Davis

(02) 9636 6114 Or 0439 343 809

The following Seeds *are now available*:

Aechmea rubens, *Aechmea warassii*, *Alcantarea geniculata*, *glaziouana* and *vinicolor*, *Guzmania sanguine* (Costa Rica form), *Till. balbisiana*, *Till. xfloridana*, *Till. Juncea*, *Till. foliosa*,
Till. ionantha, (Jan 2014), *Dy. encholirioides rubra* (Feb 2014).

Thanks to Bob Hudson, Qld; Chris Larson, Maurice Kellett, Vic; Laurie Mountford, Werner Raff, Laurie Dorfor, Stan Olejnik and Terry Davis, NSW, for their valuable contributions to the Seed Bank.

Thank you, Supporters of the Seed Bank.

A continued supply of fresh seed is constantly required by the Seed Bank to ensure that the Bromeliad needs of tomorrow will be met.

MEMBERSHIP APPLICATION:

ANNUAL SUBSCRIPTION: Renewal due **January 1st** for membership year January to December.

Membership: Australia A\$20

Overseas Membership: Asia/Pacific Zone A\$30. Rest of the World A\$35.

New Membership requires a \$5 joining fee, plus Annual Subscription. (Those joining after October 1st are covered for the following year.)

Note: Un-financial members must add \$5 rejoining fee when re-applying for membership.

Members will become 'un-financial' if renewals have not been received by the end of our Autumn Show.

POSTAGE

PAID

**PRINT
POST**

PP246537/00007



***If undelivered, return to:
Bromeliad Society of Australia
P.O. BOX 340, 2112
Ryde NSW
BROMELETTER
Print Post Approval
No. PP100001193.***