



BROMELETTER

THE OFFICIAL JOURNAL OF THE BROMELIAD SOCIETY OF AUSTRALIA INC.

Issue: Volume 54 Number 1 - January - February 2016.

CONTENTS

Management Details	2, 3, 7, 8, 12, 22
Plant of the Month Competition, MDAC October 2015	4, 5
Meeting News October, November, December 2015	5, 6, 17, 18
Harvesting and growing aerial offsets from Orthophytum by Alan Herndon BSI	9 - 11, 14 - 16
NEW VENUE !	12
Plant of the Month, MDAC November 2015	13, 17
Plant of the Month, MDAC December 2015	18, 19
Vale Robyn Firth	20
New Members	22
Seed Bank	23



BROMELETTER is published bi-monthly at Sydney
by

The Bromeliad Society of Australia Incorporated.

**Deadlines for articles: 15th of February, April, June,
August, October and December, To allow for
publishing in the first week of March, May, July,
September, November and January.**

REMINDER

**Membership renewals are
due 1st JANUARY each year**

**The Annual General Meeting of the
Bromeliad Society of Australia Inc. will be held
on Saturday 13th February 2016 at our NEW VENUE see p.12.**

COMMITTEE

President	Ian Hook (ianhook1@bigpond.com)	0408 202 269
Vice President (1) & Editor	Meryl Thomas (info@aromagardens.com.au)	0401 040 762
Vice President (2)	Ron Farrugia	02 9533 2546
Secretary	Patricia Sharpley	0439 672 826
Treasurer	Alan Mathew	02 9516 5976
Member Secretary	Kerry McNicol (membsec@bromeliad.org.au)	0439 998 049
Member	Helga Nitschke	02 9624 1528
Member	Eugene Morris	02 9743 6443
Member	Bob Sharpley	0439 672 826
Member	Joy Clark	02 4572 3545

BROMELIAD SOCIETIES AFFILIATED WITH THE BROMELIAD SOCIETY OF AUSTRALIA INC.

Bromeliad Society of Victoria.

The Secretary, P.O. Box 101, Darling. Vic. 3145

Caboolture & Districts Brom. Society Inc.,

The Secretary, P.O. Box 748, Caboolture Qld. 4510.

Cairns Bromeliad Society Inc.

The Secretary, P.O. Box 28, Cairns. Qld. 4870

Gold Coast Succulent & Brom. Society

The Secretary, P.O. Box 94, Southport B.C., Southport Qld. 4215.

The Hunter Bromeliad Society Inc.,

C/- 59 Barton St, Mayfield. NSW 2304.

Townsville Bromeliad Study Group,

C/- Mrs K Greenway, 10 Holstein Place, BLACK RIVER. Qld 4814.

Material for Bromeletter - address to:

e-mail: editor@bromeliad.org.au

or info@aromagardens.com.au

All other correspondence to:

The Secretary, Bromeliad Society of Australia Inc.

PO Box 340, RYDE NSW 2112

Please Note

**BROMELIADS will be on sale
at the Club from 12.30 p.m.
before the monthly meeting.**



GREYLINGS ATTORNEYS

**Wills | Estate management | Asset protection
Conveyancing | General advice**

Ph: 92640676

4/914 Military Road Mosman Above the Burger Shed

Life Members

Grace Goode O.A.M. Eugene Morris
Bill Morris Ron Farrigia
Ruby Ryde Graham McFarlane

BSA Website
www.bromeliad.org.au
president@bromeliad.org.au
President Ian's Mobile:
0404 202 269

Treasurer's Report

Treasurer Alan Mathew gave the following details regarding our

Operating Account to 31 October 2015

Brought Forward	\$ 34747.60
Plus Income	\$ 1092.87
Less Expenses	\$ 1854.81
Bank Statement as at 31/10/15	\$ 33985.66

Operating Account to 30 November 2015

Brought Forward	\$ 33985.66
Plus Income	\$ 2412.25
Less Expenses	\$ 1823.32
Bank Statement as at 30/11/15	\$ 34574.59

Interesting Websites

Bromeliads in Australia <http://www.bromeliad.org.au/>
Encyclopaedia of Bromeliads <http://botu07.bio.uu.nl/bcg/encyclopedia/brome/>
BSI Cultivar Register <http://registry.bsi.org/>
Florida Council of Bromeliad Societies <http://fcbs.org/>
Facebook users, can search for the group "Planet Bromeliad" and the associated Planets and Moon sub-groups for Bromeliad enthusiasts.

Plant of the Month Competition October 2015

(photos p.5)

Open**Judge's Choice & Members Choice**

1st	<i>Dyckia fosteriana</i> 'Silver'	Carolyn Bunnell
2nd	<i>Vriesea</i> 'Rosa Moreena'	Helga Nitschke

Novice**Judge's Choice**

1st	<i>Tillandsia</i> 'Bergos'	Lindsay Munro
2nd	<i>Tillandsia recurvifolia</i> var. <i>subsecundifolia</i>	Lindsay Munro
3rd	<i>Tillandsia</i> 'Houston'	John Schembri

Novice**Members' Choice**

1st	<i>Tillandsia</i> 'Bergos'	Lindsay Munro
2nd	<i>Tillandsia</i> 'Houston'	John Schembri
3rd	<i>Tillandsia aeranthos</i>	Lindsay Munro

Margaret Draddy Artistic Competition October 2015

(photos p.5)

1st	"Hummingbirds"	Carolyn Bunnell
2nd	"Impending Inferno"	John Schembri
3rd	"Tillandsia on Wood"	Ian Hook

Meeting News October 2015

(photos p.6)

Stan Hopping opened our Meeting News with a plant that was either a *Dyckia* or an *Orthophytum*. Ian observed that the leaves are thick and succulent, there was a stem and the leaves didn't emerge at the very base of the plant. Stan noted that the pups also come out close to, or at, ground level. Terry identified the plant as *Orthophytum glabrum*.

John Schemberi talked about the differences and similarities between *Aechmea* 'Candy Stripe' and *Aechmea* 'Red Ribbon', his plant has a really thin scape and red sepals. He would like to see another member's *A.* 'Candy Stripe' so as to compare it with his plant.

Ian Hook advised that an *Aechmea* that has in the past been sold at our shows as *Aechmea roberto-seidelii* has now had a name change to *Aechmea guarapariensis*. Please update your name tags.

Mark Belot brought in a standard *Aechmea* 'Mary Brett' and another unlabelled plant that he suspected might be the yellow form of same. According to Derek Butcher's article there is also a yellow form (clone), another one with purplish petals and another that is compound in structure. Ian suggested that it might be one of Ken Woods' random hybrids with *recurvata*. Mark found that researching the plant was difficult because of the variation in descriptions and documentation.

Plant of the Month Competition October 2015 Photos



Dyckia fosteriana 'Silver'



Vriesea 'Rosa Moreena'



Tillandsia 'Bergos'



Tillandsia recurvifolia var. *subsecundifolia*



Tillandsia 'Houston'



Tillandsia aeranthos



"Hummingbirds"



"Impending Inferno"



"Tillandsia on Wood"

Artistic October 2015



Carolyn Bunnell awarded the Spring Show Grand Champion, Show Reserve Champion, & Show Species Trophies.



Elaine Fletcher awarded Spring Show Novice Champion Trophy.

Meeting News October 2015 Photos



Aechmea 'Mary Brett' & some unidentified plants



Orthophytum glabrum

Meeting News November 2015 Photos



Nidularium procerum ?



Tillandsia harisii



unnamed *Neoregelia*

Meeting News December 2015 Photos



T. fasciculata group



Aechmea nudicaulis



Tillandsia secunda



assorted mini *Neoregelias* from Don Roberts

BROMELIAD SOCIETY OF AUSTRALIA INC.



ANNUAL GENERAL MEETING & ELECTION OF OFFICE BEARERS.

13TH FEBRUARY 2016

NOTICE IS HEREBY GIVEN

that the Annual General Meeting of the Bromeliad Society of Australia Inc. will be held on Saturday 13th February 2016 at the Federation Pavilion, Castle Hill Showground at 1.00pm

At each AGM "all elected office bearers ... shall retire and the meeting shall elect members to fill the positions (Rule 25) as set out in rule 17" (Rule 17 states that the Management Committee of the Society shall not be less than seven[7] and not more than twelve[12] members [called Office Bearers], the President, Vice Presidents[2], Secretary, Treasurer and Editor shall be ex-officio members of the committee.)

Candidates for each position on the Committee must be nominated and seconded, such nominations to be signed by each nominator and nominee and to be in the hands of the secretary at least twenty-one [21] days before the AGM. The last date for the receipt of nominations by mail will be:

Friday 22nd January 2016

Only members whose subscriptions are fully paid up for 2016 will be eligible to vote (Rule 32)

Members wishing to stand for positions on the Executive Committee and other offices within the Society, should obtain the relevant form from the Secretary. They should ensure that the form is completed appropriately and in the hands of the Secretary not later than Friday 22nd January, 2016. Or Saturday 23rd January 2016 if delivered by hand.

AGENDA: Minutes of the previous Annual General Meeting
President's Annual Report
Treasurer's Annual Financial Report
Election of Officers
Matters arising from the above.

General Business will be discussed at the Open Meeting held on the same day, following the conclusion of the AGM.

OFFICE-BEARERS

Book Sales	Ian Hook
Librarian	Graham MacFarlane
Catering	Helga Nitschke, Lydia Hope
Raffle Sales	Peter Fitzgerald
Pots, Labels, etc - Sales	Ron Farrugia
Plant of the Month	Terence Davis
Show Registrar	Terence Davis
Show Co-ordinator/s	Ian Hook, Terence Davis
Purchasing Officer	Kerry McNicol
Show Display	Joy Clark

MEMBERSHIP APPLICATION

ANNUAL SUBSCRIPTION: Renewal due January 1st for membership year January to December.

Membership: Australia A\$25

Overseas Membership: Asia/Pacific Zone A\$40. Rest of the World A\$45.

New Membership requires a \$5 joining fee, plus Annual Subscription.
(Those joining after October 1st are covered for the following year.)

Note: Un-financial members must add \$5 rejoining fee when re-applying for membership.

Members will become 'un-financial' if renewals have not been received by the end of our Autumn Show.

MAIL ORDER PAYMENTS BY MASTERCARD / VISA.

(Subject to A\$10.00 minimum.)

Members using Mastercard or Visa mail order facility should provide the following details, printed clearly in block letters, on a separate sheet of paper:-

- Name and address of MEMBER.
- TYPE of card (e.g. Visa, Mastercard)
- CARDHOLDER name details, as shown on card.
- Mastercard/Visa number and expiry date.
- CARDHOLDER signature (essential).
- Payment details (membership renewal, book purchase, postage, etc.) with \$A amounts for each item.

Harvesting and growing aerial offsets from *Orthophytum*

by Alan Herndon reprinted from BSI Journal 65(2) April - June 2015

Among the species of *Orthophytum*, one of the largest recognizable groups is *Orthophytum* subcomplex *disjunctum*. To over-simplify, these are the species that produce elongate inflorescences with specialized flower-bearing structures that look somewhat like small cones with their tightly spiraled, thick, stiff, usually recurved floral bracts (Fig. 1 p.11). These cones are always formed at the top of the aboveground stem, and in many cases they also appear as axillary branches from leaf-like structures that are technically primary bracts. With many species in the complex, it is common for offsets to be produced at the apex of both the lateral and terminal cones.

Among bromeliads, the resumption of vegetative growth at the tip of a fully differentiated inflorescence branch appears in some species of *Orthophytum* and most species/cultivars of *Ananus*. In a broader view, this resumption of vegetative growth from a fully developed inflorescences is quite rare.

When vegetative offsets are produced from these cones of the *disjunctum* subcomplex, they provide an easy method for propagating the species as long as you follow a few simple rules, based on the growth pattern of species within this *subcomplex*.

One important thing to realize is that plant growth in the *disjunctum* subcomplex takes place in two separate phases. In the first phase, the stem is typically buried under the soil, produces roots and closely spaced leaves that (when present) form the basal rosette. Basal vegetative offsets are produced from buds in the leaf axils during this phase of growth. Depending upon the species involved, these basal offsets may appear early in the growth of the plant and show up long before the first open flowers are produced (*O. conquistense* is a most dramatic example of this). In other species, such as *O. horridum*, basal offsets often do not appear until much later in the growth cycle. This structure is morphologically the true 'stem' in the *disjunctum* subcomplex, but there is such a long history of confusion in the naming of the structures produced during the two phases of growth that I will refer to this by the more descriptive term: 'underground stem'. Later on, it will become clear that an 'underground stem' is not always underground.

A second phase of growth starts once the 'underground stem' reaches sufficient size, and begins to form a single 'above-ground stem' (Fig. 2, p.11) that is usually smaller in diameter than the underground stem and frequently tapers as it elongates. This above-ground stem never produces roots, usually elongates rapidly with widely separated nodes, never produces offsets in the leaf/bract axils, and produces the flower-bearing

cones. Another distinction that is not evident most of the time is that the above-ground stem has a much more limited life span than the underground stem. Once the flowers have all bloomed on an above-ground stem, it starts to die.

Once the above-ground stems have turned brown and shriveled, you can see the still live tops of the underground stems they were attached to, at ground level (Fig. 3, p.11). The rate of death may be rapid or slow depending on the species, but even when the aboveground stem has died completely, the underground stem remains alive for an extended period. When offsets are produced on these aboveground stems, they are only produced at the tips of the flower-carrying cones.

As you might imagine, there are many variations on the simplified picture presented above. One extreme variation is found in *Orthophytum triunfense* where the internodes on the above-ground stem are relatively short and the floral bracts are neither thick nor stiffly recurved. You will see that there is no observable cone in either Fig. 2 or 3. This species was described in detail in a previous issue of the BSI Journal (Vol 64, Issue 4). Another extreme variation is found in *O. sucrei* where the flowering structure is as far from a cone in appearance as you can imagine.

As described above, the flower-bearing cones are usually composed of tightly packed, stiff floral bracts that can look superficially like a basal rosette (Fig. 4, p.11). These cones, however, cannot produce roots. You can plant as many as you want in perfect conditions, and you will never get a new plant. You can tell when you are still dealing with floral bracts because the sepals of the flower subtended by each bract are always visible (Fig. 5, p.11) although they may not be conspicuous if they are the same color as the floral bracts.

If you see these sepals near the top of the 'offset' you just collected, you are much too early. You have to wait for the true offsets to develop before thinking about harvest. The true offsets have the same coloration and pubescence as the leaves of the basal rosette and are almost always easily distinguishable from the floral bracts on that basis even when they have only a few leaves that barely exceed the floral bracts in length. (If the leaves of the basal rosette are dead by the time you are looking for offsets, try using the color and pubescence of the leaf-like structure subtending the cone as a guide.)

In the rare cases where the leaves of the offset are not clearly different from the floral bracts in color and texture, you can still depend on the observation that each leaf of a small offset grows larger than the previous leaf. Once you see a few leaves significantly larger than the underlying floral bracts, you know you are dealing with an offset.

Harvesting and growing aerial offsets from *Orthophytum* Photos by Alan Herndon



Figure 1. Flower-bearing cones typical of *Orthophytum subcomplex disjunctum* on a robust cultivated plant of *O. alvimii*. There is a well-developed aerial offset growing from the tip of the terminal cone.

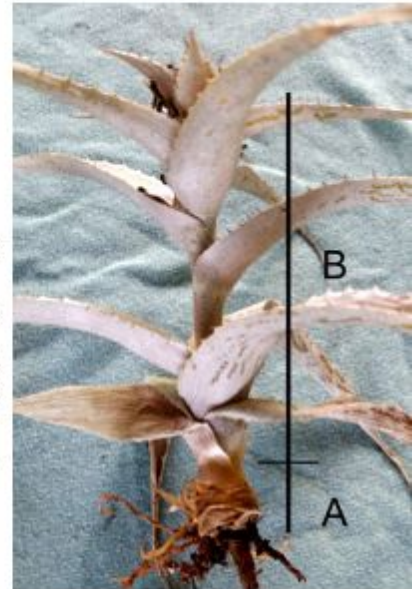


Figure 2. Post-flowering plant of *Orthophytum triumfense*. Dead lower leaves have been removed to allow you to see the usually concealed underground stem (A) below the above-ground stem (B).

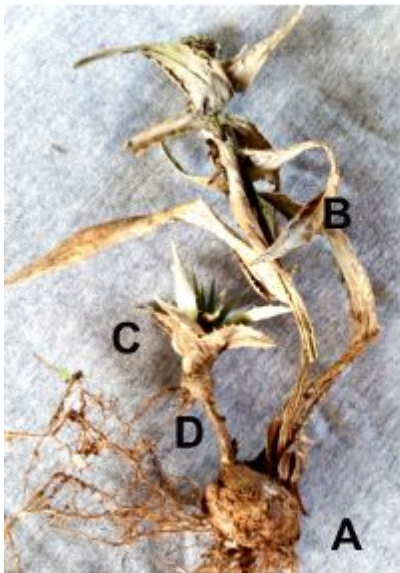


Figure 3. *Orthophytum triumfense* with (A) live underground stem, (B) shrivelled above-ground stem, and (C) a basal offset attached to the underground stem by a narrow stolon.



Figure 4. Close-up of a flowering cone from a large cultivated *Orthophytum* with broad silver leaves. This plant is usually sold under the incorrect name *O. disjunctum*.



Figure 5. The protruding sepals are more apparent on this *Orthophytum lymaniana* because they contrast in color with the floral bracts.



Figure 6. Several aerial offsets are present on this *Orthophytum magalhaesii* inflorescence. The large offset was produced by the terminal cone, and is already large enough to produce its own above-ground stem.

MEETING VENUE AND TIME
1:00 pm SECOND SATURDAY OF EACH MONTH

January 9th- News, Sales, Raffle, Competitions.
OUR LAST MEETING AT THE BURWOOD R.S.L. CLUB,
 Cnr. Shaftesbury Road and Clifton Avenue, Burwood.
 in the First Floor Conference Rooms /Auditorium.

February New Venue

February 13th- AGM, News, Sales, Raffle, Competitions.

AT THE FEDERATION PAVILION CASTLE HILL SHOWGROUND

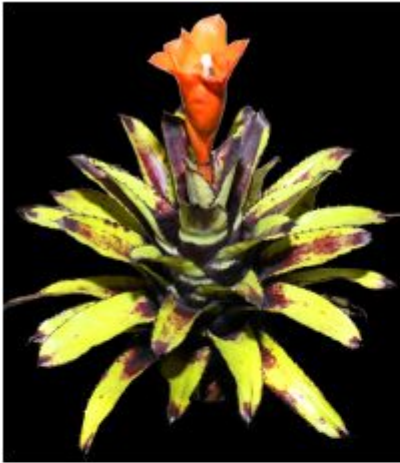
GPS: -33.725349, 150.984731

Android: <https://goo.gl/maps/AGoFoMXA1M12>

Apple: <http://maps.apple.com/?q=-33.725349,150.984731>



Plant of the Month Competition November 2015 Photos



Canistrum triangulare



Tillandsia tectorum



Tillandsia x correalei



Quesnelia 'Tim Plowman'



Neoregelia 'Lambert's Pride'



Tillandsia novakii



Tillandsia aff. limbata-utriculata group



Tillandsia ionantha (hybrid)



Neoregelia 'Inferno'

Artistic November 2015



"Halloween"



"On the Ridge"

"Plate of Delights"



Harvesting and growing aerial offsets from *Orthophytum*
Photos by Alan Herndon



Figure 7. Base of the large offset in Fig. 4 with the dead flowering cone still attached.



Figure 8 Same plant as Fig. 5 with the cone and all floral bracts removed. Dead leaves are still present.



Figure 9. Same as in Fig 6 with the dead leaves removed. An abundance of newly emerged roots can be seen at the base of the offset.



Figure 10. An aerial offset from *Orthophytum lymanianum*. The base has been cleaned of all dead leaves, but the stiff lower leaves extend well beneath the stem where roots are beginning to emerge. If you try to flatten out these leaves when planting, they will inevitably pull the stem away from the soil and prevent rooting.



Figure 11. Same plant as Fig. 8 with the tips of the downward pointing lower leaves buried in the potting mix.



Figure 12. Same plant as Fig. 8, with downward pointing leaves buried as deeply as needed to ensure that potting soil is packed tightly against the base of the stem.

Figure 13. Several small aerial offsets from *Orthophytum lymaniana* planted together in a 4 inch pot... Larger offsets are planted individually in pots.



Harvesting and growing aerial offsets from Orthophytum cont..

by Alan Herndon BSI 65(2)

Having a batch of offsets in hand, what do you do next? You should clean the offsets to maximize successful rooting (Figs. 6-9, pp. 11 & 14).

Keep in mind that the flower-bearing cone is part of the above-ground stem, and will never produce roots. Leaving it attached to the offset will only make it harder to ensure that there is sufficient contact between the root-producing part of the offset and the soil mix you use for potting. Here I should mention that the offset represents a new underground stem even though it is usually produced well above any soil surface. This underground stem will not grow or survive very long unless it can establish its own roots in soil. You can help this rooting process by removing the remnants of the flower-bearing cone. Often you can separate the offset from the cone by grabbing the base of the offset and freeing it with a snap, leaving only 5-6 floral bracts to deal with. Be aware that floral bracts are themselves spiny, and the spines may be very slender and remain unnoticed until they have worked their way deep into your fingers. Despite that, you should remove all floral bracts and any dead basal leaves from the offset.

After cleaning, you have an offset with a crown of leaves (the start of the basal rosette) and a small section of underground stem on the other end. Your job now is to plant the offset so the roots waiting to erupt from the underground stem will find a suitable soil medium immediately next door. Your main enemy in this is usually the leaves on the offset. Stiff lower leaves are often recurved initially and recurve even more as the plant dries. This pushes the offset up and pulls the stem away from the soil that originally encased it. Unfortunately, even a very small air gap between the stem and soil can keep the roots from growing enough to penetrate the soil. There are three basic ways to solve this problem. You can trim the recurving leaves on the offset so you can plant the stem firmly in the soil and assume that the roots will be well established by the time leaves have grown enough to recurve again. You can bury the lower recurved leaves (my preferred technique, Figs. 10-12, p.14) to provide additional anchoring of the plant in the soil, again counting on the roots to establish before additional leaf recurving forces the plant out of position. Finally, you can pin the offset in position with a commercial pot clip or wire you have bent into an appropriate shape.

Once planted correctly, the offsets from this group of *Orthophytum* will root rapidly. The first sign of new growth is a greening of the leaf bases in the center of the basal rosette. Under favorable conditions (basically hot - with plenty of water and fertilizer), root growth is rapid and the small plants will be ready to move up to larger pots in a few months. If you notice that several of the offsets from a single planting are showing growth, but some still aren't, check whether the ones showing no growth

are loose. If so, it is likely that they were never able to form roots because the stem was separated from the soil too early. If the leaf rosettes still look like they are in good shape, you can take these plants, clean off any leaves that have died since they were first potted and pot them again. Some will succeed in establishing roots on the second try.

It is good to keep in mind that only a single offset (if any) is produced from each flower cone. There is no need to harvest offsets at an early stage since you will not increase the number of collectable offsets as a result. You might as well leave the offsets on the plant until the above-ground stem, or the flower-bearing cones die. Once this happens, the offsets will cease growth until they are rooted. In a few cases, such as *O. magalhaesii*, the offsets on the flower-producing cones are initiated early and grow rapidly. They can reach flowering size and produce their own above-ground stem while still on the parental plant. To avoid having many of your offsets produce above-ground stems prematurely when dealing with these species, it will sometimes be best to harvest the offsets as soon as they reach a size of approximately 10 cm (4 inches) even if the flower cone is still green. You should be aware, however, that it is more difficult to clean off the remnants of a living cone than a dead cone. With some species such as *Orthophytum gurkenii*, *O. magalhaesii* and *O. disjunctum*, offsets will be produced at the tips of most cones. With other species, such as *O. horridum* and *O. conquistense*, only a few of the cones are likely to produce offsets and on most plants, no offsets at all are produced on the cones.

There are cases where offsets are formed very late in the life of the above-ground stem and have no chance to grow to a reasonable size before harvest becomes necessary. If this happens on a rare species, or a plant you would like to have more of, you can collect and plant the small offsets. A proportion of the offsets will establish roots and grow normally. The smaller the offsets when planted, the smaller the proportion that will survive, but you have a good chance to increase your stock by at least a small number of plants.

PINEGROVE BROMELIAD NURSERY



Ross Little & Helen Clewett
114 Pine Street, Wardell
PO Box 385, Wardell NSW 2477
Phone/Fax: (02) 6683 4188

E-mail
pinegrovebromeliads@bigpond.com



Plant of the Month Competition November 2015

(photos p.13)

Open	Judge's Choice	
1st	<i>Canistrum triangulare</i>	Kerry McNicol
2nd	<i>Tillandsia tectorum</i>	Werner Raff
3rd	<i>Tillandsia x correalei</i>	Joy Clark
Open	Members' Choice	
1st	<i>Canistrum triangulare</i>	Kerry McNicol
2nd	<i>Tillandsia tectorum</i>	Werner Raff
3rd	<i>Tillandsia novakii</i>	Ron Farrugia
Novice	Judge's Choice	
1st	<i>Quesnelia</i> 'Tim Plowman'	Warril Evans
2nd	<i>Neoregelia</i> 'Lambert's Pride'	Ian Hook
3rd	<i>Tillandsia ionantha</i> (hybrid)	Lindsay Munro
Novice	Members' Choice	
1st	<i>Quesnelia</i> 'Tim Plowman'	Warril Evans
2nd	<i>Tillandsia aff. limbata-utriculata group</i>	Lindsay Munro
=3rd	<i>Tillandsia ionantha</i> (hybrid)	Lindsay Munro
	<i>Neoregelia</i> 'Inferno'	John Schembri

Margaret Draddy Artistic Competition November 2015

(photos p.13)

1st	"Halloween"	Carolyn Bunnell
2nd	"On the Ridge"	Lindsay Munro
3rd	"Plate of Delights"	Joy Clark

Meeting News November 2015

(photos p.6)

John Schembri brought in a *Nidularium* for identification. Discussion lead to the conclusion that it was most probably an older form of *Nidularium procerum*.

Lindsay Munro requested identification of a *Tillandsia*. The stalk was quite stiff and dark. Members agreed that Lindsay's plant most likely has an affinity to *Tillandsia limbata*; labelled as *Tillandsia aff. limbata*.

Ron Farrugia showed his very large *Tillandsia harisii* that he has owned since 2004. To present it at a show the ties would need to be removed, the plant cleaned up, and any withered tips trimmed sympathetically. Ron wants to find a *Cryptanthus* 'Rainbow Star' if anyone has one spare.

Kerry McNicol asked if anyone could identify her unnamed *Neoregelia* that was slow to offset. No members could identify it, therefore, it was suggested Kerry might name it *Neoregelia* 'Myself'.

Plant of the Month Competition December 2015

(photos p.19)

Open Judge's Choice

1st	<i>Aechmea guarapariensis</i>	Carolyn Bunnell
2nd	<i>Tillandsia</i> 'Dimmitt's Talent'	Kerry McNicol
3rd	<i>Neophytum</i> 'Wide Wings'	Ron Farrugia

Open Members' Choice

1st	<i>Neophytum</i> 'Wide Wings'	Ron Farrugia
2nd	<i>Aechmea guarapariensis</i>	Carolyn Bunnell
3rd	<i>Tillandsia</i> 'Dimmitt's Talent'	Kerry McNicol

Novice Judge's Choice

1st	<i>Vriesea</i> 'Komet'	Mark Belot
2nd	<i>Tillandsia leonamiana</i>	Elizabeth Mudriczki
3rd	<i>Vriesea guttata</i>	Mark Belot

Novice Members' Choice

1st	<i>Vriesea guttata</i>	Mark Belot
2nd	<i>Neoregelia</i> 'Wild Rabbit'	John Schembri
3rd	<i>Vriesea</i> 'Komet'	Mark Belot

Margaret Draddy Artistic Competition December 2015

(photos p.19)

1st	"Bird in Paradise"	Di Tulloch
2nd	"Waiting for Santa"	John Schembri
3rd	" <i>T. tenuifolia</i> var. <i>surinamensis</i> "	Ian Hook

Meeting News December 2015

(photos p.6)

Ian Hook brought in one of the very early members of the BSA Cliff Norden's self sown *Tillandsia secunda* attached to a Frangipani branch.

Mark Belot showed some mini *Neoregelias* from Don Roberts at the Hunter Valley, possibly *N. carolinae* X 'Chili Verde' another plant possibly *N. ampullacea* X *olens* Variegated, another unnamed variegated 'Chili Verde'.

Helga Nitschke brought in a *Tillandsia* for identification which was confirmed to be in the *T. fasciculata* group.

Peter Fitzgerald brought in an *Aechmea nudicaulis*.

Kerry McNicol brought in a series of *Neoregelias* all with similar growth habits including the Registered Cultivar *Neoregelia* 'Martin'. Registered Cultivar names function like a trademark so you cannot label those plants by the trademarked name ie; *Neoregelia* 'Martin'. Instead, you must label them in accordance with the plant's cultivar name, so in this instance; *Neoregelia* (*carolinae* 'Lineata' x *concentrica*) x *macwilliamsii*.

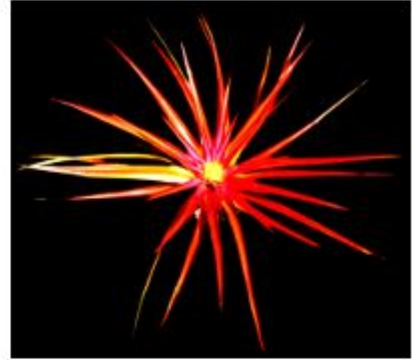
Plant of the Month Competition December 2015 Photos



Aechmea guarapariensis



Tillandsia 'Dimmitt's Talent'



Neophytum 'Wide Wings'



Vriesea 'Komet'



Vriesea guttata



Tillandsia leonamiana

Competition Points Trophies 2015



Neoregelia 'Wild Rabbit'



1st Open Joy Clark



1st MDAC Joy Clark

Artistic December 2015



"Waiting for Santa"



"Bird in Paradise"



T. tenuifolia var. surinamensis

Vale

Robyn Firth

25th October 1939 - 6th December 2015

Sadly, we once again have to say goodbye to a great friend. Robyn passed away on Sunday night, 6th December, at home with Don and her children, Stuart and Debbie with their families, close by her side. She will be sadly missed, not only by them but by the rest of her 'family' and many friends from the world of bromeliads.

Robyn was a very active person, busying herself with her nursery, and, when she could fit it, tennis, golf with Don at her local, Wallacia Golf Club, and in between, caravanning. Robyn began her romance with bromeliads after she closed her business, Deandar Camellia Specialist Nursery. She came to a Bromeliad meeting - just out of interest - around 2005. First, the NSW Society then the BSA. As with everything she did, she set her sights high, both in growing Bromeliads and in helping out at the society, winning Open Champion in 'Plant of the Month' and Grand Champion in our Spring & Autumn shows, on more than one occasion. Whatever genus she turned her hand to, she strived for excellence. Of late, whilst still keeping an interest in bromeliads, succulents had caught her eye, and new gardens began to take shape, with beautiful and unusual specimens from this family of plants.

Robyn rapidly became a very important cog in the BSA, firstly as Membership Secretary (2007-2013) then as Vice-President (2010-2015), as well as purchasing officer for pots etc, to give members an economical source of this necessary accessory to our addiction. She was the driving force behind setting high standards for our meetings and shows.

Robyn was co-leader of the small Bromsmatta Conference Committee - it wouldn't have been such a success without Robyn. Her commitment, first of all, in securing the conference for the BSA, doing much of the early spadework and then along with Ian, Don and the committee, forging ahead with the plans and organisation which made for such a memorable Bromsmatta Conference.

But, just the day before the conference, her niggling health problems overtook her, and she had emergency surgery for what would turn out to be, the condition which would eventually take her from us. Sadly, she missed Bromsmatta, and her health deteriorated rapidly.

Thanks for being part of our lives, Robyn.



COLLECTORS' CORNER

BROMELIADS - a large colourful range of Bromeliads, both species and hybrids of many genera

Includes a very large range of Tillandsias.

A mail order list of Tillandsias is available upon request. We also specialize in orchids, cacti, succulents, hoyas, bonsai and carnivorous plants, PLUS gems, fossils, natural history, books and much MORE!



810 Springvale Rd., Braeside VIC 3195
 PH: 03 9798 5845, FAX: 03 9706 3339
 EMAIL: sales@collectorscorner.com.au
 WEBSITE: www.collectorscorner.com.au
 Open 9am-5pm 7 days a week.

M. J. PATERSON

212 Sandy Creek Road,
 GYMPIE QLD 4570

A Large Range of Bromeliads For Sale, especially our own hybrid Neoregelias, Tillandsias, Cryptanthus and Vrieseas

Do call in if you are up this way.

But, please, phone first.

Phone/Fax: (07) 5482 3308.

Email: wm_paterson@bigpond.com

Also available Bromeliad Hybrids.

"For My Own Satisfaction" Book 1.
 Neos.

"For My Own Satisfaction" Book 2.

Crypt., Til., Vr., etc.

Books available on-line at
www.bromeliad-hybrids.com

MIDHURST BROMELIAD NURSERY

*Specialist Growers of Tillandsias
 And Other Genera.*

Hard grown to suit all Australian conditions.

Wholesale and Mail Order only.

**WRITE FOR FREE PRICE LISTS OF
 TILLANDSIA & OTHER GENERA TO:**

P.O. Box 612,

Hurstbridge, Vic. 3099

Phone: (03) 9718 2887.

Fax: (03) 9718 2760

Email: mossy@melbpc.org.au

FOREST DRIVE NURSERY

Prop: Peter Tristram.

C/- P.O. BOX 2, BONVILLE NSW 2441

(a few miles south of Coffs Harbor.)

Specialising in SPECIES and VARIEGATES
 from mostly imported stock.

TILLANDSIAS to titillate the most discerning fanciers.

Beautiful VRIESEAS (including 'silver' species).

GUZMANIAS, AECHMEAS, NEOREGELIAS, etc.

Visitors welcome - phone first: (02) 6655 4130 A.H.

Send S.A.E. for MAIL ORDER list of quality plants.

LITERATURE

TITLE	AUTHOR	PRICE
Growing Bromeliads - 3rd. Edition.	Bromeliad Society of Australia Inc.	\$10.00
Bromeliads for the Contemporary Garden.	Andrew Steens	\$35.00 Now \$20.00
Bromeliads, A Cultural Manual. (Rev. ed. 2007)	BSI	\$5.00
Bromeliads- The Connoisseur's Guide, 2007.	Andrew Steens	\$20.00

LITERATURE: *For Mail Order delivery cost*, please contact:

librarian@bromeliad.org.au

Or write to:

P.O. Box 340, Ryde. 2112

For the full list of Literature for sale, go to

<http://www.bromeliad.org.au/Contacts/BSALibrarian.htm>

MEET SOME
NEW FACES



We continue to attract new members into the Society and would like to welcome our most recent enthusiasts;

Jenny Brittain, Steve Molnar, Michelle Schmidt
& Audrey Williams.

If you would like to become a member please see
Membership Application on p. 8



SEED BANK

Thanks go to all those who have donated seed.

Seeds cost 50¢ per packet for Members and Seed Bank supporters (plus postage) or \$1 per packet (plus postage) for all other enquiries:

Enquiries for seeds should be directed to

Terry Davis (02) 9636 6114 or 0439 343 809

Below is the most recently added seed to our Seed Bank.

For the full list please go to bromeliad.org.au

<i>Alcantarea imperialis</i> (not rubra)	01/10/14	Jorgen Jakobsen
<i>Alcantarea imperialis rubra</i>	10/11/14	Laurie Dorfer
<i>Neoregelia kautskyi</i>	21/12/14	Terry Davis
<i>Tillandsia gardneri</i>	03/09/15	Terry Davis
<i>Catopsis florabunda</i>	05/09/15	Lydia Hope
<i>Tillandsia schreiteri</i>	29/09/15	Terry Davis
<i>Tillandsia fasciculata</i> (good branched inflorescence)	30/09/15	Terry Davis
<i>Billbergia brasiliensis</i>	01/10/15	Ted Boon
<i>Guzmania remyi</i>	01/10/15	Greg Aizlewood
<i>Tillandsia capillaris</i> (syn. <i>Vr. incana</i>)	05/10/15	Terry Davis
<i>Tillandsia seleriana</i> (large form)	06/10/15	Terry Davis
<i>Tillandsia minutiflora</i> (syn. <i>T. bryoides</i>)	06/10/15	Terry Davis
<i>Tillandsia magnusiana</i>	09/10/15	Terry Davis
<i>Tillandsia vicentina</i> (ex Jack Robertson)	09/10/15	Scott Dearden
<i>Tillandsia tricholepis</i>	10/10/15	Greg Aizlewood
<i>Vriesea philippo-coburgii</i>	16/10/15	Sharn Taylor
<i>Tillandsia butzii</i>	16/10/15	Kerry McNicol
<i>Tillandsia viridiflora</i> (Red leaf form)	17/10/15	Terry Davis
<i>Tillandsia schiedeana</i>	28/10/15	Terry Davis
<i>Tillandsia pohliana</i>	31/10/15	Terry Davis
<i>Tillandsia cryptantha</i>	01/11/15	Terry Davis
<i>Tillandsia tricolor</i>	04/11/15	Terry Davis
<i>Tillandsia cf. belloensis</i>	04/11/15	Terry Davis
<i>Tillandsia hammeri</i>	04/11/15	Terry Davis
<i>Tillandsia complanata</i> (only 1 packet available)	09/11/15	Terry Davis
<i>Tillandsia festucoides</i>	09/11/15	Greg Aizlewood
<i>Tillandsia loliacea</i>	09/11/15	Greg Aizlewood
<i>Tillandsia streptophylla</i>	03/12/15	Terry Davis
<i>Dyckia platyphylla</i>	03/12/15	Terry Davis