

Summary of Biological Diversity Survey at Salt Lick Point Land & Water Reserve BioBlitz, 13-14 May 2011

1. BioBlitz: Fifty-two scientists, amateur naturalists, and graduate and undergraduate students conducted a biological inventory at the Salt Lick Point Land & Water Reserve in Monroe County, IL, from noon on 13 May to noon on 14 May 2011. The surveyors were assigned to one, or more, of six sectors in the reserve. The surveyors included:

Keith McMullen, birder, Illinois Ornithological Society (IOS)

Tim Dever, birder, Illinois Audubon Society (IAS)

Mark Seifert, birder, IOS

Debbie Newman, birder, Illinois Nature Preserves Commission (INPC) and IAS

Dan Kassebaum, birder, IOS

Wally George, birder, Missouri Audubon Society

Jim Malone, birder, Missouri Audubon Society

John & Martha Schwegmann, botanists, Illinois Department Natural Resources (IDNR), Ret.

Bill McClain, botanist, IDNR Ret.

John Ebinger, botanist, Eastern Illinois University (EIU), Ret.

Henry Eilers, botanist, Shoal Creek Barrens Manager

Martin Kemper, botanist, IDNR

Mark Brown, forester, IDNR

Paul Marcum, botanist, Illinois Natural History Survey (INHS)

Joshua Wibbenmeyer, botanist, Applied Ecological Services

Hannah Kalk, botanist, IDNR

Nels Holmberg, bryophytes, Webster Groves Nature Study Society (WGNSS)

Ron Oesch, snails, WGNSS

Steve Taylor, entomologist, INHS

Diane Wood, entomologist, Southeast Missouri State University, plus 5 undergraduates

Chris Dietrich, entomologist, INHS

Dmitry Dmitriev, entomologist, INHS

Felipe Soto-Adames, entomologist, INHS

Jim Wiker, entomologist, Illinois State Museum

Aron Katz, entomologist, INHS (grad student)

Sam Heads, entomologist, INHS

Lesley Deem, entomologist, INHS

Scott Ballard, herpetologist, IDNR

Hugh Gilbert, herpetologist, St. Louis Herpetological Society

Bob Weck, herpetologist, Southwestern Illinois College (SWIC)

Mike Marlen, herpetologist, SWIC

Dirk Stevenson, herpetologist, University of Georgia; Oriante Society

Andrew Durso, herpetologist, EIU (grad student), plus 3 additional undergrads

Stephen Mullin, herpetologist, EIU, plus 2 additional undergrads

Joyce Hoffmann, mammalogist, INHS

Jean Mengelkoch, mammalogist, INHS

Joe Merritt, mammalogist, INHS

Ed Heske, mammalogist, INHS

Andy Miller, mycologist, INHS

Andy Methven, mycologist, EIU

Gerald Presley, mycologist, EIU (grad student)

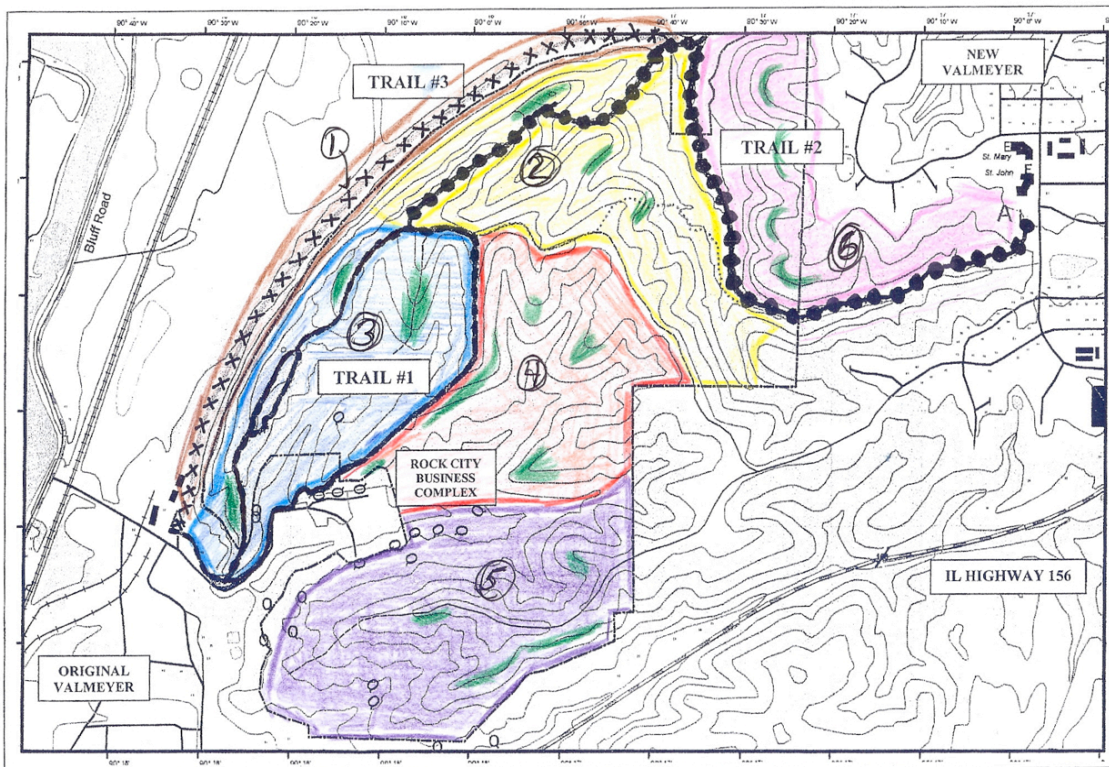
2. In Total: 1093 species of biota were observed during the BioBlitz. These include: 11 species of mammals, 29 species of herpetofauna, 103 species of avifauna, 367 species of invertebrate fauna, 479 species of vascular flora, 23 species of bryophytes, and 80 species of fungi.

3. Noteworthy findings: 8 state-listed species and a first recorded species in Illinois; these include:

- Cerulean Warbler *Dendroica cerulea* (threatened)
- Great Plains Ratsnake *Elaphe emoryi* (endangered)
- Flathead Snake *Tantilla gracilis* (threatened)
- Timber Rattlesnake *Crotalus horridus* (threatened)
- Woolly Buckthorn *Bumelia lanuginosa* (endangered)
- Dwarf Bedstraw *Galium virgatum* (endangered)
- Slender Heliotrope *Heliotropium tenellum* (endangered)
- Dark Bracted Oak Sedge *Carex nigromarginata* (endangered)
- Campylium Moss *Campylophyllum calcareum* (first state record)

In addition an Illinois State Museum lepidopterist observed and collected voucher specimens of three species not previously recorded for Monroe County -- Red-banded Hairstreak (*Calycopis cecrops*), Northern Cloudy Wing (*Thorybes pylades*), and Dusted Skipper (*Atrytonopris hianna*), a Species in Greatest Need of Conservation.

4. Data Presentation: Genera and species identification are provided for biota as field conditions allowed. Particularly among invertebrate biota, field identification was not ascertained to species or genera levels; in these cases, identification is presented at the next taxonomic rank.



Salt Lick Point Land and Water Reserve

Fungi and Allied Biota

Sectors 1,2,3,& 6

Myxomycota (slime molds)

Lycogala epidendrum – ASM 13426

Stemonitis axifera

Ascomycota (yeasts and sac fungi)

Annulohyphoxylon multiforme

Eutypa spinosa

Annulohyphoxylon truncatum

Helvella acetabulum – ASM 13428

Arachnopeziza – ASM 13424

Hysterobrevium mori

Byscogniauxia atropunctata

Lasiosphaera hirsute

Capronia sp.

Leptosphaeria

Ceratostomella lampadophora

Namamia

Chaetosphaeria ellisii

Sarcoscypha occidentalis – ASM 13425

Creopus gelatinosus – ASM 13421

Scutellinia scutellata

Daldinia concentrica

Urnula craterium

Dasyscyphus – ASM 13420

Whalleya microplaca

Diatrype (on Platanus)

Xylaria

Basidiomycota (club fungi)

Agrocybe – ASM 13432

Guepinia – ASM 13414

Armillaria gallica (rhizomorphs)

Gymnopus acervatus – ASM 13427

Artomyces pyxidatus

Gymnopus dryophilus

Auricularia auricula

Gymnopus subsulphureus

Bjerkandera adusta

Hydnochaete olivaceum

Cerrena unicolor

Hymenochaete

Clitocybe – ASM 13426

Irpex lacteus

Coprinus micaceus

Lentinellus omphalodes

Coprinus variegatus

Lepista nuda

Crepidotus crocophyllus – ASM 13434

Marasmius sullivantii

Crepidotus – ASM 13422

Megacollybia rodmanii

Crepidotus – ASM 13429

Mycena alcalina

Crepidotus – ASM 13430

Mycena leiana

Ductifera puluhuluana – ASM 13415

Panus conchatus – ASM 13425

Exidia glandulosa

Phellinus gilvis

Exidia recisa

Pholiota – ASM 13433

Galerina marginata

Pluteus cervinus

Ganoderma applanatum

Polyporus alveolaris

Gloeoporus dichrous – ASM 13417

Polyporus arcularius – ASM 13416

Polyporus badius
 Polyporus squamosus
 Psathyrella delineata
 Rhizomarasmius pyrrocephalus
 Schizophyllum commune
 Schizopora paradoxa
 Stereum complicatum
 Stereum ostrea
 Trametes elegans

Trametes versicolor
 Tremella fuciformis – ASM 13413
 Tremella mesenterica
 Trichaptum bifforme
 Tubaria – ASM 13423
 Xeromphalina campanella
 Xerula megalospora
 Xylobolus frustulatus

Deuteromycota (fungi imperfecti)

Trichoderma

Non-Flowering Plants

Sectors 1,2,4, & 5

Mosses: 21 species

<u>Scientific Name</u>	<u>Common Name</u>	<u>Family</u>
<i>Anomodon attenuatus</i>	Common tree apron moss	Thuidiaceae
<i>Anomodon minor</i>	Tree apron moss	Thuidiaceae
<i>Atrichum angustatum</i>	Catherine moss	Polytrichaceae
<i>Barbula unguiculata</i>	Claw leaf moss	Pottiaceae
<i>Brachythecium acuminatum</i> <i>var. cyrtophyllum</i>	Thin Cedar Moss	Brachytheciaceae
<i>Brachythecium laetum</i>	Common cedar moss	Brachytheciaceae
<i>Bryum caespitosum</i>	Long-celled thread moss	Bryaceae
<i>Campylophyllum calcareum</i>	a campylium moss	Amblystegiaceae
<i>Entodon seductrix</i>	Glossy moss	Entodontaceae
<i>Fabronia ciliaris var. ciliaris</i>	fabronia moss	Fabroniaceae
<i>Hygroamblystegium tenax</i> <i>var. tenax</i>	Stringy willow moss	Amblystegiaceae
<i>Leskea gracilescens</i>	Slender moss	Leskeaceae
<i>Orthotrichum stellatum</i>	A hood moss	Orthotrichaceae
<i>Orthotrichum stragulatum</i>	Golden hood moss	Orthotrichaceae
<i>Plagiomnium cuspidatum</i>	Woodsy moss	Mniaceae
<i>Platygyrium repens</i>	A hood moss	Orthotrichaceae
<i>Schistidium viride</i>	Beard moss	Grimmiaceae
<i>Sematophyllum demissum</i>	sematophyllum moss	Sematophyllaceae

<i>Taxiphyllum taxirameum</i>	Revolute scale leaf moss	Hypnaceae
<i>Tortula plinthobia</i>	a moss	Pottiaceae
<i>Weissia controversa</i>	Controverted green moss	Pottiaceae

Liverworts: 2 species

<i>Frullania inflata</i>	a leafy liverwort	Jubulaceae
<i>Porella platyphylla</i>	a leafy liverwort	Porellaceae

Plants (Flowering Plants & Ferns & Allied Biota)

Sectors 1-6

<u>Scientific Name</u>	<u>Common Name</u>
<i>Acalypha gracilens</i>	Slender Three-seeded Mercury
<i>Acalypha virginica</i>	Virginia Three-seeded Mercury
<i>Acer negundo</i>	Box Elder
<i>Acer rubrum</i>	Red Maple
<i>Acer saccharinum</i>	Silver Maple
<i>Acer saccharum</i>	Sugar Maple
<i>Achillea millifolium</i>	Yarrow, Common Milfoil
<i>Adiantum pedatum</i>	Maidenhair Fern
<i>Aesculus glabra</i>	Ohio Buckeye
<i>Agastache nepetoides</i>	Yellow Giant Hyssop
<i>Ageratina altissima</i>	White Snakeroot
<i>Agrimonia pubescens</i>	Soft Agrimony
<i>Agrimonia rostellata</i>	Woodland Agrimony
<i>Agrostis gigantea</i>	Water Bentgrass
<i>Agrostis hyemalis</i>	Tickle Grass
<i>Ailanthus altissima</i>	Tree-of-heaven
<i>Albizia julibrissin</i>	Mimosa
<i>Alliaria petiolata</i>	Garlic Mustard
<i>Allium canadense</i>	Wild Garlic
<i>Allium vineale</i>	Field Garlic
<i>Amaranthus hybridus</i>	Slim Amaranth
<i>Ambrosia artemisiifolia</i>	Common Ragweed
<i>Ambrosia trifida</i>	Giant Ragweed
<i>Amelanchier arborea</i>	Shadbush, Juneberry
<i>Amorpha canescens</i>	Leadplant

<i>Amorpha fruticosa</i>	False Indigo Bush
<i>Ampelopsis cordata</i>	Raccoon Grape
<i>Amphicarpa bracteata</i>	Hog Peanut
<i>Andropogon gerardii</i>	Big Bluestem
<i>Andropogon virginicus</i>	Broom Sedge
<i>Anemone virginiana</i>	Tall Thimbleweed
<i>Antennaria plantaginifolia</i>	Pussytoes, Ladies'-tobacco
<i>Anthemis cotula</i>	Dog Fennel
<i>Apocynum cannabinum</i>	Indian Hemp
<i>Aquilegia canadensis</i>	Columbine
<i>Arabis canadensis</i>	Sicklepod
<i>Arabis hirsuta</i>	Hairy Rock Cress
<i>Arabis laevigata</i>	Smooth Rock Cress
<i>Aralia racemosa</i>	American Spikenard
<i>Arenaria serpyllifolia</i>	Thyme-leaved Sandwort
<i>Arisaema dracontium</i>	Green Dragon
<i>Arisaema triphyllum</i>	Jack-in-the-Pulpit
<i>Aristolochia serpentaria</i>	Birthwort
<i>Arnoglossum atriplicifolium</i>	Pale Indian Plantain
<i>Arnoglossum plantagineum</i>	Groovestem Indian Plantain
<i>Aruncus dioicus</i>	Goat's-beard
<i>Asarum canadense</i>	Wild Ginger
<i>Asclepias amplexicaulis</i>	Sand Milkweed
<i>Asclepias incarnata</i>	Swamp Milkweed
<i>Asclepias quadrifolia</i>	Whorled Milkweed
<i>Asclepias syriaca</i>	Common Milkweed
<i>Asclepias tuberosa</i>	Butterfly Weed
<i>Asclepias verticillata</i>	Horsetail Milkweed
<i>Asclepias viridiflora</i>	Green Milkweed
<i>Asimina triloba</i>	Pawpaw
<i>Asplenium platyneuron</i>	Ebony Spleenwort
<i>Aster anomalus</i>	Blue Aster
<i>Aster azureus</i>	Sky-blue Aster
<i>Aster drummondii</i>	Drummond's Aster
<i>Aster laevis</i>	Smooth Aster
<i>Aster lateriflorus</i>	Calico Aster
<i>Aster oblongifolius</i>	Aromatic aster
<i>Aster patens</i>	Late Purple Aster
<i>Aster pilosus</i>	Hairy Aster

<i>Aster sagittifolius</i>	Arrow-leaved Aster
<i>Aster shortii</i>	Short's Aster
<i>Aster turbinellus</i>	Prairie Aster
<i>Aster vimineus</i>	Small White Aster
<i>Astragalus canadensis</i>	Canada Milk Vetch
<i>Aureolaria flava</i>	Smooth False Foxglove
<i>Aureolaria grandiflora</i>	Yellow False Foxglove
<i>Bidens frondosa</i>	Devil's Beggertick
<i>Blephilia hirsuta</i>	Wood Mint, Pagoda Plant
<i>Boehmeria cylindrica</i>	Smallspike False Nettle
<i>Botrychium virginianum</i>	Rattlesnake Fern
<i>Bouteloua curtipendula</i>	Side-oats grama
<i>Brachyelytrum erectum</i>	Long-Awned Wood Grass
<i>Brickellia eupatorioides</i>	False Boneset
<i>Bromus ciliatus</i>	Fringed Brome
<i>Bromus commutatus</i>	Meadow Brome
<i>Bromus pubescens</i>	Woodland Brome, Canada Brome
<i>Bromus purgans</i>	Ear-Leaved Brome
<i>Bromus tectorum</i>	Cheat Grass
<i>Buglossoides arvensis</i>	Field Gromwell
<i>Bumelia lanuginosa</i>	Woolly Buckthorn
<i>Cacalia atriplicifolia</i>	Pale Indian Plantain
<i>Camassia scilloides</i>	Wild Hyacinth
<i>Campanulastrum americana</i>	American Bellflower
<i>Campsis radicans</i>	Trumpet Creeper, Trumpet Vine
<i>Capsella bursa-pastoris</i>	Shepherd's Purse
<i>Cardamine pensylvanica</i>	Bitter Cress
<i>Cardiospermum halicacabum</i>	Love in a Puff
<i>Carduus nutans</i>	Musk Bristle Thistle
<i>Carex aggregata</i>	Smooth Clustered Sedge
<i>Carex albicans</i>	Sedge
<i>Carex albursina</i>	Blunt-Scaled Wood Sedge
<i>Carex amphibola</i>	Gray Sedge
<i>Carex artitecta (albicans)</i>	Blunt-Scaled Oak Sedge
<i>Carex bicknellii</i>	Bicknell's Sedge
<i>Carex blanda</i>	Common Wood Sedge
<i>Carex cephalophora</i>	Short-Headed Bracted Sedge
<i>Carex cristatella</i>	Crested Oval Sedge
<i>Carex digitalis</i>	Narrow-Leaved Wood Sedge

<i>Carex decomposita</i>	Cypress Knee Sedge
<i>Carex eburnea</i>	Ivory Sedge
<i>Carex emmonsii</i>	Sharp-Scaled Oak Sedge
<i>Carex glaucoidea</i>	Blue Sedge
<i>Carex grayi</i>	Common Bur Sedge
<i>Carex grisea</i>	Wood Gray Sedge
<i>Carex hirsutella</i>	Hairy-leaved Sedge
<i>Carex jamesii</i>	Grass Sedge
<i>Carex meadii</i>	Mead's Sedge
<i>Carex muhlenbergii</i>	Carex muhlenbergii
<i>Carex muskingumensis</i>	Swamp Oval Sedge
<i>Carex nigromarginata</i>	Dark Bracted Oak Sedge
<i>Carex pensylvanica</i>	Pennsylvania Oak Sedge
<i>Carex rosea</i>	Curly-Styled Wood Sedge
<i>Carex sparganioides</i>	Loose-Headed Bracted Sedge
<i>Carex tribuloides</i>	Sedge
<i>Carex umbellata</i>	Early Oak Sedge
<i>Carpinus caroliniana</i>	Blue Beech, Musclewood
<i>Carya cordiformis</i>	Bitternut Hickory
<i>Carya glabra</i>	Pignut Hickory
<i>Carya ovalis</i>	False Shagbark Hickory
<i>Carya ovata</i>	Shagbark Hickory
<i>Carya texana</i>	Black Hickory, Texas Hickory
<i>Carya tomentosa</i>	Mockernut Hickory
<i>Cassia fasciculata</i>	Partridge Pea
<i>Cassia marilandica</i>	Maryland Senna
<i>Ceanothus americanus</i>	New Jersey Tea
<i>Celastrus orbiculatus</i>	Oriental Bittersweet
<i>Celastrus scandens</i>	American Bittersweet
<i>Celtis laevigata</i>	Sugarberry
<i>Celtis occidentalis</i>	Hackberry
<i>Celtis tenuifolia</i>	Dwarf Hackberry
<i>Celtis tenuifolia</i> var. <i>georgiana</i>	Dwarf Hackberry
<i>Centaureum pulchellum</i>	Branched Centaury
<i>Cephalanthus occidentalis</i>	Buttonbush
<i>Cerastium glomeratum</i>	Clammy Chickweed
<i>Cerastium vulgatum</i>	Common Mouse-eared Chickweed
<i>Cercis canadensis</i>	Eastern Redbud
<i>Chaerophyllum procumbens</i>	Wild Chervil

<i>Chaerophyllum tainturieri</i>	Wild Chervil
<i>Chamaesyce maculata</i>	Spotted Spurge
<i>Chamaesyce nutans</i>	Spotted Sandmat
<i>Chasmanthium latifolium</i>	Sea Oats, River Oats
<i>Chenopodium album</i>	Lamb's Quarters
<i>Chenopodium standleyanum</i>	Woodland Goosefoot
<i>Chloris verticillata</i>	Tumble Windmill Grass
<i>Cichorium intybus</i>	Chickory
<i>Cinna arundinacea</i>	Common Wood Reed
<i>Circaea lutetiana</i>	Enchanter's Nightshade
<i>Cirsium altissimum</i>	Tall Thistle
<i>Cirsium discolor</i>	Field Thistle, Pasture Thistle
<i>Cirsium vulgare</i>	Bull Thistle
<i>Comandra umbellata</i>	False Toadflax, Bastard Toadflax
<i>Conium maculatum</i>	Poison Hemlock
<i>Conoclinium coelestinum</i>	Blue Mistflower
<i>Conyza canadensis</i>	Horseweed
<i>Corallorhiza wisteriana</i>	Wister's Coral Root
<i>Coreopsis palmata</i>	Prairie Coreopsis
<i>Coreopsis tripteris</i>	Tall Coreopsis
<i>Cornus amomum</i>	Dogwood
<i>Cornus drummondii</i>	Rough-leaved Dogwood
<i>Cornus florida</i>	Flowering Dogwood
<i>Cornus racemosa</i>	Gray Dogwood
<i>Corydalis flavula</i>	Yellow Corydalis, Pale Corydalis
<i>Corylus americana</i>	Hazelnut
<i>Croton monanthogynus</i>	Prairie Tea
<i>Crotonopsis elliptica</i>	Rushfoil
<i>Cryptotaenia canadensis</i>	Honewort
<i>Cunila origanoides</i>	Dittany
<i>Cynodon dactylon</i>	Bermuda Grass
<i>Cyperus esculentus</i>	Yellow Nut Grass
<i>Cyperus strigosus</i>	Strawcolored Flatsedge
<i>Cystopteris protrusa</i>	Fragile Fern
<i>Cystopteris X tenuis</i>	Hybrid Fragile Fern
<i>Dactylis glomerata</i>	Orchard Grass
<i>Dalea candida</i>	White Prairie Clover
<i>Dalea purpureum</i>	Purple Prairie Clover
<i>Danthonia spicata</i>	Curly Oat Grass, Poverty Oat Grass

<i>Datura stramonium</i> var. <i>tat</i>	Purple Jimsonweed
<i>Daucus carota</i>	Queen Anne's Lace
<i>Delphinium tricornis</i>	Dwarf Larkspur
<i>Dentaria laciniata</i>	Toothwort
<i>Desmanthus illinoensis</i>	Illinois Mimosa
<i>Desmodium canescens</i>	Hoary Tick Trefoil
<i>Desmodium glabellum</i>	Smooth Tick Trefoil
<i>Desmodium glutinosum</i>	Pointed Tick Trefoil
<i>Desmodium nudiflorum</i>	Bare-stemmed Tick Trefoil
<i>Desmodium paniculatum</i>	Panicled Tick Trefoil
<i>Diarrhena americana</i>	Beak Grass
<i>Dichantherium acuminatum</i>	Panic Grass
<i>Dichantherium boscii</i>	Bosc's Large-fruited Panic Grass
<i>Dichantherium clandestinum</i>	Deertongue
<i>Dichantherium linearifolium</i>	Slender-Leaved Panic Grass
<i>Dichantherium oligisanthes</i> var. <i>scribnerianum</i>	Scribner's Panic Grass
<i>Digitaria ischaemum</i>	Smooth Crab Grass
<i>Digitaria sanguinalis</i>	Hairy Crab Grass
<i>Dioscorea quaternata</i>	Wild Yam
<i>Dioscorea villosa</i>	Wild yam
<i>Diospyros virginiana</i>	Persimmon
<i>Dodecatheon meadia</i>	Shooting Star
<i>Draba brachycarpa</i>	Short-fruited Whitlow Grass
<i>Echinacea pallida</i>	Pale Purple Coneflower
<i>Echinochloa crus-galli</i>	Barnyard Grass
<i>Elaeagnus umbellata</i>	Autumn Olive
<i>Eleusine indica</i>	Indian Goosegrass
<i>Ellisia nyctela</i>	Aunt Lucy
<i>Elymus canadensis</i>	Nodding Wild Rye
<i>Elymus hystrix</i>	Bottlebrush grass
<i>Elymus villosus</i>	Hairy Wild Rye
<i>Elymus virginicus</i>	Virginia Wild Rye
<i>Equisetum arvense</i>	Common Horsetail
<i>Equisetum hyemale</i> affine	Tall Scouring Rush
<i>Eragrostis cilianensis</i>	Candy Grass
<i>Eragrostis pectinacea</i>	Tufted Lovegrass
<i>Eragrostis spectabilis</i>	Purple Lovegrass
<i>Erechtites hieracifolia</i>	Fireweed
<i>Erigeron annuus</i>	Annual Fleabane

<i>Erigeron philadelphicus</i>	Marsh Fleabane
<i>Erigeron pulchellus</i>	Robin's Plantain
<i>Erigeron strigosus</i>	Daisy Fleabane
<i>Erysimum repandum</i>	Spreading Wallflower
<i>Euonymus alatus</i>	Winged Euonymus
<i>Euonymus atropurpurea</i>	Wahoo, Burning Bush
<i>Euonymus fortunei</i>	Wintercreeper
<i>Eupatoriadelphus purpureus</i>	Joe-Pye Weed
<i>Eupatorium altissimum</i>	Tall Boneset
<i>Eupatorium purpureum</i>	Purple Joe-Pye weed
<i>Eupatorium rugosum</i>	White Snakeroot
<i>Eupatorium serotinum</i>	Late Boneset Late Thoroughwort
<i>Euphorbia corollata</i>	Flowering Spurge
<i>Fallopia convolvulus</i>	Black Bindweed
<i>Festuca arundinacea</i>	Fescue
<i>Festuca obtusa</i>	Nodding Fescue
<i>Festuca paradoxa</i>	Greater Nodding Fescue
<i>Festuca pratensis</i>	Meadow Fescue
<i>Festuca subverticillata</i>	Nodding Fescue
<i>Frangula caroliniana</i>	Carolina Buckthorn
<i>Fraxinus americana</i>	White Ash
<i>Fraxinus pennsylvanica</i>	Green Ash
<i>Fraxinus quadrangulata</i>	Blue Ash
<i>Galium aparine</i>	Cleavers, Goosegrass
<i>Galium circaezans</i>	Wild Licorice
<i>Galium concinnum</i>	Shining Bedstraw
<i>Galium pilosum</i>	Hairy Bedstraw
<i>Galium triflorum</i>	Sweet-scented Bedstraw
<i>Galium virgatum</i>	Dwarf Bedstraw
<i>Geranium carolinianum</i>	Carolina Cranesbill
<i>Geranium maculatum</i>	Wild Geranium
<i>Geum aleppicum</i>	Yellow Avens
<i>Geum canadense</i>	White Avens
<i>Geum vernum</i>	Spring Avens
<i>Gleditsia triacanthos</i>	Honey Locust
<i>Glyceria striata</i>	Fowl Manna Grass
<i>Gymnocladus dioica</i>	Kentucky Coffee Tree
<i>Hackelia virginiana</i>	Stickseed
<i>Hedyotis longifolia</i>	Long-Leaved Bluets

<i>Hedyotis nigricans</i>	Narrow-leaved Bluets
<i>Hedyotis nuttaliana</i>	Slender-Leaved Bluets
<i>Helianthus annuus</i>	Common Sunflower
<i>Helianthus divaricatus</i>	Woodland Sunflower
<i>Helianthus hirsutus</i>	Hairy Sunflower
<i>Helianthus rigidus</i>	Prairie Sunflower
<i>Helianthus tuberosus</i>	Jerusalem Artichoke
<i>Heliotropium tenellum</i>	Slender Heliotrope
<i>Heuchera americana</i> v. <i>hirs</i>	Tall Alumroot
<i>Heuchera richardsonii</i>	Prairie Alumroot
<i>Hibiscus lasiocarpus</i>	Marshmallow
<i>Hieracium gronovii</i>	Rough Hawkweed
<i>Hieracium longipilum</i>	Long-Bearded Hawkweed
<i>Hieracium scabrum</i>	Rough Hawkweed
<i>Hordeum pusillum</i>	Little Barley
<i>Houstonia canadensis</i>	Bluets
<i>Houstonia tenuifolia</i>	Slender-leaved Bluet
<i>Humulus japonicus</i>	Japanese Hops
<i>Hybanthus concolor</i>	Green Violet
<i>Hydrangea arborescens</i>	Wild Hydrangea
<i>Hydrastis canadensis</i>	Goldenseal
<i>Hydrocotyle ranunculoides</i>	Buttercup Pennywort
<i>Hydrophyllum appendiculatum</i>	Great Waterleaf
<i>Hydrophyllum macrophyllu</i>	Large-Leaf Waterleaf
<i>Hydrophyllum virginianum</i>	Virginia Waterleaf
<i>Hypericum punctatum</i>	Spotted St. John's Wort
<i>Ilex decidua</i>	Swamp Holly
<i>Impatiens capensis</i>	Spotted Touch-me-not
<i>Impatiens pallida</i>	Pale Touch-me-not
<i>Iris shrevei</i>	Blue Flag
<i>Isopyrum biternatum</i>	False Rue Anemone
<i>Juglans nigra</i>	Black Walnut
<i>Juncus tenuis</i>	Path Rush
<i>Juniperus virginiana</i>	Eastern Red Cedar
<i>Koeleria cristata</i>	June Grass
<i>Koeleria macrantha</i>	Prairie Junegrass
<i>Krigia biflora</i>	False Dandelion
<i>Krigia dandelion</i>	Potato Dandelion
<i>Lactuca canadensis</i>	Wild Lettuce

<i>Lactuca floridana</i> var. <i>villos</i>	Blue Woodland Lettuce
<i>Lactuca serriola</i>	Prickly Lettuce
<i>Lamium amplexicaule</i>	Henbit
<i>Lamium purpureum</i>	Purple Dead Nettle
<i>Laportea canadensis</i>	Wood Nettle
<i>Lathyrus palustris</i>	Marsh Vetchling
<i>Leersia virginica</i>	White Grass
<i>Lepidium densiflorum</i>	Small Peppergrass
<i>Lepidium virginicum</i>	Common Peppergrass
<i>Leptochloa attenuata</i>	Mucronate Sprangletop
<i>Lespedeza capitata</i>	Round-headed Bush Clover
<i>Lespedeza cuneata</i>	Silky Bush Clover
<i>Lespedeza procumbens</i>	Trailing Bush Clover
<i>Lespedeza violacea</i>	Violet Bush Clover
<i>Lespedeza virginica</i>	Slender Bush Clover
<i>Liatris aspera</i>	Rough Blazing-star
<i>Liatris cylindracea</i>	Cylindric Blazing-star
<i>Lilium michiganense</i>	Michigan Lily
<i>Lindera benzoin</i>	Spicebush
<i>Liparis liliifolia</i>	Twayblade Orchid
<i>Lithospermum canescens</i>	Hoary Puccoon
<i>Lithospermum croceum</i>	Hairy Puccoon
<i>Lithospermum incisum</i>	Fringed Puccoon
<i>Lobelia siphilitica</i>	Great Blue Lobelia
<i>Lonicera japonica</i>	Japanese Honeysuckle
<i>Lonicera mackii</i>	Amur Honeysuckle
<i>Lycopus americanus</i>	American Bugleweed
<i>Manfreda virginica</i>	American Agave
<i>Matricaria recutita</i>	Mayweed
<i>Medicago lupulina</i>	Black Medic
<i>Melica nitens</i>	Tall Melic Grass
<i>Melilotus alba</i>	White Sweet Clover
<i>Melilotus officinalis</i>	Yellow Sweet Clover
<i>Menispermum canadense</i>	Canada Moonseed
<i>Mentha arvensis</i>	Field Mint
<i>Mertensia virginica</i>	Virginia Bluebells
<i>Mimulus alatus</i>	Sharpwing Monkeyflower
<i>Mirabilis nyctaginea</i>	Wild Four O'Clock
<i>Miscanthus sinensis</i>	Chinese Silvergrass

<i>Monarda bradburiana</i>	Monarda, Bradbury Monarda
<i>Monarda fistulosa</i>	Wild Bergamot
<i>Morus alba</i>	White Mulberry
<i>Morus rubra</i>	Red Mulberry
<i>Muhlenbergia frondosa</i>	Common Satin Grass
<i>Muhlenbergia sobolifera</i>	Rock Satin Grass
<i>Myosotis macrosperma</i>	Scorpion Grass
<i>Myosotis verna</i>	White-Forget-Me-Not
<i>Nyssa sylvatica</i>	Sour Gum
<i>Oenothera biennis</i>	Common Evening Primrose
<i>Ophioglossum vulgatum v.</i>	Northern Adder's Tongue Fern
<i>Osmorhiza claytonii</i>	Hairy Sweet Cicely
<i>Osmorhiza longistylis</i>	Anise root
<i>Ostrya virginiana</i>	Hop Hornbeam
<i>Oxalis dillenii</i>	Common Wood Sorrel
<i>Oxalis fontana</i>	Common Yellow Oxalis
<i>Oxalis stricta</i>	Tall Wood Sorrel
<i>Oxalis violacea</i>	Violet Wood Sorrel
<i>Panax quinquefolia</i>	Ginseng
<i>Panicum capillare</i>	Common Witchgrass
<i>Panicum dichotomiflorum</i>	Fall Panicgrass
<i>Parietaria pensylvanica</i>	Pellitory
<i>Parthenium integrifolium</i>	Wild Quinine, American Feverfew
<i>Parthenocissus quinquefolia</i>	Virginia Creeper
<i>Paspalum laeve</i>	Smooth Lens Grass
<i>Paspalum setaceum</i>	Thin Paspalum
<i>Passiflora lutea</i>	Yellow Passion Flower
<i>Pedicularis canadensis</i>	Wood Betony
<i>Pellaea atropurpurea</i>	Purple Cliff Brake
<i>Penstemon digitalis</i>	Foxglove Beardstongue
<i>Penstemon hirsutus</i>	Hairy Beardstongue
<i>Penstemon pallidus</i>	Pale Beardstongue
<i>Perilla frutescens</i>	Beefstake
<i>Persicaria cespitosa</i>	Creeping Smartweed
<i>Persicaria punctata</i>	Dotted Smartweed
<i>Phacelia bipinnatifida</i>	Leafy Phacelia
<i>Phalaris arundinacea</i>	Reed Canarygrass
<i>Phegopteris hexagonopteris</i>	Broad Beech Fern
<i>Phleum pratense</i>	Timothy

<i>Phlox bifida</i>	Cleft Phlox
<i>Phlox divaricata</i>	Blue Phlox, Woodland Phlox
<i>Phlox glaberrima</i>	Smooth Phlox
<i>Phlox pilosa</i> ssp. <i>pilosa</i>	Downy Phlox
<i>Phryma leptostachya</i>	Lopseed
<i>Phyla lanceolata</i>	Frog Fruit
<i>Physalis heterophylla</i>	Clammy Ground Cherry
<i>Physalis subglabrata</i>	Smooth Ground Cherry
<i>Physostegia virginiana</i>	Obedient Plant
<i>Phytolacca americana</i>	Pokeweed
<i>Pilea pumila</i>	Canada Clearweed
<i>Plantago aristata</i>	Bracted Plantain
<i>Plantago lanceolata</i>	English Plantain
<i>Plantago rugelii</i>	Red-stalked Plantain
<i>Plantago virginica</i>	Dwarf Plantain
<i>Platanus occidentalis</i>	Sycamore, Buttonwood
<i>Poa annua</i>	Annual Blue Grass
<i>Poa compressa</i>	Canadian Bluegrass
<i>Poa pratensis</i>	Kentucky Bluegrass
<i>Poa sylvestris</i>	Woodland Blue Grass
<i>Podophyllum peltatum</i>	Mayapple
<i>Pointsettia dentata</i>	Toothed Spurge
<i>Polygonatum biflorum</i>	Small Solomon Seal
<i>Polygonatum commutatum</i>	Solomon's Seal
<i>Polygonum arenastrum</i>	Oval-leaf Knotweed
<i>Polygonum aviculare</i>	Common Knotweed
<i>Polygonum cespitosum</i> v. <i>l</i>	Creeping Smartweed
<i>Polygonum cristatum</i>	Copse Bindweed
<i>Polygonum lapathifolium</i>	Curttop Lady's Thumb, Hearts
<i>Polygonum scandens</i>	Climbing False Buckwheat
<i>Polygonum virginianum</i>	Virginia Knotweed
<i>Polymnia canadensis</i>	Leafcup
<i>Polystichum acrostichoides</i>	Christmas Fern
<i>Polytaenia nuttallii</i>	Prairie Parsley
<i>Pontederia cordata</i>	Pickerel Weed
<i>Populus deltoides</i>	Cottonwood
<i>Potentilla simplex</i>	Common Cinquefoil
<i>Preanthes crepidinea</i>	Great White Lettuce
<i>Prunus americana</i>	American Plum

<i>Prunus persica</i>	Peach
<i>Prunus serotina</i>	Wild Black Cherry
<i>Psoralea tenuiflora</i>	Scurfy Pea
<i>Ptelea trifoliata</i>	Wafer Ash
<i>Pycnanthemum pilosum</i>	Hairy Mountain Mint
<i>Pycnanthemum tenuifolium</i>	Slender Mountain Mint
<i>Quercus alba</i>	White Oak
<i>Quercus imbricaria</i>	Jack Oak
<i>Quercus macrocarpa</i>	Bur Oak
<i>Quercus marilandica</i>	Blackjack Oak
<i>Quercus prinoides</i>	Chinquapin/Yellow Chestnut Oak
<i>Quercus rubra</i>	Red Oak
<i>Quercus stellata</i>	Post Oak
<i>Quercus velutina</i>	Black Oak
<i>Ranunculus abortivus</i>	Small-flowered Buttercup
<i>Ranunculus hispidus</i>	Bristly Buttercup, Rough Buttercup
<i>Ranunculus sceleratus</i>	Cursed Buttercup
<i>Ranunculus septentrionalis</i>	Swamp Buttercup
<i>Ratibida pinnata</i>	Yellow Coneflower
<i>Rhamnus caroliniana</i>	Carolina Buckthorn
<i>Rhus aromatica</i>	Fragrant Sumac
<i>Rhus aromatica var. illinoensis</i>	Fragrant Sumac
<i>Rhus glabra</i>	Smooth Sumac
<i>Robinia pseudo-acacia</i>	Black Locust
<i>Rorippa palustris</i>	Bog Yellowcress
<i>Rosa carolina</i>	Carolina Rose, Pasture Rose
<i>Rosa multiflora</i>	Multiflora Rose
<i>Rubus allegheniensis</i>	Common Blackberry
<i>Rubus argutus</i>	Highbush Blackberry
<i>Rubus flagellaris</i>	Common Dewberry
<i>Rubus occidentalis</i>	Black Raspberry
<i>Rubus pensylvanicus</i>	Yankee Blackberry
<i>Rudbeckia hirta</i>	Black-eyed Susan
<i>Rudbeckia laciniata</i>	Goldenglow
<i>Rudbeckia missouriensis</i>	Missouri Coneflower
<i>Rudbeckia triloba</i>	Brown-eyed Susan
<i>Ruellia humilis</i>	Hairy Ruellia, Wild Petunia
<i>Rumex altissimus</i>	Pale Dock
<i>Rumex crispus</i>	Curly Dock

<i>Salix discolor</i>	Pussy Willow
<i>Salix interior (exigua)</i>	Sandbar Willow
<i>Salix nigra</i>	Black Willow
<i>Sambucus canadensis</i>	Elderberry, Common Elder
<i>Samolus valerandii</i>	Brookweed
<i>Sanguinaria canadensis</i>	Bloodroot
<i>Sanicula canadensis</i>	Canadian Black Snakeroot
<i>Sanicula gregaria</i>	Clustered Black Snakeroot
<i>Sassafras albidum</i>	Sassafras
<i>Saururus cernuus</i>	Lizard's Tail
<i>Schizachyrium scoparium</i>	Little Bluestem
<i>Schoenoplectus pungens</i>	Sharp Club-rush
<i>Scrophularia marilandica</i>	Figwort
<i>Scutellaria australis</i>	Small Skullcap
<i>Scutellaria ovata</i>	Heart-leaved Skullcap
<i>Scutellaria parvula v parvula</i>	Small Skullcap
<i>Securigera varia</i>	Purple Crownvetch
<i>Senecio glabellus</i>	Butterweed
<i>Senecio pauperculus</i>	Balsam Ragwort
<i>Senecio plattensis</i>	Prairie Ragwort
<i>Senna marilandica</i>	Maryland Senna
<i>Setaria faberi</i>	Giant Foxtail
<i>Setaria glauca</i>	Yellow Bristlegrass
<i>Sibaria virginica</i>	Virginia Winged Rockcress
<i>Sicyos angulatus</i>	Oneseed Burr Cucumber
<i>Silene antirrhina</i>	Sleepy Catchfly
<i>Silene stellata</i>	Starry Campion
<i>Silphium integrifolium</i>	Rosinweed
<i>Silphium terebinthinaceum</i>	Prairie-dock
<i>Sisyrinchium albidum</i>	White Blue-eyed Grass
<i>Sisyrinchium angustifolium</i>	Stout Blue-eyed Grass
<i>Sium suave</i>	Water Parsnip
<i>Smilacina racemosa</i>	False Solomon's Seal
<i>Smilax ecirrhata</i>	Upright Carrion Flower
<i>Smilax hispida</i>	Bristly Greenbrier
<i>Smilax lasioneuron</i>	Common Carrion Flower
<i>Smilax rotundifolia</i>	Cat Brier
<i>Smilax tamnoides</i>	Bristly Greenbrier
<i>Solanum carolinense</i>	Carolina Horsenettle

<i>Solidago altissima</i>	Tall Goldenrod
<i>Solidago buckleyi</i>	Buckley's Goldenrod
<i>Solidago canadensis</i>	Canada Goldenrod, Tall Goldenrod
<i>Solidago drummondii</i>	Drummond's Goldenrod
<i>Solidago gigantea</i>	Late Goldenrod
<i>Solidago nemoralis</i>	Gray Goldenrod
<i>Solidago radula</i>	Rough Goldenrod
<i>Solidago rigida</i>	Rigid Goldenrod
<i>Solidago speciosa</i>	Showy Goldenrod
<i>Solidago ulmifolia</i>	Elm-leaved Goldenrod
<i>Sonchus oleraceus</i>	Common Sow Thistle
<i>Sorghastrum nutans</i>	Indian Grass
<i>Sorghum halepense</i>	Johnson Grass
<i>Sphenopholis obtusata</i>	Prairie Wedge Grass
<i>Sporobolus vaginiflorus</i>	Poverty Dropseed
<i>Stachys pilosa</i>	Hairy Hedgenettle
<i>Stachys tenuifolia</i>	Smooth Hedgenettle
<i>Staphylea trifolia</i>	Bladdernut
<i>Stellaria media</i>	Common Chickweed
<i>Strophostyles helvola</i>	Trailing Wild Bean
<i>Stylophorum diphyllum</i>	Celandine Poppy
<i>Symphoricarpos orbiculatus</i>	Coralberry
<i>Taenidia integerrima</i>	Yellow Pimpernel
<i>Taraxacum officinale</i>	Common Dandelion
<i>Tephrosia virginiana</i>	Goat's Rue, Hoary Pea
<i>Teucrium canadense v. virginica</i>	American Germander
<i>Thalictrum thalictroides</i>	Rue Anemone
<i>Thlaspi arvense</i>	Field Pennycress
<i>Thaspium barbinode</i>	Hairy Meadow Parsnip
<i>Thaspium trifoliatum</i>	Purple Meadow Parsnip
<i>Thiaspi arvense</i>	Field Penny Cress
<i>Tilia americana</i>	American Linden, Basswood
<i>Torilis arvensis</i>	Field Hedge Parsley
<i>Toxicodendron radicans</i>	Poison Ivy
<i>Tradescantia ohioensis</i>	Ohio Spiderwort
<i>Tradescantia virginiana</i>	Virginia Spiderwort
<i>Tragopogon dubius</i>	Sand Goat's Beard
<i>Tridens flavus</i>	Common Purpletop
<i>Trifolium campestre</i>	Low Hop Clover

<i>Trifolium hybridum</i>	Alsike Clover
<i>Trifolium pratense</i>	Red Clover
<i>Trifolium repens</i>	White Clover
<i>Trillium recurvatum</i>	Red Trillium, Wake Robin
<i>Triodanis perfoliata</i>	Venus's Looking Glass
<i>Triosteum aurantiacum</i>	Early Horse Gentian
<i>Triosteum perfoliatum</i>	Late Horse Gentian
<i>Ulmus alata</i>	Winged Elm
<i>Ulmus americana</i>	American Elm
<i>Ulmus pumila</i>	Siberian Elm
<i>Ulmus rubra</i>	Slippery Elm, Red Elm
<i>Urtica dioica</i>	Tall Nettle, Stinging Nettle
<i>Urtica doica</i> ssp <i>gracilis</i>	California Nettle
<i>Uvularia grandiflora</i>	Yellow, Large-flowered Bellwort
<i>Vaccinium pallidum</i>	Low-bush Blueberry
<i>Valerianella radiata</i>	Corn Salad
<i>Verbascum blattaria</i>	Moth Mullein
<i>Verbascum thapsus</i>	Woolly Mullein
<i>Verbena hastata</i>	Blue Vervain
<i>Verbena stricta</i>	Hoary Vervain
<i>Verbena urticifolia</i>	White Vervain
<i>Verbesina helianthoides</i>	Yellow Crownbeard
<i>Vernonia baldwinii</i>	Baldwin's Ironweed
<i>Vernonia missurica</i>	Missouri Ironweed
<i>Veronica arvensis</i>	Corn Speedwell
<i>Veronica peregrina</i>	Purslane Speedwell
<i>Veronicastrum virginicum</i>	Culver's Root
<i>Viburnum prunifolium</i>	Black Haw
<i>Viburnum rufidulum</i>	Rusty Nannyberry, Southern Black Haw
<i>Vicia angustifolia</i>	Mat Vetch
<i>Viola pratincola</i>	Common Blue Violet
<i>Viola pubescens</i> v. <i>eriocarp</i>	Smooth Yellow Violet
<i>Viola rafinesquii</i>	Johnny-jump-up
<i>Viola sagittata</i>	Arrow-Leaved Violet
<i>Viola sororia</i>	Woolly Blue Violet
<i>Viola triloba</i>	Cleft Violet
<i>Vitis aestivalis</i>	Summer Grape
<i>Vitis cinerea</i>	Winter Grape
<i>Vitis riparia</i>	Riverside Grape

<i>Vitis vulpina</i>	Frost Grape
<i>Vulpia octoflora</i>	Six Weeks Fescue
<i>Woodsia obtusa</i>	Common Woodsia
<i>Xanthium strumarium</i>	Cocklebur
<i>Zizia aurea</i>	Golden Alexanders

Fauna
Sectors 1-6

Phylum: Platyhelminthes

Class: Turbellaria

Order: Tricladida

<u>Family</u>	<u>Genus/Species</u>	<u>Common Name</u>
?	?	flatworm

Phylum: Annelida

Class: Oligochaeta

Order: ?

<u>Family</u>	<u>Genus/Species</u>	<u>Common Name</u>
?	?	earthworm

Phylum: Mollusca

Class: Bivalvia

Order: Veneroida

<u>Family</u>	<u>Genus/Species</u>	<u>Common Name</u>
Sphaeriidae	Sp.1	fingernail clam

Phylum: Mollusca

Class: Gastropoda

Order: Basommatophora

<u>Family</u>	<u>Genus/Species</u>	<u>Common Name</u>
Planorbidae	<i>Planorbella subcrenatum</i>	Rough Ram's Horn
	fm.: <i>Helisoma subcrenatum</i>	
Lymnaeidae	<i>Fossaria obrussa</i>	Golden Fossaria
	Fm.: <i>Lymnea obrussa</i>	
?	Sp 1	aquatic snail
?	Sp 2	aquatic snail
?	Sp 3	aquatic snail
?	Sp 4	aquatic snail

Phylum: Mollusca

Class: Gastropoda

Order: Stylommatophora

<u>Family</u>	<u>Genus/Species</u>	<u>Common Name</u>
Stylommatophora	<i>Anguispira kochi</i>	Banded Tigersnail
Stylommatophora	<i>Millerelix (Daedalochila)dorfeuilliana</i>	Oakwood Liptooth
Stylommatophora	<i>Discus patulus</i>	Domed Disc
Stylommatophora	<i>Euchemotrema fraternum</i>	Upland Pillsnail
Stylommatophora	<i>Euconulus trochulus</i>	Silk Hive
Stylommatophora	<i>Gastrocopta contracta</i>	Bottleneck Snaggletooth
Stylommatophora	<i>Gastrocopta procera</i>	Wing Snaggletooth
Stylommatophora	<i>Glyphyalinia indentata</i>	Carved Glyph
Stylommatophora	<i>Haplotrema concavum</i>	Gray-foot Lancefoot
Stylommatophora	<i>Hawaiiia minuscule</i>	Minute Gem
Stylommatophora	<i>Mesodon thyroides</i>	White-lip Globe
Stylommatophora	<i>Mesodon zaletus</i>	Toothed Globe
Stylommatophora	<i>Mesomphix sp.</i>	?
Stylommatophora	<i>Neohelix albolabris</i>	Whitelip
Stylommatophora	<i>Paravitrea significans</i>	Domed Supercoil
Stylommatophora	<i>Punctum minutissimum</i>	Small Spot
Stylommatophora	<i>Stenotrema barbatum</i>	Bristled Slitmouth
Stylommatophora	<i>Vallonia perspectiva</i>	Thin-lip Vallonia
Stylommatophora	<i>Ventridens ligera</i>	Globose Dome
Stylommatophora	<i>Strobilops labyrinthicus</i>	Maze Pinecone
Stylommatophora	<i>Xolotrema fosteri</i>	Bladetooth Wedge

Phylum: Arthropoda

Class: Insecta

Order: Archaeognatha (Microcoryphia)

<u>Family</u>	<u>Genus/Species</u>	<u>Common Name</u>
Machilidae	<i>Pedetontus</i> Sp.1	family: jumping bristletails

Phylum: Arthropoda

Class: Insecta

Order: Diplura

<u>Family</u>	<u>Genus/Species</u>	<u>Common Name</u>
Campodaeidae	Sp.1	family: two-pronged brisletails

Phylum: Arthropoda

Class: Insecta

Order: Collembola

<u>Family</u>	<u>Genus/Species</u>	<u>Common Name</u>
Neanuridae	<i>Pseudachorutes</i> Sp 1	Springtail
Neanuridae	<i>Americanuia</i> Sp 1	Springtail

Onychiuridae	<i>Onychiurus</i> Sp 1	Springtail
Isotomidae	<i>Anorophurus</i> Sp 1	Springtail
Isotomidae	<i>Isotoma viridis</i>	Springtail
Isotomidae	<i>Isotoma</i> Sp 1	Springtail
Isotomidae	<i>Isotomurus</i> Sp 1	Springtail
Tomoceridae	<i>Pogonognathellus flavescens</i> (2)	Springtail
Tomoceridae	<i>Pogonognathellus nigrinus</i>	Springtail
Oncopoduridae	<i>Oncopodura iowana</i>	Springtail
Entomobryidae	<i>Pseudosinella aera</i>	Springtail
Entomobryidae	<i>Pseudosinella alba</i>	Springtail
Entomobryidae	<i>Pseudosinella violenta</i>	Springtail
Entomobryidae	<i>Orcheselia haxafasciata</i>	Springtail
Entomobryidae	<i>Orcheselia ainslei</i>	Springtail
Entomobryidae	<i>Lepidocyrtus heleine</i>	Springtail
Entomobryidae	<i>Lepidocyrtus unifasciatus</i>	Springtail
Entomobryidae	<i>Lepidocyrtus</i> Sp 1	Springtail
Entomobryidae	<i>Entomobryoides purpurascens</i>	Springtail
Entomobryidae	<i>Entomobrya muttifasciata</i>	Springtail
Entomobryidae	<i>Entomobrya quadrilineata</i>	Springtail
Entomobryidae	<i>Homidia socia</i>	Springtail
Entomobryidae	<i>Willowsia nigromaculata</i>	Springtail
Paronellidae	<i>Salinadecorata</i> Sp 1	Springtail
Sminthuridae	<i>Sminthurides</i> Sp 1	Springtail
Sminthuridae	<i>Sminthurinus elegans</i>	Springtail
Sminthuridae	<i>Sminthurinus quadrimaculatus</i>	Springtail
Sminthuridae	<i>Bourletiella</i> Sp 1	Springtail
Sminthuridae	<i>Bourletiella</i> Sp 2	Springtail
Sminthuridae	<i>Bourletiella</i> Sp 3	Springtail
Sminthuridae	<i>Ptenothrix atra</i>	Springtail
Sminthuridae	<i>Ptenothrix marimorata</i>	Springtail

Phylum: Arthropoda

Class: Insecta

Order: Orthoptera

<u>Family</u>	<u>Genus/Species</u>	<u>Common Name</u>
Rhaphidophoridae	<i>Ceuthophilus</i> Sp1	Cave or Camel Cricket
Rhaphidophoridae	<i>Ceuthophilus</i> Sp2	Cave or Camel Cricket
Acrididae	<i>Chortophaga Melanoplus</i>	Grasshopper
Acrididae	<i>Chortophaga viridifasciata</i>	Grasshopper
Acrididae	<i>Trachyrhachys kiowa</i>	Grasshopper
Acrididae	<i>Spharagerron</i> Sp 1	Grasshopper
Acrididae	<i>Melanoplus</i> Sp 1	Grasshopper
Acrididae	<i>Melanoplus</i> Sp2	Grasshopper
Acrididae	<i>Gomphocerae</i> Sp 1	Grasshopper

Tetriaidae	<i>Tetrix subulata</i>	Grasshopper
Tetriaidae	<i>Tehigideo lateralis</i>	Grasshopper
Tettigoniidae	<i>Neoconocephalus</i> sp 1	Katydid
Gryllidae	<i>Gryllus veletis</i>	Spring Field Cricket
Gryllidae	<i>Oecanthus nigricornis</i>	Black-horned Cricket
Gryllidae	<i>Allonemobius</i> Sp 1	Ground Cricket

Phylum: Arthropoda

Class: Insecta

Order: Mantodea

<u>Family</u>	<u>Genus/Species</u>	<u>Common Name</u>
Mantidae	<i>Stagmomantis carolina</i>	Praying Mantis, Carolina Mantis

Phylum: Arthropoda

Class: Insecta

Order: Psocoptera

<u>Family</u>	<u>Genus/Species</u>	<u>Common Name</u>
?	?	Book & Bark Lice

Phylum: Arthropoda

Class: Insecta

Order: Hemiptera

<u>Family</u>	<u>Genus/Species</u>	<u>Common Name</u>
Aphididae	Sp. 1	Family: Plant Lice
Aphididae	Sp. 2	Family: Plant Lice
Aphididae	Sp. 3	Family: Plant Lice
Caliscelidae	<i>Bruchomorpha</i> sp	Family: Piglet Bugs
Caliscelidae	<i>Fitchiella? robertsonii?</i>	Piglet Bugs
Cicadellidae	<i>Acinopterus acuminatus</i>	Leafhopper
Cicadellidae	<i>Agallia constricta</i>	Leafhopper
Cicadellidae	<i>Agallia quadripunctata</i>	Leafhopper
Cicadellidae	<i>Agalliopsis novella</i>	Leafhopper
Cicadellidae	<i>Athysanus argentatus</i>	Leafhopper
Cicadellidae	<i>Balclutha impicta</i>	Leafhopper
Cicadellidae	<i>Balclutha neglecta</i>	Leafhopper
Cicadellidae	<i>Curerna costalis</i>	Leafhopper
Cicadellidae	<i>Dikraneura angustata</i>	Leafhopper
Cicadellidae	<i>Dikraneura mali</i>	Leafhopper
Cicadellidae	<i>Dikrella cruentata</i>	Leafhopper
Cicadellidae	<i>Draeculacephala antica</i>	Leafhopper
Cicadellidae	<i>Draeculacephala constricta</i>	Leafhopper
Cicadellidae	<i>Endria inimica</i>	Leafhopper
Cicadellidae	<i>Empoasca</i> sp.	Leafhopper
Cicadellidae	<i>Erasmoneura nigra</i>	Leafhopper

Cicadellidae	<i>Erasmoneura vulnerata</i>	Leafhopper
Cicadellidae	<i>Eratoneura basilaris</i>	Leafhopper
Cicadellidae	<i>Eratoneura certa</i>	Leafhopper
Cicadellidae	<i>Eratoneura citrosa</i>	Leafhopper
Cicadellidae	<i>Eratoneura emquu</i>	Leafhopper
Cicadellidae	<i>Erythridula</i> sp.	Leafhopper
Cicadellidae	<i>Erythroneura triapitsyni</i>	Leafhopper
Cicadellidae	<i>Erythroneura aclys</i>	Leafhopper
Cicadellidae	<i>Erythroneura beameri</i>	Leafhopper
Cicadellidae	<i>Erythroneura cymbium</i>	Leafhopper
Cicadellidae	<i>Erythroneura diva</i>	Leafhopper
Cicadellidae	<i>Erythroneura palimpsesta</i>	Leafhopper
Cicadellidae	<i>Erythroneura nudata</i>	Leafhopper
Cicadellidae	<i>Erythroneura pontifex</i>	Leafhopper
Cicadellidae	<i>Erythroneura vitis</i>	Leafhopper
Cicadellidae	<i>Erythroneura vaga</i>	Leafhopper
Cicadellidae	<i>Extrusanus extrusus</i>	Leafhopper
Cicadellidae	<i>Flexamia clayi</i>	Leafhopper
Cicadellidae	<i>Flexamia inflata</i>	Leafhopper
Cicadellidae	<i>Flexamia pectinata</i>	Leafhopper
Cicadellidae	<i>Forcipata loca</i>	Leafhopper
Cicadellidae	<i>Graminella nigrifrons</i>	Leafhopper
Cicadellidae	<i>Graphocephala versuta</i>	Leafhopper
Cicadellidae	<i>Gyponana</i> sp.	Leafhopper
Cicadellidae	<i>Jikradia olitoria</i>	Leafhopper
Cicadellidae	<i>Kybos</i> sp	Leafhopper
Cicadellidae	<i>Laevicephalus peronatus</i>	Leafhopper
Cicadellidae	<i>Laevicephalus</i> sp	Leafhopper
Cicadellidae	<i>Laevicephalus sylvestris</i>	Leafhopper
Cicadellidae	<i>Latalus sayi</i>	Leafhopper
Cicadellidae	<i>Limotettix anthracinus</i>	Leafhopper
Cicadellidae	<i>Macrosteles quadrilineata</i>	Leafhopper
Cicadellidae	<i>Memnonia flavida</i>	Leafhopper
Cicadellidae	<i>Neocoelidia tumidifrons</i>	Leafhopper
Cicadellidae	<i>Paraphlepsius irroratus</i>	Leafhopper
Cicadellidae	<i>Paraphlepsius</i> sp.1	Leafhopper
Cicadellidae	<i>Paraulacizes irrorata</i>	Leafhopper
Cicadellidae	<i>Pendarus</i> sp.	Leafhopper
Cicadellidae	<i>Pendarus</i> sp.1	Leafhopper
Cicadellidae	<i>Penthimia americana</i>	Leafhopper
Cicadellidae	<i>Polyamia</i> sp.	Leafhopper
Cicadellidae	<i>Ponana limonea</i>	Leafhopper
Cicadellidae	<i>Scaphytopius acutus</i>	Leafhopper
Cicadellidae	<i>Scaphytopius</i> sp	Leafhopper

Cicadellidae	<i>Scaphytopius</i> sp.2	Leafhopper
Cicadellidae	<i>Scaphoideus</i> sp.1	Leafhopper
Cicadellidae	<i>Scaphoideus</i> sp.2	Leafhopper
Cicadellidae	<i>Sorhoanus orientalis</i>	Leafhopper
Cicadellidae	<i>Stirellus bicolor</i>	Leafhopper
Cicadellidae	<i>Xestocephalus desertorum</i>	Leafhopper
Cicadidae	<i>Magiccada septendecim</i>	Periodical Cicada
Cicadidae	<i>Magiccada tredecassini</i>	Cicada
Cicadidae	<i>Magiccada tredecim</i>	Cicada
Cicadidae	<i>Magiccada</i> Sp. (brood XII)	Cicada
Cixiidae	<i>Cixius</i> sp.	Cixid Planthopper
Cixiidae	<i>Oliarus</i> sp.	Cixid Planthopper
Coreidae	<i>Anasa tristis</i>	Squash Bug
Delphacidae	<i>Delphacodes campestris</i>	Delphacid Planthopper
Delphacidae	<i>Delphacodes basivitta</i>	Delphacid Planthopper
Delphacidae	<i>Delphacodes</i> sp.	Delphacid Planthopper
Delphacidae	<i>Liburniella ornata</i>	Delphacid Planthopper
Dictyopharidae	<i>Scolops</i> sp.	Dictyopharid Planthopper
Fulgoridae	<i>Cyrpoptus</i> sp.1	Fulgorid Planthopper
Gerridae	<i>Limnopus canaliculatus</i>	Water Strider
Gerridae	<i>Gerris</i> sp.	Water Strider
Membracidae	<i>Atymna querci</i>	Treehopper
Membracidae	<i>Campylenchia latipes</i>	Treehopper
Membracidae	<i>Cyrtolobus aureus</i>	Treehopper
Membracidae	<i>Entylia carinata</i>	Treehopper
Membracidae	<i>Entylia Ceresa</i>	Treehopper
Membracidae	<i>Stictocephala brevis</i>	Treehopper
Membracidae	<i>Stictocephala lutea</i>	Treehopper
Membracidae	<i>Stictocephala taurina</i>	Treehopper
Membracidae	<i>Tylopelta Americana</i>	Treehopper
Mesoveliidae	<i>Mesovelia</i> sp.	Marsh Treader
Tingidae	<i>Corythuca ciliata</i>	Lace Bug
Miridae	sp. 1	Jumping Tree Bug
Miridae	sp. 2	Jumping Tree Bug
Miridae	sp. 1	Plant Bug
Miridae	sp. 2	Plant Bug
Pachygronthidae	<i>Oedancala</i> sp.	Plant Bug
Pentatomidae	<i>Mormidea</i> sp.	Stink Bug
Pentatonidae	<i>Murgantia histrionica</i>	Harlequin Bug
Pentatomidae	sp. 1	Stink Bug
Reduviidae	<i>Apiomeris</i> sp. 1	Assassin Bug
Thyreocoridae	<i>Corimelaena</i> sp.	Negro Bug, Black Bug

Phylum: Arthropoda

Class: Insecta

Order: Odonota

<u>Family</u>	<u>Genus/Species</u>	<u>Common Name</u>
Coenagrionidae	<i>Enallagma</i> Sp 1	Bluet Damselfly
Calopterygidae	<i>Calopteryx</i> Sp 1	Ebony Jewelwing
Libellulidae	<i>Libellula lydia</i>	Common White Tail Dragonfly
Libellulidae	Sp.1	Skipper Dragonfly
Libellulidae	Sp.2	Skipper Dragonfly
Aeshnidae	Sp.1	Darner Dragonfly
Lestidae	Sp.1	damselfly

Phylum: Arthropoda

Class: Insecta

Order: Neuroptera

<u>Family</u>	<u>Genus/Species</u>	<u>Common Name</u>
Hemerobiidae	Sp.1	Lacewing
Mantispidae	Sp.1	Lacewing
Chrysopidae	Sp.1	Green Lacewing

Phylum: Arthropoda

Class: Insecta

Order: Mecoptera

<u>Family</u>	<u>Genus/Species</u>	<u>Common Name</u>
Panorpidae	<i>Panorpa</i> Sp.	Scorpionfly
?	Sp. 1	Scorpionfly

Phylum: Arthropoda

Class: Insecta

Order: Lepidoptera

<u>Family</u>	<u>Genus/Species</u>	<u>Common Name</u>
Papilionidae	<i>Battus philenor</i>	Pipevine Swallowtail
Papilionidae	<i>Papilio polyxenes</i>	Black Swallowtail
Papilionidae	<i>Papilio cresphontes</i>	Giant Swallowtail
Papilionidae	<i>Papilio glaucus</i>	Tiger Swallowtail
Papilionidae	<i>Papilio troilus</i>	Spicebush Swallowtail
Papilionidae	<i>Eurytides marcellus</i>	Zebra Swallowtail
Pieridae	<i>Pieris rapae</i>	Cabbage White
Pieridae	<i>Colias philodice</i>	Clouded Sulphur
Riodinidae	<i>Calycopis cecrops</i>	Red-banded Hairstreak
Riodinidae	<i>Callophrys gryneus</i>	Olive Hairstreak
Riodinidae	<i>Everes comyntas</i>	Eastern Tailed-blue
Riodinidae	<i>Celastrina neglecta</i>	Summer Azure

Sphingidae	<i>Darapsa myron</i>	Hog Sphinx
Sphingidae	<i>Hemaris diffinis</i>	Bumble Bee Sphinx
Nymphalidae	<i>Limenitis arthemis</i>	Red-spotted Purple
Nymphalidae	<i>Vanessa atalanta</i>	Red Admiral
Nymphalidae	<i>Phyciodes tharos</i>	Pearl Crescent
Hesperiidae	<i>Epargyreus clarus</i>	Silver-spotted Skipper
Hesperiidae	<i>Achalarus lyciades</i>	Hoary Edge
Hesperiidae	<i>Atrytonopsis hianna</i>	Dusted Skipper
Hesperiidae	<i>Thorybes pylades</i>	Northern Cloudy Wing
Tineidae	Sp.1	family: oinophilid moths
Zygaenidae	<i>Harnisima americana</i>	Skeletonizer Moth

Phylum: Arthropoda

Class: Insecta

Order: Coleoptera

<u>Family</u>	<u>Genus/Species</u>	<u>Common Name</u>
Bostrichidae	Sp.1	family: branch & twig borers
Brentidae	Sp.2	family: straight-snouted weevils
Buprestidae	<i>Acmaeodera</i> Sp.	family: metallic wood-boring beetles
Cantharidae	<i>Podabrus</i> Sp.	family: soldier beetles
Cantharidae	Sp.1	family: soldier beetles
Carabidae	Sp.1	family: ground beetles
Carabidae	Sp.2	family: ground beetles
Carabidae	Sp.3	family: ground beetles
Cerambycidae	Sp.1	family: long-horned & sawyer beetles
Cerambycidae	Sp.2	family: long-horned & sawyer beetles
Ceratocanthidae	<i>Germarostes</i> Sp.	family: pill scarab beetles
Dytiscidae	Sp.1	family: predaceous diving beetles
Chrysomelidae	<i>Diabrotica</i> Sp.	family: leaf beetles
Chrysomelidae	<i>Sumitrosis</i> Sp.	family: leaf beetles
Chrysomelidae	Sp.1	family: leaf beetles
Chrysomelidae	Sp.2	family: leaf beetles
Chrysomelidae	Sp.3	family: leaf beetles
Chrysomelidae	Sp.4	family: leaf beetles
Chrysomelidae	Sp.5	family: leaf beetles
Chrysomelidae	Sp.6	family: leaf beetles
Chrysomelidae	Sp.1	family: leaf beetles
Chrysomelidae	Sp.2	family: leaf beetles
Cicindelidae	<i>Cicindela sexguttata</i>	Green Tiger Beetle
Lampyridae	Sp. 1	family: fireflies
Lampyridae	Sp. 2	family: fireflies
Cucujidae	Sp.1	family: flat bark beetles
Curculionidae	<i>Conotrachelus</i> Sp.	family: weevils
Curculionidae	<i>Cylindridia</i> Sp.	family: weevils

Curculionidae	<i>Eisonyx</i> Sp.	family: weevils
Curculionidae	Sp.1	family: weevils
Curculionidae	Sp.2	family: weevils
Curculionidae	Sp.3	family: weevils
Curculionidae	Sp.4	family: weevils
Curculionidae	Sp.5	family: weevils
Curculionidae	sub-family Scolytinae Sp.1	sub-family: ambrosia beetles
Coccinellidae	<i>Harmonia axyridis</i>	Asian Ladybird Beetle
Coccinellidae	<i>Coleomegilla</i> Sp.	family: ladybird beetles
Coccinellidae	Sp.1	family: ladybird beetles
Coccinellidae	Sp.2	family: ladybird beetles
Heteroceridae	Sp.1	family: variegated mud-loving beetles
Languriidae	Sp.1	family: lizard beetles
Scarabaeidae	Sp.1	family: scarab beetles
Scarabaeidae	Sp.2	family: scarab beetles
Scarabaeidae	Sp. 3	family: scarab beetles
Dermeestidae	<i>Anthrenus</i> Sp.	family: dermestid beetles
Mordellidae	<i>Mordellina</i> Sp.	family: tumbling flower beetles
Mordellidae	Sp.1	family: tumbling flower beetles
Mordellidae	Sp.2	family: tumbling flower beetles
Lucanidae	<i>Ceruchus</i> Sp.	family: stag beetles
Nitidulidae	<i>Meligethes</i> Sp.	family: sap beetles
Passalidae	<i>Odontotaenius disjunctus</i>	Horned Passalus
Rhipiphoridae	Sp.1	family: wedge-shaped beetles
Staphylinidae	<i>Stenus</i> Sp.	Rove Beetle

Phylum: Arthropoda

Class: Insecta

Order: Hymenoptera

<u>Family</u>	<u>Genus/Species</u>	<u>Common Name</u>
?	Sp 1	Bee
?	Sp 2	Bee
Braconidae	Sp.1	family: braconid wasps
Braconidae	Sp.2	family: braconid wasps
Braconidae	Sp.3	family: braconid wasps
Vespidae	<i>Polistes</i> sp	genus: Polistes wasps
Formicidae	<i>Camponotus</i> sp.1	genus: carpenter ants
Formicidae	<i>Camponotus</i> sp.2	genus: carpenter ants
Formicidae	<i>Camponotus</i> Sp.3	genus: carpenter ants
Formicidae	<i>Crematogaster</i> Sp.	genus: acrobat ants
Formicidae	<i>Solenopsis</i> Sp.	genus: fire ants
Formicidae	Genus 1 / Sp.	family: ants
Ichneumonidae	Sp.1	family: ichneumon flies
Ichneumonidae	Sp.2	family: ichneumon flies

Phylum: Arthropoda**Class: Insecta****Order: Diptera**

<u>Family</u>	<u>Genus/Species</u>	<u>Common Name</u>
Tachinidae	Sp.1	family: tachinid flies
Dolichopodidae	Sp.1	family: longlegged flies
Pyrgotidae	Sp.1	family: pyrgotid flies
Tipulidae	<i>Tipula</i> sp.1	family: crane flies
Tipulidae	Sp2	family: crane flies
Tipulidae	Sp3	family: crane flies
Muscidae	Sp1	family: face flies
Muscidae	Sp2	family: face flies
Muscidae	Sp3	family: face flies
Cyclorhapha	Sp1	family: circular-seamed flies
Cyclorhapha	Sp2	family: circular-seamed flies
Cyclorhapha	Sp3	family: circular-seamed flies
(other)	Sp1	?
(other)	Sp2	?
(other)	Sp3	?
(other)	Sp4	?
(other)	Sp5	?
(other)	Sp6	?
(other)	Sp7	?
(other)	Sp8	?
(other)	Sp9	?
(other)	Sp10	?
(other)	Sp11	?
(other)	Sp12	?
(other)	Sp13	?
(other)	Sp14	?
(other)	Sp15	?
(other)	Sp16	?
(other)	Sp17	?
Heleomyzidae	Sp1	family: heleomyzidae flies
Mycetophilidae	Sp1	family: fungus gnats
Mycetophilidae	Sp2	family: fungus gnats
Sphaeroceridae	<i>Megaselia</i>	family: lesser dung flies
Culicidae	Anopheles Sp.1	family: mosquitoes
Culicidae	Culex Sp.1	family: mosquitoes
Culicidae	Culicoides Sp.1	family: mosquitoes

Phylum: Arthropoda

Class: Arachnida

Order: Araneae

<u>Family</u>	<u>Genus/Species</u>	<u>Common Name</u>
?	Sp.1	order: spiders
?	Sp.2	order: spiders
?	Sp.3	order: spiders
?	Sp.4	order: spiders
?	Sp.5	order: spiders
?	Sp.6	order: spiders
?	Sp.7	order: spiders
?	Sp.8	order: spiders
?	Sp.9	order: spiders
?	Sp.10	order: spiders
?	Sp.11	order: spiders
?	Sp.12	order: spiders
?	Sp.13	order: spiders
?	Sp.14	order: spiders
?	Sp.15	order: spiders
?	Sp.16	funnel web spider

Phylum: Arthropoda

Class: Arachnida

Order: Opiliones

<u>Family</u>	<u>Genus/Species</u>	<u>Common Name</u>
?	<i>Lieobumum</i> Sp.	genus: harvestmen/daddy long legs
?	Sp.2	genus: harvestmen/daddy long legs
?	Sp.3	genus: harvestmen/daddy long legs

Phylum: Arthropoda

Class: Arachnida

Order: Pseudoscorpiones

<u>Family</u>	<u>Genus/Species</u>	<u>Common Name</u>
Chernetidae	Sp.1	family: pseudoscorpions

Phylum: Arthropoda

Class: Crustacea

Order: Amphipoda

<u>Family</u>	<u>Genus/Species</u>	<u>Common Name</u>
Gammaridae	<i>Gammarus</i> Sp.1	family: amphipod
? Crangonyctidae?	Sp.2	family: amphipod

Phylum: Arthropoda

Class: Crustacea

Order: Cladocera

<u>Family</u>	<u>Genus/Species</u>	<u>Common Name</u>
Daphnia	Sp.1	family: water fleas
Bosmina	Sp.1	family: water fleas

Phylum: Arthropoda

Class: Crustacea

Order: Decapoda

<u>Family</u>	<u>Genus/Species</u>	<u>Common Name</u>
Cambaridae	Sp.1	family: crayfish

Phylum: Arthropoda

Class: Crustacea

Order: Diplopoda (Polydesmida)

<u>Family</u>	<u>Genus/Species</u>	<u>Common Name</u>
Polydesmidae	Sp.1	family: millipedes
Polydesmidae	Sp.2	family: millipedes

Phylum: Arthropoda

Class: Crustacea

Order: Isopoda

<u>Family</u>	<u>Genus/Species</u>	<u>Common Name</u>
Armidillidiidae	Sp.1	family: pill bugs
Armidillidiidae	Sp.2	family: pill bugs
Asellidae	<i>Lirceus</i> Sp.1	genus: aquatic isopod

Phylum: Chordata

Class: Amphibia

Order: Caudata

<u>Family</u>	<u>Genus/Species</u>	<u>Common Name</u>
Ambystomatidae	<i>Ambystoma</i> Sp. (larva)	genus: salamander
Plethodontidae	<i>Eurycea longicauda</i>	Longtail Salamander
Plethodontidae	<i>Eurycea lucifuga</i>	Cave Salamander
Plethodontidae	<i>Plethodon glutinosus</i>	Northern Slimy Salamander

Phylum: Chordata

Class: Amphibia

Order: Anura

<u>Family</u>	<u>Genus/Species</u>	<u>Common Name</u>
Bufo	<i>Bufo americanus</i>	American Toad
Bufo	<i>Bufo fowleri</i>	Fowler's Toad
Hyla	<i>Hyla chrysoscelis</i>	Cope's Gray Treefrog
Hyla	<i>Hyla versicolor</i>	Eastern Gray Treefrog
Hyla	<i>Pseudacris triseriata</i>	Western Chorus Frog
Rana	<i>Rana</i> Sp.	genus: leopard frog

Phylum: Chordata

Class: Reptilia

Order: Testudines

<u>Family</u>	<u>Genus/Species</u>	<u>Common Name</u>
Emydidae	<i>Terrepenne Carolina</i>	Eastern Box Turtle

Phylum: Chordata

Class: Reptilia

Order: Squamata (Sub-order: Sauria)

<u>Family</u>	<u>Genus/Species</u>	<u>Common Name</u>
Phrynosomatidae	<i>Sceloporus undulatus</i>	Northern Fence Lizard
Scincidae	<i>Scincella lateralis</i>	Ground Skink
Scincidae	<i>Eumeces fasciatus</i>	Five-lined Skink
Scincidae	<i>Eumeces laticeps</i>	Broadhead Skink
Teiidae	<i>Cnemidophorus sexlineatus</i>	Six-lined Racerunner

Phylum: Chordata

Class: Reptilia

Order: Squamata (Sub-order: Serpentes)

<u>Family</u>	<u>Genus/Species</u>	<u>Common Name</u>
Colubridae	<i>Carphophis amoenus</i>	Worm Snake
Colubridae	<i>Coluber constrictor</i>	Racer
Colubridae	<i>Diadophis punctatus</i>	Ringneck Snake
Colubridae	<i>Elaphe emoryi</i>	Great Plains Ratsnake
Colubridae	<i>Lampropeltis traingulum</i>	Red Milksnake
Colubridae	<i>Opheodrys aestivus</i>	Rough Green Snake
Colubridae	<i>Storeria occipitomaculata</i>	Redbelly Snake
Colubridae	<i>Tantilla gracilis</i>	Flathead Snake
Colubridae	<i>Thamnophis sirtalis</i>	Eastern Garter Snake
Colubridae	<i>Virginia valeriae</i>	Smooth Earth Snake
Viperidae	<i>Agkistrodon contortrix</i>	Copperhead
Viperidae	<i>Crotalus horridus</i>	Eastern Timber Rattlesnake

Phylum: Chordata

Class: Aves

<u>Order</u>	<u>Family</u>	<u>Genus/Species</u>	<u>Common Name</u>
Anseriformes	Anatidae	<i>Branta canadensis</i>	Canada Goose
Anseriformes	Anatidae	<i>Aix sponsa</i>	Wood Duck
Pelicaniformes	Ardeidae	<i>Ardea herodias</i>	Great Blue Heron
Pelicaniformes	Ardeidae	<i>Ardea alba</i>	Great Egret
Pelicaniformes	Ardeidae	<i>Bubulcus ibis</i>	Cattle Egret
Acciptriformes	Cathartidae	<i>Coragyps atratus</i>	Black Vulture
Acciptriformes	Cathartidae	<i>Cathartes aura</i>	Turkey Vulture
Acciptriformes	Acciptridae	<i>Haliaeetus leucocephalus</i>	Bald Eagle
Acciptriformes	Acciptridae	<i>Accipiter striatus</i>	Sharp-shinned Hawk
Acciptriformes	Acciptridae	<i>Accipiter cooperii</i>	Cooper's Hawk
Acciptriformes	Acciptridae	<i>Buteo lineatus</i>	Red-shouldered Hawk
Acciptriformes	Acciptridae	<i>Buteo platypterus</i>	Broad-winged Hawk
Acciptriformes	Acciptridae	<i>Buteo jamaicensis</i>	Red-tailed Hawk
Charadriiformes	Charadriidae	<i>Charadrius vociferus</i>	Killdeer
Columbiformes	Columbidae	<i>Streptopelia decaocto</i>	Eurasian Collared-Dove
Columbiformes	Columbidae	<i>Zenaida macroura</i>	Mourning Dove
Cuculiformes	Cuculidae	<i>Coccyzus americanus</i>	Yellow-billed Cuckoo
Strigiformes	Strigidae	<i>Megascopus asio</i>	Eastern Screech-Owl
Strigiformes	Strigidae	<i>Bubo virginianus</i>	Great Horned Owl
Strigiformes	Strigidae	<i>Strix varia</i>	Barred Owl
Caprimulgiformes	Caprimulgidae	<i>Chordeiles minor</i>	Common Nighthawk
Apodiformes	Apodidae	<i>Chaetura pelagica</i>	Chimney Swift
Apodiformes	Trochilidae	<i>Archilochus colubris</i>	Ruby-throated Hummingbird
Coraciiformes	Alcedinidae	<i>Ceryle alcyon</i>	Belted Kingfisher
Piciformes	Picidae	<i>Melanerpes erythrocephalus</i>	Red-headed Woodpecker
Piciformes	Picidae	<i>Melanerpes carolinus</i>	Red-bellied Woodpecker
Piciformes	Picidae	<i>Picoides pubescens</i>	Downy Woodpecker
Piciformes	Picidae	<i>Picoides villosus</i>	Hairy Woodpecker
Piciformes	Picidae	<i>Colaptes auratus</i>	Northern Flicker
Piciformes	Picidae	<i>Dryocopus pileatus</i>	Pileated Woodpecker
Passeriformes	Tyrannidae	<i>Contopus cooperi</i>	Olive-sided Flycatcher
Passeriformes	Tyrannidae	<i>Contopus virens</i>	Eastern Wood-Pewee
Passeriformes	Tyrannidae	<i>Empidonax virescens</i>	Acadian Flycatcher
Passeriformes	Tyrannidae	<i>Sayornis phoebe</i>	Eastern Phoebe
Passeriformes	Tyrannidae	<i>Myiarchus crinitus</i>	Great-crested Flycatcher
Passeriformes	Tyrannidae	<i>Tyrannus tyrannus</i>	Eastern Kingbird
Passeriformes	Vireonidae	<i>Vireo griseus</i>	White-eyed Vireo
Passeriformes	Vireonidae	<i>Vireo flavifrons</i>	Yellow-throated Vireo
Passeriformes	Vireonidae	<i>Vireo solitarius</i>	Blue-headed Vireo
Passeriformes	Vireonidae	<i>Vireo gilvus</i>	Warbling Vireo
Passeriformes	Vireonidae	<i>Vireo philadelphicus</i>	Philadelphia Vireo

Passeriformes	Vireonidae	<i>Vireo olivaceus</i>	Red-eyed Vireo
Passeriformes	Corvidae	<i>Cyanocitta cristata</i>	Blue Jay
Passeriformes	Corvidae	<i>Corvus brachyrhynchos</i>	American Crow
Passeriformes	Corvidae	<i>Corvus ossifragus</i>	Fish Crow
Passeriformes	Alaudidae	<i>Eremophila alpestris</i>	Horned Lark
Passeriformes	Hirundinidae	<i>Tachycineta bicolor</i>	Tree Swallow
Passeriformes	Hirundinidae	<i>Stelgidopteryx serripennis</i>	Northern Rough-winged Swallow
Passeriformes	Hirundinidae	<i>Riparia riparia</i>	Bank Swallow
Passeriformes	Hirundinidae	<i>Petrochelidon pyrrhonota</i>	Cliff Swallow
Passeriformes	Hirundinidae	<i>Hirundo rustica</i>	Barn Swallow
Passeriformes	Paridae	<i>Poecile carolinensis</i>	Carolina Chickadee
Passeriformes	Paridae	<i>Baeolophus bicolor</i>	Tufted Titmouse
Passeriformes	Sittidae	<i>Sitta carolinensis</i>	White-breasted Nuthatch
Passeriformes	Troglodytidae	<i>Thryothorus ludovicianus</i>	Carolina Wren
Passeriformes	Troglodytidae	<i>Troglodytes aedon</i>	House Wren
Passeriformes	Poliotilidae	<i>Poliotilta caerulea</i>	Blue-gray Gnatcatcher
Passeriformes	Turdidae	<i>Sialia sialis</i>	Eastern Bluebird
Passeriformes	Turdidae	<i>Catharus minimus</i>	Gray-cheeked Thrush
Passeriformes	Turdidae	<i>Catharus ustulatus</i>	Swainson's Thrush
Passeriformes	Turdidae	<i>Hylocichla mustelina</i>	Wood Thrush
Passeriformes	Turdidae	<i>Turdus migratorius</i>	American Robin
Passeriformes	Mimidae	<i>Mimus polyglottos</i>	Northern Mockingbird
Passeriformes	Mimidae	<i>Toxostoma rufum</i>	Brown Thrasher
Passeriformes	Sturnidae	<i>Sturnus vulgaris</i>	European Starling
Passeriformes	Bombycillidae	<i>Bombycilla cedrorum</i>	Cedar Waxwing
Passeriformes	Parulidae	<i>Seiurus aurocapilla</i>	Ovenbird
Passeriformes	Parulidae	<i>Helmitheros vermivorus</i>	Worm-eating Warbler
Passeriformes	Parulidae	<i>Parkesia motacilla</i>	Louisiana Waterthrush
Passeriformes	Parulidae	<i>Parkesia noveboracensis</i>	Northern Waterthrush
Passeriformes	Parulidae	<i>Mniotilta varia</i>	Black-and-White Warbler
Passeriformes	Parulidae	<i>Oreothlypis peregrina</i>	Tennessee Warbler
Passeriformes	Parulidae	<i>Geothlypis philadelphia</i>	Mourning Warbler
Passeriformes	Parulidae	<i>Geothlypis formosus</i>	Kentucky Warbler
Passeriformes	Parulidae	<i>Geothlypis trichas</i>	Common Yellowthroat
Passeriformes	Parulidae	<i>Setophaga ruticilla</i>	American Redstart
Passeriformes	Parulidae	<i>Setophaga cerulea</i>	Cerulean Warbler
Passeriformes	Parulidae	<i>Setophaga americana</i>	Northern Parula
Passeriformes	Parulidae	<i>Setophaga magnolia</i>	Magnolia Warbler
Passeriformes	Parulidae	<i>Setophaga fusca</i>	Blackburnian Warbler
Passeriformes	Parulidae	<i>Setophaga pensylvanica</i>	Chestnut-sided Warbler
Passeriformes	Parulidae	<i>Setophaga striata</i>	Blackpoll Warbler
Passeriformes	Parulidae	<i>Setophaga virens</i>	Black-throated Green Warbler
Passeriformes	Parulidae	<i>Cardellina canadensis</i>	Canada Warbler
Passeriformes	Parulidae	<i>Cardellina pusilla</i>	Wilson's Warbler

Passeriformes	Parulidae	<i>Icteria virens</i>	Yellow-breasted Chat
Passeriformes	Emberizidae	<i>Pipilo erythrophthalmus</i>	Eastern Towhee
Passeriformes	Emberizidae	<i>Spizella passerina</i>	Chipping Sparrow
Passeriformes	Emberizidae	<i>Spizella pusilla</i>	Field Sparrow
Passeriformes	Cardinalidae	<i>Piranga rubra</i>	Summer Tanager
Passeriformes	Cardinalidae	<i>Piranga olivacea</i>	Scarlet Tanager
Passeriformes	Cardinalidae	<i>Cardinalis cardinalis</i>	Northern Cardinal
Passeriformes	Cardinalidae	<i>Pheucticus ludovicianus</i>	Rose-breasted Grosbeak
Passeriformes	Cardinalidae	<i>Passerina caerulea</i>	Blue Grosbeak
Passeriformes	Cardinalidae	<i>Passerina cyanea</i>	Indigo Bunting
Passeriformes	Cardinalidae	<i>Spiza americana</i>	Dickcissel
Passeriformes	Icteridae	<i>Agelaius phoeniceus</i>	Red-winged Blackbird
Passeriformes	Icteridae	<i>Quiscalus quiscula</i>	Common Grackle
Passeriformes	Icteridae	<i>Molothrus ater</i>	Brown-headed Cowbird
Passeriformes	Icteridae	<i>Icterus spurius</i>	Orchard Oriole
Passeriformes	Icteridae	<i>Icterus galbula</i>	Baltimore Oriole
Passeriformes	Fringillidae	<i>Carpodacus mexicanus</i>	House Finch
Passeriformes	Fringillidae	<i>Spinus tristis</i>	American Goldfinch

Phylum: Chordata

Class: Mammalia

<u>Order</u>	<u>Family</u>	<u>Genus/Species</u>	<u>Common Name</u>
Didelphimorphia	Didelphidae	<i>Didelphis virginiana</i>	Virginia Opossum
Soricomorpha	Talipidae	<i>Scalopus aquaticus</i>	Eastern Mole
Chiroptera	Vespertilionidae	<i>Perimyotis subflavus</i>	Tri-color Bat
Chiroptera	Vespertilionidae	<i>Eptesicus fuscus</i>	Big Brown Bat
Lagomorpha	Leporidae	<i>Sylvilagus floridanus</i>	Eastern Cottontail Rabbit
Rodentia	Sciuridae	<i>Tamias striatus</i>	Eastern Chipmunk
Rodentia	Sciuridae	<i>Sciurus carolinensis</i>	Gray Squirrel
Rodentia	Sciuridae	<i>Sciurus niger</i>	Fox Squirrel
Carnivora	Procyonidae	<i>Procyon lotor</i>	Raccoon
Carnivora	Felidae	<i>Lynx rufus</i>	Bobcat
Artiodactyla	Cervidae	<i>Odocoileus virginianus</i>	White-tailed Deer