

Polypores (Polyporales s. l.) collected in Cuba

FRANTIŠEK KOTLABA¹ and ZDENĚK POUZAR²

¹Na Petřínách 10, 162 00 Praha 6, Czech Republic

²Srbská 2, 160 00 Praha 6, Czech Republic

Kotlaba F. and Pouzar Z. (2003): Polypores (Polyporales s.l.) collected in Cuba. – Czech Mycol. 55: 7–50

The paper deals with 75 species of polypores (Polyporales s.l.) – mostly with their hosts – collected during a 5 months' stay of the first author in Cuba at the end of 1966 and the beginning of 1967. In this paper mostly common (but also some uncommon) species are treated; most of the interesting and very rare polypores were published 19 years ago.

Key words: Polypores, hosts, Cuba, localities.

Kotlaba F. a Pouzar Z. (2003): Polypores (Polyporales s.l.) collected in Cuba. – Czech Mycol. 55: 7–50

V článku je uvedeno 75 druhů chorošovitých hub (Polyporales s.l.) – většinou s jejich hostitelskými dřevinami – sebraných během pětíměsíčního pobytu prvního autora na Kubě koncem roku 1966 a začátkem roku 1967. V této práci se pojednává většinou o hojných (ale také některých nehojných) druzích; většina zajímavých a velmi vzácných chorošů byla publikována před 19 lety.

INTRODUCTION

During a 5 months' stay in Cuba (19 November 1966 – 9 April 1967), the first author collected a large number of various fungi but has published very few (see Kotlaba 1983, in Czech; Kotlaba, Pouzar and Ryvarden 1984; Vampola, Kotlaba and Pouzar 1994), as he was occupied with other problems.

Now, many years after retirement, both authors are finally able to present a paper on one part of the Cuban collections, i.e. polypores; perhaps some collections are not quite correctly identified. The problem with many polypores in the subtropics and tropics is that their carpophores are often sterile and therefore very difficult (or impossible) to identify.

The main aim of this paper is to draw attention of specialists to the existence of a rather rich collection of polypores (and other fungi) from Cuba in the herbarium of the Mycological Department of the National Museum in Prague (PRM), which can be borrowed for e.g. taxonomical studies.

The polypores (and other fungi, mainly Aphyllophorales) of Cuba have been studied and published in the last decades, mainly by three authors: the Russian mycologist M. A. Bondartseva, together with the Cuban S. Herrera Figueroa (Bondartseva 1983; Bondartseva and Herrera 1979 a,b; 1980 a,b; 1981 a,b; 1984

a,b; 1986, 1988, 1989, 1991; Bondartseva et al. 1992; Herrera and Bondartseva 1982, 1985), and the German mycologist H. Kreisel (Kreisel 1970 a,b; 1971), the last one being interested also in many other groups of fungi.

From Cuban polypores, the authors have published only *Hexagonia tenuis* (Kotlaba 1983, in Czech) and some new or rare species for the territory, viz. *Antrodia oleracea* (which was subsequently found to be a new species *Antrodia pini-cubensis* – see Vampola, Kotlaba and Pouzar 1994), *Ceriporia alachuana*, *C. purpurea*, *Coltriciella dependens*, *C. oblectabilis*, *Dichomitus squalens*, *Echinochaete brachypora*, *Pachykytospora alabamiae*, *Perenniporia tephropora* and *Wrightoporia lenta* (see Kotlaba, Pouzar and Ryvar den 1984). Many other, partly common polypore species, have however remained unpublished for more than thirty-six years until the present paper.

Cuba belongs phytogeographically to the subtropics (not the tropics as so often said in the mycological literature) of the New World and, subsequently, its mycoflora naturally differs considerably from that in Europe. Only very few polypores are identical with European species. The help of other mycologists from various countries was therefore inevitable, with the first author sending parts of Cuban collections for identification or revision to certain foreign mycologists. These were namely Dr. O. Fidalgo (Brasil) and his late wife Dr. M. E. P. Kauffmann Fidalgo, Professor J. L. Lowe (USA), Professor Dr. L. Ryvar den (Norway) and the late Dr. R. L. Steyaert (Belgium). The authors thank all these mycologists for their effective help.

During mycological excursions in Cuba, the first author was often accompanied by the Cuban biologist J. Ramón Cuevas, who collected together with him and particularly made field work considerably easier. Most of the collections, however, were made by the author, although a few were also made by other people, first of all by some botanists (their names are mentioned in the text with single collection). The trees and shrubs as hosts of wood-inhabiting fungi were identified partly by the Cuban botanist Ing. J. Acuña, and partly by the Czech expert (geobotanist) Dr. Ing. V. Samek. These two botanists (both deceased) have had the greatest merit in the correct identification of the hosts of the collected fungi, and they are also thanked. In many cases, the correct identification of hosts was not possible as the wood was either too rotten or the leaves, flowers or fruits were unattainable, as they were very high in the crowns of the trees, with the first author having insufficient time to attempt collecting a host, etc.

This paper includes all the collections of polypores identified to species, thus excluding those identified solely to their genus. For identification mostly books by Gilbertson and Ryvar den (1986, 1987), Larsen and Cobb-Poullé (1990), Murrill (1907, 1908) and Ryvar den and Johansen (1980) were used.

The names of Cuban provinces (districts) – abbreviated to Prov. – are used here in their older sense (as they were when the polypores were collected); now the

provinces are smaller (and therefore more numerous), having partly other names. The localities are arranged approximately from west to east. The names of the authors of this paper are abbreviated to the initials F. K. and Z. P.

LIST OF CUBAN POLYPORES DEPOSITED IN THE HERBARIUM PRM

Antrodia albida (Fr.: Fr.) Donk

Carpophores usually semiresupinate to resupinate, white, whitish to pale ochraceous with rather large pores (2-3 per mm). This polypore is well-known in Europe, where it grows as a saprophyte rather abundantly, mostly on beech. In Cuba it is evidently rare. There are only three by the first author (F. K.) collections from Cuba in PRM (with the identification of the second and third being uncertain).

Isla de Pinos (now Isla de la Juventud), near El Colony close to Siguanea, in the vicinity of Sta. Fé, on dead trunk of a frondose tree on the bank of a brook, 19. II. 1967 leg. F. et Libuše K., det. L. Ryvarden 11. 1. 1976 (PRM 878709). - Prov. Pinar del Rio, Sierra de los Organos Mountains, near the hotel Los Jazmines close to Viñales, on thin fallen trunk of *Brya ebenus*, 9. XII. 1966 leg. F. K., det. L. Ryvarden 15. 12. 1975 (PRM 878626). - Prov. La Habana, the city of Habana, in the University's Botanic Garden, on dead branch of *Terminalia catappa*, 19. IV. 1967 leg. F. K., det. L. Ryvarden 10. 1. 1976 (PRM 878693).

Antrodia carbonica (Overh.) Ryvarden et Gilb.

Syn.: *Poria carbonica* Overh.

A widely effused and fairly thick (up to 15 mm) polypore with tomentose margin and whitish, mostly round pores, 3-5 per mm.

Prov. Pinar del Rio, c. 3 km NW of Cortés near the small town of Pinar del Rio, on dead branch of *Pinus tropicalis*, 30. XII. 1966 leg. F. K. et J. Ramón Cuevas, det. L. Ryvarden 14. 11. 1975 (PRM 878644).

Antrodia gossypia (Speg.) Ryvarden

Syn.: *Tyromyces resupinatus* (Bourdot et Galzin) Bondartsev et Singer

The carpophores are resupinate with polygonal pores, which are white, later pale brownish, and have rather thick-walled generative hyphae.

Prov. Pinar del Rio, Sierra del Rosario Mountains, Cajalbana near La Mulata, on stump of *Pinus caribaea*, 24. XI. 1966 leg. et det. F. K., rev. 3. 9. 1993 F. K. et Z. P. (PRM 878656).

Antrodia pini-cubensis Vampola, Kotl. et Pouzar

See Vampola, Kotlaba and Pouzar (1994).

Ceriporia alachuana (Murrill) Halenb.

Ceriporia purpurea (Fr.) Donk

For both, see Kotlaba, Pouzar and Ryvar den (1984).

Ceriporia viridans (Berk. et Broome) Donk

Carpophores resupinate, thin, ochraceous to reddish with somewhat irregular pores, 3-6 per mm. In Europe, this is a rather abundant polypore but in Cuba it appears to be rare. There are only two by the first author (F. K.) collections in PRM from Cuba, both from the same locality and of the same date.

Prov. Las Villas, Sierra del Escambray Mountains near the small town of Trinidad, below Pico Potrerillo, on a dead branch of a frondose tree, 5. I. 1967 leg. F. K., det. J. L. Lowe (PRM 878629); the same locality, on *Ficus?* sp., leg. F. K., det. L. Ryvar den 13. I. 1976, rev. 2. 8. 1983 F. K. et Z. P. (PRM 878630).

Ceriporia xylostromatoides (Berk.) Ryvar den et I. Johans.

Syn.: *Poria xylostromatoides* (Berk.) Cooke

Carpophores widely resupinate, white to cream coloured, with a variable pore size (about 4 per mm), and fimbriate to lacerate pore edges. In PRM there are only three collections of this species by the first author (F. K.) from Cuba.

Prov. Pinar del Rio, Sierra del Rosario Mountains, Cajálbana near La Mulata, on fallen trunk of the palm *Coccothrinax miraguama*, 4. IV. 1967 leg. F. K., det. J. L. Lowe (PRM 878675). - Prov. La Habana, near El Salado close to Habana, on thin dying trunk of *Comocladia dentata*, 22. I. 1967 leg. F. K., det. J. L. Lowe (PRM 878699); same locality, on a thin dead trunk of *Eugenia buxifolia*, 5. II. 1967 leg. F. K., det. J. L. Lowe (PRM 885135).

Cinereomyces lindbladii (Berk.) Jülich

Syn.: *Poria cinerascens* (Bres. in Strasser) Sacc. et Sydow

Forming resupinate, whitish to pale grey carpophores; its skeletal hyphae dissolve in a KOH solution; the Cuban collection has, however, somewhat smaller pores (6-7 per mm). In Europe, a mostly common species growing preferably on dead conifers. It seems to be very rare in Cuba.

Prov. Oriente, Montecristo Mountains, near the village of Jamaica close to Quantánamo, on fallen trunk of *Pinus cubensis*, 19. III. 1967 leg. F. K., det. J. L. Lowe, rev. 7. 12. 2000 F. K. et Z. P. (PRM 878690).

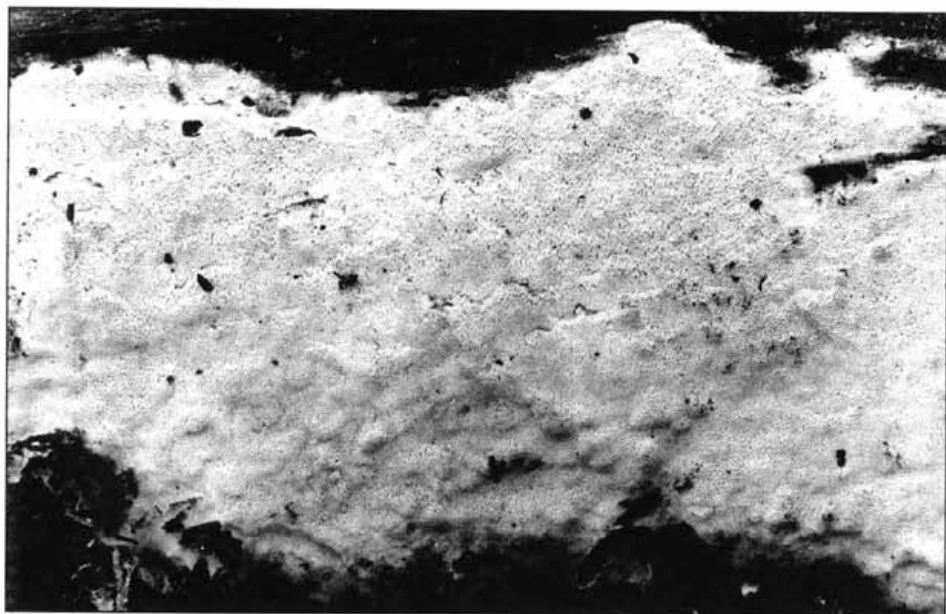


Fig. 1. *Ceriporia xylostromatoides* on a fallen trunk of the palm *Coccothrinax miraguama*, Cajalbana near La Mulata, 4. 4. 1967.

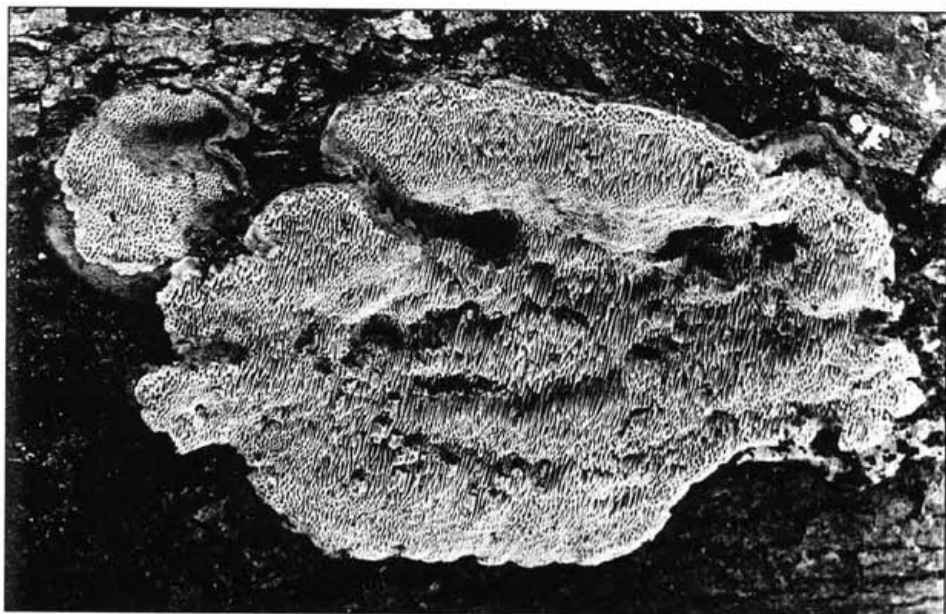


Fig. 2. *Corioloopsis byrsina* on a fallen branch of a frondose tree, near El Sonador close to Santiago de Cuba, 23. 3. 1967.



Fig. 3. *Corioloopsis floccosa* on a thin fallen trunk of *Coffea arabica* below Pico Potrerillo near Trinidad, 5. 1. 1967.



Fig. 4. *Corioloopsis fulvocinerea* on a thin dead trunk of *Brya ebenus*, Cajálbana near La Mulata, 4. 4. 1967.

Coltricia cinnamomea (Jacq.) Murrill

In Europe, as well as in Cuba, a rather rare species which differs from the common *C. perennis* (which the author did not find in Cuba) in its silky, lustrous, cinnamon-coloured pileus surface.

Prov. Pinar del Rio, near Sta. Bárbara close to Cortés, on sandy soil ("arena blanca") in a pine forest, X. 1966 leg. V. Samek, det. L. Ryvar den 1976 (PRM 885137). – Prov. Oriente, Sierra del Nipe Mountains, at 650 m alt., on bare soil in a pine forest, X. 1966 leg. V. Samek, det. F. K. 18. 3. 1974 (PRM 870904).

Coltriciella dependens (Berk. et M. A. Curtis) Murrill

Coltriciella oblectabilis (Lloyd) Kotl., Pouzar et Ryvar den

For both, see Kotlaba, Pouzar and Ryvar den (1984).

Corioloopsis byrsina (Mont.) Ryvar den

Carpophores semiresupinate to resupinate, very thin, flexible, isabelline. This species was described by Montagne from Cuba in 1842, and seems to be rather common there.

Prov. Pinar del Rio, Sierra de los Organos Mountains, nature reserve La Guira near the small town of Pinar del Rio, on dead fallen branch of *Guazuma tomentosa*, 26. I. 1967 leg. et det. F. K. (PRM 870887). – Prov. Las Villas, Sierra del Escambray Mountains, near the small town of Trinidad, Cuatro Caminos, on dead trunk of *Ficus?* sp., 4. I. 1967 leg. F. K., det. L. Ryvar den 18. 12. 1975 (PRM 878692). – Same province and mountains, Mataguá, on twig of a frondose tree, 6. I. 1967 leg. F. K., det. L. Ryvar den 5. 1. 1976 (PRM 878636). – Prov. Camagüey, Cabaniguan near Guáimaro, on dead branch of a frondose tree in a wet forest, 11. IV. 1967 leg. F. K., det. L. Ryvar den 6. 1. 1976 (PRM 878627). – Prov. Oriente, Sierra Maestra Mountains, in the valley of the Guamá rivulet above El Sonador near Chirivico close to Santiago de Cuba, on fallen branch of a frondose tree, 23. III. 1967 leg. F. K., det. L. Ryvar den 19. 1. 1976 (PRM 870875).

Corioloopsis floccosa (Jungh.) Ryvar den

Syn.: *Trametes rigida* Berk. et Mont.

In Cuba apparently rather abundantly growing on at least 5 hosts. The whole dimidiate carpophore is ochre to pale isabelline coloured and pores have a somewhat bluish tint.

Isla de Pinos (I. de la Juventud), on the slope of Loma la Cañada near Sta. Fé, on thin dead trunk of a frondose tree, 20. II. 1967 leg. et det. F. K. (PRM 887352). – Prov. Pinar del Rio, between La Fé and Cayuco near the small town of Pinar del

Rio, on dead branch of *Quercusagraeana*, 30. XI. 1966 leg. F. K. et J. Ramón Cuevas, det. L. Ryvarden 16. I. 1976 (PRM 878628). – Same province, Sierra de los Organos Mountains, near the hotel Los Jazmines close to Viñales, on fallen branch of *Byrsonima crassifolia*, 9. XII. 1966 leg. F. K., det. O. Fidalgo (PRM 887322, 887277); same locality, date and substrate, leg. F. K., det. L. Ryvarden 16. I. 1976 (PRM 878632). – Same province, "mogotes" (isolated steep limestone rocks) near Viñales, on thin dead trunk of *Ehretia tinifolia*, 3. IV. 1967 leg. et det. F. K. (PRM 887364); same locality and date, on fallen branch of a frondose tree, leg. F. K., det. L. Ryvarden 11. I. 1976 (PRM 878696). – Same province, Sierra del Rosario Mountains, Soroa near San Cristóbal, on fallen branch of a frondose tree, 4. II. 1967, leg. et det. F. K. (PRM 887276). – Prov. La Habana, near El Salado close to Habana, on fallen branch of *Eugenia burifolia*, 5. III. 1967 leg. F. K., det. L. Ryvarden 14. I. 1976 (PRM 878708). – Prov. Matanzas, Arroyo Bermejo near Jibacoa, on fallen branch of a frondose tree, 1. I. 1967 leg. et det. F. K. (PRM 878652). – Prov. Las Villas, Sierra del Escambray Mountains near the small town of Trinidad, below Pico Potrerillo, on thin fallen trunk of *Coffea arabica*, 5. I. 1967 leg. F. K., det. L. Ryvarden 19. I. 1976 (PRM 878637). – Prov. Oriente, Sierra Maestra Mountains, in the valley of the rivulet Guamá near El Sonador close to Chirivico in the vicinity of Santiago de Cuba, on fallen branch of a frondose tree, 23. III. 1967 leg. F. K., det. L. Ryvarden 10. I. 1976 (PRM 878649 – an uncertain identification). – Same province, Cuchillas de Toa Mountains, in the Jaguaní river valley between La Melba et Los Lirios near Baracoa, on fallen trunk of a frondose tree, 16. III. 1967, leg. et det. F. K. (PRM 885044).

Corioloopsis fulvocinerea Murrill

In Cuba not a rare polypore differing from the above species mainly in the isabelline to brown-fulvous colour of the pileus surface and in cinereous or murinous pores; from Cuba we know it growing on at least 3 hosts.

Prov. Pinar del Rio, Sierra de los Organos Mountains, near the hotel Los Jazmines close to Viñales, on wood of a frondose tree, 9. XII. 1966 leg. F. K., det. O. Fidalgo (PRM 870873). – Same province, Sierra del Rosario Mountains, Cajálbana near La Mulata, on dead branch of a frondose shrub, 24. XI. 1966 leg. et det. F. K. (PRM 887294); the same locality, on thin dead trunk of *Brya ebenus*, 4. IV. 1967 leg. F. K., det. O. Fidalgo (PRM 870870). – The same province and mountains, Soroa near San Cristóbal, on dead branch of a frondose tree, 13. I. 1967 leg. et det. F. K. (PRM 887306). – Prov. La Habana, city of Habana-Cabañas, on stump of *Ficus benjamina*, 19. XI. 1966 leg. F. K., det. L. Ryvarden 1. 1976 (PRM 878710). – Same province, near El Salado close to Habana, on dead branch of a frondose tree, 22. I. 1967 leg. et det. F. K. (PRM 887260). – Prov. Camagüey,

town of Camagüey, in a park called Casino, on dead branch of *Ficus religiosa*, 10. IV. 1967 leg. F. K. et J. Ramón Cuevas, det. F. K. (PRM 887286).

Corioloopsis polyzona (Pers.) Ryvarden

Syn.: *Trametes occidentalis* (Klotzsch) Fr.

This species has an avellaneous to brown pileus surface, isabelline colour of the hymenium, and the carpophores are mostly rather thick and firm. In Cuba it seems to be fairly common, growing on at least 8 different hosts.

Isla de Pinos (I. de la Juventud), San Juan near Sta. Fé, on dead trunk of *Bursera simaruba*, 28. II. 1967 leg. J. Ramón Cuevas, det. F. K. (PRM 887269). – Prov. Pinar del Río, between La Fé and Cayuco near the small town of Pinar del Río, on dead branch of *Quercus sagraeana*, 30. XI. 1966 leg. et det. F. K. (PRM 887283). – Same province, Sierra de los Organos Mountains, nature reserve La Guira near the small town of Pinar del Río, on dead trunk of *Zanthoxylon?* sp., 26. I. 1967 leg. et det. F. K. (PRM 885129). – Same province, Sierra del Rosario Mountains, on fallen branch of *Samanea saman* (?), 4. II. 1967 leg. et det. F. K., rev. L. Ryvarden 20. 12. 1975 (PRM 878641). – Same province, "finca" (estate) Guajaibon near Mariel, on dead branch of *Hura crepitans*, 23. XI. 1966 leg. et det. F. K. (PRM 870854). – Prov. La Habana, city of Habana, in the University's Botanic Garden, on dead branch of a frondose tree, 16. II. 1967 leg. et det. F. K. (PRM 885127). – Same city, on a felled trunk of *Hibiscus elatus* in the Botanic Garden of the Cuban Academy of Sciences, 27. XII. 1966 leg. et det. F. K. (PRM 885132). – Same city, Habana-Marianao, site called Laguito, on a dying trunk of a frondose tree in the garden of the Biological Institute of the Cuban Academy of Sciences, 6. III. 1967 leg. et det. F. K., rev. L. Ryvarden 11. 1. 1976 (PRM 878685). – Same city, bank of the river Almendares, on dead trunk of *Ficus* cf. *benjamina*, 9. III. 1967 leg. et det. F. K. (PRM 871068). – Prov. Las Villas, Sierra del Escambray Mountains near the small town of Trinidad, below Pico Potrerillo, on branches of a frondose tree, 5. I. 1967 leg. F. K. et J. Ramón Cuevas, det. F. K. (PRM 887369). – Prov. Oriente, Gran Tierra near Maisí, on dead trunk of *Gliricidia sepium*, 18. III. 1967 leg. V. Samek, det. F. K. (PRM 887282).

Cyclomyces iodinus (Mont.) Pat.

Syn.: *Cycloporellus iodinus* (Mont.) Murrill

An interesting fungus with thin sessile carpophores, densely zonate, ferruginous pileus surface and isabelline tubes. It seems to be rare in Cuba and there are only two by the first author (F. K.) collections in PRM.

Prov. Pinar del Río, inter La Fé et Cayuco near the small town of Pinar del Río, on dead branch of *Quercus sagraeana*, 30. XI. 1966 leg. et det.

F. K. (PRM 887279). – Same province, Sierra de los Organos Mountains, near the hotel Los Jazmines close to Viñales, on stump of *Quercus sagracana*, 9. XII. 1966 leg. et det. F. K. (PRM 870859).

Cyclomyces tabacinus (Mont.) Pat.

Syn.: *Cycloporellus barbatus* Murrill

Similar to the previous species differing mainly by the smaller pores (7–9 per mm vs. 4–6 per mm in *C. iodinus*) and the dark brown or reddish-brown colour of pileus. It is probably rare in Cuba.

Prov. Pinar del Rio, Sierra de los Organos Mountains, between San Vincente and La Palma near Viñales, on dead trunk of *Quercus sagraeana*, 2. XII. 1966 leg. F. K., det. L. Ryvarden (PRM 878663).

Dichomitus squalens (P. Karst.) D. A. Reid

Echinochaete brachypora (Mont.) Ryvarden

For both, see Kotlaba, Pouzar and Ryvarden (1984).

Dictyopanus pusillus (Lév.) Singer

Polyporus-like, very small carpophores with eccentric pileus and very small pores; stipe very short, almost lateral, pubescent; spores small, thin-walled, smooth, amyloid. It belongs in fact to the agarics (close to *Panellus*) and only simulate polypores. It is probably rare in Cuba.

Prov. Pinar del Rio, La Boca, Laguna del Tesoro, Ciénaga de Zapata, on dead branch of *Hibiscus tiliaceus*, 5. II. 1981 leg. V. Holubová-Jechová, det. F. K. as cf. *Polyporus tricholoma*, rev. 18. 3. 1999 F. K. et Z. P. (PRM 885173).

Favolus brasiliensis (Fr.) Fr.

Syn.: *Favolus friesii* Berk. et M. A. Curtis

Polyporus tenuiculus (P. Beauv.) Fr.

A polypore with white to pale ochraceous, smooth pileus, rather large, hexagonal pores (1–3 per mm) as well as large spores (9–12 × 2–3.5 µm). It seems to be rather rare in Cuba.

Prov. Pinar del Rio, near Los Palacios close to Consolación del Sur, on a dead trunk of *Ficus* cf. *benjamina*, 8. XII. 1966 leg. et det. F. K., rev. L. Ryvarden 15. 1. 1976 (PRM 878671).



Fig. 5. *Corioloopsis polyzona* on a dead branch of *Hura crepitans*, "finca" Guajaibon near Mariel, 23. 12. 1996.



Fig. 6. *Cyclomyces iodinus* on a stump of *Quercus sagraeana*, near the hotel Los Jazmines close to Viñales, 9. 12. 1966.



Fig. 7. *Favolus spathulatus* on a dead trunk of *Miconia elata*, near La Melba close to Baracoa, 15. 3. 1967.

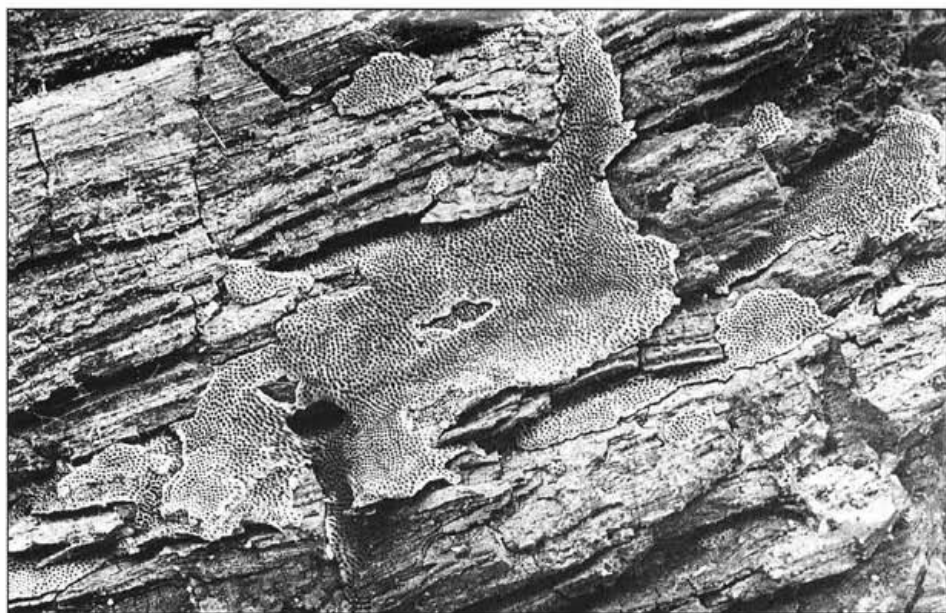


Fig. 8. *Fuscoporia carbonaria* on a dead burned trunk of *Pinus caribaea*, Cajalbana near La Mulata, 4. 4. 1967.

Favolus spathulatus (Junglh.) Lév.

Syn.: *Favolus mollucensis* Mont.

Differing from the previous species by the ochraceous to reddish-brown pileus with radial fibrils, smaller pores (3–5 per mm) as well as smaller spores (6–8.5 × 2–3 μm). It appears to be rare in Cuba.

Prov. Oriente, Cuchillas de Toa Mountains, Arroyo Prieto near La Melba close to Baracoa, on dead trunk of *Miconia elata*, 15. III. 1967 leg. F. K., det. L. Ryvarden 1976 (PRM 885151).

Fomes fasciatus (Sw.: Fr.) Cooke

Syn.: *Fomes marmoratus* (Berk. et M. A. Curtis) Cooke

A polypore very similar to the European *Fomes fomentarius* (L.: Fr.) Fr. from which it differs by its appanate-dimidiated shape of the carpophores, which become brown to blackish in age, and smaller pores (5 per mm) as well as spores (12–14 × 4–5 μm). It does not appear to be rare in Cuba.

Prov. Pinar del Río, Guanahacabibes near Las Martinas, on dead trunk of *Bursera simaruba*, 8. IV. 1967 leg. J. Křeček, det. F. K. (PRM 870861). – Same province, Sierra del Rosario Mountains, Soroa near San Cristóbal, on dead rotten trunk of a frondose tree, 3. II. 1967 leg. et det. F. K. (PRM 887272). – Prov. La Habana, city of Habana-Marianao, on dead trunk of a frondose tree (*Bombacaceae*) planted along a street, 20. XII. 1966 leg. et det. F. K. (PRM 871064).

Fomitopsis carnea (Blume et Nees) Imazeki

Syn.: *Fomes carneus* Blume et Nees

A tropical species parallel to the north-temperate *Fomitopsis rosea*, from which it differs by its smaller pores (5–7 per mm) and different hosts (frondose trees, not conifers). It seems to be very rare in Cuba.

Prov. Pinar del Río, Sierra del Rosario Mountains (no exact locality given), on wood of a frondose tree, 4. X. 1974 leg. S. Hejný, det. F. K. et Z. P. (PRM 878634).

Fuscoporia carbonaria (Berk. et Broome) Murrill

An interesting fungus having entirely resupinate brown carpophores with large pores (about 2 per mm) and hyaline spores. It seems to be bound to burned pine wood. It does not appear to be rare in Cuba.

Isla de Pinos (I. de la Juventud), Loma La Cañada, near Sta. Fé, on dead burned trunk of *Pinus tropicalis*, 20. II. 1967 leg. et det. F. K. (PRM 878662). – Prov. Pinar del Río, Sierra del Rosario Mountains, Cajalbana near La Mulata, on dead burned trunk of *Pinus caribaea*, 4. IV. 1967 leg. et det. F. K. (PRM 870908). –

Prov. Oriente, Montecristo Mountains, near the village of Jamaica close to Guantánamo, on fallen burned trunk of *Pinus cubensis*, 19. III. 1967 leg. et 1983 det. F. K. (PRM 878642). – Same province, Sierra de Nipe Mountains near Mayarí, on fallen burned trunk of *Pinus cubensis*, 13. III. 1967 leg. et det. F. K. (PRM 878531).

Ganoderma australe (Fr.) Pat.

Syn.: *Ganoderma tornatum* (Pers.) Bres.

A species very similar but most probably not conspecific with the European *G. adspersum* (Schulzer) Donk = *G. europaeum* Steyaert, as believed by some polyporologists. Carpophores dimidiate to ungulate with densely zonate and sulcate pileus surface (especially in the margin). It is probably rather abundant in Cuba.

Prov. La Habana, in the city of Habana-Marianao, a place called Laguito, on living trunk of a planted *Casuarina* sp., 13. XII. 1966 leg. et det. F. K. (PRM 870913). – Prov. Las Villas, on a slope of Mount Loma de Banao near Banao close to Sancti Spíritus, on living trunk of *Ficus* sp., 18. XI. 1966 leg. J. Bisse, det. R. L. Steyaert 7. 1. 1969 (PRM 870911). – Prov. Oriente, Cuchillas de Toa Mountains, in the Juguani river valley between La Melba and Los Lirios near Baracoa, on dead trunk of a frondose tree, 16. III. 1967 leg. F. K., det. R. L. Steyaert 7. 1. 1969 (PRM 870863).

Ganoderma resinaceum Boud. in Pat.

Carpophores dimidiate to ungulate and laccate, with a shining surface, with or more often without a stem; spores only finely echinulate. In Europe not rare in countries with warm climate, rather synanthropic.

Prov. La Habana, city of Habana-Cubanacan (western part of Habana), on stump in the park, 29. XI. 1964 leg. J. Komárek, det. F. K. et Z. P., 10. 1. 2002 (PRM 895622).

Ganoderma tuberculosum Murrill

It is somewhat similar to *G. australe* but has a roughly tuberculose pileus surface. It does not seem to be rare in Cuba.

Prov. Matanzas, Jagüey Grande, on the base of a dying *Citrus aurantium* cv. Valencia, 10. XI. 1967 leg. C. Paulech, det. R. L. Steyaert 13. 12. 1968 (PRM 870912). – Prov. Camagüey, town of Camagüey, in a park called Casino, on the base of dead trunk of *Ficus religiosa*, 10. IV. 1967 leg. F. K. et J. Ramón Cuevas, det. F. K., rev. R. L. Steyaert 7. 1. 1969 (PRM 870856).

Ganoderma weberianum (Bres. et Henn.) Steyaert

Syn.: *Ganoderma rivulosum* Pat. et C. W. Harris

A species having thin, dimidiate or short stipitate carpophores with an uneven, zonate, vividly red brown pileus surface. It appears to be rather rare in Cuba.

Isla de Pinos (I. de la Juventud), near Sta. Fé, on dead trunk of *Jambosa vulgaris* on the bank of a creek, 22. II. 1967 leg. F. K., det. R. L. Steyaert 6. 1. 1971 (PRM 871122). – Prov. La Habana, in the city of Habana-Marianao, site called Laguito, on living trunk of *Casuarina* sp. (cf. *C. equisetifolia*), 13. XII. 1966 leg. F. K., det. R. L. Steyaert 6. 1. 1969 et 6. 1. 1971 (PRM 870885).

Ganoderma zonatum Murrill

Syn.: *Ganoderma sulcatum* Murrill

Carpophores appanate with wood brown or mahogany coloured pileus surface and pale margin. This species was described by Murrill from Florida under two names in 1902. In Cuba it is probably not rare (in spite of the fact that F. K. has collected it there only once).

Isla de Pinos (I. de la Juventud), Estero del Pino near Sta. Bárbara (SW of Nueva Gerona), on dead trunk of the palm *Acoelorrhaphe wrightii*, 21. II. 1967 leg. F. K., det. R. L. Steyaert 23. 12. 1968 (PRM 871073).

Gloeophyllum mexicanum (Mont.) Ryvarden

Syn.: *Gloeophyllum berkeleyi* (Sacc.) Murrill

F. K. collected three species of the genus *Gloeophyllum* in Cuba. *G. berkeleyi* has the thickest carpophores with a partly poroid, partly lamelloid hymenophore and brown, glabrous pileus surface; the context is rusty brown. It grows on dead pine wood and it does not seem to be rare in Cuba.

Isla de Pinos (I. de la Juventud), Mount Loma La Cañada near Sta. Fé, on dead trunk of *Pinus tropicalis*, 20. II. 1967 leg. F. K., det. L. Ryvarden 4. 1. 1976 (PRM 878640). – Prov. Pinar del Rio, Sierra del Rosario Mountains, Cajálbana near La Mulata, on stump of *Pinus caribaea*, 25. XI. 1966 leg. F. K., det. L. Ryvarden 10. 1. 1976 (PRM 878647). – Prov. Oriente, Sierra de Nipe Mountains near Mayarí, on dead fallen trunk of *Pinus cubensis*, 13. 3. 1967 leg. et det. F. K. (PRM 887350).

Gloeophyllum sepiarium (Wulfen: Fr.) P. Karst.

Well known polypore from Europe, where it is quite common, but in Cuba it is not abundant, probably growing only on pines. Its carpophores have a typically rusty brown context.

Prov. Pinar del Rio, about 6 km S of Dimas near Mantua, on a dead fallen branch of *Pinus tropicalis*, 1. XII. 1966 leg. et det. F. K. (PRM 887313). – Same province, Sierra del Rosario Mountains, Cajálbana near La Mulata, all collections on dead branches of *Pinus caribaea*, 25. XI. 1966 leg. J. Ramón Cuevas et F. K., det. F. K. (PRM 887354); the same locality, 4. IV. 1967 (PRM 887274) and 5. IV. 1967 (PRM 870862), both leg. et det. F. K.

***Gloeophyllum striatum* (Sw.: Fr.) Murrill**

Syn.: *Lenzites rhabarbarina* Berk.

A typical American subtropical/tropical species having thin flexible avellaneous carpophores with an always thin, lamelloid hymenophore. In Cuba it rather abundantly occurs on at least 7 different hosts and grows mostly on conifers (pines), rarely also on frondose trees and shrubs (including palms).

Prov. Pinar del Rio, about 6 km S of Dimas near Mantua, on dead fallen branch of *Pinus tropicalis*, 1. XI. 1966 leg. V. Samek et F. K., det. F. K. (PRM 887253). – Same province, Playa de Bailen near the small town of Pinar del Rio, on dead trunk of *Ceiba pentandra* on a pasture, 29. XI. 1966 leg. F. K. et J. Ramón Cuevas, det. F. K. (PRM 887296). – Same province, Sierra del Rosario Mountains, near Las Terrazas, 6. XII. 1975 leg. R. Neuhäusl, det. F. K. 28. 1. 1983 (PRM 895614). – Same province and mountains, Cajálbana near La Mulata, on stump of *Pinus caribaea*, 24. XI. 1966 leg. et det. F. K. (PRM 887292); same locality and host, on dead fallen branch, 4. IV. 1967 leg. et det. F. K. (PRM 887326). – Prov. Matanzas, Punto Escondido near Jibacoa, on dead wood of a palm (*Sabal* sp. or *Coccothrinax* sp.), 20. XI. 1966 leg. et det. F. K. (PRM 887316). – Prov. Las Villas, Sierra del Escambray Mountains near the small town of Trinidad, below Pico Potrerillo, on thin, dead trunk of *Coffea arabica*, 5. I. 1967 leg. et det. F. K. (PRM 870868). – Sigua near Santiago de Cuba, on thin dead trunk of a frondose shrub, 27. II. 1967 (PRM 885128) and on burned stump of a frondose tree, 21. III. 1967 (PRM 885162), both leg. et det. F. K. – Prov. Oriente, Sierra del Nipe Mountains near Mayarí, at 510–530 m alt., on *Pinus cubensis*, X. 1966 leg. V. Samek, det. F. K. (PRM 885171) and in the same locality and on the same host, 13. III. 1967, leg. et det. F. K. (PRM 887343). – Same province, Cuchillas de Toa Mountains, Los Lirios near Baracoa in the Jaguaní river valley, on dead trunk of the palm *Bactris cubensis*, 16. III. 1967, leg. et det. F. K. (PRM 887363). – Same province and river valley, Arroyo Prieto near La Melba close to Baracoa, on dead trunk of a frondose tree, 15. III. 1967, leg. et det. F. K. (PRM 887301).

Grammothele lineata Berk. et M. A. Curtis

Syn.: *Grammothele polygramma* Berk. et M. A. Curtis

Porogramme duportii Pat.

An interesting species forming rather resupinate, whitish to greyish, very thin carpophores with rather big, net-like, shallow pores. It seems to be rather rare in Cuba.

Prov. Las Villas, Sierra del Escambray Mountains near the small town of Trinidad, Charco Azul, on dead trunk of frondose tree, 4. I. 1967 leg. F. K., det. J. L. Lowe (PRM 887371). – Prov. Oriente, Sierra de Nipe Mountains near Mayarí, on dead fallen trunk of *Pinus cubensis*, 13. III. 1967 leg. et det. F. K. (PRM 887359).

Hexagonia tenuis (Hook. in Kunth) Fr.

Syn.: *Hexagonia polygramma* Fr.

Hexagonia brevis Berk.

A beautiful polypore having sessile dimidiate to reniform carpophores with a glabrous, avellaneous brown, narrowly zonate pileus surface and alveolar, circular or more often hexagonal pores, mostly 0.5–1 mm or more in diam. It does not appear to be rare in Cuba.

Isla de Pinos (I. de la Juventud), Sierra de Casas Mountains, virgin forest near J. Martí House, on dried out branches, 22. XI. 1964 leg. J. Komárek, det. F. K. 24. 1. 1983 (PRM 895623). – Same island, near La Ceiba close to Sta. Fé, on dead branch of a frondose tree, 27. II. 1967 leg. J. Ramón Cuevas, det. F. K. (PRM 887271). – Prov. Pinar del Río, Sierra de los Organos Mountains, nature reserve La Guira near the small town of Pinar del Río, on dead fallen branch of *Guazuma tomentosa*, 26. I. 1967 leg. F. K., det. O. Fidalgo (PRM 885155); the same locality etc. (including the host), on dead branches in a living tree crown (PRM 871067). – Same province, Sierra del Rosario Mountains, "El Mogote" near Soroa close to San Cristóbal, on dead branch of a living tree crown, 14. I. 1967 leg. F. K., det. O. Fidalgo (PRM 885139); same locality and host, 3. II. 1967 leg. et det. F. K. (PRM 887309). – Same province and mountains, near Las Terrazas, host not mentioned, 6. XII. 1976, leg. R. Neuhäusl, det. F. K. 28. 1. 1983 (PRM 887357). – Prov. La Habana, near El Salado close to Habana, on dead branch of *Coccoloba uvifera*, 25. I. 1967, leg. J. Ramón Cuevas, det. F. K. (PRM 887273). – Prov. Oriente, Sierra Maestra Mountains, above El Sonador near Chirivico in the Guamá river valley, on dead branch of *Guazuma tomentosa*, 23. III. 1967 leg. et det. F. K. (PRM 871066).

Humphreya coffeata (Berk.) Steyaert

Syn.: *Ganoderma opacum* (Berk. et Mont.) Pat.

Carpophores stipitate with a concentrically subundulate, umber brown pileus surface and thick margin.

Prov. Oriente, on the foot of Mount Tetas de Santa Tereza near Baracoa, on dead trunk of a frondose tree, 17. III. 1967 leg. F. K., det. R. L. Steyaert 6. 1. 1969 (PRM 871072).

Junghuhnia kotlabae Pouzar

See Pouzar (2003).

Lenzites elegans (Fr.) Pat.

Syn.: *Daedalea repanda* Pers.

Daedalea palisoti Fr.

Daedalea amanitoides P. Beauv.

A rather big polypore, usually with very thin carpophores, a pure white to pale avellaneous pileus surface and mostly labyrinthiform to lamelloid hymenophore. It is rather abundant on frondose trees in Cuba (as well as in other subtropics and tropics).

Prov. Pinar del Rio, Sierra del Rosario Mountains, "Mulo" (Las Terrazas), host not mentioned, 26. V. 1985 leg. J. Komárek, det. F. K. et Z. P. 10. 1. 2002 (PRM 895618). – Same province and mountains, Soroa near San Cristóbal, on dead fallen branch of *Samanea saman*, 4. II. 1967 leg. et det. F. K. (PRM 887360). – Same province and mountains, El Salom, c. 450 m alt., host not mentioned, 8. XII. 1976 leg. R. Neuhäusl, det. F. K. 24. 1. 1983 (PRM 887331). – Prov. Las Villas, Sierra del Escambray, below Pico Potrerillo near the small town of Trinidad, on dead fallen branch of a frondose tree, 5. I. 1967 leg. et det. F. K. (PRM 887367). – Prov. Las Villas, Sierra del Escambray Mountains, Mayarí near the small town of Trinidad, on rotten trunk of *Zanthoxylon* sp., 4. I. 1967 leg. V. Samek et F. K., det. F. K. (PRM 870906). – Prov. Camagüey, Mount Californico near Navarro close to Esmeralda, on dead trunk of *Eugenia* sp., 14. X. 1966 leg. J. Bisse, det. F. K. (PRM 871961). – Prov. Oriente, Cuchillas de Toa Mountains, near La Melba close to Baracoa, on dead fallen trunk of a frondose tree, 15. III. 1967 leg. et det. F. K. (PRM 870855).



Fig. 9. *Gloeophyllum striatum* on a dead trunk of a frondose tree, near La Melba close to Baracoa, 15. 3. 1967.



Fig. 10. *Hexagonia tenuis* (view from above) on a dead branch of *Guazuma tomentosa*, near Soroa close to San Cristóbal, 14. 1. 1967.

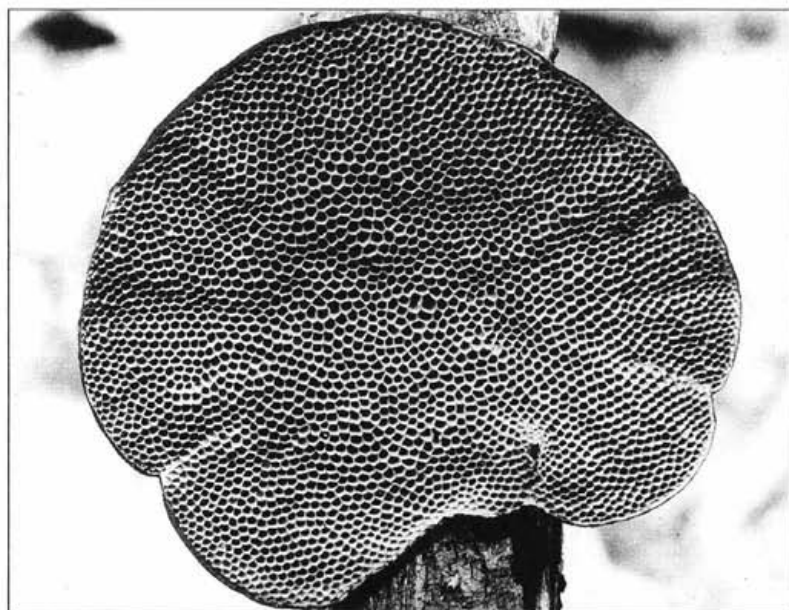


Fig. 11. *Hexagonia tenuis* (view from below) on a dead branch of *Guazuma tomentosa*; near Soroa close to San Cristóbal, 14. 1. 1967.



Fig. 12. *Phellinus gilvus* on a stump of *Pithecellobium dulce*; city of Habana, 27. 12. 1966.

***Loweporus inflexibilis* (Berk.) Ryvarden**

Syn.: *Fomes glaucoporus* Lloyd

An interesting, medium-sized polypore having unguulate carpophores with a ferruginous context and dark brown, horny encrusted, concentrically sulcate, glabrous pileus surface.

Prov. Las Villas, Sierra del Escambray Mountains near the small town of Trinidad, Mataguá, on rotten trunk of a frondose tree, 6. I. 1967 leg. F. K., det. L. Ryvarden 16. I. 1976 (PRM 878705).

***Nigrofomes melanoporus* (Mont.) Murrill**

Syn.: *Polyporus endophaeus* Berk.

This species was described by Montagne from Cuba in 1842 as *Polyporus melanoporus*. It has perennial, sessile, hard, dimidiate carpophores with a nearly smooth, fuliginous to blackish surface, hard, chestnut coloured context and distinctly stratified blackish tubes.

Prov. La Habana, at André Voisin Research Station near Guines, on fallen trunk of *Calophyllum antillanum*, 6. IV. 1967, leg. et det. F. K., rev. L. Ryvarden 20. I. 1976 (PRM 878659).

***Oxyporus latemarginatus* (Dur. et Mont. in Mont.) Donk**

Syn.: *Rigidoporus latemarginatus* (Dur. et Mont. in Mont.) Pouzar

Poria ambigua Bres.

This whitish, thinly resupinate polypore with rather big pores (1-3 per mm) and hyaline, cylindric, encrusted cystidia is well-known in Europe from many countries, growing on several frondose trees, but in Cuba it is evidently rather rare.

Isla de Pinos (I. de la Juventud), near Siguanea close to Sta. Fé, on thin dead trunk of *Byrsonima crassifolia*, 18. II. 1967 leg. F. K., det. L. Ryvarden 20. I. 1976 (PRM 878661). - Prov. Camagüey, Cabaniguan near Guáimaro, on thin dead trunk of *Bucida buceras*, 11. IV. 1967 leg. et det. F. K., rev. J. L. Lowe (PRM 887324).

***Pachykytospora alabamae* (Berk. et Cooke) Ryvarden**

See Kotlaba, Pouzar and Ryvarden (1984).

Perenniporia martius (Berk.) RyvardenSyn.: *Fomes sulcatus* Cooke

A species having ungluate to dimidiate carpophores with a dark brown to black shining crust on the pileus surface. It seems to be rare in Cuba.

Prov. Las Villas, Sierra del Escambray Mountains near the small town of Trinidad, Cuatro Caminos, on living trunk of a frondose tree, 4. I. 1967 leg. V. Samek et F. K., det. F. K., rev. J. L. Lowe (PR 870910).

Perenniporia tenuis (Schwein.) Ryvarden

A polypore having white or whitish resupinate carpophores with rather wide pores and ellipsoid, partly truncate spores. It is known to be not rare in Europe, but in Cuba it appears to be rather rare.

Prov. Las Villas, Sierra del Escambray Mountains near the small town of Trinidad, below Pico Potrerillo, on dead trunk of a frondose tree, 5. I. 1967 leg. et det. F. K., rev. F. K. et Z. P. 16. 3. 1983 (PRM 878695). – Prov. Oriente, near Sigua (a very dry place) close to Santiago de Cuba, on branch of a frondose bush, 27. II. 1967 leg. et det. F. K. (PRM 878684).

Perenniporia tephropora (Mont.) Ryvarden

See Kotlaba, Pouzar and Ryvarden (1984), where collection is cited; the following earlier should be added:

Prov. La Habana, city of Habana-Marianao, site called Laguito, on dead trunk of *Casuarina equisetifolia* planted along a street, 6. XII. 1966, leg. F. K., det. L. Ryvarden 18. 1. 1976 (PRM 871960).

Phellinus calcitratus (Berk. et M. A. Curtis) Ryvarden

An ungluate parasitic *Phellinus* species, very similar to the better known *P. robiniae*, from which it differs by the presence of acuminate hymenial setae.

Prov. Pinar del Rio, Sierra del Rosario Mountains, Soroa close to San Cristóbal, on living trunk of *Cordia gerascanthus*, 3. II. 1967 leg. et det. F. K. ut *P. badius*, rev. 28. 1. 1999 F. K. et Z. P. (PRM 796445). – Prov. Las Villas, "sabana" La Mar near the small town of Trinidad, on living trunk of a frondose tree, 5. I. 1967 leg. J. Bisse et F. K., det. F. K. ut *P. cf. weirianus*, rev. 11. 2. 1999 F. K. et Z. P. (PRM 887325).

Phellinus gilvus (Schwein.) Pat.Syn.: *Phellinus licnoides* (Mont.) Pat.

Carpophores appanate to conchate, sessile, with rather thin, uneven, isabelline to fulvous pilei, short tubes and avellaneous to umbrinous, circular to angular, small (6-8 per mm) pores. The specimens with thin, annual carpophores are sometimes considered as a separate species *P. licnoides*. A common species in Cuba as well as in other parts of the subtropics and tropics. From Cuba it is known from at least 8 different hosts.

Isla de Pinos (I. de la Juventud), Estero de Pino near Sta. Bárbara, on dead trunk of *Conocarpus erectus*, 21. II. 1967 leg. et det. F. K., rev. J. L. Lowe (PRM 878639). – Prov. Pinar del Rio, Sierra de los Organos Mountains, nature reserve La Guira near the small town of Pinar del Rio, on thin fallen trunk of a frondose tree, 26. I. 1967 leg. et det. F. K., rev. L. Ryvardeen 20. I. 1976 (PRM 878648). – Same province and mountains, near the hotel Los Jazmines close to Viñales, on dead root of *Quercus sagraeana*, 9. XII. 1966 leg. et det. F. K. (PRM 887270). – Same province, Sierra del Rosario Mountains, Soroa near San Cristóbal, on felled trunk of a frondose tree, 13. I. 1967 leg. et det. F. K. (PRM 871069); same locality, on dead root of *Samanea saman?*, 3. II. 1967 leg. et det. F. K. (PRM 887342). – Prov. La Habana, the city of Habana, in the Botanic Garden of the Cuban Academy of Sciences, on stump of *Pithecellobium dulce*, 27. XII. 1966 leg. et det. F. K. (PRM 870883). – Same province, near the estate ("finca") of Guajaibon close to Mariel, on stump of *Calophyllum antillanum*, 23. XI. 1966 leg. et det. F. K., rev. J. L. Lowe (PRM 878674); same locality and date, on stump of a frondose tree, leg. et det. F. K. (PRM 878704). – Prov. Matanzas, Arroyo Bermejo near Jibacoa, close to the town of Matanzas, on fallen trunk of the palm *Coccothrinax* sp., 1. I. 1967 leg. F. K., det. J. L. Lowe (PRM 887288). – Prov. Las Villas, Sierra del Escambray Mountains near the small town of Trinidad, Mataguá, on fallen trunk of a frondose tree, 4. I. 1967, leg. et det. F. K. (PRM 887287). – Same province and mountains, bellow Pico Potrerillo, on dead trunk of *Ficus* sp., 5. I. 1967 leg. et det. F. K. (PRM 870878). – Prov. Camagüey, Cabaniguan near Guáimaro, on dead trunk of a frondose tree, 11. IV. 1967 leg. F. K., det. J. L. Lowe (PRM 887328); same locality and date, on thin dead trunk of *Bucida buceras*, leg. et det. F. K., rev. J. L. Lowe (PRM 887259). – Prov. Oriente, Cuchillas de Toa Mountains, in the Jaguaní river valley near La Melba close to Baracoa, on dead trunk of a frondose tree, 15. III. 1967 leg. et det. F. K. (PRM 887298). – Same province and mountains, La Perrera near Baracoa, on wood of a frondose tree (fence), 17. III. 1967 leg. F. K., det. L. Ryvardeen (PRM 878706). – All collections cited were revised on 25. 2. 1999 by F. K. et Z. P.

Phellinus merillii (Murrill) Ryvarden

A *Phellinus* species forming dimidiate to unguulate, concentrically sulcate carpophores with a shiny golden luster on the broken surface of the context, coloured, thin-walled spores, and without setae.

Prov. Pinar del Río, Bahía Honda near Mariel, in cavity of a living trunk of *Avicennia nitida*, 7. XII. 1966 leg. F. K., det. L. Ryvarden, rev. 18. 2. 1999 F. K. et Z. P. (PRM 878681).

Phellinus punctatus (Fr.) Pilát

An entirely resupinate species without setae and with dextrinoid spores, occurring rather commonly in Europe as a parasite on especially willows and hazel, but in Cuba not so abundant and infecting quite different hosts.

Isla de Pinos (I. de la Juventud), on a slope of Mount Loma la Cañada near Sta. FÉ, on small dead trunk of a frondose tree, 20. II. 1967 leg. F. K., det. 4. 3. 1999 F. K. et Z. P. (PRM 887333). – Prov. Pinar del Río, Sierra del Rosario Mountains, on thin dead trunk of *Brya ebenus*, 25. XI. 1966 leg. F. K., det. L. Ryvarden 22. 1. 1976 (PRM 878651). – Prov. La Habana, city of Habana, in the Botanic Garden of the Cuban Academy of Sciences, on living trunk of *Caesalpinia spinosa*, 27. XII. 1966 leg. et det. F. K. (PRM 887321). – Same city, Habana-Marianao, site called Laguito, in a garden, on thin dying trunk of *Citrus chinensis*, 19. XII. 1966 leg. F. K., det. L. Ryvarden 23. 1. 1976 (PRM 870865). – Prov. Matanzas, Arroyo Bermejo near Jibacoa, on dead branch of a frondose tree, 1. I. 1967 leg. F. K., det. L. Ryvarden 18. 1. 1976 (PRM 887356 – uncertain identification). – Prov. Las Villas, Sierra del Escambray Mountains, Mataguá near the small town of Trinidad, on dead branch of a frondose tree, 6. I. 1967 leg. et det. F. K., rev. J. L. Lowe (PRM 887258). – Prov. Camagüey, Sola, on *Citrus aurantium* cv. Valencia, 22. III. 1968 leg. C. Paulech, det. F. K. (PRM 887300).

Phellinus rimosus (Berk.) Pilát

A *Phellinus* species forming unguulate, indurate carpophores with a cracking pileus surface, with coloured thick-walled spores, and without setae.

Prov. Oriente, near Imias close to Guantánamo, on dead thin trunk of *Caesalpinia* sp., 18. III. 1967 leg. et det. F. K. ut *P. badius* and under the same name rev. J. L. Lowe and L. Ryvarden 20. 1. 1976, newly rev. 14. 1. 1999 F. K. et Z. P. (PRM 878638).

Phellinus robiniae (Murrill) A. Ames

An unguulate, rather big and hard *Phellinus*, the pileus surface often cracking, with thick-walled, reddish brown spores, and without setae. Not rare in Cuba.



Fig. 13. *Phellinus robiniae* on the base of a living trunk of *Cordia gerascanthus* (view from above); near Soroa close to San Cristóbal, 4. 2. 1967.



Fig. 14. *Phellinus robiniae* on the base of a living trunk of *Cordia gerascanthus* (view from below); near Soroa close to San Cristóbal, 4. 2. 1967.



Fig. 15. *Pilatoporus palustris* on a stump of *Pinus caribaea*; Cajalbana near La Mulata, 5. 4. 1967.



Fig. 16. *Pogonomyces hydnooides* on a fallen trunk of a frondose tree (*Samanea saman*?); Soroa near San Cristóbal, 14. 1. 1967.

Prov. Pinar del Rio, Sierra del Rosario Mountains, at a waterfall called "El Saldo" near Soroa close to San Cristóbal, on base of a living trunk of *Cordia gerascanthus*, 4. II. 1967 leg. et det. F. K. ut *P. badius*, rev. 7. 2. 1999 F. K. et Z. P. (PRM 871126, and specimens in boxes, no. 1927); same locality (and perhaps host), 3. XII. 1975 leg. O. Večeřová, det. F. K. ut *P. badius*, rev. 14. 2. 1999 F. K. et Z. P. (PRM 885140). – Prov. Oriente, Tacre near Imias close to Guantánamo, on living trunk of *Guaiacum officinale*, 22. III. 1967 leg. et det. F. K. ut *P. badius*, rev. 14. 1. 1999 F. K. et Z. P. (PRM 796446).

Phellinus rufitinctus (Berk. et M. A. Curtis ex Cooke) Pat.

Syn.: *Fuscoporella nicaraguensis* Murrill

This species has annual or biennial effused carpophores, with tubes separated from the context by a black line; hymenial setae abundant, subulate.

Prov. Pinar del Rio, Sierra de los Organos Mountains, near the hotel Los Jazmines close to Viñales, on dead fallen branch of *Quercus sagraeana*, 9. XII. 1966 leg. F. K., det. L. Ryvarden (PRM 887284).

Phellinus undulatus (Murrill) Ryvarden

A quite resupinate *Phellinus* species with an undulate margin and whitish-stuffed avellaneous tubes.

Prov. Pinar del Rio, Sierra de los Organos Mountains, near the hotel Los Jazmines close to Viñales, on stump of *Quercus sagraeana*, 9. XII. 1966 leg. F. K., det. L. Ryvarden 22. 1. 1976 (PRM 878683).

Phellinus wahlbergii (Fr.) D. A. Reid

Syn.: *Phellinus zealandicus* (Cooke) G. Cunn.

Pyropolyporus robinsoniae Murrill

Carpophores unguulate to effused-reflexed with rather small pores (4–6 per mm) and most setae being hooked.

Prov. Oriente, Cuchillas de Toa Mountains, in the Jaguaní river valley, between La Melba et Los Lirios near Baracoa, on living trunk of *Terminalia nipensis?*, 16. III. 1967 leg. et det. F. K., rev. J. L. Lowe (PRM 870891).

Physisporinus sanguinolentus (Alb. et Schwein.: Fr.) Pilát

Syn.: *Rigidoporus sanguinolentus* (Alb. et Schwein.: Fr.) Donk

A resupinate, thin, whitish polypore reddening after bruising. It is rather common in Europe but in Cuba it seems to be very rare.

Prov. Pinar del Río, Sierra del Rosario Mountains, Cajálbana near La Mulata, on fallen trunk of the palm *Coccothrinax miraguama*, 25. XI. 1966 leg. et det. F. K. (PRM 878664).

Pilatoporus palustris (Berk. et M. A. Curtis) Kotl. et Pouzar

Syn.: *Fomitopsis palustris* (Berk. et M. A. Curtis) Gilb. et Ryvarden

White to slightly ochraceous, sessile, dimidiate polypore with short tubes (2-6 mm) and a fragile context. In Cuba it is locally not rare; however, it occurs there solely on pines.

Isla de Pinos (I. de la Juventud), "sabanás" (plains with poor, mostly grassy vegetation) bellow Mount Loma La Cañada near Sta. Fé, on stump of *Pinus tropicalis*, 20. II. 1967 leg. V. Samek, det. F. K., rev. F. K. et Z. P. 1. 2. 1990 (PRM 87090); same island, near Arroyo Grande close to Sta. Fé, on fallen trunk of *Pinus tropicalis*, 27. II. 1967 leg. V. Samek, det. F. K. et Z. P. 1. 2. 1990 (PRM 870914). – Prov. Pinar del Río, ca. 3 km NW of Cortés near the small town of Pinar del Río, on dead trunk of *Pinus tropicalis*, 30. XI. 1966 leg. et det. F. K., rev. F. K. et Z. P. 1. 2. 1990 (PRM 870902). – Same province, Sierra del Rosario Mountains, Cajálbana near La Mulata, on stump of *Pinus caribaea*, 25. XI. 1966 leg. et det. F. K. (PRM 878668); same locality and host, on dead branch, 5. IV. 1967 leg. F. K., det. F. K. et Z. P. 1. 2. 1990 (PRM 870907, 870905); same locality, date and host, leg. et det. F. K., rev. F. K. et Z. P. 1. 2. 1990 (PRM 870898).

Pogonomyces hydroides (Sw.: Fr.) Murrill

Syn.: *Hexagonia hydroides* (Sw.: Fr.) M. Fidalgo

An interesting polypore forming annual, sessile, dimidiate to conchate carpophores with a deep bay to nearly black pileus surface covered by thick rigid hairs (in age often disappearing) and small (3-4 per mm), circular, umbrinous pores. This is a typical and common polypore in the American subtropics and tropics including Cuba, where it is known to be growing on at least 9 different hosts (frondose trees and shrubs).

Isla de Pinos (I. de la Juventud), Sierra de Casas Mountains, virgin forest near J. Martí House, 21. IX. 1964 leg. J. Komárek, det. Z. P. (PRM 895615). – Same island, near Sigüanea close to Sta. Fé, on thin dead trunk of *Byrsonima crassifolia*, 18. II. 1967 leg. et det. F. K. (PRM 878646). – Prov. Pinar del Río, between La Fé and Cayuco close to the small town of Pinar del Río, on dead branches of *Quercus sagraeana*, 30. XI. 1966 leg. F. K. et J. Ramón Cuevas, det. F. K. (PRM 887327). – Same province, Playa de Bailen near the small town of Pinar del Río, on dead trunk of *Ceiba pentandra* (?), 29. XI. 1966 leg. et det. F. K. (PRM 887280). – Same province, Sierra del Rosario Mountains, "El Mogote" near Soroa close to San

Cristóbal, on fallen trunk of a frondose tree (*Samanea saman?*), 14. I. 1967 leg. et det. F. K. (PRM 870853). – Same province, Cajálbana near La Mulata, on fallen twig of *Myrica cerifera*, 24. XI. 1966 leg. et det. F. K. (PRM 887307); same locality, date and collector, on dead branch of a frondose tree (PRM 887348); same locality, on thin dead trunk of *Byrsonima crassifolia*, 4. IV. 1967 leg. F. K. et J. Ramón Cuevas, det. F. K. (PRM 887365). – Prov. La Habana, city of Habana-Cubanacan, near a site called Laguito, on root of *Ficus* sp., 29. XI. 1964 leg. J. Komárek, det. F. K. 24. 1. 1983 (PRM 895616). – Same province and locality, on a dead trunk of *Casuarina equisetifolia*, 1. II. 1967 leg. et det. F. K. (PRM 887264). – The same province, El Salado near Habana, on a dead branch of *Comocladia dentata*, 22. I. 1967 leg. et det. F. K. (PRM 887295). – Prov. Matanzas, Punto Escondido near Jibacoa, on wood of a frondose tree, 20. XI. 1966 leg. et det. F. K. (PRM 887303). – Same province, Arroyo Bermejo near Jibacoa, on dead branch of *Guazuma tomentosa*, 1. I. 1967 leg. et det. F. K. (PRM 887340). – Same province, Varadero near the town of Matanzas, on stump of *Casuarina equisetifolia*, 19. IX. 1986 leg. V. Samek, det. F. K. (PRM 887370). – Prov. Las Villas, Sierra del Escambray Mountains near the small town of Trinidad, below Pico Potrerillo, on dead branch of *Coffea arabica*, 5. I. 1967 leg. et det. F. K. (PRM 887254). – Prov. Camagüey, town of Camagüey, in a park called Casino, on dead branch of *Ficus religiosa*, 10. IV. 1967 leg. et det. F. K. (PRM 887291). – Prov. Oriente, Cuchillas de Toa Mountains, Los Lirios near Baracoa in the Jaguaní river valley, on dead trunk of a frondose tree, 16. III. 1967 leg. et det. F. K. (PRM 887329, 878707). – Same province, mountains and river valley, between La Melba and Los Lirios near Baracoa, on dead trunk of a frondose tree, 16. III. 1967 leg. et det. F. K. (PRM 887361). – Same province, Sierra Maestra Mountains, in the Guamá river valley above El Sonador near Chirivico close to Santiago de Cuba, on dead branch of *Guazuma tomentosa*, 23. III. 1967 leg. et det. F. K. (PRM 887262).

***Polyporus guianensis* Mont.**

Syn.: *Polyporus wrightii* Murrill

A small polypore having a very short (about 1 cm), brownish black stipe and rather wide pores (2–3 per mm). This species was described by Murrill from Cuba in 1907 (no exact locality is given) but it seems to be rare there.

Prov. Oriente, Sierra de Nipe Mountains near Mayarí, in a rivulet valley under Loma Mensura, c. 800 m alt., on wood, 15. X. 1966 leg. V. Samek, det. O. Fidalgo 1968 (PRM 887351).

Polyporus lepriouri Mont.Syn.: *Polyporus subelegans* Murrill

A small, coriaceous, whitish to ochraceous species with extremely small pores (about 10 per mm).

Prov. Oriente, Cuchillas de Toa Mountains, Arroyo Prieto near La Melba close to Baracoa, on rotten wood of a frondose tree, 15. III. 1967, leg. V. Samek, det. L. Ryvarden 8. 1. 1976 (PRM 878702).

Polyporus tenuiculus (P. Beauv.) Fr.Syn.: *Favolus brasiliensis* (Fr.) Fr.

A rather small species (pileus 2-4 cm wide) with a thin, reniform, tomentose pileus, growing in subtropical and tropical America. It was described by Murrill from Florida under the names *Hexagonia floridana* and *H. reniformis*, from Puerto Rico as *H. wilsonii*. It is uncommon or rather rare in Cuba.

Prov. Las Villas, Sierra del Escambray Mountains near the small town of Trinidad, below Pico Potrerillo, on dead branch of a frondose tree, 5. I. 1967 leg. F. K., det. F. K. et Z. P. 2. 9. 1993 (PRM 878672). – Prov. Oriente, Cuchillas de Toa Mountains, Los Lirios near Baracoa in the Jaguaní river valley, on wood of a frondose tree, 16. III. 1966 leg. et det. F. K. (PRM 888159).

Polyporus tricholoma Mont.

A polypore having small (1-3 cm in diam.), circular, glabrous pilei (1-3 cm) with a rigid, thin, ciliate margin and very slender, pallid, central stipe. It was described from Cuba in 1837 and is not rare there.

Prov. Matanzas, Punto Escondido near Jibacoa, on fallen twig of a frondose tree, 20. XI. 1966 leg. et det. F. K. (PRM 870884); same locality and host, 21. XII. 1966 leg. J. Ramón Cuevas et F. K., det. F. K. (PRM 870869). – Same province, Arroyo Bermejo near Jibacoa, on fallen twigs of a frondose tree or shrub, 31. XII. 1966 leg. et det. F. K. (PRM 887290). – Prov. Oriente, Cuchillas de Toa Mountains, on stump of a frondose tree, 15. III. 1967 leg. et det. F. K. (PRM 870892). – Same province and mountains, Arroyo Prieto near La Melba in the Jaguaní river valley, on rotten wood of a frondose tree, 16. III. 1967 leg. F. K., det. F. K. et Z. P. 3. 9. 1993 (PRM 878669).

Poria albostygia (Berk. et M. A. Curtis) Lloyd

An interesting species remarkable by its long, white tubes with very small, black pores (8 per mm). This polypore was described from Cuba in 1868 and is probably rare there.

Prov. La Habana, near André Voisin Research Station close to Guines, on fallen trunk of *Calophyllum antillanum*, 6. IV. 1967 leg. F. K., det. J. L. Lowe (PRM 878645).

***Poria carneola* Bres.**

Carpophores resupinate, cream to yellow when fresh and pinkish to brownish when dried.

Prov. Pinar del Rio, Sierra de los Organos, S. del Sumidera Mountains, in the Pica Pica valley, c. 95 m alt., on dead trunk of a frondose tree, 10. IV. 1981 leg. V. Holubová-Jechová, det. F. K. et Z. P. 27. 3. 1991 (PRM 870888).

***Poria phlebiaeformis* Berk.**

A thin, resupinate *Poria* with orange tubes and small (5–6 per mm), subangular pores; in Cuba but also elsewhere it appears to be very rare.

Prov. Pinar del Rio, Sierra de los Organos Mountains, near the hotel Los Jazmines close to Viñales, on fallen branch of *Byrsonima crassifolia*, 9. XII. 1966 leg. F. K., det. J. L. Lowe (PRM 878680).

Several other *Poria* species remained alas unidentified; these collections are also deposited in PRM.

***Pseudofavolus cucullatus* (Mont.) Pat.**

Syn.: *Hexagonia taxodii* Murrill

This polypore has thin, pileate, dimidiate carpophores with a whitish to ochraceous, smooth pileal surface and pores 2–3 per mm. It seems to be rare in Cuba.

Prov. Pinar del Rio, Sierra del Rosario Mountains, between Bahía Honda and San Cristóbal, on wood of a frondose tree, X. 1966 leg. V. Samek, det. L. Ryvar den 1976 (PRM 885131).

***Pycnoporus sanguineus* (L.: Fr.) Murrill**

A remarkable polypore growing in subtropical and tropical regions of the Old as well as New World. It differs from the similar and mostly in temperate zone occurring species *P. cinnabarinus* (Jacq.: Fr.) P. Karst. mainly by the thinner pileus with an acute margin and bright red, lustrous pileus surface. This is a common polypore in Cuba, which was found at least on 12 different hosts, mostly frondose trees and shrubs, and exceptionally also on conifers (pines).

Prov. Pinar del Rio, between La Fé and Cayuco near the town of Pinar del Rio, on dead branch of *Quercus sagraeana*, 30. XI. 1966 leg. F. K. et J. Ramón Cuevas,

det. F. K. (PRM 887304). – Same province, Sierra de los Organos Mountains, between San Vicente and La Palma near the small town of Pinar del Rio, on fallen branch of *Q. sagraeana*, 2. XII. 1966 leg. V. Samek et F. K., det. F. K. (PRM 887266). – Same province, Sierra del Rosario Mountains, no exact locality given, 4. X. 1974 leg. S. Hejný, det. F. K. 16. 11. 1974 (PRM 870867). – Same province and mountains, Soroa near San Cristóbal, on felled trunk of a frondose tree (*Samanea saman?*), 14. I. 1967 leg. et det. F. K. (PRM 870872). – Same province and mountains, Cajalbana near La Mulata, on dead twigs of *Myrica cerifera*, 24. XI. 1966 leg. et det. F. K. (PRM 887312); same locality and date, on a base of the base of leaf (petiole) of the palm *Copernicia* sp., leg. J. Ramón Cuevas et F. K., det. F. K. (PRM 887334, 887336). – Same province and mountains, in the vicinity of Las Terrazas, no host given, 6. XII. 1976 leg. R. Neuhäusl, det. F. K. 28. 1. 1983 (PRM 887353). – Same province, Herradura near Cabañas, on dead branch of *Conocarpus erectus*, 9. IV. 1967 leg. et det. F. K. (PRM 885170). – Prov. La Habana, city of Habana, on felled trunk of *Albizia lebeck* in the Botanic Garden of the Cuban Academy of Sciences, 27. XII. 1966 leg. et det. F. K. (PRM 885148). – Same province, near El Salado close to Habana, on thin dead trunk of *Comocladia dentata*, 22. I. 1967 leg. et det. F. K. (PRM 885134). – Prov. Matanzas, Punto Escondido near Jibacoa, on wood of a palm (*Sabal* sp. or *Coccothrinax* sp.), 20. XI. 1966 leg. J. Bartoš et F. K., det. F. K. (PRM 887317). – Same province, Varadero near the town of Matanzas, on dead trunk of *Ceiba pentandra*, 2. XII. 1975 leg. O. Večeřová, det. J. Kubička (PRM 885175). – Prov. Las Villas, "sabana" near Manacas, on thin dead trunk of *Brya ebenus* (PRM 887293) and *Bucida spinosa* (PRM 887302), both 9. II. 1867 leg. et det. F. K. – Prov. Oriente, Cuchillas de Toa Mountains, between La Melba and Los Lirios near Baracoa, bank of the Jaguaní river, on dead trunk of a frondose tree, 16. III. 1967 leg. et det. F. K. (PRM 887285). – Same province, Montecristo Mountains, near the village of Jamaica close to Guantánamo, on dead branches of *Pinus cubensis*, 19. III. 1967 leg. et det. F. K. (PRM 887255).

Rigidoporus lineatus (Pers.) Ryvarden

Syn.: *Polyporus zonalis* Berk.

Rigidoporus surinamensis (Miq.) Murrill

A polypore forming small, sessile, dimidiate carpophores with rigid, isabelline, imbricate pilei, thin, acute margins and small pores (6 per mm). It does not seem to be rare in Cuba, especially in the eastern part of the country. It has been observed on at least 3 hosts.

Prov. Pinar del Rio, Sierra del Rosario Mountains, "Mulo" (Las Terrazas), host not mentioned, 26. V. 1985 leg. J. Komárek, det. F. K. et Z. P. 10. 1. 2002 (PRM 895617). – Prov. La Habana, near André Voisin Research Station close

to Güines, on fallen trunk of *Calophyllum antillanum?*, 6. IV. 1967 leg. et det. F. K. (PRM 878653). – Prov. Las Villas, Sierra del Escambray Mountains, under Pico Potrerillo near the small town of Trinidad, on fallen branch of a frondose tree, 5. I. 1967 leg. et det. F. K. (PRM 878682). – Prov. Oriente, Sierra del Nipe Mountains near Mayarí, under Loma Mensura, host not mentioned, 15. X. 1966 leg. V. Samek, det. F. K. (PRM 887349). – Same province, Cuchillas de Toa Mountains, near La Melba close to Baracoa, on frondose wood of a small wooden bridge (PRM 887330) and on fallen dead trunk of a frondose tree (PRM 870860), both 15. III. 1967 leg. et det. F. K. – Same province, Tetas de Santa Tereza Mountain near Baracoa, on dead trunk of the palm *Cocos nucifera* (PRM 870857) and on rotten trunk of *Gliricidia sepium* (PRM 870882), both 17. III. 1967 leg. et det. F. K.

Rigidoporus vinctus (Berk.) Ryvar den

Syn.: *Poria carneopallens* (Berk.) Cooke

This polypore forms widely effused, mostly thin and hard carpophores with very small, ochre-pink pores (6–12 per mm). It is rather rare in Cuba and grows only on dead frondose trees.

Prov. Pinar del Rio, the "finca" Guajaibón near Mariel, on dead fallen branch of *Hura crepitans*, 23. XI. 1966 leg. et det. F. K., rev. J. L. Lowe (PRM 870858). – Prov. Las Villas, Sierra del Escambray Mountains, on a fallen dead trunk of frondose tree, 6. I. 1967 leg. F. K., det. J. L. Lowe (PRM 887315). – Prov. Oriente, Cuchillas de Toa Mountains, Los Lirios near Baracoa in the Jaguaní river valley, on dead trunk of a frondose tree, 16. III. 1967 leg. F. K., det. L. Ryvar den 20. 1. 1976 (PRM 870886).

Tinctoporellus epimiltinus (Berk. et Broome) Ryvar den

Syn.: *Poria borbonica* Pat.

A thin, resupinate polypore with very small (7–9 per mm), grey to beige pores, which is remarkable by its orange red to cinnamon colour in wood layers under the carpophores. It does not appear to be rare in Cuba.

Prov. Pinar del Rio, Sierra del Rosario Mountains, Soroa near San Cristóbal, on dead trunk of *Bursera simaruba*, 12. I. 1967 leg. F. K., det. L. Ryvar den 6. 1. 1976 (PRM 878643); same locality, on stump of *Jambosa vulgaris*, 13. I. 1967 leg. F. K., det. L. Ryvar den 16. 1. 1976 (PRM 878689). – Prov. Las Villas, Sierra del Escambray Mountains near the small town of Trinidad, Cuatro Caminos, on dead trunk of *Ficus* sp., 4. I. 1967 leg. et 27. 11. 1981 det. F. K. (PRM 878687). – Same province and mountains, Mataguá near the small town of Trinidad, on dead trunk of a frondose tree, 6. I. 1967 leg. et 27. 11. 1981 det. F. K. (PRM 878655). –

Prov. Oriente, Cuchillas de Toa Mountains, Arroyo Prieto near La Melba close to Baracoa, on dead trunk of a frondose tree, 15. III. 1967, leg. F. K., det. L. Ryvar den 12. 1. 1976 (PRM 878700). – Same province, mountains and host, between La Melba and Los Lirios near Baracoa, in the Jaguaní river valley, 16. III. 1967 leg. F. K., det. J. L. Lowe (PRM 878694).

Trametes cotonea (Pat. et Har.) Ryvar den

A species mostly forming thin, effused-reflexed, medium-sized carpophores with a flat, in age glabrous, dull, sulcate pileus. It does not seem to be rare in Cuba.

Prov. Las Villas, Sierra del Escambray Mountains near the small town of Trinidad, Mataguá, on fallen branch of a frondose tree, 4. I. 1967 leg. F. K., det. O. Fidalgo (PRM 870894). – Prov. Oriente, Sierra Maestra Mountains, in the Guamá river valley above El Sonador near Chirivico close to Santiago de Cuba, on fallen trunk of a frondose tree, 23. III. 1967 leg. F. K., det. L. Ryvar den 4. 1. 1976 (PRM 878633).

Trametes cubensis (Mont.) Sacc.

A rather large, sessile, dimidiate polypore with a partly brown or red pileus surface from the base, described from Cuba (Habana) in 1837, where it does not seem to be rare.

Prov. Pinar del Rio, Sierra del Rosario Mountains, Soroa near San Cristóbal, on rotten trunk of a frondose tree, 3. II. 1967 leg. F. K., det. O. Fidalgo (PRM 870895). – Prov. Las Villas, Sierra del Escambray Mountains near the small town of Trinidad, Mataguá, on fallen branch of a frondose tree, 4. I. 1967 leg. F. K., det. O. Fidalgo (PRM 870894). – Prov. Oriente, Sierra Maestra Mountains, in the Guamá river valley above El Sonador near Chirivico close to Santiago de Cuba, on fallen trunk of a frondose tree, 23. III. 1967 leg. F. K., det. L. Ryvar den 5. 1. 1976 (PRM 878679). – Same province and host, Cuchillas de Toa Mountains, Jaguaní river valley, near La Melba close to Baracoa, 14. III. 1967 leg. et det. F. K., rev. L. Ryvar den 16. 1. 1976 (878666). – Same province, Mount Tetras de Santa Tereza near Baracoa, on dead trunk of the palm *Cocos nucifera*, 17. III. 1967 leg. et det. F. K., rev. L. Ryvar den 11. 1. 1976 (PRM 878678).

Trametes ectypus (Berk. et M. A. Curtis) Gilb. et Ryvar den

Syn.: *Coriolus ectypus* (Berk. et M. A. Curtis) Pat.

Carpophores semiresupinate with an avellaneous, very fine tomentose pileus surface, context pale woody coloured, pores whitish to ochraceous, small, 5–6 per mm.

Prov. Pinar del Rio, Sierra del Rosario Mountains, on dead trunk of a frondose tree, 3. II. 1967 leg. et det. F. K., rev. 1. 7. 1999 F. K. et Z. P. (PRM 887297).



Fig. 17. *Polyporus tricholoma* on a fallen twig of a frondose tree; Punto Escondido near Jibacoa, 21. 12. 1966.



Fig. 18. *Rigidoporus lineatus* on a rotten trunk of *Glyricidia sepium*; near Baracoa, 17. 3. 1967.

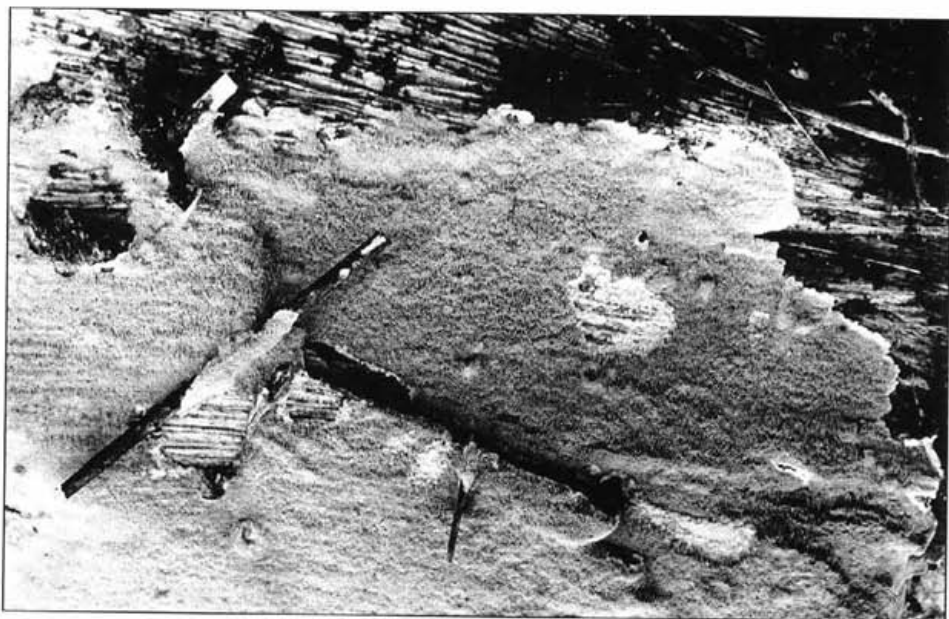


Fig. 19. *Rigidoporus vinctus* on a fallen branch of *Hura crepitans*; "finca" Guajaibon near Mariel, 23. 11. 1966.



Fig. 20. *Trametes villosa* on a fallen branch of *Spondias mombin* (view from above); Punto Escondido near Jibacoa, 21. 12. 1966.

Trametes cf. havannensis (Berk. et M. A. Curtis) Murrill

A small pileal (pileus c. 5 cm wide), sessile polypore with an ochraceous to nearly fulvous pileus surface. In Cuba, from which it was described in 1868, it is evidently rare.

Prov. Las Villas, Sierra del Escambray Mountains near the small town of Trinidad, Charco Azul, on dead trunk of a frondose tree, 4. I. 1967 leg. F. K., det. L. Ryvarden 10. 1. 1976 (PRM 870871).

Trametes hirsuta (Wulfen: Fr.) Pilát

Syn.: *Coriolus hirsutus* (Wulfen: Fr.) Quél.

Species, widely distributed in Europe, with a usually grey to cinereous, conspicuously hirsute pileus surface, occurring on plenty of hosts, mostly frondose, rarely also coniferous trees and shrubs; in Cuba it seems to be rather rare, observed on at least 3 hosts.

Prov. Pinar del Rio, Playa de Bailen near the small town of Pinar del Rio, on dead trunk of *Ceiba pentandra* on a pasture, 29. XI. 1966 leg. F. K., det. L. Ryvarden 16. 2. 1976 (PRM 878701). – Same province, Sierra del Rosario Mountains, Soroa near San Cristóbal, on stump of *Jambosa vulgaris*, 13. I. 1967 leg. F. K., det. L. Ryvarden 14. 1. 1976 (PRM 878667). – Prov. Camagüey, Sierra de Cubitas Mountains, near Banao close to the town of Camagüey, on dead trunk of *Trichia hirta*, 12. IV. 1967 leg. F. K., det. L. Ryvarden 10. 1. 1976 (PRM 878677).

Trametes maxima (Mont.) A. David et Rajchenb.

Syn.: *Cerrena maxima* (Mont.) L. Hansen

Polyporus labyrinthicus Mont.

A rather big, dimidiate *Trametes* (up to 20 cm wide) with a mostly cinereous to pale brown, villose-tomentose, concentrically furrowed pileus surface and often daedaleoid to irpiciform hymenophore. It was described from Cuba in 1837 as well as 1842 and it is not common there; it was observed there on at least 3 different hosts.

Prov. Pinar del Rio, Sierra del Rosario Mountains, Soroa near San Cristóbal, on stump, host not mentioned, 14. XI. 1964 leg. J. Komárek, det. Z. P. (PRM 895625). – Same province and locality, on dead trunk of a frondose tree, 12. I. 1967 leg. et det. F. K. (PRM 88732); same locality, host and collector, 14. I. 1967 (PRM 870877). – Prov. Matanzas, Jagüey Grande, *Citrus chinensis*, 10. XI. 1967 leg. C. Paulech, det. F. K. (PRM 885042). – Prov. Las Villas, Sierra del Escambray Mountains near the small town of Trinidad, Mataguá, on dead trunk of *Zanthoxylon cf. elephantiasis*, 4. I. 1967 leg. et det. F. K. (PRM 887265); same locality, host and collector, 6. I. 1967 (PRM 870899). – Same province, mountains and host, below Pico

Potreriillo, 5. I. 1967 leg. et det. F. K. (PRM 885)]. – Prov. Camagüey, Cabaniguan near Guáimaro, on dead branch of a frondose tree, 11. IV. 1967 leg. F. K., det. L. Ryvarden (PRM 887278). – Prov. Oriente, Gran Piedra near Santiago de Cuba, on dead trunk of a frondose tree, 20. III. 1967 leg. et det. F. K. (PRM 887257). – Same province, Guamá river valley, above El Sonador near Chirivico close to Santiago de Cuba, on dead trunk of a frondose tree, 23. III. 1967 leg. et det. F. K. (PRM 887358). – Same province, Gran Tierra near Maisí, on dead trunk of *Gliricidia sepium*, 18. III. 1967 leg. et det. F. K. (PRM 870876).

Trametes membranacea (Sw.: Fr.) Kreisel

Syn.: *Polyporus tenuis* Link ex Sacc.

Carpophores of this small species (pilei 1–2.5 cm wide) are sessile, dimidiate to conchate, extremely thin (only about 1 mm), when dried, pilei brittle and white to pallid, when young pileus surface very thin tomentose, then glabrous, furrowed, slightly zonate.

Prov. Pinar del Río, Sierra del Rosario Mountains, Soroa near San Cristóbal, on dead trunk of a frondose tree, 3. II. 1967 leg. et det. F. K., rev. 29. 6. 2000 F. K. et Z. P. (PRM 870866).

Trametes pusilla Lloyd

Carpophores dimidiate to semiresupinate, forming small, imbricate, whitish or pale ochraceous, slightly zonate and finely radially fibrillose pilei, which are only 0.6–2.5 cm broad; pores whitish to ochraceous, nearly round, small, 5–6 per mm. It is a species similar to *T. pubescens* (and according to Ryvarden identical) but differs in the small size of its carpophores and different distribution area – subtropical and tropical regions; probably a good species. In PRM there is only one collection from Cuba.

Prov. Oriente, Sierra de Nipe Mountains, under Mount Loma Mensura near Mayarí, c. 800 m alt., on dead branch of a frondose tree, 15. X. 1966 leg. V. Samek, det. L. Ryvarden 1976 (PRM 885158).

Trametes scabrosa (Pers.) G. Cunn.

Syn.: *Earliella corrugata* (Pers.) Murrill

Earliella cubensis Murrill

A species forming medium-sized, annual, laterally attached to semiresupinate carpophores with a remarkably rugose, zonate, at least partly dark reddish brown pileus surface. In Cuba it is one of the most abundant polypores (it was described from there from Herradura by Murrill in 1905), observed on at least 8 various hosts, mostly frondose trees.

Isla de Pinos (I. de la Juventud), N of Sta. Bárbara, on dead branch of *Ficus* sp., 22. XI. 1964 leg. J. Komárek, det. Z. P. (PRM 895624). – Same island, under Mount La Cañada near La Fé, on dead branch of *Mangifera indica*, 20. II. 1967 leg. et det. F. K. (PRM 870889). – Same island, San Juan near Sta. Fé, on dead trunk of *Bursera simaruba*, 28. II. 1967 leg. J. Ramón Cuevas, det. F. K. (PRM 887269). – Prov. Pinar del Rio, between La Fé and Cayuco near the small town of Pinar del Rio, on dead branch of *Quercus sagraeana*, 30. XI. 1966 leg. et det. F. K. (PRM 887283). – Same province, Los Palacios near Consolación del Sur, on dead trunk of *Ficus* cf. *benjamina*, 8. XII. 1966 leg. et det. F. K. (PRM 870909). – Same province, Sierra de los Organos Mountains, “mogotes” near Viñales close to the small town of Pinar del Rio, on dead fallen branch of a frondose tree, 3. IV. 1967 leg. et det. F. K. (PRM 887261). – Prov. La Habana, the “finca” Guajaibon near Mariel, on dead fallen trunk of *Bursera simaruba*, 23. XI. 1966 leg. et det. F. K. (PRM 887281). – Same province, city of Habana-Marianao, site called Laguito, in the garden of the Biological Institute of the Cuban Academy of Sciences, on dead branch of a frondose tree, 2. II. 1967 leg. et det. F. K. (PRM 885136). – Same province and city, bank of Almendares river, on felled trunk of *Ficus* cf. *benjamina*, 9. III. 1967 leg. et det. F. K. (PRM 871065). – Prov. Matanzas, Punto Escondido near Jibacoa, on dead fallen branch of *Bursera simaruba*, 21. XII. 1966 leg. et det. F. K., rev. L. Ryvarden 10. 1. 1976 (PRM 887338). – Same province, Arroyo Bermejo near Jibacoa, on dead trunk of *Bursera simaruba*, 1. I. 1967 leg. V. Samek, det. F. K., rev. L. Ryvarden 1976 (PRM 885045). – Prov. Las Villas, Sierra del Escambray Mountains near the small town of Trinidad, below Pico Potrerillo, on dead trunk of a frondose tree, 5. I. 1967 leg. F. K., det. L. Ryvarden 14. 1. 1976 (PRM 878660). – Same province, near San Blás close to the small town of Trinidad, on dead trunk of *Ficus* sp., 4. I. 1967 leg. et det. F. K., rev. L. Ryvarden 1976 (PRM 887323). – Prov. Oriente, Cuchillas de Toa Mountains, in the Jaguaní river valley, near La Melba close to Baracoa, on dead trunk of *Zanthoxylon* sp., 15. III. 1967 leg. et det. F. K., rev. L. Ryvarden 16. 1. 1976 (PRM 878703); same locality, on dead trunk of a frondose tree, 14. III. 1967 leg. et det. F. K. (PRM 887339). – Same province, Montecristo Mountains, near the village of Jamaica close to Guantánamo, on dead fallen trunk of *Pinus cubensis*, 19. III. 1967 leg. F. K., det. L. Ryvarden 8. 1. 1976 (PRM 887311). – Same province, between Cupeyal and Montecristo Mountains close to Guantánamo, c. 600 m alt., on rotten fallen branch of a frondose tree, X. 1966 leg. V. Samek, det. L. Ryvarden 10. 1. 1976 (PRM 887337).



Fig. 21. *Trametes villosa* on a fallen branch of *Spondias mombin*; (view from below); Punto Escondido near Jibacoa, 21. 12. 1966.

All photographs by F. Kotlaba

***Trametes versicolor* (L.: Fr.) Pilát**

Syn.: *Coriolus versicolor* (L.: Fr.) Quél.

This well-known polypore from the temperate zone with a variable colour of the pileus surface is in Cuban material rather avellaneous to brown. It seems to be a rare species in Cuba and the first author collected it there only once.

Prov. La Habana, city of Habana-Marianao, bank of the Almendares river, on dead branches of *Samanea saman*, 9. III. 1967 leg. F. K., det 12. 11. 1998 F. K. et Z. P. (PRM 870900).

***Trametes villosa* (Sw.: Fr.) Kreisel**

Syn.: *Coriolus pinsitus* (Fr.) Pat.

Polyporus sericeohirsutus Klotzsch

A rather small or medium-sized polypore with sessile, dimidiate or flabelliform pilei having a velvety-hirsute, pale cinereous, glistening surface and short, less than 1 mm long whitish tubes and regularly hexagonal pores, 2-3 per mm, which are whitish, but often becoming cinereous. An American species known from Florida

to Brazil, mostly under the name *Coriolus pinsitus*. It is rather common in Cuba and it is known there from at least 8 different hosts.

Isla de Pinos (I. de la Juventud), Sierra de Casas Mountains, virgin forest near J. Martí House, host not mentioned, 22. XI. 1964 leg. J. Komárek, det. Z. P. (PRM 895621). – Prov. Pinar del Río, La Fé near the small town of Pinar del Río, on dead branch of *Pinus tropicalis*, 30. XI. 1966 leg. F. K. et J. Ramón Cuevas, det. F. K. (PRM 887268). – Same province, Sierra de los Organos Mountains, “mogotes” near Viñales close to the town of Pinar del Río, on dead branch of *Erythroxylon havanensis*, 3. IV. 1967 leg. et det. F. K. (PRM 887318). – Same province and mountains, near the hotel Los Jazmines close to Viñales, on dead fallen branch of *Quercus sagraeana*, 9. XII. 1966 leg. et det. F. K. (PRM 887368). – Same province, Sierra del Rosario Mountains, Cajálbana near La Mulata, on dead twig of *Brya ebenus*, 25. XI. 1966 leg. J. Ramón Cuevas et F. K., det. F. K. (PRM 887335). – Same province and mountains, Soroa near San Cristóbal, on wood (PRM 895619) and on fallen branches (PRM 895620), hosts not mentioned, both 14. XI. 1964 leg. J. Komárek, det. Z. P. – Same locality, on fallen dead branch of *Jambosa vulgaris*, 13. I. 1967 leg. et det. F. K. (PRM 887314). – Prov. La Habana, at a site called Jamaica near the city of Habana, on dead trunk of a frondose tree, 31. I. 1967 leg. et det. F. K. (PRM 887308). – Same province, city of Habana-Marianao, site called Laguito, in the garden of the Biological Institute of the Cuban Academy of Sciences, on dead branch of a frondose tree, 31. I. 1967 leg. et det. F. K. (PRM 887267). – Prov. Matanzas, Punto Escondido near Jibacoa, on dead twig of a frondose tree or shrub, 20. XI. 1966 leg. et det. F. K. (PRM 887362, 870872); same locality, on dead fallen branch of *Spondias mombin*, 21. XII. 1966 leg. et det. F. K. (PRM 870880); same locality and host, 21. XII. 1966 leg. J. Ramón Cuevas et F. K., det. F. K. (PRM 870893). – Same province, Arroyo Bermejo near Jibacoa, on dead branch of *Citrus limonum*, 31. XII. 1966 leg. V. Samek et F. K., det. F. K. (PRM 887362); same locality and date, on dead trunk of a frondose tree, leg. F. K., det. L. Ryvar den 11. I. 1976 (PRM 878665 – young specimens). – Prov. Las Villas, “sabana” near Manacas close to Santa Clara, on dead branch of *Cameraria retusa*, 9. II. 1967 leg. et det. F. K. (PRM 887341). – Same province, Sierra del Escambray Mountains near the small town of Trinidad, below Pico Potrerillo, on dead branch of a frondose tree, 5. I. 1967 leg. F. K., det. L. Ryvar den 16. I. 1976 (PRM 878654). – Prov. Oriente, Gran Tierra near Maysí, on dead trunk of *Coffea arabica*, 18. III. 1967 leg. et det. F. K. (PRM 887256).

Trichaptum abietinum (Dicks.: Fr.) RyvardenSyn.: *Hirschioporus abietinus* (Dicks.: Fr.) Donk

Well-known and common polypore in Europe, forming usually effuso-reflexed or resupinate, thin carpophores with regularly orbicular, shallow pores. It seems to be a rather rare species in Cuba, observed solely on pines.

Isla de Pinos (I. de la Juventud), "sabana" near Sta. Bárbara, on dead branch of *Pinus caribaea*, 21. II. 1967 leg. et det. F. K. (PRM 887289). – Prov. Pinar del Rio, c. 6 km S of Dimas near Mantua, on fallen dead branch of *Pinus tropicalis*, 1. XII. 1966 leg. et det. F. K. (PRM 888174). – Same province, Sierra del Rosario Mountains, Cajálbana near La Mulata, on dead branches of *Pinus caribaea*, 5. IV. 1967 leg. et det. F. K. (PRM 887366, 870874).

Trichaptum byssogenum (Jungh.) RyvardenSyn.: *Trametes versatilis* Berk.*Trichaptum versatile* (Berk.) G. Cunn.

Only slightly similar to the previous species, differing chiefly in very dense, whitish, pale ochre to brownish hairs covering the pileus surface and round, daedaleoid to sublamellate pores. Most probably not a rare polypore in Cuba, occurring on conifers as well as frondose trees; it was recorded there from at least 4 different hosts.

Prov. Pinar del Rio, La Fé near the small town of Pinar del Rio, on a dead branch of *Pinus tropicalis*, 30. XI. 1966 leg. F. K. et J. Ramón Cuevas, det. F. K., rev. 2. 9. 1993 F. K. et Z. P. (PRM 878670). – Same province, Sierra del Rosario Mountains, Cajálbana near La Mulata, on dead fallen branch of *Pinus caribaea*, 24. XI. 1966 leg. F. K., det. O. Fidalgo (PRM 870881). – Same province, Bahía Honda near Mariel, on dead branch of *Rhizophora mangle*, 7. XII. 1966 leg. F. K., det. L. Ryvarden 10. 1. 1976 (PRM 878686). – Prov. Camagüey, Sierra del Cubitas Mountains, on stump of cf. *Poepigia procera*, 12. IV. 1967 leg. et det. F. K. (PRM 870864).

Trichaptum sector (Ehrenb.: Fr.) KreiselSyn.: *Polystictus nebularis* Cooke

Another American polypore forming small, thin, imbricate, flabelliform pilei with a multizonate, silky, avellaneous or isabelline surface and regular, dentate, avellaneous to fuliginous pores, 2–6 per mm. It appears to be a rare species in Cuba, occurring on conifers as well as frondose trees.

Prov. Pinar del Rio, Sierra del Rosario Mountains, Cajálbana near La Mulata, on dead fallen trunk of the palm *Coccothrinax yuraguana*, 25. XI. 1966 leg. et det. F. K. (PRM 887332). – Prov. Oriente, Sierra Maestra Mountains, La Uvita, c. 1000 m alt., on dead trunk of *Pinus cubensis*, 4. VIII. 1965 leg. V. Samek, det. F. K. (PRM 887346).

REFERENCES

- BONDARTSEVA M. A. (1983): Klyuts dlya opredeleniya rodov trutovykh gribov Kuby (Polyporaceae s. lato) (Key to the genera of Cuban polypores (Polyporaceae s. lato)). – Mikol. i Fitopat. 17: 13–21.
- BONDARTSEVA M. A. and HERRERA S. (1979a): Afilloforovye griby Kuby. I. Sem. Polyporaceae Cda. (Aphylophorales insulae Cuba. I. Fam. Polyporaceae Cda). – Nov. Sist. Nizsh. Rast. 16: 42–66.
- BONDARTSEVA M. A. and HERRERA S. (1979b): Afilloforovye griby Kuby. II. Sem. Ganodermataceae Donk (Aphylophorales insulae Cuba. II. Fam. Ganodermataceae Donk). – Nov. Sist. Nizsh. Rast. 16: 66–71.
- BONDARTSEVA A. M. and HERRERA S. (1980a): Sistematicheskoe polozhenie i sistema roda Phellinus Quél. (The taxonomic position and system of the genus Phellinus Quél.). – Mikol. i Fitopat. 14: 3–9.
- BONDARTSEVA A. M. and HERRERA S. (1980b): Novye vidy roda Phellinus Quél. (Hymenochaetaeaceae) s Kuby (New species of the genus Phellinus Quél. (Hymenochaetaeaceae) from Cuba). – Mikol. i Fitopat. 14: 476–480.
- BONDARTSEVA A. M. and HERRERA S. (1981a): Rod Corioloopsis Murr. na Kube (The genus Corioloopsis Murr. in Cuba). – Mikol. i Fitopat. 15: 368–372.
- BONDARTSEVA A. M. and HERRERA S. (1981b): Afilloforovye griby Kuby. III. Sem. Hymenochaetaeaceae Donk (Aphylophorales insulae Cuba. III. Fam. Hymenochaetaeaceae Donk). – Nov. Sist. Nizsh. Rast. 18: 62–74.
- BONDARTSEVA A. M. and HERRERA S. (1984a): Trutovye griby (Polyporaceae s. str.) Kuby (Polypores (Polyporaceae s. str.) of Cuba). – Nov. Sist. Nizsh. Rast. 21: 66–84.
- BONDARTSEVA A. M. and HERRERA S. (1984b): Trutovye griby, novye i maloizvestnyye dlja Kuby (Polypores new or less known for Cuba). – Nov. Sist. Nizsh. Rast. 21: 84–87.
- BONDARTSEVA A. M. and HERRERA S. (1986): Afilloforovye griby Kuby. IV. Sem. Hymenochaetaeaceae Donk (Aphylophorales insulae Cuba. IV. Fam. Hymenochaetaeaceae Donk). – Nov. Sist. Nizsh. Rast. 23: 113–117.
- BONDARTSEVA A. M. and HERRERA S. (1988): Afilloforovye griby Kuby. V. Rody Hymenochaete Lév. i Hydnochaete Bres. (Hymenochaetaeaceae) (Aphylophorales insulae Cuba. V. Genera Hymenochaete Lév. et Hydnochaete Bres. (Hymenochaetaeaceae)). – Nov. Sist. Nizsh. Rast. 25: 67–81.
- BONDARTSEVA A. M. and HERRERA S. (1989): Rod Navisporus Ryv. na Kube (The genus Navisporus Ryv. in Cuba). – Mikol. i Fitopat. 23: 193–197.
- BONDARTSEVA A. M. and HERRERA S. (1991): Trutovye griby (Polyporaceae, Hymenochaetaeaceae) novye i redkie dlya Kuby (Bracketed fungi (Polyporaceae, Hymenochaetaeaceae) new and rare to Cuba). – Mikol. i Fitopat. 25: 94–99.
- BONDARTSEVA A. M., HERRERA S., SANDOVAL D. and CHERKAS F. (1992): Problemy taksonomii gimenochetovych gribov Kuby (Taxonomical problems of the Cuban hymenochaetaceous fungi). – Mikol. i Fitopat. 26: 3–14.
- GILBERTSON R. L. and RYVARDEN L. (1986, 1987): North American polypores, Vol. 1: 1–433, Vol. 2: 434–885, Oslo.
- HERRERA S. and BONDARTSEVA M. A. (1982): Especies del género Phellinus (Basidiomycetes: Hymenochaetaeaceae) nuevas o poco conocidas en Cuba. – Acta Bot. Cub. no. 8: 1–17.
- HERRERA FIGUEROA S. and BONDARTSEVA M. A. (1985): Especies del género Phellinus (Basidiomycetes: Hymenochaetaeaceae) nuevas o poco conocidas en Cuba (II). – Acta Bot. Cub. no. 36: 1–18.
- KOTLABA F. (1983): Několik pozoruhodných druhů dřevních hub z Kuby (Some remarkable species of wood-inhabiting fungi from Cuba). – Živa 31: 206–207.
- KOTLABA F., POUZAR Z. and RYVARDEN L. (1984): Some polypores, rare or new for Cuba. – Čes. Mykol. 38: 137–145, tab. 7–12.
- KREISEL H. (1970a): Mykologische Eindrücke von Kuba. – Mykol. Mitt.-Blatt 14: 73–80.

- KREISEL H. (1970b): El papel de los hongos en la vegetación forestal de Cuba. – Bol. Soc. Mex. Micol. 4: 39–43.
- KREISEL H. (1971): Charakteristika der Pilzflora Kubas. – Biol. Rundschau 9: 65–73.
- LARSEN M. J. and COBB-POULLE L. A. (1990): *Phellinus* (Hymenochaetaceae). A survey of the world taxa. – Synopsis fung. 3: 1–206, Oslo.
- MURRILL W. A. (1907, 1908): (Agaricales) Polyporaceae. – North American flora 9, Part 1: 1–72, Part 2: 73–131, New York.
- POUZAR Z. (2003): New polypore from Cuba: *Junghuhnia kotlabae*. – Czech Mycol. 55: 1–6.
- RYVARDEN L. and JOHANSEN I. (1980): A preliminary polypore flora of East Africa. – 636 p., Oslo.
- VAMPOLA P., KOTLABA F. and POUZAR Z. (1994): *Antrodia pini-cubensis*, a new polypore from the Caribbean area. – Czech Mycol. 47: 189–192.