

17. MESOZOIC RADIOLARIA IN THE ATLANTIC OCEAN OFF THE NORTHWEST COAST OF AFRICA, DEEP SEA DRILLING PROJECT, LEG 41

Helen P. Foreman, Oberlin College, Oberlin, Ohio

ABSTRACT

Radiolaria from Hole 367 (Neocomian/Late Jurassic) and Hole 396A (Late Cretaceous) are described and their occurrences and abundances tabulated. Previously established ranges for some of the taxa are refined, and from Hole 369A, six new species and two new subspecies are described.

TABLE OF CONTENTS

Abstract	739
Introduction	739
Presentation of Results	739
Zonation	740
Phylogeny	740
Radiolaria from Each Site	740
Hole 367 with Table 1	740
Hole 368	742
Hole 369A with Table 2	742
Systematic Section	742
<i>Spumellaria</i>	742
Family <i>Actinommidae</i>	742
Subfamily <i>Saturnalinae</i>	744
Family <i>Phacodiscidae</i>	744
Family <i>Phaseliformidae</i>	744
Family <i>Pseudoaulophacidae</i>	744
Family <i>Spongodiscidae</i>	744
Family <i>Sponguridae</i>	745
<i>Nassellaria</i>	745
Family <i>Amphipyndacidae</i>	745
Family <i>Artostrobiidae</i>	745
Family <i>Parvicingulidae</i>	746
Family <i>Theoperidae</i>	746
Subfamily <i>Syringocapsinae</i>	748
Radiolaria of Uncertain Affinities	749
Acknowledgments	750
References	750

INTRODUCTION

Radiolaria of Mesozoic age have been investigated from two of the five sites that were drilled on Leg 41. Their positions are as follows: Site 367, Cape Verde Basin, 12°29.2'N, 20°02.8'W at a water depth of 4748 meters; Site 369, continental slope off the Spanish Sahara, 26°35.5'N, 14°59.9'W. Mesozoic Radiolaria at Site 367 are Neocomian/Late Jurassic in age and at Site 369 Maestrichtian/Campanian.

Although Holes 368 and 370 sampled Cretaceous sediments, Radiolaria, when present, were so rare or poorly preserved that no systematic investigation of samples was made from these two holes. In Hole 366 scrapings from the core catcher of the lowest Core 55

were considered to be Cretaceous (Maestrichtian). No sample was available and the shipboard scientists do not mention finding Radiolaria in it.

PRESENTATION OF RESULTS

For the Mesozoic sequences in Hole 367, Cores 29-37 (Table 1), and Hole 369A, Cores 35-39 (Table 2) radiolarian occurrences and abundances have been tabulated and the Radiolaria arranged in stratigraphic order as far as it was possible. The poor preservation in Hole 367 and the paucity and short sequence in Hole 369A limit somewhat the usefulness of this arrangement. Therefore, for Hole 367 when outside evidence indicates a longer range than the one presented in this material, an arrow indicates the direction of the more extended range. For Hole 369A additional outside evidence has been used in arranging the sequence of species. Here too, arrows indicate outside evidence for more extended ranges than those suggested by the table.

Letters and footnotes to the tables are defined as follows:

G	Good
M	Moderate
P	Poor
—	Looked for but not found
+	Two specimens
•	One specimen
△	Porcellanite
A	Abundant
C	Common
F	Few
R	Rare
VR	Very rare
P	Present, but recognized with such difficulty that no estimate of abundance could be made.
?	Uncertain identification
a	Without the complete spine it is not possible to distinguish these two species when they co-occur and a (?) indicates this uncertainty.
b	Absences are not noted because they may be due to poor preservation.
c	Age assignments are made according to information provided by nannofossils and foraminifers recorded elsewhere in this volume.

TABLE 2
Occurrence and Abundance of Campanian/Maestrichtian Radiolaria of Hole 369A

Age ^c	Sample (Interval in cm)	Taxa																																																				
		Abundance	Preservation	<i>Amphipyndax stocki</i>	<i>Stichomitra asymbatos</i> group	<i>Archeospongoprimum</i> spp.	<i>Spongosaturnalis hueyi</i>	<i>Phaseliforma</i> spp.	<i>Dicystomitra duodecimcostata duodecimcostata</i>	<i>Theocampe salillum</i>	<i>Triactinosphaera morenoensis</i>	<i>Lithomelissa (?) heros</i>	<i>Stichopillidium teslaense</i>	<i>Theocampe altamontensis</i>	<i>Cromyodruppa concentrica</i>	<i>Pseudaulophacis parguarensis</i>	<i>Lithostrobos punctulatus</i>	<i>Amphipyndax enesseffi</i>	<i>Cinclopyramis sanjoaquinensis</i>	<i>Clathropyrgus tithium</i>	<i>Theocampe apicata</i>	<i>Rhopalocyngium sparnon</i>	<i>Dictyomitra koslowae</i>	<i>Dicystomitra lamellicostata</i>	<i>Theocapsomma comys</i> group	<i>Theocampe daseta</i>	<i>Afens liriodes</i>	<i>Stichomitra asymmetrica</i>	<i>Theocampe laspa</i>	<i>Amphipyndax tylotus</i>	<i>Theocampe basillis</i>	<i>Acidnomelos proapieron</i>	<i>Stichomitra manifesta</i>	Hagiastrii cf. <i>Staurolonchidium tuberosum</i>	<i>Ellipsoxiphus privus</i>	<i>Lithostrobos litus</i>	<i>Rhopalocyngium colpodes</i>	<i>Myllocercion</i> spp.	<i>Ellipsoxiphus hastatus</i>	<i>Stichomitra compsa</i>	<i>Dicystomitra</i> sp. cf. <i>Diplostrobos crassispina</i>	<i>Lithomelissa (?) hoplites</i>	<i>Amphipyndax ploussios</i>	<i>Lithostrobos</i> sp. aff. <i>L. rostovzevi</i>	<i>Lophosphaera (?) polycyrtis</i>	<i>Ellipsoxiphus pusilla</i>	<i>Alievium</i> sp. A	<i>Alievium</i> sp. B	<i>Dictyomitra andersoni</i>	<i>Theocapsomma teren</i>	<i>Cyrtocalpis</i> sp. aff. <i>C. operosa</i>	<i>Theocapsomma</i> sp. aff. <i>T. comys</i> .		
Late Maestrichtian	35, CC	R	G	C	C	+	+	-	•	R	•	R	A	-	-	-	-	•	-	-	F	-	R	R	C	-	R	+	C	R	-	+	R	+	R	-	-	+	C	C	+	R	-	+	-	•	-	R	•	•				
	36-3, 25-27	VR	G	R	C	+	•	-	-	•	-	R	F	-	-	-	-	•	-	-	F	-	R	+	C	•	R	-	A	+	-	-	•	F	R	•	-	-	•	C	C	R	-	R	R	-	R	•	•					
Middle Maestrichtian	36-5, 65-67	VR	G	R	C	•	•	-	-	-	-	-	F	-	-	-	-	•	-	•	F	-	R	+	F	-	F	-	C	-	-	-	-	•	R	+	-	-	•	C	C	R	-	R	+	-	•	+	R	F	•			
	36, CC	R	G	R	C	F	•	-	-	+	-	•	R	-	-	-	-	-	-	•	?	-	R	+	F	-	C	-	C	R	-	+	F	R	•	+	R	•	+	R	R	•	R	-	R	•	•	•	R	R	•			
	37-1, 141-143	R	G	R	C	R	•	-	-	R	-	R	-	-	-	-	-	-	-	R	•	-	+	R	C	•	C	•	C	C	-	R	+	R	•	•	•	•	•	•	•	•	•	•	•	•	•	•	•	•	•	•		
Early Maestrichtian/Late Campanian	37-4, 65-69	R	G	R	F	F	-	-	+	R	R	-	F	-	-	-	-	-	-	R	R	-	R	•	-	•	F	•	C	+	-	+	+	F	F	F	-	•	•	•	•	•	•	•	•	•	•	•	•	•	•			
	37, CC	R	G	R	F	F	-	-	F	R	-	•	F	-	-	-	-	-	-	R	R	-	F	R	+	-	R	-	C	-	-	+	F	•	-	-	+	R	-	•	-	F	-	-	•	?	-	-	-	-				
	38-2, 65-67	R	G	R	F	F	-	-	•	-	-	•	R	-	-	-	-	-	-	•	•	•	•	•	•	•	•	•	C	-	-	•	+	F	-	-	•	•	•	•	•	•	•	•	•	•	•	•	•	•	•	•		
	38, CC	R	G	R	C	+	R	•	+	R	R	-	+	+	+	F	-	F	-	R	R	F	F	R	R	R	R	-	C	R	F	-	R	R	-	-	F	R	•	•	•	•	•	•	•	•	•	•	•	•	•	•		
Campanian	39-3, 67-70	R	G	F	C	+	-	-	•	-	F	•	+	+	+	F	+	R	•	R	+	R	F	R	F	R	F	-	F	F	R	-	R	R	•	•	•	•	•	•	•	•	•	•	•	•	•	•	•	•	•	•	•	•
Campanian	39, CC	R	G	R	C	+	↓	•	R	↓	↓	F	•	+	•	+	+	+	+	R	+	•	F	F	+	C	↓	↓	↓	F	+	+	+	+	+	+	+	+	+	+	+	+	+	+	+	+	+	+	+	+	+	+	+	+

Note: Footnotes and symbols are defined under the paragraph "Presentation of Results."

108 cm (C, P); Δ-35-2, 28-31 cm (C, P, and VR, M); 35-2, 42-44 cm (C, P-M); 36-2, 20-22 cm (VR, P); Δ-36-3, 49-51 cm (C, P); 37-1, 32-34 cm (VR, VP); Δ-37-1, 34-37 cm (F, P); Δ-37-1, 80-82 cm (C, P-M); Δ-37-1, 147-149 cm (C, P); 37, CC (VR, VP).

The pyritized Radiolaria were generally too poor to attempt any age assignments except for 26, CC which on the basis of the presence of *Lithocampe elegantissima* and the general aspect of the fauna might be considered Albian/Aptian and 28-2, 44-45 cm which on the basis of the presence of a member of the *Sphaerostylus lanceola* group and the general aspect of the fauna might be considered Neocomian. Siliceous Radiolaria from Cores 29-32 are too poor, or too sparse to indicate anything but a broad Neocomian-Late Jurassic age. An exception is Sample 367-29-2, 26-27 cm which containing *Sethocapsa cetia* and *S. trachyostraca* is considered to be low in the *Sethocapsa trachyostraca* Zone. Samples from Cores 34-37 contained more abundant, slightly better preserved Radiolaria, but because Radiolaria in the Late Jurassic are not well enough known, the age assignments based on foraminiferal and nannofossil data are used on the occurrence table.

Hole 368

In the Paleogene where the soft sediments were barren, porcellanite samples yielded common, poor to moderately well preserved Radiolaria. In the Cretaceous sequence only Core 55 contained a layer of porcellanite. That sample, 55-2, 8-10 cm, yielded common, poorly preserved Radiolaria, Campanian-Coniacian (probably Campanian in age.) With the shipboard scientists noting only very rare, poor Radiolaria from this sequence, only two soft sediment samples near the bottom of the hole were examined, 60-1, 139-141 cm, and 62-3, 1-3 cm; both were barren.

Hole 369A With Table 2

Late Cretaceous Radiolaria were found in the unconsolidated sediments of Hole 369A from 35, CC to 39, CC. They are rare to very rare, with good preservation in all 27 samples examined except 37-1, 95-97 cm (VR, M) and 39-3, 62-64 cm (R, M). Two samples of porcellanite yielded Radiolaria as follows: 39-2, 102-104 cm (VR, P) and 39-3, 21-23 cm (VR, G). No Radiolaria were found in 40-2, 45-47 cm, and none were reported by the shipboard paleontologists in the remaining Cores 41 through 47.

This Maestrichtian-Campanian radiolarian sequence is assigned according to foraminiferal and nannofossil data as follows: Sample 35, CC, late Maestrichtian; Core 36, middle Maestrichtian; Cores 37 and 38, early Maestrichtian-late Campanian and Core 39, Campanian.

Some members of the late Maestrichtian fauna described from California are well represented in Samples 36-3, 25-27 through 37-1, 141-143, and 38, CC through 39-1, 75-77. Samples 35, CC through 36-2, 65-67; 37-2, 85-87 through 38-5, 55-57; and 39-2, 75-77 through 39, CC, however, show a distinct boreal influence with many fine spongy discoidal forms similar to those described by Lipman (1952) from the Russian

plateau and (1960) from western Siberia (Plate 2, Figures 18-21). The presence of the boreal fauna is most marked in Samples 35, CC and 37-6, 45-47 through 38-2, 65-67. Because of this, it is not yet possible to confidently determine the base or the top of a species range in this sequence when that top or base would fall in the part of the column where its absence might be due to temperature changes. The sparseness of the fauna also contributes to uncertainty. However, because preservation was good and individual species could easily be recognized, it was possible to extend upward the ranges of a number of taxa that had heretofore only been reported in strata as young as the Campanian and downward, species that had only been reported from the late Maestrichtian.

SYSTEMATIC SECTION

Constraints of time for this Initial Report do not allow a detailed investigation into the family relationships of all the species presented here. Therefore many species have been assigned to families based on the broad definitions of Riedel (1967a, b) or left unassigned as with the group of nassellarians with large cephalic (Radiolaria of uncertain affinities.)

SPUMELLARIA Ehrenberg, 1875

Family ACTINOMMIDAE Haeckel, 1862; emend. Riedel, 1967b

Genus CROMYODRUPPA Haeckel

Cromyodruppa Haeckel, 1887, p. 317. Type species (subsequent designation by Campbell, 1954, p. D70) *Cromyodruppa cepa* Haeckel, 1887, p. 317.

Remarks: It is not likely that the species described by Lipman (1952) or those described by Kozlova and Gorbovetz (1966) are related to the type species *C. cepa* of this genus. The assignment remains unchanged as a convenience until a more appropriate generic assignment can be made.

Cromyodruppa (?) *concentrica* Lipman (Plate 2, Figure 18)

Cromyodruppa concentrica Lipman in Kozlova and Gorbovetz, 1966, p. 62, pl. 1, fig. 1-4.

Genus ELLIPSOXIPHUS Dunikowski

Ellipsoxiphus Dunikowski, 1882, p. 185. Type species (subsequent designation by Campbell, 1954, p. D69) *Ellipsoxiphus parvo-foraminosus* (Dunikowski) = *Xiphosphaera parvo-foraminosa* Dunikowski, 1882, p. 186, pl. 5, fig. 51.

Remarks: It is not likely that the species described below are closely related to the type species of *Ellipsoxiphus*. However, the name is used here as a temporary expedient until the relationship of these Late Cretaceous forms to early Cenozoic forms is more clearly understood.

Ellipsoxiphus hastatus (Campbell) (Plate 2, Figure 13)

Sphaerostylus sphaerostylantha hastatus Campbell in Campbell and Clark, 1944, p. 5, pl. 1, fig. 1, 6.

Description: This form consists of two shells, an outer spherical or almost spherical shell with two opposing, unequal three-bladed polar spines, and a small spherical inner shell. When the outer shell is very slightly ellipsoidal the long axis is commonly in the plane perpendicular to the polar spines (transverse). Pores are fairly uniform in size, circular to subcircular, set in angular frames which in almost all cases roughen the surface by forming blunt nodes at their junctions.

Measurements (based on 13 specimens from Hole 369A, Cores 37-39.) Transverse width of outer shell 95-125 μm, vertical width 95-110 μm; transverse width of one inner shell 22 μm; length of spines 40-185 μm.

Remarks: Of the specimens examined in this material and the one specimen observed in a small sample of topotypic material, only one, in Sample 369A-39, CC, has a small inner shell. No radial beams were seen in the specimens which lacked a shell. Specimens from the older samples tend to be less robust with weaker polar spines.

Ellipsoxiphus privus Foreman, new species
(Plate 2, Figures 14-16)

Stylatractus (?) sp. Kozlova in Petrushevskaya and Kozlova, 1972, pl. 4, fig. 3, 4.

Ellipsoxiphus sp. A Foreman, in press, fig. 6, p. 11, pl. 1, fig. 4.

Ellipsoxiphus sp. B Foreman, in press, fig. 6, p. 11, pl. 1, fig. 5.

Description: The outer shell is ellipsoidal with subcircular pores, varying considerably in size. The surface may be fairly smooth or roughened by raised areas at the junction of the pore frames. These raised areas sometimes develop as short by-spines. Three inner shells (sometimes two?) are ellipsoidal to circular. The largest of the inner shells has approximately equal, rounded pores in angular pore frames. They are connected by the stout, bladed primary radial beam extensions of the two opposing polar spines and a few secondary radial beams. The polar spines are unequal in length and generally three-bladed partly or throughout their length. Rare specimens with almost entirely smooth spines are also included.

Measurements (based on 15 specimens from Hole 369A, Cores 35, 37-39): length of ellipsoid 95-150 μm ; width of ellipsoid 70-115 μm .

Remarks: This species is relatively common throughout the Maestrichtian-Campanian sequence of Hole 369A. In Foreman (in press) it was considered that this form could usefully be divided into two species, *E. sp. A* and *E. sp. B* on the basis of size. Further investigation, however, shows this distinction to be artificial and difficult to apply; thus all forms are here considered to belong to one species regardless of size. Larger specimens are more commonly present in Cores 38 and 39.

In comparative material from CAS loc. 39545 (Foreman, 1968) the outer shell is variably developed, and in rare cases missing entirely. When it is missing, a slight change in contour on the two main spines may be noted at the approximate point where the outer shell, if present, would intersect the spines. In this exceptionally well-developed material the spine tips sometimes are developed with one main point, and two very slightly developed minor points.

Etymology: The specific name is from the Latin adjective *privus*, simple.

Ellipsoxiphus pusilla (Campbell)
(Plate 2, Figures 9, 10, 17)

Stylosphaera (Stylosphaerella) pusilla Campbell in Campbell and Clark, 1944, p. 5, pl. 1, fig. 2, 4, 5.

Druppactratona sp. A in Foreman, in press, pl. 1, fig. 3.

Description: This form consists of two shells and two opposed polar spines of unequal length. The outer shell may be spherical or ellipsoidal with the long axis (vertical width) in the plane of the polar spines. Subcircular pores are fairly uniform in size on individual specimens but vary considerably in size among them, from moderate as on the illustration (Plate 2, Figure 9) to very small (Plate 2, Figure 17). They are generally set in angular pore frames. When these are well developed, the surface is roughened by blunt raised areas, or sometimes sharp thorns at the junction of the frames. When they are missing or only weakly developed, the shell is smooth. The inner shell is subspherical in form with an uneven surface due to the pore frames forming an angular bulged surface at the points where the slender secondary radial beams, which connect the inner shell to the outer shell, protrude. Although they were searched for, no heavier primary radial beams extending directly from the inner shell to the polar spines of the outer shell could be distinguished. The polar spines may be three-bladed or smooth and are sometimes slightly tipped so that they do not extend in an exact straight line with each other.

Measurements (based on 25 specimens from UCMP loc. A2615, CAS loc. 39545, Moreno Gulch [Foreman, 1968] and Hole 369A, Cores 36-38.) Transverse width of outer shell 60-90 μm (majority 70-80 μm), vertical width of outer shell 70-100 μm , transverse width of inner shell 20-30 μm ; length of short polar spine 50-70 μm , of long polar spine 75-110 μm .

Remarks: This species is described more broadly than by Campbell and includes forms with smooth and thorny shells, and spines, which may be bladed or smooth.

Genus SPHAEROSTYLUS Haeckel

Sphaerostylus Haeckel, 1881, p. 451; Foreman, 1973, p. 258.

Pantanellium Pessagno, in press.

Remarks: We continue to use the generic name *Sphaerostylus* Haeckel because the type species (by subsequent monotypy) *Sphaerostylus zittelii* Rüst, from the coproliths of Ilsede (Upper Lias or Lower Dogger), although poorly illustrated and only briefly described, clearly has the features, i.e., two opposite bladed polar spines, and two shells, the outer with exceptionally large pores, which are present in the species assigned here. Thus *Pantanellium* Pessagno, type species *P. riedeli* Pessagno, is considered a subjective synonym.

Sphaerostylus lanceola (Parona) group
(Plate 1, Figure 10)

Sphaerostylus lanceola (Parona) group in Foreman, 1973, p. 258, pl. 1, fig. 7-11; 1975, p. 609, pl. 2E, fig. 2-6.

Pantanellium fischeri (Pessagno), in press.

Pantanellium riedeli Pessagno, in press.

Remarks: The variable forms in the synonymy above continue to be grouped together, because of the difficulty of making fine distinctions on poorly preserved specimens. An exception is the ancestral form of *Sphaerostylus lanceola* illustrated by Riedel and Sanfilippo (1974) whose large, broad, robust spines and relatively small elliptical shell are easily recognized even in poor material. The name *S. lanceola* (Parona) continues to be used because that form has priority and its illustration and clear description agree very well with some of the forms that have been observed.

In well-preserved material the distinctions made by Pessagno, in describing *Pantanellium fischeri*, can be applied more easily.

Ancestral Sphaerostylus lanceola
(Plate 1, Figure 11)

Form ancestral to *Sphaerostylus lanceola* (Parona) Riedel and Sanfilippo, 1974, p. 780, pl. 1, fig. 4, 5; pl. 12, fig. 1.

Remarks: See "Remarks" under *Sphaerostylus lanceola* (Parona) group.

Genus TRIACTOMA Rüst

Triactoma Rüst, 1885, p. 289; Loeblich and Tappan, 1961, p. 244; Foreman, 1973, p. 259.

Remarks: The type species of *Triactoma* is *T. tithonianum* Rüst, 1885, p. 289, pl. 28, fig. 5, described as a spherical form but observed as a slightly flattened sphere, elliptical in cross-section. Therefore it cannot, as suggested by Pessagno (in press), be considered a subjective synonym of *Tripocyclia* Haeckel, 1881, whose type species, by subsequent monotypy, *T. trigonum* Rüst, 1885, p. 293, pl. 3, fig. 3 is described and illustrated as a triangular discoidal form.

Triactoma blakei (Pessagno)
(Plate 1, Figure 15)

Tripocyclia blakei Pessagno, in press, pl. 6, fig. 15, 16.

[?] *Triactoma pachyacantha* Rüst, 1885, p. 289, pl. 28, fig. 6.

Remarks: *T. pachyacantha* Rüst is only doubtfully included in the synonymy because its illustration shows one odd spine. The other described features, i.e., shape, diameter, and length of spines, agree very well.

Triactoma jonesi (Pessagno)
(Plate 1, Figures 13, 14)

Tripocyclia jonesi Pessagno, in press, pl. 7, fig. 1-5.

Remarks: Most of the forms which might be identified as belonging to this species had spines broken off. When the spines are incomplete it is not possible to distinguish confidently this form from *T. tithonianum* which has a similarly shaped shell, in the same size range and differs only in having spines terminating in simple points. Because of this uncertainty, neither *T. jonesi* or *T. tithonianum* have been tabulated. The few forms with one complete spine that could be identified as *T. jonesi* had somewhat larger diameters (175-250 μm) than those measured by Pessagno.

Triactoma tithonianum Rüst

Triactoma tithonianum Rüst, 1885, p. 289, pl. 28, fig. 5; Foreman, 1973, p. 260, pl. 2, fig. 1; 1975, p. 610, pl. 3, fig. 13.

Remarks: See "Remarks" under *T. jonesi*.

Subfamily SATURNALINAE Deflandre, 1953

Genus ACANTHOCIRCUS Squinabol

Acanthocircus Squinabol, 1903, p. 124; Foreman, 1973, p. 260.*Acanthocircus dicranacanthos* (Squinabol)

(Plate 1, Figure 7)

Saturnalis dicranacanthos Squinabol, 1914, p. 289, fig. 1; pl. 22, fig. 4-7; pl. 23, fig. 8.*Acanthocircus dicranacanthos* (Squinabol) in Foreman, 1975, p. 610, pl. 20, fig. 5, 6.*Acanthocircus trizonalis* (Rüst) (?) emend.

(Plate 1, Figure 9)

Acanthocircus trizonalis (Rüst) in Foreman, 1973, p. 610, pl. 20, fig. 1-4.**Remarks:** This species is present in the oldest sample bearing radiolarians and thus arose at the very latest in the Kimmeridgian, perhaps earlier.*Acanthocircus* sp. cf. *Spongosaturnalis* (?) *suboblongus* Yao

(Plate 1, Figure 8)

cf. *Spongosaturnalis* (?) *suboblongus* Yao, 1972, p. 29, pl. 3, fig. 1-6; pl. 10, fig. 3a-c.**Remarks:** The fragments of an elliptical ring bearing two distinctive ridged spines are very like those described and illustrated for *S.* (?) *suboblongus*.

Genus SPONGOSATURNALIS Campbell

Spongosaturnalis Campbell in Foreman, 1973, p. 261.*Spongosaturnalis hueyi* (Pessagno)

(Plate 3, Figure 8)

Spongosaturnalis hueyi Pessagno, in press, pl. 12, fig. 1.*Spongosaturnalis hueyi* (Pessagno) in Foreman, 1975, pl. 1A, fig. 6; pl. 4, fig. 10.

Family PHACODISCIDAE Haeckel, 1881 (?)

Genus EMILUVIA Foreman, emend.

Emiluvia Foreman, 1973, p. 262; emend. 1975, p. 612.*Emiluvia chica* Foreman s. l.

(Plate 1, Figure 4)

Emiluvia chica Foreman, 1973, p. 262, pl. 8, fig. 7; 1975, p. 612, pl. 5, fig. 12, 13; Pessagno, in press, pl. 4, fig. 11-13.**Remarks:** The forms originally described by Foreman s.s. had simple spine tips, and distinctly larger nodes at the base of each spine. Pessagno (in press) has since included forms with spines that end with a slender rod-like tip and with nodes at the base of each spine which do not differ in size from those on the rest of the shell. In poor material it is not possible to confidently distinguish these two forms and they are here treated as *E. chica* s.l. In well-preserved material it will be useful to distinguish these two forms as *E. chica* Foreman s.s. differs in the extent of its range (younger) than *E. chica* in Pessagno (in press). A third related form with large nodes over all and spine tips which bifurcate, *Emiluvia hopsoni* Pessagno (in press) also cannot be distinguished in poor material or when the distinctive spine tips are broken off.*Emiluvia chica* s.l. and *E. hopsoni* are tabulated. Question marks in the tabulations indicate uncertainty in identifying *E. chica* s.l. and *E. hopsoni* when they are known to co-occur and specimens are broken.*Emiluvia hopsoni* Pessagno

(Plate 1, Figure 3)

Emiluvia hopsoni Pessagno, in press, pl. 4, fig. 14-16; pl. 5, fig. 1-7.**Remarks:** See "Remarks" under *E. chica*.*Emiluvia pessagnoii* Foreman

(Plate 1, Figures 1, 2)

Emiluvia pessagnoii Foreman, 1973, p. 262, pl. 8, fig. 6, 1975, p. 612. [?] *Emiluvia pessagnoii* Pessagno, in press, pl. 5, fig. 8.**Remarks:** The form figured by Pessagno is only doubtfully included because no nodes can be distinguished on its surface.

Family PHASELIFORMIDAE Pessagno, 1972

Genus PHASELIFORMA Pessagno

Phaseliforma Pessagno, 1972a, p. 274.*Phaseliforma* spp.

(Plate 3, Figure 3)

Remarks: A variety of forms belonging to this genus are present throughout the Maestrichtian-Campanian sequence of Hole 369A. The illustrated form differs from any of the species described by Pessagno in its shape.

Family PSEUDOAULOPHACIDAE Riedel, 1967a

Remarks: Most of the members of this family observed here, do not readily fit into the evolutionary scheme proposed by Pessagno (1972b). Most of the specimens illustrated may therefore represent entirely new species and lineages. They are, in this material, too rare to attempt a complete description, only some dimensions, descriptive notes, and an illustration are given.

Genus ALIEVIUM Pessagno emend.

Alievium Pessagno, 1972b, emend. Foreman, 1973, p. 262.*Alievium* sp. A.

(Plate 3, Figures 4, 6)

Pseudoaulophacus gallowayi (White) (?) in Kozlova and Petrushevskaya, 1972, p. 527, pl. 6, fig. 1.**Remarks:** This species differs from *Alievium superbun* in the smaller size of its shell and the larger size of its spines. The shape varies from triangular to almost rectangular.*Alievium* sp. B

(Plate 3, Figures 1, 2)

Remarks: This species differs from *A. murpheyi* Pessagno in having short, basally bladed spines, with a much larger meshwork. Measurements of one specimen are as follows: width of shell 210 μ m, length of spines 45 μ m, 50 μ m. It is extremely rare and has been observed only in Samples 36-5, 65-67 cm; 36, CC; and 38, CC from the Late Cretaceous sequence of Hole 369A.

Genus PSEUDOAULOPHACUS Pessagno

Pseudoaulophacus Pessagno, 1963, p. 200.*Pseudoaulophacus pargueraensis* Pessagno

(Plate 3, Figure 9)

Pseudoaulophacus pargueraensis Pessagno, 1963, p. 204, pl. 2, fig. 4, 7; pl. 6, fig. 4, 5.*Pseudoaulophacus* sp. aff. *P. delvallensis*

(Plate 3, Figure 5)

Pseudoaulophacus delvallensis Pessagno, in press, pl. 9, fig. 9, 10.**Remarks:** The form illustrated here was observed too late to be recorded on the occurrence chart. It appears to be related to *P. delvallensis*, but differs from that form in having much sturdier, and longer, three-bladed spines.

Family SPONGODISCIDAE Haeckel, 1862; emend. Riedel, 1967b

Genus PARONAELLA Pessagno

Paronaella Pessagno, 1971, p. 46; Foreman, 1973, p. 262.*Paronaella* (?) *diamphidia* Foreman

(Plate 1, Figures 5, 6)

Paronaella (?) *diamphidia* Foreman, 1973, p. 262, pl. 8, fig. 3, 4.**Remarks:** The early specimens observed here either lack or have a very much reduced, weak, oblique, third arm.

Genus TRIACTINOSPHERA Dunikowski

Triactinosphaera Dunikowski, 1882, p. 192. Type species (by monotypy) *Triactinosphaera zitteli* Dunikowski, 1882, p. 192, pl. 6, fig. 69, 69a, 70, 70a.

Triactinosphaera morenoensis (Campbell)
(Plate 2, Figure 20)

Spongotropus (Spongotropodiscus) morenoensis Campbell in Campbell and Clark, 1944, p. 19, pl. 5, fig. 1.
Rhopalastrum tumidum Lipman, 1952, p. 37, pl. 2, fig. 13.
Triactinosphaera sp. Foreman, in press, pl. 1, fig. 13.

Hagiastrin cf. Stauroloichidium tuberosum Rüst
(Plate 3, Figure 7)

Stauroloichidium tuberosum Rüst, 1898, p. 10, pl. 2, fig. 7.
Hagiastrin cf. *Stauroloichidium tuberosum* Rüst in Riedel and Sanfilippo, 1974, p. 779, pl. 14, fig. 5-8.

Remarks: Only broken fragments of this distinctive form have been observed.

Family SPONGOURIDAE Haeckel, 1862

Genus ARCHAEOSPONGOPRUNUM Pessagno

Archaeospongoprunum Pessagno, 1973, p. 57.

Archaeospongoprunum imlayi Pessagno
(Plate 1, Figure 12)

Archaeospongoprunum imlayi Pessagno, in press, pl. 3, fig. 1, 2.

Archaeospongoprunum spp.
(Plate 2, Figures 11, 12)

Remarks: *Archaeospongoprunum hueyi* is present in the Late Cretaceous sequence of Hole 369A. Other forms with four-bladed spines, one twisted, are also present. These cannot be identified confidently as *A. cortinaensis* because of their greater size, and appearance in strata outside the range given by Pessagno for that species. Specimens of *Archaeospongoprunum* are common, but they frequently have one or both spines broken thus making them difficult to identify and tabulate individually. They all appear as *Archaeospongoprunum* spp. on the occurrence table.

Nassellaria Ehrenberg, 1875

Family AMPHIPYNDACIDAE Riedel, 1967a

Genus AMPHIPYNDAX Foreman

Amphipyndax, Foreman, 1966, p. 355.

Amphipyndax enesseffi Foreman
(Plate 4, Figure 3)

Amphipyndax enesseffi Foreman, 1966, p. 356, fig. 10, 11.

Remarks: *A. enesseffi* may be distinguished from *A. tylotus* as described under the "Remarks" for that species.

Amphipyndax plousios Foreman
(Plate 4, Figure 5)

Amphipyndax plousios Foreman, 1968, p. 79, pl. 8, fig. 11.

Amphipyndax stocki (Campbell)
(Plate 4, Figure 4)

Amphipyndax stocki (Campbell) in Foreman, 1968, p. 78, pl. 8, fig. 12a-c.

Remarks: As noted in 1968, forms included vary considerably in appearance because of the variation in pore size among individual specimens. Although it still does not seem feasible to divide this species on the basis of pore size, it seems useful to note that in the Late Cretaceous sequence of Hole 369A, specimens with large pores are more common in the Maestrichtian and early Maestrichtian-late Campanian samples than in the Campanian samples.

Amphipyndax tylotus Foreman new species
(Plate 4, Figures 1, 2)

Amphipyndax tylotus Foreman, in press, pl. 1, fig. 1.

Amphipyndax sp. aff. *A. enesseffi* Foreman in Petrushevskaya and Kozlova, 1972, pl. 8, fig. 14.

Amphipyndax enesseffi Foreman in Petrushevskaya and Kozlova, 1972, pl. 8, fig. 15.

Description: Shell acutely conical proximally, tending to become cylindrical distally, with the most distal segments narrowing slightly.

Although the last segment is always broken, there is some evidence to suggest it may constrict to form a wide terminal tube. The poreless cephalis is internally as for other members of this genus and externally roughened by small shallow nodes. The remaining segments all have numerous, small, rounded, subcircular pores, generally irregularly arranged, sometimes with a tendency to transverse alignment. Random ridges on the intervening pore bars between groups of pores form nodes when they coalesce. These irregularly arranged nodes are well developed on all the post-cephalic segments except the thorax where they are rather shallow and the one or two constricting terminal segments which are less robust.

Measurements (based on 10 specimens from Hole 369A, Cores 35, 36, and 38; and Hole 13A, Core 2). Greatest length of specimen with 11 + segments 370 μ m; length of seven segments 185-220 μ m; width of seventh segment 85-110 μ m.

Remarks: This species is distinguished from *Amphipyndax enesseffi*, which it resembles, by having segments with nodes over all, rather than only on the segment dividing strictures. The two species co-occur towards the end of the range of *A. enesseffi*, and *A. tylotus* may be considered a descendant of that species.

Etymology: The specific name is from the Greek adjective *tylotos*, knobby.

Family ARTOSTROBIIDAE Riedel 1967a

Genus THEOCAMPE Haeckel, emend.

Theocampe Haeckel, 1887; emend. Burma, 1959, p. 328.

Theocampe altamontensis (Campbell)
(Plate 5, Figure 27)

Tricolocampe (Tricolocamptra) altamontensis Campbell in Campbell and Clark, 1944, p. 33, pl. 7, fig. 24, 26.

Theocampe altamontensis (Campbell) in Foreman, 1968, p. 53, pl. 6, fig. 14a, b.

Theocampe apicata Foreman
(Plate 5, Figures 21, 22, 28)

Theocampe apicata Foreman, 1971, p. 1679, pl. 4, fig. C.

[?] *Dictyomitra ehrenbergi* Zittel, 1876, p. 82, pl. 2, fig. 5.

Theocampe sp. *P. Kozlova* in Petrushevskaya and Kozlova, p. 537, pl. 7, fig. 1.

Remarks: Some of the late forms observed in this material are not as distinctly flattened, or triangular in shape when observed perpendicular to the lateral plane as the early forms described from DSDP, Hole 61 (Foreman, 1971). They are, however, all more expanded in that plane than in the sagittal plane. Measurements for the abdomen of one of these narrower forms are: greatest width in lateral plane 70 μ m in sagittal plane 55 μ m. Narrow forms are distinguished from *T. lispa* and *T. ascalia* by being expanded in the lateral plane. *T. apicata* also differs from *T. lispa* in having a shorter thorax and a more constricted even aperture, and from *T. ascalia* in having a longer abdomen. (Compare *T. lispa* Plate 5, Figure 29, and *T. apicata* Plate 5, Figure 28.)

Dictyomitra ehrenbergi Zittel is questionably synonymized with *T. apicata* because of its short thorax and shape, which is similar to the late forms of *T. apicata* observed here. It might equally well be synonymized with *T. ascalia* which also has a short thorax and a relatively wider aperture as does *D. ehrenbergi*. Measurements of *D. ehrenbergi* fall intermediately between *T. apicata* and *T. ascalia*. It will be necessary to examine topotypic material before this question can be resolved.

Theocampe bassilis Foreman
(Plate 5, Figure 25)

Theocampe bassilis Foreman, 1968, p. 50, pl. 6, fig. 10.

Theocampe ? bassilis Foreman in Petrushevskaya and Kozlova, 1972, p. 537, pl. 7, fig. 7.

Remarks: See "Remarks" under *T. daseia* for distinguishing features.

Theocampe daseia Foreman
(Plate 5, Figure 26)

Theocampe daseia Foreman, 1968, p. 48, pl. 6, fig. 9a, b.

Theocampe ? sp. aff. *T. daseia* Foreman in Petrushevskaya and Kozlova, 1972, p. 537, pl. 7, fig. 8-10.

Remarks: *T. daseia* and *T. bassilis* may be distinguished from each other by the larger thorax and smaller abdominal pores of *T. daseia*. The presence of a distinct sharp apical horn for *T. daseia* mentioned by Foreman (1968) as a distinguishing feature, is not applicable to the material from the Maestrichtian-Campanian sequence of Hole 369A.

Theocampe lispa Foreman
(Plate 5, Figure 29)

Theocampe lispa Foreman, 1968, p. 49, pl. 6, fig. 11.

Remarks: This form, although extremely rare here, is illustrated in order to distinguish it from *T. apicata*. See "Remarks" under *T. apicata*.

Theocampe salillum

Theocampe salillum Foreman, 1971, p. 1678, pl. 3, fig. 4.

Family PARVICINGULIDAE Pessagno, in press

Remarks: Although the material from Hole 367 was too poor to identify many individual species, members of the family could be easily recognized by their distinctive closely spaced rings of ridges. *Mirifusus boesii* is apparently the last representative of the family.

Genus MIRIFUSUS Pessagno

Mirifusus Pessagno, in press. Type species (by original designation)
Mirifusus guadalupensis Pessagno, in press (b), pl. 10, fig. 9, 10.

Mirifusus boesii (Parona)
(Plate 2, Figure 6)

Dictyomitra boesii Parona, 1890, p. 170, pl. 6, fig. 9; Riedel and Sanfilippo, 1974, p. 778, pl. 4, fig. 5, 6.

Mirifusus mediodilatata (Rüst) s.l.
(Plate 2, Figure 3)

Lithocampe mediodilatata Rüst, 1885, p. 316, pl. 40, fig. 9.
Foreman, 1975, p. 616, pl. 2K, fig. 2; pl. 6, fig. 17.

Mirifusus (?) *mediodilatata* (Rüst) in Pessagno, in press (b), pl. 11, fig. 1, 2.

Mirifusus baileyi Pessagno, in press (b), pl. 10, fig. 6-8; pl. 11, fig. 9-11.

Mirifusus guadalupensis Pessagno, in press (b), pl. 10, fig. 9-14.

Mirifusus sp. A Pessagno, in press (b), pl. 10, fig. 15, 16.

Gen. and sp. indet. Foreman, 1973, pl. 12, fig. 2.

Remarks: The delicate distinctions based on layers of the shell could not be distinguished in this material or in any of the other DSDP samples where this form has been observed. Frequently only fragments of a shell are found and no distinction on the basis of shape can be made. It therefore seems useful to be able to record this species in a much broader sense than that given by Pessagno. *M. mediodilatata* s.l. as defined here includes all forms with the distinctive two-row triangular to subtriangular pattern of pores, each two-row segment defined externally by a raised area made up of coalescing nodes. At the present time this surface pattern is known only from forms with a relatively slender proximal portion, and a greatly expanded central part, which on the better preserved specimens narrows to form a cylindrical distal part. Fragments of shell may be distinguished from the smaller more cylindrical species assigned to the genus *Parvicingula* by their size.

This form on the basis of its shape might equally well be assigned to the subfamily *Syringocapsinae*.

Family THEOPERIDAE Haeckel, 1881; emend. Riedel, 1967b

Genus CINCLOPYRAMIS Haeckel

Cinclopyramis Haeckel, 1879, p. 705. Type species (by monotypy)
Cinclopyramis murrayana Haeckel, 1879, p. 705.

Cinclopyramis sanjoaquinensis (Campbell)
(Plate 5, Figures 15, 23)

Bathropyramis (*Acropyramis*) *sanjoaquinensis* Campbell in Campbell and Clark, 1944, p. 22, pl. 7, fig. 2.

Bathropyramis sanjoaquinensis Campbell and Clark in Petrushevskaya and Kozlova, 1972, p. 551, pl. 7, fig. 20.

Bathropyramis sp. Riedel and Sanfilippo, 1974, p. 775, pl. 3, fig. 9, 11.

Genus CLATHROPYRGUS Haeckel

Clathropyrgus Haeckel, 1881, p. 435. No legal type species has been designated.

Clathropyrgus titthium Riedel and Sanfilippo
(Plate 5, Figure 19)

Clathropyrgus titthium Riedel and Sanfilippo, 1974, p. 775, pl. 3, fig. 12; pl. 12, fig. 10-12.

Remarks: This species is recorded only from Core 39 in Hole 369A, and thus its upper limit would seem to fall near the top of the Campanian. It has, however, been previously observed from CAS loc. 39545 (Foreman, 1968) early Maestrichtian(?) late Campanian, and thus may range slightly higher.

Genus CYRTOCALPIS Haeckel

Cyrtocalpis Haeckel, 1860, p. 835. Type species (subsequent designation by Campbell, 1954, p. D121) *Cyrtocalpis amphora* Haeckel, 1860, p. 835; 1862, pl. 5, fig. 2.

Remarks: There is little likelihood that the Tertiary type species of *Cyrtocalpis* is related to *C. operosa*. The generic assignment remains unchanged as a matter of convenience.

Cyrtocalpis sp. aff. *operosa* Tan Sin Hok
(Plate 5, Figure 6)

Cyrtocalpis operosa Tan Sin Hok in Riedel and Sanfilippo, 1974, p. 778, pl. 4, fig. 1-3; pl. 14, fig. 10.

Remarks: The shell is very similar to that of *Cyrtocalpis operosa* Tan Sin Hok in Riedel and Sanfilippo, 1974, but differs from that form in having pores arranged in transverse rows.

Genus DICTYOMITRA Zittel

Dictyomitra Zittel, 1876, p. 77. Foreman, 1973, p. 263.

Dictyomitra andersoni (Campbell)
(Plate 4, Figure 6)

Dictyomitra andersoni (Campbell) in Foreman, 1968, p. 68, pl. 7, fig. 6a-d.

Remarks: See "Remarks" under *Dictyomitra* sp. cf. *Diplostrobus crassispina*.

Dictyomitra duodecimcostata duodecimcostata (Squinabol)
(Plate 4, Figures 8, 9)

Lithostrobus duodecimcostata Squinabol, 1903, p. 138, pl. 10, fig. 21.

Dictyomitra duodecimcostata (Squinabol) in Foreman, 1975, p. 614 (partim), pl. 7, fig. 8.

Dictyomitra torquata Foreman, 1973, pl. 15, fig. 9, 11.

Remarks: As our knowledge of *D. duodecimcostata* has increased it seems useful to divide it into two subspecies, *D. duodecimcostata duodecimcostata* which is robust, may or may not have a first or second expanded segment which is differentiated from the remaining segments either by size or shape, but must have all the subsequent segments completely convexly expanded, except for one or two last cylindrical segments. *Dictyomitra duodecimcostata torquata* also may or may not have a first and/or second differentiated segment. It differs, however, in having all the subsequent segments proximally concave and only distally expanded. A second row of pores is present on the distal half of these distal segments. Some of the very latest forms of *D. duodecimcostata duodecimcostata* tend to have these distal segments evenly expanded (Plate 4, Figure 9). The more typical form is illustrated on Plate 4, Figure 8.

Dictyomitra duodecimcostata torquata Foreman

Dictyomitra torquata Foreman, 1971, p. 1676, pl. 3, fig. 4; 1973, pl. 15, fig. 10; 1975, p. 614 (partim).

Remarks: *Dictyomitra duodecimcostata torquata* as a subspecies has a somewhat narrower definition than the original *D. torquata* Foreman (1971). See "Remarks" under *D. duodecimcostata duodecimcostata*.

Dictyomitra koslovae Foreman
(Plate 4, Figure 10)

Dictyomitra koslovae Foreman, 1975, p. 614, pl. 7, fig. 4.

Dictyomitra sp. in Foreman, 1971, p. 1677, pl. 3, fig. 5; 1973, pl. 15, fig. 13-15.

Dictyomitra lamellicostata Foreman
(Plate 4, Figures 13, 14)

Dictyomitra lamellicostata Foreman, 1968, p. 65, pl. 7, fig. 8a, b.

Dictyomitra regina (Campbell)

Dictyomitra regina (Campbell) in Foreman, 1968, p. 68, pl. 8, fig. 5a-c.

Remarks: Only one specimen of this species was observed in Sample 39, CC in the Maestrichtian-Campanian sequence of Hole 369A.

Dictyomitra sp. cf. Diplostrobos crassispina Squinabol
(Plate 4, Figure 7)

Dictyomitra cf. *Diplostrobos crassispina* Squinabol in Foreman, 1968, p. 67, pl. 7, fig. 7a, b.

Remarks: There is a great variation in size in both *Dictyomitra andersoni* and *D. sp. cf. Diplostrobos crassispina*. They may be distinguished from one another by the following features: *D. andersoni* has segments which do not increase regularly in length. The longest segment of that form is usually a median one. It also has only moderately symmetrically inflated segments. *D. sp. cf. Diplostrobos crassispina*, on the other hand, has on the conical portion, which is the part which may be confused with *D. andersoni*, segments increasing regularly in length and individual segments which are more inflated on their proximal half.

Genus EUCYRTIDIUM Ehrenberg

Eucyrtidium Ehrenberg, 1847a, chart to p. 385. Type species (by subsequent designation) Frizzell and Middour, 1951, p. 33. *Lithocampe acuminata* Ehrenberg, 1844, p. 84 = *Eucyrtidium acuminatum* (Ehrenberg) in Ehrenberg 1854b, pl. 22, fig. 27.

Eucyrtidium (?) ptyctum Riedel and Sanfilippo
(Plate 2, Figure 5)

Eucyrtidium (?) *ptyctum* Riedel and Sanfilippo, 1974, p. 778, pl. 5, fig. 7, pl. 12, fig. 14, 15.

[?] *Eucyrtidium* (?) *ptyctum* Riedel and Sanfilippo in Pessagno, in press (b), pl. 12, fig. 7.

Remarks: The form illustrated in Pessagno (in press [b]) is only doubtfully included because it appears to have a cephalis and thorax with pores.

Genus HSUUM Pessagno

Hsuum Pessagno, in press (b). Type species (by original designation) *Hsuum cuestaensis* Pessagno, in press (b), pl. 7, fig. 12.

Hsuum spp.
(Plate 2, Figure 7)

Remarks: Included under this designation are all conical to cylindrical-conical forms with longitudinal ribs, very narrow segments, and little or no segmental constriction externally.

Although members of this genus are common in the material studied, poor preservation did not allow the individual species described by Pessagno to be recognized confidently and consistently. Rarely *H. stanleyensis* Pessagno and *H. obispoensis* Pessagno could be identified. The youngest form recognized belonging to this genus is *Hsuum apiarum* (Rüst) which ranges upward well into the *Eucyrtis tenuis* Zone.

Genus LITHOSTROBUS Bütschli

Lithostrobos Bütschli, 1881, p. 529. Type species (subsequent designation by Campbell, 1954, p. D141) *Eucyrtidium argus* Ehrenberg, 1873, p. 225; 1875, pl. 9, fig. 1.

Lithostrobos litus Foreman, new species
(Plate 4, Figure 12)

Stichocapsa sp. Kozlova in Petrushevskaya and Kozlova, 1972, pl. 8, fig. 7.

Lithostrobos sp. A Foreman, in press, pl. 1, fig. 9.

Description: The shell is conical to subcylindrical generally wide open distally, very rarely slightly constricted. There are no expressed external strictures. The large cephalis, probably with six collar pores, bears a short, bladed horn. Post cephalic segments expand gradually in width, their length varying according to the number of rows of pores, one to four on each segment. The pores are subround to

rectangular; when rectangular the long axis is generally vertical, rarely transverse. Pores of adjacent segments are opposed and sometimes coalesce, otherwise the pores are quincuncially arranged. They tend to decrease in size on the distalmost segments.

Measurements (based on eight specimens from Hole 369A, Cores 36 and 37). Greatest number of segments 9+; length of two specimens of nine segments each 250 and 280 μm , length of five segments 125-175 μm ; width of fifth segment 125-155 μm .

Remarks: In the material from Hole 369A specimens with segments bearing two rows of pores predominate. Similar forms observed from Hole 13A-3 are only doubtfully included because of their smaller size, common tendency for the last one or two segments to constrict, and the presence of weak longitudinal ridges. Two specimens with 6+ segments measured 177 μm ; the length of five segments on these two specimens were 140 and 165 μm ; and their width was 100 and 115 μm .

Etyymology: The specific name is from the Greek adjective *litos*, plain.

Lithostrobos punctulatus (Pessagno) emend. Foreman
(Plate 4, Figure 11)

Lithostrobos (*Lithostrobos*) *punctulatus* Pessagno, 1963, p. 210 (partim), pl. 1, fig. 1; pl. 5, fig. 5 (?) (Not fig. 4).

Lithostrobos punctulatus Pessagno in Foreman, in press, pl. 1, fig. 6.

Description: The shell has six to eight preserved segments, is acutely conical proximally, continuing conical or becoming cylindrical distally and occasionally the last segment is slightly narrowed. The poreless cephalis is hyaline, subspherical and smooth except for varying numbers of tiny protrusions apically, one sometimes lengthened to form a small apical spine. Four collar pores are present at the collar stricture. The first two post-cephalic segments are rather short and have pores rather irregularly arranged. The remaining segments increase very gradually in length and have circular to elliptical pores very uniformly quincuncially arranged to form diagonal and transverse rows, four to six transverse rows per segment. The first transverse row below each stricture sometimes has slightly larger pores than those on the remaining part of the segment. Shallow nodes to short sharp spines are present at the junctions of the intervening pore bars. When these are uniformly developed their spreading bases form diamond-shaped frames around the individual pores. At the strictures, narrow, angular, longitudinal, ridge-like nodes protrude between each set of opposed pores.

Measurements (based on 10 specimens from Sample 369A-38, CC and Cuba B191 Foreman [1971] where this species is particularly well developed). Length overall of specimens with 7+ to 8+ segments 210-240 μm , length of six segments 140-150 μm ; width of sixth segment 80-85 μm .

Remarks: The specimens measured appear to be remarkably uniform. Specimens at the upper end of their range from Hole 369A tend to be conical throughout their length and have more robust longitudinal ridge-like nodes at the strictures. This form differs from *Amphipyndax enesseffi* with which it co-occurs in having a simple cephalis; pores larger and more regularly arranged; and angular, ridge-like nodes between each set of opposed pores at the strictures.

Lithostrobos sp. aff. Lithostrobos rostovzevi Lipman
(Plate 5, Figure 5)

Lithostrobos rostovzevi Lipman, 1960, p. 133, pl. 32, fig. 1-10, text-fig. 9.

Remarks: The forms in this material differ from *L. rostovzevi* Lipman only in having thicker walls and normally thick intervening strictures. Sometimes this wall thickening appears to be a surface feature with groups of pores enclosed by ridges forming larger rounded superficial pores. The external shape of the cephalis, which internally has a branched vertical spine as in Foreman (1966, text-fig. 4-6), is compatible with the external shape of *L. rostovzevi*. No indication of internal cephalic structures is given for *L. rostovzevi*. Specimens generally have five segments.

Genus MYLLOCERCION Foreman

Myllocercion Foreman, 1968, p. 37.

Myllocercion spp.
(Plate 5, Figure 8)

Remarks: Specimens of *Myllocercion* are absent or present in varying amounts throughout the Maestrichtian-Campanian sequence of Hole 369A. Rare complete forms indicate that both *M. rhodan*

and *M. acineton* are present. Generally, however, they are present without the distinguishing third segment and thus they have all been recorded as *Mylolocerion* spp. on the occurrence table.

Genus STICHOMITRA Cayeux

Stichomitra Cayeux, 1897, p. 204. Type species (subsequent designation by Chediya, 1959, p. 232) *Stichomitra costata* Cayeux, 1897, p. 204, pl. 8, fig. 68.

Remarks: It is not likely that this costate form is related to any of the species here assigned to the genus *Stichomitra*. The generic name is used here in the sense of Foreman (1968, p. 71).

Stichomitra asymbatos group Foreman (Plate 4, Figure 15)

Stichomitra asymbatos Foreman, 1968, p. 73, pl. 8, fig. 10a-c.

Stichomitra asymmetra Foreman n. sp. (Plate 5, Figure 2)

Stichomitra asymmetra Foreman, in press, pl. 1, fig. 10.

Stichomitra sp. cf. *S. cathara* Foreman in Johnson, 1974, pl. 1, fig. 13, 14.

(?) *Lithocampe* sp. A Dumitrica, 1973, p. 789, pl. 4, fig. 7; pl. 10, fig. 3; pl. 11, fig. 3.

Description: Shell of from five to eight segments plus a short narrow fragile tube. The first three to four segments are conical and the remainder cylindrical with the last segment before the tube generally slightly narrowed and less sturdy than the preceding segments. The small cephalis may bear a short slender apical horn or have the cephalic wall thickened at the apex. The lumbar stricture is generally not horizontal and thus the cephalis and thorax frequently appear askew. Cephalis and thorax are both poreless except for an occasional specimen which may have a few pores at the lumbar stricture. The remaining segments have small, widely spaced, rounded pores, generally irregularly arranged and recessed in angular frames. These frames result in a rough surface and on the distal segments give rise to nodes or occasional downward directed spines at their junctures. The tube is frequently broken off, but when present is thin-walled with rounded pores, irregularly arranged or tending toward transverse alignment.

Measurements (based on 10 specimens from Hole 369A, Cores 36 and 37). Length of longest complete specimen 130 μm , of five segments 85-100 μm ; greatest width 50-70 μm , width of tube 30-35 μm .

Remarks: A related form (Plate 5, Figure 1) from the California Academy of Science locality 39545 Alameda Co., California, differs in having more closely spaced, more numerous pores without frames and thus a smoother surface. These specimens also tend to have more segments, be less regular in width, and lack spines.

Etymology: The specific name is from the Greek adjective *asymmetros*, without symmetry.

Stichomitra compsa Foreman (Plate 5, Figure 3)

Stichomitra compsa Foreman, 1968, p. 72, pl. 8, fig. 8a, b.

Remarks: See "Remarks" under *Stichomitra manifesta*.

Stichomitra manifesta Foreman, n. sp. (Plate 5, Figure 4)

Diacanthocapsa sp. B Kozlova in Petrushevskaya and Kozlova, 1972, p. 536, pl. 7, fig. 5.

Stichomitra sp. A Foreman, in press, pl. 1, fig. 11.

Description: This robust species is here generally preserved with four or five segments. Rare specimens have only three, and one specimen has as many as seven. The cephalis is small, subspherical, and may have widely spaced ridges which join the angular pore frames that encircle the small, rounded, widely spaced pores of the thorax. The thorax is characteristically hemispherical, generally greater in length than the next succeeding segment. The post-thoracic segments have relatively large rounded pores set in angular frames, irregular in size and arrangement, except for some specimens on which the pores show a distinct tendency towards transverse alignment. The pores increase gradually in size distally except between the thorax and the first succeeding segment where there is a marked change in pore size.

Measurements (based on 10 specimens from Hole 369A, Cores 36 and 37). Length of one specimen with seven segments 210 μm , of four specimens of five segments 140-170 μm .

Remarks: This species may be distinguished from specimens of *S. compsa* with large pores, with which it co-occurs, by its larger, hemispherical thoracic segment. Compare Figures 3 and 4 on Plate 5.

Etymology: The specific name is from the Latin adjective *manifestus*, clear, visible.

Genus STICHOPILIDIUM Haeckel, emend.

Stichopilidium Haeckel, 1887; emend. Foreman, 1968, p. 70.

Stichopilidium teslaense Campbell

Stichopilidium teslaense Campbell, in Foreman, 1968, p. 70, pl. 8, fig. 13.

Genus THEOCAPSOMMA Haeckel, emend.

Theocapsomma Haeckel, 1887; emend. Foreman, 1963, p. 29.

Theocapsomma comys group Foreman (Plate 5, Figures 11, 12)

Theocapsomma comys Foreman, 1968, p. 29, pl. 4, fig. 2a-c.

Remarks: *Theocapsomma comys* as originally described from the late Maestrichtian has not been observed in any of numerous early Maestrichtian or late Campanian samples examined. In many samples, however, there are forms with the first two segments very like *T. comys* and the abdomen completely or partly broken off. In some of the samples where these broken forms occur, rare forms with complete abdomens have always proved to differ from *T. comys* in having less regularly disposed pores on the abdomen, pores differing in size from those on the thorax, an abdominal aperture, or a combination of two or more of these features (Plate 5, Figure 12). This variety of three segmented forms with pores in regular vertical rows on the thorax is defined as the *Theocapsomma comys* group. In the material from Hole 369A no complete forms of *T. comys* have been observed; only specimens with no, or a small fragment of the abdomen present occur. Thus these forms are all recorded as belonging to the *Theocapsomma comys* group.

It is here considered that the definition of the *Theocapsomma comys* Zone of Riedel and Sanfilippo, which is defined as the first appearance of *Theocapsomma comys* Foreman, actually refers to the first appearance of the *Theocapsomma comys* group.

Theocapsomma teren Foreman (Plate 5, Figure 7)

Theocapsomma teren Foreman, 1968, p. 32, pl. 4, fig. 4.

Theocapsomma sp. aff. *T. comys* Foreman (Plate 5, Figure 10)

Remarks: This interesting form, although very rare, is illustrated and tabulated because of its apparent restricted range and robust shell. It differs from *T. comys* by the very large size of its pores. The distal half of the abdomen has not been seen.

Gen. and sp. indet. (Plate 2, Figure 4)

cf. Gen. and sp. indet. Foreman, 1971, p. 1676, pl. 3, fig. 1.

Remarks: This form from Hole 367 is basically an ellipsoid with a small, partly enclosed cephalis and a small, round aperture distally. There are approximately nine longitudinal ridges or undulations per half a circumference. It is not certain if the post-cephalic part is divided into two or more segments which without external strictures could not be distinguished in this material, or, as in the form illustrated by Foreman (1971), is composed of only one segment. This post-cephalic part appears to be poreless, though this may be the result of the poor preservation.

Subfamily SYRINGOCAPSINAE Foreman, 1973

Genus PODOBURSA Wiśniowski, emend.

Podobursa Wiśniowski, 1889, emend. Foreman, 1973, p. 266.

Podobursa triacantha (Fischli)

Podobursa triacantha (Fischli) in Foreman, 1973, p. 266, pl. 13, fig. 1-7.

Remarks: This species continues to be defined very broadly as in Foreman, 1973.

Podobursa pantanellii (Parona)
(Plate 1, Figure 17)

- Podocapsa pantanellii* Parona, 1890, p. 164, pl. 5, fig. 8.
Indeterminatum Heitzer, 1930, p. 387, pl. 27, fig. 7.
Podobursa pantanellii (Parona) in Riedel and Sanfilippo, 1974,
p. 779, pl. 8, fig. 5; pl. 13, fig. 6.
Podobursa berggreni Pessagno, in press (b), pl. 12, fig. 1-5.

Remarks: The distinctive branched spine and tube terminations make this a very easily recognized form.

Genus **PODOCAPSA** Rüst, emend.

Podocapsa Rüst, 1885, p. 304; emend. Foreman, 1973, p. 267.

Podocapsa amphitrepta Foreman
(Plate 1, Figure 16)

Podocapsa amphitrepta Foreman, 1973, p. 267, pl. 13, fig. 11;
1975, p. 617, pl. 6, fig. 15.

Remarks: Later specimens tend to have the globose segment larger and more inflated than do earlier ones. See Foreman, 1973, 1975.

Genus **SETHOCAPSA** Haeckel

Sethocapsa Haeckel, 1881, Foreman, 1973, p. 267.

Sethocapsa cetia Foreman
(Plate 2, Figure 1)

Sethocapsa cetia Foreman, 1973, p. 268, pl. 12, fig. 1; pl. 16,
fig. 19; Foreman, 1975, p. 617, pl. 6, fig. 14.

[?] *Obesacapsula cetia* (Foreman) in Pessagno, in press (b), pl. 11,
fig. 4.

Remarks: *Obesacapsula cetia* is only doubtfully included, because it lacks well-developed nodes and terminates in a broad tube, both features which have not been observed in this species heretofore.

Sethocapsa trachyostraca Foreman
(Plate 1, Figure 18)

Sethocapsa trachyostraca Foreman, 1973, p. 268, pl. 12, fig. 4; 1975,
p. 617, pl. 2J, fig. 3, 4.

Sethocapsa sp. cf. Theocapsa uterculus Parona
(Plate 2, Figure 8)

Sethocapsa spp. cf. *Theocapsa uterculus* Parona in Foreman, 1975,
p. 617, pl. 2I, fig. 21, 22.

Genus **SYRINGOCAPSA** Neviani

Syringocapsa Neviani, 1900. Type species (by monotypy)
Theosyringium robustum Vinassa, 1900, p. 343, pl. 3, fig. 30.

Syringocapsa rotunda (Hinde)
(Plate 2, Figure 2)

Stichocapsa (?) *rotunda* Hinde in Foreman, 1975, p. 616, pl. 2J,
fig. 6; pl. 7, fig. 5.

Remarks: In the description of this species Foreman (1973, p. 265) stated "no aperture is apparent." Since then, both in the material examined from DSDP Leg 32 and Leg 41, a slender cylindrical distalmost part has been observed to extend from the large subglobose abdomen, and thus the generic assignment has been changed.

Radiolaria of uncertain affinities

Genus **ACIDNOMELOS** Foreman

Acidnomelos Foreman, 1968, p. 24.

Acidnomelos proapteron Foreman, n. sp.
(Plate 5, Figure 13)

Acidnomelos proapteron Foreman, in press, pl. 1, fig. 12.

Description: Shell of two segments, subcylindrical. The cephalis is approximately hemispherical, poreless, except for a vertical pore, and a sharp apical spine which may be slender or very broad based. Externally the collar stricture is marked by no or only a very slight change in contour. The thorax is cylindrical, smooth except for ridges which are very variably developed on individual specimens. Some extend as a group of two or three from the apical spine to the base of

a foot where they coalesce to form a blade on the foot. Others are developed as single ridges beginning to be expressed anywhere from the apical spine to about midway along the length of the thorax. Sometimes the ridges are barely visible. Pores are small, circular, widely and irregularly spaced.

Measurements (based on 10 specimens from Hole 369A, Cores 38 and 39). Length overall, including horn and feet 130-190 μm , length of cephalis and thorax 100-140 μm ; greatest width 55-75 μm .

Remarks: This form is closely related to, and may be considered as the ancestor of *Acidnomelos apteron* reported from the late Maestrichtian of California. It differs from that form in having a more cylindrical thorax and feet originating from ridges on the shell. When the ridges are entirely missing this form passes to *A. apteron*.

Etymology: The specific name is from the Greek preposition *pro*, before, and the species name *apteron*, which was derived from the Greek adjective *apteros*, without wings.

Genus **LITHOMELISSA** Ehrenberg

Lithomelissa Ehrenberg, 1847b. Type species (by subsequent monotypy) *Lithomelissa microptera* Ehrenberg, 1854b, pl. 36, fig. 2.

Lithomelissa (?) heros Campbell
(Plate 5, Figure 14)

(?) *Lithomelissa heros* Campbell in Foreman, 1968, p. 25, pl. 3,
fig. 5a, b; text-fig. 1, fig. 7.

Lithomelissa (?) hoplites Foreman
(Plate 5, Figure 9)

(?) *Lithomelissa hoplites* Foreman, 1968, p. 26, pl. 3, fig. 2a-c.
Lithomelissa (?) *hoplites* Foreman, in press, pl. 1, fig. 7.

Genus **LOPHOPHAENA** Ehrenberg

Lophophaena Ehrenberg, 1847b, p. 54. Type species (by subsequent monotypy) *Lophophaena galeaorci* Ehrenberg, 1854a, p. 245.

Lophophaenula Haeckel, 1887, p. 1303. Junior objective synonym of *Lophophaena* Ehrenberg, 1847b.

Lophophaena (?) polycyrtis (Campbell)
(Plate 5, Figure 20)

(?) *Lophophaena polycyrtis* (Campbell) in Foreman, 1968, p. 23,
pl. 3, fig. 3a-c.

Lophophaena (?) *polycyrtis* (Campbell) in Foreman, in press, pl. 1,
fig. 8.

Genus **RHOPALOSYRINGIUM** Campbell emend.

Rhopalosyringium Campbell in Campbell and Clark, 1944, p. 30.
Type species (by original designation) *Rhopalosyringium magnificum* Campbell in Campbell and Clark, 1944, p. 30, pl. 7,
fig. 16, 17; emend. Foreman, 1968, p. 54.

Rhopalosyringium antirrhopum Riedel and Sanfilippo
(Plate 5, Figure 16)

Rhopalosyringium antirrhopum Riedel and Sanfilippo, 1974, p. 780,
pl. 9, fig. 13; pl. 13, fig. 8-10.

Remarks: Only three specimens of this form were observed in Samples 35, CC and 37-1, 141-143 cm, from the Maestrichtian-Campanian sequence of Hole 369A.

Rhopalosyringium colpodes Foreman
(Plate 5, Figure 18)

Rhopalosyringium colpodes Foreman, 1968, p. 57, pl. 6, fig. 6.
Rhopalosyringium sp. aff. *R. colpodes* Kozlova in Petrushevskaya and Kozlova, 1972, p. 537, pl. 7, fig. 12.

Rhopalosyringium sparnon Foreman
(Plate 5, Figure 17)

Rhopalosyringium sparnon Foreman, 1968, p. 56, pl. 6, fig. 5.

Incertae Sedis

Genus **AFENS** Riedel and Sanfilippo

Afens Riedel and Sanfilippo, 1974, p. 775. Type species (by monotypy) *Afens lirioides* Riedel and Sanfilippo, 1974, p. 775,
pl. 13, fig. 15.

Afens lirioides Riedel and Sanfilippo
(Plate 5, Figure 24)

Afens lirioides Riedel and Sanfilippo, 1974, p. 775, pl. 11, fig. 11; pl. 13, fig. 14-16.

ACKNOWLEDGMENTS

The author wishes to thank David Johnson for arranging for the shipboard sampling. Financial support for this work was provided by the Oceanography section, National Science Foundation, Grant DES 75-19288.

REFERENCES

- Burma, B.H., 1959. On the status of *Theocampe* Haeckel, and certain similar genera: *Micropaleontology*, v. 5, p. 325-330.
- Bütschli, Otto, 1881. Beiträge zur Kenntnis der Radiolarienskelett, insbesondere der Cyrtida: *Z. Wiss. Zool.*, v. 36, p. 485-540.
- Campbell, A.S., 1954. Radiolaria. In Moore, R.C. (Ed.), *Treatise on invertebrate paleontology*, Part D. Protista 3. Protozoa (chiefly Radiolaria and Tintinnina): *Geol. Soc. Am. and Univ. Kans. Press, Lawrence*, p. D11-D163.
- Campbell, A.S. and Clark, B.L., 1944. Radiolaria from Upper Cretaceous of middle California: *Geol. Soc. Am., Spec. Paper* 57.
- Cayeux, L., 1897. Contribution à l'étude micrographique des terrains sédimentaires. 1. Etude de quelque dépôts siliceux secondaires et tertiaires du Bassin de Paris et de la Belgique. 2. Craie du Bassin de Paris: *Soc. Géol. Nord, Mém.*, Lille, v. 4, p. 1-591.
- Chediya, D.M., 1959. Obzor sistematiki Radioliarii (Observation on the systematics of the Radiolaria): *Tadzhikskii Gosudarstvennyi Universitet, Stalingrad*, p. 1-330.
- Deflandre, G., 1953. Radiolaries fossiles. In Grassé, P.-P. (Ed.), *Traité de Zoologie*: Paris (Masson), v. 1, p. 389-436.
- Dumitrica, P., 1973. Paleocene Radiolaria, DSDP Leg 21. In Burns, R.E., Andrews, J.E., et al., *Initial Reports of the Deep Sea Drilling Project, Volume 21*: Washington (U.S. Government Printing Office), p. 787-817.
- Dunikowski, E. v., 1882. Die Spongien, Radiolarien und Foraminiferen der unterliassischen Schichten vom Schafberg bei Salzburg: *K. Akad. Wiss., Wein, Denkschr.*, v. 45, p. 163-195.
- Ehrenberg, C.G., 1844. Über 2 neue Lager von Gebirgsmassen aus Infusorien als Meeres-Absatz in Nord-Amerika und eine Vergleichung derselben mit den organischen Kreide-Gebilden in Europa und Afrika: *Kgl. Preuss. Akad. Wiss. Berlin, Ber.*, Jahre 1844, p. 57-97.
- _____, 1847a. Über eine halibolithische, von Herrn R. Schomburgk entdeckte, vorherrschend aus mikroskopischen Polycystinen gebildete, Gebirgsmasse von Barbados: *Kgl. Preuss. Akad. Wiss. Berlin, Ber.*, Jahre 1846, p. 382-385.
- _____, 1847b. Über die mikroskopischen kieselschaligen Polycystinen als mächtige Gebirgsmasse von Barbados und über das Verhältniss der aus mehr als 300 neuen Arten bestehenden ganz eigenthümlichen Formengruppe jener Felsmasse zu den jetzt lebenden Thieren und zur Kreidebildung. Eine neue Anregung zur Erforschung des Erdlebens: *Kgl. Preuss. Akad. Wiss. Berlin, Ber.*, Jahre 1847, p. 40-60.
- _____, 1854a. Die systematische Charakteristik der neuen mikroskopischen Organismen des tiefen atlantischen Oceans: *Kgl. Preuss. Akad. Wiss. Berlin, Ber.*, Jahre 1854, p. 236-250.
- _____, 1854b. *Mikrogeologie*: Leipzig (Voss), xxviii + 374 p.; Atlas, 31 p., 41 pl.; Fortsetzung (1856), 88 p.
- _____, 1873. Grössere Felsproben des Polycystinen—Mergels von Barbados mit weiteren Erläuterungen: *Kgl. Preuss. Akad. Wiss. Berlin, Monatsber.*, Jahre 1873, p. 213-263.
- _____, 1875. Fortsetzung der mikrogeologischen Studien als Gesamt-Uebersicht der mikroskopischen Paläontologie gleichartig analysirter Gebirgsarten der Erde, mit specieller Rücksicht auf den Polycystinen-Mergel von Barbados: *Kgl. Akad. Wiss. Berlin, Abh.*, Jahre 1875, p. 1-225.
- Foreman, H.P., 1966. Two Cretaceous radiolarian genera: *Micropaleontology*, v. 12, p. 355-359.
- _____, 1968. Upper Maestrichtian Radiolaria of California: *Palaeontol. Assoc., London, Spec. Paper* 3, p. iv + 1-82.
- _____, 1971. Cretaceous Radiolaria. In Winterer, E.L., Riedel, W.R., et al., *Initial Reports of the Deep Sea Drilling Project, Volume 7*: Washington (U.S. Government Printing Office), p. 1673-1693.
- _____, 1973. Radiolaria from DSDP Leg 20. In Heezen, B.C., MacGregor, I.D., et al., *Initial Reports of the Deep Sea Drilling Project, Volume 20*: Washington (U.S. Government Printing Office), p. 249-305.
- _____, 1975. Radiolaria from the North Pacific, Deep Sea Drilling Project, Leg 32. In Larson, R.L., Moberley, R., et al., *Initial Reports of the Deep Sea Drilling Project, Volume 32*: Washington (U.S. Government Printing Office), p. 579-676, 24 pls.
- _____, in press. Mesozoic Radiolaria from the Atlantic Basin and its borderlands: *Univ. Delaware Symp. Micropaleontol. of the Atlantic Basin and its Borderlands*.
- Foreman, H.P. and Riedel, W.R., in press. Polycystine Radiolaria 1834-1930. v. 1.
- Frizzell, D.L. and Middour, E.S., 1951. Paleocene Radiolaria from southeastern Missouri: *Univ. Missouri School Mines, Tech. Ser.*, no. 77.
- Haeckel, E., 1860. Fernere Abbildungen und Diagnosen neuer Gattungen und Arten von Lebenden Radiolarien des Mittelmeeres: *Kgl. Preuss. Akad. Wiss. Berlin, Monatsber.*, Jahre 1860, p. 835-845.
- _____, 1862. Die Radiolarien (Rhizopoda Radiaria): *Berlin (Reimer)*, xiv + 572 p.; Atlas; IV p + 35 pl.
- _____, 1879. *Natürliche Schöpfungsgeschichte*: Berlin (Reimer), 718 p., 17 pl.
- _____, 1881. Entwurf eines Radiolarien-Systems auf Grund von Studien der Challenger-Radiolarien: *Jena. Z. Med. Naturwiss.*, v. 15 (new ser., v. 8), p. 418-472.
- _____, 1887. Report on the Radiolaria collected by H.M.S. *Challenger* during the years 1873-1876: *Rept. Sci. Result. Voyage H.M.S. Challenger, Zool.*, v. 18.
- Heitzer, I., 1930. Die Radiolarienfauna der mitteljurassischen Kieselmergel im Sonnwendgebirge: *Austr., Geol. Bundesanst., Jahrb.*, v. 80, p. 381-406.
- Johnson, D.A., 1974. Radiolaria from the Eastern Indian Ocean, DSDP Leg 22. In von der Borch, C.C., Sclater, J.G., et al., *Initial Reports of the Deep Sea Drilling Project, Volume 22*: Washington (U.S. Government Printing Office), p. 521-575.
- Kozlova, G.E., 1972. (See Petrushevskaya and Kozlova, 1972.)
- Kozlova, G.E. and Gorbovetz, A.N., 1966. Radiolarij verkhnemelovykh i verkhneotsenovykh otlozhenij zapadno-Sibirskoi nizmennosti. (Radiolarians of the Upper Cretaceous and upper Eocene deposits of the west Siberian lowland.): *Trudy VNIGRI*, no. 248, p. 1-159.
- Lipman, R.K., 1952. Materialy k monographicheskomu izucheniiu radioliarij verkhnemelovykh otlozhenij russkoi platformy. (Data on the monographic study of the radiolarians of the Upper Cretaceous deposits of the Russian plateau.): *Trudy VSEGEI, Paleontol. Strat.*, p. 24-51.

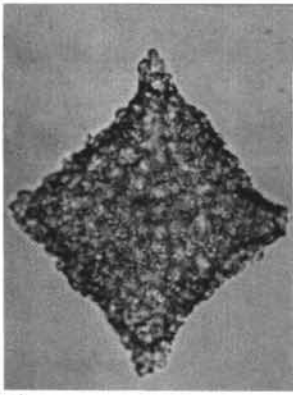
- _____, 1960. Stratigrafiya i fauna melovykh otlozhenii zapadno-Sibirskoi nizmennosti. (Stratigraphy and fauna of the Cretaceous deposits in the western Siberia lowland.): Trudy VSEGEI, new ser., v. 29, p. 124-134.
- Loeblich, A.R., Jr., and Tappan, Helen, 1961. Remarks on the systematics of the Sarkodina (Protozoa), renamed homonyms and new and validated genera: Biol. Soc. Wash., Proc., v. 74, p. 213-234.
- Neviani, A., 1900. Supplemento alla fauna a Radiolari delle rocce mesozoiche del Bolognese: Soc. Geol. Ital., Boll., v. 19, p. 645-670.
- Parona, C.F., 1890. Radiolarie nei noduli, selciosi del calcare giurese di Cittiglio presso Laveno: Soc. Geol. Ital., Boll., v. 9, p. 132-175.
- Pessagno, E.A., Jr., 1963. Upper Cretaceous Radiolaria from Puerto Rico: Micropaleontology, v. 9, p. 197-214.
- _____, 1971. Jurassic and Cretaceous Hagiastriidae from the Blake-Bahama Basin (Site 5A, JOIDES Leg I) and the Great Valley sequence, California Coast Ranges: Bull. Am. Paleontol., v. 60, p. 1-83.
- _____, 1972a. Pt. 1: The Phaseliformidae, new family, and other Spongodiscacae from the Upper Cretaceous portion of the Great Valley sequence. In Cretaceous Radiolaria: Bull. Am. Paleontol., v. 61, p. 267-280, 316-317, 326-328.
- _____, 1972b. Pt. 2: Pseudaulophacidae Riedel from the Cretaceous of California and the Blake-Bahama Basin (JOIDES Leg I). In Cretaceous Radiolaria: Bull. Am. Paleontol., v. 61, p. 281-314, 318-328.
- _____, 1973. Upper Cretaceous Spumellariina from the Great Valley sequence, California Coast Ranges: Bull. Am. Paleontol., v. 63, p. 49-102.
- _____, in press (a). Radiolarian zonation and stratigraphy of the Upper Cretaceous portion of the Great Valley sequence, California Coast Ranges.
- _____, in press (b). Upper Jurassic Radiolaria and radiolarian biostratigraphy of the California Coast Ranges.
- Petrushevskaya, M.G. and Kozlova, G.E., 1972. Radiolaria: Leg 14, Deep Sea Drilling Project. In Hayes, D.E., Pimm, A.C., et al., Initial Reports of the Deep Sea Drilling Project, Volume 14: Washington (U.S. Government Printing Office), p. 495-648.
- Riedel, W.R., 1967a. Some new families of Radiolaria: Geol. Soc. London, Proc., no. 1640, p. 148-149.
- _____, 1967b. Protozoa [Subclass Radiolaria]. In Harland, W.B., et al. (Eds.), The fossil record: London (Geol. Soc. London), p. 291-298.
- Riedel, W.R. and Sanfilippo, A., 1974. Radiolaria from the southern Indian Ocean, DSDP Leg 26. In Davies, T.A., Luyendyk, B.P., et al., Initial Reports of the Deep Sea Drilling Project, Volume 26: Washington (U.S. Government Printing Office), p. 771-814.
- Rüst, D., 1885. Beiträge zur Kenntniss der fossilen Radiolarien aus Gesteinen des Jura: Palaeontographica, v. 31, ser. 3, p. 273-321.
- _____, 1898. Neue Beiträge zur Kenntniss der Fossilen Radiolarien aus Gesteinen des Jura und der Kreide: Palaeontographica, v. 45, p. 1-67.
- Squinabol, S., 1903. Le Radiolaire dei noduli selciosi nella Scaglia degli Euganei. Contribuzione I: Riv. Ital. Paleontol., v. 9, p. 105-151.
- _____, 1914. Contributo alla conoscenza dei Radiolariii fossili del Veneto. Appendice—Di un genere di Radiolari caratteristico del Secondario: Padova, R. Univ. Ist. Geol. Mem., v. 2, p. 249-306.
- Tan Sin Hok, 1927. Over de samenstelling en het ontstaan van krijt-en mergelgesteenten van de Molukken. (On the composition and origin of chalks and marls in the Moluccas.) In Brouwer, H.A. (Ed.), Geologische onderzoekingen in den oostelijken Oost-Indischen Archipel. V. (Geological investigations in the eastern East Indian Archipelago. V.): Jaarb. Mijnwez. Ned. Oost-Indië, v. 55 (1926), pt. 3, p. 3-165.
- Vinassa de Regny, P.E., 1900. Rocce e fossili dei dintorni di Grizzana e di Lagàro nel Bolognese: Soc. Geol. Ital., Boll., v. 19, p. 321-348.
- Wiśniowski, T., 1889. Beitrag zur Kenntniss der Mikrofauna aus der oberjurassischen Feuersteinknollen der Umgegend von Krakau: Kaiserl.-Kgl. Geol. Reichsanst., Jahrb., v. 38 (4), Jahrg. 1888, p. 657-702.
- Yao, A., 1972. Radiolarian fauna from the Mino Belt in the northern part of the Inuyama Area, central Japan: J. Geosci., v. 15, p. 21-65.
- Zittel, K.A., 1876. Ueber einige fossile radiolarien aus der norddeutschen Kreide: Deut. Geol. Ges. Z., v. 28, p. 75-86.

PLATE 1

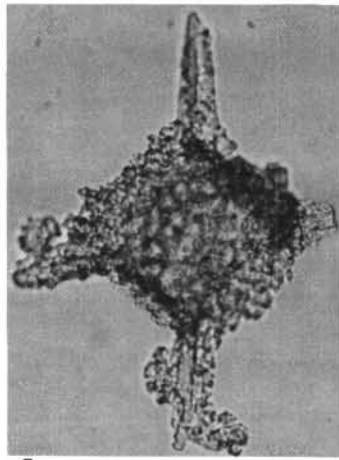
All figures are magnified $\times 113$.

- Figures 1, 2 *Emiluvia pessagnoii*.
 1. Sample 367-36-3, 49-51 cm. Cs. 1, K18/0.
 2. Sample 367-36-3, 49-51 cm. Cs. 1, W13/0.
- Figure 3 *Emiluvia hopsoni*.
 Sample 367-35-2, 42-44 cm. Cs. 1, V46/1.
- Figure 4 *Emiluvia chica*.
 Sample 367-37-1, 147-149 cm. Cs. 2, M34/0.
- Figures 5, 6 *Paronaella (?) diamphidia*.
 5. Sample 367-37-1, 80-82 cm. Sl. A, S19/2.
 6. Sample 367-37-1, 80-82 cm. Fn. A2, F38/1.
- Figure 7 *Acanthocircus dicranacanthos*.
 Sample 367-31-1, 49-50 cm. Fn. 1, T21/2.
- Figure 8 *Acanthocircus* sp. cf. *Spongosaturnalis (?) sub-oblongus*.
 Sample 367-37-1, 147-149 cm. Sl. 2, M23/0.
- Figure 9 *Acanthocircus trizonalis (?)*.
 Sample 367-35-2, 28-31 cm. Fn. 1, L26/4.
- Figure 10 Member of *Sphaerostylus lanceola* group.
 Sample 367-37-1, 80-82 cm. Sl. B, M25/2.
- Figure 11 Ancestral *Sphaerostylus lanceola*.
 Sample 367-37-1, 80-82 cm. Fn. A2, J22/3.
- Figure 12 *Archaeospongoprunum imlayi*.
 Sample 367-37-1, 80-82 cm. Fn. A2, U35/4.
- Figures 13, 14 *Triactoma jonesi*.
 13. Sample 367-35-2, 42-44 cm. Cs. 1, L14/1.
 14. Sample 367-35-2, 42-44 cm. Cs. 1, X33/0.
- Figure 15 *Triactoma blakei*.
 Sample 367-37-1, 147-149 cm. Cs. 2, J12/4.
- Figure 16 *Podocapsa amphitreptera*.
 Sample 367-35-2, 42-44 cm. Cs. 2, T35/0.
- Figure 17 *Podobursa pantanellii*.
 Sample 367-36-3, 49-51 cm. Cs. 1, X30/0.
- Figure 18 *Sethocapsa trachyostraca*.
 Sample 367-29-2, 26-27 cm. Cs. 1, J18/4.

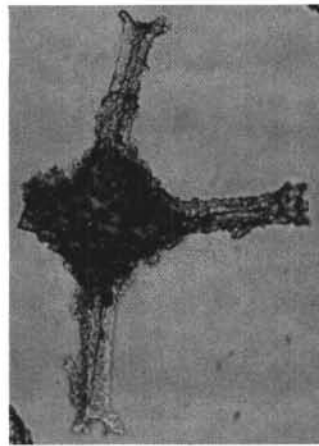
PLATE 1



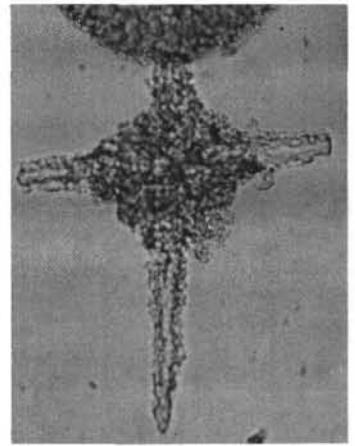
1



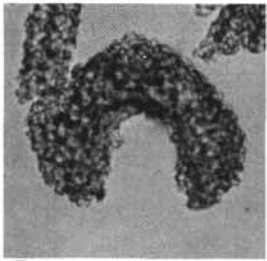
2



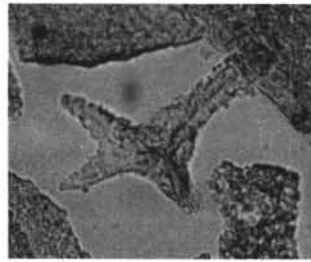
3



4



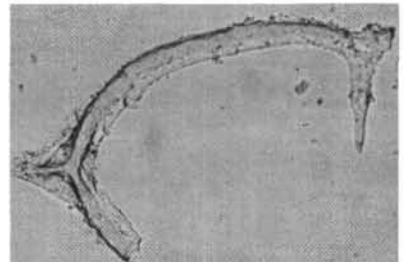
5



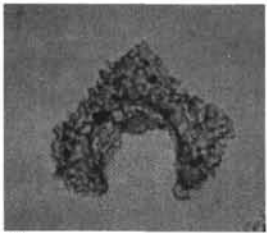
7



8



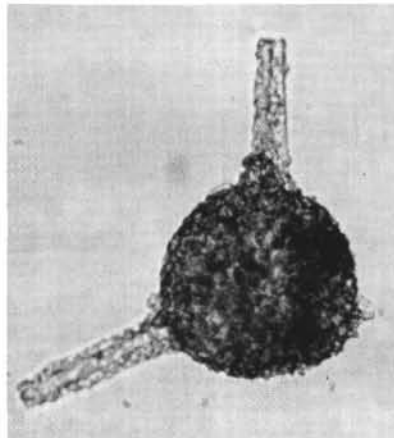
9



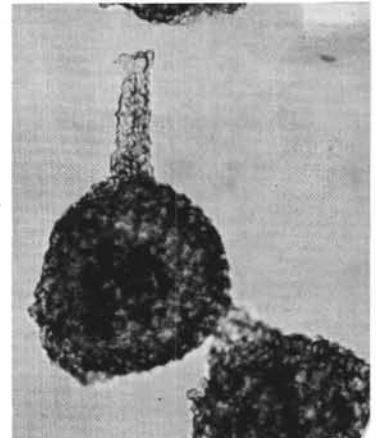
6



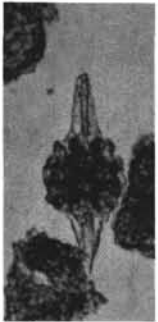
12



13



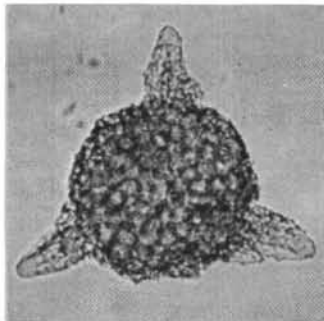
14



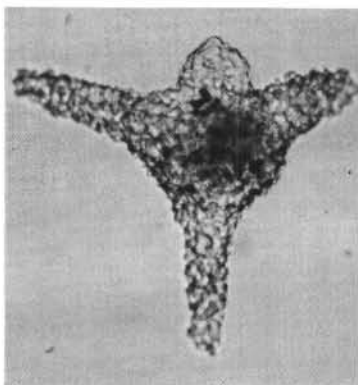
10



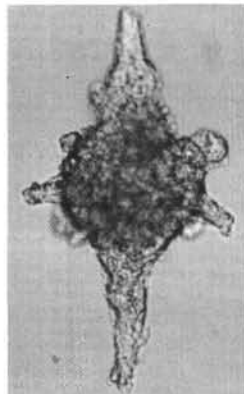
11



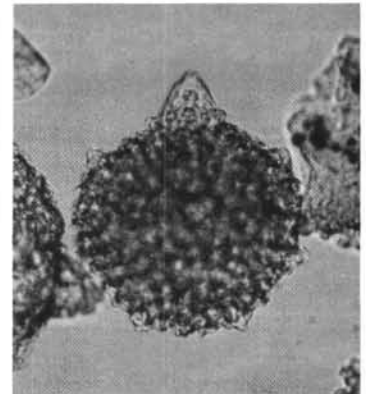
15



16



17



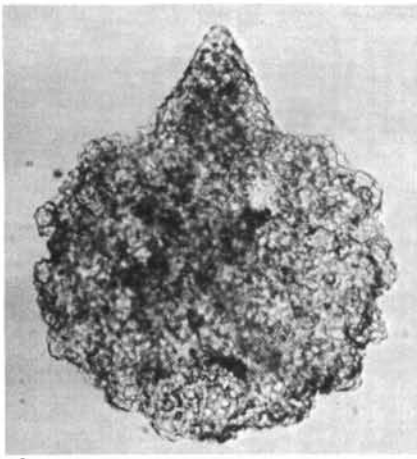
18

PLATE 2

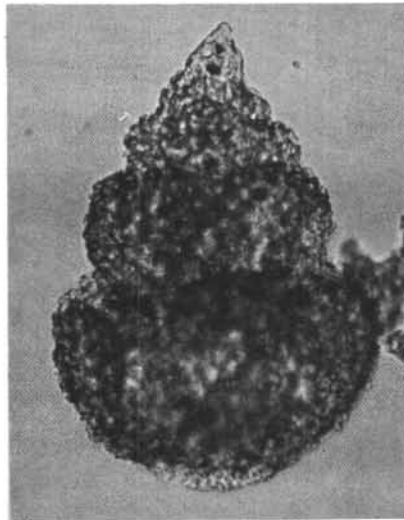
Figures 1-8 are magnified $\times 113$ Figures 9-18 are magnified $\times 214$

- Figure 1 *Sethocapsa cetia*.
Sample 367-35-2, 42-44 cm. Cs. 1, O18/4.
- Figure 2 *Syringocapsa rotunda*.
Sample 367-29-2, 26-27 cm. Cs. 1, V39/2.
- Figure 3 *Mirifusus mediodilatata* s.l.
Sample 367-32-4, 90-92 cm. Sl. 1, B26/0.
- Figure 4 Gen. and sp. indet.
Sample 367-36-3, 49-51 cm. Fn. 1, S41/3.
- Figure 5 *Eucyrtidium* (?) *ptyctum*.
Sample 367-35-2, 28-31 cm. Fn. 1, U12/0.
- Figure 6 *Mirifusus boesii*.
Sample 367-35-2, 42-44 cm. Cs. 1, Q36/2.
- Figure 7 *Hsuum* sp. cf. *H. stanleyensis*.
Sample 367-35-2, 28-31 cm. Fn. 1, U40/3.
- Figure 8 *Sethocapsa* sp. cf. *Theocapsa uterculus*.
Sample 367-29-2, 26-27 cm. Fn. 2, V43/2.
- Figures 9, 10,
17 *Ellipsoxiphus pusilla*.
9. CAS loc. 39545. St. 1490, N50/2.
10. CAS loc. 39545. St. 1490, O27/2.
17. Sample 369A-37-1, 141-143 cm. Sl. 1, O38/3.
- Figure 11 *Archaeospongoprunum* sp. cf. *A. cortinaensis*.
Sample 369A-37-4, 65-69 cm. Sl. 1, Q32/2.
- Figure 12 *Archaeospongoprunum hueyi*.
Sample 369A-37, CC. Sl. 2, N22/4.
- Figure 13 *Ellipsoxiphus hastatus*.
Sample 369A-38, CC. Sl. 1, K34/0.
- Figures 14-16 *Ellipsoxiphus privus*.
14. Sample 369A-39, CC. Fn. 1, F22/4.
15. Sample 369A-38, CC. Sl. 1, L31/4. Holo-
type, USNM 243114.
16. Sample 369A-38, CC. Sl. 1, N21/1.
- Figure 18 *Cromyodruppa* (?) *concentrica*.
Sample 369A-35, CC. Sl. 4, T22/4.
- Figure 19 Gen. and sp. indet.
Sample 369A-37, CC. Sl. 2, S19/3.
- Figure 20 *Triactinosphaera morenoensis*.
Sample 369A-37, CC. Sl. 2, M31/0.
- Figure 21 Gen. and sp. indet.
Sample 369A-37, CC. Sl. 2, P34/3.

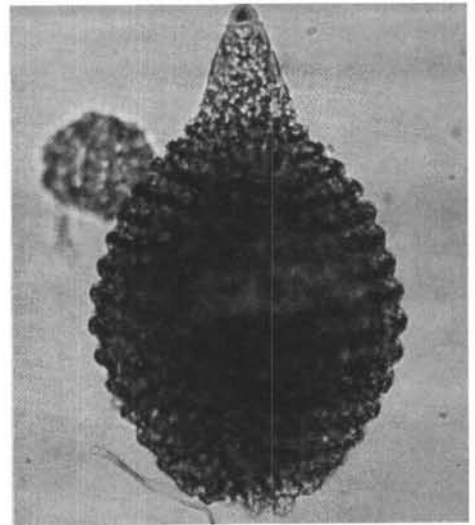
PLATE 2



1



2



3



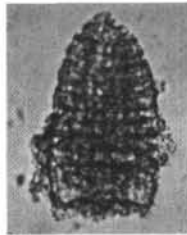
4



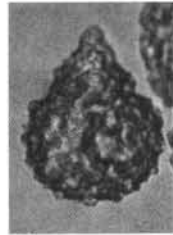
5



6



7



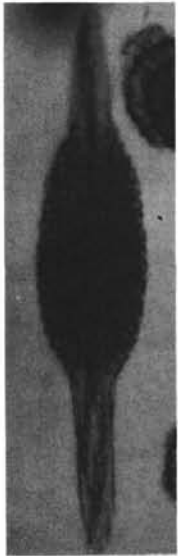
8



9



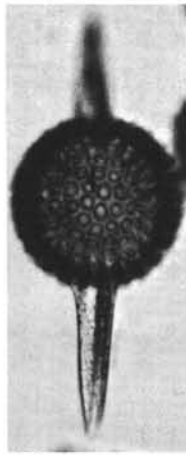
10



11



12



13



14



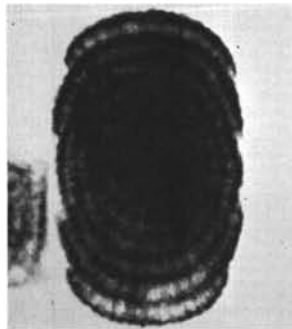
15



16



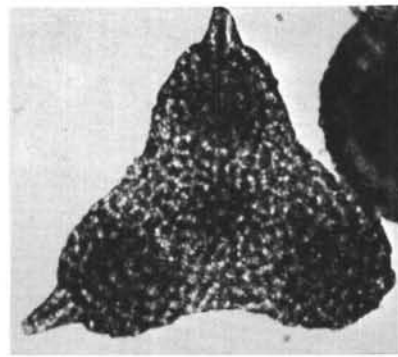
17



18



19



20



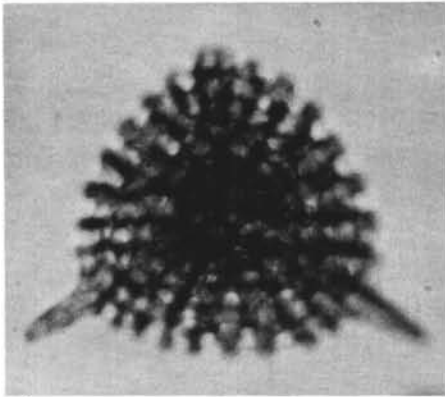
21

PLATE 3

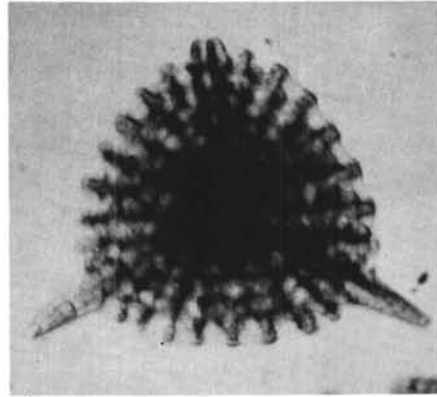
All figures are magnified $\times 214$

- Figures 1, 2 *Alievium* sp. B.
Sample 369A-38, CC. Sl. 1, T16/4.
1. Focus on raised central area.
2. Focus on margin and spines.
- Figure 3 *Phaseliforma* sp.
Sample 369A-37, CC. Sl. 2, H22/3.
- Figures 4, 6 *Alievium* sp. A.
4. Sample 369A-38, CC. Sl. 1, Q16/1.
6. Sample 369A-38, CC. Sl. 1, M43/3.
- Figure 5 *Pseudoaulophacus* sp. aff. *P. delvallensis*.
Sample 369A-38, CC. Sl. 1, T41/0.
- Figure 7 Hagiastrin cf. *Staurolonchidium tuberosum*.
Sample 369A-38, CC. Sl. 1, U17/3.
- Figure 8 *Spongosaturnalis hueyi*.
Sample 369A-38, CC. Sl. 1, J11/2.
- Figure 9 *Pseudoaulophacus pargueraensis*.
Sample 369A-38, CC. Sl. 1, Q16/4.

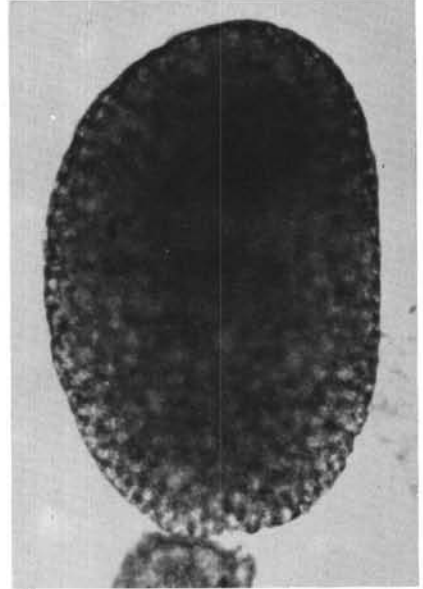
PLATE 3



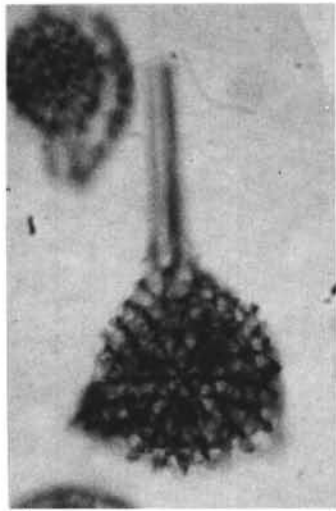
1



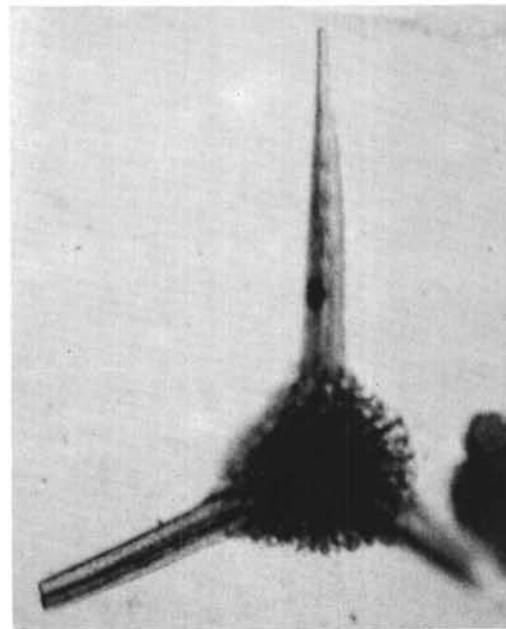
2



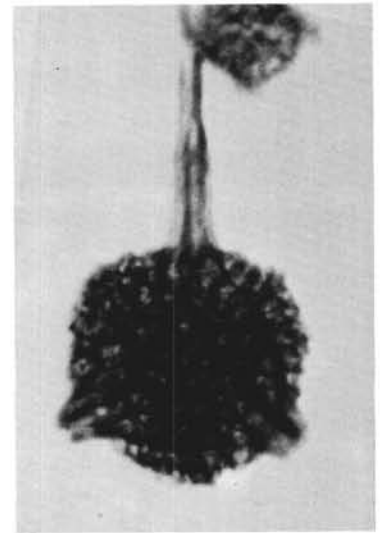
3



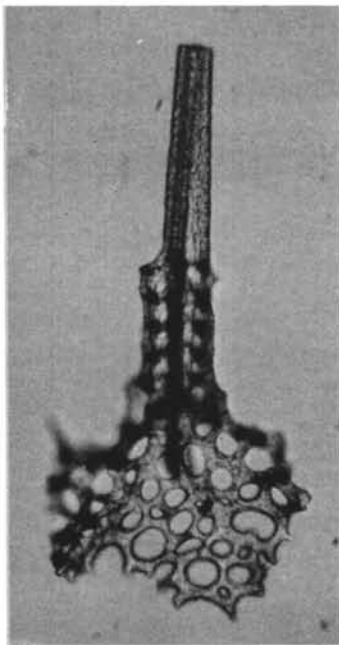
4



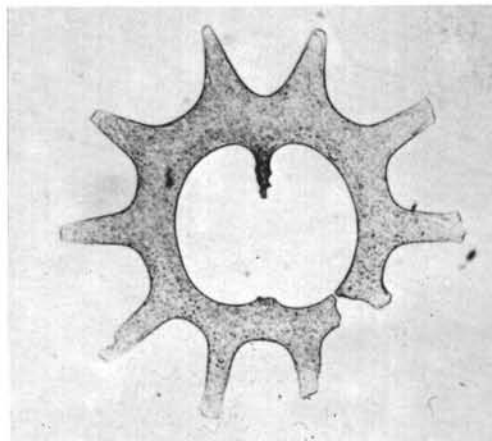
5



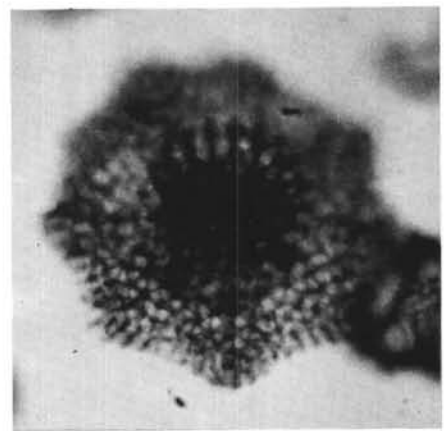
6



7



8



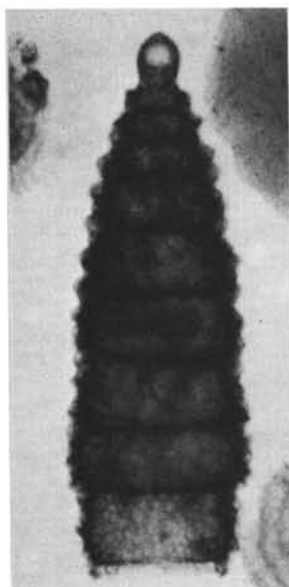
9

PLATE 4

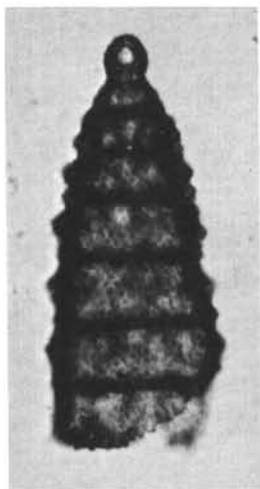
All figures are magnified $\times 214$

- Figures 1, 2 *Amphipyndax tylotus*.
 1. Sample 13A-2-1, 84-86 cm. Fn. 3, K27/4.
 Holotype, USNM 243115.
 2. Sample 369A-38-4, 85-87 cm. Sl. 1, C14/0.
- Figure 3 *Amphipyndax enesseffi*.
 Sample 369A-39-3, 67-70 cm. Sl. 1, E24/3.
- Figure 4 *Amphipyndax stocki*.
 Sample 369A-35, CC. Sl. 4, T27/3.
- Figure 5 *Amphipyndax plousios*.
 Sample 369A-35, CC. Sl. 4, T24/0.
- Figure 6 *Dictyomitra andersoni*.
 Sample 369A-38, CC. Sl. 1, K15/0.
- Figure 7 *Dictyomitra* sp. cf. *Diplostrobos crassispina*.
 Sample 369A-36. CC. Sl. 5, P23/3.
- Figures 8, 9 *Dictyomitra duodecimcostata duodecimcostata*.
 8. Sample 369A-39, CC. Fn. 1, M38/4.
 9. Sample 369A-39, CC. Fn. 1, Q28/4.
- Figure 10 *Dictyomitra koslovae*.
 Sample 369A-39, CC. Fn. 1, N29/4.
- Figure 11 *Lithostrobos punctulatus*. USNM 243116.
 Sample 369A-38, CC. Sl. 1, R18/0.
- Figure 12 *Lithostrobos litus*.
 Sample 369A-36-5, 65-67 cm. Sl. 1, K27/2.
 Holotype, USNM 243117.
- Figures 13, 14 *Dictyomitra lamellicostata*.
 13. Sample 369A-38, CC. Sl. 1, E41/0.
 14. Sample 369A-38, CC. Sl. 1, R16/0.
- Figure 15 *Stichomitra asymbatos*.
 Sample 369A-38, CC. Sl. 1, S34/0.

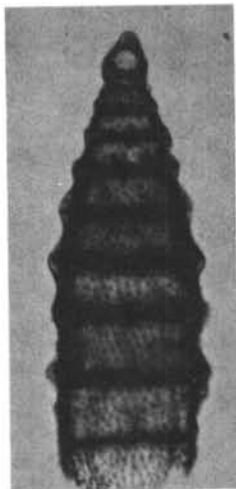
PLATE 4



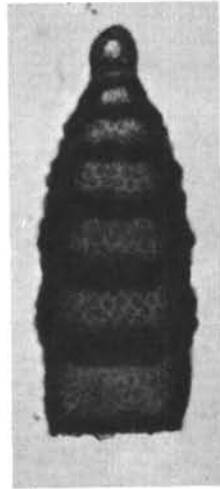
1



2



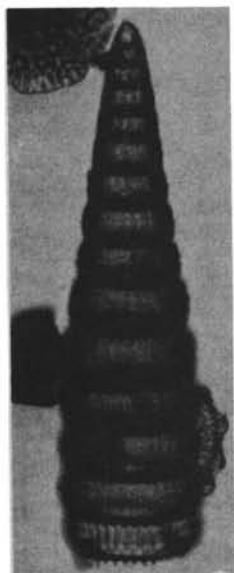
3



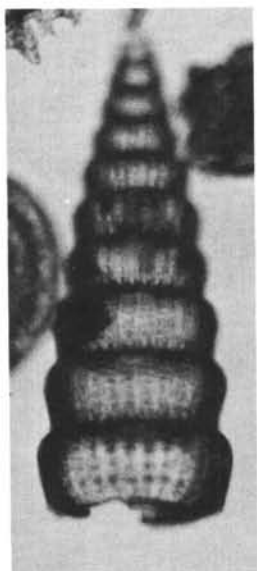
4



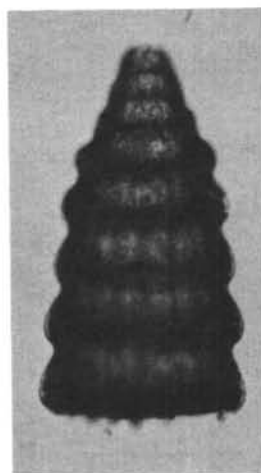
5



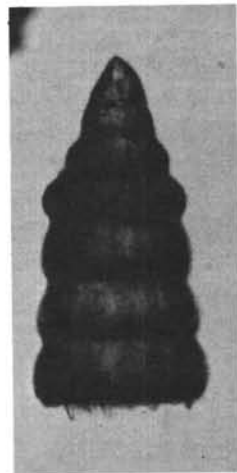
6



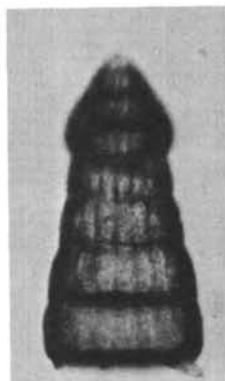
7



8



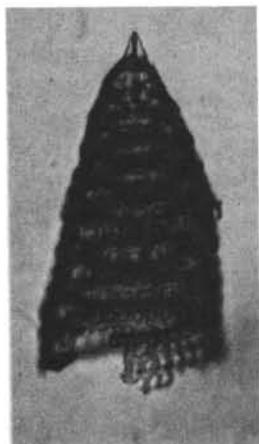
9



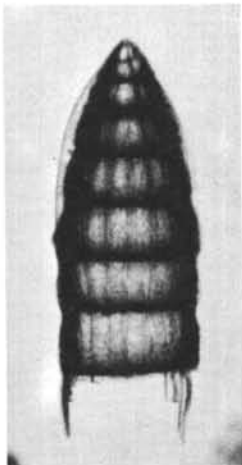
10



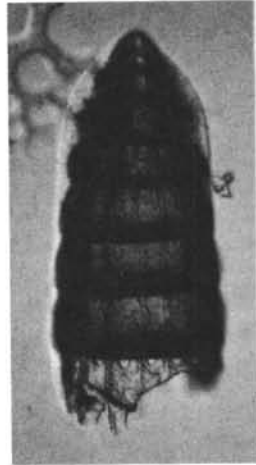
11



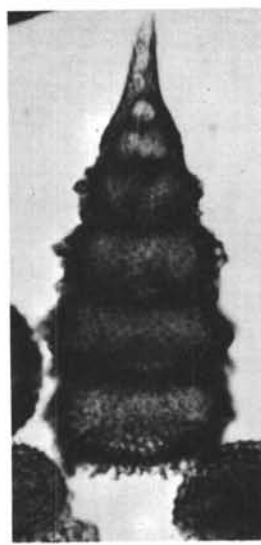
12



13



14



15

PLATE 5
All figures are magnified $\times 214$

- | | | | |
|----------------|---------------------------------------------------------------------------------------------------------------------------|----------------------|---------------------------------------------------------------------------------------------------------------------------------------------------------------------------------------------------------------------------|
| Figure 1 | <i>Stichomitra</i> sp. aff. <i>S. asymmetra</i> .
CAS 39545. St. 1493, S26/4. | Figures 15, 23 | <i>Cinclopyramis sanjoaquinensis</i> .
15. Sample 369A-38, CC. Sl. 1, U15/0.
23. Sample 369A-36-5, 65-67 cm. Sl. 1, U28/2. |
| Figure 2 | <i>Stichomitra asymmetra</i> .
Sample 369A-36-5, 65-67 cm. Sl. 1, O18/4. Holotype, USNM 243118. | Figure 16 | <i>Rhopalosyringium antirrhopum</i> .
Sample 369A-35, CC. Sl. 3, P15/2. |
| Figure 3 | <i>Stichomitra compsa</i> .
Sample 369A-35, CC. Sl. 3, P21/0. | Figure 17 | <i>Rhopalosyringium sparnon</i> .
Sample 369A-35, CC. Sl. 4, J24/4. |
| Figure 4 | <i>Stichomitra manifesta</i> .
Sample 369A-37-4, 65-69 cm. Sl. 1, R34/3. Holotype, USNM 243119. | Figure 18 | <i>Rhopalosyringium colpodes</i> .
Sample 369A-35, CC. Sl. 4, S22/1. |
| Figure 5 | <i>Lithostrobus</i> sp. aff. <i>Lithostrobus rostovzevi</i> .
Sample 369A-39, CC. Fn. 1, N31/1. | Figure 19 | <i>Clathropyrgus titthium</i> .
Sample 369A-39, CC. Fn. 1, T43/3. |
| Figure 6 | <i>Cyrtocalpis</i> sp. aff. <i>C. operosa</i> .
Sample 369A-35, CC. Sl. 3, D15/2. | Figure 20 | <i>Lophophaena</i> (?) <i>polycyrtis</i> .
Sample 369A-35, CC. Sl. 2, C17/4. |
| Figure 7 | <i>Theocapsomma teren</i> .
Sample 369A-35, CC. Sl. 4, T33/0. | Figures 21, 22
28 | <i>Theocampe apicata</i> .
21. Sample 369A-37-4, 65-69 cm. Sl. 1, F31/4. Ventral view.
22. Sample 369A-37-1, 141-143 cm. Sl. 1, R17/0. Ventral view.
28. Sample 369A-37-4, 65-69 cm. Sl. 1, L32/1. Lateral view. |
| Figure 8 | <i>Myllocercion acineton</i> .
Sample 369A-38, CC. Sl. 1, R39/3. | Figure 24 | <i>Afens liriodes</i> .
Sample 369A-37-1, 141-143 cm. Sl. 1, U43/0. |
| Figure 9 | <i>Lithomelissa</i> (?) <i>hoplites</i> .
Sample 369A-35, CC. Sl. 4, P22/0. | Figure 25 | <i>Theocampe bassilis</i> .
Sample 369A-39-3, 67-70 cm. Sl. 1, R34/0. |
| Figure 10 | <i>Theocapsomma</i> sp. aff. <i>T. comys</i> .
Sample 369A-35, CC. Sl. 4, T41/1. | Figure 26 | <i>Theocampe daseia</i> .
Sample 369A-35, CC. Sl. 4, T33/0. |
| Figures 11, 12 | <i>Theocapsomma comys</i> group.
11. Sample 369A-36-5, 65-67 cm. Sl. 1, T24/0.
12. V18-129, 78 cm. St. 1421, J17/1. | Figure 27 | <i>Theocampe altamontensis</i> .
Sample 369A-35, CC. Sl. 3, P40/4. |
| Figure 13 | <i>Acidnomelos proapteron</i> .
Sample 369A-38, CC. Sl. 1, P30/3. Holotype, USNM 243120. | Figure 29 | <i>Theocampe lispa</i> .
Sample 369A-35, CC. Sl. 2, N32/0. Lateral view. |
| Figure 14 | <i>Lithomelissa</i> (?) <i>heros</i> .
Sample 369A-39-1, 75-77 cm. Sl. 1, O28/0. | | |

PLATE 5

