




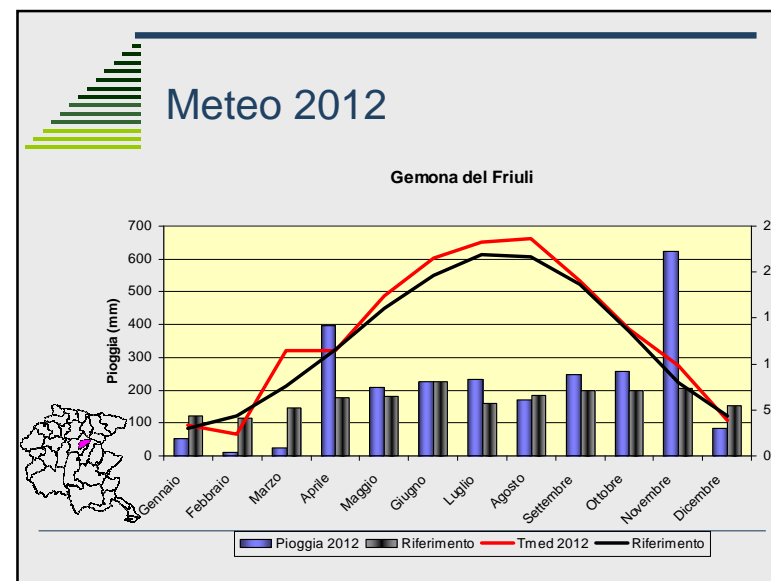
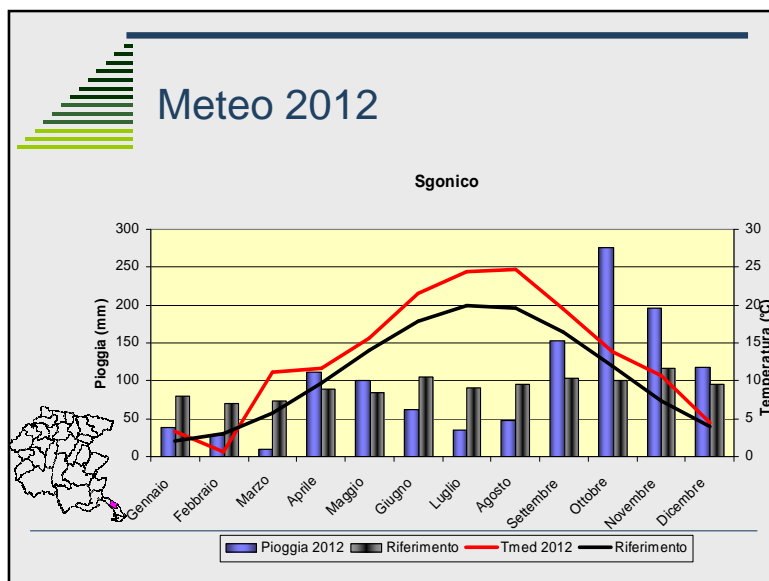
Riunione BAUSINVE 2013

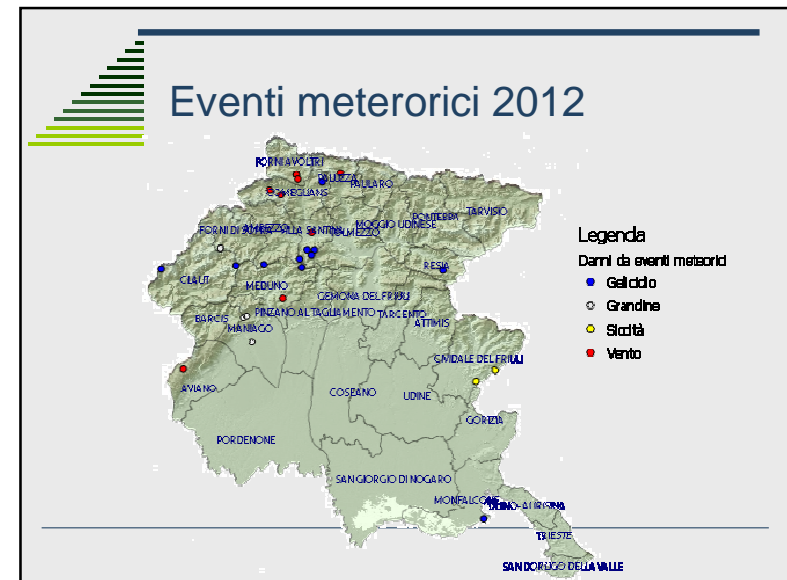
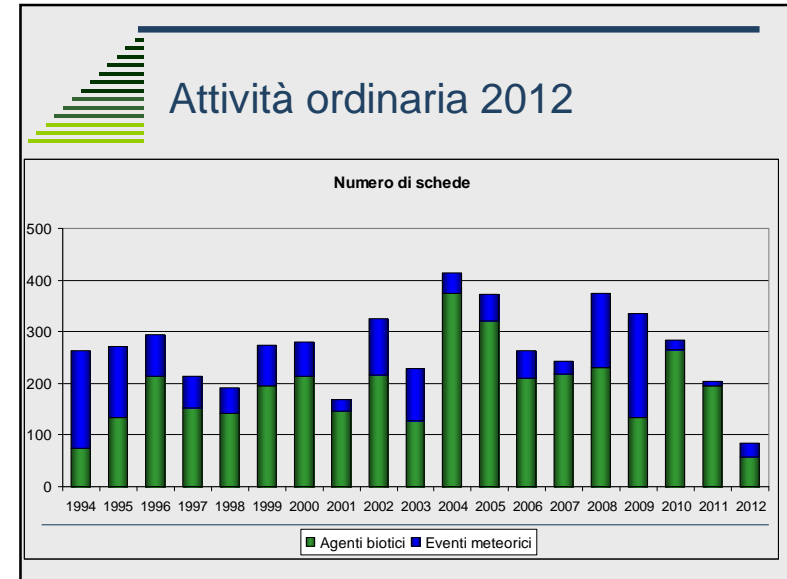
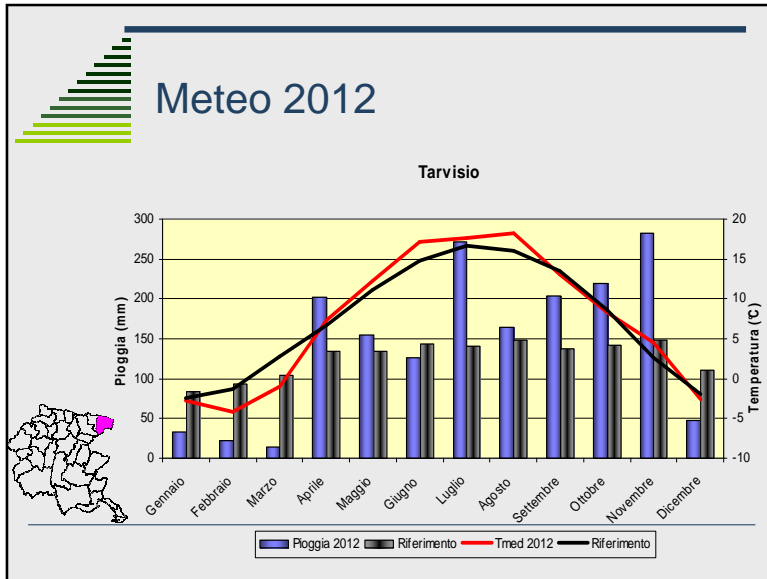
Sintesi 2012

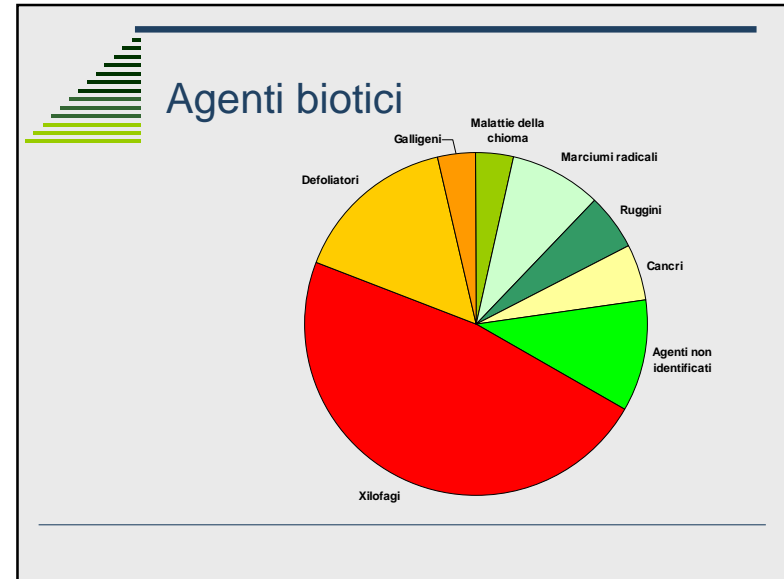
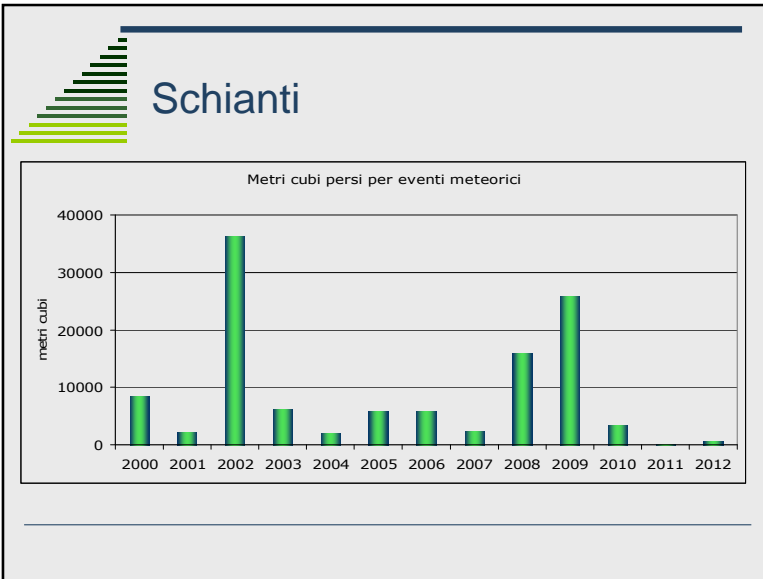


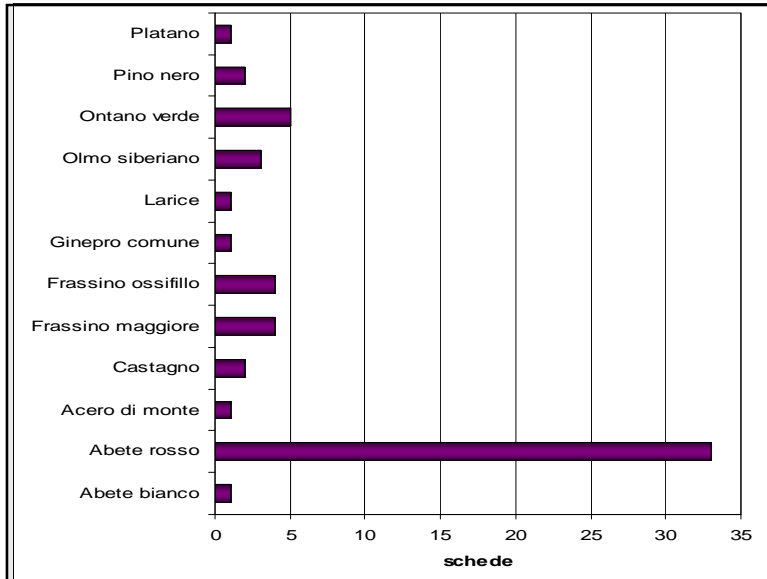
Sintesi sull'andamento meteo 2012

- **Inverno:**
 - Inverno complessivamente abbastanza secco con alcune giornate di gelo intenso anche in pianura
- **Primavera:**
 - marzo molto secco poi da aprile piogge abbondanti
- **Estate:**
 - Gran parte dell'estate è stata caratterizzata da caldo e secco anche se in alcune zone (montane) sono stati frequenti i temporali Temperature medime più alte del trentennio di riferimento
- **Autunno:**
 - Piogge abbondanti e intense
 - Temperature sono state particolarmente elevate per il periodo









Platano

- *Splanchnonema platani*
 - SF Tarcento
 - 1 scheda
 - 180 piante




Acero di monte

- *Xyleborus dispar*
 - SF Cividale del Friuli
 - 1 scheda
 - 150 piante




Castagno

- *Dryocosmus kuriphilus*
 - SF Moggio Udinese
 - 2 schede
 - 1,1 ettari



Frassino maggiore

- *Chalara fraxinea*
 - SF Maniago e Pinzano al Tagliamento
 - 2 schede
 - 0,25 ettari + 50 piante



Frassino maggiore

- *Tomostetus nigrinus*
 - SF Gemona del Friuli e Pinzano al Tagliamento
 - 2 schede
 - 20 ettari



Frassino Ossifillo

- *Tomostetus nigrinus*
 - SF Cividale del Friuli e Monfalcone
 - 2 schede
 - 530 piante



Frassino Ossifillo

- *Stereonychus fraxini*
 - SF Monfalcone
 - 1 scheda
 - 5 ettari





Olmo siberiano

- *Aproceros leucoposa*
 - SF Udine e Pinzano al Tagliamento
 - 3 schede
 - 200 piante



Ontano verde

- Deperimento dell'ontano
 - SF Forni di Sopra, Forni Avoltri e Barcis
 - 5 schede
 - 7.30 ettari



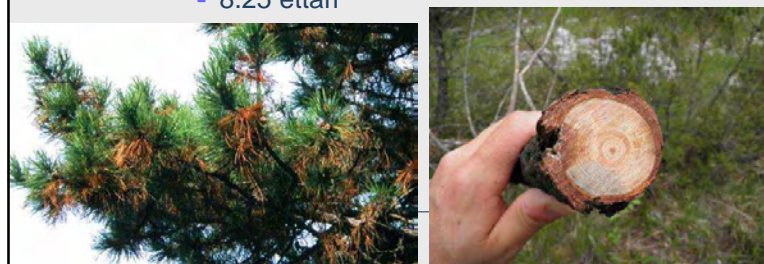
Ginepro comune


- *Gymnosporangium clavariaeforme*
 - SF Barcis
 - 1 scheda
 - 5 ettari




Pino nero

- *Diplodia pinea*
 - SF Monfalcone e Barcis
 - 2 schede
 - 8.25 ettari



 **Larice**

- *Coleophora laricella*
 - SF Ampezzo
 - 1 scheda
 - 30 ettari



 **Abete rosso**

- *Chrisomixa sp*
 - SF Ampezzo e Gemona del Friuli
 - 2 schede
 - 20 ettari



 **Abete rosso**

- *Heterobasidion annosum*
 - SF Forni Avoltri e Forni di Sopra
 - 5 schede
 - 240 metri cubi

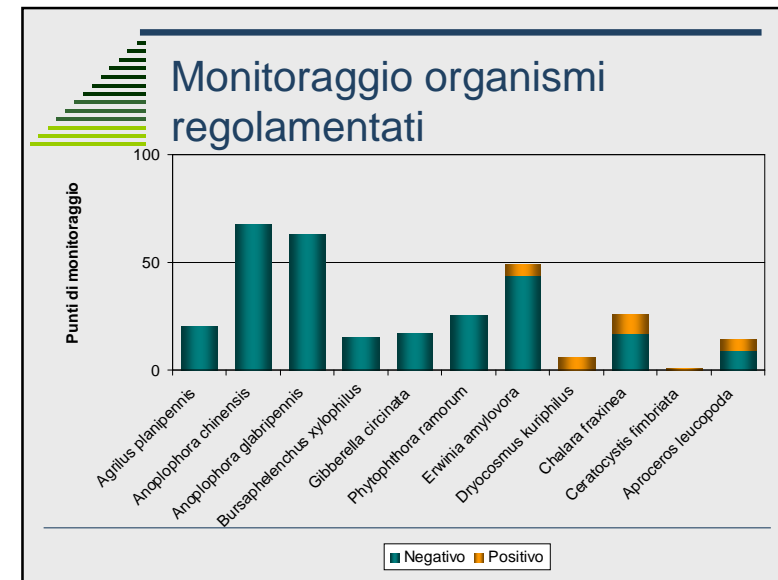
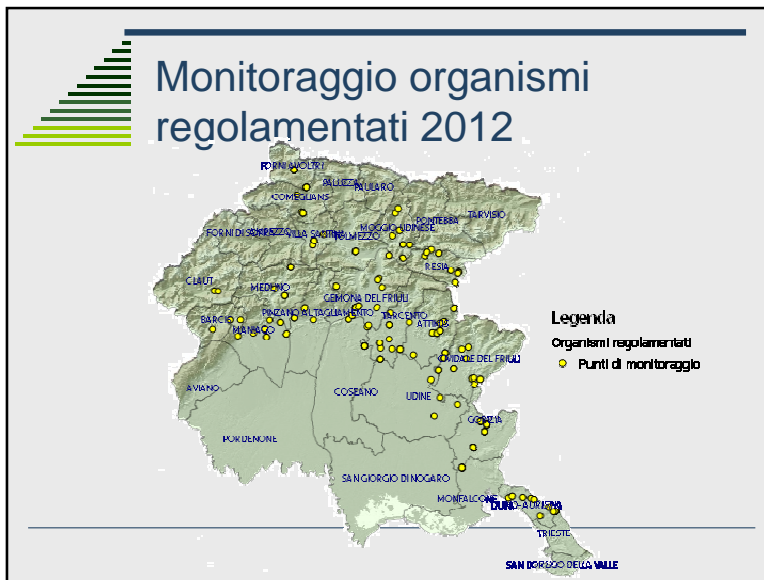
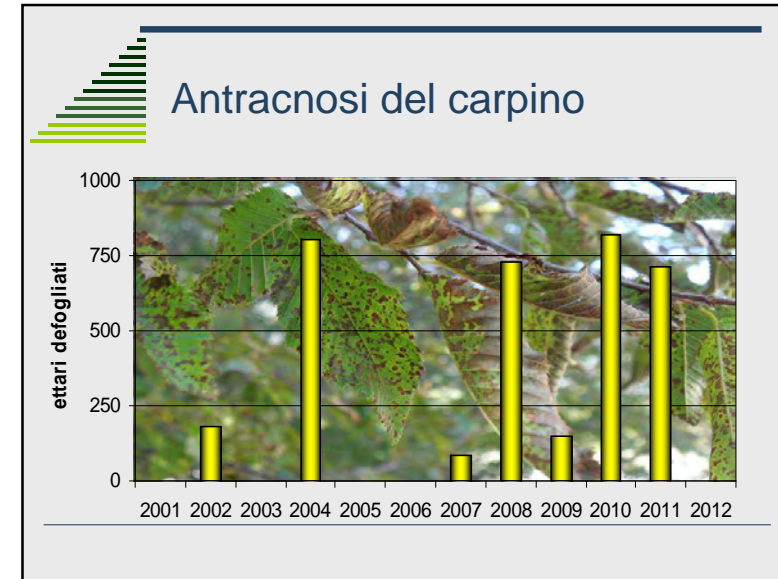
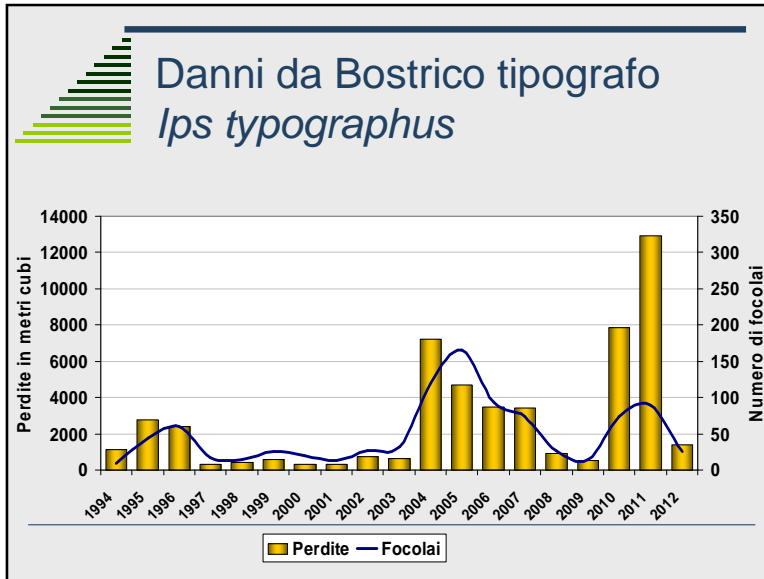


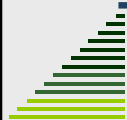
UGA1371038

 **Abete rosso**

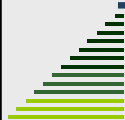
- *Ips typographus*
 - SF Ampezzo, Forni Avoltri, Barcis, Tarvisio CFS, Tarvisio CFS, Villa Santina, Pontebba, Paluzza
 - 26 schede
 - 1507 metri cubi



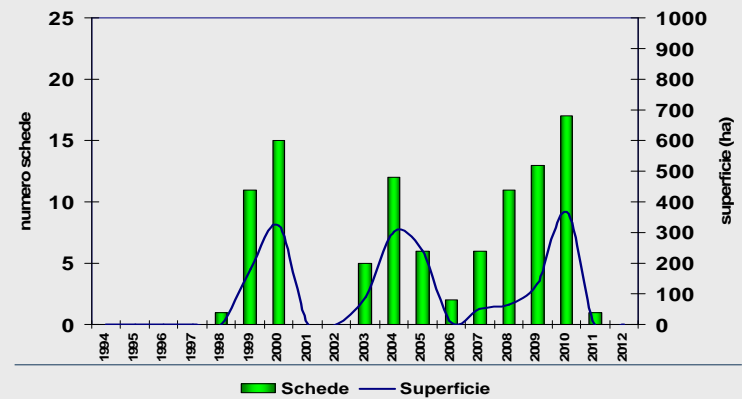




Processionaria del Pino *Thaumetopoea pityocampa*



Danni da processionaria



Monitoraggio

- *Ips typographus*



Previsioni: legenda

RISCHIO	Catture totali	Rapporto catture 2gen/1gen	Meteo piogge aprile-luglio	Danni per focolaio	Danni totali
BASSO	< 5000	< 0.62	0 - 25 %	< 50	< 500
MEDIO	5000-8000	0.62 - 1	26 - 50 %	50 - 100	500 - 1500
ALTO	> 8000	> 1	> 50 %	> 100	> 1500

in meno rispetto
periodo di riferimento

