



Bildatlas der Moose Deutschlands - Lüth (Hrsg.)

Faszikel 4

Funariales

Michael Lüth 2007

Bryophyta

Musci (Bryopsida)

Funariales

Disceliaceae, Ephemeraceae,

Funariaceae, Splachnaceae

| | |
|---------------|-------------|
| Discelium | Splachnum |
| Ephemerum | Tayloria |
| Micromitrium | Tetraplodon |
| Aphanorhegma | |
| Entosthodon | |
| Funaria | |
| Physcomitrium | |
| Pyramicula | |

Die Nomenklatur der Arten richtet sich nach der Referenzliste der Moose Deutschlands (KOPERSKI et al. 2000).

Wenn bei den Fundortsangaben kein Land und kein Bundesland angegeben ist, stammen die abgebildeten Pflanzen aus Deutschland, Baden-Württemberg. Zu allen dargestellten Abbildungen existieren Belege in den Herbarien der Autoren und in den Herbarien der genannten Entleiher.

Mein Dank gilt Dr. Matthias Ahrens, Ettlingen, Dr. Adam Hölzer, Staatliches Museum für Naturkunde Karlsruhe, Prof. Dr. Jan-Peter Frahm, Universität Bonn und Alfons Schäfer-Verwimp, Herdwangen-Schönach, für die Ausleihe von Moosbelegen.

KOPERSKI, M., SAUER M., BRAUN W. & GRADSTEIN S. R. 2000: Referenzliste der Moose Deutschlands. Dokumentation unterschiedlicher taxonomischer Auffassungen.- Schriftenreihe für Vegetationskunde, **34**, Bundesamt für Naturschutz, Bonn-Bad Godesberg.

Anschrift des Verfassers:

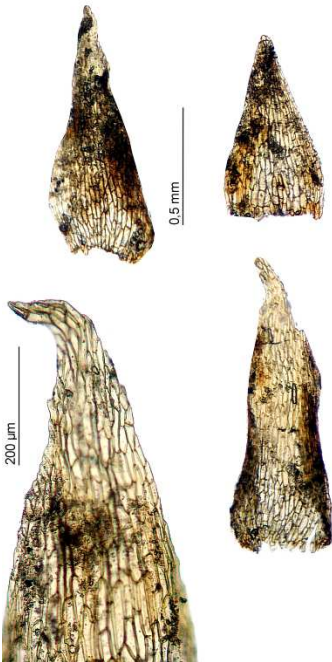
Michael Lüth, Emmendinger Str. 32, D-79106 Freiburg, mail@milueth.de

Bildatlas der Moose Deutschlands
M. Lüth (Hrsg.)
Eigenverlag
www.milueth.de

Faszikel 4
Funariales
Michael Lüth
Freiburg 2007

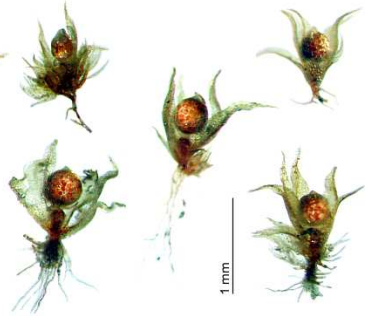
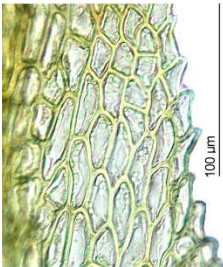
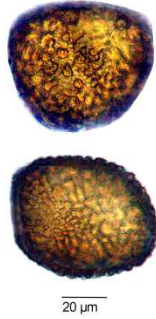
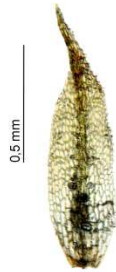
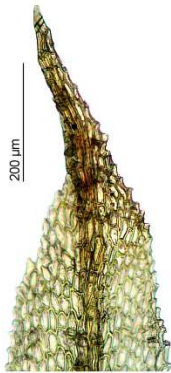
Discelium nudum (Dicks.) Brid.

Nordrhein-Westfalen, Grenzwald SW Kaldenkirchen, leg. J.-P. Frahm, 2002



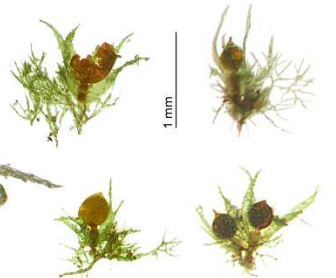
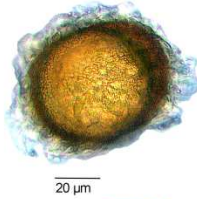
Ephemerum cohaerens (Hedw.) Hampe

Obertheinebene, Liedolsheim, leg. M. Ahrens, 1990



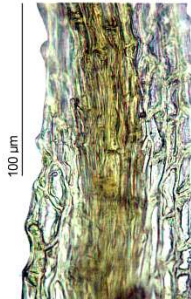
Ephemerum minutissimum Lindb.

Oberrheinebene, Norsingen, 2006



Ephemerum recurvifolium (Dicks.) Boulay

Kraichgau, Jöhligen, Hasensprung, leg. M. Ahrens 1995



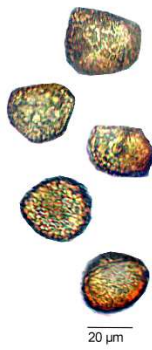
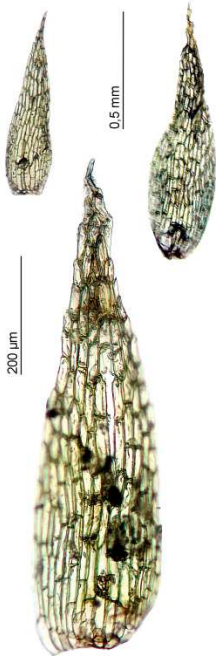
Ephemerum serratum (Hedw.) Hampe

Obertheinebene, Norsingen, 2006



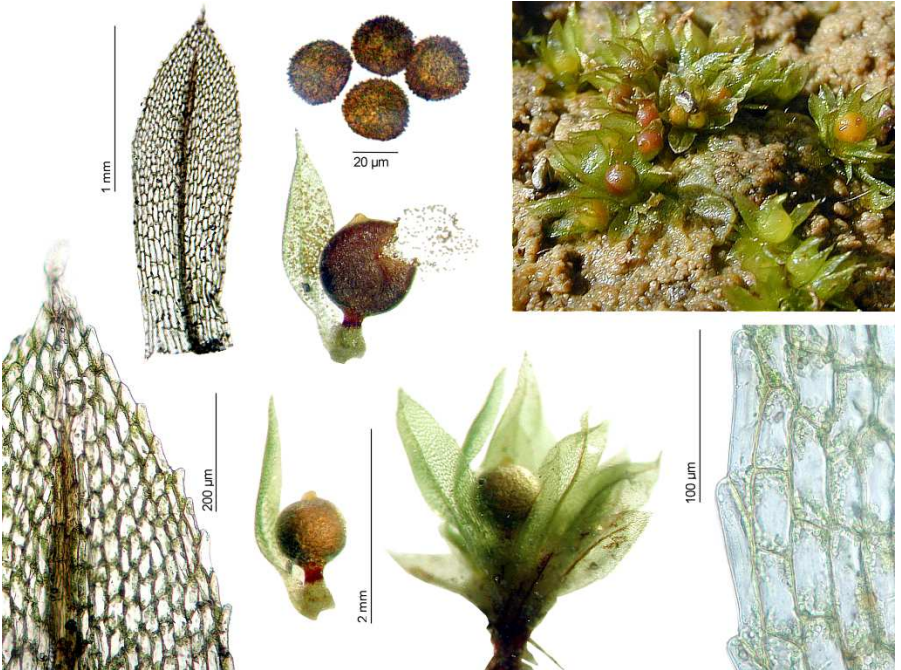
Micromitrium tenerum (Bruch & Schimp.) Crosby

Frankreich, Vogesen, Bremendehl E Sturzelbronn, leg. M. Ahrens 1990



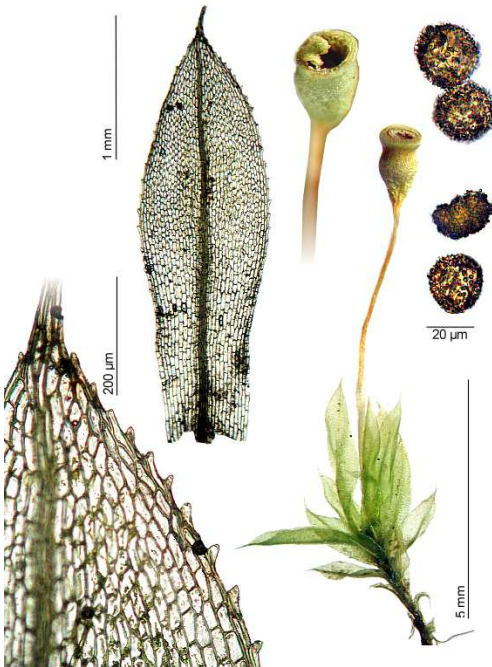
Aphanorhegma patens (Hedw.) Lindb.

Frankreich, Haute Saone, Villersexel, 2003



Entosthodon fascicularis (Hedw.) Müll. Hal.

Frankreich, Rhone-Alpes, Ardeche, 2006



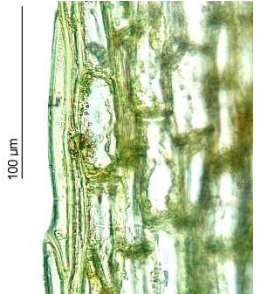
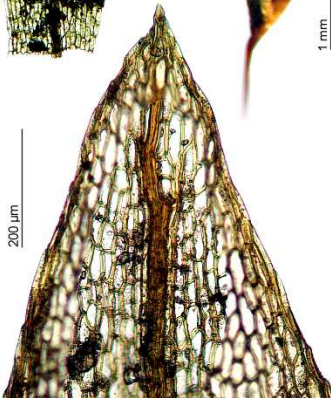
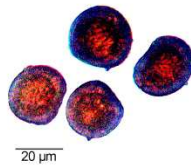
Entosthodon hungaricus (Boros) Loeske

Neckargebiet, Naher Berg bei Lauffen, leg. M. Ahrens 1995



Entosthodon obtusus (Hedw.) Lindb.

Frankreich, Bretagne, 2003

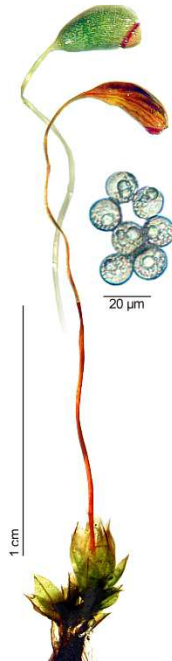
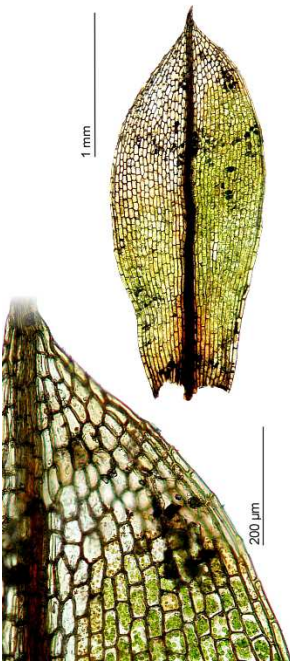


Funaria hygrometrica Hedw.

Freiburg, 2002



rechts unten: Frankreich, Provence, 2002

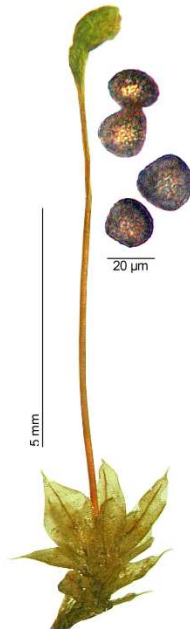
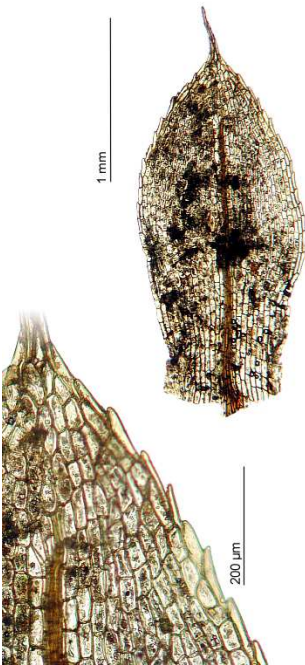


Funaria muhlenbergii Turner

Griechenland, Kreta, 2007



rechts oben: Frankreich, Eslas, Westthalen, 2001

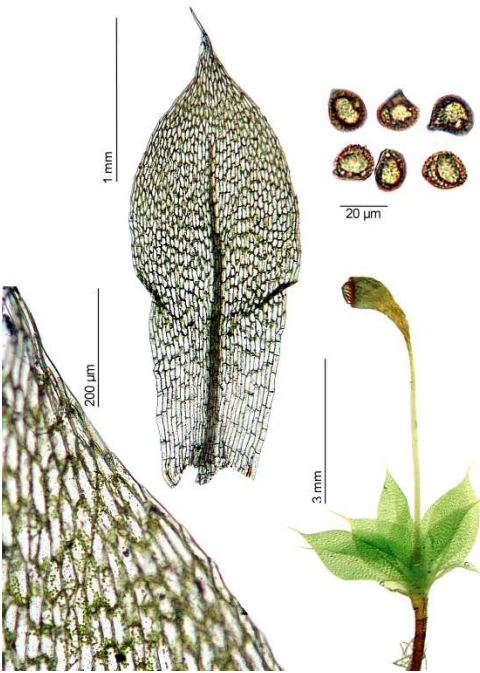


Funaria pulchella H. Philib.

Frankreich, Provence, 2006

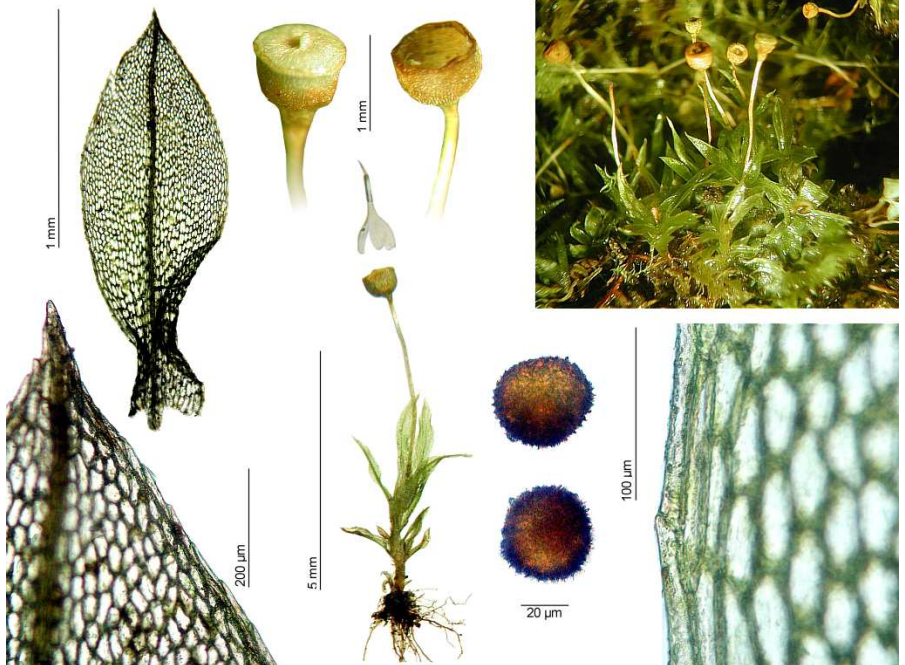


rechts oben: Griechenland, Kreta, Omalos, 2007



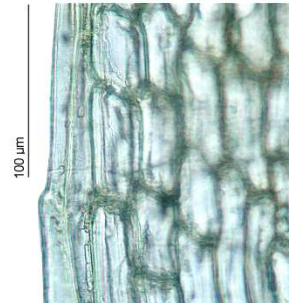
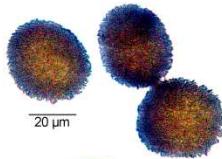
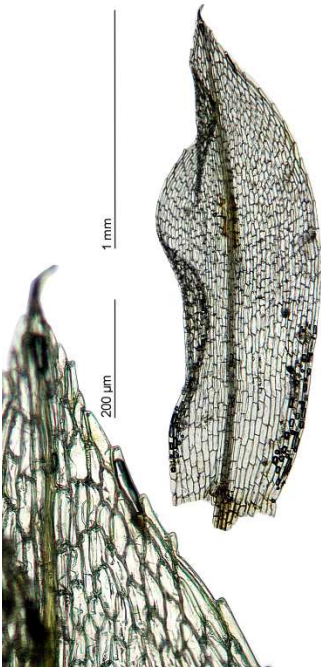
Physcomitrium eurystomum Sendtn.

Bodenseegebiet, Neukirch, leg. A. Schäfer-Verwimp, 2001



Physcomitrium pyriforme (Hedw.) Brid.

Freiburg, Gundelfingen, 2005



Physcomitrium sphaericum (C. F. Ludw.) Brid.

Frankreich, Sundgau, Vellescot, 2005



Pyramidula tetragona (Brid.) Brid.

Frankreich, Provence, Biot, 2002



Splachnum ampullaceum Hedw.

Schwarzwald, Schluchsee, 2004



rechts oben: Schwarzwald, Dachsberg, 1999



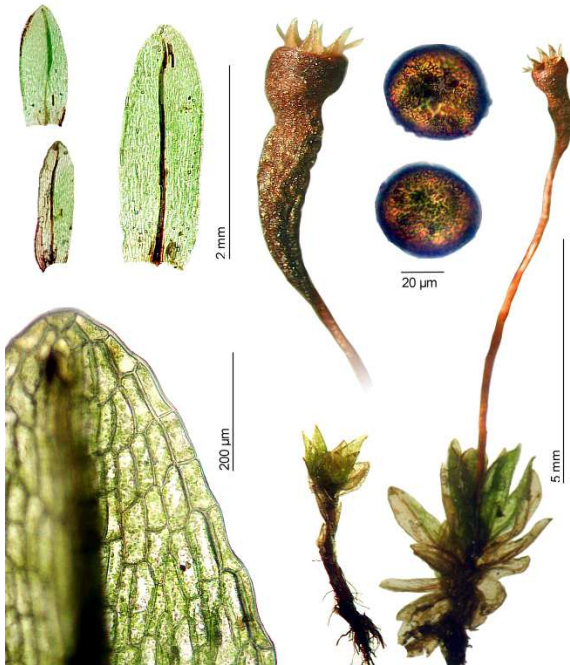
Splachnum sphaericum L. f. ex Hedw.

Österreich, Lechtaler Alpen, Freiburger Hütte, 2002



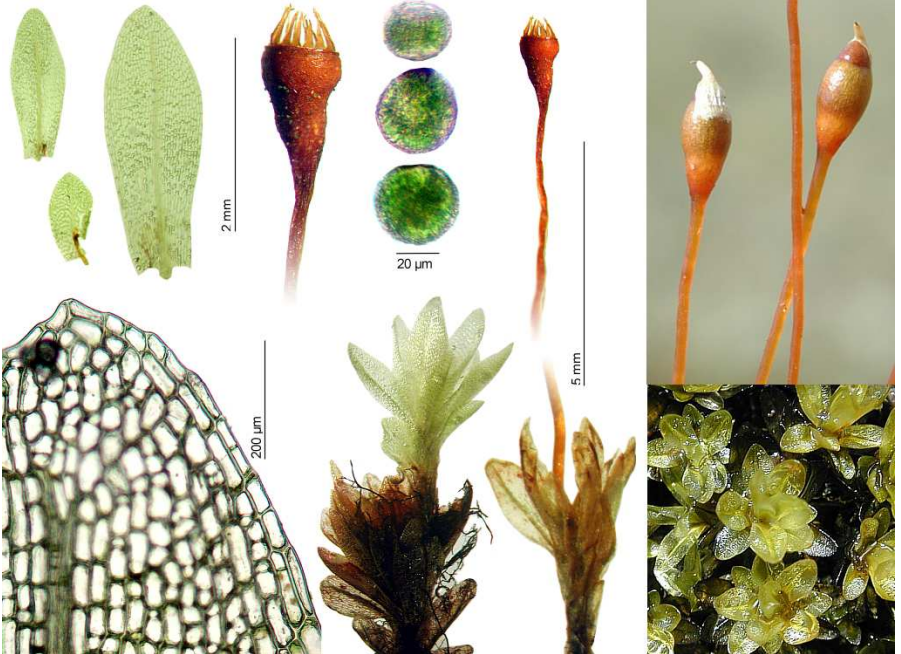
Tayloria froelichiana (Hedw.) Mitt. ex Broth.

Österreich, Tauern Nationalpark, Hochtor 2005



Tayloria lingulata (Dicks.) Lindb.

Norwegen, Dovrefjell, 2004



Tayloria rudolphiana (Garov.) Bruch & Schimp.

Schweiz, Meiringen, Schwarzwaldalp, 2006

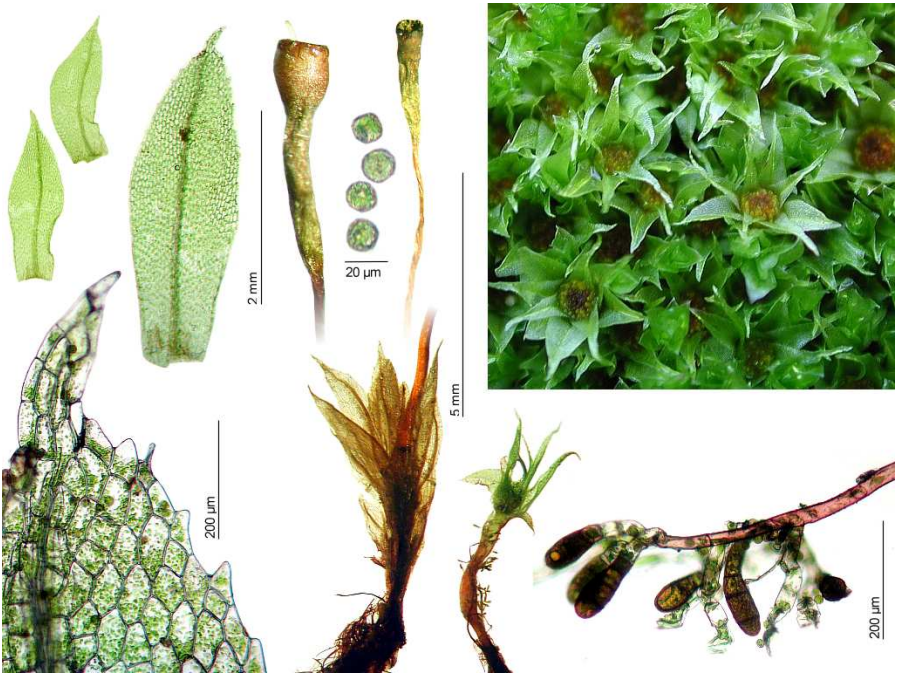


Tayloria serrata (Hedw.) Bruch & Schimp.

Schweiz, Sustenpass, 2006

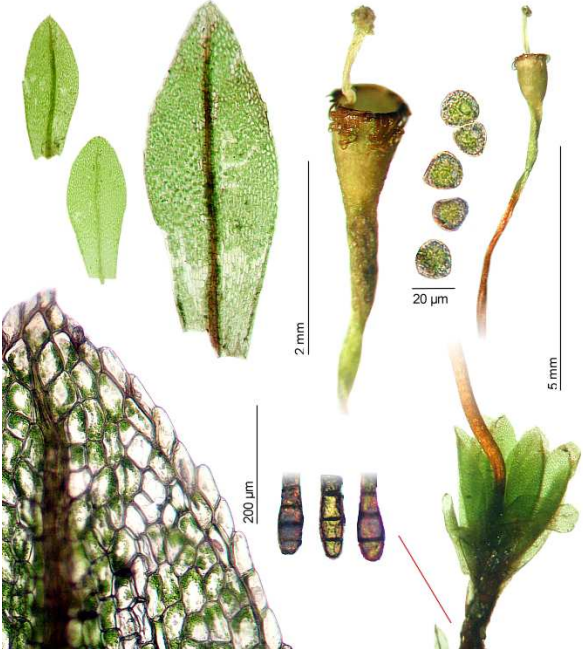


rechts oben: Österreich, Tauern Nationalpark, Hochtor, 2005



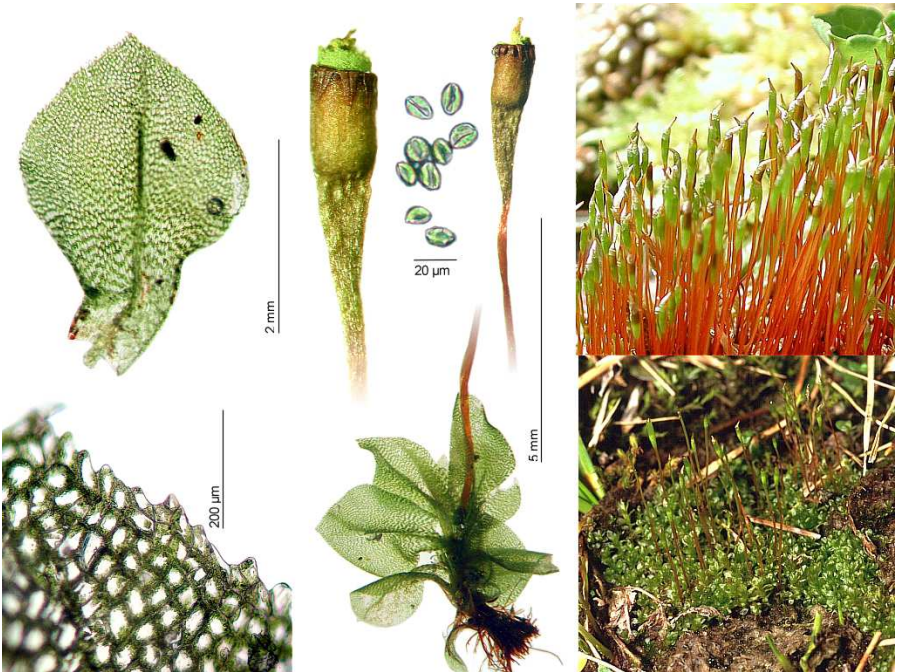
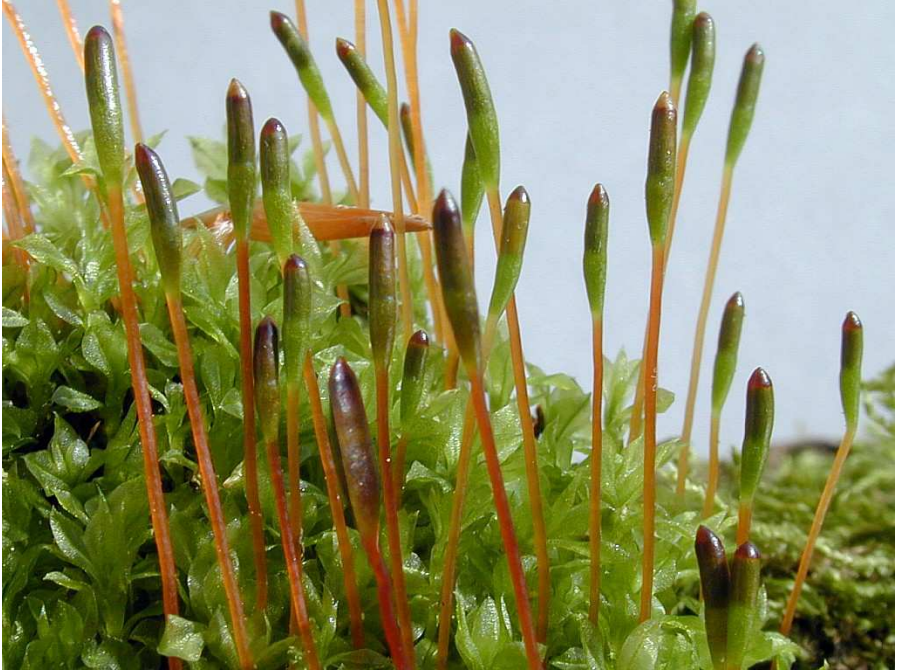
Tayloria splachnoides (Schwägr.) Hook.

Schweiz, Sustenpass, 2006



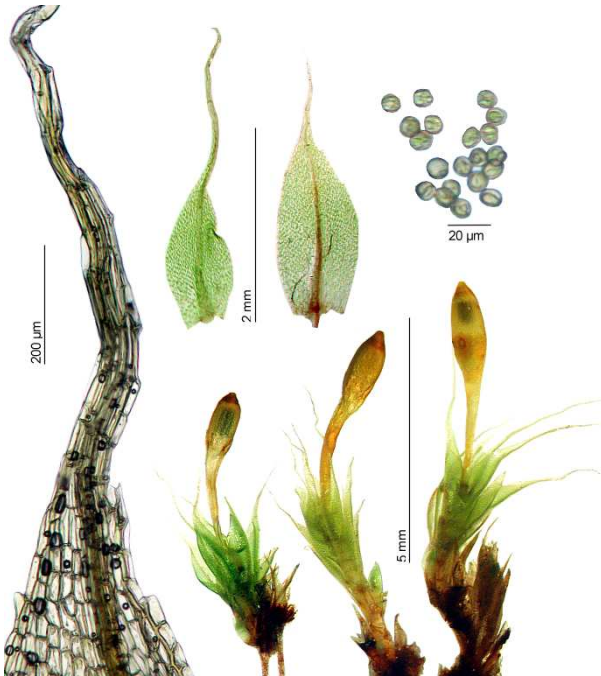
Tayloria tenuis (Dicks.) Schimp.

Schwarzarwald, Feldberg, 2002



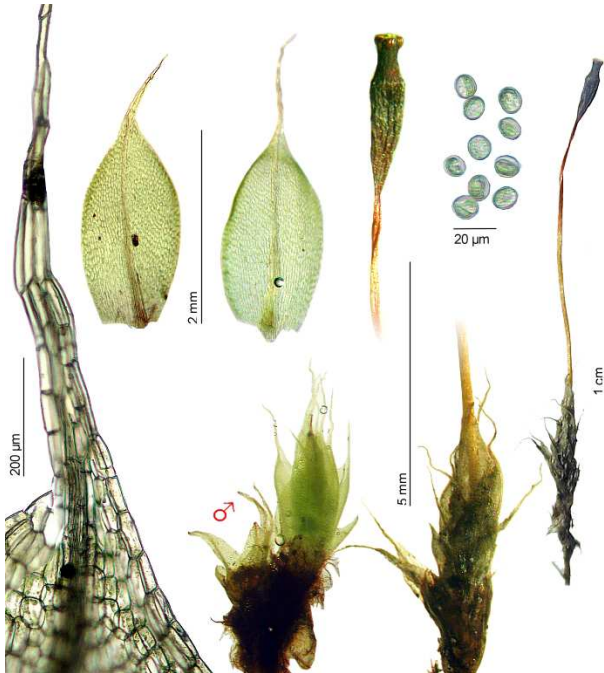
Tetraplodon angustatus (Hedw.) Bruch & Schimp.

Österreich, Lechtaler Alpen, Freiburger Hütte, 2002



Tetraplodon mnioides (Hedw.) Bruch & Schimp.

Norwegen, Dovrefjell, 2004



Tetraplodon urceolatus (Hedw.) Bruch & Schimp.

Österreich, Tauern Nationalpark, Hochtor, 2005

