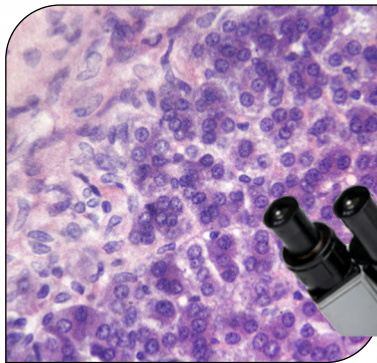


SCIENCE SLIDE SETS

2017 CATALOGUE



MEDICAL & SCIENCE MEDIA

Telephone: (02) 9675-7750 www.msmedia.com.au

Welcome to our Science Microscope Slide Sets PDF catalogue. Thank you for downloading the catalogue, we hope you find it useful. The prices in this catalogue do not include GST. Prices are in Australian dollars.

A Price List is included in this catalogue, but as you know they can change without notice, so we recommend you go to our web site at www.msmedia.com.au regularly to download the latest version.

CONTENTS

Botany Slide Sets.....	03 - 08
Plant Pathology Slide Sets.....	09 - 13
Comparative Histology Slide Sets.....	14 - 21
Genetics and Cytology Slide Sets.....	22 - 23
Ecology Slide Sets.....	24 - 27
Embryology Slide Sets.....	28 - 29
Miscellaneous Slide Sets.....	30 - 32
Zoology Slide Sets.....	33 - 39
PRICE LIST.....	40 - 41

MEDICAL & SCIENCE MEDIA

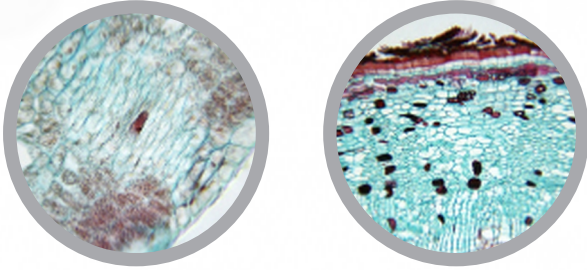
P.O Box 136, Mount Druitt N.S.W 2770 Australia
Telephone: (02) 9675-7750 Facsimile: (02) 9675-7702



All images in this catalogue are copyright, and cannot be used without permission.

BOTANY SLIDE SETS

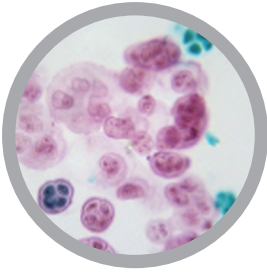
Cat #: CH-BOT1 - LEAF STEM AND ROOT SLIDE SET - 58 slides



- 1 - Leaf of *Nerium indicum* t.s. (show leaf of xerophyte)
- 2 - Water hyacinth petiole t.s. (show leaf of hydrophyte)
- 3 - Leaf of *Gossypium hirsutum* sec. (show abscission layer)
- 4 - Leaf of rapeseed margin sliced sec.
- 5 - Leaf venation w.m.
- 6 - Leaf of aloe t.s.
- 7 - Lower epidermis of dianthus leaf w.m.
- 8 - Leaf of camellia sec. (show ring pores)
- 9 - Lower epidermis of chinese cabbage w.m. (stoma)
- 10 - Leaf of ficus microcarpa t.s. (show cystolith)
- 11 - Upper epidermis of chrysanthemum leave w.m. (showing trichoma)
- 12 - Petiole of apium graveolens l.s.
- 13 - Cotton leaf flat leather w.m.
- 14 - Leaf of cycad t.s.
- 15 - Leaf of tea t.s.
- 16 - Leaf of potamogeton grass t.s.
- 17 - Heliophyte leave of oak t.s.
- 18 - Shade leave of oak t.s.
- 19 - Stem of monocotyledon t.s. (show closed bundle)(*Zea mays*)
- 20 - Stem of dicotyledon t.s. (show open bundle)(*Helianthus annuus*)
- 21 - Tip stem of hydrilla verticillata l.s. (show apical meristem)
- 22 - Stem of hydrilla verticillata t.s. (show aerating tissue)
- 23 - Old stem of ricinus communis t.s. (show cambium ring)
- 24 - Stem of oryza satira (geniculum) t.s. (show air cavity)
- 25 - Stem of zea mays t.s. (intergeniculum)
- 26 - Stem of triticum aestivum (geniculum)t.s.
- 27 - Stem apex of buxus sinica l.s. (apical bud)
- 28 - Young stem of tilia t.s. (show primary texture)
- 29 - Young stem of tilia t.s. (show primary structure)
- 30 - Mulberry bark t.s. (show lenticel)
- 31 - Bud of populus tomentosa l.s.
- 32 - Stem of pine t.s. (show resin duct)
- 33 - Stem of cedarwood sec. (showing bordered pit)
- 34 - Overground stem of moso bamboo t.s.
- 35 - Stem of club moss t.s. (show protosteles)
- 36 - Stem of herbaceous dicot t.s.
- 37 - Bark of privet t.s.
- 38 - Underground stem of pteris nervosa t.s.
- 39 - Prop root of *Zea mays* t.s. (show thickening endodermis)
- 40 - Root of *Vicia faba* l.s. (show formation of lateral root)
- 41 - Root nodule of *Vicia faba* sec.
- 42 - Plant root t.s. (showing Casparian dots)
- 43 - Young root of *Triticum aestivum* t.s.
- 44 - Old root of *Triticum aestivum* t.s.
- 45 - Root tip of *Triticum aestivum* l.s.
- 46 - Root tip of *Triticum aestivum* t.s.
- 47 - Young root of *Ranunculus japonicus* t.s. (hydrophilous)
- 48 - Young root of *Ranunculus japonicus* t.s. (xerophil)
- 49 - Old root of *Oryza sativa* t.s. (show air cavity)
- 50 - Mycorrhiza of orchid sec.
- 51 - Aerial root of bracket plant t.s.
- 52 - Climbing root of Chinese ivy
- 53 - Prop root of *Ficus microcarpa* t.s.
- 54 - Parasitic root of *Cuscuta chinensis* sec.
- 55 - Modified root of *Beta vulgaris* Linn t.s.
- 56 - Rhizome of celery l.s.
- 57 - Root of rhizoma nardostachyos t.s.
- 58 - Root of *Ipomoea aquatica* sec. (show storage tissue)

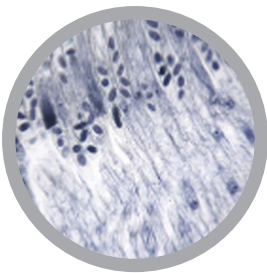
For slide set prices see [page 40](#). If you are interested in purchasing individual slides [CLICK HERE](#)

Cat #: CH-BOT2 - ALGAE SLIDE SET - 38 slides



- 1 - Chroococcus w.m.
- 2 - Microcystis w.m.
- 3 - Ocillatoria w.m.
- 4 - Spirulina w.m.
- 5 - Nostoc w.m. (hematoxylin staining)
- 6 - Anabaena w.m.
- 7 - Euglena w.m.
- 8 - Cyclotella w.m.
- 9 - Navicula w.m.
- 10 - Pennales w.m.
- 11 - Melosira w.m.
- 12 - Chlamydomonas w.m.
- 13 - Volvox w.m.
- 14 - Scenedesmus w.m.
- 15 - Ulothrix w.m.
- 16 - Cladophora w.m.
- 17 - Pandorina w.m.
- 18 - Pediatrura w.m.
- 19 - Micractinium w.m.
- 20 - Botryococcus w.m.
- 21 - Hydrodictyon w.m.
- 22 - Cosmarium w.m.
- 23 - Chlorella w.m.
- 24 - Conjugation of spirogyra w.m.
- 25 - Oedogonium w.m.
- 26 - Mougeotia w.m.
- 27 - Draparnaldia w.m.
- 28 - Zygnema w.m.
- 29 - Coelosphaerium w.m.
- 30 - Brachyblast of chara w.m.
- 31 - Top of chara l.s.
- 32 - Carpospore of porphyra w.m.
- 33 - Spermatangium of porphyra w.m.
- 34 - Porphyra t.s.
- 35 - Laminaria t.s. (show sporange)
- 36 - Undaria pinnatifida sec.
- 37 - Cladosiphon okamuranus w.m.
- 38 - Porphyridium w.m.

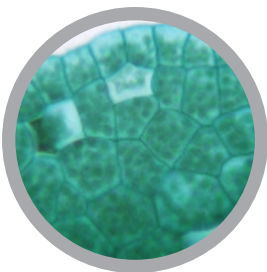
Cat #: JL-BOT3 - FUNGI AND LICHEN SLIDE SET - 20 slides



- 1 - Sporangium of Stemonitis w.m.
- 2 - Saprolegnia w.m.
- 3 - Rhizopus w.m.
- 4 - Saccharomyces w.m.
- 5 - Candida albicans smear
- 6 - Peziza l.s.
- 7 - Morchella sec.
- 8 - Aspergillus w.m.
- 9 - Agaricus sec.
- 10 - Tremella fuciformis sec.
- 11 - Ganoderma sec.
- 12 - Auricularia auricula sec.
- 13 - Ustilago maydis of corn w.m.
- 14 - Pileus of ganoderma lucidium l.s.
- 15 - Pileus of ganoderma lucidium t.s.
- 16 - Pileus of chinese ganoderma l.s.
- 17 - Heteromerous lichen sec.
- 18 - Lichen apothecium sec.
- 19 - Foliose lichen sec.
- 20 - Fruticose lichen

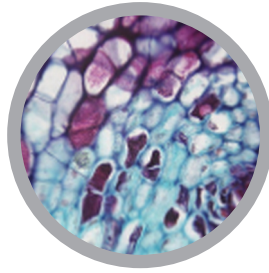
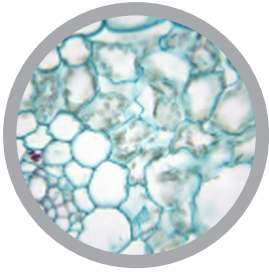
For slide set prices see [page 40](#). If you are interested in purchasing individual slides [CLICK HERE](#)

Cat #: JL-BOT4 - BRYOPHYTES AND PTERIDOPHYTES SLIDE SET - 36 slides



- 1 - Frond of marchantia sec.
- 2 - Cyphella of marchantia sec.
- 3 - Gemma of marchantia sec.
- 4 - Antheridiophore of marchantia l.s.
- 5 - Archegoniophore of marchantia l.s.
- 6 - Sporophyte of marchantia l.s.
- 7 - Funaria w.m.
- 8 - Blade of funaria w.m.
- 9 - Blade of funaria t.s.
- 10 - Stem of funaria t.s.
- 11 - Polliondium of funaria l.s.
- 12 - Archegonium of funaria l.s.
- 13 - Capsule of funaria l.s.
- 14 - Protonema of funaria w.m.
- 15 - Capsule of anthoceros t.s.
- 16 - Anthoceros w.m.
- 17 - Frond of anthoceros sec.
- 18 - Sporophyll spike of lycopodiopsida l.s.
- 19 - Macrosporangium of selaginella l.s.
- 20 - Microsporangium of selaginella l.s.
- 21 - Stem of selaginella t.s. (show polystele)
- 22 - Sporophyll of pteridium sec.
- 23 - Prothallium of pteridium w.m.
- 24 - Subterranean stem of pteridium t.s.
- 25 - Prothallium juvenile sporophyte of fern w.m.
- 26 - Stem of gleicheniaceae t.s. (showing protostele)
- 27 - Stem of psilotum t.s. (show stellatestele)
- 28 - Stem of lycopodium t.s. (show dicyostele)
- 29 - Stem of equisetum arvense t.s.
- 30 - Stem of equisetum arvense l.s.
- 31 - Strobilus of equisetum arvense l.s.
- 32 - Spore of equisetum arvense w.m. (showing elater)
- 33 - Leaf of cyrtomium fortunei sec.
- 34 - Sporocarp of salvinia sec.
- 35 - Sporocarp of azolla imbricata sec.
- 36 - Leaf of platycerium t.s.

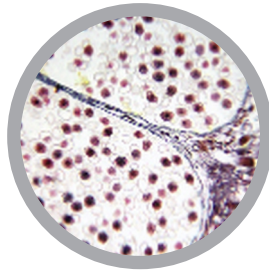
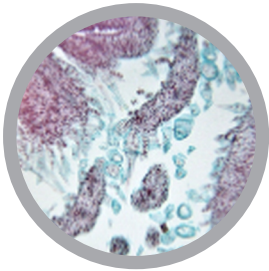
Cat #: JL-BOT5 - BOTANY - CELLS AND STRUCTURES SLIDE SET - 37 slides



- 1 - Epidermis cells of capsicum frutescens fruit w.m. (show simple pit-pair)
- 2 - Lower epidermis of apple w.m. (showing epidermal hair)
- 3 - Lower epidermis of pelargonium hortorum leaf w.m. (show glandular setae)
- 4 - Epidermis of mentha haplocalyx leaf w.m. (show glandular scale)
- 5 - Juglans regia shell w.m. (show stone cell)
- 6 - Zingiber officinale sec. (show secretory cells and laticiferous tube)
- 7 - Leaf of ficus microcarpa t.s. (show cystolith)
- 8 - Stem of pinus t.s. (show rosin duct)
- 9 - Peel of citrus reticulata sec. (show secretory cavity)
- 10 - Root of ipomoea aquatica sec. (show storage tissue)
- 11 - Stem of myriophyllum verticillatum t.s. (show aerating tissue)
- 12 - Leaf of nymphaea tetragona t.s. (show aerating tissue)
- 13 - Prop root of zea mays t.s. (show thickening endodermis)

- 14 - Root of vicia faba l.s. (show formation of lateral root)
- 15 - Young root of ranunculus japonicus t.s. (hydrophilous)
- 16 - Young root of ranunculus japonicus t.s. (xerophile)
- 17 - Old root of oryza sativa t.s. (show air cavity)
- 18 - Petiole of dahlia pinnata t.s. (show collenchyma)
- 19 - Stem macerated of vitis vinifera w.m. (show sclerenchyma)
- 20 - Root of allium sativum t.s. (show thickening endodermis)
- 21 - Root of taraxacum mongolicum l.s.. (show non-articulate latex duct)
- 22 - Tip Stem of hydrilla verticillata l.s. (show apical meristem)
- 23 - Stem of hydrilla verticillata t.s. (show aerating tissue)
- 24 - Stem of zea mays t.s. (intergeniculum)
- 25 - Young stem of gossypium hirsutum t.s. (show primary structure)
- 26 - Old stem of gossypium hirsutum t.s. (show secondary structure)
- 27 - Old stem of ricinus communis t.s. (show cambium ring)
- 28 - Vascular cambium of robinia pseudoacacia w.m. (show superposed)
- 29 - Vascular cambium of eucommia ulmoides w.m. (show non-superposed)
- 30 - Stem of club moss t.s. (show protostele)
- 31 - Monocotyledon and dicotyledon t.s.
- 32 - Old and young dicotyledon
- 33 - Leaf of nerium indicum t.s. (show leaf of xerophyte)
- 34 - Leaf of aloe vera var.chinensis (xerophyte) t.s.
- 35 - Leaf of water lily t.s. (show leaf of hydrophyte)
- 36 - Water hyacinth petiole t.s. (show leaf of hydrophyte)
- 37 - Leaf of Gossypium hirsutum sec. (show abscission layer)

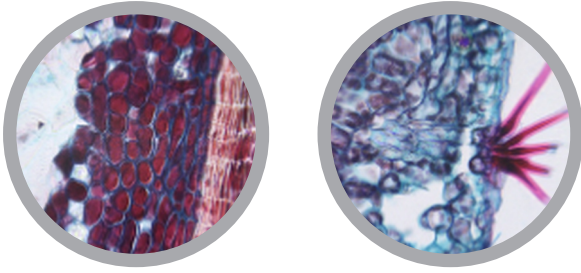
Cat #: JL-BOT6 - BOTANY - REPRODUCTION SLIDE SET - 39 slides



- 1 - Anther of lilium brownii var.viridulum t.s. (sporogenous stage)
- 2 - Anther of lilium brownii var.viridulum Baker t.s. (show tetrad)
- 3 - Ovary of lilium brownii var.viridulum t.s. (show ovule structure)
- 4 - Young embryo sac stage of lilium brownii var.viridulum ovary sec.
- 5 - Mature embryo sac stage of lilium brownii var.viridulum ovary sec.
- 6 - Stamen of calyxes t.s.
- 7 - Pollen of lily w.m. (2-celled pollen)
- 8 - Pollen germination w.m.
- 9 - Microstrobilus of pinus l.s. (male cone)
- 10 - Ovulatestrobilus of pinus l.s. (female cone)
- 11 - Peach blossom bud l.s.
- 12 - Sunflower flower l.s.

- 13 - Ovary of corn poppy t.s.
- 14 - Ovary of corn poppy l.s.
- 15 - Receptacle of syzygium aromaticum sec.
- 16 - Young anther of triticum aestivum t.s.
- 17 - Mature anther of triticum aestivum t.s.
- 18 - Flower of triticum aestivum w.m.
- 19 - Flower of triticum aestivum t.s.
- 20 - Stigma of triticum aestivum t.s.
- 21 - 2-cell stage of proembryo of capsella bursa-pastoris w.m.
- 22 - 4-cell stage of proembryo of capsella bursa-pastoris w.m.
- 23 - Globular embryo of capsella bursa-pastoris sec.
- 24 - Heart-shaped embryo of capsella bursa-pastoris sec.
- 25 - Torpedo stage embryo of capsella bursa-pastoris sec.
- 26 - Cane embryo of capsella bursa-pastoris sec.
- 27 - Mature embryo of capsella bursa-pastoris sec.
- 28 - Proembryo stage of capsella bursa-pastoris sec.
- 29 - Differentiation period of capsella bursa-pastoris embryo sec.
- 30 - Zoosporangium (Achlya cryzae)
- 31 - Chlamydo-spore (Fusarium oxysporum)
- 32 - Sporangium (Physoderma maydis)
- 33 - Oospore (Sclerospora graminicola)
- 34 - Ascus ascospore (Ascobolaceae sp.)
- 35 - Apothecium (Sclerotinia sclerotiorum)
- 36 - Conidia
- 37 - Sclerotium (Sunflower)
- 38 - Zygosperms (Mucor sp.)
- 39 - Basidium and basidiospore (Coprinus sp.)

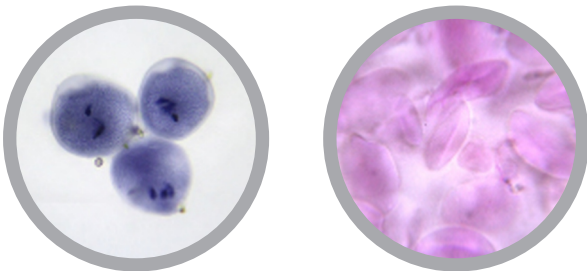
Cat #: JL-BOT7 - TREES SLIDE SET - 55 slides



- 1 - Root of *Quercus variabilis* t.s.
- 2 - Root of *Acer mono* t.s.
- 3 - Root of *Cephalotaxus fortunei* t.s.
- 4 - Annual stem of *Populus* t.s.
- 5 - Biennial stem of *Populus* t.s.
- 6 - 3-year stem of *Populus* t.s.
- 7 - Stem of African willow t.s.
- 8 - Stem of *Salix matsudana* t.s.
- 9 - Young Stem of Weeping willow t.s.
- 10 - Old Stem of Weeping willow t.s.
- 11 - Bud of *Populus tomentosa* l.s.
- 12 - Top bud of Poplar l.s.
- 13 - Top bud of Oak tree l.s.
- 14 - Stem of Masson pine t.s.
- 15 - Stem of Masson pine l.s.
- 16 - Stem of Masson pine sec.
- 17 - 3-Year Stem of Masson pine t.s.
- 18 - Stem of Maple t.s.
- 19 - Stem of Elm t.s.
- 20 - Heliophyte leaf of Oak t.s.
- 21 - Shade leaf of Oak t.s.
- 22 - Willow petioles abscission layer sec.

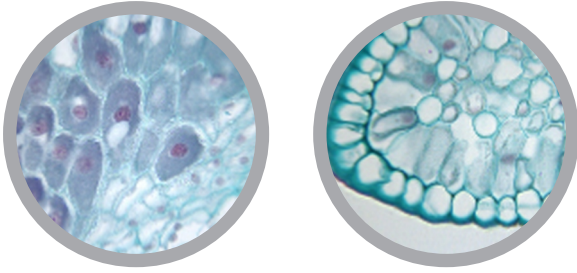
- 23 - Leaf of Maidenhair tree t.s.
- 24 - Leaf of Weeping willow t.s.
- 25 - Leaf of Dryland willow t.s.
- 26 - Leaf of Siberian elm t.s.
- 27 - Leaf of Maple t.s.
- 28 - Young stem of *Tilia* t.s. (show primary texture)
- 29 - Young stem of *Tilia* t.s. (show primary structure)
- 30 - Annual stem of *Tilia* t.s.
- 31 - Biennial stem of *Tilia* t.s.
- 32 - 3-year stem of *Tilia* t.s.
- 33 - Perennial stem of *Tilia* t.s.
- 34 - *Tilia* macerated w.m.
- 35 - Bark of *Quercus variabilis* sec.
- 36 - Xylem macerated of *Quercus variabilis* w.m.
- 37 - Stem of *Salix matsudana* t.s.
- 38 - Stem of Cedarwood sec. (showing bordered pit)
- 39 - Stem of Cedarwood t.s.
- 40 - Woody stem of Pine
- 41 - Young stem of Yew t.s.
- 42 - Stem of *Metasequoia* t.s.
- 43 - Stem of *Cephalotaxus fortunei* t.s.
- 44 - Stem of *Prunus davidiana* t.s.
- 45 - Stem of *Acer palmatum* t.s.
- 46 - Stem of Southern magnolia t.s.
- 47 - Stem of Magnolia t.s.
- 48 - Stem of Magnolia l.s.
- 49 - Stem of *Prunus mume* t.s.
- 50 - Leaf of Cedar t.s.
- 51 - Leaf of Magnolia t.s.
- 52 - Leaf of Ash t.s.
- 53 - Leaf of *Salix* t.s.
- 54 - Leaf of *Fraxinus* t.s.
- 55 - Magnolia flower l.s.

Cat #: JL-BOT8 - GRAINS SLIDE SET - 41 slides



- 1 - Lower Epidermis of *triticum aestivum* leaf w.m.
- 2 - Young root of *triticum aestivum* t.s.
- 3 - Old root of *triticum aestivum* t.s.
- 4 - Root tip of *triticum aestivum* l.s.
- 5 - Root tip of *triticum aestivum* t.s.
- 6 - Primary Stem of *triticum aestivum* t.s.
- 7 - Stem of *triticum aestivum* (geniculum) t.s.
- 8 - Caryopsis of *triticum aestivum* sec.
- 9 - Leaf of *triticum aestivum* t.s.
- 10 - Young anther of *triticum aestivum* t.s.
- 11 - Mature anther of *triticum aestivum* t.s.
- 12 - Flower of *triticum aestivum* w.m.
- 13 - Flower of *triticum aestivum* t.s.
- 14 - Stigma of *triticum aestivum* t.s.
- 15 - Pollen of *triticum aestivum* w.m.

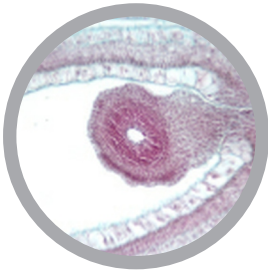
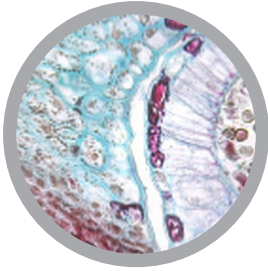
- 16 - Seed of *triticum aestivum* l.s.
- 17 - Bran of *triticum aestivum* w.m.
- 18 - Starch grain of *triticum aestivum* w.m.
- 19 - Metazoa proembryo of wheat sec.
- 20 - Pear shape proembryo of wheat sec.
- 21 - Differentiation period of wheat embryo sec.
- 22 - Maturity embryo of wheat sec.
- 23 - Lower Epidermis of *zea mays* leaf w.m.
- 24 - Stem of monocotyledon t.s. (show closed bundle)(*zea mays*)
- 25 - Seed of *zea mays* l.s.
- 26 - Root tip of *zea mays* l.s.
- 27 - Young root of *zea mays* t.s.
- 28 - Root of *zea mays* t.s.
- 29 - Prop root of *zea mays* t.s. (show thickening endodermis)
- 30 - Stem apex of *zea mays* l.s.
- 31 - Stem of *zea mays* l.s.
- 32 - Stem of *zea mays* t.s. (intergeniculum)
- 33 - Inter-calary meristem of *zea mays* l.s.
- 34 - Leaf of *zea mays* t.s.
- 35 - Starch grain of *zea mays* w.m.
- 36 - Root tip of *oryza sativa* l.s.
- 37 - Young root of *oryza sativa* t.s.
- 38 - Old root of *oryza sativa* t.s. (show air cavity)
- 39 - Stem of *oryza sativa* (geniculum) t.s. (show air cavity)
- 40 - Starch grain of *oryza sativa* w.m.
- 41 - Leaf of rice t.s.



- 1 - Stem tuber of *solanum tuberosum* sec.
- 2 - Stem of potato t.s.
- 3 - Stem of sweet potato t.s.
- 4 - Stem apex of sweet potato l.s.
- 5 - Leaf of potato t.s.
- 6 - Flower of potato l.s.
- 7 - Root of *daucus carota* var. *sativa* t.s.
- 8 - Modified root of *beta vulgaris* t.s.
- 9 - Epidermis of *allium cepa* w.m.
- 10 - Root tip of *allium cepa* l.s. (show mitotic division)
- 11 - Chromosome of *allium* w.m.
- 12 - Young root of *allium fistulosum* t.s.
- 13 - Root of *allium sativum* t.s. (show thickening endodermis)
- 14 - Root of *allium tuberosum* t.s.
- 15 - Root tip of *allium cepa* t.s.
- 16 - Root of *allium cepa* t.s.
- 17 - Onion bulb l.s.
- 18 - Petiole of *apium graveolens* l.s.
- 19 - Rhizome of celery l.s.
- 20 - Stem of celery t.s.
- 21 - Stem of *cucurbita moschata* t.s. (show tracheid)
- 22 - Stem of *cucurbita moschata* l.s.
- 23 - Stem macerated of *cucurbita moschata* w.m. (show trachea type)
- 24 - Old root of *cucurbita moschata* t.s.
- 25 - Young root of *cucurbita moschata* t.s.
- 26 - Pumpkin petiole t.s.
- 27 - Ovary of pumpkin t.s.
- 28 - Flower of cucumber l.s.
- 29 - Ovary of cucumber t.s.
- 30 - Root of eggplant t.s.
- 31 - Leaf of spinach t.s.
- 32 - Epidermis cells of *capsicum frutescens* fruit w.m. (show simple pit-pair)
- 33 - Stem of pepper t.s.
- 34 - Branched stellate hair of *brassica campestris* var. *oleifera* w.m.
- 35 - Flower bud of *brassica pekinensis* l.s.
- 36 - Flower bud of *brassica pekinensis* t.s.
- 37 - Flower of *brassica campestris* l.s.
- 38 - Flower of *brassica campestris* t.s.
- 39 - Stigma of *brassica campestris* var. *oleifera* l.s.
- 40 - Pollen of *brassica campestris* var. *oleifera* w.m.
- 41 - Lower Epidermis of chinese cabbage w.m. (stoma)
- 42 - Stem of cabbage t.s.
- 43 - Berry of *lycopersicon esculentum* sec.

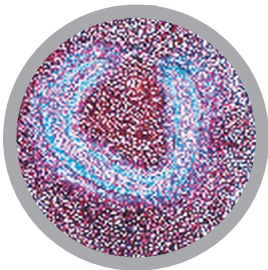
- 44 - Leaf of leek t.s.
- 45 - Lower epidermis of *vicia faba* leaf w.m.
- 46 - Root tip of *vicia faba* t.s.
- 47 - Root tip of *vicia faba* (show mitosis)
- 48 - Young root of *vicia faba* t.s.
- 49 - Old root of *vicia faba* t.s.
- 50 - Lateral root of *vicia faba* t.s.
- 51 - Root of *vicia faba* l.s. (show formation of lateral root)
- 52 - Root tip of *vicia faba* l.s. (hematoxylin staining)
- 53 - Root nodule of *vicia faba* sec.
- 54 - Young stem of *vicia faba* t.s.
- 55 - Old stem of *vicia faba* t.s.
- 56 - Leaf of *vicia faba* t.s.
- 57 - Seed of soybean l.s.
- 58 - Young root of soybean t.s.
- 59 - Old root of soybean t.s.
- 60 - Root of soybean t.s.
- 61 - Root of mung bean t.s.
- 62 - Root of pea t.s.
- 63 - Root tip of pea t.s.
- 64 - Root nodule of soybean sec.
- 65 - Stem of soybean t.s.
- 66 - Flower of pea l.s.

Cat #: JL-BOT10 - BOTANY - FRUITS SLIDE SET - 57 slides



- 1 - Lower epidermis of apple w.m. (showing epidermal hair)
- 2 - Young root of apple t.s.
- 3 - Old root of apple t.s.
- 4 - Bud of apple l.s.
- 5 - The top bud of pear l.s.
- 6 - Stem of pear t.s.
- 7 - Stem tip of pear l.s.
- 8 - Stem of malus spectabilis t.s.
- 9 - Stem of apple t.s.
- 10 - Stem of apple l.s.
- 11 - Apple petioles base t.s.
- 12 - Leaf of apple t.s.
- 13 - Leaf of pear t.s.
- 14 - Pollen of pear w.m.
- 15 - Flower of pear l.s.
- 16 - Flower of apple l.s.
- 17 - Stem macerated of vitis vinifera w.m. (show sclerenchyma)
- 18 - Root of vitis vinifera t.s.
- 19 - Young stem of grape t.s.
- 20 - Stem of grape t.s.
- 21 - Grape petiole t.s.
- 22 - Leaf of grapes t.s.
- 23 - Grape buds l.s.
- 24 - Fruit of grapes t.s.
- 25 - Stem of strawberry t.s.
- 26 - Fruit of strawberry l.s.
- 27 - Bark of mulberry macerated w.m.
- 28 - Stem of mulberry stem t.s. (show primary structure)
- 29 - Branch of mulberry t.s.
- 30 - Mulberry bark t.s. (show lenticel)
- 31 - Stem of bark of paper mulberry t.s.
- 32 - Leaf of mulberry t.s.
- 33 - Leaf of kiwi berry t.s.
- 34 - Leaf of mulberry t.s.
- 35 - Leaf of wolfberry (gogi berry) t.s.
- 36 - Ovary of mulberry l.s.
- 37 - Flower of elderberry l.s.
- 38 - Fruit of mulberry l.s.
- 39 - Old root of peach t.s.
- 40 - Bud of peach l.s.
- 41 - Bud of cherry l.s.
- 42 - Stem of peach t.s.
- 43 - Young stem of peach t.s.
- 44 - Stem of flowering peach t.s.
- 45 - Stem of cherry t.s.
- 46 - Peach petiole t.s.
- 47 - Leaf of peach t.s.
- 48 - Leaf of flowering peach t.s.
- 49 - Leaf of plum flower t.s.
- 50 - Leaf of cherry blossoms t.s.
- 51 - Leaf of cherry t.s.
- 52 - Leaf of petiole cherry nectary sec.
- 53 - Pollen of peach w.m.
- 54 - Peach blossom bud l.s.
- 55 - Flower of peach l.s.
- 56 - Fruit of peach l.s.
- 57 - Stem of apricot t.s.

Cat #: JL-25BM - ARRANGEMENTS AND TYPES OF VASCULAR BUNDLES SLIDE SET - 13 slides

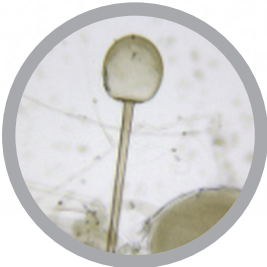
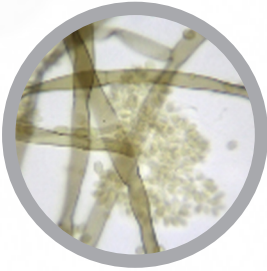


- 1 - Protostele. Psilotum, stem t.s.
- 2 - Actinostele. Lycopodium, stem t.s.
- 3 - Polystele. Pteridium, rhizome t.s. showing concentric vascular bundles with inner xylem
- 4 - Ectophloic siphonostele. Osmunda, rhizome t.s.
- 5 - Amphiphloic siphonostele. Adiantum, rhizome t.s.
- 6 - Dictyostele. Polypodium, rhizome t.s.
- 7 - Eustele. Ranunculus, stem t.s., open collateral bundles
- 8 - Eustele. Lamium, stem t.s.
- 9 - Eustele. Cucurbita pepo, stem t.s., bicollateral bundles
- 10 - Atactostele. Zea mays, stem t.s., closed collateral bundles
- 11 - Arrangement of bundles similar to atactostele in a dicot plant. Podophyllum, stem t.s.
- 12 - Concentric vascular bundles with outer xylem. Convallaria, rhizome t.s.
- 13 - Radial concentric vascular bundle. Ranunculus, root t.s.

For slide set prices see [page 40](#). If you are interested in purchasing individual slides [CLICK HERE](#)

PLANT PATHOLOGY SLIDE SETS

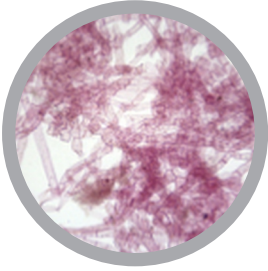
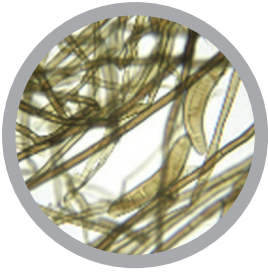
Cat #: JL-BPP1 - FUNGI AND FUNGI-LIKE PATHOGENS SLIDE SET - 66 slides



- 1 - Plasmodiophora brassicae
- 2 - Physoderma maydis
- 3 - Achlya oryzae
- 4 - Pythium aphanidermatum
- 5 - Phytophthora infestans
- 6 - Peronospora parasitica
- 7 - Pseudoperonospora cubensis
- 8 - Plasmopara viticola
- 9 - Bremia lactucae
- 10 - Albugo tragopogonis (Albugo candida)
- 11 - Mucor mucedo
- 12 - Rhizopus stolonifer
- 13 - Absidia capillata
- 14 - Taphrina deformans
- 15 - Blumeria graminis
- 16 - Phyllactinia corylea
- 17 - Microsphaera sp.
- 18 - Podosphaera tridactyla
- 19 - Ceratocystis fimbriata
- 20 - Gibberella zeae (asexual)
- 21 - Gaeumannomyces graminis
- 22 - Valsa mali
- 23 - Sclerotinia sclerotiorum
- 24 - Sphaerotheca fuliginea
- 25 - Uncinula verniciferae
- 26 - Phyllactinia populi
- 27 - Uromyces appendiculatus
- 28 - Puccinia graminis
- 29 - Gymnosporangium haraeaeum
- 30 - Phragmidium mucrona
- 31 - Melampsora coleosporioides
- 32 - Coleosporium zanthoxyli
- 33 - Ustilago maydis
- 34 - Sporisorium ehrenbergii
- 35 - Tilletia tritici
- 36 - Neovossia horrida
- 37 - Entyloma oryzae
- 38 - Urocystis tritici
- 39 - Trichoderma
- 40 - Nyssopsora cedrelae
- 41 - Archegonium (Chara zeylanica)
- 42 - Rhizoctonia solani
- 43 - Pyricularia oryzae
- 44 - Bipolaris maydis
- 45 - Verticillium dahliae
- 46 - Alternaria brassicae
- 47 - Cercospora cruenta
- 48 - Fusicladium pyrinum
- 49 - Botrytis cinerea
- 50 - Trichothecium roseum
- 51 - Penicillium italicum
- 52 - Mycovellosiella fulva
- 53 - Fusarium oxysporum
- 54 - Colletotrichum gloeosporioides
- 55 - Cytospora carposperma
- 56 - Septoria apiicola
- 57 - Coniothyrium diplodiella
- 58 - Phyllosticta
- 59 - Monilia fructigena
- 60 - Diplodia gossypina
- 61 - Exserohilum turcicum
- 62 - Ustilaginoidea oryzae
- 63 - Curvularia genicuata
- 64 - Ascochyta gossypii
- 65 - Marssonina coronaria
- 66 - Helminthosporium carposaprum

For slide set prices see [page 40](#). If you are interested in purchasing individual slides [CLICK HERE](#)

Cat #: JL-BPP2 - DISEASES OF CEREALS SLIDE SET - 44 slides



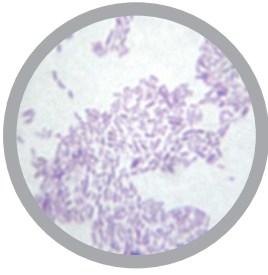
- 1 - *Piricularia oryzae* (asexual)
- 2 - *Helminthosporium oryzae* (asexual)
- 3 - *Xanthomonas oryzae*
- 4 - *Pellicularia sasakii* (asexual)
- 5 - *Bakanae* disease bacteria (*Fusarium moniliforme*)
- 6 - *Achlya* spp.
- 7 - *Entyloma oryzae* (sexual)
- 8 - *Neovossia horrida* (sexual)
- 9 - *Ustilaginoidea virens*(asexual)
- 10 - *Erwinia chrysanthemi*
- 11 - *Puccinia graminis tritici* (uredospore)
- 12 - *Puccinia graminis tritici* (teleutospore)
- 13 - *Blumeria graminis* (uredospore)
- 14 - *Blumeria graminis* (teleutospore)
- 15 - *Fusarium graminearum* (uredospore)
- 16 - *Fusarium graminearum* (teleutospore)
- 17 - *Ustilago tritici* (sexual)
- 18 - *Tilletia foetida* (sexual)
- 19 - *Urocystis tritici* (sexual)
- 20 - *Gaeumannomyces graminis* (sexual)
- 21 - *Bipolaris sorokinianum* (asexual)
- 22 - *Rhizoctonia cerealis* (asexual)
- 23 - *Heterodera avenae*
- 24 - *Anguina tritici*
- 25 - *Alternaria tenuis* (asexual)
- 26 - *Gerlachia nivalis*
- 27 - *Ustilago hordei* (sexual)
- 28 - *Pyrenophora graminea*
- 29 - *Exserohilum turcicum* (asexual)
- 30 - *Bipolaris maydis* (asexual)
- 31 - *Physoderma maydis* (asexual)
- 32 - *Ustilago maydis*
- 33 - *Sphacelotheca reiliana* (sexual)
- 34 - *Rhizoctonia solani* (asexual)
- 35 - *Curvularia lunata* (asexual)
- 36 - *Diplodia zeae* (asexual)
- 37 - *Erwinia carotovora* (Corn bacteria stem)
- 38 - *Puccinia sorghi* (uredospore)
- 39 - *Colletotrichum graminicolum* (asexual)
- 40 - *Sphacelotheca cruenta* (sexual)
- 41 - *Sphacelotheca sorghi* (sexual)
- 42 - *Sclerospora graminicola* (sexual)
- 43 - *Ustilago crameri* (sexual)
- 44 - *Aphelenchoides besseyi* (foxtail millet nematodes)

Cat #: JL-BPP3 - DISEASES OF OILY PLANTS SLIDE SET - 22 slides



- | | |
|---|---|
| <ol style="list-style-type: none"> 1 - <i>Cercospora arachidicola</i> (asexual) 2 - <i>Cercospora personata</i> (asexual) 3 - <i>Puccinia arachidis</i> (uredospore) 4 - <i>Diplodia</i> sp. (asexual) 5 - <i>Phoma arachidicola</i> (asexual) 6 - <i>Pseudomonas solanacearum</i> 7 - <i>Heterodera glycines</i> (female) 8 - <i>Colletotrichum glycines</i> (asexual) 9 - <i>Fusarium solani</i> 10 - <i>Fusarium graminearum</i> 11 - <i>Pseudomonas syringae</i> 12 - <i>Phomopsis sojae</i> (asexual) 13 - <i>Rhizoctonia solani</i> 14 - <i>Cuscuta chinensis</i> | <ol style="list-style-type: none"> 15 - <i>Sclerotinia sclerotiorum</i> 16 - <i>Peronospora parasitica</i> 17 - <i>Plasmiodiophora brassica</i> (asexual) 18 - <i>Macrophomina phaseoli</i> (asexual) 19 - <i>Fusarium oxysporum</i> 20 - <i>Erysiphe graminis</i> 21 - <i>Albugo candida</i> 22 - <i>Phytophthora nicotianae</i> |
|---|---|

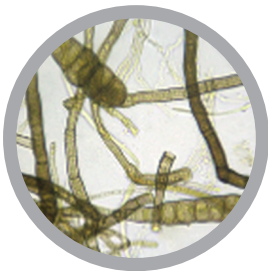
Cat #: JL-BPP4 - DISEASES OF FIBRE CROPS AND TOBACCO SLIDE SET - 23 slides



- | | |
|---|---|
| 1 - <i>Fusarium vasinfectum</i> (asexual) | 17 - <i>Phytophthora parasitica</i> (asexual) |
| 2 - <i>Verticillium dahliae</i> (asexual) | 18 - <i>Alternaria alternata</i> (asexual) |
| 3 - <i>Cephalothecium roseum</i> | 19 - <i>Pseudomonas syringae</i> |
| 4 - <i>Fusarium maniliforme</i> | 20 - <i>Pseudomonas angulata</i> |
| 5 - Cotton anthrax (asexual) | 21 - <i>Meloidogyne</i> spp. (female) |
| 6 - <i>Rhizoctonia solani</i> | 22 - <i>Colletotrichum nicotianae</i> (asexual) |
| 7 - <i>Diplodia gossypina</i> | 23 - <i>Erysiphe cichoracearum</i> (asexual) |
| 8 - <i>Alternaria panax</i> | |
| 9 - <i>Phytophthora boehmeriae</i> | |
| 10 - <i>Xanthomonas malvacearum</i> | |
| 11 - <i>Aspergillus</i> spp. | |
| 12 - <i>Ascochyta gossypii</i> | |
| 13 - <i>Colletotrichum corchori</i> | |
| 14 - <i>Fusarium oxysporum</i> | |
| 15 - <i>Pseudoperonospora cubensis</i> | |
| 16 - <i>Pratylenchus coffeae</i> (ramie) | |

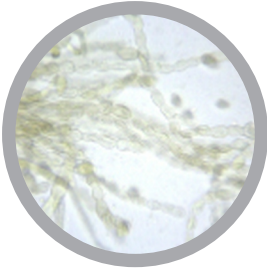
For slide set prices see [page 40](#). If you are interested in purchasing individual slides [CLICK HERE](#)

Cat #: JL-BPP5 - DISEASES OF VEGETABLES SLIDE SET - 55 slides



- | | |
|--|---|
| 1 - <i>Ophiostoma fimbriatum</i> (sexual) | 36 - <i>Pythium aphanidermatum</i> (asexual) |
| 2 - <i>Fusarium sulphureum</i> | 37 - <i>Uromyces appendiculatus</i> (teleutospore) |
| 3 - <i>Ditylenchus destructor</i> | 38 - <i>Uromyces appendiculatus</i> (uredospore) |
| 4 - <i>Meloidogyne incognita</i> | 39 - <i>Xanthomonas campestris</i> |
| 5 - <i>Phytophthora infestans</i> | 40 - <i>Fusarium oxysporum</i> |
| 6 - <i>Fusarium coeruleum</i> (asexual) | 41 - <i>Colletotrichum lindemuthianum</i> (asexual) |
| 7 - <i>Phytophthora parasitica</i> | 42 - <i>Fusarium solani</i> |
| 8 - <i>Peronospora destructor</i> | 43 - <i>Septoria apiicola</i> (asexual) |
| 9 - <i>Colletotrichum circinans</i> | 44 - <i>Alternaria porri</i> (asexual) |
| 10 - <i>Pleospora herbarum</i> | 45 - <i>Albugo bliti</i> |
| 11 - <i>Penicillium italicum</i> | 46 - <i>Albugo candida</i> |
| 12 - <i>Puccinia allii</i> | 47 - <i>Erysiphe graminis</i> |
| 13 - <i>Erwinia carotovora</i> | 48 - <i>Peronospora effusa</i> (asexual) |
| 14 - <i>Fulvia fulva</i> | 49 - <i>Bremia lactucae</i> (asexual) |
| 15 - <i>Cercospora fuligena</i> | 50 - <i>Botrytis cinerea</i> |
| 16 - <i>Helminthosporium carposaprum</i> | 51 - <i>Botrytis squamosa</i> |
| 17 - <i>Septoria lycopersici</i> | 52 - <i>Peronospora parasitica</i> |
| 18 - <i>Alternaria solani</i> | 53 - <i>Plasmiodiophora brassicae</i> |
| 19 - <i>Pseudomonas solanacearum</i> | 54 - <i>Alternaria brassicae</i> |
| 20 - <i>Phomopsis vexans</i> (asexual) | 55 - <i>Sclerotinia sclerotiorum</i> |
| 21 - <i>Phytophthora parasitica</i> (asexual) | |
| 22 - <i>Verticillium dahliae</i> | |
| 23 - <i>Colletotrichum capsici</i> (asexual) | |
| 24 - <i>Phytophthora capsici</i> (asexual) | |
| 25 - <i>Alternaria alternata</i> | |
| 26 - <i>Rhizoctonia solani</i> (asexual) | |
| 27 - <i>Erysiphe cichoracearum</i> | |
| 28 - <i>Pythium aphanidermatum</i> | |
| 29 - <i>Phytophthora melonis</i> | |
| 30 - <i>Mycosphaerella melonis</i> | |
| 31 - <i>Pseudoperonospora cubensis</i> (asexual) | |
| 32 - <i>Corynespora cassiicola</i> (asexual) | |
| 33 - <i>Pseudomonas syringae</i> | |
| 34 - <i>Meloidogyne incognita</i> | |
| 35 - <i>Colletotrichum lugenarium</i> | |

Cat #: JL-BPP6 - DISEASES OF FRUITS SLIDE SET - 38 slides



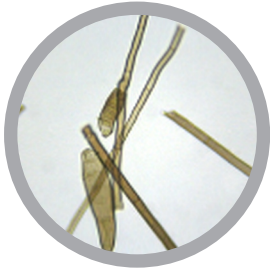
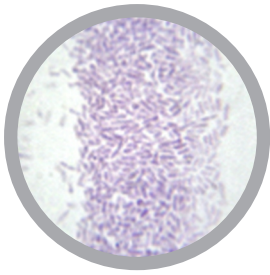
- 1 - *Cytospora* sp.
- 2 - *Valsa mali*
- 3 - *Botryosphaeria ribis*
- 4 - *Botryosphaeria berengerianade*
- 5 - *Macrophoma kawatsukai*
- 6 - *Alternaria mali*
- 7 - *Alternaria alternata*
- 8 - *Alternaria kikuchiana*
- 9 - *Gloeosporium fructigena*
- 10 - *Gloeosporium laticolor*
- 11 - *Gloeosporium kaki*
- 12 - *Marssonina coronaria*
- 13 - *Gymnosporangium yamadai*
- 14 - *Phomopsis mali*
- 15 - *Phomopsis fukushii*
- 16 - *Podosphaera leucotricha* (asexual)
- 17 - *Podosphaera xanthii* (sexual)
- 18 - *Podosphaera leucotricha* (sexual)
- 19 - *Physalospora piricola* (asexual)
- 20 - *Gymnosporangium yamadai* (aecidiospore)
- 21 - *Gymnosporangium harae*
- 22 - *Venturia pirina*
- 23 - *Monilinia fructigena*
- 24 - *Monilinia fructicola*
- 25 - *Taphrina deformans*
- 26 - *Rhizopus stolonifer*
- 27 - *Polystigma deformans*
- 28 - *Monilia cinerea*
- 29 - *Coniothyrium dipbdiella*
- 30 - *Plasmopara viticola*
- 31 - *Pseudocercospora vitis*
- 32 - *Pratylenchus filijev*
- 33 - *Uncinula necator*
- 34 - *Phakopsora zizyphi-vulgaris*
- 35 - *Dothiorella gregaria*
- 36 - *Colletotrichum gloeosporioies*
- 37 - *Botrytis cinerea*
- 38 - *Penicillium italicum*

For slide set prices see [page 40](#). If you are interested in purchasing individual slides [CLICK HERE](#)

Cat #: JL-BPP8 - NEMATODES AND PLANT PESTS SLIDE SET - 30 slides



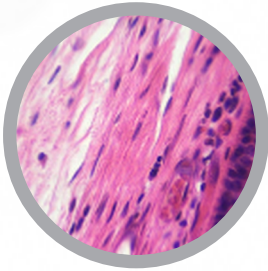
- 1 - *Anguina tritici*
- 2 - *Aphelenchoides besseyi* (foxtail millet nematodes)
- 3 - *Ditylenchus destructor* (sweet potato)
- 4 - *Heterodera avenae*
- 5 - *Heterodera glycines* (female)
- 6 - *Meloidogyne incognita* (sweet potato)
- 7 - *Pratylenchus filijev*
- 8 - *Pratylenchus coffeae* (ramie)
- 9 - *Tetranychus telarius* w.m.
- 10 - *Petrobia latens* w.m.
- 11 - *Penthaleus major* w.m.
- 12 - *Tetranychus cinnabarinus* w.m.
- 13 - *Tetranychus viennensis* w.m.
- 14 - *Parabemisia myricae* (kawana) w.m.
- 15 - *Aphis gossypii* w.m.
- 16 - *Macrosiphum granarium* w.m.
- 17 - *Toxoptera graminum* w.m.
- 18 - *Rhopalosiphum* w.m.
- 19 - Alate aphid of *Macrosiphum granarium* w.m.
- 20 - Wingless aphid of *Macrosiphum granarium* w.m.
- 21 - *Myzus persicae* w.m.
- 22 - *Aphis glycines* w.m.
- 23 - *Aphis medicaginis* w.m.
- 24 - *Eriosoma lanigerum* w.m.
- 25 - *Toxoptera piricola* w.m.
- 26 - *Hyalopterus amygdali* w.m.
- 27 - *Myzus momonis* w.m.
- 28 - *Myzus persicae* w.m.
- 29 - *Aphis laburni* w.m.
- 30 - *Aphis pomi* w.m.



- 1 - Absidia capillata
- 2 - Mucor mucedo
- 3 - Aspergillus spp. (cotton)
- 4 - Penicillium italicum
- 5 - Bipolaris sorokiniana (asexual)
- 6 - Pyrenophora graminea
- 7 - Ustilaginoidea virens (asexual)
- 8 - Curvularia geniculata
- 9 - Curvularia lunata (asexual)
- 10 - Entyloma (Entyloma oryzae)
- 11 - Neovossia (Neovossia horrida)
- 12 - Tilletia foetida (sexual)
- 13 - Pellicularia sasakii (asexual)
- 14 - Rhizoctonia cerealis (asexual)
- 15 - Rhizoctonia solani (asexual)
- 16 - Physoderma maydis
- 17 - Plasmodiophora brassicae
- 18 - Puccinia arachidis (uredospore)
- 19 - Puccinia sorghi (uredospore)
- 20 - Uromyces appendiculatus (teleutospore)
- 21 - Rhizopus stolonifer
- 22 - Sphacelotheca reiliana (sexual)
- 23 - Taphrina deformans
- 24 - Achlya oryzae
- 25 - Albugo bliti
- 26 - Peronospora parasitica
- 27 - Phytophthora boehmeriae (cotton)
- 28 - Pseudoperonospora cubensis (asexual)
- 29 - Pythium aphanidermatum
- 30 - Sclerospora graminicola (sexual)
- 31 - Bremia lactucae (asexual)
- 32 - Plasmopara viticola
- 33 - Alternaria alternata
- 34 - Ascochyta gossypii
- 35 - Bipolaris maydis (asexual)
- 36 - Botryosphaeria berengeriana
- 37 - Cercospora personata (asexual)
- 38 - Corynespora cassiicola (asexual)
- 39 - Diplodia gossypina
- 40 - Septoria lycopersici (tomato)
- 41 - Fulvia fulva (tomato)
- 42 - Dothiorella gregaria
- 43 - Exserohilum turcicum
- 44 - Fusicladium pyrinum
- 45 - Helminthosporium carposaprum (tomato)
- 46 - Macrophomina phaseoli (asexual)
- 47 - Mycosphaerella melonis
- 48 - Phoma arachidicola (asexual)
- 49 - Phyllosticta
- 50 - Pleospora herbarum (garlic)
- 51 - Pseudocercospora vitis
- 52 - Septoria apiicola (asexual)
- 53 - Venturia pirina
- 54 - Botrytis cinerea
- 55 - Erysiphe cichoracearum (asexual)
- 56 - Gloeosporium laeticolor
- 57 - Marssonina coronaria
- 58 - Microsphaera sp.
- 59 - Monilia cinerea
- 60 - Monilinia fructigena
- 61 - Apple trees (Podospaera xanthii sexual)
- 62 - Phyllactinia populi
- 63 - Sclerotinia sclerotiorum
- 64 - Sphaerotheca fuliginea
- 65 - Uncinula necator
- 66 - Cephalothecium roseum (cotton)
- 67 - Ceratocystis (Ceratocystis fimbriata)
- 68 - Colletotrichum capsici (asexual)
- 69 - Coniothyrium diploidiella
- 70 - Cytospora carphosperma
- 71 - Fusarium vasinfectum (asexual)
- 72 - Gaeumannomyces (Gaeumannomyces graminis)
- 73 - Gerlachia nivalis
- 74 - Ophiostoma fimbriatum (sexual)
- 75 - Phomopsis fukushii
- 76 - Physalospora piricola (asexual)
- 77 - Piricularia oryzae (asexual)
- 78 - Polystigma deformans
- 79 - Pyricularia (Pyricularia oryzae)
- 80 - Trichoderma
- 81 - Trichothecium roseum
- 82 - Valsa mali
- 83 - Verticillium dahliae
- 84 - Coleosporium zanthoxyli
- 85 - Gymnosporangium haraeaeum
- 86 - Melampsora coleosporioides
- 87 - Nyssopsora cedrelae
- 88 - Phakopsora zizyphi-vulgaris
- 89 - Phragmidium mucrona
- 90 - Puccinia allii
- 91 - Sporisorium ehrenbergii
- 92 - Sphacelotheca cruenta (sexual)
- 93 - Tilletia tritici
- 94 - Urocystis (Urocystis tritici)
- 95 - Erwinia carotovora (celery)
- 96 - Pseudomonas syringae
- 97 - Xanthomonas campestris
- 98 - Anguina tritici
- 99 - Aphelenchoides besseyi (foxtail millet nematodes)
- 100 - Ditylenchus destructor (sweet potato)
- 101 - Heterodera avenae
- 102 - Heterodera glycines (female)
- 103 - Meloidogyne incognita (sweet potato)
- 104 - Pratylenchus filijev
- 105 - Pratylenchus coffeae (ramie)

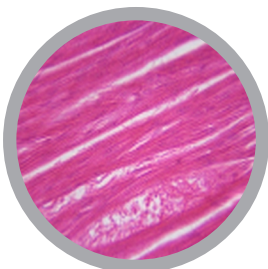
COMPARATIVE HISTOLOGY SLIDE SETS

Cat #: CH-COMP1 - COMPARATIVE EPITHELIUM & CONNECTIVE TISSUE SLIDE SET - 28 slides



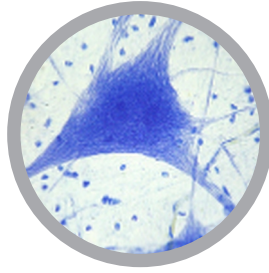
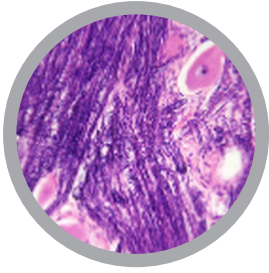
- 1 - Surface of Simple squamous epithelium (silver staining)
- 2 - Simple squamous epithelium sec.
- 3 - Pseudostratified columnar ciliated epithelium sec.
- 4 - Transitional epithelium (vesica urinaria relaxing) sec.
- 5 - Transitional epithelium (vesica urinaria dilating) sec.
- 6 - Simple cuboidal epithelium sec.
- 7 - Stratified squamous epithelium sec.
- 8 - Stratified columnar epithelium sec.
- 9 - Simple columnar ciliated epithelium sec.
- 10 - Simple columnar epithelium of human sec.
- 11 - Simple cuboidal epithelium of human sec.
- 12 - Pseudostratified ciliated columnar epithelium of human sec.
- 13 - Simple columnar ciliated epithelium of human sec.
- 14 - Stratified squamous epithelium of human sec.
- 15 - Epithelium cells of cavitas oris of human w.m.
- 16 - Hypodermal tissue of cervical of guinea pig
- 17 - Loose connective tissue w.m.
- 18 - Dense connective tissue sec.
- 19 - Fat tissue sec.
- 20 - Lymph node reticular tissue sec.
- 21 - Ligamentum nuchae of bull l.s.
- 22 - Tail tendon of cat l.s.
- 23 - Loose connective tissue of human sec.
- 24 - Adipose tissue of human sec.
- 25 - Hyaline cartilage of human sec.
- 26 - Fibrous cartilage of human sec.
- 27 - Epiglottic cartilage of human sagittal section
- 28 - Elastic cartilage of human sec.

Cat #: CH-COMP2 - COMPARATIVE MUSCULAR & SKELETAL TISSUE SLIDE SET - 18 slides



- 1 - Dog cardiac muscle sec. (hematoxylin staining)
- 2 - Cardiac muscle of cat sec. (hematoxylin staining)
- 3 - Skeletal muscle of cat l.s. and t.s. (hematoxylin staining)
- 4 - Smooth muscle isolated of human sec.
- 5 - Skeletal muscle of human t.s. and l.s. (H&E)
- 6 - Skeletal muscle isolated of human w.m.
- 7 - Cardiac muscle of human sec. (H&E)
- 8 - Muscle of grasshopper t.s. and l.s.
- 9 - Smooth muscle of stomach of cat sec.
- 10 - Intramembranous ossification sec.
- 11 - Hard bone of bull t.s. (thionin-picric acid staining)
- 12 - Hard bone of bull l.s. (thionin-picric acid staining)
- 13 - Hard bone t.s.
- 14 - Hard bone l.s.
- 15 - Human bone grinding w.m.
- 16 - Hard bone of human t.s. (thionin-picric acid staining)
- 17 - Hard bone of human l.s. (thionin-picric acid staining)
- 18 - Human toe bone l.s.

Cat #: CH-COMP3 - COMPARATIVE NERVOUS SYSTEM SLIDE SET - 31 slides

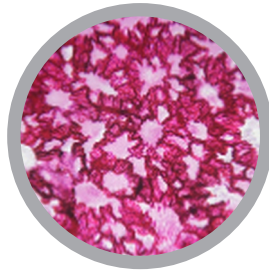
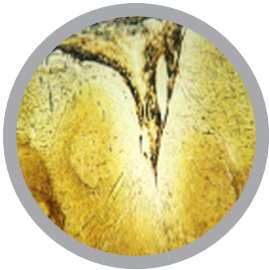


- 1 - Spinal cord of bull smear
- 2 - Neurocytes isolated w.m.
- 3 - Spinal cord of rabbit t.s. (silver staining)
- 4 - Motor end plate w.m. (gold chloride staining)
- 5 - Cerebrum of horse sec.
- 6 - Cerebrum of rabbit sec. (silver staining)
- 7 - Cerebellum of rabbit sec. (silver staining)
- 8 - Cerebellum of horse sec.
- 9 - Cerebellum of pig sec.
- 10 - Spinal ganglion of pig sec.
- 11 - Spinal ganglion of horse sec.
- 12 - Spinal ganglion of dog sec.
- 13 - Spinal ganglion of rabbit sec. (silver staining)
- 14 - Sympathetic nerve ganglion sec. (H&E)

- 15 - Sciatic nerve of pig t.s.and l.s.
- 16 - Cerebral cortex pyramidal cell sec.
- 17 - Cerebellar cortex purkinje cell sec.
- 18 - Spinal cord of human t.s.
- 19 - Brain of rabbit l.s. (silver staining)
- 20 - Spinal cord of dog t.s.
- 21 - Spinal cord of haunch of cat sec.
- 22 - Nerves trunk t.s. and l.s. (silver staining)
- 23 - Myelinated nerve fiber of human t.s.and l.s. (silver staining)
- 24 - Tactile corpuscle of human sec.
- 25 - Lamellar corpuscle of human sec.
- 26 - Cerebrum of human sec. (silver staining)
- 27 - Cerebellum of human sec. (silver staining)
- 28 - Hucklebone nerve of rabbit l.s.
- 29 - Myenteric plexus w.m.
- 30 - Sciatic nerve of rabbit l.s.
- 31 - Medulla oblongata sec.

For slide set prices see [page 40](#). If you are interested in purchasing individual slides [CLICK HERE](#)

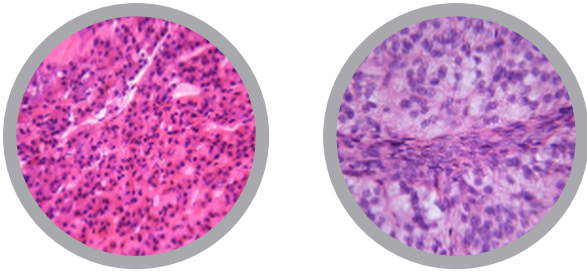
Cat #: CH-COMP4 - COMPARATIVE CIRCULATORY & RESPIRATORY SYSTEM SLIDE SET - 36 slides



- 1 - Dog heart sec. (showing heart wall)
- 2 - Heart of sheep sec.
- 3 - Large artery of sheep sec.
- 4 - Spread preparation of Mesentery (show capillary)
- 5 - Lymphatic vessel w.m. (silver staining)
- 6 - Cardiac muscle of human sec.
- 7 - Cardiac valve of human sec.
- 8 - Human medium-sized artery and vein sec.
- 9 - Large artery of human sec.
- 10 - Large vein of human sec.
- 11 - Human heart sec. (showing Purkinje cell)
- 12 - Heart of rat median l.s.
- 13 - Microcirculation
- 14 - Blood of human smear (H&E)

- 15 - Blood of human smear (stained with Giemsa)
- 16 - Blood of horse smear
- 17 - Blood of bull smear
- 18 - Blood of galus domesticus smear
- 19 - Blood (TYPE A.B.O) of human smear
- 20 - Blood of pigeon smear
- 21 - Blood of rabbit smear
- 22 - Pig blood smear
- 23 - Blood of mouse smear
- 24 - Larynx sec.
- 25 - Lung of pig sec.
- 26 - Lung sec. (blood vessels injected with colored gelatin)
- 27 - Elastic fiber of lung sec. (orcein staining)
- 28 - Trachea of cat t.s.
- 29 - Trachea of dog t.s.
- 30 - Lung of cat sec.
- 31 - Trachea of human t.s.
- 32 - Trachea of human l.s.
- 33 - Human Lung sec.
- 34 - Epiglottic cartilage of human sagittal section
- 35 - Lung of chicken sec.
- 36 - Trachea of rabbit t.s.

Cat #: CH-COMP5 - COMPARATIVE GLANDS AND THE IMMUNE SYSTEM SLIDE SET - 35 slides

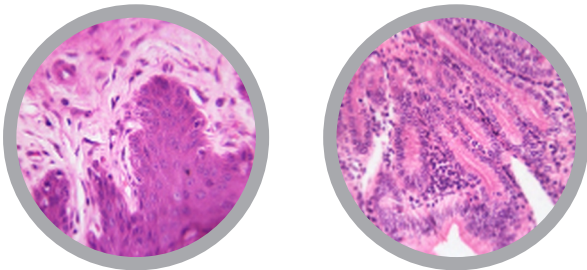


- 1 - Lymphoid node of bull sec.
- 2 - Lymphoid node of pig sec.
- 3 - Lymphoid node of cat sec.
- 4 - Spleen of bull sec.
- 5 - Spleen of pig sec.
- 6 - Spleen of horse sec.
- 7 - Thymus of chicken sec.
- 8 - Bursa fabricii of duck t.s.
- 9 - Thymus of calf sec.
- 10 - Thymus of pig sec.
- 11 - Lymphoid node of human sec.
- 12 - Spleen of human sec.
- 13 - Thymus of human sec.

- 14 - Palatine tonsil of human sec.
- 15 - Spleen of chicken sec.
- 16 - Spleen of dog sec.
- 17 - Thymus of dog sec.
- 18 - Human red bone marrow smear
- 19 - Lymphatic vessel w.m. (silver staining)
- 20 - Thyroid gland of pig sec.
- 21 - Thyroid gland of dog sec.
- 22 - Thyroid gland of horse sec.
- 23 - Thyroid gland of sheep sec.
- 24 - Hypophysis of pig sec.
- 25 - Parafollicular cells of thyroid gland sec. (silver staining)
- 26 - Adrenal gland of pig sec.
- 27 - Adrenal gland of horse sec.
- 28 - Parathyroid gland of pig sec.
- 29 - Parathyroid gland of sheep sec.
- 30 - Thyroid gland of human sec.
- 31 - Parathyroid gland of human sec.
- 32 - Adrenal gland of human sec.
- 33 - Thyroid gland of rabbit sec.
- 34 - Human pituitary sec.
- 35 - Adrenal gland of dog sec.

For slide set prices see [page 40](#). If you are interested in purchasing individual slides [CLICK HERE](#)

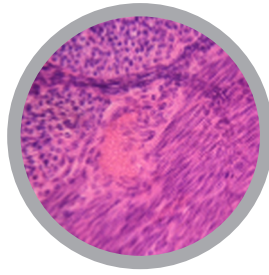
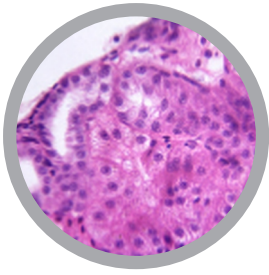
Cat #: CH-COMP6 - COMPARATIVE DIGESTIVE SYSTEM SLIDE SET - 45 slides



- 1 - Oesophagus of pig t.s.
- 2 - Gastric section of stomach of pig sec.
- 3 - Corpus ventriculi sec.
- 4 - Rumen wall of bull sec.
- 5 - Jejunum of pig sec. (silver staining)
- 6 - Pylorus section of stomach sec.
- 7 - Duodenum of pig sec.
- 8 - Ileum of dog sec.
- 9 - Colon of pig t.s.
- 10 - Submaxillary gland of sheep sec.
- 11 - Oesophagus of dog t.s.
- 12 - Liver of rabbit sec.
- 13 - Liver of mouse sec.
- 14 - Bile canaliculus of pig's liver sec. (silver staining)
- 15 - Glandular stomach of chicken t.s.
- 16 - Liver of human sec. (show bile canaliculus of liver)
- 17 - Pancreas of bull sec.

- 18 - Pancreas of pig sec.
- 19 - Intestine of monkey t.s.
- 20 - Tongue of cat l.s. (show stratum corneum)
- 21 - Tongue of human l.s. (show internal structure)
- 22 - Oesophagus of human t.s.
- 23 - Oesophagus of cat sec.
- 24 - Stomach of human t.s.
- 25 - Gastric section of stomach of human sec.
- 26 - Small intestine of human t.s.
- 27 - Small intestine of human l.s.
- 28 - Jejunum of human sec.
- 29 - Duodenum of human sec.
- 30 - Ileum of human sec.
- 31 - Vermiform appendix of human sec.
- 32 - Large intestine of human l.s.
- 33 - Large intestine of human t.s.
- 34 - Rectum sec.
- 35 - Parotid gland of human sec.
- 36 - Submandibular gland of human sec.
- 37 - Salivary gland of human sec.
- 38 - Sublingual gland of human sec.
- 39 - Small intestine of cat sec.
- 40 - Intestines of muridae sec.
- 41 - Mesentery of muridae w.m.
- 42 - Liver of guinea pig sec.
- 43 - Gall bladder of human sec.
- 44 - Intestine of rabbit t.s.
- 45 - Oesophagus of fish sec.

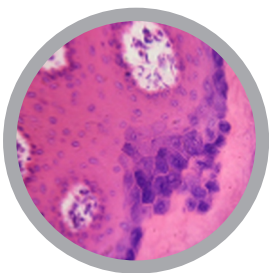
Cat #: CH-COMP7 - COMPARATIVE URINARY AND REPRODUCTIVE SYSTEM SLIDE SET - 58 slides



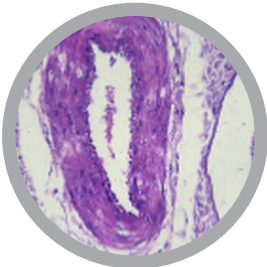
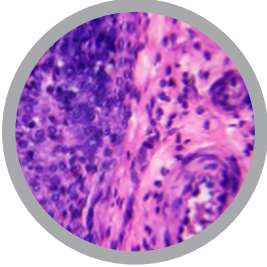
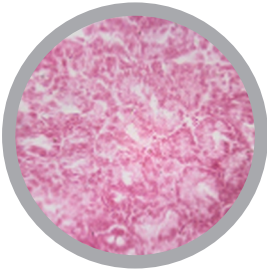
- 1 - Urinary bladder (relaxed) sec.
- 2 - Urinary bladder (distended) sec.
- 3 - Urinary bladder of human
- 4 - Urinary bladder of horse sec.
- 5 - Urinary bladder of rabbit sec.
- 6 - Ureter of bull t.s.
- 7 - Kidney of human sec.
- 8 - Ureter of human t.s.
- 9 - Kidney of human through renal cortex t.s.
- 10 - Kidney of chicken l.s.
- 11 - Kidney of bull sec.
- 12 - Kidney of sheep sec.
- 13 - Testis of rabbit sec.
- 14 - Testis of rat sec.
- 15 - Testis of cat sec.
- 16 - Testis of sheep sec.
- 17 - Testis of goat sec.
- 18 - Testis of pig sec.
- 19 - Sperm of rabbit
- 20 - Epididymis of sheep sec.
- 21 - Epididymis of bull sec.
- 22 - Ductus deferens t.s.
- 23 - Ovary of rabbit sec.
- 24 - Ovary of rat sec.

- 25 - Corpus luteum sec.
- 26 - Uterus of rabbit sec.
- 27 - Uterus (proliferative phase) sec.
- 28 - Uterus (secretory phase) sec.
- 29 - Ampullae of uterinae t.s.
- 30 - Oviduct of rabbit t.s.
- 31 - Mammary gland of cepra hircus (stationary phase) sec.
- 32 - Mammary gland of cepra hircus (secretory phase) sec.
- 33 - Mammary gland of sheep (secretory phase) sec.
- 34 - Mammary gland of sheep (stationary phase) sec.
- 35 - Uterus of pig sec.
- 36 - Testis of human sec.
- 37 - Spermatozoon of human smear
- 38 - Epididymis of human sec.
- 39 - Prostate of human sec.
- 40 - Ductus deferens of human t.s.
- 41 - Glandula vesiculosa of human sec.
- 42 - Penis of human sec. (infant)
- 43 - Human uterus (proliferative phase) sec.
- 44 - Human uterus (secretory phase) sec.
- 45 - Uterine cervix of human sec.
- 46 - Oviduct of human t.s.
- 47 - Ampulla of uterine tube of human t.s.
- 48 - Vagina of human sec.
- 49 - Human mammary gland (active phase) sec.
- 50 - Placenta of human sec.
- 51 - Umbilical cord of foetus t.s.
- 52 - Placenta of pig sec.
- 53 - Placenta of guinea pig sec.
- 54 - Ovary of human sec.
- 55 - Human corpus luteum sec.
- 56 - Ovary of cat sec.
- 57 - Placenta of rabbit sec.
- 58 - Wall of uterus of cat sec.

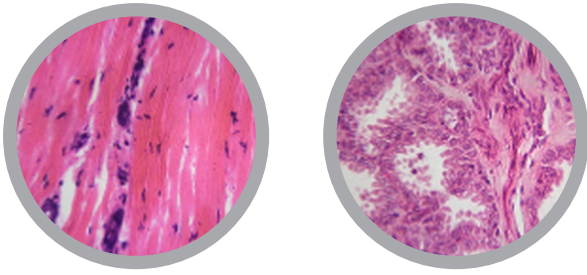
Cat #: CH-COMP8 - COMPARATIVE INTEGUMENTARY & SENSORY SYSTEM SLIDE SET - 24 slides



- 1 - Eyeball sagittal section (through optic nerve)
- 2 - Eyeball sagittal section (not through optic nerve)
- 3 - Lacrimal gland sec.
- 4 - Human eyelid sec.
- 5 - Inner ear (guinea pig)sec.
- 6 - Skin of pig (with hair) sec.
- 7 - Toe torus of pig (non-capillus skin) sec.
- 8 - Skin of horse (with hair) sec.
- 9 - Skin of horse (non-capillus skin) sec.
- 10 - Apex of tongue sec.
- 11 - Tongue of rabbit (show taste bud) sec.
- 12 - Skin of cat (non-capillus skin) sec.
- 13 - Skin of human (show sweat gland) sec.
- 14 - Skin of human (show hair follicle) t.s.
- 15 - Skin of human back sec.
- 16 - Abdominal skin of human sec.
- 17 - Hair of human w.m.
- 18 - Mast cell w.m.
- 19 - Paneth cell w.m.
- 20 - Lip sec.
- 21 - Skin of cat (without fur) sec.
- 22 - Mammalian skin (rabbit) t.s.
- 23 - Pillow toe of cat sec.
- 24 - Skin of frog t.s.

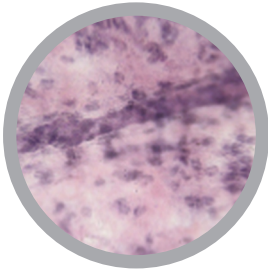
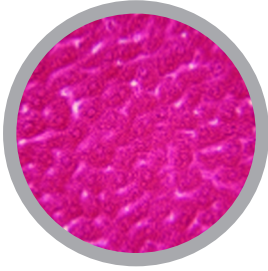
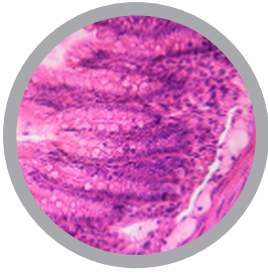


- 1 - Pseudostratified ciliated columnar epithelium of human sec.
- 2 - Simple cuboidal epithelium sec.
- 3 - Stratified squamous epithelium sec.
- 4 - Stratified columnar epithelium sec.
- 5 - Fat tissue sec.
- 6 - Hard bone of bull t.s. (thionin-picric acid staining)
- 7 - Adipose tissue of human sec.
- 8 - Hyaline cartilage of human sec.
- 9 - Fibrous cartilage of human sec.
- 10 - Elastic cartilage of human sec.
- 11 - Tail tendon of cat l.s.
- 12 - Cardiac muscle of cat sec. (hematoxylin staining)
- 13 - Skeletal muscle of cat l.s. and t.s. (hematoxylin staining)
- 14 - Smooth muscle isolated of human sec.
- 15 - Spinal cord of bull smear
- 16 - Cerebrum of rabbit sec. (silver staining)
- 17 - Cerebellum of rabbit sec. (silver staining)
- 18 - Sciatic nerve of pig t.s. and l.s.
- 19 - Spinal ganglion of rabbit sec. (silver staining)
- 20 - Human medium-sized artery and vein sec.
- 21 - Blood of human smear (stained with Giemsa)
- 22 - Blood of human smear (H&E)
- 23 - Human red bone marrow smear
- 24 - Lymphoid node of cat sec.
- 25 - Spleen of bull sec.
- 26 - Thymus of dog sec.
- 27 - Thyroid gland of pig sec.
- 28 - Adrenal gland of pig sec.
- 29 - Parathyroid gland of pig sec.
- 30 - Parotid gland of human sec.
- 31 - Larynx sec.
- 32 - Human Lung sec.
- 33 - Trachea of cat t.s.
- 34 - Trachea of dog t.s.
- 35 - Tongue of cat l.s. (show stratum corneum)
- 36 - Oesophagus of human t.s.
- 37 - Gastric section of stomach of pig sec.
- 38 - Duodenum of pig sec.
- 39 - Liver of human sec. (show bile canaliculus of liver)
- 40 - Gall bladder of human sec.
- 41 - Pancreas of pig sec.
- 42 - Small intestine sec.
- 43 - Colon of pig t.s.
- 44 - Vermiform appendix of human sec.
- 45 - Rectum sec.
- 46 - Kidney of human sec.
- 47 - Ureter of human t.s.
- 48 - Urinary bladder of horse sec.
- 49 - Testis of rabbit sec.
- 50 - Penis sec.
- 51 - Prostate of human sec.
- 52 - Ovary of rabbit sec.
- 53 - Vagina sec.
- 54 - Uterine cervix sec.
- 55 - Spermatozoon of human smear
- 56 - Oviduct of human t.s.
- 57 - Eyeball sagittal section (not through optic nerve)
- 58 - Tongue of rabbit (show taste bud) sec.
- 59 - Skin of human (show hair follicle) t.s.
- 60 - Inner ear (guinea pig) sec.



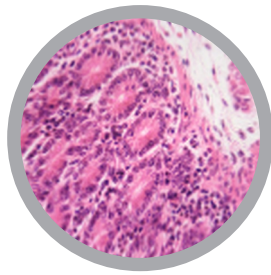
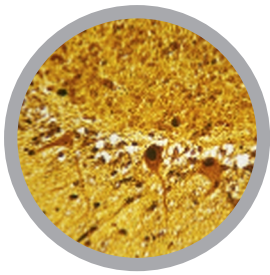
- 1 - Surface of simple squamous epithelium (silver staining)
- 2 - Transitional epithelium (vesica urinaria relaxing) sec.
- 3 - Transitional epithelium (vesica urinaria dilating) sec.
- 4 - Dense connective tissue sec.
- 5 - Pseudostratified columnar ciliated epithelium sec.
- 6 - Ligamentum nuchae of bull l.s.
- 7 - Loose connective tissue w.m.
- 8 - Smooth muscle of stomach of cat sec.
- 9 - Skeletal muscle of human t.s. and l.s. (H&E)
- 10 - Intramembranous ossification sec.
- 11 - Hard bone of human t.s. (thionin-picric acid staining)
- 12 - Hard bone of human l.s. (thionin-picric acid staining)
- 13 - Motor end plate w.m. (gold chloride staining)
- 14 - Tactile corpuscle sec.
- 15 - Lamellar corpuscle sec.
- 16 - Neurocytes isolated w.m.
- 17 - Sympathetic nerve ganglion sec (H&E)
- 18 - Cerebral cortex pyramidal cell sec.
- 19 - Cerebellar cortex purkinje cell sec.
- 20 - Medulla oblongata sec.
- 21 - Brain of rabbit l.s. (silver staining)
- 22 - Human pituitary sec.
- 23 - Lymphatic vessel w.m. (silver staining)
- 24 - Spleen of horse sec.
- 25 - Palatine tonsil of human sec.
- 26 - Para-follicular cells of thyroid gland sec. (silver staining)
- 27 - Human heart sec. (showing Purkinje cell)
- 28 - Cardiac valve of human sec.
- 29 - Microcirculation
- 30 - Blood (TYPE A.B.O) of human smear
- 31 - Tongue of human l.s. (show internal structure)
- 32 - Parotid gland sec.
- 33 - Submaxillary gland of sheep sec.
- 34 - Submandibular gland of human sec.
- 35 - Sublingual gland of human sec.
- 36 - Corpus ventriculi sec.
- 37 - Pylorus section of stomach sec.
- 38 - Jejunum of pig sec. (silver staining)
- 39 - Ileum of dog sec.
- 40 - Bile canaliculus of pig's liver sec. (silver staining)
- 41 - Gastric section of stomach of human sec.
- 42 - Myenteric plexus w.m.
- 43 - Small intestine of human t.s.
- 44 - Small intestine of human l.s.
- 45 - Lung sec. (blood vessels injected with colored gelatin)

- 46 - Elastic fiber of lung sec. (orcein staining)
- 47 - Epiglottic cartilage of human sagittal section
- 48 - Trachea of human t.s.
- 49 - Trachea of human l.s.
- 50 - Urinary bladder (relaxed) sec.
- 51 - Urinary bladder (distended) sec.
- 52 - Kidney of human through renal cortex t.s.
- 53 - Epididymis of bull sec.
- 54 - Ductus deferens t.s.
- 55 - Uterus (proliferative phase) sec.
- 56 - Uterus (secretory phase) sec.
- 57 - Mammary gland (active phase) sec.
- 58 - Mammary gland (stationary phase) sec.
- 59 - Human corpus luteum sec.
- 60 - Placenta of human sec.
- 61 - Umbilical cord of foetus t.s.
- 62 - Eyeball sagittal section (through optic nerve)
- 63 - Human eyelid sec.
- 64 - Skin of human (show sweat gland) sec.
- 65 - Mast cell w.m.
- 66 - Paneth cell w.m.
- 67 - Lip sec.
- 68 - Pillow toe of cat sec.



- 1 - Heart of rat median l.s.
- 2 - Testis of rat sec.
- 3 - Ovary of rat sec.
- 4 - Blood of mouse smear
- 5 - Liver of mouse sec.
- 6 - Hypodermal tissue of cervical of guinea pig
- 7 - Liver of guinea pig sec.
- 8 - Placenta of guinea pig sec.
- 9 - Inner ear (guinea pig) sec.
- 10 - Intestines of muridae sec.
- 11 - Mesentery of muridae w.m.
- 12 - Spinal cord of rabbit t.s. (silver staining)
- 13 - Cerebrum of rabbit sec. (silver staining)
- 14 - Cerebellum of rabbit sec. (silver staining)
- 15 - Spinal ganglion of rabbit sec. (silver staining)
- 16 - Brain of rabbit l.s. (silver staining)
- 17 - Hucklebone nerve of rabbit l.s.
- 18 - Sciatic nerve of rabbit l.s.
- 19 - Blood of rabbit smear
- 20 - Thyroid gland of rabbit sec.
- 21 - Liver of rabbit sec.
- 22 - Intestine of rabbit t.s.
- 23 - Trachea of rabbit t.s.
- 24 - Urinary bladder of rabbit sec.
- 25 - Testis of rabbit sec.
- 26 - Sperm of rabbit
- 27 - Ovary of rabbit sec.
- 28 - Uterus of rabbit sec.
- 29 - Oviduct of rabbit t.s.
- 30 - Placenta of rabbit sec.
- 31 - Tongue of rabbit (show taste bud) sec.
- 32 - Mammalian skin (rabbit) t.s.
- 33 - Tail tendon of cat l.s.
- 34 - Cardiac muscle of cat sec. (hematoxylin staining)
- 35 - Skeletal muscle of cat l.s. and t.s. (hematoxylin staining)
- 36 - Smooth muscle of stomach of cat sec.
- 37 - Spinal cord of haunch of cat sec.
- 38 - Lymphoid node of cat sec.
- 39 - Tongue of cat l.s. (show stratum corneum)
- 40 - Oesophagus of cat sec.
- 41 - Small intestine of cat sec.
- 42 - Trachea of cat t.s.
- 43 - Lung of cat sec.
- 44 - Testis of cat sec.
- 45 - Ovary of cat sec.
- 46 - Wall of uterus of cat sec.
- 47 - Skin of cat (non-capillus skin) sec.
- 48 - Skin of cat (without fur) sec.
- 49 - Pillow toe of cat sec.
- 50 - Dog cardiac muscle sec. (hematoxylin staining)
- 51 - Spinal ganglion of dog sec.
- 52 - Spinal cord of dog t.s.
- 53 - Dog heart sec. (showing heart wall)
- 54 - Spleen of dog sec.
- 55 - Thymus of dog sec.
- 56 - Thyroid gland of dog sec.
- 57 - Adrenal gland of dog sec.
- 58 - Ileum of dog sec.
- 59 - Oesophagus of dog t.s.
- 60 - Trachea of dog t.s.

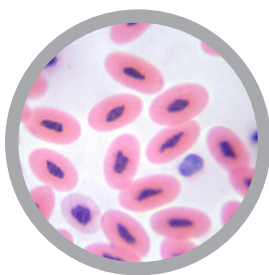
Cat #: CH-COMP12 - LARGE ANIMAL HISTOLOGY SLIDE SET - 60 slides



- 1 - Cerebrum of horse sec.
- 2 - Cerebellum of horse sec.
- 3 - Spinal ganglion of horse sec.
- 4 - Blood of horse smear
- 5 - Spleen of horse sec.
- 6 - Thyroid gland of horse sec.
- 7 - Adrenal gland of horse sec.
- 8 - Urinary bladder of horse sec.
- 9 - Skin of horse (with hair) sec.
- 10 - Skin of horse (non-capillus skin) sec.
- 11 - Hard bone of bull t.s. (thionin-picric acid staining)
- 12 - Hard bone of bull l.s. (thionin-picric acid staining)
- 13 - Lymphoid node of bull sec.
- 14 - Ligamentum nuchae of bull l.s.
- 15 - Spinal cord of bull smear
- 16 - Blood of bull smear
- 17 - Rumen wall of bull sec.
- 18 - Pancreas of bull sec.
- 19 - Ureter of bull t.s.
- 20 - Kidney of bull sec.
- 21 - Epididymis of bull sec.
- 22 - Mammary gland of cepra hircus (goat) (stationary phase) sec.
- 23 - Mammary gland of cepra hircus (goat) (secretory phase) sec.
- 24 - Testis of goat sec.
- 25 - Heart of sheep sec.
- 26 - Large artery of sheep sec.
- 27 - Thyroid gland of sheep sec.
- 28 - Parathyroid gland of sheep sec.
- 29 - Submaxillary gland of sheep sec.
- 30 - Kidney of sheep sec.
- 31 - Testis of sheep sec.
- 32 - Epididymis of sheep sec.
- 33 - Mammary gland of sheep (secretory phase) sec.
- 34 - Mammary gland of sheep (stationary phase) sec.
- 35 - Cerebellum of pig sec.
- 36 - Spinal ganglion of pig sec.
- 37 - Sciatic nerve of pig t.s. and l.s.
- 38 - Pig blood smear
- 39 - Lymphoid node of pig sec.
- 40 - Spleen of pig sec.
- 41 - Thymus of pig sec.
- 42 - Thyroid gland of pig sec.
- 43 - Hypophysis of pig sec.
- 44 - Adrenal gland of pig sec.
- 45 - Parathyroid gland of pig sec.
- 46 - Oesophagus of pig t.s.
- 47 - Gastric section of stomach of pig sec.
- 48 - Jejunum of pig sec. (silver staining)
- 49 - Duodenum of pig sec.
- 50 - Colon of pig t.s.
- 51 - Liver of pig sec.
- 52 - Bile canaliculus of pig's liver sec. (silver staining)
- 53 - Pancreas of pig sec.
- 54 - Lung of pig sec.
- 55 - Testis of pig sec.
- 56 - Uterus of pig sec.
- 57 - Placenta of pig sec.
- 58 - Skin of pig (with hair) sec.
- 59 - Toe torus of pig (non-capillus skin) sec.
- 60 - Thymus of calf sec.

For slide set prices see [page 40](#). If you are interested in purchasing individual slides [CLICK HERE](#).

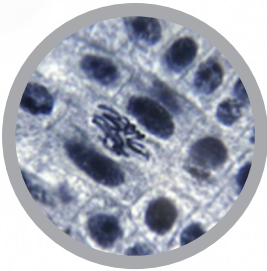
Cat #: CH-COMP13 - COMPARATIVE BLOOD SLIDE SET - 14 slides



- 1 - Blood of human smear (H&E)
- 2 - Blood of human smear (stained with Giemsa)
- 3 - Blood of horse smear
- 4 - Blood of bull smear
- 5 - Blood of Galus domesticus smear
- 6 - Blood (TYPE A.B.O) of human smear
- 7 - Blood of pigeon smear
- 8 - Blood of rabbit smear
- 9 - Blood of mouse smear
- 10 - Pig blood smear
- 11 - Blood of lizard smear
- 12 - Blood of fish smear
- 13 - Blood of Carassius auratus smear
- 14 - Blood of snake sec.

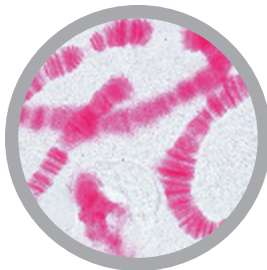
CYTOLOGY & GENETICS SLIDE SETS

Cat #: CH-GE1 - ANIMAL AND PLANT GENETICS SLIDE SET - 17 slides



- 1 - Mitosis of animal sec. (*Parascaris equorum*)
- 2 - Meiosis of animal sec. (Locust)
- 3 - Meiosis of *Parascaris equorum* sec.
- 4 - Testis of grasshopper meiosis sec.
- 5 - Testis of frog meiosis
- 6 - Testis of rabbit meiosis
- 7 - Meiosis of plants sections (*Lilium* anther)
- 8 - Root tip of *Allium cepa* l.s. (show mitotic division)
- 9 - Root tip of *Zea mays* l.s. (show mitosis)
- 10 - Chromosome of *allium* w.m.
- 11 - Root tip of *vicia faba* (show mitosis)
- 12 - Meiosis of anther of *Zea mays* (metaphase1)
- 13 - Meiosis of anther of *Zea mays* (anaphase1)
- 14 - Meiosis of anther of *Zea mays* (telophase1)
- 15 - Meiosis of anther of *Zea mays* (metaphase2)
- 16 - Meiosis of anther of *Zea mays* (anaphase2)
- 17 - Meiosis of anther of *Zea mays* (telophase2)

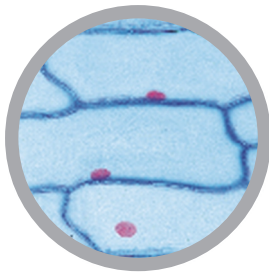
Cat #: JL-1CEG - THE ANIMAL CELL SLIDE SET - 12 slides



- 1 - Squamous epithelium, isolated cells from human mouth. Nuclei and cytoplasm are shown
- 2 - Striated muscle l.s. showing nuclei, striations, myofibrils
- 3 - Compact bone and hyaline cartilage t.s., two sections on one slide for comparison
- 4 - Nerve fibres isolated, fixed and stained by osmic acid to show myeline sheaths and Ranvier's nodes
- 5 - Liver of Salamandra t.s., showing simple animal cells with cellular membranes, nuclei, and cytoplasm
- 6 - Kidney of mouse, t.s. vital stained with trypanblue to demonstrate the storage of epithelial cells
- 7 - Ovary of cat, t.s. showing primary, secondary, and Graafian follicles
- 8 - Testis of frog, t.s. showing spermatogenesis. Spermatogonia, spermatocytes, spermatids, and mature spermatozoa
- 9 - Salamandra larva, t.s. of skin and other organs selected to show cell division (mitosis) in various stages
- 10 - Uteri of *Ascaris megalocephala*, t.s. iron hematoxyline stained to show details of meiosis with chromosomes and nuclear spindles
- 11 - Salivary gland of *Chironomus* larva. Giant chromosomes showing large chromomeres. Stained for DNA after Feulgen
- 12 - Ova from *Psammechinus* (sea urchin). Unfertilized ova, fertilized ova, early

For slide set prices see [page 40](#). If you are interested in purchasing individual slides [CLICK HERE](#).

Cat #: JL-2CEG - THE PLANT CELL SLIDE SET - 12 slides



- 1 - Epidermis of *Allium cepa* (onion), w.m. showing simple plant cells with cell walls, nuclei and cytoplasm
- 2 - Root tips of *Allium cepa* l.s. showing cell division (mitosis) in all stages, clearly stained
- 3 - Pollen mother cells of *Lilium*. Prophase of first maturation division (meiosis) showing chromosomes as fine threads
- 4 - Pollen mother cells of *Lilium*. Metaphase and anaphase of first maturation division (meiosis) showing nuclear spindles and contracted chromosomes
- 5 - Wood of *Tilia* macerated and w.m. showing wood cells, vessels and fibres
- 6 - Fruit of *Pyrus* (pear) t.s. showing stone cells (sclerenchyma cells)
- 7 - Tuber of *Solanum* (potato) t.s. shows cork and starch grains
- 8 - *Cucurbita pepo* (pumpkin) l.s. of stem showing vascular bundles with sieve tubes, spiral and annular vessels, sclerenchyma fibres
- 9 - *Ricinus* endosperm t.s. showing aleurone grains
- 10 - Anthers of *Lilium* (lily), t.s. showing pollen sacs and pollen grains
- 11 - Ovary of *Lilium* (lily), t.s. showing arrangement of ovules and embryosac
- 12 - *Spirogyra* showing conjugation stages and formation of zygotes

Cat #: JL-9CEG - DEVELOPMENT OF
THE MICROSPORE MOTHER CELLS OF *LILIAM CANDIDUM* SLIDE SET - 12 slides

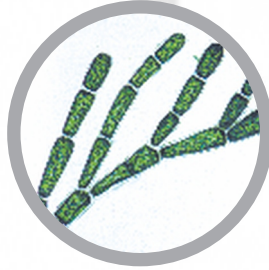


- 1 - Leptotene, the chromosomes appear as fine threads
- 2 - Zygotene, the homologous chromosomes associate in pairs. The chromosomes appear as strings of beads
- 3 - Pachytene, complete pairing of the chromosomes
- 4 - Diplotene, shortening of the chromosomes by contraction. Interchange of chromatin between the maternal and paternal chromosomes (crossing over)
- 5 - Diakinesis, further contraction of the bivalents, the nuclear membrane disappears
- 6 - Metaphase and anaphase of the first (heterotypic) division, showing spindle threads. Two haploid sets of chromosomes are separated
- 7 - Telophase of the first and prophase of the second division
- 8 - Metaphase and anaphase of the second (homeotypic) division, two mitotic figures are present.
- 9 - Pollen tetrads, four nuclei are formed after the second division, each bearing the haploid number of chromosomes. Formation of cell walls
- 10 - Uninucleate microspores after separation of daughter cells
- 11 - Mature two-nucleate pollen grains at the time of shedding. Each pollen grain possesses a tube cell and a generative cell
- 12 - Mature pollen grains, w.m. to show structure of the cell walls

For slide set prices see [page 40](#). If you are interested in purchasing individual slides [CLICK HERE](#)

ECOLOGY SLIDE SETS

Cat #: JL-1EM - MICROSCOPIC LIFE IN THE WATER, PART 1 SLIDE SET - 25 slides

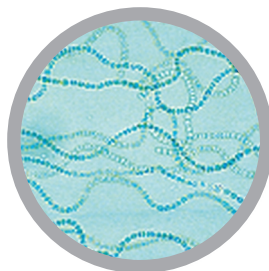
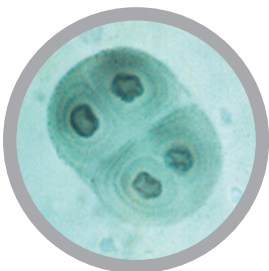


- 1 - Amoeba proteus, amoeba
- 2 - Ceratium hirundinella, dinoflagellates
- 3 - Euglena, green flagellate with eyespot
- 4 - Radiolaria, marine rhizopods
- 5 - Paramecium, nuclei stained
- 6 - Stylonychia, a common ciliate
- 7 - Spongilla, fresh water sponge, isolated spicules
- 8 - Hydra, w.m. or section
- 9 - Rotatoria, rotifers, mixed species
- 10 - Daphnia, water flea, a phyllopod

- 11 - Cyclops, a copepod
- 12 - Chironomus, gnat, larva w.m.
- 13 - Putrefaction causing bacteria from hay infusions
- 14 - Oscillatoria, a filamentous blue green alga
- 15 - Diatomeae, diatoms, mixed species
- 16 - Desmidiaceae, desmids, mixed species
- 17 - Spirogyra, green alga with spiral chloroplasts
- 18 - Eudorina, small colonies within gelatinous sheaths
- 19 - Cladophora, green alga, branched filaments
- 20 - Draparnaldia, main filaments and branchings
- 21 - Microcystis, irregular colonies
- 22 - Ulothrix, filamentous green alga with girdle-shaped chloroplasts
- 23 - Oedogonium, vegetative filaments
- 24 - Volvox, with daughter colonies and sexual stages
- 25 - Mesothaenium, rod-shaped desmids

For slide set prices see [page 40](#). If you are interested in purchasing individual slides [CLICK HERE](#)

Cat #: JL-2EM - MICROSCOPIC LIFE IN THE WATER, PART 2 SLIDE SET - 25 slides

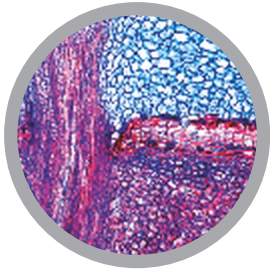


- 1 - Arcella, shelled amoeba
- 2 - Vorticella, a stalked ciliate
- 3 - Colpidium, a common holotrich ciliate
- 4 - Spongilla, fresh water sponge, t.s. showing channels
- 5 - Planaria, fresh water flat worm, t.s. of body
- 6 - Tubifex, a fresh water oligochaete
- 7 - Plumatella, moss animal, section of colony
- 8 - Cyclops, nauplius larva w.m.
- 9 - Culex pipiens, common mosquito, larva w.m.
- 10 - Sphaerotilus natans, bacteria from putrid water forming chains

- 11 - Nostoc, blue green alga with heterocysts
- 12 - Anabaena, filamentous blue green alga
- 13 - Gloeocapsa, small colonies within sheaths
- 14 - Rivularia, blue green alga with basal heterocysts
- 15 - Beggiatoa, a colourless alga showing lack of chlorophyll
- 16 - Zygnum, filamentous alga with stellate chloroplasts
- 17 - Cosmarium, desmid showing the typical isthmus
- 18 - Chlamydomonas, biflagellate alga
- 19 - Haematococcus, unicellular red algae
- 20 - Hydrodictyon, water-net
- 21 - Chlorella, unicellular green alga
- 22 - Dynobryon, a golden alga forming colonies
- 23 - Mixed plankton, strewn slide No. I
- 24 - Mixed plankton, strewn slide No. II
- 25 - Mixed plankton, strewn slide No. III

Cat #: JL-3EM - THE WOODS:

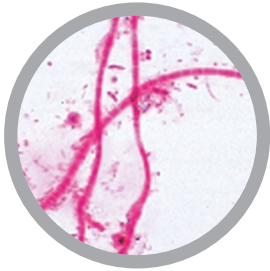
CONSEQUENCES OF ENVIRONMENTAL POLLUTION SLIDE SET - 20 slides



- 1 - Pine (*Pinus*), healthy leaves, t.s.
- 2 - Pine (*Pinus*) leaves damaged by acid rain, t.s.
- 3 - Fir (*Abies*), healthy leaves, t.s.
- 4 - Fir (*Abies*), stem tip damaged t.s.
- 5 - Beech (*Fagus*), healthy leaves t.s.
- 6 - Beech (*Fagus*), t.s. of leaves with destroyed epidermis and chloroplasts

- 7 - *Rhytisma acerinum*, tar spot of maples, consequence of single-crop farming
- 8 - Early leaf fall, caused by thawing salt
- 9 - Healthy lichen, indicator of clean air
- 10 - Damaged lichen, caused by air pollution
- 11 - Healthy wood of beech, t.s.
- 12 - Wood destroyed by fungus
- 13 - *Polyporus*, wood rot fungus, fruiting body t.s.
- 14 - Root nodules of *Alnus*, with symbiotic bacteria
- 15 - Spruce beetle (*Cryphalus picea*), larva t.s.
- 16 - Wood with normal annual rings, t.s.
- 17 - Wood with anomalous narrow annual rings caused by drought, t.s.
- 18 - Bark with larval galleries of spruce beetle, t.s.
- 19 - Pineapple-like gall on spruce caused by lice, t.s.
- 20 - Gall nut on oak caused by insects, t.s.

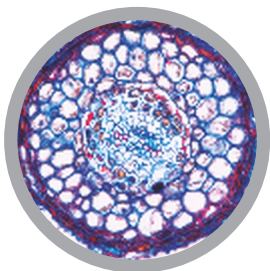
Cat #: JL-4EM - THE WATER POLLUTION, PROBLEMS AND RESULTS SLIDE SET - 20 slides



- 1 - Intestinal bacteria (*Escherichia coli*) from putrid water
- 2 - Putrefactive bacteria (*Spirillum*) from sludge poor in oxygen
- 3 - Putrefactive bacteria (*Sphaerotilus*) bacteria, forming long chains with sheaths
- 4 - Sludge bacteria (*Methanobacterium*) causing sewer gas
- 5 - Sulphur bacteria (*Thiocystis*)
- 6 - Wasserbluthe (*Microcystis*), blue-green alga "blooming" in stagnant water
- 7 - *Anabaena*, blue green algae, in eutrophic water

- 8 - *Spirogyra*, filamentous green alga in nutrient-rich water
- 9 - *Spirulina*, corkscrew-shaped algae occurring in bitter seas
- 10 - *Chlamydomonas*, one-celled green alga in eutrophic water
- 11 - *Cladophora*, green alga with branching filaments from moderately polluted water
- 12 - Diatoms, mixed algae from scarcely polluted water
- 13 - *Euglena*, common green flagellates occurring in stagnant eutrophic water
- 14 - Ciliates, different species from nutrient-rich water
- 15 - Rotifers (*Rotatoria*), small animals from putrid water
- 16 - *Tubifex*, fresh water oligochaete, living in the sludge
- 17 - *Carchesium*, bell-shaped stalked ciliate from moderately polluted water
- 18 - Water mould (*Saprolegnia*), harmful to plants and animals
- 19 - Skin of fish injured by chemicals, t.s.
- 20 - Skin ulcer of an amphibian, t.s.

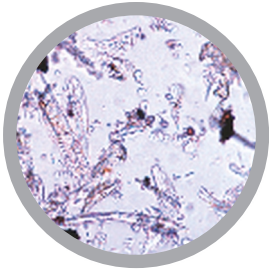
Cat #: JL-5EM - LIFE IN THE SOIL SLIDE SET - 17 slides



- 1 - Acidophile soil bacteria, solution of heavy metals
- 2 - Nitrite bacteria, forming harmful nitrogenous substances
- 3 - Root of beech with ectotrophic mycorrhiza, t.s.
- 4 - Root of birch with partly endotrophic mycorrhiza, t.s.

- 5 - Root of lupin with symbiotic nitrogen fixing bacteria
- 6 - Netted venation, portion of rotted deciduous leaf
- 7 - Charlock (*Sinapis*), t.s. of stem. Green manure plant
- 8 - Soil bacteria (*Bacillus megaterium*), smear
- 9 - Hyphae of root fungi, t.s.
- 10 - Lichen, indicator of clean air
- 11 - Mushroom (*Xerocomus*), mycelium
- 12 - Root of willow (*Salix*), planting protecting against erosion
- 13 - Earthworm (*Lumbricus*) t.s., causing soil improvement
- 14 - Springtails (*Collembola*), w.m.
- 15 - Mite from forest soil, w.m.
- 16 - Constituents of humous soil
- 17 - Constituents of peaty soil

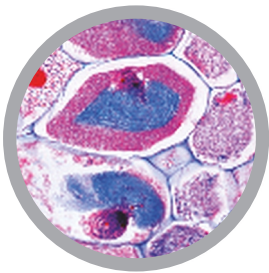
Cat #: JL-6EM - AIR POLLUTION AND ALLERGENS SLIDE SET - 15 slides



- 1 - Pollen grains of different kinds of grass
- 2 - Pollen grains of different deciduous trees
- 3 - Pollen grains of different conifers
- 4 - Mixed house dust
- 5 - Dust mite from a living room
- 6 - Spores of different fungi
- 7 - Wood powder
- 8 - Asbestos powder (cancerogenous)
- 9 - Talcum powder
- 10 - Crystals of washing-powder
- 11 - Polyamide fibres
- 12 - Nylon fibres
- 13 - Mucous membrane of human nose, t.s.
- 14 - Healthy human lung, t.s.
- 15 - Human lung injured with dust particles, t.s.

For slide set prices see [page 40](#). If you are interested in purchasing individual slides [CLICK HERE](#)

Cat #: JL-7EM - ADAPTATION OF PLANTS TO THE ENVIRONMENT SLIDE SET - 50 slides



Adaptation to temperature

- 1 - Ilex, t.s. of leaf showing cuticula
- 2 - Aesculus, t.s. of leaf bud showing bud squama
- 3 - Fern, t.s. of subterraneous rhizome
- 4 - Beta, beet, t.s. of a subterraneous storage root
- 5 - Solanum, potato, t.s. of subterraneous tuber
- 6 - Allium, l.s. of a subterraneous bulb
- 7 - Ranunculus ficaria, t.s. of subterraneous tuber
- 8 - Taraxacum, dandelion, t.s. of tap root
- 9 - Dentaria, l.s. of germinal bulb

Adaptation for gaining light

- 10 - Galium, w.m. of leaf showing climbing hairs
- 11 - Cucurbita, l.s. of stem showing sieve tubes
- 12 - Viscum album, t.s. of leaf
- 13 - Orchis, epiphytic, t.s. of aerial root
- 14 - Dischidia, t.s. of pitcher leaf showing root

Adaptation to unusual modes of nutrition

- 15 - Rhizophora, mangrove, t.s. of adventitious root
- 16 - Philodendron (Araceae), t.s. of aerial root
- 17 - Liana, climbing plant, t.s. of root
- 18 - Cuscuta, dodder, t.s. of host showing haustorium
- 19 - Viscum album, mistletoe, l.s. showing parasitic root in host
- 20 - Orchis, t.s. of root showing endotrophic mycorrhiza
- 21 - Alnus, alder, t.s. of tuber showing actinomyces in symbiosis
- 22 - Drosera, w.m. of leaf showing glandular hairs
- 23 - Drosera, t.s. of leaf showing glandular hairs

- 24 - Pinguicula, t.s. of leaf showing gland cells
 - 25 - Utricularia, w.m. of bladder
 - 26 - Nepenthes, t.s. of pitcher showing glands
 - 27 - Dionaea, Venus flytrap, t.s. of leaf
- Adaptation to water: Hydrophytic plants**
- 28 - Elodea, w.m. of a submersed leaf without stomata
 - 29 - Elodea, t.s. of leaf
 - 30 - Nymphaea, t.s. of aquatic stem showing air vascular system
 - 31 - Hippuris, t.s. of stem showing regular placed air chambers
 - 32 - Nymphaea, t.s. of leaf showing air chambers, a typical floating leaf
 - 33 - Potamogeton, t.s. of leaf
 - 34 - Taxodium (Cypressaceae), t.s. of root for respiration
 - 35 - Potamogeton, t.s. of aquatic stem showing air chambers

Adaptation to damp habitats: Hygrophytic plants

- 36 - Ruellia, t.s. of leaf showing raised stomata
- 37 - Polypodium (fern), t.s. of leaf showing modification of epidermis (water pit)
- 38 - Urtica, nettle, w.m. of stinging hairs (one cellular)
- 39 - Myosotis palustris, w.m. of leaf showing hairs for water reservoir

Adaptation to dry habitats: Xerophytic plants

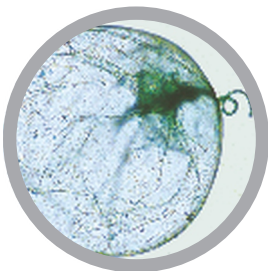
- 40 - Hedera, t.s. of an evergreen leaf
- 41 - Nerium, oleander, t.s. of leaf showing sunken stomata
- 42 - Dune grass, t.s. of rolled leaf
- 43 - Verbascum, t.s. of leaf showing branched hairs
- 44 - Elaeagnus, squama of leaf or stem, w.m.
- 45 - Orchis, epiphytic, t.s. of aerial root
- 46 - Aloe, t.s. of succulent leaf
- 47 - Sedum, t.s. of succulent leaf
- 48 - Pelargonium, t.s. of succulent root
- 49 - Cactus, t.s. of succulent stem
- 50 - Cactus, t.s. of succulent leaf

Cat #: JL-8EM - MICROSCOPIC ORGANISMS OF FRESHWATER SLIDE SET - 20 slides



- 1 - Amoeba proteus, w.m.
- 2 - Arcella shells, w.m.
- 3 - Euglena viridis, w.m.
- 4 - Ceratium hirundinella, w.m.
- 5 - Paramecium, w.m.
- 6 - Vorticella, freshwater, w.m.
- 7 - Plankton showing Diffugia and Rotatoria
- 8 - Hydra, w.m. (Pelmatohydra)
- 9 - Freshwater sponge, w.m. of gemmulae
- 10 - Daphnia, w.m. of freshwater flea
- 11 - Cyclops, w.m.
- 12 - Pandorina morum, colonies of green algae, w.m.
- 13 - Volvox, w.m.
- 14 - Chlamydomonas, green algae, w.m.
- 15 - Hydrodictyon, water net, w.m.
- 16 - Cladophora, branching filaments, w.m.
- 17 - Oedogonium, w.m.
- 18 - Planktonic algae, Eudorina, Pediastrum, Microcystis
- 19 - Vegetative filaments, Spirogyra, Zygnema, Mougeotia
- 20 - Desmids, various species
- 21 - Diatoms stained for protoplasmatic structure
- 22 - Batrachospermum, w.m. red alga
- 23 - Chroococcus, w.m.
- 24 - Anabaena, w.m.
- 25 - Bacteria from putrefaction smear

Cat #: JL-9EM - MICROSCOPIC ORGANISMS OF SEAWATER SLIDE SET - 15 slides



- 1 - Silicoflagellatae
- 2 - Radiolaria, strewn slide of cleaned shells
- 3 - Foraminifera, strewn slide of cleaned shells
- 4 - Peridinium, marine dinoflagellates
- 5 - Vorticella, marine ciliates
- 6 - Noctiluca, a luminescent flagellate
- 7 - Marine plankton, mixed species
- 8 - Pluteus larvae of sea urchin
- 9 - Eggs of sea urchin, different phases of development
- 10 - Sagitta, transparent marine worm, w.m.
- 11 - Caprella, a marine amphipode, w.m.
- 12 - Zoea, development stage of a marine decapode crab, w.m.
- 13 - Obelia, w.m. of medusa
- 14 - Campanularia, w.m. of colony
- 15 - Hydractinia, w.m.

For slide set prices see [page 40](#). If you are interested in purchasing individual slides [CLICK HERE](#)

EMBRYOLOGY SLIDE SETS

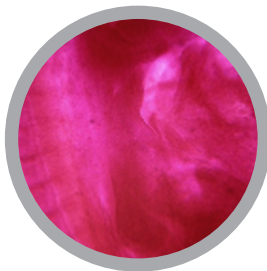
Cat #: CH-EMB1 - FROG EMBRYOLOGY SLIDE SET - 28 slides



- 1 - Simple-cell of egg of frog sec.
- 2 - 2-cell of egg of frog sec.
- 3 - Early cleavage stage of egg of frog sec.
- 4 - Late cleavage stage of egg of frog sec.
- 5 - Early blastula stage of egg of frog sec.
- 6 - Late blastula stage of egg of frog sec.
- 7 - Early gastrula stage of egg of frog sec.
- 8 - Late gastrula stage of egg of frog sec.
- 9 - Neural plate stage of egg of frog sec.
- 10 - Neural fold stage of egg of frog sec.
- 11 - Neural tube stage of egg of frog sec.
- 12 - 3mm embryo of frog w.m.
- 13 - 3mm embryo of frog serial transverse sections (set)
- 14 - 3mm embryo of frog serial sagittal sections t.s. (set)
- 15 - 5mm embryo of frog w.m.
- 16 - 5mm embryo of frog serial transverse sections (2pcs/set)
- 17 - 5mm embryo of frog serial sagittal sections (set)
- 18 - 7-9mm embryo of frog serial longitudinal sections (set)
- 19 - 7-9mm embryo of frog serial transverse sections (2pcs/set)
- 20 - 7-9mm embryo of frog serial frontal sections (2pcs/set)
- 21 - 10-11mm embryo of frog serial longitudinal sections (2pcs/set)
- 22 - 10-11mm embryo of frog serial transverse sections (4pcs/set)
- 23 - 10-11mm embryo of frog serial frontal sections (2pcs/set)
- 24 - Anterior part of 10mm embryo of frog l.s.
- 25 - 11mm embryo of frog l.s.
- 26 - Head of tadpole t.s.
- 27 - Thorax of tadpole t.s.
- 28 - Abdomen of tadpole t.s.

For slide set prices see [page 40](#). If you are interested in purchasing individual slides [CLICK HERE](#)

Cat #: CH-EMB2 - CHICKEN EMBRYOLOGY SLIDE SET - 15 slides



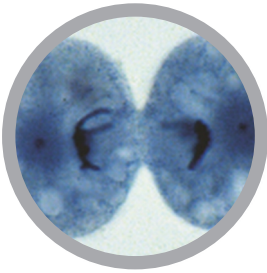
- 1 - Fertilized eggs of *Penaeus orientalis* w.m.
- 2 - Early stage of cleavage of *Penaeus orientalis* (2 cells) w.m.
- 3 - Early stage of cleavage of *Penaeus orientalis* (4 cells) w.m.
- 4 - Early stage of cleavage of *Penaeus orientalis* (8 cells) w.m.
- 5 - Blastula stage of *Penaeus orientalis* w.m.
- 6 - Gastrula stage of *Penaeus orientalis* w.m.
- 7 - Nauplius in membrane w.m.
- 8 - Embryo of chicken (24 hour) w.m.
- 9 - Embryo of chicken (24 hour) serial transverse sections.
- 10 - Embryo of chicken (48 hour) w.m.
- 11 - Embryo of chicken (48 hour) serial transverse sections.
- 12 - Embryo of chicken (72 hour) w.m.
- 13 - Embryo of chicken (72 hour) serial transverse sections.
- 14 - Embryo of chicken (96 hour) w.m.
- 15 - Embryo of chicken (96 hour) serial transverse sections.

Cat #: JL-4CEG - SEA URCHIN EMBRYOLOGY SLIDE SET - 12 slides



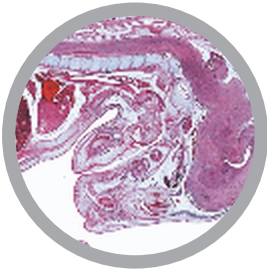
- 1 - Sea urchin, unfertilized eggs
- 2 - Sea urchin, fertilized eggs
- 3 - Sea urchin, two cells
- 4 - Sea urchin, four cells
- 5 - Sea urchin, eight cells
- 6 - Sea urchin, sixteen cells
- 7 - Sea urchin, thirty-two cells
- 8 - Sea urchin, morula
- 9 - Sea urchin, blastula
- 10 - Sea urchin, blastula, beginning gastrulation
- 11 - Sea urchin, blastula, progressive gastrulation
- 12 - Sea urchin, pluteus larva

Cat #: JL-5CEG - ASCARIS MEGALOCEPHALA EMBRYOLOGY SLIDE SET - 10 slides



- 1 - Cell division in l.s. of Allium root tips, each slide showing all mitotic stages, carefully stained. For general study of mitosis
- 2 - Ascaris, primary germ cells in the growing zone of oviduct
- 3 - Ascaris, entrance of sperm in the oocytes
- 4 - Ascaris, first and second maturation divisions in oocytes I
- 5 - Ascaris, first and second maturation divisions in oocytes II
- 6 - Ascaris, mature oocytes with male and female pronuclei
- 7 - Ascaris, early cleavage stages
- 8 - Ascaris, later cleavage stages
- 9 - Ascaris, adult female roundworm, t.s. in region of gonads
- 10 - Ascaris, adult male roundworm, t.s. in region of gonads

Cat #: JL-8CEG - PIG EMBRYOLOGY SLIDE SET - 10 slides



- 1 - Pig embryo, 4-6 mm, typical t.s.
- 2 - Pig embryo, 7-9 mm, sagittal l.s.
- 3 - Pig embryo, 11-12 mm, typical t.s. through region of head
- 4 - Pig embryo, 11-12 mm, typical t.s. region of abdomen
- 5 - Pig embryo, 15 mm, typical t.s. through region of head
- 6 - Pig embryo, 15 mm, typical t.s. through region of thorax
- 7 - Pig embryo, 15 mm, typical t.s. through region of abdomen
- 8 - Pig embryo, 15 mm, sagittal l.s.
- 9 - Pig embryo, 20-25 mm, sagittal l.s.
- 10 - Pig embryo, 20-25 mm, frontal l.s.

For slide set prices see [page 40](#). If you are interested in purchasing individual slides [CLICK HERE](#)

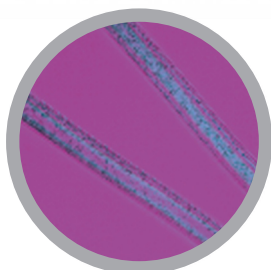
MISCELLANEOUS SLIDE SETS

Cat #: JL-3MM - WOOD SECTIONS SLIDE SET - 25 slides



- 1 - Maple. *Acer platanoides*
- 2 - Apple. *Pyrus malus*
- 3 - Birch. *Betula pendula*
- 4 - Pear. *Pyrus communis*
- 5 - Mountain ash. *Sorbus aucuparia*
- 6 - Yew. *Taxus baccata*
- 7 - Oak. *Quercus robur*
- 8 - Alder. *Alnus glutinosa*
- 9 - Ash. *Fraxinus excelsior*
- 10 - Spruce. *Picea excelsa*
- 11 - White beech. *Carpinus betulus*
- 12 - Pine. *Pinus silvestris*
- 13 - Cherry. *Prunus avium*
- 14 - Larch. *Larix decidua*
- 15 - Lime. *Tilia platyphylla*
- 16 - Walnut. *Juglans regia*
- 17 - Poplar. *Populus alba*
- 18 - Plane. *Platanus orientalis*
- 19 - Plum. *Prunus domestica*
- 20 - Black locust. *Robinia pseudacacia*
- 21 - Chestnut. *Aesculus hippocastanum*
- 22 - Beech. *Fagus sylvatica*
- 23 - Elm. *Ulmus scabra*
- 24 - Willow. *Salix alba*
- 25 - Fir. *Abies alba*

Cat #: JL-4MM - TEXTILE FIBRES AND FABRICS SLIDE SET - 25 slides



- 1 - Angora wool
- 2 - Camel-hair
- 3 - Merino wool
- 4 - Mohair
- 5 - European wool
- 6 - Australian wool
- 7 - Cocoon silk, raw
- 8 - Organsin silk
- 9 - Tussah silk
- 10 - Egyptian cotton
- 11 - Mercerized cotton
- 12 - Linen (flax)
- 13 - Jute
- 14 - Italian hemp
- 15 - Ramie
- 16 - Cellulose
- 17 - Cuprama rayon
- 18 - Casein fibre
- 19 - PVC fibre
- 20 - Acetate rayon
- 21 - Viscose rayon
- 22 - Bemberg rayon
- 23 - Perlon
- 24 - Gauze
- 25 - Nylon fabric

Cat #: JL-3MM - TYPES OF PAPER SLIDE SET - 25 slides



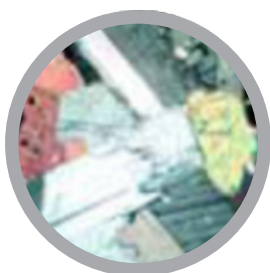
- 1 - Bank paper
- 2 - Book paper, wood-free
- 3 - Mould-made paper, 100 percent rag
- 4 - Chromo paper containing wood pulp
- 5 - Esparto paper
- 6 - Filter paper
- 7 - India paper
- 8 - Rough-surface paper containing sawdust
- 9 - Kraft paper, brown
- 10 - Art paper
- 11 - Copper plate printing paper
- 12 - Blotting paper
- 13 - Standard paper No. 3, rag/pulp
- 14 - Grease-proof paper
- 15 - Sulphate kraft paper
- 16 - Stencil raw silk, 100 percent manila
- 17 - Wrapping paper
- 18 - Counterfeit-proof check paper
- 19 - Sulphite wrapping paper
- 20 - Book printing paper, wood-free
- 21 - Newsprint
- 22 - Wood pulp paper
- 23 - Cigarette paper
- 24 - Straw board
- 25 - Wood pulp board

Cat #: JL-10MM - HUMAN SCALP AND HAIR SLIDE SET - 12 slides



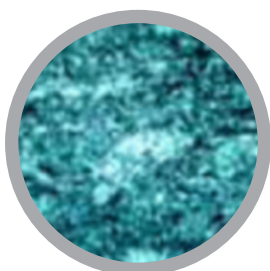
- 1 - Human scalp, vertical sec. shows l.s. of hair follicles
- 2 - Human scalp, horizontal sec. shows t.s. of hair follicles
- 3 - Natural blond and black hair
- 4 - Greyed hair
- 5 - Eyelash
- 6 - Hair of beard
- 7 - Hair from infant
- 8 - Artificially bleached hair
- 9 - Split hair tips
- 10 - Singed hair
- 11 - Eggs of louse attached to the hair, w.m.
- 12 - Human head louse (*Pediculus capitis*), w.m.

Cat #: JL-12MM - ROCKS AND MINERALS GROUND THIN, SET 1 SLIDE SET - 10 slides



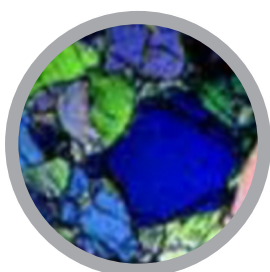
- 1 - Granite
- 2 - Syenite
- 3 - Gabbro
- 4 - Basalt
- 5 - Gneiss
- 6 - Mica schist
- 7 - Quartzite
- 8 - Marble
- 9 - Sandstone
- 10 - Limestone fossilized

Cat #: JL-13MM - ROCKS AND MINERALS GROUND THIN, SET 2 SLIDE SET - 10 slides



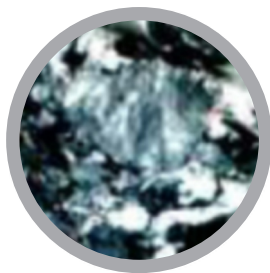
- 1 - Andesite
- 2 - Trachyte
- 3 - Thylolite
- 4 - Diorite
- 5 - Microgranite
- 6 - Chalk
- 7 - Limestone oolitic
- 8 - Millstone
- 9 - Coal
- 10 - Schist

Cat #: JL-14MM - ROCKS AND MINERALS, IGNEOUS ROCKS, SET 2 SLIDE SET - 31 slides



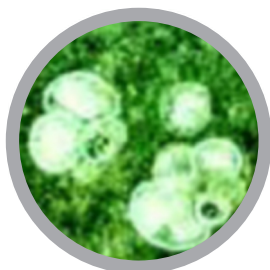
- | | |
|---|-----------------------|
| 1 - Altered granite | 18 - Porphyry granite |
| 2 - Andesite | 19 - Kimberlite |
| 3 - Basalt | 20 - Laurvikite |
| 4 - Basalt with olivin | 21 - Microdiorite |
| 5 - Basalt with phenocryst and white feldspar | 22 - Microgranite |
| 6 - Picrit basalt | 23 - Peridotite |
| 7 - Tholeiitic basalt | 24 - Phonolite |
| 8 - Granodiorite | 25 - Rhyolite |
| 9 - Pillow lava | 26 - Red rhyolite |
| 10 - Dacite | 27 - Syenite |
| 11 - Diorite | 28 - Tephrite |
| 12 - Diorite quartzique | 29 - Trachyandesite |
| 13 - Dolerite | 30 - Trachyte |
| 14 - Doreite | 31 - Volcanic breccia |
| 15 - Gabbro | |
| 16 - Granite | |
| 17 - Two-micas granite | |

Cat #: JL-15MM - ROCKS AND MINERALS, METAMORPHIC ROCKS, SET 4 SLIDE SET - 29 slides



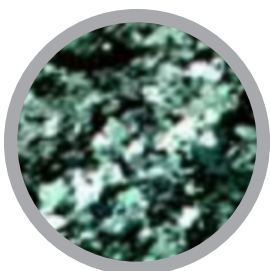
- 1 - Amphibolite
- 2 - Anatexis granite
- 3 - Eclogite with garnets
- 4 - Eclogite with coronitisation haloes
- 5 - Glaucophanite
- 6 - Gneiss
- 7 - Augen gneiss
- 8 - Gneiss with sillimanite
- 9 - Garnetite
- 10 - Granulite
- 11 - Hornstone
- 12 - Green hornstone
- 13 - Marble
- 14 - Metagabbro with hornblende
- 15 - Metagabbro with glaucophane
- 16 - Micaschist
- 17 - Micaschist with cordierite
- 18 - Micaschist with two-micas
- 19 - Micaschist with kyanite
- 20 - Micaschist with garnets
- 21 - Micaschist with glaucophane
- 22 - Micaschist with chloritoid
- 23 - Migmatite
- 24 - Quartzite
- 25 - Schist
- 26 - Schiste with andalusite
- 27 - Serpentinised peridotite
- 28 - Green schist
- 29 - Serpentinite

Cat #: JL-16MM - ROCKS AND MINERALS, SEDIMENTARY ROCKS, SET 5 SLIDE SET - 22 slides



- 1 - Arkose
- 2 - Chalk
- 3 - Coal
- 4 - Gypsum
- 5 - Limestone with alveolina
- 6 - Limestone with asphalt
- 7 - Fossilized limestone
- 8 - Limestone with crinoid stem
- 9 - Glauconitic limestone
- 10 - Limestone with globotruncana (maastrichtien)
- 11 - Limestone with globigerinina (paleocene)
- 12 - Limestone with miliolidae
- 13 - Limestone with nummulitidae
- 14 - Limestone with ooids
- 15 - Limestone with polyp
- 16 - Limestone with iron ooids
- 17 - Limestone with intraclasts
- 18 - Oil shale
- 19 - Sandstone
- 20 - Calcareous sandstone
- 21 - Slate
- 22 - Travertine

Cat #: JL-16MM - ROCKS AND MINERALS, FOSSILS AND METEORITES, SET 6 SLIDE SET - 4 slides

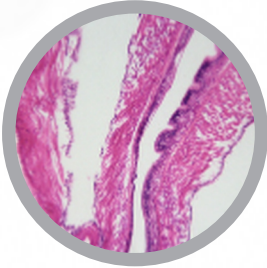


- 1 - Chondrite (Meteorite)
- 2 - Suévite (Impactite breccia)
- 3 - Petrified wood
- 4 - Stromatolite

For slide set prices see [page 40](#). If you are interested in purchasing individual slides [CLICK HERE](#)

ZOOLOGY SLIDE SETS

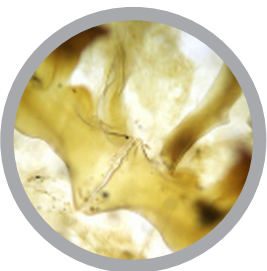
Cat #: CH-ZO1 - ZOOLOGY - PORIFERA, COELENTERATA AND ECHINODERMATA SLIDE SET - 28 slides



- 1 - Freshwater spongia w.m.
- 2 - Spicule of Spongia (calcium) w.m.
- 3 - Spicule of Spongia (silica) w.m.
- 4 - Hydra w.m.
- 5 - Hydra with bud w.m.
- 6 - Hydra t.s.
- 7 - Hydra l.s.
- 8 - Hydra through testes t.s.
- 9 - Hydra through ovary t.s.
- 10 - Nerve net of Hydra w.m.
- 11 - Hydra through bud l.s.
- 12 - Hydra through food in cavity l.s.
- 13 - Hydra with food in cavity w.m.
- 14 - Hydra through ovary & testes t.s.
- 15 - Hydra catch food l.s.
- 16 - Starfish through papula t.s.
- 17 - Body wall of Starfish t.s.
- 18 - Arm of starfish (show nerve) t.s.
- 19 - Starfish through central disc and arm l.s.
- 20 - Eggs of Sea urchin w.m.
- 21 - 2-cell stage of egg of Sea urchin w.m.
- 22 - 4-cell stage of egg of Sea urchin w.m.
- 23 - 8-cell stage of egg of Sea urchin w.m.
- 24 - 16-cell stage of egg of Sea urchin w.m.
- 25 - 32-cell stage of egg of Sea urchin w.m.
- 26 - Blastula stage of egg of Sea urchin w.m.
- 27 - Gastrula of egg of Sea urchin w.m.
- 28 - Cleavage stage of egg of Sea urchin w.m.

For slide set prices see [page 40](#). If you are interested in purchasing individual slides [CLICK HERE](#)

Cat #: CH-ZO2 - ZOOLOGY - ARTHROPODA SLIDE SET - 25 slides



- 1 - Larva of trombididae w.m.
- 2 - Adult of trombididae w.m.
- 3 - Larva of gamasidae w.m.
- 4 - Adult of gamasidae mite w.m.
- 5 - Adult of Dermatophagoides farinae w.m.
- 6 - Mouthpart of acanthosomatidae w.m.
- 7 - Macrosiphum avenae w.m.
- 8 - Chewing mouthpart of grasshopper w.m.
- 9 - Jumping leg of grasshopper w.m.
- 10 - Coriaceous wing of grasshopper w.m.
- 11 - Filiform antenna of grasshopper w.m.
- 12 - Malpighian tube of grasshopper w.m.
- 13 - Genitalia of grasshopper w.m.
- 14 - Dorsal vessel of grasshopper t.s.
- 15 - Central nerve cord of grasshopper l.s.
- 16 - Oesophagus of grasshopper t.s.
- 17 - Crop of grasshopper t.s.
- 18 - Proventriculus of grasshopper t.s.
- 19 - Mid gut of grasshopper t.s.
- 20 - Hind gut of grasshopper t.s.
- 21 - Testis of grasshopper l.s.
- 22 - Gizzard of cricket t.s.
- 23 - Front Legs of cricket w.m.
- 24 - Digging leg of mole cricket w.m.
- 25 - Mouthpart of cricket w.m.

Cat #: CH-ZO3 - ZOOLOGY - DIPTERA SLIDE SET - 43 slides

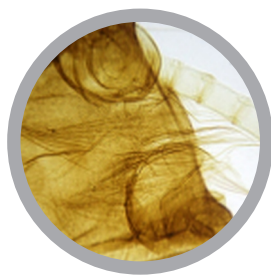


- 1 - Eggs of anopheles w.m.
- 2 - Eggs of culex w.m.
- 3 - Eggs of aedes w.m.
- 4 - Pupa of anopheles w.m.
- 5 - Pupa of culex w.m.
- 6 - Pupa of aedes w.m.
- 7 - Larva of anopheles w.m.
- 8 - Larva of culex w.m.
- 9 - Larva of aedes w.m.
- 10 - Mouthpart of female anopheles w.m.
- 11 - Mouthpart of male anopheles w.m.
- 12 - Mouthpart of female culex w.m.
- 13 - Mouthpart of male culex w.m.
- 14 - Mouthpart of female aedes w.m.
- 15 - Mouthpart of male aedes w.m.
- 16 - Male and female anopheles w.m.
- 17 - Male and female culex w.m.
- 18 - Male and female aedes w.m.

- 19 - Mouthpart of musca domestica w.m.
- 20 - Maggot w.m.
- 21 - Adult of female phlebotomus w.m.
- 22 - Adult of male phlebotomus w.m.
- 23 - Mouthparts of culex (female and male) w.m.
- 24 - Mouthparts of china anopheles (female and male) w.m.
- 25 - Antenna of china anopheles (female and male) w.m.
- 26 - Eggs of musca domestica w.m.
- 27 - Pupa of musca domestica w.m.
- 28 - Sitodiplosis mosellana w.m.
- 29 - Piercing-sucking mouthpart of mosquito w.m.
- 30 - Siphoning mouthpart of musca domestica w.m.
- 31 - Pseudohalteres of musca domestica w.m.
- 32 - Aristate antenna of musca domestica w.m.
- 33 - Whorled antenna of male mosquito w.m.
- 34 - Wings of drosophila w.m.
- 35 - Incomplete wings of drosophila w.m.
- 36 - Drosophila melanogaster w.m. female
- 37 - Drosophila melanogaster w.m. male
- 38 - Eggs of drosophila melanogaster w.m.
- 39 - Legs of musca domestica w.m.
- 40 - Wings of musca domestica w.m.
- 41 - Wing of culex w.m.
- 42 - Larva of chironomus w.m.
- 43 - Compound eye of musca domestica w.m.

For slide set prices see [page 40](#). If you are interested in purchasing individual slides [CLICK HERE](#)

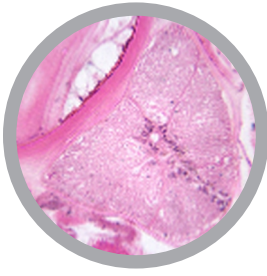
Cat #: CH-ZO4 - ZOOLOGY - LEPIDOPTERA AND HYMENOPTERA SLIDE SET - 30 slides



- 1 - Chewing-lapping mouthpart of honeybee w.m.
- 2 - Pollen-carrying leg of honeybee w.m.
- 3 - Membranous wing of honeybee w.m.
- 4 - Genuiculate antenna of honeybee w.m.
- 5 - The sting of a bee w.m.
- 6 - Compound eye of bee w.m.
- 7 - Siphoning mouthpart of butterfly w.m.
- 8 - Lepidotic of butterfly w.m.
- 9 - Plumose antenna of moth w.m.
- 10 - Clavate antenna of butterfly w.m.
- 11 - Muscle of silkworm l.s.
- 12 - Gnathal segments of larva of bombyx mori w.m.

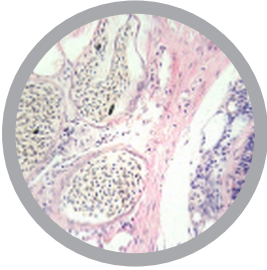
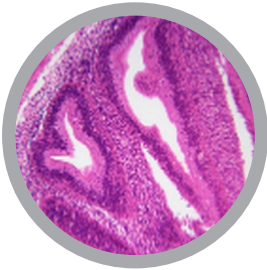
- 13 - Body wall of larva of bombyx mori t.s.
- 14 - Mid gut of bombyx mori t.s.
- 15 - Dorsal vessel of larva of bombyx mori t.s.
- 16 - Blood of bombyx mori smear
- 17 - Malpighian tube of bombyx mori w.m.
- 18 - Sericterium of bombyx mori t.s.
- 19 - Brain of bombyx mori t.s.
- 20 - Ovary of bombyx mori t.s.
- 21 - Testis of bombyx mori t.s.
- 22 - Eggs of bombyx mori t.s.
- 23 - Larva of bombyx mori w.m.
- 24 - One-year larva of bombyx mori w.m.
- 25 - Two-years larva of bombyx mori w.m.
- 26 - Three-years larva of bombyx mori w.m.
- 27 - Body of larva of hawk moth t.s.
- 28 - Eggs of hawk moth w.m.
- 29 - Eggs of Pieris rapae w.m.
- 30 - Chilo surpressalis w.m.

Cat #: CH-ZO5 - ZOOLOGY - AMPHIOXUS SLIDE SET - 16 slides



- 1 - Amphioxus w.m. (carmine)
- 2 - Amphioxus through oral hood t.s.
- 3 - Amphioxus through pharynx t.s.
- 4 - Amphioxus through intestine t.s.
- 5 - Amphioxus through gonad t.s.
- 6 - Amphioxus through caudal region t.s.
- 7 - Amphioxus combination (oral hood, pharynx, intestine, caudal region)
- 8 - Eggs of Amphioxus w.m.
- 9 - 2-cell stage of egg of amphioxus w.m.
- 10 - 4-cell stage of egg of amphioxus w.m.
- 11 - 8-cell stage of egg of amphioxus w.m.
- 12 - 16-cell stage of egg of amphioxus w.m.
- 13 - 32-cell stage of egg of amphioxus w.m.
- 14 - Blastula stage of egg of amphioxus w.m.
- 15 - Gastrula stage of amphioxus w.m.
- 16 - Amphioxus through front middle and back part t.s.

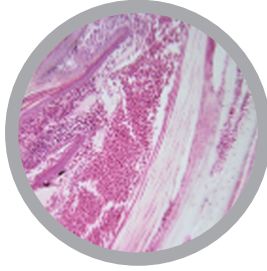
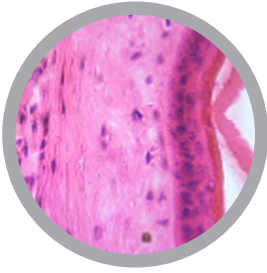
Cat #: CH-ZO6 - ZOOLOGY - FISH SLIDE SET - 35 slides



- 1 - Spleen of fish t.s.
- 2 - Oesophagus of fish sec.
- 3 - Wall of stomach of fish sec.
- 4 - Bone muscle of fish t.s.
- 5 - Heart of fish t.s.
- 6 - Rigidity squama of fish w.m.
- 7 - Smooth muscle of fish t.s.
- 8 - Caudal region of freshwater fish t.s.
- 9 - Brain of *Cyprinus carpio* l.s. (silver staining)
- 10 - Taste bud of *Cyprinus carpio* sec.
- 11 - Skin of *Lateolabrax japonicus* (show scale arrangement) t.s.
- 12 - Testis of Grass carp sec.
- 13 - Hepatopancreas of Grass carp t.s.
- 14 - Gill of Silver carp t.s.
- 15 - Testis of Silver carp t.s.
- 16 - Scale of young t.s. (silver staining)
- 17 - Spinal cord of *Hypophthalmichthys molitrix* t.s. (silver staining)
- 18 - Testis of *Hypophthalmichthys molitrix* sec.
- 19 - Ovary of *Hypophthalmichthys molitrix* sec.
- 20 - Blood of *Carassius auratus* smear
- 21 - Scale of *Carassius auratus* w.m.
- 22 - Brain of *Carassius auratus* l.s.
- 23 - Spermium of *Carassius auratus* sec.
- 24 - Ovary of *Carassius auratus* sec.
- 25 - Anterior kidney of *Carassius auratus* sec.
- 26 - Mid kidney of *Carassius auratus* sec.
- 27 - Hind kidney of *Carassius auratus* sec.
- 28 - Spinal cord of *Carassius auratus* t.s.
- 29 - Taste bud of *Carassius auratus* sec.
- 30 - Intestine of *Carassius auratus* sec.
- 31 - Pit organ of *Misgurnus anguillicadatus* t.s.
- 32 - Bristle of *Misgurnus anguillicadatus* (show taste bud) t.s.
- 33 - Intestine of *Misgurnus anguillicadatus* t.s.
- 34 - *Petromyzon median sagittal section*
- 35 - Skin of *Petromyzon* sec.

For slide set prices see [page 40](#). If you are interested in purchasing individual slides [CLICK HERE](#)

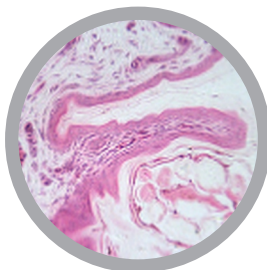
Cat #: CH-ZO7 - ZOOLOGY - AMPHIBIA AND REPTILIA SLIDE SET - 36 slides



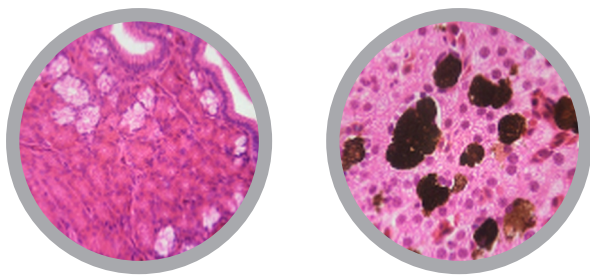
- 1 - Skin of *Cynops orientalis* (show poison gland) t.s.
- 2 - Liver of *Cynops orientalis* (show poison gland) sec.
- 3 - Skin of *bufo bufo* t.s.
- 4 - Spermium of *bufo bufo* t.s.
- 5 - Ovary of *bufo bufo* t.s.
- 6 - Tendon of *bufo bufo* t.s.
- 7 - Chromatophores of skin of frog w.m.
- 8 - Skin of frog t.s.
- 9 - Liver of frog t.s.
- 10 - Blood of frog smear
- 11 - Tongue of frog (ciliated epithelium) t.s.
- 12 - Lung of frog t.s.
- 13 - Ovary of frog sec.
- 14 - Intestine of frog t.s.
- 15 - Tadpole l.s.
- 16 - Testis of frog t.s.
- 17 - Skin of *Rana tigrina* t.s.
- 18 - Muscle of *Rana tigrina* t.s.
- 19 - Kidney of *Rana tigrina* t.s.
- 20 - Intestine of *Rana tigrina* t.s.
- 21 - Liver of *Rana tigrina* t.s.
- 22 - Kidney of gecko sec.
- 23 - Feet of gecko sec.
- 24 - Intestine of gecko t.s.
- 25 - Stomach of gecko sec.
- 26 - Lung of gecko sec.
- 27 - Skin of snake sec.
- 28 - Mesenteron of snake sec.
- 29 - Hindgut of snake sec.
- 30 - Rectum of snake sec.
- 31 - Muscle of snake sec.
- 32 - Stomach of snake sec.
- 33 - Gallbladder of snake sec.
- 34 - Blood of snake sec.
- 35 - Skin of lizard t.s.
- 36 - Blood of lizard smear

For slide set prices see [page 40](#). If you are interested in purchasing individual slides [CLICK HERE](#)

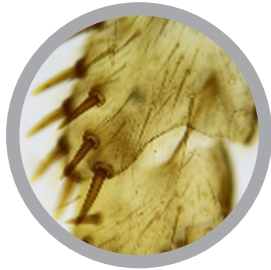
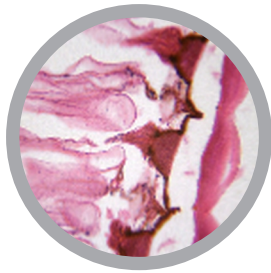
Cat #: CH-ZO8 - ZOOLOGY - BIRD SLIDE SET - 19 slides



- 1 - Hair and feather skin of bird sec.
- 2 - Skin of bird sec. (show feather)
- 3 - Feather of turkey w.m.
- 4 - Contour feather of bird (bright yellow) w.m.
- 5 - Down feather of bird w.m.
- 6 - Three types feather of birds (turkey, sparrow, pigeon)
- 7 - Cloaca of pigeon l.s.
- 8 - Lung of bird t.s.
- 9 - Eye of bird sagittal section
- 10 - Gizzard of duck t.s.
- 11 - Comb t.s.
- 12 - Feather of goose w.m.
- 13 - Ovary of bird (show forming egg) t.s.
- 14 - Ovary of chicken t.s.
- 15 - Glandulose stomach of chicken t.s.
- 16 - Lung of chicken t.s.
- 17 - Kidney of chicken t.s.
- 18 - Blood of *Gallus domesticus* smear
- 19 - Blood of pigeon smear



- 1 - Spleen of fish t.s.
- 2 - Oesophagus of fish sec.
- 3 - Wall of stomach of fish sec.
- 4 - Bone muscle of fish t.s.
- 5 - Heart of fish t.s.
- 6 - Rigidity squama of fish w.m.
- 7 - Smooth muscle of fish t.s.
- 8 - Caudal region of freshwater fish t.s.
- 9 - Brain of *Cyprinus carpio* l.s. (silver staining)
- 10 - Taste bud of *Cyprinus carpio* sec.
- 11 - Skin of *Lateolabrax japonicus* (show scale arrangement) t.s.
- 12 - Testis of Grass carp sec.
- 13 - Heptopancreas of Grass carp t.s.
- 14 - Gill of Silver carp t.s.
- 15 - Testis of Silver carp t.s.
- 16 - Scale of young t.s. (silver staining)
- 17 - Spinal cord of *Hypophthalmichthys molitrix* t.s. (silver staining)
- 18 - Testis of *Hypophthalmichthys molitrix* sec.
- 19 - Ovary of *Hypophthalmichthys molitrix* sec.
- 20 - Blood of *Carassius auratus* smear
- 21 - Scale of *Carassius auratus* w.m.
- 22 - Brain of *Carassius auratus* l.s.
- 23 - Spermium of *Carassius auratus* sec.
- 24 - Ovary of *Carassius auratus* sec.
- 25 - Anterior kidney of *Carassius auratus* sec.
- 26 - Mid kidney of *Carassius auratus* sec.
- 27 - Hind kidney of *Carassius auratus* sec.
- 28 - Spinal cord of *Carassius auratus* t.s.
- 29 - Taste bud of *Carassius auratus* sec.
- 30 - Intestine of *Carassius auratus* sec.
- 31 - Pit organ of *Misgurnus anguillicadatus* t.s.
- 32 - Bristle of *Misgurnus anguillicadatus* (show taste bud) t.s.
- 33 - Intestine of *Misgurnus anguillicadatus* t.s.
- 34 - *Petromyzon median* sagittal section
- 35 - Skin of *Petromyzon* sec.
- 36 - Skin of *Cynops orientalis* (show poison gland) t.s.
- 37 - Liver of *Cynops orientalis* (show poison gland) sec.
- 38 - Skin of *bufo bufo* t.s.
- 39 - Spermium of *bufo bufo* t.s.
- 40 - Ovary of *bufo bufo* t.s.
- 41 - Tendon of *bufo bufo* t.s.
- 42 - Chromatophores of skin of frog w.m.
- 43 - Skin of frog t.s.
- 44 - Liver of frog t.s.
- 45 - Blood of frog smear
- 46 - Tongue of frog (ciliated epithelium) t.s.
- 47 - Lung of frog t.s.
- 48 - Ovary of frog sec.
- 49 - Intestine of frog t.s.
- 50 - Tadpole l.s.
- 51 - Testis of frog t.s.
- 52 - Skin of *Rana tigrina* t.s.
- 53 - Muscle of *Rana tigrina* t.s.
- 54 - Kidney of *Rana tigrina* t.s.
- 55 - Intestine of *Rana tigrina* t.s.
- 56 - Liver of *Rana tigrina* t.s.
- 57 - Kidney of gecko sec.
- 58 - Feet of gecko sec.
- 59 - Intestine of gecko t.s.
- 60 - Stomach of gecko sec.
- 61 - Lung of gecko sec.
- 62 - Skin of snake sec.
- 63 - Mesenteron of snake sec.
- 64 - Hindgut of snake sec.
- 65 - Rectum of snake sec.
- 66 - Muscle of snake sec.
- 67 - Stomach of snake sec.
- 68 - Gallbladder of snake sec.
- 69 - Blood of snake sec.
- 70 - Skin of lizard t.s.
- 71 - Blood of lizard smear
- 72 - Hair and feather skin of bird sec.
- 73 - Skin of bird sec. (show feather)
- 74 - Feather of turkey w.m.
- 75 - Contour feather of bird (bright yellow) w.m.
- 76 - Down feather of bird w.m.
- 77 - Three types feather of birds (turkey, sparrow, pigeon)
- 78 - Cloaca of pigeon l.s.
- 79 - Lung of bird t.s.
- 80 - Eye of bird sagittal section
- 81 - Gizzard of duck t.s.
- 82 - Comb t.s.
- 83 - Feather of goose w.m.
- 84 - Ovary of bird (show forming egg) t.s.
- 85 - Ovary of chicken t.s.
- 86 - Glandulose stomach of chicken t.s.
- 87 - Lung of chicken t.s.
- 88 - Kidney of chicken t.s.



- 1 - Freshwater plankton w.m.
- 2 - Freshwater spongia w.m.
- 3 - Spicule of Spongia (calcium) w.m.
- 4 - Spicule of Spongia (silica) w.m.
- 5 - Hydra w.m.
- 6 - Hydra with bud w.m.
- 7 - Hydra t.s.
- 8 - Hydra l.s.
- 9 - Hydra through testes t.s.
- 10 - Hydra through ovary t.s.
- 11 - Nerve net of Hydra w.m.
- 12 - Hydra through bud l.s.
- 13 - Hydra through food in cavity l.s.
- 14 - Hydra with food in cavity w.m.
- 15 - Hydra through ovary & testes t.s.
- 16 - Hydra catch food l.s.
- 17 - Starfish through papula t.s.
- 18 - Body wall of Starfish t.s.
- 19 - Arm of starfish (show nerve) t.s.
- 20 - Starfish through central disc & arm l.s.
- 21 - Eggs of Sea urchin w.m.
- 22 - Amphioxus w.m. (carmine)
- 23 - Amphioxus through oral hood t.s.
- 24 - Amphioxus through pharynx t.s.
- 25 - Amphioxus through intestine t.s.
- 26 - Amphioxus through gonad t.s.
- 27 - Amphioxus through caudal region t.s.
- 28 - Amphioxus combination (oral hood, pharynx, intestine, caudal region)
- 29 - Eggs of Amphioxus w.m.
- 30 - Larva of trombididae w.m.
- 31 - Adult of trombididae w.m.
- 32 - Larva of gamasidae w.m.
- 33 - Adult of gamasidae mite w.m.
- 34 - Adult Dermatophagoides farinae w.m.
- 35 - Mouthpart of acanthosomatidae w.m.
- 36 - Macrosiphum avenae w.m.
- 37 - Chewing mouthpart of grasshopper w.m.
- 38 - Jumping leg of grasshopper w.m.
- 39 - Coriaceous wing of grasshopper w.m.
- 40 - Filiform antenna of grasshopper w.m.
- 41 - Malpighian tube of grasshopper w.m.
- 42 - Genitalia of grasshopper w.m.
- 43 - Dorsal vessel of grasshopper t.s.
- 44 - Ventral nerve cord of grasshopper l.s.
- 45 - Oesophagus of grasshopper t.s.
- 46 - Crop of grasshopper t.s.
- 47 - Proventriculus of grasshopper t.s.
- 48 - Mid gut of grasshopper t.s.
- 49 - Hind gut of grasshopper t.s.
- 50 - Testis of grasshopper l.s.
- 51 - Gizzard of cricket t.s.
- 52 - Front Legs of cricket w.m.
- 53 - Digging leg of mole cricket w.m.
- 54 - Mouthpart of cricket w.m.
- 55 - Eggs of anopheles w.m.
- 56 - Eggs of culex w.m.
- 57 - Eggs of aedes w.m.
- 58 - Pupa of anopheles w.m.
- 59 - Pupa of culex w.m.
- 60 - Pupa of aedes w.m.
- 61 - Larva of anopheles w.m.
- 62 - Larva of culex w.m.
- 63 - Larva of aedes w.m.
- 64 - Mouthpart of female anopheles w.m.
- 65 - Mouthpart of male anopheles w.m.
- 66 - Mouthpart of female culex w.m.
- 67 - Mouthpart of male culex w.m.
- 68 - Mouthpart of female aedes w.m.
- 69 - Mouthpart of male aedes w.m.
- 70 - Male and female anopheles w.m.
- 71 - Male and female culex w.m.
- 72 - Male and female aedes w.m.
- 73 - Mouthpart of musca domestica w.m.
- 74 - Maggot w.m.
- 75 - Adult of female phlebotomus w.m.
- 76 - Adult of male phlebotomus w.m.
- 77 - Mouthparts of culex (female and male) w.m.
- 78 - Mouthparts of china anopheles (male and female) w.m.
- 79 - Antenna of china anopheles (female and male) w.m.
- 80 - Eggs of musca domestica w.m.
- 81 - Pupa of musca domestica w.m.
- 82 - Sitodiplosis mosellana w.m.
- 83 - Piercing-sucking mouthpart of mosquito w.m.
- 84 - Siphoning mouthpart of musca domestica w.m.
- 85 - Pseudohalteres of musca domestica w.m.
- 86 - Aristate antenna of musca domestica w.m.
- 87 - Whorled antenna of male mosquito w.m.
- 88 - Wings of drosophila w.m.
- 89 - Incomplete wings of drosophila w.m.
- 90 - Drosophila melanogaster w.m. female
- 91 - Drosophila melanogaster w.m. male
- 92 - Eggs of drosophila melanogaster w.m.
- 93 - Legs of musca domestica w.m.
- 94 - Wings of musca domestica w.m.
- 95 - Wing of culex w.m.
- 96 - Larva of chironomus w.m.
- 97 - Compound eye of musca domestica w.m.
- 98 - Chewing-lapping mouthpart of honey-
bee w.m.
- 99 - Pollen-carrying leg of honeybee w.m.
- 100 - Membranous wing of honeybee w.m.
- 101 - Genuiculate antenna of honeybee w.m.
- 102 - The sting of a bee w.m.
- 103 - Compound eye of bee w.m.
- 104 - Siphoning mouthpart of butterfly
w.m.
- 105 - Lepidotic of butterfly w.m.
- 106 - Plumose antenna of moth w.m.
- 107 - Clavate antenna of butterfly w.m.
- 108 - Muscle of silkworm l.s.
- 109 - Gnathal segments of larva of bombyx
mori w.m.
- 110 - Body wall of bombyx mori larva t.s.
- 111 - Mid gut of bombyx mori t.s.
- 112 - Dorsal vessel of larva of bombyx
mori t.s.
- 113 - Blood of bombyx mori smear
- 114 - Malpighian tube of bombyx mori
w.m.
- 115 - Sericterium of bombyx mori t.s.
- 116 - Brain of bombyx mori t.s.
- 117 - Ovary of bombyx mori t.s.
- 118 - Testis of bombyx mori t.s.
- 119 - Eggs of bombyx mori t.s.
- 120 - Larva of bombyx mori w.m.
- 121 - One-year larva of bombyx mori w.m.
- 122 - 2 years larva of bombyx mori w.m.
- 123 - 3 years larva of bombyx mori w.m.
- 124 - Body of larva of hawk moth t.s.
- 125 - Eggs of hawk moth w.m.
- 126 - Eggs of Pieris rapae w.m.
- 127 - Chilo surpressalis w.m.

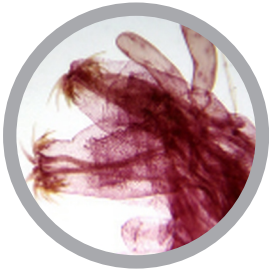
Cat #: CH-ZO11 - ZOOLOGY - INSECT PARTS SLIDE SET - 41 slides



- 1 - Legs of musca domestica w.m.
- 2 - Pollen-carrying leg of honeybee w.m.
- 3 - Digging leg of mole cricket w.m.
- 4 - Jumping leg of grasshopper w.m.
- 5 - Front Legs of cricket w.m.
- 6 - Climbing leg of louse w.m.
- 7 - Walking leg of cockroach w.m.
- 8 - Grasping leg of mantis w.m.
- 9 - Clasp ing leg of diving beetle w.m.
- 10 - Antenna of china anopheles (female and male) w.m.
- 11 - Aristate antenna of musca domestica w.m.
- 12 - Antenna of male mosquito w.m.
- 13 - Genuiculate antenna of honeybee w.m.
- 14 - Plumose antenna of moth w.m.
- 15 - Clavate antenna of butterfly w.m.
- 16 - Filiformis antenna of grasshopper w.m.
- 17 - Setaceous antenna of dragonfly w.m.
- 18 - Moniliform antenna of termite w.m.
- 19 - Serrate antenna of epicauta gorhami w.m.

- 20 - Mouthpart of acanthosomatidae w.m.
- 21 - Mouthpart of female anopheles w.m.
- 22 - Mouthpart of male anopheles w.m.
- 23 - Mouthpart of female aedes w.m.
- 24 - Mouthpart of male aedes w.m.
- 25 - Mouthpart of musca domestica w.m.
- 26 - Mouthparts of culex (female and male) w.m.
- 27 - Mouthparts of china anopheles (female and male) w.m.
- 28 - Piercing-sucking mouthpart of mosquito w.m.
- 29 - Siphoning mouthpart of musca domestica w.m.
- 30 - Chewing-lapping mouthpart of honeybee w.m.
- 31 - Siphoning mouthpart of butterfly w.m.
- 32 - Chewing mouthpart of grasshopper w.m.
- 33 - Mouthpart of cricket w.m.
- 34 - Mouthpart of blackbeetle w.m.
- 35 - Wings of drosophila w.m.
- 36 - Incomplete wings of drosophila w.m.
- 37 - Wings of musca domestica w.m.
- 38 - Wing of culex w.m.
- 39 - Membranous wing of honeybee w.m.
- 40 - Coriaceous wing of grasshopper w.m.
- 41 - Wing of aeshna cyanea sec.

Cat #: CH-ZO12 - ZOOLOGY - INSECT LIFE CYCLE SLIDE SET - 28 slides



- 1 - Eggs of anopheles w.m.
- 2 - Eggs of culex w.m.
- 3 - Eggs of aedes w.m.
- 4 - Eggs of musca domestica w.m.
- 5 - Eggs of drosophila melanogaster w.m.
- 6 - Eggs of bombyx mori t.s.
- 7 - Eggs of hawk moth w.m.
- 8 - Eggs of Pieris rapae w.m.
- 9 - Eggs of pediculus humanus w.m.
- 10 - Eggs of pulex w.m.
- 11 - Pupa of anopheles w.m.
- 12 - Pupa of culex w.m.
- 13 - Pupa of aedes w.m.
- 14 - Pupa of musca domestica w.m.
- 15 - Larva of trombididae w.m.
- 16 - Larva of gamasidae w.m.
- 17 - Larva of anopheles w.m.
- 18 - Larva of culex w.m.
- 19 - Larva of aedes w.m.
- 20 - Larva of chironomus w.m.
- 21 - Gnathal segments of larva of bombyx mori w.m.
- 22 - Body wall of larva of bombyx mori t.s.
- 23 - Dorsal vessel of larva of bombyx mori t.s.
- 24 - Larva of bombyx mori w.m.
- 25 - One-year larva of bombyx mori w.m.
- 26 - Two-years larva of bombyx mori w.m.
- 27 - Three-years larva of bombyx mori w.m.
- 28 - Body of larva of hawk moth t.s.

PRICE LIST

Valid from May 2017

Cat.#	Product Name	Ex. Tax	Inc. Tax
JL-1CEG	The Animal Cell - 12 slides	\$155.48	\$171.03
JL-2CEG	The Plant Cell - 12 slides	\$91.22	\$100.34
JL-4CEG	The Sea Urchin Embryology (Psammechinus) - 12 slides	\$142.45	\$156.69
JL-5CEG	The Ascaris Megalocephala Embryology - 10 slides	\$138.64	\$152.50
JL-8CEG	The Pig Embryology (Sus scrofa) - 10 slides	\$168.61	\$185.47
JL-9CEG	Development of the Microspore Mother Cells of Liliium candidum - 12 slides	\$164.60	\$181.06
JL-1EM	The Microscopic Life in the Water, Part I - 25 slides	\$253.10	\$278.41
JL-2EM	The Microscopic Life in the Water, Part II - 25 slides	\$253.10	\$278.41
JL-3EM	Environment Part I - The Woods Consequences of Environmental Pollution - 20 slides	\$204.30	\$224.73
JL-4EM	Environment Part II - The Water Pollution, Problems and Results - 20 slides	\$205.60	\$226.16
JL-5EM	Environment Part III - Life in the Soil - 17 slides	\$176.97	\$194.67
JL-6EM	Environment Part IV - Air Pollution and Allergens - 15 slides	\$157.42	\$173.17
JL-7EM	Adaptation of Plants to Manner of Life and Environment - 50 slides	\$433.63	\$476.99
JL-8EM	Microscopic Organisms of Freshwater - 25 slides	\$250.51	\$275.56
JL-9EM	Microscopic Organisms of Seawater - 15 slides	\$163.94	\$180.33
JL-3MM	Wood Sections - 25 slides	\$253.12	\$278.43
JL-4MM	Textile Fibres and Fabrics - 25 slides	\$225.75	\$248.32
JL-9MM	Types of Paper - 25 slides	\$225.75	\$248.32
JL-10MM	Human Scalp and Hair - 12 slides	\$132.02	\$145.23
JL-12MM	Rocks and Minerals, Ground Thin Set No. 1 - 10 slides	\$367.75	\$404.53
JL-13MM	Rocks and Minerals, Ground Thin Set No. 2 - 10 slides	\$367.75	\$404.53
JL-14MM	Rocks and Minerals, Igneous Set No. 3 - 31 slides	\$991.85	\$1091.03
JL-15MM	Rocks and Minerals, Metamorphic Set No. 4 - 29 slides	\$938.42	\$1032.26
JL-16MM	Rocks and Minerals, Sedimentary Set No. 5 - 22 slides	\$723.50	\$795.85
JL-17MM	Rocks and Minerals, Meteorites Set No. 6 - 4 slides	\$159.45	\$175.39
CH-COMP1	Comparative Epithelium and Connective Tissue Slide Set - 28 slides	\$84.97	\$93.46
CH-COMP2	Comparative Muscular and Skeletal Tissue Slide Set - 18 slides	\$72.38	\$79.62
CH-COMP3	Comparative Nervous System Slide Set - 31 slides	\$130.60	\$143.66
CH-COMP4	Comparative Circulatory and Respiratory System Slide Set - 36 slides	\$119.69	\$131.66
CH-COMP5	Comparative Glands and the Immune System Slide Set - 35 slides	\$117.36	\$129.10
CH-COMP6	Comparative Digestive System Slide Set - 45 slides	\$148.33	\$163.17
CH-COMP7	Comparative Urinary and Reproductive System Slide Set - 58 slides	\$216.98	\$238.68
CH-COMP8	Comparative Integumentary and Sensory System Slide Set - 24 slides	\$106.96	\$117.65
CH-COMP9	Comparative Histology Large Slide Set 1 - 61 slides	\$211.03	\$232.14
CH-COMP10	Comparative Histology Large Slide Set 2 - 68 slides	\$268.35	\$295.18
CH-COMP11	Small Animal Histology Slide Set - 60 slides	\$184.55	\$203.01
CH-COMP12	Large Animal Histology Slide Set - 60 slides	\$179.31	\$197.24
CH-COMP13	Comparative Blood Slide Set - 14 slides	\$43.57	\$47.93
CH-GE1	Animal and Plant Genetics Slide Set - 17 slides	\$75.39	\$82.93
CH-EMB1	Frog Embryology Slide Set - 28 slides	\$161.59	\$177.75
CH-EMB2	Chicken Embryology Slide Set - 15 slides	\$118.75	\$130.63
CH-BP1	Fungi and Fungi Like Pathogens Slide Set - 66 slides	\$356.17	\$391.79
CH-BP2	Diseases of Cereals Slide Set - 44 slides	\$252.24	\$277.47
CH-BP3	Diseases of Oily Plants Slide Set - 22 slides	\$133.55	\$146.91
CH-BP4	Diseases of Fibre Crops and Tobacco Slide Set - 23 slides	\$135.34	\$148.87
CH-BP5	Diseases of Vegetables Slide Set - 55 slides	\$299.16	\$329.08

Cat.#	Product Name	Ex. Tax	Inc. Tax
CH-BP6	Diseases of Fruits Slide Set - 38 slides	\$217.88	\$239.67
CH-BP7	Large Plant Pathogen Slide Set - 105 slides	\$584.07	\$642.48
CH-BP8	Nematodes and Plant Pests Slide Set - 30 slides	\$199.67	\$219.64
CH-BT1	Leaf, Stem and Root Slide Set - 58 slides	\$158.56	\$174.41
CH-BT2	Algae Slide Set - 38 slides	\$113.79	\$125.17
CH-BT3	Fungi and Lichen Slide Set - 20 slides	\$65.69	\$72.26
CH-BT4	Bryophyta and Pteridophytes Slide Set - 36 slides	\$117.94	\$129.74
CH-BT5	Botany - Cells and Structures Slide Set - 37 slides	\$97.38	\$107.11
CH-BT6	Botany - Reproduction Slide Set - 39 slides	\$156.31	\$171.94
CH-BT7	Botany - Trees Slide Set - 55 slides	\$143.45	\$157.79
CH-BT8	Botany - Grains Slide Set - 41 slides	\$109.64	\$120.61
CH-BT9	Botany - Vegetables Slide Set - 66 slides	\$166.66	\$183.32
CH-BT10	Botany - Fruits Slide Set - 57 slides	\$155.04	\$170.54
CH-ZO1	Zoology - Porifera, Coelenterata and Echinodermata Slide Set - 28 slides	\$104.56	\$115.02
CH-ZO2	Zoology - Arthropoda Slide Set - 25 slides	\$119.60	\$131.56
CH-ZO3	Zoology - Diptera Slide Set - 43 slides	\$177.19	\$194.91
CH-ZO4	Zoology - Lepidoptera and Hymenoptera Slide Set - 30 slides	\$83.69	\$92.06
CH-ZO5	Zoology - Amphioxus Slide Set - 16 slides	\$73.25	\$80.58
CH-ZO6	Zoology - Fish Slide Set - 35 slides	\$123.16	\$135.47
CH-ZO7	Zoology - Amphibia and Reptilia Slide Set - 36 slides	\$104.38	\$114.82
CH-ZO8	Zoology - Birds Slide Set - 19 slides	\$52.91	\$58.20
CH-ZO9	Complete Vertebrate Slide Set - 88 slides	\$265.30	\$291.83
CH-ZO10	Complete Invertebrate Slide Set - 127 slides	\$444.36	\$488.80
CH-ZO11	Zoology - Insect Parts Slide Set - 41 slides	\$128.27	\$141.10
CH-ZO12	Zoology - Insect Life Cycles Slide Set - 28 slides	\$128.05	\$140.85

As prices can change without notice, please visit our site to download the latest version of this PDF catalogue, and Price List.
<http://www.msmedia.com.au/science-slides>