

## Viridans Wild Things of Victoria : Tutorial 3

### Task:

You are in north-western Victoria, near Boundary Bend, and you have found a small tree with white, five-petalled flowers and narrow, grey-green leaves, Use the identification aids in *Wild Plants of Victoria* to find out what it is.

- Find Boundary Bend on a map of Victoria in *Wild Plants of Victoria* (in the north-west on the Murray, just east of Robinvale).
- Select the grids which cover the town and surrounding area.
- Generate a list of all plant species found in the search area.
- Use the filters to select the characters, Large Shrub or Small Tree, Flowers with Five Petals, and Flowers White or Cream.
- View the results and examine each plant photograph and description to determine which is the best fit.

### The products of this task should be

- A printed page showing a photograph-description-map combination for *Geijera parviflora* (Wilga).

- Wild Plants of Victoria (Map Themes)
- Wild Plants of Victoria (Regional)
- Wild Plants of Victoria (Regional) - Low Contrast**
- Help
- Close

Select this option

## *Wild Plants of Victoria*



2012

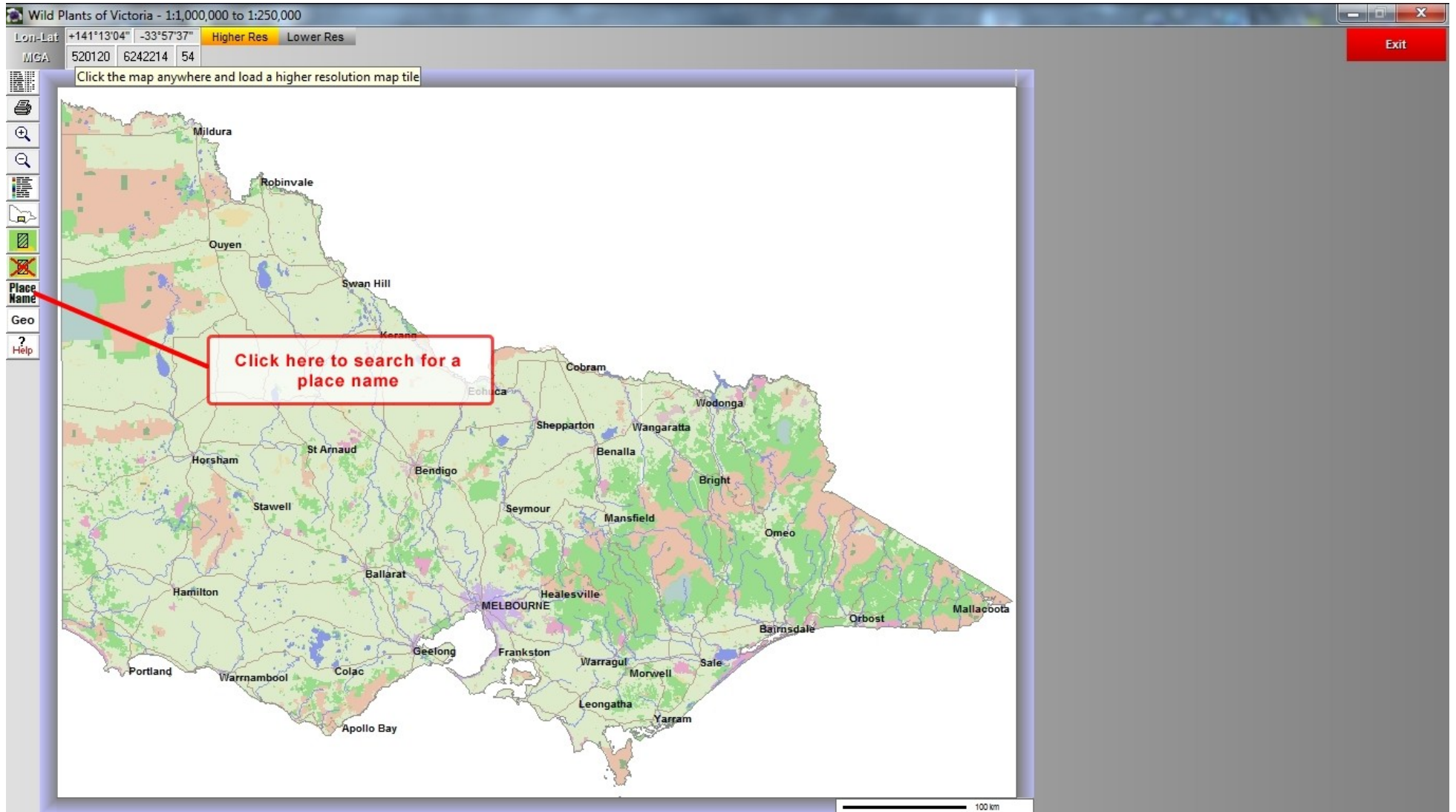
- Full Species List
- Area Species List
- Search an Area
- Help
- Close

Select this option

*Wild Plants of Victoria*



2012



e:\wpv2012\VIC\MAP250K\DULL09\VM02\_12.wmf

Lon-Lat +140°55'44" -35°13'27" Higher Res Lower Res

MGA 493529 6102081 54

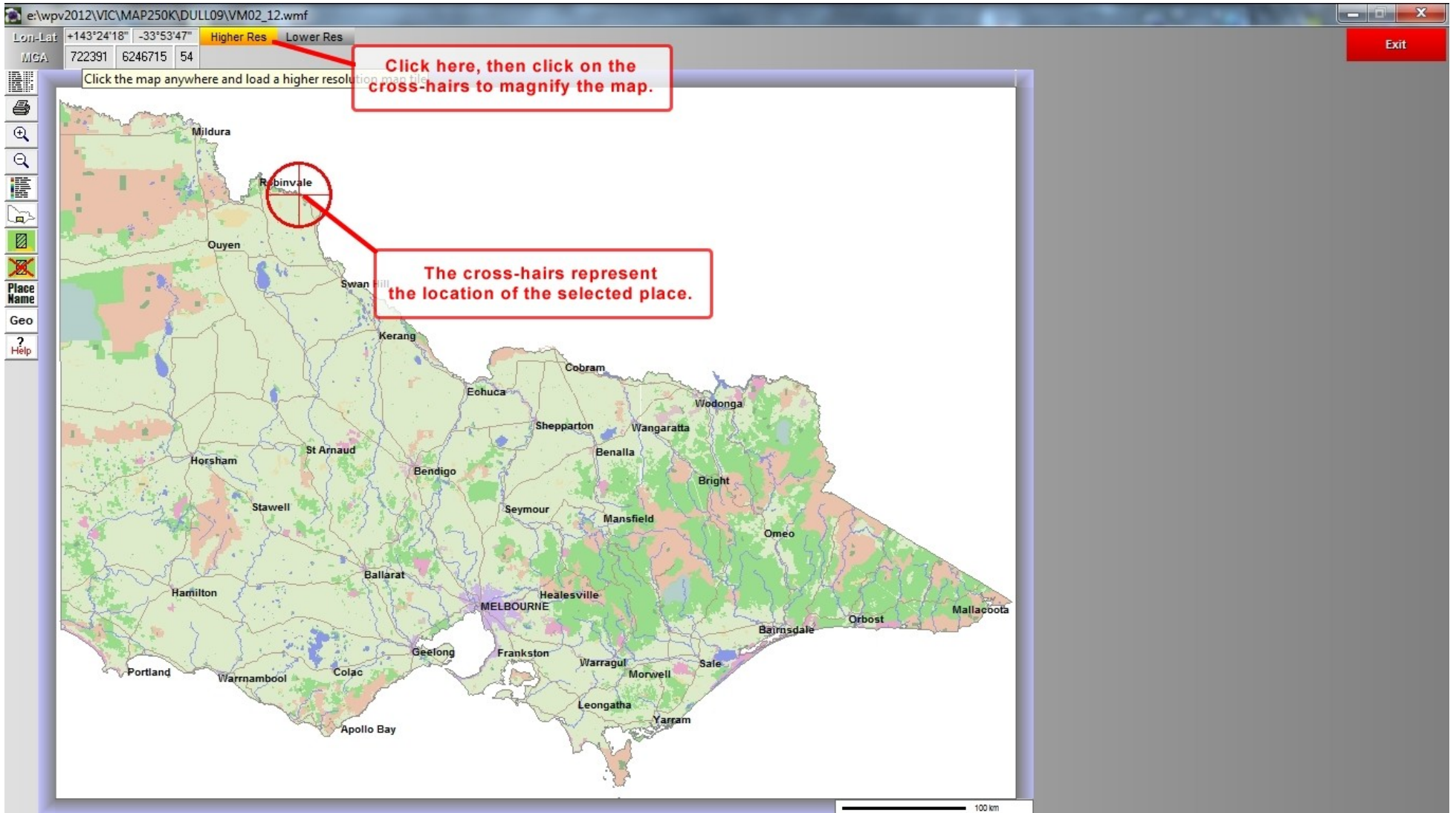
**Place Name Gazetteer**

Place Name boundary bend Find Cancel

Boundary Bend 1 (Town) : +143°08'42" 34°43'00" 1

**Enter the place name then click the 'Find' button**

The image shows a software interface for a map of Victoria, Australia. The main map displays various towns and regions, including Melbourne, Geelong, Ballarat, Bendigo, Shepparton, Wangaratta, Wodonga, Cobram, Echuca, Mansfield, Bright, Omeo, Bendigo, Stawell, Hamilton, Ballarat, Healesville, MELBOURNE, Frankston, Warragul, Morwell, Sale, Leongatha, Yarram, Apollo Bay, Geelong, Colac, Warrnambool, Portland, Bairnsdale, Orbost, and Mallacoota. A 'Place Name Gazetteer' dialog box is open, showing a search for 'boundary bend'. The dialog box has a 'Find' button and a 'Cancel' button. A red box highlights the search input and the 'Find' button, with a red arrow pointing to the search input and another pointing to the 'Find' button. A red box contains the text 'Enter the place name then click the 'Find' button'. The dialog box also shows the coordinates for 'Boundary Bend 1 (Town) : +143°08'42" 34°43'00" and a page number '1'. The main map has a scale bar for 100 km. The window title is 'e:\wpv2012\VIC\MAP250K\DULL09\VM02\_12.wmf'. The window has standard Windows controls (minimize, maximize, close) and an 'Exit' button in the top right corner. The interface includes a toolbar on the left with icons for zooming, panning, and other map functions. The status bar at the bottom shows the current coordinates and MGA values.



e:\wpv2012\VIC\MAP250K\DULL09\VM02\_12.wmf

Lon-Lat +144°24'30" -34°18'18" Higher Res Lower Res

MGA 261494 6200971 55

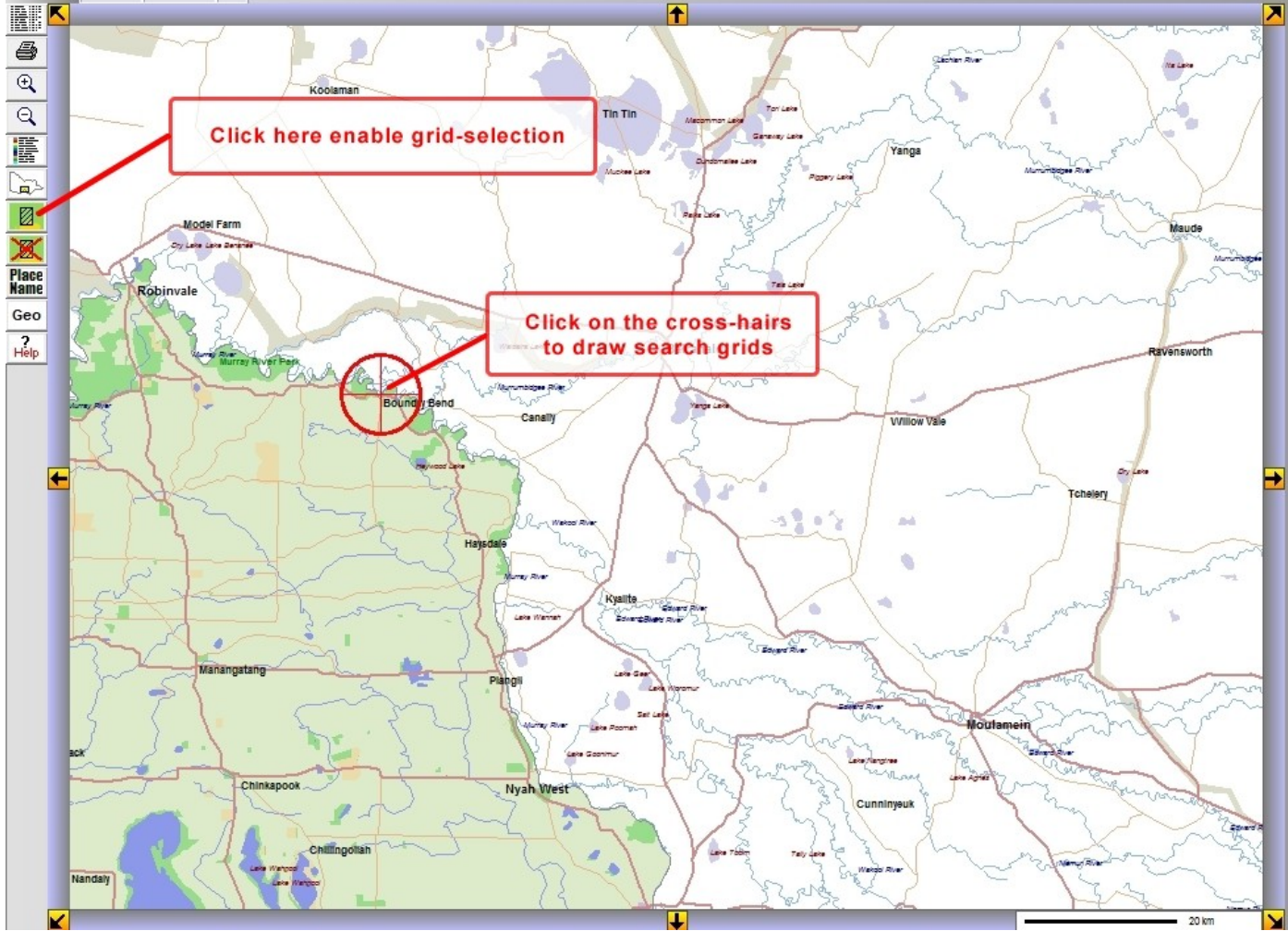


Exit

- Map navigation icons: Home, Previous, Next, Full Screen, Print, Zoom In, Zoom Out, Measure, Rotate, Refresh, Layer Control, Legend, Scale Bar, Help.
- Place Name
- Geo
- ?
- Help

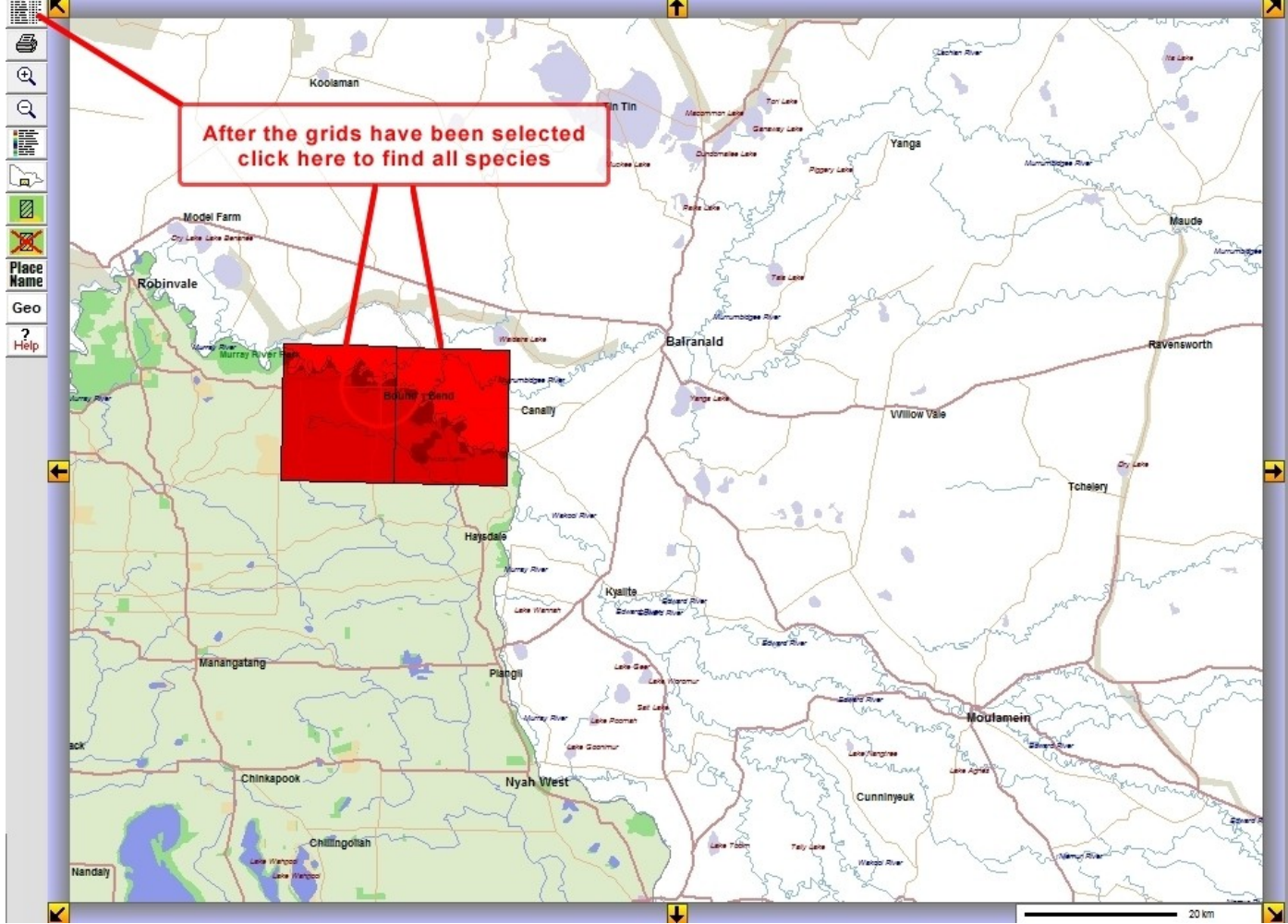
Click here enable grid-selection

Click on the cross-hairs to draw search grids



- Print
- Zoom In
- Zoom Out
- Home
- Layers
- Place Name
- Geo
- Help

After the grids have been selected  
click here to find all species





Enter Scientific Name  Find Name  Sort on Common Name

Scientific Name Order : Area List : 529 species

Click on column buttons for interpretation of this list

F	A	S	O	Scientific Name	Common Name	Family Name	Last Date
		v		<b>Abutilon otocarpum</b>	<b>Desert Lantern</b>	<b>Malvaceae</b>	<b>2000-2010</b>
				Acacia acinacea s.l.	Gold-dust Wattle	Mimosaceae	Undated
				Acacia brachybotrya	Grey Mulga	Mimosaceae	1990-1999
				Acacia hakeoides	Hakea Wattle	Mimosaceae	1970-1979
				Acacia halliana	Hall's Wattle	Mimosaceae	1990-1999
				Acacia ligulata	Small Cooba	Mimosaceae	1990-1999
		v		Acacia loderi	Nealie	Mimosaceae	Undated
		v		Acacia melvillei	Yarran	Mimosaceae	2000-2010
				Acacia montana		Mimosaceae	Undated
f		e		Acacia omalophylla		Mimosaceae	1970-1979
				Acacia oswaldii	Umbrella Wattle	Mimosaceae	2000-2010
				Acacia rigens	Nealie	Mimosaceae	2000-2010
				Acacia salicina	Willow Wattle	Mimosaceae	1990-1999
				Acacia sclerophylla var. sclerophylla	Hard-leaf Wattle	Mimosaceae	2000-2010
		#		Acacia stenophylla	Eumong	Mimosaceae	2000-2010
				Acacia wilhelmiana	Dwarf Nealie	Mimosaceae	2000-2010
		*		Acetosella vulgaris	Sheep Sorrel	Polygonaceae	Undated
				Actinobole uliginosum	Flannel Cudweed	Asteraceae	1990-1999
				Adriana urticoides	Eastern Bitter-bush	Euphorbiaceae	1990-1999
				Adriana urticoides var. beckeri	Mallee Bitter-bush	Euphorbiaceae	1990-1999

This display is a list of all species found in the two search grids that include Boundary Bend

Click here to select filter options

Exit

Help

Set Filters - Full

Apply Filters

Set Filters - Quick

Show Current Filters

Print or Export List in Alphabetic Order

Print or Export List in Systematic Order

Plot Distribution Map

Print Picture Text and Map

Display Larger Picture

Image 1 of 3

**General Appearance:** A shrub, to 70 cm tall, with large, soft leaves and yellow, bell-shaped flowers.

**Leaves:** Ovate, to 8 x 6 cm, both surfaces covered with glandular and stellate hairs; margins irregularly toothed.

**Flowers:** Yellow, bell-shaped, to 15 mm wide. Petals 5, obovate with rounded apex, slightly overlapping. Sepals 5, ovate, green, with prominent keels, giving the flower a distinctly 5-angled appearance in bud. (Jan Feb Dec)

**Fruit:** An ovoid capsule, to 10 mm long.

**Conservation:** [v] Vulnerable in Victoria.

**Other States:** NSW NT QLD SA WA ACT

**Annual Rainfall:** 283 to 309 mm

**Warmest Temperatures:** 33 °C

**Coolest Temperatures:** 4 °C

**Altitude:** 44 to 56 m ASL

**Other Scientific Names:** *Sida otocarpa*

**Other Common Names:** Desert Chinese lantern, Flannel Weed



Photographer: John Eichler/Viridans Images

Filter Groups	Filter Categories	List of Characters
<input checked="" type="radio"/> Characters Useful for Identification	<input checked="" type="radio"/> General Appearance	Large Tree
<input type="radio"/> Flower Characters	<input type="radio"/> Flower Type	<b>Large Shrub to Medium Tree</b>
<input type="radio"/> Leaf Characters	<input type="radio"/> Main Flower Colour	Mallee Tree
<input type="radio"/> Plant Classification	<input type="radio"/> Other Flower Colours	Shrub
<input type="radio"/> Conservation	<input type="radio"/> Leaf size	Small Shrub
<input type="radio"/> Weed Status	<input type="radio"/> Leaves toothed or lobed	Prostrate Shrub
<input type="radio"/> Uses	<input type="radio"/> Leaves divided into segments	Large Forb/Herb
<input type="radio"/> Miscellaneous Characters	<input type="radio"/> Leaves hairy	Medium Forb/Herb
	<input type="radio"/> Leaves fleshy or succulent	Small Forb/Herb
	<input type="radio"/> Fruit fleshy or succulent	Prostrate or Mat-forming Forb/Herb
	<input type="radio"/> Plants prickly or spiny	Large Tufted grass/sedge

**Filter Type**

All Categories

Any Categories

Save Filters and Exit

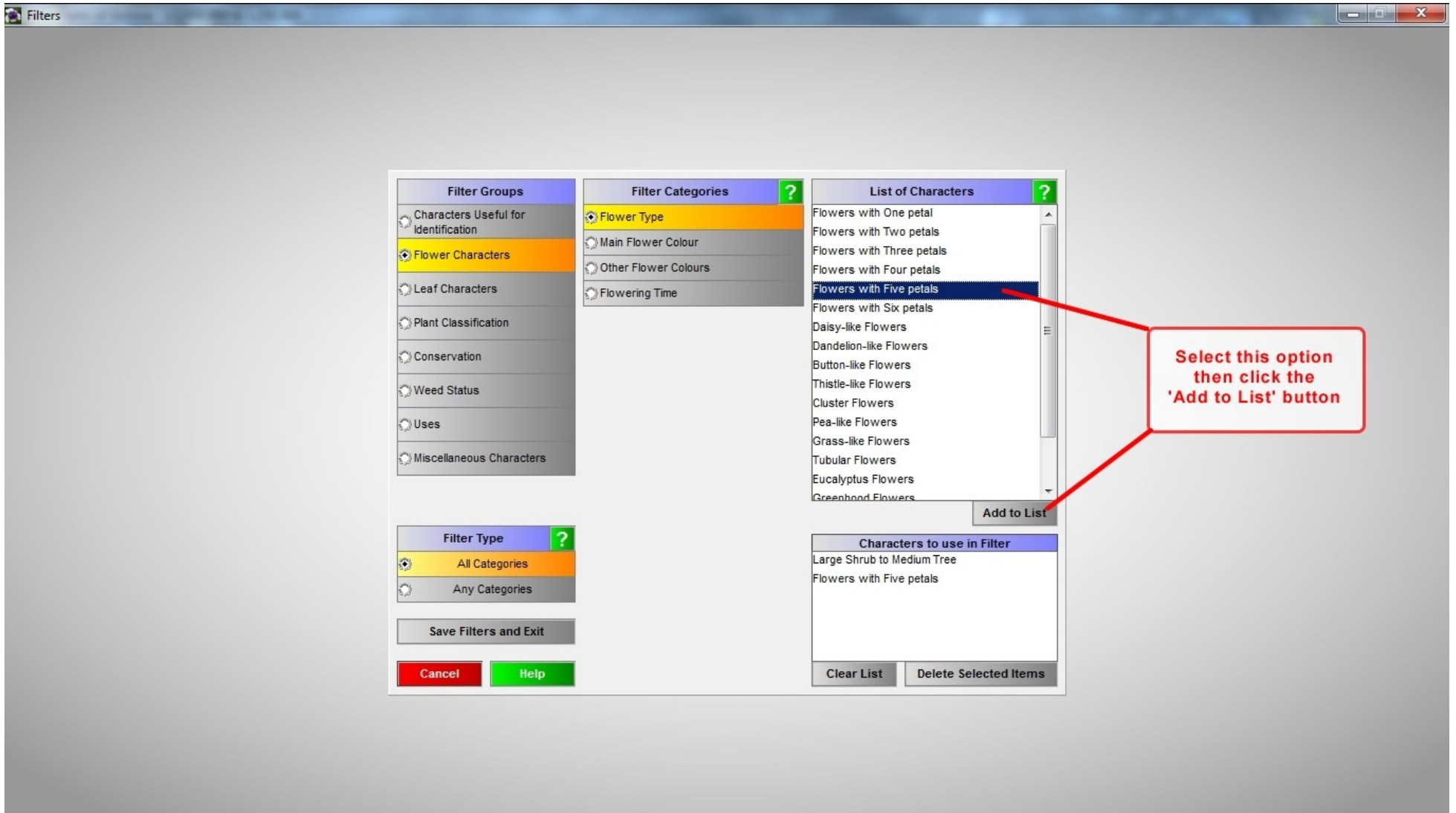
Cancel Help

**Characters to use in Filter**

Large Shrub to Medium Tree

Clear List Delete Selected Items

Select this option then click the 'Add to List' button



<b>Filter Groups</b>	<b>Filter Categories</b> ?	<b>List of Characters</b> ?
<input type="checkbox"/> Characters Useful for Identification	<input type="checkbox"/> Flower Type	Flowers all or mostly Black
<input checked="" type="checkbox"/> <b>Flower Characters</b>	<input checked="" type="checkbox"/> <b>Main Flower Colour</b>	Flowers all or mostly Blue
<input type="checkbox"/> Leaf Characters	<input type="checkbox"/> Other Flower Colours	Flowers all or mostly Brown
<input type="checkbox"/> Plant Classification	<input type="checkbox"/> Flowering Time	Flowers all or mostly Green
<input type="checkbox"/> Conservation		Flowers all or mostly Orange
<input type="checkbox"/> Weed Status		Flowers all or mostly Pink
<input type="checkbox"/> Uses		Flowers all or mostly Purple or Mauve
<input type="checkbox"/> Miscellaneous Characters		Flowers all or mostly Red
		<b>Flowers all or mostly White or Cream</b>
		Flowers all or mostly Yellow
		<input type="button" value="Add to List"/>
<b>Filter Type</b> ?	<b>Characters to use in Filter</b>	
<input checked="" type="checkbox"/> All Categories	Large Shrub to Medium Tree	
<input type="checkbox"/> Any Categories	Flowers with Five petals	
<input type="button" value="Save Filters and Exit"/>	Flowers all or mostly White or Cream	
<input type="button" value="Cancel"/> <input type="button" value="Help"/>	<input type="button" value="Clear List"/> <input type="button" value="Delete Selected Items"/>	

Select this option then click the 'Add to List' button

Click here to return to the species list

Enter Scientific Name  Find Name  Sort on Common Name

Scientific Name Order : Area List : 529 species

Click on column buttons for interpretation of this list

F	A	S	O	Scientific Name	Common Name	Family Name	Last Date
		v		<b>Abutilon otocarpum</b>	<b>Desert Lantern</b>	<b>Malvaceae</b>	<b>2000-2010</b>
				Acacia acinacea s.l.	Gold-dust Wattle	Mimosaceae	Undated
				Acacia brachybotrya	Grey Mulga	Mimosaceae	1990-1999
				Acacia hakeoides	Hakea Wattle	Mimosaceae	1970-1979
				Acacia halliana	Hall's Wattle	Mimosaceae	1990-1999
				Acacia ligulata	Small Cooba	Mimosaceae	1990-1999
		v		Acacia loderi	Nealie	Mimosaceae	Undated
		v		Acacia melvillei	Yarran	Mimosaceae	2000-2010
				Acacia montana	Mallee Wattle	Mimosaceae	Undated
f		e		Acacia omalophylla	Yarran Wattle	Mimosaceae	1970-1979
				Acacia oswaldii	Umbrella Wattle	Mimosaceae	2000-2010
				Acacia rigens	Nealie	Mimosaceae	2000-2010
				Acacia salicina	Willow Wattle	Mimosaceae	1990-1999
				Acacia sclerophylla var. sclerophylla	Hard-leaf Wattle	Mimosaceae	2000-2010
		#		Acacia stenophylla	Eumong	Mimosaceae	2000-2010
				Acacia wilhelmiana	Dwarf Nealie	Mimosaceae	2000-2010
		*		Acetosella vulgaris	Sheep Sorrel	Polygonaceae	Undated
				Actinobole uliginosum	Flannel Cudweed	Asteraceae	1990-1999
				Adriana urticoides	Eastern Bitter-bush	Euphorbiaceae	1990-1999
				Adriana urticoides var. beckeri	Mallee Bitter-bush	Euphorbiaceae	1990-1999

Click here to invoke the selected filters

Exit

Help

Set Filters - Full

Apply Filters

Set Filters - Quick

Show Current Filters

Print or Export List in Alphabetic Order

Print or Export List in Systematic Order

Plot Distribution Map

Print Picture Text and Map

Display Larger Picture

Image 1 of 3

**General Appearance:** A shrub, to 70 cm tall, with large, soft leaves and yellow, bell-shaped flowers.

**Leaves:** Ovate, to 8 x 6 cm, both surfaces covered with glandular and stellate hairs; margins irregularly toothed.

**Flowers:** Yellow, bell-shaped, to 15 mm wide. Petals 5, obovate with rounded apex, slightly overlapping. Sepals 5, ovate, green, with prominent keels, giving the flower a distinctly 5-angled appearance in bud. (Jan Feb Dec)

**Fruit:** An ovoid capsule, to 10 mm long.

**Conservation:** [v] Vulnerable in Victoria.

**Other States:** NSW NT QLD SA WA ACT

**Annual Rainfall:** 283 to 309 mm

**Warmest Temperatures:** 33 °C

**Coolest Temperatures:** 4 °C

**Altitude:** 44 to 56 m ASL

**Other Scientific Names:** *Sida otocarpa*

**Other Common Names:** Desert Chinese lantern, Flannel Weed



Photographer: John Eichler/Viridans Images

Highlight any technical word then right-click mouse to find its meaning

Wild Plants of Victoria - 1:1,000,000 to 1:250,000

Enter Scientific Name  Find Name Sort on Common Name

Scientific Name Order : Area List : Filtered : 6 species

Click on column buttons for interpretation of this list

F	A	S	O	Scientific Name	Common Name	Family Name	Last Date
				Bursaria spinosa subsp. spinosa	Sweet Bursaria	Pittosporaceae	1990-1999
f	e			<b>Geijera parviflora</b>	Wilga	Rutaceae	2000-2010
		r		Myoporum montanum	Waterbush	Myoporaceae	Pre 1900
				Myoporum platycarpum	Sugarwood	Myoporaceae	2000-2010
				Myoporum platycarpum subsp. perbellum	Sugarwood	Myoporaceae	1990-1999
		*		Schinus molle	Pepper Tree	Anacardiaceae	1980-1989

Examine the pictures and descriptions of the six species which fulfill all the filter criteria. Note that *Geijera parviflora* best matches the description of the plant.

Click here to display a summary page for the species

**General Appearance:** A small tree, to 8 m tall, with long, narrow, drooping leaves, and large panicles of small, white flowers.

**Leaves:** Linear or narrowly lanceolate, alternate, to 18 x 1 cm, hairless, slightly glossy.

**Flowers:** White, star-shaped, to 5 mm wide. Petals 5, ovate. Sepals 5, narrow, to 1 mm long, hairy on margins. (Jul Aug Sep Oct)

**Fruit:** A globular capsule, to 5 mm wide.

**Environment:** Sandy soils with open woodlands, in lower rainfall areas.

**Conservation:** [f] Listed under the Victorian Flora and Fauna Guarantee. [e] Endangered in Victoria.

**Other States:** NSW QLD SA

**Annual Rainfall:** 301 to 307 mm

**Warmest Temperatures:** 33 °C

**Coollest Temperatures:** 4 °C

**Altitude:** 58 to 60 m ASL

Create and print the selected image and text in an A4 format

Print Picture Text and Map

Photographer: Paul Gullan/Viridans Images

Image 1 of 1

- Print
- Printer Setup
- Reset Picture
- Reset Map
- Help
- Exit

Click here to send this display to a printer

### f e *Geijera parviflora* - Wilga

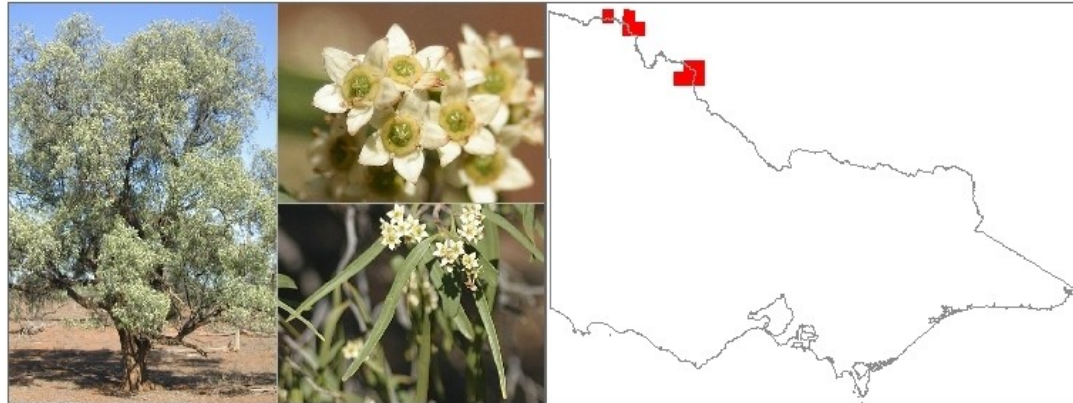


Photo by: Paul Gullan/Viridans Images

**General Appearance:** A small tree, to 8 m tall, with long, narrow, drooping leaves, and large panicles of small, white flowers.

**Leaves:** Linear or narrowly lanceolate, alternate, to 18 x 1 cm, hairless, slightly glossy.

**Flowers:** White, star-shaped, to 5 mm wide. Petals 5, ovate. Sepals 5, narrow, to 1 mm long, hairy on margins. (Jul Aug Sep Oct)

**Fruit:** A globular capsule, to 5 mm wide.

**Environment:** Sandy soils with open woodlands, in lower rainfall areas.

**Conservation:** [f] Listed under the Victorian Flora and Fauna Guarantee. [e] Endangered in Victoria.

**Other States:** NSW QLD SA

**Annual Rainfall:** 301 to 307 mm

**Warmest Temperatures:** 33 °C

**Coollest Temperatures:** 4 °C

**Altitude:** 58 to 60 m ASL

© Viridans Biological Databases