

CYLINDROSPORIUM LEAF SPOT OR YELLOW LEAF ON CHERRY CAUSE: CYLINDROSPORIUM PADI, A FUNGUS

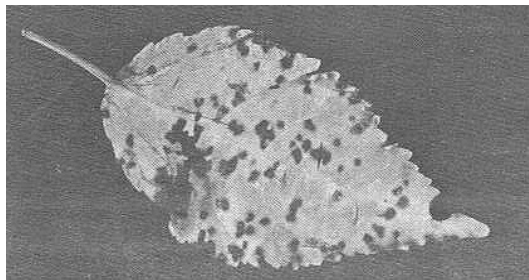


Figure 1. Shothole Leaf Symptom on Cherry caused by *Cylindrosporium padi*.

This disease can be very serious on young cherry seedlings in nurseries. It causes leaf spots and severe defoliation; the disease in combination with winter injury may possibly result in death of young seedlings. The fungus attacks most of the wild and cultivated species of *Prunus* except peaches.

Leaf spots develop on the seedlings in late May. The leaf spots remain small even when the infection is heavy; in later stages of infection, the leaf spots die and fall out leaving holes in the leaf (shothole effect). The fungus mycelium and spores develop on the lower surface of the leaf, giving a whitish, mildew like appearance.

The fungus overwinters on the fallen leaves in the sexual stage known as *Coccomyces hiemalis*. The resulting sexual spores, known as ascospores, are primarily responsible for the early spring leaf spot infection on the new leaves. Spring temperatures from 60-70° F are ideal for infection and disease development.

Continued infection during the growing season is primarily caused by asexual spores (conidia) of the fungus. Infection may be especially severe during periods of rain or when overhead sprinkler irrigation is used; the infection tapers off during hot, dry summer periods.

Pesticide Use - Due to constantly changing laws and regulations, no liability for the suggested use of chemicals in this Newsletter is assumed by the ONW Newsletter. Pesticides should be applied according to label directions on the pesticide container.

Permission to Reprint material appearing in the ONW Newsletter is granted with the request that you credit the source: Ornamentals Northwest Newsletter, date, volume, issue, page numbers. Do not excerpt or reprint in such a manner as to imply the author's endorsement or criticism of a product or concept.

Nondiscrimination - The information in the Ornamentals Northwest Newsletter is provided with the understanding that no discrimination is intended and that listing of commercial products implies no endorsement by the authors. Criticism of products or equipment is neither intended nor implied.