

DALE WALTERS

FORTRESS PLANT

*How to survive
when everything
wants to eat you*



FORTRESS PLANT

DALE WALTERS

FORTRESS PLANT

How to survive when everything
wants to eat you

OXFORD
UNIVERSITY PRESS

OXFORD

UNIVERSITY PRESS

Great Clarendon Street, Oxford, OX2 6DP,
United Kingdom

Oxford University Press is a department of the University of Oxford.
It furthers the University's objective of excellence in research, scholarship,
and education by publishing worldwide. Oxford is a registered trade mark of
Oxford University Press in the UK and in certain other countries

© Dale Walters 2017

The moral rights of the author have been asserted

First Edition published in 2017

Impression: 1

All rights reserved. No part of this publication may be reproduced, stored in
a retrieval system, or transmitted, in any form or by any means, without the
prior permission in writing of Oxford University Press, or as expressly permitted
by law, by licence or under terms agreed with the appropriate reprographics
rights organization. Enquiries concerning reproduction outside the scope of the
above should be sent to the Rights Department, Oxford University Press, at the
address above

You must not circulate this work in any other form
and you must impose this same condition on any acquirer

Published in the United States of America by Oxford University Press
198 Madison Avenue, New York, NY 10016, United States of America

British Library Cataloguing in Publication Data
Data available

Library of Congress Control Number: 2016953029

ISBN 978-0-19-874560-0

Printed in Great Britain by
Clays Ltd, St Ives plc

Links to third party websites are provided by Oxford in good faith and
for information only. Oxford disclaims any responsibility for the materials
contained in any third party website referenced in this work.

For Beverley

ACKNOWLEDGEMENTS

I first thought about writing this book nearly twenty years ago when I was walking the dogs. But then my work commitments increased hugely and, reluctantly, I had to put the idea to one side. When I eventually got round to the book again, not only had the field of plant defence moved on, but I began to question whether any publisher would be willing to take on a book on this subject. Here I got lucky, because I sent some material to Latha Menon at OUP and, to my amazement and delight, she was encouraging. That encouragement led to a contract with OUP, culminating in the volume you now hold in your hands. I am grateful to Latha, not just for taking on this project, but for her support and careful editing. Others at OUP have provided support and answers to my numerous questions, and my thanks go especially to Jenny Nugee, who has the patience of a saint, and to Martha Cunneen, Carrie Hickman, Clare Jones, and Phil Henderson. Thanks also to Elizabeth Stone for her meticulous copy-editing, and Nicola Sangster for proofreading. During the writing of this book I have been helped by a number of people who answered queries, provided images and offered to read what I had written. I am grateful to Pietro Spanu, Angela Overmeyer, Richard O'Connell, Danny Kessler, Jonathan Gershenson, Ian Grettenberger, Gerald Holmes, Martin Heil, Francis Martin, Mark Brundrett, Simon Walker, Allan Downie, John Randles, Stuart MacFarlane, Harry Evans, Neil Havis, and Graham McGrann. Parts of the text deal with historical aspects of research in specific areas. I have tried my best to get things right but I'm sure not everyone will agree with what I've written. Any errors of fact are mine alone.

When I started writing this book, I was still working and I am grateful to two successive Heads of Department (Bill Spoor and Fiona Burnett) for allowing me the freedom to pursue this venture. My special thanks, however, go to my wife Beverley. She has provided unwavering support and

ACKNOWLEDGEMENTS

encouragement through every step of this journey, as she has for the past 43 years of our life together. How she put up with me while I wrote this book, when she herself was ill, is beyond me. Thanks are simply not enough.

DALE WALTERS

Prestwick

July 2016

CONTENTS

<i>List of Figures</i>	xi
<i>List of Plates</i>	xiii
<i>Abbreviations</i>	xvii
Prologue	1
1. How to get your five-a-day	3
2. Recognizing the enemy	12
3. Call to arms	31
4. Weapons of war	53
5. Deadly chemistry	76
6. A little help from your friends	99
7. The never-ending struggle	123
8. Martial arts for plants	146
Epilogue	174
<i>Glossary</i>	177
<i>References</i>	183
<i>Index</i>	205

LIST OF FIGURES

- 1 Diagram illustrating the relatively simple cell structure of a prokaryote and the more complex cellular makeup of a eukaryote. 6
- 2 Relative sizes of a plant cell, a bacterial cell, and a virus particle (*Tobacco mosaic virus*). 8
- 3 Electron microscopy image of particles of the *Pea early-browning virus*.
Courtesy of Stuart MacFarlane 9
- 4 The fungus *Colletotrichum kahawae* on the surface of a coffee berry.
Silva MC & Várzea VMP (2006) Coffee berry disease (*Colletotrichum kahawae*). Updated on 10/1/2006 3:32:15 PM Available online: PaDIL - <http://www.padil.gov.au>. Used under the Creative Commons Attribution 3.0 Australia License 16
- 5 *Escherichia coli* bacteria around a stomatal opening on a lettuce leaf.
© SCIMAT/Science Photo Library 21

LIST OF PLATES

Black and white plates

1. Powdery mildew haustorium.
Ralph Dean, Jan A. L. Van Kan, Zacharias A. Pretorius, Kim E. Hammond-Kosack, Antonio Di Pietro, Pietro D. Spanu, Jason J. Rudd, Marty Dickman, Regine Kahmann, Jeff Ellis, Gary D. Foster; 'The Top 10 fungal pathogens in molecular plant pathology', *Molecular Plant Pathology*, John Wiley and Sons, Apr 4, 2012. Courtesy of Pietro Spanu and John Wiley and Sons
2. Soft rot of potato.
Courtesy of G. J. Holmes
3. Trichome on tomato leaf.
© Gerd Guenther/Science Photo Library
4. The goldenrod gall fly, *Eurosta solidaginis*.
Figure 1A in Anjel M. Helms, Consuelo M. De Moraes, John F. Tooker, and Mark C. Mescher (2013) Exposure of *Solidago altissima* plants to volatile emissions of an insect antagonist (*Eurosta solidaginis*) deters subsequent herbivory. *PNAS* vol. 110 no. 1, 199–204, doi: 10.1073/pnas.1218606110. Photo courtesy of Ian Grettenberger
5. Gall on a goldenrod plant.
Figure 1B in Anjel M. Helms, Consuelo M. De Moraes, John F. Tooker, and Mark C. Mescher (2013) Exposure of *Solidago altissima* plants to volatile emissions of an insect antagonist (*Eurosta solidaginis*) deters subsequent herbivory. *PNAS* vol. 110 no. 1, 199–204, doi: 10.1073/pnas.1218606110. Photo courtesy of Ian Grettenberger
6. Papilla produced by a barley leaf cell in response to attempted powdery mildew infection.
Photo courtesy of Ralph Hueckelhoven
7. Callose nanopores.
Reprinted by permission from Macmillan Publishers Ltd: *Scientific Reports*, Dennis Eggert, Marcel Naumann, Rudolph Reimer, Christian A. Voigt, 'Nanoscale glucan polymer network causes pathogen resistance'. Copyright (2014), figures 1 and 3

LIST OF PLATES

8. Hooked trichomes on *Mentzelia pumila*.
Figure 2A,D from Thomas Eisner, Maria Eisner, and E. Richard Hoebeke (1998) When defense backfires: detrimental effect of a plant's protective trichomes on an insect beneficial to the plant. PNAS vol. 95, 4410–14. Copyright (1998) National Academy of Sciences, U.S.A.
9. Feeding pattern of a cotton bollworm larva.
Photo courtesy of Danny Kessler
10. Arbuscule of *Glomus*.
Photo courtesy of Mark Brundrett
11. Infection thread in root hair of vetch following infection by *Rhizobium*.
Photo courtesy of Simon Walker and Allan Downie
12. Caterpillars on a leaf.
© 123rf/ Song Qiuju

Colour plates

13. Septoria on wheat.
Courtesy of Neil Havis, SRUC
14. Locusts on a leaf.
Taken from Stockarch.com <<http://stockarch.com/images/nature/animals/small-locusts-green-leaves-4242/> | CC-BY-3.0/
<https://creativecommons.org/licenses/by/3.0/>>
15. Pea aphid.
Courtesy of Sipher Wu (photograph) and Gee-way Lin (aphid provision)/ <[https://commons.wikimedia.org/wiki/File:Acyrtosiphon_pisum_\(pea_aphid\)-PLoS.jpg](https://commons.wikimedia.org/wiki/File:Acyrtosiphon_pisum_(pea_aphid)-PLoS.jpg) | CC-BY-3.0/>
<<https://creativecommons.org/licenses/by/3.0/>>
16. Rust, *Puccinia hordei* on barley.
Courtesy of Neil Havis, SRUC
17. *Spodoptera littoralis* on an *Arabidopsis* leaf.
© Sandra Scholz/Monika Heyer, Max Planck Institute for Chemical Ecology, Jena, Germany
18. Image showing the amounts of light accumulated over a period of 30 minutes, revealing the changing calcium concentrations.
© Victoria Kiep, Martin Luther University, Halle-Wittenberg; Jyothilakshmi Vadassery, Max Planck Institute for Chemical Ecology, Jena, Germany

LIST OF PLATES

19. *Cotesia glomerata* laying its eggs in a larva of the cabbage white butterfly.
Photo courtesy of Hans Smid
20. Hypersensitive response of a barley leaf cell to attempted powdery mildew infection.
Photo courtesy of Ralph Hueckelhoven
21. Fruiting bodies of the ectomycorrhizal fungus, *Laccaria amethystina*.
Photo courtesy of Francis Martin
22. Transverse section of a poplar root tip showing its association with an ectomycorrhizal fungus (*Laccaria*).
Photo courtesy of Francis Martin
23. *Pseudomyrmex* ants visiting extrafloral nectaries on *Acacia hindsii*.
Photo courtesy of Martin Heil
24. Coffee rust, *Hemileia vastatrix*.
Photo courtesy of Harry C. Evans

ABBREVIATIONS

ATP	Adenosine triphosphate
DAMP	Damage-associated molecular pattern
ETI	Effector-triggered immunity
GLR genes	GLUTAMATE RECEPTOR-LIKE genes
HAMP	Herbivore-associated molecular pattern
HCD	Hypersensitive cell death
HR	Hypersensitive response
JA-Ile	Jasmonyl-isoleucine
LRR	Leucine rich repeat
PAMP	Pathogen-associated molecular pattern
PGIP	Polygalacturonase-inhibiting protein
PTI	PAMP-triggered immunity
ROS	Reactive oxygen species
RNA	Ribonucleic acid
SAR	Systemic acquired resistance
TIR	Toll interleukin receptor
TMV	<i>Tobacco mosaic virus</i>
WASP	Wound-activated surface potential

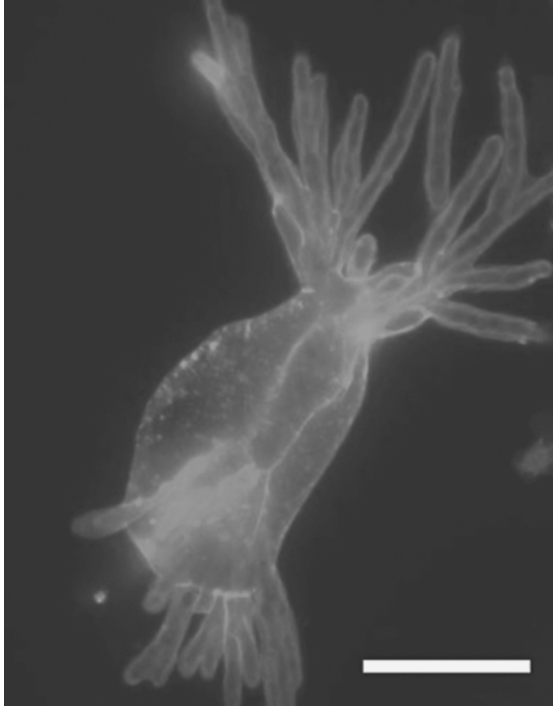


Plate 1 Powdery mildew haustorium. The powdery mildew fungus is a biotroph—it needs to keep host cells alive in order to survive. The haustorium is its feeding structure and the finger-like projections increase the surface area available for nutrient uptake from the host plant.

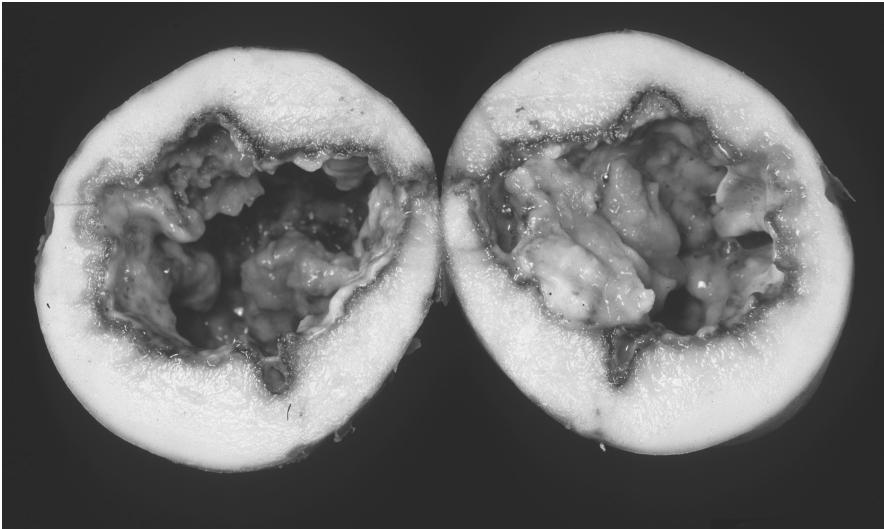


Plate 2 Soft rot of potato. Soft rot is caused by *Pectobacterium carotovorum*. It uses enzymes to break down plant cell walls, resulting in a soft mass of rotting and smelly plant tissue.

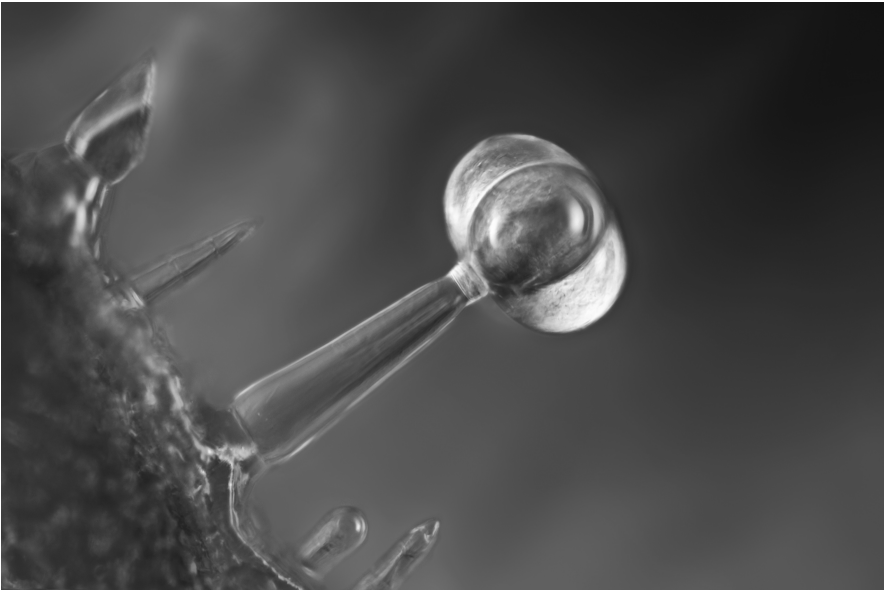


Plate 3 Light micrograph of a glandular hair (trichome) on a tomato leaf. The four secretory cells at the tip of the trichome contain essential oils important in defence against pests. The typical smell of tomato plants depends on these oils.



Plate 4 Goldenrod gall fly (*Eurosta solidaginis*). This insect lays its eggs in buds of the goldenrod plant, *Solidago altissima*, leading to the formation of galls.



Plate 5 Gall on a goldenrod plant (*Solidago altissima*) caused by the goldenrod gall fly *Eurosta solidaginis*.

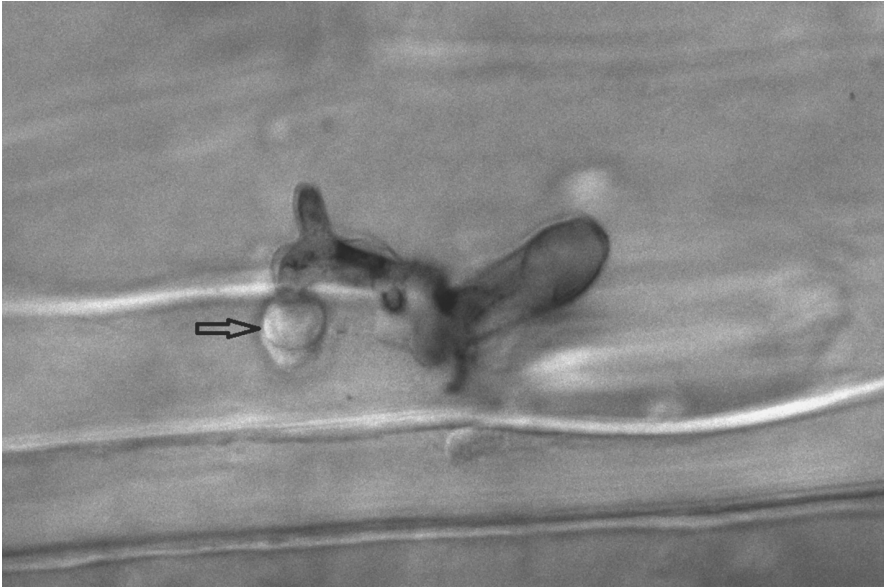


Plate 6 Papilla. This is a structural barrier produced by a plant cell in response to attack by a fungus. Here, the papilla is produced by a barley leaf cell in response to attempted penetration by the powdery mildew fungus, *Blumeria graminis* f.sp. *hordei*. Papillae are composed of the carbohydrate callose and can be impregnated with additional chemicals, such as phenolics and lignin.

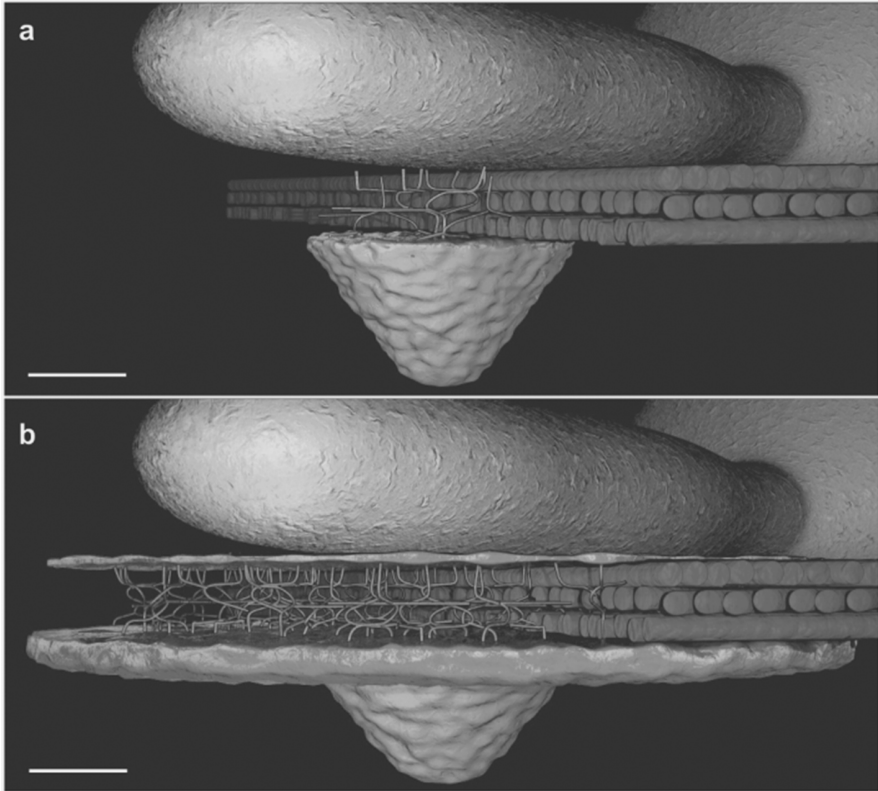


Plate 7 A 3D model of callose deposition at the site of attempted fungal penetration. The model represents the formation of callose deposits, callose/cellulose polymer networks, and superficial callose layers at sites of attempted fungal penetration six hours following attack in (a), *Arabidopsis thaliana* and (b), a mutant of *A. thaliana* expressing penetration-resistance to powdery mildew. Underneath the fungal infection structure the plant cell has responded by depositing a layer of callose and a network of callose and cellulose. The response is considerably greater in the plant exhibiting enhanced penetration resistance (b). Scale bars = 2 μm .



Plate 8 Hooked trichomes on *Mentzelia pumila* and fly trapped on a trichome-covered leaf.

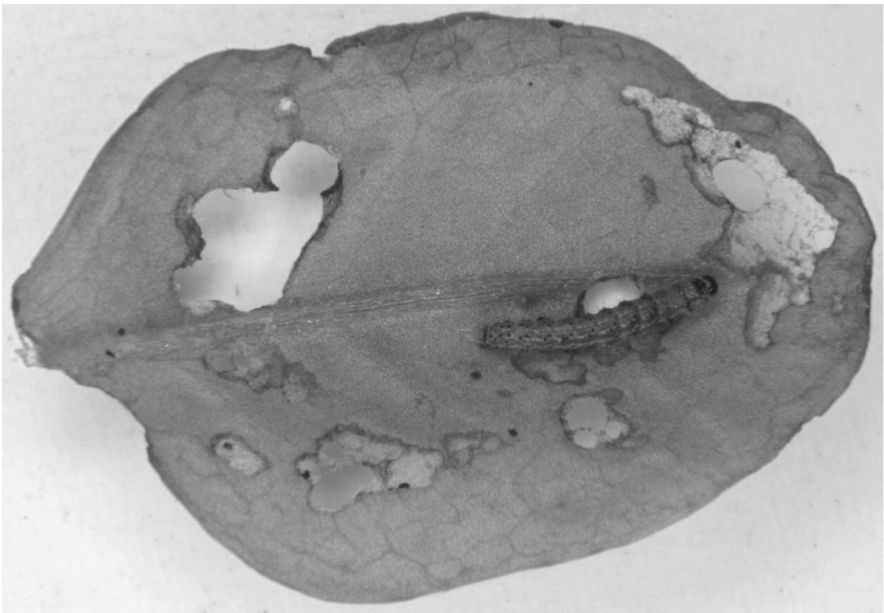


Plate 9 Feeding pattern of larvae of the cotton bollworm, *Helicoverpa armigera* on a leaf of *Arabidopsis thaliana*. Larvae of the cotton bollworm avoid feeding on the midvein and periphery of rosette leaves of *Arabidopsis* and feed instead on the inner lamina of the leaves. This feeding pattern enables the larvae to avoid toxic glucosinolates which are more abundant in the tissues of the midvein and leaf periphery than the inner lamina.



Plate 10 Highly magnified view of an arbuscule of an arbuscular mycorrhizal fungus belonging to the genus *Glomus*. This structure, which resembles a cauliflower floret, has a greatly increased surface area for effective nutrient exchange between the plant and fungal partners.

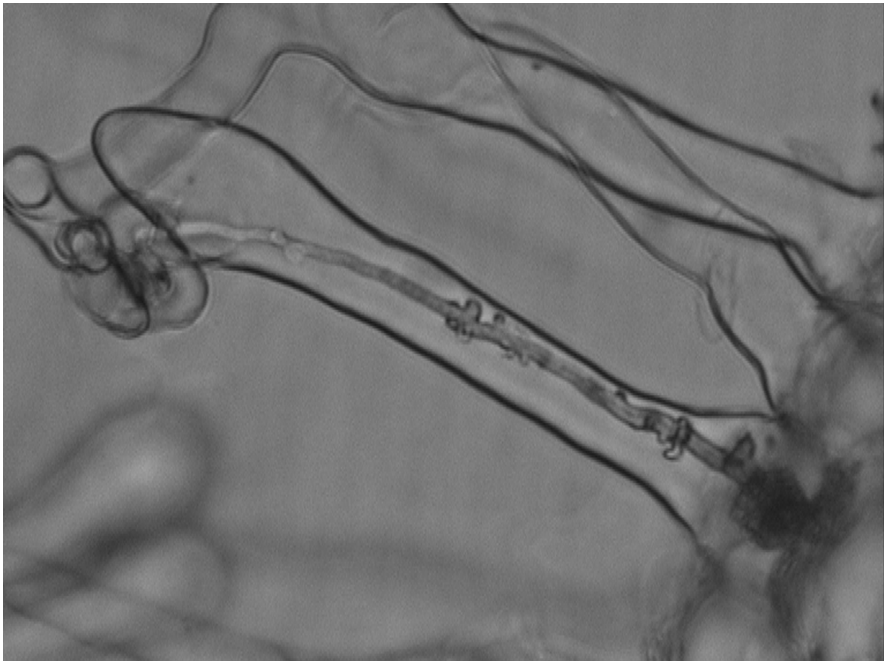


Plate 11 Light microscopy photograph of an infection thread in a root hair of the vetch *Vicia hirsuta* following infection by the nitrogen-fixing bacterium *Rhizobium leguminosarum* biovar *viciae*.