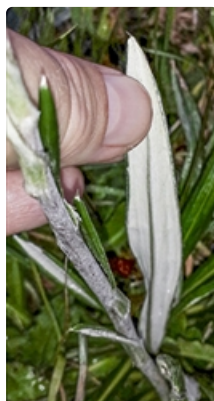


# Plants of South Eastern New South Wales



Flowering plant. Photographer Don Wood, Namadgi National Park, ACT



Leaf lower surface. Photographer Russell Best, Bogong High Plains, Vic

## Common name

A snow daisy

## Family

Asteraceae

## Where found

Dry **forest**, **woodland**, **heath**, **herbfields**, and *Sphagnum* bogs. Kosciuszko National Park, the mountains to the north, and ACT. Between Oberon and Jenolan Caves.

## Notes

**Perennial** herb with thin scaly **rhizomes**. **Scapes woolly**, to 0.60 high. Leaves basal, forming a **rosette**, 5–30 cm long, 1.5–25 mm wide, upper surface dark green to grey-green, lower surface with a thin silvery membranous cover rupturing to reveal a very short, dull **tomentum** of cream to greyish hairs, margins curved or rolled down, bases with a broad **sheath**. Flower **heads** 60–80 mm in diameter overall, with many '**petals**', white, usually mauve-tipped on the underside, and yellow centres. Flowers December to February.

All native plants on unleased land in the ACT are protected.

Rare Vic.

PlantNET description: <http://plantnet.rbgsyd.nsw.gov.au/cgi-bin/NSWfl.pl?page=nswfl&lvl=sp&name=Celmisia-tomentella> (accessed 7 January, 2021)

Author: Betty Wood.

This identification key and fact sheets are available as a free mobile application:



Creative Commons Attribution 3.0 Australia (CC BY)



Android edition



iOS edition