



Appendices

ลิขสิทธิ์มหาวิทยาลัยเชียงใหม่

Copyright© by Chiang Mai University
All rights reserved

APPENDIX A

Some new fungi described on palm material and published between 1991 to 2010.

Year	Fungus	Host	References	Note
1991	<i>Capitorostrum cocoes</i>	<i>Cocos nucifera</i>	Hyde and Philemon, 1991	parasite
	<i>Fasciatispora nypae</i>	<i>Nypa fruticans</i>	Hyde, 1991	
1992	<i>Astrosphaeriella nipicola</i>	<i>Nypa fruticans</i>	Hyde, 1992b	
	<i>Astrosphaeriella striataspora</i>	-	Hyde, 1992b	
	<i>Linocarpon bipolare</i>	<i>Nypa fruticans</i> :	Hyde, 1992a	
	<i>Linocarpon longisporum</i>	<i>Nypa fruticans</i>	Hyde, 1992a	
	<i>Neolinocarpon globosicarpum</i>	<i>Nypa fruticans</i>	Hyde, 1992b	
	<i>Nipicola carbo-spora</i>	<i>Nypa fruticans</i>	Hyde, 1992c	
	<i>Nypaella frondicola</i>	<i>Nypa fruticans</i>	Hyde and Sutton, 1992	
	<i>Plectophomella nypae</i>	<i>Nypa fruticans</i>	Hyde and Sutton, 1992	
	<i>Pleurophomopsis nypae</i>	<i>Nypa fruticans</i>	Hyde and Sutton, 1992	
	1993	<i>Manokwaria notabilis</i>	-	Hyde, 1993a
<i>Oxydothis alexandrarum</i>		<i>Archontophoeni x alexandrae</i>	Hyde, 1993b	
<i>Oxydothis australiensis</i>		<i>Archontophoeni x sp.</i>	Hyde, 1993b	
<i>Oxydothis frondicola</i>		-	Hyde, 1993b	
<i>Oxydothis licualae</i>		<i>Licuala sp.</i>	Hyde, 1993b	
<i>Oxydothis luteaspora</i>		<i>Calamus sp.</i>	Hyde, 1993b	
<i>Oxydothis rubella</i>		<i>Calamus sp.</i>	Hyde, 1993b	
<i>Palmicola archontophoenicis</i>		<i>Archontophoeni x sp.</i>	Hyde, 1993c	
<i>Pemphidium zonatum</i>		-	Hyde, 1993d	
<i>Phomatospora nypae</i>		<i>Nypa fruticans</i>	Hyde, 1993e	
1994	<i>Anthostomella livistoncola</i>	<i>Livistona sp.</i>	Hyde, 1994f	
	<i>Apioclypea livistonae</i>	<i>Livistona sp.</i>	Hyde, 1994f	
	<i>Appendispora frondicola</i>	<i>Oncosperma horridum</i>	Hyde, 1994a	

Year	Fungus	Host	References	Note
1994	<i>Durispora elaeidicola</i>	<i>Elaeis guineensis</i>	Hyde, 1994b	
	<i>Lockerbia palmicola</i>	-	Hyde, 1994c	
	<i>Massarina fronsisubmersa</i>	<i>Livistona</i> sp.	Hyde, 1994g	
	<i>Nipicola selangorensis</i>	<i>Nypa fruticans</i>	Hyde, 1994d	
	<i>Oxydothis acutata</i>	-	Hyde, 1994e	
	<i>Oxydothis froehlichiae</i>	<i>Calamus radicalis</i>	Hyde, 1994e	
	<i>Oxydothis gigantea</i>	-	Hyde, 1994e	
	<i>Oxydothis linospadicis</i>	<i>Linospadix microcarya</i>	Fröhlich and Hyde, 1994	parasite
	<i>Oxydothis livistonica</i>	-	Hyde, 1994e	
	<i>Oxydothis livisticola</i>	<i>Livistona</i> sp.	Hyde, 1994e	
	<i>Oxydothis manokwariensis</i>	-	Hyde, 1994e	
	<i>Oxydothis maquilingiana</i>	-	Hyde, 1994e	
	<i>Oxydothis nigra</i>	<i>Licuala</i> sp.	Hyde, 1994e	
	<i>Oxydothis nonamyloidea</i>	<i>Livistona</i> sp.	Hyde, 1994e	
	<i>Oxydothis nypicola</i>	<i>Nypa fruticans</i>	Hyde, 1994e	
	<i>Oxydothis obducens</i>	<i>Linospadix microcarya</i>	Hyde, 1994e	
	<i>Oxydothis oedema</i>	-	Hyde, 1994e	
	<i>Oxydothis opaca</i>	-	Hyde, 1994e	
	<i>Oxydothis oraniopsis</i>	<i>Oraniopsis appendiculata</i>	Fröhlich and Hyde, 1994	parasite
<i>Oxydothis parasitica</i>	<i>Licuala ramsayi</i>	Fröhlich and Hyde, 1994	parasite	
1995	<i>Cocoicola cylindrospora</i>	-	Hyde, 1995c	
	<i>Cocoicola fusispora</i>	-	Hyde, 1995c	
	<i>Caudatispora palmicola</i>	<i>Phytelaphas</i> sp.	Fröhlich and Hyde, 1995b	
	<i>Fasciatispora bicincta</i>	-	Hyde, 1995d	
	<i>Fasciatispora melanosticta</i>	-	Hyde, 1995d	
	<i>Fasciatispora petrakii</i>	-	Hyde, 1995d	
	<i>Fasciatispora sabalicola</i>	<i>Sabal palmetto</i>	Hyde, 1995d	
	<i>Guignardia candeloflamma</i>	<i>Pinanga</i> spp.	Fröhlich and Hyde, 1995c	Parasite
	<i>Guignardia cocoës</i>	-	Hyde, 1995e	

Year	Fungus	Host	References	Note
1995	<i>Guignardia manokwaria</i>	-	Hyde, 1995e	
	<i>Guignardia migrans</i>	-	Hyde, 1995e	
	<i>Maculatipalma fronsicola</i>	<i>Linospadix microcarya</i>	Fröhlich and Hyde, 1995d	Parasite
	<i>Rachidicola palmae</i>	<i>Calamus</i> sp.	Hyde and Fröhlich, 1995	
	<i>Sabalicola sabalensioides</i>	-	Hyde, 1995f	
1996	<i>Anthostomella belalongensis</i>	<i>Arenga undulatifolia</i>	Hyde, 1996c	
	<i>Anthostomella bruneiensis</i>	<i>Licuala</i> sp.	Hyde, 1996c	
	<i>Anthostomella calamicola</i>	<i>Calamus</i> sp.	Hyde, 1996c	
	<i>Anthostomella daemonoropsis</i>	<i>Daemonorops</i> sp.	Hyde, 1996c	
	<i>Anthostomella francisiae</i>	<i>Calamus</i> sp.	Hyde, 1996c	
	<i>Anthostomella irregularispora</i>	<i>Licuala spinosa</i>	Hyde, 1996c	
	<i>Anthostomella licualicola</i>	<i>Licuala</i> sp.	Hyde, 1996c	
	<i>Anthostomella nannorrhopsis</i>	-	Hyde, 1996c	
	<i>Anthostomella pinangae</i>	<i>Pinanga</i> sp.	Hyde, 1996c	
	<i>Anthostomella zongluensis</i>	<i>Phoenix</i> sp.	Hyde, 1996c	
	<i>Arecomyces bruneiensis</i>	<i>Daemonorops</i> sp.	Hyde, 1996b	
	<i>Arecomyces dicksonii</i>	<i>Jessenia</i> sp.	Hyde, 1996b	
	<i>Arecomyces epigenus</i>	<i>Oraniopsis</i> sp.	Hyde, 1996b	
	<i>Arecomyces frondicola</i>	<i>Arenga undulatifolia</i>	Hyde, 1996b	
	<i>Arecomyces hedgeri</i>	<i>Jessenia</i> sp.	Hyde, 1996b	
	<i>Arecomyces sekoyae</i>	<i>Jessenia</i> sp.	Hyde, 1996b	
	<i>Arecomyces tetrasporus</i>	<i>Phytelephas</i> sp.	Hyde, 1996b	
	<i>Arecophila calamicola</i>	<i>Calamus</i> sp.	Hyde, 1996d	
	<i>Arecophila chamaeropsis</i>	<i>Chamaerops</i> sp.	Hyde, 1996d	
	<i>Arecophila eugeissonae</i>	<i>Eugeissona tristis</i>	Hyde, 1996d	
<i>Arecophila gulubiicola</i>	<i>Gulubia costata</i>	Hyde, 1996d		
<i>Arecophila notabilis</i>	<i>Calamus</i> sp.	Hyde, 1996d		

Year	Fungus	Host	References	Note
1996	<i>Arecophila nypae</i>	<i>Nypa fruticans</i>	Hyde, 1996d	
	<i>Arecophila serrulata</i>	<i>Korthalsia</i> sp.	Hyde, 1996d	
	<i>Capsulospora brunneispora</i>	<i>Daemonorops</i> sp.	Hyde, 1996e	
	<i>Capsulospora calamicola</i>	<i>Calamus</i> sp.	Hyde, 1996e	
	<i>Capsulospora frondicola</i>	<i>Daemonorops</i> sp.	Hyde, 1996e	
	<i>Frondisphaeria palmicola</i>	<i>Eugeissona minor</i>	Hyde, 1996f	
	<i>Maculatifrones aequatoriensis</i>	<i>Astrocaryum</i> sp.	Hyde <i>et al.</i> , 1996	parasite
	<i>Myelosperma parasitica</i>	<i>Phoenix reclinata</i> :	Hyde <i>et al.</i> , 1996	parasite
	<i>Nectria palmicola</i>	<i>Mauritia flexuosa</i>	Goh and Hyde, 1996a	
	<i>Palmicola filiformis</i>	<i>Jessenia bataua</i>	Goh and Hyde, 1996b	
	<i>Pemphidium calamicola</i>	<i>Calamus</i> sp.	Hyde, 1996g	
	<i>Pemphidium palmicola</i>	-	Hyde, 1996g	
	<i>Pulmosphaeria archontophoenicis</i>	<i>Archontophoeni x alexandrae</i>	Taylor <i>et al.</i> , 1996	
	<i>Tirisporella beccariana</i>	<i>Nypa fruticans</i>	Jones <i>et al.</i> , 1996	
1997	<i>Appendicospora hongkongensis</i>	<i>Livistona chinensis</i>	Yanna <i>et al.</i> , 1997	
	<i>Cocoicola livistoncola</i>	<i>Livistona chinensis</i>	Hyde <i>et al.</i> , 1997a	
	<i>Lepteutypa hexagonalis</i>	<i>Pinanga</i> sp.	Goh and Hyde, 1997a	
	<i>Massarina desmonci</i>	-	Hyde and Aptroot, 1997	
	<i>Massarina palmicola</i>	<i>Livistona</i> sp.	Hyde and Aptroot, 1997	
	<i>Melanographium palmicola</i>	<i>Archontophoeni x alexandrae</i>	Goh and Hyde, 1997b	
	<i>Roussoella aequatoriensis</i>	-	Hyde, 1997	
	<i>Roussoella saltuensis</i>	-	Hyde, 1997	
	<i>Pseudospiropes arecacensis</i>	<i>Licuala ramsayi</i>	Fröhlich <i>et al.</i> , 1997	parasite
1998	<i>Anthostomella frondicola</i>	-	Hyde <i>et al.</i> , 1998a	
	<i>Anthostomella oraniopsis</i>	<i>Oraniopsis appendiculata</i>	Hyde <i>et al.</i> , 1998a	

Year	Fungus	Host	References	Note
1998	<i>Anthostomella phoenicis</i>	<i>Phoenix sylvestris</i>	Hyde <i>et al.</i> , 1998a	
	<i>Anthostomella rattanicola</i>	<i>Daemonorops</i> sp.	Hyde <i>et al.</i> , 1998a	
	<i>Apioclypea apiosporioides</i>	<i>Sabal palmetto</i>	Hyde <i>et al.</i> , 1998a	
	<i>Apioclypea indica</i>	<i>Daemonorops oxycarpa</i>	Hyde <i>et al.</i> , 1998a	
	<i>Apioclypea nypicola</i>	<i>Nypa fruticans</i>	Hyde <i>et al.</i> , 1998a	
	<i>Apiospora sinensis</i>	<i>Trachycarpus fortunei</i>	Hyde <i>et al.</i> , 1998a	
	<i>Apioclypea phoenicicola</i>	<i>Phoenix</i> sp.	Hyde <i>et al.</i> , 1998a	
	<i>Astrosphaeriella aequatoriensis</i>	<i>Phytelephas</i> sp.	Hyde and Fröhlich, 1998	
	<i>Astrosphaeriella angustispora</i>	<i>Licuala</i> sp.	Hyde and Fröhlich, 1998	
	<i>Astrosphaeriella australiensis</i>	<i>Calamus</i> sp.	Hyde and Fröhlich, 1998	
	<i>Astrosphaeriella bakeriana</i>	-	Hyde and Fröhlich, 1998	
	<i>Astrosphaeriella lenticularis</i>	<i>Geonoma</i> sp.	Hyde and Fröhlich, 1998	
	<i>Astrosphaeriella livistoncola</i>	<i>Livistona chinensis</i>	Hyde and Fröhlich, 1998	
	<i>Astrosphaeriella lophiostomopsis</i>	<i>Arenga undulatifolia</i>	Hyde and Fröhlich, 1998	
	<i>Astrosphaeriella malayensis</i>	<i>Daemonorops</i> sp.	Hyde and Fröhlich, 1998	
	<i>Astrosphaeriella maquilingiana</i>	-	Hyde and Fröhlich, 1998	
	<i>Astrosphaeriella mauritiae</i>	<i>Mauritia flexuosa</i>	Hyde and Fröhlich, 1998	

Year	Fungus	Host	References	Note
1998	<i>Astrosphaeriella nipicola</i>	-	Hyde and Fröhlich, 1998	
	<i>Astrosphaeriella samuelsii</i>	-	Hyde and Fröhlich, 1998	
	<i>Astrosphaeriella splendida</i>	-	Hyde and Fröhlich, 1998	
	<i>Astrosphaeriella uberina</i>	-	Hyde and Fröhlich, 1998	
	<i>Asymmetricospora calamicola</i>	<i>Calamus caryotoides</i>	Fröhlich and Hyde, 1998	
	<i>Brunneiapiospora aequatorensis</i>	<i>Geonoma</i> sp.	Hyde <i>et al.</i> , 1998a	
	<i>Brunneiapiospora australiensis</i>	<i>Calamus australis</i>	Hyde <i>et al.</i> , 1998a	
	<i>Brunneiapiospora deightoniella</i>	<i>Elaeis guineensis</i>	Hyde <i>et al.</i> , 1998a	
	<i>Brunneiapiospora javensis</i>	<i>Calamus</i> sp.	Hyde <i>et al.</i> , 1998a	
	<i>Brunneiapiospora jesseniae</i>	<i>Jessenia bataua</i>	Hyde <i>et al.</i> , 1998a	
	<i>Koorchaloma novojournalis</i>	<i>Arenga engleri</i>	Yanna <i>et al.</i> , 1998a	
	<i>Neolinocarpon australiense</i>	<i>Calamus moti</i>	Hyde <i>et al.</i> , 1998b	
	<i>Neolinocarpon calami</i>	<i>Calamus conirostris</i>	Hyde <i>et al.</i> , 1998b	
	<i>Neolinocarpon enshiense</i>	<i>Trachycarpus fortunei</i>	Hyde <i>et al.</i> , 1998b	
	<i>Neolinocarpon eutypoides</i>	-	Hyde <i>et al.</i> , 1998b	
	<i>Neolinocarpon inconspicuum</i>	<i>Archontophoeni x alexandrae</i>	Hyde <i>et al.</i> , 1998b	
	<i>Neolinocarpon nonappendiculatum</i>	<i>Archontophoeni x alexandrae</i>	Hyde <i>et al.</i> , 1998b	
	<i>Palmomyces montaneus</i>	<i>Oraniopsis appendiculata</i>	Hyde <i>et al.</i> , 1998a	
	<i>Polybulbophiale palmicola</i>	<i>Licuala</i> sp.	Goh and Hyde, 1998a	
	<i>Pseudomassaria huwerae</i>	<i>Calamus australis</i>	Hyde <i>et al.</i> , 1998a	
	<i>Pseudomassaria mauritiae</i>	<i>Mauritia flexuosa</i>	Hyde <i>et al.</i> , 1998a	

Year	Fungus	Host	References	Note
1998	<i>Pseudomassaria megalospora</i>	<i>Mauritia flexuosa</i>	Hyde <i>et al.</i> , 1998a	
	<i>Spadicoides palmicola</i>	<i>Licuala</i> sp.	Goh and Hyde, 1998b	
	<i>Spadicoides heterocolorata</i>	-	Goh and Hyde, 1998b	
	<i>Staurophoma calami</i>	<i>Calamus walkeri</i>	Yanna <i>et al.</i> , 1998b	
	<i>Stratiphoromyces brunneisporus</i>	<i>Licuala</i> sp.	Goh and Hyde, 1998c	
1999	<i>Aniptodera intermedia</i>	<i>Nypa fruticans</i>	Hyde <i>et al.</i> , 1999a	
	<i>Anthostomella nypae</i>	<i>Nypa fruticans</i>	Hyde <i>et al.</i> , 1999a	
	<i>Anthostomella nypensis</i>	<i>Nypa fruticans</i>	Hyde <i>et al.</i> , 1999a	
	<i>Anthostomella nypicola</i>	<i>Nypa fruticans</i>	Hyde <i>et al.</i> , 1999a	
	<i>Cannonia australis</i>	-	Taylor and Hyde, 1999a	
	<i>Chaetosphaeria arecacensis</i>	<i>Licuala</i> sp.	Hyde <i>et al.</i> , 1999c	
	<i>Chaetosphaeria hongkongensis</i>	<i>Archontophoeni x alexandrae</i>	Hyde <i>et al.</i> , 1999c	
	<i>Dictyosporium tetraseriale</i>	<i>Livistona chinensis</i>	Goh <i>et al.</i> , 1999	
	<i>Endomelanconium phoenicicola</i>	<i>Phoenix hanceana</i>	Yanna <i>et al.</i> , 1999	
	<i>Helicorhoidion nypicola</i>	<i>Nypa fruticans</i>	Hyde <i>et al.</i> , 1999a	
	<i>Herpotrichia nypicola</i>	<i>Nypa fruticans</i>	Hyde <i>et al.</i> , 1999a	
	<i>Iodosphaeria hongkongensis</i>	<i>Archontophoeni x alexandrae</i>	Taylor and Hyde, 1999b	
	<i>Leptosphaeria nypicola</i>	<i>Nypa fruticans</i>	Hyde <i>et al.</i> , 1999a	
	<i>Lignincola nypae</i>	<i>Nypa fruticans</i>	Hyde <i>et al.</i> , 1999a	
	<i>Linocarpon angustatum</i>	<i>Nypa fruticans</i>	Hyde and Alias, 1999	
	<i>Niesslia palmicola</i>	<i>Cocos nucifera</i>	Hyde <i>et al.</i> , 1999c	
<i>Neolinocarpon nypicola</i>	<i>Nypa fruticans</i>	Hyde and Alias, 1999		
<i>Ornatipora frondicola</i>	<i>Mauritia flexuosa</i>	Hyde <i>et al.</i> , 1999c		

Year	Fungus	Host	References	Note
1999	<i>Ornatispora gamsii</i>	<i>Calamus conirostris</i>	Hyde <i>et al.</i> , 1999c	
	<i>Ornatispora palmicola</i>	-	Hyde <i>et al.</i> , 1999c	
	<i>Phomatospora nypicola</i>	<i>Nypa fruticans</i>	Hyde <i>et al.</i> , 1999a	
	<i>Pseudohalonectria eubenangeensis</i>	<i>Archontophoeni x alexandrae</i>	Hyde <i>et al.</i> , 1999b	
	<i>Pseudohalonectria palmicola</i>	<i>Calamus australis</i>	Hyde <i>et al.</i> , 1999b	
	<i>Trichocladium nypae</i>	<i>Nypa fruticans</i>	Hyde <i>et al.</i> , 1999a	
	<i>Vibrissea nypicola</i>	<i>Nypa fruticans</i>	Hyde <i>et al.</i> , 1999a	
2000	<i>Annulatascus citriosporus</i>	<i>Licualai</i> sp.	Fröhlich and Hyde, 2000	
	<i>Annulatascus licualae</i>	<i>Licuala ramsayi</i>	Fröhlich and Hyde, 2000	
	<i>Anthostomella applanata</i>	<i>Phoenix reclinata</i>	Lu and Hyde, 2000	
	<i>Anthostomella bipileatus</i>	<i>Calamus australis</i>	Lu and Hyde, 2000	
	<i>Anthostomella caffrariae</i>	<i>Phoenix reclinata</i>	Lu and Hyde, 2000	
	<i>Anthostomella colligata</i>	<i>Raphia australis</i>	Lu and Hyde, 2000	
	<i>Anthostomella palmae</i>	<i>Phoenix reclinata</i>	Lu and Hyde, 2000	
	<i>Anthostomella palmaria</i>	<i>Cocos</i> sp.	Fröhlich and Hyde, 2000	
	<i>Anthostomella rhapsidophylli</i>	<i>Rhapsidophyllum hystrix</i>	Fröhlich and Hyde, 2000	
	<i>Anthostomella spiralis</i>	<i>Phoenix spiralis</i>	Lu and Hyde, 2000	
	<i>Anthostomella uniseriata</i>	<i>Calamus conirostris</i>	Fröhlich and Hyde, 2000	
	<i>Ascotaiwania licualae</i>	<i>Licuala ramsayi</i>	Fröhlich and Hyde, 2000	
	<i>Astrocystis rachidis</i>	-	Fröhlich and Hyde, 2000	
	<i>Astrosphaeriella daemonoropis</i>	<i>Daemonorops margaritae</i>	Hyde <i>et al.</i> , 2000°	
	<i>Astrosphaeriella fissuristoma</i>	<i>Calamus conirostris</i>	Hyde <i>et al.</i> , 2000a	

Year	Fungus	Host	References	Note
2000	<i>Astrosphaeriella immersa</i>	<i>Archontophoeni x alexandrae</i>	Hyde <i>et al.</i> , 2000a	
	<i>Astrosphaeriella maculans</i>	-	Hyde <i>et al.</i> , 2000a	
	<i>Capsulospora angustispora</i>	<i>Licuala</i> sp.	Fröhlich and Hyde, 2000	
	<i>Capsulospora australiensis</i>	<i>Licuala ramsayi</i>	Fröhlich and Hyde, 2000	
	<i>Capsulospora bipolaris</i>	<i>Calamus</i> sp.	Fröhlich and Hyde, 2000	
	<i>Capsulospora borneoensis</i>	<i>Calamus conirostris</i>	Fröhlich and Hyde, 2000	
	<i>Cenangiumella rattanicola</i>	<i>Calamus conirostris</i>	Fröhlich and Hyde, 2000	
	<i>Cosmospora purpureocolla</i>	<i>Calamus australis</i>	Fröhlich and Hyde, 2000	
	<i>Craspedodidymum nigroseptatum</i>	<i>Oncosperma horridum</i>	Yanna <i>et al.</i> , 2000a	
	<i>Cyanopulvis australiensis</i>	<i>Calamus australis</i>	Fröhlich and Hyde, 2000	
	<i>Eutypa rattanicola</i>	<i>Calamus moti</i>	Fröhlich and Hyde, 2000	
	<i>Everhartia aquatica</i>	Phoenix hanceana	Yanna <i>et al.</i> , 2000b	parasite
	<i>Everhartia phoenicis</i>	Phoenix hanceana	Yanna <i>et al.</i> , 2000b	parasite
	<i>Cyanopulvis australiensis</i>	<i>Calamus australis</i>	Fröhlich and Hyde, 2000	
	<i>Eutypa rattanicola</i>	<i>Calamus moti</i>	Fröhlich and Hyde, 2000	
	<i>Gaeumannomyces licualae</i>	<i>Licuala</i> sp.	Fröhlich and Hyde, 2000	
	<i>Herpotrichia calamicola</i>	<i>Calamus caryotoides</i>	Fröhlich and Hyde, 2000	
	<i>Herpotrichia palmicola</i>	<i>Calamus caryotoides</i>	Fröhlich and Hyde, 2000	
	<i>Ijuhya hongkongensis</i>	<i>Livistona chinensis</i>	Fröhlich and Hyde, 2000	
	<i>Lachnum edwardsii</i>	<i>Calamus conirostris</i>	Fröhlich and Hyde, 2000	
	<i>Lachnellula rattanicola</i>	<i>Calamus australis</i>	Fröhlich and Hyde, 2000	
	<i>Lasionectria calamicola</i>	<i>Calamus australis</i>	Fröhlich and Hyde, 2000	
	<i>Linocarpon bruneiense</i>	<i>Calamus pogonacanthus</i>	Fröhlich and Hyde, 2000	

Year	Fungus	Host	References	Note
2000	<i>Linocarpon calamicola</i>	<i>Calamus australis</i>	Fröhlich and Hyde, 2000	
	<i>Linocarpon eccentricollum</i>	<i>Mauritia flexuosa</i>	Fröhlich and Hyde, 2000	
	<i>Linocarpon mauritiae</i>	<i>Mauritia flexuosa</i>	Fröhlich and Hyde, 2000	
	<i>Lophiostoma australiense</i>	<i>Licuala ramsayi</i>	Hyde <i>et al.</i> , 2000a	
	<i>Lophodermium borneoensis</i>	<i>Licuala</i> sp.	Fröhlich and Hyde, 2000	
	<i>Lophodermium licualae</i>	<i>Licuala</i> sp.	Fröhlich and Hyde, 2000	
	<i>Massarina albo-ostiolata</i>	<i>Livistona chinensis</i>	Aptroot <i>et al.</i> , 2000	
	<i>Massarina sanguineo-ostiolata</i>	<i>Calamus conirostris</i>	Aptroot <i>et al.</i> , 2000	
	<i>Melanochaeta daemonoropsis</i>	<i>Daemonorops margaritae</i>	Fröhlich and Hyde, 2000	
	<i>Morenoina palmicola</i>	<i>Calamus australis</i>	Fröhlich and Hyde, 2000	
	<i>Mycomicrothelia palmicola</i>	<i>Daemonorops margaritae</i>	Fröhlich and Hyde, 2000	
	<i>Nectriella erythroclypea</i>	<i>Licuala ramsayi</i> :	Fröhlich <i>et al.</i> , 2000	
	<i>Nipicola licualae</i>	<i>Licuala ramsayi</i>	Fröhlich and Hyde, 2000	
	<i>Oxydothis angustispora</i>	<i>Licuala ramsayi</i>	Fröhlich and Hyde, 2000	
	<i>Oxydothis asiatica</i>	<i>Calamus flabellatus</i>	Fröhlich and Hyde, 2000	
	<i>Oxydothis asymmetrica</i>	<i>Calamus conirostris</i>	Fröhlich and Hyde, 2000	
	<i>Oxydothis batuapoiensis</i>	<i>Daemonorops oxycarpa</i>	Fröhlich and Hyde, 2000	
	<i>Oxydothis belalongensis</i>	<i>Licuala</i> sp.	Fröhlich and Hyde, 2000	
	<i>Oxydothis bruneiensis</i>	<i>Licuala</i> sp.	Fröhlich and Hyde, 2000	
	<i>Oxydothis cyrtospora</i>	<i>Licuala ramsayi</i>	Fröhlich and Hyde, 2000	
	<i>Oxydothis daemonoropsicola</i>	<i>Daemonorops margaritae</i>	Fröhlich and Hyde, 2000	
	<i>Oxydothis dispariopicis</i>	<i>Daemonorops oxycarpa</i>	Fröhlich and Hyde, 2000	
	<i>Oxydothis extensa</i>	<i>Licuala ramsayi</i>	Fröhlich and Hyde, 2000	

Year	Fungus	Host	References	Note
2000	<i>Oxydothis hongkongensis</i>	<i>Daemonorops margaritae</i>	Fröhlich and Hyde, 2000	
	<i>Oxydothis licualicola</i>	<i>Licuala</i> sp.	Fröhlich and Hyde, 2000	
	<i>Oxydothis magnicolla</i>	<i>Calamus conirostris</i>	Fröhlich and Hyde, 2000	
	<i>Oxydothis mauritiae</i>	<i>Mauritia flexuosa</i>	Fröhlich and Hyde, 2000	
	<i>Oxydothis megalospora</i>	<i>Calamus</i> sp.	Fröhlich and Hyde, 2000	
	<i>Oxydothis nonspecifica</i>	<i>Calamus pogonacanthus</i>	Fröhlich and Hyde, 2000	
	<i>Oxydothis nontincta</i>	<i>Licuala</i> sp.	Fröhlich and Hyde, 2000	
	<i>Oxydothis perangusta</i>	<i>Licuala</i> sp.	Fröhlich and Hyde, 2000	
	<i>Oxydothis pusillispora</i>	<i>Licuala</i> sp.	Fröhlich and Hyde, 2000	
	<i>Oxydothis rattanica</i>	<i>Daemonorops margaritae</i>	Fröhlich and Hyde, 2000	
	<i>Oxydothis rattanicola</i>	<i>Calamus tetradactylus</i>	Fröhlich and Hyde, 2000	
	<i>Oxydothis rimicola</i>	<i>Calamus pogonacanthus</i>	Fröhlich and Hyde, 2000	
	<i>Oxydothis uniseriata</i>	<i>Calamus radicalis</i>	Fröhlich and Hyde, 2000	
	<i>Palmicola australiensis</i>	<i>Licuala ramsayi</i>	Fröhlich and Hyde, 2000	
	<i>Paraphaeosphaeria hongkongensis</i>	<i>Livistona chinensis</i>	Fröhlich and Hyde, 2000	
	<i>Pemphidium australiense</i>	<i>Calamus australis</i>	Fröhlich and Hyde, 2000	
	<i>Pemphidium rattanicola</i>	<i>Calamus moti</i>	Fröhlich and Hyde, 2000	
	<i>Phaeosphaeria livistonae</i>	<i>Livistona chinensis</i>	Fröhlich and Hyde, 2000	
	<i>Sorokinella appendicospora</i>	<i>Livistona chinensis</i>	Fröhlich and Hyde, 2000	
	<i>Schizoparme calamicola</i>	<i>Daemonorops margaritae</i>	Fröhlich and Hyde, 2000	
	<i>Sorokinella calamae</i>	<i>Calamus moti</i>	Fröhlich and Hyde, 2000	
	<i>Strossmayeria australiensis</i>	<i>Calamus moti</i>	Fröhlich and Hyde, 2000	
	<i>Strossmayeria calamicola</i>	<i>Calamus moti</i>	Fröhlich and Hyde, 2000	

Year	Fungus	Host	References	Note
2000	<i>Submersisphaeria rattanicola</i>	<i>Calamus radicalis</i>	Fröhlich and Hyde, 2000	
	<i>Valsa cocoëns</i>	-	Fröhlich and Hyde, 2000	
2001	<i>Asterina arecacearum</i>	<i>Calamus</i> sp.	Hosagoudar <i>et al.</i> , 2001	
	<i>Astrocystis nypae</i>	-	Smith and Hyde, 2001	
	<i>Astrocystis rudis</i>	<i>Korthalsia brassii</i>	Smith and Hyde, 2001	
	<i>Curvatispora singaporensis</i>	<i>Livistona spinosa</i>	Sarma and Hyde, 2001	
	<i>Guestia gonetropospora</i>	<i>Mauritia flexuosa</i>	Smith and Hyde, 2001	
	<i>Lasiosphaeria alexandrae</i>	<i>Archontophoeni x alexandrae</i>	Taylor <i>et al.</i> , 2001	
	<i>Lasiosphaeria alexandricola</i>	<i>Archontophoeni x alexandrae</i>	Taylor <i>et al.</i> , 2001	
	<i>Lasiosphaeria chapmanii</i>	<i>Mauritia flexuosa</i>	Taylor <i>et al.</i> , 2001	
	<i>Nemania maculosa</i>	-	Smith and Hyde, 2001	
	<i>Nemania nummularioides</i>	-	Smith and Hyde, 2001	
	<i>Nemania saladerana</i>	<i>Astrocaryum</i> sp.	Smith and Hyde, 2001	
	<i>Seynesia livistonae</i>	<i>Livistona chinensis</i>	Guo and Hyde, 2001	
	<i>Sporidesmiella oraniopsis</i>	<i>Oraniopsis appendiculata</i>	Yanna <i>et al.</i> , 2001a	
2002	<i>Chalara siamense</i>	<i>Eleiodoxa conferta</i>	McKenzie <i>et al.</i> , 2002	
	<i>Jahnula appendiculata</i>	<i>Licuala longicalycata</i>	Pinruan <i>et al.</i> , 2002	
	<i>Goidanichiella fusiforma</i>	<i>Eleiodoxa conferta</i>	Hyde <i>et al.</i> , 2002	
2003	<i>Amarenographium sinense</i>	<i>Trachycarpus fortunei</i>	Taylor and Hyde, 2003	
	<i>Anthostomella birima</i>	<i>Trachycarpus fortunei</i>	Taylor and Hyde, 2003	
	<i>Anthostomella clypeosa</i>	<i>Archontophoeni x alexandrae</i>	Taylor and Hyde, 2003	
	<i>Anthostomella notabilis</i>	<i>Cocos nucifera</i>	Taylor and Hyde, 2003	
	<i>Anthostomella xuanenensis</i>	<i>Trachycarpus fortunei</i>	Taylor and Hyde, 2003	

Year	Fungus	Host	References	Note
2003	<i>Apioclypea cocoicola</i>	<i>Cocos nucifera</i>	Taylor and Hyde, 2003	
	<i>Apioclypea nonapiospora</i>	<i>Archontophoeni x alexandrae</i>	Taylor and Hyde, 2003	
	<i>Arecomyces calami</i>	<i>Calamus</i> sp.	Hyde and Fröhlich, 2003	
	<i>Astrocystis sinensis</i>	<i>Trachycarpus fortunei</i>	Taylor and Hyde, 2003	
	<i>Berkleasmium sinense</i>	<i>Trachycarpus fortunei</i>	Taylor and Hyde, 2003	
	<i>Botryosphaeria archontophoenicis</i>	<i>Archontophoeni x alexandrae</i>	Taylor and Hyde, 2003	
	<i>Botryosphaeria brunneispora</i>	<i>Trachycarpus fortunei</i>	Taylor and Hyde, 2003	
	<i>Capsulospora trachycarpa</i>	<i>Trachycarpus fortunei</i>	Taylor and Hyde, 2003	
	<i>Ceuthospora palmicola</i>	<i>Trachycarpus fortunei</i>	Taylor and Hyde, 2003	
	<i>Chaetopsina alexandrae</i>	<i>Archontophoeni x alexandrae</i>	Taylor and Hyde, 2003	
	<i>Chloridium cocoicola</i>	<i>Cocos nucifera</i>	Taylor and Hyde, 2003	
	<i>Circinotrichum palmicola</i>	<i>Trachycarpus fortunei</i>	Taylor and Hyde, 2003	
	<i>Custingophora undulatistipes</i>	<i>Eleiodoxa conferta</i>	Pinnoi <i>et al.</i> , 2003a	
	<i>Dactylaria flammulicornuta</i>	<i>Eleiodoxa conferta</i>	Pinnoi <i>et al.</i> , 2003b	
	<i>Dactylaria palmae</i>	<i>Eleiodoxa conferta</i>	Pinnoi <i>et al.</i> , 2003b	
	<i>Dactylaria uliginicola</i>	<i>Eleiodoxa conferta</i>	Pinnoi <i>et al.</i> , 2003b	
	<i>Diaporthe palmarum</i>	<i>Trachycarpus fortunei</i>	Taylor and Hyde, 2003	
	<i>Hydropisphaera ciliata</i>	<i>Archontophoeni x alexandrae</i>	Taylor and Hyde, 2003	
	<i>Linocarpon luteocollum</i>	<i>Archontophoeni x alexandrae</i>	Taylor and Hyde, 2003	
	<i>Massarina grandispora</i>	<i>Trachycarpus fortunei</i>	Taylor and Hyde, 2003	
	<i>Muyocopron hongkongense</i>	<i>Archontophoeni x alexandrae</i>	Taylor and Hyde, 2003	
	<i>Nigromammilla calami</i>	<i>Daemonorops margaritae</i>	Hyde and Fröhlich, 2003	

Year	Fungus	Host	References	Note
2003	<i>Oxydothis ianei</i>	<i>Trachycarpus fortunei</i>	Taylor and Hyde, 2003	
	<i>Palmicola bipolaris</i>	<i>Archontophoeni x alexandrae</i>	Taylor and Hyde, 2003	
	<i>Parahendersonia trachycarpa</i>	<i>Trachycarpus fortunei</i>	Taylor and Hyde, 2003	
	<i>Periconia trachycarpicola</i>	<i>Trachycarpus fortunei</i>	Taylor and Hyde, 2003	
	<i>Phaeophleospora striae</i>	<i>Trachycarpus fortunei</i>	Taylor and Hyde, 2003	
	<i>Phomatospora archontophoenicis</i>	<i>Archontophoeni x alexandrae</i>	Taylor and Hyde, 2003	
	<i>Podosporium bisseptatum</i>	<i>Cocos nucifera</i>	Taylor and Hyde, 2003	
	<i>Pseudohalonectria palmae</i>	-	Hyde and Fröhlich, 2003	
	<i>Septoriella trachycarpi</i>	<i>Trachycarpus fortunei</i>	Taylor and Hyde, 2003	
	<i>Sorokina frondicola</i>	<i>Archontophoeni x alexandrae</i>	Taylor and Hyde, 2003	
	<i>Stictis ecclesiensis</i>	<i>Trachycarpus fortunei</i>	Taylor and Hyde, 2003	
	<i>Triadelphia australiensis</i>	<i>Archontophoeni x alexandrae</i>	Taylor and Hyde, 2003	
	<i>Tribulatia appendicospora</i>	<i>Archontophoeni x alexandrae</i>	Taylor and Hyde, 2003	
	<i>Unichaetosphaeria penguinoidea</i>	<i>Eleiodoxa conferta</i>	Pinnoi <i>et al.</i> , 2003b	
	<i>Vanakripa minutellipsoidea</i>	<i>Eleiodoxa conferta</i>	Pinnoi <i>et al.</i> , 2003a	
	<i>Wardomyopsis trachycarpicola</i>	<i>Trachycarpus fortunei</i>	Taylor and Hyde, 2003	
<i>Xylaria queenslandica</i>	<i>Archontophoeni x alexandrae</i>	Taylor and Hyde, 2003		
2004	<i>Brachysporiopsis chinensis</i>	<i>Livistona chinensis</i>	Yanna <i>et al.</i> , 2004	
	<i>Craspedodidymum licualae</i>	<i>Licuala longicalycata</i>	Pinruan <i>et al.</i> , 2004d	
	<i>Craspedodidymum microsporum</i>	<i>Licuala longicalycata</i>	Pinruan <i>et al.</i> , 2004d	
	<i>Craspedodidymum siamense</i>	<i>Licuala longicalycata</i>	Pinruan <i>et al.</i> , 2004d	
	<i>Flammispora bioteca</i>	<i>Licuala longicalycata</i>	Pinruan <i>et al.</i> , 2004c	

Year	Fungus	Host	References	Note
2004	<i>Phruensis brunneispora</i>	<i>Licuala longicalycata</i>	Pinruan <i>et al.</i> , 2004a	
	<i>Stachybotrys palmae</i>	<i>Licuala longicalycata</i>	Pinruan <i>et al.</i> , 2004b	
	<i>Submersisphaeria palmae</i>	<i>Eleiodoxa conferta</i>	Pinnoi <i>et al.</i> , 2004	
2005	<i>Endosporoideus pedicellatus</i>	<i>Phoenix hanceana</i>	Ho <i>et al.</i> , 2005	
2006	<i>Oxydothis cyrtostachicola</i>	<i>Cyrtostachys renda</i>	Hidayat <i>et al.</i> , 2006	
	<i>Oxydothis inaequalis</i>	<i>Wallichia siamensis</i>	Hidayat <i>et al.</i> , 2006	
	<i>Oxydothis wallichianensis</i>	<i>Wallichia siamensis</i>	Hidayat <i>et al.</i> , 2006	
2007	<i>Berkleasium crunisia</i>	<i>Calamus</i> sp.	Pinnoi <i>et al.</i> , 2007	
	<i>Fasciatispora ujongkuloniensis</i>	-	Hidayat <i>et al.</i> , 2007	
	<i>Thailandiomyces bisetulosus</i>	<i>Licuala longicalycata</i>	Pinruan <i>et al.</i> , 2007	
2010	<i>Astrocystis eleiodoxae</i>	<i>Eleiodoxa conferta</i>	Pinnoi <i>et al.</i> , 2010	
	<i>Baipadisphaeria spathulospora</i>	<i>Licuala longicalycata</i>	Pinruan <i>et al.</i> , 2010	

APPENDIX B

The list of fungi described from the palms

Fungus	Family	Order	Host	Note
<i>Ascomycetes genera</i>				
<i>Amphisphaeria</i> Ces. & De Not.	Amphisphaeriaceae	Xylariales	<i>Arenga</i> sp.	Yanna, 2001
<i>Amphisphaeria arengae</i>			<i>Phoenix dactylifera</i>	Yanna, 2001
<i>Amphisphaeria palmarum</i>				
<i>Aniptodera</i> Shearer & M.A. Mill.	Halosphaeriaceae	Microascales	<i>Nypa fruticans</i>	Pilantanapak, 2003
<i>Aniptodera cf. limnetica</i>			<i>Nypa fruticans</i>	Pilantanapak, 2003
<i>Aniptodera chesapeakeensis</i>			<i>Nypa fruticans</i>	Pilantanapak, 2003
<i>Aniptodera nypae</i>				
<i>Annulatascus</i> K.D. Hyde	Annulatascaceae	Incertae sedis	<i>Licuala longicalycata</i>	Pinruan <i>et al.</i> , 2007
<i>Annulatascus aquaticus</i>			<i>Licuala</i> sp.	Fröhlich and Hyde, 2000
<i>Annulatascus citriosporus</i>			<i>Licuala ramsayi</i>	Fröhlich and Hyde, 2000
<i>Annulatascus licualae</i>			<i>Licuala longicalycata</i>	Pinruan <i>et al.</i> , 2007
<i>Annulatascus palmae</i>			<i>Eleiodoxa conferta</i>	Pinnoi <i>et al.</i> , 2006
<i>Annulatascus</i> spp.			<i>Licuala paludosa</i>	Sarapat, 2004
<i>Annulatascus velatipora</i>			<i>Eleiodoxa conferta</i>	Pinnoi <i>et al.</i> , 2006
			<i>Licuala longicalycata</i>	Pinruan <i>et al.</i> , 2007
			-	Hyde <i>et al.</i> , 2000b
<i>Anthostomella</i> Sacc.	Xylariaceae	Xylariales	<i>Arenga tremula</i>	Yanna, 2001
<i>Anthostomella arengae</i>			<i>Licuala</i> sp.	Fröhlich and Hyde, 2000
<i>Anthostomella baileyi</i>			<i>Livistona muelleri</i>	Fröhlich and Hyde, 2000
			<i>Livistona</i> sp.	Fröhlich and Hyde, 2000
<i>Anthostomella bipileatus</i>			<i>Oncosperma horridum</i>	Fröhlich and Hyde, 2000
<i>Anthostomella birima</i>			<i>Calamus australis</i>	Fröhlich and Hyde, 2000
<i>Anthostomella capensis</i>			<i>Calamus moti</i>	Fröhlich and Hyde, 2000
			<i>Trachycarpus fortunei</i>	Taylor and Hyde, 2003
			<i>Phoenix dactylifera</i>	Yanna, 2001

Fungus	Family	Order	Host	Note
<i>Anthostomella clypeosa</i>			<i>Archontophoenix alexandrae</i>	Taylor and Hyde, 2003
<i>Anthostomella contaminans</i>			<i>Calamus</i> spp.	Fröhlich and Hyde, 2000
			<i>Phoenix dactylifera</i>	Fröhlich and Hyde, 2000; Yanna, 2001
<i>Anthostomella daemonoropsis</i>			-	Hyde <i>et al.</i> , 2000b
<i>Anthostomella donacina</i> cf. <i>arengae</i>			<i>Arenga</i> sp.	Yanna, 2001
<i>Anthostomella franciscae</i>			<i>Calamus</i> spp.	Taylor and Hyde, 2003
			<i>Cocos nucifera</i>	Taylor and Hyde, 2003
<i>Anthostomella leptospora</i>			<i>Calamus caryotooides</i>	Fröhlich and Hyde, 2000
			<i>Calamus radicalis</i>	Fröhlich and Hyde, 2000
<i>Anthostomella leucobasis</i>			<i>Mauritia flexuosa</i>	Fröhlich and Hyde, 2000
<i>Anthostomella limitata</i>			<i>Trachycarpus fortunei</i>	Fröhlich and Hyde, 2000
<i>Anthostomella livistonae</i>			<i>Livistona chinensis</i>	Taylor and Hyde, 2003
<i>Anthostomella livistonicola</i>			<i>Livistona</i> sp.	Yanna, 2001
<i>Anthostomella mindorense</i>			<i>Phoenix dactylifera</i>	Yanna, 2001
<i>Anthostomella mindorensis</i>			<i>Phoenix dactylifera</i>	Yanna, 2001
<i>Anthostomella minutoidea</i>			<i>Calamus australis</i>	Fröhlich and Hyde, 2000
			<i>Calamus conirostris</i>	Fröhlich and Hyde, 2000
<i>Anthostomella molleriana</i>			<i>Phoenix dactylifera</i>	Yanna, 2001
<i>Anthostomella nitidissima</i>			<i>Archontophoenix alexandrae</i>	Taylor and Hyde, 2003
			<i>Cocos nucifera</i>	Taylor and Hyde, 2003
<i>Anthostomella notabilis</i>			<i>Cocos nucifera</i>	Taylor and Hyde, 2003
<i>Anthostomella nummularioides</i>			<i>Phoenix canariensis</i>	Yanna, 2001
<i>Anthostomella oranopsis</i>			<i>Oranopsis appendiculata</i>	Yanna, 2001
<i>Anthostomella palmicola</i>			<i>Chamaerops</i> spp.	Taylor and Hyde, 2003
			<i>Cocos nucifera</i>	Taylor and Hyde, 2003
<i>Anthostomella palmiria</i>			<i>Phoenix</i> spp.	Taylor and Hyde, 2003
<i>Anthostomella pandani</i>			<i>Licuala longicalycata</i>	Pinruan <i>et al.</i> , 2007
			<i>Arenga</i> sp.	Fröhlich and Hyde, 2000
			<i>Calamus</i> sp.	Fröhlich and Hyde, 2000
			<i>Cocos nucifera</i>	Fröhlich and Hyde, 2000
				Fröhlich and Hyde, 2000

Fungus	Family	Order	Host	Note
<i>Apioclypea</i> K.D. Hyde	Clypeosphaeriaceae	Xylariales	<i>Trachycarpus fortunei</i>	Taylor and Hyde, 2003
<i>Apioclypea cocoicola</i>			<i>Cocos nucifera</i>	Taylor and Hyde, 2003
<i>Apioclypea indica</i>			<i>Phoenix humilis</i>	Yanna, 2001
<i>Apioclypea livistonae</i>			<i>Livistona</i> sp.	Yanna, 2001
<i>Apioclypea nonapiospora</i>			-	Hyde <i>et al.</i> , 2000b
<i>Apioclypea phoenicicola</i>			<i>Cocos nucifera</i>	Taylor and Hyde, 2003
<i>Apiospora</i> Sacc.	Apiosporaceae	Incertae sedis	<i>Phoenix</i> sp.	Yanna, 2001
<i>Apiospora montagnei</i>			-	Hyde <i>et al.</i> , 2000b
<i>Appendiclypea</i> K.D. Hyde	Incertae sedis	Xylariales	-	Pinnoi <i>et al.</i> , 2006
<i>Apioclypea aptiosporioides</i>			<i>Eleiodoxa conferta</i>	Yanna, 2001
<i>Apioclypea hongkongensis</i>			<i>Livistona chinensis</i>	
<i>Appendicospora</i> K.D. Hyde	Incertae sedis	Xylariales	<i>Corypha elata</i>	Fröhlich and Hyde, 2000
<i>Appendicospora coryphae</i>			<i>Licuala</i> sp.	Fröhlich and Hyde, 2000
<i>Appendicospora hongkongensis</i>			-	Hyde <i>et al.</i> , 2000b
<i>Appendispora</i> K.D. Hyde	Didymosphaeriaceae	Pleosporales	<i>Livistona chinensis</i>	Fröhlich and Hyde, 2000
<i>Appendispora frondicola</i>			<i>Oncosperma horridum</i>	Yanna, 2001
<i>Areomyces</i> K.D. Hyde	Hyponectriaceae	Xylariales	-	Hyde <i>et al.</i> , 2000b
<i>Areomyces brunneiensis</i>			<i>Calamus moti</i>	Fröhlich and Hyde, 2000
<i>Areomyces epigeni</i>			<i>Daemonorops</i> sp.	Fröhlich and Hyde, 2000
<i>Areomyces frondicola</i>			<i>Licuala longicalycata</i>	Pinruan <i>et al.</i> , 2007
			<i>Archontophoenix alexandrae</i>	Taylor and Hyde, 2003
			<i>Eugeiissona</i> sp.	Taylor and Hyde, 2003
			<i>Licuala longicalycata</i>	Pinruan <i>et al.</i> , 2007
			<i>Oraniosis</i> sp.	Taylor and Hyde, 2003
			-	Hyde <i>et al.</i> , 2000b
			<i>Licuala longicalycata</i>	Pinruan <i>et al.</i> , 2007

Fungus	Family	Order	Host	Note
<i>Arecomyces hedgerii</i>			<i>Archontophoenix alexandrae</i>	Taylor and Hyde, 2003
			<i>Jessenia bataua</i>	Fröhlich and Hyde, 2000
			<i>Jessenia</i> sp.	Taylor and Hyde, 2003
			<i>Licuala</i> spp.	Fröhlich and Hyde, 2000; Taylor and Hyde, 2003
<i>Arecomyces sekoyae</i>			<i>Mauritia flexuosa</i>	Fröhlich and Hyde, 2000
			<i>Jessenia bataua</i>	Fröhlich and Hyde, 2000
			<i>Licuala ramsayi</i>	Fröhlich and Hyde, 2000
<i>Arecomyces tetrasporus</i>			<i>Mauritia flexuosa</i>	Fröhlich and Hyde, 2000
			<i>Calamus radicalis</i>	Fröhlich and Hyde, 2000
			<i>Calamus tetradactylus</i>	Fröhlich and Hyde, 2000
			<i>Licuala ramsayi</i>	Fröhlich and Hyde, 2000
			<i>Mauritia flexuosa</i>	Fröhlich and Hyde, 2000
			<i>Phytelephas</i> sp.	Fröhlich and Hyde, 2000
<i>Arecophila</i> K.D. Hyde	Incertae sedis	Xylariales	-	Hyde <i>et al.</i> , 2000b
<i>Arecophila gulubicolola</i>			<i>Calamus</i> spp.	Fröhlich and Hyde, 2000
<i>Arecophila notabilis</i>			<i>Daemonorops margaritae</i>	Fröhlich and Hyde, 2000
<i>Arecophila serrulata</i>			<i>Archontophoenix alexandrae</i>	Taylor and Hyde, 2003
			<i>Korthalsia</i> sp.	Taylor and Hyde, 2003
			<i>Sabal</i> sp.	Taylor and Hyde, 2003
			<i>Serenoa</i> sp.	Taylor and Hyde, 2003
			<i>Licuala longicalycata</i>	Pinruan <i>et al.</i> , 2007
<i>Arecophila sriatispora</i>				
<i>Ascominuta</i> Ranghoo & K.D. Hyde	Incertae sedis	Incertae sedis	<i>Licuala longicalycata</i>	Pinruan <i>et al.</i> , 2007
<i>Ascominuta lignicola</i>				
<i>Ascotaiwania</i> Sivan. & H.S. Chang	Incertae sedis	Sordariales	<i>Licuala ramsayi</i>	Fröhlich and Hyde, 2000
<i>Ascotaiwania licualae</i>				Hyde <i>et al.</i> , 2000b
<i>Ascotaiwania palmicola</i>				
<i>Astrocystis</i> Berk. & Broome	Xylariaceae	Xylariales	<i>Arenga saccharifera</i>	Yanna, 2001
<i>Astrocystis cocoëns</i>			<i>Eleiodoxa conferta</i>	Pinnoi <i>et al.</i> , 2006
<i>Astrocystis eleiodoxae</i>			<i>Calamus</i> sp.	Fröhlich and Hyde, 2000
<i>Astrocystis rachidis</i>				

Fungus	Family	Order	Host	Note
<i>Astrocystis sinensis</i>			<i>Elaeis</i> sp.	Fröhlich and Hyde, 2000
<i>Astrocystis</i> sp.			<i>Jessenia batava</i>	Fröhlich and Hyde, 2000
<i>Astrophaeriella</i> Syd. & P. Syd.	Melanommataceae		<i>Korthalsia</i> sp.	Fröhlich and Hyde, 2000
<i>Astrophaeriella africana</i>			<i>Licuala longicalycata</i>	Pinruan <i>et al.</i> , 2007
<i>Astrophaeriella aosimensis</i>			<i>Mauritia flexuosa</i>	Fröhlich and Hyde, 2000
<i>Astrophaeriella angustispora</i>			<i>Nypa fruticans</i>	Fröhlich and Hyde, 2000
<i>Astrophaeriella aquatica</i>			<i>Pinanga</i> sp.	Fröhlich and Hyde, 2000
<i>Astrophaeriella bakeriana</i>			<i>Trachycarpus fortunei</i>	Taylor and Hyde, 2003
<i>Astrosphaeriella floridana</i>			-	Hyde <i>et al.</i> , 2000b
<i>Astrosphaeriella frondicola</i>			<i>Licuala longicalycata</i>	Pinruan <i>et al.</i> , 2007
<i>Astrosphaeriella livistonicola</i>			<i>Arenga undulatifolia</i>	Yanna, 2001
<i>Astrosphaeriella lophiostomopsis</i>			<i>Livistona</i> sp.	Yanna, 2001
<i>Astrosphaeriella malayensis</i>			<i>Eleiodoxa conferta</i>	Pinnoi <i>et al.</i> , 2006
<i>Astrosphaeriella mangrovei</i>			<i>Licuala longicalycata</i>	Pinruan <i>et al.</i> , 2007
<i>Astrosphaeriella nypae</i>			<i>Livistona</i> sp.	Yanna, 2001
		Pleosporales	<i>Licuala longicalycata</i>	Pinruan <i>et al.</i> , 2007
			<i>Archontophoenix alexandrae</i>	Taylor and Hyde, 2003
			<i>Calamus</i> spp.	Taylor and Hyde, 2003
			<i>Livistona chinensis</i>	Yanna, 2001
			<i>Livistona</i> spp.	Taylor and Hyde, 2003
			<i>Trachycarpus fortunei</i>	Taylor and Hyde, 2003
			<i>Licuala longicalycata</i>	Pinruan <i>et al.</i> , 2007
			<i>Licuala longicalycata</i>	Pinruan <i>et al.</i> , 2007
			<i>Oraniopsis appendiculata</i>	Yanna, 2001
			<i>Licuala longicalycata</i>	Pinruan <i>et al.</i> , 2007
			<i>Livistona chinensis</i>	Yanna, 2001
			<i>Arenga undulatifolia</i>	Yanna, 2001
			<i>Licuala longicalycata</i>	Pinruan <i>et al.</i> , 2007
			<i>Licuala longicalycata</i>	Pinruan <i>et al.</i> , 2007
			<i>Nypa fruticans</i>	Pilantanapak, 2003
			<i>Nypa fruticans</i>	Pilantanapak, 2003

Fungus	Family	Order	Host	Note
<i>Astrosphaeriella papillata</i>			<i>Licuala longicalycata</i>	Pinruan <i>et al.</i> , 2007
<i>Astrosphaeriella splendida</i>			-	Hyde <i>et al.</i> , 2000b
<i>Astrosphaeriella striatispora</i>			<i>Nypa fruticans</i>	Pilantanapak, 2003
<i>Astrosphaeriella cf. striatispora</i>			<i>Nypa fruticans</i>	Pilantanapak, 2003
<i>Astrosphaeriella</i> spp.			<i>Calamus</i> sp.	Pinnoi <i>et al.</i> , 2009
			<i>Eleiodoxa conferta</i>	Pinnoi <i>et al.</i> , 2006
			<i>Korthalsia lacinosa</i>	Sarapat, 2004
			<i>Licuala longicalycata</i>	Pinruan <i>et al.</i> , 2007
			<i>Calamus</i> sp.	Pinnoi <i>et al.</i> , 2009
<i>Astrosphaeriella vestivius</i>			-	Hyde <i>et al.</i> , 2000b
<i>Asymmetricospora</i> J. Fröhl. & K.D. Hyde	Melanommataceae	Pleosporales	-	Hyde <i>et al.</i> , 2000b
<i>Asymmetricospora calamicola</i>			-	Yanna, 2001
<i>Auerswaldia</i> Sacc.	Dothideaceae	Dothideales	<i>Arenga pinnata</i>	
<i>Auerswaldia lophiostomacea</i>			<i>Archontophoenix alexandrae</i>	Taylor and Hyde, 2003
<i>Bionectria</i> Speg.	Bionectriaceae	Hypocreales	-	Hyde <i>et al.</i> , 2000b
<i>Bionectria byssicola</i>			<i>Calamus australis</i>	Fröhlich and Hyde, 2000
<i>Bionectria grammicospora</i>			<i>Archontophoenix alexandrae</i>	Taylor and Hyde, 2003
<i>Bionectria ochroleuca</i>			<i>Eleiodoxa conferta</i>	Pinnoi <i>et al.</i> , 2006
<i>Bionectria</i> sp.			-	
<i>Botryosphaeria</i> Ces. & De Not.	Botryosphaeriaceae	Botryosphaeriales	<i>Archontophoenix alexandrae</i>	Taylor and Hyde, 2003
<i>Botryosphaeria archontophoenicis</i>			<i>Trachycarpus fortunei</i>	Taylor and Hyde, 2003
<i>Botryosphaeria brunneispora</i>			<i>Cocos nucifera</i>	Taylor and Hyde, 2003
<i>Botryosphaeria cocoicola</i>			<i>Archontophoenix alexandrae</i>	Taylor and Hyde, 2003
<i>Botryosphaeria dothidea</i>			<i>Trachycarpus fortunei</i>	Taylor and Hyde, 2003
<i>Botryosphaeria elaeidis</i>			-	Hyde <i>et al.</i> , 2000b
<i>Botryosphaeria quercuum</i>			<i>Phoenix canariensis</i>	Yanna, 2001
<i>Botryosphaeria rhodina</i>			<i>Daemonorops margaritae</i>	Fröhlich and Hyde, 2000
<i>Botryosphaeria ribis</i>			<i>Trachycarpus fortunei</i>	Taylor and Hyde, 2003
<i>Brunnicipiospora</i>	Clypeosphaeriaceae	Xylariales	-	
K.D. Hyde, J. Fröhl. & Joanne E. Taylor (1998)			-	
<i>Brunnicipiospora javensis</i>			-	Hyde <i>et al.</i> , 2000b

Fungus	Family	Order	Host	Note
Byssosphaeria Cooke	Melanommataceae	Pleosporales	-	Hyde <i>et al.</i> , 2000b
<i>Byssosphaeria schiedermayeriana</i>			<i>Calamus australis</i>	Fröhlich and Hyde, 2000
Calonectria De Not.	Nectriaceae	Hypocreales	-	Hyde <i>et al.</i> , 2000b
<i>Calonectria pyrochroa</i>				
Cannonia Joanne E. Taylor & K.D. Hyde	Xylariaceae	Xylariales	-	
<i>Cannonia australis</i>				
Capsulospora K.D. Hyde	Incertae sedis	Xylariales	-	
<i>Capsulospora angustispora</i>			<i>Licuala</i> sp.	Fröhlich and Hyde, 2000
<i>Capsulospora australiensis</i>			<i>Licuala ramsayi</i>	Fröhlich and Hyde, 2000
<i>Capsulospora bipolaris</i>			<i>Calamus</i> sp.	Fröhlich and Hyde, 2000
<i>Capsulospora borneoensis</i>			<i>Calamus contirostris</i>	Fröhlich and Hyde, 2000
<i>Capsulospora brunneispora</i>			<i>Archontophoenix alexandrae</i>	Taylor and Hyde, 2003
			<i>Calamus</i> spp.	Fröhlich and Hyde, 2000
			<i>Daemonorops</i> sp.	Fröhlich and Hyde, 2000
			<i>Eugissonia</i> sp.	Fröhlich and Hyde, 2000
			<i>Geonoma</i> sp.	Fröhlich and Hyde, 2000
			<i>Licuala</i> sp.	Fröhlich and Hyde, 2000
			<i>Oncosperma</i> sp.	Fröhlich and Hyde, 2000
<i>Capsulospora calamicola</i>			<i>Calamus</i> spp.	Fröhlich and Hyde, 2000
			<i>Cocos nucifera</i>	Taylor and Hyde, 2003
			<i>Daemonorops margaritae</i>	Fröhlich and Hyde, 2000
<i>Capsulospora frondicola</i>			<i>Calamus</i> spp.	Fröhlich and Hyde, 2000
			<i>Daemonorops</i> spp.	Fröhlich and Hyde, 2000
			<i>Eleiodoxa conferta</i>	Pinnoi <i>et al.</i> , 2006
			<i>Licuala</i> spp.	Fröhlich and Hyde, 2000
			<i>Pinanga</i> sp.	Fröhlich and Hyde, 2000
			-	Hyde <i>et al.</i> , 2000b
			<i>Archontophoenix alexandrae</i>	Taylor and Hyde, 2003
<i>Capsulospora</i> sp.			<i>Trachycarpus fortunei</i>	Taylor and Hyde, 2003
<i>Capsulospora trachycarpa</i>				
Carinispora K.D Hyde	Phaeosphaeriaceae	Pleosporales	-	Hyde <i>et al.</i> , 2000b
<i>Carinispora nypae</i>			<i>Licuala longicalycata</i>	Pinruan <i>et al.</i> , 2007

Fungus	Family	Order	Host	Note
<i>Carinispora velatispora</i>	Zopfiaceae	Pleosporales	<i>Oncosperma tigillarum</i>	Yanna, 2001
Caryospora De Not.				
<i>Caryospora</i> sp.			<i>Licuala longicalycata</i>	Pinruan <i>et al.</i> , 2007
Catabotrys Theiss. & Syd.	Catabotrydaceae	Boliales	<i>Archontophoenix alexandrae</i>	Fröhlich and Hyde, 2000; Taylor and Hyde, 2003
<i>Catabotrys deciduum</i>			<i>Cocos nucifera</i>	Taylor and Hyde, 2003
			<i>Livistona chinensis</i>	Fröhlich and Hyde, 2000
			-	Hyde <i>et al.</i> , 2000b
			-	Hyde <i>et al.</i> , 2000b
Caudatispora J. Fröhl. & K.D. Hyde	Incertae sedis	Incertae sedis		
<i>Caudatispora palmicola</i>				
Cenangiumella J. Fröhl. & K.D. Hyde	Helotiaceae	Helotiales	<i>Calamus conirostris</i>	Fröhlich and Hyde, 2000
<i>Cenangiumella rattamicola</i>			<i>Daemonorops oxycarpa</i>	Fröhlich and Hyde, 2000
			<i>Daemonorops sparsiflora</i>	Fröhlich and Hyde, 2000
Ceratocystis Ellis & Halst.	Ceratocystidaceae	Microascales		
<i>Ceratocystis paradoxa</i>			<i>Phoenix canariensis</i>	Yanna, 2001
<i>Ceratocystis radicola</i>			<i>Phoenix dactylifera</i>	Yanna, 2001
Ceratostomella Sacc.	Annulatascaceae	Incertae sedis		
<i>Ceratostomella radicolola</i>			<i>Phoenix dactylifera</i>	Yanna, 2001
Chaetosphaeria Tul. & C. Tul.	Chaetosphaeriaceae	Chaetosphaeriales		
<i>Chaetosphaeria hongkongensis</i>			-	Hyde <i>et al.</i> , 2000b
<i>Chaetosphaeria</i> spp.			<i>Archontophoenix alexandrae</i>	Taylor and Hyde, 2003
			<i>Calamus</i> sp.	Pinnoi <i>et al.</i> , 2009
			<i>Licuala longicalycata</i>	Pinruan <i>et al.</i> , 2007
Coccostromopsis Plunkett	Phyllachoraceae	Phyllachorales		
<i>Coccostromopsis diplothemii</i>			-	Hyde <i>et al.</i> , 2000b
Cocolola K.D. Hyde	Phaeochoraceae	Phyllachorales		
<i>Cocolola cylindrospora</i>			-	Hyde <i>et al.</i> , 2000b
<i>Cocolola livistonicola</i>			<i>Livistona chinensis</i>	Yanna, 2001
Coniochaeta (Sacc.) Cooke	Coniochaetaceae	Coniochaetales		
<i>Coniochaeta</i> cf. <i>Nepalica</i>			<i>Trachycarpus fortunei</i>	Taylor and Hyde, 2003

Fungus	Family	Order	Host	Note
<i>Coniochaeta tilakii</i>			<i>Phoenix sylvestris</i>	Yanna, 2001
<i>Cosmospora Rabenh.</i>	Nectriaceae	Hypocreales		
<i>Cosmospora purpureocolla</i>			<i>Calamus australis</i>	Fröhlich and Hyde, 2000
<i>Cyanopulvis J. Fröhl. & K.D. Hyde</i>	Xylariaceae	Xylariales		
<i>Cyanopulvis australiensis</i>			<i>Calamus australis</i>	Fröhlich and Hyde, 2000
<i>Diaporthe Nitschke</i>	Diaporthaceae	Diaporthales		
<i>Diaporthe arctii</i>			<i>Trachycarpus fortunei</i>	Taylor and Hyde, 2003
<i>Diaporthe dakotensis</i>			<i>Trachycarpus fortunei</i>	Taylor and Hyde, 2003
<i>Diaporthe cf. medusaea</i>			<i>Archontophoenix alexandriae</i>	Taylor and Hyde, 2003
<i>Diaporthe palmarum</i>			<i>Archontophoenix alexandriae</i>	Taylor and Hyde, 2003
<i>Diaporthe pardalota</i>			<i>Trachycarpus fortunei</i>	Hyde <i>et al.</i> , 2000b
<i>Diaporthe phoenicis</i>			<i>Archontophoenix alexandriae</i>	Taylor and Hyde, 2003
<i>Diaporthe cf. salsuginosa</i>			<i>Trachycarpus fortunei</i>	Taylor and Hyde, 2003
<i>Diaporthe</i> spp.			<i>Calamus</i> spp.	Fröhlich and Hyde, 2000
			<i>Phoenix dactylifera</i>	Fröhlich and Hyde, 2000
			<i>Livistona chinensis</i>	Fröhlich and Hyde, 2000
			<i>Calamus</i> spp.	Fröhlich and Hyde, 2000
			<i>Eleiodoxa conferta</i>	Pinnoi <i>et al.</i> , 2009
			<i>Phoenix</i> sp.	Pinnoi <i>et al.</i> , 2006
			<i>Trachycarpus fortunei</i>	Yanna, 2001
<i>Diatrype Fr.</i>	Diatrypaceae	Xylariales		
<i>Diatrype chlorosarca</i>			<i>Archontophoenix alexandriae</i>	Taylor and Hyde, 2003
<i>Diatrypella (Ces. & De Not.) De Not.</i>	Diatrypaceae	Xylariales		
<i>Diatrypella borassi</i>			<i>Trachycarpus fortunei</i>	Taylor and Hyde, 2003
			-	Hyde <i>et al.</i> , 2000b
			<i>Archontophoenix alexandriae</i>	Taylor and Hyde, 2003
			<i>Borassus flabellifer</i>	Taylor and Hyde, 2003
			<i>Trachycarpus fortunei</i>	Taylor and Hyde, 2003
			-	Hyde <i>et al.</i> , 2000b
<i>Dicephalospora Spooner</i>	Rutstroemiaceae	Helotiales		
<i>Dicephalospora rifocornea</i>			<i>Livistona chinensis</i>	Yanna, 2001

Fungus	Family	Order	Host	Note
<i>Didymella</i> Sacc. <i>Didymella cocos</i> <i>Didymella</i> spp.	Incertae sedis	Pleosporales	var. <i>boninensis</i> - <i>Phoenix dactylifera</i> <i>Trachycarpus fortunei</i>	Hyde <i>et al.</i> , 2000b Yanna, 2001 Taylor and Hyde, 2003
<i>Didymopleella</i> Munkv <i>Didymopleella</i> sp.	Incertae sedis	Incertae sedis	<i>Phoenix reclinata</i>	Yanna, 2001
<i>Didymosphaeria</i> Fockel <i>Didymosphaeria bisphaerica</i> <i>Didymosphaeria calamicola</i> <i>Didymosphaeria minutelloides</i> <i>Didymosphaeria smaragdina</i>	Didymosphaeriaceae	Pleosporales	<i>Licuala longiclycata</i> - <i>Arenga pinnata</i> <i>Phoenix dactylifera</i>	Pinruan <i>et al.</i> , 2007 Hyde <i>et al.</i> , 2000b Yanna, 2001 Yanna, 2001
<i>Dothidothia</i> Höhn <i>Dothidothia ramulicola</i> <i>Dothidothia</i> sp.	Dothidothiaceae	Pleosporales	- <i>Licuala paludosa</i> <i>Daemonorops angustifolia</i>	Hyde <i>et al.</i> , 2000b Sarapat, 2004 Sarapat, 2004
<i>Durispora</i> K.D. Hyde <i>Durispora elaeidicola</i>	Diaporthaceae	Diaporthales	<i>Calamus comptus</i> <i>Elaeisis guineensis</i> -	Fröhlich and Hyde, 2000 Fröhlich and Hyde, 2000 Hyde <i>et al.</i> , 2000b
<i>Endoconidiophora</i> Münch <i>Endoconidiophora paradoxa</i>	Ceratocystidaceae	Microascales	<i>Phoenix dactylifera</i>	Yanna, 2001
<i>Eutypa</i> Tul. & C. Tul. <i>Eutypa bathurstensis</i> <i>Eutypa rattanicola</i>	Diatrypaeaceae	Xylariales	-	Hyde <i>et al.</i> , 2000b Fröhlich and Hyde, 2000
<i>Eutypella</i> (Nitschke) Sacc. <i>Eutypella arecae</i>	Diatrypaeaceae	Xylariales	<i>Calamus moti</i>	Fröhlich and Hyde, 2000
<i>Fasciatispora</i> K.D. Hyde <i>Fasciatispora lignicola</i> <i>Fasciatispora petrakii</i>	Incertae sedis	Xylariales	<i>Areca catechu</i> <i>Calamus tetradactylus</i> <i>Trachycarpus fortunei</i> - <i>Nypa fruticans</i> <i>Archontophoenix alexandrae</i>	Fröhlich and Hyde, 2000 Fröhlich and Hyde, 2000 Taylor and Hyde, 2003 Hyde <i>et al.</i> , 2000b Pilantanapak, 2003 Taylor and Hyde, 2003

Fungus	Family	Order	Host	Note
<i>Flammispora</i>	Incertae sedis		<i>Calamus</i> spp.	Fröhlich and Hyde, 2000;
Pinruan <i>et al.</i> , 2007, Sakay., K.D. Hyde & E.B.G. Jones				Taylor and Hyde, 2003
<i>Flammispora bioteca</i>			<i>Cocos nucifera</i>	Taylor and Hyde, 2003
<i>Fluviatispora</i> K.D. Hyde			<i>Cyrtostachys lakka</i>	Fröhlich and Hyde, 2000
<i>Fluviatispora reticulata</i>			<i>Cyrtostachys</i> spp.	Taylor and Hyde, 2003
			<i>Daemonorops margaritae</i>	Fröhlich and Hyde, 2000
			<i>Daemonorops</i> spp.	Fröhlich and Hyde, 2000;
			<i>Elaeis</i> spp.	Taylor and Hyde, 2003
			<i>Licuala ramsayi</i>	Fröhlich and Hyde, 2000;
			<i>Livistona chinensis</i>	Fröhlich and Hyde, 2000
			<i>Livistona</i> spp.	Fröhlich and Hyde, 2000;
			<i>Metroxylon sagu</i>	Taylor and Hyde, 2003
			<i>Oncosperma horridum</i>	Fröhlich and Hyde, 2000
			<i>Sabal serrulata</i>	Fröhlich and Hyde, 2000
			<i>Trachycarpus fortunei</i>	Fröhlich and Hyde, 2000
			-	Taylor and Hyde, 2003
			-	Hyde <i>et al.</i> , 2000b
		Incertae sedis		
			<i>Licuala longicalycata</i>	Pinruan <i>et al.</i> , 2007
		Microascales		
			<i>Eleiodoxa conferta</i>	Pinnoi <i>et al.</i> , 2006
			<i>Livistona</i> sp.	Yanna, 2001
			<i>Livistona</i> sp.	Yanna, 2001
		Xylariales		
			-	Hyde <i>et al.</i> , 2000b
		Incertae sedis		
			<i>Calamus australis</i>	Fröhlich and Hyde, 2000
			<i>Calamus moti</i>	Fröhlich and Hyde, 2000
			<i>Licuala</i> sp.	Fröhlich and Hyde, 2000
			-	Hyde <i>et al.</i> , 2000b

Fungus	Family	Order	Host	Note
Frondispora K.D. <i>Frondispora bicalcarata</i>	Incertae sedis	Xylariales	-	Hyde <i>et al.</i> , 2000b
Gaeumannomyces Arx & D.L. Olivier <i>Gaeumannomyces licuatae</i>	Magnaporthaceae	Incertae sedis	<i>Licuata</i> sp. <i>Eleiodoxa conferta</i>	Fröhlich and Hyde, 2000 Pinnoi <i>et al.</i> , 2006
Gilletiella Sacc. & P. Syd. <i>Gilletiella latemaculans</i>	Incertae sedis	Incertae sedis	<i>Arenga</i> sp.	Yanna, 2001
Glomerella Spauld. & H. Schrenk <i>Glomerellacingulata</i>	Glomerellaceae	Incertae sedis	<i>Archontophoenix alexandrae</i> <i>Trachycarpus fortunei</i>	Taylor and Hyde, 2003 Taylor and Hyde, 2003
Glomerella sp.			<i>Licuata longiclycata</i>	Hyde <i>et al.</i> , 2000b Pinruan <i>et al.</i> , 2007
Gloniopsis De Not. <i>Gloniopsis praelonga</i> <i>Gloniopsis smilacis</i>	Hysteriaceae	Hysteriales	<i>Trachycarpus fortunei</i> <i>Cocos nucifera</i>	Taylor and Hyde, 2003 Taylor and Hyde, 200
Glonium Muhl. <i>Glonium abbreviatum</i> <i>Glonium</i> cf. <i>caucasicum</i>	Hysteriaceae	Hysteriales	<i>Daemonorops margaritae</i> <i>Daemonorops margaritae</i>	Fröhlich and Hyde, 2000 Fröhlich and Hyde, 2000
Gnomonia Ces. & De Not. <i>Gnomonia</i> sp.	Gnomoniaceae	Diaporthales	<i>Eleiodoxa conferta</i>	Pinnoi <i>et al.</i> , 2006
Guignardia Viala & Ravaz <i>Guignardia arengae</i>	Botryosphaeriaceae	Botryosphaeriales	<i>Archontophoenix alexandrae</i> <i>Arenga</i> sp.	Taylor and Hyde, 2003 Taylor and Hyde, 2003; Yanna, 2001
<i>Guignardia calami</i> <i>Guignardia cocogena</i>			- <i>Archontophoenix alexandrae</i> <i>Cocos nucifera</i>	Hyde <i>et al.</i> , 2000b Taylor and Hyde, 2003 Taylor and Hyde, 2003
<i>Guignardia manokwaria</i>			<i>Trachycarpus fortunei</i> <i>Archontophoenix alexandrae</i> <i>Calamus australis</i> <i>Calamus moti</i> <i>Cocos nucifera</i>	Taylor and Hyde, 2003 Fröhlich and Hyde, 2000 Fröhlich and Hyde, 2000 Taylor and Hyde, 2003

Fungus	Family	Order	Host	Note
Gymnoascus Baran. <i>Gymnoascus setosus</i>	Gymnoascaceae	Onygenales	<i>Licuala longicalycata</i>	Pinruan <i>et al.</i> , 2007
Haematonectria Samuels & Nirenberg <i>Haematonectria</i> cf. <i>haematococa</i>	Nectriaceae	Hypocreales	<i>Phoenix dactylifera</i>	Yanna, 2001
Halorosellinia Whalley, E.B.G. Jones, K.D. Hyde & Laessøe <i>Halorosellinia oceanica</i>	Xylariaceae	Xylariales	<i>Calamus australis</i>	Fröhlich and Hyde, 2000
Halosarpheia Kohlm. & E. Kohlm. <i>Halosarpheia</i> sp.	Halosphaeriaceae	Microascales	<i>Nypa fruticans</i>	Pilantanapak, 2003
Helicascus Kohlm. <i>Helicascus nypae</i>	Incertae sedis	Pleiosporales	<i>Nypa fruticans</i>	Pilantanapak, 2003
Herpotrichia Fockel <i>Herpotrichia calamicola</i> <i>Herpotrichia palmicola</i>	Incertae sedis	Pleiosporales	<i>Nypa fruticans</i> <i>Calamus carytoides</i> <i>Calamus australis</i> <i>Calamus carytoides</i> <i>Daemonorops margaritae</i> <i>Licuala ramsayi</i>	Pilantanapak, 2003 Fröhlich and Hyde, 2000 Fröhlich and Hyde, 2000 Fröhlich and Hyde, 2000 Fröhlich and Hyde, 2000 Fröhlich and Hyde, 2000
Hydropisphaera Dumort. <i>Hydropisphaera ciliata</i> <i>Hydropisphaera macrarenula</i> <i>Hydropisphaera peziza</i>	Bionectriaceae	Hypocreales	<i>Archontophoenix alexandrae</i> - <i>Calamus australis</i> <i>Rhopalostylis sapida</i> <i>Cocos nucifera</i>	Taylor and Hyde, 2003 Hyde <i>et al.</i> , 2000b Fröhlich and Hyde, 2000 Fröhlich and Hyde, 2000 Taylor and Hyde, 2003
Hymenoscyphus Gray <i>Hymenoscyphus</i> cf. <i>lasiopodius</i> <i>Hymenoscyphus</i> spp.	Helotiaceae	Helotiales	<i>Archontophoenix alexandrae</i> - <i>Daemonorops angustifolia</i>	Taylor and Hyde, 2003 Hyde <i>et al.</i> , 2000b, Sarapat, 2004
Hypocrea Fr. <i>Hypocrea luteovirens</i> <i>Hypocrea nigricans</i> cf. <i>nigricans</i> <i>Hypocrea</i> sp.	Hypocreaceae	Hypocreales	<i>Livistona subglobosa</i> <i>Livistona subglobosa</i> <i>Trachycarpus fortunei</i>	Yanna, 2001 Yanna, 2001 Taylor and Hyde, 2003

Fungus	Family	Order	Host	Note
<i>Hypocrea tawa</i>				Hyde <i>et al.</i> , 2000b
<i>Hypocrea</i> cf. <i>tawa</i>				Fröhlich and Hyde, 2000
<i>Hypoderma</i> De Not.	Rhytismataceae	Rhytismatales	<i>Mauritia flexuosa</i>	
<i>Hypoderma</i> sp.			<i>Licuala paludosa</i> <i>Eleiodoxa conferta</i>	Sarapat, 2004 Sarapat, 2004
<i>Hypoxylon</i> Bull.	Xylariaceae	Xylariales	<i>Livistona</i> sp.	Yanna, 2001
<i>Hypoxylon maculosum</i>			<i>Calamus caryotoides</i>	Fröhlich and Hyde, 2000
<i>Hypoxylon rubellum</i>				
<i>Hysterium</i> Pers.	Hysteriaceae	Hysteriales	<i>Cocos nucifera</i>	Taylor and Hyde, 2003
<i>Hysterium angustatum</i>				
<i>Hysteroglyphium</i> Corda	Hysteriaceae	Hysteriales	<i>Trachycarpus fortunei</i>	Taylor and Hyde, 2003
<i>Hysteroglyphium mori</i>				
<i>Ijuhya</i> Starbäck	Bionectriaceae	Hypocreales	<i>Calamus tetradactylus</i> <i>Calamus walkerii</i> <i>Livistona chinensis</i>	Fröhlich and Hyde, 2000 Fröhlich and Hyde, 2000 Fröhlich and Hyde, 2000
<i>Ijuhya hongkongensis</i>				
<i>Iodosphaeria</i> Samuels, E. Müll. & Petrini	Iodosphaeriaceae	Xylariales		Hyde <i>et al.</i> , 2000b
<i>Iodosphaeria hongkongensis</i>				
<i>Jahnula</i> Kirschst	Aliquandostipitaceae	Jahnulales		Pinnoi <i>et al.</i> , 2006 Pinruan <i>et al.</i> , 2007
<i>Jahnula appendiculata</i>			<i>Eleiodoxa conferta</i> <i>Licuala longicalycata</i>	
<i>Kallichroma</i> Kohlm. & Volk.-Kohlm.	Bionectriaceae	Hypocreales	<i>Nypa fruticans</i>	Pilantanapak, 2003
<i>Kallichroma tethys</i>				
<i>Keissleriella</i> Höhn.	Massarinaceae	Pleosporales	<i>Trachycarpus fortunei</i>	Taylor and Hyde, 2003 Hyde <i>et al.</i> , 2000b
<i>Keissleriella cladophila</i>				
<i>Kirschsteiniothelia</i> D. Hawksw.	Incertae sedis	Incertae sedis		Yanna, 2001
<i>Kirschsteiniothelia aethiops</i>			<i>Phoenix dactylifera</i>	
<i>Kretzschmaria</i> Fr.	Xylariaceae	Xylariales	<i>Phoenix sylvestris</i>	Yanna, 2001
<i>Kretzschmaria phoenicis</i>				
<i>Lachnellula</i> P. Karst.	Hyaloscyphaceae	Helotiales	<i>Calamus australis</i> <i>Calamus tetradactylus</i>	Fröhlich and Hyde, 2000 Fröhlich and Hyde, 2000
<i>Lachnellula rattanicola</i>				

Fungus	Family	Order	Host	Note
<i>Lachnellula</i> sp.			<i>Calamus siamensis</i>	Sarapat, 2004
Lachnum Retz.	Hyaloscyphaceae	Helotiales	<i>Daemonorops margaritae</i>	Fröhlich and Hyde, 2000
<i>Lachnum abnormis</i>			- <i>Calamus</i> sp.	Hyde <i>et al.</i> , 2000b Pinnoi <i>et al.</i> , 2009
<i>Lachnum edwardsii</i>			<i>Livistona chinensis</i>	Yanna, 2001
<i>Lachnum palmae</i>			var. <i>boninensis</i>	
			<i>Calamus controstris</i>	Fröhlich and Hyde, 2000
			<i>Calamus moti</i>	Fröhlich and Hyde, 2000
			<i>Livistona chinensis</i>	Fröhlich and Hyde, 2000
			<i>Rhopalostylis sapida</i>	Fröhlich and Hyde, 2000
<i>Lachnum pretzelianum</i>			-	Hyde <i>et al.</i> , 2000b
			<i>Livistona chinensis</i>	Yanna, 2001
			var. <i>boninensis</i>	
			<i>Livistona</i> sp.	Yanna, 2001
			<i>Caryota urens</i>	Sarapat, 2004
Lasionectria (Sacc.) Cooke	Bionectriaceae	Hypocreales	<i>Calamus australis</i>	Fröhlich and Hyde, 2000
<i>Lasionectria calamicola</i>			<i>Calamus controstris</i>	Fröhlich and Hyde, 2000
Lasiosphaeria Ces. & De Not.	Lasiosphaeriaceae	Sordariales	-	Hyde <i>et al.</i> , 2000b
<i>Lasiosphaeria alexandrae</i>			<i>Metroxylon sagu</i>	Sarapat, 2004
<i>Lasiosphaeria</i> sp.				
Lanceispora	Incertae sedis	Xylariales		
Nakagiri, Okane, Tad. Ito & Katum.			<i>Licuala longicalycata</i>	Pinruan <i>et al.</i> , 2007
<i>Lanceispora amphibia</i>				
Leiosphaerella Höhn.	Incertae sedis	Xylariales	<i>Phoenix dactylifera</i>	Yanna, 2001
<i>Leiosphaerella phoenicis</i>				
Lepteutypa Petr.	Amphisphaeriaceae	Xylariales	-	Hyde <i>et al.</i> , 2000b
<i>Lepteutypa hexagonalis</i>			<i>Phoenix canariensis</i>	Yanna, 2001
Leptosphaeria Ces. & De Not.	Leptosphaeriaceae	Pleosporales	-	Hyde <i>et al.</i> , 2000b
<i>Leptosphaeria batumensis</i>			<i>Livistona sinensis</i>	Yanna, 2001
<i>Leptosphaeria michotii</i>				

Fungus	Family	Order	Host	Note
<i>Lophiostoma frondisubmersa</i>			<i>Trachycarpus fortunei</i>	Taylor and Hyde, 2003
<i>Lophiostoma palmicolum</i>			<i>Eleiodoxa conferta</i>	Pinnoi <i>et al.</i> , 2006
<i>Lophiostoma rubi</i>			<i>Licuala longicalycata</i>	Pinruan <i>et al.</i> , 2007
Lophiotrema Sacc.			<i>Archontophoenix alexandrae</i>	Taylor and Hyde, 2003
<i>Lophiotrema bolivarii</i>			<i>Livistona</i> sp.	Taylor and Hyde, 2003
Lophodermium Chevall.			<i>Cocos nucifera</i>	Taylor and Hyde, 2003
<i>Lophodermium arundinaceum</i>			<i>Trachycarpus fortunei</i>	Taylor and Hyde, 2003
<i>Lophodermium australiense</i>			<i>Phoenix canariensis</i>	Yanna, 2001
<i>Lophodermium borneoensis</i>			<i>Livistona</i> sp.	Yanna, 2001
<i>Lophodermium licuatae</i>			-	Hyde <i>et al.</i> , 2000b
<i>Lophodermium</i> spp.			<i>Licuala</i> sp.	Fröhlich and Hyde, 2000
Lubworthia G.K. Sutherl.			<i>Licuala longicalycata</i>	Pinruan <i>et al.</i> , 2007
<i>Lubworthia cf. grandispora</i>			<i>Licuala</i> sp.	Fröhlich and Hyde, 2000
<i>Lubworthia grandispora</i>			<i>Eleiodoxa conferta</i>	Pinnoi <i>et al.</i> , 2006
Macrovalsaria Petr.			<i>Eleiodoxa conferta</i>	Sarapat, 2004
<i>Macrovalsaria megalospora</i>			<i>Licuala paludosa</i>	Sarapat, 2004
			<i>Metroxylon sagu</i>	Sarapat, 2004
			<i>Nypa fruticans</i>	Pilantanapak, 2003
			<i>Nypa fruticans</i>	Pilantanapak, 2003
			<i>Livistona</i> sp.	Yanna, 2001
			-	Hyde <i>et al.</i> , 2000b
			-	Hyde <i>et al.</i> , 2000b
Maculatifrones K.D. Hyde			<i>Archontophoenix alexandriae</i>	Fröhlich and Hyde, 2000
<i>Maculatifrones aequatoriensis</i>			<i>Laccospadix australasica</i>	Fröhlich and Hyde, 2000
Maculati Palma J. Fröhl. & K.D. Hyde			<i>Licuala ramsayi</i>	Fröhlich and Hyde, 2000
<i>Maculati Palma frondicola</i>			<i>Linospadix monostachya</i>	Fröhlich and Hyde, 2000
			<i>Oraniopsis appendiculata</i>	Fröhlich and Hyde, 2000

Fungus	Family	Order	Host	Note
Manokwaria K.D. Hyde <i>Manokwaria notabilis</i>	Incertae sedis	Xylariales	- <i>Archontophoenix alexandriae</i> <i>Calamus australis</i> <i>Calamus moti</i> <i>Calamus</i> spp.	Hyde <i>et al.</i> , 2000b Fröhlich and Hyde, 2000; Taylor and Hyde, 2003 Fröhlich and Hyde, 2000 Fröhlich and Hyde, 2000 Taylor and Hyde, 2003 Hyde <i>et al.</i> , 2000b
Massariella Speg. <i>Massariella palmarum</i>	Amphisphaeriaceae	Xylariales	<i>Phoenix canariensis</i>	Yanna, 2001
Massarina Sacc. <i>Massarina bipolaris</i> <i>Massarina corticola</i> <i>Massarina frondsiumersa</i> <i>Massarina grandispora</i> <i>Massarina palmetta</i>	Massarinaceae	Pleosporales	<i>Licuala longicalycata</i> <i>Licuala longicalycata</i> <i>Livistona</i> sp. <i>Trachycarpus fortunei</i>	Pinruan <i>et al.</i> , 2007 Pinruan <i>et al.</i> , 2007 Yanna, 2001 Taylor and Hyde, 2003 Hyde <i>et al.</i> , 2000b
Melanochaeta E. Müll., Harr & Sulmont <i>Melanochaeta daemonoropsis</i> <i>Melanochaeta hemipsila</i>	Chaetosphaeriaceae	Chaetosphaeriales	<i>Daemonorops margaritae</i>	Fröhlich and Hyde, 2000 Hyde <i>et al.</i> , 2000b
Meliola Fr. <i>Meliola amphitricha</i> <i>Meliola butleri</i> <i>Meliola livistonae</i> <i>Meliola livistonae</i> var. <i>boninensis</i>	Meliolaceae	Meliolales	<i>Phoenix hanceana</i> var. <i>formosana</i> <i>Phoenix hanceana</i> var. <i>formosana</i> <i>Livistona</i> sp. <i>Livistona chinensis</i> var. <i>boninensis</i> <i>Phoenix reclinata</i>	Yanna, 2001 Yanna, 2001 Yanna, 2001 Yanna, 2001 Yanna, 2001
Metasphaeria Sacc. <i>Metasphaeria maculans</i> <i>Metasphaeria papulosa</i> <i>Metasphaeria pimmarum</i>	Dothioraceae	Dothideales	<i>Arenga pinnata</i> <i>Phoenix dactylifera</i> <i>Phoenix dactylifera</i>	Yanna, 2001 Yanna, 2001 Yanna, 2001

Fungus	Family	Order	Host	Note
Microspeltis Mont.	Micropeltidaceae	Incertae sedis		
<i>Microspeltis malayensis</i>			<i>Salacca wallichiana</i>	Yanna, 2001
<i>Microspeltis zalaccaae</i>			<i>Salacca edulis</i>	Yanna, 2001
Microthyriella Höhn.	Schizothyriaceae	Capnodiales		
<i>Microthyriella</i> sp.			<i>Arenga mindorensis</i>	Yanna, 2001
Microthyrium Desm.	Microthyriaceae	Microthyriales		
<i>Microthyrium</i> spp.			<i>Archontophoenix alexandrae</i>	Taylor and Hyde, 2003
			<i>Cocos nucifera</i>	Taylor and Hyde, 2003
			<i>Eleiodoxa conferta</i>	Pinnoi <i>et al.</i> , 2006
			<i>Licuala longicalycata</i>	Pinruan <i>et al.</i> , 2007
			-	Hyde <i>et al.</i> , 2000b
Mollisia (Fr.) P. Karst	Dermataceae	Helotiales		
<i>Mollisia</i> spp.			<i>Calamus moti</i>	Fröhlich and Hyde, 2000
			<i>Trachycarpus fortunei</i>	Taylor and Hyde, 2003
			-	Hyde <i>et al.</i> , 2000b
Montagnula Berl.	Montagnulaceae	Pleosporales		
<i>Montagnula palmacea</i>			-	Hyde <i>et al.</i> , 2000b
Morenoina Theiss.	Asterinaceae	Capnodiales		
<i>Morenoina palmicola</i>			<i>Calamus</i> spp.	Fröhlich and Hyde, 2000; Taylor and Hyde, 2003
			<i>Daemonorops margaritae</i>	Fröhlich and Hyde, 2000; Taylor and Hyde, 2003
			<i>Licuala ramsayi</i>	Fröhlich and Hyde, 2000
			<i>Licuala</i> spp.	Fröhlich and Hyde, 2000; Taylor and Hyde, 2003
			<i>Livistona chinensis</i>	Fröhlich and Hyde, 2000; Taylor and Hyde, 2003
			-	Hyde <i>et al.</i> , 2000b
			<i>Calamus</i> sp.	Pinnoi <i>et al.</i> , 2009
			<i>Eleiodoxa conferta</i>	Pinnoi <i>et al.</i> , 2006
			<i>Calamus conirostris</i>	Fröhlich and Hyde, 2000
			-	
			<i>Eleiodoxa conferta</i>	Hyde <i>et al.</i> , 2000b
				Pinnoi <i>et al.</i> , 2006
<i>Morenoina</i> sp.	Dacampiaceae	Pleosporales		
Munkovalsaria Aptroot				
<i>Munkovalsaria donacina</i>				
<i>Munkovalsaria</i> sp.				

Fungus	Family	Order	Host	Note
<i>Muyocopron</i> Speg. <i>Muyocopron hongkongensis</i>	Microthyriaceae	Microthyriales	<i>Archontophoenix alexandrae</i>	Taylor and Hyde, 2003 Hyde <i>et al.</i> , 2000b
<i>Mycomicrothelia</i> Keissl. <i>Mycomicrothelia palmicola</i>	Arthopyreniaceae	Pleosporales	<i>Archontophoenix alexandrae</i> <i>Calamus controstris</i> <i>Calamus</i> sp. <i>Daemonorops margaritae</i>	Taylor and Hyde, 2003 Fröhlich and Hyde, 2000 Taylor and Hyde, 2003 Fröhlich and Hyde, 2000; Taylor and Hyde, 2003 Fröhlich and Hyde, 2000
<i>Mycosphaerella</i> Johanson <i>Mycosphaerella freycinetiae</i>	Mycosphaerellaceae	Capnodiales	<i>Licuala</i> sp.	Hyde <i>et al.</i> , 2000b
<i>Myelosperma</i> Syd. & P. Syd. <i>Myelosperma parasitica</i> <i>Myelosperma tumidum</i>	Myelospermataceae	Xylariales	<i>Phoenix recinata</i> <i>Archontophoenix alexandrae</i> <i>Calamus</i> spp. <i>Cocos nutifera</i> <i>Daemonorops margaritae</i> <i>Licuala longicalycata</i> <i>Livistona chinensis</i> <i>Livistona</i> sp.	Yanna, 2001 Taylor and Hyde, 2003 Fröhlich and Hyde, 2000 Fröhlich and Hyde, 2000; Taylor and Hyde, 2003 Fröhlich and Hyde, 2000 Pinruan <i>et al.</i> , 2007 Fröhlich and Hyde, 2000 Fröhlich and Hyde, 2000; Yanna, 2001 Hyde <i>et al.</i> , 2000b
<i>Naemacyclus</i> Fuckel <i>Naemacyclus palmarum</i>	Incertae sedis	Incertae sedis	<i>Arenga pinnata</i>	Yanna, 2001
<i>Nectria</i> (Fr.) Fr. <i>Nectria desmazieii</i> <i>Nectria palmicola</i> <i>Nectria rugulosa</i> <i>Nectria</i> spp. <i>Nectria veuillotiana</i>	Nectriaceae	Hypocreales	<i>Eleiodoxa conferta</i> <i>Mauritia flexuosa</i> <i>Archontophoenix alexandrae</i> <i>Licuala longicalycata</i> <i>Archontophoenix alexandrae</i> <i>Cocos nucifera</i>	Sarapat, 2004 Fröhlich and Hyde, 2000 Taylor and Hyde, 2003 Pinruan <i>et al.</i> , 2007 Taylor and Hyde, 2003 Taylor and Hyde, 2003

Fungus	Family	Order	Host	Note
Nectriopsis Maire <i>Nectriopsis hongkongensis</i> <i>Nectriopsis squamulosa</i>	Bionectriaceae	Hypocreales	- <i>Licuala</i> sp.	Hyde <i>et al.</i> , 2000b Fröhlich and Hyde, 2000
Nemania Gray <i>Nemania eleiodoxae</i>	Xylariaceae	Xylariales	<i>Eleiodoxa conferta</i>	Pinnoi <i>et al.</i> , 2006
Neolinocarpon K.D. Hyde <i>Neolinocarpon cf. nypicola</i> <i>Neolinocarpon eutypoides</i> <i>Neolinocarpon globosicarpum</i>	Incertae sedis	Incertae sedis	<i>Nyssa fruticans</i> <i>Livistona chinensis</i> <i>Nyssa fruticans</i>	Pilantanapak, 2003 Yanna, 2001 Pilantanapak, 2003 Hyde <i>et al.</i> , 2000b
Niesslia Auersw. <i>Niesslia palmicola</i> <i>Niesslia</i> spp.	Niessliaceae	Hypocreales	- <i>Areca catechu</i> <i>Licuala longicalycata</i> <i>Metroxylon sagu</i>	Hyde <i>et al.</i> , 2000b Sarapat, 2004 Pinruan <i>et al.</i> , 2007 Sarapat, 2004
Nipicola K.D. Hyde <i>Nipicola carbonispora</i> <i>Nipicola licualae</i> <i>Nipicola</i> spp.	Incertae sedis	Incertae sedis	- <i>Licuala ramsayi</i> <i>Eleiodoxa conferta</i> <i>Licuala paludosa</i>	Hyde <i>et al.</i> , 2000b Fröhlich and Hyde, 2000 Sarapat, 2004 Sarapat, 2004
Niptera Fr. <i>Niptera</i> sp.	Incertae sedis	Helotiales	-	Hyde <i>et al.</i> , 2000b
Ochronectria Rossman & Samuels <i>Ochronectria calami</i>	Bionectriaceae	Hypocreales	<i>Archontophoenix alexandrae</i> <i>Calamus</i> spp. <i>Cocos nucifera</i>	Taylor and Hyde, 2003 Fröhlich and Hyde, 2000 Fröhlich and Hyde, 2000; Taylor and Hyde, 2003
Ophiobolus Riess <i>Ophiobolus livistonae</i>	Leptosphaeriaceae	Pleosporales	<i>Livistona</i> sp.	Yanna, 2001
Ophioceras Sacc. <i>Ophioceras dolichostomum</i> <i>Ophioceras fusiforme</i>	Magnaporthaceae	Incertae sedis	<i>Archontophoenix alexandrae</i> - <i>Calamus siamensis</i>	Taylor and Hyde, 2003 Hyde <i>et al.</i> , 2000b Sarapat, 2004

Fungus	Family	Order	Host	Note
<i>Ophioceras leptosporum</i>			<i>Licuala paludosa</i>	Sarapat, 2004
<i>Ophioceras soeghi</i>			<i>Archontophoenix alexandrae</i>	Taylor and Hyde, 2003
<i>Ophioceras</i> sp.			<i>Calamus tetradactylus</i>	Fröhlich and Hyde, 2000
<i>Ophionectria</i> Sacc.	Nectriaceae		<i>Calamus waikerii</i>	Fröhlich and Hyde, 2000
<i>Ophionectria</i> sp.			<i>Calamus radialis</i>	Fröhlich and Hyde, 2000
<i>Ophiosstoma</i> Syd. & P. Syd.			<i>Licuala ramsayi</i>	Fröhlich and Hyde, 2000
<i>Ophiosstoma</i> sp.			<i>Licuala longicalycata</i>	Pinruan <i>et al.</i> , 2007
<i>Ophiosstomella</i> Petr.	Ophiosstomataceae		<i>Eleiodoxa conferta</i>	Sarapat, 2004
<i>Orbilia</i> Fr.	Incertae sedis		<i>Pinanga dicksonii</i>	Sarapat, 2004
<i>Orbilia auricolor</i>	Orbiliaceae		<i>Eleiodoxa conferta</i>	Pinnoi <i>et al.</i> , 2006
<i>Orbilia delicatula</i>			<i>Nypa fruticans</i>	Pilantanapak, 2003
<i>Orbilia</i> spp.			<i>Archontophoenix alexandrae</i>	Taylor and Hyde, 2003
			<i>Cocos nucifera</i>	Taylor and Hyde, 2003
			-	Hyde <i>et al.</i> , 2000b
			<i>Livistona chinensis</i>	Yanna, 2001
			var. <i>boninensis</i>	
			<i>Calamus</i> sp.	Pinnoi <i>et al.</i> , 2009
			<i>Eleiodoxa conferta</i>	Pinnoi <i>et al.</i> , 2006
			<i>Licuala longicalycata</i>	Pinruan <i>et al.</i> , 2007
<i>Ornatisspora</i>				
K.D. Hyde, Goh, Joanne E. Taylor, J. Fröhl.	Incertae sedis		<i>Eleiodoxa conferta</i>	Pinnoi <i>et al.</i> , 2006
<i>Ornatisspora</i> sp.			-	Hyde <i>et al.</i> , 2000b
<i>Ornatisspora taiwanensis</i>				
<i>Oxydothis</i> Peuz. & Sacc.	Incertae sedis			
<i>Oxydothis aequalis</i>			<i>Calamus</i> spp.	Fröhlich and Hyde, 2000
<i>Oxydothis alexandrarum</i>			<i>Archontophoenix alexandrae</i>	Taylor and Hyde, 2003
<i>Oxydothis angustispora</i>			<i>Archontophoenix alexandrae</i>	Taylor and Hyde, 2003
			<i>Licuala longicalycata</i>	Pinruan <i>et al.</i> , 2007
			<i>Licuala ramsayi</i>	Fröhlich and Hyde, 2000

Fungus	Family	Order	Host	Note
<i>Oxydothis asiatica</i>			<i>Licuala</i> spp.	Taylor and Hyde, 2003 Hyde <i>et al.</i> , 2000b
<i>Oxydothis asymmetrica</i>			<i>Calamus</i> spp. <i>Daemonorops sparsiflora</i>	Fröhlich and Hyde, 2000 Fröhlich and Hyde, 2000
<i>Oxydothis batuapoiensis</i>			<i>Licuala</i> sp.	Fröhlich and Hyde, 2000
<i>Oxydothis belalongensis</i>			<i>Calamus conirostris</i>	Fröhlich and Hyde, 2000
<i>Oxydothis bruneiensis</i>			<i>Calamus flabellatus</i>	Fröhlich and Hyde, 2000
<i>Oxydothis calami</i>			<i>Daemonorops oxycarpa</i>	Fröhlich and Hyde, 2000
<i>Oxydothis cyrtospora</i>			<i>Licuala</i> spp.	Fröhlich and Hyde, 2000
<i>Oxydothis daemonoropsicola</i>			<i>Calamus conirostris</i> <i>Licuala</i> spp.	Fröhlich and Hyde, 2000 Fröhlich and Hyde, 2000
<i>Oxydothis dispariopicis</i>			<i>Calamus</i> spp.	Fröhlich and Hyde, 2000
<i>Oxydothis elaeicola</i>			<i>Licuala ramsayi</i> <i>Archontophoenix alexandrae</i> <i>Daemonorops margaritae</i>	Fröhlich and Hyde, 2000 Taylor and Hyde, 2003 Fröhlich and Hyde, 2000;
<i>Oxydothis extensa</i>			<i>Daemonorops oxycarpa</i>	Taylor and Hyde, 2003
<i>Oxydothis grisea</i>			<i>Calamus tetradactylus</i>	Fröhlich and Hyde, 2000
<i>Oxydothis frondicola</i>			<i>Calamus walkeri</i>	Fröhlich and Hyde, 2000
<i>Oxydothis gigantean</i>			<i>Elaeis guineensis</i>	Fröhlich and Hyde, 2000
<i>Oxydothis hoehnelii</i>			<i>Licuala ramsayi</i> <i>Arenga engleri</i> <i>Archontophoenix alexandrae</i>	Fröhlich and Hyde, 2000 Yanna, 2001 Taylor and Hyde, 2003
<i>Oxydothis hongkongensis</i>			<i>Licuala longicalycata</i> <i>Licuala ramsayi</i> <i>Archontophoenix alexandrae</i> <i>Arenga</i> sp.	Pinruan <i>et al.</i> , 2007 Taylor and Hyde, 2003 Taylor and Hyde, 2003 Fröhlich and Hyde, 2000; Yanna, 2001
			<i>Calamus walkeri</i>	Fröhlich and Hyde, 2000
			<i>Licuala longicalycata</i>	Fröhlich and Hyde, 2000
			<i>Licuala ramsayi</i>	Pinruan <i>et al.</i> , 2007
			<i>Calamus australis</i>	Fröhlich and Hyde, 2000
			<i>Daemonorops margaritae</i>	Fröhlich and Hyde, 2000

Fungus	Family	Order	Host	Note
<i>Oxydothis ianei</i>			<i>Trachycarpus fortunei</i>	Taylor and Hyde, 2003
<i>Oxydothis licualae</i>			<i>Archontophoenix alexandrae</i> <i>Calamus</i> spp. <i>Jessenia batata</i>	Taylor and Hyde, 2003 Fröhlich and Hyde, 2000; Taylor and Hyde, 2003 Fröhlich and Hyde, 2000; Taylor and Hyde, 2003 Pinruan <i>et al.</i> , 2007
			<i>Licuala longicalycata</i> <i>Licuala ramsayi</i> <i>Licuala spinosa</i> <i>Licuala</i> spp. <i>Livistona chinensis</i>	Fröhlich and Hyde, 2000 Fröhlich and Hyde, 2000 Taylor and Hyde, 2003 Fröhlich and Hyde, 2000; Taylor and Hyde, 2003 Yanna, 2001
<i>Oxydothis licualicola</i>			<i>Livistona</i> sp. <i>Mauritia flexuosa</i>	Fröhlich and Hyde, 2000
<i>Oxydothis livistonae</i>			<i>Licuala</i> spp. <i>Licuala</i> sp. <i>Livistona</i> sp.	Fröhlich and Hyde, 2000 Fröhlich and Hyde, 2000 Fröhlich and Hyde, 2000; Yanna, 2001
<i>Oxydothis livistonica</i>			<i>Calamus thysanolepis</i> <i>Licuala longicalycata</i> <i>Livistona subglobosa</i>	Fröhlich and Hyde, 2000 Pinruan <i>et al.</i> , 2007 Fröhlich and Hyde, 2000; Yanna, 2001
<i>Oxydothis livistonicola</i>			<i>Licuala ramsayi</i> <i>Livistona</i> sp.	Fröhlich and Hyde, 2000 Fröhlich and Hyde, 2000
<i>Oxydothis luteaspora</i>			<i>Calamus australis</i> <i>Calamus</i> sp.	Fröhlich and Hyde, 2000 Fröhlich and Hyde, 2000
<i>Oxydothis maculosa</i>			<i>Calamus moti</i>	Fröhlich and Hyde, 2000
<i>Oxydothis magnicolla</i>			<i>Calamus conirostris</i> <i>Calamus pogonacanthus</i> <i>Licuala</i> spp.	Fröhlich and Hyde, 2000 Fröhlich and Hyde, 2000 Fröhlich and Hyde, 2000
<i>Oxydothis manokwariensis</i>			<i>Calamus tetradactylus</i> <i>Daemonorops margaritae</i> <i>Mauritia flexuosa</i>	Fröhlich and Hyde, 2000 Fröhlich and Hyde, 2000 Fröhlich and Hyde, 2000
<i>Oxydothis mauritiae</i>				Fröhlich and Hyde, 2000

Fungus	Family	Order	Host	Note
<i>Oxydothis rimicola</i>			<i>Daemonorops margaritae</i>	Fröhlich and Hyde, 2000
<i>Oxydothis rubella</i>			<i>Eleiodoxa conferta</i>	Pinnoi <i>et al.</i> , 2006
<i>Oxydothis saltuensis</i>			<i>Calamus pogonacanthus</i>	Fröhlich and Hyde, 2000
			<i>Calamus</i> spp.	Fröhlich and Hyde, 2000
			<i>Archontophoenix alexandrae</i>	Taylor and Hyde, 2003
			<i>Cocos nucifera</i>	Taylor and Hyde, 2003
			<i>Licuala</i> spp.	Fröhlich and Hyde, 2000;
			<i>Livistona</i> sp.	Taylor and Hyde, 2003
				Fröhlich and Hyde, 2000;
				Taylor and Hyde, 2003;
<i>Oxydothis</i> spp.			<i>Areca catechu</i>	Yanna, 2001
			<i>Calamus</i> sp.	Sarapat, 2004
			<i>Eleiodoxa conferta</i>	Pinnoi <i>et al.</i> , 2009
			<i>Licuala paludosa</i>	Sarapat, 2004
			<i>Metroxylon sagu</i>	Sarapat, 2004
			<i>Nypa fruticans</i>	Pilantanapak, 2003
			<i>Pinanga dicksonii</i>	Sarapat, 2004
			<i>Pychosperma marcarthurii</i>	Sarapat, 2004
			<i>Calamus australis</i>	Fröhlich and Hyde, 2000
			<i>Calamus moti</i>	Fröhlich and Hyde, 2000
			<i>Calamus radicalis</i>	Fröhlich and Hyde, 2000
		Microthyriales		
	Microthyriaceae		<i>Oncosperma horridum</i>	Yanna, 2001
<i>Palawania</i> Syd. & P. Syd.		Xylariales		
<i>Palawania grandis</i>			<i>Archontophoenix alexandrae</i>	Taylor and Hyde, 2003,
<i>Palmicola</i> K.D. Hyde	Incertae sedis		-	Hyde <i>et al.</i> , 2000b
<i>Palmicola archontophoenicis</i>			<i>Daemonorops margaritae</i>	Fröhlich and Hyde, 2000
			<i>Archontophoenix alexandrae</i>	Taylor and Hyde, 2003
<i>Palmicola australiensis</i>		Phyllachorales		
<i>Palmicola bipolaris</i>			<i>Oraniopsis appendiculata</i>	Yanna, 2001
<i>Palmomyces</i>	Incertae sedis			
K.D. Hyde, J. Fröhl. & Joanne E. Taylor				
<i>Palmomyces montaneus</i>				

Fungus	Family	Order	Host	Note
<i>Paraphaeosphaeria</i> O.E. Erikss.	Montagnulaceae	Pleosporales		
<i>Paraphaeosphaeria hongkongensis</i>			<i>Livistona chinensis</i>	Fröhlich and Hyde, 2000
<i>Paraphaeosphaeria michotii</i>			<i>Trachycarpus fortunei</i>	Taylor and Hyde, 2003, Hyde <i>et al.</i> , 2000b
<i>Pemphidium</i> Mont.	Incertae sedis	Xylariales		
<i>Pemphidium australiense</i>			<i>Calamus australis</i>	Fröhlich and Hyde, 2000
<i>Pemphidium calamicolum</i>			<i>Calamus australiensis</i>	Fröhlich and Hyde, 2000
<i>Pemphidium rattanicolum</i>			<i>Calamus caryotoides</i>	Fröhlich and Hyde, 2000
<i>Pemphidium zonatum</i>			<i>Calamus moti</i>	Fröhlich and Hyde, 2000
			<i>Jessenia bataua</i>	Fröhlich and Hyde, 2000
			<i>Mauritia flexuosa</i>	Fröhlich and Hyde, 2000, Hyde <i>et al.</i> , 2000b
			-	
			<i>Eleiodoxa conferta</i>	Pinnoi <i>et al.</i> , 2006 Hyde <i>et al.</i> , 2000b
			-	
			<i>Calamus australis</i>	Fröhlich and Hyde, 2000
			<i>Calamus caryotoides</i>	Fröhlich and Hyde, 2000
			<i>Calamus moti</i>	Fröhlich and Hyde, 2000
			<i>Daemonorops margaritae</i>	Fröhlich and Hyde, 2000
			<i>Licuala ramsayi</i>	Fröhlich and Hyde, 2000
			-	Hyde <i>et al.</i> , 2000b
			<i>Licuala longicalycata</i>	Pinruan <i>et al.</i> , 2007
			<i>Livistona subglobosa</i>	Yanna, 2001
			-	
			<i>Livistona chinensis</i>	Fröhlich and Hyde, 2000
			<i>Archontophoenix alexandrae</i>	Taylor and Hyde, 2003
			<i>Trachycarpus fortunei</i>	Taylor and Hyde, 2003
			-	Hyde <i>et al.</i> , 2000b
			<i>Areca catechu</i>	Sarapat, 2004
			<i>Areca triandra</i>	Sarapat, 2004
			<i>Calamus</i> sp.	Pinnoi <i>et al.</i> , 2009
			<i>Eleiodoxa conferta</i>	Sarapat, 2004

Fungus	Family	Order	Host	Note
<i>Phaeosphaeria subalpina</i>	Incertae sedis	Xylariales	<i>Licuala paludosa</i>	Sarapat, 2004
<i>Phaeosphaeria vagans</i>			<i>Metroxylon sagu</i>	Sarapat, 2004
<i>Phomatospora</i> Sacc.	Amphisphaeriaceae	Xylariales	<i>Nypa fruticans</i>	Pilantanapak, 2003
<i>Phomatospora archontophoenicis</i>			<i>Pinanga dicksonii</i>	Sarapat, 2004
<i>Phomatospora berkleyi</i>			<i>Trachycarpus fortunei</i>	Taylor and Hyde, 2003
<i>Phomatospora dinemasporium</i>			<i>Trachycarpus fortunei</i>	Taylor and Hyde, 2003
<i>Phomatospora migrans</i>			<i>Trachycarpus fortunei</i>	Taylor and Hyde, 2003
<i>Phomatospora cf. minutella</i>	Amphisphaeriaceae	Xylariales	<i>Licuala longicalycata</i>	Pinruan <i>et al.</i> , 2007
<i>Phomatospora sp.</i>			<i>Trachycarpus fortunei</i>	Taylor and Hyde, 2003
<i>Phragmodothella</i> Theiss. & Syd.	Incertae sedis	Diaporthales	<i>Arenga pinnata</i>	Taylor and Hyde, 2003
<i>Phragmodothella phoenicis</i>			<i>Trachycarpus fortunei</i>	Taylor and Hyde, 2003
<i>Phruensis Pinruan et al., 2007</i>	Phyllachoraceae	Phyllachorales	<i>Cocos nucifera</i>	Taylor and Hyde, 2003
<i>Phruensis brunneispora</i>			<i>Phoenix hanceana</i>	Yanna, 2001
<i>Phyllachora</i> Nitschke ex Fockel	Hyponectriaceae	Xylariales	var. <i>formosana</i>	Pinruan <i>et al.</i> , 2007
<i>Phyllachora palmicola</i>			<i>Licuala longicalycata</i>	Hyde <i>et al.</i> , 2000b
<i>Physalospora</i> Niesl	Gnomoniaceae	Diaporthales	-	Fröhlich and Hyde, 2000
<i>Physalospora peribambusina</i>			<i>Licuala ramsayi</i>	Fröhlich and Hyde, 2000
<i>Physalospora rhacheophila</i>	Pleomassariaceae	Pleosporales	<i>Licuala</i> sp.	Yanna, 2001
<i>Physalospora rhodina</i>			<i>Arenga tremula</i>	Yanna, 2001
<i>Plagiotstoma</i> Fockel	Pleomassariaceae	Pleosporales	<i>Phoenix canariensis</i>	Taylor and Hyde, 2003
<i>Plagiotstoma devexum</i>			<i>Archontophoenix alexandrae</i>	Taylor and Hyde, 2003
<i>Pleomassaria</i> Speg.	Pleosporaceae	Pleosporales	<i>Phoenix</i> sp.	Yanna, 2001
<i>Pleomassaria phoenicis</i>			<i>Phoenix dactylifera</i>	Yanna, 2001
<i>Pleospora</i> Rabenh. Ex Ces. & De Not.				
<i>Pleospora herbarum</i>				

Fungus	Family	Order	Host	Note
<i>Pleospora principis</i> <i>Pleospora</i> spp.			<i>Phoenix dactylifera</i> <i>Areca catechu</i> <i>Eleiodoxa conferta</i> <i>Metroxylon sagu</i> <i>Nypa fruticans</i>	Yanna, 2001 Sarapat, 2004 Sarapat, 2004 Sarapat, 2004 Pilantanapak, 2003
<i>Podosordaria</i> Ellis & Holw. <i>Podosordaria ingii</i>	Xylariaceae	Xylariales	<i>Phoenix dactylifera</i>	Yanna, 2001
<i>Propoliopsis</i> Rehm <i>Propoliopsis arengae</i>	Stictiaceae	Ostropales	<i>Arenga</i> sp.	Yanna, 2001
<i>Pseudohalonectria</i> Minoura & T. Muroi <i>Pseudohalonectria palmicola</i>	Magnaporthaceae	Incertae sedis	-	Hyde <i>et al.</i> , 2000b
<i>Pseudomassaria</i> Jacz. <i>Pseudomassaria chondrospora</i> <i>Pseudomassaria huwerae</i>	Hyponectriaceae	Xylariales	- - <i>Livistona chinensis</i>	Hyde <i>et al.</i> , 2000b Yanna, 2001
<i>Pulmosphaeria</i> Joanne E. Taylor, K.D. Hyde & E.B. Jones <i>Pulmosphaeria archontophoenicis</i>	Incertae sedis	Xylariales	-	Hyde <i>et al.</i> , 2000b
<i>Rachidicola</i> K.D. Hyde & J. Fröhl. <i>Rachidicola palmae</i>	Incertae sedis	Incertae sedis	<i>Daemonorops margaritae</i> <i>Oncosperma horridum</i>	Fröhlich and Hyde, 2000 Fröhlich and Hyde, 2000 Hyde <i>et al.</i> , 2000b
<i>Rhynchosphaeria</i> (Sacc.) Berl. <i>Rhynchosphaeria phoenicis</i>	Incertae sedis	Incertae sedis	<i>Phoenix sylvestris</i>	Yanna, 2001
<i>Rosellinia</i> De Not. <i>Rosellinia cocoëis</i> <i>Rosellinia corticum</i>	Xylariaceae	Xylariales	<i>Arenga pinnata</i> <i>Arenga tremula</i> <i>Livistona</i> sp. <i>Archontophoenix alexandrae</i> <i>Licuala longiclycata</i>	Yanna, 2001 Yanna, 2001 Yanna, 2001 Taylor and Hyde, 2003 Pinruan <i>et al.</i> , 2007
<i>Roussoella</i> Sacc. <i>Roussoella hysterioides</i>	Didymosphaeriaceae	Pleosporales	-	Hyde <i>et al.</i> , 2000b
<i>Saccardoella</i> Speg. <i>Saccardoella marinospora</i>	Incertae sedis	Incertae sedis	<i>Nypa fruticans</i>	Pilantanapak, 2003

Fungus	Family	Order	Host	Note
Salsuginea K.D. Hyde <i>Salsuginea ramicola</i>	Incertae sedis	Incertae sedis	<i>Nypa fruticans</i>	Pilantanapak, 2003
Savoryella E.B.G. Jones & R.A. Eaton <i>Savoryella lignicola</i> <i>Savoryella paucispora</i>	Incertae sedis	Incertae sedis	<i>Nypa fruticans</i> <i>Nypa fruticans</i>	Pilantanapak, 2003 Pilantanapak, 2003
Schizoparme Shear <i>Schizoparme calamicola</i>	Schizoparmaceae	Diaporthales	<i>Daemonorops margaritae</i>	Fröhlich and Hyde, 2000
Schizothyrium Desm. Serenomyces Petr. <i>Serenomyces mauritiae</i> <i>Serenomyces phoenicis</i> <i>Serenomyces virginiae</i>	Schizothyriaceae Phaeochoraceae	Capnodiales Phyllachorales	- <i>Phoenix dactylifera</i> <i>Phoenix dactylifera</i>	Hyde <i>et al.</i> , 2000b Yanna, 2001 Yanna, 2001
Seynesia Sacc. <i>Seynesia nobilis</i>	Incertae sedis	Xylariales	<i>Arenga</i> sp. <i>Elaeis guineensis</i> <i>Euterpe</i> sp. <i>Gulubia costata</i> <i>Livistona chinensis</i> <i>Livistona subglobosa</i> <i>Oenocarpus bacaba</i>	Fröhlich and Hyde, 2000 Fröhlich and Hyde, 2000 Fröhlich and Hyde, 2000 Fröhlich and Hyde, 2000 Fröhlich and Hyde, 2000 Fröhlich and Hyde, 2000 Fröhlich and Hyde, 2000 Hyde <i>et al.</i> , 2000b
Seynesiella G. Arnaud <i>Seynesiella</i> spp.	Microthyriaceae	Microthyriales	- <i>Licuala paludosa</i> <i>Metroxylon sagu</i>	Sarapat, 2004 Sarapat, 2004
Sphaerodothis (Sacc. & P. Syd.) Shear <i>Sphaerodothis arengae</i>	Phyllachoraceae	Phyllachorales	<i>Arenga obtusifolia</i> <i>Arenga saccharifera</i>	Yanna, 2001 Yanna, 2001
Sphaerulina Sacc. <i>Sphaerulina phoenicis</i>	Mycosphaerellaceae	Capnodiales	<i>Phoenix hanceana</i> var. <i>formosana</i>	Yanna, 2001
Sorokina Sacc. <i>Sorokina frondicola</i>	Incertae sedis	Helotiales	<i>Archontophoenix alexandrae</i>	Taylor and Hyde, 2003
Sorokinella J. Fröhl. & K.D. Hyde	Incertae sedis	Helotiales		

Fungus	Family	Order	Host	Note
<i>Sorokinella appendicospora</i>			<i>Archontophoenix alexandrae</i>	Taylor and Hyde, 2003
<i>Sorokinella calamae</i>			<i>Calamus moti</i>	Fröhlich and Hyde, 2000; Taylor and Hyde, 2003
<i>Sorokinella sp.</i>			<i>Livistona chinensis</i>	Fröhlich and Hyde, 2000
<i>Sporormiella</i> Ellis & Everh.	Sporormiaceae		<i>Trachycarpus fortunei</i>	Taylor and Hyde, 2003
<i>Sporormiella minimoides</i>			<i>Calamus moti</i>	Fröhlich and Hyde, 2000
<i>Steganopycnis</i> Syd. & P. Syd.	Incertae sedis		<i>Cocos nucifera</i>	Taylor and Hyde, 2003
<i>Steganopycnis oncospermatidis</i>			<i>Licuala</i> sp.	Fröhlich and Hyde, 2000
<i>Stictis</i> Pers.	Stictidaceae	Pleosporales	<i>Trachycarpus fortunei</i>	Taylor and Hyde, 2003
<i>Stictis ecclesiensis</i>			-	Hyde <i>et al.</i> , 2000b
<i>Stictis stellata</i>		Xylariales	<i>Oncosperma horridum</i>	Yanna, 2001
<i>Stilbocrea</i> Pat.	Bionectriaceae	Ostropales	<i>Trachycarpus fortunei</i>	Taylor and Hyde, 2003
<i>Stilbocrea gracilipes</i>			-	Hyde <i>et al.</i> , 2000b
<i>Stilbohypoxylon</i> Henn.	Xylariaceae	Hypocreales	<i>Cocos nucifera</i>	Taylor and Hyde, 2003
<i>Stilbohypoxylon moelleri</i>		Xylariales	<i>Trachycarpus fortunei</i>	Taylor and Hyde, 2003
<i>Stilbohypoxylon quisquiliarum</i>			<i>Cocos nucifera</i>	Taylor and Hyde, 2003
			<i>Astrocaryum</i> sp.	Fröhlich and Hyde, 2000
			<i>Elaeis</i> sp.	Fröhlich and Hyde, 2000
			<i>Eleiodoxa conferta</i>	Pinnoi <i>et al.</i> , 2006
			<i>Euterpe</i> sp.	Fröhlich and Hyde, 2000
			<i>Irartea</i> sp.	Fröhlich and Hyde, 2000
			<i>Jessenia bataua</i>	Fröhlich and Hyde, 2000
			<i>Licuala longicaycata</i>	Pinruan <i>et al.</i> , 2007
			<i>Mauritia flexuosa</i>	Fröhlich and Hyde, 2000
			<i>Oraniopsis appendiculata</i>	Fröhlich and Hyde, 2000
			<i>Phytelephas</i> sp.	Fröhlich and Hyde, 2000
			<i>Prestoea Montana</i>	Fröhlich and Hyde, 2000
			<i>Calamus australis</i>	Fröhlich and Hyde, 2000

Fungus	Family	Order	Host	Note
Strossmayeria Schulzer	Helotiaceae	Helotiales	-	Hyde <i>et al.</i> , 2000b
<i>Strossmayeria australiensis</i>				
<i>Strossmayeria bakeriana</i>			<i>Calamus moti</i>	Fröhlich and Hyde, 2000
<i>Strossmayeria calamicola</i>			-	Hyde <i>et al.</i> , 2000b
Submersisphaeria K.D. Hyde	Annulatascaceae	Incertae sedis	<i>Archontophoenix alexandreae</i>	Taylor and Hyde, 2003
<i>Submersisphaeria aquatica</i>			<i>Calamus moti</i>	Fröhlich and Hyde, 2000
<i>Submersisphaeria palmae</i>				
<i>Submersisphaeria rattanicola</i>			<i>Licuala longicalycata</i>	Pinruan <i>et al.</i> , 2007
Terriera B. Erikss	Rhytismaceae	Rhytismatales	<i>Eleiodoxa conferta</i>	Pinnoi <i>et al.</i> , 2006
<i>Terriera breve</i>			<i>Licuala longicalycata</i>	Pinruan <i>et al.</i> , 2007
<i>Terriera cf. breve</i>			<i>Calamus radicalis</i>	Fröhlich and Hyde, 2000
<i>Terriera pandani</i>			<i>Archontophoenix alexandreae</i>	Taylor and Hyde, 2003
Thailandiomyces	Incertae sedis	Diaporthales	<i>Cocos nucifera</i>	Taylor and Hyde, 2003
Pinruan <i>et al.</i>, 2007, Sakay., K.D. Hyde & E.B.G. Jones			<i>Trachycarpus fortunei</i>	Taylor and Hyde, 2003
<i>Thailandiomyces bisetulosus</i>			-	Hyde <i>et al.</i> , 2000b
Thyridaria Sacc.	Incertae sedis	Incertae sedis	<i>Calamus conirostris</i>	Fröhlich and Hyde, 2000
<i>Thyridaria rubronotata</i>				
<i>Thyridaria sambucina</i>			<i>Licuala longicalycata</i>	Pinruan <i>et al.</i> , 2007
Thyridium Nitschke	Thyridiaceae	Incertae sedis	<i>Trachycarpus fortunei</i>	Taylor and Hyde, 2003
<i>Thyridium chrysomallum</i>			<i>Archontophoenix alexandreae</i>	Taylor and Hyde, 2003
Tirisporella	Incertae sedis	Incertae sedis	<i>Trachycarpus fortunei</i>	Taylor and Hyde, 2003
E.B.G. Jones, K.D. Hyde & Alias			<i>Metroxylon sagu</i>	Sarapat, 2004
<i>Tirisporella beccariana</i>			-	Hyde <i>et al.</i> , 2000b
<i>Tirisporella cf. beccariana</i>			<i>Trachycarpus fortunei</i>	Taylor and Hyde, 2003
			-	Hyde <i>et al.</i> , 2000b
			-	Hyde <i>et al.</i> , 2000b
			<i>Nypa fruticans</i>	Pilantanapak, 2003

Fungus	Family	Order	Host	Note
Torpedospori Meyers	Incertae sedis	Incertae sedis		
<i>Torpedospora cf. radiata</i>			<i>Nypa fruticans</i>	Pilantanapak, 2003
Trematosphaeria Fockel	Pleomassariaceae	Pleosporales	<i>Phoenix canariensis</i>	Yanna, 2001
<i>Trematosphaeria canariensis</i>			<i>Nypa fruticans</i>	Pilantanapak, 2003
<i>Trematosphaeria lineolatispora</i>			<i>Nypa fruticans</i>	Pilantanapak, 2003
<i>Trematosphaeria mangrovei</i>				
Tribulatia	Incertae sedis	Incertae sedis		
Joanne E. Taylor, K.D. Hyde & E.B.G. Jones			<i>Archontophoenix alexandrae</i>	Taylor and Hyde, 2003
<i>Tribulatia appendicospora</i>				
Trichosphaeria Fockel	Trichosphaeriaceae	Trichosphaeriales	<i>Arenga</i> sp.	Yanna, 2001
<i>Trichosphaeria regulinoides</i>				
Tubeufia Penz. & Sacc.	Tubeufiaceae	Pleosporales	<i>Calamus comptus</i>	Fröhlich and Hyde, 2000
<i>Tubeufia cerea</i>			<i>Eleiodoxa conferta</i>	Pinnoi <i>et al.</i> , 2006
<i>Tubeufia claspisphaeria</i>			<i>Licuala longicalycata</i>	Pinruan <i>et al.</i> , 2007
<i>Tubeufia clintonii</i>			<i>Archontophoenix alexandrae</i>	Taylor and Hyde, 2003
<i>Tubeufia cylindrothecia</i>			<i>Cocos nucifera</i>	Taylor and Hyde, 2003
<i>Tubeufia nematospora</i>			<i>Mauritia flexuosa</i>	Fröhlich and Hyde, 2000
<i>Tubeufia paludosa</i>				Hyde <i>et al.</i> , 2000b
<i>Tubeufia cf. paludosa</i>			<i>Calamus pogonacanthus</i>	Fröhlich and Hyde, 2000
<i>Tubeufia pezizula</i>			<i>Cocos nucifera</i>	Taylor and Hyde, 2003
<i>Tubeufia scopula</i>			<i>Archontophoenix alexandrae</i>	Taylor and Hyde, 2003
<i>Tubeufia</i> sp.			<i>Nypa fruticans</i>	Pilantanapak, 2003
Uleodothis Theiss. & Syd.	Venturiaceae	Pleosporales	<i>Phoenix</i> sp.	Yanna, 2001
<i>Uleodothis coonoorensis</i>				
Unisetosphaeria	Trichosphaeriaceae	Trichosphaeriales		
Pinnoi <i>et al.</i> , 2006, E.B.G. Jones, McKenzie & K.D. Hyde			<i>Eleiodoxa conferta</i>	Pinnoi <i>et al.</i> , 2006
<i>Unisetosphaeria penguinooides</i>			<i>Trachycarpus fortunei</i>	Taylor and Hyde, 2003
Valsa Fr.	Valsaceae	Diaporthales	<i>Cocos nucifera</i>	Taylor and Hyde, 2003
<i>Valsa cf. ceratosperma</i>				
<i>Valsa chlorina</i>				

Fungus	Family	Order	Host	Note
<i>Valsa cocoes</i>			-	Hyde <i>et al.</i> , 2000b
Verruculina Kohlm. & Volkrm.-Kohlm.	Testudinaceae	Pleosporales	<i>Cocos nucifera</i>	Fröhlich and Hyde, 2000
<i>Verruculina enalita</i>			<i>Daemonorops margaritae</i>	Fröhlich and Hyde, 2000
Vibrissea Fr.	Vibrisseaceae	Helotiales	<i>Nypa fruticans</i>	Pilantanapak, 2003
<i>Vibrissea nypicola</i>			<i>Nypa fruticans</i>	Pilantanapak, 2003
Xylaria Hill ex Schrank	Xylariaceae	Xylariales	<i>Calamus moti</i>	Fröhlich and Hyde, 2000
<i>Xylaria astrosphaerica</i>			<i>Arenga tremula</i>	Yanna, 2001
<i>Xylaria juruensis</i>			-	Hyde <i>et al.</i> , 2000b
<i>Xylaria queenlandica</i>			<i>Archontophoenix alexandrae</i>	Taylor and Hyde, 2003
Zignoëlla Sacc.	Chaetosphaeriaceae	Chaetosphaeriales	<i>Arenga tremula</i>	Yanna, 2001
<i>Zignoëlla arengae</i>				
Zopfiella G. Winter	Lasiophaeriaceae	Sordariales	<i>Nypa fruticans</i>	Pilantanapak, 2003
<i>Zopfiella latipes</i>			<i>Nypa fruticans</i>	Pilantanapak, 2003
<i>Zopfiella</i> sp.			<i>Phoenix dactylifera</i>	Yanna, 2001
Zukalia Sacc.	Chaetothyriaceae	Chaetothyriales		
<i>Zukalia stuhlmanniana</i>				
Basidiomyceete genera				
<i>Agaricostilbum</i> J.E. Wright	Agaricosfilbaceae	Agaricosfilbales	<i>Cocos nucifera</i>	Taylor and Hyde, 2003
<i>Agaricostilbum pulcherrimum</i>			<i>Phoenix</i> sp.	Taylor and Hyde, 2003
<i>Antrodia</i> P. Karst.	Fomitopsidaceae	Polyporales	<i>Phoenix dactylifera</i>	Yanna, 2001
<i>Antrodia albida</i>			<i>Cocos nucifera</i>	Choeyklin, 2009
<i>Antrodia gossypium</i>				

Fungus	Family	Order	Host	Note
Armillaria (Fr.) Staude	Physalariaceae	Agaricales		
<i>Armillaria mellea</i>			<i>Phoenix canariensis</i>	Yanna, 2001
<i>Armillaria tabescens</i>			<i>Phoenix canariensis</i>	Yanna, 2001
			<i>Phoenix dactylifera</i>	Yanna, 2001
			<i>Phoenix reclinata</i>	Yanna, 2001
Asterostroma Massee	Lachnocladiaceae	Russulales	<i>Arenga pinnata</i>	Choeyklin, 2009
<i>Asterostroma andinum</i>				
Atractogloea Oberw. & Bandoni	Atractogloaceae	Atractiellales		
<i>Atractogloea stillata</i>			<i>Phoenix canariensis</i>	Yanna, 2001
Cellypha Donk	Tricholomataceae	Agaricales	<i>Phoenix dactylifera</i>	Yanna, 2001
<i>Cellypha algeriensis</i>				
Ceraceomyces Jülich	Amylocorticaceae	Boletales		
<i>Ceraceomyces serpens</i>			<i>Elaeis guineensis</i>	Choeyklin, 2009
Ceriporiopsis Domański	Hapalopilaceae	Polyporales	<i>Areca catechu</i>	Choeyklin, 2009
<i>Ceriporiopsis cf. balaenae</i>				
Clitocybe (Fr.) Staude	Tricholomataceae	Agaricales	<i>Phoenix canariensis</i>	Yanna, 2001
<i>Clitocybe tabescens</i>				
Cyathus Haller	Nidulariaceae	Agaricales		
<i>Cyathus montagnei</i>			<i>Calamus sp.</i>	Choeyklin, 2009
Cymatoderma Jungh.	Podoscyphaceae	Polyporales	<i>Calamus sp.</i>	Choeyklin, 2009
<i>Cymatoderma dendriticum</i>				
Cyphella Fr.	Cyphellaceae	Agaricales	<i>Arenga pinnata</i>	Yanna, 2001
<i>Cyphella fulvodisca</i>				
Daedalea Pers.	Fomitopsidaceae	Polyporales		
<i>Daedalea flavida</i>			<i>Elaeis guineensis</i>	Choeyklin, 2009
Earliella Murrill	Polyporaceae	Polyporales	-	Choeyklin, 2009
<i>Earliella scabrosa</i>				
Epithele (Pat.) Pat.	Polyporaceae	Polyporales	<i>Phoenix canariensis</i>	Yanna, 2001
<i>Epithele canariensis</i>			<i>Phoenix canariensis</i>	Yanna, 2001
<i>Epithele capitata</i>			<i>Elaeis guineensis</i>	Choeyklin, 2009
<i>Epithele macaranga</i>				
Filoboletus Henn.	Mycenaceae	Agaricales	<i>Arenga pinnata</i>	Choeyklin, 2009
<i>Filoboletus manipularis</i>				

Fungus	Family	Order	Host	Note
Flabellophora G. Cunn.	Polyporaceae	Polyporales	<i>Oncosperma filamentosa</i>	Yanna, 2001
<i>Flabellophora velutinosa</i>				
Fomes (Fr.) Fr.	Polyporaceae	Polyporales	<i>Livistona cochinchinensis</i>	Yanna, 2001
<i>Fomes lignosus</i>				
Ganoderma P. Karst	Ganodermataceae	Polyporales	<i>Livistona rotundifolia</i>	Yanna, 2001
<i>Ganoderma applanatum</i> var. <i>philippinense</i>			<i>Livistona</i> sp.	Yanna, 2001
<i>Ganoderma australe</i>			<i>Cocos nucifera</i>	Choeyklin, 2009
<i>Ganoderma orbiforme</i>			<i>Elaeis guineensis</i>	Choeyklin, 2009
<i>Ganoderma pseudoferreum</i>			<i>Elaeis guineensis</i>	Choeyklin, 2009
<i>Ganoderma williamsianum</i>			<i>Arenga pinnata</i>	Yanna, 2001
Grammothele Berk. & M.A. Curtis	Polyporaceae	Polyporales	<i>Arenga pinnata</i>	Yanna, 2001
<i>Grammothele fuligo</i>			<i>Calamus</i> sp.	Choeyklin, 2009
			<i>Elaeis guineensis</i>	Choeyklin, 2009
Graphiola Poit.	Graphiolaceae	Exobasidiales	<i>Phoenix sylvestris</i>	Yanna, 2001
<i>Graphiola applanata</i>			<i>Arenga ambong</i>	Yanna, 2001
<i>Graphiola arengae</i>			<i>Arenga ambong</i>	Yanna, 2001
<i>Graphiola cylindrospora</i>			<i>Livistona chinensis</i>	Yanna, 2001
			<i>Livistona muelleri</i>	Yanna, 2001
<i>Graphiola phoenicis</i>			<i>Livistona</i> sp.	Yanna, 2001
			<i>Arenga pinnata</i>	Yanna, 2001
			<i>Livistona alfredii</i>	Yanna, 2001
			<i>Livistona chinensis</i>	Yanna, 2001
			<i>Phoenix canariensis</i>	Yanna, 2001
			<i>Phoenix hanceana</i>	Yanna, 2001
			<i>Phoenix hanceana</i> var. <i>formosana</i>	Yanna, 2001
			<i>Phoenix dactylifera</i>	Yanna, 2001
			<i>Phoenix paludosa</i>	Yanna, 2001
			<i>Phoenix reclinata</i>	Yanna, 2001
			<i>Phoenix roebelenii</i>	Yanna, 2001
			<i>Phoenix sylvestris</i>	Yanna, 2001

Fungus	Family	Order	Host	Note
<i>Graphiola</i> sp.			<i>Phoenix</i> spp.	Yanna, 2001
<i>Hyalopycnis Höhn.</i>	Heterogastridiaceae	Heterogastridiales	<i>Phoenix dactylifera</i>	Yanna, 2001
<i>Hyalopycnis blepharistoma</i>				
<i>Hyphoderma Wallr.</i>	Meruliaceae	Polyporales	<i>Archontophoenix alexandrae</i>	Taylor and Hyde, 2003
<i>Hyphoderma medioburienae</i>				
<i>Hyphoderma pubera</i> var. <i>dactylifera</i>				
<i>Hyphoderma sambuci</i>				
<i>Hyphodontia J. Erikss</i>	Schizoporaceae	Hymenochaetales	<i>Phoenix canariensis</i>	Yanna, 2001
<i>Hyphodontia abieticola</i>			<i>Phoenix dactylifera</i>	Yanna, 2001
<i>Hyphodontia gossypina</i>			<i>Phoenix dactylifera</i>	Yanna, 2001
<i>Hyphodontia sambuci</i>				
<i>Lentinus Fr.</i>	Polyporaceae	Polyporales	<i>Elaeis guineensis</i>	Choeyklin, 2009
<i>Lentinus squarrosulus</i>			<i>Elaeis guineensis</i>	Choeyklin, 2009
<i>Lycoperdon Pers.</i>	Agaricaceae	Agaricales	<i>Nypa fructicans</i>	Choeyklin, 2009
<i>Lycoperdon polymorphum</i>			<i>Phoenix canariensis</i>	Choeyklin, 2009
<i>Lycoperdon pusillum</i>			<i>Phoenix dactylifera</i>	Yanna, 2001
<i>Marasmius Fr.</i>	Marasmiaceae	Agaricales	<i>Phoenix dactylifera</i>	Yanna, 2001
<i>Marasmius candidus</i>				
<i>Mycocalia J.T. Palmer</i>	Nidulariaceae	Agaricales	<i>Elaeis guineensis</i>	Choeyklin, 2009
<i>Mycocalia denudata</i>				
<i>Oliveonia Donk</i>	Incertae sedis	Auriculariales	<i>Arenga pinnata</i>	Yanna, 2001
<i>Oliveonia pauxilla</i>				
<i>Omphalia (Pers.) Gray</i>	Tricholomataceae	Agaricales	<i>Phoenix dactylifera</i>	Yanna, 2001
<i>Omphalia pigmentata</i>				
<i>Omphalia tralucida</i>			<i>Phoenix dactylifera</i>	Yanna, 2001
<i>Oxyporus (Bourdot & Galzin) Donk</i>	Incertae sedis	Incertae sedis	<i>Elaeis guineensis</i>	Choeyklin, 2009
<i>Oxyporus cervinogilvus</i>				
<i>Panellus P. Karst</i>	Mycenaceae	Agaricales	<i>Arenga pinnata</i>	Choeyklin, 2009
<i>Panellus pusillus</i>			<i>Calamus</i> sp.	Choeyklin, 2009

Fungus	Family	Order	Host	Note
Peniophora Cooke	Peniophoraceae	Russulales	<i>Oncosperma</i> sp.	Choeyklin, 2009
<i>Peniophora lycii</i>				Yanna, 2001
<i>Peniophora trigonosperma</i>			<i>Phoenix canariensis</i>	Choeyklin, 2009
Phallus Junius ex L.	Phallaceae	Phallales	<i>Calamus</i> sp.	
<i>Phallus indusiatus</i>				Choeyklin, 2009
Phanerochaete P Karst.	Phanerochaetaceae	Polyporales	<i>Elaeis guineensis</i>	
<i>Phanerochaete crenea</i>			<i>Phoenix dactylifera</i>	Yanna, 2001
Phellinus QuéL.	Hymenochaetaceae	Hymenochaetales	<i>Elaeis guineensis</i>	Choeyklin, 2009
<i>Phellinus noxius</i>				
Phlebia Fr.	Meruliaceae	Polyporales	<i>Phoenix canariensis</i>	Yanna, 2001
<i>Phlebia canadensis</i>				
Pleurotus (Fr.) P. Kumm.	Pleurotaceae	Agaricales		
<i>Pleurotus flabellatus</i>			<i>Polyporus lucidus</i>	
Podoscypha Pat.	Meruliaceae	Polyporales	<i>Elaeis guineensis</i>	Choeyklin, 2009
<i>Podoscypha fulvovitens</i>				
Polyporus P. Micheli ex Adans.	Polyporaceae	Polyporales	<i>Elaeis guineensis</i>	Choeyklin, 2009
<i>Polyporus arcularius</i>			<i>Phoenix canariensis</i>	Yanna, 2001
<i>Polyporus lucidus</i>			<i>Phoenix reclinata</i>	Yanna, 2001
			<i>Livistona rotundifolia</i>	Yanna, 2001
			<i>Arenga pinnata</i>	Yanna, 2001
Poria Pers.	Polyporaceae	Polyporales	<i>Phoenix dactylifera</i>	Yanna, 2001
<i>Poria ambigua</i>			<i>Phoenix</i> sp.	Yanna, 2001
<i>Poria otakou</i>			<i>Livistona rotundifolia</i>	Yanna, 2001
<i>Poria ravenalae</i>			<i>Phoenix dactylifera</i>	Yanna, 2001
			<i>Phoenix reclinata</i>	Yanna, 2001
<i>Poria versipora</i>			<i>Phoenix dactylifera</i>	Yanna, 2001
<i>Poria xylostromatoides</i>			<i>Phoenix canariensis</i>	Yanna, 2001
			<i>Phoenix dactylifera</i>	Yanna, 2001
Punctularia Pat.	Corticiaceae	Corticiales	<i>Cocos nucifera</i>	Choeyklin, 2009
<i>Punctularia strigosozonata</i>				

Fungus	Family	Order	Host	Note
<i>Pycnoporus P. Karst.</i> <i>Pycnoporus sanguineus</i>	Polyporaceae	Polyporales	<i>Cocos nucifera</i> <i>Elaeis guineensis</i> <i>Livistona</i> sp.	Choeyklin, 2009 Choeyklin, 2009 Yanna, 2001
<i>Rigidoporus Murrill</i> <i>Rigidoporus cf. lineatus</i> <i>Rigidoporus microporus</i>	Meripilaceae	Polyporales	-	Choeyklin, 2009 Choeyklin, 2009
<i>Schizophyllum Fr.</i> <i>Schizophyllum commune</i>	Schizophyllaceae	Agaricales	<i>Arenga pinnata</i> <i>Elaeis guineensis</i> <i>Phoenix dactylifera</i> <i>Phoenix reclinata</i>	Yanna, 2001 Choeyklin, 2009 Yanna, 2001 Yanna, 2001
<i>Schizopora Velen.</i> <i>Schizopora apacheriensis</i>	Schizoporaceae	Hymenochaetales	<i>Phoenix dactylifera</i>	Yanna, 2001
<i>Sistotrema Fr.</i> <i>Sistotrema brinkmannii</i>	Hydnaceae	Cantharellales	<i>Phoenix dactylifera</i>	Yanna, 2001
<i>Sphaerobolus Tode</i> <i>Sphaerobolus minimus</i>	Geastraceae	Geastrales	<i>Arenga</i> sp.	Yanna, 2001
<i>Stylinia Syd.</i> <i>Stylinia disticha</i>	Graphiolaceae	Exobasidiales	<i>Livistona chinensis</i>	Yanna, 2001
<i>Tomophagus Murrill</i> <i>Tomophagus colossus</i>	Ganodermaceae	Polyporales	<i>Cocos nucifera</i>	Choeyklin, 2009
<i>Trametes Fr.</i> <i>Trametes lactinea</i> <i>Trametes mimites</i> <i>Trametes pocas</i>	Polyporaceae	Polyporales	<i>Cocos nucifera</i> <i>Elaeis guineensis</i> <i>Elaeis guineensis</i>	Choeyklin, 2009 Choeyklin, 2009 Choeyklin, 2009
<i>Trechispora P. Karst.</i> <i>Trechispora farinacea</i>	Hydnodontaceae	Trechisporales	<i>Phoenix canariensis</i> <i>Phoenix dactylifera</i>	Yanna, 2001 Yanna, 2001
<i>Trichaptum Murrill</i> <i>Trichaptum byssogenum</i>	Polyporaceae	Polyporales	<i>Cocos nucifera</i>	Choeyklin, 2009
<i>Tubulicium Oberw.</i> <i>Tubulicium capitatum</i>	Hydnodontaceae	Trechisporales	<i>Phoenix canariensis</i>	Yanna, 2001

Fungus	Family	Order	Host	Note
<i>Tyromyces</i> P. Karst. <i>Tyromyces ovisporus</i>	Polyporaceae	Polyporales	<i>Oncosperma horridum</i>	Yanna, 2001
<u>Anamorphic fungi genera</u>				
<i>Acarocybellina</i> Subram. <i>Acarocybellina arengae</i>			<i>Arenga engleri</i>	Yanna, 2001
<i>Acremonium</i> Link <i>Acremonium</i> spp.			<i>Archontophoenix alexandrae</i> <i>Cocos nucifera</i> <i>Trachycarpus fortunei</i>	Taylor and Hyde, 2003 Taylor and Hyde, 2003 Taylor and Hyde, 2003
<i>Acrodictys</i> M.B. Ellis <i>Acrodictys erecta</i>			<i>Areca triandra</i> <i>Calamus</i> sp. <i>Eleiodoxa conferta</i> <i>Licuala paludosa</i> <i>Metroxylon sagu</i> <i>Pychosperma marcarthurii</i>	Sarapat, 2004 Pinnoi <i>et al.</i> , 2009 Sarapat, 2004 Sarapat, 2004 Sarapat, 2004 Sarapat, 2004 Yanna, 2001
<i>Acrodictys globulosa</i> <i>Acrodictys</i> sp.			<i>Arenga engleri</i> <i>Calamus siamensis</i> <i>Caryota urens</i> <i>Korthalsia lacinosa</i> <i>Metroxylon sagu</i>	Sarapat, 2004 Sarapat, 2004 Sarapat, 2004 Sarapat, 2004 Sarapat, 2004
<i>Acrocalymma</i> Alcorn & J.A.G. Irwin <i>Acrocalymma medicaginis</i>			<i>Eleiodoxa conferta</i> <i>Trachycarpus fortunei</i>	Pinnoi <i>et al.</i> , 2006 Taylor and Hyde, 2003
<i>Alternaria</i> Nees <i>Alternaria alternata</i>			<i>Trachycarpus fortunei</i> <i>Phoenix dactylifera</i> <i>Phoenix dactylifera</i> <i>Phoenix canariensis</i> <i>Phoenix dactylifera</i>	Taylor and Hyde, 2003 Yanna, 2001 Yanna, 2001 Yanna, 2001 Yanna, 2001
<i>Alternaria citri</i> <i>Alternaria</i> spp.				

Fungus	Family	Order	Host	Note
<i>Alternaria stemphylioides</i>			<i>Phoenix reclinata</i>	Yanna, 2001
Amarenographium O.E. Erikss			<i>Phoenix roebelenii</i>	Yanna, 2001
<i>Amarenographium sinense</i>			<i>Trachycarpus fortunei</i>	Taylor and Hyde, 2003
Annelophora S. Hughes			<i>Phoenix dactylifera</i>	Yanna, 2001
<i>Annelophora phoenicis</i>			<i>Trachycarpus fortunei</i>	Taylor and Hyde, 2003
Antipodium Piroz.			<i>Phoenix canariensis</i>	Yanna, 2001
<i>Antipodium arecae</i>			<i>Phoenix sp.</i>	Yanna, 2001
Arthrinium Kenze			<i>Areca catechu</i>	Taylor and Hyde, 2003
<i>Arthrinium arundinis</i>			<i>Cocos nucifera</i>	Taylor and Hyde, 2003
<i>Arthrinium phaeospermum</i>			<i>Licuala longicalycata</i>	Pinruan <i>et al.</i> , 2007
Arthrobotrys Corda			<i>Trachycarpus fortunei</i>	Taylor and Hyde, 2003
<i>Arthrobotrys dendroides</i>			<i>Trachycarpus fortunei</i>	Taylor and Hyde, 2003
<i>Arthrobotrys oligospora</i>			<i>Trachycarpus fortunei</i>	Taylor and Hyde, 2003
<i>Arthrobotrys sp.</i>				
Ascochyta Lib.			<i>Archontophoenix alexandrae</i>	Taylor and Hyde, 2003
<i>Ascochyta caryotina</i>			<i>Licuala longicalycata</i>	Pinruan <i>et al.</i> , 2007
			<i>Eleiodoxa conferta</i>	Pinnoi <i>et al.</i> , 2006
			<i>Caryota urens</i>	Taylor and Hyde, 2003
			<i>Trachycarpus fortunei</i>	Taylor and Hyde, 2003
<i>Ascochyta palmicola</i>			<i>Raphia sp.</i>	Taylor and Hyde, 2003
<i>Ascochyta papyricola</i>			<i>Trachycarpus fortunei</i>	Taylor and Hyde, 2003
<i>Ascochyta socialis</i>			<i>Trachycarpus fortunei</i>	Taylor and Hyde, 2003
Aspergillus P. Micheli ex Link			<i>Trachycarpus fortunei</i>	Taylor and Hyde, 2003
<i>Aspergillus flavus</i>				
<i>Aspergillus fumigatus</i>				
<i>Aspergillus niger</i>				
<i>Aspergillus sp.</i>			<i>Phoenix dactylifera</i>	Taylor and Hyde, 2003
			<i>Phoenix dactylifera</i>	Yanna, 2001
			<i>Phoenix dactylifera</i>	Yanna, 2001
			<i>Licuala longicalycata</i>	Pinruan <i>et al.</i> , 2007

Fungus	Family	Order	Host	Note
Aureobasidium Viala & G. Boyer				
<i>Aureobasidium pullulans</i>			<i>Trachycarpus fortunei</i>	Taylor and Hyde, 2003
<i>Aureobasidium</i> sp.			<i>Phoenix dactylifera</i>	Yanna, 2001
Backrodium Cooke				
<i>Backrodium longiosporum</i>			<i>Areca catechu</i>	Sarapat, 2004
<i>Backrodium</i> sp.			<i>Licuala longicalycata</i>	Pinruan <i>et al.</i> , 2007
Beltrania Penz.				
<i>Beltrania malaiensis</i>			<i>Eleiodoxa conferta</i>	Sarapat, 2004
<i>Beltrania rhombica</i>			<i>Areca catechu</i>	Sarapat, 2004
			<i>Caryota urens</i>	Sarapat, 2004
			<i>Metroxylon sagu</i>	Sarapat, 2004
Berkleasium Zobel				
<i>Berkleasium concinnum</i>			<i>Metroxylon sagu</i>	Sarapat, 2004
<i>Berkleasium crunisia</i>			<i>Pychosperma marcarthurii</i>	Sarapat, 2004
<i>Berkleasium micronesicum</i>			<i>Calamus</i> sp.	Pinnoi <i>et al.</i> , 2009
<i>Berkleasium sinense</i>			<i>Eleiodoxa conferta</i>	Pinnoi <i>et al.</i> , 2006
<i>Berkleasium</i> sp.			<i>Calamus</i> sp.	Pinnoi <i>et al.</i> , 2009
<i>Berkleasium typhae</i>			<i>Trachycarpus fortunei</i>	Taylor and Hyde, 2003
Bidenticula Deighton				
<i>Bidenticula</i> sp.			<i>Calamus</i> sp.	Pinnoi <i>et al.</i> , 2009
			<i>Eleiodoxa conferta</i>	Pinnoi <i>et al.</i> , 2006
			<i>Licuala longicalycata</i>	Pinruan <i>et al.</i> , 2007
Bipolaris Shoemaker				
<i>Bipolaris setariae</i>			<i>Eleiodoxa conferta</i>	Sarapat, 2004
Blastophorella Boedijn			<i>Licuala paludosa</i>	Sarapat, 2004
<i>Blastophorella smilthii</i>			<i>Phoenix roebelenii</i>	Yanna, 2001
Botryodiplodia (Sacc.) Sacc.			<i>Arenga pinnata</i>	Yanna, 2001
<i>Botryodiplodia palmarum</i>			<i>Livistona chinensis</i>	Yanna, 2001
<i>Botryodiplodia theobromae</i>			<i>Phoenix dactylifera</i>	Yanna, 2001
			<i>Livistona chinensis</i>	Yanna, 2001
			<i>Livistona rotundifolia</i>	Yanna, 2001
			<i>Phoenix dactylifera</i>	Yanna, 2001

Fungus	Family	Order	Host	Note
<i>Brachysporiella</i> Bat.				
<i>Brachysporiella gayana</i>			<i>Archontophoenix alexandrae</i>	Taylor and Hyde, 2003
			<i>Areca catechu</i>	Sarapat, 2004
			<i>Calamus siamensis</i>	Sarapat, 2004
			<i>Calamus</i> sp.	Pinnoi <i>et al.</i> , 2009
			<i>Cryostachys renda</i>	Sarapat, 2004
			<i>Elaeis guineensis</i>	Taylor and Hyde, 2003
			<i>Eleiodoxa conferta</i>	Pinnoi <i>et al.</i> , 2006
			<i>Eleiodoxa conferta</i>	Sarapat, 2004
			<i>Korthalsia lacinosa</i>	Sarapat, 2004
			<i>Licuala paludosa</i>	Sarapat, 2004
			<i>Phoenix dactylifera</i>	Taylor and Hyde, 2003
			<i>Trachycarpus fortunei</i>	Taylor and Hyde, 2003
			<i>Trachycarpus fortunei</i>	Taylor and Hyde, 2003
			<i>Archontophoenix alexandrae</i>	Taylor and Hyde, 2003
			<i>Licuala longicalycata</i>	Pinruan <i>et al.</i> , 2007
			<i>Licuala longicalycata</i>	Pinruan <i>et al.</i> , 2007
			<i>Areca triandra</i>	Sarapat, 2004
			<i>Eleiodoxa conferta</i>	Pinnoi <i>et al.</i> , 2006, Sarapat,
			<i>Licuala longicalycata</i>	Pinruan <i>et al.</i> , 2007
			<i>Licuala paludosa</i>	Sarapat, 2004
			<i>Metroxylon sagu</i>	Sarapat, 2004
			<i>Areca triandra</i>	Sarapat, 2004
			<i>Eleiodoxa conferta</i>	Sarapat, 2004
			<i>Licuala paludosa</i>	Sarapat, 2004
			<i>Metroxylon sagu</i>	Sarapat, 2004
			<i>Licuala longicalycata</i>	Pinruan <i>et al.</i> , 2007

Camposporium* Harkn.Camposporium antennatum****Canalisporium* Nawawi & Kuthub.***Canalisporium caribense**Canalisporium variable****Cancellidium* Tubaki***Cancellidium applanatum*

2004

Candelabrella* Rifai & R.C. CookeCandelabrella musifomis****Candelabrum* Beverw.***Candelabrum brocchiatum*

Fungus	Family	Order	Host	Note
Capnodiastrum Speg.				
<i>Capnodiastrum</i> sp.			<i>Calamus</i> sp.	Pinnoi <i>et al.</i> , 2009
Catenularia Grove			<i>Eleiodoxa conferta</i>	Pinnoi <i>et al.</i> , 2006
<i>Catenularia fuliginea</i>			<i>Phoenix dactylifera</i>	Yanna, 2001
<i>Catenularia</i> sp.			<i>Areca triandra</i>	Sarapat, 2004
			<i>Calamus siamensis</i>	Sarapat, 2004
			<i>Pychosperma marcarthurii</i>	Sarapat, 2004
Cephalosporium Corda			<i>Phoenix dactylifera</i>	Yanna, 2001
<i>Cephalosporium</i> sp.			<i>Arenga westerhautii</i>	Yanna, 2001
Ceratosporella Höhn.			<i>Phoenix canariensis</i>	Yanna, 2001
<i>Ceratosporella disticha</i>			<i>Phoenix canariensis</i>	Yanna, 2001
Cercospora Fresen.			<i>Phoenix reclinata</i>	Yanna, 2001
<i>Cercospora palmivora</i>			<i>Phoenix roebelenii</i>	Yanna, 2001
<i>Cercospora preisii</i>			<i>Trachycarpus fortunei</i>	Taylor and Hyde, 2003
<i>Cercospora</i> sp.			<i>Areca catechu</i>	Sarapat, 2004
Ceuthospora Grev.			<i>Eleiodoxa conferta</i>	Sarapat, 2004
<i>Ceuthospora palmicola</i>			<i>Licuala paludosa</i>	Sarapat, 2004
Chaetochalara B. Sutton & Piroz.			<i>Metroxylon sagu</i>	Sarapat, 2004
<i>Chaetochalara</i> sp.			<i>Pinanga dicksonii</i>	Sarapat, 2004
Chaetospermum Sacc.			<i>Archontophoenix alexandrae</i>	Taylor and Hyde, 2003
<i>Chaetospermum camelliae</i>			<i>Licuala longiclycata</i>	Pinruan <i>et al.</i> , 2007
Chaetopsina Rambelli			<i>Archontophoenix alexandrae</i>	Taylor and Hyde, 2003
<i>Chaetopsina alexandrae</i>			<i>Phoenix roebelenii</i>	Yanna, 2001
<i>Chaetopsina hongkongensis</i>			<i>Eleiodoxa conferta</i>	Pinnoi <i>et al.</i> , 2006
<i>Chaetopsina</i> sp.				

Fungus	Family	Order	Host	Note
Chalara (Corda) Rabenh.				
<i>Chalara ovoidea</i>			<i>Eleiodoxa conferta</i>	Sarapat, 2004
<i>Chalara paradoxa</i>			<i>Phoenix canariensis</i>	Yanna, 2001
<i>Chalara siamense</i>			<i>Eleiodoxa conferta</i>	Pinnoi <i>et al.</i> , 2006
			<i>Licuala longicalycata</i>	Pinruan <i>et al.</i> , 2007
Chalaropsis Peyronel			<i>Phoenix canariensis</i>	Yanna, 2001
<i>Chalaropsis</i> sp.				
Chloridium Link				
<i>Chloridium cocoicolum</i>			<i>Archontophoenix alexandrae</i>	Taylor and Hyde, 2003
<i>Chloridium</i> sp.			<i>Eleiodoxa conferta</i>	Pinnoi <i>et al.</i> , 2006
Cilicliopodium Corda				
<i>Cilicliopodium macrosporium</i>			<i>Pinanga dicksonii</i>	Sarapat, 2004
Circinoconis Boedijn				
<i>Circinoconis paradoxa</i>			<i>Calamus</i> sp.	Pinnoi <i>et al.</i> , 2009
			<i>Doemonorops angustifolia</i>	Sarapat, 2004
Circinotrichum Nees				
<i>Circinotrichum falcatisporium</i>			<i>Archontophoenix alexandrae</i>	Taylor and Hyde, 2003
<i>Circinotrichum palmicolum</i>			<i>Archontophoenix alexandrae</i>	Taylor and Hyde, 2003
<i>Circinotrichum papakuruae</i>			<i>Trachycarpus fortunei</i>	Taylor and Hyde, 2003
<i>Circinotrichum poonense</i>			<i>Archontophoenix alexandrae</i>	Taylor and Hyde, 2003
			<i>Eleiodoxa conferta</i>	Sarapat, 2004
			<i>Licuala paludosa</i>	Sarapat, 2004
			<i>Pinanga dicksonii</i>	Sarapat, 2004
Cladosporium Link				
<i>Cladosporium cladosporioides</i>			<i>Trachycarpus fortunei</i>	Taylor and Hyde, 2003
<i>Cladosporium</i> sp.			<i>Phoenix dactylifera</i>	Yanna, 2001
Codinaea Maire				
<i>Codinaea assamica</i>			<i>Areca catechu</i>	Sarapat, 2004
			<i>Areca triandra</i>	Sarapat, 2004
			<i>Licuala paludosa</i>	Sarapat, 2004
Coleodictyospora Charles				
<i>Coleodictyospora micronesisica</i>			<i>Archontophoenix alexandrae</i>	Taylor and Hyde, 2003

Fungus	Family	Order	Host	Note
Coelophoma Höhn.				
<i>Coelophoma creteriformis</i>			<i>Calamus</i> sp.	Pinnoi <i>et al.</i> , 2009
<i>Coelophoma empetri</i>			<i>Cocos nucifera</i>	Taylor and Hyde, 2003
Colletotrichum Corda			<i>Eleiodoxa conferta</i>	Pinnoi <i>et al.</i> , 2006
<i>Colletotrichum acutatum</i>			<i>Trachycarpus fortunei</i>	Taylor and Hyde, 2003
<i>Colletotrichum derridis</i>			<i>Archontophoenix alexandrae</i>	Taylor and Hyde, 2003
<i>Colletotrichum gloeosporioides</i>				
Conioscypha Höhn.				
<i>Conioscypha lignicola</i>			<i>Trachycarpus fortunei</i>	Taylor and Hyde, 2003
Coniothyrium Corda			<i>Phoenix roebelenii</i>	Yanna, 2001
<i>Coniothyrium palmarum</i>			<i>Archontophoenix alexandrae</i>	Taylor and Hyde, 2003
<i>Coniothyrium</i> spp.			<i>Phoenix dactylifera</i>	Yanna, 2001
Cordana Preuss			<i>Phoenix roebelenii</i>	Yanna, 2001
<i>Cordana triseptata</i>			<i>Phoenix</i> spp.	Yanna, 2001
Corynespora Güssow			<i>Trachycarpus fortunei</i>	Taylor and Hyde, 2003
<i>Corynespora cassicola</i>				
Craspedodichyum Hol.-Jech.				
<i>Craspedodichyum elatum</i>			<i>Trachycarpus fortunei</i>	Taylor and Hyde, 2003
<i>Craspedodichyum licualae</i>			<i>Phoenix dactylifera</i>	Yanna, 2001
<i>Craspedodichyum microsporium</i>			<i>Trachycarpus fortunei</i>	Taylor and Hyde, 2003
<i>Craspedodichyum siamense</i>				
Cryptophialoidea Kuthub. & Nawawia			<i>Calamus</i> sp.	Pinnoi <i>et al.</i> , 2009
<i>Cryptophialoidea manifesta</i>				
			<i>Licuala paludosa</i>	Sarapat, 2004
			<i>Pinanga dicksonii</i>	Sarapat, 2004
			<i>Phoenix canariensis</i>	Yanna, 2001
			<i>Licuala longicaycata</i>	Pinruan <i>et al.</i> , 2007
			<i>Licuala longicaycata</i>	Pinruan <i>et al.</i> , 2007
			<i>Licuala longicaycata</i>	Pinruan <i>et al.</i> , 2007

Fungus	Family	Order	Host	Note
Curucispora Matsush.				
<i>Curucispora flabelliformis</i> var. <i>boninensis</i>			<i>Livistona chinensis</i>	Yanna, 2001
Curvularia Boedijn				
<i>Curvularia andropogonis</i>			<i>Phoenix dactylifera</i>	Yanna, 2001
<i>Curvularia lunata</i>			<i>Trachycarpus fortunei</i>	Taylor and Hyde, 2003
<i>Curvularia sengalensis</i>			<i>Archontophoenix alexandrinae</i>	Taylor and Hyde, 2003
Custingophora Stolk, Hennebert & Klopotek				
<i>Custingophora undulatistipes</i>				
Cylindrocladiella Boesew.				
<i>Cylindrocladiella infestans</i>			<i>Eleiodoxa conferta</i>	Pinnoi <i>et al.</i> , 2006
<i>Cylindrocladiella peruviana</i>			<i>Arenga pinnata</i>	Yanna, 2001
Cylindrocladium Morgan				
<i>Cylindrocladium</i> sp.			<i>Phoenix roebelenii</i>	Yanna, 2001
			<i>Calamus</i> sp.	Pinnoi <i>et al.</i> , 2009
			<i>Eleiodoxa conferta</i>	Sarapat, 2004
			<i>Licuala paludosa</i>	Sarapat, 2004
			<i>Metroxylon sagu</i>	Sarapat, 2004
Cytospora Ehrenb.				
<i>Cytospora angularis</i>			<i>Arenga pinnata</i>	Yanna, 2001
Dactylaria Sacc.				
<i>Dactylaria</i> cf. <i>arecae</i>			<i>Archontophoenix alexandrinae</i>	Taylor and Hyde, 2003
<i>Dactylaria flammulicornuta</i>			<i>Eleiodoxa conferta</i>	Pinnoi <i>et al.</i> , 2006
<i>Dactylaria hemibeltranioides</i>			<i>Licuala longicalycata</i>	Pinruan <i>et al.</i> , 2007
<i>Dactylaria junci</i>			<i>Areca triandra</i>	Sarapat, 2004
			<i>Caryota urens</i>	Sarapat, 2004
<i>Dactylaria</i> spp.			<i>Eleiodoxa conferta</i>	Sarapat, 2004
			<i>Pinanga dicksonii</i>	Sarapat, 2004
			<i>Calamus</i> sp.	Pinnoi <i>et al.</i> , 2009
			<i>Eleiodoxa conferta</i>	Sarapat, 2004
			<i>Eleiodoxa conferta</i>	Pinnoi <i>et al.</i> , 2006
Dactylaria uliginicola				
Dactylaria Grove				
<i>Dactylaria</i> spp.			<i>Eleiodoxa conferta</i>	Pinnoi <i>et al.</i> , 2006
Dactylosporium Harz				
<i>Dactylosporium macropus</i>			<i>Arenga engleri</i>	Yanna, 2001

Fungus	Family	Order	Host	Note
Delortia Pat. & Gaillard				
<i>Delortia palmicola</i>			<i>Eleiodoxa conferta</i>	Pinnoi <i>et al.</i> , 2006
Dendrodochium Bonord			<i>Licuala longicalycata</i>	Pinruan <i>et al.</i> , 2007
<i>Dendrodochium vagans</i>			<i>Arenga pinnata</i>	Yanna, 2001
Dendrosporium Plakidas & Edgerton ex J.L. Crane			<i>Metroxylon sagu</i>	Sarapat, 2004
<i>Dendrosporium</i> sp.			<i>Arenga engleri</i>	Yanna, 2001
Dicranidium Harkn.			<i>Archontophoenix alexandrae</i>	Taylor and Hyde, 2003
Dictyochaeta Spig.				
<i>Dictyochaeta</i> anamorph of				
<i>Chaetosphaeria callimorpha</i>			<i>Archontophoenix alexandrae</i>	Taylor and Hyde, 2003
<i>Dictyochaeta assamica</i>			<i>Archontophoenix alexandrae</i>	Taylor and Hyde, 2003
<i>Dictyochaeta coffeae</i>			<i>Archontophoenix alexandrae</i>	Taylor and Hyde, 2003
<i>Dictyochaeta fertilis</i>			<i>Licuala longicalycata</i>	Pinruan <i>et al.</i> , 2007
<i>Dictyochaeta gyrosetula</i>			<i>Archontophoenix alexandrae</i>	Taylor and Hyde, 2003
<i>Dictyochaeta parva</i>			<i>Licuala longicalycata</i>	Pinruan <i>et al.</i> , 2007
<i>Dictyochaeta ramulosetula</i>			<i>Oncosperma tigillarum</i>	Yanna, 2001
<i>Dictyochaeta tumidoseta</i>			<i>Oncosperma horridum</i>	Yanna, 2001
<i>Dictyochaeta variadoseta</i>				
Dictyosporium Corda				
<i>Dictyosporium campaniforme</i>			<i>Daemonorops</i> sp.	Taylor and Hyde, 2003
<i>Dictyosporium digitatum</i>			<i>Trachycarpus fortunei</i>	Taylor and Hyde, 2003
<i>Dictyosporium elegans</i>			<i>Licuala longicalycata</i>	Pinruan <i>et al.</i> , 2007
			<i>Caryota urens</i>	Sarapat, 2004
			<i>Nypa fruticans</i>	Pilantanapak, 2003
			<i>Pinanga dicksonii</i>	Sarapat, 2004
			<i>Pychosperma marcarthuri</i>	Sarapat, 2004
			<i>Archontophoenix alexandrae</i>	Taylor and Hyde, 2003
<i>Dictyosporium cf. elegans</i>			<i>Areca catechu</i>	Sarapat, 2004
<i>Dictyosporium giganticum</i>			<i>Caryota urens</i>	Sarapat, 2004
<i>Dictyosporium heptasporium</i>			<i>Nypa fruticans</i>	Pilantanapak, 2003
<i>Dictyosporium</i> spp.			<i>Archontophoenix alexandrae</i>	Taylor and Hyde, 2003
			<i>Areca triandra</i>	Sarapat, 2004

Fungus	Family	Order	Host	Note
<i>Didymobotryum</i> Sacc.				
<i>Didymobotryum cookiei</i>			<i>Calamus</i> sp.	Pinnoi <i>et al.</i> , 2009
<i>Didymosporium</i> Nees				
<i>Didymosporium australe</i>			<i>Caryota urens</i>	Sarapat, 2004
<i>Didymostilbe</i> Henn.				
<i>Didymostilbe aurantiospora</i>			<i>Cryostotachys renda</i>	Sarapat, 2004
<i>Didymostilbe matsushimae</i>			<i>Nypa fruticans</i>	Pilantanapak, 2003
<i>Diplocaldiella</i> G. Arnaud ex M.B. Ellis				
<i>Diplocaldiella</i> sp.			<i>Areca catechu</i>	Sarapat, 2004
<i>Diplococcium</i> Grove				
<i>Diplococcium asperum</i>			<i>Areca triandra</i>	Sarapat, 2004
<i>Diplococcium sp.</i>			<i>Phoenix dactylifera</i>	Yanna, 2001
<i>Diplococcium stoveri</i>			<i>Arenga engleri</i>	Yanna, 2001
<i>Diplodia</i> Fr.				
<i>Diplodia albotecta</i>			<i>Arenga engleri</i>	Yanna, 2001
<i>Diplodia arengocarpa</i>			<i>Calamus</i> sp.	Pinnoi <i>et al.</i> , 2009
<i>Diplodia mutila</i>			<i>Archontophoenix alexandrae</i>	Taylor and Hyde, 2003
<i>Diplodia passeriniana</i>			<i>Trachycarpus fortunei</i>	Taylor and Hyde, 2003
<i>Diplodia phoenicicola</i>			<i>Arenga pinnata</i>	Yanna, 2001
<i>Diplodia phoenicum</i>			<i>Arenga pinnata</i>	Yanna, 2001
<i>Diplodia pinnarum</i>			<i>Archontophoenix alexandrae</i>	Taylor and Hyde, 2003
<i>Diplodia</i> spp.			<i>Trachycarpus fortunei</i>	Taylor and Hyde, 2003
			<i>Arenga pinnata</i>	Yanna, 2001
			<i>Phoenix dactylifera</i>	Yanna, 2001
			<i>Phoenix canariensis</i>	Yanna, 2001
			<i>Phoenix dactylifera</i>	Yanna, 2001
			<i>Phoenix dactylifera</i>	Yanna, 2001
			<i>Trachycarpus fortunei</i>	Taylor and Hyde, 2003
			<i>Phoenix dactylifera</i>	Yanna, 2001
			<i>Phoenix roebelenii</i>	Yanna, 2001

Fungus	Family	Order	Host	Note
Dischloridium B. Sutton				
<i>Dischloridium laeense</i>			<i>Archontophoenix alexandrae</i>	Taylor and Hyde, 2003
<i>Dischloridium</i> sp.			<i>Eleiodoxa conferta</i>	Pinnoi <i>et al.</i> , 2006
Drepanospora Berk. & M.A. Curtis				
<i>Drepanospora pamosa</i>			<i>Cocos nucifera</i>	Taylor and Hyde, 2003
Dwayabeeja Subram.				
<i>Dwayabeeja sundara</i>			<i>Phoenix canariensis</i>	Yanna, 2001
Ellisemia Subram.				
<i>Ellisemia ascendans</i>			<i>Trachycarpus fortunei</i>	Taylor and Hyde, 2003
<i>Ellisemia vaginata</i>			<i>Metroxylon sagu</i>	Sarapat, 2004
<i>Ellisemia</i> spp.			<i>Calamus</i> sp.	Pinnoi <i>et al.</i> , 2009
Ellisiopsis Bat.				
<i>Ellisiopsis gallsiae</i>			<i>Areca catechu</i>	Sarapat, 2004
Endocalyx Berk. & Broome				
<i>Endocalyx melanoxanthus</i>			<i>Metroxylon sagu</i>	Sarapat, 2004
Endocalyx Berk. & Broome				
<i>Endocalyx thwaitesii</i>			<i>Archontophoenix alexandrae</i>	Taylor and Hyde, 2003
Endosporotilbe Subram.				
<i>Endosporotilbe</i> sp.			<i>Borassus</i> spp.	Taylor and Hyde, 2003
Epicoccum Link				
<i>Epicoccum purpur-ascens</i>			<i>Cocos nucifera</i>	Taylor and Hyde, 2003
Exosporium Link				
<i>Exosporium palmivorum</i> var. <i>formosana</i>			<i>Elaeis</i> spp.	Taylor and Hyde, 2003
			<i>Licuala longicalycata</i>	Pinruan <i>et al.</i> , 2007
			<i>Livistona rotundifolia</i>	Yanna, 2001
			<i>Phoenix</i> spp.	Taylor and Hyde, 2003
			<i>Trachycarpus fortunei</i>	Taylor and Hyde, 2003
			<i>Oncosperma</i> sp.	Yanna, 2001
			<i>Eleiodoxa conferta</i>	Sarapat, 2004
			<i>Archontophoenix alexandrae</i>	Taylor and Hyde, 2003
			<i>Trachycarpus fortunei</i>	Taylor and Hyde, 2003
			<i>Phoenix canariensis</i>	Yanna, 2001
			<i>Phoenix dactylifera</i>	Yanna, 2001
			<i>Phoenix hanceana</i>	Yanna, 2001

Fungus	Family	Order	Host	Note
Exserioclava S. Hughes				
<i>Exserioclava vasiformis</i>			<i>Phoenix reclinata</i>	Yanna, 2001
Fusarium Link			<i>Phoenix</i> spp.	Yanna, 2001
<i>Fusarium albedinis</i>			<i>Calamus</i> sp.	Pinnoi <i>et al.</i> , 2009
<i>Fusarium graminearum</i>			<i>Phoenix dactylifera</i>	Yanna, 2001
<i>Fusarium moniliforme</i>			<i>Trachycarpus fortunei</i>	Taylor and Hyde, 2003
<i>Fusarium oxysporum</i>			<i>Phoenix dactylifera</i>	Yanna, 2001
<i>Fusarium poae</i>			<i>Phoenix canariensis</i>	Yanna, 2001
<i>Fusarium proliferatum</i>			<i>Phoenix dactylifera</i>	Yanna, 2001
<i>Fusarium semitectum</i>			<i>Phoenix dactylifera</i>	Yanna, 2001
<i>Fusarium solani</i>			<i>Phoenix dactylifera</i>	Yanna, 2001
<i>Fusarium</i> spp.			<i>Phoenix dactylifera</i>	Taylor and Hyde, 2003
			<i>Trachycarpus fortunei</i>	Taylor and Hyde, 2003
			<i>Phoenix roebelenii</i>	Yanna, 2001
			<i>Trachycarpus fortunei</i>	Taylor and Hyde, 2003
			<i>Areca catechu</i>	Sarapat, 2004
			<i>Phoenix canariensis</i>	Yanna, 2001
			<i>Phoenix dactylifera</i>	Yanna, 2001
			<i>Phoenix reclinata</i>	Yanna, 2001
			<i>Phoenix roebelenii</i>	Yanna, 2001
			<i>Trachycarpus fortunei</i>	Taylor and Hyde, 2003
			<i>Trachycarpus fortunei</i>	Taylor and Hyde, 2003
Fusicoccum Corda				
<i>Fusicoccum aesculi</i>				
<i>Fusicoccum parvum</i>				
<i>Fusicoccum</i> sp.				
Geniculosporium Chesters & Greenh.				
<i>Geniculosporium serpens</i> state Of Hypoxylon serpens				
Gliocladium Corda				
<i>Gliocladium vermoeseni</i>			<i>Trachycarpus fortunei</i>	Taylor and Hyde, 2003
			<i>Phoenix canariensis</i>	Yanna, 2001

Fungus	Family	Order	Host	Note
<i>Gliocladium</i> sp.			<i>Phoenix dactylifera</i>	Yanna, 2001
Gliomastix Guég.			<i>Licuala longicalycata</i>	Pinruan <i>et al.</i> , 2007
<i>Gliomastix fusigera</i>			<i>Arenga engleri</i>	Yanna, 2001
<i>Gliomastix phoenicis</i>			<i>Phoenix dactylifera</i>	Yanna, 2001
<i>Gliomastix</i> state of			<i>Cocos nucifera</i>	Taylor and Hyde, 2003
<i>Walrothiella subiculosa</i>				
Goidanichiella G.L. Barron ex W. Grams				
<i>Goidanichiella fusiforma</i>			<i>Calamus</i> sp.	Pinnoi <i>et al.</i> , 2009
Gonytrichum Nees & Nees			<i>Eleiodoxa conferta</i>	Pinnoi <i>et al.</i> , 2006
<i>Gonytrichum macrocladum</i>			<i>Eleiodoxa conferta</i>	Pinnoi <i>et al.</i> , 2006
Gractilistibella Seifert			<i>Licuala longicalycata</i>	Pinruan <i>et al.</i> , 2007
<i>Gractilistibella clavulata</i>			<i>Archontophoenix alexandrae</i>	Taylor and Hyde, 2003
Gyrothrix (Corda) Corda			<i>Trachycarpus fortunei</i>	Taylor and Hyde, 2003
<i>Gyrothrix circinata</i>			<i>Archontophoenix alexandrae</i>	Taylor and Hyde, 2003
<i>Gyrothrix microsperma</i>			<i>Archontophoenix alexandrae</i>	Taylor and Hyde, 2003
<i>Gyrothrix podosperma</i>			<i>Cocos nucifera</i>	Taylor and Hyde, 2003
Haplographium Berk. & Broome			<i>Trachycarpus fortunei</i>	Taylor and Hyde, 2003
<i>Haplographium</i> sp.			<i>Archontophoenix alexandrae</i>	Taylor and Hyde, 2003
<i>Hyaloscyptha dematiicola</i>			<i>Archontophoenix alexandrae</i>	Taylor and Hyde, 2003
Helicoma Corda			<i>Eleiodoxa conferta</i>	Pinnoi <i>et al.</i> , 2006
<i>Helicoma dennisii</i>			<i>Caryota urens</i>	Sarapat, 2004
<i>Helicoma palmigenum</i>			<i>Arenga engleri</i>	Yanna, 2001
<i>Helicoma</i> spp.			<i>Cocos nucifera</i>	Taylor and Hyde, 2003
			<i>Calamus</i> sp.	Pinnoi <i>et al.</i> , 2009
			<i>Eleiodoxa conferta</i>	Pinnoi <i>et al.</i> , 2006
			<i>Licuala longicalycata</i>	Pinruan <i>et al.</i> , 2007

Fungus	Family	Order	Host	Note
Helicomycetes Link				
<i>Helicomycetes lilliputeus</i>			<i>Archontophoenix alexandrae</i>	Taylor and Hyde, 2003
<i>Helicomycetes roseus</i>			<i>Cocos nucifera</i>	Taylor and Hyde, 2003
<i>Helicomycetes torquatus</i>			<i>Eleiodoxa conferta</i>	Pinnoi <i>et al.</i> , 2006
Helicorhoidion S. Hughes			<i>Archontophoenix alexandrae</i>	Taylor and Hyde, 2003
<i>Helicorhoidion rypicola</i>				
Helicosporium Nees			<i>Nypa fruticans</i>	Pilantanapak, 2003
<i>Helicosporium aureum</i>			<i>Areca triandra</i>	Sarapat, 2004
			<i>Caryota urens</i>	Sarapat, 2004
			<i>Eleiodoxa conferta</i>	Sarapat, 2004
			<i>Licuala paludosa</i>	Sarapat, 2004
			<i>Pinanga dicksonii</i>	Sarapat, 2004
			<i>Licuala longicalycata</i>	Pinruan <i>et al.</i> , 2007
<i>Helicosporium gigasporum</i>			<i>Archontophoenix alexandrae</i>	Taylor and Hyde, 2003
<i>Helicosporium guianensis</i>			<i>Cocos nucifera</i>	Taylor and Hyde, 2003
<i>Helicosporium</i> sp.			<i>Eleiodoxa conferta</i>	Pinnoi <i>et al.</i> , 2006
<i>Helicosporium vegetum</i>			<i>Eleiodoxa conferta</i>	Sarapat, 2004
			<i>Licuala paludosa</i>	Sarapat, 2004
			<i>Pinanga dicksonii</i>	Sarapat, 2004
			<i>Eleiodoxa conferta</i>	Pinnoi <i>et al.</i> , 2006
Helicoubisia Lunghini & Rambelli				
<i>Helicoubisia coronata</i>			<i>Phoenix dactylifera</i>	Yanna, 2001
Helminthosporium Link			<i>Phoenix reclinata</i>	Yanna, 2001
<i>Helminthosporium molle</i>			<i>Arenga engleri</i>	Yanna, 2001
<i>Helminthosporium palmetto</i>			<i>Phoenix rupicola</i>	Yanna, 2001
<i>Helminthosporium palmigenum</i>			<i>Arenga mindorensis</i>	Yanna, 2001
<i>Helminthosporium philippinum</i>			<i>Calamus</i> sp.	Pinnoi <i>et al.</i> , 2009
<i>Helminthosporium senseletii</i>			<i>Cocos nucifera</i>	Taylor and Hyde, 2003
<i>Helminthosporium</i> cf. <i>solani</i>			<i>Calamus</i> sp.	Pinnoi <i>et al.</i> , 2009
<i>Helminthosporium</i> spp.			<i>Eleiodoxa conferta</i>	Sarapat, 2004
			<i>Korthalsia laciniosa</i>	Sarapat, 2004

Fungus	Family	Order	Host	Note
<i>Helminthosporium velutinum</i>			<i>Licuala paludosa</i>	Sarapat, 2004
Hendersonia E.J. Butler			<i>Pinanga dicksonii</i>	Sarapat, 2004
<i>Hendersonia grandimaculans</i>			<i>Phoenix canariensis</i>	Yanna, 2001
<i>Hendersonia sabaleos</i>			<i>Phoenix reclinata</i>	Yanna, 2001
<i>Hendersonia sabaleos</i> var. <i>phoenicis</i>			<i>Trachycarpus fortunei</i>	Taylor and Hyde, 2003
<i>Hendersonia senegalensis</i>			<i>Phoenix dactylifera</i>	Yanna, 2001
Hermatomyces Speg.			<i>Phoenix dactylifera</i>	Yanna, 2001
<i>Hermatomyces sphaericum</i>			<i>Phoenix dactylifera</i>	Yanna, 2001
Heteroconium Petr.			<i>Phoenix canariensis</i>	Yanna, 2001
<i>Heteroconium</i> sp.			<i>Phoenix canariensis</i>	Yanna, 2001
Hypodisia Lodha & K.R.C. Reddy			<i>Archontophoenix alexandrae</i>	Taylor and Hyde, 2003
<i>Hypodiscosia jaipurensis</i>			<i>Elaeis guineensis</i>	Taylor and Hyde, 2003
Idriella P.E. Nelson & S. Willh.			<i>Eleiodoxa conferta</i>	Pinnoi <i>et al.</i> , 2006
<i>Idriella</i> cf. <i>licuatae</i>			<i>Calamus</i> sp.	Pinnoi <i>et al.</i> , 2009
Koorchaloma Subram.			<i>Licuala ramsayi</i>	Taylor and Hyde, 2003
<i>Koorchaloma bambusae</i>			<i>Trachycarpus fortunei</i>	Taylor and Hyde, 2003
Kostermansinda Rifai			<i>Licuala longiclycata</i>	Pinruan <i>et al.</i> , 2007
<i>Kostermansinda magna</i>			<i>Arenga microsperma</i>	Yanna, 2001
Lasiodiplodia Ellis & Everth.			<i>Archontophoenix alexandrae</i>	Taylor and Hyde, 2003
<i>Lasiodiplodia theobromae</i>			<i>Cocos nucifera</i>	Taylor and Hyde, 2003
			<i>Licuala longiclycata</i>	Pinruan <i>et al.</i> , 2007
			<i>Trachycarpus fortunei</i>	Taylor and Hyde, 2003
			<i>Licuala longiclycata</i>	Pinruan <i>et al.</i> , 2007
Lasiodiplodia sp.			<i>Phoenix roebelenii</i>	Yanna, 2001
Leptothyrium Kunze				
<i>Leptothyrium</i> sp.				

Fungus	Family	Order	Host	Note
Lindquistia Subram. & Chandrash				
<i>Lindquistia</i> anamorph of			<i>Phoenix dactylifera</i>	Yanna, 2001
<i>Podosordaria ingii</i>				
Macrophoma (Sacc.) Berl. & Voglino				
<i>Macrophoma arengae</i>			<i>Arenga pinnata</i>	Yanna, 2001
<i>Macrophoma</i> sp.			<i>Phoenix roebelenii</i>	Yanna, 2001
Macrosporium Fr.				
<i>Macrosporium</i> sp.			<i>Phoenix reclinata</i>	Yanna, 2001
Mauginiella Cavara				
<i>Mauginiella scaettae</i>			<i>Phoenix dactylifera</i>	Yanna, 2001
Melanconium Link				
<i>Melanconium</i> sp.			<i>Livistona</i> sp.	Yanna, 2001
Melanographium Sacc.				
<i>Melanographium citri</i>			<i>Archontophoenix alexandrae</i>	Taylor and Hyde, 2003
			<i>Arenga engleri</i>	Yanna, 2001
			<i>Calamus</i> sp.	Pinnoi <i>et al.</i> , 2009
			<i>Eleiodoxa conferta</i>	Pinnoi <i>et al.</i> , 2006
<i>Melanographium palmicola</i>			<i>Trachycarpus fortunei</i>	Taylor and Hyde, 2003
<i>Melanographium selenioides</i>			<i>Licuata longicalycata</i>	Pinruan <i>et al.</i> , 2007
			<i>Caryota urens</i>	Sarapat, 2004
			<i>Licuata paludosa</i>	Sarapat, 2004
Memnoniella Höhn.				
<i>Memnoniella echinata</i>			<i>Archontophoenix alexandrae</i>	Taylor and Hyde, 2003
			<i>Areca triandra</i>	Sarapat, 2004
			<i>Eleiodoxa conferta</i>	Sarapat, 2004
			<i>Pychosperma marcarthurii</i>	Sarapat, 2004
Menispora Pers.				
<i>Menispora gamsii</i>			<i>Trachycarpus fortunei</i>	Taylor and Hyde, 2003
Microdiplodia Tassi				
<i>Microdiplodia passeriniana</i>			<i>Phoenix dactylifera</i>	Yanna, 2001
<i>Microdiplodia</i> sp.			<i>Phoenix dactylifera</i>	Yanna, 2001
Microsphaeropsis Höhn				
<i>Microsphaeropsis olivacea</i>			<i>Trachycarpus fortunei</i>	Taylor and Hyde, 2003

Fungus	Family	Order	Host	Note
<i>Microsphaeropsis</i> spp.			<i>Trachycarpus fortunei</i>	Taylor and Hyde, 2003
Mirandina G. Arnaud ex Matsush.			<i>Licuala paludosa</i>	Sarapat, 2004
<i>Mirandina corticola</i>			<i>Pinanga dicksonii</i>	Sarapat, 2004
Monacrosporium Oudem.			<i>Areca catechu</i>	Sarapat, 2004
<i>Monacrosporium</i> spp.			<i>Caryota urens</i>	Sarapat, 2004
			<i>Eleiodoxa conferta</i>	Sarapat, 2004
			<i>Licuala paludosa</i>	Sarapat, 2004
			<i>Metroxylon sagu</i>	Sarapat, 2004
Monotosporella S. Hughes			<i>Eleiodoxa conferta</i>	Pinnoi <i>et al.</i> , 2006
<i>Monotosporella rhizoidea</i>			<i>Licuala longicalycata</i>	Pinruan <i>et al.</i> , 2007
Nakataea Hara			<i>Areca triandra</i>	Sarapat, 2004
<i>Nakataea</i> sp.			<i>Eleiodoxa conferta</i>	Pinnoi <i>et al.</i> , 2006
Nawawia Marvanová			<i>Licuala longicalycata</i>	Pinruan <i>et al.</i> , 2007
<i>Nawawia filiformis</i>			<i>Licuala paludosa</i>	Sarapat, 2004
			<i>Metroxylon sagu</i>	Sarapat, 2004
Neottiosporella Höhn. Ex Falck			<i>Caryota urens</i>	Sarapat, 2004
<i>Neottiosporellaradicata</i>			<i>Eleiodoxa conferta</i>	Sarapat, 2004
			<i>Licuala paludosa</i>	Sarapat, 2004
Neottiosporella sp.			<i>Eleiodoxa conferta</i>	Sarapat, 2004
			<i>Licuala paludosa</i>	Sarapat, 2004
Nigrospora Zimm.			<i>Archontophoenix alexandrae</i>	Taylor and Hyde, 2003
<i>Nigrospora</i> state of			<i>Cocos nucifera</i>	Taylor and Hyde, 2003
<i>Khuskia oryzae</i>			<i>Trachycarpus fortunei</i>	Taylor and Hyde, 2003
Nodulisporium Preuss			<i>Trachycarpus fortunei</i>	Taylor and Hyde, 2003
<i>Nodulisporium</i> anamorph of				

Fungus	Family	Order	Host	Note
<i>Hypoxylon fuscum</i>			<i>Trachycarpus fortunei</i>	Taylor and Hyde, 2003
<i>Nodulisporium sylviforme</i>			<i>Nypa fruticans</i>	Pilantanapak, 2003
Nypaella K.D. Hyde & B. Sutton			<i>Oncosperma horridum</i>	Yanna, 2001
<i>Nypella frondicola</i>			<i>Pinanga dicksonii</i>	Sarapat, 2004
Nusia Subram.			<i>Licuala paludosa</i>	Sarapat, 2004
<i>Nusia collarata</i>			<i>Phoenix</i> sp.	Yanna, 2001
Oedemium Link			<i>Trachycarpus fortunei</i>	Taylor and Hyde, 2003
<i>Oedemium</i> sp.			<i>Phoenix dactylifera</i>	Yanna, 2001
Olpitrichum G.F. Atk.			<i>Phoenix dactylifera</i>	Yanna, 2001
<i>Olpitrichum</i> sp.			<i>Phoenix canariensis</i>	Yanna, 2001
Panchanania Subram. & N.G. Nair			<i>Eleiodoxa conferta</i>	Pinnoi <i>et al.</i> , 2006
<i>Panchanania jaipurensis</i>			<i>Licuala longicalycata</i>	Pinruan <i>et al.</i> , 2007
Parahendersonia A.W. Ramaley			<i>Trachycarpus fortunei</i>	Taylor and Hyde, 2003
<i>Parahendersonia trachycarpa</i>			<i>Trachycarpus fortunei</i>	Taylor and Hyde, 2003
Penicillium Link			<i>Trachycarpus fortunei</i>	Taylor and Hyde, 2003
<i>Penicillium expansum</i>			<i>Trachycarpus fortunei</i>	Taylor and Hyde, 2003
<i>Penicillium roseum</i>			<i>Phoenix dactylifera</i>	Yanna, 2001
<i>Penicillium vermoesenii</i>			<i>Phoenix canariensis</i>	Yanna, 2001
<i>Penicillium</i> spp.			<i>Eleiodoxa conferta</i>	Pinnoi <i>et al.</i> , 2006
			<i>Licuala longicalycata</i>	Pinruan <i>et al.</i> , 2007
			<i>Trachycarpus fortunei</i>	Taylor and Hyde, 2003
Periconia Tode			<i>Trachycarpus fortunei</i>	Taylor and Hyde, 2003
<i>Periconia byssoides</i>			<i>Trachycarpus fortunei</i>	Taylor and Hyde, 2003
<i>Periconia cookei</i>			<i>Trachycarpus fortunei</i>	Taylor and Hyde, 2003
<i>Periconia digitata</i>			<i>Trachycarpus fortunei</i>	Taylor and Hyde, 2003
<i>Periconia minutissima</i>			<i>Trachycarpus fortunei</i>	Taylor and Hyde, 2003
<i>Periconia tirupatiensis</i>			<i>Phoenix</i> sp.	Yanna, 2001
<i>Periconia trachycarpicola</i>			<i>Trachycarpus fortunei</i>	Taylor and Hyde, 2003
Pestalotia De Not.			<i>Arenga saccharifera</i>	Yanna, 2001
<i>Pestalotia arengae</i>			<i>Arenga tremula</i>	Yanna, 2001
<i>Pestalotia palmarum</i>			<i>Phoenix canariensis</i>	Yanna, 2001
			<i>Phoenix dactylifera</i>	Yanna, 2001

Fungus	Family	Order	Host	Note
<i>Pestalotia phoenicicola</i>			<i>Phoenix reclinata</i>	Yanna, 2001
<i>Pestalotia phoenicis</i>			<i>Phoenix roebelenii</i>	Yanna, 2001
<i>Pestalotia</i> spp.			<i>Phoenix sylvestris</i>	Yanna, 2001
			<i>Phoenix rupicola</i>	Yanna, 2001
			<i>Arenga pinnata</i>	Yanna, 2001
			<i>Phoenix canariensis</i>	Yanna, 2001
			<i>Phoenix dactylifera</i>	Yanna, 2001
			<i>Phoenix rupicola</i>	Yanna, 2001
			<i>Phoenix</i> sp.	Yanna, 2001
<i>Pestalotiopsis Steyaert</i>			<i>Calamus margaritae</i>	Taylor and Hyde, 2003
<i>Pestalotiopsis caroliniana</i>			<i>Trachycarpus fortunei</i>	Taylor and Hyde, 2003
<i>Pestalotiopsis disseminata</i>			<i>Trachycarpus fortunei</i>	Taylor and Hyde, 2003
<i>Pestalotiopsis microspora</i>			<i>Archontophoenix alexandrae</i>	Taylor and Hyde, 2003
<i>Pestalotiopsis palmarum</i>			<i>Archontophoenix alexandrae</i>	Taylor and Hyde, 2003
			<i>Phoenix</i> sp.	Yanna, 2001
			<i>Phoenix sylvestris</i>	Yanna, 2001
<i>Pestalotiopsis phoenicis</i>			<i>Trachycarpus fortunei</i>	Taylor and Hyde, 2003
<i>Pestalotiopsis</i> sp.			<i>Phoenix dactylifera</i>	Yanna, 2001
<i>Pestalotiopsis theae</i>			<i>Nypa fruticans</i>	Pilantanapak, 2003
			<i>Cocos nucifera</i>	Taylor and Hyde, 2003
			<i>Elaeis</i> spp.	Taylor and Hyde, 2003
			<i>Trachycarpus fortunei</i>	Taylor and Hyde, 2003
			<i>Phoenix rupicola</i>	Yanna, 2001
<i>Pestalotiopsis versicolor</i>			<i>Licuala longicalycata</i>	Pinruan <i>et al.</i> , 2007
<i>Petraktopsis Subram. & K.R.C. Reddy</i>			<i>Archontophoenix alexandrae</i>	Taylor and Hyde, 2003
<i>Petraktopsis</i> sp.			<i>Cocos nucifera</i>	Taylor and Hyde, 2003
<i>Phaeoisaria Höhn</i>			<i>Areca triandra</i>	Sarapat, 2004
<i>Phaeoisaria clematidis</i>			<i>Eleiodoxa conferta</i>	Sarapat, 2004
			<i>Eleiodoxa conferta</i>	Sarapat, 2004

Fungus	Family	Order	Host	Note
Phaeophleospora Rangel			<i>Licuala longicalycata</i>	Pinruan <i>et al.</i> , 2007
<i>Phaeophleospora striae</i>			<i>Trachycarpus fortunei</i>	Taylor and Hyde, 2003
Phialogeniculata Medlar			<i>Eleiodoxa conferta</i>	Pinnoi <i>et al.</i> , 2006
<i>Phialogeniculata</i> sp.			<i>Phoenix dactylifera</i>	Yanna, 2001
Phialophora Medlar			<i>Archontophoenix alexandrae</i>	Taylor and Hyde, 2003
<i>Phialophora parasitica</i>			<i>Cocos nucifera</i>	Taylor and Hyde, 2003
Phoma Sacc.			<i>Trachycarpus fortunei</i>	Taylor and Hyde, 2003
<i>Phoma cava</i>			<i>Phoenix dactylifera</i>	Yanna, 2001
<i>Phoma cocoinea</i> var. <i>phoenicis</i>			<i>Trachycarpus fortunei</i>	Taylor and Hyde, 2003
<i>Phoma eupyrena</i>			<i>Trachycarpus fortunei</i>	Taylor and Hyde, 2003
<i>Phoma glomerata</i>			<i>Trachycarpus fortunei</i>	Taylor and Hyde, 2003
<i>Phoma multirostrata</i>			<i>Trachycarpus fortunei</i>	Taylor and Hyde, 2003
<i>Phoma nebulosa</i>			<i>Trachycarpus fortunei</i>	Taylor and Hyde, 2003
<i>Phoma pinodella</i>			<i>Phoenix dactylifera</i>	Yanna, 2001
<i>Phoma plagia</i>			<i>Trachycarpus fortunei</i>	Taylor and Hyde, 2003
<i>Phoma pomorum</i>			<i>Archontophoenix alexandrae</i>	Taylor and Hyde, 2003
<i>Phoma</i> spp.			<i>Cocos nucifera</i>	Taylor and Hyde, 2003
			<i>Trachycarpus fortunei</i>	Taylor and Hyde, 2003
Phomopsis (sacc.) Bubák			<i>Livistona</i> sp.	Yanna, 2001
<i>Phomopsis arecae</i>			<i>Cocos nucifera</i>	Taylor and Hyde, 2003
<i>Phomopsis cocoina</i>			<i>Corypha umbraculifera</i>	Taylor and Hyde, 2003
			<i>Livistona</i> sp.	Yanna, 2001
<i>Phomopsis palmicola</i>			<i>Phoenix dactylifera</i>	Yanna, 2001
<i>Phomopsis phoenicola</i>			<i>Archontophoenix alexandrae</i>	Taylor and Hyde, 2003
<i>Phomopsis</i> spp.			<i>Phoenix canariensis</i>	Yanna, 2001
			<i>Phoenix dactylifera</i>	Yanna, 2001
			<i>Phoenix reclinata</i>	Yanna, 2001
			<i>Phoenix roebelenii</i>	Yanna, 2001

Fungus	Family	Order	Host	Note
<i>Phragmocephala</i> E.W. Mason & S. Hughes			<i>Trachycarpus fortunei</i>	Taylor and Hyde, 2003
<i>Phragmocephala atra</i>			<i>Trachycarpus fortunei</i>	Taylor and Hyde, 2003
<i>Phragmospathula</i> Subram. & N.G. Nair			<i>Phoenix</i> sp.	Yanna, 2001
<i>Phragmospathula phoenicis</i>			<i>Phoenix canariensis</i>	Taylor and Hyde, 2003
<i>Phyllosticta</i> Pers.			<i>Phoenix canariensis</i>	Yanna, 2001
<i>Phyllosticta cocoicola</i>			<i>Phoenix sylvestris</i>	Yanna, 2001
<i>Phyllosticta cocoina</i>			<i>Phoenix dactylifera</i>	Yanna, 2001
<i>Phyllosticta helleborella</i>			<i>Phoenix canariensis</i>	Yanna, 2001
<i>Phyllosticta palmicola</i>			<i>Phoenix roebelenii</i>	Yanna, 2001
<i>Phyllosticta</i> spp.			<i>Phoenix dactylifera</i>	Yanna, 2001
Phymatotrichum Bonord.			<i>Caryota urens</i>	Sarapat, 2004
<i>Phymatotrichum omnivorum</i>			<i>Pinanga dicksonii</i>	Sarapat, 2004
Physalidium Mosca			<i>Archontophoenix alexandrae</i>	Taylor and Hyde, 2003
<i>Physalidium elegans</i>			<i>Cocos nucifera</i>	Taylor and Hyde, 2003
Piricauda Bubák			<i>Phoenix</i> sp.	Taylor and Hyde, 2003;
<i>Piricauda cochinesis</i>			<i>Arenga engleri</i>	Yanna, 2001
Yanna, 2001			<i>Arenga</i> sp.	Yanna, 2001
<i>Piricauda taiwanensis</i>			<i>Oncosperma</i> sp.	Yanna, 2001
Pirostoma (Fr.) Fockel			<i>Trachycarpus fortunei</i>	Taylor and Hyde, 2003
<i>Pirostoma arengae</i>			<i>Cocos nucifera</i>	Taylor and Hyde, 2003
Pithomyces Berk. & Broome			<i>Calamus</i> sp.	Pinnoi <i>et al.</i> , 2009
<i>Pithomyces flavus</i>			<i>Nypa fruticans</i>	Pilantanapak, 2003
<i>Pithomyces maydicus</i>				
<i>Pithomyces sacchari</i>				
<i>Pithomyces</i> sp.				
Plectophomella Moesz				
<i>Plectophomella nypae</i>				
Pleurophragmium Costantin				

Fungus	Family	Order	Host	Note
<i>Pleurophragmium</i> spp.			<i>Eleiodoxa conferta</i>	Pinnoi <i>et al.</i> , 2006
<i>Pleurophragmium taiwanense</i>			<i>Arenga engleri</i>	Yanna, 2001
<i>Podosporium Schwein.</i>				
<i>Podosporium biseptatum</i>			<i>Cocos nucifera</i>	Taylor and Hyde, 2003
<i>Polydesmus Mont.</i>				
<i>Polydesmus</i> sp.			<i>Oncosperma horridum</i>	Yanna, 2001
<i>Polytretophora Mercado</i>			<i>Licuala paludosa</i>	Sarapat, 2004
<i>Polytretophora calcarata</i>			<i>Archontophoenix alexandrae</i>	Taylor and Hyde, 2003
<i>Pseudorobillarda M. Morelet</i>			<i>Licuala longiclycata</i>	Pinruan <i>et al.</i> , 2007
<i>Pseudorobillarda sojajae</i>			<i>Trachycarpus fortunei</i>	Taylor and Hyde, 2003
			<i>Archontophoenix alexandrae</i>	Taylor and Hyde, 2003
			<i>Trachycarpus fortunei</i>	Taylor and Hyde, 2003
<i>Pseudospiropes M.B. Ellis</i>				
<i>Pseudospiropes</i> sp.			<i>Caryota urens</i>	Sarapat, 2004
			<i>Daemonorops angustifolia</i>	Sarapat, 2004
<i>Ramichloridium Stahel ex de Hoog</i>				
<i>Ramichloridium apiculatum</i>			<i>Cocos nucifera</i>	Taylor and Hyde, 2003
<i>Rhizoctonia DC.</i>				
<i>Rhizoctonia solani</i>			<i>Phoenix canariensis</i>	Yanna, 2001
			<i>Phoenix reclinata</i>	Yanna, 2001
			<i>Phoenix roebelenii</i>	Yanna, 2001
<i>Rhombostilbella Zimm.</i>			<i>Areca catechu</i>	Sarapat, 2004
<i>Rhombostilbella rosea</i>				
<i>Sarocladium W. Gams & D. Hawksw.</i>				
<i>Septomyrothecium Matsush.</i>				
<i>Septomyrothecium</i> spp.			<i>Eleiodoxa conferta</i>	Pinnoi <i>et al.</i> , 2006
<i>Septonema Corda</i>				
<i>Septonema secedens</i>			<i>Caryota urens</i>	Sarapat, 2004
			<i>Pinanga dicksonii</i>	Sarapat, 2004
			<i>Phoenix roebelenii</i>	Yanna, 2001

Fungus	Family	Order	Host	Note
Septoriella Oudem.			<i>Trachycarpus fortunei</i>	Taylor and Hyde, 2003
<i>Septoriella trachycarpi</i>			<i>Trachycarpus fortunei</i>	Taylor and Hyde, 2003
<i>Septoriella</i> sp.			<i>Trachycarpus fortunei</i>	Taylor and Hyde, 2003
Solheimia E.F. Morris				
<i>Solheimia costaspore</i>			<i>Areca catechu</i>	Sarapat, 2004
			<i>Areca triandra</i>	Sarapat, 2004
			<i>Licuala longicarycata</i>	Pinruan <i>et al.</i> , 2007
			<i>Licuala paludosa</i>	Sarapat, 2004
			<i>Metroxylon sagu</i>	Sarapat, 2004
Spadicoides S. Hughes				
<i>Spadicoides klotzchii</i>			<i>Licuala longicarycata</i>	Pinruan <i>et al.</i> , 2007
<i>Spadicoides obovatum</i>			<i>Licuala longicarycata</i>	Pinruan <i>et al.</i> , 2007
<i>Spadicoides</i> spp.			<i>Licuala longicarycata</i>	Pinruan <i>et al.</i> , 2007
			<i>Licuala paludosa</i>	Sarapat, 2004
			<i>Pinanga dicksonii</i>	Sarapat, 2004
Spadicoides stoveri				
Speitropsis Tubaki			<i>Licuala paludosa</i>	Sarapat, 2004
<i>Speitropsis hyalospora</i>			<i>Trachycarpus fortunei</i>	Taylor and Hyde, 2003
Sphaeropsis Sacc.				
<i>Sphaeropsis</i> sp. anamorph of				
<i>Botryosphaeria obtusa</i>				
Spiropes Cif.				
<i>Spiropes</i> sp.				
Sporidesmiella P.M. Kirk				
<i>Sporidesmiella orantopsis</i>			<i>Licuala longicarycata</i>	Pinruan <i>et al.</i> , 2007
Sporidesmium Link				
<i>Sporidesmium altum</i>			<i>Calamus</i> sp.	Pinnoi <i>et al.</i> , 2009
<i>Sporidesmium arengae</i>			<i>Arenga engleri</i>	Yanna, 2001
<i>Sporidesmium harknessii</i>			<i>Daemonorops angustifolia</i>	Sarapat, 2004
			<i>Eleiodoxa conferta</i>	Sarapat, 2004
			<i>Licuala paludosa</i>	Sarapat, 2004
<i>Sporidesmium macrurum</i>				

Fungus	Family	Order	Host	Note
<i>Sporidesmium matsutakashiae</i>			<i>Phoenix canariensis</i>	Yanna, 2001
<i>Sporidesmium minigwlatinosum</i>			<i>Arenga engleri</i>	Yanna, 2001
<i>Sporidesmium nodipes</i>			<i>Eleiodoxa conferta</i>	Sarapat, 2004
			<i>Metroxylon sagu</i>	Sarapat, 2004
<i>Sporidesmium</i> spp.			<i>Calamus</i> sp.	Pinnoi <i>et al.</i> , 2009
			<i>Eleiodoxa conferta</i>	Pinnoi <i>et al.</i> , 2006
<i>Sporidesmium tropicale</i>			<i>Phoenix dactylifera</i>	Yanna, 2001
<i>Sporidesmium turcomanicum</i>			<i>Arenga engleri</i>	Yanna, 2001
<i>Sporidesmium vagum</i>			<i>Phoenix dactylifera</i>	Yanna, 2001
<i>Sporidesmium valdivianum</i>			<i>Trachycarpus fortunei</i>	Taylor and Hyde, 2003
Sporoschisma Berk. & Broome				
<i>Sporoschisma saccardoii</i>			<i>Arenga engleri</i>	Yanna, 2001
<i>Sporoschisma</i> sp.			<i>Calamus</i> sp.	Pinnoi <i>et al.</i> , 2009
Sporostachys Sacc.				
<i>Sporostachys anceps</i>			<i>Arenga pinnata</i>	Yanna, 2001
<i>Sporostachys maxima</i>			<i>Arenga pinnata</i>	Yanna, 2001
			<i>Arenga</i> sp.	Yanna, 2001
Stachybotrys Corda				
<i>Stachybotrys albipes</i>			<i>Eleiodoxa conferta</i>	Pinnoi <i>et al.</i> , 2006
<i>Stachybotrys atra</i>			<i>Phoenix dactylifera</i>	Yanna, 2001
<i>Stachybotrys bambusicola</i>			<i>Licuala longicalycata</i>	Pinruan <i>et al.</i> , 2007
<i>Stachybotrys kampalensis</i>			<i>Archontophoenix alexandrae</i>	Taylor and Hyde, 2003
<i>Stachybotrys palmae</i>			<i>Licuala longicalycata</i>	Pinruan <i>et al.</i> , 2007
<i>Stachybotrys</i> sp.			<i>Areca catechu</i>	Sarapat, 2004
			<i>Calamus siamensis</i>	Sarapat, 2004
			<i>Licuala paludosa</i>	Sarapat, 2004
			<i>Metroxylon sagu</i>	Sarapat, 2004
Stachyliidium Link				
<i>Stachyliidium bicolor</i>			<i>Archontophoenix alexandrae</i>	Taylor and Hyde, 2003
			<i>Calamus siamensis</i>	Sarapat, 2004
			<i>Caryota urens</i>	Sarapat, 2004
			<i>Cocos nucifera</i>	Taylor and Hyde, 2003
			<i>Licuala paludosa</i>	Sarapat, 2004

Fungus	Family	Order	Host	Note
<i>Stagonospora</i> (Sacc.) Sacc.				
<i>Stagonospora kenitiae</i>			<i>Phoenix reclinata</i>	Yanna, 2001
<i>Stemphylium</i> Wallr.			<i>Phoenix</i> sp.	Yanna, 2001
<i>Stemphylium</i> sp.			<i>Phoenix dactylifera</i>	Yanna, 2001
<i>Stictis</i> Pers.			<i>Calamus</i> sp.	Pinnoi <i>et al.</i> , 2009
<i>Stictis</i> spp.			<i>Eleiodoxa conferta</i>	Pinnoi <i>et al.</i> , 2006
<i>Stigmina</i> Sacc.			<i>Phoenix canariensis</i>	Yanna, 2001
<i>Stigmina palmivora</i>			<i>Phoenix dactylifera</i>	Yanna, 2001
			<i>Phoenix reclinata</i>	Yanna, 2001
			<i>Phoenix roebelenii</i>	Yanna, 2001
<i>Tetraploa</i> Berk. & Broome			<i>Areca triandra</i>	Sarapat, 2004
<i>Tetraploa aristata</i>			<i>Phoenix reclinata</i>	Yanna, 2001
<i>Tetraploa</i> cf. <i>aristata</i>			<i>Nypa fruticans</i>	Pilantanapak, 2003
<i>Tetraploa</i> sp.			<i>Calamus</i> sp.	Pinnoi <i>et al.</i> , 2009
<i>Thozetella</i> Kuntze			<i>Trachycarpus fortunei</i>	Taylor and Hyde, 2003
<i>Thozetella cristata</i>			<i>Licuala longicalycata</i>	Pinruan <i>et al.</i> , 2007
<i>Thozetella nivea</i>			<i>Licuala longicalycata</i>	Pinruan <i>et al.</i> , 2007
<i>Thozetella radicata</i>			<i>Calamus</i> sp.	Pinnoi <i>et al.</i> , 2009
<i>Thozetella</i> spp.			<i>Eleiodoxa conferta</i>	Pinnoi <i>et al.</i> , 2006
<i>Torula</i> Pers.			<i>Areca triandra</i>	Sarapat, 2004
<i>Torula graminis</i>			<i>Caryota urens</i>	Sarapat, 2004
			<i>Licuala paludosa</i>	Sarapat, 2004
<i>Torula herbarum</i>			<i>Archontophoenix alexandrae</i>	Taylor and Hyde, 2003
<i>Torula palmigena</i>			<i>Trachycarpus fortunei</i>	Taylor and Hyde, 2003
<i>Tretoccephala</i> Subram.			<i>Phoenix hanceana</i> var. <i>formosana</i>	Yanna, 2001

Fungus	Family	Order	Host	Note
<i>Tretocephala decidua</i>			<i>Oncosperma horridum</i>	Yanna, 2001
Triadelphia Shearer & J.L. Crane				
<i>Triadelphia australiensis</i>			<i>Archontophoenix alexandrae</i>	Taylor and Hyde, 2003
Tricladium Ingold				
<i>Trichocladium alopollonellum</i>			<i>Nypa fruticans</i>	Pilantanapak, 2003
<i>Trichocladium archrasporum</i>			<i>Nypa fruticans</i>	Pilantanapak, 2003
<i>Trichocladium nypae</i>			<i>Nypa fruticans</i>	Pilantanapak, 2003
<i>Tricladium</i> sp.			<i>Metroxylon sagu</i>	Sarapat, 2004
Trichoderma Pers.				
<i>Trichoderma harzianum</i>			<i>Licuala longicalycata</i>	Pinruan <i>et al.</i> , 2007
<i>Trichoderma</i> spp.			<i>Eleiodoxa conferta</i>	Pinnoi <i>et al.</i> , 2006
Trichothecium Link			<i>Trachycarpus fortunei</i>	Taylor and Hyde, 2003
<i>Trichothecium roseum</i>				
Trullula Ces.				
<i>Trullula melanochlora</i>			<i>Phoenix dactylifera</i>	Yanna, 2001
Vanakripa Bhat, W.B. Kendr. & Nag Raj			<i>Trachycarpus fortunei</i>	Taylor and Hyde, 2003
<i>Vanakripa minutilipsoidea</i>				
Veronaea Cif. & Montemart.			<i>Trachycarpus fortunei</i>	Taylor and Hyde, 2003
<i>Veronaea indica</i>				
Verticillium Nees				
<i>Verticillium</i> spp.			<i>Eleiodoxa conferta</i>	Pinnoi <i>et al.</i> , 2006
			<i>Phoenix</i> sp.	Yanna, 2001
			<i>Calamus</i> sp.	Pinnoi <i>et al.</i> , 2009
			<i>Eleiodoxa conferta</i>	Pinnoi <i>et al.</i> , 2006
			<i>Licuala longicalycata</i>	Pinruan <i>et al.</i> , 2007
			<i>Trachycarpus fortunei</i>	Taylor and Hyde, 2003
Virgaria Nees				
<i>Virgaria nigra</i>			<i>Pinanga dicksonii</i>	Sarapat, 2004
Volutella Fr.				
<i>Volutella ramkumarii</i>			<i>Calamus</i> sp.	Pinnoi <i>et al.</i> , 2009
Wardomyces Udagawa & Furuya				
<i>Wardomyces trachycarpicola</i>			<i>Trachycarpus fortunei</i>	Taylor and Hyde, 2003

Fungus	Family	Order	Host	Note
Wiesneriomyces Koord.				
<i>Wiesneriomyces javanicus</i>			<i>Licuala longicalycata</i>	Pinruan <i>et al.</i> , 2007
Xenosporium Penz. & Sacc.			<i>Arenga engleri</i>	Yanna, 2001
<i>Xenosporium berkeleyi</i>			<i>Phoenix dactylifera</i>	Yanna, 2001
Xylohypha (Fr.) E.W. Mason ex Deighton			<i>Eleiodoxa conferta</i>	Pinnoi <i>et al.</i> , 2006
<i>Xylohypha nigrescens</i>			<i>Licuala longicalycata</i>	Pinruan <i>et al.</i> , 2007
Xylomyces Goos, R.D. Brooks & Lamore			<i>Nypa fruticans</i>	Pilantanapak, 2003
<i>Xylomyces aquaticus</i>				
<i>Xylomyces cf. rhizophorae</i>				
Zygosporium Mont.			<i>Archontophoenix alexandrae</i>	Taylor and Hyde, 2003
<i>Zygosporium echinosporium</i>			<i>Archontophoenix alexandrae</i>	Taylor and Hyde, 2003
<i>Zygosporium oscheoides</i>			<i>Arenga engleri</i>	Yanna, 2001
			<i>Livistona</i> sp.	Yanna, 2001
			<i>Trachycarpus fortunei</i>	Taylor and Hyde, 2003

APPENDIX C

Molecular method following Rungjindamai *et al.*, 2008

1. Deoxyribonucleic acid (DNA) extraction

Fungal cultures were inoculated on potato dextrose agar (PDA) for three weeks and then transferred to potato dextrose broth (PDB) at room temperature for one week. Mycelium was filtered and washed with sterilized water. Biomass was frozen and ground into fine powder with mortar and pestle. Genomic DNA was extracted using CTAB method (O' Donnell *et al.*, 1997) with some modification.

2. Polymerase chain reaction (PCR) amplification

Partial large subunit (LSU) and complete internal transcribed spacer (ITS) were amplified with fungal specific primer: LROR, LR7 and ITS5, ITS4, respectively (White *et al.*, 1990, Bunyard *et al.*, 1994) using Fermentas, *Taq* DNA Polymerase (recombinant) kit (Fermentas, Ontario, Canada). The PCR amplification cycles were performed following White *et al.* (1990) and Bunyard *et al.* (1994) with a DNA Engine DYAD ALD 1244 Thermocycler (MJ Research, Waltham, MA). Amplified PCR fragments were purified with NucleoSpin Extract DNA purification kit (Macherey-Nagel, Düren, Germany) following the manufacturer's instruction and then sequenced by Macrogen (Seoul, Korea) using the same primers as for amplification.

3. DNA sequence alignment and phylogenetic analysis

LSU and ITS regions were employed to search the closest sequences from the GenBank database (<http://www.ncbi.nlm.nih.gov>) using a BLAST search (Altschul *et al.*, 1990). The LSU region was initially blasted in order to determine the familial and ordinal level. The phylogenetic construction of LSU sequence was performed based on the study of Moncalvo *et al.* (2002) and Hibbett *et al.* (2007). Further LSU sequences from different major classes, orders and families of the Agaricomycete were included in data matrix. The ITS region was used to clarify the generic and species level of the isolates. Our endophytic sequences were compared with relatedness from BLAST search. DNA sequences were multiple aligned using Clustal W 1.6 (Thompson *et al.*, 1994) and adjusted manually to maximize alignment using BioEdit 7.5.0.3 (Hall, 2006).

The aligned dataset was subsequently analysed using MP in PAUP* 4.0b10 (Swofford, 2002), for the most parsimonious trees (MPTs). Heuristic searches algorithm with tree-bisection-reconnection (TBR) branch swapping, 100 replicates of random stepwise sequence addition, were performed. Gaps were treated as missing data and given equal weight. The tree length, consistency indices (CI) and retention indices (RI) were calculated for each tree generated. The Kishino-Hasegawa (K-H) test was used for estimation of the best tree topology (Kishino and Hasegawa, 1989).

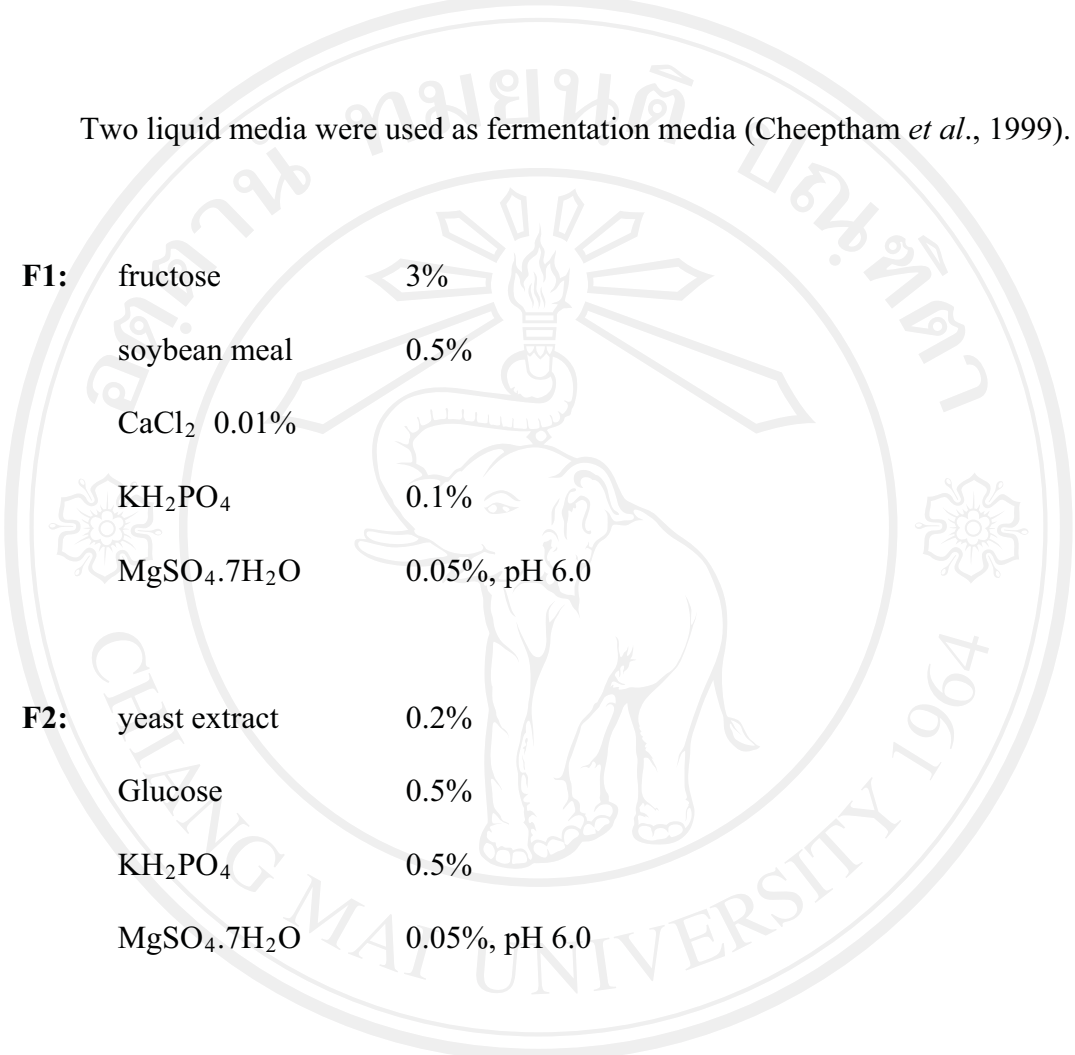
Bayesian phylogenetic inference was calculated with MrBayes 3.0b4 with general time reversible (GTR) model of DNA substitution and a gamma distribution rate variation across sites (Huelsenbeck and Ronquist, 2001). Four Markov chains were run from random starting trees for 5 M generations and sampled every 100

generations. The first 500K generations were discarded as burn-in of the chain. A majority rule consensus tree of all remaining trees was calculated.

Statistical support for the internal branches was estimated by bootstrapping analysis (Felsenstein, 1985) with 1K replications (ten replicates of random stepwise sequence addition, TBR branch swapping) and PP were performed. The MP BS values ($\geq 50\%$) and Bayesian PPs (≥ 0.95) are shown above and below the tree branches, respectively. The rDNA sequences, consisting of LSU and ITS were submitted into the GenBank database. The accession numbers for all sequences derived from the GenBank database are included in the phylogenetic trees.

APPENDIX D

Two liquid media were used as fermentation media (Cheeptham *et al.*, 1999).

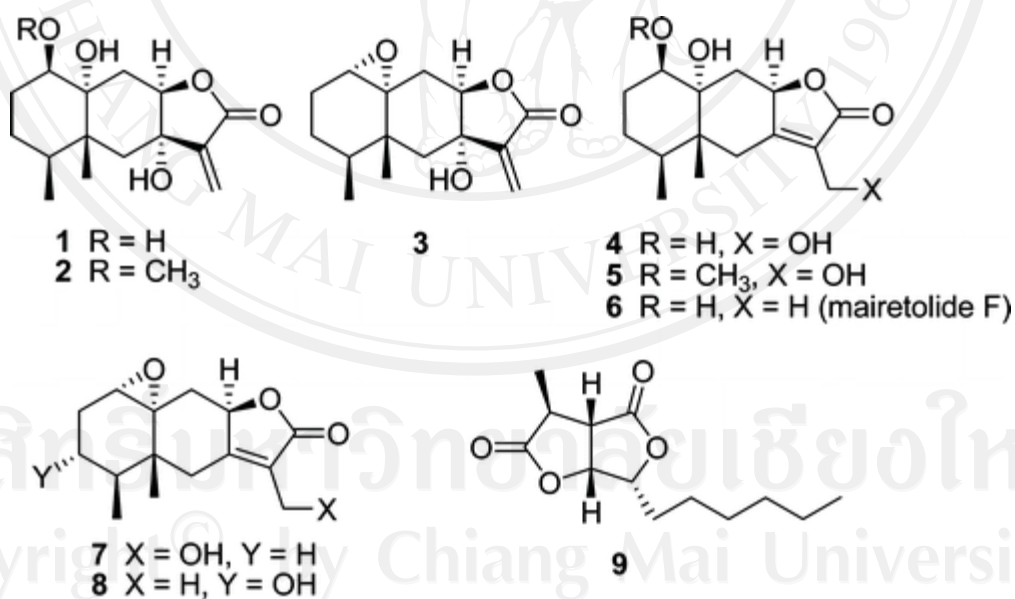


F1:	fructose	3%
	soybean meal	0.5%
	CaCl ₂	0.01%
	KH ₂ PO ₄	0.1%
	MgSO ₄ .7H ₂ O	0.05%, pH 6.0
F2:	yeast extract	0.2%
	Glucose	0.5%
	KH ₂ PO ₄	0.5%
	MgSO ₄ .7H ₂ O	0.05%, pH 6.0

APPENDIX E

New bioactive compounds found from endophytic fungi on palm.

Bioactive compound	Taxa	References
Eremophilane-Type Sesquiterpenes	Endophytic fungi (BCC 21097), isolated from <i>Licuala spinosa</i>	Isaka <i>et al.</i> (2010)



The structures of the new compounds, new eremophilane-type sesquiterpenoids (1–5, 7, and 8), the known mairitolide F (6), and a new furofurandione (9)

CURRICULUM VITAE

NAME Ms. Umpava Pinruan

DATE OF BIRTH 28 July 1978

QUALIFICATIONS

1997–2001 Bachelor of Science (Agricultural) Chiang Mai University, Thailand

2001–2004 Master degree (Biotechnology) Chiang Mai University, Thailand

EMPLOYMENTS

2001–Present Researcher Assistant, National Center for Genetic Engineering and Biotechnology, National Science and Technology Development Agency, Pathum Thani, Thailand.

RESEARCH IN B.S.

This research was studying the biodiversity of endophytic fungi in *Shyonaka*, *Oroxylum indicum* Vent. in Chiang Mai and Chiang Rai. The endophytic fungi were collected and isolated from above plants. The isolates were test against *Colletotrichum capsici* which is a pathogen of *Capsicum*. This studied found some very interesting results with having biotechnological potential.

RESEARCH IN M.S.

This research is studying in fungal diversity on the Palm *Licuala longecalycata* in Sirindhorn Peat Swamp Forest, Narathiwat Province, Southern

Thailand and amylase and protease enzymes production by these fungi. This study focuses on saprobic fungi. They were collected and isolated in axenic cultures and used for testing productivity of enzymes amylase and protease.

RESEARCH OUTPUT

PUBLICATION:

JOURNAL PAPERS

1. **Pinruan, U.**, Rungjindamai, N., Sakayaroj, J., Lumyong, S., Hyde, K.D. and Jones, E.B.G. (2010). *Baipadsphaeria* gen. nov., a new freshwater ascomycete (Hypocreales, Sordariomycetes) from decaying palm leaves in Thailand. *Mycosphere* 1: 53–63.
2. Isaka, M., Chinthanom, P., Boonruangprapa, T., Rungjindamai, N. and **Pinruan, U.** (2010). Eremophilane-Type Sesquiterpenes from the Fungus *Xylaria* sp. BCC 21097. *Journal of Natural Products* 73: 683–687.
3. **Pinruan, U.**, Rungjindamai, N., Choeyklin, R., Lumyong, S., Hyde, K.D. and Jones, E.B.G. (2009). Occurrence and diversity of basidiomycetous endophytes from the oil palm, *Elaeis guineensis* in Thailand. *Fungal Diversity* 41: 71–88.
4. Rungjindamai, N., **Pinruan, U.**, Choeyklin, R., Hattori, T., and Jones, E.B.G. (2008). Molecular characterization of basidiomycetous endophytes isolated from leaves, rachis and petioles of the oil palm, *Elaeis guineensis*, in Thailand. *Fungal Diversity* 33: 139–161.

5. Jones, E.B.G., Stanley, S.J. and **Pinruan, U.** (2008). Marine endophytes sources of new chemical natural products: a review. *Botanica Marina* 51: 163–170.
6. **Pinruan, U.**, Sakayaroj, J., Hyde, K.D. and Jones, E.B.G. (2007). *Thailandiomyces bisetulosus* gen. et. sp. nov. (Diaporthales, Sordariomycetidae) and its anamorph *Craspedodidymum*, is described based on nuclear SSU and LSU rDNA sequences. *Fungal Diversity* 29: 89-98.
7. **Pinruan, U.**, Lumyong, S., Hyde, K.D., and Jones, E.B.G. (2007). Occurrence of fungi on tissues of the peatswamp palm *Licuala longecalycata*. *Fungal Diversity* 25: 157-273.
8. **Pinruan, U.**, McKenzie, E.H.C., Jones, E.B.G., and Hyde, K.D. (2004). Two new species of *Stachybotrys*, and a key to the genus. *Fungal Diversity* 17: 147–157.
9. **Pinruan, U.**, Sakayaroj, J., Hyde, K.D., and Jones, E.B.G. (2004). *Flammispora* gen. nov., a new freshwater ascomycete from decaying palm leaves. *Studies in Mycology* 50: 381–386.
10. **Pinruan, U.**, Sakayaroj, J., Hyde, K.D., and Jones, E.B.G. (2004). Aquatic fungi from peat swamp palm: *Phruensis brunneispora* and its hyphomycete anamorph. *Mycologia* 96: 1161–1168.
11. Pinnoi, A., **Pinruan, U.**, Hyde, K.D. and Lumyong, S. (2004). *Submersisphaeria palmae* sp. nov. and key to the genus and notes on *Helicoubisia*. *Sydowia* 56: 72–78.

12. **Pinruan, U.**, Lumyong, S., McKenzie, E.H.C., Jones, E.B.G., and Hyde, K.D. (2004). Three new species of *Craspedodidymum* from palm in Thailand. *Mycoscience* 45: 177–180.
13. **Pinruan, U.**, E.B.G., Jones, and Hyde, K.D. (2002). Aquatic fungi from peat swamp palm: *Jahnula appendiculata* sp. nov. *Sydowia* 54: 242–247.

BOOK CHAPTER

1. Pinnoi, A., **Pinruan, U.**, Hyde, K.D., Lumyong, S., and Jones, E.B.G. (2004). Palm Fungi. In E.B.G. Jones, M. Tanticharoen and K.D. Hyde (Eds.), *Thai Fungal Diversity* (pp. 181–187). Thailand, BIOTEC.

PUBLICATIONS

1. **Pinruan, U.**, Rungjindamai, N., Choeyklin, R., Lumyong, S., Hyde, K.D. and Jones, E.B.G. (2009). Occurrence and diversity of basidiomycetous endophytes from the oil palm, *Elaeis guineensis* in Thailand. *Fungal Diversity* 41: 71-88.
2. **Pinruan, U.**, Rungjindamai, N., Sakayaroj, J., Lumyong, S., Hyde, K.D. and Jones, E.B.G. (2010). *Baipadsphaeria* gen. nov., a new freshwater ascomycete (Hypocreales, Sordariomycetes) from decaying palm leaves in Thailand. *Mycosphere* 1: 53-63.