

[View this email in your browser](#)

HARDWARE APPLIED SERVICES

Gailan Ngan and Peter Scherrer
at Hardware Applied Services

&

Dawn Cerny and Steven Brekelmans
at Cider Gallery
July 21 - Sept 20, 2019

Opening reception Sunday, July 21, 3-5pm



Gailan Ngan, *Progressive Damage*, 2019, Clay, slips, glazes, lustre

Hardware Applied Services is thrilled to present the works of **Gailan Ngan** and **Peter Scherrer**, two artists whose practices explore the sublime mysteries of the natural world. Immersed in the artists' deep connection to the environment, these works dive into organic and process based subversions of their mediums.

Simultaneously Cider Gallery, our project at Bellingham Cider Co. will present new works on paper by **Dawn Cerny** and **Steven Brekelmans**. Cerny and Brekelman's work will be on view through the end of September.

Please join us and all four artists at our downtown Bellingham gallery for an opening reception this Sunday, July 21 from 3-5pm.

Utilizing a wide-range of ceramic materials and glazing techniques, **Gailan Ngan's** vessels blur the boundary between functionality and aesthetic value. Her whimsical objects exist at the intersection between utilitarian and sculptural bodies, appearing both familiar and otherworldly. Drenched in glaze and embedded with foraged materials, such as clay, rocks, ash, and rare earth metals, Ngan's work emphasizes process, humour, and materiality. The distorted asymmetry of her volumes subtly complicates the work's quotidian purpose, contributing to an organic, playful appearance. **Gailan Ngan** works from Vancouver, Canada, and received her BFA from Emily Carr University in 2002. Her works have been exhibited at the San Diego Art Institute; Centre A: International Centre for Contemporary Asian Art, Vancouver; Nanaimo Art Gallery; Monte Clark Gallery and The Apartment, Vancouver BC. Gailan Ngan is represented by Monte Clark Gallery, Vancouver.



Peter Scherrer, *Hiking at Bogachiel*, 2017, oil on board

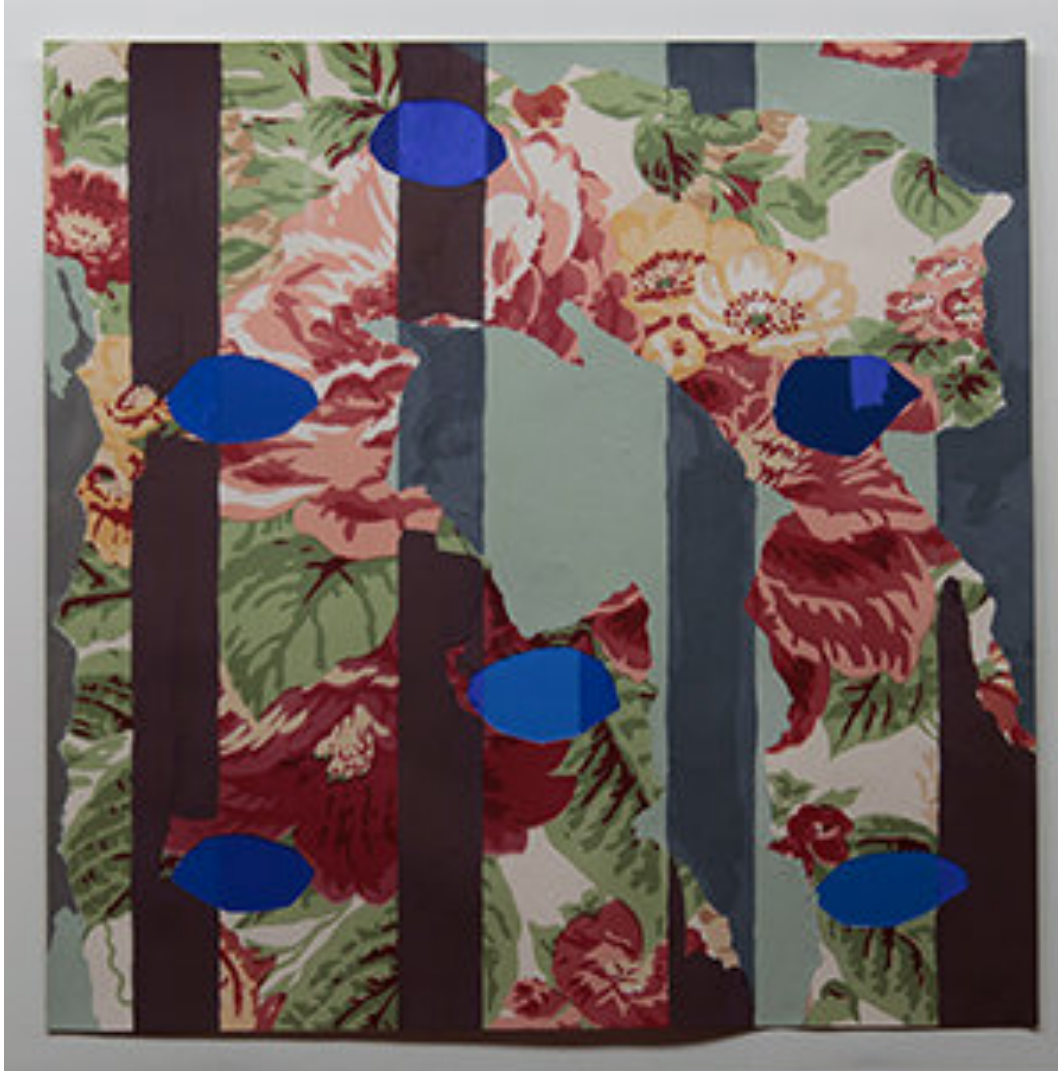
Peter Scherrer's densely layered paintings are lush and luminous, embodying the lived experience of our local landscape. Consolidating a variety of techniques and styles, his work is simultaneously abstract and representational, with animals, plants, and painterly marks combining in thick layers of texture, depth, and narrative. These imagined spaces reflect Scherrer's lifelong connection to the region, experienced through hikes and road trips throughout the Pacific Northwest. In depicting these encounters, Scherrer's work engages with the ambiguity of the environments they imagine to create scenes of dark romanticism that both draw and diverge from tradition. Based in his hometown of

Bellingham, Washington, **Peter Scherrer** received his BFA from the California College of the Arts in Oakland. His work has recently been shown in Seattle at The Specialist and Seasons Gallery, Richard Heller, Los Angeles, and various projects in Miami, Vancouver and the Bay Area.



Steven Brekelmans, *Ashtray, potter's wheel, vase, wine and Spanish wine glasses*, Mixed media on paper

In his latest series of drawings, **Steven Brekelmans** invites play and wonder through unexpected still lives, composed of scattered and seemingly unrelated knick-knacks. These almost alien scenes inspire curiosity and whimsy. Superimposed across these tinkerer's vignettes, mid-century modern geometry invades the whimsical assemblages, furthering the drawings' painterly effects by inserting abstraction amongst the disjointed connections of mundane objects.



Dawn Cerny, 20's era powder room: hand towel

Inspired by vintage wallpapers, **Dawn Cerny's** series of patterned silkscreens muddle the signs of our daily environment with painterly gestures to explore nostalgia through familiar decorative lexicons. Monochromatic silhouettes interrupt the flow of the pattern, starkly contrasting with the intricacies of the designs. Reinterpretation of the familiar motif calls viewers to reflect upon memories now faded with the passage of time. Also presented is a sequence of watercolor renderings of vessels, aqueous bodies rendered in emotive splotches of color.

Please join us this Sunday, July 21, from 3-5pm at 215 W Holly Street, Bellingham, to celebrate these exhibition projects.

Artworks by Gailan Ngan courtesy the artist and Monte Clark Gallery

Copyright © 2019 HARDWARE APPLIED SERVICES, All rights reserved.

Our mailing address is:

215 W Holly St. Suite H-21
Bellingham WA 98225

Want to change how you receive these emails?
You can [update your preferences](#) or [unsubscribe from this list](#).