



PUBLIC SUMMARY
OF THE

FOREST MANAGEMENT PLAN 2022

FBU **ARACRUZ**

PUBLIC SUMMARY OF THE
**FOREST MANAGEMENT
 PLAN 2022**

FBU ARACRUZ

1st EDITION | MAY 2023

SUMMARY

01. ABOUT THE SUMMARY	03	08. SOCIOECONOMIC ASPECTS	21
02. ABOUT SUZANO	05	09. A TIME IMPORTANCE OF PLANTED FORESTS	26
03. WHERE WE ARE	08	10. FOREST MANAGEMENT	30
04. FOREST OPERATION AREA	11	11. ENVIRONMENTAL MANAGEMENT	37
05. FOREST CERTIFICATION	13	12. VALACKNOWLEDGEMENT OF AND RESPECT FOR OUR PROFESSIONALS	52
06. FORESTRY BUSINESS UNIT ARACRUZ	15	13. SOCIAL MANAGEMENT	56
07. ENVIRONMENTAL ASPECTS	18	14. COMMUNICATION WITH STAKEHOLDERS	73

PROCEEDINGS

Every year, Suzano S.A. prepares its Forest Management Plan for the regions where it operates based on data from the previous year and according to results for monitoring and control or significant changes in forestry operations, responsibilities and socioeconomic or environmental conditions.

Cover

Crested capuchin
(Sapajus robustus)

Images

Suzano's archives



ABOUT THE SUMMARY

01 ABOUT THE SUMMARY

In this public summary of the Forest Management Plan, Suzano S.A. presents information on the forestry activities in the region, including responsibilities, available resources and strategies used in the adoption of responsible forest management focusing on sustainable development.

It is a synthesis of the Forest Management Plan based on the main forest certifications: FSC® – Forest Stewardship Council®, FSC-STD-BRA-01-2014 V1-1 PT FSC and NBR 14.789:2012 CERFLOR (Forest Certification). Each system has its own principles and criteria.

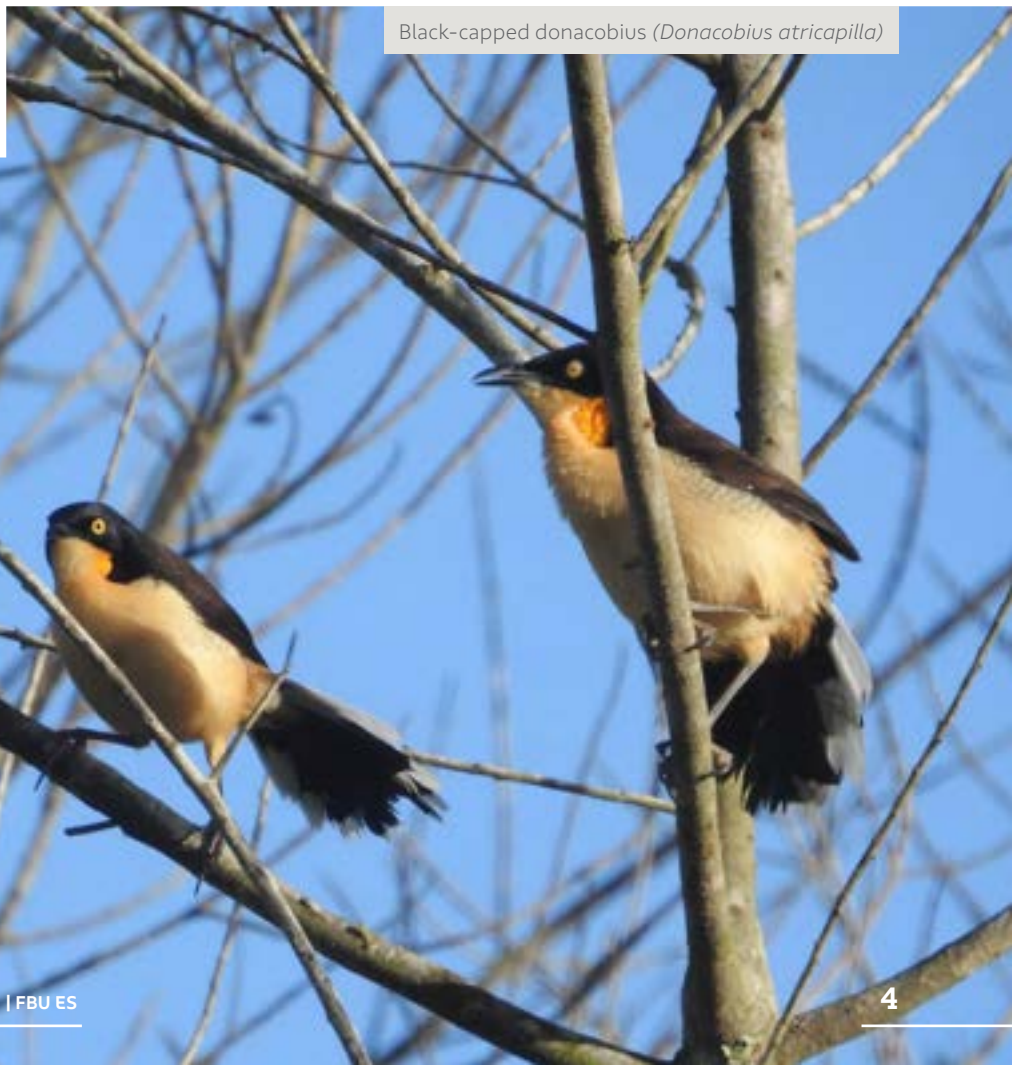
Suzano S.A.'s Forest Business Units (FBU) under the scope of the forest certifications are licensed under the following codes: FSC-C009927 , FSC-C100704 , FSC-C110130, FSC-C155943 and FSC-C118283.

In addition to the printed version, the Public Summary of the Forest Management Plan is emailed to the Company's main stakeholders: Society, public authorities, neighbors and communities located in its areas of operation, as well as employees and vendors.

Have a pleasant reading!

Additional information, questions, feedback and suggestions that may arise from this reading should be sent to: suzanoresponde@suzano.com.br or calling: **0800 022 1727**

Black-capped donacobius (*Donacobius atricapilla*)



ABOUT SUZANO S.a.

02 ABOUT SUZANO S.a.

Suzano is a global reference for the development of sustainable and innovative solutions from renewable sources and is committed to renewing life from trees.

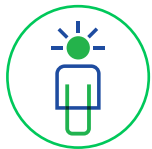
World leader in the manufacturing of eucalyptus pulp and one of the major manufacturers of paper in Latin America, Suzano exports to over 100 countries and its products are part of the lives of more than 2 billion people. With eleven operating plants and the joint operation Veracel, its installed capacity is 10.9 million tons of market pulp and 1.4 million tons of paper per year

Suzano has approximately 40 thousand direct and indirect collaborators and has been investing in innovative solutions in eucalyptus crops to allow the replacement of fossil fuels by raw materials from renewable sources. The company has the highest degrees of Corporate Governance with B3, in Brazil, and New York Stock Exchange (NYSE), in the USA - stocks where its shares are traded.

We plant and grow trees. We transform this renewable raw material into innovative and sustainable bioproducts that are part of your daily life.



White-chinned sapphire (*Chlorestes cyanus*)



PEOPLE WHO INSPIRE AND TRANSFORM



WE CREATE AND SHARE VALUE



IT'S ONLY GOOD FOR US IF IT'S GOOD FOR THE WORLD

Renewing life from trees. This is our purpose. We need to renew our ways of producing, consuming, distributing value, and relating with nature. Each eucalyptus seedling carries solutions for sustainable and innovative ideas for society.

For Suzano, trees are a symbol of renovation. With them, we plant a future of innovation and sustainability. This is what we call “innovability”. We believe that trees are the basis for it and that our crops can generate renewable inputs for several businesses. That’s how we evolve more and more.

We operate responsibly based on our expertise in eucalyptus crops. This means that we always use the best management practices in cropping - that is how we contribute for the maintenance of fertility and protection against erosion and degradation.

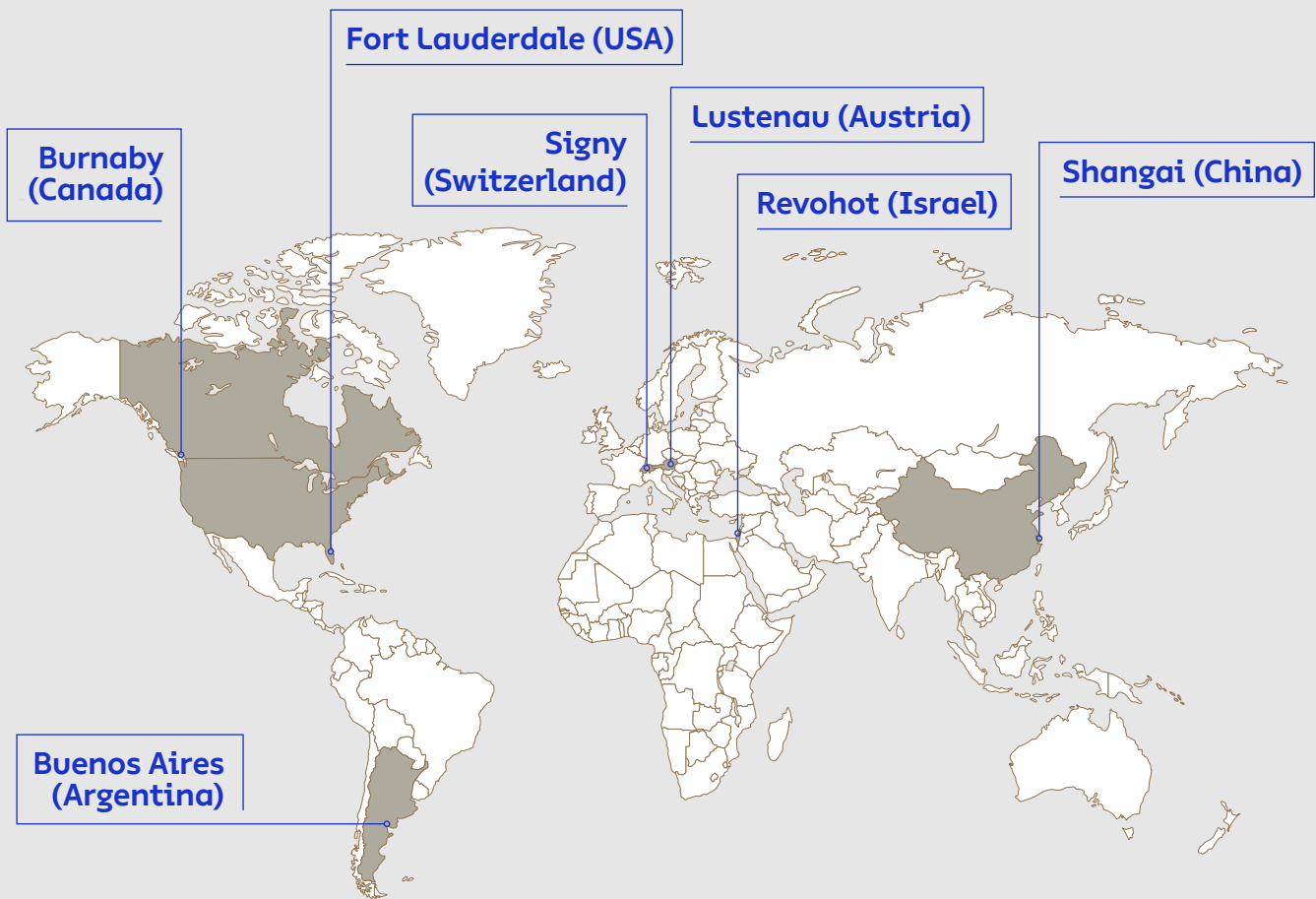
03

WHERE WE ARE

03 WHERE WE ARE

We have business offices abroad in Argentina, Austria, Canada, China, USA, Finland, Israel and Switzerland.

Business Offices



Distribution Centers

United States (4)

Europe (6)

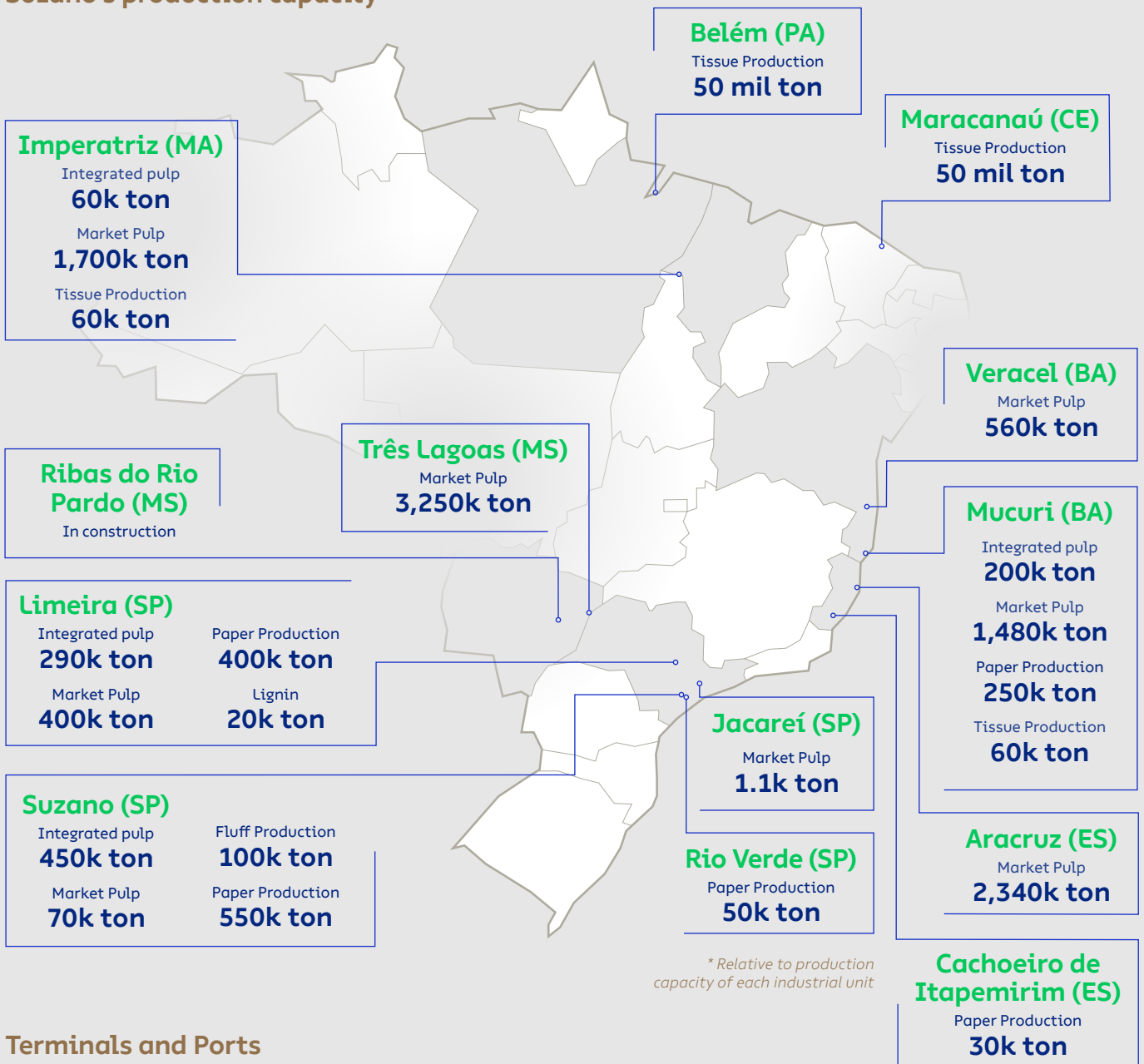
Asia (2)



Our organization includes administrative offices in Salvador (state of Bahia) and São Paulo (state of São Paulo), industrial plants and FuturaGene, which is responsible for the genetic development of forest crops and biofuels, with research laboratories in Israel and China. In 2021, Suzano started building a new plant in the municipality of Ribas do Rio Pardo, MS.

We provide products and services from 1.4 million hectares of planted forests and 1 thousand hectares of preserved forests in the states of Bahia, Espírito Santo, Minas Gerais, São Paulo, Mato Grosso do Sul, Maranhão, Tocantins, Para and Piauí.

Suzano's production capacity



Terminals and Ports

- Belmonte (BA)
- São Luís (MA)
- Santos (SP)
- Aracruz (ES)

04



FOREST OPERATION area

04 FOREST OPERATION AREA

Forest assets with certification

Suzano's forest competitiveness ensures its operation in different regions with adequate productivity.

OWNED AND LEASED AREAS AND PARTNERSHIPS

Business unit	Total Crop area (ha)	Preservation area (ha)	Infrastructure (ha)	Total (ha)
Aracruz/Mucuri	392,157.32	295,231.28	28,295.46	715,684.06
Imperatriz	219,367.39	296,976.01	18,055.49	534,398.89
Limeira/Suzano/Jacareí	219,794.69	133,534.72	16,588.59	369,918.00
Três Lagoas / Cerrado	293,342.61	143,129.82	163,524.23	599,996.66
Total	1,124,662.01	868,871.83	226,463.77	2,219,997.61

Data relative to May/2022

FOREST AREAS WITHIN THE SCOPE OF FSC® AND CERFLOR CERTIFICATIONS FOR EACH FOREST BUSINESS UNITS - FBU

FBU	Certified areas FSC® and PEFC (ha)
FBU BA	338,014.74
FBU ES	233,202.94
FBU MA	487,011.02
FBU SP	348,341.16
FBU MS	436,702.57
Suzano S.A. Total	1,843,272.42

Data relative to Dec/2022





FOREST CERTIFICATION

05 FOREST CERTIFICATION

Suzano S.A. is committed to its goal of guiding its Forest Management system according to the Principles and Criteria set forth by the FSC® Certification and CERFLOR NBR 14.789 Forest Management, aiming to provide long-term business sustainability, continuous improvement of its activities and performance, as well as the adoption of environmentally correct and socially responsible practices.

To this end, the company has incorporated the environmental, social and economic dimensions into its forest management basic guidelines, as follows:

- To seek technological innovations and to support research to apply the best forestry techniques in its forest production units.
- To contribute to the professional development of direct and indirect collaborators.
- To implement the Forest Production Plan based on environmental aspects, such as landscape and microbasins management, monitoring of fauna, maintenance of biodiversity corridors, and compliance with the applicable federal, state and city legislation, as well as international agreements of which Brazil is signatory.
- To contribute to the maintenance or improvement of communities surrounding the forest management units
- Through open dialog channels, participative follow-up of social indicators, sharing of relevant information and promotion of recreation areas or environmental

Timber traceability

Every timber harvested from eucalyptus crops in certified areas have their traceability ensured (stewardship chain of custody), i.e., origin guaranteed from planting to transportation to the industry, thus eliminating the risk of a mix up with logs from uncertified areas (timber controlled by Due Diligence assessment).



SUZANO HAS THE FOREST
CERTIFICATIONS
FSC® AND CERFLOR
(NBR 14.789)





FORESTRY BUSINESS UNIT ARACRUZ

06 FBU es

Suzano ES's forest base is distributed along the states of Espírito Santo (regional Aracruz and São Mateus) and Bahia (areas of Caravelas Florestal incorporated).

FBU ES is responsible for the forest management of the operations encompassing 17 municipalities in Espírito Santo and 4 in Bahia.

Crops are planted in owned lands, leased lands or in partnership with rural producers. With a forest base of 297 thousand hectares, of which 117 thousand hectares are intended for biodiversity conservation (data from December, 2020), Suzano's forest management targets the combination of eucalyptus crops and the conservation of natural resources, technological innovations and respect to communities.

The entire production is based on renewable eucalyptus crops, with the aim of supplying the industrial complex Aracruz - ES, with capacity to produce 2.3 thousand tons of bleached eucalyptus pulp per year.

Aracruz-ES industrial unit operates in compliance with environmental control standards, applying technology aimed at monitoring emissions, air and water quality, and the proper disposal of waste.

The seedlings are created with clonal technology, from a certified partner nursery and hold the most advanced genetic database for the production of pulp.

The harvesting process respects the region characteristics and uses efficient systems that rely on state-of-the-art equipment that enable an efficient, safe and environmentally adequate operation.

To ensure success in all phases of the process, the company constantly invests in research, technology, and professional training. Suzano's practice is to recruit candidates from the regions where it operates, provided that they meet the requirements for the job and apply on equivalent terms with other candidates. It is also the company's practice to train the workforce involving the communities in partnership with universities and technical institutions.

FBU ARACRUZ ENCOMPASSES A FOREST BASE OF **297,946 HA**, OF WHICH, ABOUT **117,866 HA** ARE DESTINED TO CONSERVATION



AREA OF OPERATION PER MUNICIPALITY

State	Municipality	Municipality's area (ha)	Consortium (ha)	Preservation (ha)	Other uses (ha)	Total area of occupancy (ha)	Total area of occupancy (%)
ES	Aracruz	142,029.00	26,081.55	17,289.48	2,746.55	46,117.58	32.47%
ES	Boa Esperança	42,871.60	921.29	1,689.78	102.35	2,713.42	6.33%
BA	Caravelas	237,788.90	3,986.36	1,996.14	273.14	6,255.64	2.63%
ES	Conceição da Barra	118,259.00	45,201.83	20,609.69	2,512.39	68,323.91	57.77%
ES	Ecoporanga	228,537.00	-	995.88	6.79	1,002.67	0.44%
ES	Fundão	28,685.40	651.31	445.66	68.86	1,165.83	4.06%
ES	Ibatiba	24,027.80	-	15.44	4.97	20.41	0.08%
BA	Ibirapua	77,109.80	7,151.38	4,277.14	639.22	12,067.74	15.65%
ES	Jaguaré	65,975.10	3,302.71	1,646.74	315.28	5,264.73	7.98%
ES	Linhares	349,626.00	7,464.92	8,718.63	646.64	16,830.19	4.81%
ES	Montanha	109,906.00	8,543.02	12,339.27	565.45	21,447.74	19.51%
BA	Mucuri	178,762.60	2,090.54	1,518.92	182.19	3,791.65	2.12%
ES	Mucurici	54,052.90	3,521.86	3,382.71	290.22	7,194.79	13.31%
ES	Nova Venécia	143,957.00	132.64	151.24	5.57	289.45	0.20%
BA	Nova Viçosa	131,637.90	1,680.96	740.58	161.72	2,583.26	1.96%
ES	Pedro Canário	43,345.30	2,107.34	1,917.53	190.61	4,215.48	9.73%
ES	Pinheiros	97,313.60	6,326.84	8,575.65	520.03	15,422.52	15.85%
ES	Ponto Belo	36,011.00	-	8,633.84	50.03	8,683.87	24.11%
ES	Rio Bananal	64,192.90	419.33	567.19	38.24	1,024.76	1.60%
ES	Santa Leopoldina	71,832.50	252.88	436.28	46.55	735.71	1.02%
ES	Santa Teresa	68,303.20	-	3.39	1.24	4.63	0.01%
ES	São Mateus	234,605.00	40,726.31	17,643.37	2,663.83	61,033.51	26.02%
ES	Serra	54,763.10	2,416.85	2,371.47	251.27	5,039.59	9.20%
ES	Sooretama	58,703.60	2,797.03	809.32	171.33	3,777.68	6.44%
ES	Vila Valério	47,034.30	1,691.70	1,091.01	156.53	2,939.24	6.25%
Overall Total		2,709,330.50	167,468.65	117,866.35	12,611.00	297,946.00	11.00%

Source: Suzano's database in 12/2022

Area in hectares and municipalities' areas - Source: IBGE

* Other uses correspond to roads, buildings, areas under overhead power lines, etc.



07

ENVIRONMENTAL ASPECTS

07 ENVIRONMENTAL ASPECTS

Forest regions

The forest areas and other native phytophysionomies in FBU ES offer possibilities for the conservation of the regional biodiversity.

We are in the Atlantic Forest domain, that contains broad biodiversity, traditional communities, a rich cultural heritage, tourist sites and water springs.

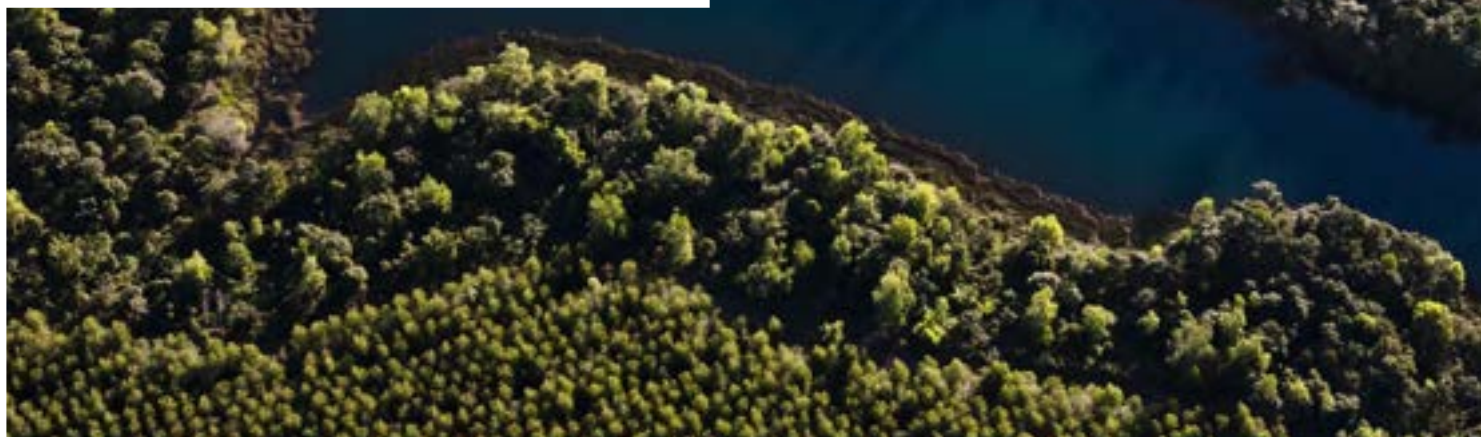
Soil, climate and hydrography

The soil in Aracruz Unit is mostly acid, deep, highly weathered, well drained, low in organic matter, with low fertility, cohesive, resistant to erosion and compaction; very hard when dry and brittle when humid.

According to IBGE (Brazilian Institute of Geography and Statistics), Suzano's crops in Espírito Santo are centered in a region of tropical warm humid and tropical super-humid climate, where the annual average rainfall is between 1,200 and 1,400 mm/year.

In its influence zone, the average temperature is around 24°C and varies up to 5°C between the warmest and coldest months.

The main hydrographic regions of the state of Espírito Santo where Suzano's areas of influence are located are the North Central Coast (basins of the rivers Riacho, Reis Magos, Piraqueaçu and Jacaraípe), Doce river, the affluents of the North and South branches of the São Mateus river, and Itaúnas river.



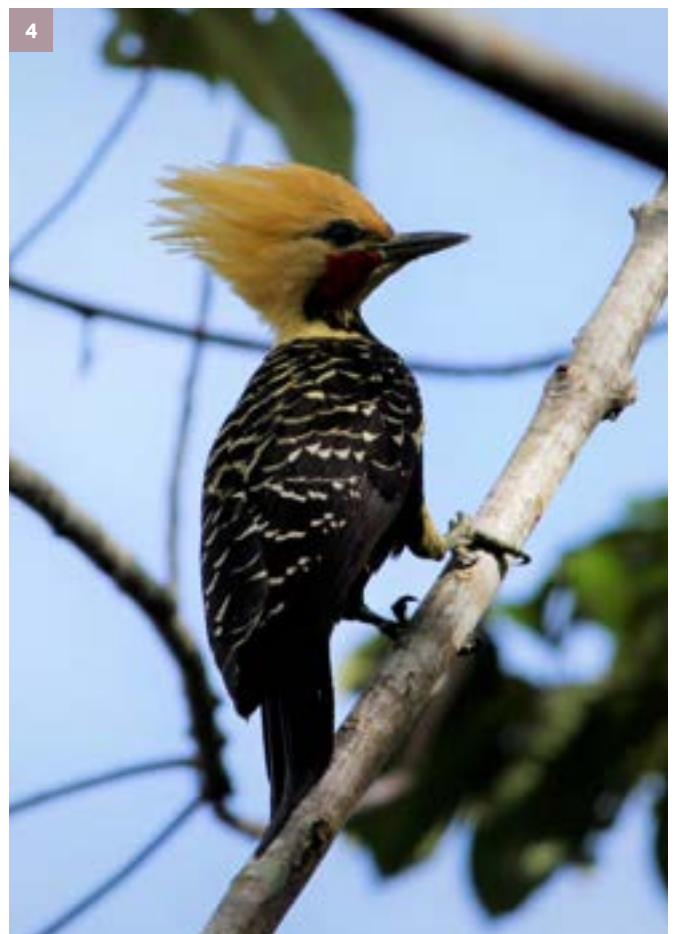
Fauna and Flora

The areas of FBU ES are inserted into different mosaics of forest coverage and house several phytophysionomies of the Atlantic Forest biome.

Generally, our areas encompass forest fragments capable of contributing to the conservation of several species, especially threatened species or endemic to the biome.

The environmental characterization in Suzano's areas of operation is done through the monitoring of the fauna and flora. In a general way, the studies seek to identify, randomly or systemically, the local fauna and flora species, enabling the identification of critical species (protected by law), mapping the habitats of endemic, rare and endangered species, and finding opportunities for more detailed studies, restorative actions aimed at the flora, or improvement of environmental conditions for the fauna.

The campaigns for the monitoring of fauna are carried every three years, while the flora is monitored every four years and it includes expeditions during the dry and rain seasons.



1. White-headed marmoset (*Callithrix geoffroyi*), 2. Margay (*Leopardus wiedii*), 3. Squirrel cuckoo (*Piaya cayana*), 4. Blond-crested woodpecker (*Celeus flavescens*)



SOCIOECONOMIC ASPECTS

08 SOCIOECONOMIC ASPECTS

Forest areas

Characterizing and identifying the main socioeconomic and cultural aspects present in the Forest Centers to support the work of the company in defining the specific strategies in its area of operation.

The Management Unit is situated in an area that includes urbanized municipalities in the metropolitan region of Vitória, important regional centers such as Linhares and São Mateus, and small rural municipalities such as Montanha.

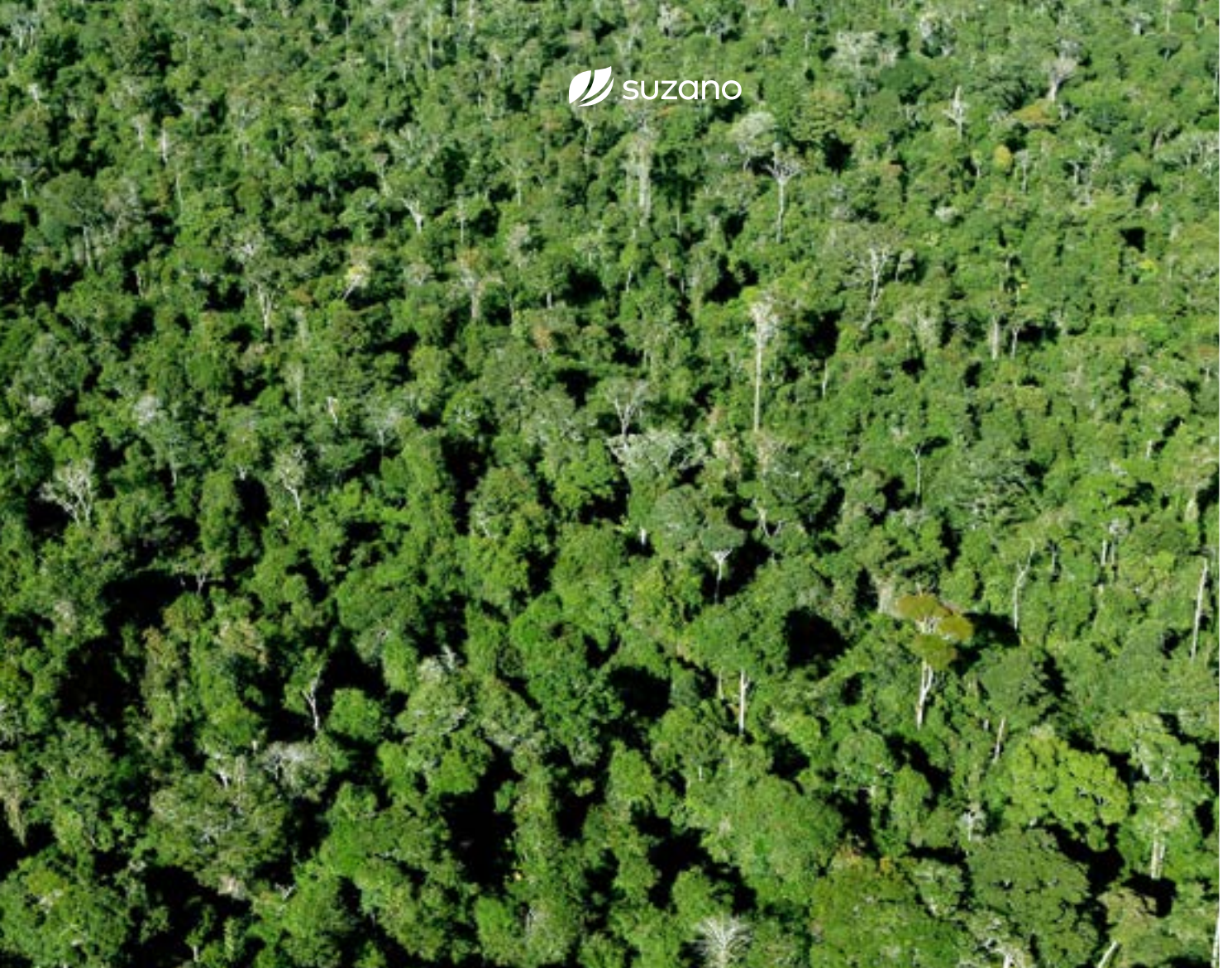
Eucalyptus crops consists of a dynamic activity in the region, being responsible for important socioproductive changes, even though traditional activities such as livestock, subsistence farming and fishing have great importance to the productive structure of the regional economy.

The municipalities Rio Bananal, Vila Valério, Sooretama, Pinheiros, Linhares, Montanha, Nova Venécia, Boa Esperança, Ecoporanga, Ponto Belo, Jaguaré and Mucurici are generally characterized by the dominance of small rural properties occupied by family groups dedicated to food products and traditional commodities (mainly coffee), partners, sharecroppers, tenants, who might complement their income as day laborers in local farms.

Cattle farms and the related cowboy sociability occupy a significant part of the landscape, especially in the north-west part of the state.

The predominant presence of communities descended from African slaves occupies the region in the municipalities of São Mateus and Conceição da Barra. Groups of farmers, groups of cowboys, riverside communities and artisanal fishermen completes the picture of traditional occupation in this region, which has been intensely urbanizing.





The indigenous presence is strong in Aracruz area, encompassing the territories of Tupiniquins and M'bya (Guarani). The region is undergoing an urbanization process.

The immigrant landscape corresponds to the region where European occupation was more intense and whose descendants kept a strong identity connection with their original countries. These are people from Italy, German, Pomerania, Luxembourg, Switzerland and Holland, who occupied mainly the mountain region of the northern and central area of the capital, particularly, in the municipalities of Ibirapu, Santa Teresa and Santa Leopoldina.

The company identifies the social assets by means of tools and procedures to frame the location profiles. These procedures and tools are used to understand and map the main social and economic characteristics of the cities nearby and, in this way, to guarantee a strategic direction for its actions, set forth by the Director of Sustainability planning and priority tools.



Archaeological information

The archaeological sites and locations with significant historical and/or cultural relevance located in the company's areas or surroundings are identified in our cartographic base. Among the main actions performed, we highlight: identifying sites of special historical, archaeological, cultural, ecological, economic or religious significance for the communities and training field staff on archaeological heritage.

Distribution of Suzano's farms, conservation units and management Units for Water Resources

Conservation Units are legally recognized areas, with relevant natural features with the role of securing the representativeness of significant and ecologically viable samples of the different populations, habitats and ecosystems.

The remaining native vegetation and crops have an important role in the set of actions to promote biodiversity conservation locally, regionally or state-wide.

The techniques provided by the company to protect fragments and manage commercial crops have relevant positive effects on the close conservation units since they host important shares of biodiversity and maintain the functionality of key biological and ecological processes.

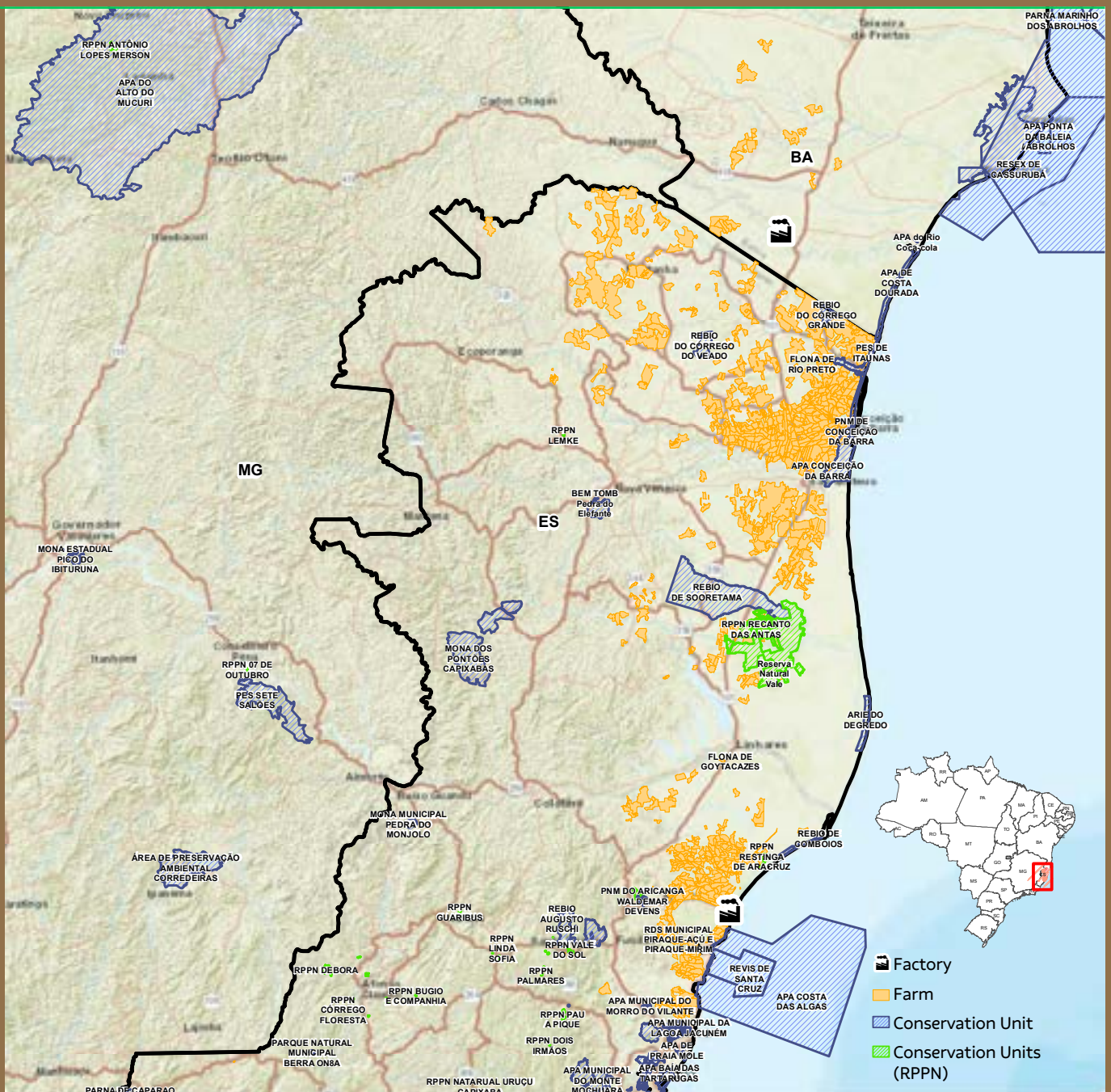
Furthermore, understanding where the company's areas are inserted relative to the river basins helps us to plan new implementation areas, and to maintain existing crops.

The use of water for operational activities is regulated by a state public body which, depending on the water availability of each resource, and the volume required for other users, establishes the maximum amount of water to be used by the company, in order to guarantee the water supply to other users of the basin.



Some adjoining Conservation Units to Suzano ES are the Biological Reserve of **Comboios, Sooretama, Corrego Grande and Corrego do Veado**, the **National Forest of Rio Preto**, and **State Park of Itaunas**.

MAP OF CONSERVATION UNITS FBU ES



09

THE IMPORTANCE OF PLANTED FORESTS

09 THE IMPORTANCE OF PLANTED FORESTS

What is forest management?

Forest Management is the administration of forest resources with the aim of achieving economic and social benefits aligned with the mechanisms for ecosystem support by employing the best practices of Eucalyptus farming. The goal is to reach high productivity in balance with environmental conservation.

Objective

The goal of Suzano’s forest management is to supply the industrial Units with eucalyptus timbers, according to the parameters described in the following, either for short or long terms.

- The goal of Suzano’s forest management is to supply the industrial Units with eucalyptus timbers, according to the parameters described in the following, either for short or long terms.
- Availability and rational use of areas for the cultivation of eucalyptus through directives and procedures for the purchase and lease of land.
- Development of new genetic material and monitoring of soil nutritional levels, pests and others, defined in operational routines and specific research projects.
- Standardization, reporting and continuous improvement of procedures related to seedling production, implementation, restoration, forestry practices, construction and conservation of roads, harvesting, and transportation of forestry products.
- Outlining of programs concerning the environment, healthcare and safety at work, as well as socioenvironmental aspects, always in compliance with the applicable law.



THE EUCALYPTUS

- It is an exotic species (non-native), like coffee, corn, soy and sugar cane and several other crops widely planted throughout the country.
- If managed properly, water consumption is similar to that of native forests and their roots stay away from the water table.
- The eucalyptus takes approximately seven years to harvest and can be cropped in low fertility soils.
- If managed properly, the eucalyptus contributes to the protection and conservation of biodiversity, as observed in the results of biodiversity monitoring in Suzano’s areas.
- It captures carbon dioxide (CO₂) from the atmosphere, thus helping to reduce the effects of climate change and to maintain important environmental services to society, such as water resources.



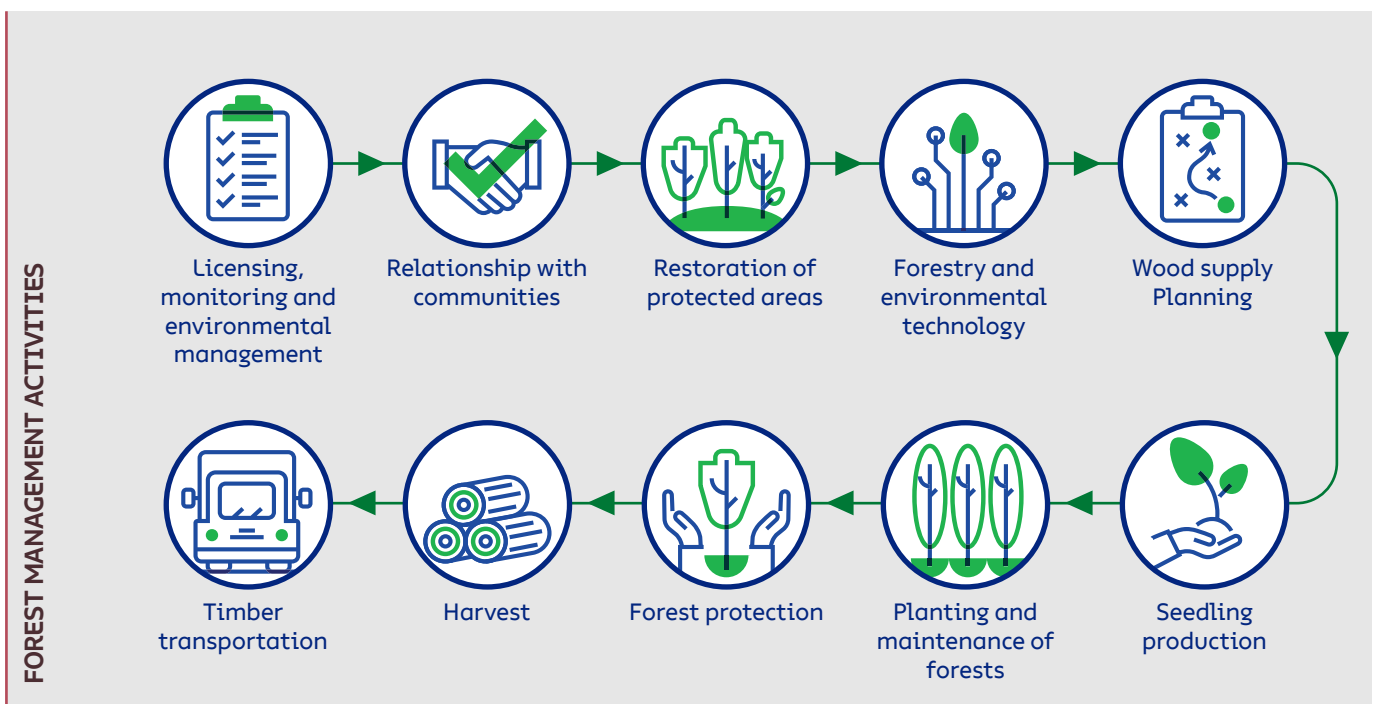
Compliance with the law

Suzano is always up-to-date with the applicable environmental, labor and tax laws with preliminary surveys carried out by an environmental law consulting firm.

Managed forest resources

To supply the demands of the industry for eucalyptus timbers, we rely on crops of the genus *Eucalyptus*, which encompasses more than 600 species that are adapted to many different soil and weather conditions. Eucalyptus originates from Australia and Indonesia. It was chosen due to its higher potential for timber production for pulp when compared with other forestry species and to its adaptability to the environmental conditions in Brazil, including soil and weather.

THE AVERAGE ANNUAL PRODUCTION OF FBU ES IS AROUND **35,22 M³/HA.YEAR**



Technology and innovation

Suzano maintains advanced Technology Centers that develop studies and research on forestry and industry. These activities aim to a consistent enhancement of its operations and technological innovations, focusing on the company's sustainability.



Technology and Innovation works mainly on Genetic Improvement, Genomics, Forest Protection, Forest Management, Ecophysiology and Biotechnology, defining models of planted forest management that support an increase in forest biomass productivity.

Suzano's crops are mostly formed by hybrids obtained from the crossbreeding of *Eucalyptus grandis* and *Eucalyptus urophylla*.

Those species were selected following several cycles of improvement and research because they are better adapted to the local soil and weather conditions. Currently, the tree is harvested in six years in average, varying from five to seven years. After the first harvest, the area is managed for a new planting or for regrowth.

Partnerships

Suzano develops studies and research in collaboration with outstanding public and private institutions in Brazil and abroad. All projects and activities seek to meet market and operational demands, legal requirements, new tendencies, technologies and products of internal research strategies.

As a result, Suzano stands out in developing and recommending new genetic materials, in monitoring and recommending forest management practices and fertilization, in using new technologies in forest protection and more sustainable production practices. In addition to the results highlighted in forestry, Suzano sustains solid and robust results in the development of Research and Development of the industry and new businesses.



MEET OUR PARTNERS IN RESEARCH
AND INNOVATION IN:
[WWW.SUZANO.COM.BR/
G-SUZANO/DOCUMENTOS](http://WWW.SUZANO.COM.BR/G-SUZANO/DOCUMENTOS)

10

FOREST MANAGEMENT

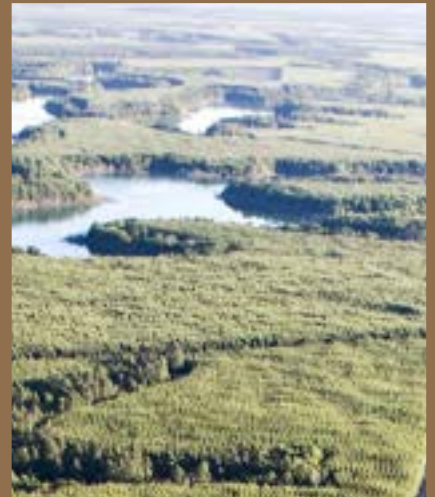
10 FOREST MANAGEMENT

Forest protection

The company continuously monitor for pests, diseases and weed with regular field visits.

The objective is the early detection of pests and weed, and the assessment of the competition level of eucalyptus with weed. The information gathered are used to guide decisions on control and to define the method to be adopted, seeking for the rational use of pesticides.

Suzano also prioritizes the use of biological control agents in occasional pest management, and selection and planting of clones resistant to the main crop diseases, complementing the integrated management.





Forest Inventory

On its first 120 days, the forest is monitored through a Qualitative Inventory that allows inferences on the quality and homogeneity of the crops. In regrowth forests, performance is monitored at 90 and 180 days upon harvesting also through qualitative forest inventory.

The continuous forest inventory uses sampling techniques to gather data that allow an estimate of the planting volume per hectare and per tree for a given age. This information is used in the decision making process on the best harvest time. It is also important for the proper planning of timber supply to the Industrial Unit.

Planning

Planting and harvesting planning for timber supply comprises short, medium and long term achievements, aiming at the best utilization of natural resources and minimizing occasional socioenvironmental impacts. In this way, forest planning keeps track of forest ordering to ensure the industry supply. The proper management of planted forests favors crop productivity and contributes to disease and pest control, biodiversity conservation, and protection of springs and ecosystem services - creating a virtuous cycle.

Operational Excellence

This area studies new technologies focusing in equipment and processes for a continuous improvement of forestry, harvest and logistics activities, working in several fronts such as: Routine management, strategic deployment, education and qualification, innovations, quality program, Digital hub, corporate maintenance and fleet management.

Seedling production

The plant nursery is where the eucalyptus seedlings are produced and managed through several stages until reaching the proper size to be planted in the field.

The seedling development time ranges from 90 to 120 days. To produce seedlings of outstanding quality, the distance between them needs to be increased when they reach 60 days so that they can grow healthier.

Planting

The main activities related to trees planting are: pre-planting mechanized chemical cleaning, mechanized soil tillage, mechanized fertilization, planting, mechanized and semi-mechanized irrigation, and replanting.

Planting can be carried out in reform areas (where an eucalyptus crop already exists), or in implantation areas (where there is no eucalyptus crop). Suzano only implants forest in areas not covered by native forests.

Soil is prepared using minimum tillage, which consists in preparing strips of soil in the planting line. About 70% of the land remains undisturbed, which favors the maintenance of soil characteristics, avoiding erosion and loss of organic matter.

2022, FBU ES ACHIEVED

748 HA
IMPLANTATION

24,841 HA
RESTORATION

3,988 HA
REGROWTH

TOTALING
29,577 HA



Forest Maintenance

This stage consists in a set of activities carried out between planting and harvest (5 to 7 years) to ensure growth and productivity.

The main forest maintenance activities are: manual or mechanical mowing, chemical or mechanical weeding, fertilizing, control of leafcutter ants, prevention of forest fire and diseases and pest control.

Timber transportation

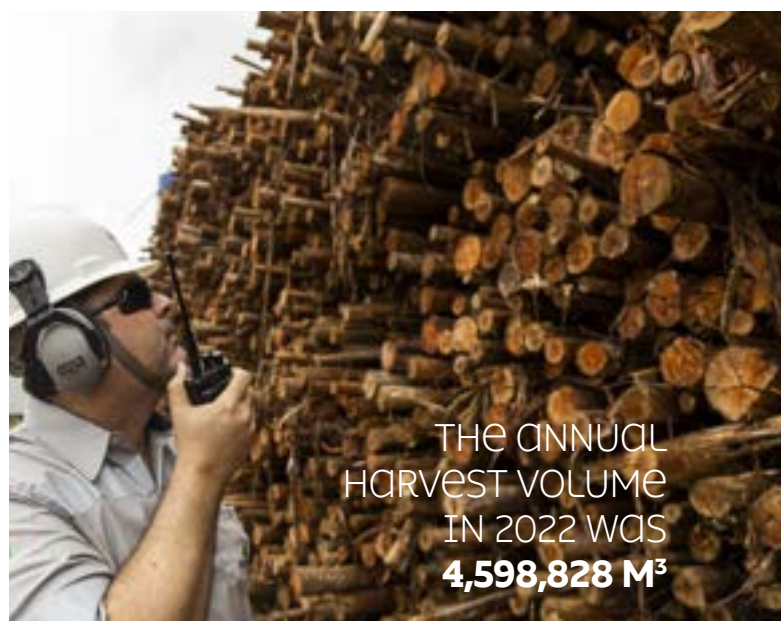
Forest Logistics main responsibility is to transport timbers from the forest areas to the Industrial Units. The harvested timbers are transported according to the Annual Transportation Planning. Once this process is defined, loading, routes and trucks distribution are determined considering the requirements defined on the area's operational procedures.

The routes for timber transportation are defined in agreement with Suzano's Sustainability sector in order to minimize the possible impacts of forestry activities on the neighboring communities.

Harvest

As soon as the forest reaches its ideal point, timbers are harvested to supply the industrial plant. Harvest encompasses all the processes from tree harvest to the disposition of logs (cutting, forwarding, stacking and fueling), up to the point where they can be transported by trucks.

During harvest, eucalyptus trees are cut toward the center of the plot, avoiding any possible damage to the native vegetation.



THE ANNUAL
HARVEST VOLUME
IN 2022 WAS
4,598,828 M³

THE ANNUAL VOLUME OF
TIMBERS TRANSPORTED
TO THE INDUSTRY IN
2022 WAS **5,302,196 M³**



Trucks equipped with telemetry

FBU ES uses precision technology to manage operations. Our fleet is equipped with telemetry to monitor operations, distribution and positioning of the trucks on the company's roads and farms, control of loading and unloading, and to support our partners in the management of operation safety, such as monitoring the drivers working hours and detecting occasional violations of speed limits.

With this system in place, Suzano strengthens the culture of daily routine management with partner companies in logistics operations, thus maximizing personnel safety standards, and operational efficiency based on reliable data.

Road Network - roadways

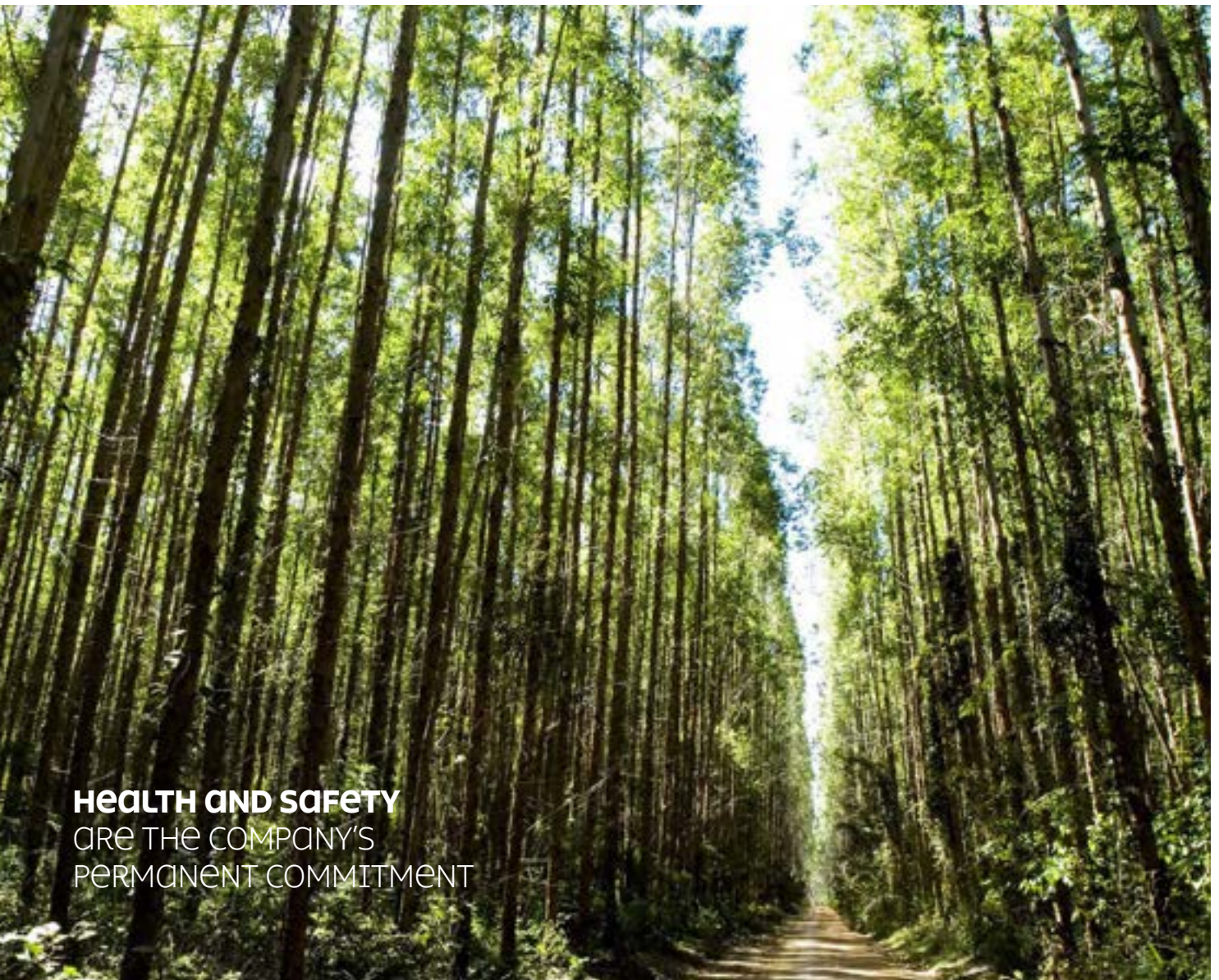
The road network in the forest area comprises municipal and state roads, arterial, collectors and firebreaks, whose maintenance is defined according to the company's internal criteria to secure forestry operations and avoid erosive processes in the conservation areas.

- Drainage structures, such as containment boxes, are built to store rain water and avoid erosion on the roads.
- Existing roads are repaired and new roads can be opened to improve operation quality and safety.
- Firebreaks are kept to secure the access of fire brigade teams.

Road moistening

To keep the road wet during certain earthworks, the company uses a tank truck. The goal is to reduce dust around houses and settlements caused by the traffic of trucks transporting timber to the company.

Health and safety are the company's permanent commitment. Suzano maintains a set of rules that guides its employees and the carriers' employees into safer driving habits, protecting everyone's lives.



HEALTH AND SAFETY
ARE THE COMPANY'S
PERMANENT COMMITMENT



Forest integrity

Suzano’s team of professionals involved in the productive processes of forestry focus largely on prevention and control of wildfires.

That is why the company provides continuous training to its brigade teams that are not only apt to monitor, but also act as support to fight fire in neighboring farms.

Suzano invests in awareness-raising with campaigns that address the dangers of wildfires.

We rely on trained fire brigade teams, trucks and surveillance towers available to respond to any possible fire outbreaks.

Our planted forests and native forest areas are systemically surveyed and any event, whether fire, littering, trespassing, water course obstruction, among others, are monitored and documented.

Cameras	19
Towers	19
Radio repeaters	1
Radios distributed throughout the owned operation	30
Operation radius	Our entire area (with some blind spots) effective 322,000 ha



The program Floresta Viva (Live Forest) aims to raise awareness among collaborators (employees and suppliers), partners and surrounding communities about the impacts and dangers of fire, how to avoid it and how to act when a fire outbreak is spotted.

In addition to that, the program addresses other topics involving environmental education, such as illegal fishing and hunting, disposal of waste and wood theft, relying on channels for incidents reporting.



ENVIRONMENTAL MANAGEMENT

11 ENVIRONMENTAL MANAGEMENT

High Conservation Value Areas

The term High Conservation Value Areas (HCVA) was created along with the standards for the forest management certification and refers to areas with important features for the conservation of biodiversity and to maintain people's quality of life.


Examples are: native forests that house endemic (that can't be found anywhere else) or endangered animals and plants, and forests that provide essential resources for the local population.

Suzano uses this concept to guide its conservation efforts, evaluating the HCVAs present in its areas according to the following attributes: biological, ecological, social or cultural values considered notably meaningful or of extreme importance at the national, regional or global levels. Those are the values that need protection.

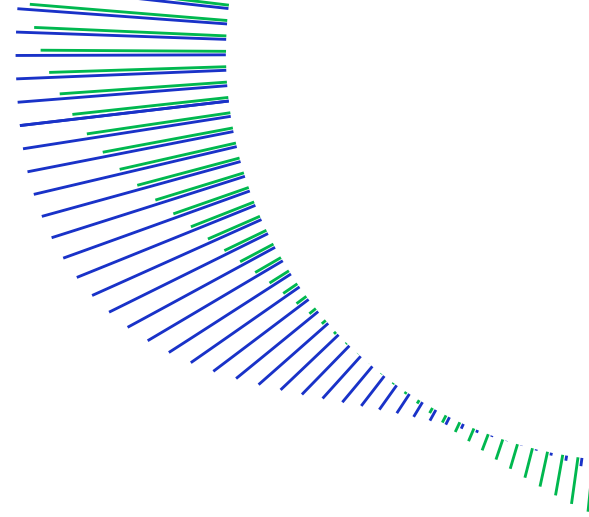
In the first semester of 2021, the FBU adjusted the methodology for the evaluation of HCVA attributes 1 to 4 (environmental attributes), through a corporate technical task group for biodiversity using as reference the criteria adapted from the Guide for Good Practices to evaluate High Conservation Value, developed by the ProForest Network.

This study identified 10 environmental HCVAs in FBU ES, which, along with the social HCVAs, totaled 6.4 hectares. Three new HCVAs were included in the scope: Bugio-Ruivo, Costa Azul and Piraquê-Azul, all of them in the municipality of Aracruz-ES.

During this revision process, Suzano has consulted with stakeholders based on the criteria for the identification of HCVAs aiming to validate the threats defined and the measures of protection, conservation and monitoring for the maintenance of the HCVAs.



10 ENVIRONMENTAL HCVAS
WERE IDENTIFIED
IN FBU ES, TOTALING
6.4 HECTARES, PLUS
4 SOCIAL HCVAS
WITH IMPORTANT VALUE
FOR THE ADJOINING
COMMUNITIES.

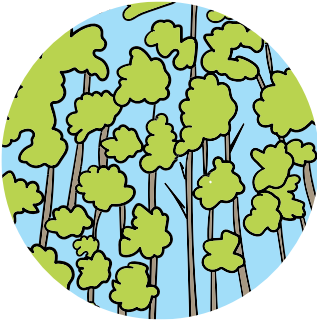


Consultation with stakeholders

Suzano consulted with stakeholders, in accordance to the criteria for HCVAs and SML (Special Meaning Localities), to develop management regimes for the maintenance of HCVAs and SML and assess their efficacy.

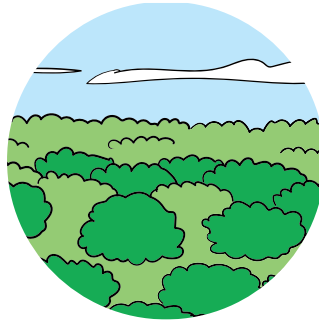
During the development of the diagnosis, researchers and specialists were consulted about the items in their areas of expertise in order to provide Suzano with the security to make decisions about the proper identification and management for HCVAs and SML.

The key to define a given area as HCV is identifying if it fits one or more attributes as described below:



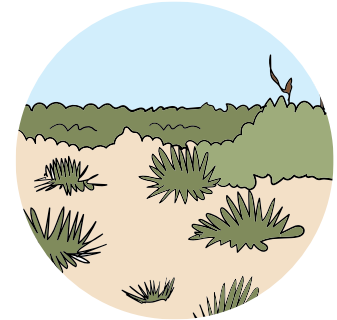
AVC 1

Areas containing significant amount of value for biodiversity.



AVC 2

Extensive and preserved areas of native vegetation, of global, national or regional relevance for biodiversity.



AVC 3

Areas that are inserted in or contain rare, threatened or endangered ecosystems.



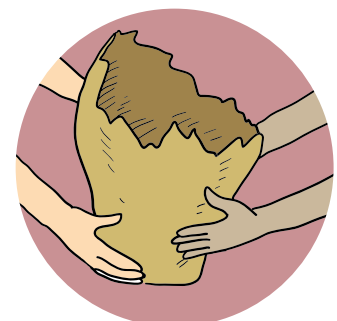
AVC 4

Areas capable of promoting environmental services in critical situations, such as the protection of water basins and erosion control.



HCV 5

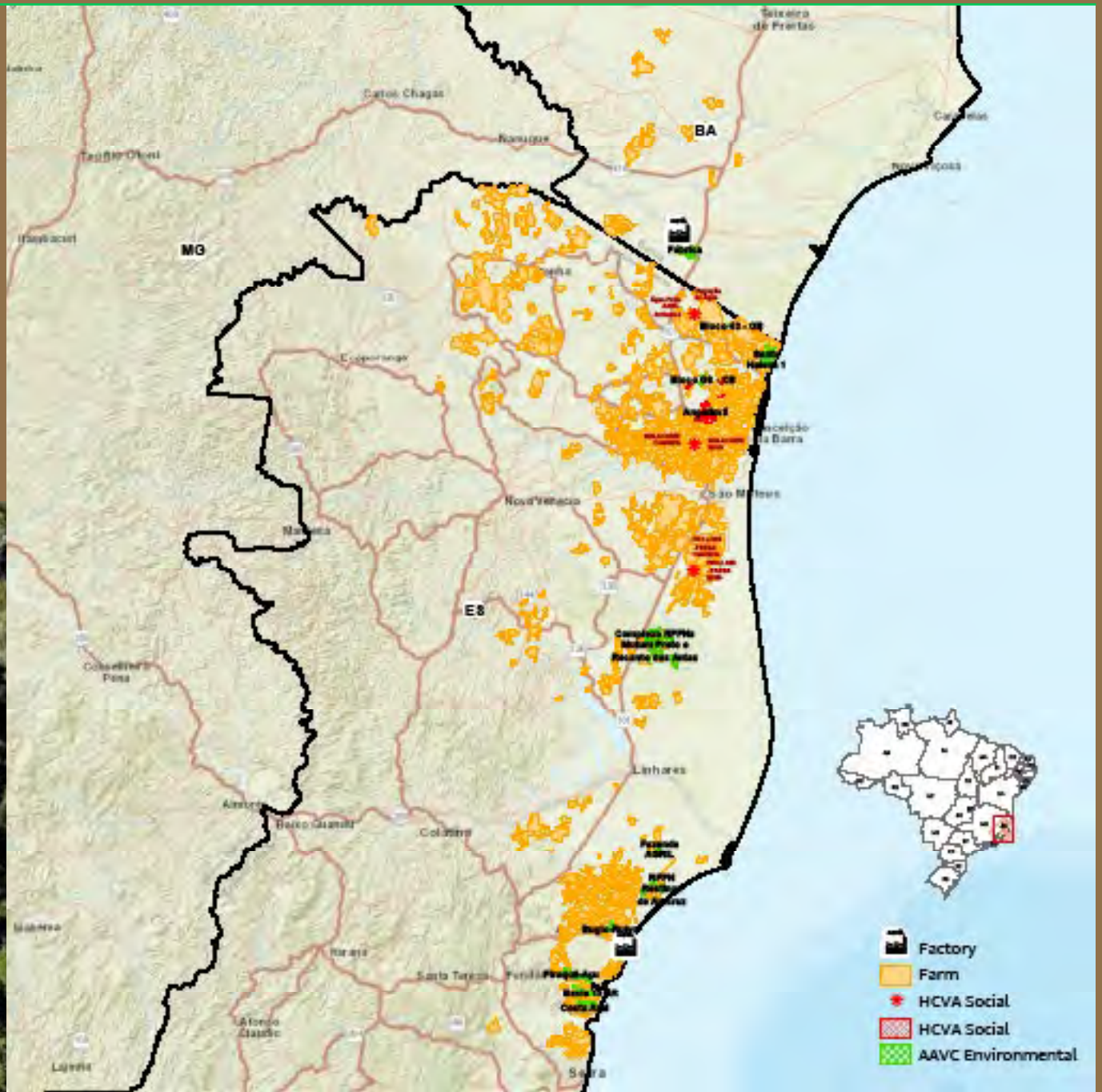
Important areas to meet the basic needs of communities, such as those related to health and subsistence.









HCV 6







Important areas for the traditional cultural identity of communities.

MAP OF HCVA - SOCIAL AND ENVIRONMENTAL - FBU ES



Measures of protection and monitoring according to attributes of High Conservation Values

High Conservation Values	Characteristics	Risks and threats	Impact	Protection measures	Monitoring
					
HCV 1	Endemic, rare, threatened or endangered species at the global, national or regional level	<ul style="list-style-type: none"> a. Illegal practices (wildfires, theft of wood and native flora deforestation for alternative use of soil, mineral theft, predatory hunting and fishing, trespassing, among others) b. Operational damage to fauna and flora c. Non-authorized presence of domestic animals or ranching d. Propagation of invasive species of flora and fauna e. Illegal and inadequate disposal of residues 	<ul style="list-style-type: none"> a. Loss of biodiversity b. Reduction in native vegetation coverage c. Damage to individuals on the borders Imbalance of the ecosystem e. Reduction of the gene flow f. Disturbance of wildlife 	<ul style="list-style-type: none"> a. Program for environmental awareness among collaborators b. Program of Emergency Assistance c. Implementation of preventative measures and of firefighting d. Patrimonial surveillance; e. Periodic patrolling with a team specialized in identifying events e. Logging of environmental events f. Environmental recommendation in operational book g. Planning for the promotion of ecological connections i. Placement of identification signs in loco j. Updating of the company's registration database (maps) with the location of HCVAs k. Prioritizing, whenever possible, ecological restoration l. Suzano's commitment with Zero deforestation policy 	<ul style="list-style-type: none"> Anthropic actions: Bimonthly Birds and mammals: Triannual Flora: Every 4 years
HCV 2	Significantly wide areas at the global, national or regional level, containing viable populations of naturally occurring species.	<ul style="list-style-type: none"> b. Operational damage to fauna and flora c. Non-authorized presence of domestic animals or ranching d. Propagation of invasive species of flora and fauna e. Illegal and inadequate disposal of residues 	<ul style="list-style-type: none"> e. Reduction of the gene flow f. Disturbance of wildlife 	<ul style="list-style-type: none"> c. Implementation of preventative measures and of firefighting d. Patrimonial surveillance; e. Periodic patrolling with a team specialized in identifying events e. Logging of environmental events f. Environmental recommendation in operational book g. Planning for the promotion of ecological connections i. Placement of identification signs in loco j. Updating of the company's registration database (maps) with the location of HCVAs k. Prioritizing, whenever possible, ecological restoration l. Suzano's commitment with Zero deforestation policy 	<ul style="list-style-type: none"> Anthropic actions: Bimonthly Vegetation coverage with satellite imaging: Annual Birds and mammals: Triannual (fast diagnostics) Flora: Every 4 years (fast diagnostics)
HCV 3	Ecosystems, habitats or refuges for rare, threatened or endangered biodiversity	<ul style="list-style-type: none"> e. Illegal and inadequate disposal of residues 	<ul style="list-style-type: none"> f. Disturbance of wildlife 	<ul style="list-style-type: none"> f. Environmental recommendation in operational book g. Planning for the promotion of ecological connections i. Placement of identification signs in loco j. Updating of the company's registration database (maps) with the location of HCVAs k. Prioritizing, whenever possible, ecological restoration l. Suzano's commitment with Zero deforestation policy 	<ul style="list-style-type: none"> Anthropic actions: Bimonthly Birds and mammals: Triannual (fast diagnostics) Flora: Every 4 years (fast diagnostics)
HCV 4	Areas capable of promoting environmental services in critical situations	<ul style="list-style-type: none"> a. Illegal practice (wildfire, deforestation for alternative use of soil, mineral theft, trespassing, among others) b. Operational damage to flora c. Non-authorized presence of domestic animals or ranching d. Illegal and inadequate disposal of residues e. Erosion and sedimentation 	<ul style="list-style-type: none"> a. Reduction in native vegetation coverage b. Loss of soil c. Soil compaction d. River silting e. Reduction in water availability f. Reduction in water quality 	<ul style="list-style-type: none"> j. Updating of the company's registration database (maps) with the location of HCVAs k. Prioritizing, whenever possible, ecological restoration l. Suzano's commitment with Zero deforestation policy 	<ul style="list-style-type: none"> Anthropic actions: Bimonthly Vegetation coverage with satellite imaging: Annual

High Conservation Values	Characteristics	Risks and threats	Impact	Protection measures	Monitoring
					
HCV 5	Essential areas and resources to meet the local communities, indigenous peoples or traditional peoples basic needs	<ul style="list-style-type: none"> a. Illegal practices (wildfires, native wood and plants theft, deforestation for alternative use of soil, mineral theft, trespassing, among others) b. Deforestation c. Operational damage d. Loss of access to cultural values and resources 	<ul style="list-style-type: none"> a. Loss of biodiversity; b. Scarcity of resources for extraction; c. Reduction in water availability. 	<ul style="list-style-type: none"> a. Patrimonial surveillance; b. Implementation of preventative measures (ex. maintenance of roads and firebreaks) and of firefighting. c. Environmental education actions d. Access granting guarantee e. Placement of signposts 	Anthropic actions and community opinion: Quarterly
HCV 6	Areas with special cultural, archaeological, or historical meaning at the global or national level and/or of critical importance for the traditional culture of local communities, indigenous peoples or traditional peoples.	<ul style="list-style-type: none"> a. Patrimonial damage and depreciation b. Operational damage c. Water availability d. Fire e. Loss of access to cultural values and resources 	<ul style="list-style-type: none"> a. Devaluation or loss of cultural identity; b. Deterioration of the cultural, historical or archaeological heritage; c. Disfigurement of places with cultural traditional, ecological, or religious importance 	<ul style="list-style-type: none"> f. HCVA identification or SML g. Open dialog with the community h. Identification on the operation maps i. Maintenance of physical structures 	
SML (Special Meaning Location)	It is a natural or anthropic area or an area with infrastructure used by communities for cultural or religious events.				Anthropic actions and community opinion: Biannually



Biodiversity management

Suzano understands Biodiversity Monitoring as the tracking of development and changes in components and parameters of the landscapes and communities of fauna and flora, aiming to assess the effects of forest management on the environment.

Fauna

The primary data consist of information gathered in previous monitoring that complement the primary data gathered in the field in Suzano's areas during its annual campaigns.

At FBU-ES, eight HVCAs and three eucalyptus crops are part of the biodiversity monitoring program. The monitored HVCAs are: RPPNs Complex *Mutum-Preto* and *Recanto das Antas*, RPPN *Restinga de Aracruz*, *Fazenda Agril*, HCVA *Piraquê-Açu*, HCVA *Bloco G8CB*, HCVA *Santa Helena 1*, HCVA *Bloco 43CB* and HCVA *Bugio-Ruivo*. The monitored eucalyptus crops are located in the farms *Montanha*, *Agril* and *Eldorado II*.

There was no monitoring of mammals in HVCAs at FBU-ES in 2022 because the monitoring is carried out every 3 years and had already been done in the previous years.

Mammals of medium and large size total 69 species, of which 35 were identified in the last monitoring in 2022. Birds sum up 591 species, of which, 225 were detected in the last monitoring, conducted in 2022.



Blue dacnis (*Dacnis cayana*)



Turkey vulture (*Cathartes aura*)



Harris's hawk (*Parabuteo unicinctus*)

SPECIES REGISTERED UNTIL THE LAST MONITORING OF 2022



591
BIRDS



69
MAMMALS



1.096
PLANTS



49
REPTILES



51
AMPHIBIANS

*History of biodiversity database reviewed and updated in 2022

Flora

In the monitoring of flora, 1,096 species were recorded. The last monitoring, conducted in 2022, recorded 203 species of flora.

With the vegetation and fauna inventory in the company's area, it is possible to develop recommendations to keep and/or improve the conservation of species, such as environmental restoration of priority areas and protection against fire. Continuous monitoring generate knowledge based on the improvement of environment management techniques, contributing to the preservation of the local biodiversity.

The chart below shows the species Identified in the 2022 monitoring, according to the level of endangerment as per the IUCN's Red List of Threatened Species, the National List of the Ministry of Environment (MMA) and the State List (IEMA-ES).

IN THE LAST
MONITORING,
IN 2022,
30 THREATENED
SPECIES OF PLANT
WERE IDENTIFIED



Pyrostegia venusta

ENDANGERED SPECIES IDENTIFIED IN THE 2022 MONITORING OF FLORA AT FBU ES

Group	Species	Popular name	IUCN Red List (2020)	National list MMA (2018)	State list IEMA-ES
Flora	<i>Allagoptera caudescens</i>	Palmito-amargoso	-	-	VU
	<i>Annona glabra</i>		-	-	VU
	<i>Bunchosia acuminata</i>		-	-	VU
	<i>Campomanesia aromatica</i>		VU	-	-
	<i>Centrolobium sclerophyllum</i>		-	-	VU
	<i>Dalbergia elegans</i>	Mussutaíba	-	-	VU
	<i>Eugenia prasina</i>	Guruçú	VU	-	-
	<i>Ficus cyclophylla</i>		EN	-	VU
	<i>Hirtella triandra</i>		-	-	VU
	<i>Hornschuchia leptandra</i>		-	EN	-
	<i>Hymenolobium janeirensis</i>		-	-	VU
	<i>Joannesia princeps</i>	Boleira	VU	-	-
	<i>Machaerium fulvovenosum</i>	Jacarandá-cipó	-	-	VU
	<i>Manilkara elata</i>	Parajú-mirim	EN	-	EN
	<i>Manilkara longifolia</i>		EN	-	VU
	<i>Melanoxylon brauna</i>	Braúna-preta	-	VU	CR
	<i>Micropholis gardneriana</i>	Brouardi	VU	-	-
	<i>Mollinedia glabra</i>		VU	-	-
	<i>Mollinedia salicifolia</i>		-	-	VU
	<i>Myrcia obversa</i>	Iodoflix	VU	-	-
	<i>Myrcia sucrei</i>	Araçá-coelho	VU	-	-
	<i>Palicourea fulgens</i>		-	EN	-
	<i>Pouteria pachycalyx</i>		CR	-	VU
	<i>Pseudima frutescens</i>	Pitomba-falsa	-	-	VU
	<i>Rinorea bahiensis</i>	Tambor	-	-	VU
	<i>Sorocea guilleminiana</i>	Folha-de-serra	VU	-	-
	<i>Swartzia linharensis</i>		-	EN	VU
	<i>Toulicia subsquamulata</i>		-	VU	-
	<i>Unonopsis aurantiaca</i>		EN	EN	-
	<i>Zeyheria tuberculosa</i>	Ipê-felpudo	VU	-	-

Monitoring of water resources

Suzano assesses the effects of its crops on the quality and quantity of water resources through a representative monitoring network according to the scale and intensity of plantings.

One of the mechanisms applied for the maintenance of water resources is based on natural control developed across evolutionary processes of the landscape. One example is the well-known relationship between forest coverage and water resources, mainly on Permanent Preservation Areas, aiming to comply with the legislation and the conditionals of forest operation licenses.

The monitoring is a continuous process at the microbasins that represent the different regions of FBU ES operation.



IN 2022,
55 SPOTS IN WERE
MONITORED IN 22 BOSINS

From the lab results it is possible to build an assessment of the monitored areas, in order to set a possible relation between the eucalyptus crops and the surface and underground water conditions located in its area of influence.

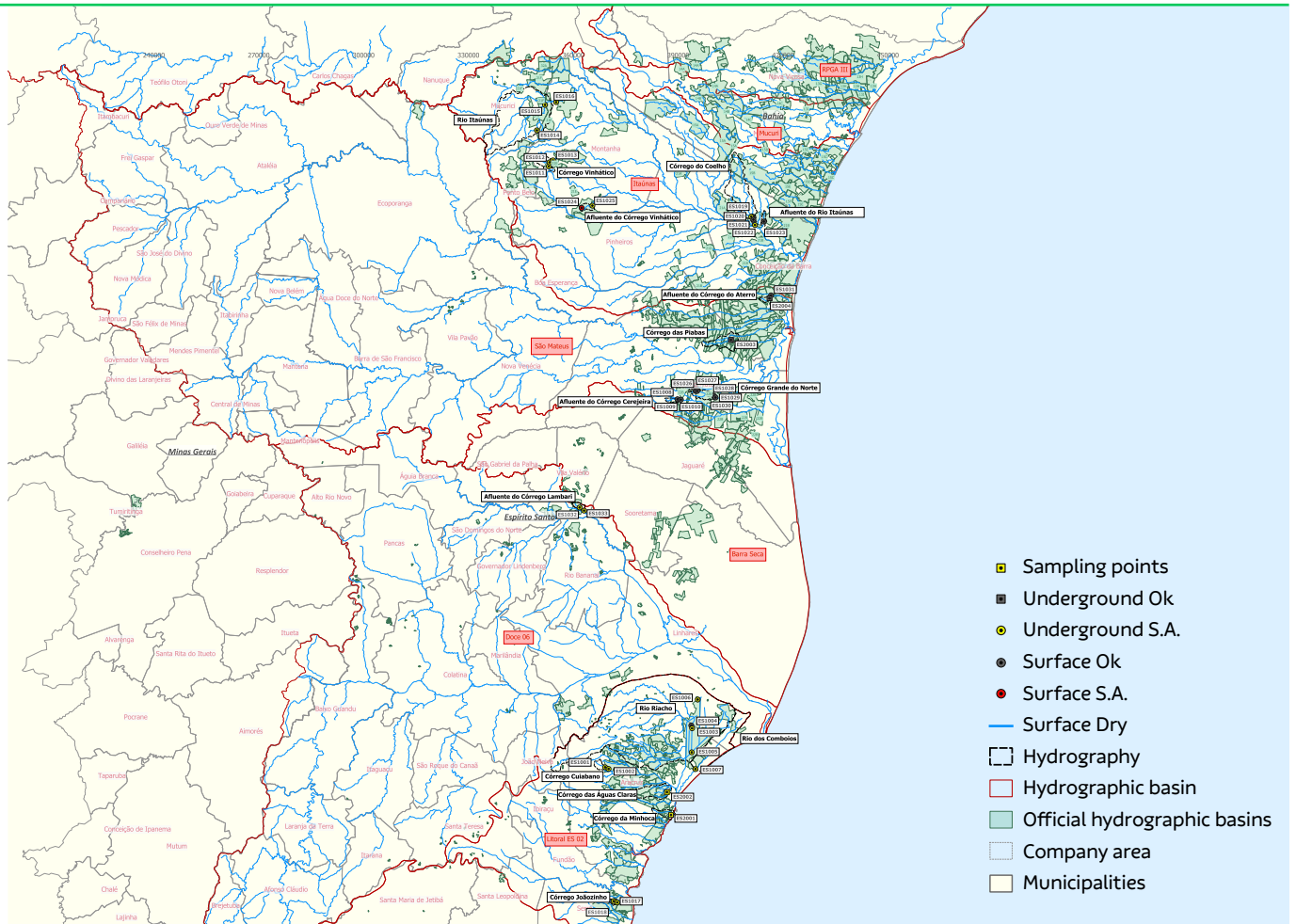
This program's execution consists of two monitoring campaigns. These campaigns gather quali-quantitative data from surface and underground water in areas near eucalyptus crops using in situ measurements of some parameters and collecting samples for lab analysis.

Studies on water quality and flow show no negative impact to the environment associated with the eucalyptus crops.

Below there's a map of the official water basins, sub-basins and monitored sampling spots in the state of Espírito Santo.



LOCATION OF MICROBASINS (ES) AND WATER QUALITY MONITORING SPOTS



Environmental aspects and impacts of the Forest Management

Suzano is committed to adopting the best environmental practices to promote, in an innovative way, sustainable development.



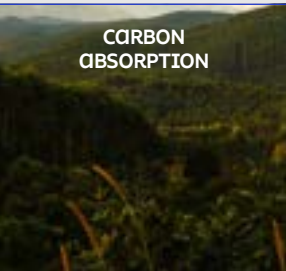

Focusing on the sustainability of its processes, the company uses managerial instruments and tools that provide better environmental quality for its forestry activities. Managing environmental aspects and impacts, the FBU defines methodologies for the identification, assessment and control of environmental aspects and impacts (of its services, activities and products), seeking to minimize all possible adverse impacts and strengthen the beneficial ones.

Environmental aspects and impacts of forestry processes are identified and assessed considering the following social and environmental safeguards, among others:

- The new laws that apply to the business;
- Compliance with the current law;
- Identified regulatory marks;
- Obligations resulting from agreements and voluntary certifications;
- Change management for new products, services, activities and equipment.

Once identified the environmental aspects and impacts, mitigation, control and monitoring actions are established.

EXAMPLES OF ENVIRONMENTAL ASPECTS AND IMPACTS OF THE FOREST MANAGEMENT

Type of impact	Adverse	Adverse	Benefic	Benefic
Environmental aspect	 <p>WATER CONSUMPTION</p>	 <p>RISK OF FIRE OUTBREAK</p>	 <p>CARBON ABSORPTION</p>	 <p>MELHORIA DOS PROCESSOS ECOLÓGICOS</p>
Environmental impact	Scarcity of water resources.	Alteration in the physical quality of soil.	Reduction of greenhouse effect.	Biodiversity recovery.
Mitigation or enhancement measure	<ul style="list-style-type: none"> • Daily control of fundraising in operations; • Training on the topic; • Request for new collection spots from environmental agencies 	Fire fighting systems and fire brigade teams.	CO ₂ sequestration by forest production and conservation areas.	<ul style="list-style-type: none"> • Restoration of degraded areas; • Conservation of Permanent Preservation Areas and Legal Reserves.



SINCE 2010
8.6K HA
 OF RESTORATION AREAS
 WERE IMPLANTED IN THE
 FBU ES AREAS

Ecological Restoration

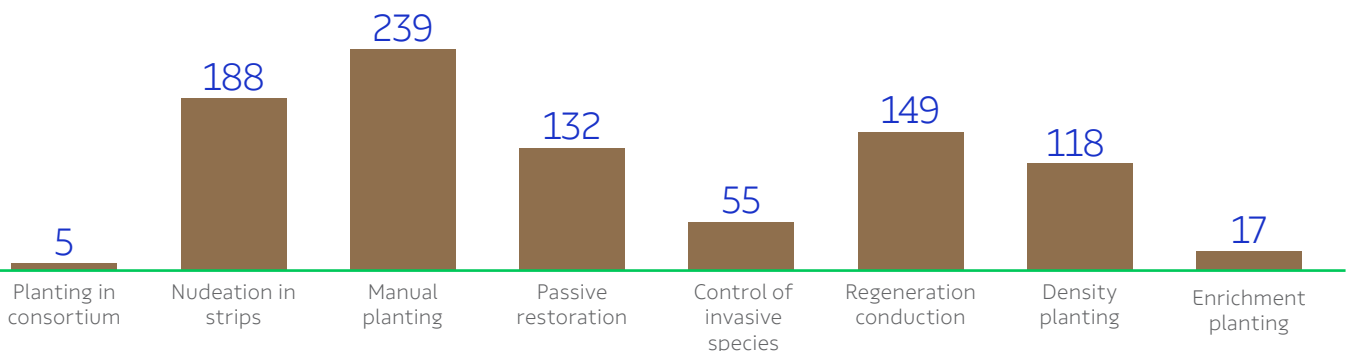
As part of its commitment with the environment, Suzano promotes restoration actions on its Permanent Preservation Areas, Legal Reserves and in all states where it operates. It is one of the largest Brazilian restoration programs, encompassing two biomes considered as hotspots of biodiversity - the Atlantic forest and Cerrado - and the transition area Cerrado - Amazon forest.

To emphasize this commitment, the company is a signatory of the Pact for the Restoration of the Atlantic forest, an initiative that aims to restore 15 million hectares in the country until 2050.

All implanted areas are monitored to evaluate the techniques adopted and indicate whether management is necessary focusing on the ecological succession and resulting recovery. In Espírito Santo, 903.12 hectares were implanted in 2022. In addition to the implantation activities, 346.92 hectares were maintained with activities that include ant control, mowing, chemical weed and other activities.

The Ecological Restoration Program contributes with an increase in biodiversity and the creation of several environmental services in its area of operation using the following restoration methods: planting of native species seedlings from the Atlantic forest, implementation of natural regeneration, invasive species control, and isolation of protected areas. The best technique is defined according to the environmental conditions of the area to be restored, as well as its potential for regeneration, history of land occupation and possible degradation factors.

ECOLOGICAL RESTORATION IN 2022 (HA)



Solid waste management

Suzano’s Solid Waste Management adopts practices to classify, separate, store, collect, transport, and dispose of the waste produced in forestry operations and activities, aiming to:

- Reduce waste production;
- Reuse residues, optimizing its use before disposal;
- Recycle residues;
- Adequately process waste;
- Ensure the proper disposal.

Waste management in the forest areas is performed according to the effective legislation. Waste is forwarded according to its classification to recipients that undergo a rigid process of evaluation and approval. Class I waste (Hazardous) might be sent for co-processing, recycling and licensed Class I landfills. Class II waste (non-Hazardous) are sent for recycling or licensed landfills, depending on its physical characteristics.

Packages of pesticides used in forestry operations are sent to licensed Empty Crop Protection Packages Receiving Units for reverse logistics.

WASTE MANAGEMENT STEPS



- Recycling
- Reuse
- Reverse logistics
- Co-processing
- Licensed landfill

Environmental training

The Environmental Training Program disseminates environmental information and practices to raise awareness among its participants about sustainable attitudes and behaviors capable of transforming the socioenvironmental reality.

Internal Environmental Training

Program that targets Suzano's employees and collaborators. In 2022, 58.28 hours of training were offered remotely at the units of BA, MS and ES.





ACKNOWLEDGEMENT OF AND RESPECT FOR OUR PROFESSIONALS

12 ACKNOWLEDGEMENT OF AND RESPECT FOR OUR PROFESSIONALS



Safety, Health and Quality of Life

The valuation of, and the respect for, our professionals are Suzano's commitment. Safety and health management is one of Suzano's priorities. The company encourages all individuals to take responsibility for safety and spares no resources to further reduce the rate of accidents.

The Occupational Health and Safety Management program provides guidance on the registration of events in and outside the company, providing the Safety Department with the elements required for the development of awareness campaigns that extrapolate the management boundaries and contributes significantly to the quality of life of employees, their families and the communities surrounding Suzano's areas of operation.

Assessing and ensuring work safety and health conditions, as well as the use of safety devices, are also covered by the collective agreement signed with the employees' representative entities. All events related to the employees health and safety are registered and monitored based on a corporative standard for the communication of accidents, incidents and occupational illnesses.

The main programs developed by Suzano to ensure safety at work involve the preparation of documents that seek to identify the risks of accidents such as the Preliminary Risk Analysis (APR), Work Risk Observation (OPA), Safety in the Area, and work permits

All activities are checked and monitored for below standard conditions and practices (*Fique Alerta / DNA - De Olho na Área*) and approached by programs as the Program for Medical Control of Occupational Health. The system is composed of different groups and committees that help monitoring and provide guidance on safety and health conditions. The initiatives aim to establish and maintain a responsible and transparent relationship with all employees in order to adopt the best existing practices in the industrial, forest and administrative units. This process helps to build Suzano's reputation among its key relationship public and seeks to explore synergies and to better employ our professional talents.



SAFETY PERFORMANCE OF FBUE S FOREST OPERATIONS

Safety indicators	2022
Rate of accidents (Own employees and third parties)	0.70
Severity rate (Own employees and third parties)	38.10
Perception of the degree of knowledge on the Safety Management Integrated System	83%
Score obtained with OPA - Positive observation of the activity	93.11



Workforce Qualification

The company contributes to the generation of local jobs by improving the economic activities in the region of operation.

Our own and outsourced employees receive personalized service and professional development opportunities. All collaborators take part in training activities that address not only technical aspects of the operation, but also subjects such as ethics and human rights. The welfare of every employee and level of satisfaction with the company are also closely monitored through organizational surveys.

The company conducts a structured process of integration of new employees and permanent vendors that aims to facilitate their adaptation into the work environment, the organizational culture, concepts and drivers, environmental conservation, code of conduct, the management system and relationship with stakeholders.

Suzano has a benefits policy aligned to the good practices of the market and to its employees' expectancies. The benefits granted represent a significant value for the company and its employees, and are managed in order to ensure the best quality level and provide comfort and satisfaction.

JOBS CREATION AT THE ARACRUZ FORESTRY UNIT

Own employees*	954
Outsourced employees*	2,435
Total	3,389

* Data relative to Dec/2022



SOCIAL MANAGEMENT

13 SOCIAL MANAGEMENT

Suzano prioritizes clear and straightforward actions toward social and environmental investments.

With this end, the company considers a set of specific actions aimed at the different audiences influenced by its activities.



Management of relationship with stakeholders

Suzano’s relationship strategy is to ensure social and business legitimacy through the long-term strengthening of its interaction with neighboring communities and the integration of their interests into forestry business management.

Suzano’s relationship with the communities surrounding its operations follows the following approach:



1. Priorization matrix

Process of characterization of the area where Suzano is present to guide the activities with social impact to be adopted in each case. This study provides an assertive guidance for social investment and other actions for local engagement.



2. Engagement

Structured, inclusive and continued relationship, where the company plays the role of a partner to foster the local development. It takes place on the communities most impacted by Suzano’s operation.

In rural communities, engagement is promoted by programs for income generation such as the Rural and Territorial Development Program (PDRT), Invitation letters, craftsmanship production chain, fishery and circular economy, as well as sustainable extractivism.



3. Operational dialog

It is a channel for direct communication through which the company informs the residents of neighboring communities about the forestry operations scheduled in that region according to an annual planning of activities, and discusses impacts and mitigation actions.

This process also integrates annual visits to ensure a continuous relationship with the neighboring communities.

Management of social impacts

Suzano understands “social impacts in the communities” as any changes (harmful or beneficial) caused entirely or partially by its forestry operations within a radius of three kilometers of its properties or areas leased for eucalyptus production.

The model of social impacts management seeks to eliminate, reduce or compensate the negative impacts through management practices, socioenvironmental investment, and continuous control and mitigation actions.

Despite all measures taken to prevent and mitigate adverse impacts, unpredictable losses and damages can still occur, directly affecting the communities resources or livelihood. In this case, these losses and damages are compensated and mitigated, in common agreement and according to the particularities of each case, in a fair and balanced way.

In the following, examples of adverse social impacts from forestry management and the corresponding mitigation and prevention measures are presented. For conflict resolution, disputes and compensations involving rights of use, possession and control of the land, the company has defined directives that prioritize a friendly and fair solution for the parts.



Analysis and monitoring of processes of relationship with stakeholders

All the demands concerning forestry operations, identified in the engagement processes, and operational dialogs are critically assessed and validated by the operational areas to review the social impact matrix and improve Suzano’s forest management.

EFFECTIVENESS OF THE SOCIOENVIRONMENTAL IMPACTS MITIGATION ACTIONS

Area	Category	Name of Monitoring	Indicator	Results 2022
Social	Investment in the community (GRI EC1)		Amount of money invested in social projects/programs	R\$ 7,778,387.41
			Communities/localities benefited by the projects	73
	Social impacts in the communities	Operational dialog and participative agenda	Rate of fulfillment of the annual dialog program	100%
			Rate of satisfaction with the solutions for the incidents	90%
			Rate of effectiveness of mitigation actions	90%
			Complaints about damage caused by management	
			Number of incidents reported	377
			Average time to respond to complaints	84 days



Socioenvironmental investment

Socioenvironmental investment is the voluntary transference of private resources in a planned, monitored and systematic way to social, environmental and cultural projects of public interest that contribute to the development of the communities where the company operates. Such investments are segmented into four types of interventions:

Cooperation

One-off support that require a counterpart from the applicant and is applied to community assets. Are necessarily related to the needs of forest and industry operations, expertise and products from Suzano's business.

Donation

Financial contribution or one-off spendings that meet the demands of institutions, bodies or individuals representing the community that are non-profit and do not require a counterpart.

Sponsorship

Granting of resources, whether financial, material and/or services provided by Suzano to enable certain activity or event. It is considered a communication tool.

Programs and projects

Social investments planned and developed within the scope of a certain program, with well-defined purpose and duration (objectives, goals, deadlines, process indicators, results and impacts and responsibilities).



Socioenvironmental programs and projects

The Social Programs and Projects take place mainly after the identification of the level of influence of the enterprise on the community, the socioeconomic aspects of each one (level of organization, vulnerability degree, etc.) and the partnership level (company and community). They arise also from the communication processes, in line with the social pillars of Suzano.



The extension in which such programs and projects are carried out, in the community, derive from the following factors:

- The communities and municipalities social and economic vulnerability;
- The influence of Suzano’s forest management on the municipality and community areas;
- Relationship and social investment history in the communities and municipalities;
- Number of communities directly affected by Suzano’s forest planting in the municipality;
- Communities interest and availability in taking part in the programs and projects;
- Public authority’s interest and availability to co-participate or support such programs and projects;
- Budget availability.





MAIN RESULTS OF THE SOCIAL PROJECTS OF 2022

Project/Program	# of Part.	# of Mun.	# of Assoc.	Results 2022
Rural and Territorial Development Program - PDRT	412	2	11	In 2022, 412 people were directly impacted in 11 organizations of the rural communities in ES. They were supported by the model of socioenvironmental investment in technical assistance, seeking the strengthening of the organizations' management, production and commercialization.
Colmeias Program	265	7	10	The program allowed the generation of over 6.3 million reais in products and food traded or consumed, relative to a production of about 511 tons of products from honeybees and melipona.
Recycling	62	4	5	Project created in 2021, with the aim of strengthening the recycling associations, providing an increment in the families' income.
Agente do Bem	2,000	2	Does not apply	Setting up local teams (own collaborators and third parties') to expand and implement the program in all units; Focal points for the program's regional management to promote the cause; setting up the communication team (corporate and local representatives) on the topic of sexual violence against children and adolescents; expansion of the guidance and engagement campaigns for children and adolescents rights and for the women's defense in all units; performing fast local diagnosis of the municipalities participating in the program.
Tupiniquim and Guarani Sustainability program - PSTG	343	1	12	PSTG allowed income generation through products and food commercialized/consumed by the 343 participants in 12 organizations.
Cooperative São Domingos	80	1	40	In 2022, this program enabled job and income generation by supplying forestry services in quilombola communities.
Craftsmanship	21	1	1	The Espírito das Águas (Spirit of Water) Program has boosted the craftsmanship in the coastal region of Aracruz-ES, seeking to provide qualification to the already talented local craftswomen. The artisanal production unites appreciation of the local culture, professionalization of the craftswomen and fosters environmental conservation. In the north of ES, craftsmanship was important to bring new communities closer and to provide expertise for the company's new strategy to work on family income in a diversified way. Two organizations work with fiber of banana tree: Comunidade Santana (Conceição da Barra), with support for commercialization, and Angelim III, with support for the productive chain -including donation of banana trees saplings to ensure supply, and income diversification. When it comes to sewing, women from Ateliê in Vila de Itaúnas are diversifying their products and expanding sales, and Morro da Arara is growing in terms of B2B sales. Finally, a project targeting mental occupation for women is incrementing women's family income in Nossa Senhora da Penha with the production of fashion accessories made with beads.
Regional Call	732	2	341	In 2022, Suzano launched the call Editais Regionais, with the aim of supporting projects focusing on job and income generation proposed by organizations of the civil society (OSC), cooperatives, individual microentrepreneurs and family farmers of the local and quilombola communities, located in areas where the company operates in the states of Espírito Santo and Bahia. Resources for OSCs and cooperatives will be transferred via bank account and for individual microentrepreneurs and family farmers via prepaid card.
Suzano in the communities (vocational training in partnership with SESI/SENAI)	1,371	2	Does not apply	SESI and SENAI teams started the courses and workshops in August, 2022. Workshops: 48 workshops on cooking, management and craftsmanship in 38 different communities (1,093 subscribers, 228 drop outs and 865 graduated). Courses: 16 courses for 36 different classes, encompassing approximately 25 communities (764 subscribers, 208 drop outs and 506 graduated).As equipes do SESI e SENAI iniciaram os cursos e oficinas em agosto/2022.

Calls

We understand that we need to renovate the way we produce, consume and distribute value, and the way we relate to nature; we also understand that more social balance is very good for the planet. This belief moves us to invest in our commitment to renovate life and, through our social investment, to help 200 thousand people to leave the line of poverty in our areas of operation until 2030.

This commitment, defined along with our long-term goals, is a great challenge. However, we know that we can only reach it with successful partnerships with organizations capable of developing good projects of job and income generation in communities in situation of social and economic vulnerability.

With this end, Suzano invested R\$2,000,000.00 (two million reais) to support the call for ideas and projects from organizations and civil society, cooperatives, small companies, individual microentrepreneurs and non-formal organized groups focusing on job and income generation, thus fostering the creation and strengthening of local businesses in the municipalities of Conceição da Barra and São Mateus, in the state of Espírito Santo.



Amigos da Justiça Association



Printing Course

In addition to the financial contribution, the program also offers training in entrepreneurship and business management.

We will support ideas and projects from:

- Informal groups (composed by at least 5 people, containing at least one person older than 18 years of age): up to R\$15 thousand;
- Individual MicroEntrepreneurs (MEI) and micro-companies registered with Simples Nacional and annual revenue of up to R\$ 120 thousand: up to R\$20 thousand;
- Civil Society Organizations (for instance: community associations, associations of producers, associations of artisans, quilombola associations, institutes, foundations and cooperatives): up to R\$30 thousand.

To implement the program for incubation and acceleration of local business and entrepreneurs, Suzano relies on a partnership with Transforma.ai, a company largely experienced in the strategic development of private social investment, local development and environmental education all over the country.

Objectives

The Call for Ideas and Projects aims to foster the creation of opportunities for job and income generation, boosting ideas and projects with potential to become businesses, even if in the initial stage, in the municipalities of São Mateus and Conceição da Barra - ES.

Thus, the region's associations, cooperatives, non-formal organized groups, small companies and individual microentrepreneurs will have the opportunity to apply their idea or pilot project, considering what they are already doing or would like to do in their communities.

The main contribution of this call for ideas and projects is to boost local opportunities and knowledge, considering the identified needs and transforming them into solutions for the generation of jobs and income in the short-term.

Numbers of beneficiaries

In 2022 the program encompassed about 2,500 direct and indirect beneficiaries in the municipalities of Conceição da Barra and São Mateus in Espírito Santo.



Visiting Córrego do Macuco



Pastry course

Municipality	Locality	Call	Association/Project	Type of Organization
São Mateus	Sta. Maria	Call for businesses	<i>Apasma - Associação de Pequenos Produtores de Sta. Maria</i>	
	Ass. Zumbi dos Palmares	Call for businesses	<i>Associação de Pequenos Agricultores do Assentamento Zumbi dos Palmares - APAP</i>	
	Com. Quilombola Divino Espírito Santo	Call for businesses	<i>Assoc. dos Pequenos Produtores Rurais e Remanescentes Quilombolas da Comunidade de Divino Espírito Santo</i>	
	Com. Quilombola Córrego do Chiado	Call for businesses	<i>Associação de Pequenos Agricultores e Moradores Quilombolas do Córrego do Chiado</i>	
	Nestor Gomes	Call for businesses	<i>Afagir - Assoc. de Agricultores Córreg. Joeirna 1 e Arredores</i>	
	Com. Sta. Luzia do Rio Preto	Call for businesses	<i>Associação Semeando a Liberdade</i>	
	Pedra D'Água	Call for businesses	<i>Associação de Produtores de Aroeira do Espírito Santo</i>	
	Com. Quilombola Morro das Araras	Call for businesses	<i>Assoc. de Pequenos Agricultores Rurais e Remanescentes da Quilombolas da Comunidade Morro da Arara</i>	
	Guriri	Call for businesses	<i>Associação de Artesãos e Comidas Típicas do Balneário de Guriri no Município de São Mateus</i>	
Porto	Call for businesses	<i>Centro Social Reconstruir a Vida do Município de São Mateus</i>		
Conceição da Barra	Com. Quilombola Angelim I	Call for businesses	<i>Associação de Pequenos Agricultores do Angelim I</i>	Civil Society Organizations (Assocation, Instirute and Foundation)
	Braço do Rio	Call for businesses	<i>Aparpri- Associação de Pequenos Produtores Rurais do Assentamento Rio preto e Rio Itaúnas</i>	
	Ass. Paulo Vinhas	Call for businesses	<i>Associação de Mulheres Rurais do Assentamento Paulo Vinhas e Comunidades Vizinhas</i>	
	Com. Córrego do Arthur	Call for businesses	<i>AFCA - Associação de Agricultura Familiar da Comunidade do Córrego do Artur</i>	
	Com. Quilombola do Coxi	Call for businesses	<i>Associação Quilombola dos Pequenos Produtores Rurais Nova Geração - AQPPRNG</i>	
	Sítio Novo Sossego	Call for businesses	<i>Associação de Apicultores Barrense-AAPIB</i>	
	Ass. Valdício Barbosa	Call for businesses	<i>AMAG - Associação de Mulheres Agricultoras do Município de Conceição da Barra</i>	
	Distrito de Itaunas	Call for businesses	<i>Assoc. de Pequenos Agricultores Sustentáveis do Angelim I</i>	
	Distrito de Itaunas	Call for businesses	<i>Assoc. dos Agric. Familiares de Itaúnas Ebenézer - AAFIE</i>	
	Com. Córrego das Palmeiras	Call for businesses	<i>Associação de Agricultores Familiares do Córrego das Palmeiras - AAFACOP</i>	
	Centro	Call for businesses	<i>Associação dos Artesãos de Conceição da Barra</i>	
	Sayonara	Call for businesses	<i>Associação de Moradores Bairro Sayonara</i>	
São Mateus	Distrito de Itaúnas	Call for businesses	<i>Sociedade Amigos por Itaúnas</i>	
	Com. Quilombola Dilô Barbosa	Call for businesses	<i>Bem-me-quer Papelaria Personalizada</i>	
	Sernamby	Call for businesses	<i>Pinão Bar</i>	
	Com. Quilombola Nova Vista I	Call for businesses	<i>Junio Lemos de Jesus Ramos (barber shop)</i>	
	Ayrton Senna	Call for businesses	<i>Joel Silva Soares (maintenance enterprise)</i>	
	Com. Quilombola Morro das Araras	Call for businesses	<i>Nice Salgados</i>	
Conceição da Barra	Porto	Call for businesses	<i>Lafridi (clothing)</i>	Individual Micro Entrepreneur
	Litorâneo	Call for businesses	<i>Nane Confeitaria</i>	
	Braço do Rio	Call for businesses	<i>Projeto Salão - Selma Moreira Borges</i>	
Conceição da Barra	Urbes	Call for businesses	<i>Nômade Produções</i>	
	Com. Quilombola Córrego do Sertão (Braço do Rio)	Call for businesses	<i>Solange Santos Paiva (ornamental plants)</i>	

Municipality	Locality	Call	Association/Project	Type of Organization
	Com. Quilombola S. Jorge		<i>Agricultura do Futuro (Agenor)</i>	
	Ass. Zumbi dos Palmares		<i>Erivaldo&Nunes</i> (rural production)	
	Córrego Grande		<i>Osmaro Quarteza</i> (rural production)	
	Com. Quilombola Nova Vista		<i>Sian & Pimenta do Reino</i> (rural production)	
	Ayrton Senna		<i>Estúdio Bloco 101</i>	
	Com. Quilombola Nova Vista		<i>Werley de Souza Neves</i> (rural production)	
	Com. Quilombola Nova Vista		Josias dos Santos (rural production)	
	Com. S. Geraldo		Customized craftsmanship	
	Sta. Maria		Setting up of restaurant and pastry Dona Vanda	
	Com. Quilombola Nova Vista I		Devaldo Queiroz (Restaurante)	
	S. Pedro		Ubuntu (rural production)	
	Sernamby		<i>Em Família</i> (Padaria)	
	Com. Sta. Leocádia		<i>União Produtiva</i> (rural production)	
	Ass. Zumbi dos Palmares		<i>Espaço Rose</i> (beauty services)	
	Ass. Córrego Grande		<i>Núcleo de Base Ana Primavesi</i> (rural production)	
	Sta. Maria		<i>Valmir José Noventa Junior</i> (rural production)	
	Córrego Grande		<i>Maria Tamara de Lima Santos</i> (rural production)	
	Córrego Grande		<i>Adeni dos Santos Vieira</i> (rural production)	
	Com. Quilombola S. Domingos de Itauninhas		<i>Família no Agro</i> (rural production)	
São Mateus	Com. Quilombola S. Domingos de Itauninhas	Call for businesses	<i>Benedito Rosário de Souza</i> (improvement of the association)	Informal group up to 5 people
	Com. Quilombola S. Domingos de Itauninhas		<i>Hortaliças Soares</i> (rural production)	
	Com. Paulista		<i>Fabricação de Beiju</i> (pastries)	
	Com. Paulista		<i>Grupo Familiar</i> (rural production)	
	Com. Paulista		<i>Grupo Informal</i> (rural production)	
	Com. 13 de Setembro		<i>Produtos da Lucinha</i> (bakery)	
	Com. Sta. Luzia do Rio Preto		<i>Geração de Renda Familiar</i> (rural production)	
	Com. Sta. Luzia do Rio Preto		<i>José Fidelis</i> (rural production)	
	Córrego da Cacimba		<i>A&L Agricultura</i> (rural production)	
	Córrego da Cacimba		<i>Comper Agricultura Familiar</i> (rural production)	
	Cacique II		<i>Alados Comic"s</i> (Audiovisual)	
	Córrego Grande		<i>Sebastião Francisco de Oliveira</i> (rural production)	
	Contena		<i>Grupo Informal de Agricultura Familiar</i> (rural production)	
	Com. Quilombola Nova Vista		<i>Sulino Pereira de Jesus</i> (rural production)	
	Com. Quilombola Cór. do Chiado		<i>Oziel ciprestes bastos</i> (rural production)	
	Com. Quilombola Nova Vista		<i>José Wilton dos Santos Lima</i> (rural production)	
	Córrego Sta. Rita		<i>Plantio de pimenta</i> (rural production)	
	Com. Quilombola Nova Vista		<i>Darci Luiz</i> (rural production)	
	Com. Quilombola Dilô Barbosa		<i>Plantio de Pimenta do Reino</i> (rural production)	
	Com. Quilombola Nova Vista		<i>Sonia Maria de Oliveira Batista da Silva</i> (rural production)	

Municipality	Locality	Call	Association/Project	Type of Organization
São Mateus	Com. Quilombola N. S. da Penha	Call for businesses	<i>Maria Helena Costa Vieira</i> (restaurant)	Informal group up to 5 people
	Aroeira		<i>Coletivo Juventude Urbana</i> (dance group)	
	Com. Quilombola Córrego do Sertão (Braço do Rio)		<i>Erielda Batista De Sousa</i> (rural production)	
	Com. Córrego do Arthur		<i>Cultivar Vida Saudável no Campo</i> (rural production)	
	Com. Córrego do Arthur		<i>Sítio Imperial</i> (rural production)	
	Com. Córrego do Arthur		<i>Sítio Recanto</i> (rural production)	
	Ass. Paulo Vinhas		<i>Grupo de Produtores de Hortaliças</i> (rural production)	
	Com. Quilombola Roda d'Água		<i>Grupo Informal - Plantio de Pimenta do Reino</i> (rural production)	
	Com. Córrego do Arthur		<i>Campo Verde</i> (rural production)	
	Ass. Paulo Vinhas		<i>Futuro Agroecológico</i> (rural production)	
Conceição da Barra	Com. Quilombola Córrego do Alexandre	<i>Matrizes do Quilombo - produção de café</i> (rural production)		
	Com. Quilombola Roda d'Água	<i>Produtores de Café</i> (rural production)		
	Com. Quilombola Córrego do Sertão (Braço do Rio)	<i>Sítio Boa Vista</i> (rural production)		
	Com. Quilombola S. Domingos	<i>Grupo Informal</i> (rural production)		
	Ass. Valdício Barbosa	<i>Farinheira Sustentável</i> (rural production)		
	Córrego Grande	<i>José Carlos Guilherme</i> (rural production)		
	Com. Córrego das Palmeiras	<i>Água na Lavoura</i> (rural production)		
	Com. Quilombola Linharinho	<i>Grupo dos Peq. Produtores de Santana</i> (rural production)		
	Córrego Grande	<i>Grupo Informal</i> (rural production)		
	Com. Água Preta	<i>Mercearia "Água Preta"</i>		
	Com. Quilombola Roda d'Água	<i>Cultivadores de Pimenta do Reino</i> (rural production)		
	Com. Quilombola Roda d'Água	<i>Plantio de Pimenta</i> (rural production)		
	Com. Quilombola S. Domingos	<i>Aquitana</i> (rural production)		
Santana	<i>Wellington Thomaz da Conceição</i> (Confeitaria/Padaria)			
Com. Água Preta	<i>Grupo de amigos</i> (rural production)			
S. Mateus			<i>Instituto Abequar</i>	
			<i>Cáritas São Mateus</i>	
	N/A	Invitation Letter	<i>Bússola Hub</i>	
Conceição da Barra			<i>Amigos da Justiça</i>	
S. Mateus			<i>Coopbac</i>	

Performance and main indicators of forest management

Aspect	Process Resp.	Monitoring	Indicators	Goal 2022	Actual 2022	Critical analysis	Actions	Systems / Databank	Frequency	Intensity
Economic	Harvest	Productivity of transportation	Productivity of FW	56.94 m ³ /h	55.96 m ³ /h	Productivity above the estimated at the Base Plan	Assignment of projects to increase productivity and insertion of development technicians into the harvest modules.	SAP, OneDrive and Power BI	Daily	Monthly assessment of percent of operators below the curve and referral for training (100% of operators below the curve are trained)
		Harvest Productivity	Productivity of harvesters	17.86 m ³ /h	18.92 m ³ /h					
	Social Dev.	Operational dialog and Relationship maintenance	Participants from the communities involved -operational dialog	N/A	764	In 2022, with the stabilization of the pandemic process and the lift on the safety restrictions, the number of participants in the operational dialogs, individuals and meetings increased	Mapping neighbors impacted by forestry operations and applying the operational dialog, according to the schedule of correlated areas.	SISPART Portal of socio-environmental management	Monthly (SISPART) Biannual/ Annual	Concluded in 100% of the areas where some kind of forestry operation has occurred
Social	People and management	Workforce	Hiring of local workforce	N/A	Local hirings ES: 229 (83.88%)	Local workforce usage is good, with operational and administrative job openings filled with local candidates.	We publicize our openings on the Kenoby system (career platform) and we have other initiatives for the local workforce training such as the program Cultivar and Young Apprentice.	Power BI System	On demand	100% non-sampling
						In 2022, we had a total of 352 hirings, 229 of which are local workforce.	We had an expansion in the north of ES and an action directed toward the communities, relying on support from social agents and the attracting talents team.			
	Patrimonial Intelligence	Resíduos Florestais	Donation of tips and branches		R\$ 5,176,500 M	Donation of tips and branches has been deemed an excellent proposal for income generation within local communities and commerce and add value to the families that depend on this resource as the sole source of income and subsistence.	Maintenance of donations of tips and branches to the communities.	Data base IP	Monthly	100% of communities close to harvest operations

Aspect	Process Resp.	Monitoring	Indicators	Goal 2022	Actual 2022	Critical analysis	Actions	Systems / Databank	Frequency	Intensity
Economic	Patrimonial Intelligence	Fire	Fire - crop	Goal not defined	Burning of 4.13 hectares per event	There was a reduction in the burnt area, showing the efficacy in the detection and control of fires. The detections were more precise and the control was more effective, which resulted in a smaller area reached by fire.	<ul style="list-style-type: none"> Investments in technology and innovation for the firefighting structures and monitoring systems and replacement of vehicles and equipment. Development of project with educational bias to act in a preventative way in events with environmental impact. 	Data base IP	Daily	100% of company's areas - according to monitoring PROFLOR
Environment	Patrimonial Intelligence	Fire	Fire - preservation	Goal not defined	Burning of 2.29 hectares per event	Up to 2021, forest fires data was shown as the average of burnt area per outbreak. From 2022 on, it started being reported as burnt area per event, thus keeping the standard of forestry operation data report.	<ul style="list-style-type: none"> Training and activities for the enhancement of Fire fighting techniques. Implantation of extra teams for surveillance and firefighting in critical periods. 			
Economic	Logistics	Distance	Average radius	378 km	327 km	Result below planned due to external down time and weather conditions.	Optimization of routes.	EXCEL, SAP, Forestry Registration and Gis Online	Every 4h	100% non-sampling
Environment	Environmental	Environmental Education Program	Number of people impacted by the Environmental education program (external)	N/A	52 people	<ul style="list-style-type: none"> External Environmental education program carried out at municipal schools <i>Floresta Viva</i> in the municipalities of Montanha and Pedro Canário 	Talks were presented to students in middle school. Language was adapted to the school level of participants, with activities applied with the aim of creating a relaxed environment and increasing information retention. The topics addressed were: environment, biodiversity, the importance of preservation, Suzano's protected areas, environmental monitoring, notification about the beginning of activities and introduction of the program <i>Floresta Viva</i> .	Excel / Socio-environmental management portal	<i>Floresta Viva</i> - Annual Program at schools - Monthly	100% of participants in the environmental education workshops

Aspect	Process Resp.	Monitoring	Indicators	Goal 2022	Actual 2022	Critical analysis	Actions	Systems / Databank	Frequency	Intensity
Environment	Environmental	Programa de Educação Ambiental	Total number of hours of training in the Environmental Education Program (internal)	19 hours	58.28 hours	58.28 hours of training in ES, being 3497 minutes dedicated in 2022, with several audiences and on varied topics of Environmental Education.	Internal actions with onsite and remote training of the program Education for Sustainability in addition to the program Transforming Agents of Sustainability offered on a monthly basis with the participation of all collaborators (own and third party's) of the forestry operational area. The agent applies the environmental dialog seeking to relate the topics with the company's operations, addressing environmental topics in general.	Control of trainings BAMGES/ Portal of socio-environmental management	Monthly	100% of trainings offered
	Forestry	Forestry control	Ant bait consumption	3.70 kg/ha	4.20 kg/ha	Control applied according to the ant infestation from monitoring and recommendation by UP.	-	Technical list; Consolidated with completed activities Forestry		
			Weedkiller Consumption (glyphosate)	1.80 kg/ha	1.57 kg/ha	Reduction of dosage relative to the technical list				
Social	SSQV	SSOMAR	Score obtained with SSOMAR	90%	Result registered individually by a vendor.	SSOMAR assessment aims to assess the company's compliance with legal requirements and is done individually with each of the vendor companies; the expected score is at least 90% of assessed items. When the score is not reached, a plan of actions is defined with deadlines and responsible parts.	<ul style="list-style-type: none"> Creation of and compliance with the SSOMAR timetable. When new companies enter Suzano's operational process, analyze legal items in advance (pre-SSOMAR). 	Portal SSQV / Excel spreadsheet of IGS / SSOMAR form	Biannually	100% of companies with fixed contract

Aspect	Process Resp.	Monitoring	Indicators	Goal 2022	Actual 2022	Critical analysis	Actions	Systems / Databank	Frequency	Intensity
Social	SSOMAR	DNA	Conclusion of deviations on DNA	90%	97%	As in the previous year, in 2022 we observed good adherence to the tool DNA, where facilitators along with Suzano's security team had a key role for the good management of loggings provided by FBU ES and closing the year with 97% of logged DNA managed.	<ul style="list-style-type: none"> • Definition of facilitators for the management of DNA registration within the SDWeb System. • Presentation of indicators results relative to DNA in operational meetings and safety committees. • Organization of DS with operational team to motivate DNA registration. • Conducting meetings with partner companies to enhance DNA management. 	Portal SSQV / Excel spreadsheet of IGS / SSOMAR form	Mensal	100% non-sampling
		OPA	Score obtained with OPA	85%	93.11%	Assessments are carried on a monthly basis, with the possibility of an assessment by the safety technician in the following months in the same company or area of work. Operational teams also developed OPA during the year of 2022 contributing directly to the safety management of operational teams.	<ul style="list-style-type: none"> • Implementation of the application Moki for the development of OPA and follow up of results via BI panel. • Presentation of results monthly in operational and safety forums. 			





COMMUNICATION WITH STAKEHOLDERS

14 COMMUNICATION WITH STAKEHOLDERS

Suzano is constantly in contact with its employees and with the several segments of society, keeping them up to date on its activities, and always keeping things clear, transparent and straightforward.

Among the most commonly used communication media are:

Internal Audience

Corporate social media, Intranet, Printed and Digital newsletters, walls, Forest Podcast, Corporate TV, Manuals and Educational guides.

External Audience

Press Relations, Website, Social media, Visitation programs, Annual reports, Management plan summary. In addition to those, the company maintains other communication channels, as described below.

Communication with specific audiences

Suzano answers

0800 022 1727, (11) 3956-3959 or suzanoresponde@suzano.com.br

If you have any questions, suggestions for improvement, or complaints, please contact us. It is toll-free!

Social media

 Facebook
www.facebook.com/suzanoempresa

 Instagram
www.instagram.com/suzano_oficial

 Youtube
www.youtube.com/user/Suzanovideos

 LinkedIn
www.linkedin.com/company/suzano

Ombudsman Suzano

Brazil
0800 771 40 60 (ligação gratuita)

Abroad
Check specific numbers on the Suzano Ombudsman website.

Email
ouvidoriaexterna@austernet.com.br

Website
<https://ouvidoriaexterna-suzano.com.br>

FBU BA/ES:
0800 283 83 83

Corporate contact:
0800 022 17 27





www.suzano.com.br

