

## A Revision Of The Asiatic Buxus

Hatusima, Sumihiko

Forestry Laboratory, Department of Agriculture, Kyusyu Imperial University

<https://doi.org/10.5109/22593>

---

出版情報：九州大学大学院農学研究院紀要. 6 (6), pp.261-342, 1942-02. Kyushu Imperial University  
バージョン：  
権利関係：

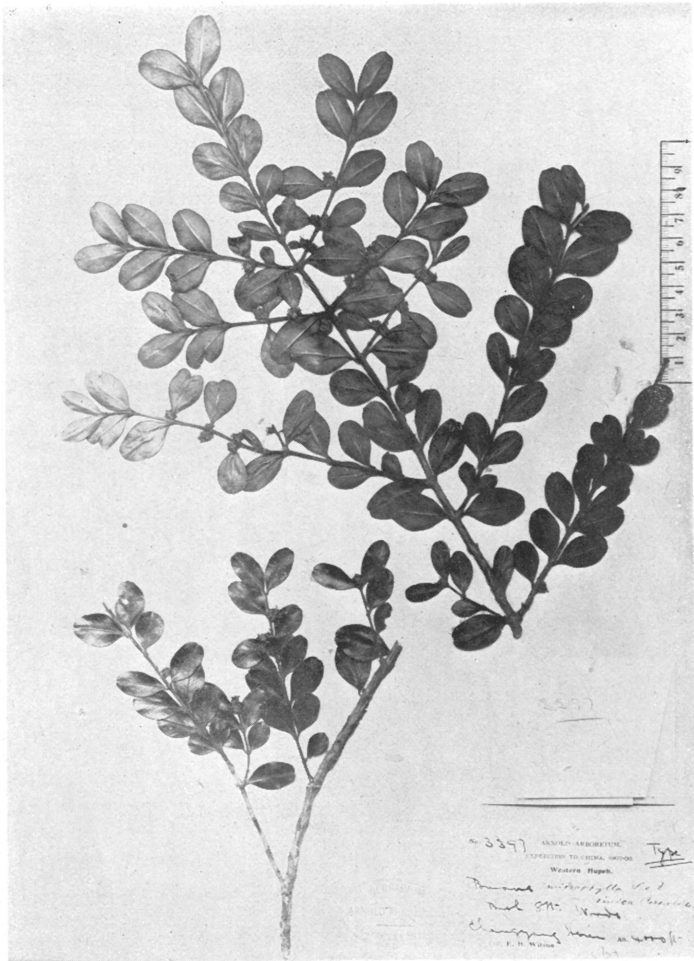


Fig. 1. *Buxus microphylla* subsp. *sinica* HATUSIMA (type of *B. microphylla* var. *sinica* REHDER et WILSON).



Fig. 2. *Buxus rugulosa* HATUSIMA (type).

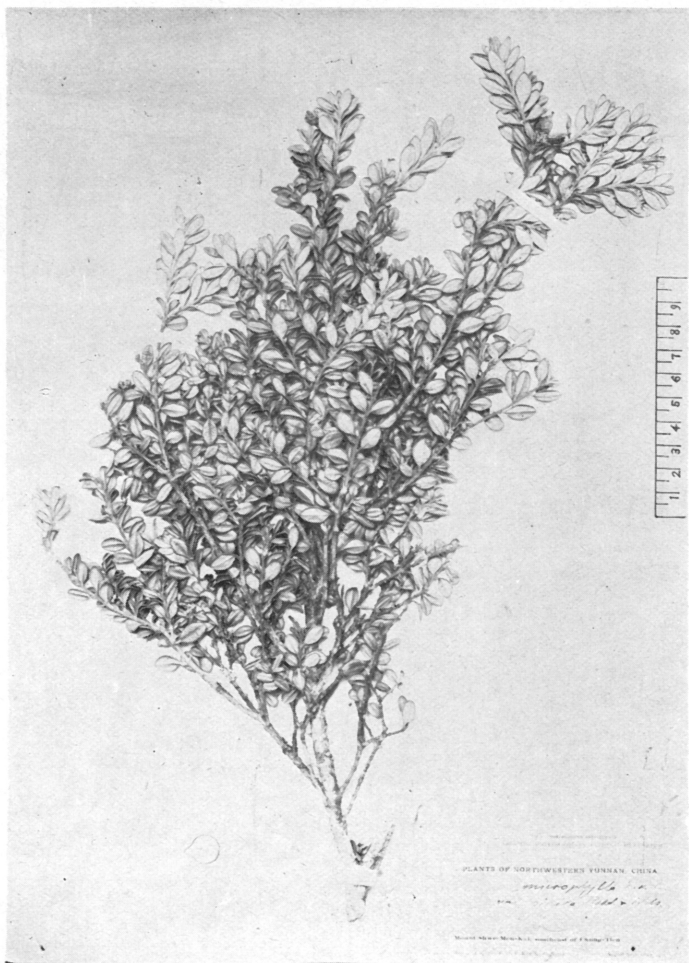


Fig. 1. *Buxus rugulosa* var. *intermedia* HATUSIMA.

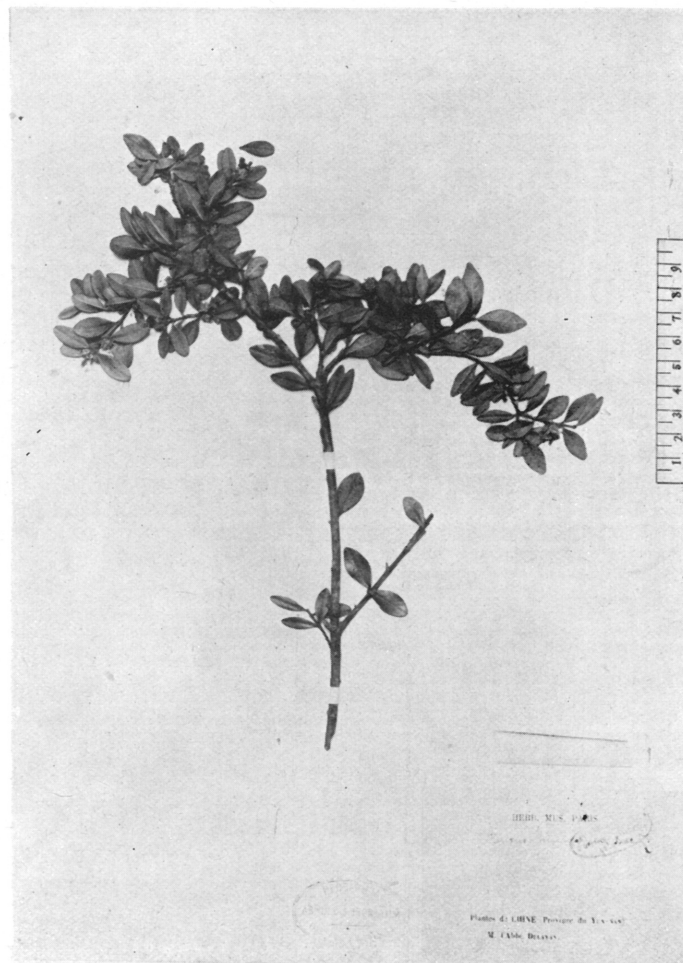


Fig. 2. *Buxus rugulosa* supsp. *rupicola* HATUSIMA  
(DELAVAY, without number).

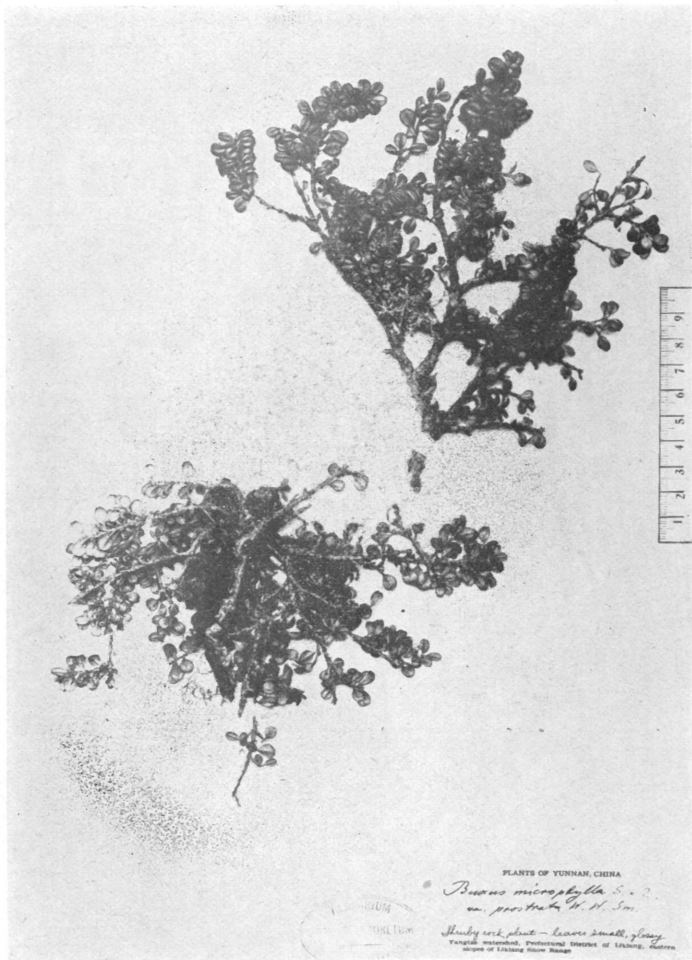


Fig. 1. *Buxus rugulosa* subsp. *prostrata* HATUSIMA  
(Rock, no. 3686 from Yunnan).



Fig. 2. *Buxus rugulosa* subsp. *prostrata* HATUSIMA  
(PARKER, no. 2091 from the Himalayas).





Fig. 1. *Buxus malayana* RIDLEY.



Fig. 2. *Buxus liukiensis* var. *longipedicellata* HATUSIMA (type).

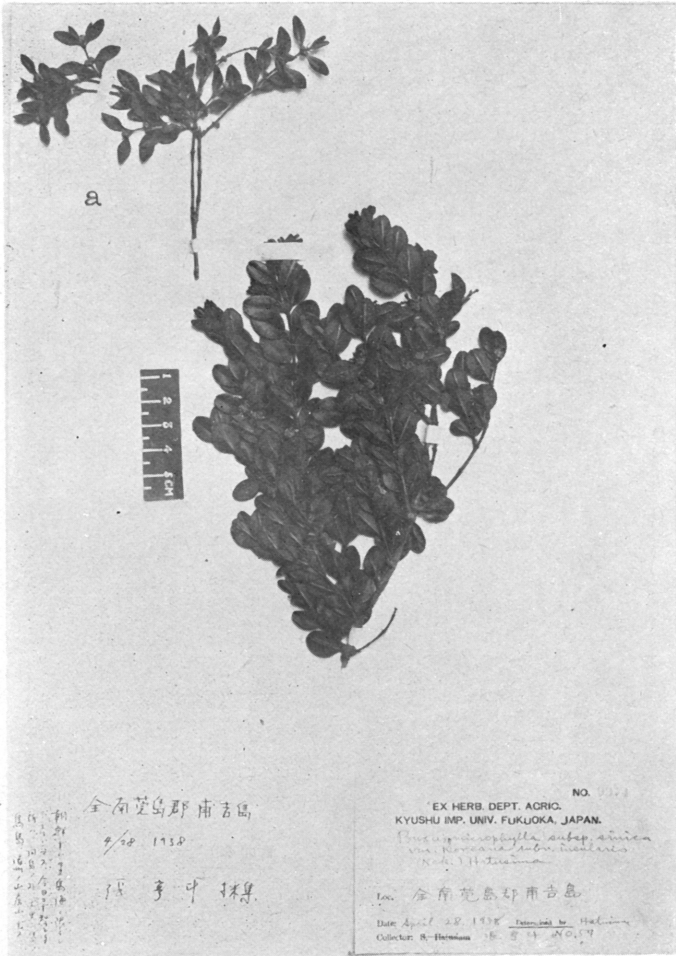
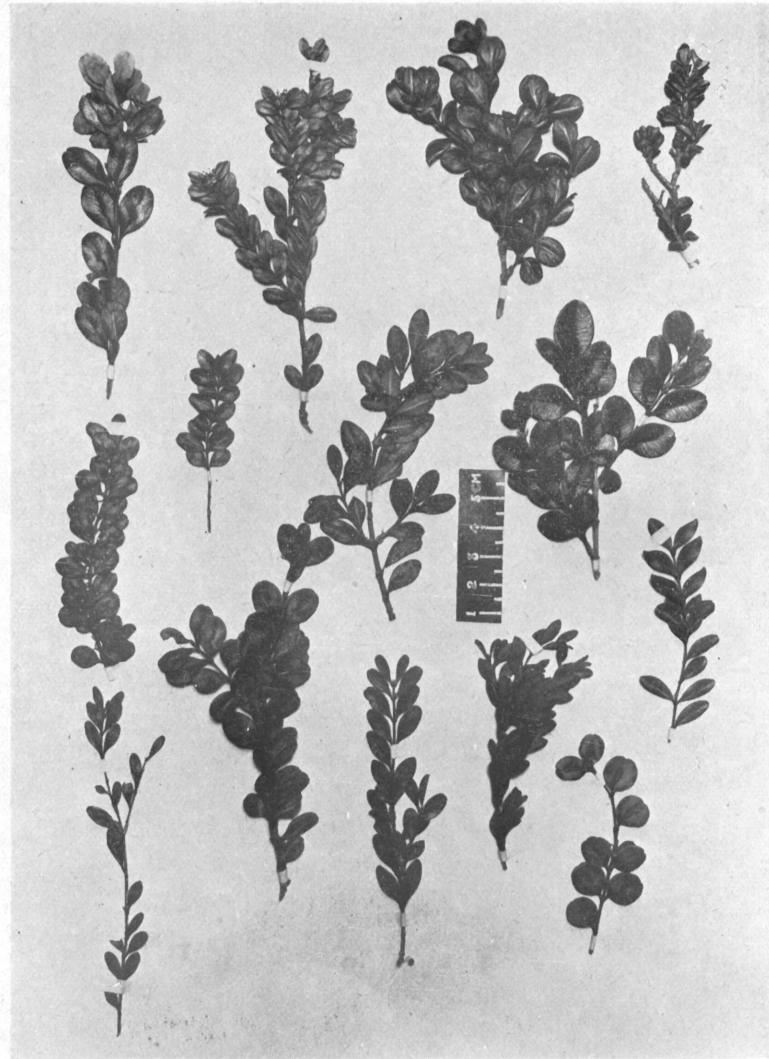


Fig. 1. *Buxus microphylla* subsp. *sinica* var. *insularis* HATUSIMA; a, a form of var. *koreana* REHDER.

Fig. 2. *Buxus rupicola* RIDLEY (type).



Various forms of *Buxus microphylla* var. *japonica* REHDER et WILSON.