

Seville Factfile



Address:

Parque Empresarial Parque Plata.
Calle Camino Empedrado 37-39.
41900. Camas.
Sevilla
Spain



Contact:

Name: Santiago Gil
Telephone: +34 649 449 608
Email: santiagovil@eurofins.com



Team:

Field Technicians: 11 Permanent Staff + 2/3 temporary
Others: Trials Coordinator, System Technician, Study Monitor, Team Administrator,



Field Network:

Farmers: >100
Long Term Land Rentals: 0
Trials Radius: South West and South-Center of Spain

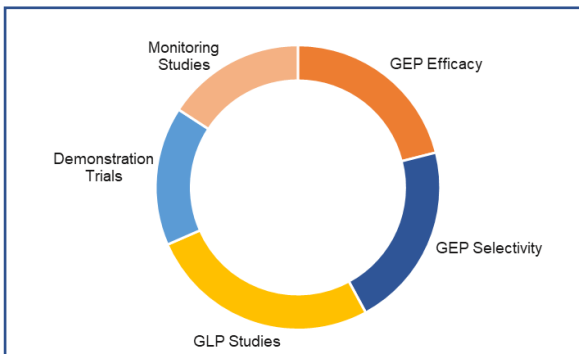


Region: Andalucia
EPPO Zone: Mediterranean
GLP Zone: South

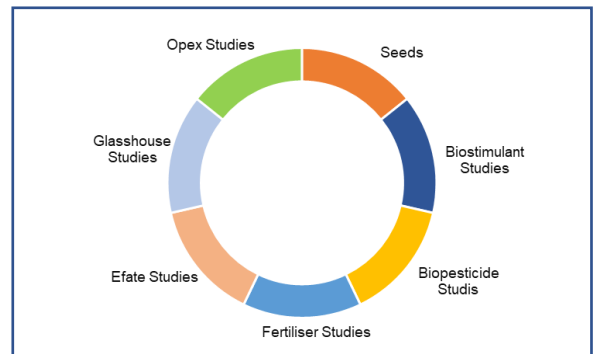


GPS Coordinates: 37,418478, -6,033873

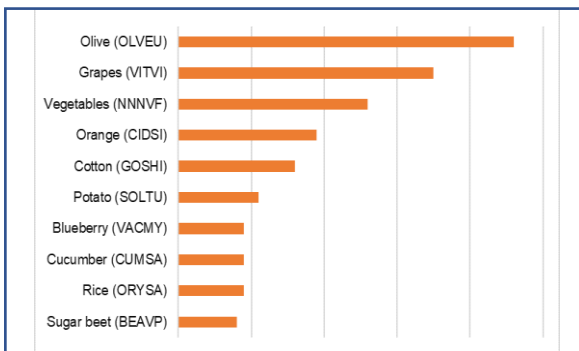
Core Services:



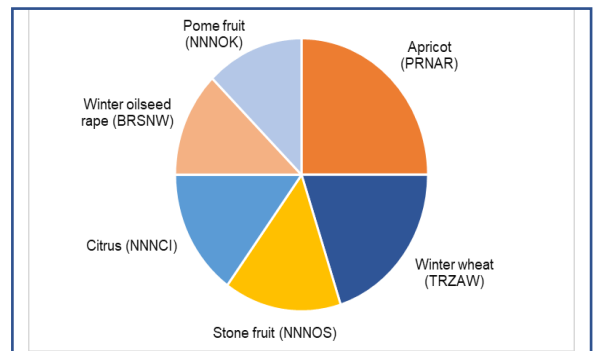
Expert Services:



Top 10 Crops by Trials:



Niche Crops:



Specialist Equipment:



Land Preparation Equipment



Motorized Sprayer



Misting/Irrigation System

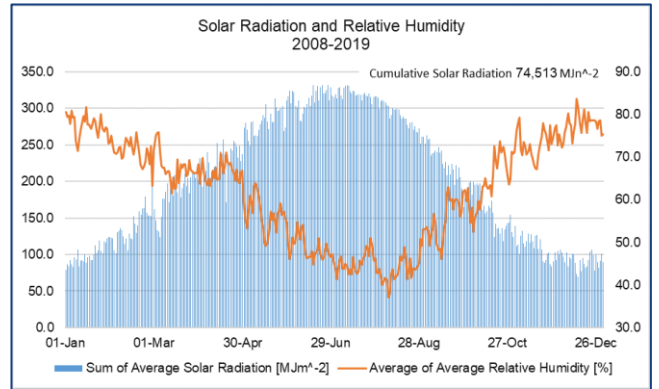
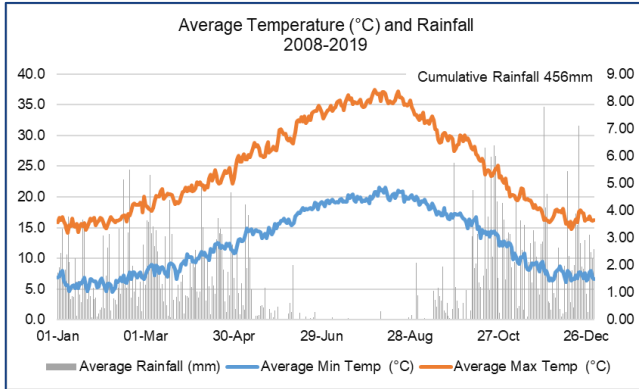


Drill/Planter



GEP / GLP

Climatic Conditions:



Agronomic Practices / Cropping:

Typical Intensive Agriculture, Some mixed farming

Crop Rotation:
Cotton (April-September) followed Cereal (October-May)

Typical Soil Preparation:
Plough, Disc (Harrow), Rotoator, Combination Drill on medium land (soil)

Soil Information:

Typical Soil Types:
Sandy Loam and Sandy Clay Loam

Typical Organic Matter (%): 50-75

Typical Soil Depth (cm): 60-90

Typical PH: 6.0 – 7.0

Typical Cropping in the Region

Drilling/Planting Period \longleftrightarrow Harvest Period \longleftrightarrow

Top 10 Crops	Typical Drill/Seed Rates	Average Crop Yield (T/ha)	Jan	Feb	Mar	Apr	May	Jun	Jul	Aug	Sep	Oct	Nov	Dec	Pest / Disease
Grapes (VITVI)	4200 pls/ha	2-3 Tn/ha													<i>Incinula Necator, Lobesia Botrana, Plasmopara Viticola, Empoasca Vitis, Panonychus Ulmi, Botrytis cinerea</i>
Maize (ZEAMX) grain	20 Kg seed/ ha	3 Tn/ha													
Potato (SOLTU)	2500 kg seed /ha	40-45 Tn/ha													<i>Phytophthora Infestans, Leptinotarsa Decemlineata, Alternaria Solani, , ,</i>
Strawberry (FRAAN)	60000 pl/ha	40 T/ha													<i>Podosphaera aphanis, Botrytis cinerea, Fusarium spp., Nematodes (Hemicyclophora, Meloidogyne, Pratylenchus), Thrips,</i>
Almond (PRNDU)	250 trees/ha	2 500 Kg/ha													<i>Diaporthe amygdali, Polystigma Amygdalinum, Monilia laxa, Tranzschelia discolor, Anarsia lineatella, Myzus persicae</i>
Vegetables (NNNVF)	10000-80000 pls/ha	10-30 Tn/ha													<i>Phytophthora Infestans, Bremia Lactucae, Botrytis Sclerotinia, Trialeurodes Vaporarium, Aphis ssp, Helicoverpa armigera</i>
Citrus (NNNCI)	400 trees/ ha	45 T/ha													<i>Ceratit capitata, Aonidiella auranti, Panonychus citri, Aleurothrix floccosus, Aphis spiraecola, Pezothrips kellyanus</i>
Blueberry (VACMY)	5000 pl/ha	12 T/ha													<i>Drosophila Suzukii, Aphis ssp, Thrips, , ,</i>
Cotton (GOSHI)	20 kg/ha	2500 kg/ha													<i>Aphis sp. , Heliothis armigera, , , ,</i>
Rice (ORYSA)	150 kg seed/ha	6 T/ha													<i>Chilo suppressalis Walker, Pyricularia oryzae, Eysarcoris ventralis, Helminthosporium oryzae, , ,</i>
Cereals	200 kg seed/ha	3 T/ha													<i>Aphis sp. , Septoria cyclaminis , Puccinia graminis, Bulmeria graminis, ,</i>
Olive (OLVEU)	200 trees/ha	8 T/ha													<i>Bractocera oleae, Prays oleae, Spilocaea oleagina, , ,</i>