

Ben Tey names for Plants and Animals

edited by Jeffrey Heath and Steven Moran

This document was created from [Tsammalex](#) on 2015-05-13.

Tsammalex is published under a Creative Commons Attribution 4.0 International License and should be cited as

*Christfried Naumann & Steven Moran & Guillaume Segerer & Robert Forkel (eds.)
2015. Tsammalex: A lexical database on plants and animals. Leipzig: Max Planck
Institute for Evolutionary Anthropology. (Available online at
<http://tsammalex.clld.org>, Accessed on 2015-05-13.)*

A full list of contributors is available at <http://tsammalex.clld.org/contributors>

The list of references cited in this document is available at
<http://tsammalex.clld.org/sources>

Kingdom: Animalia

Phylum: Arthropoda

Class: Arachnida

Order: Prostigmata

Family: Leeuwenhoekiidae

[Dinothrombium tinctorium](#) .

- **bòlú nárⁿà** . "small scarlet-red velvet mite that emerges in fields after rains". Lit. "rain's mother".



(CC) BY © Jeff Heath and the Dogon and Bangime
Languages Project



(CC) BY © Jeff Heath and the Dogon and Bangime
Languages Project

Order: Solifugae

Family: Galeodidae

[Galeodes olivieri](#) Simon, 1879 .

- **lòsô: jô:-m\jô:** . "wind scorpion, sun scorpion". Lit. "feet many".



(CC) BY © Jeff Heath and the Dogon and Bangime
Languages Project



(CC) BY © Jeff Heath and the Dogon and Bangime
Languages Project



(CC) BY © Jeff Heath and the Dogon and Bangime
Languages Project

Class: Chilopoda

Order: Scolopendromorpha

Family: Scolopendridae

[Scolopendra](#) .

- yàgùrô-m mù-mùrⁿù-m\mù-mùrⁿù . "large biting centipede (scolopender)". Lit. "young.woman's scorpion".



(CC) BY © Sam Fraser-Smith



(CC) BY-SA © Matt Reinbold



(CC) BY © Jeff Heath and the Dogon and Bangime Languages Project

Class: Diplopoda

Order: Spirostreptida

Family: Spirostreptidae

[Archispirostreptus](#) .

- gòröm-gómjó-m\gòröm-gómjó . "giant millipede".



(CC) BY © Jeff Heath and the Dogon and Bangime Languages Project



(CC) BY © Jeff Heath and the Dogon and Bangime Languages Project

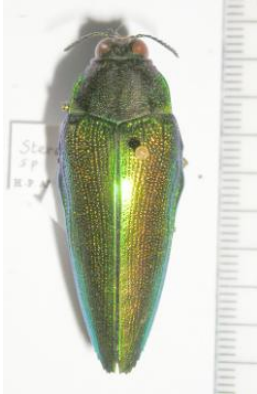
Class: Insecta

Order: Coleoptera

Family: Buprestidae

[Steraspis](#) .

- **késù cǐ-cè:-m\cǐ-cè:** . "buprestid beetle sp. (dark)". Lit. "wooden.box's beetle".



(CC) BY © Jeff Heath and the Dogon and Bangime
Languages Project



(CC) BY-NC-SA © Bernard DUPONT



(CC) BY-NC-SA © Bernard DUPONT

Family: Cetoniidae

[Oplostomus fuligineus](#) (Olivier, 1789) .

- **cǐ-cè: órù-m\órù-yè** . "black cetonid beetle (in flowers of Diospyros)". Lit. "beetle smooth".



(CC) BY-SA ©

[Pachnoda cordata](#) (Drury, 1773) .

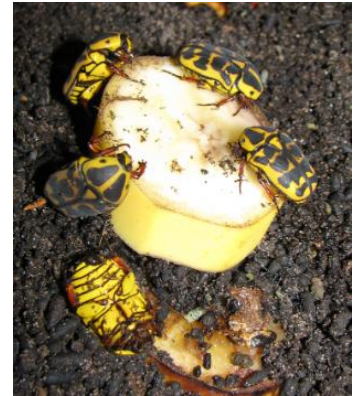
- **cǐ-cè: órù-m\órù-yè** . "millet-eating cetonid beetle sp. (orange with large black blotches)". Lit. "beetle smooth".



(CC) BY © Jeff Heath and the Dogon and Bangime Languages Project



(CC) BY © Jeff Heath and the Dogon and Bangime Languages Project



(CC) BY-SA ©

Rhabdotis sobrina (Gory & Percheron, 1833) .

- **bísēm cí-cè:-m\ \cí-cè:** . "cetonid beetle sp., dark green with white streaks and spots, in sheath in ground (said to eat acacia flowers)". Lit. "acacia's beetle".
- **cĩ-cè: nô:-m\ \nô:** . "cetonid beetle sp., dark green with white streaks and spots, in sheath in ground (said to eat acacia flowers)". Lit. "beetle drink".



(CC) BY © Jeff Heath and the Dogon and Bangime Languages Project



(CC) BY © Jeff Heath and the Dogon and Bangime Languages Project



(CC) BY © Biodiversity Heritage Library

Family: Dynastidae

Phyllognathus burmeisteri Arrow, 1911 .

- **nà:-sùwó cí-cè:-m\ \cí-cè:** . "rhinoceros beetle (male with horn)". Lit. "cow-shit's beetle".



(CC) BY © Jeff Heath and the Dogon and Bangime
Languages Project



(CC) BY © Jeff Heath and the Dogon and Bangime
Languages Project

Family: Scarabaeidae

[Pseudoprotactia stolata](#) .

- **cĩ-cè: nō:-m\\nō:** . "black and white cetonid beetle sp. (in spikes of millet)". Lit. "beetle drink".

Order: Dermaptera

Family: Forficulidae

[Forficula senegalensis](#) Audinet-Serville, 1838 .

- **àsègè-bòrò-jáy**" . "earwig (insect with forked tail)". From Jam "Asege-butt-open" .



(CC) BY © Jeff Heath and the Dogon and Bangime
Languages Project



(CC) BY © Jeff Heath and the Dogon and Bangime
Languages Project

Order: Diptera

Family: Tachinidae

[Sarcophaga](#) .

- **gĩ-gè:" bòmò-gú-m\\-gú** . "large, sluggish flesh fly". Lit. "fly stupid".



(CC) PUBLICDOMAIN © Jan Moravec



(CC) BY-NC-SA © BioImages - the Virtual Fieldguide
(UK)



(CC) BY © Jeff Heath and the Dogon and Bangime
Languages Project

Order: Hemiptera

Family: Belostomatidae

Lethocerus .

- **cĩ-cè: dòrò-kèsú-m\\-kèsú** . "giant water bug". Lit. "beetle penis-cutter".



(CC) BY © Jeff Heath and the Dogon and Bangime
Languages Project



(CC) BY © Jeff Heath and the Dogon and Bangime
Languages Project



(CC) BY © Jeff Heath and the Dogon and Bangime
Languages Project

Family: Coreidae

Anoplocnemis curvipes .

- **nùw"i: cĩ-cè:-m\\ cĩ-cè:** . "tip wilter bug (leaf-footed bug, legume-eating)". Lit. "cowpea's beetle".



(CC) BY © Jeff Heath and the Dogon and Bangime Languages Project

Order: Hymenoptera

Family: Apidae

[Apis mellifera](#) Linnaeus, 1758 .

- âˆ“-m\âˆ“ . "honey bee".



(CC) BY-SA ©



(CC) BY © Treesha Duncan

Family: Crabronidae

[Oxybelus](#) Joergensen, 1905 .

- ĵĭ-ĵĕˆˆ ħĭ-tàˆˆ-m\ħĭ-tàˆˆ . "digger wasp (paralyses flies etc.)". Lit. "fly's scorpion".



(CC) BY © USGS Bee Inventory and Monitoring Lab



(CC) BY-SA ©

Family: Eumenidae

Delta emarginatum (Linnaeus, 1758) .

- ḏ:- [ḵi-jéwⁿ-m] \\ [ḵi-jéwⁿ-è] . "black mud wasp (mud-dauber)". Lit. "chief-black".



(CC) BY-SA ©



(CC) BY © Jeff Heath and the Dogon and Bangime

Languages Project



(CC) BY-SA ©

Polistes .

- àrgàlà mènjè-m \\ mènjé-yè . "brownish paper wasp sp. with yellow cross-bands, nest in leaves". Lit. "wasp thin".



(CC) BY-NC © Biopix



(CC) BY © Miroslav Deml



(CC) BY-NC-SA © Flickr

Family: Formicidae

Camponotus maculatus (Fabricius, 1782) .

- dóyⁿ-jírⁿ-è-m \\ dóyⁿ-jírⁿ-è ~ dón-jírⁿ-è-m \\ dóyⁿ-jírⁿ-è . "honey ant (yellow, fast-moving)".
- [tù-tù:] -kólóró-m \\ -kólóró . "winged form of honey ant".



(CC) BY-SA © April Nobile



(CC) BY © Jeff Heath and the Dogon and Bangime

Languages Project

Messor .

- **cǐ-cèrⁿû-m\cǐ-cèrⁿû:** . "large black grain-eating ant sp. in fields".



(CC) BY-NC-SA © April Nobile



(CC) BY © Jeff Heath and the Dogon and Bangime Languages Project



(CC) BY-NC-SA © April Nobile

Pachycondyla .

- **gù-gòngòrò jéwⁿè-m\jéwⁿè:** . "stinging black ant sp.". Lit. "ant black".



(CC) BY © Jeff Heath and the Dogon and Bangime Languages Project



(CC) BY-NC-SA © April Nobile



(CC) BY-NC-SA © April Nobile

Order: Lepidoptera

Family: Crambidae

Coniesta ignefusalis Hampson, 1919 .

- **yù:-kélè sǐsǐ:-m\sǐ-sǐ:** . "millet stem-borer (snout-moth caterpillar in millet stem)". Lit. "millet-heart's worm".

Family: Sphingidae

Agrius convolvuli Linnaeus, 1758 .

- **wíl-wíl ~ wíli-wíli-m\wíli-wíli:** . "convolvulus hawk-moth (large, makes humming sound)".
- **tǔwé jí-jè:ⁿ-m\jí-jè:ⁿ:** . "large sleek sphingid butterfly chrysalis in plant roots or manure, dark brown with black spots on side, without feet". Lit. "corpse's fly".



(CC) BY © Jeff Heath and the Dogon and Bangime
Languages Project

Order: Mantodea

Family: Empusidae

[Empusa guttula](#) .

- tòrò-gòmbò-yégéré-m\\tòrò-gòmbò-yégéré . "small fast-moving brown empusid mantis in fields".

Family: Eremiaphilidae

[Eremiaphila reticulata](#) .

- kàgàrà-kây tórò-gòmbò-m\\-gòmbò . "fat brown eremiaphilid mantis sp.".

Order: Neuroptera

Family: Myrmeleontidae

[Lachlathetes furfuraceus](#) (Rambur, 1842) .

- nī: jīyè-jīyī-m\\-jīyī . "ant lion sp. (adult) with colored wings". Lit. "water dance-dancer".



(CC) BY © Jeff Heath and the Dogon and Bangime
Languages Project



(CC) BY © Jeff Heath and the Dogon and Bangime
Languages Project



(CC) BY © Jeff Heath and the Dogon and Bangime
Languages Project

Order: Orthoptera

Family: Acrididae

[Acorypha clara](#) .

- ùsù-bór"ò tèm-dùgù-m\\-dùgù-yè . "grasshopper sp."
- "hot.season's ..." . "grasshopper sp."



(CC) BY © Jeff Heath and the Dogon and Bangime
Languages Project

[Acorypha glaucopsis](#) .

- ĵir"ěy" tèm-dùgù-m\\-dùgù . "grasshopper sp.". Lit. "wet.season's ...".



(CC) BY © Jeff Heath and the Dogon and Bangime
Languages Project



(CC) BY © Jeff Heath and the Dogon and Bangime
Languages Project

[Acrotylus blondeli](#) .

- kǐ-kàrà-kāy pètè-pè:-m . "grasshopper sp.". Lit. "gravel Oedaleus".



©

[Aiolopus simulatrix simulatrix](#) .

- pètè-pè:-m\\pètè-pè: . "grasshopper sp."

- **pètè-pè: sùwò ɲě-m\ǀɲě:** . "grasshopper sp.". Lit. "... shit-eater".



(CC) BY © Jeff Heath and the Dogon and Bangime
Languages Project



(CC) BY © Jeff Heath and the Dogon and Bangime
Languages Project

[Anacridium melanorhodon](#) .

- **kĩ-kà: gúrgúsù-m\ǀgúrgúsù** . "grasshopper sp. (tree locust)". Lit. "grasshopper-trap".



(CC) BY © Jeff Heath and the Dogon and Bangime
Languages Project

[Cataloipus cymbiferus](#) .

- **bǎ:-dàw^h-m\ǀdàw^h:** . "grasshopper sp.".



(CC) BY © Jeff Heath and the Dogon and Bangime
Languages Project

[Catantops stramineus](#) .

- **sǎm-pĩrĩ-m\ǀsǎm-pĩrĩ** . "grasshopper sp.".
- **[sǎm-pĩrĩ]-gùlǎ-m\ǀgùlǎ** . "grasshopper sp.". Lit. "... slave".



(CC) BY-SA ©

[Cryptocatantops haemorrhoidalis](#) .

- **sòm-pírĩ-m\\sòm-pírĩ** . "grasshopper sp."
- **sòm-pírĩ árⁿà-m\\árⁿà** . "grasshopper sp.". Lit. "... male".



(CC) BY © Jeff Heath and the Dogon and Bangime Languages Project



(CC) BY © Jeff Heath and the Dogon and Bangime Languages Project



(CC) BY © Jeff Heath and the Dogon and Bangime Languages Project

[Diabolocatantops axillaris](#) .

- **sòm-pírĩ-m\\sòm-pírĩ** . "grasshopper sp."
- **sòm-pírĩ yă-m\\yă** : "grasshopper sp.". Lit. "... female".



(CC) BY © Jeff Heath and the Dogon and Bangime Languages Project



(CC) BY © Jeff Heath and the Dogon and Bangime Languages Project



(CC) BY © Jeff Heath and the Dogon and Bangime Languages Project

[Duronion chloronota](#) .

- **á:rà kí-kà:-m\\kí-kà** : "grasshopper sp."

[Heteracris annulosa](#) .

- **ăn-kásárá-m** \\ **ăn-kásárá** . "grasshopper sp.". Lit. "man-highway.robbing".
- **sǒm kí-kà:-m** \\ **kí-kà:** . "grasshopper sp.". Lit. "horse's grasshopper".



(CC) BY © Jeff Heath and the Dogon and Bangime Languages Project



(CC) BY © Jeff Heath and the Dogon and Bangime Languages Project



(CC) BY © Jeff Heath and the Dogon and Bangime Languages Project

[Heteracris leani](#) .

- **ăn-kásárá-m** \\ **ăn-kásárá** . "grasshopper sp.". Lit. "man-highway.robbing".
- **bǒ:-dàw"â-m** \\ **dàw"â:** . "grasshopper sp.". Lit. "grasshopper sp.". Lit. "horse's grasshopper".



PD ©



(CC) BY-SA ©

[Hieroglyphus daganensis](#) .

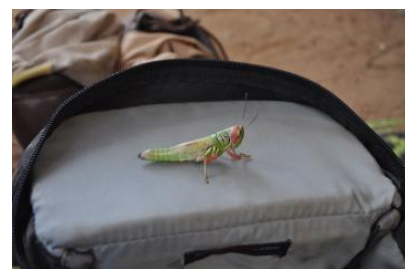
- **yá-bǎ:rà-m** \\ **yá-bǎ:rà** . "grasshopper sp.". Lit. "grasshopper sp.". Lit. "horse's grasshopper".



(CC) BY © Jeff Heath and the Dogon and Bangime Languages Project



(CC) BY © Jeff Heath and the Dogon and Bangime Languages Project



(CC) BY © Jeff Heath and the Dogon and Bangime Languages Project

[Ornithacris cayroisi](#) .

- **kĩ-kà: kórókàsà-m\kórókàsà** . "grasshopper sp."



(CC) BY © Jeff Heath and the Dogon and Bangime Languages Project



PD ©

[Schistocerca gregaria](#) .

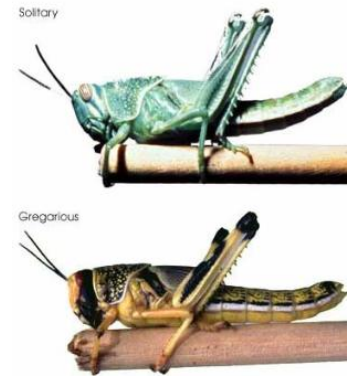
- **kĩ-kà: gúrgúsù-m\gúrgúsù** . "pilgrim locust (solitary phase)". Lit. "grasshopper-trap".



PD ©



Public Domain by



PD NASA ©

[Scintharista notabilis](#) .

- **kĩ-kà: yèřiyă-m\yèřiyă** . "grasshopper sp."
- **pètè-pè: yè:-kú:-m\kú:-** . "grasshopper sp.". Lit. "Oedaleus.grasshopper-sorcerer".



(CC) BY © Jeff Heath and the Dogon and Bangime Languages Project



(CC) BY © Jeff Heath and the Dogon and Bangime Languages Project



PD ©

[Sherifuria haningtoni](#) .

- jěyⁿ kí-kà:-m . "grasshopper sp.". Lit. "Combretum's grasshopper".
- cèpèl-sògó kí-kà:-m\\kí-kà: . "grasshopper sp.". Lit. "Leptadenia.pyrotechnica's grasshopper".



(CC) BY © Jeff Heath and the Dogon and Bangime
Languages Project



(CC) BY © Jeff Heath and the Dogon and Bangime
Languages Project



(CC) BY © Jeff Heath and the Dogon and Bangime
Languages Project

[Sphingonotus canariensis orientalis](#) .

- kǐ-kàrà-kây pètè-pè:-m . "grasshopper sp.". Lit. "gravel Oedaleus".



(CC) BY © Jeff Heath and the Dogon and Bangime
Languages Project



(CC) BY © Jeff Heath and the Dogon and Bangime
Languages Project



(CC) BY © Jeff Heath and the Dogon and Bangime
Languages Project

Family: Gryllidae

[Gryllus bimaculatus](#) .

- òrⁿó: tèm-tàm-tè-m\\tèm-tàm-tè: . "large black cricket". Lit. "outback's cricket".



(CC) BY-SA ©



(CC) BY-NC-SA © Valter Jacinto



PD ©

Family: Pyrgomorphidae

[Atractomorpha acutipennis](#) .

- ògò-yérú yà-púlò-m\\yà-púlò ~ ò:-yérú yàpúlò-m\\yàpúlò . "grasshopper sp."



PD ©

[Chrotogonus senegalensis](#) .

- kǐ-kà: yàmó-m\\-yàmó . "toad grasshopper". Lit. "grasshopper Yamo[woman's name]".
- kǐ-ká: pótópò:-m . "toad grasshopper".



(CC) BY © Jeff Heath and the Dogon and Bangime Languages Project



(CC) BY © Jeff Heath and the Dogon and Bangime Languages Project

[Poecilocerus bufonius hieroglyphicus](#) .

- gù:-gù: kí-kà:-m\\kí-kà: . "grasshopper sp.". Lit. "Calotropis' grasshopper".



(CC) BY © Jeff Heath and the Dogon and Bangime Languages Project



(CC) BY © Jeff Heath and the Dogon and Bangime Languages Project

Phylum: Chordata

Class: Actinopterygii

Order: Characiformes

Family: Alestidae

[Alestes baremoze](#) .

- ǎĩ cèpélù . "silversides (large sardine sp., lower tail orange)".



(CC) BY © Jeff Heath and the Dogon and Bangime
Languages Project

Class: Amphibia

Order: Anura

Family: Bufonidae

[Amietophrynus xeros](#) (Tandy, Tandy, Keith and Duff-MacKay, 1976) .

- èkùnjû-m\\èkùnjû: . "subdesert toad".



(CC) BY © Jeff Heath and the Dogon and Bangime
Languages Project



(CC) BY © Jeff Heath and the Dogon and Bangime
Languages Project



(CC) BY © Jeff Heath and the Dogon and Bangime
Languages Project

Family: Dicroglossidae

[*Hoplobatrachus occipitalis*](#) (Günther, 1858) .

- èkùnjû-m\èkùnjû: . "groove-crowned bullfrog".



(CC) BY © Jeff Heath and the Dogon and Bangime
Languages Project



(CC) BY © Jeff Heath and the Dogon and Bangime
Languages Project



(CC) BY © Jeff Heath and the Dogon and Bangime
Languages Project

Class: Aves

Order: Accipitriformes

Family: Accipitridae

[*Accipiter badius*](#) (Gmelin, 1788) . Characteristics: carnivore; body-length: 28-30 cm; grey plumage above; russet barring below; yellow legs and cere. ([Sinclair 1994](#): 86)

- tĩ-tè sě:rè-m . "shikra (sparrowhawk)".



(CC) BY-SA © Ravi Vaidyanathan



(CC) BY-SA © J.M.Garg

[*Buteo auguralis*](#) Salvadori, 1865 .

- tĩ-tè sě:rè-m . "red-necked buzzard (eats lizards)".



(CC) BY ©

[Gyps rueppellii](#) (A. E. Brehm, 1852) . Characteristics: carnivore; body-length: 115 cm, brown plumage; wings with dark flight feathers and pale linings. ([Sinclair 1994](#): 70)

- **tè-dùwš-m** \\ **tè-dùwó** . "Rueppell's griffon vulture".



PD ©



(CC) BY-NC-SA © Gerald and Buff Corsi



PD ©

[Melierax metabates](#) Heuglin, 1861 . Characteristics: carnivore; body-length: 50-56 cm; grey plumage; bared white rump; grey secondaries red to orange bill and legs . Biotope: woodland. ([Sinclair 1994](#): 84)

- **tè-îrà-m** \\ **tè-îrà** . "dark chanting goshawk (takes guinea-fowl)". Lit. "hawk-brown.and.white".



(CC) BY © John R Whitaker



(CC) BY-SA ©



(CC) BY-NC-SA © Bernard DUPONT

Micronisus gabar (Daudin, 1800) . Characteristics: carnivore; body-length: 30-34 cm; grey throat and breast; reddish legs and cere; grey wings. Biotope: woodland. ([Sinclair 1994](#): 86)

- **tĩ-tè sě:rè-m** . "gabar goshawk".



(CC) BY © Neil Strickland



PD US ©



(CC) BY ©

Milvus migrans (Boddaert, 1783) . Characteristics: carnivore; body-length: 56 cm; long forked tail; dark plumage. ([Sinclair 1994](#): 88)

- **jèmbè-kómbó-m\\kómbó** . "kite (hawk)".



(CC) BY-SA © Thomas Kraft



(CC) BY-NC © inaturalist



(CC) BY-SA ©

Necrosyrtes monachus (Temminck, 1823) . Characteristics: carnivore; body-length: 70 cm; brown plumage; bare head with red skin. ([Sinclair 1994](#): 72)

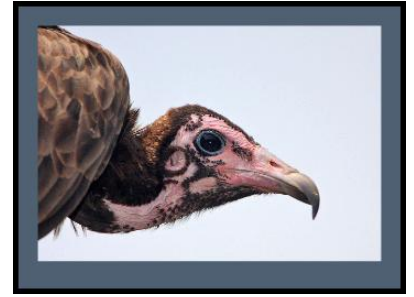
- **gàmdú-m** . "hooded vulture".



(CC) BY-SA © Atamari



(CC) BY-NC © Scott Bowers



(CC) BY-NC-SA © Steve Garvie

[Neophron percnopterus](#) (Linnaeus, 1758) . Characteristics: carnivore; body-length: 62 cm; white plumage; wings with black primaries; white tail. ([Sinclair 1994](#): 72)

- **púlò-m bé:-sógó-m\bé:-sógó** . "Egyptian vulture". Lit. "Fulbe shit-peck".



PD ©



(CC) BY-SA © Kousik Nandy



(CC) BY ©

Order: Anseriformes

Family: Anatidae

[Dendrocygna viduata](#) (Linnaeus, 1766) . Characteristics: herbivore; body-length: 48 cm; black head with white face; brown plumage; dark belly; blue-tipped black bill. Biotope: freshwater. ([Sinclair 1994](#): 64)

- **tàwèrè-pélé-m\pélé** . "white-faced whistling duck".



(CC) BY-NC © Gabriela F. Ruellan



(CC) BY-SA ©

[Sarkidiornis melanotos](#) (Pennant, 1769) . Characteristics: omnivore; body-length: 65 - 80 cm, black and white plumage; speckled grey head; male larger than female; in breeding season the male has a large comb on the bill. Biotope: freshwater. ([Sinclair 1994](#): 64)

- **tàwèrè bē:ŋ** . "knob-billed goose".



(CC) BY ©



(CC) BY-SA ©



(CC) BY-SA © Lip Kee

Order: Apodiformes

Family: Apodidae

[Apus affinis](#) (J. E. Gray, 1830) .

- **gĩ-gĩsĩ-m** \\ **gĩ-gĩsĩ** . "little African swift".
- **gĩ-gĩsĩ wéré-wéré-m** \\ **wéré-wéré** . "little African swift".



(CC) MARK © creator:Thomas Hardwicke

Order: Bucerotiformes

Family: Bucerotidae

[Tockus erythrorhynchus](#) (Temminck, 1823) .

- ḏ:-dḏ:-m\\-dḏ: . "red-billed hornbill". Lit. "chief-...".
- tíŋḡḡ:-m\\tíŋḡḡ: . "red-billed hornbill".



(CC) BY-NC © ellisms



(CC) BY-SA © Mehmet Karatay



(CC) BY © Biodiversity Heritage Library

[Tockus nasutus](#) (Linnaeus, 1766) .

- ḏ:-dḡ: sèrí-m\\sèrú . "grey hornbill".



(CC) BY-NC © inaturalist



(CC) BY-SA © Lip Kee from Singapore, Republic of Singapore



(CC) BY © Biodiversity Heritage Library

Family: Bucorvidae

[Bucorvus abyssinicus](#) (Boddaert, 1783) .

- **jìrè jéwⁿ-è-m\jéwⁿ-è** . "Abyssinian ground hornbill" . Lit. "eye black" .



(CC) BY © Jeff Heath and the Dogon and Bangime Languages Project

Order: Charadriiformes

Family: Burhinidae

[Burhinus capensis](#) (Lichtenstein, 1823) .

- **kàtà-kǎ:-m\kǎ:** . "spotted thick-knee" .



(CC) BY-SA © Jutta ? unknown



(CC) BY-SA © Cburnett?



(CC) BY © Jeff Heath and the Dogon and Bangime Languages Project

Family: Charadriidae

[Vanellus tectus](#) (Boddaert, 1783) .

- **cèwⁿ-cèrⁿéwⁿ-m\cèwⁿ-cèrⁿéwⁿ ~ cèⁿ-cèrⁿéwⁿ-m\cèⁿ-cèrⁿéwⁿ** . "black-headed lapwing (plover)" .



(CC) BY-NC-SA © Bernard DUPONT



(CC) MARK © ChriKo



(CC) BY © Noel Reynolds

Family: Glareolidae

[*Rhinoptilus chalcopterus*](#) (Temminck, 1824) .

- ɲàrⁿù-ènjà-m \\-ènjà: . "bronze-winged courser". Lit. "night-chicken".



Public Domain by Nicolas Huet



(CC) BY-NC-SA © Bart Wursten

Family: Jacanidae

[*Actophilornis africanus*](#) (Gmelin, 1789) . Characteristics: carnivore; body-length: 28 cm; red-brown body; white throat; yellow breast; black neck; blue bill and forehead. Biotope: flooded grassland, freshwater. ([Sinclair 1994](#): 102)

- dɛ:- [sɪ-sɪ:-m] \\- [sɪ-sɪ:] . "jacana".



(CC) BY ©



(CC) BY-SA ©

Family: Recurvirostridae

[Himantopus himantopus](#) (Linnaeus, 1758) .

- àrⁿà-mòrǎ-m\àrⁿà-mòró . "black-winged stilt". Lit. "man-spring[water]".



(CC) BY-SA © Alnus



(CC) BY © Jeff Heath and the Dogon and Bangime

Languages Project

Order: Ciconiiformes

Family: Ciconiidae

[Ciconia abdimii](#) Lichtenstein, 1823 . Characteristics: carnivore; body-length: 76 cm; black plumage; white lower back and rump; greenish bill and legs;. ([Sinclair 1994](#): 58)

- ò:-tô:-m\ò:-tô: . "Abdim's stork". Lit. "chief-slash.to.sow".



Public Domain by Taa DoBeS team
(Boden/Güldemann/Naumann)



Public Domain by Taa DoBeS team
(Boden/Güldemann/Naumann)



Public Domain by Taa DoBeS team
(Boden/Güldemann/Naumann)

[*Leptoptilos crumeniferus*](#) (Lesson, 1831) . Characteristics: carnivore; body-length: 150 cm; white body, black wings; naked head and neck; large, pointy bill; whitish legs. ([Sinclair 1994](#): 58)

- àrⁿà-wǎ:ⁿ-m \\ -wǎ:ⁿ . "marabou stork".



(CC) BY-SA © Ltshears



(CC) BY-SA © unknown (User:Cacophony)

Order: Columbiformes

Family: Columbidae

[*Columba guinea*](#) Linnaeus, 1758 .

- gò:ⁿ ìnjírí-m \\ ìnjírí . "speckled pigeon".



(CC) BY-SA © unknown (Ltshears)



(CC) BY-SA © unknown (ChriKo)

Columba livia Gmelin, 1789 .

- **gò:ⁿ jéwⁿ-è-m\jéwⁿ-è** . "rock pigeon, rock dove". Lit. "pigeon black".
- **gǎ:ⁿ-m\gǎ:ⁿ** . "pigeon (domestic)".
- **gò:ⁿ píl-è-m\píl-è** . "pigeon (domestic)". Lit. "pigeon white".



(CC) BY-SA © Mike Pennington



(CC) BY-SA © J.M.Garg

Oena capensis (Linnaeus, 1766) .

- **sà-sélé-m\sà-sélé** . "long-tailed pigeon, namaqua dove".



(CC) BY-SA © Lip Kee from Singapore, Republic of Singapore



(CC) BY-NC-SA © David Blank



http://en.wikipedia.org/wiki/public_domain © C. G.

Finch-Davies (1875-1920)

Streptopelia senegalensis (Linnaeus, 1766) .

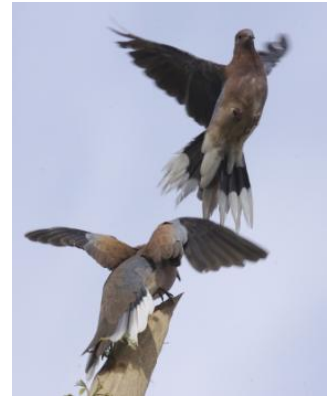
- **péré-girè-m\gìrè:** . "laughing dove".
- **péli-girè-m\gìrè:** . "laughing dove".



(CC) BY-SA ©



(CC) BY-SA © Lip Kee



(CC) BY-SA ©

[Streptopelia vinacea](#) (Gmelin, 1789) .

- **pèrè-gìrè gú-gũ:-m\\gú-gũ:** . "doves with black nape rings (vinaceous dove; mourning dove)". Lit. "dove onomat."
- **pèrè-gìrè [kòró jéwⁿè-m]\\jéwⁿè]** . "doves with black nape rings (vinaceous dove; mourning dove)". Lit. "dove neck-black".



(CC) BY ©

Order: Coraciiformes

Family: Coraciidae

[Coracias abyssinicus](#) Hermann, 1783 .

- **bă:-kõ:-m\\bă:-kõ:** . "Abyssinian roller". Lit. "father onomat."
- **bà:-kò: sámbà-ǰállâ:y-m\\bà:-kò: sámbà-ǰállâ:** . "Abyssinian roller".



PD ©



(CC) BY-SA ©

Family: Meropidae

[*Merops albicollis*](#) Vieillot, 1817 .

- sé:rⁿè nĩ:yⁿi-m \\nĩ:yⁿi . "white-throated bee-eater". Lit. "sandy plain's bird".



(CC) BY © Ron Knight from Seaford, East Sussex,
United Kingdom



(CC) BY-SA ©



(CC) BY © Gerhard Singer

Order: Cuculiformes

Family: Cuculidae

[*Centropus senegalensis*](#) (Linnaeus, 1766) .

- èndè-bòrú-m \\-bòrú . "Senegal coucal". Lit. "Ende[name] lazy".



(CC) BY © ThomHasi



(CC) BY © Jeff Heath and the Dogon and Bangime
Languages Project

Order: Falconiformes

Family: Falconidae

[*Falco alopex*](#) (Heuglin, 1861) .

- òrⁿḍ:- [kĩ-kē:-m] . "fox-kestrel".



(CC) BY-SA ©



Public Domain by



(CC) BY-NC © inaturalist

Falco chicquera Daudin, 1800 . Characteristics: carnivore; body-length: 30-36 cm, chestnut head and nape; dark brown moustach-like patches on the face; black and white barred belly; white throat; grey tail with black band. Biotope: savanna, dry area; river course. ([Sinclair 1994](#): 90)

- **tè-îrà-m\ -îrà** . "red-necked falcon (takes guinea-fowl)". Lit. "hawk-brown.and.white".



(CC) BY © Koshy Koshy



(CC) BY-SA © Peter Last



(CC) BY © Jeff Heath and the Dogon and Bangime Languages Project

Falco peregrinus Tunstall, 1771 . Characteristics: carnivore; body-length: 34-38 cm, black forehead and crown; black moustach-like marks in the face; white underside speckled with black. Biotope: rocky area. ([Sinclair 1994](#): 88)

- **tè-kilà-m** . "peregrine falcon".



(CC) BY-SA © Carl Mueller



(CC) BY-SA © Keven Law



Public Domain by Naumann

Falco tinnunculus Linnaeus, 1758 . Characteristics: carnivore; body-length: 33-39 cm, chestnut back with black spots; grey head; barred and spotted underwing. Biotope: rocky area, mountains. ([Sinclair 1994](#): 92)

- **ĩ-tê-m//ĩ-tê:** . "rock kestrel".



(CC) BY-SA ©



(CC) BY-SA ©



(CC) BY-SA ©

Order: Galliformes

Family: Numididae

Numida meleagris (Linnaeus, 1758) . Characteristics: omnivore; body-length: 56 cm; grey plumage with white dots; blue and red skin on the head. Biotope: grassland, woodland. ([Sinclair 1994](#): 102)

- **õ:-m\\õ:** . "guinea-fowl".



(CC) BY-SA ©



(CC) BY © Jeff Heath and the Dogon and Bangime Languages Project



(CC) BY © Chris Eason

Family: Phasianidae

Francolinus .

- sù:-m\\sù: . "francolin".



(CC) BY ©



(CC) PUBLICDOMAIN © Stolz, Gary M.



Public Domain by

Ptilopachus petrosus (Gmelin, 1789) .

- t̀̀r̀̀-ẁ̀àng̀̀èr̀̀è-m\\ẁ̀àng̀̀èr̀̀è . "stone partridge". Lit. "mountain-waddling".



(CC) BY-SA ©



(CC) BY © Jeff Heath and the Dogon and Bangime Languages Project



(CC) BY © Jeff Heath and the Dogon and Bangime Languages Project

Order: Gruiformes

Family: Gruidae

[Balearica pavonina](#) (Linnaeus, 1758) .

- sèrù-kùwⁿǎ-m\\sèrù-kùwⁿá . "crowned crane".



Public Domain by



(CC) BY ©

Family: Otididae

[Eupodotis senegalensis](#) (Vieillot, 1820) .

- kàwⁿ-kàrⁿáwⁿ-m\\kàwⁿ-kàrⁿá: . "white-bellied (= Senegal) bustard".



(CC) BY-SA © Lip Kee



(CC) BY-SA ©



(CC) MARK © Creator:Claude Gibney Finch-Davies

Order: Passeriformes

Family: Alaudidae

[Calandrella brachydactyla](#) (Leisler, 1814) .

- nĩ:yⁿi sàyǎ-m\\sàyá . "greater short-toed lark".



Public Domain by



(CC) BY-SA ©



(CC) BY-NC © inaturalist

[*Pinarocorys erythropygia*](#) (Strickland, 1852) .

- **nĩ:y"i sàyă-m\\sàyá** . "rufous-rumped bush-lark".



Public Domain by

Family: Cisticolidae

[*Spiloptila clamans*](#) (Cretzschmar, 1826) .

- **[kǎ: lè] ìré-m** . "cricket warbler". From Jam "I am bigger than a grasshopper" .
- **nĩ:y"i kètè-kě:-m\\kètè-kě:** . "cricket warbler". Lit. "bird runty".



(CC) BY © Jeff Heath and the Dogon and Bangime Languages Project



(CC) BY © Jeff Heath and the Dogon and Bangime Languages Project



Public Domain by

Family: Corvidae

[Corvus albus](#) Statius Muller, 1776 .

- **gí-gǎ:ⁿ-m\gí-gǎ:ⁿ** . "pied crow".



(CC) BY-SA © Thomas Schoch



(CC) BY-SA © Myburgh

[Corvus ruficollis](#) Lesson, 1831 .

- **gǐ-gà:ⁿ jéwⁿè-m\jéwⁿè** . "black crow". Lit. "crow black".



(CC) MARK © G. G. White – delineator. W. H. Dougal – engraver



(CC) BY-SA © Lip Kee Yap



(CC) BY-NC © Biopix

[Ptilostomus afer](#) (Linnaeus, 1766) .

- **bǎ:-kǐ-kǒ:-m\bǎ:-kǐ-kǒ: ~ bǎ:-kǒ:-m\bǎ:-kǒ:** . "piapiac (magpie)". Lit. "father-...".



(CC) BY-SA ©



(CC) BY © Jeff Heath and the Dogon and Bangime Languages Project



(CC) BY-SA ©

Family: Estrildidae

[Amadina fasciata](#) (Gmelin, 1789) .

- **nĩ:y"ĩ kòrò-bár"à-m\\bár"à** . "cut-throat finch". Lit. "bird neck-red".



(CC) BY © Jeff Heath and the Dogon and Bangime Languages Project



(CC) BY © Jeff Heath and the Dogon and Bangime Languages Project

[Lonchura cantans](#) (Gmelin, 1789) .

- **nĩ:y"ĩ pílè-m\\pílè** . "warbling silverbill". Lit. "bird white".



(CC) BY-SA ©



(CC) BY © Jeff Heath and the Dogon and Bangime Languages Project



(CC) BY-NC © inaturalist

[Uraeginthus bengalus](#) (Linnaeus, 1766) .

- ðr^ó: ní:y^í-bǐnà-m\\bǐnà . "red-cheeked cordon-bleu". Lit. "outback's bird-totem".



(CC) BY ©



(CC) BY-SA ©



Public Domain by

Family: Hirundinidae

[Ptyonoprogne fuligula pusilla](#) (Zedlitz, 1908) .

- gǐ-gǐsǐ-m\\gǐ-gǐsǐ . "rock martin (swallow)".
- gǐ-gǐsǐ wéréwéré-m\\wéréwéré . "rock martin (swallow)".



(CC) BY © Jeff Heath and the Dogon and Bangime
Languages Project



(CC) BY © Jeff Heath and the Dogon and Bangime
Languages Project



(CC) BY © Jeff Heath and the Dogon and Bangime
Languages Project

Family: Muscicapidae

[Cercotrichas podobe](#) (Statius Muller, 1776) .

- gòròwóró ní:y^í-m\\ní:y^í . "black scrub-robin". Lit. "Goroworo.oued's bird".



(CC) BY-SA ©

[*Myrmecocichla aethiops*](#) Cabanis, 1850 .

- sé:nè nǐ:y^{fi}-m . "northern anteater-chat". Lit. "sandy plains-bird".



(CC) BY-SA ©



(CC) BY-NC-SA © Gerald and Buff Corsi



(CC) BY-SA ©

Family: Nectariniidae

[*Nectarinia pulchella*](#) (Linnaeus, 1766) .

- òmdô: nǐ:y^{fi}-m \nǐ:y^{fi} . "beautiful (=long-tailed) sunbird". Lit. "tamarind's bird".



(CC) BY © Bob



(CC) BY © Biodiversity Heritage Library



(CC) BY © Jeff Heath and the Dogon and Bangime Languages Project

Family: Passeridae

[Passer griseus](#) (Vieillot, 1817) .

- **nĩ:y"i pĩlè dũgú-m\\dũgú-yè** . "grey-headed sparrow". Lit. "bird white big".



(CC) BY-SA ©



(CC) BY © Jeff Heath and the Dogon and Bangime
Languages Project



(CC) BY-SA © Tom Tarrant

Family: Ploceidae

[Bubalornis albirostris](#) (Vieillot, 1817) .

- **bĩrà:ndõŋú-m\\bĩrà:ndõŋ** . "white-billed buffalo-weaver".



(CC) BY © Jeff Heath and the Dogon and Bangime
Languages Project



(CC) BY © Jeff Heath and the Dogon and Bangime
Languages Project

[Euplectes franciscanus](#) (Isert, 1789) .

- **nĩ:y"i búrú-músú:rè-m\\búrú-músú:rè ~ nĩ:y"i gúrú-músú:rè-m\\gúrú-músú:rè** . "northern red bishop (bird)".
Lit. "bird Muslim.veil".



(CC) BY © Jeff Heath and the Dogon and Bangime Languages Project



(CC) BY-SA ©



(CC) BY © Jeff Heath and the Dogon and Bangime Languages Project

[Ploceus cucullatus](#) (Statius Muller, 1776) .

- **pòrú-yòlò-m\\-yòlò** . "village weaver (bird)".



(CC) BY © Simon J. Tonge



(CC) BY © Simon J. Tonge



(CC) BY © Simon J. Tonge

[Ploceus luteolus](#) (Lichtenstein, 1823) .

- **bàr-kòmbǎ-m\\bàr-kòmbó** . "little weaver, slender-billed weaver (bird)".



(CC) BY-NC © Scott Bowers



(CC) BY © Joaquim Grave

[Quelea quelea](#) (Linnaeus, 1758) .

- **bùrúgù nǐ:y"i-m\\nǐ:y"i** . "black-faced dioch (bird)". Lit. "Bourgou.village's bird".



(CC) BY © Pawel Ryszawa



(CC) MARK © Creator:John Gerrard Keulemans



(CC) BY-SA © Alastair Rae

[Sporopipes frontalis](#) (Daudin, 1800) .

- kàgàrà-kǎy [kù: pǐlè-m] \\pǐlè . "scaly-fronted (speckle-fronted) weaver". Lit. "gravel's head white".
- kàgàrà-kǎy [kù: pèrù-m] \\pèrù . "scaly-fronted (speckle-fronted) weaver". Lit. "gravel's head hard".



(CC) BY-SA ©



(CC) BY-SA ©



PD ©

Family: Pycnonotidae

[Pycnonotus barbatus](#) (Desfontaines, 1789) .

- nǐ:y'í màngòrò-sǎgú-m \\-sǎgú . "bulbul". Lit. "bird mango-pecker".



(CC) BY © Valentina



(CC) BY-SA © Lip Kee Yap



Author died more than 70 years ago public domain
images ©

Family: Sturnidae

[Buphagus africanus](#) Linnaeus, 1766 .

- **nă: ní:y^ɪ-m\ \ní:y^ɪ** . "oxpecker (bird)". Lit. "cow's bird".



(CC) BY-SA © Steve Garvie from Dunfermline, Fife, Scotland



(CC) BY-SA © Steve Garvie from Dunfermline, Fife, Scotland



(CC) BY © Biodiversity Heritage Library

[Lamprotornis caudatus](#) (Statius Muller, 1776) .

- **bà: dúrð-gúrð-m\ \-gúrð** . "long-tailed glossy starling". Lit. "father tail-long".
- **bà:-kò: jèwⁿè dúrð-gúrð-m\ \-gúrð** . "long-tailed glossy starling". Lit. "starling black tail-long".



(CC) BY-SA © Salix



(CC) BY © Thom Haslam



(CC) BY © Biodiversity Heritage Library

[Lamprotornis chalybaeus](#) Hemprich & Ehrenberg, 1828 .

- **bà:-kò: jèwⁿè dúrð-gǔ:-m\ \gǔ:** . "greater blue-eared starling (= blue-eared glossy starling)". Lit. "starling black tail-short".



(CC) BY © Jeff Heath and the Dogon and Bangime Languages Project



(CC) BY © Jeff Heath and the Dogon and Bangime Languages Project



(CC) MARK © creator: Joseph Smit. Richard Bowdler Sharpe (text)

Family: Sylviidae

[Eremomela pusilla](#) Hartlaub, 1857 .

- **kǎ: lè ĩré-m** . "Senegal eremomela, green-backed warbler" . From Jam "I am bigger than a grasshopper" .



(CC) BY © Jeff Heath and the Dogon and Bangime Languages Project

Family: Viduidae

[Vidua chalybeata](#) (Statius Muller, 1776) .

- **ñĩ:yñĩ sé:kù-m \\ sé:kù** . "village indigobird" .



(CC) BY-NC-SA © David Blank



(CC) BY-SA © Hectonichus



(CC) BY © Jeff Heath and the Dogon and Bangime Languages Project

[Vidua macroura](#) (Pallas, 1764) .

- **ñĩ:yñĩ dúrò-gúrò-m \\ -gúrò** . "pin-tailed whydah (esp. breeding male)" . Lit. "bird tail-long" .



(CC) BY-SA © Anonymous



(CC) BY-NC © Flickr



(CC) BY-NC © Mike Comber

Order: Pelecaniformes

Family: Ardeidae

[*Bubulcus ibis*](#) (Linnaeus, 1758) . Characteristics: carnivore; body-length: 54 cm; white and light brown plumage; yellow bill; breeding bird has a red bill; often found in association with cattle. Biotope: grassland. ([Sinclair 1994](#): 54)

- **káŋ-kògò-bírĩ-m\\-bírĩ** . "cattle egret".



(CC) BY-SA © Atamari



(CC) BY-SA © Atamari



(CC) BY © Jeff Heath and the Dogon and Bangime Languages Project

Order: Pteroclidiformes

Family: Pteroclididae

[*Pterocles exustus*](#) Temminck, 1825 .

- **sùpúrúgú-m** . "chestnut-bellied sandgrouse".



(CC) BY-NC-SA © David Bygott



Public Domain by



Public Domain by

Order: Strigiformes

Family: Caprimulgidae

[Caprimulgus tristigma](#) Rüppell, 1840 .

- sò púrgú-m\\púrgú . "nightjar, freckled". Lit. "horse grey".



Public Domain by



(CC) BY ©

Family: Strigidae

[Bubo cinerascens](#) Guerin-Meneville, 1843 .

- èdùnù jǐngě-m . "vermiculated (or: greyish) eagle-owl". Lit. "owl-...".



(CC) BY © Jeff Heath and the Dogon and Bangime Languages Project



(CC) BY © Jeff Heath and the Dogon and Bangime Languages Project



(CC) BY © Jeff Heath and the Dogon and Bangime Languages Project

Glaucidium perlatum (Vieillot, 1817) .

- èdùnù-pélé-m\pélé . "pearl-spotted owlet". Lit. "owl-..." .



(CC) BY-SA © Derek Ramsey



(CC) BY-SA © ChriKo ?

Family: Tytonidae

Tyto alba (Scopoli, 1769) .

- yĩ-tě: nì:y"i-m\ nì:y"i . "barn owl". Lit. "childrens' bird".



(CC) BY-SA ©



Public Domain by Racheeo ??



(CC) BY-SA ©

Order: Struthioniformes

Family: Struthionidae

[Struthio camelus](#) Linnaeus, 1758 .

- **sá-gõ:-m** \ **sá-gõ:** . "ostrich".



Public Domain by Taa DoBeS team
(Boden/Güldemann/Naumann)



Public Domain by Taa DoBeS team
(Boden/Güldemann/Naumann)



Public Domain by Roland Kiessling

Order: Upupiformes

Family: Upupidae

[Upupa epops](#) Linnaeus, 1758 .

- **[gòró bà:] sógó-m** \ **sógó** . "hoopoe". Lit. "nape at peck".



(CC) BY-SA ©



(CC) BY-SA ©



(CC) BY © Biodiversity Heritage Library

Class: Mammalia

Order: Artiodactyla

Family: Bovidae

[Damaliscus korrigum](#) (Ogilby, 1837) .

- **ጸንገጅ-ጠ** \\ **ጸንገጅ** . "korrigum (antelope close to topi), 100 kg (horselike, glossy; long horns curving backward then forward, black patch on upper legs, ochre-colored lower legs)".



(CC) BY ©



(CC) MARK © Philip Sclater



(CC) BY ©

[Gazella dama](#) (Pallas, 1766) .

- **ጸገጅ-ጠ** . "dama gazelle, 1 m shoulder height, 40-75 kg (face and belly white, red-brown top, short curled horns)". Lit. "outback-goat".



PD ©



PD ©



(CC) MARK © Philip Sclater

Sylvicapra grimmia (Linnaeus, 1758) . Characteristics: herbivore; height: 50cm; the coat varies in colour from light grey-brown to red-brown; the belly and the insides of the legs are white; the front legs have vertical black stripes; there is a tuft of long, black hair on the forehead; the short tail is dark on top and white underneath; females are larger and lack horns;. Biotope: savanna, grassland, woodland, mountains. ([Cillié 1997](#): 64)

- **lósù-m\lósù** . "bush duiker, 45-70 cm shoulder height, 15-20 kg (goatlike, males with short vertical horns o 18 cm, can leap)".



Public Domain by unknown (Chuckupd)



(CC) BY-NC-SA © Bernard DUPONT



(CC) BY © Biodiversity Heritage Library

Syncerus caffer (Sparrman, 1779) . Characteristics: herbivore; height: 1-1,7m; this cattle-like animal is born with a light reddish-brown coat that darkens with age until it is grey-black; both sexes are horned, but the horns of the male are especially large with thick bosses;. Biotope: savanna, scrubforest, forest, grassland. ([Cillié 1997](#): 84)

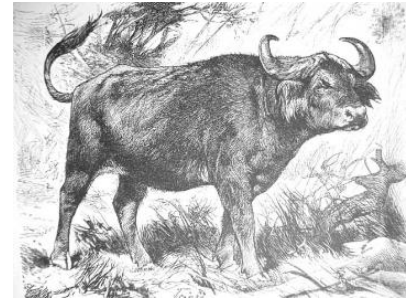
- **òr"ò: nă:-m\ nă:** . "African buffalo". Lit. "outback-cow".



(CC) BY-SA © unknown, Haplochromis?



(CC) BY © Stig Nygaard



(CC) MARK © Wikimedia Commons

Family: Giraffidae

[Giraffa camelopardalis](#) (Linnaeus, 1758) . Characteristics: herbivore; characteristic are the long legs and the very long neck; the whitish-yellow body is covered with brown patches that get darker as the animal ages; on top of the head are two short horns that are covered with black hair; they have a mane of short, stiff hair;. Biotope: savanna, scrubforest, grassland, woodland. ([Cillié 1997](#): 96)

- **yámjá-m\yámjá** . "giraffe".



Public Domain by Taa DoBeS team
(Boden/Güldemann/Naumann)



Public Domain by Taa DoBeS team
(Boden/Güldemann/Naumann)



Public Domain by Taa DoBeS team
(Boden/Güldemann/Naumann)

Family: Hippopotamidae

[Hippopotamus amphibius](#) Linnaeus, 1758 . Characteristics: herbivore; height: 150-165 cm; this very large semiaquatic animal is generally grey-brown but the belly and skinfolds are yellowish-pink; it has a very large mouth; the nostrils and the eyes are on top of the head; the ears are small and rounded;. Biotope: freshwater, swamps. ([Cillié 1997](#): 106)

- **bă:ⁿ-m\bă:ⁿ** . "hippo".



Public Domain by Christfried Naumann



© Geoff Gallice

Family: Suidae

[Phacochoerus africanus](#) (Gmelin, 1788) . Characteristics: omnivore; the body is grey and sparsely covered with long bristles; there is a mane of dark hair with lighter tips; the adults have large tusks which curve over the broad snout; the males have larger tusks than the females and have three pairs of warts on the sides of the face; they run with their tail up;. Biotope: savanna, grassland, desert. ([Cillié 1997](#): 92)

- **tóru-m\tóru** . "warthog (boar)".



© Geoff Gallice



(CC) BY-SA © Delphine Bruyere



(CC) PUBLICDOMAIN © Trisha M Shears

Order: Carnivora

Family: Canidae

[Canis adustus adustus](#) Sundevall, 1847 .

- **ðrⁿð:-ĩnjě-m\ĩnjé** . "side-striped jackal". Lit. "outback-dog".

[Vulpes pallida](#) (Cretzschmar, 1826) .

- **yǔ:rù-m\yǔ:rù** . "sand fox, pale fox".



Public Domain by

Family: Felidae

Caracal caracal (Schreber, 1776) . Characteristics: carnivore; the coat is reddish-brown to brick-red, the belly and chest are white; this cat has remarkably strong hind legs and a short tail; the ears are large and pointed with large tufts of black hair, the back of the ear is black; they have black marks around the eyes and at the base of the whiskers;. Biotope: savanna, scrubforest, grassland, rocky area. (Cillié 1997: 116)

- **nĩ-nĩwⁿě bārⁿà-m\ \bārⁿà** . "caracal, 13 kg (solitary)". Lit. "cat red".



(CC) BY-SA © € Van 3000 [2] from belgium belgiske
belgiuistan - United Tribes ov Europe



(CC) BY-NC-SA © David Bygott

Felis catus Linnaeus, 1758 .

- **nĩ-nĩwⁿě-m\ \nĩ-nĩwⁿé** . "cat (domestic)".
- **nĩ-nĩwⁿě jéwⁿè-m** . "dark cat (domestic)". Lit. "cat black".



(CC) BY-SA ©



(CC) BY-SA ©



(CC) BY-SA ©

[Felis margarita](#) Loche, 1858 .

- **ñī-ñīw^ᵐᵉ pīlé-m\pīlé** . "sand cat, 2-3 kg (sandy yellow, ears widely spaced)". Lit. "cat white".



(CC) BY-SA ©



(CC) BY ©



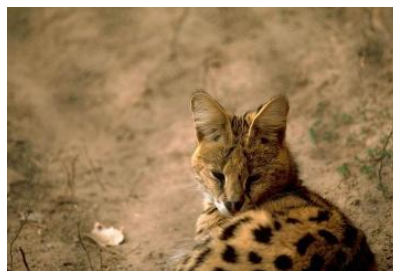
(CC) BY-SA ©

[Leptailurus serval](#) (Schreber, 1776) . Characteristics: carnivore; height 55-65cm; the Serval is a slender cat with long legs, a small head and large rounded ears; the colour ranges from dull white to golden-yellow with black stripes down the neck and black spots on the body; it can be distinguished from the Cheetah by the lack of tear marks and the larger ears;. Biotope: savanna, forest, grassland. ([Cillié 1997](#): 118)

- **ñī-ñīw^ᵐᵉ sàgòrṛ-m\sàgòrṛ** . "serval cat, 12 kg (spotted; long legs, pointed ears)". Lit. "cat multicolored".



(CC) BY-SA © unknown



(CC) PUBLICDOMAIN © Stolz, Gary M.

Panthera leo (Linnaeus, 1758) . Characteristics: carnivore; height: 110-120 cm; the Lion is the largest cat in Africa and the only one where the males have manes, the colour of the mane ranges from blonde to black; the back of the round ears is black; the males are much larger than the females and have manes;. Biotope: savanna, scrubforest, forest, grassland, mountains. (Cillié 1997: 110)

- **tà-dùṅgú-m\ \-dùṅgú** . "lion".



(CC) BY ©



© Geoff Gallice



Public Domain by Taa DoBeS team

(Boden/Güldemann/Naumann)

Panthera pardus (Linnaeus, 1758) .

- **tà-ṅṅṅṅ-m\ \ṅṅṅṅ** . "leopard".



(CC) BY-SA © Haplochromis



(CC) BY-SA ©



(CC) BY-SA © user at project|JanErkamp|wikipedia|en

Family: Herpestidae

Atilax paludinosus (G.[Baron] Cuvier, 1829) . Characteristics: carnivore; body-length: 45-60cm; the fur of this large mongoose ranges from black to rust-brown; the underside and the cheeks are lighter; the head is broad and the ears lie flat;. Biotope: savanna, scrubforest, rainforest, grassland, freshwater. (Cillié 1997: 158)

- **sě:-m\ \sě:** . "marsh mongoose (dark, to 4 kg, swims along river banks))".



(CC) BY-NC-SA © David Bygott



(CC) BY © Jeff Heath and the Dogon and Bangime Languages Project

Galerella sanguinea (Rüppell, 1835) . Characteristics: omnivore; the colour of this Mongoose is usually correlated with the soil colour for camouflage and ranges from yellowish-grey to reddish; the long and upwards bent tail has a black tip;. (Cillié 1997: 152)

- **sàrⁿà-gàlàrà-m**\\-gàlàrà . "slender mongoose (small, tip of tail black or red, less than 1 kg)".



(CC) BY-SA © Sara&Joachim



Public Domain by Andrew Smith (1797-1872)



(CC) BY © Jeff Heath and the Dogon and Bangime Languages Project

Herpestes ichneumon (Linnaeus, 1758) . Characteristics: carnivore; body-length: 50-60 cm; they have a long, low-slung form; the grey coat is dotted with brownish speckles; the tail ends with a black tassel;. Biotope: marshland, swamps. (Cillié 1997: 166)

- **sě:-m**\\sě: . "Egyptian mongoose, ichneumon (large, to 4 kg)".



(CC) BY-SA © □□□□□□

Ichneumia albicauda (G.[Baron] Cuvier, 1829) . Characteristics: omnivore; body-length 60cm; the coat is grey-brown; the hind legs are very long causing the back to slant forward when it walks; the tail is covered in long white hair;. Biotope: savanna, forest, grassland, woodland. ([Cillié 1997](#): 156)

- sè: ʒ:lò-m . "white-tailed mongoose (to 4 kg)".



(CC) BY-SA © MCSchaeffer



(CC) MARK © Frank E. Beppard



(CC) BY © Jeff Heath and the Dogon and Bangime Languages Project

Family: Hyaenidae

Crocuta crocuta (Erxleben, 1777) . Characteristics: carnivore; height: 70-90 cm; the colour ranges from dull yellow to white, with irregular dark spots;it has a short mane and overall short hair; the animal has a large head with round ears, e strong neck and a sloping back;. Biotope: savanna,scrubforest, montane forest, grassland. ([Cillié 1997](#): 124)

- tĩ-tà: kòḡóʀ"ḡ-kôy" . "spotted hyena".



(CC) BY-SA © Gastrocycle



(CC) BY © Marieke Kuijpers



(CC) BY-SA © Jerry Friedman

Hyaena hyaena (Linnaeus, 1758) .

- tĩ-tà: pílè-m\\pílé . "striped hyena". Lit. "hyena white".



(CC) BY-NC-SA © David Bygott



(CC) BY © Simon J. Tonge



(CC) MARK © Beddard, Frank E. (Frank Evers), 1858-1925

Family: Mustelidae

Ictonyx striatus (Perry, 1810) . Characteristics: carnivore; height 10-15cm; this short legged predator has black fur with 4 parallel, white stripes on the back; it has white marks underneath the ears and between the eyes;. Biotope: savanna, forest, grassland, woodland, semi-desert, swamps, mountains. (Cillié 1997: 148)

- ḁ: túwⁿḁ-m\ túwⁿḁ . "zorilla (polecat)". Lit. "chief-measure".



(CC) BY © Jeff Heath and the Dogon and Bangime Languages Project



CC-Zero ©



(CC) BY-NC-SA © Antonius El Kommos

Mellivora capensis (Schreber, 1776) . Characteristics: omnivore; height: 25-30cm; the body is black with a broad, greyish-white saddle on the back and head;the legs are short and equipped with sharp claws; the black tail is short; the ears are very small;. Biotope: savanna, forest, grassland. (Cillié 1997: 140)

- dēwⁿrⁿḁ-m\ dēwⁿrⁿḁ . "ratel (honey badger)".



(CC) BY-SA ©



(CC) BY-SA © Matěj Batha



(CC) MARK © Creator:Joseph Smit

Family: Viverridae

Genetta genetta (Linnaeus, 1758) . Characteristics: carnivore; this cat-like animal has a grey coat with black spots on it; the tail is very long and has grey and black rings, the tip is always white; the ears are very thin and rounded; each individual has a characteristic face mask;. Biotope: savanna, forest, scrubforest, grassland. ([Cillié 1997](#): 144)

- kòlòrǒ-m\\kòlòró . "genet".



(CC) BY © Jeff Heath and the Dogon and Bangime Languages Project



(CC) BY © Jeff Heath and the Dogon and Bangime Languages Project



(CC) BY-SA © Liné1

Order: Chiroptera

Family: Emballonuridae

Taphozous mauritanus E. Geoffroy, 1818 . Characteristics: insectivore; body-length: 10-11cm, wing-span: 18-20cm; the dorsal pelage is grizzles grey, the ventral fur is characteristically white; the ears are large and triangular;. Biotope: savanna, forest, grassland, swamps. ([Cillié 1997](#): 208)

- gǐ-gǐšǐ yá-yǒ:rù-m\\-yǒ:rù . "tomb bat".



(CC) BY © Frank Vassen



(CC) BY-SA © Mimi Neumann



(CC) BY-NC © inaturalist

Family: Pteropodidae

[*Rousettus aegyptiacus*](#) (E. Geoffroy, 1810) . Characteristics: herbivore; body-length: 15cm, wing-span: 60cm; dark brown fur; pointy ears;. Biotope: savanna, forest, grassland. ([Cillié 1997](#): 207)

- **gĩ-gĩšĩ wá:sú-m\\wá:sú** . "blackish fruit bat sp."



(CC) BY-SA © Artemy Voikhansky



(CC) BY-SA ©

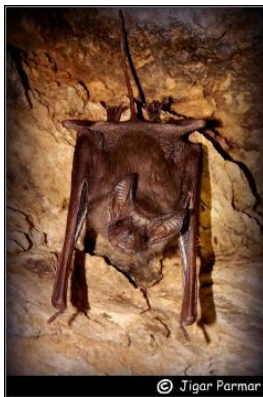


(CC) BY-NC-SA © Description de l'Égypte, Book 34 (1826), Volume I - Planches : Histoire Naturelle.

Family: Rhinopomatidae

[*Rhinopoma microphyllum*](#) (Brünnich, 1782) .

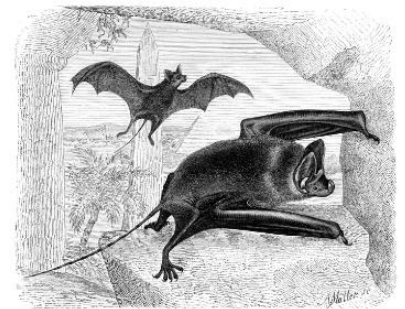
- **gĩ-gĩšĩ yá-yõ:rù-m\\-yõ:rù** . "mouse-tailed bat (insectivorous, crepuscular)".



(CC) BY-SA ©



(CC) BY © Jeff Heath and the Dogon and Bangime Languages Project



Public Domain by

Order: Erinaceomorpha

Family: Erinaceidae

[*Atelerix albiventris*](#) (Wagner, 1841) .

- **úrú-bisírĩ-m\\-bisírĩ** . "hedgehog".

Family: Elephantidae

[*Loxodonta africana*](#) (Blumenbach, 1797) . Characteristics: herbivore; height: 3-3,75m; the African Bush elephant has large flat ears; its trunk ends with two opposing extensions; both sexes have large tusks; females are smaller and have smaller tusks;. Biotope: savanna, marshland, forest, grassland, desert, swamps. ([Cillié 1997](#): 100)

- gǔ:-m\\gǔ: . "elephant".



(CC) BY-SA © nickandmel2006



Public Domain by Gorgo

Order: Rodentia

Family: Hystricidae

[*Hystrix cristata*](#) Linnaeus, 1758 .

- cěwⁿrⁿě-m\\cěwⁿrⁿě . "porcupine".



(CC) BY-SA ©



(CC) MARK © creator:Thomas Hardwicke



(CC) BY-NC-SA © David Bygott

Family: Muridae

[*Acomys johannis*](#) .

- ò: dòró-sô-m\\-s-ê:ⁿ . "spiny-haired mouse sp.". Lit. "mouse spine-having".



(CC) BY © Jeff Heath and the Dogon and Bangime Languages Project



(CC) BY © Jeff Heath and the Dogon and Bangime Languages Project

[Arvicanthis niloticus](#) (Desmarest, 1822) .

- **bàrà-ô-m\-\-ô:** . "unstriped grass rat (diurnal)". Lit. "Bara.lowland-mouse".



(CC) BY © Jeff Heath and the Dogon and Bangime Languages Project



(CC) BY © Jeff Heath and the Dogon and Bangime Languages Project



(CC) BY © Jeff Heath and the Dogon and Bangime Languages Project

[Cricetomys gambianus](#) Waterhouse, 1840 . Characteristics: omnivore; total length: 80 cm, tail-length: 40 cm; grey-brown fur on the back, belly lighter; long naked tail which is white towards the end; dark eye-ring; long thin ears;. Biotope: savanna, forest, grassland. ([Stuart and Stuart 2007](#): 108)

- **gù-gùsú-m\gù-gùsú** . "giant pouched rat (about 2 kilos)".



(CC) BY-SA ©



(CC) BY-SA ©



(CC) BY © Jeff Heath and the Dogon and Bangime Languages Project

[Gerbillus](#) Todaro, 1995 .

- **barà ò pìlé-m\pìlé** . "gerbil". Lit. "Bara.lowland-mouse-white".



(CC) MARK © Wikimedia Commons



(CC) MARK © Joseph Smit



(CC) BY © Shah Jahan

[Mastomys natalensis](#) (Smith, 1834) . Characteristics: herbivore; length: 24cm, tail-length: 11cm; underparts paler than upperparts, females have up to 12 pairs of nipples. Biotope: savanna, forest, shrubland, human settlement. ([Stuart and Stuart 2007](#): 126)

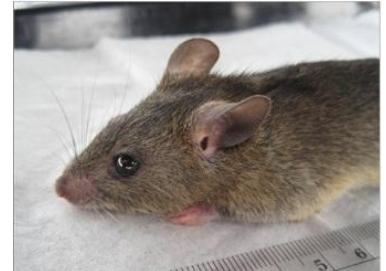
- **ò jéw"è-m\jéw"è** . "black form of African soft-furred rat (house mouse)". Lit. "mouse black".



(CC) BY © Jeff Heath and the Dogon and Bangime Languages Project



(CC) BY ©



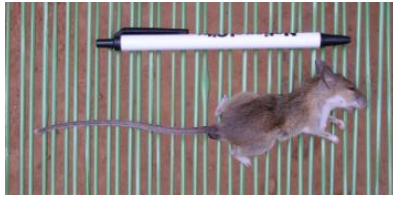
(CC) BY ©

[Myomys daltoni](#) (Thomas, 1892) .

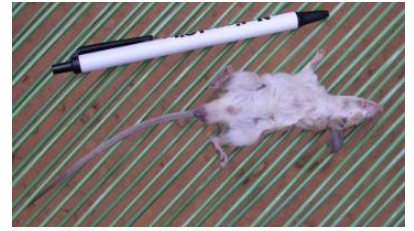
- **ò pìlé-m\pìlé** . "Dalton's mouse (small, light-colored, belly white, tail longer than body, in field or houses, can climb)".
- **òr"ò: ò pìlé-m\pìlé** . "Dalton's mouse (small, light-colored, belly white, tail longer than body, in field or houses, can climb)". Lit. "outback-mouse-white".



(CC) BY © Zbyszek Boratynski



(CC) BY © Jeff Heath and the Dogon and Bangime Languages Project



(CC) BY © Jeff Heath and the Dogon and Bangime Languages Project

Family: Sciuridae

[*Heliosciurus gambianus*](#) (Ogilby, 1835) .

- **sà-síy^ᵐᵔ-m\ \-síy^ᵐᵔ** . "Gambian sun squirrel (arboreal)".



(CC) BY © N3ddo!



(CC) BY © N3ddo!

Order: Soricomorpha

Family: Soricidae

[*Crocidura cinderella*](#) Thomas, 1911 .

- **ᵔ-sí:li-m\ \ó-sí:li** . "tiny white-toothed shrew sp.". Lit. "mouse-undersized".



(CC) BY © Jeff Heath and the Dogon and Bangime Languages Project

Order: Tubulidentata

Family: Orycteropodidae

[*Orycteropus afer*](#) (Pallas, 1766) . Characteristics: insectivore; height: 60 cm; this animal has a long pig-like snout, large, erect ears and a thick tail; most of the body is naked, only the legs are covered with dark hair; the forefeet have strong claws for digging; it has a long (30 cm), sticky tongue which allows it to catch termites and ants;. Biotope: savanna, grassland. ([Cillié 1997](#): 172)

- àwⁿǎ-m\àwⁿá . "aardvark, 50 kg".



Public Domain by Christfried Naumann



(CC) BY-SA ©



(CC) BY-SA ©

Class: Reptilia

Order: Crocodylia

Family: Crocodylidae

[*Crocodylus niloticus*](#) Laurenti, 1768 .

- árⁿiyⁿá-m\árⁿiyⁿá . "Nile crocodile".



(CC) BY-SA © MathKnight and Zach Evenor



(CC) BY-SA © Marco Schmidt



(CC) BY-SA © Atamari

Order: Squamata

Family: Agamidae

[Agama sankaranica](#) Chabanaud, 1918 .

- sé:nè cèngù-m\\cèngù . "ground-dwelling agama lizard sp.". Lit. "sandy.plain's agama".



(CC) BY © Jeff Heath and the Dogon and Bangime Languages Project



(CC) BY © Jeff Heath and the Dogon and Bangime Languages Project



(CC) BY © Jeff Heath and the Dogon and Bangime Languages Project

[Uromastix geyri](#) Müller, 1922 .

- ùlǔ-m\\ùlú . "spiny-tailed lizard sp.".



(CC) BY-SA ©



(CC) BY-SA ©



(CC) BY © Jeff Heath and the Dogon and Bangime Languages Project

Family: Atractaspididae

[Atractaspis watsoni](#) Boulenger, 1908 .

- cé-rè-wǎ-m\\cé-rè-wǎ: . "mole viper". Lit. "bite-curse".



(CC) BY © Jeff Heath and the Dogon and Bangime Languages Project



(CC) BY © Jeff Heath and the Dogon and Bangime Languages Project



(CC) BY © Jeff Heath and the Dogon and Bangime Languages Project

Family: Boidae

[Gongylophis muelleri](#) Angel, 1938 .

- sé:nè kǐ-kòsù-m . "sand boa, thick-bodied venomous snake sp." . Lit. "sandy.plain's viper".



(CC) BY © Jeff Heath and the Dogon and Bangime
Languages Project



(CC) BY © Jeff Heath and the Dogon and Bangime
Languages Project



(CC) BY © Jeff Heath and the Dogon and Bangime
Languages Project

[Python sebae](#) (Gmelin, 1789) .

- sèsù-mǐrⁿú-m\\-mǐrⁿú . "rock python". Lit. "grandmother-swallow".



(CC) BY-SA © Joachim Huber



(CC) BY © Tigerpython



(CC) MARK © Sir Andrew Smith

Family: Chamaeleonidae

[Chamaeleo africanus](#) Laurenti, 1768 .

- š: jí:là-m\\jí:là . "chameleon". Lit. "chief's ...".



(CC) BY © Jeff Heath and the Dogon and Bangime
Languages Project



(CC) BY © Jeff Heath and the Dogon and Bangime
Languages Project



(CC) BY © Jeff Heath and the Dogon and Bangime
Languages Project

Family: Colubridae

[Psammophis elegans](#) (Shaw, 1802) .

- ànjă-m\ànjá . "arboreal colubrid snake sp."



(CC) BY © Jeff Heath and the Dogon and Bangime
Languages Project



(CC) BY © Jeff Heath and the Dogon and Bangime
Languages Project



(CC) BY © Jeff Heath and the Dogon and Bangime
Languages Project

[Psammophis sibilans](#) (Linnaeus, 1758) .

- ólóró-m\ólóró . "terrestrial colubrid snake sp."



(CC) BY © Jeff Heath and the Dogon and Bangime
Languages Project



(CC) BY © Jeff Heath and the Dogon and Bangime
Languages Project



(CC) BY-SA ©

Family: Elapidae

Naja haje (Linnaeus, 1758) .

- òlòrò sí:ngà-m\\sí:ngà . "Egyptian cobra". Lit. "... multicolored".



Public Domain by John Walker, Head



(CC) BY © Jeff Heath and the Dogon and Bangime Languages Project



Public Domain by Ltshears

Naja nigricollis Reinhardt, 1843 .

- àwà jèwⁿé-m\\jèwⁿé . "spitting cobra". Lit. "snake black".
- àwà jèwⁿé sí:ngà-m\\sí:ngà . "spitting cobra (form with red bands under neck)". Lit. "snake black ...".



(CC) BY © Luca Boldrini



(CC) BY © Jeff Heath and the Dogon and Bangime Languages Project

Family: Gekkonidae

Ptyodactylus ragazzii Anderson, 1898 .

- árkèlè-m\\árkèlè: . "fan-footed house gecko".



(CC) BY © Jeff Heath and the Dogon and Bangime Languages Project



(CC) BY © Jeff Heath and the Dogon and Bangime Languages Project

Tarentola ephippiata O'shaughnessy, 1875 .

- árkèlè-dě:-m\\-dě: . "arboreal gecko sp.". Lit. "gecko-...".



(CC) BY-NC-SA © Thomas Brown



(CC) BY-NC-SA © Thomas Brown



(CC) BY © Jeff Heath and the Dogon and Bangime
Languages Project

Family: Scincidae

[Chalcides ocellatus](#) (Forskål, 1775) .

- à-bù:lǒ-m\à-bù:ló . "spotted skink sp. (thick body, very short legs)". Lit. "chew.cud".



(CC) BY © Jeff Heath and the Dogon and Bangime
Languages Project

[Sphenops delislei](#) (Lataste & Rochebrune, 1876) .

- bñi-pǐgiri-m\pǐgiri . "subterranean skink sp. (short legs, loose sand near bushes)". Lit. "anus-twist".

[Trachylepis perrotetii](#) (Duméril & Bibron, 1839) .

- à-bù:lǒ-m\à-bù:ló . "spotted skink sp. (relatively long legs)". Lit. "chew.cud".



(CC) BY © liesvanrompaey



(CC) BY © Lies Van Rompae



(CC) BY © Jeff Heath and the Dogon and Bangime Languages Project

[Trachylepis quinquetaeniata](#) (Lichtenstein, 1823) .

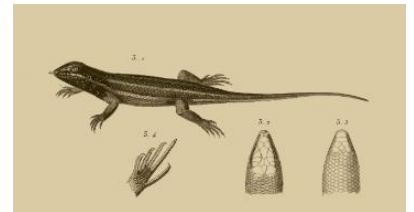
- à-sèmbě-m\à-sèmbé . "five-lined skink".



(CC) BY-NC-SA © cultnat



(CC) BY © Jeff Heath and the Dogon and Bangime Languages Project



(CC) BY-NC-SA © Description de l'Egypte, Book 34 (1826), Volume I - Planches : Histoire Naturelle.

Family: Varanidae

[Varanus griseus](#) (Daudin, 1803) .

- à:n-m\à:n . "grey monitor lizard (very long tail, terrestrial)".



(CC) PUBLICDOMAIN © Omid Mozaffari



(CC) BY-NC-SA © cultnat



(CC) BY-NC-SA © Description de l'Egypte, Book 34 (1826), Volume I - Planches : Histoire Naturelle.

Varanus niloticus (Linnaeus, 1766) .

- **ǎ:n-m\ǎ:n** . "Nile monitor lizard (climbs trees near water)".



(CC) BY © Simon J. Tonge



Public Domain by Alexis Naumann



(CC) BY-NC-SA © Description de l'Égypte, Book 34 (1826), Volume I - Planches : Histoire Naturelle.

Family: Viperidae

Bitis arietans (Merrem, 1820) .

- **kúsúru-m\kúsúru** . "puff adder".



(CC) BY-NC-SA © Gerald and Buff Corsi



Public Domain by Alexis Naumann



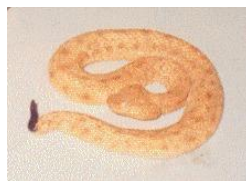
Public Domain by Alexis Naumann

Cerastes vipera (Linnaeus, 1758) .

- **[sùmòy bár"à-w"] kù-kòsù-m\kù-kòsù** . "sand viper". Lit. "[ground red]'s viper".



(CC) BY-SA © LA Dawson



(CC) BY © Jeff Heath and the Dogon and Bangime Languages Project

Echis leucogaster Roman, 1972 .

- **kù-kòsù ár"à-m\ár"à** . "viper sp.". Lit. "viper male".
- **tórè kù-kòsù-m\kù-kòsù** . "viper sp.". Lit. "mountain's viper".



(CC) BY © Jeff Heath and the Dogon and Bangime Languages Project



(CC) BY © Jeff Heath and the Dogon and Bangime Languages Project



(CC) BY © Jeff Heath and the Dogon and Bangime Languages Project

[Echis ocellatus](#) Stemmler, 1970 .

- **kù-kòsù yǎ-m\yǎ:** . "viper sp.". Lit. "viper female".
- **sé:nè kù-kòsù-m\kù-kòsù** . "viper sp.". Lit. "sandy.plain's viper".



(CC) BY © Jeff Heath and the Dogon and Bangime Languages Project



(CC) BY © Jeff Heath and the Dogon and Bangime Languages Project



(CC) BY © Jeff Heath and the Dogon and Bangime Languages Project

Order: Testudines

Family: Pelomedusidae

[Pelomedusa subrufa](#) (Bonnaterre, 1789) .

- **gĩ:ⁿ tǎ:sù-m\gĩ:ⁿ tǎ:sù** . "small aquatic tortoise (rainy season)". Lit. "farts much".



(CC) BY-SA © Ltshears



(CC) BY © Jeff Heath and the Dogon and Bangime Languages Project



(CC) BY © Jeff Heath and the Dogon and Bangime Languages Project

Family: Testudinidae

[Geochelone sulcata](#) (Miller, 1779) .

- á-kùṅgùrǒ-m\á-kùṅgùrǒ . "giant tortoise (terrestrial)".



(CC) BY © Jeff Heath and the Dogon and Bangime Languages Project



(CC) BY © Jeff Heath and the Dogon and Bangime Languages Project



(CC) BY © Jeff Heath and the Dogon and Bangime Languages Project

Kingdom: Fungi

Phylum: Basidiomycota

Class: Agaricomycetes

Order: Agaricales

Family: Agaricaceae

[Podaxis pistillaris](#) (L.) Fr. 1829 .

- púlǒ-m dǒrǒ kùrⁿùm . "puffball". Lit. "Fulbe's penis macari".



(CC) BY © Jeff Heath and the Dogon and Bangime Languages Project



(CC) BY © Jeff Heath and the Dogon and Bangime Languages Project



(CC) BY-NC-SA © Douglas Smith

Kingdom: Metazoa

Phylum: Arthropoda

Class: Arachnida

Order: Scorpiones

Family: Buthidae

[Androctonus amoreuxi](#) .

- mù-mùrⁿû-m\mù-mùrⁿû: . "fat-tailed scorpion".
- mù-mùrⁿû sákèlê-m\sákèlê: . "baby fat-tailed scorpion".



(CC) BY © Jeff Heath and the Dogon and Bangime Languages Project



(CC) BY © Jeff Heath and the Dogon and Bangime Languages Project



(CC) BY © Jeff Heath and the Dogon and Bangime Languages Project

Family: Scorpionidae

[Pandinus imperator](#) .

- sǒ-m mú-mùrⁿû-m\mú-mùrⁿû . "black emperor scorpion". Lit. "horse's scorpion".

Class: Insecta

Order: Hemiptera

Family: Tessaratomidae

[Tessaratoma](#) (A. Agassiz, 1879) .

- àsàgùsô: cǐ-cè:-m\\cǐ-cè: . "flat green bug larva sp. in Combretum glutinosum tree". Lit. "Combretum's beetle".

Order: Lepidoptera

Family: Noctuidae

[Heliocheilus albipunctella](#) .

- sǐ-sǐ: bórù-m\\bórù . "millet head-miner (caterpillar in millet grain spike)".

Phylum: Chordata

Class: Reptilia

Order: Squamata

Family: Colubridae

[Bamanophis dorri](#) (Lataste, 1888) .

- tàbàtérù-m\\tàbàtérù . "colubrid snake sp.".



(CC) BY © Jeff Heath and the Dogon and Bangime
Languages Project



(CC) BY © Jeff Heath and the Dogon and Bangime
Languages Project



(CC) BY © Jeff Heath and the Dogon and Bangime
Languages Project

Kingdom: Plantae

Phylum: Magnoliophyta

Class: Liliopsida

Order: Commelinales

Family: Commelinaceae

[Commelina forskalaei](#) .

- pùtùm-pù: yă: . "herb sp."



(CC) BY © Jeff Heath and the Dogon and Bangime
Languages Project



(CC) BY © Jeff Heath and the Dogon and Bangime
Languages Project



(CC) BY © Jeff Heath and the Dogon and Bangime
Languages Project

Order: Poales

Family: Cyperaceae

[Abildgaardia wallichiana](#) Lye .

- nī: sàwà: . "sedge sp.". Lit. "water's grass".



(CC) BY © Jeff Heath and the Dogon and Bangime
Languages Project



(CC) BY © Jeff Heath and the Dogon and Bangime
Languages Project

Family: Poaceae

[Digitaria ciliaris var. ciliaris](#) .

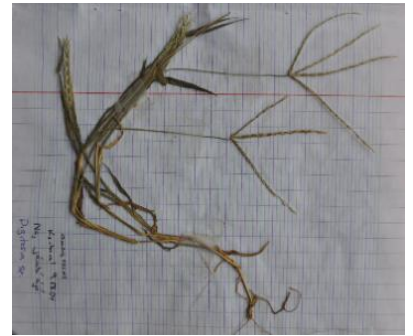
- jàmsěy . "grass sp."



(CC) BY © Jeff Heath and the Dogon and Bangime Languages Project



(CC) BY © Jeff Heath and the Dogon and Bangime Languages Project



(CC) BY © Jeff Heath and the Dogon and Bangime Languages Project

Class: Magnoliopsida

Order: Brassicales

Family: Capparaceae

[Crataeva adansonii subsp. odora](#) .

- àrⁿá-wěy . "tree sp."
- ò:r^mò-kàmâyn . "tree sp. (fruit)". Lit. "monkey-melon".



(CC) BY © Jeff Heath and the Dogon and Bangime Languages Project



(CC) BY © Jeff Heath and the Dogon and Bangime Languages Project



(CC) BY © Jeff Heath and the Dogon and Bangime Languages Project

Order: Caryophyllales

Family: Molluginaceae

[Limeum pterocarpum var. pterocarpum](#) .

- sé:nè sàwà: . "herb sp."



(CC) BY © Jeff Heath and the Dogon and Bangime
Languages Project



(CC) BY © Jeff Heath and the Dogon and Bangime
Languages Project



(CC) BY © Jeff Heath and the Dogon and Bangime
Languages Project

Order: Cucurbitales

Family: Cucurbitaceae

[Cucumis melo subsp. agrestis var. agrestis Naudin](#)

- cèŋ-kànárn"àyⁿ ~ cèŋgù-kànárn"àyⁿ . "wild melon sp."
- èkùnjù kànárn"àyⁿ . "wild melon sp."



(CC) BY © Jeff Heath and the Dogon and Bangime
Languages Project



(CC) BY © Jeff Heath and the Dogon and Bangime
Languages Project



(CC) BY © Jeff Heath and the Dogon and Bangime
Languages Project

Order: Fabales

Family: Fabaceae

[Indigofera hirsuta var hirsuta](#)

- [nĩ-nĩ:] -jéŋér"é . "herb sp.". Lit. "sun-necklace".



(CC) BY © Jeff Heath and the Dogon and Bangime Languages Project



(CC) BY © Jeff Heath and the Dogon and Bangime Languages Project



(CC) BY © Jeff Heath and the Dogon and Bangime Languages Project

Order: Garryales

Family: Garryaceae

[Grewia flavescens var flavescens](#) .

- ḡsòy- [kòró-kàrá] . "shrub sp."



(CC) BY © Jeff Heath and the Dogon and Bangime Languages Project



(CC) BY © Jeff Heath and the Dogon and Bangime Languages Project



(CC) BY © Jeff Heath and the Dogon and Bangime Languages Project

Order: Gentianales

Family: Rubiaceae

[Spermacoce stachydea var stachydea](#) .

- sàwà: kù:-júṅgúlúm . "herb sp.". Lit. "grass head-knobbed".



(CC) BY © Jeff Heath and the Dogon and Bangime
Languages Project



(CC) BY © Jeff Heath and the Dogon and Bangime
Languages Project



(CC) BY © Jeff Heath and the Dogon and Bangime
Languages Project

Order: Lamiales

Family: Acanthaceae

[Blepharis linariifolia](#) .

- ṅăm sómdò . "medicinal herb sp."



(CC) BY © Jeff Heath and the Dogon and Bangime
Languages Project



(CC) BY © Jeff Heath and the Dogon and Bangime
Languages Project



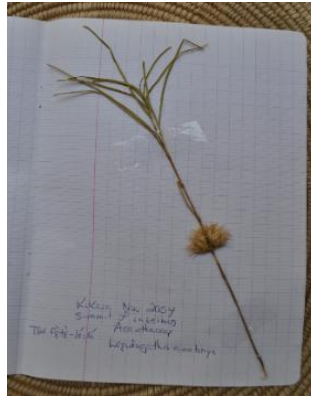
(CC) BY © Jeff Heath and the Dogon and Bangime
Languages Project

[Lepidagathis anobrya](#) Nees .

- sàriyây sáwà: . "herb sp."



(CC) BY-NC-SA © Research Institute Senckenberg



(CC) BY © Jeff Heath and the Dogon and Bangime

Languages Project



(CC) BY © Jeff Heath and the Dogon and Bangime

Languages Project

Family: Lamiaceae

[Endostemon tereticaulis](#) (Poir.) M.R.Ashby .

- **jírè-figísì** . "herb sp.". Lit. "eye-rub".



(CC) BY © Jeff Heath and the Dogon and Bangime

Languages Project



(CC) BY-NC © Bart Wursten



(CC) BY-NC © Bart Wursten

[Vitex madiensis subsp. madiensis](#) Oliv. .

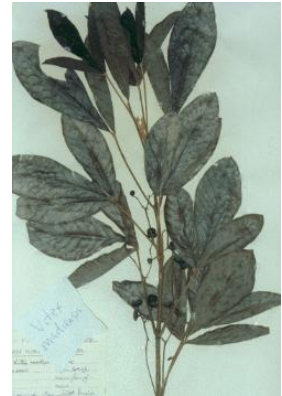
- **tórò àrmùr^ᵀ** . "tree sp.". Lit. "mountain's Vitex".



(CC) BY © Jeff Heath and the Dogon and Bangime Languages Project



(CC) BY © Jeff Heath and the Dogon and Bangime Languages Project



(CC) BY © Jeff Heath and the Dogon and Bangime Languages Project

Order: Laurales

Family: Hernandiaceae

[Gyrocarpus americanus subsp. pinnatilobus](#) .

- yămbö̃m . "tree sp."

Order: Malvales

Family: Malvaceae

[Bombax costatum](#) Pellegrin & Vuillet .

- jīm-tóŋr̄"ḡ . "tree sp."



(CC) BY © Jeff Heath and the Dogon and Bangime Languages Project



(CC) BY © Jeff Heath and the Dogon and Bangime Languages Project

[Cienfuegosia digitata](#) Cav. .

- [b̄̀r̄-b̄̀r̄è] -ḡ̀:ṛò . "prostrate herb sp.". Lit. "goatherd-kola.nut".



(CC) BY © Jeff Heath and the Dogon and Bangime
Languages Project



(CC) BY © Jeff Heath and the Dogon and Bangime
Languages Project



(CC) BY © Jeff Heath and the Dogon and Bangime
Languages Project

[Grewia tenax \(Forsk.\) Fiori](#) .

- ðsòy- [nà:- [tí-tôw]] . "shrub sp.". Lit. "Grewia-elbow".



(CC) BY © Jeff Heath and the Dogon and Bangime
Languages Project



(CC) BY © Jeff Heath and the Dogon and Bangime
Languages Project



(CC) BY © Jeff Heath and the Dogon and Bangime
Languages Project

Order: Myrtales

Family: Combretaceae

[Combretum aculeatum](#) Vent. .

- címjé . "shrub sp.".



(CC) BY © Jeff Heath and the Dogon and Bangime
Languages Project



(CC) BY © Jeff Heath and the Dogon and Bangime
Languages Project



(CC) BY © Jeff Heath and the Dogon and Bangime
Languages Project

[Terminalia macroptera](#) Guill. & Perr. .

- **kògô:** . "tree sp."



(CC) BY © Jeff Heath and the Dogon and Bangime
Languages Project



(CC) BY © Jeff Heath and the Dogon and Bangime
Languages Project



(CC) BY © Jeff Heath and the Dogon and Bangime
Languages Project

Order: Rosales

Family: Cannabaceae

[Celtis toka](#) (Forssk.) F.N. Hepper & J.R.I. Wood .

- **gà:ní:kò** . "tree sp."



(CC) BY © Jeff Heath and the Dogon and Bangime
Languages Project



(CC) BY © Jeff Heath and the Dogon and Bangime
Languages Project



(CC) BY-NC-SA © Marco Schmidt

Family: Moraceae

[Ficus cordata subsp. lecardii](#) C.C. Berg .

- **sér-mènjêm** . "fig tree sp."



(CC) BY © Jeff Heath and the Dogon and Bangime Languages Project



(CC) BY © Jeff Heath and the Dogon and Bangime Languages Project



(CC) BY © Jeff Heath and the Dogon and Bangime Languages Project

[Ficus ingens var. ingens](#) .

- [bǝ: sò-ló-m̀] kùmbĩ . "fig tree sp." . Lit. "[I don't have a father] Ficus".



(CC) BY © Jeff Heath and the Dogon and Bangime Languages Project



(CC) BY © Jeff Heath and the Dogon and Bangime Languages Project



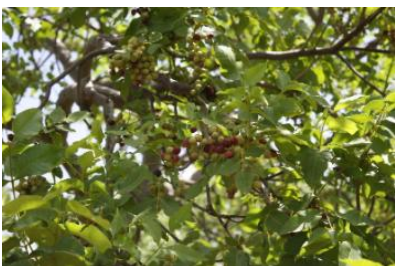
(CC) BY © Jeff Heath and the Dogon and Bangime Languages Project

Order: Sapindales

Family: Anacardiaceae

[Lannea microcarpa](#) Engl. & K. Krause .

- kùrô: . "wild grape ree".



(CC) BY-NC-SA © Research Institute Senckenberg



(CC) BY © Jeff Heath and the Dogon and Bangime Languages Project



(CC) BY © Jeff Heath and the Dogon and Bangime Languages Project

Order: Solanales

Family: Convolvulaceae

[Ipomoea coscinosperma](#) Hochst. ex Choisy .

- [ɛ̀lèy-wà:] -gùló . "trailing vine sp."



(CC) BY © Jeff Heath and the Dogon and Bangime
Languages Project



(CC) BY © Jeff Heath and the Dogon and Bangime
Languages Project



(CC) BY © Jeff Heath and the Dogon and Bangime
Languages Project

[Merremia pinnata](#) (Hochst. ex Choisy) Hall. fil. .

- sàwà: sémdé . "trailing vine sp."



(CC) BY © Jeff Heath and the Dogon and Bangime
Languages Project



(CC) BY © Jeff Heath and the Dogon and Bangime
Languages Project



(CC) BY-NC © Bart Wursten

Class: other

Order: Brassicales

Family: Cleomaceae

[Cleome sp.](#) .

- jámbĩ-sírĩ . "herb sp."

Phylum: Tracheophyta

Class: Liliopsida

Order: Alismatales

Family: Araceae

[Pistia stratiotes](#) L. .

- nĩ:-sĩrĩwé . "water lettuce".
- nĩ:-sĩrĩwè dũgũ: . "water lettuce".



(CC) BY © Forest & Kim Starr



(CC) BY © Forest & Kim Starr



(CC) BY-NC © Bart Wursten

[Stylochaeton lancifolius](#) .

- sùbòŋgò-sú:r"ù . "herb sp."



(CC) BY © Jeff Heath and the Dogon and Bangime
Languages Project



(CC) BY-NC-SA © Research Institute Senckenberg



(CC) BY-NC-SA © Research Institute Senckenberg

Order: Arecales

Family: Arecaceae



(CC) BY © Jeff Heath and the Dogon and Bangime
Languages Project



(CC) BY © Jeff Heath and the Dogon and Bangime
Languages Project



(CC) BY © Jeff Heath and the Dogon and Bangime
Languages Project

[Pancratium trianthum](#) Herb. .

- **jàsúm-jàsàrà** . "wild onion sp."



(CC) BY © Jeff Heath and the Dogon and Bangime
Languages Project



(CC) BY © Jeff Heath and the Dogon and Bangime
Languages Project



(CC) BY © Jeff Heath and the Dogon and Bangime
Languages Project

Family: Asparagaceae

[Sansevieria liberica](#) Gérôme & Labroy .

- **kàròy-ná:** . "agave sp."



(CC) BY-NC-SA © Research Institute Senckenberg



(CC) BY-NC-SA © Research Institute Senckenberg



(CC) BY © Jeff Heath and the Dogon and Bangime
Languages Project

Order: Commelinales

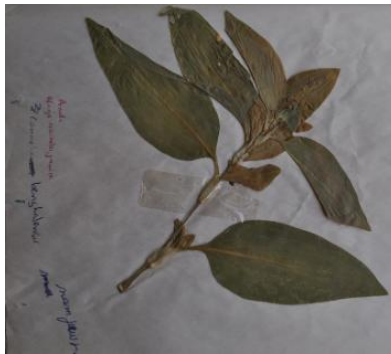
Family: Commelinaceae

[Commelina benghalensis benghalensis](#) .

- pùtùm-pù: ár"à . "herb sp."



(CC) BY © Jeff Heath and the Dogon and Bangime
Languages Project



(CC) BY © Jeff Heath and the Dogon and Bangime
Languages Project



(CC) BY © Jeff Heath and the Dogon and Bangime
Languages Project

[Commelina Livingstonii](#) (C.B.Clarke) J.K.Morton .

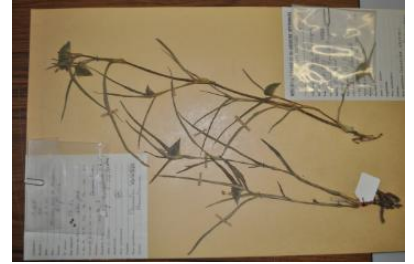
- pùtùm-pù: ár"à . "herb sp."



(CC) BY-NC-SA © Bernard DUPONT



(CC) BY-NC-SA © Bernard DUPONT



(CC) BY © Jeff Heath and the Dogon and Bangime Languages Project

Family: Pontederiaceae

[Heteranthera callifolia](#) Rchb. ex Kunth .

- kùrⁿù-gùló . "herb sp."



(CC) BY © Jeff Heath and the Dogon and Bangime Languages Project



(CC) BY © Jeff Heath and the Dogon and Bangime Languages Project



(CC) BY © Jeff Heath and the Dogon and Bangime Languages Project

Order: Poales

Family: Cyperaceae

[Cyperus rotundus](#) L. .

- gūyⁿ . "sedge sp."



(CC) BY © Jeff Heath and the Dogon and Bangime
Languages Project



(CC) BY © Jeff Heath and the Dogon and Bangime
Languages Project



(CC) BY © Jeff Heath and the Dogon and Bangime
Languages Project

[Pycnus macrostachyos](#) (Lam.) J.Raynal .

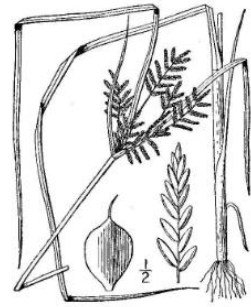
- **gǔy" nà:dúm** . "sedge sp."



(CC) BY © Jeff Heath and the Dogon and Bangime
Languages Project



(CC) BY © Jeff Heath and the Dogon and Bangime
Languages Project



(CC) MARK © USDA NRCS PLANTS Database

Family: Poaceae

[Andropogon gayanus](#) Kunth .

- **sàwà-sè: bār"à-w** . "tall grass sp."



(CC) BY © Jeff Heath and the Dogon and Bangime
Languages Project



(CC) BY © Jeff Heath and the Dogon and Bangime
Languages Project



(CC) BY © Jeff Heath and the Dogon and Bangime
Languages Project

Andropogon gayanus bisquamulatus .

- **sàwà-sě:** . "tall grass sp."
- **ǎ:mbǎm** . "tall grass sp."



(CC) BY © Jeff Heath and the Dogon and Bangime
Languages Project



(CC) BY © Jeff Heath and the Dogon and Bangime
Languages Project



(CC) BY © Jeff Heath and the Dogon and Bangime
Languages Project

Aristida adscensionis L. . Characteristics: tufted, annual grass, 80cm tall, the nodes and parts of the inflorescence are purple, the inflorescence is a compact panicle with three-awned spikelets. Biotope: dry river course. ([Van Rooyen et al. 2001](#): 88)

- **[sà-sǎŋgǎm] - [yě:-kǔ:]** . "grass sp."



(CC) BY © Jeff Heath and the Dogon and Bangime Languages Project



(CC) BY © Jeff Heath and the Dogon and Bangime Languages Project



(CC) BY © Jeff Heath and the Dogon and Bangime Languages Project

[Aristida funiculata](#) Trin. & Rupr. .

- [sà-sòŋgòm]-gùlś . "grass sp.". Lit. "Aristida-slave".



(CC) BY © Jeff Heath and the Dogon and Bangime Languages Project



(CC) BY © Jeff Heath and the Dogon and Bangime Languages Project



(CC) BY © Jeff Heath and the Dogon and Bangime Languages Project

[Aristida mutabilis nigritiana](#) .

- [sà-sòŋgòm]-gùlś . "grass sp.". Lit. "Aristida-slave".



(CC) BY © Jeff Heath and the Dogon and Bangime Languages Project



(CC) BY © Jeff Heath and the Dogon and Bangime Languages Project



(CC) BY © Jeff Heath and the Dogon and Bangime Languages Project

[Aristida stipoides](#) Lam. .

- kèr-kǎ: ~ cèr-kǎ: . "grass sp."



(CC) BY © Jeff Heath and the Dogon and Bangime
Languages Project



(CC) BY © Jeff Heath and the Dogon and Bangime
Languages Project



(CC) BY © Jeff Heath and the Dogon and Bangime
Languages Project

[Brachiaria xantholeuca](#) (Hack.) Stapf .

- gá:njúm ~ gá:ɲúm . "grass sp."



(CC) BY © Jeff Heath and the Dogon and Bangime
Languages Project

[Cenchrus biflorus](#) Roxb. .

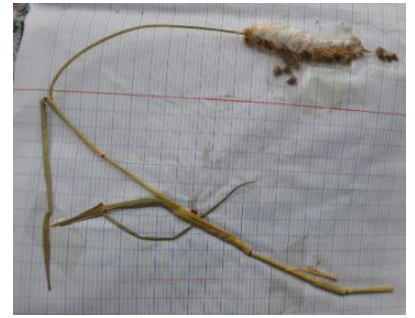
- kómdó . "burrgrass".



(CC) BY © Jeff Heath and the Dogon and Bangime
Languages Project



(CC) BY © Jeff Heath and the Dogon and Bangime
Languages Project



(CC) BY © Jeff Heath and the Dogon and Bangime
Languages Project

Cenchrus prieurii (Kunth) Maire .

- **kòmddò-gùló** . "grass similar to burrgrass". Lit. "burrgrass-slave".



(CC) BY © Jeff Heath and the Dogon and Bangime
Languages Project



(CC) BY © Jeff Heath and the Dogon and Bangime
Languages Project



(CC) BY © Jeff Heath and the Dogon and Bangime
Languages Project

Chloris pilosa Schumach. .

- **kú: cǐrgěy-jô** . "grass sp.".



(CC) BY © Jeff Heath and the Dogon and Bangime
Languages Project



(CC) BY © Jeff Heath and the Dogon and Bangime
Languages Project



(CC) BY © Jeff Heath and the Dogon and Bangime
Languages Project

[Chrysopogon nigritanus](#) (Benth.) Veldkamp .

- péséy . "tall, clumpy grass sp."



(CC) BY © Jeff Heath and the Dogon and Bangime
Languages Project



(CC) BY © Jeff Heath and the Dogon and Bangime
Languages Project



(CC) BY © Jeff Heath and the Dogon and Bangime
Languages Project

[Cymbopogon caesius giganteus](#) .

- èsè-gèrëy . "giant lemon grass sp."



(CC) BY © Jeff Heath and the Dogon and Bangime
Languages Project



(CC) BY © Jeff Heath and the Dogon and Bangime
Languages Project



(CC) BY © Jeff Heath and the Dogon and Bangime
Languages Project

[Cymbopogon schoenanthus](#) (L.) Spreng. .

- jǎ:n-dé:njè . "lemon grass sp."



(CC) BY © Jeff Heath and the Dogon and Bangime
Languages Project



(CC) MARK © Jose Hernandez



(CC) BY-NC © Edinburgh!

[Cynodon dactylon](#) (L.) Pers. .

- **kěrsù** . "couch grass (Bermuda grass)".



(CC) BY © Jeff Heath and the Dogon and Bangime
Languages Project



(CC) BY © Jeff Heath and the Dogon and Bangime
Languages Project



(CC) BY © Jeff Heath and the Dogon and Bangime
Languages Project

[Dactyloctenium aegyptium](#) (L.) Willd. .

- **dáŋgèy** . "grass sp."
- **sàwà: cǐrgěy-jô:** . "grass sp."



(CC) BY © Jeff Heath and the Dogon and Bangime
Languages Project



(CC) BY © Jeff Heath and the Dogon and Bangime
Languages Project



(CC) BY © Jeff Heath and the Dogon and Bangime
Languages Project

[Diheteropogon hagerupii](#) Hitchc. .

- **kèr-kǎ:** ~ **cèr-kǎ:** . "grass sp."



(CC) BY © Jeff Heath and the Dogon and Bangime
Languages Project



(CC) BY © Jeff Heath and the Dogon and Bangime
Languages Project



(CC) BY © Jeff Heath and the Dogon and Bangime
Languages Project

[Echinochloa pyramidalis](#) (Lam.) Hitchc. & Chase .

- **nǐ:yⁿi-pǎ:yⁿ** . "tall grass sp." . Lit. "bird-fonio".



(CC) BY © Jeff Heath and the Dogon and Bangime
Languages Project



(CC) BY © Jeff Heath and the Dogon and Bangime
Languages Project



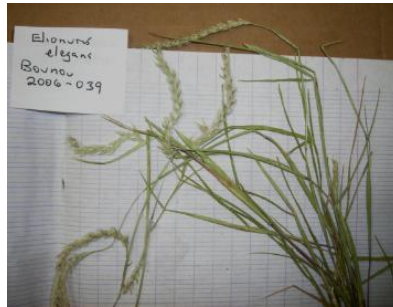
(CC) BY © Jeff Heath and the Dogon and Bangime
Languages Project

Elionurus elegans Kunth .

- **pó:-bèré-nàḡá-yówó** . "grass sp."



(CC) BY © Jeff Heath and the Dogon and Bangime Languages Project



(CC) BY © Jeff Heath and the Dogon and Bangime Languages Project



(CC) BY © Jeff Heath and the Dogon and Bangime Languages Project

Enteropogon prieurii (Kunth) Clayton .

- **jàmsěy** . "grass sp."



(CC) BY © Jeff Heath and the Dogon and Bangime Languages Project



(CC) BY © Jeff Heath and the Dogon and Bangime Languages Project



(CC) BY © Jeff Heath and the Dogon and Bangime Languages Project

Eragrostis ciliaris (L.) R.Br. .

- **nǎy^{fi}-sàwâ** . "grass sp.". Lit. "bird-grass".



(CC) MARK © USDA NRCS PLANTS Database



(CC) BY © Jeff Heath and the Dogon and Bangime Languages Project



(CC) BY © Jeff Heath and the Dogon and Bangime Languages Project

[Eragrostis gangetica](#) (Roxb.) Steud. .

- [sàwà-sè:] -gùló . "grass sp.". Lit. "Andropogon-slave".



(CC) BY © Jeff Heath and the Dogon and Bangime Languages Project



(CC) BY-NC-SA © Missouri BG!



(CC) BY © Jeff Heath and the Dogon and Bangime Languages Project

[Eragrostis tremula](#) Hochst. ex Steud. .

- sàwà:-yòròló . "grass sp.".



(CC) BY © Jeff Heath and the Dogon and Bangime Languages Project



(CC) BY © Jeff Heath and the Dogon and Bangime Languages Project



(CC) BY © Jeff Heath and the Dogon and Bangime Languages Project

[Loudetia togoensis](#) (Pilg.) C.E.Hubb. .

- **sà-sòṅgòṃ ná:** . "grass sp.". Lit. "Aristida main".



(CC) BY © Jeff Heath and the Dogon and Bangime
Languages Project

[Oryza barthii](#) A.Chev. .

- **à:rà-gùló** . "wild rice sp.". Lit. "rice-slave".



(CC) BY © Jeff Heath and the Dogon and Bangime
Languages Project



(CC) BY © Jeff Heath and the Dogon and Bangime
Languages Project



(CC) BY © Jeff Heath and the Dogon and Bangime
Languages Project

[Oxytenanthera abyssinica](#) (A.Rich.) Munro .

- **jirⁿèy-jirⁿěy** . "bamboo".



(CC) BY-NC-SA © Research Institute Senckenberg



(CC) BY-NC-SA © Research Institute Senckenberg



(CC) BY © Jeff Heath and the Dogon and Bangime
Languages Project

[Panicum laetum](#) Kunth .

- **sà:-yú:** . "wild fonio (grass)".



(CC) BY © Jeff Heath and the Dogon and Bangime Languages Project



(CC) BY-NC-SA © Missouri BG!



(CC) BY © Jeff Heath and the Dogon and Bangime Languages Project

[Panicum subalbidum](#) Kunth .

- **bà:r"àm-băm** . "tall grass sp."



(CC) BY © Jeff Heath and the Dogon and Bangime Languages Project



(CC) BY © Jeff Heath and the Dogon and Bangime Languages Project



(CC) BY © Jeff Heath and the Dogon and Bangime Languages Project

[Paspalum scrobiculatum](#) L. .

- **bàrà:-sàwá:** . "grass sp."



(CC) BY © David Eickhoff



(CC) BY © Jeff Heath and the Dogon and Bangime Languages Project



(CC) BY © David Eickhoff

Pennisetum pedicellatum Trin. .

- **sàr"àmbũ:** . "grass sp."



(CC) BY-NC-SA © Research Institute Senckenberg



(CC) BY © Jeff Heath and the Dogon and Bangime Languages Project



(CC) BY © Jeff Heath and the Dogon and Bangime Languages Project

Schizachyrium exile (Hochst.) Pilg. .

- **kèr-kǒ:** ~ **cèr-kǒ:** . "reddish grass p."



(CC) BY © Jeff Heath and the Dogon and Bangime Languages Project



(CC) BY © Jeff Heath and the Dogon and Bangime Languages Project

[Schoenefeldia gracilis](#) Kunth .

- **sàwà: kǐrgěy-tâ:n** . "grass sp."



(CC) BY-NC-SA © Research Institute Senckenberg



(CC) BY-NC-SA © Research Institute Senckenberg



(CC) BY © Jeff Heath and the Dogon and Bangime Languages Project

[Sorghum arundinaceum](#) (Desv.) Stapf .

- **èmèyⁿ-sá:rá** . "grass sp."



(CC) BY-NC © Petra Ballings



(CC) BY-NC © Petra Ballings



(CC) BY © Jeff Heath and the Dogon and Bangime Languages Project

[Tripogon minimus](#) (A.Rich.) Hochst. ex Steud. .

- jàsúm-jàsàrà . "tiny grass sp."



(CC) BY-NC-SA © Research Institute Senckenberg



(CC) BY © Jeff Heath and the Dogon and Bangime Languages Project



(CC) BY © Jeff Heath and the Dogon and Bangime Languages Project

Class: Magnoliopsida

Order: Apiales

Family: Apiaceae

[Ammodaucus leucotrichus](#) Coss. .

- àrgà-púnò . "spice sp."



(CC) BY-SA ©

Order: Asterales

Family: Asteraceae

[Acanthospermum hispidum](#) .

- mùnjù-cěm . "prickly herb sp."
- mùnjù-dòró . "prickly herb sp."



(CC) BY © Jeff Heath and the Dogon and Bangime Languages Project



(CC) BY © Jeff Heath and the Dogon and Bangime Languages Project

Blumea axillaris .

- **sàlà:tù-gùló** . "herb sp."



(CC) BY © Jeff Heath and the Dogon and Bangime Languages Project



(CC) BY © Jeff Heath and the Dogon and Bangime Languages Project



(CC) BY © Jeff Heath and the Dogon and Bangime Languages Project

Blumea bojeri .

- **nùmbù-sàwâ** : "herb sp."
- **nùmbù-bèrú** . "herb sp."



(CC) BY © Jeff Heath and the Dogon and Bangime Languages Project

[Eclipta prostrata](#) .

- pèrè-kómdó . "herb sp."



(CC) BY © Jeff Heath and the Dogon and Bangime Languages Project



(CC) BY © Jeff Heath and the Dogon and Bangime Languages Project



(CC) BY © Jeff Heath and the Dogon and Bangime Languages Project

[Pentanema indicum](#) .

- [yàr-gò:rò] -sàwâ: . "bush sp."



(CC) BY © Lalithamba



(CC) BY © Jeff Heath and the Dogon and Bangime Languages Project



(CC) BY-NC © Edinburgh!

Order: Boraginales

Family: Boraginaceae

[Cordia myxa](#) L. .

- ànsà:rà-kùrô: . "tree sp."



(CC) BY © Jeff Heath and the Dogon and Bangime Languages Project



(CC) BY-NC-SA © Research Institute Senckenberg



(CC) BY © Jeff Heath and the Dogon and Bangime Languages Project

Order: Brassicales

Family: Capparaceae

[Boscia senegalensis](#) Lam. .

- èrêy . "shrub sp."



(CC) BY © Jeff Heath and the Dogon and Bangime Languages Project



(CC) BY © Jeff Heath and the Dogon and Bangime Languages Project



(CC) BY © Jeff Heath and the Dogon and Bangime Languages Project

[Maerua crassifolia](#) Forssk. .

- mǎykĩr^{né} . "tree sp."
- súndù . "tree sp."



(CC) BY © Jeff Heath and the Dogon and Bangime
Languages Project



(CC) BY © Jeff Heath and the Dogon and Bangime
Languages Project



(CC) BY © Jeff Heath and the Dogon and Bangime
Languages Project

Family: Cleomaceae

[Arivela viscosa](#) .

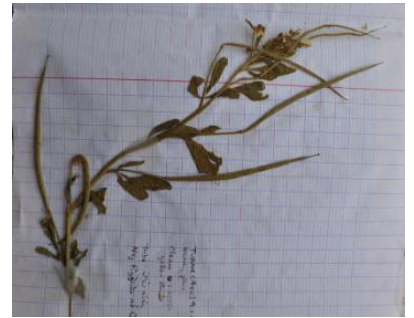
- jàmbĩ-sĩrĩ ár"à . "herb sp."
- cèpèl-gùlól . "herb sp."



(CC) BY © Jeff Heath and the Dogon and Bangime
Languages Project



(CC) BY © Jeff Heath and the Dogon and Bangime
Languages Project



(CC) BY © Jeff Heath and the Dogon and Bangime
Languages Project

[Gynandropsis gynandra](#) L. . Characteristics: annual herb; palmately compound leaves; white flowers; fruit is an elongated capsule on a long stalk. Biotope: dry river course, mountains. ([Van Rooyen et al. 2001](#): 164; [Burke 2007](#): 80)

- jàmbĩ-sĩrĩ yǎ: . "herb sp."



(CC) BY © Jeff Heath and the Dogon and Bangime Languages Project



(CC) BY © Forest & Kim Starr

Order: Caryophyllales

Family: Amaranthaceae

[Achyranthes aspera sicula](#) .

- cèngù- [i-r^u] . "herb sp."
- cèngù- [i-rⁱ] . "herb sp."



(CC) BY © Jeff Heath and the Dogon and Bangime Languages Project



(CC) BY © Jeff Heath and the Dogon and Bangime Languages Project



(CC) BY © Jeff Heath and the Dogon and Bangime Languages Project

[Amaranthus graecizans](#) L. .

- jùgú . "herb sp."



(CC) BY © Jeff Heath and the Dogon and Bangime Languages Project



(CC) BY © Jeff Heath and the Dogon and Bangime Languages Project



(CC) BY © Jeff Heath and the Dogon and Bangime Languages Project

[Celosia argentea](#) L. .

- **sàwà: kù:-pîlè** . "herb sp."



(CC) BY-NC-SA © Marco Schmidt



(CC) BY-NC-SA © Marco Schmidt



(CC) BY © Jeff Heath and the Dogon and Bangime Languages Project

[Celosia trigyna](#) L. .

- **yĩ-tě: sàwà:** . "herb sp."



(CC) BY © Jeff Heath and the Dogon and Bangime Languages Project



(CC) BY © Jeff Heath and the Dogon and Bangime Languages Project



(CC) BY © Jeff Heath and the Dogon and Bangime Languages Project

Family: Nyctaginaceae

[Boerhavia diffusa](#) L. .

- **sàr"à-kúyò-m bànà-kù:** . "herb sp. (hogweed)". Lit. "squirrel's cassava".



(CC) BY © Jeff Heath and the Dogon and Bangime Languages Project



(CC) BY © Jeff Heath and the Dogon and Bangime Languages Project



(CC) BY © Jeff Heath and the Dogon and Bangime Languages Project

[Boerhavia repens](#) L. . Characteristics: annual herb with thick roots and slender, hairy stems; egg- or lance-shaped leaves (3 cm); usually 2-7 white, pink or mauve flowers in clusters at the tips of shoots. Biotope: dry river course. ([Van Rooyen et al. 2001](#): 126)

- **sàr"à-kúyò-m bànà-kù:** . "herb sp. (hogweed)". Lit. "squirrel's cassava".
- **sòm-dàw"á** . "herb sp. (hogweed)".



(CC) BY © Jeff Heath and the Dogon and Bangime Languages Project



(CC) BY © Jeff Heath and the Dogon and Bangime Languages Project



(CC) BY © Jeff Heath and the Dogon and Bangime Languages Project

Family: Portulacaceae

[Portulaca oleracea](#) L. .

- **ná:-lèmdê:** . "purslane (weed)". Lit. "cow-tongue".



(CC) BY © Jeff Heath and the Dogon and Bangime
Languages Project



(CC) BY © Forest & Kim Starr



(CC) BY © Jeff Heath and the Dogon and Bangime
Languages Project

Order: Cucurbitales

Family: Cucurbitaceae

[*Citrullus lanatus*](#) (Thunb.) Matsumura & Nakai . Characteristics: annual, creeping herb; the hairy leaves are divided into 3-5 lobes; male and female flowers grow on the same plant and are yellow; the fruit is round with a diameter of 15-20 cm and a yellow and green surface. Biotope: sandy soil, dune. ([Van der Walt and le Riche 1999](#): 110; [Van Rooyen et al. 2001](#): 148)

- kànrⁿà̀yⁿ bārⁿà-w . "watermelon (cultivated, eaten raw)".
- nà:-kànrⁿà̀yⁿ . "watermelon variety (cooked as a vegetable)".



(CC) BY © Jeff Heath and the Dogon and Bangime
Languages Project



Public Domain by Christfried Naumann

[*Coccinia grandis*](#) (L.) Voigt .

- [bèr-bèrè]-kâmâyⁿ . "wild melon sp. (cucumber shape)". Lit. "goatherd-melon".



(CC) BY © Jeff Heath and the Dogon and Bangime
Languages Project



(CC) BY © Jeff Heath and the Dogon and Bangime
Languages Project



(CC) BY © Jeff Heath and the Dogon and Bangime
Languages Project

[Cucurbita](#) Vanhöffen, 1914 .

- gó:rnd . "squash".



PD ©



(CC) BY-SA ©



(CC) BY-SA © Michal Mañas

[Momordica balsamina](#) L. . Characteristics: perennial climber; leaves are divided into 5-7 lobes, the margins toothed; the flowers are white to yellow with fused petals; the egg-shaped fruit is orange to red when ripe and covered with spines; the plant emits an unpleasant smell when bruised. Biotope: savanna, sandy soil. ([Van Rooyen et al. 2001](#): 152)

- [bèr-bèrè] -kâmâyⁿ . "liana sp.".



(CC) BY © Jeff Heath and the Dogon and Bangime
Languages Project



(CC) BY-SA © H. Zell



(CC) BY © Jeff Heath and the Dogon and Bangime
Languages Project

Order: Ericales

Family: Ebenaceae

[Diospyros mespiliformis](#) Hochst. ex A.DC. .

- òwī . "tree sp."



(CC) BY © Jeff Heath and the Dogon and Bangime
Languages Project



(CC) BY © Jeff Heath and the Dogon and Bangime
Languages Project



(CC) BY © Jeff Heath and the Dogon and Bangime
Languages Project

Family: Sapotaceae

[Pouteria alnifolia](#) (Baker) Roberty .

- kɛŋgélè . "tree sp."



(CC) BY-NC-SA © Research Institute Senckenberg



(CC) BY-NC-SA © Research Institute Senckenberg



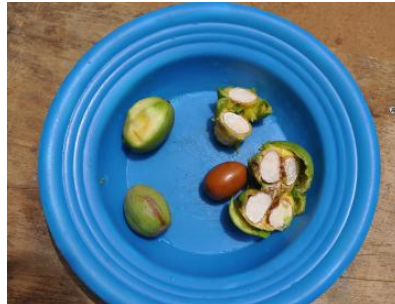
(CC) BY-NC-SA © Research Institute Senckenberg

[Vitellaria paradoxa paradoxa](#) .

- **mīsú** . "karité (tree)".



(CC) BY © Jeff Heath and the Dogon and Bangime Languages Project



(CC) BY © Jeff Heath and the Dogon and Bangime Languages Project



(CC) BY © Jeff Heath and the Dogon and Bangime Languages Project

Order: Fabales

Family: Fabaceae

[Acacia senegal](#) (L.)Willd. .

- **kòr-kòsòrò ár"à** . "gum tree (acacia)".



(CC) BY © Jeff Heath and the Dogon and Bangime
Languages Project



(CC) BY © Jeff Heath and the Dogon and Bangime
Languages Project

[Acacia seyal](#) Delile .

- **sémégěm** . "acacia sp.".
- **bīsèm pílé** . "acacia sp.". Lit. "A.tortilis white".



(CC) BY © Jeff Heath and the Dogon and Bangime
Languages Project



(CC) BY © Jeff Heath and the Dogon and Bangime
Languages Project

[Acacia tortilis](#) (Forssk.)Hayne .

- **bīsěm** . "acacia sp.".



(CC) BY © Jeff Heath and the Dogon and Bangime Languages Project



(CC) BY © Jeff Heath and the Dogon and Bangime Languages Project

[Aeschynomene indica](#) L. .

- **pèlèm-pérù** . "tall herb sp."



(CC) BY © Jeff Heath and the Dogon and Bangime Languages Project



(CC) BY © Jeff Heath and the Dogon and Bangime Languages Project



(CC) BY © Jeff Heath and the Dogon and Bangime Languages Project

[Albizia chevalieri](#) Harms .

- **sùwóřipá:** . "tree sp."



(CC) BY © Jeff Heath and the Dogon and Bangime Languages Project



(CC) BY © Jeff Heath and the Dogon and Bangime Languages Project



(CC) BY © Jeff Heath and the Dogon and Bangime Languages Project

Alysicarpus ovalifolius (Schum.)Leonard .

- **kámgá** . "herb sp."



(CC) BY © Jeff Heath and the Dogon and Bangime
Languages Project



(CC) BY © Jeff Heath and the Dogon and Bangime
Languages Project



(CC) BY © Jeff Heath and the Dogon and Bangime
Languages Project

Bauhinia reticulata DC. .

- **kórpè**: . "tree sp."



(CC) BY © Jeff Heath and the Dogon and Bangime
Languages Project



(CC) BY © Jeff Heath and the Dogon and Bangime
Languages Project



(CC) BY © Jeff Heath and the Dogon and Bangime
Languages Project

Bauhinia rufescens Lam. .

- **sátéllè** . "tree sp."



(CC) BY © Jeff Heath and the Dogon and Bangime
Languages Project



(CC) BY © Jeff Heath and the Dogon and Bangime
Languages Project



(CC) BY © Jeff Heath and the Dogon and Bangime
Languages Project

[Cassia sieberiana](#) DC. .

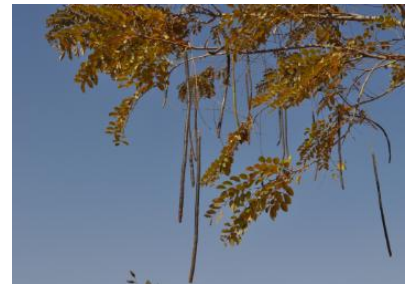
- séwrēm . "tree sp."



(CC) BY © Jeff Heath and the Dogon and Bangime
Languages Project



(CC) BY © Jeff Heath and the Dogon and Bangime
Languages Project



(CC) BY © Jeff Heath and the Dogon and Bangime
Languages Project

[Chamaecrista absus](#) (L.)H.S.Irwin & Barneby .

- lù:rò-gàngàrá . "bush sp.". Lit. "snake-Cassia".



(CC) BY © Jeff Heath and the Dogon and Bangime
Languages Project



(CC) BY © Jeff Heath and the Dogon and Bangime
Languages Project



(CC) BY © Jeff Heath and the Dogon and Bangime
Languages Project

[Chamaecrista mimosoides](#) (L.)Greene .

- **sàwà:-[bèrè-yí:]** . "herb sp." . Lit. "herb-stick".
- **[tù-tù:] -bëndè** . "herb sp." .



(CC) BY © Jeff Heath and the Dogon and Bangime
Languages Project



(CC) BY © Jeff Heath and the Dogon and Bangime
Languages Project

[Chamaecrista nigricans](#) (Vahl)Greene .

- **àsàpèrú** . "herb sp." .
- **wáŋgárá-bú:bù** . "herb sp." . From Ful .



(CC) BY © Jeff Heath and the Dogon and Bangime
Languages Project



(CC) BY © Jeff Heath and the Dogon and Bangime
Languages Project



(CC) BY © Jeff Heath and the Dogon and Bangime
Languages Project

[Crotalaria atrorubens](#) Benth. .

- **sàwà:** [kú: dúgù] . "herb sp.". Lit. "grass [head big]".



(CC) BY © Jeff Heath and the Dogon and Bangime
Languages Project



(CC) BY © Jeff Heath and the Dogon and Bangime
Languages Project



(CC) BY © Jeff Heath and the Dogon and Bangime
Languages Project

[Crotalaria comosa](#) Baker .

- **gò:-dòró** . "herb sp.".



(CC) BY © Jeff Heath and the Dogon and Bangime Languages Project



(CC) BY © Jeff Heath and the Dogon and Bangime Languages Project



(CC) BY © Jeff Heath and the Dogon and Bangime Languages Project

[Crotalaria cylindrocarpa](#) DC. .

- èlèy-gùlś . "herb sp.". Lit. "peanut-slave".



(CC) BY-NC-SA © Research Institute Senckenberg



(CC) BY-NC-SA © Research Institute Senckenberg



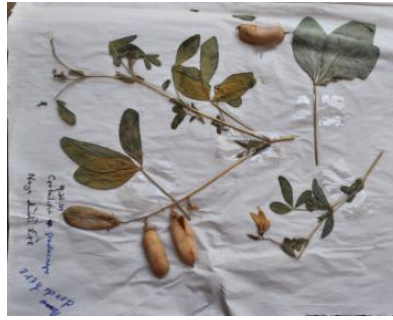
(CC) BY-NC-SA © Research Institute Senckenberg

[Crotalaria podocarpa](#) DC. . Characteristics: annual herb with spreading stems; up to 3 cm tall; trifoliate leaves; pale yellow flowers; fruit is an inflated pod with stiff hair. Biotope: sandy soil. ([Van Rooyen et al. 2001](#): 130)

- nǎ-nǎw"ě-m élèy . "herb sp.". Lit. "cat's peanut".



(CC) BY © Jeff Heath and the Dogon and Bangime
Languages Project



(CC) BY © Jeff Heath and the Dogon and Bangime
Languages Project



(CC) BY © Jeff Heath and the Dogon and Bangime
Languages Project

Crotalaria retusa L. .

- **gò:-dòró** . "herb sp."



(CC) BY © Jeff Heath and the Dogon and Bangime
Languages Project



(CC) BY © Jeff Heath and the Dogon and Bangime
Languages Project



(CC) BY © Jeff Heath and the Dogon and Bangime
Languages Project

Dalbergia melanoxylon Guill. & Perr. .

- **kèrkèlé** . "tree sp."
- **kīlīngí** . "tree sp."



(CC) BY © Jeff Heath and the Dogon and Bangime
Languages Project



(CC) BY © Jeff Heath and the Dogon and Bangime
Languages Project



(CC) BY © Jeff Heath and the Dogon and Bangime
Languages Project

[Daniellia oliveri](#) (Rolfe) Hutch. & Dalziel .

- **késéy** . "tree sp."



(CC) BY © Jeff Heath and the Dogon and Bangime
Languages Project



(CC) BY © Jeff Heath and the Dogon and Bangime
Languages Project



(CC) BY © Jeff Heath and the Dogon and Bangime
Languages Project

[Desmodium hirtum](#) Guill. & Perr. .

- **[pèlèm-pèrù]-gùlól** . "tree sp."



(CC) BY © Jeff Heath and the Dogon and Bangime Languages Project



(CC) BY © Jeff Heath and the Dogon and Bangime Languages Project



(CC) BY © Jeff Heath and the Dogon and Bangime Languages Project

Detarium microcarpum Guill. & Perr. .

- **pè:lú** . "tree sp."



(CC) BY © Jeff Heath and the Dogon and Bangime Languages Project



(CC) BY-NC-SA © Research Institute Senckenberg



(CC) BY © Jeff Heath and the Dogon and Bangime Languages Project

Faidherbia albida (Delile)A.Chev. .

- **kònjöy** . "balanzan tree".



(CC) BY-NC © Bart Wursten



(CC) BY-NC-SA © Research Institute Senckenberg



(CC) BY-NC © Bart Wursten

[Indigofera astragalina](#) DC. .

- **gàlà-gùló** . "herb sp.". Lit. "indigo-slave".



(CC) BY © Jeff Heath and the Dogon and Bangime Languages Project



(CC) BY © Jeff Heath and the Dogon and Bangime Languages Project



(CC) BY © Jeff Heath and the Dogon and Bangime Languages Project

[Indigofera coerulea occidentalis](#) .

- **gàrà-gàlàrà** . "shrub sp.". Lit. "indigo-...".



(CC) BY © Jeff Heath and the Dogon and Bangime Languages Project



(CC) BY © Jeff Heath and the Dogon and Bangime Languages Project

[Indigofera oblongifolia](#) Forssk. .

- **gàrà-gàlàrà** . "herb sp.".



(CC) BY © Jeff Heath and the Dogon and Bangime Languages Project



(CC) BY © Jeff Heath and the Dogon and Bangime Languages Project



(CC) BY © Jeff Heath and the Dogon and Bangime Languages Project

[Indigofera omissa](#) J.B.Gillett .

- **tàbà-gàlá** . "shrub sp.". Lit. "...-indigo".



(CC) BY © Jeff Heath and the Dogon and Bangime Languages Project



(CC) BY © Jeff Heath and the Dogon and Bangime Languages Project



(CC) BY © Jeff Heath and the Dogon and Bangime Languages Project

[Indigofera tinctoria tinctoria](#) .

- gârâ: . "herb sp."



(CC) BY © Jeff Heath and the Dogon and Bangime Languages Project



(CC) BY © Jeff Heath and the Dogon and Bangime Languages Project



(CC) BY © Jeff Heath and the Dogon and Bangime Languages Project

[Parkia biglobosa](#) (Jacq.)G.Don .

- nórⁿÿⁿ . "locust-bean (nééré) tree".



(CC) BY-NC-SA © Research Institute Senckenberg



(CC) BY-NC-SA © Research Institute Senckenberg



(CC) BY-SA ©

[Prosopis africana](#) (Guill. & Perr.)Taub. .

- **kĩrà:-ná:** . "a wood for blacksmiths' charcoal".
- **cĩrâ:** . "a wood for blacksmiths' charcoal".



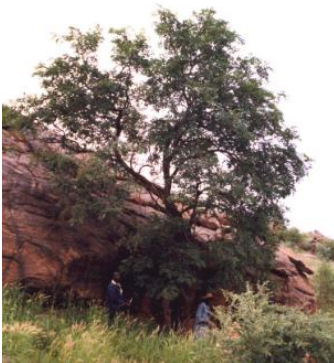
(CC) BY © Jeff Heath and the Dogon and Bangime
Languages Project



(CC) BY © Jeff Heath and the Dogon and Bangime
Languages Project

[Pterocarpus erinaceus](#) Poir. .

- **àyăy** . "tree sp.".



(CC) BY © Jeff Heath and the Dogon and Bangime
Languages Project



(CC) BY © Jeff Heath and the Dogon and Bangime
Languages Project



(CC) BY © Jeff Heath and the Dogon and Bangime
Languages Project

[Pterocarpus lucens](#) Guill. & Perr. .

- **pílėy** . "tree sp.".



(CC) BY-NC-SA © Research Institute Senckenberg



(CC) BY-NC-SA © Research Institute Senckenberg



(CC) BY © Jeff Heath and the Dogon and Bangime Languages Project

Senna obtusifolia (L.)H.S.Irwin & Barneby .

- gàngàrá . "herb sp."



(CC) BY © Jeff Heath and the Dogon and Bangime Languages Project



(CC) PUBLICDOMAIN © Michael Kesi



(CC) BY © Jeff Heath and the Dogon and Bangime Languages Project

Senna occidentalis (L.)Link .

- débbò-lóbbò . "bush sp.". From Ful "woman-pretty" .



(CC) BY-NC © Bart Wursten



(CC) BY © John Tann



Public Domain by

[Tamarindus indica](#) L. .

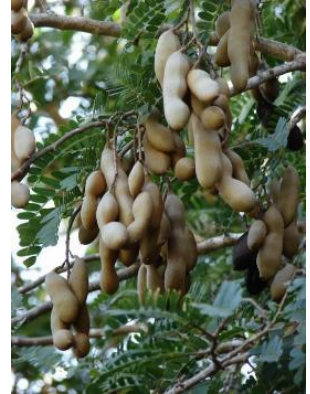
- òmdô: . "tamarind".



(CC) BY © Jeff Heath and the Dogon and Bangime
Languages Project



(CC) BY © Jeff Heath and the Dogon and Bangime
Languages Project



(CC) BY © Forest & Kim Starr

[Tephrosia bracteolata bracteolata](#) .

- [ǎn-lèw] -kár^á . "herb or shrub sp".
- sòm bèrè kámbé: . "herb or shrub sp".



(CC) BY © Jeff Heath and the Dogon and Bangime
Languages Project



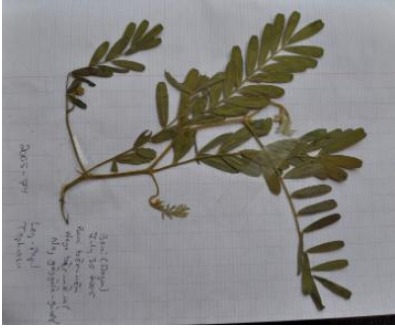
(CC) BY © Jeff Heath and the Dogon and Bangime
Languages Project



(CC) BY © Jeff Heath and the Dogon and Bangime
Languages Project

[Tephrosia purpurea leptostachya](#) .

- bèr-něm . "herb sp".



(CC) BY © Jeff Heath and the Dogon and Bangime Languages Project



(CC) BY © Jeff Heath and the Dogon and Bangime Languages Project



(CC) BY © Jeff Heath and the Dogon and Bangime Languages Project

[Vachellia nilotica](#) .

- bá:r"ám . "acacia sp."



(CC) BY © Jeff Heath and the Dogon and Bangime Languages Project



(CC) BY © Jeff Heath and the Dogon and Bangime Languages Project



(CC) BY © Jeff Heath and the Dogon and Bangime Languages Project

[Vigna](#) .

- nùw"i: pèrêm . "wild cow-pea".



(CC) BY © Jeff Heath and the Dogon and Bangime Languages Project



(CC) BY © Jeff Heath and the Dogon and Bangime Languages Project



(CC) BY © Jeff Heath and the Dogon and Bangime Languages Project

[Zornia glochidiata](#) DC. .

- dèŋém-mé:rè ~ dèŋém-bé:rè . "herb sp.". From Ful .



(CC) BY-NC © Bart Wursten



(CC) BY-NC © Bart Wursten



(CC) BY-NC © Bart Wursten

Order: Gentianales

Family: Apocynaceae

[Calotropis procera](#) .

- gù:-gǔ: . "shrub sp.".



(CC) BY © Jeff Heath and the Dogon and Bangime

Languages Project



(CC) BY © Jeff Heath and the Dogon and Bangime

Languages Project

[Caralluma acutangula](#) Decne. .

- [tĩ-tâ:-m nàr"à] kúnùm . "succulent plant sp.".



(CC) BY © Jeff Heath and the Dogon and Bangime Languages Project



(CC) BY © Jeff Heath and the Dogon and Bangime Languages Project



(CC) BY © Jeff Heath and the Dogon and Bangime Languages Project

[Saba senegalensis](#) (A. DC.) Pichon .

- **kàmâyⁿ** . "zaban (woody liana)".



(CC) BY-NC-SA © Research Institute Senckenberg



(CC) BY © Jeff Heath and the Dogon and Bangime Languages Project



(CC) BY-NC-SA © Research Institute Senckenberg

Family: Rubiaceae

[Feretia apodanthera](#) Delile .

- **jimbê** : "shrub sp.". Lit. "stirring stick".



(CC) BY © Jeff Heath and the Dogon and Bangime Languages Project



(CC) BY © Jeff Heath and the Dogon and Bangime Languages Project

Mitracarpus hirtus (L.) DC. .

- **kòsɔy sáwà:** . "herb sp.". Lit. "harvest's grass".
- **ná:-lɛmdê:** . "herb sp.". Lit. "cow-tail".



(CC) BY © Jeff Heath and the Dogon and Bangime
Languages Project



(CC) BY © Jeff Heath and the Dogon and Bangime
Languages Project



(CC) BY © Jeff Heath and the Dogon and Bangime
Languages Project

Mitragyna inermis (Willd.) Kuntze .

- **kô:l** . "tree sp.". From Ful .



(CC) BY © Jeff Heath and the Dogon and Bangime
Languages Project



(CC) BY © Jeff Heath and the Dogon and Bangime
Languages Project



(CC) BY © Jeff Heath and the Dogon and Bangime
Languages Project

Oldenlandia corymbosa L. .

- **sàwà: tɿŋgírèy** . "herb sp.".



(CC) BY © Forest & Kim Starr



(CC) BY-NC-SA © Research Institute Senckenberg



(CC) BY © Forest & Kim Starr

Sarcocephalus latifolius Sm. .

- **kú-kóró** . "tree sp."



(CC) BY-NC-SA © Research Institute Senckenberg



(CC) BY-NC-SA © Research Institute Senckenberg



(CC) BY © Jeff Heath and the Dogon and Bangime Languages Project

Order: Lamiales

Family: Acanthaceae

Hygrophila auriculata (Hamilt.) M.R. Almeida & S.M. Almeida .

- **tĩ-tã:-m sàmbà:** . "herb sp."



(CC) BY © Jeff Heath and the Dogon and Bangime
Languages Project



(CC) BY © Jeff Heath and the Dogon and Bangime
Languages Project



(CC) BY © Jeff Heath and the Dogon and Bangime
Languages Project

Nelsonia canescens (Lam.) Spreng. .

- **ólóy ómdò:** . "herb sp."
- **sàwà:-òmdô:** . "herb sp."



(CC) BY-NC © Helen Pickering



(CC) BY-NC-SA © Research Institute Senckenberg



(CC) BY © Jeff Heath and the Dogon and Bangime
Languages Project

Family: Lamiaceae

Hyptis spicigera (Aubl.) Harley & J.F.B.Pastore .

- **bàrà-pèdĩngè yǎ:** . "herb sp."
- **gàlà sàwà: yǎ:** . "herb sp."



(CC) BY © Jeff Heath and the Dogon and Bangime
Languages Project



(CC) BY © Jeff Heath and the Dogon and Bangime
Languages Project



(CC) BY-NC-SA © Research Institute Senckenberg

[Leucas martinicensis](#) (Jacq.) R.Br. .

- **sàwà: dǒyⁿ** . "herb sp."



(CC) BY © Jeff Heath and the Dogon and Bangime
Languages Project



(CC) BY-NC © Bart Wursten



(CC) BY © Jeff Heath and the Dogon and Bangime
Languages Project

[Ocimum americanum](#) L. . Characteristics: herb; up to 50 cm tall; elongated leaves in clusters; pink to white flowers; .
([Burke 2007](#): 86)

- **jírè-figísì** . "bush sp."



(CC) BY © Jeff Heath and the Dogon and Bangime Languages Project



(CC) BY © Jeff Heath and the Dogon and Bangime Languages Project



(CC) BY © Jeff Heath and the Dogon and Bangime Languages Project

Family: Orobanchaceae

[*Striga hermonthica*](#) (Del.) Benth. .

- **díwéy** . "herb sp."



(CC) BY-NC-SA © Research Institute Senckenberg



(CC) BY-NC-SA © Research Institute Senckenberg



(CC) BY-NC-SA © Delile, A.R., 1813. Description de l'Égypte

Family: Pedaliaceae

[*Ceratotheca sesamoides*](#) Endl. .

- **àrɲèy-sàwâ** . "herb sp."
- **gí-gõmnò** . "herb sp."
- **sàr"àkúyòm yàgùmyà** . "herb sp."



(CC) BY © Jeff Heath and the Dogon and Bangime Languages Project



(CC) BY © Jeff Heath and the Dogon and Bangime Languages Project



(CC) BY © Jeff Heath and the Dogon and Bangime Languages Project

Sesamum alatum P. Thonn. .

- **nàmjù-gùló** . "wild sesame (herb)". Lit. "sesame-slave".



(CC) BY-NC © Bart Wursten



(CC) BY-NC © Bart Wursten



(CC) BY-NC © Bart Wursten

Family: Plantaginaceae

Scoparia dulcis L. .

- **fīm-fīm** . "herb sp.".



(CC) BY © India Biodiversity Portal



(CC) BY-NC-SA © Research Institute Senckenberg



(CC) BY-SA ©

Order: Malpighiales

Family: Euphorbiaceae

[*Chrozophora brocchiana*](#) (Vis.) Schweinf. .

- **jirⁿëy d̀ngó^r̀** . "bush sp.". Lit. "rainy.season become.skinny".



(CC) BY © Jeff Heath and the Dogon and Bangime Languages Project



(CC) BY © Jeff Heath and the Dogon and Bangime Languages Project



(CC) BY © Jeff Heath and the Dogon and Bangime Languages Project

[*Euphorbia austro-occidentalis*](#) Thell. .

- **[pèl-gìrè] -ìrù** . "prostrate herb sp.". Lit. "dove-breast".



(CC) BY © Jeff Heath and the Dogon and Bangime Languages Project



(CC) BY © Jeff Heath and the Dogon and Bangime Languages Project



(CC) BY © Jeff Heath and the Dogon and Bangime Languages Project

[*Euphorbia balsamifera*](#) Aiton .

- **jìⁿ-jäⁿ** . "balsam-spurge (shrub)".



(CC) BY © Jeff Heath and the Dogon and Bangime
Languages Project



(CC) BY © Jeff Heath and the Dogon and Bangime
Languages Project



(CC) BY-NC © Edinburgh!

[Euphorbia chapmanii](#) Oudejans .

- **ḏi:** . "thorny bush".

[Euphorbia hirta](#) L. .

- **dàrⁿà-sàwâ:** . "erect herb sp.".
- **[pèl-gìrè] -ìrù** . "erect herb sp.". Lit. "dove-breast".



(CC) BY © Jeff Heath and the Dogon and Bangime
Languages Project



(CC) BY © Jeff Heath and the Dogon and Bangime
Languages Project



(CC) BY © India Biodiversity Portal

[Jatropha gossypifolia](#) L. .

- **ḏ:** **kilè:** . "shrub sp. (planted)".



(CC) BY © Jeff Heath and the Dogon and Bangime Languages Project



(CC) BY © Jeff Heath and the Dogon and Bangime Languages Project



(CC) BY © Jeff Heath and the Dogon and Bangime Languages Project

[Ricinus communis](#) L. .

- sàwà:-bòròkéré . "shrub sp."



(CC) BY-SA © Andreas Fröh (Andel)



(CC) BY-SA © H. Zell



(CC) BY © Jeff Heath and the Dogon and Bangime Languages Project

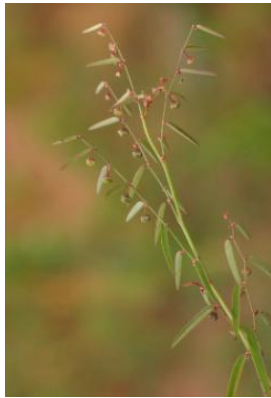
Family: Phyllanthaceae

[Phyllanthus pentandrus](#) Schumach. & Thonn. .

- òr-ní: . "herb sp."
- gàrà:-sàwá: . "herb sp."



(CC) BY © Jeff Heath and the Dogon and Bangime Languages Project



(CC) BY-NC © Bart Wursten



(CC) BY-NC © Bart Wursten

Order: Malvales

Family: Malvaceae

[Adansonia digitata](#) L. .

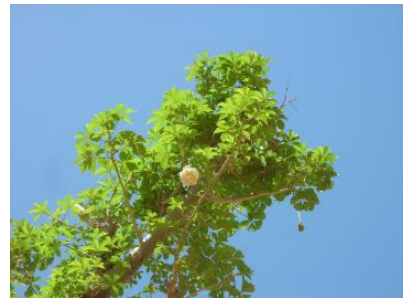
- ḁ̀s̀r̀ó . "baobab tree".



Public Domain by unknown



(CC) BY © Jeff Heath and the Dogon and Bangime Languages Project



(CC) BY © Jeff Heath and the Dogon and Bangime Languages Project

[Ceiba pentandra](#) (L.) Gaertn. .

- jím . "tree sp.".



(CC) BY © Jeff Heath and the Dogon and Bangime
Languages Project



(CC) BY-NC-SA © Reinaldo Aguilar

Cola cordifolia (Cav.) R. Br. .

- **kě:lěy ~ cě:lěy** . "tree sp."



(CC) BY © Jeff Heath and the Dogon and Bangime
Languages Project



(CC) BY © Jeff Heath and the Dogon and Bangime
Languages Project



(CC) BY © Jeff Heath and the Dogon and Bangime
Languages Project

Corchorus Patrity, 1965 .

- **òrò-bónnó** . "herb sp."



(CC) BY-NC-SA © Research Institute Senckenberg



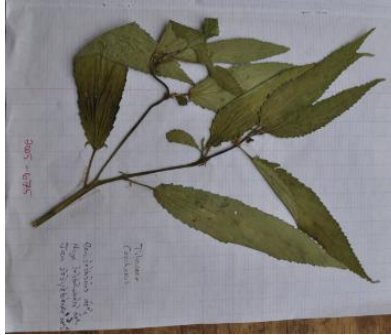
(CC) BY-NC © Bart Wursten

Corchorus olitorius L. .

- òrò-bònnò árnà . "herb sp.". Lit. "... male".



(CC) BY © Jeff Heath and the Dogon and Bangime Languages Project



(CC) BY © Jeff Heath and the Dogon and Bangime Languages Project

Grewia villosa Willd. .

- òsòy-gúrdé: . "shrub sp."
- òsòy-gúrtêl . "shrub sp."



(CC) BY-NC © Bart Wursten



(CC) BY © Jeff Heath and the Dogon and Bangime Languages Project



(CC) BY-NC © Bart Wursten

Hibiscus cannabinus L. .

- ènjì:-kúnjùm . "erect herb sp."
- bàlàpà:má . "erect herb sp."
- ènjì:-kúnjùm pílé . "erect herb sp.". Lit. "... white".
- ènjì:-kúnjùm bárⁿàwⁿ . "erect herb sp.". Lit. "... red".



(CC) BY © Jeff Heath and the Dogon and Bangime
Languages Project



(CC) BY © Jeff Heath and the Dogon and Bangime
Languages Project



(CC) BY © Jeff Heath and the Dogon and Bangime
Languages Project

Hibiscus longisepalus Hochr. .

- **yàgùm-yǎ:** . "bush sp."



(CC) BY © Jeff Heath and the Dogon and Bangime
Languages Project



(CC) BY © Jeff Heath and the Dogon and Bangime
Languages Project



(CC) BY © Jeff Heath and the Dogon and Bangime
Languages Project

Hibiscus ovalifolius (Forssk.) Vahl .

- **sèkúrù ~ sègúrù** . "bush sp."



(CC) BY © Jeff Heath and the Dogon and Bangime Languages Project



(CC) BY © Jeff Heath and the Dogon and Bangime Languages Project

Sida abutifolia Mill. .

- [bèr-bèrè] -òmdô: . "bush sp.". Lit. "goatherd-tamarind".



(CC) BY-NC © inaturalist



(CC) BY-NC © Picasa



(CC) BY © Jeff Heath and the Dogon and Bangime Languages Project

Sida urens L. .

- [yàgùm-yà:] -gùló . "bush sp.".



(CC) BY-NC-SA © Research Institute Senckenberg



(CC) BY © Jeff Heath and the Dogon and Bangime Languages Project



(CC) BY © Jeff Heath and the Dogon and Bangime Languages Project

[Waltheria indica](#) L. .

- ár-kùrôm . "bush sp."
- gõ: òw"r"ù . "bush sp.". Lit. "fire's in.law".



(CC) BY © Jeff Heath and the Dogon and Bangime Languages Project



(CC) BY © Jeff Heath and the Dogon and Bangime Languages Project



(CC) BY © Jeff Heath and the Dogon and Bangime Languages Project

Order: Myrtales

Family: Lythraceae

[Ammannia auriculata](#) Willd. .

- désè . "prostrate herb sp."
- nĩ: sàwà: . "prostrate herb sp.". Lit. "water's grass".



(CC) BY © Jeff Heath and the Dogon and Bangime Languages Project



(CC) BY © Jeff Heath and the Dogon and Bangime Languages Project



(CC) BY © Jeff Heath and the Dogon and Bangime Languages Project

[Lawsonia inermis](#) L. .

- pútù . "henna bush".



(CC) BY © Jeff Heath and the Dogon and Bangime Languages Project

Family: Myrtaceae

Psidium guajava .

- **bīyà:gú** . "guava".



(CC) BY ©



(CC) BY © Forest & Kim Starr



(CC) MARK © Galapagos Islands.

Family: Onagraceae

Ludwigia erecta (L.) Hara .

- **nī: ðrò-bònnò** . "herb sp.". Lit. "water's Corchorus".
- **nī: sàwà:** . "herb sp.". Lit. "water's grass".



(CC) BY © Jeff Heath and the Dogon and Bangime
Languages Project



(CC) BY © Jeff Heath and the Dogon and Bangime
Languages Project



(CC) BY © Jeff Heath and the Dogon and Bangime
Languages Project

Ludwigia hyssopifolia (G. Don) Exell .

- **nī: ðrð-bðnnð** . "herb sp.". Lit. "water's Corchorus".
- **sáwrèy** . "herb sp.".



(CC) BY © Jeff Heath and the Dogon and Bangime
Languages Project



(CC) BY © Jeff Heath and the Dogon and Bangime
Languages Project



(CC) BY © Jeff Heath and the Dogon and Bangime
Languages Project

Order: Nymphaeales

Family: Nymphaeaceae

Nymphaea .

- **kùrⁿú** . "water lily (all spp.)".



(CC) BY-NC-SA © Mary Keim



(CC) BY-NC-SA © Research Institute Senckenberg



(CC) BY-NC © Bart Wursten

[Nymphaea lotus](#) L. .

- **kùrⁿù ná:** . "water lily sp."



(CC) BY © Jeff Heath and the Dogon and Bangime

Languages Project



(CC) BY © Jeff Heath and the Dogon and Bangime

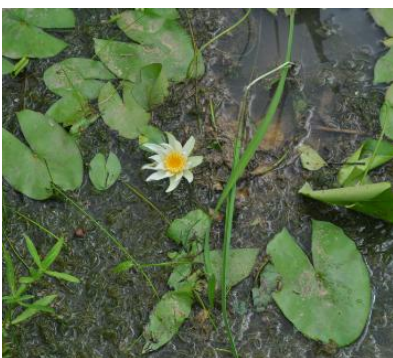
Languages Project



(CC) BY-NC-SA © Research Institute Senckenberg

[Nymphaea micrantha](#) Guill. & Perr. .

- **kùrⁿù-éley** . "water lily sp. (small tuft on leaf, 4 sepals, first-year of growth, small but tasty rhizome)". Lit. "water.lily-peanut".
- **kùrⁿù-yágùm** . "water lily sp. (tuft on leaf above petiole, leaf margin entire, leaf oval, 4 sepals, large rhizome)". Lit. "water.lily-...".



(CC) BY © Jeff Heath and the Dogon and Bangime

Languages Project



(CC) BY © Jeff Heath and the Dogon and Bangime

Languages Project



(CC) BY © Jeff Heath and the Dogon and Bangime

Languages Project

Order: Rosales

Family: Moraceae

[*Ficus sycomorus*](#) .

- gǎ:yⁿ . "fig tree sp."



(CC) BY © Jeff Heath and the Dogon and Bangime
Languages Project



(CC) BY © Jeff Heath and the Dogon and Bangime
Languages Project



(CC) BY © Jeff Heath and the Dogon and Bangime
Languages Project

Family: Rhamnaceae

[*Ziziphus mauritiana*](#) Lam. .

- èrèmbú . "jujube (shrub)".



(CC) BY-SA ©



(CC) BY © Jeff Heath and the Dogon and Bangime
Languages Project



(CC) BY-NC © Bart Wursten

Order: Santalales

Family: Ximeniaceae

[*Ximenia americana*](#) L. .

- ò:rⁿò-bàní: . "thorny shrub sp."



(CC) BY-NC-SA © Research Institute Senckenberg



(CC) BY © Jeff Heath and the Dogon and Bangime Languages Project



(CC) BY © Jeff Heath and the Dogon and Bangime Languages Project

Order: Sapindales

Family: Anacardiaceae

[Anacardium occidentale](#) L. .

- **sôm** . "cashew tree (planted)".



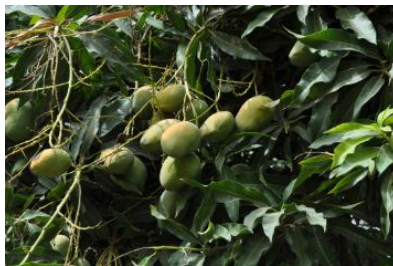
(CC) BY © Jeff Heath and the Dogon and Bangime Languages Project

[Mangifera indica](#) L. .

- **màngórò** . "mango".



(CC) BY-NC-SA © Research Institute Senckenberg



(CC) BY © Jeff Heath and the Dogon and Bangime Languages Project



(CC) BY-SA ©

[Sclerocarya birrea](#) .

- **bĩ:ⁿ** . "tree sp.".



(CC) BY © Jeff Heath and the Dogon and Bangime
Languages Project



(CC) BY-NC-SA © Research Institute Senckenberg



(CC) BY © Jeff Heath and the Dogon and Bangime
Languages Project

Spondias mombin Jacq. .

- í-ǰěw^ɾr^ɾɛ̃ . "tree sp."



(CC) BY © Jeff Heath and the Dogon and Bangime
Languages Project



(CC) BY-NC-SA © Research Institute Senckenberg



(CC) BY © Jeff Heath and the Dogon and Bangime
Languages Project

Family: Meliaceae

Azadirachta indica A. Juss. .

- gònjĩ . "neem tree".



(CC) BY © Jeff Heath and the Dogon and Bangime
Languages Project



(CC) BY © Jeff Heath and the Dogon and Bangime
Languages Project

Khaya senegalensis (Desv.) A. Juss. .

- pèrěy . "tree sp."



(CC) BY © Jeff Heath and the Dogon and Bangime
Languages Project



(CC) BY-NC-SA © Research Institute Senckenberg



(CC) BY © Jeff Heath and the Dogon and Bangime
Languages Project

Family: Rutaceae

Citrus limon (L.) Burm. f. .

- lèmùrù pàrùm . "lemon". Lit. "citrus sour".



(CC) PUBLICDOMAIN © Pavel Buršík



(CC) BY-SA ©



(CC) BY-SA ©

[Citrus sinensis](#) L. .

- **lèmùrù érùm** . "orange". Lit. "citrus sweet".



(CC) BY-SA © Mifa



(CC) BY © Jeff Heath and the Dogon and Bangime

Languages Project



(CC) BY © Jeff Heath and the Dogon and Bangime

Languages Project

[Vepris heterophylla](#) (Engl.) Letouzey .

- **pèlù-kògó** . "kinkeliba shrub".



(CC) BY-NC © Philippe Birnbaum



(CC) BY-NC © Philippe Birnbaum



(CC) BY-NC © Philippe Birnbaum

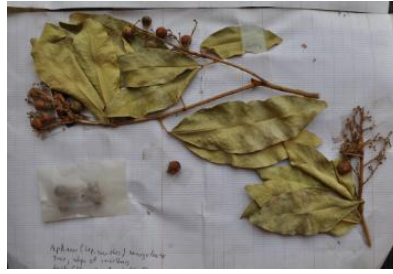
Family: Sapindaceae

[Lepisanthes senegalensis](#) (Poir.) Leenhouts .

- **dè:lé** . "tree sp. ".



(CC) BY © Jeff Heath and the Dogon and Bangime
Languages Project



(CC) BY © Jeff Heath and the Dogon and Bangime
Languages Project



(CC) BY © Jeff Heath and the Dogon and Bangime
Languages Project

Order: Solanales

Family: Convolvulaceae

Evolvulus alsinoides (L.) L. . Characteristics: herb with perennial rootstock; up to 20 cm tall; slender, hairy leaves; blue flowers with fused petals. Biotope: sandy soil. ([Burke 2007](#): 84)

- **pé:-pé:** . "herb sp."
- **ùsùbòr"ò-sàwâ:** . "herb sp."



(CC) BY-NC-SA © Research Institute Senckenberg



(CC) BY © India Biodiversity Portal



(CC) BY © Jeff Heath and the Dogon and Bangime
Languages Project

Ipomoea A. Agassiz & H.L. Clark, 1907 .

- **ólóró** . "training vine sp."



(CC) BY-SA ©

[Ipomoea aquatica](#) Forsskal .

- **ṗèrè-óròy** . "trailing vine sp.". Lit. "sheep-placenta".



(CC) BY © Jeff Heath and the Dogon and Bangime
Languages Project



(CC) BY © Jeff Heath and the Dogon and Bangime
Languages Project



(CC) BY © Jeff Heath and the Dogon and Bangime
Languages Project

[Ipomoea asarifolia](#) (Desr.) Roem. & Schult. .

- **èlèy-wâ:** . "trailing vine sp.".



(CC) BY © Jeff Heath and the Dogon and Bangime
Languages Project



(CC) BY-NC-SA © Research Institute Senckenberg



(CC) BY © Jeff Heath and the Dogon and Bangime
Languages Project

[Jacquemontia tannifolia](#) (L.) Griseb. .

- **ṗèrè-óròy** . "sprawling herb sp.".
- **ólóró** . "sprawling herb sp.".



(CC) BY © Jeff Heath and the Dogon and Bangime Languages Project



(CC) BY © Jeff Heath and the Dogon and Bangime Languages Project

Family: Solanaceae

Physalis angulata L. .

- bàlèy-céwré . "herb sp."



(CC) BY © Jeff Heath and the Dogon and Bangime Languages Project



Public Domain by flaksbaum



(CC) BY-SA © W.A. Djatmiko

Solanum incanum L. . Characteristics: shrub, 80cm tall, many branches that are covered with hairs and spines, large lobed leaves, purplish-white flowers, fruit turns from green to yellow when ripe. Biotope: dry river course. ([Van Rooyen et al. 2001](#): 76)

- [ɛrⁿé jìrè] púsúró . "thorny bush sp.". Lit. "goat eye ...".



(CC) BY © Jeff Heath and the Dogon and Bangime Languages Project



(CC) BY-NC © Bart Wursten



(CC) BY © Jeff Heath and the Dogon and Bangime Languages Project

Family: Sphenocleaceae

[Sphenoclea zeylanica](#) Gaertn. .

- bàrà-pèđĩngè ár"à . "herb sp."
- [bèr-bèrè] -sămnà . "herb sp." Lit. "goatherd-soap".
- gâlâ-sàwà: ár"à . "herb sp."



(CC) BY © Jeff Heath and the Dogon and Bangime Languages Project



(CC) BY-SA ©



Public Domain by

Order: Vahliales

Family: Vahliaceae

[Vahlia oldenlandioides](#) (Murray) Kuntze .

- nòŋòr"ó . "herb sp."



(CC) BY © Jeff Heath and the Dogon and Bangime Languages Project



(CC) BY-NC-SA © Missouri BG!



(CC) BY-NC-SA © Missouri BG!

Order: Vitales

Family: Vitaceae

[Cissus quadrangularis](#) L. .

- wà:rùm-wǎ: . "liana sp."



(CC) BY-SA © Marco Schmidt



(CC) BY © Jeff Heath and the Dogon and Bangime
Languages Project



(CC) BY © Jeff Heath and the Dogon and Bangime
Languages Project

Order: Zygophyllales

Family: Zygophyllaceae

[Balanites aegyptiacus](#) .

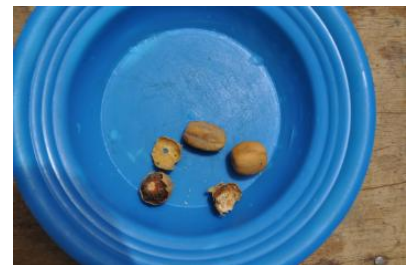
- m̀:rn̄: . "wild date tree"



(CC) BY © Jeff Heath and the Dogon and Bangime
Languages Project



(CC) BY © Jeff Heath and the Dogon and Bangime
Languages Project



(CC) BY © Jeff Heath and the Dogon and Bangime
Languages Project

[Tribulus terrestris](#) L. . Characteristics: creeping growth, yellow flowers, flower 1 cm in diameter, soft-haired leaves, woody, sharp, spiny fruits that can puncture animals' hoofs, bare feet and bicycle tyres. ([Van der Walt and le Riche 1999](#): 109)

- [ʃi-jàm] -dòró . "herb sp."



(CC) BY © Jeff Heath and the Dogon and Bangime Languages Project



(CC) BY-SA © Stan Shebs



(CC) BY-SA © Stan Shebs

Class: Polypodiopsida

Order: Salviniiales

Family: Marsileaceae

[Marsilea minuta](#) .

- èkùnjù- [èlèy-wá:] . "fern sp."



(CC) PUBLICDOMAIN © Michael Kesi



(CC) BY-NC-SA © Research Institute Senckenberg



(CC) BY-NC © Bart Wursten

Class: other

Order: Ranunculales

Family: Menispermaceae

[Tinospora bakis](#) (A.Rich.) Miers .

- gùrⁿḡ . "woody liana sp."



(CC) BY © Jeff Heath and the Dogon and Bangime
Languages Project



(CC) BY © Jeff Heath and the Dogon and Bangime
Languages Project



(CC) BY © Jeff Heath and the Dogon and Bangime
Languages Project

Kingdom: Viridiplantae

Phylum: Streptophyta

Class: Magnoliopsida

Order: Brassicales

Family: Capparaceae

[Boscia angustifolia](#) A. Rich. .

- tí-táwrù . "tree sp."



(CC) BY © Jeff Heath and the Dogon and Bangime
Languages Project



(CC) BY © Jeff Heath and the Dogon and Bangime
Languages Project



(CC) BY © Jeff Heath and the Dogon and Bangime
Languages Project

[Boscia salicifolia](#) Oliv. .

- tí-táwrù . "tree sp."



(CC) BY © Jeff Heath and the Dogon and Bangime Languages Project



(CC) BY © Jeff Heath and the Dogon and Bangime Languages Project



(CC) BY © Jeff Heath and the Dogon and Bangime Languages Project

[Maerua angolensis](#) .

- **bǐyà:-ná:** . "tree sp."



(CC) BY-NC © Bart Wursten



(CC) BY-NC © Bart Wursten



(CC) BY © Jeff Heath and the Dogon and Bangime Languages Project

Family: Salvadoraceae

[Salvadora persica](#) L. .

- **wúrò:** . "shrub sp."



(CC) BY © Jeff Heath and the Dogon and Bangime Languages Project



(CC) BY © Jeff Heath and the Dogon and Bangime Languages Project



(CC) BY-NC © Bart Wursten

Order: Caryophyllales

Family: Aizoaceae

[*Zaleya pentandra*](#) (L.) C. Jeffrey .

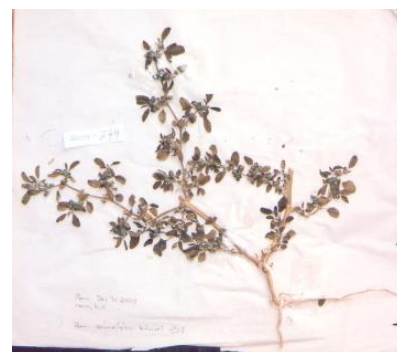
- kùntàwrá sáwà: . "herb sp."



(CC) BY-NC © Bart Wursten



(CC) BY-NC © Bart Wursten



(CC) BY © Jeff Heath and the Dogon and Bangime Languages Project

Family: Amaranthaceae

[*Pandiaka angustifolia*](#) (Vahl) Hepper .

- [nǎ:-jirè] -kó:sú . "herb sp."



(CC) BY © Jeff Heath and the Dogon and Bangime
Languages Project



(CC) BY © Jeff Heath and the Dogon and Bangime
Languages Project



(CC) BY © Jeff Heath and the Dogon and Bangime
Languages Project

Pupalia lappacea (L.) Juss. . Characteristics: erect or sprawling herb; up to 90 cm tall; stems with multiple opposite branches that grow from nodes; branches are 4-angled; the mature inflorescence is up to 50 cm long and has green flowers; fruit is a capsule with shiny brown seeds. Biotope: sandy soil. ([Van Rooyen et al. 2001](#): 156)

- **dòŋ-gòm-dò:rú** . "herb sp."



(CC) BY-NC © Bart Wursten



(CC) BY-NC © Bart Wursten



Public Domain by Christfried Naumann

Order: Celastrales

Family: Celastraceae

Gymnosoria senegalensis .

- **gíyàl-gó:têl** . "tree sp. with long thorns". From Ful "thorn-one" .



(CC) BY © Jeff Heath and the Dogon and Bangime
Languages Project



(CC) BY-NC-SA © Research Institute Senckenberg



(CC) BY © Jeff Heath and the Dogon and Bangime
Languages Project

Order: Cucurbitales

Family: Cucurbitaceae

Cucumis prophetarum prophetarum .

- èkùnjù-kànr"ày" . "inedible wild melon sp.". Lit. "frog-melon".
- kànr"ày" gárù-m . "inedible wild melon sp.". Lit. "melon bitter".



(CC) BY © Jeff Heath and the Dogon and Bangime
Languages Project



(CC) BY © Jeff Heath and the Dogon and Bangime
Languages Project



(CC) BY © Jeff Heath and the Dogon and Bangime
Languages Project

Cucumis pustulatus Hook. f. .

- èkùnjù-kànr"ày" . "horned melon". Lit. "frog-melon".
- kànr"ày" gárù-m . "horned melon". Lit. "melon bitter".



(CC) BY © Jeff Heath and the Dogon and Bangime
Languages Project



(CC) BY © Jeff Heath and the Dogon and Bangime
Languages Project



(CC) BY © Jeff Heath and the Dogon and Bangime
Languages Project

Order: Fabales

Family: Fabaceae

[Vachellia amythetophylla](#) .

- wòró bòlòrò . "thorny tree sp."



(CC) BY © Jeff Heath and the Dogon and Bangime
Languages Project



(CC) BY © Jeff Heath and the Dogon and Bangime
Languages Project



(CC) BY © Jeff Heath and the Dogon and Bangime
Languages Project

Family: Polygalaceae

[Securidaca longepedunculata](#) .

- tərô : "tree sp."



(CC) BY © Jeff Heath and the Dogon and Bangime Languages Project



(CC) BY © Jeff Heath and the Dogon and Bangime Languages Project



(CC) BY © Jeff Heath and the Dogon and Bangime Languages Project

Order: Gentianales

Family: Apocynaceae

[Caralluma adscendens](#) (Roxb.) Haw. .

- [gù-gùsù] -dúrò . "succulent plant sp.". Lit. "rat-tail".



(CC) BY © Jeff Heath and the Dogon and Bangime Languages Project



(CC) BY © Jeff Heath and the Dogon and Bangime Languages Project



(CC) BY © Jeff Heath and the Dogon and Bangime Languages Project

[Glossonema boveanum](#) .

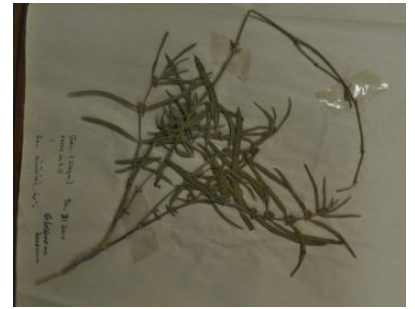
- kàmàkòrò ár"à . "herb sp.".



(CC) BY © Jeff Heath and the Dogon and Bangime
Languages Project



(CC) BY © Jeff Heath and the Dogon and Bangime
Languages Project



(CC) BY © Jeff Heath and the Dogon and Bangime
Languages Project

[Leptadenia hastata](#) .

- **kàmàkòrɔ́** . "vine sp."



(CC) BY-NC-SA © Research Institute Senckenberg



(CC) BY © Jeff Heath and the Dogon and Bangime
Languages Project



(CC) BY © Jeff Heath and the Dogon and Bangime
Languages Project

[Leptadenia pyrotechnica](#) (Forssk.) Decne. .

- **cèpèl-sògó** . "bush sp."



(CC) BY © Jeff Heath and the Dogon and Bangime Languages Project



(CC) BY-NC-SA © Bibliotheca Alexandrina - EOL Ar



(CC) BY-SA ©

[Pergularia tomentosa](#) L. .

- **póruyöm** . "bush sp."



(CC) BY © Jeff Heath and the Dogon and Bangime Languages Project



(CC) BY © Jeff Heath and the Dogon and Bangime Languages Project



(CC) BY © Jeff Heath and the Dogon and Bangime Languages Project

[Xysmalobium heudelotianum](#) N. E. Br. .

- **jòlòm-jórù** . "trailing vine sp."



(CC) BY-NC © Rob Burrett



(CC) BY-NC © Rob Burrett



(CC) BY © Jeff Heath and the Dogon and Bangime Languages Project

Order: Lamiales

Family: Acanthaceae

[Peristrophe paniculata](#) (Forssk.) I.Darbysh. .

- yàyò:-jimbê: . "herb sp."



(CC) BY ©



(CC) BY ©



(CC) BY © Jeff Heath and the Dogon and Bangime
Languages Project

Family: Bignoniaceae

[Stereospermum kunthianum](#) Cham. .

- bàrá-pǒ:lò . "tree sp."



(CC) BY-NC © Bart Wursten



(CC) BY-NC © Bart Wursten



(CC) BY © Jeff Heath and the Dogon and Bangime
Languages Project

Family: Lamiaceae

[Vitex doniana](#) Sweet .

- àrmùr^ᵐᵑ . "tree sp."



(CC) BY © Jeff Heath and the Dogon and Bangime
Languages Project



(CC) BY-NC-SA © Research Institute Senckenberg



(CC) BY © Jeff Heath and the Dogon and Bangime
Languages Project

Family: Pedaliaceae

[Rogeria adenophylla](#) .

- ñnjè-kû: . "tall herb sp.". Lit. "dog-head".



(CC) BY © Jeff Heath and the Dogon and Bangime
Languages Project



(CC) BY © Jeff Heath and the Dogon and Bangime
Languages Project



(CC) BY © Jeff Heath and the Dogon and Bangime
Languages Project

Order: Malpighiales

Family: Elatinaceae

[Bergia suffruticosa](#) (Del.) Fenzl .

- gúrò sàwà: . "herb sp."
- sàriyă sáwà: . "herb sp."



(CC) BY © Jeff Heath and the Dogon and Bangime
Languages Project



(CC) BY © Jeff Heath and the Dogon and Bangime
Languages Project



(CC) BY © Jeff Heath and the Dogon and Bangime
Languages Project

Family: Euphorbiaceae

[Dalechampia parvifolia](#) (Hochst. ex Webb) Müll.Arg. .

- [tî-tâ-m nàr"à] sáwà: . "crawling herb sp.". Lit. "hyena's mother's grass".



(CC) BY © Jeff Heath and the Dogon and Bangime
Languages Project



(CC) BY © Jeff Heath and the Dogon and Bangime
Languages Project



(CC) BY © Jeff Heath and the Dogon and Bangime
Languages Project

Order: Malvales

Family: Malvaceae

[Abutilon glaucum](#) (Forst. f.) Schltld. .

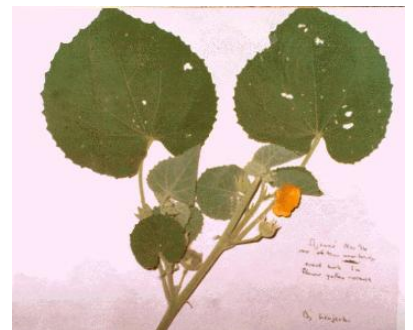
- ár-kùrô-m\\ár-kùrô: . "bush sp.".



(CC) BY © Jeff Heath and the Dogon and Bangime
Languages Project



(CC) BY © Jeff Heath and the Dogon and Bangime
Languages Project



(CC) BY © Jeff Heath and the Dogon and Bangime
Languages Project

Grewia bicolor Juss. .

- òsòy-ná: . "shrub sp."



(CC) BY © Jeff Heath and the Dogon and Bangime Languages Project



(CC) BY © Jeff Heath and the Dogon and Bangime Languages Project



(CC) BY © Jeff Heath and the Dogon and Bangime Languages Project

Sida cerradoensis Krapov. .

- sèkùrù-gùló . "bush sp."
- [yàgùm-yà:] -gùló . "bush sp."



(CC) BY © Jeff Heath and the Dogon and Bangime Languages Project



(CC) BY © Jeff Heath and the Dogon and Bangime Languages Project



(CC) BY © Jeff Heath and the Dogon and Bangime Languages Project

Order: Myrtales

Family: Combretaceae

Anogeissus leiocarpa (DC.) Guill. & Perr. .

- wàrⁿú . "tree sp."



(CC) BY © Jeff Heath and the Dogon and Bangime Languages Project



(CC) BY © Jeff Heath and the Dogon and Bangime Languages Project



(CC) BY © Jeff Heath and the Dogon and Bangime Languages Project

[Combretum glutinosum](#) Perr. ex DC. .

- àsàgùsô: . "tree sp.". From Songhay .



(CC) BY © Jeff Heath and the Dogon and Bangime Languages Project



(CC) BY © Jeff Heath and the Dogon and Bangime Languages Project



(CC) BY © Jeff Heath and the Dogon and Bangime Languages Project

[Combretum micranthum](#) G. Don .

- jëy" . "shrub sp.".



(CC) BY © Jeff Heath and the Dogon and Bangime Languages Project



(CC) BY © Jeff Heath and the Dogon and Bangime Languages Project



(CC) BY © Jeff Heath and the Dogon and Bangime Languages Project

[*Guiera senegalensis*](#) J.F.Gmel. .

- gùrù-pírú . "shrub sp.".



(CC) BY © Jeff Heath and the Dogon and Bangime
Languages Project



(CC) BY © Jeff Heath and the Dogon and Bangime
Languages Project



(CC) BY © Jeff Heath and the Dogon and Bangime
Languages Project

Order: Piperales

Family: Aristolochiaceae

[*Aristolochia albida*](#) Duch. .

- náy-bírⁿù . "woody liana sp.".



(CC) BY © Jeff Heath and the Dogon and Bangime
Languages Project



(CC) BY © Jeff Heath and the Dogon and Bangime
Languages Project

Order: Rosales

Family: Moraceae

[*Ficus abutilifolia*](#) (Miq.) Miq. .

- kùmbú-jö:rò . "fig tree sp.".



(CC) BY © Jeff Heath and the Dogon and Bangime
Languages Project



(CC) BY © Jeff Heath and the Dogon and Bangime
Languages Project



(CC) BY-NC © Bart Wursten

[Ficus dicranostyla](#) Milabr. .

- **kórò** . "fig tree sp."



(CC) BY © Jeff Heath and the Dogon and Bangime
Languages Project



(CC) BY © Jeff Heath and the Dogon and Bangime
Languages Project



(CC) BY © Jeff Heath and the Dogon and Bangime
Languages Project

[Ficus platyphylla](#) Del. .

- **kùmbi:-ná:** . "fig tree sp."



(CC) BY © Jeff Heath and the Dogon and Bangime
Languages Project



(CC) BY © Jeff Heath and the Dogon and Bangime
Languages Project



(CC) BY © Jeff Heath and the Dogon and Bangime
Languages Project

Ficus sur Forssk. .

- gà:yⁿ-kǒ:lǒy . "fig tree sp."



(CC) BY © Jeff Heath and the Dogon and Bangime
Languages Project



(CC) BY © Jeff Heath and the Dogon and Bangime
Languages Project



(CC) BY © Jeff Heath and the Dogon and Bangime
Languages Project

Family: Rhamnaceae

Ziziphus mucronata . Characteristics: 2 - 5 m tall, yellowish-green flowers, greyish-brown bark, thorns in pairs.

Biotope: river course, arid area. ([Carruthers \(eds.\) 2000](#): 263; [Van Rooyen et al. 2001](#): 34)

- [tǐ-tà:] -èrèmbú . "shrub sp. (false jujube)". Lit. "hyena-jujube".



Public Domain by Christfried Naumann



(CC) BY-NC-SA © Research Institute Senckenberg



Public Domain by Gertrud Boden

Order: Sapindales

Family: Burseraceae

[Commiphora africana](#) (Rich.) Engl. .

- ùlúm-dúrù . "bdellium (shrub)".
- dó:rú-kǎ: . "bdellium (shrub, variety)".



(CC) BY © Jeff Heath and the Dogon and Bangime
Languages Project



(CC) BY © Jeff Heath and the Dogon and Bangime
Languages Project



(CC) BY © Jeff Heath and the Dogon and Bangime
Languages Project

Order: Solanales

Family: Solanaceae

[Physalis lagascae](#) R. & S. .

- yàrù-úrò . "herb sp.".



(CC) BY © Jeff Heath and the Dogon and Bangime Languages Project



(CC) BY © Jeff Heath and the Dogon and Bangime Languages Project



(CC) BY © Jeff Heath and the Dogon and Bangime Languages Project

Order: Vitales

Family: Vitaceae

[Ampelocissus africana](#) (Lour.) Merrill .

- [bèr-bèrè]-kùrô: . "liana sp.". Lit. "goatherd's wild.grape".



(CC) BY © Jeff Heath and the Dogon and Bangime Languages Project



(CC) BY © Jeff Heath and the Dogon and Bangime Languages Project



(CC) BY © Jeff Heath and the Dogon and Bangime Languages Project

Class: other

Order: Fabales

Family: Fabaceae

[Senegalia ataxacantha](#) .

- wòrò pílé . "scrub acacia sp. (often liana)". Lit. "scrub.acacia white".



(CC) BY © Jeff Heath and the Dogon and Bangime
Languages Project



(CC) BY © Jeff Heath and the Dogon and Bangime
Languages Project



(CC) BY © Jeff Heath and the Dogon and Bangime
Languages Project

[Senegalia laeta](#) .

- **kór-kòsórò** . "acacia sp."



(CC) BY © Jeff Heath and the Dogon and Bangime
Languages Project



(CC) BY © Jeff Heath and the Dogon and Bangime
Languages Project



(CC) BY © Jeff Heath and the Dogon and Bangime
Languages Project

[Senegalia macrostachya](#) .

- **wòrò jéw"é-w** . "acacia sp.". Lit. "scrub.acacia black".



(CC) BY © Jeff Heath and the Dogon and Bangime
Languages Project



(CC) BY © Jeff Heath and the Dogon and Bangime
Languages Project



(CC) BY © Jeff Heath and the Dogon and Bangime
Languages Project

Kingdom: other

Phylum: other

Class: other

Order: other

Family: other

[Trachyderma hispida](#) .

- **cĩ-cè: kógóró-m\kógóró** . "darkling beetle sp. in houses". Lit. "beetle remove.bark".



(CC) BY © Jeff Heath and the Dogon and Bangime
Languages Project