

Tommo So names for Plants and Animals

edited by Jeffrey Heath and Steven Moran

This document was created from [Tsammalex](http://tsammalex.clld.org) on 2015-05-13.

Tsammalex is published under a Creative Commons Attribution 4.0 International License and should be cited as

*Christfried Naumann & Steven Moran & Guillaume Segerer & Robert Forkel (eds.)
2015. Tsammalex: A lexical database on plants and animals. Leipzig: Max Planck
Institute for Evolutionary Anthropology. (Available online at
<http://tsammalex.clld.org>, Accessed on 2015-05-13.)*

A full list of contributors is available at <http://tsammalex.clld.org/contributors>

The list of references cited in this document is available at
<http://tsammalex.clld.org/sources>

Kingdom: Animalia

Phylum: Arthropoda

Class: Arachnida

Order: Ixodida

Family: Ixodidae

[*Hyalomma impeltatum*](#) Schulze & Schlottke, 1930 .

- léllèl . "large tick sp."

[*Rhipicephalus turanicus*](#) Pomerantsev, 1936 .

- kíbìdù . "small tick sp."

Order: Prostigmata

Family: Leeuwenhoekiidae

[*Dinothrombium tinctorium*](#) .

- àná nà . "small scarlet-red velvet mite that emerges in fields after rains". Lit. "rain's mother".



(CC) BY © Jeff Heath and the Dogon and Bangime
Languages Project



(CC) BY © Jeff Heath and the Dogon and Bangime
Languages Project

Order: Solifugae

Family: Galeodidae

[*Galeodes olivieri*](#) Simon, 1879 .

- jígú-màà-jígú ~ jígí-màà-jígí . "wind scorpion, sun scorpion".



(CC) BY © Jeff Heath and the Dogon and Bangime Languages Project



(CC) BY © Jeff Heath and the Dogon and Bangime Languages Project



(CC) BY © Jeff Heath and the Dogon and Bangime Languages Project

Class: Chilopoda

Order: Scolopendromorpha

Family: Scolopendridae

[Scolopendra](#) .

- kàdàlmà-sèèniyà ~ kàdàràrà sèènié . "large biting centipede (scolopender)".



(CC) BY © Sam Fraser-Smith



(CC) BY-SA © Matt Reinbold



(CC) BY © Jeff Heath and the Dogon and Bangime Languages Project

Class: Diplopoda

Order: Spirostreptida

Family: Spirostreptidae

[Archispirostreptus](#) .

- èndè-kùmó ~ -kùmó . "giant millipede".

Gyps rueppellii (A. E. Brehm, 1852) . Characteristics: carnivore; body-length: 115 cm, brown plumage; wings with dark flight feathers and pale linings. ([Sinclair 1994](#): 70)

- **dùbó** . "Rueppell's griffon vulture".
- **tèbù-dùbó** . "Rueppell's griffon vulture".
- **dùbò òiyé** . "Rueppell's griffon vulture".



PD ©



(CC) BY-NC-SA © Gerald and Buff Corsi



PD ©

Micronisus gabar (Daudin, 1800) . Characteristics: carnivore; body-length: 30-34 cm; grey throat and breast; reddish legs and cere; grey wings. Biotope: woodland. ([Sinclair 1994](#): 86)

- [. "gabar goshawk".



(CC) BY © Neil Strickland



PD US ©



(CC) BY ©

Milvus migrans (Boddaert, 1783) . Characteristics: carnivore; body-length: 56 cm; long forked tail; dark plumage. ([Sinclair 1994](#): 88)

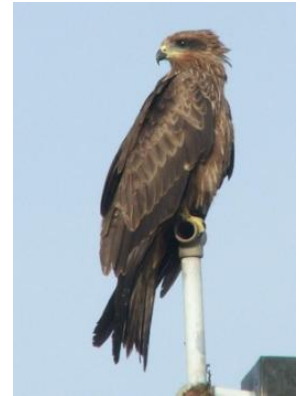
- **jèmbè-kómmò** . "kite (hawk)".
- **tè-tèbú** . "kite (hawk)".



(CC) BY-SA © Thomas Kraft



(CC) BY-NC © inaturalist



(CC) BY-SA ©

Necrosyrtes monachus (Temminck, 1823) . Characteristics: carnivore; body-length: 70 cm; brown plumage; bare head with red skin. ([Sinclair 1994](#): 72)

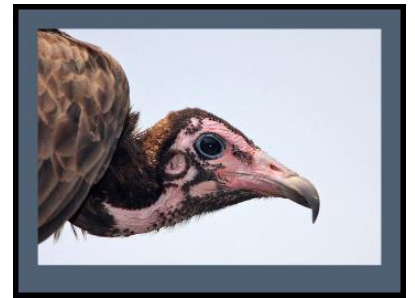
- **dùbò gààlèy** . "hooded vulture".



(CC) BY-SA © Atamari



(CC) BY-NC © Scott Bowers



(CC) BY-NC-SA © Steve Garvie

Order: Apodiformes

Family: Apodidae

Apus affinis (J. E. Gray, 1830) .

- **wèlè-wélé** . "little African swift".



(CC) MARK © creator:Thomas Hardwicke

Order: Bucerotiformes

Family: Bucerotidae

[Tockus erythrorhynchus](#) (Temminck, 1823) .

- dòòbú . "red-billed hornbill".



(CC) BY-NC © ellisms



(CC) BY-SA © Mehmet Karatay



(CC) BY © Biodiversity Heritage Library

Family: Bucorvidae

[Bucorvus abyssinicus](#) (Boddaert, 1783) .

- gǐlé . "Abyssinian ground hornbill".
- gǐlè gém . "Abyssinian ground hornbill".



(CC) BY © Jeff Heath and the Dogon and Bangime Languages Project

Order: Charadriiformes

Family: Burhinidae

[Burhinus capensis](#) (Lichtenstein, 1823) .

- wòbù-wóbú . "spotted thick-knee".



(CC) BY-SA © Jutta ? unknown



(CC) BY-SA © Cburnett?



(CC) BY © Jeff Heath and the Dogon and Bangime Languages Project

Family: Charadriidae

[Vanellus tectus](#) (Boddaert, 1783) .

- ðàrò-mò-jónḡè . "black-headed lapwing (plover)".



(CC) BY-NC-SA © Bernard DUPONT



(CC) MARK © ChriKo



(CC) BY © Noel Reynolds

Family: Glareolidae

[Rhinoptilus chalcopterus](#) (Temminck, 1824) .

- kèlḗḡ-kèlḗm . "bronze-winged courser".



Public Domain by Nicolas Huet



(CC) BY-NC-SA © Bart Wursten

Family: Jacanidae

[*Actophilornis africanus*](#) (Gmelin, 1789) . Characteristics: carnivore; body-length: 28 cm; red-brown body; white throat; yellow breast; black neck; blue bill and forehead. Biotope: flooded grassland, freshwater. ([Sinclair 1994](#): 102)

- **đĩi sàdà-ỳ** . "jacana". Lit. "water's bird-Dimin".



(CC) BY ©



(CC) BY-SA ©

Order: Ciconiiformes

Family: Ciconiidae

[*Ciconia abdimii*](#) Lichtenstein, 1823 . Characteristics: carnivore; body-length: 76 cm; black plumage; white lower back and rump; greenish bill and legs;. ([Sinclair 1994](#): 58)

- **máánjéy** . "Abdim's stork".



Public Domain by Taa DoBeS team
(Boden/Güldemann/Naumann)



Public Domain by Taa DoBeS team
(Boden/Güldemann/Naumann)



Public Domain by Taa DoBeS team
(Boden/Güldemann/Naumann)

[*Leptoptilos crumeniferus*](#) (Lesson, 1831) . Characteristics: carnivore; body-length: 150 cm; white body, black wings; naked head and neck; large, pointy bill; whitish legs. ([Sinclair 1994](#): 58)

- **sàdàà ílímè** ~ **sàdàà ílmèlù** . "marabou stork".



(CC) BY-SA © Ltshears



(CC) BY-SA © unknown (User:Cacophony)

Order: Columbiformes

Family: Columbidae

[*Columba guinea*](#) Linnaeus, 1758 .

- **gùrùmbàà-gádà** . "speckled pigeon".
- **"pigeon-..."** . "speckled pigeon".



(CC) BY-SA © unknown (Ltshears)



(CC) BY-SA © unknown (ChriKo)

Columba livia Gmelin, 1789 .

- **gùrùmbàà gém** . "rock pigeon, rock dove".
- **gùrùmbáá** . "pigeon (domestic)".



(CC) BY-SA © Mike Pennington



(CC) BY-SA © J.M.Garg

Oena capensis (Linnaeus, 1766) .

- **sèrè-bénnú** . "long-tailed pigeon, namaqua dove". Lit. "...-Mundulea.tree".



(CC) BY-SA © Lip Kee from Singapore, Republic of Singapore



(CC) BY-NC-SA © David Blank



http://en.wikipedia.org/wiki/public_domain © C. G. Finch-Davies (1875-1920)

[Streptopelia senegalensis](#) (Linnaeus, 1766) .

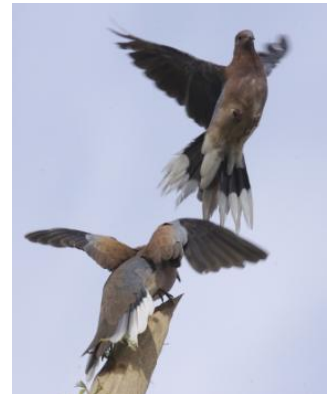
- **pèrè-péré ~ pèrè-géré** . "laughing dove".



(CC) BY-SA ©



(CC) BY-SA © Lip Kee



(CC) BY-SA ©

[Streptopelia vinacea](#) (Gmelin, 1789) .

- **gùrùmbàà sá bú-gêm** . "doves with black nape rings (vinaceous dove; mourning dove)". Lit. "pigeon amulet-black".
- **gùrùmbàà òdó-gêm** . "doves with black nape rings (vinaceous dove; mourning dove)". Lit. "pigeon neck-black".



(CC) BY ©

[Treron waalia](#) (F. A. A. Meyer, 1793) .

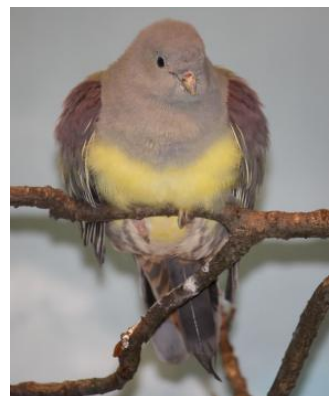
- **pèrè-pèrè kóyyò** . "Bruce's green pigeon (yellow-bellied fruit pigeon)".



(CC) MARK © creator:Louis Agassiz Fuertes



(CC) BY-SA ©



(CC) BY-SA © Ltshears

Order: Coraciiformes

Family: Alcedinidae

[Halcyon senegalensis](#) (Linnaeus, 1766) .

- **bònnó sàdàà** . "woodland kingfisher". Lit. "pounding.area's bird".



(CC) BY-SA ©



(CC) BY-SA © User:Justin.Tweedie



Public Domain by

Family: Coraciidae

[Coracias abyssinicus](#) Hermann, 1783 .

- **òrò-kòó-kòò** . "Abyssinian roller".
- **sàdàà dúlò-pàlà** . "Abyssinian roller".



PD ©



(CC) BY-SA ©

Family: Meropidae

[Merops albicollis](#) Vieillot, 1817 .

- **sàdàà-[òrò-pùnó] ~ -[òrò-pùnè-ý"** . "white-throated bee-eater".



(CC) BY © Ron Knight from Seaford, East Sussex, United Kingdom



(CC) BY-SA ©



(CC) BY © Gerhard Singer

Order: Cuculiformes

Family: Cuculidae

[*Centropus senegalensis*](#) (Linnaeus, 1766) .

- bàrá- [dù:-dù:] . "Senegal coucal".



(CC) BY © ThomHasi



(CC) BY © Jeff Heath and the Dogon and Bangime

Languages Project

Order: Galliformes

Family: Numididae

[*Numida meleagris*](#) (Linnaeus, 1758) . Characteristics: omnivore; body-length: 56 cm; grey plumage with white dots; blue and red skin on the head. Biotope: grassland, woodland. ([Sinclair 1994](#): 102)

- nàjàmá . "guinea-fowl".



(CC) BY-SA ©



(CC) BY © Jeff Heath and the Dogon and Bangime Languages Project



(CC) BY © Chris Eason

Family: Phasianidae

Francolinus .

- t̀g̀g̀g̀ . "francolin".



(CC) BY ©



(CC) PUBLICDOMAIN © Stolz, Gary M.



Public Domain by

Ptilopachus petrosus (Gmelin, 1789) .

- ẁng̀l̀l̀ . "stone partridge".



(CC) BY-SA ©



(CC) BY © Jeff Heath and the Dogon and Bangime Languages Project



(CC) BY © Jeff Heath and the Dogon and Bangime Languages Project

Order: Gruiformes

Family: Gruidae

[Balearica pavonina](#) (Linnaeus, 1758) .

- sèlù-kùmó ~ -kùmó . "crowned crane".
- kùṅàá . "crowned crane".



Public Domain by



(CC) BY ©

Family: Otididae

[Eupodotis senegalensis](#) (Vieillot, 1820) .

- kàràngáá . "white-bellied (= Senegal) bustard".



(CC) BY-SA © Lip Kee



(CC) BY-SA ©



(CC) MARK © Creator:Claude Gibney Finch-Davies

Order: Musophagiformes

Family: Musophagidae

[Crinifer piscator](#) (Boddaert, 1783) .

- àná sàdàà . "western grey plantain-eater". Lit. "rain's bird".



(CC) BY-SA ©



(CC) BY-SA ©



(CC) BY ©

Order: Passeriformes

Family: Cisticolidae

[*Spiloptila clamans*](#) (Cretzschmar, 1826) .

- **kàmbé sàdà-ÿ** . "cricket warbler". Lit. "zaban's bird-Dimin".



(CC) BY © Jeff Heath and the Dogon and Bangime Languages Project



(CC) BY © Jeff Heath and the Dogon and Bangime Languages Project



Public Domain by

Family: Corvidae

[*Corvus albus*](#) Statius Muller, 1776 .

- **àná kòóⁿ ~ àn-kàáⁿ** . "pied crow".
- **àná gàáⁿ-gààⁿ** . "pied crow".



(CC) BY-SA © Thomas Schoch



(CC) BY-SA © Myburgh

[Corvus ruficollis](#) Lesson, 1831 .

- ànà kòò" gém . "black crow".



(CC) MARK © G. G. White – delineator. W. H. Dougal – engraver



(CC) BY-SA © Lip Kee Yap



(CC) BY-NC © Biopix

[Ptilostomus afer](#) (Linnaeus, 1766) .

- nàá sàdàà . "piapiac (magpie)".



(CC) BY-SA ©



(CC) BY © Jeff Heath and the Dogon and Bangime Languages Project



(CC) BY-SA ©

Family: Emberizidae

[Emberiza striolata sahari](#) J. Levaillant, 1850 .

- sàdàà gòdèré . "house bunting".



(CC) BY ©



(CC) BY © Biodiversity Heritage Library



(CC) BY-NC-SA © Stefano Doglio

Family: Estrildidae

[Uraeginthus bengalus](#) (Linnaeus, 1766) .

- búlòmò . "red-cheeked cordon-bleu".



(CC) BY ©



(CC) BY-SA ©



Public Domain by

Family: Hirundinidae

[Ptyonoprogne fuligula pusilla](#) (Zedlitz, 1908) .

- òlú wèlè-wèlè . "rock martin (swallow)". Lit. "outback's swift".



(CC) BY © Jeff Heath and the Dogon and Bangime
Languages Project



(CC) BY © Jeff Heath and the Dogon and Bangime
Languages Project



(CC) BY © Jeff Heath and the Dogon and Bangime
Languages Project

Family: Muscicapidae

[Cercotrichas galactotes](#) (Temminck, 1820) .

- kòmómò sàdà-ỳ . "rufous scrub-robin".
- kèèníyé . "rufous scrub-robin".



Public Domain by



(CC) BY-NC © inaturalist

[Cercotrichas podobe](#) (Statius Muller, 1776) .

- kòmómò sàdà-ỳ . "black scrub-robin".



(CC) BY-SA ©

[Thamnolaea cinnamomeiventris](#) (Lafresnaye, 1836) .

- **nòròmó** . "cliff chat, white-crowned cliff-chat".



(CC) BY ©



(CC) BY ©



Public Domain by

Family: Passeridae

[Passer griseus](#) (Vieillot, 1817) .

- **kóròñì** . "grey-headed sparrow".



(CC) BY-SA ©



(CC) BY © Jeff Heath and the Dogon and Bangime Languages Project



(CC) BY-SA © Tom Tarrant

[Passer luteus](#) (Lichtenstein, 1823) .

- **mééjní** . "golden sparrow".
- **yúú sàdàà** . "golden sparrow".



(CC) BY-SA © Christiaan Kooyman



(CC) BY © Jeff Heath and the Dogon and Bangime Languages Project



(CC) BY-SA ©

Family: Ploceidae

[Bubalornis albirostris](#) (Vieillot, 1817) .

- **sàdàà sòḡóḡ** . "white-billed buffalo-weaver".



(CC) BY © Jeff Heath and the Dogon and Bangime Languages Project



(CC) BY © Jeff Heath and the Dogon and Bangime Languages Project

[Euplectes franciscanus](#) (Isert, 1789) .

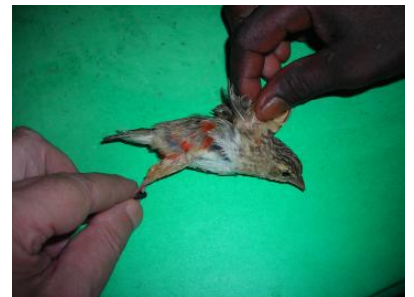
- **sàdàà àlìi-bàdàrà** . "northern red bishop (bird)".



(CC) BY © Jeff Heath and the Dogon and Bangime Languages Project



(CC) BY-SA ©



(CC) BY © Jeff Heath and the Dogon and Bangime Languages Project

[Ploceus cucullatus](#) (Statius Muller, 1776) .

- **sàà gòlòlìyó** . "village weaver (bird)".



(CC) BY © Simon J. Tonge



(CC) BY © Simon J. Tonge



(CC) BY © Simon J. Tonge

Family: Pycnonotidae

[Pycnonotus barbatus](#) (Desfontaines, 1789) .

- **sàdàà yù-mĩnú** . "bulbul".
- **nóógú** . "bulbul".



(CC) BY © Valentina



(CC) BY-SA © Lip Kee Yap



Author died more than 70 years ago public domain

images ©

Family: Sturnidae

[Buphagus africanus](#) Linnaeus, 1766 .

- **nàá sàdàà** . "oxpecker (bird)".



(CC) BY © Jeff Heath and the Dogon and Bangime Languages Project



(CC) BY © Jeff Heath and the Dogon and Bangime Languages Project



(CC) MARK © creator: Joseph Smit. Richard Bowdler Sharpe (text)

[Onychognathus neumanni](#) (Alexander, 1908) .

- **sàdàà gém** . "crag chestnut-winged (= Neumann's) starling".

Order: Pelecaniformes

Family: Ardeidae

[Bubulcus ibis](#) (Linnaeus, 1758) . Characteristics: carnivore; body-length: 54 cm; white and light brown plumage; yellow bill; breeding bird has a red bill; often found in association with cattle. Biotope: grassland. ([Sinclair 1994](#): 54)

- **àm̀bà-è̀njé** . "cattle egret". Lit. "God-chicken".



(CC) BY-SA © Atamari



(CC) BY-SA © Atamari



(CC) BY © Jeff Heath and the Dogon and Bangime Languages Project

Order: Piciformes

Family: Picidae

[Dendropicos goertae](#) (Statius Muller, 1776) .

- **sàdàà p̀omb̀ò t̀ògú** . "grey woodpecker". Lit. "bird tree.hole-drill".



(CC) BY ©



(CC) BY-SA ©



(CC) BY © Jeff Heath and the Dogon and Bangime Languages Project

Family: Ramphastidae

[*Lybius vieilloti*](#) (Leach, 1815) .

- **bàní sàdàà** . "Vieillot's barbet".



Public Domain by



(CC) BY-SA © Gossipguy

Order: Psittaciformes

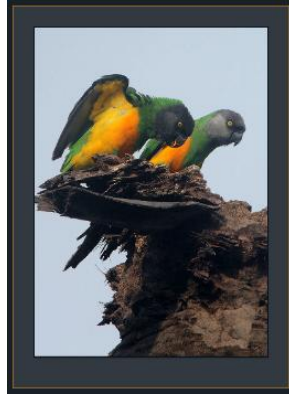
Family: Psittacidae

[*Poicephalus senegalus*](#) (Linnaeus, 1766) .

- **sàdàà kòé** . "Senegal (= yellow-bellied) parrot".



(CC) BY-SA ©



(CC) BY-NC-SA © Steve Garvie



(CC) BY-NC-SA © David Blank

[Psittacula krameri](#) (Scopoli, 1769) .

- sàdàà kòé . "rose-ringed parakeet (= Senegal long-tailed parrot)".
- sàdàà gòlòlìyó . "rose-ringed parakeet (= Senegal long-tailed parrot)".



(CC) BY © Jeff Heath and the Dogon and Bangime
Languages Project



(CC) BY © Jeff Heath and the Dogon and Bangime
Languages Project



(CC) BY © Jeff Heath and the Dogon and Bangime
Languages Project

Order: Strigiformes

Family: Strigidae

[Bubo cinerascens](#) Guerin-Meneville, 1843 .

- dùnù gém . "vermiculated (or: greyish) eagle-owl".



(CC) BY © Jeff Heath and the Dogon and Bangime
Languages Project



(CC) BY © Jeff Heath and the Dogon and Bangime
Languages Project



(CC) BY © Jeff Heath and the Dogon and Bangime
Languages Project

[Ptilopsis leucotis](#) (Temminck, 1820) .

- **dùnù pílú** . "northern white-faced owl".
- **èn-dúnú** . "northern white-faced owl".



(CC) BY-NC © inaturalist



Public Domain by

Family: Tytonidae

[Tyto alba](#) (Scopoli, 1769) .

- **úlùm sàdàà** . "barn owl".
- **íí sàdàà** . "barn owl". Lit. "child's bird".



(CC) BY-SA ©



Public Domain by Racheeo ??



(CC) BY-SA ©

Order: Struthioniformes

Family: Struthionidae

[*Struthio camelus*](#) Linnaeus, 1758 .

- ስጎ-ታጎላላ ~ -ታጎላላ . "ostrich".



Public Domain by Taa DoBeS team
(Boden/Güldemann/Naumann)



Public Domain by Taa DoBeS team
(Boden/Güldemann/Naumann)



Public Domain by Roland Kiessling

Order: Upupiformes

Family: Phoeniculidae

[*Phoeniculus purpureus*](#) (J. F. Miller, 1784) .

- ሰልል ስጎምብ-ታጎላላ . "green wood-hoopoe".



(CC) BY ©



(CC) BY-NC-SA © Bernard DUPONT



(CC) BY-SA ©

Family: Upupidae

[*Upupa epops*](#) Linnaeus, 1758 .

- tòrún-đimbĭré . "hoopoe".



(CC) BY-SA ©



(CC) BY-SA ©



(CC) BY © Biodiversity Heritage Library

Class: Mammalia

Order: Chiroptera

Family: Pteropodidae

[*Rousettus aegyptiacus*](#) (E. Geoffroy, 1810) . Characteristics: herbivore; body-length: 15cm, wing-span: 60cm; dark brown fur; pointy ears;. Biotope: savanna, forest, grassland. ([Cillié 1997](#): 207)

- wààdú . "blackish fruit bat sp".



(CC) BY-SA © Artemy Voikhansky



(CC) BY-SA ©



(CC) BY-NC-SA © Description de l'Égypte, Book 34 (1826), Volume I - Planches : Histoire Naturelle.

Kingdom: Fungi

Phylum: Basidiomycota

Class: Agaricomycetes

Order: Agaricales

Family: Agaricaceae

[*Podaxis pistillaris*](#) (L.) Fr. 1829 .

- tàràà-böy . "puffball".



(CC) BY © Jeff Heath and the Dogon and Bangime Languages Project



(CC) BY © Jeff Heath and the Dogon and Bangime Languages Project



(CC) BY-NC-SA © Douglas Smith

Kingdom: Metazoa

Phylum: Arthropoda

Class: Arachnida

Order: Scorpiones

Family: Buthidae

[Androctonus amoreuxi](#) .

- **mòòmíyé ~ mòòmíyó** . "fat-tailed scorpion".
- **sákènníyè** . "baby fat-tailed scorpion".



(CC) BY © Jeff Heath and the Dogon and Bangime Languages Project



(CC) BY © Jeff Heath and the Dogon and Bangime Languages Project



(CC) BY © Jeff Heath and the Dogon and Bangime Languages Project

Family: Scorpionidae

[Pandinus imperator](#) .

- **sòm mòòmíyè ~ mòòmíyò** . "black emperor scorpion".

Kingdom: Plantae

Phylum: Magnoliophyta

Class: Liliopsida

Order: Commelinales

Family: Commelinaceae

[Commelina forskalaei](#) .

- **ə̀m̀l̀è-k̀s̀ó̀l̀è** . "herb sp.".



(CC) BY © Jeff Heath and the Dogon and Bangime
Languages Project



(CC) BY © Jeff Heath and the Dogon and Bangime
Languages Project



(CC) BY © Jeff Heath and the Dogon and Bangime
Languages Project

Order: Poales

Family: Cyperaceae

[Abildgaardia wallichiana Lye](#) .

- nùmàà sàmǐ-ý . "sedge sp."



(CC) BY © Jeff Heath and the Dogon and Bangime
Languages Project



(CC) BY © Jeff Heath and the Dogon and Bangime
Languages Project

Family: Poaceae

[Digitaria ciliaris var. ciliaris](#) .

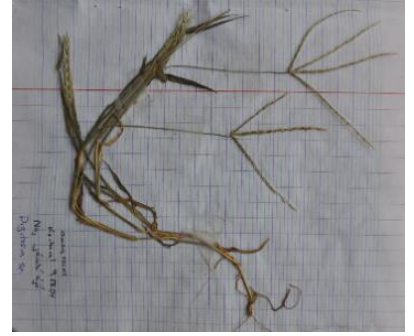
- jàŋ-yàdá . "grass sp."



(CC) BY © Jeff Heath and the Dogon and Bangime Languages Project



(CC) BY © Jeff Heath and the Dogon and Bangime Languages Project



(CC) BY © Jeff Heath and the Dogon and Bangime Languages Project

Class: Magnoliopsida

Order: Brassicales

Family: Capparaceae

[Crataeva adansonii subsp. odora](#)

- ànàwèè . "tree sp."



(CC) BY © Jeff Heath and the Dogon and Bangime Languages Project



(CC) BY © Jeff Heath and the Dogon and Bangime Languages Project



(CC) BY © Jeff Heath and the Dogon and Bangime Languages Project

Order: Cucurbitales

Family: Cucurbitaceae

[Cucumis melo subsp. agrestis var. agrestis Naudin](#)

- ày-jògó . "wild melon sp."



(CC) BY © Jeff Heath and the Dogon and Bangime Languages Project



(CC) BY © Jeff Heath and the Dogon and Bangime Languages Project



(CC) BY © Jeff Heath and the Dogon and Bangime Languages Project

Order: Fabales

Family: Fabaceae

[Indigofera stenophylla var. stenophylla](#)

- àdàpèl-gùnnó . "herb sp."



(CC) BY © Jeff Heath and the Dogon and Bangime Languages Project



(CC) BY © Jeff Heath and the Dogon and Bangime Languages Project



(CC) BY © Jeff Heath and the Dogon and Bangime Languages Project

Order: Garryales

Family: Garryaceae

[Grewia flavescens var flavescens](#)

- òdò-òdò-ý . "shrub sp."
- òdòrò-bòmmó . "shrub sp."



(CC) BY © Jeff Heath and the Dogon and Bangime Languages Project



(CC) BY © Jeff Heath and the Dogon and Bangime Languages Project



(CC) BY © Jeff Heath and the Dogon and Bangime Languages Project

Order: Lamiales

Family: Acanthaceae

[Blepharis linariifolia](#) .

- kùyⁿḁ-dṣlḁ . "medicinal herb sp."



(CC) BY © Jeff Heath and the Dogon and Bangime Languages Project



(CC) BY © Jeff Heath and the Dogon and Bangime Languages Project



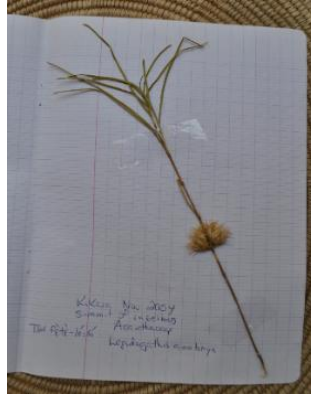
(CC) BY © Jeff Heath and the Dogon and Bangime Languages Project

[Lepidagathis anobrya](#) Nees .

- gànà-kèrú . "herb sp."



(CC) BY-NC-SA © Research Institute Senckenberg



(CC) BY © Jeff Heath and the Dogon and Bangime

Languages Project



(CC) BY © Jeff Heath and the Dogon and Bangime

Languages Project

Family: Lamiaceae

[Endostemon tereticaulis](#) (Poir.) M.R.Ashby .

- jèm-dàbà-ý . "herb sp."



(CC) BY © Jeff Heath and the Dogon and Bangime

Languages Project



(CC) BY-NC © Bart Wursten



(CC) BY-NC © Bart Wursten

[Vitex madiensis subsp. madiensis Oliv.](#) .

- ànà-mùy^ᵐ . "tree sp."
- ànà-mùy^ᵐ tэндélé . "tree sp."



(CC) BY © Jeff Heath and the Dogon and Bangime Languages Project



(CC) BY © Jeff Heath and the Dogon and Bangime Languages Project



(CC) BY © Jeff Heath and the Dogon and Bangime Languages Project

Order: Laurales

Family: Hernandiaceae

[Gyrocarpus americanus subsp. pinnatilobus](#) .

- pòlóm-pòlòm . "tree sp."

Order: Malvales

Family: Malvaceae

[Bombax costatum](#) Pellegrin & Vuillet .

- tó:gíyó . "tree sp."



(CC) BY © Jeff Heath and the Dogon and Bangime Languages Project



(CC) BY © Jeff Heath and the Dogon and Bangime Languages Project

[Cienfuegosia digitata](#) Cav. .

- mèlègèm-kè̀ɲɲé . "prostrate herb sp.". Lit. "djinn-cotton".



(CC) BY © Jeff Heath and the Dogon and Bangime
Languages Project



(CC) BY © Jeff Heath and the Dogon and Bangime
Languages Project



(CC) BY © Jeff Heath and the Dogon and Bangime
Languages Project

[Grewia tenax \(Forsk.\) Fiori](#) .

- ðdò-ódò-ỳ . "shrub sp."



(CC) BY © Jeff Heath and the Dogon and Bangime
Languages Project



(CC) BY © Jeff Heath and the Dogon and Bangime
Languages Project



(CC) BY © Jeff Heath and the Dogon and Bangime
Languages Project

Order: Myrtales

Family: Combretaceae

[Combretum aculeatum](#) Vent. .

- ènè-kémínjé . "shrub sp."



(CC) BY © Jeff Heath and the Dogon and Bangime
Languages Project



(CC) BY © Jeff Heath and the Dogon and Bangime
Languages Project



(CC) BY © Jeff Heath and the Dogon and Bangime
Languages Project

Terminalia macroptera Guill. & Perr. .

- **bòdò-kùbó** . "tree sp."
- **kògó** . "tree sp."



(CC) BY © Jeff Heath and the Dogon and Bangime
Languages Project



(CC) BY © Jeff Heath and the Dogon and Bangime
Languages Project



(CC) BY © Jeff Heath and the Dogon and Bangime
Languages Project

Order: Rosales

Family: Cannabaceae

Celtis toka (Forssk.) F.N. Hepper & J.R.I. Wood .

- **sǐi** . "tree sp."



(CC) BY © Jeff Heath and the Dogon and Bangime
Languages Project



(CC) BY © Jeff Heath and the Dogon and Bangime
Languages Project



(CC) BY-NC-SA © Marco Schmidt

Family: Moraceae

Ficus cordata subsp. lecardii C.C. Berg .

- **wènjàá** . "fig tree sp."



(CC) BY © Jeff Heath and the Dogon and Bangime
Languages Project



(CC) BY © Jeff Heath and the Dogon and Bangime
Languages Project



(CC) BY © Jeff Heath and the Dogon and Bangime
Languages Project

[Ficus ingens var. ingens](#) .

- kò̀̀lól . "fig tree sp."



(CC) BY © Jeff Heath and the Dogon and Bangime
Languages Project



(CC) BY © Jeff Heath and the Dogon and Bangime
Languages Project



(CC) BY © Jeff Heath and the Dogon and Bangime
Languages Project

Order: Santalales

Family: Loranthaceae

[Tapinanthus bangwensis](#) (Engl. & Krause) Danser .

- p̃̀̀dú . "mistletoe sp."



(CC) BY © Jeff Heath and the Dogon and Bangime
Languages Project



(CC) BY © Jeff Heath and the Dogon and Bangime
Languages Project



(CC) BY © Jeff Heath and the Dogon and Bangime
Languages Project

Order: Sapindales

Family: Anacardiaceae

[Lannea microcarpa](#) Engl. & K. Krause .

- **sáá** . "wild grape ree".



(CC) BY-NC-SA © Research Institute Senckenberg



(CC) BY © Jeff Heath and the Dogon and Bangime
Languages Project



(CC) BY © Jeff Heath and the Dogon and Bangime
Languages Project

Order: Solanales

Family: Convolvulaceae

[Ipomoea vagans](#) Baker .

- **tóndó** . "trailing vine sp.".



(CC) BY © Jeff Heath and the Dogon and Bangime Languages Project



(CC) BY © Jeff Heath and the Dogon and Bangime Languages Project



(CC) BY © Jeff Heath and the Dogon and Bangime Languages Project

Phylum: Tracheophyta

Class: Liliopsida

Order: Alismatales

Family: Araceae

[*Amorphophallus baumannii*](#) (Engl.) N.E.Br. .

- *yĩrè-wàrà* . "tiger lily, herb sp."



(CC) BY © Jeff Heath and the Dogon and Bangime Languages Project



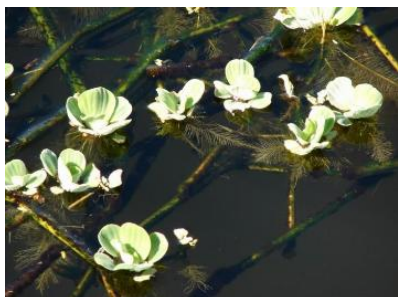
(CC) BY © Jeff Heath and the Dogon and Bangime Languages Project



(CC) BY © Jeff Heath and the Dogon and Bangime Languages Project

[*Pistia stratiotes*](#) L. .

- *àwá* [also *Marsilea*] . "water lettuce".



(CC) BY © Forest & Kim Starr



(CC) BY © Forest & Kim Starr



(CC) BY-NC © Bart Wursten

[Stylochaeton lancifolius](#) .

- **jòmò-súgúlú** . "herb sp.". Lit. "hare-ear".



(CC) BY © Jeff Heath and the Dogon and Bangime Languages Project



(CC) BY-NC-SA © Research Institute Senckenberg



(CC) BY-NC-SA © Research Institute Senckenberg

Order: Arecales

Family: Arecaceae

[Borassus aethiopum](#) Mart. .

- **sím** . "palm sp.".



(CC) BY © Jeff Heath and the Dogon and Bangime
Languages Project



(CC) BY © Jeff Heath and the Dogon and Bangime
Languages Project



(CC) BY © Jeff Heath and the Dogon and Bangime
Languages Project

[Elaeis guineensis](#) Jacq. .

- **těy** . "oil palm (imported)".



(CC) BY-NC-SA © Research Institute Senckenberg



(CC) BY-SA ©



(CC) BY-SA © Cayambe

[Hyphaene thebaica](#) (L.) Mart. .

- **màgá** . "doum palm".



(CC) BY © Jeff Heath and the Dogon and Bangime
Languages Project



(CC) BY-NC-SA © Bibliotheca Alexandrina - EOL Ar



(CC) BY © Jeff Heath and the Dogon and Bangime
Languages Project

[Phoenix dactylifera](#) L. .

- **támòrò** . "date palm".



(CC) MARK © Mmcknight4



(CC) BY-SA ©



(CC) BY-SA © Nevit Dilmen

Order: Asparagales

Family: Amaryllidaceae

[Allium cepa](#) L. .

- **gáw** . "onion".



(CC) BY-SA © Rainer Haessner



(CC) BY-SA © Donovan Govan



(CC) BY-SA © Christoph Waghubinger

[Crinum ornatum](#) (Aiton) Herb. .

- **òndò àná** . "wild onion sp.".



(CC) BY © Jeff Heath and the Dogon and Bangime
Languages Project



(CC) BY © Jeff Heath and the Dogon and Bangime
Languages Project



(CC) BY © Jeff Heath and the Dogon and Bangime
Languages Project

Pancratium trianthum Herb. .

- òndó . "wild onion sp."



(CC) BY © Jeff Heath and the Dogon and Bangime
Languages Project



(CC) BY © Jeff Heath and the Dogon and Bangime
Languages Project



(CC) BY © Jeff Heath and the Dogon and Bangime
Languages Project

Family: Asparagaceae

Asparagus flagellaris (Kunth) Baker .

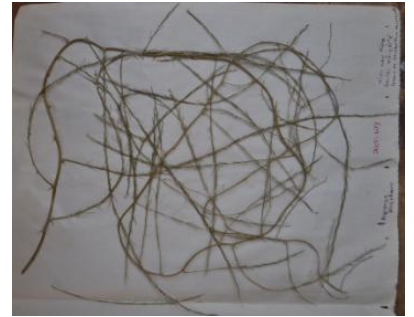
- ànà-kàdù-pógúrú . "scrambling vine sp.". Lit. "man-belt".



(CC) BY © Jeff Heath and the Dogon and Bangime Languages Project



(CC) BY © Jeff Heath and the Dogon and Bangime Languages Project



(CC) BY © Jeff Heath and the Dogon and Bangime Languages Project

Dipcadi viride (L.) Moench .

- òndò ùši-ý . "herb sp."



(CC) BY © Jeff Heath and the Dogon and Bangime Languages Project



(CC) BY © Jeff Heath and the Dogon and Bangime Languages Project



(CC) BY © Jeff Heath and the Dogon and Bangime Languages Project

Sansevieria .

- póló . "agave sp."



(CC) BY © Forest & Kim Starr



(CC) BY-SA ©



(CC) BY © Forest & Kim Starr

Sansevieria liberica Gérôme & Labroy .

- pòlò-gùnnó . "agave sp."



(CC) BY-NC-SA © Research Institute Senckenberg



(CC) BY-NC-SA © Research Institute Senckenberg



(CC) BY © Jeff Heath and the Dogon and Bangime
Languages Project

Family: Xanthorrhoeaceae

[Aloe tenuifolia](#) .

- èṅèlè-gèèndé . "small aloe sp.". Lit. "frog-...".



(CC) BY © Jeff Heath and the Dogon and Bangime
Languages Project



(CC) BY © Jeff Heath and the Dogon and Bangime
Languages Project



(CC) BY © Jeff Heath and the Dogon and Bangime
Languages Project

Order: Commelinales

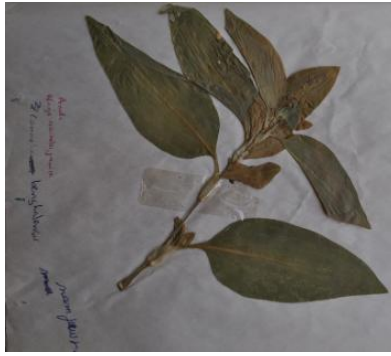
Family: Commelinaceae

[Commelina benghalensis benghalensis](#) .

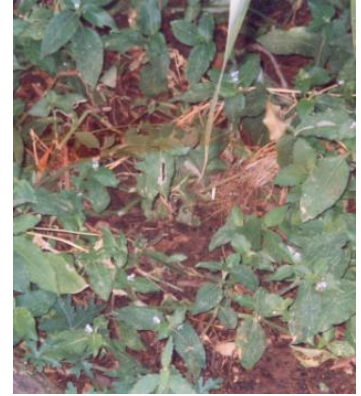
- yèṅèlè jèmbé . "herb sp.". Lit. "fly-shoulderbag".



(CC) BY © Jeff Heath and the Dogon and Bangime Languages Project



(CC) BY © Jeff Heath and the Dogon and Bangime Languages Project



(CC) BY © Jeff Heath and the Dogon and Bangime Languages Project

[Cyanotis lanata](#) Benth. .

- sèlèndíyé . "herb sp."



(CC) BY © Jeff Heath and the Dogon and Bangime Languages Project



(CC) BY © Jeff Heath and the Dogon and Bangime Languages Project



(CC) BY © Jeff Heath and the Dogon and Bangime Languages Project

Order: Dioscoreales

Family: Dioscoreaceae

[Dioscorea alata](#) L. .

- kúù . "yam".



(CC) BY ©



(CC) BY-SA ©



(CC) BY © Forest & Kim Starr

Order: Liliales

Family: Colchicaceae

[Gloriosa superba](#) L. .

- pùlò-yà:-jì:dù . "herb sp."



(CC) BY-NC © Bart Wursten



(CC) BY-NC © Bart Wursten



(CC) BY © Jeff Heath and the Dogon and Bangime Languages Project

Order: Poales

Family: Cyperaceae

[Cyperus articulatus](#) L. .

- nùmàà tëndé . "sedge sp."
- máy"àm . "sedge sp."



(CC) BY © Jeff Heath and the Dogon and Bangime
Languages Project



(CC) BY © Jeff Heath and the Dogon and Bangime
Languages Project



(CC) BY © Jeff Heath and the Dogon and Bangime
Languages Project

[Cyperus rotundus](#) L. .

- **nùmàá** . "sedge sp."



(CC) BY © Jeff Heath and the Dogon and Bangime
Languages Project



(CC) BY © Jeff Heath and the Dogon and Bangime
Languages Project



(CC) BY © Jeff Heath and the Dogon and Bangime
Languages Project

[Pycnus macrostachyos](#) (Lam.) J.Raynal .

- **nùmàà tëndé** . "sedge sp."



(CC) BY © Jeff Heath and the Dogon and Bangime
Languages Project



(CC) BY © Jeff Heath and the Dogon and Bangime
Languages Project



(CC) MARK © USDA NRCS PLANTS Database

Family: Poaceae

[Andropogon gayanus bisquamulatus](#) .

- **télú** . "tall grass sp."



(CC) BY © Jeff Heath and the Dogon and Bangime Languages Project



(CC) BY © Jeff Heath and the Dogon and Bangime Languages Project



(CC) BY © Jeff Heath and the Dogon and Bangime Languages Project

[Aristida adscensionis](#) L. . Characteristics: tufted, annual grass, 80cm tall, the nodes and parts of the inflorescence are purple, the inflorescence is a compact panicle with three-awned spikelets. Biotope: dry river course. ([Van Rooyen et al. 2001](#): 88)

- **àntùmbùlùm-kěm** . "grass sp."



(CC) BY © Jeff Heath and the Dogon and Bangime Languages Project



(CC) BY © Jeff Heath and the Dogon and Bangime Languages Project



(CC) BY © Jeff Heath and the Dogon and Bangime Languages Project

[Brachiaria lata](#) (Schumach.) C.E.Hubb. .

- **kàràŋkànjà** . "grass sp."



(CC) BY © Jeff Heath and the Dogon and Bangime Languages Project



(CC) BY © Jeff Heath and the Dogon and Bangime Languages Project



(CC) BY © Jeff Heath and the Dogon and Bangime Languages Project

[Cenchrus biflorus](#) Roxb. .

- **kòlùmbó** . "burrgrass".



(CC) BY © Jeff Heath and the Dogon and Bangime Languages Project



(CC) BY © Jeff Heath and the Dogon and Bangime Languages Project



(CC) BY © Jeff Heath and the Dogon and Bangime Languages Project

[Cenchrus prieurii](#) (Kunth) Maire .

- **kòlùmbó** . "grass similar to burrgrass".



(CC) BY © Jeff Heath and the Dogon and Bangime Languages Project



(CC) BY © Jeff Heath and the Dogon and Bangime Languages Project



(CC) BY © Jeff Heath and the Dogon and Bangime Languages Project

[Chrysopogon nigritanus](#) (Benth.) Veldkamp .

- **píídè** . "tall, clumpy grass sp.".



(CC) BY © Jeff Heath and the Dogon and Bangime
Languages Project



(CC) BY © Jeff Heath and the Dogon and Bangime
Languages Project



(CC) BY © Jeff Heath and the Dogon and Bangime
Languages Project

[Cymbopogon caesius giganteus](#) .

- **tèl èdègélé** . "giant lemon grass sp."



(CC) BY © Jeff Heath and the Dogon and Bangime
Languages Project



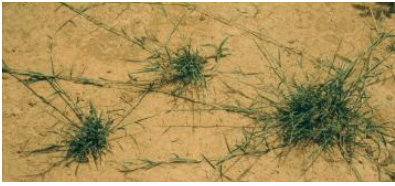
(CC) BY © Jeff Heath and the Dogon and Bangime
Languages Project



(CC) BY © Jeff Heath and the Dogon and Bangime
Languages Project

[Cynodon dactylon](#) (L.) Pers. .

- **pòṅṅò yǎ:** . "couch grass (Bermuda grass)".



(CC) BY © Jeff Heath and the Dogon and Bangime Languages Project



(CC) BY © Jeff Heath and the Dogon and Bangime Languages Project



(CC) BY © Jeff Heath and the Dogon and Bangime Languages Project

[Dactyloctenium aegyptium](#) (L.) Willd. .

- **kènniyè** . "grass sp."



(CC) BY © Jeff Heath and the Dogon and Bangime Languages Project



(CC) BY © Jeff Heath and the Dogon and Bangime Languages Project



(CC) BY © Jeff Heath and the Dogon and Bangime Languages Project

[Digitaria exilis](#) (Kippist) Stapf .

- **ṗḏḏ** . "fonio (grain)".



(CC) BY ©



PD USDA ARS ©



PD USAID ©

[Echinochloa colona](#) (L.) Link .

- sǒŋ-èmmè . "grass sp."



(CC) BY © Jeff Heath and the Dogon and Bangime
Languages Project



(CC) BY © Jeff Heath and the Dogon and Bangime
Languages Project



(CC) BY © Jeff Heath and the Dogon and Bangime
Languages Project

[Elionurus elegans](#) Kunth .

- tǒró-bélé nàá-yàbà . "grass sp."



(CC) BY © Jeff Heath and the Dogon and Bangime
Languages Project



(CC) BY © Jeff Heath and the Dogon and Bangime
Languages Project



(CC) BY © Jeff Heath and the Dogon and Bangime
Languages Project

[Eragrostis tremula](#) Hochst. ex Steud. .

- [àná-wónnúŋ] -kùmò-séré . "grass sp.". Lit. "man shows head".



(CC) BY © Jeff Heath and the Dogon and Bangime
Languages Project



(CC) BY © Jeff Heath and the Dogon and Bangime
Languages Project



(CC) BY © Jeff Heath and the Dogon and Bangime
Languages Project

[Loudetia togoensis](#) (Pilg.) C.E.Hubb. .

- òlò ná: . "grass sp."



(CC) BY © Jeff Heath and the Dogon and Bangime
Languages Project

[Oryza barthii](#) A.Chev. .

- àrà gém . "wild rice sp."



(CC) BY © Jeff Heath and the Dogon and Bangime
Languages Project



(CC) BY © Jeff Heath and the Dogon and Bangime
Languages Project



(CC) BY © Jeff Heath and the Dogon and Bangime
Languages Project

[Oryza sativa](#) L. .

- árá . "rice".



(CC) BY-SA ©



(CC) BY-SA © Wikimedia Commons



(CC) BY-SA © Judgefloro

[Oxytenanthera abyssinica](#) (A.Rich.) Munro .

- pááⁿ . "bamboo".



(CC) BY-NC-SA © Research Institute Senckenberg



(CC) BY-NC-SA © Research Institute Senckenberg



(CC) BY © Jeff Heath and the Dogon and Bangime Languages Project

[Panicum laetum](#) Kunth .

- gwàá . "wild fonio (grass)".



(CC) BY © Jeff Heath and the Dogon and Bangime Languages Project



(CC) BY-NC-SA © Missouri BG!



(CC) BY © Jeff Heath and the Dogon and Bangime Languages Project

Panicum subalbidum Kunth .

- ààñjyè"-èmmé . "tall grass sp."



(CC) BY © Jeff Heath and the Dogon and Bangime
Languages Project



(CC) BY © Jeff Heath and the Dogon and Bangime
Languages Project



(CC) BY © Jeff Heath and the Dogon and Bangime
Languages Project

Pennisetum glaucum (L.) R.Br. .

- yúú . "millet (pearl millet)".



(CC) BY-NC-SA © Research Institute Senckenberg



(CC) BY-NC-SA © Research Institute Senckenberg



(CC) BY-NC-SA © Delile, A.R., 1813. Description de
l'Égypte

Pennisetum pedicellatum Trin. .

- ààbùú . "grass sp."



(CC) BY-NC-SA © Research Institute Senckenberg



(CC) BY © Jeff Heath and the Dogon and Bangime Languages Project



(CC) BY © Jeff Heath and the Dogon and Bangime Languages Project

Pennisetum polystachion (L.) Schult. .

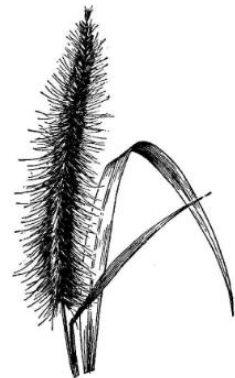
- **tàràà-dúló** . "grass sp."



(CC) BY © Jeff Heath and the Dogon and Bangime Languages Project



(CC) BY © Jeff Heath and the Dogon and Bangime Languages Project



(CC) MARK © USDA NRCS PLANTS Database

Rottboellia cochinchinensis (Lour.) Clayton .

- **kàṅàmá** . "tall grass sp."



(CC) BY © Jeff Heath and the Dogon and Bangime
Languages Project



(CC) BY-NC © Bart Wursten



(CC) BY © Jeff Heath and the Dogon and Bangime
Languages Project

Saccharum officinarum L. .

- **kàlá** . "sugar cane".
- **súkàrò-dínjè** . "sugar cane".



(CC) BY © Forest & Kim Starr



(CC) BY © Forest & Kim Starr



(CC) BY-SA © B.navez

Schizachyrium exile (Hochst.) Pilg. .

- **òlò bánú** . "reddish grass p.".



(CC) BY © Jeff Heath and the Dogon and Bangime
Languages Project



(CC) BY © Jeff Heath and the Dogon and Bangime
Languages Project

Schoenefeldia gracilis Kunth .

- **kèrù kúú-pílù** . "grass sp."
- **sàmàn-jò:lú** . "grass sp."



(CC) BY-NC-SA © Research Institute Senckenberg



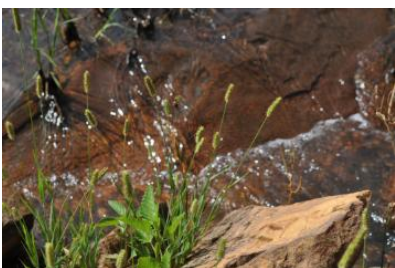
(CC) BY-NC-SA © Research Institute Senckenberg



(CC) BY © Jeff Heath and the Dogon and Bangime
Languages Project

Setaria pumila (L.f.) Roem. & Schult. .

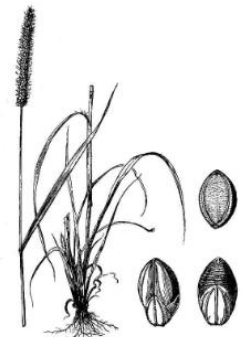
- **tàràà-dúló** . "grass sp."



(CC) BY © Jeff Heath and the Dogon and Bangime
Languages Project



(CC) PUBLICDOMAIN © Pavel Šinkyřík



(CC) MARK © USDA NRCS PLANTS Database

Sorghum arundinaceum (Desv.) Stapf .

- èmmè sàlàlá . "grass sp."



(CC) BY-NC © Petra Ballings



(CC) BY-NC © Petra Ballings



(CC) BY © Jeff Heath and the Dogon and Bangime Languages Project

Sorghum bicolor (L.) Moench .

- èmmé . "sorghum (sweet)".
- sàná-géné . "sorghum (sweet)".



(CC) BY-SA ©



(CC) BY-NC © Marco Schmidt



(CC) BY-NC © Marco Schmidt

Sporobolus microprotus Stapf .

- [gùlònò] -kèrú . "grass sp."



(CC) BY © Jeff Heath and the Dogon and Bangime
Languages Project



(CC) BY © Jeff Heath and the Dogon and Bangime
Languages Project



(CC) BY © Jeff Heath and the Dogon and Bangime
Languages Project

[Tripogon minimus](#) (A.Rich.) Hochst. ex Steud. .

- **dúmmúliyèm** . "tiny grass sp.".



(CC) BY-NC-SA © Research Institute Senckenberg



(CC) BY © Jeff Heath and the Dogon and Bangime
Languages Project



(CC) BY © Jeff Heath and the Dogon and Bangime
Languages Project

[Triticum aestivum](#) L. .

- **árkàmà** . "wheat".



(CC) BY © Dag Terje Filip Endresen



(CC) BY-SA ©



(CC) BY-SA ©

[*Zea mays*](#) L. .

- sàrà-èmmé . "corn (maize)".



(CC) BY-SA ©



(CC) BY ©



(CC) BY-SA ©

Order: Zingiberales

Family: Zingiberaceae

[*Aframomum melegueta*](#) K.Schum. .

- móđógó . "malegueta (nut sold in markets as eye medicine)".



(CC) BY-NC © Scamperdale



(CC) BY © Inna Moody



(CC) BY-SA © Lemmikipuu

[*Zingiber officinale*](#) Roscoe .

- ñàmàkú . "ginger".



(CC) BY © Jeff Heath and the Dogon and Bangime Languages Project



(CC) BY ©



Public Domain by

Class: Magnoliopsida

Order: Apiales

Family: Apiaceae

[Ammodaucus leucotrichus](#) Coss. .

- àrkàmínà . "spice sp."



(CC) BY-SA ©

Order: Asterales

Family: Asteraceae

[Acanthospermum hispidum](#) .

- kébbè . "prickly herb sp."
- dɛ:-gíyɛ . "prickly herb sp."



(CC) BY © Jeff Heath and the Dogon and Bangime Languages Project



(CC) BY © Jeff Heath and the Dogon and Bangime Languages Project

[Ascaricida richardii](#) .

- **sàdàà-úrìyó** . "herb sp."



(CC) BY © Jeff Heath and the Dogon and Bangime Languages Project



(CC) BY © Jeff Heath and the Dogon and Bangime Languages Project



(CC) BY © Jeff Heath and the Dogon and Bangime Languages Project

[Bidens biternata](#) .

- **kèrù-gònjì-ý** . "herb sp."



(CC) BY © Jeff Heath and the Dogon and Bangime Languages Project



(CC) BY © Jeff Heath and the Dogon and Bangime Languages Project

Blumea axillaris .

- **ùgùrù-kèrú** . "herb sp."



(CC) BY © Jeff Heath and the Dogon and Bangime
Languages Project



(CC) BY © Jeff Heath and the Dogon and Bangime
Languages Project



(CC) BY © Jeff Heath and the Dogon and Bangime
Languages Project

Kleinia cliffordiana .

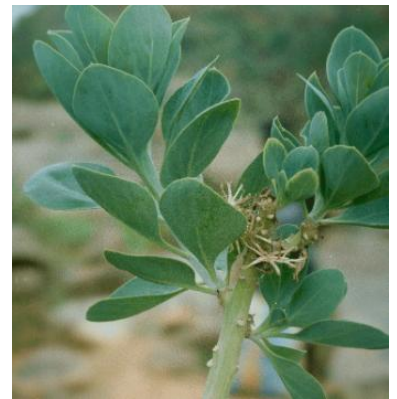
- **tùtùmbùlól** . "bush sp."
- **sùlò-júgú** . "bush sp."



(CC) BY © Jeff Heath and the Dogon and Bangime
Languages Project



(CC) BY © Jeff Heath and the Dogon and Bangime
Languages Project



(CC) BY © Jeff Heath and the Dogon and Bangime
Languages Project

Polydora serratuloides .

- **kùrùndù-kèrú ~ kùrùndùn-kèrú** . "herb sp."



(CC) BY-NC-SA © Research Institute Senckenberg



(CC) BY © Jeff Heath and the Dogon and Bangime Languages Project

Order: Boraginales

Family: Boraginaceae

[Cordia sinensis](#) Lam. .

- ènègĩrĩⁿ-sáá . "tree sp.". Lit. "herder-wild.grape".



(CC) BY © Jeff Heath and the Dogon and Bangime Languages Project



(CC) BY © Jeff Heath and the Dogon and Bangime Languages Project



(CC) BY © Jeff Heath and the Dogon and Bangime Languages Project

Order: Brassicales

Family: Capparaceae

[Boscia senegalensis](#) Lam. .

- èèlé . "shrub sp.".



(CC) BY © Jeff Heath and the Dogon and Bangime Languages Project



(CC) BY © Jeff Heath and the Dogon and Bangime Languages Project



(CC) BY © Jeff Heath and the Dogon and Bangime Languages Project

[Cadaba farinosa](#) .

- **kókólú** . "scrambling shrub sp."



(CC) BY © Jeff Heath and the Dogon and Bangime Languages Project



(CC) BY © Jeff Heath and the Dogon and Bangime Languages Project



(CC) BY © Jeff Heath and the Dogon and Bangime Languages Project

[Capparis sepiaria](#) L. .

- **tàràà-òlǒm** . "thorny liana sp."



(CC) BY © Jeff Heath and the Dogon and Bangime Languages Project



(CC) BY © Jeff Heath and the Dogon and Bangime Languages Project



(CC) BY © Jeff Heath and the Dogon and Bangime Languages Project

[Maerua crassifolia](#) Forssk. .

- **súsúńó** . "tree sp."



(CC) BY © Jeff Heath and the Dogon and Bangime
Languages Project



(CC) BY © Jeff Heath and the Dogon and Bangime
Languages Project



(CC) BY © Jeff Heath and the Dogon and Bangime
Languages Project

Family: Caricaceae

[Carica papaya](#) L. .

- **màànjè-ý** . "papaya".



(CC) BY-NC-SA © Reinaldo aguilar



(CC) BY-NC-SA © Reinaldo aguilar



(CC) BY © Forest & Kim Starr

Family: Cleomaceae

[Arivela viscosa](#) .

- **[àná-kùm] -pòfi-ý** . "herb sp.". Lit. "bachelor-sesame".



(CC) BY © Jeff Heath and the Dogon and Bangime
Languages Project



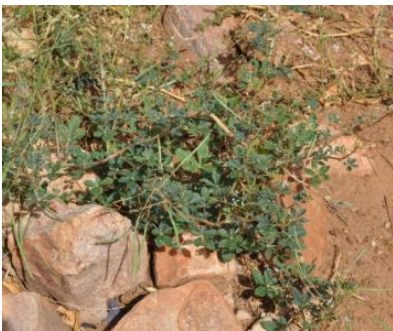
(CC) BY © Jeff Heath and the Dogon and Bangime
Languages Project



(CC) BY © Jeff Heath and the Dogon and Bangime
Languages Project

[Gynandropsis gynandra](#) L. . Characteristics: annual herb; palmately compound leaves; white flowers; fruit is an elongated capsule on a long stalk. Biotope: dry river course, mountains. ([Van Rooyen et al. 2001](#): 164; [Burke 2007](#): 80)

- **gùlúnù** . "herb sp."



(CC) BY © Jeff Heath and the Dogon and Bangime
Languages Project



(CC) BY © Forest & Kim Starr

Order: Caryophyllales

Family: Amaranthaceae

[Achyranthes aspera sicula](#) .

- **ènjè-ènjè-gíyè** . "herb sp."



(CC) BY © Jeff Heath and the Dogon and Bangime
Languages Project



(CC) BY © Jeff Heath and the Dogon and Bangime
Languages Project



(CC) BY © Jeff Heath and the Dogon and Bangime
Languages Project

[Celosia trigyna](#) L. .

- yààmpè"-sémélé . "herb sp."



(CC) BY © Jeff Heath and the Dogon and Bangime
Languages Project



(CC) BY © Jeff Heath and the Dogon and Bangime
Languages Project



(CC) BY © Jeff Heath and the Dogon and Bangime
Languages Project

Family: Nyctaginaceae

[Boerhavia coccinea](#) Mill. .

- [yà-m-pè:] -sémélé . "herb sp. (hogweed)". Lit. "[old woman]-rag".



(CC) BY © Jeff Heath and the Dogon and Bangime Languages Project



(CC) BY © Jeff Heath and the Dogon and Bangime Languages Project



(CC) BY © Jeff Heath and the Dogon and Bangime Languages Project

[*Boerhavia repens*](#) L. . Characteristics: annual herb with thick roots and slender, hairy stems; egg- or lance-shaped leaves (3 cm); usually 2-7 white, pink or mauve flowers in clusters at the tips of shoots. Biotope: dry river course. ([Van Rooyen et al. 2001](#): 126)

- [yà-m-pè:] -sémélé . "herb sp. (hogweed)". Lit. "[old woman]-rag".



(CC) BY © Jeff Heath and the Dogon and Bangime Languages Project



(CC) BY © Jeff Heath and the Dogon and Bangime Languages Project



(CC) BY © Jeff Heath and the Dogon and Bangime Languages Project

Family: Portulacaceae

[*Portulaca oleracea*](#) L. .

- dàdàgùlá . "purslane (weed)".



(CC) BY © Jeff Heath and the Dogon and Bangime
Languages Project



(CC) BY © Forest & Kim Starr



(CC) BY © Jeff Heath and the Dogon and Bangime
Languages Project

Order: Cucurbitales

Family: Cucurbitaceae

[*Citrullus lanatus*](#) (Thunb.) Matsumura & Nakai . Characteristics: annual, creeping herb; the hairy leaves are divided into 3-5 lobes; male and female flowers grow on the same plant and are yellow; the fruit is round with a diameter of 15-20 cm and a yellow and green surface. Biotope: sandy soil, dune. ([Van der Walt and le Riche 1999](#): 110; [Van Rooyen et al. 2001](#): 148)

- **j̀̀g̀̀ k̀̀l̀̀-̀̀b̀̀ǹ̀** . "watermelon (cultivated, eaten raw)". Lit. "melon belly-red".
- **ǹ̀-̀̀j̀̀g̀̀** . "watermelon (cultivated, all forms)". Lit. "cow-melon".



(CC) BY © Jeff Heath and the Dogon and Bangime
Languages Project



Public Domain by Christfried Naumann

[*Coccinia grandis*](#) (L.) Voigt .

- **[̀̀ǹ̀-̀̀g̀̀r̀̀m̀̀] -k̀̀-̀̀m̀̀b̀̀** . "wild melon sp. (cucumber shape)". Lit. "goatherd-zaban".



(CC) BY © Jeff Heath and the Dogon and Bangime
Languages Project



(CC) BY © Jeff Heath and the Dogon and Bangime
Languages Project



(CC) BY © Jeff Heath and the Dogon and Bangime
Languages Project

[Cucurbita](#) Vanhöffen, 1914 .

- **gónó** . "squash".



PD ©



(CC) BY-SA ©



(CC) BY-SA © Michal Mañas

[Lagenaria siceraria](#) (Molina) Standl. .

- **gàbá** . "gourd (calabash) plant".



(CC) BY © Jeff Heath and the Dogon and Bangime
Languages Project



(CC) BY © Forest & Kim Starr



(CC) BY © Forest & Kim Starr

Momordica balsamina L. . Characteristics: perennial climber; leaves are divided into 5-7 lobes, the margins toothed; the flowers are white to yellow with fused petals; the egg-shaped fruit is orange to red when ripe and covered with spines; the plant emits an unpleasant smell when bruised. Biotope: savanna, sandy soil. ([Van Rooyen et al. 2001](#): 152)

- **lúmbú-lúmbú** . "liana sp."
- **lù-lúmbú** . "liana sp."



(CC) BY © Jeff Heath and the Dogon and Bangime
Languages Project



(CC) BY-SA © H. Zell



(CC) BY © Jeff Heath and the Dogon and Bangime
Languages Project

Order: Ericales

Family: Ebenaceae

Diospyros mespiliformis Hochst. ex A.DC. .

- **ààgúlú** . "tree sp."



(CC) BY © Jeff Heath and the Dogon and Bangime
Languages Project



(CC) BY © Jeff Heath and the Dogon and Bangime
Languages Project



(CC) BY © Jeff Heath and the Dogon and Bangime
Languages Project

Family: Sapotaceae

Pouteria alnifolia (Baker) Roberty .

- **kúlúmólú** . "tree sp."



(CC) BY-NC-SA © Research Institute Senckenberg



(CC) BY-NC-SA © Research Institute Senckenberg



(CC) BY-NC-SA © Research Institute Senckenberg

[Vitellaria paradoxa paradoxa](#) .

- mǐnjú . "karité (tree)".



(CC) BY © Jeff Heath and the Dogon and Bangime
Languages Project



(CC) BY © Jeff Heath and the Dogon and Bangime
Languages Project



(CC) BY © Jeff Heath and the Dogon and Bangime
Languages Project

Order: Fabales

Family: Fabaceae

[Abrus precatorius](#) L. .

- ènè-gĩri-m dùgò-ý . "herb with hard red-and-black berries".



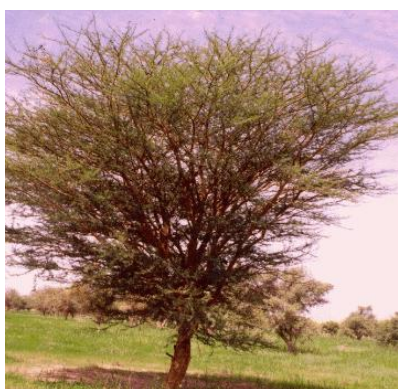
(CC) BY © Jeff Heath and the Dogon and Bangime Languages Project



(CC) BY © Jeff Heath and the Dogon and Bangime Languages Project

[Acacia seyal](#) Delile .

- **sèmbilè pílú** . "acacia sp."



(CC) BY © Jeff Heath and the Dogon and Bangime Languages Project



(CC) BY © Jeff Heath and the Dogon and Bangime Languages Project

[Acacia tortilis](#) (Forssk.)Hayne .

- **sèmbilè gém** . "acacia sp."



(CC) BY © Jeff Heath and the Dogon and Bangime Languages Project



(CC) BY © Jeff Heath and the Dogon and Bangime Languages Project

[Aeschynomene indica](#) L. .

- òmòlò-yùlò . "tall herb sp."



(CC) BY © Jeff Heath and the Dogon and Bangime
Languages Project



(CC) BY © Jeff Heath and the Dogon and Bangime
Languages Project



(CC) BY © Jeff Heath and the Dogon and Bangime
Languages Project

[Albizia chevalieri](#) Harms .

- yùlò-kábákábá . "tree sp."



(CC) BY © Jeff Heath and the Dogon and Bangime
Languages Project



(CC) BY © Jeff Heath and the Dogon and Bangime
Languages Project



(CC) BY © Jeff Heath and the Dogon and Bangime
Languages Project

[Alysicarpus ovalifolius](#) (Schum.)Leonard .

- síngàrù . "herb sp."



(CC) BY © Jeff Heath and the Dogon and Bangime
Languages Project



(CC) BY © Jeff Heath and the Dogon and Bangime
Languages Project



(CC) BY © Jeff Heath and the Dogon and Bangime
Languages Project

[Arachis hypogaea](#) L. .

- èlè-kèlè sàmà-gíné . "peanut".



(CC) BY-SA © Pollinator



(CC) BY-NC-SA © Research Institute Senckenberg



(CC) BY © Roberto Verzo

[Bauhinia reticulata](#) DC. .

- kòyè-kòyèbé . "tree sp.".



(CC) BY © Jeff Heath and the Dogon and Bangime
Languages Project



(CC) BY © Jeff Heath and the Dogon and Bangime
Languages Project



(CC) BY © Jeff Heath and the Dogon and Bangime
Languages Project

[Bauhinia rufescens](#) Lam. .

- **nòmmd-télú** . "tree sp."



(CC) BY © Jeff Heath and the Dogon and Bangime
Languages Project



(CC) BY © Jeff Heath and the Dogon and Bangime
Languages Project



(CC) BY © Jeff Heath and the Dogon and Bangime
Languages Project

[Canavalia](#) .

- **ànàsàrà-nǔm** . "liana sp.". Lit. "white.person-cowpea".



(CC) BY © David Eickhoff



(CC) BY-NC-SA © Reinaldo aguilar



(CC) BY © Forest & Kim Starr

[Cassia sieberiana](#) DC. .

- **tòndò mùnjú** . "tree sp."



(CC) BY © Jeff Heath and the Dogon and Bangime
Languages Project



(CC) BY © Jeff Heath and the Dogon and Bangime
Languages Project



(CC) BY © Jeff Heath and the Dogon and Bangime
Languages Project

Chamaecrista absus (L.)H.S.Irwin & Barneby .

- **gàmmà- [ɛ̀lɛ-kɛ̀lɛ] àná** . "bush sp."



(CC) BY © Jeff Heath and the Dogon and Bangime
Languages Project



(CC) BY © Jeff Heath and the Dogon and Bangime
Languages Project



(CC) BY © Jeff Heath and the Dogon and Bangime
Languages Project

Chamaecrista mimosoides (L.)Greene .

- **bòdàrá** . "herb sp."



(CC) BY © Jeff Heath and the Dogon and Bangime
Languages Project



(CC) BY © Jeff Heath and the Dogon and Bangime
Languages Project

[Chamaecrista nigricans](#) (Vahl)Greene .

- àdà-pèlú . "herb sp."



(CC) BY © Jeff Heath and the Dogon and Bangime
Languages Project



(CC) BY © Jeff Heath and the Dogon and Bangime
Languages Project



(CC) BY © Jeff Heath and the Dogon and Bangime
Languages Project

[Crotalaria podocarpa](#) DC. . Characteristics: annual herb with spreading stems; up to 3 cm tall; trifoliate leaves; pale yellow flowers; fruit is an inflated pod with stiff hair. Biotope: sandy soil. ([Van Rooyen et al. 2001](#): 130)

- gàmàmà- [élé-kélé] . "herb sp.". Lit. "cat-peanut".



(CC) BY © Jeff Heath and the Dogon and Bangime
Languages Project



(CC) BY © Jeff Heath and the Dogon and Bangime
Languages Project



(CC) BY © Jeff Heath and the Dogon and Bangime
Languages Project

[Crotalaria retusa](#) L. .

- gàmàmà- [élé-kélé] . "herb sp.". Lit. "cat-peanut".



(CC) BY © Jeff Heath and the Dogon and Bangime
Languages Project



(CC) BY © Jeff Heath and the Dogon and Bangime
Languages Project



(CC) BY © Jeff Heath and the Dogon and Bangime
Languages Project

[Dalbergia melanoxylon](#) Guill. & Perr. .

- **jàṅá** . "tree sp."



(CC) BY © Jeff Heath and the Dogon and Bangime
Languages Project



(CC) BY © Jeff Heath and the Dogon and Bangime
Languages Project



(CC) BY © Jeff Heath and the Dogon and Bangime
Languages Project

[Daniellia oliveri](#) (Rolfe) Hutch. & Dalziel .

- **kèdé** . "tree sp."



(CC) BY © Jeff Heath and the Dogon and Bangime
Languages Project



(CC) BY © Jeff Heath and the Dogon and Bangime
Languages Project



(CC) BY © Jeff Heath and the Dogon and Bangime
Languages Project

Detarium microcarpum Guill. & Perr. .

- **pòndú** . "tree sp."



(CC) BY © Jeff Heath and the Dogon and Bangime
Languages Project



(CC) BY-NC-SA © Research Institute Senckenberg



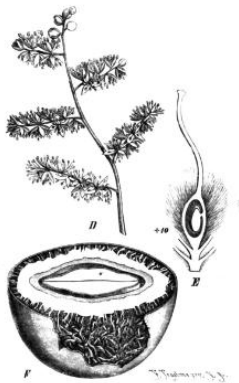
(CC) BY © Jeff Heath and the Dogon and Bangime
Languages Project

Detarium senegalense J.F.Gmel. .

- **àmàlò-pòndú** . "tree sp."



(CC) BY © Jeff Heath and the Dogon and Bangime
Languages Project



Public Domain by



CC-Zero ©

Dichrostachys cinerea (L.)Wight & Arn. . Characteristics: shrub or small tree; 1-3m tall, flowers in an elongated drooping spike, composed of two sections: a pink tuft of sterile flowers and below a section of fertile yellow flowers; the pods are curly and twisted; Biotope: grassland, sandy soil. ([Van Rooyen et al. 2001](#): 44)

- **pógó** . "shrub sp."



(CC) BY © Jeff Heath and the Dogon and Bangime
Languages Project



(CC) BY © Jeff Heath and the Dogon and Bangime
Languages Project



(CC) BY © Jeff Heath and the Dogon and Bangime
Languages Project

Erythrina senegalensis DC. .

- **gòndò-sèñéyⁿ** . "tree sp."
- **tùmbùlùn-sèñéyⁿ** . "tree sp."



(CC) BY © Jeff Heath and the Dogon and Bangime
Languages Project



(CC) BY-NC-SA © Research Institute Senckenberg



(CC) BY © Jeff Heath and the Dogon and Bangime
Languages Project

Faidherbia albida (Delile)A.Chev. .

- **séñé** . "balanzan tree".



(CC) BY-NC © Bart Wursten



(CC) BY-NC-SA © Research Institute Senckenberg



(CC) BY-NC © Bart Wursten

[Indigofera astragalina](#) DC. .

- kèrù nàm-đimbiyé . "herb sp.". Lit. "grass sun-follow".



(CC) BY © Jeff Heath and the Dogon and Bangime Languages Project



(CC) BY © Jeff Heath and the Dogon and Bangime Languages Project



(CC) BY © Jeff Heath and the Dogon and Bangime Languages Project

[Indigofera omissa](#) J.B.Gillett .

- tàbà-gàlá . "shrub sp.".



(CC) BY © Jeff Heath and the Dogon and Bangime Languages Project



(CC) BY © Jeff Heath and the Dogon and Bangime Languages Project



(CC) BY © Jeff Heath and the Dogon and Bangime Languages Project

[Indigofera tinctoria tinctoria](#) .

- gàlá . "herb sp."



(CC) BY © Jeff Heath and the Dogon and Bangime
Languages Project



(CC) BY © Jeff Heath and the Dogon and Bangime
Languages Project



(CC) BY © Jeff Heath and the Dogon and Bangime
Languages Project

[Lonchocarpus laxiflorus](#) Guill. & Perr. .

- sèṅṅindè-ý . "tree sp."



(CC) BY © Jeff Heath and the Dogon and Bangime
Languages Project



(CC) BY © Jeff Heath and the Dogon and Bangime
Languages Project



(CC) BY © Jeff Heath and the Dogon and Bangime
Languages Project

[Mundulea sericea](#) (Willd.)A.Chev. .

- bénnú . "shrub sp."



(CC) BY © Jeff Heath and the Dogon and Bangime Languages Project



(CC) BY-NC © Bart Wursten



(CC) BY © Jeff Heath and the Dogon and Bangime Languages Project

Neptunia oleracea Lour. .

- **đi: tɔ̀ndɔ̀** . "floating vine sp."



(CC) BY-NC-SA © Research Institute Senckenberg



(CC) BY-NC © Karine Aigner



(CC) BY © Jeff Heath and the Dogon and Bangime Languages Project

Parkia biglobosa (Jacq.)G.Don .

- **yùlɔ̀** . "locust-bean (nééré) tree".



(CC) BY-NC-SA © Research Institute Senckenberg



(CC) BY-NC-SA © Research Institute Senckenberg



(CC) BY-SA ©

Parkinsonia aculeata L. .

- **à̀nàsà:rà-bà:lá** . "parkinsonia tree".



(CC) BY © Jeff Heath and the Dogon and Bangime Languages Project



(CC) BY © Jeff Heath and the Dogon and Bangime Languages Project



(CC) BY © Forest & Kim Starr

[Prosopis africana](#) (Guill. & Perr.)Taub. .

- **kīlè-nálú** . "a wood for blacksmiths' charcoal".



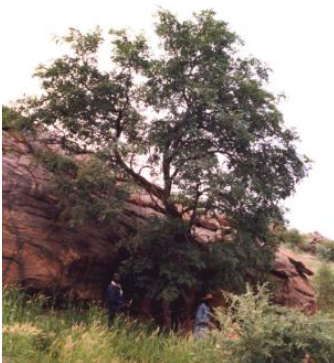
(CC) BY © Jeff Heath and the Dogon and Bangime Languages Project



(CC) BY © Jeff Heath and the Dogon and Bangime Languages Project

[Pterocarpus erinaceus](#) Poir. .

- **wăy** . "tree sp."



(CC) BY © Jeff Heath and the Dogon and Bangime Languages Project



(CC) BY © Jeff Heath and the Dogon and Bangime Languages Project



(CC) BY © Jeff Heath and the Dogon and Bangime Languages Project

Pterocarpus lucens Guill. & Perr. .

- **bèbèlé** . "tree sp."



(CC) BY-NC-SA © Research Institute Senckenberg



(CC) BY-NC-SA © Research Institute Senckenberg



(CC) BY © Jeff Heath and the Dogon and Bangime
Languages Project

Rhynchosia minima (L.)DC. .

- **[pèrè-pèrè] -nũm** . "vine sp.". Lit. "dove-cowpea".



(CC) BY-NC © Katharina Schumann



(CC) BY-NC-SA © Rob Westerduijn



(CC) BY © Dick Culbert

Senna italica italica .

- **gàṅàlù gùnnó** . "bush sp."



(CC) BY © Jeff Heath and the Dogon and Bangime
Languages Project



(CC) BY © Jeff Heath and the Dogon and Bangime
Languages Project



(CC) BY © Jeff Heath and the Dogon and Bangime
Languages Project

Senna obtusifolia (L.)H.S.Irwin & Barneby .

- **gàṅàlú** . "herb sp."



(CC) BY © Jeff Heath and the Dogon and Bangime Languages Project



(CC) PUBLICDOMAIN © Michael Kesi



(CC) BY © Jeff Heath and the Dogon and Bangime Languages Project

[Senna occidentalis](#) (L.)Link .

- **débbà-lóbbò** . "bush sp."



(CC) BY-NC © Bart Wursten



(CC) BY © John Tann



Public Domain by

[Sesbania sesban](#) (L.)Merr. .

- **àmàlò-yùlò** . "tree sp."



(CC) BY © Jeff Heath and the Dogon and Bangime Languages Project



(CC) BY-NC-SA © Research Institute Senckenberg



(CC) BY-NC-SA © Research Institute Senckenberg

Tamarindus indica L. .

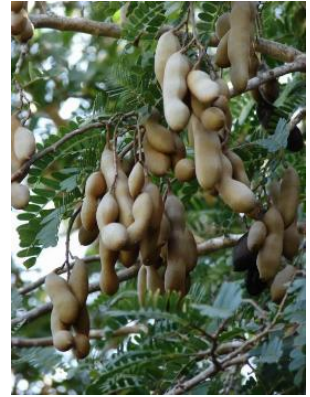
- **òmmólú** . "tamarind".



(CC) BY © Jeff Heath and the Dogon and Bangime Languages Project



(CC) BY © Jeff Heath and the Dogon and Bangime Languages Project



(CC) BY © Forest & Kim Starr

Vachellia nilotica .

- **bààlá** . "acacia sp.".



(CC) BY © Jeff Heath and the Dogon and Bangime Languages Project



(CC) BY © Jeff Heath and the Dogon and Bangime Languages Project



(CC) BY © Jeff Heath and the Dogon and Bangime Languages Project

Vigna .

- **nùm-kilé** . "wild cow-pea".



(CC) BY © Jeff Heath and the Dogon and Bangime
Languages Project



(CC) BY © Jeff Heath and the Dogon and Bangime
Languages Project



(CC) BY © Jeff Heath and the Dogon and Bangime
Languages Project

[Vigna subterranea](#) (L.)Verdc. .

- èlè-kèlè téndélé . "ground nut".



(CC) BY-SA © Kembangraps



(CC) MARK © Kkibumba



(CC) BY-SA ©

[Vigna unguiculata](#) (L.)Walp. .

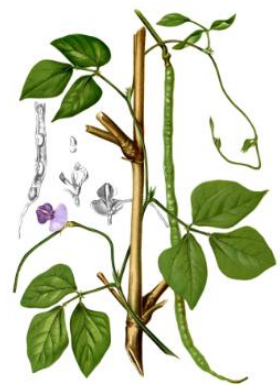
- nŭm . "cow-pea".



(CC) BY-SA ©



(CC) BY-SA © Ton Rulkens



Public Domain by

[Zornia glochidiata](#) DC. .

- **déngèrè** . "herb sp.". From Ful .



(CC) BY-NC © Bart Wursten



(CC) BY-NC © Bart Wursten



(CC) BY-NC © Bart Wursten

Order: Gentianales

Family: Apocynaceae

[Calotropis procera](#) .

- **àà-pòbó** . "shrub sp.".



(CC) BY © Jeff Heath and the Dogon and Bangime
Languages Project



(CC) BY © Jeff Heath and the Dogon and Bangime
Languages Project

[Caralluma acutangula](#) Decne. .

- **ómóló bàà-kàmmá** . "succulent plant sp.".



(CC) BY © Jeff Heath and the Dogon and Bangime Languages Project



(CC) BY © Jeff Heath and the Dogon and Bangime Languages Project



(CC) BY © Jeff Heath and the Dogon and Bangime Languages Project

Saba senegalensis (A. DC.) Pichon .

- **kàmbé** . "zaban (woody liana)".



(CC) BY-NC-SA © Research Institute Senckenberg



(CC) BY © Jeff Heath and the Dogon and Bangime Languages Project



(CC) BY-NC-SA © Research Institute Senckenberg

Strophanthus sarmentosus DC. .

- **nónóm-dògòp̄iyà** . "scrambling shrub sp.".



(CC) BY © Jeff Heath and the Dogon and Bangime Languages Project



(CC) BY-NC-SA © Research Institute Senckenberg



(CC) BY-NC-SA © Research Institute Senckenberg

Family: Rubiaceae

Feretia apodanthera Delile .

- **ǰìḡiriyé** . "shrub sp.". Lit. "stirring stick".



(CC) BY © Jeff Heath and the Dogon and Bangime
Languages Project



(CC) BY © Jeff Heath and the Dogon and Bangime
Languages Project

Gardenia sokotensis Hutch. .

- **ànantànná** . "shrub sp."



(CC) BY-NC-SA © Research Institute Senckenberg



(CC) BY-NC-SA © Research Institute Senckenberg



(CC) BY-NC-SA © Research Institute Senckenberg

Gardenia ternifolia Schumach. & Thonn. .

- **kàkànjè-ý** . "shrub sp."



(CC) BY © Jeff Heath and the Dogon and Bangime
Languages Project



(CC) BY © Jeff Heath and the Dogon and Bangime
Languages Project



(CC) BY © Jeff Heath and the Dogon and Bangime
Languages Project

Mitracarpus hirtus (L.) DC. .

- **sùgùlù-kèrú** . "herb sp."



(CC) BY © Jeff Heath and the Dogon and Bangime
Languages Project



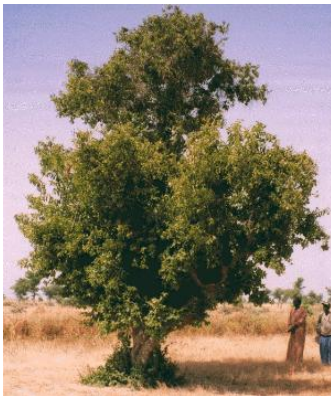
(CC) BY © Jeff Heath and the Dogon and Bangime
Languages Project



(CC) BY © Jeff Heath and the Dogon and Bangime
Languages Project

Mitragyna inermis (Willd.) Kuntze .

- **sàtánná** . "tree sp."



(CC) BY © Jeff Heath and the Dogon and Bangime
Languages Project



(CC) BY © Jeff Heath and the Dogon and Bangime
Languages Project



(CC) BY © Jeff Heath and the Dogon and Bangime
Languages Project

Sarcocephalus latifolius Sm. .

- **ày-gíyé** . "tree sp."



(CC) BY-NC-SA © Research Institute Senckenberg



(CC) BY-NC-SA © Research Institute Senckenberg



(CC) BY © Jeff Heath and the Dogon and Bangime
Languages Project

[Spermacoce chaetocephala](#) DC. .

- sèlèndíyé . "herb sp."



(CC) BY © Jeff Heath and the Dogon and Bangime
Languages Project



(CC) BY-NC-SA © Research Institute Senckenberg



(CC) BY © Jeff Heath and the Dogon and Bangime
Languages Project

[Spermacoce ruelliae](#) DC. .

- sùgùlù-kèrú . "herb sp."



(CC) BY © Jeff Heath and the Dogon and Bangime
Languages Project



(CC) BY © Jeff Heath and the Dogon and Bangime
Languages Project



(CC) BY © Jeff Heath and the Dogon and Bangime
Languages Project

Order: Lamiales

Family: Acanthaceae

[Hygrophila auriculata](#) (Hamilt.) M.R. Almeida & S.M. Almeida .

- **bènǰĩⁿ-sóŋóló** . "herb sp."



(CC) BY © Jeff Heath and the Dogon and Bangime
Languages Project



(CC) BY © Jeff Heath and the Dogon and Bangime
Languages Project



(CC) BY © Jeff Heath and the Dogon and Bangime
Languages Project

[Nelsonia canescens](#) (Lam.) Spreng. .

- **b̀̀r̀̀g̀̀-ómmólù** . "herb sp."



(CC) BY-NC © Helen Pickering



(CC) BY-NC-SA © Research Institute Senckenberg



(CC) BY © Jeff Heath and the Dogon and Bangime Languages Project

Family: Lamiaceae

[Hyptis spicigera](#) (Aubl.) Harley & J.F.B.Pastore .

- kerù-pè:điŋé . "herb sp.".



(CC) BY © Jeff Heath and the Dogon and Bangime Languages Project



(CC) BY © Jeff Heath and the Dogon and Bangime Languages Project



(CC) BY-NC-SA © Research Institute Senckenberg

[Hyptis suaveolens](#) (L.) Kuntze .

- sùý . "herb sp.".



(CC) BY © Jeff Heath and the Dogon and Bangime
Languages Project



(CC) BY © Jeff Heath and the Dogon and Bangime
Languages Project



(CC) BY © Jeff Heath and the Dogon and Bangime
Languages Project

Leucas martinicensis (Jacq.) R.Br. .

- òm-kèrú . "herb sp."
- "mosquito-grass" . "herb sp."
- repels mosquitoes_ . "herb sp."



(CC) BY © Jeff Heath and the Dogon and Bangime
Languages Project



(CC) BY-NC © Bart Wursten



(CC) BY © Jeff Heath and the Dogon and Bangime
Languages Project

Ocimum americanum L. . Characteristics: herb; up to 50 cm tall; elongated leaves in clusters; pink to white flowers; .
([Burke 2007](#): 86)

- jèm-dàbà-ý . "bush sp."



(CC) BY © Jeff Heath and the Dogon and Bangime Languages Project



(CC) BY © Jeff Heath and the Dogon and Bangime Languages Project



(CC) BY © Jeff Heath and the Dogon and Bangime Languages Project

Family: Orobanchaceae

[*Striga hermonthica*](#) (Del.) Benth. .

- dó: . "herb sp."



(CC) BY-NC-SA © Research Institute Senckenberg



(CC) BY-NC-SA © Research Institute Senckenberg



(CC) BY-NC-SA © Delile, A.R., 1813. Description de l'Égypte

Family: Pedaliaceae

[*Ceratotheca sesamoides*](#) Endl. .

- p̄li-ỳ ḡunnó . "herb sp.". Lit. "sesame's slave".



(CC) BY © Jeff Heath and the Dogon and Bangime Languages Project



(CC) BY © Jeff Heath and the Dogon and Bangime Languages Project



(CC) BY © Jeff Heath and the Dogon and Bangime Languages Project

Sesamum alatum P. Thonn. .

- [ànà-kùm] -pòfi-ý . "wild sesame (herb)".



(CC) BY-NC © Bart Wursten



(CC) BY-NC © Bart Wursten



(CC) BY-NC © Bart Wursten

Sesamum indicum .

- pòfi-ý . "sesame".



(CC) BY-NC-SA © Research Institute Senckenberg



(CC) BY-NC-SA © Research Institute Senckenberg



(CC) MARK © Franz Eugen Köhler, Köhler's Medizinal-Pflanzen

Family: Plantaginaceae

[Scoparia dulcis](#) L. .

- tím-tím . "herb sp."



(CC) BY © India Biodiversity Portal



(CC) BY-NC-SA © Research Institute Senckenberg



(CC) BY-SA ©

Order: Magnoliales

Family: Annonaceae

[Annona senegalensis](#) Pers. .

- gòndò-gònjó . "tree sp."



(CC) BY-SA © Ton Rulkens



(CC) BY © Jeff Heath and the Dogon and Bangime Languages Project

[Annona squamosa](#) L. .

- ànàsààrà-à:gúlú . "tree sp. (sugar-apple)".



(CC) BY © Jeff Heath and the Dogon and Bangime Languages Project



(CC) BY © Jeff Heath and the Dogon and Bangime Languages Project

Hexalobus monopetalus (A. Rich.) Engl. & Diels .

- gònjó . "tree sp."



(CC) BY © Jeff Heath and the Dogon and Bangime Languages Project



(CC) BY © Jeff Heath and the Dogon and Bangime Languages Project



(CC) BY © Jeff Heath and the Dogon and Bangime Languages Project

Xylopi aethiopica (Dunal) A. Rich. .

- pèèdíjé . "grains of Selim".



(CC) BY-NC-SA © TanzaniaPlantCollaboration



(CC) BY ©



(CC) BY-NC-SA © TanzaniaPlantCollaboration

Order: Malpighiales

Family: Chrysobalanaceae

[Neocarya macrophylla](#) (Sabine) Prance .

- kùŋ-kùnjǎy . "tree sp."



(CC) BY © Jeff Heath and the Dogon and Bangime Languages Project



(CC) BY © Jeff Heath and the Dogon and Bangime Languages Project



(CC) BY-SA ©

Family: Euphorbiaceae

[Euphorbia balsamifera](#) Aiton .

- jɪŋná . "balsam-spurge (shrub)"



(CC) BY © Jeff Heath and the Dogon and Bangime Languages Project



(CC) BY © Jeff Heath and the Dogon and Bangime Languages Project



(CC) BY-NC © Edinburgh!

[Euphorbia hirta](#) L. .

- jènsènè-kèrú . "erect herb sp." . Lit. "foot.wound-grass".



(CC) BY © Jeff Heath and the Dogon and Bangime Languages Project



(CC) BY © Jeff Heath and the Dogon and Bangime Languages Project



(CC) BY © India Biodiversity Portal

[Euphorbia sudanica](#) A.Chev. .

- **tééjú** . "thorny bush".



(CC) BY © Jeff Heath and the Dogon and Bangime Languages Project



(CC) BY © Jeff Heath and the Dogon and Bangime Languages Project



(CC) BY © Jeff Heath and the Dogon and Bangime Languages Project

[Manihot esculenta](#) Crantz .

- **bànanjú-tànná** . "cassava, manioc".



(CC) BY © Jeff Heath and the Dogon and Bangime
Languages Project



(CC) BY-SA © Ton Rulkens



(CC) BY © Forest & Kim Starr

[Ricinus communis](#) L. .

- **ḏīḏīmè-ý** . "shrub sp."



(CC) BY-SA © Andreas Fröh (Andel)



(CC) BY-SA © H. Zell



(CC) BY © Jeff Heath and the Dogon and Bangime
Languages Project

Order: Malvales

Family: Malvaceae

[Adansonia digitata](#) L. .

- **ḏró** . "baobab tree".

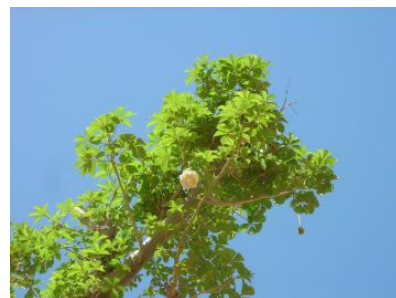
<http://tsammalex.clld.org/>



Public Domain by unknown



(CC) BY © Jeff Heath and the Dogon and Bangime
Languages Project



(CC) BY © Jeff Heath and the Dogon and Bangime
Languages Project

Ceiba pentandra (L.) Gaertn. .

- **dùrùú** . "tree sp."



(CC) BY © Jeff Heath and the Dogon and Bangime
Languages Project



(CC) BY-NC-SA © Reinaldo Aguilar

Corchorus Patrity, 1965 .

- **j̀̀g̀̀ú-m̀̀ǹ̀ǹ̀** . "herb sp."



(CC) BY-NC-SA © Research Institute Senckenberg



(CC) BY-NC © Bart Wursten

[Gossypium hirsutum](#) L. .

- **kèrrié** . "cotton".



(CC) BY-NC-SA © Arthur Chapman



(CC) BY-NC © Bart Wursten



(CC) BY © Jeff Heath and the Dogon and Bangime Languages Project

[Grewia villosa](#) Willd. .

- **òdòrò-bòmmó** . "shrub sp.".



(CC) BY-NC © Bart Wursten



(CC) BY © Jeff Heath and the Dogon and Bangime Languages Project



(CC) BY-NC © Bart Wursten

[Hibiscus cannabinus](#) L. .

- **èndè-kùmò dò:nú** . "erect herb sp.".



(CC) BY © Jeff Heath and the Dogon and Bangime Languages Project



(CC) BY © Jeff Heath and the Dogon and Bangime Languages Project



(CC) BY © Jeff Heath and the Dogon and Bangime Languages Project

[Hibiscus longisepalus](#) Hochr. .

- yàgàr-kùmmó . "bush sp."



(CC) BY © Jeff Heath and the Dogon and Bangime Languages Project



(CC) BY © Jeff Heath and the Dogon and Bangime Languages Project



(CC) BY © Jeff Heath and the Dogon and Bangime Languages Project

[Hibiscus ovalifolius](#) (Forssk.) Vahl .

- òdò-kólbó . "bush sp."



(CC) BY © Jeff Heath and the Dogon and Bangime Languages Project



(CC) BY © Jeff Heath and the Dogon and Bangime Languages Project

[Hibiscus sabdariffa](#) L. .

- ànjì-ý . "roselle".
- dò:nú . "roselle".
- ànjì-ý . "roselle variety with small greenish-white fruits".
- ànjì-ỳ ków . "roselle variety with large greenish-white fruits".
- ànjì-ỳ kòw bánú . "roselle variety with large red fruits".
- ànjì-ỳ ków . "roselle varieties with large fruits (red and green types)".



(CC) BY © Jeff Heath and the Dogon and Bangime
Languages Project



(CC) BY-NC-SA © Marie Fourdrigniez



(CC) BY © Jeff Heath and the Dogon and Bangime
Languages Project

[Sida abutifolia](#) Mill. .

- sèmbú . "bush sp."



(CC) BY-NC © inaturalist



(CC) BY-NC © Picasa



(CC) BY © Jeff Heath and the Dogon and Bangime
Languages Project

[Sida cordifolia](#) .

- yúú-bàràmbày . "herb sp."



(CC) BY-NC © Bart Wursten



(CC) BY © India Biodiversity Portal



(CC) BY-NC-SA © Sharpj99

[Waltheria indica](#) L. .

- sèmbú . "bush sp."



(CC) BY © Jeff Heath and the Dogon and Bangime
Languages Project



(CC) BY © Jeff Heath and the Dogon and Bangime
Languages Project



(CC) BY © Jeff Heath and the Dogon and Bangime
Languages Project

Order: Myrtales

Family: Lythraceae

[Lawsonia inermis](#) L. .

- púddù . "henna bush".



(CC) BY © Jeff Heath and the Dogon and Bangime
Languages Project

Family: Myrtaceae

[Eucalyptus astringens](#) (Maiden) Maiden .

- s̄nwàà t̄imè-ý . "eucalyptus tree".

[Psidium guajava](#) .

- b̄yà:kí . "guava".



(CC) BY ©



(CC) BY © Forest & Kim Starr



(CC) MARK © Galapagos Islands.

Order: Nymphaeales

Family: Nymphaeaceae

[Nymphaea](#) .

- kùùlú . "water lily (all spp.)".



(CC) BY-NC-SA © Mary Keim



(CC) BY-NC-SA © Research Institute Senckenberg



(CC) BY-NC © Bart Wursten

Order: Piperales

Family: Piperaceae

[Piper guineense](#) Schum. & Thonn. .

- péépè . "African black pepper".



(CC) BY-NC © Scamperdale



(CC) BY-NC © International Institute of Tropical
Agriculture



(CC) BY-NC © Scamperdale

Order: Rosales

Family: Moraceae

[Ficus sycomorus](#) .

- gàá . "fig tree sp."



(CC) BY © Jeff Heath and the Dogon and Bangime
Languages Project



(CC) BY © Jeff Heath and the Dogon and Bangime
Languages Project



(CC) BY © Jeff Heath and the Dogon and Bangime
Languages Project

Family: Rhamnaceae

[Ziziphus mauritiana](#) Lam. .

- òlöm . "jujube (shrub)".



(CC) BY-SA ©



(CC) BY © Jeff Heath and the Dogon and Bangime Languages Project



(CC) BY-NC © Bart Wursten

Order: Santalales

Family: Ximeniaceae

[Ximenia americana](#) L. .

- àntăm . "thorny shrub sp."



(CC) BY-NC-SA © Research Institute Senckenberg



(CC) BY © Jeff Heath and the Dogon and Bangime Languages Project



(CC) BY © Jeff Heath and the Dogon and Bangime Languages Project

Order: Sapindales

Family: Anacardiaceae

[Anacardium occidentale](#) L. .

- sòmó . "cashew tree (planted)".



(CC) BY © Jeff Heath and the Dogon and Bangime Languages Project

[Mangifera indica](#) L. .

- **màṅkóró ~ màṅgóró** . "mango".



(CC) BY-NC-SA © Research Institute Senckenberg



(CC) BY © Jeff Heath and the Dogon and Bangime Languages Project



(CC) BY-SA ©

[Sclerocarya birrea](#) .

- **ḃīyé** . "tree sp.".



(CC) BY © Jeff Heath and the Dogon and Bangime Languages Project



(CC) BY-NC-SA © Research Institute Senckenberg



(CC) BY © Jeff Heath and the Dogon and Bangime Languages Project

[Spondias mombin](#) Jacq. .

- **è:níyé** . "tree sp.".



(CC) BY © Jeff Heath and the Dogon and Bangime
Languages Project



(CC) BY-NC-SA © Research Institute Senckenberg

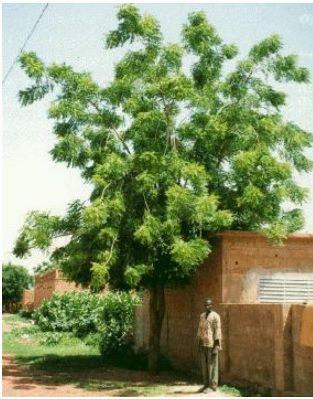


(CC) BY © Jeff Heath and the Dogon and Bangime
Languages Project

Family: Meliaceae

[Azadirachta indica](#) A. Juss. .

- **g̀̀nj̀̀j̀̀** . "neem tree".



(CC) BY © Jeff Heath and the Dogon and Bangime
Languages Project



(CC) BY © Jeff Heath and the Dogon and Bangime
Languages Project

[Khaya senegalensis](#) (Desv.) A. Juss. .

- **p̀̀l̀̀l̀̀** . "tree sp".



(CC) BY © Jeff Heath and the Dogon and Bangime Languages Project



(CC) BY-NC-SA © Research Institute Senckenberg



(CC) BY © Jeff Heath and the Dogon and Bangime Languages Project

Family: Rutaceae

Citrus limon (L.) Burm. f. .

- **lèmbúrú** . "lemon".



(CC) PUBLICDOMAIN © Pavel Buršfk



(CC) BY-SA ©



(CC) BY-SA ©

Citrus sinensis L. .

- **lèmbùrù-báá** . "orange".



(CC) BY-SA © Mifa



(CC) BY © Jeff Heath and the Dogon and Bangime Languages Project



(CC) BY © Jeff Heath and the Dogon and Bangime Languages Project

Vepris heterophylla (Engl.) Letouzey .

- **pòndù-kògó** . "kinkeliba shrub".



(CC) BY-NC © Philippe Birnbaum



(CC) BY-NC © Philippe Birnbaum



(CC) BY-NC © Philippe Birnbaum

Family: Sapindaceae

[Cardiospermum halicacabum](#) L. .

- **tàmààtù-kèrú** . "herb sp."



(CC) BY-NC-SA © Valter Jacinto



(CC) BY © Jeff Heath and the Dogon and Bangime
Languages Project

[Lepisanthes senegalensis](#) (Poir.) Leenhouts .

- **dénné** . "tree sp. "



(CC) BY © Jeff Heath and the Dogon and Bangime
Languages Project



(CC) BY © Jeff Heath and the Dogon and Bangime
Languages Project



(CC) BY © Jeff Heath and the Dogon and Bangime
Languages Project

Order: Solanales

Family: Convolvulaceae

Evolvulus alsinoides (L.) L. . Characteristics: herb with perennial rootstock; up to 20 cm tall; slender, hairy leaves; blue flowers with fused petals. Biotope: sandy soil. ([Burke 2007](#): 84)

- **tín-tím** . "herb sp."



(CC) BY-NC-SA © Research Institute Senckenberg



(CC) BY © India Biodiversity Portal



(CC) BY © Jeff Heath and the Dogon and Bangime Languages Project

Ipomoea aquatica Forsskal .

- **nòlóliyèm** . "trailing vine sp."



(CC) BY © Jeff Heath and the Dogon and Bangime Languages Project



(CC) BY © Jeff Heath and the Dogon and Bangime Languages Project



(CC) BY © Jeff Heath and the Dogon and Bangime Languages Project

Ipomoea asarifolia (Desr.) Roem. & Schult. .

- **nòlóliyèm** . "trailing vine sp."



(CC) BY © Jeff Heath and the Dogon and Bangime Languages Project



(CC) BY-NC-SA © Research Institute Senckenberg



(CC) BY © Jeff Heath and the Dogon and Bangime Languages Project

Ipomoea batatas (L.) Lam. .

- **bà̀nà̀ḡkù̀ b̀ù̀mbó̀** . "sweet potato".



(CC) BY-SA ©



CC-Zero ©



(CC) BY-SA ©

Ipomoea obscura (L.) Ker Gawler .

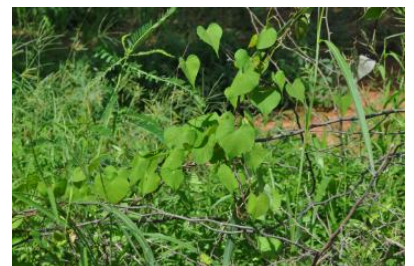
- **t̀ó̀ndó̀** . "liana sp."
- **t̀ò̀ndò̀-j̀ò̀mmó̀** . "liana sp."



(CC) BY © Jeff Heath and the Dogon and Bangime Languages Project



(CC) BY © Jeff Heath and the Dogon and Bangime Languages Project



(CC) BY © Jeff Heath and the Dogon and Bangime Languages Project

Jacquemontia tamnifolia (L.) Griseb. .

- **k̀ò̀ndò̀-b̀è̀lú̀** . "sprawling herb sp."



(CC) BY © Jeff Heath and the Dogon and Bangime Languages Project



(CC) BY © Jeff Heath and the Dogon and Bangime Languages Project

Merremia aegyptia (L.) Urban .

- **mèlègèm-kùùlú** . "trailing vine sp.". Lit. "djinn-water.lily".



(CC) BY © Forest & Kim Starr



(CC) BY © Jeff Heath and the Dogon and Bangime Languages Project



(CC) BY © Forest & Kim Starr

Family: Solanaceae

Nicotiana (H.L. Clark, 1917) .

- **tábé** . "tobacco".



(CC) BY ©



(CC) BY-SA ©



(CC) BY-SA ©

[Nicotiana rustica](#) L. .

- **tábé** . "African tobacco".



(CC) BY-SA © Magnus Manske



(CC) BY-SA © C T Johansson



(CC) BY-SA © Tubifex

[Nicotiana tabacum](#) L. .

- **tàbè-wàlàgá** . "tobacco".



(CC) BY-SA ©



(CC) BY-SA © Raffi Kojian



(CC) BY-SA ©

[Physalis](#) Chesher, 1968 .

- **tàmààtù-kèrú** . "herb sp.".



(CC) BY-NC-SA © Maggie W2



(CC) BY © Forest & Kim Starr



(CC) BY ©

[Solanum aethiopicum](#) L. .

- **kélbè** . "African eggplant (smooth succulent variety)".
- **tòmmò-kélbè** . "African eggplant (hard wrinkled variety)".



(CC) BY-NC-SA © Research Institute Senckenberg



(CC) BY-NC-SA © Steven Severinghaus



(CC) MARK © Wikimedia Commons

[Solanum incanum](#) L. . Characteristics: shrub, 80cm tall, many branches that are covered with hairs and spines, large lobed leaves, purplish-white flowers, fruit turns from green to yellow when ripe. Biotope: dry river course. ([Van Rooyen et al. 2001](#): 76)

- **ènjè kélbè** . "thorny bush sp.". Lit. "chicken-chicken-eggplant".



(CC) BY © Jeff Heath and the Dogon and Bangime Languages Project



(CC) BY-NC © Bart Wursten



(CC) BY © Jeff Heath and the Dogon and Bangime Languages Project

Family: Sphenocleaceae

[Sphenoclea zeylanica](#) Gaertn. .

- **dí: kèrù** . "herb sp.".



(CC) BY © Jeff Heath and the Dogon and Bangime Languages Project



(CC) BY-SA ©



Public Domain by

Order: Vitales

Family: Vitaceae

[Cissus quadrangularis](#) L. .

- ስጃጎ-ጎጎ:ጎጎ . "liana sp.". Lit. "Hogon-scratch".



(CC) BY-SA © Marco Schmidt



(CC) BY © Jeff Heath and the Dogon and Bangime Languages Project



(CC) BY © Jeff Heath and the Dogon and Bangime Languages Project

Order: Zygophyllales

Family: Zygophyllaceae

[Balanites aegyptiacus](#) .

- ጠጠጠጠ . "wild date tree".



(CC) BY © Jeff Heath and the Dogon and Bangime
Languages Project



(CC) BY © Jeff Heath and the Dogon and Bangime
Languages Project



(CC) BY © Jeff Heath and the Dogon and Bangime
Languages Project

[*Tribulus terrestris*](#) L. . Characteristics: creeping growth, yellow flowers, flower 1 cm in diameter, soft-haired leaves, woody, sharp, spiny fruits that can puncture animals' hoofs, bare feet and bicycle tyres. ([Van der Walt and le Riche 1999](#): 109)

- **nàànáá** . "herb sp."



(CC) BY © Jeff Heath and the Dogon and Bangime
Languages Project



(CC) BY-SA © Stan Shebs



(CC) BY-SA © Stan Shebs

Class: Polypodiopsida

Order: Salviniales

Family: Marsileaceae

[*Marsilea minuta*](#) .

- **àwá** [also Pistia] . "fern sp."



(CC) PUBLICDOMAIN © Michael Kesl



(CC) BY-NC-SA © Research Institute Senckenberg



(CC) BY-NC © Bart Wursten

Class: other

Order: Lamiales

Family: Acanthaceae

[Monechma ndellense](#) Lindau .

- méléjú . "herb sp."



(CC) BY © Jeff Heath and the Dogon and Bangime Languages Project



(CC) BY-NC-SA © Research Institute Senckenberg



(CC) BY-NC-SA © Research Institute Senckenberg

Kingdom: Viridiplantae

Phylum: Streptophyta

Class: Magnoliopsida

Order: Brassicales

Family: Capparaceae

Boscia angustifolia A. Rich. .

- **sàà-sélú** . "tree sp."
- **ùwàlá** . "tree sp."



(CC) BY © Jeff Heath and the Dogon and Bangime
Languages Project



(CC) BY © Jeff Heath and the Dogon and Bangime
Languages Project



(CC) BY © Jeff Heath and the Dogon and Bangime
Languages Project

Maerua angolensis .

- **kókólú** . "tree sp."
- **kòkòl-ná:** . "tree sp."



(CC) BY-NC © Bart Wursten



(CC) BY-NC © Bart Wursten



(CC) BY © Jeff Heath and the Dogon and Bangime
Languages Project

Order: Caryophyllales

Family: Amaranthaceae

Pandiaka angustifolia (Vahl) Hepper .

- **mèlègèm-jǐgíríyé** . "herb sp."



(CC) BY © Jeff Heath and the Dogon and Bangime Languages Project



(CC) BY © Jeff Heath and the Dogon and Bangime Languages Project



(CC) BY © Jeff Heath and the Dogon and Bangime Languages Project

Pupalia lappacea (L.) Juss. . Characteristics: erect or sprawling herb; up to 90 cm tall; stems with multiple opposite branches that grow from nodes; branches are 4-angled; the mature inflorescence is up to 50 cm long and has green flowers; fruit is a capsule with shiny brown seeds. Biotope: sandy soil. ([Van Rooyen et al. 2001](#): 156)

- **ăy yògù-mà-yògù** . "herb sp."



(CC) BY-NC © Bart Wursten



(CC) BY-NC © Bart Wursten



Public Domain by Christfried Naumann

Family: Portulacaceae

Portulaca foliosa Ker-Gawl. .

- **gènsènè-kèrú** . "herb sp."



(CC) BY © Jeff Heath and the Dogon and Bangime Languages Project



(CC) BY © Jeff Heath and the Dogon and Bangime Languages Project



(CC) BY © Jeff Heath and the Dogon and Bangime Languages Project

Order: Celastrales

Family: Celastraceae

[*Gymnosporia senegalensis*](#) .

- **dògó sòbò** . "tree sp. with long thorns".



(CC) BY © Jeff Heath and the Dogon and Bangime Languages Project



(CC) BY-NC-SA © Research Institute Senckenberg



(CC) BY © Jeff Heath and the Dogon and Bangime Languages Project

[*Loeseneriella africana*](#) (Willd.) R. Wilczek .

- **jògú-mánà** . "woody liana sp.".



(CC) BY © Jeff Heath and the Dogon and Bangime
Languages Project



(CC) BY-NC-SA © Research Institute Senckenberg



(CC) BY © Jeff Heath and the Dogon and Bangime
Languages Project

Order: Cucurbitales

Family: Cucurbitaceae

[Cucumis prophetarum prophetarum](#) .

- ày-jògó . "inedible wild melon sp."



(CC) BY © Jeff Heath and the Dogon and Bangime
Languages Project



(CC) BY © Jeff Heath and the Dogon and Bangime
Languages Project



(CC) BY © Jeff Heath and the Dogon and Bangime
Languages Project

[Cucumis pustulatus](#) Hook. f. .

- ènjè-kélbé . "horned melon".



(CC) BY © Jeff Heath and the Dogon and Bangime
Languages Project



(CC) BY © Jeff Heath and the Dogon and Bangime
Languages Project



(CC) BY © Jeff Heath and the Dogon and Bangime
Languages Project

Order: Fabales

Family: Polygalaceae

[Securidaca longepedunculata](#) .

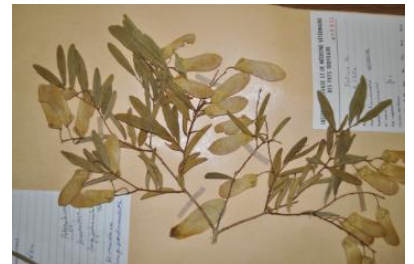
- **tóró** . "tree sp."



(CC) BY © Jeff Heath and the Dogon and Bangime
Languages Project



(CC) BY © Jeff Heath and the Dogon and Bangime
Languages Project



(CC) BY © Jeff Heath and the Dogon and Bangime
Languages Project

Order: Gentianales

Family: Apocynaceae

[Caralluma adscendens](#) (Roxb.) Haw. .

- **gàmmà-dúló** . "succulent plant sp."
- **ĩsè-ĩnú** . "succulent plant sp."



(CC) BY © Jeff Heath and the Dogon and Bangime Languages Project



(CC) BY © Jeff Heath and the Dogon and Bangime Languages Project



(CC) BY © Jeff Heath and the Dogon and Bangime Languages Project

[Glossonema boveanum](#) .

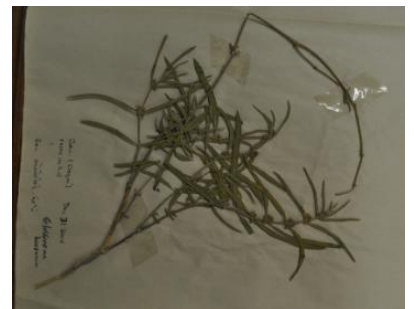
- **dògò-nólú** [also *Xysmalobium*] . "herb sp."



(CC) BY © Jeff Heath and the Dogon and Bangime Languages Project



(CC) BY © Jeff Heath and the Dogon and Bangime Languages Project



(CC) BY © Jeff Heath and the Dogon and Bangime Languages Project

[Leptadenia hastata](#) .

- **kàmàṅkòlò** . "vine sp."



(CC) BY-NC-SA © Research Institute Senckenberg



(CC) BY © Jeff Heath and the Dogon and Bangime
Languages Project



(CC) BY © Jeff Heath and the Dogon and Bangime
Languages Project

[Leptadenia pyrotechnica](#) (Forssk.) Decne. .

- **kàmàṅkòlò àná** . "bush sp."



(CC) BY © Jeff Heath and the Dogon and Bangime
Languages Project



(CC) BY-NC-SA © Bibliotheca Alexandrina - EOL Ar



(CC) BY-SA ©

[Pergularia tomentosa](#) L. .

- **kòlòfiyèm** . "bush sp."



(CC) BY © Jeff Heath and the Dogon and Bangime
Languages Project



(CC) BY © Jeff Heath and the Dogon and Bangime
Languages Project



(CC) BY © Jeff Heath and the Dogon and Bangime
Languages Project

[Xysmalobium heudelotianum](#) N. E. Br. .

- **dògò-nólú** [also **Glossonema**] . "trailing vine sp."



(CC) BY-NC © Rob Burrett



(CC) BY-NC © Rob Burrett



(CC) BY © Jeff Heath and the Dogon and Bangime Languages Project

Order: Lamiales

Family: Acanthaceae

[Peristrophe paniculata](#) (Forssk.) I.Darbysh. .

- **kèrù-jìgíríyè** . "herb sp."



(CC) BY ©



(CC) BY ©



(CC) BY © Jeff Heath and the Dogon and Bangime Languages Project

Family: Bignoniaceae

[Stereospermum kunthianum](#) Cham. .

- **pò-pöllò** . "tree sp."



(CC) BY-NC © Bart Wursten



(CC) BY-NC © Bart Wursten



(CC) BY © Jeff Heath and the Dogon and Bangime Languages Project

Family: Lamiaceae

[Vitex doniana](#) Sweet .

- ànà-mùy^ń . "tree sp."
- ànà-mùy^ń ná: . "tree sp."



(CC) BY © Jeff Heath and the Dogon and Bangime Languages Project



(CC) BY-NC-SA © Research Institute Senckenberg



(CC) BY © Jeff Heath and the Dogon and Bangime Languages Project

Family: Pedaliaceae

[Rogeria adenophylla](#) .

- kèrù- [gúbó-gúbó] . "tall herb sp."



(CC) BY © Jeff Heath and the Dogon and Bangime
Languages Project



(CC) BY © Jeff Heath and the Dogon and Bangime
Languages Project



(CC) BY © Jeff Heath and the Dogon and Bangime
Languages Project

Order: Malvales

Family: Malvaceae

[Gossypium anomalum](#) .

- **kèrɲè ná:** . "cotton".



(CC) BY © Jeff Heath and the Dogon and Bangime
Languages Project

[Grewia bicolor](#) Juss. .

- **yòdrù náá** . "shrub sp.".



(CC) BY © Jeff Heath and the Dogon and Bangime Languages Project



(CC) BY © Jeff Heath and the Dogon and Bangime Languages Project



(CC) BY © Jeff Heath and the Dogon and Bangime Languages Project

Order: Myrtales

Family: Combretaceae

[Anogeissus leiocarpa](#) (DC.) Guill. & Perr. .

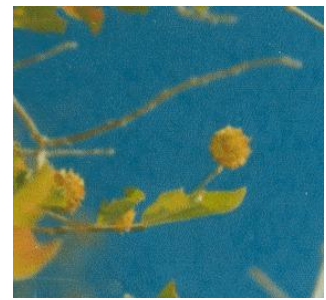
- **sígélú** . "tree sp."
- **jóy**" . "tree sp."



(CC) BY © Jeff Heath and the Dogon and Bangime Languages Project



(CC) BY © Jeff Heath and the Dogon and Bangime Languages Project



(CC) BY © Jeff Heath and the Dogon and Bangime Languages Project

[Combretum adenogonium](#) Steud. ex A. Rich. .

- **bà̀nà̀nkìlè bà̀nì-ý** . "tree sp."



(CC) BY © Jeff Heath and the Dogon and Bangime Languages Project



(CC) BY © Jeff Heath and the Dogon and Bangime Languages Project



(CC) BY © Jeff Heath and the Dogon and Bangime Languages Project

[Combretum collinum hypopilinum](#) .

- **bànaṅkìlè gúbó-gúbó** . "tree sp."



(CC) BY © Jeff Heath and the Dogon and Bangime Languages Project



(CC) BY © Jeff Heath and the Dogon and Bangime Languages Project



(CC) BY © Jeff Heath and the Dogon and Bangime Languages Project

[Combretum glutinosum](#) Perr. ex DC. .

- **bànaṅkìlé** . "tree sp."



(CC) BY © Jeff Heath and the Dogon and Bangime Languages Project



(CC) BY © Jeff Heath and the Dogon and Bangime Languages Project



(CC) BY © Jeff Heath and the Dogon and Bangime Languages Project

[Combretum micranthum](#) G. Don .

- **kùyó** . "shrub sp."



(CC) BY © Jeff Heath and the Dogon and Bangime Languages Project



(CC) BY © Jeff Heath and the Dogon and Bangime Languages Project



(CC) BY © Jeff Heath and the Dogon and Bangime Languages Project

[Guiera senegalensis](#) J.F.Gmel. .

- **gòbòró** . "shrub sp."



(CC) BY © Jeff Heath and the Dogon and Bangime Languages Project



(CC) BY © Jeff Heath and the Dogon and Bangime Languages Project



(CC) BY © Jeff Heath and the Dogon and Bangime Languages Project

Order: Rosales

Family: Moraceae

[Ficus abutilifolia](#) (Miq.) Miq. .

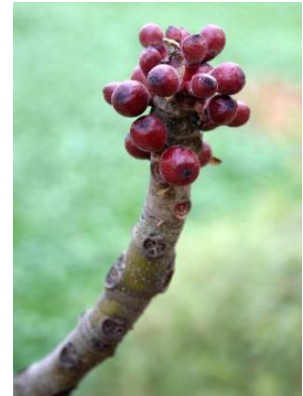
- **kùmbàá** . "fig tree sp."



(CC) BY © Jeff Heath and the Dogon and Bangime Languages Project



(CC) BY © Jeff Heath and the Dogon and Bangime Languages Project



(CC) BY-NC © Bart Wursten

[Ficus platyphylla](#) Del. .

- **kùmbú** . "fig tree sp."



(CC) BY © Jeff Heath and the Dogon and Bangime Languages Project



(CC) BY © Jeff Heath and the Dogon and Bangime Languages Project



(CC) BY © Jeff Heath and the Dogon and Bangime Languages Project

[Ficus sur](#) Forssk. .

- **gàà kùyó** . "fig tree sp."



(CC) BY © Jeff Heath and the Dogon and Bangime
Languages Project



(CC) BY © Jeff Heath and the Dogon and Bangime
Languages Project



(CC) BY © Jeff Heath and the Dogon and Bangime
Languages Project

Family: Rhamnaceae

[*Ziziphus mucronata*](#) . Characteristics: 2 - 5 m tall, yellowish-green flowers, greyish-brown bark, thorns in pairs.
Biotope: river course, arid area. ([Carruthers \(eds.\) 2000](#): 263; [Van Rooyen et al. 2001](#): 34)

- **tàràà-òlǒm** . "shrub sp. (false jujube)".



Public Domain by Christfried Naumann



(CC) BY-NC-SA © Research Institute Senckenberg



Public Domain by Gertrud Boden

Order: Sapindales

Family: Burseraceae

[*Commiphora africana*](#) (Rich.) Engl. .

- **gàdùbá** . "bdellium (shrub)".



(CC) BY © Jeff Heath and the Dogon and Bangime
Languages Project



(CC) BY © Jeff Heath and the Dogon and Bangime
Languages Project



(CC) BY © Jeff Heath and the Dogon and Bangime
Languages Project

[Commiphora pedunculata](#) (Kotschy & Peyr.) Engl. .

- gādùbà-gùnnó . "shrub sp."



(CC) BY © Jeff Heath and the Dogon and Bangime
Languages Project



(CC) BY © Jeff Heath and the Dogon and Bangime
Languages Project

Order: Solanales

Family: Solanaceae

[Capsicum frutescens](#) L. .

- pèréndè . "chili pepper".



(CC) BY-NC-SA © Marco Schmidt



(CC) BY © Jeff Heath and the Dogon and Bangime Languages Project

Order: Vitales

Family: Vitaceae

[Ampelocissus africana](#) (Lour.) Merrill .

- ènè ġĩrĩ-m sáá . "liana sp.". Lit. "goatherds-wild.grape".



(CC) BY © Jeff Heath and the Dogon and Bangime Languages Project



(CC) BY © Jeff Heath and the Dogon and Bangime Languages Project



(CC) BY © Jeff Heath and the Dogon and Bangime Languages Project

Class: other

Order: Fabales

Family: Fabaceae

[Senegalia ataxacantha](#) .

- wòlò pílú . "scrub acacia sp. (often liana)".



(CC) BY © Jeff Heath and the Dogon and Bangime
Languages Project



(CC) BY © Jeff Heath and the Dogon and Bangime
Languages Project



(CC) BY © Jeff Heath and the Dogon and Bangime
Languages Project

[Senegalia macrostachya](#) .

- wòlò pèrèndè-ý . "acacia sp."



(CC) BY © Jeff Heath and the Dogon and Bangime
Languages Project



(CC) BY © Jeff Heath and the Dogon and Bangime
Languages Project



(CC) BY © Jeff Heath and the Dogon and Bangime
Languages Project

[Vachellia sieberiana](#) .

- màkà-bà:lá . "acacia sp."



(CC) BY © Jeff Heath and the Dogon and Bangime
Languages Project



(CC) BY © Jeff Heath and the Dogon and Bangime
Languages Project



(CC) BY © Jeff Heath and the Dogon and Bangime
Languages Project

Order: Polypodiales

Family: Pteridaceae

[Actiniopteris radiata](#)

- pèndù-gúbó . "fern sp."



(CC) BY © Jeff Heath and the Dogon and Bangime
Languages Project



(CC) BY © Jeff Heath and the Dogon and Bangime
Languages Project



(CC) BY © Jeff Heath and the Dogon and Bangime
Languages Project