

Najamba names for Plants and Animals

edited by Jeffrey Heath and Steven Moran

This document was created from [Tsammalex](http://tsammalex.clld.org) on 2015-05-13.

Tsammalex is published under a Creative Commons Attribution 4.0 International License and should be cited as

*Christfried Naumann & Steven Moran & Guillaume Segerer & Robert Forkel (eds.)
2015. Tsammalex: A lexical database on plants and animals. Leipzig: Max Planck
Institute for Evolutionary Anthropology. (Available online at
<http://tsammalex.clld.org>, Accessed on 2015-05-13.)*

A full list of contributors is available at <http://tsammalex.clld.org/contributors>

The list of references cited in this document is available at
<http://tsammalex.clld.org/sources>

Kingdom: Animalia

Phylum: Arthropoda

Class: Arachnida

Order: Ixodida

Family: Ixodidae

[*Rhipicephalus turanicus*](#) Pomerantsev, 1936 .

- kóbíjé\\kóbíjé-mbó . "small tick sp."

Order: Prostigmata

Family: Leeuwenhoekiidae

[*Dinothrombium tinctorium*](#) .

- sâ:-bánè\\sâ:- [bân-bò] . "small scarlet-red velvet mite that emerges in fields after rains".



(CC) BY © Jeff Heath and the Dogon and Bangime
Languages Project



(CC) BY © Jeff Heath and the Dogon and Bangime
Languages Project

Order: Solifugae

Family: Galeodidae

[*Galeodes olivieri*](#) Simon, 1879 .

- àjà-tálé\\àjà-tál-mbó . "wind scorpion, sun scorpion". Lit. "Adia.village-hunter".



(CC) BY © Jeff Heath and the Dogon and Bangime Languages Project



(CC) BY © Jeff Heath and the Dogon and Bangime Languages Project



(CC) BY © Jeff Heath and the Dogon and Bangime Languages Project

Class: Chilopoda

Order: Scolopendromorpha

Family: Scolopendridae

[Scolopendra](#) .

- yà-sègí-kèrè-gírà . "large biting centipede (scolopender)".
- yà-sègí: kèrè-giyà . "large biting centipede (scolopender)".



(CC) BY © Sam Fraser-Smith



(CC) BY-SA © Matt Reinbold



(CC) BY © Jeff Heath and the Dogon and Bangime Languages Project

Class: Diplopoda

Order: Spirostreptida

Family: Spirostreptidae

[Archispirostreptus](#) .

- gwà:njìlè gémè\gémè-mbò . "giant millipede".



(CC) BY © Jeff Heath and the Dogon and Bangime Languages Project



(CC) BY © Jeff Heath and the Dogon and Bangime Languages Project

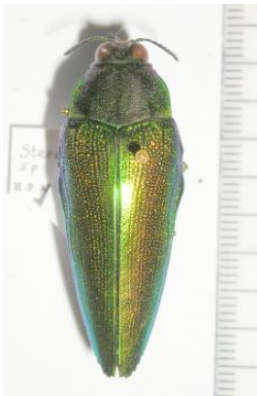
Class: Insecta

Order: Coleoptera

Family: Buprestidae

Steraspis .

- gǎngǎlé\\gǎngǎl-ŋgó . "buprestid beetle sp. (dark)".
- swâ: gǎngǎlè\\swâ: gǎngǎl-ŋgò . "buprestid beetle sp. (dark)".



(CC) BY © Jeff Heath and the Dogon and Bangime Languages Project



(CC) BY-NC-SA © Bernard DUPONT



(CC) BY-NC-SA © Bernard DUPONT

Family: Cetoniidae

Pachnoda cordata (Drury, 1773) .

- ólóndé = ólóndó\\ólóndú-mbó . "millet-eating cetonid beetle sp. (orange with large black blotches)".
- òlòndò ́:là\\́:là-mbò . "millet-eating cetonid beetle sp. (orange with large black blotches)".



(CC) BY © Jeff Heath and the Dogon and Bangime
Languages Project



(CC) BY © Jeff Heath and the Dogon and Bangime
Languages Project



(CC) BY-SA ©

Pachnoda interrupta (Olivier, 1789) .

- **ólóndé** = **ólóndó\ólóndú-mbó** . "sorghum chafer, grain-eating cetonid beetle sp. (blackish with dark orange marks)".
- **òlòndò ò:là\ò:là-mbò** . "sorghum chafer, grain-eating cetonid beetle sp. (blackish with dark orange marks)".



(CC) BY © Jeff Heath and the Dogon and Bangime
Languages Project



(CC) BY-SA © Udo Schmidt

Pachnoda marginata (Drury, 1773) .

- **ólóndé** = **ólóndó\ólóndú-mbó** . "cetonid beetle sp., dark with orange margin, in tree flowers".



(CC) BY © Jeff Heath and the Dogon and Bangime
Languages Project



(CC) BY-SA ©



(CC) BY © Jeff Heath and the Dogon and Bangime
Languages Project

[Rhabdotis sobrina](#) (Gory & Percheron, 1833) .

- òlòndò kèrà:\\kèrà:-mbò . "cetonid beetle sp., dark green with white streaks and spots, in sheath in ground (said to eat acacia flowers)".



(CC) BY © Jeff Heath and the Dogon and Bangime
Languages Project



(CC) BY © Jeff Heath and the Dogon and Bangime
Languages Project



(CC) BY © Biodiversity Heritage Library

Family: Chrysomelidae

[Callosobruchus maculatus](#) (Fabricius, 1775) .

- númbé kèkèbè\\kèkèbè-mbò . "cowpea weevil, tiny beetle that infests stored cow-peas".



(CC) BY © Jeff Heath and the Dogon and Bangime
Languages Project

Family: Dynastidae

[Phyllognathus burmeisteri](#) Arrow, 1911 .

- kèkèbè kèlè-gé:\\kèkèbè-mbò kèlè-gá: . "rhinoceros beetle (male with horn)".
- kèkèbè ðinàðinà . "rhinoceros beetle (male with horn)".



(CC) BY © Jeff Heath and the Dogon and Bangime
Languages Project



(CC) BY © Jeff Heath and the Dogon and Bangime
Languages Project

Family: Meloidae

[Cyaneolytta chopardi](#) .

- sábará kèjèmbèlè\\kèjèmbèl-mbò . "thin black blister beetle sp."

[Hycleus affinis](#) .

- sǎ:mè kèjèmbèlè . "small blister beetle, black with three irregular red-brown tranverse stripes on back".



(CC) BY © Jeff Heath and the Dogon and Bangime
Languages Project

[Zonitoschema gigantea](#) .

- yógé kèjèmbèlè . "large tan-colored blister beetle sp. that eats young millet heads".

Family: Scarabaeidae

[Pseudoprotactia stolata](#) .

- òlòndò gémè\gê:-mbò . "black and white cetonid beetle sp. (in spikes of millet)".

Order: Dermaptera

Family: Forficulidae

[Forficula senegalensis](#) Audinet-Serville, 1838 .

- sà-sògòlé\sà-sògũl-mbó . "earwig (insect with forked tail)". Lit. "Sa[mans name]-make.hole".



(CC) BY © Jeff Heath and the Dogon and Bangime
Languages Project



(CC) BY © Jeff Heath and the Dogon and Bangime
Languages Project

Order: Diptera

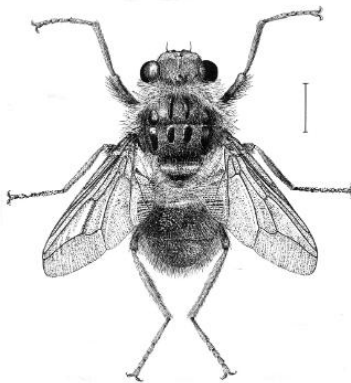
Family: Oestridae

[Hypoderma](#) .

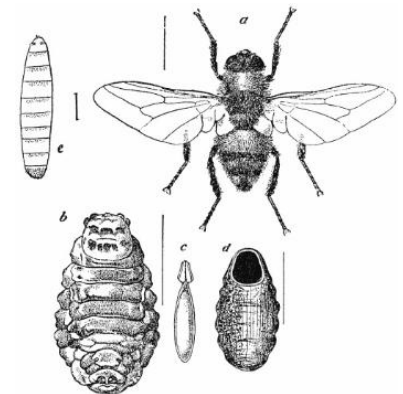
- **nàwó:** ɠ̀ɠ̀ɠ̀\g̀ɠ̀ɠ̀-**mbò** . "botfly sp. (adult mouthless, larva parasitic on cows)".



(CC) BY-SA ©



(CC) BY-NC-SA © National Museum of Natural History
Collections



PD US ©

Order: Hemiptera

Family: Belostomatidae

[Lethocerus](#) .

- **d̀l̀e:-** [èmbà-émbà] \d̀ l̀e:- [èmbà-émbà-**mbò**] . "giant water bug".



(CC) BY © Jeff Heath and the Dogon and Bangime
Languages Project



(CC) BY © Jeff Heath and the Dogon and Bangime
Languages Project



(CC) BY © Jeff Heath and the Dogon and Bangime
Languages Project

Family: Coreidae

[Anoplocnemis curvipes](#) .

- **númbé k̀k̀k̀b̀è** . "tip wilter bug (leaf-footed bug, legume-eating)".
- **d̀oné k̀k̀k̀b̀è** . "tip wilter bug (leaf-footed bug, legume-eating)".



(CC) BY © Jeff Heath and the Dogon and Bangime Languages Project

Order: Hymenoptera

Family: Apidae

Apis mellifera Linnaeus, 1758 .

- ḥ:mè\ḥ:-mbò . "honey bee".



(CC) BY-SA ©



(CC) BY © Treesha Duncan

Family: Eumenidae

Delta emarginatum (Linnaeus, 1758) .

- màlè gémè\màl-mbò gê:-mbò . "black mud wasp (mud-dauber)". Lit. "wasp black".



(CC) BY-SA ©



(CC) BY © Jeff Heath and the Dogon and Bangime Languages Project



(CC) BY-SA ©

Polistes .

- màlè-kéndè\màlè-kéndù-mbò . "brownish paper wasp sp. with yellow cross-bands, nest in leaves".



(CC) BY-NC © Biopix



(CC) BY © Miroslav Deml



(CC) BY-NC-SA © Flickr

Family: Formicidae

Camponotus maculatus (Fabricius, 1782) .

- **tóndé**\tóndé-mbó . "honey ant (yellow, fast-moving)".



(CC) BY-SA © April Nobile



(CC) BY © Jeff Heath and the Dogon and Bangime Languages Project

Messor .

- **tùgúnè**\tùgúnè-mbò . "large black grain-eating ant sp. in fields".



(CC) BY-NC-SA © April Nobile



(CC) BY © Jeff Heath and the Dogon and Bangime Languages Project



(CC) BY-NC-SA © April Nobile

Pachycondyla .

- **mè:mè gémè**\mè:mè-gê:-mbo . "stinging black ant sp.".

- **mè:mè-gimé** \\ **mè:mè- [gim-bó]** . "stinging black ant sp."



(CC) BY © Jeff Heath and the Dogon and Bangime Languages Project



(CC) BY-NC-SA © April Nobile



(CC) BY-NC-SA © April Nobile

Order: Lepidoptera

Family: Crambidae

[*Coniesta ignefusalis*](#) Hampson, 1919 .

- **sī-sī: kòlà-kólà** \\ **kòlà-kólà-mbò** . "millet stem-borer (snout-moth caterpillar in millet stem)".

Family: Sphingidae

[*Agrius convolvuli*](#) Linnaeus, 1758 .

- **sī-sī: [dùgú dombà]** . "large sleek sphingid butterfly chrysalis in plant roots or manure, dark brown with black spots on side, without feet".



(CC) BY © Jeff Heath and the Dogon and Bangime Languages Project

Order: Mantodea

Family: Eremiaphilidae

[*Eremiaphila reticulata*](#) .

- **òlòm-põ:jò** . "fat brown eremiaphilid mantis sp."

Order: Neuroptera

Family: Myrmeleontidae

[Lachlathetes furfuraceus](#) (Rambur, 1842) .

- **bèlà-dúmbú\\-dúmbú-mbó** . "ant lion sp. (adult) with colored wings".



(CC) BY © Jeff Heath and the Dogon and Bangime
Languages Project



(CC) BY © Jeff Heath and the Dogon and Bangime
Languages Project



(CC) BY © Jeff Heath and the Dogon and Bangime
Languages Project

Order: Orthoptera

Family: Acrididae

[Anacridium melanorhodon](#) .

- **kóló-kà:\\kóló-[kà:-mbò]** . "grasshopper sp. (tree locust)".
- **kà: [kóló-kà:] \\kà: [kóló-[kà:-mbò]]** . "grasshopper sp. (tree locust)".



(CC) BY © Jeff Heath and the Dogon and Bangime
Languages Project

[Cataloipus cymbiferus](#) .

- **ànĵi-kǎ:\\ànĵi-kǎ:-mbò** . "grasshopper sp.". Lit. "roselle-grasshopper".



(CC) BY © Jeff Heath and the Dogon and Bangime
Languages Project

[Diablocatantops axillaris](#) .

- **kà:-nègé\kà:-[nègú-mbó]** . "grasshopper sp."



(CC) BY © Jeff Heath and the Dogon and Bangime
Languages Project



(CC) BY © Jeff Heath and the Dogon and Bangime
Languages Project



(CC) BY © Jeff Heath and the Dogon and Bangime
Languages Project

[Eurysternacris brevipes](#) .

- **kĩn-sègèrè kà:\kĩ"sègèrè kà:-mbò** . "grasshopper sp."



(CC) BY © Jeff Heath and the Dogon and Bangime
Languages Project



(CC) BY © Jeff Heath and the Dogon and Bangime
Languages Project

[Hieroglyphus daganensis](#) .

- **bòrò-kă:\bòrò-[kă:-mbò]** . "grasshopper sp."
- **tàná-bónónó\tàná-[bónónó-mbó]** . "grasshopper sp."



(CC) BY © Jeff Heath and the Dogon and Bangime
Languages Project



(CC) BY © Jeff Heath and the Dogon and Bangime
Languages Project



(CC) BY © Jeff Heath and the Dogon and Bangime
Languages Project

[Homoxyrhopes punctipennis](#) .

- **ḍimbĩrà-gùlà:\-gùlà:-mbò** . "grasshopper sp."
- **bc it is pretty**) . "grasshopper sp."



(CC) BY © Jeff Heath and the Dogon and Bangime
Languages Project



(CC) BY © Jeff Heath and the Dogon and Bangime
Languages Project

[Humbe tenuicornis](#) .

- **gàlà-kǎ:\-gàlà-kǎ:-mbò** . "grasshopper sp."



(CC) BY © Jeff Heath and the Dogon and Bangime
Languages Project



(CC) BY © Jeff Heath and the Dogon and Bangime
Languages Project

[Kraussaria angulifera](#) .

- **jĩŋ-kǎ:\-jĩŋ-kǎ:-mbò** . "grasshopper sp."



(CC) BY © Jeff Heath and the Dogon and Bangime
Languages Project



(CC) BY © Jeff Heath and the Dogon and Bangime
Languages Project

[Kraussella amabile](#) .

- **däy-** [sènè-sénè] **däy-** [sènè-sénè-mbò] . "grasshopper sp."



(CC) BY © Jeff Heath and the Dogon and Bangime
Languages Project



(CC) BY © Jeff Heath and the Dogon and Bangime
Languages Project

[Oedaleus senegalensis](#) .

- **kà:-** [pérè-pérè] **kà:-** [pérè-pérè-mbò] . "grasshopper sp."



(CC) BY © Jeff Heath and the Dogon and Bangime
Languages Project



(CC) BY © Jeff Heath and the Dogon and Bangime
Languages Project



(CC) BY-SA ©

[Ornithacris cavroisi](#) .

- **kà:** nĕy"y"è **kà:** nĕy-mbò . "grasshopper sp.". Lit. "grasshopper pretty".



(CC) BY © Jeff Heath and the Dogon and Bangime
Languages Project



PD ©

[Orthacantha humilicrus](#) .

- kóló-kà:\\kóló- [kà:-mbò] . "grasshopper sp."
- kà: [kóló-kà:] \\kà: [kóló- [kà:-mbò]] . "grasshopper sp."



(CC) BY © Jeff Heath and the Dogon and Bangime
Languages Project

[Schistocerca gregaria](#) .

- kóló-kà:\\kóló- [kà:-mbò] . "pilgrim locust (gregarious phase)".
- kòlò-kà: bánè . "pilgrim locust (gregarious phase)". Lit. "tree.locust red".
- kòlò-kà: ó:là . "pilgrim locust (gregarious phase)". Lit. "tree.locust yellow".
- kà:-nǒ:lè\\kà:- [nǒ:l- mbò] . "pilgrim locust (gregarious phase)". Lit. "grasshopper yellow".
- kà: nè:ndé:\\kà: nè:ndá: . "pilgrim locust (gregarious phase)". Lit. "grasshopper bad".



PD ©



Public Domain by



PD NASA ©

[Scintharista notabilis](#) .

- kà: kàkàrê:-bánè\\kà: kàkàrê:-bán-bò . "grasshopper sp." . Lit. "grasshopper wing-red".
- kà:-gólò . "grasshopper sp." .



(CC) BY © Jeff Heath and the Dogon and Bangime Languages Project



(CC) BY © Jeff Heath and the Dogon and Bangime Languages Project



PD ©

Family: Pyrgomorphidae

[Atractomorpha acutipennis](#) .

- kà:-púlàndè:\\kà:-púlàndò: . "grasshopper sp." .



PD ©

[Chrotogonus senegalensis](#) .

- **kà:-[dùgà-dùgé]** \\ **kà:-[dùgà-dùgú-mbó]** . "toad grasshopper". Lit. "grasshopper-sorcerer".



(CC) BY © Jeff Heath and the Dogon and Bangime
Languages Project



(CC) BY © Jeff Heath and the Dogon and Bangime
Languages Project

[Poeciloceris bufonius hieroglyphicus](#) .

- **kà:-jóm̀b̀̀** \\ **kà:-[jóm̀b̀̀-̀̀mb̀̀̀]** . "grasshopper sp.". Lit. "grasshopper-antenna".



(CC) BY © Jeff Heath and the Dogon and Bangime
Languages Project



(CC) BY © Jeff Heath and the Dogon and Bangime
Languages Project

Phylum: Chordata

Class: Actinopterygii

Order: Characiformes

Family: Alestidae

[Brycinus leuciscus](#) .

- **p̀̀l̀̀e-p̀̀l̀̀e** \\ **-̀̀mb̀̀̀** . "sardine-like fish sp.".
- **̀̀j̀̀i-p̀̀l̀̀e-p̀̀l̀̀e** \\ **̀̀j̀̀u:-p̀̀l̀̀e-p̀̀l̀̀e-̀̀mb̀̀̀** . "sardine-like fish sp.".



(CC) BY © Jeff Heath and the Dogon and Bangime
Languages Project



(CC) BY © Jeff Heath and the Dogon and Bangime
Languages Project



(CC) BY © Jeff Heath and the Dogon and Bangime
Languages Project

[Hydrocynus forskahlii](#) .

- ìjĩ dúlǎ:-bánè . "tigerfish sp."



(CC) BY © Jeff Heath and the Dogon and Bangime
Languages Project



(CC) BY © Jeff Heath and the Dogon and Bangime
Languages Project



(CC) BY © Jeff Heath and the Dogon and Bangime
Languages Project

[Micralestes elongatus](#) .

- pǎlè-pǎlè: pǎlê:\pǎlá: . "tiny sardine-like fish sp."



(CC) BY © Jeff Heath and the Dogon and Bangime
Languages Project

Order: Siluriformes

Family: Malapteruridae

[Malapterurus electricus](#) .

- ìjì-májà\ìjù:-májà-mbò . "electric catfish".

Family: Mochokidae

[Synodontis schall](#) .

- ìjì-kéjélé\ìjù:-kéjélé-mbó . "spiny upside-down catfish sp.".



(CC) BY-SA © Peter van der Sluijs

Class: Amphibia

Order: Anura

Family: Bufonidae

[Amietophrynus xeros](#) (Tandy, Tandy, Keith and Duff-MacKay, 1976) .

- kòjà pà:bé:\kòjà-mbò pà:bó: . "subdesert toad".
- kòjà ìnjé:\kòjà-mbò ìnjé-mbó . "subdesert toad".



(CC) BY © Jeff Heath and the Dogon and Bangime
Languages Project



(CC) BY © Jeff Heath and the Dogon and Bangime
Languages Project



(CC) BY © Jeff Heath and the Dogon and Bangime
Languages Project

Family: Dicroglossidae

[Hoplobatrachus occipitalis](#) (Günther, 1858) .

- éjélé\éjélé-mbó . "groove-crowned bullfrog (young)".

- **kòjà-éjélé** \ \ **kòjà- [éjélé-mbó]** . "groove-crowned bullfrog (young)".
- **kòjà-búgútúrí** \ \ **[kòjà-mbò] - [búgútúrm-mbó]** . "groove-crowned bullfrog (adult)".



(CC) BY © Jeff Heath and the Dogon and Bangime
Languages Project



(CC) BY © Jeff Heath and the Dogon and Bangime
Languages Project



(CC) BY © Jeff Heath and the Dogon and Bangime
Languages Project

Family: Ranidae

[*Hylarana galamensis*](#) (Duméril and Bibron, 1841) .

- **kòjà-kójé** . "Galam striped frog".



(CC) BY © Jeff Heath and the Dogon and Bangime
Languages Project



(CC) BY-NC © inaturalist



(CC) BY-NC © Drewes, R.C.

Class: Aves

Order: Accipitriformes

Family: Accipitridae

[*Aquila rapax*](#) (Temminck, 1828) . Characteristics: carnivore; body-length: 65-80 cm; variable colouration ranging from dark brown to almost white; pale underside. ([Sinclair 1994](#): 76)

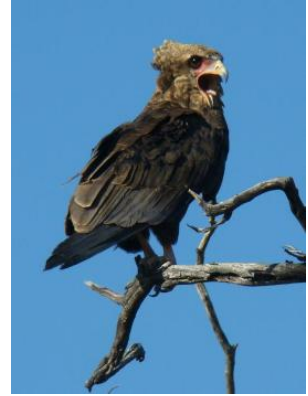
- **àà-gónjè** \ \ **àà-gónjù** . "tawny eagle".



Public Domain by Taa DoBeS team
(Boden/Güldemann/Naumann)



(CC) BY-SA © Lip Kee



Public Domain by Taa DoBeS team
(Boden/Güldemann/Naumann)

Gyps africanus Salvadori, 1865 . Characteristics: nivore; body-length: 110 cm, wedge-shaped tail and long, narrow wings; rust-coloured below and dark above; pale head with black face and 'beard'. Biotope: savanna, woodland. ([Sinclair 1994](#): 70)

- **tèbè m̄-pílè\ \tèbù: m̄:- [pílè-mbò]** . "white-backed vulture".
- **tèbè kógóló** . "white-backed vulture".



(CC) BY-SA © unknown



(CC) BY-SA © Mark Robinson

Gyps rueppellii (A. E. Brehm, 1852) . Characteristics: carnivore; body-length: 115 cm, brown plumage; wings with dark flight feathers and pale linings. ([Sinclair 1994](#): 70)

- **dùbó\ \dùbó-mbó** . "Rueppell's griffon vulture".
- **tèbè-dùbó\ \tèbù:- [dùbó-mbó]** . "Rueppell's griffon vulture".
- **tèbè nálé:** . "Rueppell's griffon vulture".



PD ©



(CC) BY-NC-SA © Gerald and Buff Corsi



PD ©

Micronisus gabar (Daudin, 1800) . Characteristics: carnivore; body-length: 30-34 cm; grey throat and breast; reddish legs and cere; grey wings. Biotope: woodland. ([Sinclair 1994](#): 86)

- à:mà-gùmbé\\à:mà-gumbé-mbó . "gabar goshawk".



(CC) BY © Neil Strickland



PD US ©



(CC) BY ©

Milvus migrans (Boddaert, 1783) . Characteristics: carnivore; body-length: 56 cm; long forked tail; dark plumage. ([Sinclair 1994](#): 88)

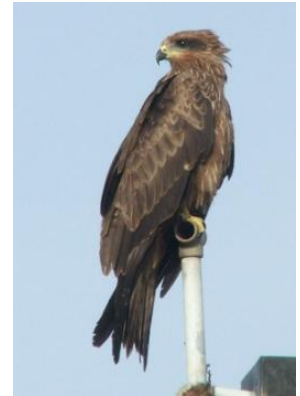
- tébè\\tébù: . "kite (hawk)".
- tèbè [kòr-mbò] -điyé\\tèbù: [kòr-mbò] - [điy-mbó] . "kite (hawk)".
- bà:bà-jébé . "kite (hawk)".



(CC) BY-SA © Thomas Kraft



(CC) BY-NC © inaturalist



(CC) BY-SA ©

Necrosyrtes monachus (Temminck, 1823) . Characteristics: carnivore; body-length: 70 cm; brown plumage; bare head with red skin. ([Sinclair 1994](#): 72)

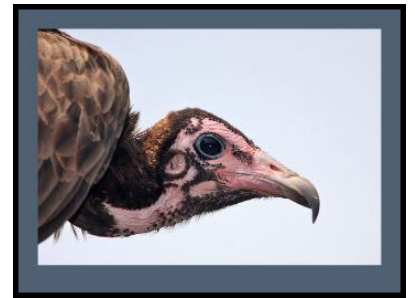
- **tèbè-jigà:rĩ\\tèbù:- [jigà:r-mbò]** . "hooded vulture".



(CC) BY-SA © Atamari



(CC) BY-NC © Scott Bowers



(CC) BY-NC-SA © Steve Garvie

Neophron percnopterus (Linnaeus, 1758) . Characteristics: carnivore; body-length: 62 cm; white plumage; wings with black primaries; white tail. ([Sinclair 1994](#): 72)

- **tèbè pîlè\\tèbù pîlè-mbò** . "Egyptian vulture".



PD ©



(CC) BY-SA © Kousik Nandy



(CC) BY ©

Terathopius ecaudatus (Daudin, 1800) . Characteristics: carnivore; body-length: 55-70 cm; black, white and chestnut plumage; short tail; long wings; red face. Biotope: semi-desert. ([Sinclair 1994](#): 74)

- **ḍúl\ḍúl-mbó** . "bateleur hawk".
- **tèbè-ḍúl\ḍù:- [ḍúl-mbó]** . "bateleur hawk".



(CC) BY © Derek Keats



(CC) BY-SA ©



Public Domain by

Order: Anseriformes

Family: Anatidae

Dendrocygna bicolor (Vieillot, 1816) . Characteristics: herbivore; body-length: 46 cm; red-brown plumage; dark brown with some white on the back; white rump; dark stripe in the neck; dark bill. Biotope: freshwater. ([Sinclair 1994](#): 64)

- **èlè kègélè** . "fulvous whistling duck".



(CC) BY-SA ©



(CC) BY-SA ©



(CC) BY-NC © inaturalist

Plectropterus gambensis (Linnaeus, 1766) . Characteristics: herbivore; body-length: 100 cm, black plumage on the back; white on the belly; red bill; white face;. Biotope: grassland. ([Sinclair 1994](#): 64)

- **èlè-púrá\èlè- [púrá-mbò]** . "spur-winged goose". Lit. "duck-grey".



(CC) BY-SA © Appaloosa



(CC) BY-SA © Dick Daniels

Sarkidiornis melanotos (Pennant, 1769) . Characteristics: omnivore; body-length: 65 - 80 cm, black and white plumage; speckled grey head; male larger than female; in breeding season the male has a large comb on the bill. Biotope: freshwater. ([Sinclair 1994](#): 64)

- èlè [kɪnjà:-mà] -dómbè\\èlè-mbò [kɪnjà-mà] -dómbù: . "knob-billed goose".
- èlè-dómbè\\ [èlè-mbò] -dómbù: . "knob-billed goose".



(CC) BY ©



(CC) BY-SA ©



(CC) BY-SA © Lip Kee

Order: Apodiformes

Family: Apodidae

Apus affinis (J. E. Gray, 1830) .

- sémbé\\sémbé-mbó . "little African swift".



(CC) MARK © creator:Thomas Hardwicke

Order: Bucerotiformes

Family: Bucerotidae

[Tockus erythrorhynchus](#) (Temminck, 1823) .

- kəkəjú\\kəkəjú-mbó . "red-billed hornbill".



(CC) BY-NC © ellisms



(CC) BY-SA © Mehmet Karatay



(CC) BY © Biodiversity Heritage Library

[Tockus nasutus](#) (Linnaeus, 1766) .

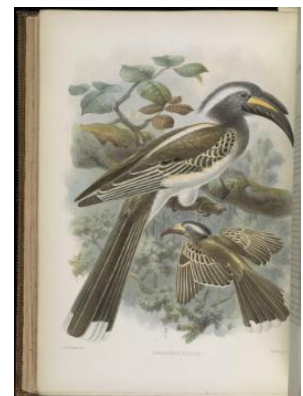
- mâ:n\\mâ:n-bò . "grey hornbill".



(CC) BY-NC © inaturalist



(CC) BY-SA © Lip Kee from Singapore, Republic of Singapore



(CC) BY © Biodiversity Heritage Library

Family: Bucorvidae

[Bucorvus abyssinicus](#) (Boddaert, 1783) .

- dún\\dún-bò . "Abyssinian ground hornbill".



(CC) BY © Jeff Heath and the Dogon and Bangime Languages Project

Order: Charadriiformes

Family: Burhinidae

[Burhinus capensis](#) (Lichtenstein, 1823) .

- **kîlé-kîlé: \\kîlé-kîlé:-mbò** . "spotted thick-knee".
- **kîlé-kîlé: gîndé:** . "spotted thick-knee".



(CC) BY-SA © Jutta ? unknown



(CC) BY-SA © Cburnett?



(CC) BY © Jeff Heath and the Dogon and Bangime Languages Project

Family: Charadriidae

[Vanellus tectus](#) (Boddaert, 1783) .

- **kîlé-kîlé: \\kîlé-kîlé:-mbò** . "black-headed lapwing (plover)".
- **kîlé-kîlé: pâlé:** . "black-headed lapwing (plover)".



(CC) BY-NC-SA © Bernard DUPONT



(CC) MARK © ChriKo



(CC) BY © Noel Reynolds

Family: Glareolidae

[*Rhinoptilus chalcopterus*](#) (Temminck, 1824) .

- **kîlé-kîlé**:\kîlé-kîlé:-mbò . "bronze-winged courser".



Public Domain by Nicolas Huet



(CC) BY-NC-SA © Bart Wursten

Family: Jacanidae

[*Actophilornis africanus*](#) (Gmelin, 1789) . Characteristics: carnivore; body-length: 28 cm; red-brown body; white throat; yellow breast; black neck; blue bill and forehead. Biotope: flooded grassland, freshwater. ([Sinclair 1994](#): 102)

- **èlè-kègélè**:\èlè-kègîl-mbò . "jacana". Lit. "duck runty".

[Columba livia](#) Gmelin, 1789 .

- **pègòlò-béndé** \\ **pègòlò- [béndé-mbó]** . "rock pigeon, rock dove".
- **ólé gùmbà:** \\ **gùmbà:-mbò** . "pigeon (domestic)".



(CC) BY-SA © Mike Pennington



(CC) BY-SA © J.M.Garg

[Oena capensis](#) (Linnaeus, 1766) .

- **kàkàrà-béndé** \\ **kàkàrà- [béndé-mbó]** . "long-tailed pigeon, namaqua dove".



(CC) BY-SA © Lip Kee from Singapore, Republic of Singapore



(CC) BY-NC-SA © David Blank



http://en.wikipedia.org/wiki/public_domain © C. G. Finch-Davies (1875-1920)

[Streptopelia senegalensis](#) (Linnaeus, 1766) .

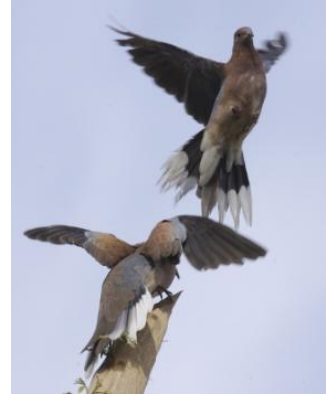
- **béndé** \\ **béndé-mbó** . "laughing dove".



(CC) BY-SA ©



(CC) BY-SA © Lip Kee



(CC) BY-SA ©

[*Streptopelia vinacea*](#) (Gmelin, 1789) .

- **b̀̀r̀̀-̀̀b̀̀nd̀̀é** \\ **b̀̀r̀̀-̀̀b̀̀nd̀̀é-̀̀mb̀̀ó** . "doves with black nape rings (vinaceous dove; mourning dove)".



(CC) BY ©

Order: Coraciiformes

Family: Alcedinidae

[*Halcyon senegalensis*](#) (Linnaeus, 1766) .

- **n̄́: d̄́: s̄́::rrr̀̀** . "woodland kingfisher".
- **à̀̀n̄̀-̀̀d̄́: s̄́::rrr̀̀** . "woodland kingfisher".
- **ỳ̀ógé n̄́: \\ n̄́:-̀̀mb̀̀ó** . "woodland kingfisher".



(CC) BY-SA ©



(CC) BY-SA © User:Justin.Tweedie



Public Domain by

Family: Coraciidae

[Coracias abyssinicus](#) Hermann, 1783 .

- bàrá-kòⁿ:kò^{\\}bàrá-kòⁿ:kòⁿ-mbò . "Abyssinian roller".



PD ©



(CC) BY-SA ©

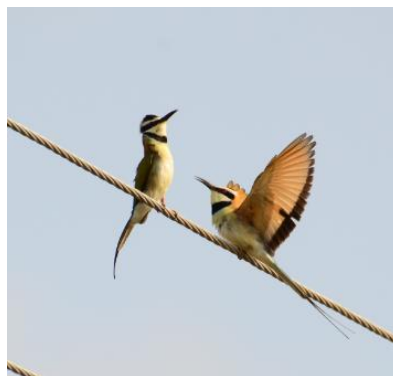
Family: Meropidae

[Merops albicollis](#) Vieillot, 1817 .

- gwǎ:-kǒ:lè^{\\}gwǎ:-kǒ:lè^{\\}-mbò . "white-throated bee-eater".



(CC) BY © Ron Knight from Seaford, East Sussex,
United Kingdom



(CC) BY-SA ©



(CC) BY © Gerhard Singer

[Merops orientalis](#) Latham, 1802 .

- gwǎ:-kǔ:lè\gwǎ:-kǔ:lè-mbò . "little green bee-eater (bird)".



(CC) BY-SA © K Hari Krishnan



(CC) BY-SA ©



(CC) BY-SA © Tsrawal

Order: Cuculiformes

Family: Cuculidae

[Centropus senegalensis](#) (Linnaeus, 1766) .

- bàrà-dú:-dù:\bàrà-dú:-dù:-mbò . "Senegal coucal".



(CC) BY © ThomHasi



(CC) BY © Jeff Heath and the Dogon and Bangime Languages Project

Order: Falconiformes

Family: Falconidae

[Falco tinnunculus](#) Linnaeus, 1758 . Characteristics: carnivore; body-length: 33-39 cm,chestnut back with black spots; grey head; barred and spottet underwing. Biotope: rocky area, mountains. ([Sinclair 1994](#): 92)

- sàbèná\sàbèná-mbó . "rock kestrel".



(CC) BY-SA ©



(CC) BY-SA ©



(CC) BY-SA ©

Order: Galliformes

Family: Numididae

[Numida meleagris](#) (Linnaeus, 1758) . Characteristics: omnivore; body-length: 56 cm; grey plumage with white dots; blue and red skin on the head. Biotope: grassland, woodland. ([Sinclair 1994](#): 102)

- ă:mà\ă:mà-mbò . "guinea-fowl".



(CC) BY-SA ©



(CC) BY © Jeff Heath and the Dogon and Bangime Languages Project



(CC) BY © Chris Eason

Family: Phasianidae

[Francolinus bicalcaratus](#) (Linnaeus, 1766) .

- təkê:\təkê:-mbò . "double-spurred francolin".



(CC) BY © Biodiversity Heritage Library



(CC) BY © Jeff Heath and the Dogon and Bangime Languages Project



(CC) BY © Jeff Heath and the Dogon and Bangime Languages Project

Ptilopachus petrosus (Gmelin, 1789) .

- wàṅgá\\wàṅgá-mbó . "stone partridge".



(CC) BY-SA ©



(CC) BY © Jeff Heath and the Dogon and Bangime Languages Project



(CC) BY © Jeff Heath and the Dogon and Bangime Languages Project

Order: Gruiformes

Family: Gruidae

Balearica pavonina (Linnaeus, 1758) .

- kù má\\kù má-mbó . "crowned crane".
- èlè-kù má\\èlè-kù má-mbó . "crowned crane".



Public Domain by



(CC) BY ©

Family: Otididae

Eupodotis senegalensis (Vieillot, 1820) .

- **dàná-kâ:**"\dáná-kâ:"-mbò . "white-bellied (= Senegal) bustard".



(CC) BY-SA © Lip Kee



(CC) BY-SA ©



(CC) MARK © Creator:Claude Gibney Finch-Davies

Neotis denhami (Children & Vigors, 1826) .

- **dàná-kâ:**"\dáná-kâ:"-mbò . "Denham's bustard".



Public Domain by



(CC) BY-SA ©



(CC) BY-NC-SA © Bernard DUPONT

Order: Passeriformes

Family: Corvidae

[*Corvus albus*](#) Statius Muller, 1776 .

- **k̀̀nd̀̀ng̀̀l̀̀** \ \ **k̀̀nd̀̀ng̀̀l̀̀-̀̀mb̀̀** . "pied crow".



(CC) BY-SA © Thomas Schoch



(CC) BY-SA © Myburgh

[*Corvus ruficollis*](#) Lesson, 1831 .

- **k̀̀nd̀̀ng̀̀l̀̀ g̀̀m̀̀** \ \ **g̀̀g̀:-̀̀mb̀̀** . "black crow".



(CC) MARK © G. G. White – delineator. W. H. Dougal – engraver



(CC) BY-SA © Lip Kee Yap



(CC) BY-NC © Biopix

[*Ptilostomus afer*](#) (Linnaeus, 1766) .

- **s̀̀:-̀̀s̀̀nd̀̀iỳ̀** \ \ **s̀̀:-̀̀s̀̀nd̀̀iỳ̀-̀̀mb̀̀** . "piapiac (magpie)".



(CC) BY-SA ©



(CC) BY © Jeff Heath and the Dogon and Bangime Languages Project



(CC) BY-SA ©

Family: Estrildidae

[Amadina fasciata](#) (Gmelin, 1789) .

- **nĩ: jènjà-sèmǎ:\nĩ:-mbò jènjà-sèmǎ** . "cut-throat finch".



(CC) BY © Jeff Heath and the Dogon and Bangime Languages Project



(CC) BY © Jeff Heath and the Dogon and Bangime Languages Project

[Lagonosticta senegala](#) (Linnaeus, 1766) .

- **òndô: sèjĩ\sèjĩ-mbò** . "red-billed firefinch".



(CC) BY © Original uploader was ThomHasi at en.wikipedia



Public Domain by Veli Pohjonen



(CC) BY © msafari2425

[Uraeginthus bengalus](#) (Linnaeus, 1766) .

- yàwó: sèjì . "red-cheeked cordon-bleu". Lit. "women's bird".



(CC) BY ©



(CC) BY-SA ©



Public Domain by

Family: Hirundinidae

[Ptyonoprogne fuligula pusilla](#) (Zedlitz, 1908) .

- sémbé\\sémbé-mbó . "rock martin (swallow)".
- sèmbè nálé: . "rock martin (swallow)".



(CC) BY © Jeff Heath and the Dogon and Bangime Languages Project



(CC) BY © Jeff Heath and the Dogon and Bangime Languages Project



(CC) BY © Jeff Heath and the Dogon and Bangime Languages Project

Family: Muscicapidae

[Cercotrichas podobe](#) (Statius Muller, 1776) .

- nĩ: [pùr-mà] -jènjê:\\nĩ:-mbò [pùr-mà] -jènjô: . "black scrub-robin". Lit. "bird [womb-at]-lift".



(CC) BY-SA ©

Family: Nectariniidae

[Nectarinia pulchella](#) (Linnaeus, 1766) .

- **nĩ: mènjí:** \\nĩ:-mbò mènjí-mbò . "beautiful (=long-tailed) sunbird". Lit. "bird small".
- **nĩ: nálé:** \\nĩ:-mbò nálá: . "beautiful (=long-tailed) sunbird". Lit. "bird pretty".



(CC) BY © Bob



(CC) BY © Biodiversity Heritage Library



(CC) BY © Jeff Heath and the Dogon and Bangime Languages Project

Family: Passeridae

[Passer griseus](#) (Vieillot, 1817) .

- **nĩ: tógúné** . "grey-headed sparrow".



(CC) BY-SA ©



(CC) BY © Jeff Heath and the Dogon and Bangime Languages Project



(CC) BY-SA © Tom Tarrant

Family: Ploceidae

[Bubalornis albirostris](#) (Vieillot, 1817) .

- **kòṅgòlò** . "white-billed buffalo-weaver".



(CC) BY © Jeff Heath and the Dogon and Bangime
Languages Project



(CC) BY © Jeff Heath and the Dogon and Bangime
Languages Project

[Euplectes franciscanus](#) (Isert, 1789) .

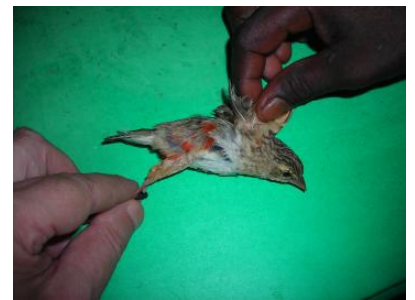
- **dôn-dôn** . "northern red bishop (bird)".



(CC) BY © Jeff Heath and the Dogon and Bangime
Languages Project



(CC) BY-SA ©



(CC) BY © Jeff Heath and the Dogon and Bangime
Languages Project

[Ploceus cucullatus](#) (Statius Muller, 1776) .

- **nĩ:-nǒ:lè** \ [nĩ:-mbò] - [nǒ:l-mbò] . "village weaver (bird)".
- **nĩ:-sójá** \ [nĩ:-mbò] - [sójá-mbó] . "village weaver (bird)".



(CC) BY © Simon J. Tonge



(CC) BY © Simon J. Tonge



(CC) BY © Simon J. Tonge

[*Ploceus luteolus*](#) (Lichtenstein, 1823) .

- **nĩ:-nõ:lè** \\ [nĩ:-mbò] - [nõ:l-mbò] . "little weaver, slender-billed weaver (bird)".



(CC) BY-NC © Scott Bowers



(CC) BY © Joaquim Grave

[*Quelea quelea*](#) (Linnaeus, 1758) .

- **búrgù nĩ:-mbò** . "black-faced dioch (bird)". Lit. "bourgou.grass's birds".



(CC) BY © Pawel Ryszawa



(CC) MARK © Creator:John Gerrard Keulemans



(CC) BY-SA © Alastair Rae

Family: Sturnidae

[*Buphagus africanus*](#) Linnaeus, 1766 .

- **nàwó: nĩ:** \\ [nĩ:-mbò] . "oxpecker (bird)". Lit. "cows' bird".



(CC) BY-SA © Steve Garvie from Dunfermline, Fife,
Scotland



(CC) BY-SA © Steve Garvie from Dunfermline, Fife,
Scotland



(CC) BY © Biodiversity Heritage Library

[Lamprotornis caudatus](#) (Statius Muller, 1776) .

- **sà:-sòndiyá\ \sà:-sòndiyá-mbó** . "long-tailed glossy starling".



(CC) BY-SA © Salix



(CC) BY © Thom Haslam



(CC) BY © Biodiversity Heritage Library

[Lamprotornis chalybaeus](#) Hemprich & Ehrenberg, 1828 .

- **nĩ: gèmlmbé:\ \nĩ:-mbò gèmlmbó** . "greater blue-eared starling (= blue-eared glossy starling)".



(CC) BY © Jeff Heath and the Dogon and Bangime

Languages Project



(CC) BY © Jeff Heath and the Dogon and Bangime

Languages Project



(CC) MARK © creator:Joseph Smit. Richard Bowdler
Sharpe (text)

[Onychognathus neumanni](#) (Alexander, 1908) .

- **bàrá ká:"ká:"** . "crag chestnut-winged (= Neumann's) starling".

Family: Viduidae

[Vidua chalybeata](#) (Statius Muller, 1776) .

- **ánà:-sèjĩ** . "village indigobird".
- **yàwó: sèjĩ** . "village indigobird".



(CC) BY-NC-SA © David Blank



(CC) BY-SA © Hectonichus



(CC) BY © Jeff Heath and the Dogon and Bangime Languages Project

Vidua macroura (Pallas, 1764) .

- **nĩ:** [[mó sèjĩ] túlè-mbò] [dúlò: dònè] . "pin-tailed whydah (esp. breeding male)". Lit. "bird [it-sold-its-aunt-and-bought-a-tail]" .



(CC) BY-SA © Anonymous



(CC) BY-NC © Flickr



(CC) BY-NC © Mike Comber

Order: Pelecaniformes

Family: Ardeidae

Bubulcus ibis (Linnaeus, 1758) . Characteristics: carnivore; body-length: 54 cm; white and light brown plumage; yellow bill; breeding bird has a red bill; often found in association with cattle. Biotope: grassland. ([Sinclair 1994](#): 54)

- **jěnjà kòkòrò** \\ **kòkòr-mbò** . "cattle egret".
- **èlè pílè** \\ **pílè-mbò** . "cattle egret".



(CC) BY-SA © Atamari



(CC) BY-SA © Atamari



(CC) BY © Jeff Heath and the Dogon and Bangime Languages Project

Order: Piciformes

Family: Picidae

[Dendropicos goertae](#) (Statius Muller, 1776) .

- **pòm̀b̀-đògò\pòm̀b̀-đògò-mb̀** . "grey woodpecker". Lit. "hole-peck".



(CC) BY ©



(CC) BY-SA ©



(CC) BY © Jeff Heath and the Dogon and Bangime Languages Project

Family: Ramphastidae

[Lybius vieilloti](#) (Leach, 1815) .

- **nĩ: tò:-t̀à:-t̀ó:** . "Vieillot's barbet".



Public Domain by



(CC) BY-SA © Gossipguy

Order: Psittaciformes

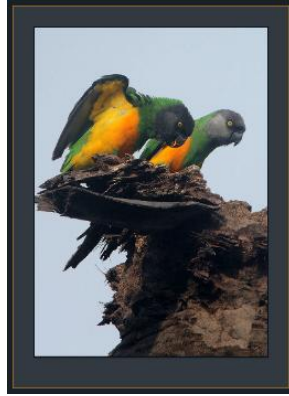
Family: Psittacidae

[Poicephalus senegalus](#) (Linnaeus, 1766) .

- **b̀r̀-đ-đ-đ kùb̀ kù ~ b̀r̀đ: kùy\kùy-mb̀** . "Senegal (= yellow-bellied) parrot". Lit. "lowland's parakeet".



(CC) BY-SA ©



(CC) BY-NC-SA © Steve Garvie



(CC) BY-NC-SA © David Blank

[Psittacula krameri](#) (Scopoli, 1769) .

- **kûy\\kûy-mbò** . "rose-ringed parakeet (= Senegal long-tailed parrot)".



(CC) BY © Jeff Heath and the Dogon and Bangime
Languages Project



(CC) BY © Jeff Heath and the Dogon and Bangime
Languages Project



(CC) BY © Jeff Heath and the Dogon and Bangime
Languages Project

Order: Strigiformes

Family: Caprimulgidae

[Caprimulgus tristigma](#) Rüppell, 1840 .

- **bèrî:\\bèrî:-mbò** . "nightjar, freckled".



Public Domain by



(CC) BY ©

Family: Strigidae

[Bubo cinerascens](#) Guerin-Meneville, 1843 .

- **dündè\ \dündù-mbò** . "vermiculated (or: greyish) eagle-owl".
- **dündè gĩndé:\ \dündù-mbò gĩndó** . "vermiculated (or: greyish) eagle-owl". Lit. "owl big".



(CC) BY © Jeff Heath and the Dogon and Bangime
Languages Project



(CC) BY © Jeff Heath and the Dogon and Bangime
Languages Project



(CC) BY © Jeff Heath and the Dogon and Bangime
Languages Project

[Bubo lacteus](#) (Temminck, 1820) .

- **dündè-gègélè\ \dündù:-gègíl-mbò** . "Verreaux's (=milky) eagle-owl". Lit. "owl stutter".



Public Domain by Taa DoBeS team
(Boden/Güldemann/Naumann)



Public Domain by Taa DoBeS team
(Boden/Güldemann/Naumann)



Public Domain by Taa DoBeS team
(Boden/Güldemann/Naumann)

[Otus senegalensis](#) (Swainson, 1837) .

- **dùndè kègélè\kègìl-mbò** . "scops owl".



(CC) BY © Vernon Swanepoel



(CC) BY-NC-SA © Bernard DUPONT



Author died more than 70 years ago public domain
images ©

[Ptilopsis leucotis](#) (Temminck, 1820) .

- **dùndè gindé\ dùndù-mbò gindó** . "northern white-faced owl".



(CC) BY-NC © inaturalist



Public Domain by

Family: Tytonidae

[Tyto alba](#) (Scopoli, 1769) .

- òndô: ñĩ:\\ñĩ:-mbò . "barn owl". Lit. "children's bird".



(CC) BY-SA ©



Public Domain by Racheo ??



(CC) BY-SA ©

Order: Struthioniformes

Family: Struthionidae

[Struthio camelus](#) Linnaeus, 1758 .

- tátàgĩ:\\tátàgĩ:-mbò . "ostrich".



Public Domain by Taa DoBeS team
(Boden/Güldemann/Naumann)



Public Domain by Taa DoBeS team
(Boden/Güldemann/Naumann)



Public Domain by Roland Kiessling

Order: Upupiformes

Family: Upupidae

[Upupa epops](#) Linnaeus, 1758 .

- [d̥r̥-mà] -j̥ŋg̥ó\\-j̥ŋg̥ó-mbó . "hoopoe".
- p̥mb̥-dógò\\p̥mb̥-dógò-mbò . "hoopoe".



(CC) BY-SA ©



(CC) BY-SA ©



(CC) BY © Biodiversity Heritage Library

Class: Mammalia

Order: Artiodactyla

Family: Bovidae

Damaliscus korrigum (Ogilby, 1837) .

- **m̀b̀ar̀og̀a`m̀b̀ar̀og̀a-m̀b̀o** . "korrigum (antelope close to topi), 100 kg (horselike, glossy; long horns curving backward then forward, black patch on upper legs, ochre-colored lower legs)".
- **ᵿáw`à-síyà`ᵿáw`à-síyà-m̀b̀o** . "korrigum (antelope close to topi), 100 kg (horselike, glossy; long horns curving backward then forward, black patch on upper legs, ochre-colored lower legs)".



(CC) BY ©



(CC) MARK © Philip Sclater



(CC) BY ©

Gazella dama (Pallas, 1766) .

- **m̀b̀a:g̀amb̀u:l̀a`m̀b̀a:g̀amb̀u:l̀a-m̀b̀o** . "dama gazelle, 1 m shoulder height, 40-75 kg (face and belly white, red-brown top, short curled horns)".
- **t̀end̀el̀b̀a** . "dama gazelle, 1 m shoulder height, 40-75 kg (face and belly white, red-brown top, short curled horns)".



PD ©



PD ©



(CC) MARK © Philip Sclater

[Gazella dorcas](#) (Linnaeus, 1758) .

- **gě:rè\gě:rè-mbò** . "dorcas gazelle, 60 cm shoulder height, 15-20 kg (long ears, horns have annular rings and converge at top)".



(CC) BY-NC-SA © cultnat



(CC) BY-NC-SA © cultmat



(CC) PUBLICDOMAIN © Tree of Life web project

[Hippotragus equinus koba](#) (Gray, 1872) .

- **kàyé** . "roan antelope, 1.3 m shoulder height, 250 kg (heavy fur, mane, black-tipped tail and ears)".



(CC) BY © Jeff Heath and the Dogon and Bangime

Languages Project



(CC) BY © Jeff Heath and the Dogon and Bangime

Languages Project

[*Sylvicapra grimmia*](#) (Linnaeus, 1758) . Characteristics: herbivore; height: 50cm; the coat varies in colour from light grey-brown to red-brown; the belly and the insides of the legs are white; the front legs have vertical black stripes; there is a tuft of long, black hair on the forehead; the short tail is dark on top and white underneath; females are larger and lack horns;. Biotope: savanna, grassland, woodland, mountains. ([Cillié 1997](#): 64)

- **nǒnjè\\nǒnjù-mbò** . "bush duiker, 45-70 cm shoulder height, 15-20 kg (goatlike, males with short vertical horns o 18 cm, can leap)".



Public Domain by unknown (Chuckupd)



(CC) BY-NC-SA © Bernard DUPONT



(CC) BY © Biodiversity Heritage Library

[*Syncerus caffer*](#) (Sparrman, 1779) . Characteristics: herbivore; height: 1-1,7m; this cattle-like animal is born with a light reddish-brown coat that darkens with age until it is grey-black; both sexes are horned, but the horns of the male are especially large with thick bosses;. Biotope: savanna, scrubforest, forest, grassland. ([Cillié 1997](#): 84)

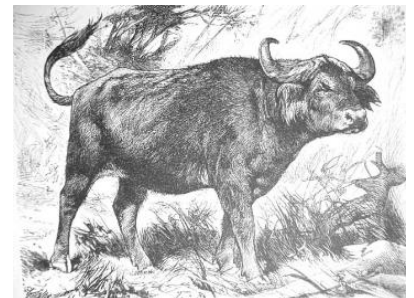
- **kéré nè:\\nàwò** . "African buffalo".
- **òlé\\òlú-mbó** . "African buffalo".



(CC) BY-SA © unknown, Haplochromis?



(CC) BY © Stig Nygaard



(CC) MARK © Wikimedia Commons

Family: Giraffidae

Giraffa camelopardalis (Linnaeus, 1758) . Characteristics: herbivore; characteristic are the long legs and the very long neck; the whitish-yellow body is covered with brown patches that get darker as the animal ages; on top of the head are two short horns that are covered with black hair; they have a mane of short, stiff hair;. Biotope: savanna, scrubforest, grassland, woodland. (Cillié 1997: 96)

- **yǎmjà\yǎmjà-mbò** . "giraffe".
- **bàrá-yàmjà\yàmjà-mbò** . "giraffe".



Public Domain by Taa DoBeS team
(Boden/Güldemann/Naumann)



Public Domain by Taa DoBeS team
(Boden/Güldemann/Naumann)



Public Domain by Taa DoBeS team
(Boden/Güldemann/Naumann)

Family: Hippopotamidae

Hippopotamus amphibius Linnaeus, 1758 . Characteristics: herbivore; height: 150-165 cm; this very large semiaquatic animal is generally grey-brown but the belly and skinfolds are yellowish-pink; it has a very large mouth; the nostrils and the eyes are on top of the head; the ears are small and rounded;. Biotope: freshwater, swamps. (Cillié 1997: 106)

- **ɲátà\ɲátà-mbò** . "hippo".



Public Domain by Christfried Naumann



© Geoff Gallice

Family: Suidae

Phacochoerus africanus (Gmelin, 1788) . Characteristics: omnivore; the body is grey and sparsely covered with long bristles; there is a mane of dark hair with lighter tips; the adults have large tusks which curve over the broad snout; the males have larger tusks than the females and have three pairs of warts on the sides of the face; they run with their tail up;. Biotope: savanna, grassland, desert. (Cillié 1997: 92)

- **àliyà\àliyà-mbò** . "warthog (boar)".



© Geoff Gallice



(CC) BY-SA © Delphine Bruyere



(CC) PUBLICDOMAIN © Trisha M Shears

Order: Carnivora

Family: Canidae

[Canis adustus adustus](#) Sundevall, 1847 .

- **kèrè-ηgwě:\\-ηgwě:-mbó** . "side-striped jackal".

[Canis aureus](#) Linnaeus, 1758 .

- **gúndùmbéré\\gúndùbéré-mbò** . "golden jackal".



(CC) BY-SA © D. Gordon E. Robertson



(CC) BY-NC-SA © David Bygott



(CC) BY © Jeff Heath and the Dogon and Bangime Languages Project

[Lycaon pictus](#) (Temminck, 1820) . Characteristics: carnivore; height: 75cm; these canids have a short dark snout and large, round ears; the body and legs are white with yellow, brown and black blotches, the bushy tail is white; the pattern and colour differs among individuals; down the centre of the forehead is a dark stripe;. Biotope: savanna, forest, grassland, woodland. ([Cillié 1997](#): 130)

- **tùmbùlè kègélè\\kègél-mbò** . "wild dog".



(CC) BY © Michael Gäbler



(CC) BY-SA © Bart Swanson



(CC) BY-SA © Evan Summerson, Kaizerza

Vulpes pallida (Cretzschmar, 1826) .

- **yùrùgú\yùrùgú-mbó** . "sand fox, pale fox".



Public Domain by

Family: Felidae

Acinonyx jubatus (Schreber, 1775) . Characteristics: carnivore; height: 70-90 cm, the Cheetah is a large cat with long legs and a small head; the coat is yellowish-white with black spots; the ears are small and round; the Cheetah is the fastest land animal reaching speeds of more than 100 km/h; it can be distinguished from the Leopard by its longer legs and the characteristic tear marks extending from the eyes to the mouth;. Biotope: grassland, desert. ([Cillié 1997](#): 114)

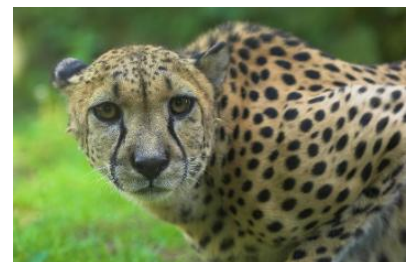
- **tà:-kólóndó\tà:-kólóndó-mbó** . "cheetah".



(CC) BY-SA © Paul Maritz



(CC) BY-SA © Malene Thyssen



(CC) BY-SA © Marcus T. Jaschen

Caracal caracal (Schreber, 1776) . Characteristics: carnivore; the coat is reddish-brown to brick-red, the belly and chest are white; this cat has remarkably strong hind legs and a short tail; the ears are large and pointed with large tufts of black hair, the back of the ear is black; they have black marks around the eyes and at the base of the whiskers;. Biotope: savanna, scrubforest, grassland, rocky area. (Cillié 1997: 116)

- **tàtúbà:** . "caracal, 13 kg (solitary)".



(CC) BY-SA © € Van 3000 [2] from belgium belgiske belgiuistan - United Tribes ov Europe



(CC) BY-NC-SA © David Bygott

Felis catus Linnaeus, 1758 .

- **gáṅà\gáṅà-mbò** . "cat (domestic)".



(CC) BY-SA ©



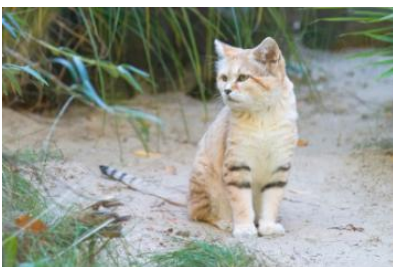
(CC) BY-SA ©



(CC) BY-SA ©

Felis margarita Loche, 1858 .

- **kèrè-gàṅà ?ó:lè** . "sand cat, 2-3 kg (sandy yellow, ears widely spaced)". Lit. "bush-cat yellow".



(CC) BY-SA ©



(CC) BY ©



(CC) BY-SA ©

[Leptailurus serval](#) (Schreber, 1776) . Characteristics: carnivore; height 55-65cm; the Serval is a slender cat with long legs, a small head and large rounded ears; the colour ranges from dull white to golden-yellow with black stripes down the neck and black spots on the body; it can be distinguished from the Cheetah by the lack of tear marks and the larger ears;. Biotope: savanna, forest, grassland. ([Cillié 1997](#): 118)

- **kèrè-gàṅà ìrà** . "serval cat, 12 kg (spotted; long legs, pointed ears)". Lit. "bush-cat spotted".



(CC) BY-SA © unknown



(CC) PUBLICDOMAIN © Stolz, Gary M.

[Panthera leo](#) (Linnaeus, 1758) . Characteristics: carnivore; height: 110-120 cm; the Lion is the largest cat in Africa and the only one where the males have manes, the colour of the mane ranges from blonde to black; the back of the round ears is black; the males are much larger than the females and have manes;. Biotope: savanna, scrubforest, forest, grassland, mountains. ([Cillié 1997](#): 110)

- **bà:ná: dòmbà\òmbà-mbò** . "lion".
- **yàrá\yàrá-mbó** . "lion".



(CC) BY ©



© Geoff Gallice



Public Domain by Taa DoBeS team

(Boden/Güldemann/Naumann)

[Panthera pardus](#) (Linnaeus, 1758) .

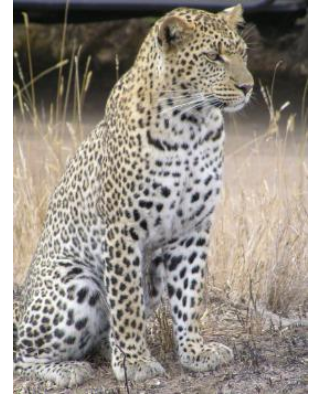
- **tǎ:\tǎ:-mbò** . "leopard".
- **tǐn-tà:\tǐn-tà:-mbò** . "leopard".



(CC) BY-SA © Haplochromis



(CC) BY-SA ©



(CC) BY-SA © user at project|JanErkamp|wikipedia|en

Family: Herpestidae

Galerella sanguinea (Rüppell, 1835) . Characteristics: omnivore; the colour of this Mongoose is usually correlated with the soil colour for camouflage and ranges from yellowish-grey to reddish; the long and upwards bent tail has a black tip;. (Cillié 1997: 152)

- **sènjèmbèlé** \sènjèmbèl-mbó . "slender mongoose (small, tip of tail black or red, less than 1 kg)".



(CC) BY-SA © Sara&Joachim



Public Domain by Andrew Smith (1797-1872)



(CC) BY © Jeff Heath and the Dogon and Bangime Languages Project

Herpestes ichneumon (Linnaeus, 1758) . Characteristics: carnivore; body-length: 50-60 cm; they have a long, low-slung form; the grey coat is dotted with brownish speckles; the tail ends with a black tassel;. Biotope: marshland, swamps. (Cillié 1997: 166)

- **síyá** \síyá-mbó . "Egyptian mongoose, ichneumon (large, to 4 kg)".



(CC) BY-SA © □□□□□□

Mungos mungo (Gmelin, 1788) . Characteristics: carnivore; body-length: 30-45 cm; the colour varies from light grey to reddish-brown with dark crossbands on the back; the ears are small and round; the snout is pointed;. Biotope: savanna, scrubforest, grassland, woodland, rocky area. ([Cillié 1997](#): 160)

- **dùnjùmá** \\ **dùnjùmá-mbó** . "banded mongoose (to 2 kg)".



(CC) BY-SA © unknown (JP)



(CC) BY-SA © unknown (JP)



Public Domain by Daderot

Family: Hyaenidae

Crocuta crocuta (Erxleben, 1777) . Characteristics: carnivore; height: 70-90 cm; the colour ranges from dull yellow to white, with irregular dark spots;it has a short mane and overall short hair; the animal has a large head with round ears, e strong neck and a sloping back;. Biotope: savanna,scrubforest, montane forest, grassland. ([Cillié 1997](#): 124)

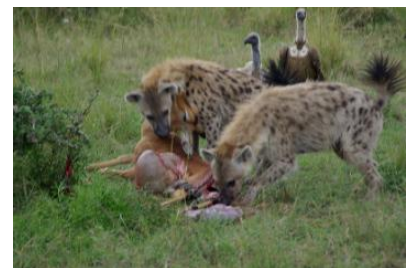
- **sórùwá:gè** \\ **sórùwá:gĩ-mbò** . "spotted hyena".



(CC) BY-SA © Gastrocycle



(CC) BY © Marieke Kuijpers



(CC) BY-SA © Jerry Friedman

Hyaena hyaena (Linnaeus, 1758) .

- **túmbúlé** \\ **túmbúl-mbó** . "striped hyena".



(CC) BY-NC-SA © David Bygott



(CC) BY © Simon J. Tonge



(CC) MARK © Beddard, Frank E. (Frank Evers),
1858-1925

Family: Mustelidae

[*Mellivora capensis*](#) (Schreber, 1776) . Characteristics: omnivore; height: 25-30cm; the body is black with a broad, greyish-white saddle on the back and head; the legs are short and equipped with sharp claws; the black tail is short; the ears are very small;. Biotope: savanna, forest, grassland. ([Cillié 1997](#): 140)

- **tílinjí** \ **tílinjí-mbó** . "ratel (honey badger)".



(CC) BY-SA ©



(CC) BY-SA © Matěj Bařha



(CC) MARK © Creator: Joseph Smit

Family: Viverridae

[*Genetta genetta*](#) (Linnaeus, 1758) . Characteristics: carnivore; this cat-like animal has a grey coat with black spots on it; the tail is very long and has grey and black rings, the tip is always white; the ears are very thin and rounded; each individual has a characteristic face mask;. Biotope: savanna, forest, scrubforest, grassland. ([Cillié 1997](#): 144)

- **kòròndó** \ **kòròndó-mbó** . "genet".



(CC) BY © Jeff Heath and the Dogon and Bangime Languages Project



(CC) BY © Jeff Heath and the Dogon and Bangime Languages Project



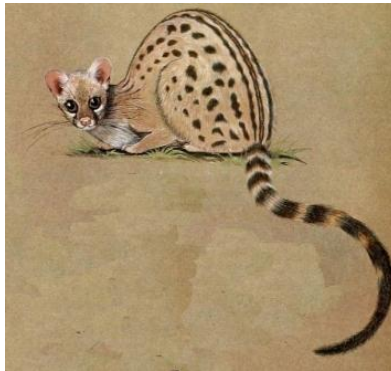
(CC) BY-SA © Liné1

[Genetta thierryi](#) Matschie, 1902 .

- túǵé\\túǵé-mbó . "Hausa genet".



(CC) BY-SA ©



(CC) BY-SA © Rosevear, Donovan Reginald

Order: Chiroptera

Family: Pteropodidae

[Rousettus aegyptiacus](#) (E. Geoffroy, 1810) . Characteristics: herbivore; body-length: 15cm, wing-span: 60cm; dark brown fur; pointy ears;. Biotope: savanna, forest, grassland. ([Cillié 1997](#): 207)

- wá:jù\\wá:jù-mbò . "blackish fruit bat sp.".



(CC) BY-SA © Artemy Voikhansky



(CC) BY-SA ©



(CC) BY-NC-SA © Description de l'Egypte, Book 34 (1826), Volume I - Planches : Histoire Naturelle.

Order: Erinaceomorpha

Family: Erinaceidae

[*Atelerix albiventris*](#) (Wagner, 1841) .

- ùl-jénjé\ùl-jénjé-mbó . "hedgehog".



(CC) BY © Jeff Heath and the Dogon and Bangime
Languages Project



(CC) BY © Jeff Heath and the Dogon and Bangime
Languages Project

Order: Hyracoidea

Family: Procaviidae

[*Procavia capensis ruficeps*](#) (Hemprich and Ehrenberg, 1832) .

- kóré\kór-mbó . "rock hyrax, dassie, 3-4 kg".



(CC) BY © Jeff Heath and the Dogon and Bangime
Languages Project

Order: Lagomorpha

Family: Leporidae

Lepus capensis Linnaeus, 1758 . Characteristics: herbivore; this typical hare has well developed hind legs for running and leaping; the ears as well as the eyes are large; the colour of the coat varies from light brown to reddish to sandy grey; the females are larger than the males;. Biotope: grassland, desert. ([Cillié 1997](#): 186)

- **jòmè ò:là\ò:là-mbò** . "hare variety (darker, bigger)". Lit. "hare yellow".
- **jòmè píìlè\píìlè-mbò** . "hare variety (lighter-colored, smaller)". Lit. "hare white".
- **jòmè kèràwà\kèràwà-mbò** . "hare variety (multicolored)".
- **jómé\jós:-mbó** . "hare (all forms)".



(CC) BY-SA © benjamint



(CC) MARK © Creator:Joseph Smit



(CC) BY-SA © Haplochromis

Order: Primates

Family: Cercopithecidae

Erythrocebus patas (Schreber, 1774) .

- **òmélè\òmèl-mbò** . "patas monkey".



(CC) BY-SA ©



(CC) BY ©



(CC) BY-SA © Brocken Inaglory

Papio anubis (Lesson, 1827) .

- **kwè:\kǒy-mbò** . "baboon".



(CC) BY-NC-SA © Gerald and Buff Corsi



(CC) BY-NC-SA © Gerald and Buff Corsi



(CC) BY © Simon J. Tonge

Order: Proboscidea

Family: Elephantidae

[*Loxodonta africana*](#) (Blumenbach, 1797) . Characteristics: herbivore; height: 3-3,75m; the African Bush elephant has large flat ears; its trunk ends with two opposing extensions; both sexes have large tusks; females are smaller and have smaller tusks;. Biotope: savanna, marshland, forest, grassland, desert, swamps. ([Cillié 1997](#): 100)

- táṅkúndé\\táṅkúndú-mbó . "elephant".



(CC) BY-SA © nickandmel2006



Public Domain by Gorgo

Order: Rodentia

Family: Hystricidae

[*Hystrix cristata*](#) Linnaeus, 1758 .

- kèmilè\\kèmilè-mbò . "porcupine".



(CC) BY-SA ©



(CC) MARK © creator:Thomas Hardwicke



(CC) BY-NC-SA © David Bygott

Family: Muridae

[Acomys johannis](#) .

- òè: ùl-jénjé\\ùl-jénjé-mbó . "spiny-haired mouse sp."
- bà:nâ: òè:\\òy-mbè . "spiny-haired mouse sp."
- dòlê: òè:\\òy-mbò . "spiny-haired mouse sp."



(CC) BY © Jeff Heath and the Dogon and Bangime
Languages Project



(CC) BY © Jeff Heath and the Dogon and Bangime
Languages Project

[Arvicanthis niloticus](#) (Desmarest, 1822) .

- kéré òè:\\òy-mbò . "unstriped grass rat (diurnal)".



(CC) BY © Jeff Heath and the Dogon and Bangime
Languages Project



(CC) BY © Jeff Heath and the Dogon and Bangime
Languages Project



(CC) BY © Jeff Heath and the Dogon and Bangime
Languages Project

Cricetomys gambianus Waterhouse, 1840 . Characteristics: omnivore; total length: 80 cm, tail-length: 40 cm; grey-brown fur on the back, belly lighter; long naked tail which is white towards the end; dark eye-ring; long thin ears;. Biotope: savanna, forest, grassland. ([Stuart and Stuart 2007](#): 108)

- **gùjè-gùjé\gùjù-gùjú-mbó** . "giant pouched rat (about 2 kilos)".



(CC) BY-SA ©



(CC) BY-SA ©



(CC) BY © Jeff Heath and the Dogon and Bangime
Languages Project

Mastomys natalensis (Smith, 1834) . Characteristics: herbivore; length: 24cm, tail-length: 11cm; underparts paler than upperparts, females have up to 12 pairs of nipples. Biotope: savanna, forest, shrubland, human settlement. ([Stuart and Stuart 2007](#): 126)

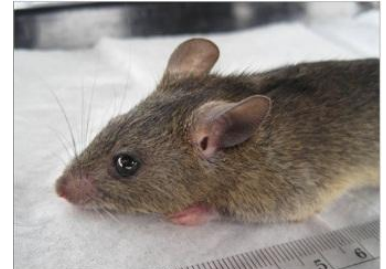
- **òlò òè: bīnī:\bīn-bó** . "African soft-furred rat (grey or black form)".



(CC) BY © Jeff Heath and the Dogon and Bangime
Languages Project



(CC) BY ©



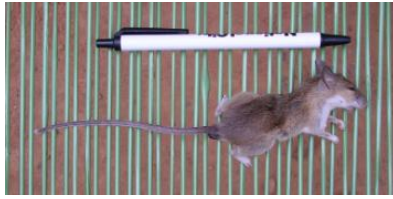
(CC) BY ©

Myomys daltoni (Thomas, 1892) .

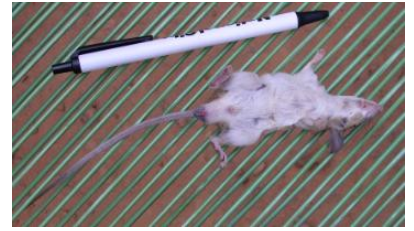
- **òlò òè: kègèlè\kègèl-mbò** . "Dalton's mouse (small, light-colored, belly white, tail longer than body, in field or houses, can climb)".



(CC) BY © Zbyszek Boratynski



(CC) BY © Jeff Heath and the Dogon and Bangime Languages Project



(CC) BY © Jeff Heath and the Dogon and Bangime Languages Project

Family: Sciuridae

[*Heliosciurus gambianus*](#) (Ogilby, 1835) .

- **šimâ:** \\šimâ:-mbò . "Gambian sun squirrel (arboreal)".



(CC) BY © N3ddo!



(CC) BY © N3ddo!

Order: Soricomorpha

Family: Soricidae

[*Crocidura cinderella*](#) Thomas, 1911 .

- **òè:** kélé \\òy-mbò kél-mbó . "tiny white-toothed shrew sp.".



(CC) BY © Jeff Heath and the Dogon and Bangime Languages Project

Order: Tubulidentata

Family: Orycteropodidae

[*Orycteropus afer*](#) (Pallas, 1766) . Characteristics: insectivore; height: 60 cm; this animal has a long pig-like snout, large, erect ears and a thick tail; most of the body is naked, only the legs are covered with dark hair; the forefeet have strong claws for digging; it has a long (30 cm), sticky tongue which allows it to catch termites and ants;. Biotope: savanna, grassland. ([Cillié 1997](#): 172)

- àlmàndá\\àlmàndá-mbó . "aardvark, 50 kg".



Public Domain by Christfried Naumann



(CC) BY-SA ©



(CC) BY-SA ©

Class: Reptilia

Order: Crocodylia

Family: Crocodylidae

[*Crocodylus niloticus*](#) Laurenti, 1768 .

- áńá\\áńá-mbó . "Nile crocodile".



(CC) BY-SA © MathKnight and Zachi Evenor



(CC) BY-SA © Marco Schmidt



(CC) BY-SA © Atamari

Order: Squamata

Family: Agamidae

[Agama sankaranica](#) Chabanaud, 1918 .

- gwǎ: tǐngà\\tǐngà-mbò . "ground-dwelling agama lizard sp."



(CC) BY © Jeff Heath and the Dogon and Bangime
Languages Project



(CC) BY © Jeff Heath and the Dogon and Bangime
Languages Project



(CC) BY © Jeff Heath and the Dogon and Bangime
Languages Project

[Uromastyx geyri](#) Müller, 1922 .

- dùmínà\\dùmínà-mbò . "spiny-tailed lizard sp."
- dǔnnà\\dǔnnà-mbò . "spiny-tailed lizard sp."



(CC) BY-SA ©



(CC) BY-SA ©



(CC) BY © Jeff Heath and the Dogon and Bangime
Languages Project

Family: Atractaspididae

[Atractaspis watsoni](#) Boulenger, 1908 .

- òjú-pùrù-dúnjù\\-dúnjù-mbò . "mole viper"



(CC) BY © Jeff Heath and the Dogon and Bangime
Languages Project



(CC) BY © Jeff Heath and the Dogon and Bangime
Languages Project



(CC) BY © Jeff Heath and the Dogon and Bangime
Languages Project

Family: Boidae

[*Gongylophis muelleri*](#) Angel, 1938 .

- **mìnè-béndé** \\ **mìnè-béndú-mbó** . "sand boa, thick-bodied venomous snake sp."



(CC) BY © Jeff Heath and the Dogon and Bangime
Languages Project



(CC) BY © Jeff Heath and the Dogon and Bangime
Languages Project



(CC) BY © Jeff Heath and the Dogon and Bangime
Languages Project

[*Python sebae*](#) (Gmelin, 1789) .

- **mìnè** \\ **mǐn-bó** . "rock python".
- **mìnè tòndí-mínà** . "very long rock python (rare)".
- **kùndù-mínà** . "very long rock python (rare)".

<http://tsammalex.clld.org/>



(CC) BY-SA © Joachim Huber



(CC) BY © Tigerpython



(CC) MARK © Sir Andrew Smith

Family: Chamaeleonidae

[*Chamaeleo africanus*](#) Laurenti, 1768 .

- **sà-nà-[kèrè-ndé]** \\ **sà-nà-[kèrè-ndé-mbó]** . "chameleon".



(CC) BY © Jeff Heath and the Dogon and Bangime
Languages Project



(CC) BY © Jeff Heath and the Dogon and Bangime
Languages Project



(CC) BY © Jeff Heath and the Dogon and Bangime
Languages Project

Family: Colubridae

[*Psammophis elegans*](#) (Shaw, 1802) .

- **sè-kíndiyé** \\ **sòŋ-kíndiyé-mbó** . "arboreal colubrid snake sp.".



(CC) BY © Jeff Heath and the Dogon and Bangime
Languages Project



(CC) BY © Jeff Heath and the Dogon and Bangime
Languages Project



(CC) BY © Jeff Heath and the Dogon and Bangime
Languages Project

[Psammophis sibilans](#) (Linnaeus, 1758) .

- **dòlòm-pô** \ \ **dòlòm-pô:-mbò** . "terrestrial colubrid snake sp."



(CC) BY © Jeff Heath and the Dogon and Bangime Languages Project



(CC) BY © Jeff Heath and the Dogon and Bangime Languages Project



(CC) BY-SA ©

Family: Elapidae

[Naja haje](#) (Linnaeus, 1758) .

- **sóló-kògójò** \ \ **sóló-kògójò:-mbò** . "Egyptian cobra".



Public Domain by John Walker, Head



(CC) BY © Jeff Heath and the Dogon and Bangime Languages Project



Public Domain by Ltshears

[Naja nigricollis](#) Reinhardt, 1843 .

- **[kòngò jàlà-ngò] jémè-ngò** \ \ **[bòmbò jàlà:-mbò] jê:-mbòm** . "spitting cobra".
- **àsánáná** . "spitting cobra".
- **sàánánà** \ \ **sàánánà:-mbò** . "spitting cobra (form with red bands under neck)".



(CC) BY © Luca Boldrini



(CC) BY © Jeff Heath and the Dogon and Bangime Languages Project

Family: Gekkonidae

[Ptyodactylus ragazzii](#) Anderson, 1898 .

- **gènà-pèndú\\gènà-pèndú-mbó** . "fan-footed house gecko".



(CC) BY © Jeff Heath and the Dogon and Bangime Languages Project



(CC) BY © Jeff Heath and the Dogon and Bangime Languages Project

Family: Scincidae

[Chalcides ocellatus](#) (Forskål, 1775) .

- **èndè: kîndè-kîndò:\\-mbò** . "spotted skink sp. (thick body, very short legs)".



(CC) BY © Jeff Heath and the Dogon and Bangime Languages Project

[Trachylepis quinquetaeniata](#) (Lichtenstein, 1823) .

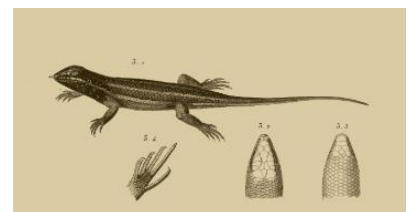
- **sîndè\\sîndî-mbò** . "five-lined skink".



(CC) BY-NC-SA © cultnat



(CC) BY © Jeff Heath and the Dogon and Bangime Languages Project



(CC) BY-NC-SA © Description de l'Égypte, Book 34 (1826), Volume I - Planches : Histoire Naturelle.

Family: Varanidae

[Varanus griseus](#) (Daudin, 1803) .

- ñgùlé\\ñgùl-mbó . "grey monitor lizard (very long tail, terrestrial)".



(CC) PUBLICDOMAIN © Omid Mozaffari



(CC) BY-NC-SA © cultnat



(CC) BY-NC-SA © Description de l'Egypte, Book 34 (1826), Volume I - Planches : Histoire Naturelle.

[Varanus niloticus](#) (Linnaeus, 1766) .

- àñàmí:\\àñàmí:-mbò . "Nile monitor lizard (climbs trees near water)".



(CC) BY © Simon J. Tonge



Public Domain by Alexis Naumann



(CC) BY-NC-SA © Description de l'Egypte, Book 34 (1826), Volume I - Planches : Histoire Naturelle.

Family: Viperidae

[Bitis arietans](#) (Merrem, 1820) .

- dùgú dòmbà\\dòmbà-mbò . "puff adder".



(CC) BY-NC-SA © Gerald and Buff Corsi



Public Domain by Alexis Naumann



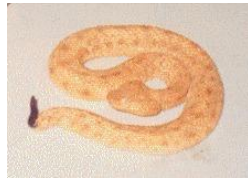
Public Domain by Alexis Naumann

Cerastes vipera (Linnaeus, 1758) .

- [kòngò jàlà-ɲgò] bùndè-òmê:\\ [bòmò jàlà-mbò] bùndè- [òmê:-mbò] . "sand viper".



(CC) BY-SA © LA Dawson



(CC) BY © Jeff Heath and the Dogon and Bangime Languages Project

Echis leucogaster Roman, 1972 .

- kòjè gĩndé:\\kòjù-mbò gĩndó: . "viper sp.".
- pègèlô: kòjè\\kòjè-mbò . "viper sp.".



(CC) BY © Jeff Heath and the Dogon and Bangime Languages Project



(CC) BY © Jeff Heath and the Dogon and Bangime Languages Project



(CC) BY © Jeff Heath and the Dogon and Bangime Languages Project

Echis ocellatus Stemmler, 1970 .

- kòjè kègèlè\\kòjù-mbò kègèl-mbò . "viper sp.".
- bòrô: kòjè\\kòjè-mbò . "viper sp.".



(CC) BY © Jeff Heath and the Dogon and Bangime Languages Project



(CC) BY © Jeff Heath and the Dogon and Bangime Languages Project



(CC) BY © Jeff Heath and the Dogon and Bangime Languages Project

Order: Testudines

Family: Pelomedusidae

[Pelomedusa subrufa](#) (Bonnaterre, 1789) .

- gàn-kírí\\gàṅkír-mbó . "small aquatic tortoise (rainy season)".



(CC) BY-SA © Ltshears



(CC) BY © Jeff Heath and the Dogon and Bangime Languages Project



(CC) BY © Jeff Heath and the Dogon and Bangime Languages Project

Family: Testudinidae

[Geochelone sulcata](#) (Miller, 1779) .

- gwí:\\gwí:-mbó . "giant tortoise (terrestrial)".



(CC) BY © Jeff Heath and the Dogon and Bangime Languages Project



(CC) BY © Jeff Heath and the Dogon and Bangime Languages Project



(CC) BY © Jeff Heath and the Dogon and Bangime Languages Project

Class: Sarcopterygii

Order: Lepidosireniformes

Family: Protopteridae

[Protopterus annectens](#) (Owen, 1839) .

- ǐjǐ-ṅwě:\\ǐjù:-[ṅwě:-mbó] . "African lungfish". Lit. "fish-dog".



(CC) BY ©



(CC) BY-SA ©



(CC) MARK © G.H.Ford

Kingdom: Fungi

Phylum: Basidiomycota

Class: Agaricomycetes

Order: Agaricales

Family: Agaricaceae

[Podaxis pistillaris](#) (L.) Fr. 1829 .

- [bòmbò jàlá-mbó] dàgè . "puffball". Lit. "snakes' medicine".



(CC) BY © Jeff Heath and the Dogon and Bangime

Languages Project



(CC) BY © Jeff Heath and the Dogon and Bangime

Languages Project



(CC) BY-NC-SA © Douglas Smith

Kingdom: Metazoa

Phylum: Arthropoda

Class: Arachnida

Order: Scorpiones

Family: Buthidae

[Androctonus amoreuxi](#) .

- **ĩjĩmĩn\\ĩjĩmĩn-bò** . "fat-tailed scorpion".



(CC) BY © Jeff Heath and the Dogon and Bangime Languages Project



(CC) BY © Jeff Heath and the Dogon and Bangime Languages Project



(CC) BY © Jeff Heath and the Dogon and Bangime Languages Project

Phylum: Chordata

Class: Reptilia

Order: Squamata

Family: Colubridae

[Bamanophis dorri](#) (Lataste, 1888) .

- **èndè-bòròndó\\èndè-bòròndó-mbó** . "colubrid snake sp.".



(CC) BY © Jeff Heath and the Dogon and Bangime Languages Project



(CC) BY © Jeff Heath and the Dogon and Bangime Languages Project



(CC) BY © Jeff Heath and the Dogon and Bangime Languages Project

Kingdom: Plantae

Phylum: Magnoliophyta

Class: Liliopsida

Order: Commelinales

Family: Commelinaceae

[Commelina forskalaei](#) .

- tégené-ηgó\\tégéné . "herb sp."



(CC) BY © Jeff Heath and the Dogon and Bangime
Languages Project



(CC) BY © Jeff Heath and the Dogon and Bangime
Languages Project



(CC) BY © Jeff Heath and the Dogon and Bangime
Languages Project

Order: Poales

Family: Poaceae

[Digitaria ciliaris var. ciliaris](#) .

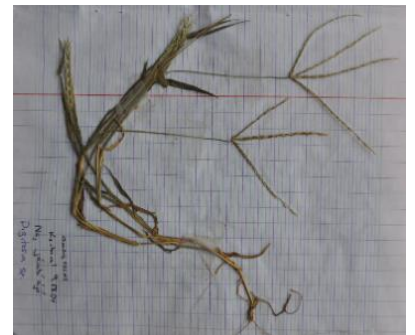
- jàmbè-àjà:\\jàmbè-àjê: . "grass sp."



(CC) BY © Jeff Heath and the Dogon and Bangime
Languages Project



(CC) BY © Jeff Heath and the Dogon and Bangime
Languages Project



(CC) BY © Jeff Heath and the Dogon and Bangime
Languages Project

Class: Magnoliopsida

Order: Brassicales

Family: Capparaceae

[Crataeva adansonii subsp. odora](#) .

- b̀̀r̀̀-̀̀l̀̀â: \b̀̀r̀̀-̀̀l̀̀ê: . "tree sp.". Lit. "garden-edible.leaf".



(CC) BY © Jeff Heath and the Dogon and Bangime
Languages Project



(CC) BY © Jeff Heath and the Dogon and Bangime
Languages Project



(CC) BY © Jeff Heath and the Dogon and Bangime
Languages Project

Order: Caryophyllales

Family: Molluginaceae

[Limeum pterocarpum var. pterocarpum](#) .

- [k̀̀l̀̀-̀̀j̀̀m̀̀b̀̀) -d̀̀g̀̀è . "herb sp.". Lit. "[stomach-sickness]-medicine".



(CC) BY © Jeff Heath and the Dogon and Bangime
Languages Project



(CC) BY © Jeff Heath and the Dogon and Bangime
Languages Project



(CC) BY © Jeff Heath and the Dogon and Bangime
Languages Project

Order: Cucurbitales

Family: Cucurbitaceae

[Cucumis melo subsp. agrestis var. agrestis Naudin](#) .

- k̀̀nd̀̀- [k̀̀l̀̀nd̀̀-̀̀g̀̀) \k̀̀nd̀̀-̀̀l̀̀nd̀̀ . "wild melon sp.".



(CC) BY © Jeff Heath and the Dogon and Bangime
Languages Project



(CC) BY © Jeff Heath and the Dogon and Bangime
Languages Project



(CC) BY © Jeff Heath and the Dogon and Bangime
Languages Project

Order: Garryales

Family: Garryaceae

[Grewia flavescens var flavescens](#) .

- [tàngkùndù-mbò] -nùmě: . "shrub sp.". Lit. "elephants-hands".



(CC) BY © Jeff Heath and the Dogon and Bangime
Languages Project



(CC) BY © Jeff Heath and the Dogon and Bangime
Languages Project



(CC) BY © Jeff Heath and the Dogon and Bangime
Languages Project

Order: Lamiales

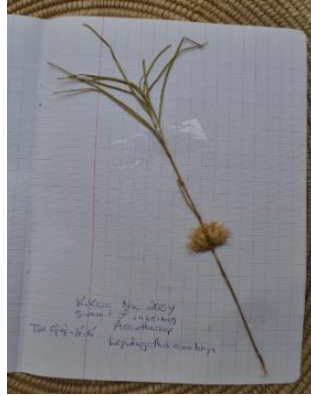
Family: Acanthaceae

[Lepidagathis anobrya](#) Nees .

- gàndà-mbò sǎ:mè . "herb sp.".



(CC) BY-NC-SA © Research Institute Senckenberg



(CC) BY © Jeff Heath and the Dogon and Bangime

Languages Project



(CC) BY © Jeff Heath and the Dogon and Bangime

Languages Project

Family: Lamiaceae

Endostemon tereticaulis (Poir.) M.R.Ashby .

- sà̀nà̀n`è:-mbò dà̀bà`\\dà̀bà-mbò . "herb sp.". Lit. "mosquitoes' hoe".
- gĩ̀rè-nĩ̀gĩ̀lè yà̀wó: . "herb sp.".



(CC) BY © Jeff Heath and the Dogon and Bangime

Languages Project



(CC) BY-NC © Bart Wursten



(CC) BY-NC © Bart Wursten

Vitex madiensis subsp. madiensis Oliv. .

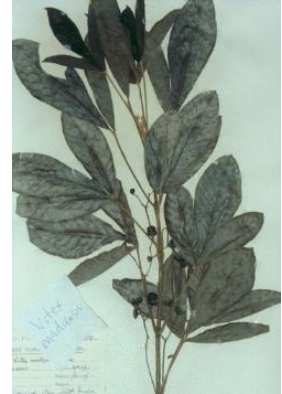
- tà̀bà̀là-mĩ̀n-gó . "tree sp.".



(CC) BY © Jeff Heath and the Dogon and Bangime
Languages Project



(CC) BY © Jeff Heath and the Dogon and Bangime
Languages Project



(CC) BY © Jeff Heath and the Dogon and Bangime
Languages Project

Order: Laurales

Family: Hernandiaceae

[*Gyrocarpus americanus subsp. pinnatilobus*](#) .

- ðmbó-ðmbó\\ðmbó-ðmbé . "tree sp."

Order: Malpighiales

Family: Malpighiaceae

[*Acridocarpus monodii*](#) Arènes & P.Jaeger ex Birnbaum & J.Florence .

- wàmbá-níyé-ηgó\\wàmbá-níyé . "shrub sp."

Order: Malvales

Family: Malvaceae

[*Bombax costatum*](#) Pellegrin & Vuillet .

- ́rò-búbù\\́rò-búbì . "tree sp."
- dùrù-t́ńólé-ηgó\\dùrù-t́ńólé . "tree sp."



(CC) BY © Jeff Heath and the Dogon and Bangime
Languages Project



(CC) BY © Jeff Heath and the Dogon and Bangime
Languages Project

[Cienfuegosia digitata](#) Cav. .

- **tágábàl** . "prostrate herb sp."



(CC) BY © Jeff Heath and the Dogon and Bangime
Languages Project



(CC) BY © Jeff Heath and the Dogon and Bangime
Languages Project



(CC) BY © Jeff Heath and the Dogon and Bangime
Languages Project

[Grewia lasiodiscus](#) K. Schum. .

- **òbà-kágìjà**:\òbà-kágìjè: . "shrub sp."



(CC) BY-NC-SA © Research Institute Senckenberg



(CC) BY-NC-SA © Research Institute Senckenberg



(CC) BY © Jeff Heath and the Dogon and Bangime
Languages Project

[Grewia tenax \(Forsk.\) Fiori](#) .

- [nĩ:-mbò] -nàmâ: . "shrub sp."
- [nĩ:-mbò] - [nà:-gó] \\-nã: . "shrub sp."



(CC) BY © Jeff Heath and the Dogon and Bangime Languages Project



(CC) BY © Jeff Heath and the Dogon and Bangime Languages Project



(CC) BY © Jeff Heath and the Dogon and Bangime Languages Project

Order: Myrtales

Family: Combretaceae

[Combretum aculeatum](#) Vent. .

- bègĩná-ŋgó \\bègĩná . "shrub sp."



(CC) BY © Jeff Heath and the Dogon and Bangime Languages Project



(CC) BY © Jeff Heath and the Dogon and Bangime Languages Project



(CC) BY © Jeff Heath and the Dogon and Bangime Languages Project

[Terminalia macroptera](#) Guill. & Perr. .

- kò:gó: \\kò:gé: . "tree sp."



(CC) BY © Jeff Heath and the Dogon and Bangime
Languages Project



(CC) BY © Jeff Heath and the Dogon and Bangime
Languages Project



(CC) BY © Jeff Heath and the Dogon and Bangime
Languages Project

Order: Rosales

Family: Cannabaceae

[Celtis toka](#) (Forssk.) F.N. Hepper & J.R.I. Wood .

- pīlú:\\pīlī: . "tree sp."



(CC) BY © Jeff Heath and the Dogon and Bangime
Languages Project



(CC) BY © Jeff Heath and the Dogon and Bangime
Languages Project



(CC) BY-NC-SA © Marco Schmidt

Family: Moraceae

[Ficus cordata subsp. lecardii C.C. Berg](#) .

- ènjé-ènjù:\\ènjé-ènjī: . "fig tree sp."



(CC) BY © Jeff Heath and the Dogon and Bangime Languages Project



(CC) BY © Jeff Heath and the Dogon and Bangime Languages Project



(CC) BY © Jeff Heath and the Dogon and Bangime Languages Project

Order: Sapindales

Family: Anacardiaceae

[Lannea microcarpa](#) Engl. & K. Krause .

- kùrà:\\kùrê: . "wild grape ree".



(CC) BY-NC-SA © Research Institute Senckenberg



(CC) BY © Jeff Heath and the Dogon and Bangime Languages Project



(CC) BY © Jeff Heath and the Dogon and Bangime Languages Project

Order: Solanales

Family: Convolvulaceae

[Ipomoea coscinosperma](#) Hochst. ex Choisy .

- tóndé-ḡó\\tóndé . "trailing vine sp".



(CC) BY © Jeff Heath and the Dogon and Bangime Languages Project



(CC) BY © Jeff Heath and the Dogon and Bangime Languages Project



(CC) BY © Jeff Heath and the Dogon and Bangime Languages Project

Phylum: Tracheophyta

Class: Liliopsida

Order: Alismatales

Family: Araceae

[Amorphophallus baumannii](#) (Engl.) N.E.Br. .

- mǐnè-sàmbé . "tiger lily, herb sp.". Lit. "...-arrow".



(CC) BY © Jeff Heath and the Dogon and Bangime Languages Project



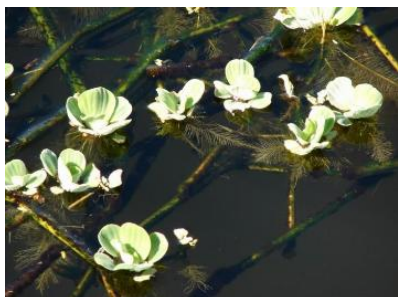
(CC) BY © Jeff Heath and the Dogon and Bangime Languages Project



(CC) BY © Jeff Heath and the Dogon and Bangime Languages Project

[Pistia stratiotes](#) L. .

- bómbór-ɲgó\\bómbóré . "water lettuce".
- [ɲgé kùl] bòmbèrè . "water lettuce". Lit. "[water in] vine".



(CC) BY © Forest & Kim Starr



(CC) BY © Forest & Kim Starr



(CC) BY-NC © Bart Wursten

Stylochaeton lancifolius .

- **jòmè-súnù**: [jò:-mbò] -súnĩ: . "herb sp.". Lit. "hare-ear".



(CC) BY © Jeff Heath and the Dogon and Bangime Languages Project



(CC) BY-NC-SA © Research Institute Senckenberg



(CC) BY-NC-SA © Research Institute Senckenberg

Order: Arecales

Family: Arecaceae

Borassus aethiopum Mart. .

- **sím-gò** \\sím . "palm sp.".



(CC) BY © Jeff Heath and the Dogon and Bangime
Languages Project



(CC) BY © Jeff Heath and the Dogon and Bangime
Languages Project



(CC) BY © Jeff Heath and the Dogon and Bangime
Languages Project

Hyphaene thebaica (L.) Mart. .

- **màgâ:\màgê:** . "doum palm".



(CC) BY © Jeff Heath and the Dogon and Bangime
Languages Project



(CC) BY-NC-SA © Bibliotheca Alexandrina - EOL Ar



(CC) BY © Jeff Heath and the Dogon and Bangime
Languages Project

Order: Asparagales

Family: Amaryllidaceae

Crinum ornatum (Aiton) Herb. .

- **b̀̀r̀̀-̀̀égá:\b̀̀r̀̀-̀̀égé:** . "wild onion sp.". Lit. "garden-boundary.stones".



(CC) BY © Jeff Heath and the Dogon and Bangime
Languages Project



(CC) BY © Jeff Heath and the Dogon and Bangime
Languages Project



(CC) BY © Jeff Heath and the Dogon and Bangime
Languages Project

Pancratium trianthum Herb. .

- **kàrmàkà:jí-ŋgó** \\ **kàrmàkà:jí** . "wild onion sp."



(CC) BY © Jeff Heath and the Dogon and Bangime
Languages Project



(CC) BY © Jeff Heath and the Dogon and Bangime
Languages Project



(CC) BY © Jeff Heath and the Dogon and Bangime
Languages Project

Family: Asparagaceae

Asparagus flagellaris (Kunth) Baker .

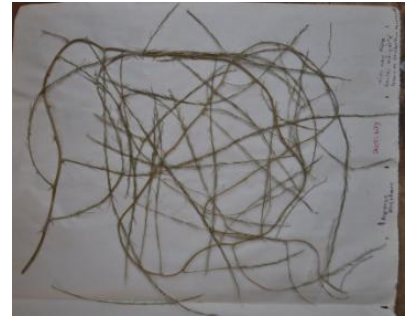
- **jómé pīndī:** \\ **[jó:-mbò] pīndù:** . "scrambling vine sp.". Lit. "hare's trap".



(CC) BY © Jeff Heath and the Dogon and Bangime Languages Project



(CC) BY © Jeff Heath and the Dogon and Bangime Languages Project



(CC) BY © Jeff Heath and the Dogon and Bangime Languages Project

Dipcadi viride (L.) Moench .

- **kàrmàkà:jí-ηgó** \ **kàrmàkà:jí** . "herb sp."
- **sànamàliyà-mbò ηgwè:** \ **ηgwè:-mbò** . "herb sp.". Lit. "Sanamaliya[man's name]'s dog".



(CC) BY © Jeff Heath and the Dogon and Bangime Languages Project



(CC) BY © Jeff Heath and the Dogon and Bangime Languages Project



(CC) BY © Jeff Heath and the Dogon and Bangime Languages Project

Sansevieria liberica Gérôme & Labroy .

- **kól-ηgó** \ **kól** . "agave sp."



(CC) BY-NC-SA © Research Institute Senckenberg



(CC) BY-NC-SA © Research Institute Senckenberg



(CC) BY © Jeff Heath and the Dogon and Bangime Languages Project

Family: Xanthorrhoeaceae

[Aloe tenuifolia](#) .

- kèréndè-ηgò\\kèréndè . "small aloe sp."



(CC) BY © Jeff Heath and the Dogon and Bangime
Languages Project



(CC) BY © Jeff Heath and the Dogon and Bangime
Languages Project



(CC) BY © Jeff Heath and the Dogon and Bangime
Languages Project

Order: Commelinales

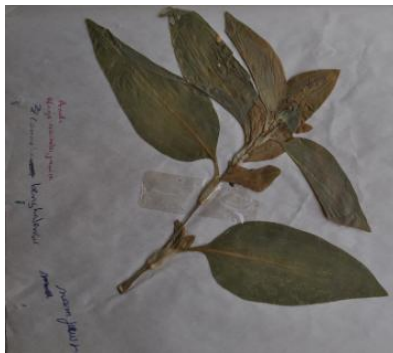
Family: Commelinaceae

[Commelina benghalensis benghalensis](#) .

- tégené-ηgó\\tégené . "herb sp."



(CC) BY © Jeff Heath and the Dogon and Bangime
Languages Project



(CC) BY © Jeff Heath and the Dogon and Bangime
Languages Project



(CC) BY © Jeff Heath and the Dogon and Bangime
Languages Project

[Cyanotis lanata](#) Benth. .

- pègòlò: tègènè . "herb sp."
- yàsìl-mbò énjé . "herb sp."



(CC) BY © Jeff Heath and the Dogon and Bangime Languages Project



(CC) BY © Jeff Heath and the Dogon and Bangime Languages Project



(CC) BY © Jeff Heath and the Dogon and Bangime Languages Project

Family: Pontederiaceae

[*Heteranthera callifolia*](#) Rchb. ex Kunth .

- [ɪŋgé kùl] tɔ̀ndè-ŋgò\ \tɔ̀ndè . "herb sp.". Lit. "[water in] vine".



(CC) BY © Jeff Heath and the Dogon and Bangime Languages Project



(CC) BY © Jeff Heath and the Dogon and Bangime Languages Project



(CC) BY © Jeff Heath and the Dogon and Bangime Languages Project

Order: Dioscoreales

Family: Dioscoreaceae

[*Tacca leontopetaloides*](#) (L.) Kuntze .

- mĩnsàmbú . "herb sp. with yam".



(CC) BY © Forest & Kim Starr



(CC) BY-NC-SA © Research Institute Senckenberg



(CC) BY-NC-SA © Research Institute Senckenberg

Order: Poales

Family: Cyperaceae

[Cyperus articulatus](#) L. .

- **něl gùlà: sàmbè** [clarify: "village's young.woman's arrow"] . "sedge sp."



(CC) BY © Jeff Heath and the Dogon and Bangime Languages Project



(CC) BY © Jeff Heath and the Dogon and Bangime Languages Project



(CC) BY © Jeff Heath and the Dogon and Bangime Languages Project

[Cyperus esculentus](#) L. .

- **gwè:-ngò sémbél-ngó** \ gwè: sémbélé . "sedge sp."



(CC) BY © Jeff Heath and the Dogon and Bangime Languages Project



(CC) BY © Jeff Heath and the Dogon and Bangime Languages Project



(CC) MARK © USDA NRCS PLANTS Database

[Cyperus rotundus](#) L. .

- g^wɛ:-sèmbèlè áné . "sedge sp."



(CC) BY © Jeff Heath and the Dogon and Bangime Languages Project



(CC) BY © Jeff Heath and the Dogon and Bangime Languages Project



(CC) BY © Jeff Heath and the Dogon and Bangime Languages Project

[Cyperus squarrosus](#) L. .

- gwè:-ɲò sémbél-ɲó\\gwè: sémbélé . "sedge sp."



(CC) BY © Jeff Heath and the Dogon and Bangime Languages Project



(CC) BY © Jeff Heath and the Dogon and Bangime Languages Project



(CC) BY © Jeff Heath and the Dogon and Bangime Languages Project

[Pycreus macrostachyos](#) (Lam.) J.Raynal .

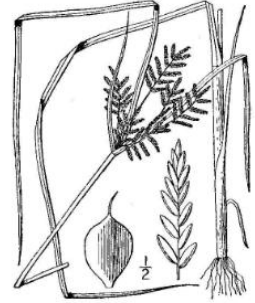
- gwè:-ngò sémbél-ngó\\gwè: sémbélé . "sedge sp."



(CC) BY © Jeff Heath and the Dogon and Bangime Languages Project



(CC) BY © Jeff Heath and the Dogon and Bangime Languages Project



(CC) MARK © USDA NRCS PLANTS Database

Family: Poaceae

[Andropogon gayanus bisquamulatus](#) .

- sábará-ngó\\sábará . "tall grass sp."



(CC) BY © Jeff Heath and the Dogon and Bangime Languages Project



(CC) BY © Jeff Heath and the Dogon and Bangime Languages Project



(CC) BY © Jeff Heath and the Dogon and Bangime Languages Project

[Aristida funiculata](#) Trin. & Rupr. .

- sésébé-ngó\\sésébé . "grass sp."



(CC) BY © Jeff Heath and the Dogon and Bangime
Languages Project



(CC) BY © Jeff Heath and the Dogon and Bangime
Languages Project



(CC) BY © Jeff Heath and the Dogon and Bangime
Languages Project

[Aristida mutabilis nigritiana](#) .

- **sésébé-ɲgó** \sésébé . "grass sp."



(CC) BY © Jeff Heath and the Dogon and Bangime
Languages Project



(CC) BY © Jeff Heath and the Dogon and Bangime
Languages Project



(CC) BY © Jeff Heath and the Dogon and Bangime
Languages Project

[Brachiaria lata](#) (Schumach.) C.E.Hubb. .

- **èmbà sàlàlà:** \èmbà sàlàlê: . "grass sp.". Lit. "sorghum long".



(CC) BY © Jeff Heath and the Dogon and Bangime
Languages Project



(CC) BY © Jeff Heath and the Dogon and Bangime
Languages Project



(CC) BY © Jeff Heath and the Dogon and Bangime
Languages Project

[Cenchrus biflorus](#) Roxb. .

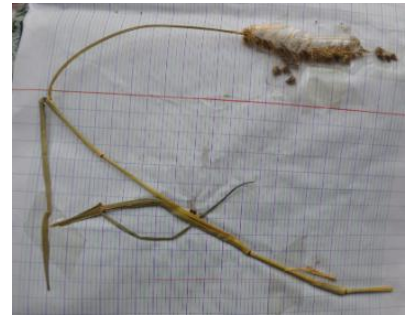
- **kólbú-ɲgó** \kólbé . "burrgrass".



(CC) BY © Jeff Heath and the Dogon and Bangime
Languages Project



(CC) BY © Jeff Heath and the Dogon and Bangime
Languages Project



(CC) BY © Jeff Heath and the Dogon and Bangime
Languages Project

Chrysopogon nigritanus (Benth.) Veldkamp .

- pé:jà:\pé:jé: . "tall, clumpy grass sp."



(CC) BY © Jeff Heath and the Dogon and Bangime
Languages Project



(CC) BY © Jeff Heath and the Dogon and Bangime
Languages Project



(CC) BY © Jeff Heath and the Dogon and Bangime
Languages Project

Cymbopogon caesius giganteus .

- sàbàrà-[ǎy-ŋó]\-ày"é . "giant lemon grass sp."



(CC) BY © Jeff Heath and the Dogon and Bangime
Languages Project



(CC) BY © Jeff Heath and the Dogon and Bangime
Languages Project



(CC) BY © Jeff Heath and the Dogon and Bangime
Languages Project

[Cymbopogon schoenanthus](#) (L.) Spreng. .

- **sàbàrà-** [ǎy-ŋgó] \\-àý"é . "lemon grass sp."



(CC) BY © Jeff Heath and the Dogon and Bangime
Languages Project



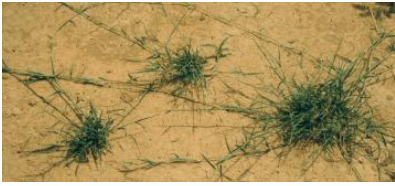
(CC) MARK © Jose Hernandez



(CC) BY-NC © Edinburgh!

[Cynodon dactylon](#) (L.) Pers. .

- **kèrkèjì** . "couch grass (Bermuda grass)".



(CC) BY © Jeff Heath and the Dogon and Bangime Languages Project



(CC) BY © Jeff Heath and the Dogon and Bangime Languages Project



(CC) BY © Jeff Heath and the Dogon and Bangime Languages Project

Dactyloctenium aegyptium (L.) Willd. .

- **négè-ηgò\\négè** . "grass sp."



(CC) BY © Jeff Heath and the Dogon and Bangime Languages Project



(CC) BY © Jeff Heath and the Dogon and Bangime Languages Project



(CC) BY © Jeff Heath and the Dogon and Bangime Languages Project

Diheteropogon hagerupii Hitchc. .

- **kĩr-gá: sàmbè\\kĩr-gá: sàmbù** . "grass sp."



(CC) BY © Jeff Heath and the Dogon and Bangime Languages Project



(CC) BY © Jeff Heath and the Dogon and Bangime Languages Project



(CC) BY © Jeff Heath and the Dogon and Bangime Languages Project

Echinochloa colona (L.) Link .

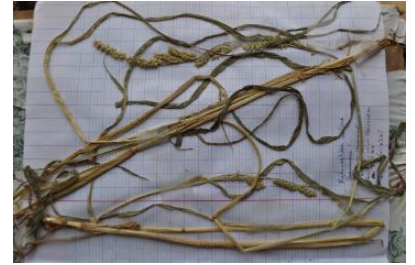
- **gánjú:** = **gánjú-ηgó\gánjí** . "grass sp."
- **ηgέ-kùl gánjí** . "grass sp."



(CC) BY © Jeff Heath and the Dogon and Bangime
Languages Project



(CC) BY © Jeff Heath and the Dogon and Bangime
Languages Project



(CC) BY © Jeff Heath and the Dogon and Bangime
Languages Project

Echinochloa pyramidalis (Lam.) Hitchc. & Chase .

- **búrgù\búrgĩ** . "tall grass sp."



(CC) BY © Jeff Heath and the Dogon and Bangime
Languages Project



(CC) BY © Jeff Heath and the Dogon and Bangime
Languages Project



(CC) BY © Jeff Heath and the Dogon and Bangime
Languages Project

Echinochloa stagnina (Retz.) P.Beauv. .

- **búrgù\búrgĩ** . "tall grass sp. (bourgou)".



(CC) BY © Jeff Heath and the Dogon and Bangime Languages Project



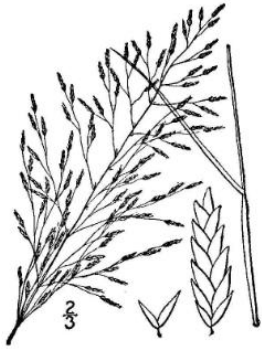
(CC) BY © Jeff Heath and the Dogon and Bangime Languages Project



(CC) BY © Jeff Heath and the Dogon and Bangime Languages Project

[Eragrostis pilosa](#) (L.) P.Beauv. .

- **píléndé-ηgó\píléndé** . "grass sp."



(CC) MARK © USDA NRCS PLANTS Database



(CC) MARK © Tracey Slotta



(CC) BY © Jeff Heath and the Dogon and Bangime Languages Project

[Eragrostis tremula](#) Hochst. ex Steud. .

- **òbùl-mbò [kĩ: pìlè]** . "grass sp."



(CC) BY © Jeff Heath and the Dogon and Bangime Languages Project



(CC) BY © Jeff Heath and the Dogon and Bangime Languages Project



(CC) BY © Jeff Heath and the Dogon and Bangime Languages Project

[Oryza barthii](#) A.Chev. .

- ð:rè-sámálá . "wild rice sp."



(CC) BY © Jeff Heath and the Dogon and Bangime Languages Project



(CC) BY © Jeff Heath and the Dogon and Bangime Languages Project



(CC) BY © Jeff Heath and the Dogon and Bangime Languages Project

[Oxytenanthera abyssinica](#) (A.Rich.) Munro .

- ĵim-kújá:\ĵim-kújé: . "bamboo".



(CC) BY-NC-SA © Research Institute Senckenberg



(CC) BY-NC-SA © Research Institute Senckenberg



(CC) BY © Jeff Heath and the Dogon and Bangime Languages Project

[Panicum laetum](#) Kunth .

- gwǎ:-ŋgò\gwǎ: . "wild fonio (grass)".
- gwǎ:\gwě: . "wild fonio (grass)".



(CC) BY © Jeff Heath and the Dogon and Bangime Languages Project



(CC) BY-NC-SA © Missouri BG!



(CC) BY © Jeff Heath and the Dogon and Bangime Languages Project

Panicum subalbidum Kunth .

- **bàn-dúlò**:\ [bà-mbò] -dúlè: . "tall grass sp."



(CC) BY © Jeff Heath and the Dogon and Bangime Languages Project



(CC) BY © Jeff Heath and the Dogon and Bangime Languages Project



(CC) BY © Jeff Heath and the Dogon and Bangime Languages Project

Pennisetum pedicellatum Trin. .

- **sòm-bòròndé-ηγó**\sòm-bòròndé . "grass sp."



(CC) BY-NC-SA © Research Institute Senckenberg



(CC) BY © Jeff Heath and the Dogon and Bangime Languages Project



(CC) BY © Jeff Heath and the Dogon and Bangime Languages Project

[Phragmites karka](#) (Retz.) Trin. ex Steud. .

- búrgù\\búrgĩ . "tall grass sp."



(CC) BY © Jeff Heath and the Dogon and Bangime
Languages Project

[Rottboellia cochinchinensis](#) (Lour.) Clayton .

- sàkòré-ηó\\sàkòré . "tall grass sp."



(CC) BY © Jeff Heath and the Dogon and Bangime
Languages Project



(CC) BY-NC © Bart Wursten



(CC) BY © Jeff Heath and the Dogon and Bangime
Languages Project

[Schoenefeldia gracilis](#) Kunth .

- gànà-dúlè\\ [gànà-mbò] -dúlè: . "grass sp."



(CC) BY-NC-SA © Research Institute Senckenberg



(CC) BY-NC-SA © Research Institute Senckenberg



(CC) BY © Jeff Heath and the Dogon and Bangime
Languages Project

Sorghum arundinaceum (Desv.) Stapf .

- èmbà sàlàlá:\èmbà sàlàlê : "grass sp."



(CC) BY-NC © Petra Ballings



(CC) BY-NC © Petra Ballings



(CC) BY © Jeff Heath and the Dogon and Bangime Languages Project

Sporobolus festivus Hochst. ex A.Rich. .

- [sànaŋwè:-mbò] - [dĩmbĩr-ĩ:] . "grass sp."



(CC) BY-NC © Sune Holt



(CC) BY-NC © Sune Holt



(CC) BY-NC © Sune Holt

Tripogon minimus (A.Rich.) Hochst. ex Steud. .

- dīmīlè-ŋgò\dīmīlè . "tiny grass sp."



(CC) BY-NC-SA © Research Institute Senckenberg



(CC) BY © Jeff Heath and the Dogon and Bangime

Languages Project



(CC) BY © Jeff Heath and the Dogon and Bangime

Languages Project

Class: Magnoliopsida

Order: Asterales

Family: Asteraceae

[Acanthospermum hispidum](#) .

- **bàmbàrà-mùdī** . "prickly herb sp."



(CC) BY © Jeff Heath and the Dogon and Bangime

Languages Project



(CC) BY © Jeff Heath and the Dogon and Bangime

Languages Project

[Kleinia cliffordiana](#) .

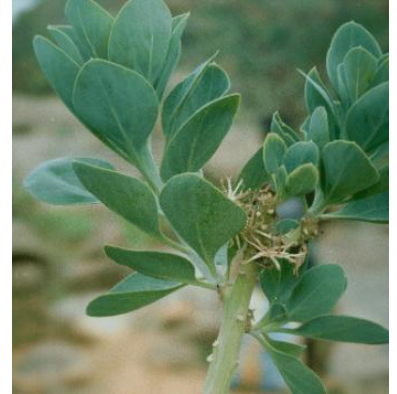
- **kèrètùnjà-mbò bǎyè** . "bush sp."



(CC) BY © Jeff Heath and the Dogon and Bangime
Languages Project



(CC) BY © Jeff Heath and the Dogon and Bangime
Languages Project



(CC) BY © Jeff Heath and the Dogon and Bangime
Languages Project

Order: Boraginales

Family: Boraginaceae

[*Cordia sinensis*](#) Lam. .

- gàṅgó\\gàṅgé . "tree sp."



(CC) BY © Jeff Heath and the Dogon and Bangime
Languages Project



(CC) BY © Jeff Heath and the Dogon and Bangime
Languages Project



(CC) BY © Jeff Heath and the Dogon and Bangime
Languages Project

Order: Brassicales

Family: Capparaceae

[*Boscia senegalensis*](#) Lam. .

- èlô:\\èlê: . "shrub sp."



(CC) BY © Jeff Heath and the Dogon and Bangime Languages Project



(CC) BY © Jeff Heath and the Dogon and Bangime Languages Project



(CC) BY © Jeff Heath and the Dogon and Bangime Languages Project

[Capparis sepiaria](#) L. .

- **dàlséndèŋ** . "thorny liana sp."



(CC) BY © Jeff Heath and the Dogon and Bangime Languages Project



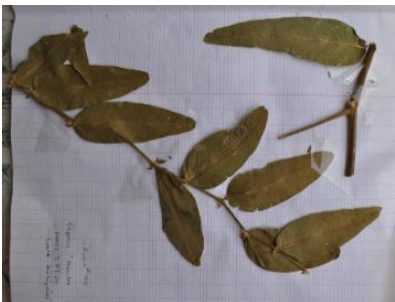
(CC) BY © Jeff Heath and the Dogon and Bangime Languages Project



(CC) BY © Jeff Heath and the Dogon and Bangime Languages Project

[Capparis tomentosa](#) Lam. .

- **[kwê: pùr] góndù** \\ **[kõy-mbò pùr] góndù** . "thorny liana sp." . Lit. "monkey-womb pull.off".



(CC) BY © Jeff Heath and the Dogon and Bangime Languages Project

[Maerua crassifolia](#) Forssk. .

- **súndù\|súndī** . "tree sp."



(CC) BY © Jeff Heath and the Dogon and Bangime
Languages Project



(CC) BY © Jeff Heath and the Dogon and Bangime
Languages Project



(CC) BY © Jeff Heath and the Dogon and Bangime
Languages Project

Family: Cleomaceae

[Arivela viscosa](#) .

- **tǔngàmò-nǒ:lù:\|nǒ:lè** . "herb sp." . Lit. "agama-..."



(CC) BY © Jeff Heath and the Dogon and Bangime
Languages Project



(CC) BY © Jeff Heath and the Dogon and Bangime
Languages Project



(CC) BY © Jeff Heath and the Dogon and Bangime
Languages Project

[Gynandropsis gynandra](#) L. . Characteristics: annual herb; palmately compound leaves; white flowers; fruit is an elongated capsule on a long stalk. Biotope: dry river course, mountains. ([Van Rooyen et al. 2001](#): 164; [Burke 2007](#): 80)

- **bèlá-gùjíl\|bèlá-gùjíl** . "herb sp." . Lit. "edible.leaf-..."



(CC) BY © Jeff Heath and the Dogon and Bangime Languages Project



(CC) BY © Forest & Kim Starr

Order: Caryophyllales

Family: Amaranthaceae

[Achyranthes aspera sicula](#) .

- **sàrà:jà-málé ngwè-mbò** . "herb sp."



(CC) BY © Jeff Heath and the Dogon and Bangime Languages Project



(CC) BY © Jeff Heath and the Dogon and Bangime Languages Project



(CC) BY © Jeff Heath and the Dogon and Bangime Languages Project

[Amaranthus dubius](#) Mart. ex Thell. .

- **nàwò:-bèlà:** . "herb sp.". Lit. "cows-edible.leaf".



(CC) BY © Jeff Heath and the Dogon and Bangime
Languages Project



(CC) BY © Jeff Heath and the Dogon and Bangime
Languages Project



(CC) BY © Jeff Heath and the Dogon and Bangime
Languages Project

Family: Caryophyllaceae

[*Polycarphae corymbosa*](#) (L.) Lam. .

- **jènà-pèndú\jènà-pèndú-mbó** . "herb sp.". Lit. "rainy.season-calabash.cover".



(CC) BY © Jeff Heath and the Dogon and Bangime
Languages Project



(CC) BY-NC © Bart Wursten



(CC) BY-NC © Bart Wursten

Family: Molluginaceae

[*Mollugo nudicaulis*](#) Lam. .

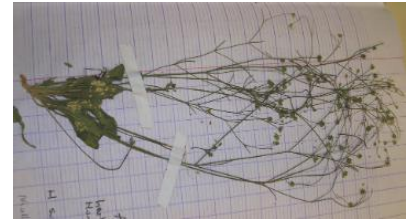
- **òndô: sàpùn** . "herb sp.". Lit. "children's soap".
- **[yàsìl-mbò]-sàpùn** . "herb sp.". Lit. "old.people-soap".



(CC) BY-NC © Bart Wursten



(CC) BY-NC © Bart Wursten



(CC) BY © Jeff Heath and the Dogon and Bangime

Languages Project

Family: Nyctaginaceae

[Boerhavia diffusa](#) L. .

- **sànakùyâ: kù:** \\sànakùyâ:-mbò kù: . "herb sp. (hogweed)". Lit. "squirrel's head".
- **sànakùyâ:-mbò dòlè** . "herb sp. (hogweed)". Lit. "squirrels' testicles".



(CC) BY © Jeff Heath and the Dogon and Bangime

Languages Project



(CC) BY © Jeff Heath and the Dogon and Bangime

Languages Project



(CC) BY © Jeff Heath and the Dogon and Bangime

Languages Project

[Boerhavia repens](#) L. . Characteristics: annual herb with thick roots and slender, hairy stems; egg- or lance-shaped leaves (3 cm); usually 2-7 white, pink or mauve flowers in clusters at the tips of shoots. Biotope: dry river course. ([Van Rooyen et al. 2001](#): 126)

- **bà:mà-ònjí** . "herb sp. (hogweed)".
- **púrɲèrè-ɲgò** \\púrɲèrè . "herb sp. (hogweed)".
- **yàsì-mbò sògòjé** . "herb sp. (hogweed)".



(CC) BY © Jeff Heath and the Dogon and Bangime Languages Project



(CC) BY © Jeff Heath and the Dogon and Bangime Languages Project



(CC) BY © Jeff Heath and the Dogon and Bangime Languages Project

Family: **Phytolaccaceae**

[Gisekia pharnaceoides](#) L. .

- bàrmà- [sémbèrè-ŋgo] \\bàrmà-sémbèrè . "prostrate herb sp."



(CC) BY © Jeff Heath and the Dogon and Bangime Languages Project



(CC) BY-NC © Bart Wursten



Public Domain by

Family: **Portulacaceae**

[Portulaca oleracea](#) L. .

- tàkóbùlù:\\tàkóbìlì: . "purslane (weed)".



(CC) BY © Jeff Heath and the Dogon and Bangime
Languages Project



(CC) BY © Forest & Kim Starr



(CC) BY © Jeff Heath and the Dogon and Bangime
Languages Project

Order: Cucurbitales

Family: Cucurbitaceae

[*Citrullus colocynthis*](#) (L.) Schrader .

- [tàŋkùndù-mbò]-kàndú \ [tàŋkùndù-mbò]-kàndé . "colocynth (inedible wild melon)".



(CC) BY © Jeff Heath and the Dogon and Bangime
Languages Project



(CC) BY © Jeff Heath and the Dogon and Bangime
Languages Project

[*Citrullus lanatus*](#) (Thunb.) Matsumura & Nakai . Characteristics: annual, creeping herb; the hairy leaves are divided into 3-5 lobes; male and female flowers grow on the same plant and are yellow; the fruit is round with a diameter of 15-20 cm and a yellow and green surface. Biotope: sandy soil, dune. ([Van der Walt and le Riche 1999](#): 110; [Van Rooyen et al. 2001](#): 148)

- kàndù nàwò:-[sùgé-ŋgó] \ kàndè nàwò:-sùgé . "watermelon (cultivated, eaten raw)".
- nè:-kàndú \ nàwò:-kàndé . "watermelon variety (cooked as a vegetable)".



(CC) BY © Jeff Heath and the Dogon and Bangime Languages Project



Public Domain by Christfried Naumann

Coccinia grandis (L.) Voigt .

- [kòy-mbò] -kàndú \\ [kòy-mbò] -kándé . "wild melon sp. (cucumber shape)".



(CC) BY © Jeff Heath and the Dogon and Bangime Languages Project



(CC) BY © Jeff Heath and the Dogon and Bangime Languages Project



(CC) BY © Jeff Heath and the Dogon and Bangime Languages Project

Ctenolepis cerasiformis (Stocks) Naudin .

- kàndù- [kólóndú-ηγό] \\ kàndè-kólóndé . "liana with small inedible fruit".



(CC) BY-NC © Bart Wursten



(CC) BY-NC © Bart Wursten



(CC) BY © Jeff Heath and the Dogon and Bangime Languages Project

[Lagenaria siceraria](#) (Molina) Standl. .

- kúyè-ηgò\\kúyè . "gourd (calabash) plant".



(CC) BY © Jeff Heath and the Dogon and Bangime Languages Project



(CC) BY © Forest & Kim Starr



(CC) BY © Forest & Kim Starr

[Momordica balsamina](#) L. . Characteristics: perennial climber; leaves are divided into 5-7 lobes, the margins toothed; the flowers are white to yellow with fused petals; the egg-shaped fruit is orange to red when ripe and covered with spines; the plant emits an unpleasant smell when bruised. Biotope: savanna, sandy soil. ([Van Rooyen et al. 2001](#): 152)

- [òy-mbò] -kàndú\\òy-mbò kàndé . "liana sp.".



(CC) BY © Jeff Heath and the Dogon and Bangime Languages Project



(CC) BY-SA © H. Zell



(CC) BY © Jeff Heath and the Dogon and Bangime Languages Project

Order: Ericales

Family: Ebenaceae

[Diospyros mespiliformis](#) Hochst. ex A.DC. .

- kùgú\\kùgé . "tree sp.".



(CC) BY © Jeff Heath and the Dogon and Bangime Languages Project



(CC) BY © Jeff Heath and the Dogon and Bangime Languages Project



(CC) BY © Jeff Heath and the Dogon and Bangime Languages Project

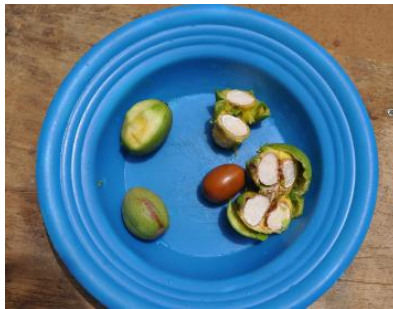
Family: Sapotaceae

[Vitellaria paradoxa paradoxa](#) .

- **mijú\mjé** . "karité (tree)".



(CC) BY © Jeff Heath and the Dogon and Bangime Languages Project



(CC) BY © Jeff Heath and the Dogon and Bangime Languages Project



(CC) BY © Jeff Heath and the Dogon and Bangime Languages Project

Order: Fabales

Family: Fabaceae

[Abrus precatorius](#) L. .

- **bèmbé-ŋgó\bèmbé** . "herb with hard red-and-black berries".



(CC) BY © Jeff Heath and the Dogon and Bangime Languages Project



(CC) BY © Jeff Heath and the Dogon and Bangime Languages Project

[Acacia senegal](#) (L.)Willd. .

- **sàmà-sàmá** . "gum tree (acacia)".



(CC) BY © Jeff Heath and the Dogon and Bangime Languages Project



(CC) BY © Jeff Heath and the Dogon and Bangime Languages Project

[Acacia seyal](#) Delile .

- **bĩnjù: pílè-ɲgò\\bĩnjè pílè** . "acacia sp.".



(CC) BY © Jeff Heath and the Dogon and Bangime Languages Project



(CC) BY © Jeff Heath and the Dogon and Bangime Languages Project

[Acacia tortilis](#) (Forssk.)Hayne .

- **bĩnjù: jémè-ɲgò\\bĩnjè jémè** . "acacia sp."



(CC) BY © Jeff Heath and the Dogon and Bangime Languages Project



(CC) BY © Jeff Heath and the Dogon and Bangime Languages Project

[Aeschynomene indica](#) L. .

- **bòrò-pó:lò:\\bòrò-pó:lè** . "tall herb sp.". Lit. "garden-waterskin".
- **kílàl\\kílè** . "tall herb sp.". From Ful .



(CC) BY © Jeff Heath and the Dogon and Bangime Languages Project



(CC) BY © Jeff Heath and the Dogon and Bangime Languages Project



(CC) BY © Jeff Heath and the Dogon and Bangime Languages Project

[Albizia chevalieri](#) Harms .

- **jàmnó:lù:\\jàmnó:lè** . "tree sp."



(CC) BY © Jeff Heath and the Dogon and Bangime Languages Project



(CC) BY © Jeff Heath and the Dogon and Bangime Languages Project



(CC) BY © Jeff Heath and the Dogon and Bangime Languages Project

[Alysicarpus ovalifolius](#) (Schum.)Leonard .

- **sɪŋkàrù\|sɪŋkàrĩ** . "herb sp."



(CC) BY © Jeff Heath and the Dogon and Bangime
Languages Project



(CC) BY © Jeff Heath and the Dogon and Bangime
Languages Project



(CC) BY © Jeff Heath and the Dogon and Bangime
Languages Project

[Bauhinia reticulata](#) DC. .

- **kǒlmbè-ŋgò\|kǒlmbè** . "tree sp."



(CC) BY © Jeff Heath and the Dogon and Bangime
Languages Project



(CC) BY © Jeff Heath and the Dogon and Bangime
Languages Project



(CC) BY © Jeff Heath and the Dogon and Bangime
Languages Project

[Bauhinia rufescens](#) Lam. .

- **sàtél-ŋgó\|sàtél** . "tree sp."



(CC) BY © Jeff Heath and the Dogon and Bangime
Languages Project



(CC) BY © Jeff Heath and the Dogon and Bangime
Languages Project



(CC) BY © Jeff Heath and the Dogon and Bangime
Languages Project

[Canavalia](#) .

- **ànàsàrà-númbí** . "liana sp." . Lit. "white.person-cow.pea".



(CC) BY © David Eickhoff



(CC) BY-NC-SA © Reinaldo aguilar



(CC) BY © Forest & Kim Starr

[Cassia sieberiana](#) DC. .

- **èwá** . "tree sp." .
- **[kùl-jèmbò] -tīmô:\\-tīmê:** . "tree sp." . Lit. "stomach-sickness-tree" .
- **nùmà-gĩnô:\\-gĩnê** . "tree sp." .



(CC) BY © Jeff Heath and the Dogon and Bangime
Languages Project



(CC) BY © Jeff Heath and the Dogon and Bangime
Languages Project



(CC) BY © Jeff Heath and the Dogon and Bangime
Languages Project

Chamaecrista nigricans (Vahl)Greene .

- wángàrà-bú:bù\ -bú:bï . "herb sp.". From Ful .



(CC) BY © Jeff Heath and the Dogon and Bangime
Languages Project



(CC) BY © Jeff Heath and the Dogon and Bangime
Languages Project



(CC) BY © Jeff Heath and the Dogon and Bangime
Languages Project

Crotalaria podocarpa DC. . Characteristics: annual herb with spreading stems; up to 3 cm tall; trifoliate leaves; pale yellow flowers; fruit is an inflated pod with stiff hair. Biotope: sandy soil. ([Van Rooyen et al. 2001](#): 130)

- [òy-mbò] -éié . "herb sp.". Lit. "mice-peanut".



(CC) BY © Jeff Heath and the Dogon and Bangime
Languages Project



(CC) BY © Jeff Heath and the Dogon and Bangime
Languages Project



(CC) BY © Jeff Heath and the Dogon and Bangime
Languages Project

Crotalaria retusa L. .

- **sàṅà-sàṅà jémè** . "herb sp."



(CC) BY © Jeff Heath and the Dogon and Bangime
Languages Project



(CC) BY © Jeff Heath and the Dogon and Bangime
Languages Project



(CC) BY © Jeff Heath and the Dogon and Bangime
Languages Project

Dalbergia melanoxylon Guill. & Perr. .

- **jàṅǎ:\jàṅě** . "tree sp."



(CC) BY © Jeff Heath and the Dogon and Bangime
Languages Project



(CC) BY © Jeff Heath and the Dogon and Bangime
Languages Project



(CC) BY © Jeff Heath and the Dogon and Bangime
Languages Project

[Daniellia oliveri](#) (Rolfe) Hutch. & Dalziel .

- **kàji-kèbèlè** . "tree sp."



(CC) BY © Jeff Heath and the Dogon and Bangime
Languages Project



(CC) BY © Jeff Heath and the Dogon and Bangime
Languages Project



(CC) BY © Jeff Heath and the Dogon and Bangime
Languages Project

[Detarium microcarpum](#) Guill. & Perr. .

- **póndù:\póndè** . "tree sp."



(CC) BY © Jeff Heath and the Dogon and Bangime
Languages Project



(CC) BY-NC-SA © Research Institute Senckenberg



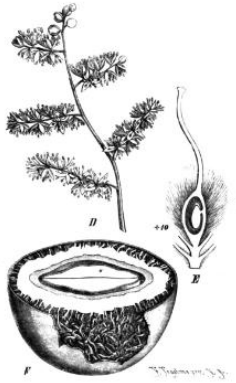
(CC) BY © Jeff Heath and the Dogon and Bangime
Languages Project

[Detarium senegalense](#) J.F.Gmel. .

- **póndù**:\póndè . "tree sp."



(CC) BY © Jeff Heath and the Dogon and Bangime
Languages Project



Public Domain by



CC-Zero ©

[Dichrostachys cinerea](#) (L.)Wight & Arn. . Characteristics: shrub or small tree; 1-3m tall, flowers in an elongated drooping spike, composed of two sections: a pink tuft of sterile flowers and below a section of fertile yellow flowers; the pods are curly and twisted;. Biotope: grassland, sandy soil. ([Van Rooyen et al. 2001](#): 44)

- **tílingí-ηgó**\tílingí . "shrub sp."



(CC) BY © Jeff Heath and the Dogon and Bangime
Languages Project



(CC) BY © Jeff Heath and the Dogon and Bangime
Languages Project



(CC) BY © Jeff Heath and the Dogon and Bangime
Languages Project

[Entada africana](#) Guill. & Perr. .

- **nò:lù- [gùndé-ηό] \\-gùndé** . "tree sp."



(CC) BY-NC-SA © Research Institute Senckenberg



(CC) BY © Jeff Heath and the Dogon and Bangime
Languages Project



(CC) BY © Jeff Heath and the Dogon and Bangime
Languages Project

[Erythrina senegalensis](#) DC. .

- **bèmbé-ηό \\bèmbé** . "tree sp."



(CC) BY © Jeff Heath and the Dogon and Bangime
Languages Project



(CC) BY-NC-SA © Research Institute Senckenberg



(CC) BY © Jeff Heath and the Dogon and Bangime
Languages Project

[Faidherbia albida](#) (Delile)A.Chev. .

- **kònjü**:\kònjě: . "balanzan tree".



(CC) BY-NC © Bart Wursten



(CC) BY-NC-SA © Research Institute Senckenberg



(CC) BY-NC © Bart Wursten

[Indigofera astragalina](#) DC. .

- **gàngàlà**-[gùndé-ɲgó] \ [gàngàlá-mbò] -gùndé . "herb sp.".



(CC) BY © Jeff Heath and the Dogon and Bangime
Languages Project



(CC) BY © Jeff Heath and the Dogon and Bangime
Languages Project



(CC) BY © Jeff Heath and the Dogon and Bangime
Languages Project

[Indigofera omissa](#) J.B.Gillett .

- **tàbàlàŋ-gàlá** \\ **tàbàlàŋ-gàlé** . "shrub sp."
- **tàbàlà-gàlá** \\ **tàbàlà-gàlé** . "shrub sp."
- **[tə̀bà̀là-gà̀là] - [gù̀ndé-ŋgó]** \\ **[tə̀bà̀là-gà̀là] -gù̀ndé** . "shrub sp."



(CC) BY © Jeff Heath and the Dogon and Bangime Languages Project



(CC) BY © Jeff Heath and the Dogon and Bangime Languages Project



(CC) BY © Jeff Heath and the Dogon and Bangime Languages Project

[Indigofera tinctoria tinctoria](#) .

- **gàlá-ŋgó** \\ **gàlá** . "herb sp."



(CC) BY © Jeff Heath and the Dogon and Bangime Languages Project



(CC) BY © Jeff Heath and the Dogon and Bangime Languages Project



(CC) BY © Jeff Heath and the Dogon and Bangime Languages Project

[Lonchocarpus laxiflorus](#) Guill. & Perr. .

- **bùndùkó** . "tree sp."



(CC) BY © Jeff Heath and the Dogon and Bangime
Languages Project



(CC) BY © Jeff Heath and the Dogon and Bangime
Languages Project



(CC) BY © Jeff Heath and the Dogon and Bangime
Languages Project

Mundulea sericea (Willd.)A.Chev. .

- **sàténjémbélé** . "shrub sp."
- **sàtènjèmbèlè ànà** . "shrub sp."



(CC) BY © Jeff Heath and the Dogon and Bangime
Languages Project



(CC) BY-NC © Bart Wursten



(CC) BY © Jeff Heath and the Dogon and Bangime
Languages Project

Neptunia oleracea Lour. .

- **púr-tímbá** . "floating vine sp.". From Ful "anus close-Imperative!", leaves close when touched .



(CC) BY-NC-SA © Research Institute Senckenberg



(CC) BY-NC © Karine Aigner



(CC) BY © Jeff Heath and the Dogon and Bangime
Languages Project

[Parkia biglobosa](#) (Jacq.)G.Don .

- **nǒ:lù:\nǒ:lè** . "locust-bean (nééré) tree".



(CC) BY-NC-SA © Research Institute Senckenberg



(CC) BY-NC-SA © Research Institute Senckenberg



(CC) BY-SA ©

[Prosopis africana](#) (Guill. & Perr.)Taub. .

- **à:-ηγó\àýⁿé** . "a wood for blacksmiths' charcoal".



(CC) BY © Jeff Heath and the Dogon and Bangime
Languages Project



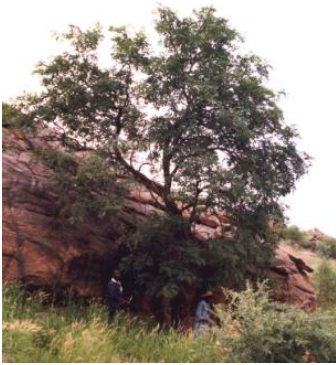
(CC) BY © Jeff Heath and the Dogon and Bangime
Languages Project

[Prosopis juliflora](#) (Sw.)DC. .

- **kèlà:\kèlê** . "tree sp. (planted)".

[Pterocarpus erinaceus](#) Poir. .

- **áyⁿάηgó** . "tree sp.".



(CC) BY © Jeff Heath and the Dogon and Bangime
Languages Project



(CC) BY © Jeff Heath and the Dogon and Bangime
Languages Project



(CC) BY © Jeff Heath and the Dogon and Bangime
Languages Project

Pterocarpus lucens Guill. & Perr. .

- **pélél-ηgo\pélél** . "tree sp."



(CC) BY-NC-SA © Research Institute Senckenberg



(CC) BY-NC-SA © Research Institute Senckenberg



(CC) BY © Jeff Heath and the Dogon and Bangime
Languages Project

Rhynchosia minima (L.)DC. .

- **kólè-táñ ~ kúlè-táñ** . "vine sp.". From Ful "thing-three", leaf trifoliate .



(CC) BY-NC © Katharina Schumann



(CC) BY-NC-SA © Rob Westerduijn



(CC) BY © Dick Culbert

[Senna italica italica](#) .

- òrɔ-gògɔ̀jù . "bush sp."
- gàngàlà- [gùndé-ɲgó] \\ [gàngàlá-mbò] -gùndé . "bush sp."



(CC) BY © Jeff Heath and the Dogon and Bangime Languages Project



(CC) BY © Jeff Heath and the Dogon and Bangime Languages Project



(CC) BY © Jeff Heath and the Dogon and Bangime Languages Project

[Senna obtusifolia](#) (L.)H.S.Irwin & Barneby .

- gàngàlá \\ gàngàlé . "herb sp."
- bèlà-gàngàlá-ɲgó \\ bèlà-gàngàlá . "herb sp."



(CC) BY © Jeff Heath and the Dogon and Bangime Languages Project



(CC) PUBLICDOMAIN © Michael Kesl



(CC) BY © Jeff Heath and the Dogon and Bangime Languages Project

[Senna occidentalis](#) (L.)Link .

- sánà-sánà-ɲgò \\ sánà-sánà . "bush sp."



(CC) BY-NC © Bart Wursten



(CC) BY © John Tann



Public Domain by

Tamarindus indica L. .

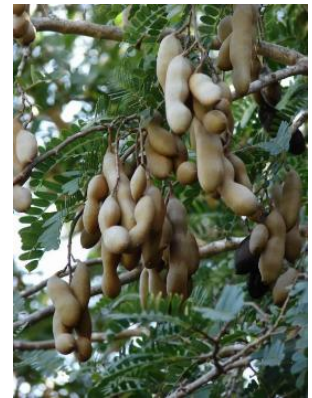
- òmbùlú:\\òmbélé . "tamarind".



(CC) BY © Jeff Heath and the Dogon and Bangime Languages Project



(CC) BY © Jeff Heath and the Dogon and Bangime Languages Project



(CC) BY © Forest & Kim Starr

Tephrosia mossiensis A.Chev. .

- gàngàlà géndè-ngò\\gàngàlà géndè: . "bush sp.". Lit. "Cassia sterile".



(CC) BY-NC-SA © Research Institute Senckenberg



(CC) BY-NC-SA © Research Institute Senckenberg



(CC) BY © Jeff Heath and the Dogon and Bangime Languages Project

[Tephrosia uniflora](#) Pers. .

- sàtèndèmbèl-ŋgó\\sàtèndèmbèlé . "herb sp."
- [tàbàlà-gàlà] - [gùndé-ŋgó] \\ [tàbàlà-gàlà] -gùndé . "herb sp." . Lit. "indigo-slave".



(CC) BY © Jeff Heath and the Dogon and Bangime

Languages Project



(CC) BY © Jeff Heath and the Dogon and Bangime

Languages Project

[Vachellia nilotica](#) .

- bǎ:là-ŋgò\\bǎ:lè: . "acacia sp."



(CC) BY © Jeff Heath and the Dogon and Bangime

Languages Project



(CC) BY © Jeff Heath and the Dogon and Bangime

Languages Project



(CC) BY © Jeff Heath and the Dogon and Bangime

Languages Project

[Vigna](#) .

- [ɛ̀lè-tèndèlè] - [gùndé-ŋgó] . "wild cow-pea". Lit. "groundnut-slave".



(CC) BY © Jeff Heath and the Dogon and Bangime Languages Project



(CC) BY © Jeff Heath and the Dogon and Bangime Languages Project



(CC) BY © Jeff Heath and the Dogon and Bangime Languages Project

[Vigna subterranea](#) (L.)Verdc. .

- èlè- [téndél-ηgò] \\èlè-téndélè . "ground nut".



(CC) BY-SA © Kembangraps



(CC) MARK © Kkibumba



(CC) BY-SA ©

[Zornia glochidiata](#) DC. .

- déηgè:r-ηgò \\déηgè:rè . "herb sp.". From Ful .



(CC) BY-NC © Bart Wursten



(CC) BY-NC © Bart Wursten



(CC) BY-NC © Bart Wursten

Order: Gentianales

Family: Apocynaceae

[Calotropis procera](#) .

- **nàmbà-** [dǎ:-gò] \\ **nàmbà-dǎyè** . "shrub sp."



(CC) BY © Jeff Heath and the Dogon and Bangime Languages Project



(CC) BY © Jeff Heath and the Dogon and Bangime Languages Project

[Caralluma acutangula](#) Decne. .

- **gàmbá-ɲgó** \\ **gàmbá** . "succulent plant sp."



(CC) BY © Jeff Heath and the Dogon and Bangime Languages Project



(CC) BY © Jeff Heath and the Dogon and Bangime Languages Project



(CC) BY © Jeff Heath and the Dogon and Bangime Languages Project

[Saba senegalensis](#) (A. DC.) Pichon .

- **kǎmbù:** \\ **kǎmbè** . "zaban (woody liana)"



(CC) BY-NC-SA © Research Institute Senckenberg



(CC) BY © Jeff Heath and the Dogon and Bangime Languages Project



(CC) BY-NC-SA © Research Institute Senckenberg

Family: Rubiaceae

[Feretia apodanthera](#) Delile .

- jùnjúm pàrà:\jùnjúm pàrê: . "shrub sp.". Lit. "stirring.stick crushed.millet".



(CC) BY © Jeff Heath and the Dogon and Bangime
Languages Project



(CC) BY © Jeff Heath and the Dogon and Bangime
Languages Project

[Gardenia ternifolia](#) Schumach. & Thonn. .

- dùgà-dùgù-mbò pòndè . "shrub sp.". Lit. "sorcerers-Detarium".



(CC) BY © Jeff Heath and the Dogon and Bangime
Languages Project



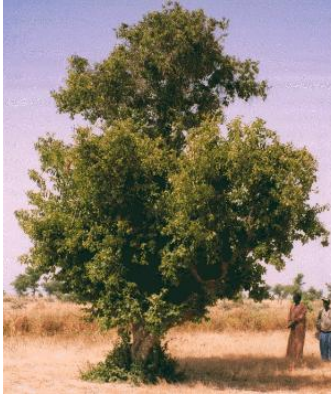
(CC) BY © Jeff Heath and the Dogon and Bangime
Languages Project



(CC) BY © Jeff Heath and the Dogon and Bangime
Languages Project

[Mitragyna inermis](#) (Willd.) Kuntze .

- kó:lò:\kó:lè: . "tree sp.". From Ful .



(CC) BY © Jeff Heath and the Dogon and Bangime
Languages Project



(CC) BY © Jeff Heath and the Dogon and Bangime
Languages Project



(CC) BY © Jeff Heath and the Dogon and Bangime
Languages Project

Sarcocephalus latifolius Sm. .

- èlélù:\èlélí . "tree sp."
- [kòy-mbò] -dúmbú\ [kòy-mbò] -dúmbí . "tree sp.". Lit. "monkeys-vagina".



(CC) BY-NC-SA © Research Institute Senckenberg



(CC) BY-NC-SA © Research Institute Senckenberg



(CC) BY © Jeff Heath and the Dogon and Bangime
Languages Project

Spermacoce .

- tákábáí . "herb sp."



(CC) BY © Forest & Kim Starr



(CC) BY-NC-SA © Jason Sharp

Order: Lamiales

Family: Acanthaceae

[*Blepharis maderaspatensis*](#) (L.) Heyne ex Roth .

- **tágábàl** . "herb sp."



(CC) BY © Jeff Heath and the Dogon and Bangime
Languages Project

[*Hygrophila auriculata*](#) (Hamilt.) M.R. Almeida & S.M. Almeida .

- **bòrò-kémbó** . "herb sp."



(CC) BY © Jeff Heath and the Dogon and Bangime
Languages Project



(CC) BY © Jeff Heath and the Dogon and Bangime
Languages Project



(CC) BY © Jeff Heath and the Dogon and Bangime
Languages Project

[*Nelsonia canescens*](#) (Lam.) Spreng. .

- **bòrò-òmbélé** . "herb sp."



(CC) BY-NC © Helen Pickering



(CC) BY-NC-SA © Research Institute Senckenberg



(CC) BY © Jeff Heath and the Dogon and Bangime Languages Project

Family: Lamiaceae

[Leucas martinicensis](#) (Jacq.) R.Br. .

- **bòrò-pètíńá\\bòrò-pètíńé ~ bòrò-pèđíńá\\bòrò-pèđíńé** . "herb sp.". Lit. "garden-Xylophia".
- **èndè: òùrùbà:nà-ńgò\\òndò: òùrùbà:nà** . "herb sp.". Lit. "child's amber".



(CC) BY © Jeff Heath and the Dogon and Bangime Languages Project



(CC) BY-NC © Bart Wursten



(CC) BY © Jeff Heath and the Dogon and Bangime Languages Project

[Ocimum americanum](#) L. . Characteristics: herb; up to 50 cm tall; elongated leaves in clusters; pink to white flowers; .
([Burke 2007](#): 86)

- **gĩrè-ńĩgĩlè ánà**: . "bush sp.".



(CC) BY © Jeff Heath and the Dogon and Bangime Languages Project



(CC) BY © Jeff Heath and the Dogon and Bangime Languages Project



(CC) BY © Jeff Heath and the Dogon and Bangime Languages Project

Family: Orobanchaceae

[*Striga hermonthica*](#) (Del.) Benth. .

- **yógé dùgò**: \\yóge dùgè: . "herb sp.". Lit. "millet's sorceror".



(CC) BY-NC-SA © Research Institute Senckenberg



(CC) BY-NC-SA © Research Institute Senckenberg



(CC) BY-NC-SA © Delile, A.R., 1813. Description de l'Égypte

Family: Pedaliaceae

[*Ceratotheca sesamoides*](#) Endl. .

- **[bǎ:-gò] -dàgè** . "herb sp.". Lit. "stick-medicine".



(CC) BY © Jeff Heath and the Dogon and Bangime Languages Project



(CC) BY © Jeff Heath and the Dogon and Bangime Languages Project



(CC) BY © Jeff Heath and the Dogon and Bangime Languages Project

Sesamum alatum P. Thonn. .

- **kéré pà:l-ηgò\kéré pà:lè** . "wild sesame (herb)". Lit. "outback's sesame".



(CC) BY-NC © Bart Wursten



(CC) BY-NC © Bart Wursten



(CC) BY-NC © Bart Wursten

Family: Plantaginaceae

Scoparia dulcis L. .

- **tímtím-ηgó\ tímtím** . "herb sp.".



(CC) BY © India Biodiversity Portal



(CC) BY-NC-SA © Research Institute Senckenberg



(CC) BY-SA ©

Order: Magnoliales

Family: Annonaceae

[Annona senegalensis](#) Pers. .

- **tìyà-góndé** . "tree sp."



(CC) BY-SA © Ton Rulkens



(CC) BY © Jeff Heath and the Dogon and Bangime
Languages Project

[Hexalobus monopetalus](#) (A. Rich.) Engl. & Diels .

- **gùjumbélé** . "tree sp."



(CC) BY © Jeff Heath and the Dogon and Bangime
Languages Project



(CC) BY © Jeff Heath and the Dogon and Bangime
Languages Project



(CC) BY © Jeff Heath and the Dogon and Bangime
Languages Project

Order: Malpighiales

Family: Euphorbiaceae

[Euphorbia austro-occidentalis](#) Thell. .

- **sò:mè [émè dòmbà]** . "prostrate herb sp."
- **bèndù-mbò émè** . "prostrate herb sp."



(CC) BY © Jeff Heath and the Dogon and Bangime Languages Project



(CC) BY © Jeff Heath and the Dogon and Bangime Languages Project



(CC) BY © India Biodiversity Portal

[Jatropha curcas](#) L. .

- **kīló: tīmò:** . "tree sp. (jatropha)". Lit. "animal.pen's tree".
- **ĩbĩ-nĩnā tīmò:** . "tree sp. (jatropha)". Lit. "mouth-cut tree".



(CC) BY-NC © inaturalist



(CC) BY-NC © inaturalist



(CC) BY-NC-SA © Research Institute Senckenberg

[Ricinus communis](#) L. .

- **[bòmò jàlá-mbó] dàgè** . "shrub sp.". Lit. "snakes' medicine".
- **[bòmò jàlá-mbó] tīmò:** . "shrub sp.". Lit. "snakes' tree".
- **dùrù-mòmé-ɲgó\\dùrù-mòmé** . "shrub sp.". Lit. "sorcery-fetish".



(CC) BY-SA © Andreas Friih (Andel)



(CC) BY-SA © H. Zell

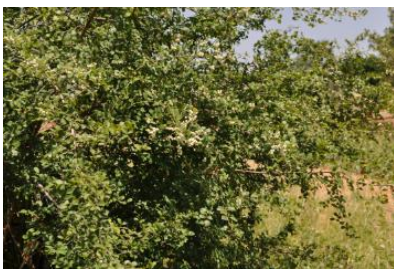


(CC) BY © Jeff Heath and the Dogon and Bangime
Languages Project

Family: Phyllanthaceae

[Flueggea virosa virosa](#) .

- **sá:kĩ** . "tree sp. (Chinese waterberry)".



(CC) BY © Jeff Heath and the Dogon and Bangime
Languages Project



(CC) BY © Jeff Heath and the Dogon and Bangime
Languages Project



(CC) BY © Jeff Heath and the Dogon and Bangime
Languages Project

[Phyllanthus reticulatus reticulatus](#) .

- **dú:rù\ dú:rĩ** . "shrub sp."
- **sá:gĩ-ηgò\ sá:gĩ** . "shrub sp."



(CC) BY © Jeff Heath and the Dogon and Bangime
Languages Project



(CC) BY-NC © Bart Wursten



(CC) BY-NC © Bart Wursten

Order: Malvales

Family: Malvaceae

[Adansonia digitata](#) L. .

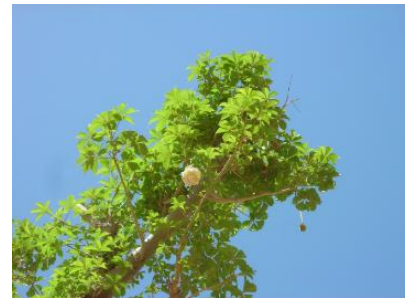
- ðrɔ̃:\ðrɛ̃ . "baobab tree".



Public Domain by unknown



(CC) BY © Jeff Heath and the Dogon and Bangime
Languages Project



(CC) BY © Jeff Heath and the Dogon and Bangime
Languages Project

[Ceiba pentandra](#) (L.) Gaertn. .

- dùr-ŋgó\dùré . "tree sp.".



(CC) BY © Jeff Heath and the Dogon and Bangime
Languages Project



(CC) BY-NC-SA © Reinaldo Aguilar

Cola laurifolia Mast. .

- **ḃ̀:ḃ̀:ḃ̀:ḃ̀:ḃ̀:ḃ̀:** . "tree sp."



(CC) BY © Jeff Heath and the Dogon and Bangime
Languages Project



(CC) BY © Jeff Heath and the Dogon and Bangime
Languages Project



(CC) BY © Jeff Heath and the Dogon and Bangime
Languages Project

Corchorus Patrity, 1965 .

- **ḃ̀ḃ̀-ḃ̀ḃ̀ḃ̀ḃ̀** . "herb sp." . Lit. "baobab-..."



(CC) BY-NC-SA © Research Institute Senckenberg



(CC) BY-NC © Bart Wursten

Grewia villosa Willd. .

- **bèmbèrè bònjú\ \bèmbèrè bònjé** . "shrub sp."



(CC) BY-NC © Bart Wursten



(CC) BY © Jeff Heath and the Dogon and Bangime
Languages Project



(CC) BY-NC © Bart Wursten

Hibiscus cannabinus L. .

- **[kòy-mbò] -dònè** . "erect herb sp.". Lit. "monkeys-roselle".



(CC) BY © Jeff Heath and the Dogon and Bangime
Languages Project



(CC) BY © Jeff Heath and the Dogon and Bangime
Languages Project



(CC) BY © Jeff Heath and the Dogon and Bangime
Languages Project

Hibiscus longisepalus Hochr. .

- **yá-yágára-ηgó\ \yá-yágára** . "bush sp."



(CC) BY © Jeff Heath and the Dogon and Bangime Languages Project



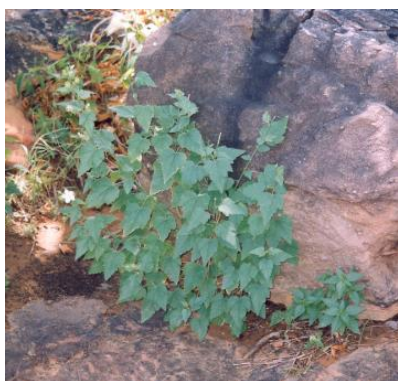
(CC) BY © Jeff Heath and the Dogon and Bangime Languages Project



(CC) BY © Jeff Heath and the Dogon and Bangime Languages Project

Hibiscus ovalifolius (Forssk.) Vahl .

- [nĩ:-mbò] -nàmâ: . "bush sp."



(CC) BY © Jeff Heath and the Dogon and Bangime Languages Project



(CC) BY © Jeff Heath and the Dogon and Bangime Languages Project

Sida abutifolia Mill. .

- ùnùl sáǵálá . "bush sp."



(CC) BY-NC © inaturalist



(CC) BY-NC © Picasa



(CC) BY © Jeff Heath and the Dogon and Bangime Languages Project

[Waltheria indica](#) L. .

- àṅkwâ:\àṅkwê: . "bush sp."



(CC) BY © Jeff Heath and the Dogon and Bangime Languages Project



(CC) BY © Jeff Heath and the Dogon and Bangime Languages Project



(CC) BY © Jeff Heath and the Dogon and Bangime Languages Project

Order: Myrtales

Family: Lythraceae

[Lawsonia inermis](#) L. .

- púddi-ṅgò\púddi . "henna bush".



(CC) BY © Jeff Heath and the Dogon and Bangime Languages Project

Order: Nymphaeales

Family: Nymphaeaceae

Nymphaea .

- àñjikòlé-ηγó\\àñji-kòlé . "water lily (all spp.)". Lit. "star".



(CC) BY-NC-SA © Mary Keim



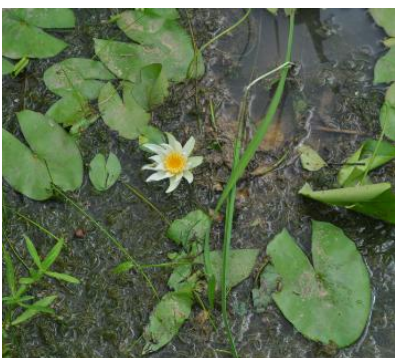
(CC) BY-NC-SA © Research Institute Senckenberg



(CC) BY-NC © Bart Wursten

Nymphaea micrantha Guill. & Perr. .

- àjikòlé yàwó: . "water lily sp. (small tuft on leaf, 4 sepals, first-year of growth, small but tasty rhizome)".
- àjikòlé áná: . "water lily sp. (tuft on leaf above petiole, leaf margin entire, leaf oval, 4 sepals, large rhizome)".



(CC) BY © Jeff Heath and the Dogon and Bangime Languages Project



(CC) BY © Jeff Heath and the Dogon and Bangime Languages Project



(CC) BY © Jeff Heath and the Dogon and Bangime Languages Project

Order: Rosales

Family: Cannabaceae

[Trema orientalis](#) (L.) Bl. .

- **néné** . "shrub sp."



(CC) BY ©



(CC) BY-NC-SA © satish nikam



(CC) BY-SA ©

Family: Moraceae

[Ficus sarmentosa luducca](#) .

- **b̀r̄ṣ̄: k̀umb̀ù:\b̀r̄ṣ̄: k̀umb̀è** . "fig tree sp.". Lit. "garden's fig".
- **k̀umb̀è-g̀undé** . "fig tree sp.". Lit. "fig-slave".



(CC) BY © Jeff Heath and the Dogon and Bangime
Languages Project



(CC) BY © Jeff Heath and the Dogon and Bangime
Languages Project



(CC) BY © Jeff Heath and the Dogon and Bangime
Languages Project

[Ficus sycomorus](#) .

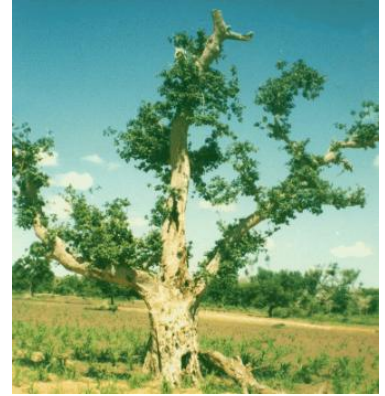
- **g̀am-g̀ó\g̀amé** . "fig tree sp."



(CC) BY © Jeff Heath and the Dogon and Bangime Languages Project



(CC) BY © Jeff Heath and the Dogon and Bangime Languages Project



(CC) BY © Jeff Heath and the Dogon and Bangime Languages Project

Family: Rhamnaceae

[Ziziphus mauritiana](#) Lam. .

- **sěndè-ɲgò** \sěndɛ̃ . "jujube (shrub)".



(CC) BY-SA ©



(CC) BY © Jeff Heath and the Dogon and Bangime Languages Project



(CC) BY-NC © Bart Wursten

Order: Santalales

Family: Ximeniaceae

[Ximenia americana](#) L. .

- **pùlàndè ɛ̃níyè** . "thorny shrub sp.". Lit. "Fulbe-Spondias".



(CC) BY-NC-SA © Research Institute Senckenberg



(CC) BY © Jeff Heath and the Dogon and Bangime Languages Project



(CC) BY © Jeff Heath and the Dogon and Bangime Languages Project

Order: Sapindales

Family: Anacardiaceae

[Anacardium occidentale](#) L. .

- **sôm-gò\\sôm** . "cashew tree (planted)". From Bam .
- **ũmò: [[ðmò bĩndò-mbò]-nàlé]** . "cashew tree (planted)". Lit. "tree bearing inverted fruits".



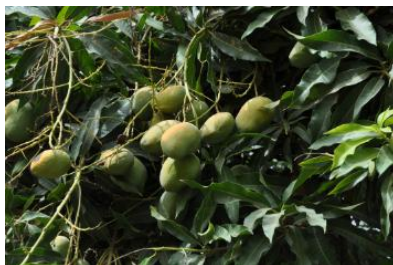
(CC) BY © Jeff Heath and the Dogon and Bangime Languages Project

[Mangifera indica](#) L. .

- **màṅgórò\\màṅgèrè** . "mango".



(CC) BY-NC-SA © Research Institute Senckenberg



(CC) BY © Jeff Heath and the Dogon and Bangime Languages Project



(CC) BY-SA ©

[Sclerocarya birrea](#) .

- **бі:-ηγό\бі:** . "tree sp."



(CC) BY © Jeff Heath and the Dogon and Bangime Languages Project



(CC) BY-NC-SA © Research Institute Senckenberg



(CC) BY © Jeff Heath and the Dogon and Bangime Languages Project

[Spondias mombin](#) Jacq. .

- **èníyè-ηγò\èníyè** . "tree sp."



(CC) BY © Jeff Heath and the Dogon and Bangime Languages Project



(CC) BY-NC-SA © Research Institute Senckenberg



(CC) BY © Jeff Heath and the Dogon and Bangime Languages Project

Family: Meliaceae

[Azadirachta indica](#) A. Juss. .

- **ṭimò: gǎl-ηγò\ṭimè: gǎlí-yè** . "neem tree".



(CC) BY © Jeff Heath and the Dogon and Bangime
Languages Project



(CC) BY © Jeff Heath and the Dogon and Bangime
Languages Project

[*Khaya senegalensis*](#) (Desv.) A. Juss. .

- **pèlè-ηgó\pèlé** . "tree sp."



(CC) BY © Jeff Heath and the Dogon and Bangime
Languages Project



(CC) BY-NC-SA © Research Institute Senckenberg



(CC) BY © Jeff Heath and the Dogon and Bangime
Languages Project

Family: Rutaceae

[*Citrus limon*](#) (L.) Burm. f. .

- **lè:múrù\lè:mírì** . "lemon".
- **lè:mbúrù\lè:mbírì** . "lemon".



(CC) PUBLICDOMAIN © Pavel Buršík



(CC) BY-SA ©



(CC) BY-SA ©

[Citrus sinensis](#) L. .

- lè:mùrù-bá:\\lè:mbĩrĩ-bá: . "orange".



(CC) BY-SA © Mifa



(CC) BY © Jeff Heath and the Dogon and Bangime Languages Project



(CC) BY © Jeff Heath and the Dogon and Bangime Languages Project

[Vepris heterophylla](#) (Engl.) Letouzey .

- sùŋkùmbùrù\\sùŋkùmbéré . "kinkeliba shrub".



(CC) BY-NC © Philippe Birnbaum



(CC) BY-NC © Philippe Birnbaum



(CC) BY-NC © Philippe Birnbaum

Family: Sapindaceae

[Cardiospermum halicacabum](#) L. .

- tòndè-ŋgò mènjú:\\tòndè mènjí: . "herb sp.". Lit. "vine small".



(CC) BY-NC-SA © Valter Jacinto



(CC) BY © Jeff Heath and the Dogon and Bangime Languages Project

[Lepisanthes senegalensis](#) (Poir.) Leenhouts .

- **dèndé-ηγó\\dèndé** . "tree sp. "



(CC) BY © Jeff Heath and the Dogon and Bangime Languages Project



(CC) BY © Jeff Heath and the Dogon and Bangime Languages Project



(CC) BY © Jeff Heath and the Dogon and Bangime Languages Project

Order: Solanales

Family: Convolvulaceae

[Ipomoea aquatica](#) Forsskal .

- **bómbór-ηγó\\bómbóré** . "trailing vine sp."
- **bòmbòrè mènjú:\\bòmbòrè mènjí** : "trailing vine sp.". Lit. "... small".
- **[ηγέ kùl] tèndè-ηγò\\tèndè** . "trailing vine sp.". Lit. "[water in] vine".



(CC) BY © Jeff Heath and the Dogon and Bangime
Languages Project



(CC) BY © Jeff Heath and the Dogon and Bangime
Languages Project



(CC) BY © Jeff Heath and the Dogon and Bangime
Languages Project

[Ipomoea asarifolia](#) (Desr.) Roem. & Schult. .

- **bómbór-ηgó** \ **bómbóré** . "trailing vine sp."



(CC) BY © Jeff Heath and the Dogon and Bangime
Languages Project



(CC) BY-NC-SA © Research Institute Senckenberg



(CC) BY © Jeff Heath and the Dogon and Bangime
Languages Project

[Ipomoea pes-tigridis](#) L. .

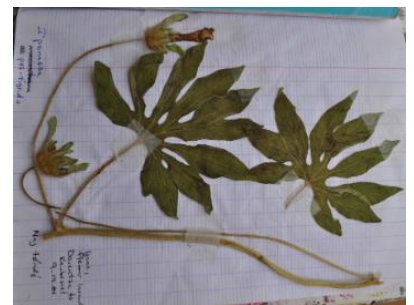
- **tóndé-ηgó** \ **tóndé** . "trailing vine sp."



(CC) BY-NC © Bart Wursten



Public Domain by



(CC) BY © Jeff Heath and the Dogon and Bangime
Languages Project

Family: Solanaceae

[Physalis angulata](#) L. .

- **tù:ltà:là- [sǎ:mè-ηgò]** . "herb sp.". Lit. "nonsense-grass".



(CC) BY © Jeff Heath and the Dogon and Bangime Languages Project



Public Domain by flaksbaum



(CC) BY-SA © W.A. Djatmiko

[*Solanum incanum*](#) L. . Characteristics: shrub, 80cm tall, many branches that are covered with hairs and spines, large lobed leaves, purplish-white flowers, fruit turns from green to yellow when ripe. Biotope: dry river course. ([Van Rooyen et al. 2001](#): 76)

- [ɪnè ɡìrè] pújè . "thorny bush sp.". Lit. "goat's eye burst".



(CC) BY © Jeff Heath and the Dogon and Bangime Languages Project



(CC) BY-NC © Bart Wursten



(CC) BY © Jeff Heath and the Dogon and Bangime Languages Project

Family: Sphenocleaceae

[*Sphenoclea zeylanica*](#) Gaertn. .

- sò:mè- [pètɪŋé-ŋgó] \sò:mè-pètɪŋé . "herb sp.".



(CC) BY © Jeff Heath and the Dogon and Bangime Languages Project



(CC) BY-SA ©



Public Domain by

Order: Vitales

Family: Vitaceae

[Cissus quadrangularis](#) L. .

- àlmónè-ηgò\àlmónè . "liana sp."



(CC) BY-SA © Marco Schmidt



(CC) BY © Jeff Heath and the Dogon and Bangime Languages Project



(CC) BY © Jeff Heath and the Dogon and Bangime Languages Project

Order: Zygophyllales

Family: Zygophyllaceae

[Balanites aegyptiacus](#) .

- túηgú\túηgé . "wild date tree".



(CC) BY © Jeff Heath and the Dogon and Bangime
Languages Project



(CC) BY © Jeff Heath and the Dogon and Bangime
Languages Project



(CC) BY © Jeff Heath and the Dogon and Bangime
Languages Project

[Tribulus terrestris](#) L. . Characteristics: creeping growth, yellow flowers, flower 1 cm in diameter, soft-haired leaves, woody, sharp, spiny fruits that can puncture animals' hoofs, bare feet and bicycle tyres. ([Van der Walt and le Riche 1999](#): 109)

- *nàngá* \ *nàngà-mbó* . "herb sp."



(CC) BY © Jeff Heath and the Dogon and Bangime
Languages Project



(CC) BY-SA © Stan Shebs



(CC) BY-SA © Stan Shebs

Class: Polypodiopsida

Order: Salviniales

Family: Marsileaceae

[Marsilea minuta](#) .

- *ĩngé-kùl bèmberè* . "fern sp.". Lit. "water-interior's vine".



(CC) PUBLICDOMAIN © Michael Kesl



(CC) BY-NC-SA © Research Institute Senckenberg



(CC) BY-NC © Bart Wursten

Class: other

Order: Lamiales

Family: Acanthaceae

[Monechma ndellense](#) Lindau .

- **mèlènjà:** . "herb sp."



(CC) BY © Jeff Heath and the Dogon and Bangime Languages Project



(CC) BY-NC-SA © Research Institute Senckenberg



(CC) BY-NC-SA © Research Institute Senckenberg

Order: Ranunculales

Family: Menispermaceae

[Tinospora bakis](#) (A.Rich.) Miers .

- **kókóbú-ηgó\\kókóbí:** . "woody liana sp."



(CC) BY © Jeff Heath and the Dogon and Bangime Languages Project



(CC) BY © Jeff Heath and the Dogon and Bangime Languages Project



(CC) BY © Jeff Heath and the Dogon and Bangime Languages Project

Order: Sapindales

Family: Anacardiaceae

[Lannea humilis](#) (Oliv.) Engl. .

- kùrà- [sólmbé-ŋgó] \\kùrè-sólmbé . "tree sp."



(CC) BY © Jeff Heath and the Dogon and Bangime Languages Project



(CC) BY © Jeff Heath and the Dogon and Bangime Languages Project



(CC) BY © Jeff Heath and the Dogon and Bangime Languages Project

Kingdom: Viridiplantae

Phylum: Streptophyta

Class: Magnoliopsida

Order: Brassicales

Family: Capparaceae

[Boscia angustifolia](#) A. Rich. .

- **nápĩlò:\\nápĩlè:** . "tree sp."



(CC) BY © Jeff Heath and the Dogon and Bangime
Languages Project



(CC) BY © Jeff Heath and the Dogon and Bangime
Languages Project



(CC) BY © Jeff Heath and the Dogon and Bangime
Languages Project

[Maerua angolensis](#) .

- **bèlà-yó:-ngó\\bèlà-yó:** . "tree sp.". Lit. "edible.leaf-...".
- **púllò sùkùndù\\sùkùndĩ** . "tree sp.". Lit. "Fulbe's hair".



(CC) BY-NC © Bart Wursten



(CC) BY-NC © Bart Wursten



(CC) BY © Jeff Heath and the Dogon and Bangime
Languages Project

Family: Salvadoraceae

[Salvadora persica](#) L. .

- **sùṅàsùṅǎ:\\sùṅàsùṅě:** . "shrub sp."
- **hóròy-ṅò\\hóròy** . "shrub sp."



(CC) BY © Jeff Heath and the Dogon and Bangime Languages Project



(CC) BY © Jeff Heath and the Dogon and Bangime Languages Project



(CC) BY-NC © Bart Wursten

Order: Caryophyllales

Family: Aizoaceae

[Zaleya pentandra](#) (L.) C. Jeffrey .

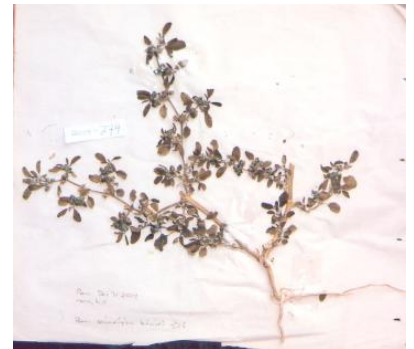
- **tàkóbīlī** . "herb sp."



(CC) BY-NC © Bart Wursten



(CC) BY-NC © Bart Wursten



(CC) BY © Jeff Heath and the Dogon and Bangime Languages Project

Family: Amaranthaceae

[Pandiaka angustifolia](#) (Vahl) Hepper .

- **[ànà-kùmī:] -jùnjú** \\ **[:ànà-kùm-bò] -jùnjī** . "herb sp." . Lit. "bachelor-stirring.stick".



(CC) BY © Jeff Heath and the Dogon and Bangime
Languages Project



(CC) BY © Jeff Heath and the Dogon and Bangime
Languages Project



(CC) BY © Jeff Heath and the Dogon and Bangime
Languages Project

Pupalia lappacea (L.) Juss. . Characteristics: erect or sprawling herb; up to 90 cm tall; stems with multiple opposite branches that grow from nodes; branches are 4-angled; the mature inflorescence is up to 50 cm long and has green flowers; fruit is a capsule with shiny brown seeds. Biotope: sandy soil. ([Van Rooyen et al. 2001](#): 156)

- **nògù-mà-nógù** \ **nògĩ-mà-nógĩ** . "herb sp."



(CC) BY-NC © Bart Wursten



(CC) BY-NC © Bart Wursten



Public Domain by Christfried Naumann

Order: Celastrales

Family: Celastraceae

Gymnosporia senegalensis .

- **dògó sóbá** \ **dògó sóbé** . "tree sp. with long thorns". Lit. "misery jab-Imperative!"



(CC) BY © Jeff Heath and the Dogon and Bangime
Languages Project



(CC) BY-NC-SA © Research Institute Senckenberg



(CC) BY © Jeff Heath and the Dogon and Bangime
Languages Project

[Loeseneriella africana](#) (Willd.) R. Wilczek .

- **kě:ⁿ-ηgò\kê:ⁿ** . "woody liana sp."



(CC) BY © Jeff Heath and the Dogon and Bangime
Languages Project



(CC) BY-NC-SA © Research Institute Senckenberg



(CC) BY © Jeff Heath and the Dogon and Bangime
Languages Project

Order: Cucurbitales

Family: Cucurbitaceae

[Cucumis prophetarum prophetarum](#) .

- **kàndè gəlìyè** . "inedible wild melon sp."
- **kàndù-[kólóndú-ηgó]\kàndè-kólóndé** . "inedible wild melon sp."



(CC) BY © Jeff Heath and the Dogon and Bangime Languages Project



(CC) BY © Jeff Heath and the Dogon and Bangime Languages Project



(CC) BY © Jeff Heath and the Dogon and Bangime Languages Project

[Cucumis pustulatus](#) Hook. f. .

- ènjè-kélbé . "horned melon".
- [kòrù-mbò] - [něm-gó] . "horned melon".



(CC) BY © Jeff Heath and the Dogon and Bangime Languages Project



(CC) BY © Jeff Heath and the Dogon and Bangime Languages Project



(CC) BY © Jeff Heath and the Dogon and Bangime Languages Project

Order: Fabales

Family: Fabaceae

[Vachellia amythetophylla](#) .

- òlò jémè-ηgò\ \ òlè gémè . "thorny tree sp.".



(CC) BY © Jeff Heath and the Dogon and Bangime Languages Project



(CC) BY © Jeff Heath and the Dogon and Bangime Languages Project



(CC) BY © Jeff Heath and the Dogon and Bangime Languages Project

Order: Gentianales

Family: Apocynaceae

[Caralluma adscendens](#) (Roxb.) Haw. .

- ḡwè:-ĩnǎ:\\ [ḡwè:-mbò] -ĩǎ: . "succulent plant sp.". Lit. "dog-tooth".



(CC) BY © Jeff Heath and the Dogon and Bangime Languages Project



(CC) BY © Jeff Heath and the Dogon and Bangime Languages Project



(CC) BY © Jeff Heath and the Dogon and Bangime Languages Project

[Cynanchum hastifolium](#) .

- [mèlègè-mbò] - [dùr-ḡgó] \\-dùré . "liana sp.". Lit. "spirits-Ceiba".



(CC) BY © Jeff Heath and the Dogon and Bangime Languages Project



(CC) BY © Jeff Heath and the Dogon and Bangime Languages Project

[Cynanchum viminale](#) .

- **m̀̀:-[p̀̀nd̀̀-ŋ̀̀g̀̀]** \\ **m̀̀:-p̀̀nd̀̀** . "vine sp.". Lit. "neck-prop".



(CC) BY-NC-SA © Research Institute Senckenberg



(CC) BY-NC © Bart Wursten



(CC) BY-SA © Ton Rulkens

[Glossonema boveanum](#) .

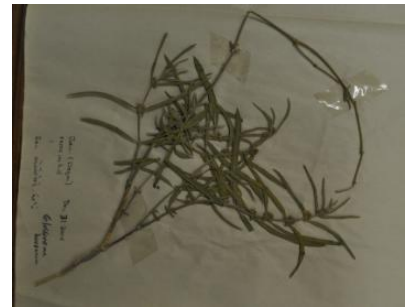
- **b̀̀arm̀̀a s̀̀emb̀̀er̀̀e** . "herb sp.".



(CC) BY © Jeff Heath and the Dogon and Bangime
Languages Project



(CC) BY © Jeff Heath and the Dogon and Bangime
Languages Project



(CC) BY © Jeff Heath and the Dogon and Bangime
Languages Project

[Leptadenia hastata](#) .

- **̀̀anj̀̀i-k̀̀om̀̀il̀̀a-ŋ̀̀g̀̀** \\ **̀̀anj̀̀i-k̀̀om̀̀il̀̀e** . "vine sp.".



(CC) BY-NC-SA © Research Institute Senckenberg



(CC) BY © Jeff Heath and the Dogon and Bangime Languages Project



(CC) BY © Jeff Heath and the Dogon and Bangime Languages Project

Leptadenia pyrotechnica (Forssk.) Decne. .

- ànjì-kòmīlā ánà . "bush sp."



(CC) BY © Jeff Heath and the Dogon and Bangime Languages Project



(CC) BY-NC-SA © Bibliotheca Alexandrina - EOL Ar



(CC) BY-SA ©

Pergularia tomentosa L. .

- kóláliyè-ηgò\\kóláliyè . "bush sp."
- kàlé-ηgó\\kàlé . "bush sp."



(CC) BY © Jeff Heath and the Dogon and Bangime Languages Project



(CC) BY © Jeff Heath and the Dogon and Bangime Languages Project



(CC) BY © Jeff Heath and the Dogon and Bangime Languages Project

[Xysmalobium heudelotianum](#) N. E. Br. .

- bàrmà-ónjí . "trailing vine sp."



(CC) BY-NC © Rob Burrett



(CC) BY-NC © Rob Burrett



(CC) BY © Jeff Heath and the Dogon and Bangime Languages Project

Order: Lamiales

Family: Acanthaceae

[Ruellia cyanea](#) Boj. ex Nees .

- kǐrgà sámbè . "herb sp."



(CC) BY © Jeff Heath and the Dogon and Bangime Languages Project



(CC) BY © Jeff Heath and the Dogon and Bangime Languages Project



(CC) BY © Jeff Heath and the Dogon and Bangime Languages Project

Family: Bignoniaceae

[Stereospermum kunthianum](#) Cham. .

- **pópóllù:\pópóllè** . "tree sp."



(CC) BY-NC © Bart Wursten



(CC) BY-NC © Bart Wursten



(CC) BY © Jeff Heath and the Dogon and Bangime
Languages Project

Family: Lamiaceae

[Vitex doniana](#) Sweet .

- **mǐn-gó\mǐné** . "tree sp."



(CC) BY © Jeff Heath and the Dogon and Bangime
Languages Project



(CC) BY-NC-SA © Research Institute Senckenberg



(CC) BY © Jeff Heath and the Dogon and Bangime
Languages Project

Family: Pedaliaceae

[Rogeria adenophylla](#) .

- **[ə̀bǐyè-mbò] -dúgò:\[ə̀bǐyè-mbò] -dúgè:** . "tall herb sp.". Lit. "orphans-sorcery".



(CC) BY © Jeff Heath and the Dogon and Bangime
Languages Project



(CC) BY © Jeff Heath and the Dogon and Bangime
Languages Project



(CC) BY © Jeff Heath and the Dogon and Bangime
Languages Project

Order: Malvales

Family: Malvaceae

[Abutilon glaucum](#) (Forst. f.) Schltld. .

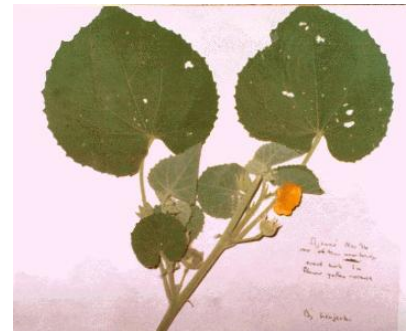
- àkwâ: . "bush sp."



(CC) BY © Jeff Heath and the Dogon and Bangime
Languages Project



(CC) BY © Jeff Heath and the Dogon and Bangime
Languages Project



(CC) BY © Jeff Heath and the Dogon and Bangime
Languages Project

[Grewia bicolor](#) Juss. .

- òbà nálá:\\òbè nálé: . "shrub sp.". Lit. "flexible.branch good".



(CC) BY © Jeff Heath and the Dogon and Bangime Languages Project



(CC) BY © Jeff Heath and the Dogon and Bangime Languages Project



(CC) BY © Jeff Heath and the Dogon and Bangime Languages Project

[Sida cerradoensis](#) Krapov. .

- yá-yágárá-ŋó\yá-yágárá . "bush sp."



(CC) BY © Jeff Heath and the Dogon and Bangime Languages Project



(CC) BY © Jeff Heath and the Dogon and Bangime Languages Project



(CC) BY © Jeff Heath and the Dogon and Bangime Languages Project

Order: Myrtales

Family: Combretaceae

[Anogeissus leiocarpa](#) (DC.) Guill. & Perr. .

- sògùlù:\sògólè . "tree sp."
- sògólù:\sògólè . "tree sp."



(CC) BY © Jeff Heath and the Dogon and Bangime Languages Project



(CC) BY © Jeff Heath and the Dogon and Bangime Languages Project



(CC) BY © Jeff Heath and the Dogon and Bangime Languages Project

[Combretum glutinosum](#) Perr. ex DC. .

- **gùjá-gùjá:** \gùjé-gùjê: . "tree sp."



(CC) BY © Jeff Heath and the Dogon and Bangime Languages Project



(CC) BY © Jeff Heath and the Dogon and Bangime Languages Project



(CC) BY © Jeff Heath and the Dogon and Bangime Languages Project

[Combretum micranthum](#) G. Don .

- **swâ:** \swê: . "shrub sp."



(CC) BY © Jeff Heath and the Dogon and Bangime Languages Project



(CC) BY © Jeff Heath and the Dogon and Bangime Languages Project



(CC) BY © Jeff Heath and the Dogon and Bangime Languages Project

[Guiera senegalensis](#) J.F.Gmel. .

- **túgúnù:\túgúñi** . "shrub sp."



(CC) BY © Jeff Heath and the Dogon and Bangime
Languages Project



(CC) BY © Jeff Heath and the Dogon and Bangime
Languages Project



(CC) BY © Jeff Heath and the Dogon and Bangime
Languages Project

Order: Rosales

Family: Moraceae

[Ficus abutilifolia](#) (Miq.) Miq. .

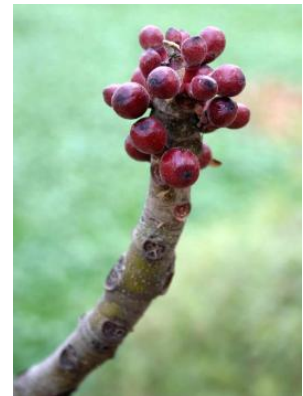
- **kùmbè-gùndé** . "fig tree sp.". Lit. "fig-slave".
- **pègòlò: kùmbù:\pègòlò: kùmbè** . "fig tree sp.". Lit. "mountain's fig".



(CC) BY © Jeff Heath and the Dogon and Bangime
Languages Project



(CC) BY © Jeff Heath and the Dogon and Bangime
Languages Project



(CC) BY-NC © Bart Wursten

[Ficus platyphylla](#) Del. .

- **kùmbù nálá:\kùmbè nálé** . "fig tree sp.". Lit. "fig main".



(CC) BY © Jeff Heath and the Dogon and Bangime
Languages Project



(CC) BY © Jeff Heath and the Dogon and Bangime
Languages Project



(CC) BY © Jeff Heath and the Dogon and Bangime
Languages Project

Ficus sur Forssk. .

- **gàm-kóndò: [tone]** . "fig tree sp."
- **gàm-gǝndò: \\gàm-gǝndè:** . "fig tree sp.". Lit. "fig-pull.off.with.hook".
- **gàm- [gòndé-ŋgò] \\gàm-gòndé** . "fig tree sp.". Lit. "fig-pull.off.with.hook".



(CC) BY © Jeff Heath and the Dogon and Bangime
Languages Project



(CC) BY © Jeff Heath and the Dogon and Bangime
Languages Project



(CC) BY © Jeff Heath and the Dogon and Bangime
Languages Project

Family: Rhamnaceae

Ziziphus mucronata . Characteristics: 2 - 5 m tall, yellowish-green flowers, greyish-brown bark, thorns in pairs.

Biotope: river course, arid area. ([Carruthers \(eds.\) 2000](#): 263; [Van Rooyen et al. 2001](#): 34)

- **dàl-sěndè-ŋgò \\dàl-sěndè** . "shrub sp. (false jujube)". Lit. "Dal.zone-...".



Public Domain by Christfried Naumann



(CC) BY-NC-SA © Research Institute Senckenberg



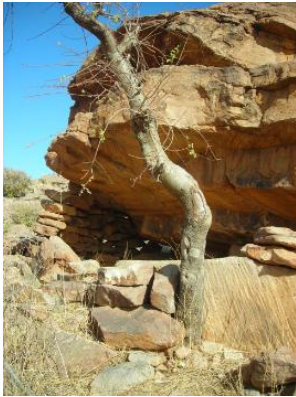
Public Domain by Gertrud Boden

Order: Sapindales

Family: Burseraceae

[Commiphora africana](#) (Rich.) Engl. .

- kùrà-jàngú\\kùrà-jàngé . "bdellium (shrub)". Lit. "wild.grape-repound".



(CC) BY © Jeff Heath and the Dogon and Bangime

Languages Project



(CC) BY © Jeff Heath and the Dogon and Bangime

Languages Project



(CC) BY © Jeff Heath and the Dogon and Bangime

Languages Project

[Commiphora pedunculata](#) (Kotschy & Peyr.) Engl. .

- sòmbiyé . "shrub sp.".



(CC) BY © Jeff Heath and the Dogon and Bangime

Languages Project



(CC) BY © Jeff Heath and the Dogon and Bangime

Languages Project

Order: Solanales

Family: Convolvulaceae

[Ipomoea dichroa](#) (Roem. et Schult.) Choisy .

- tóndé-ηγó\\tóndé . "liana sp."
- tòndè yágàrà-ηγò\\-yágàrà . "liana sp."



(CC) BY © Jeff Heath and the Dogon and Bangime
Languages Project



(CC) BY © Jeff Heath and the Dogon and Bangime
Languages Project



(CC) BY © Jeff Heath and the Dogon and Bangime
Languages Project

Family: Solanaceae

[Physalis lagascae](#) R. & S. .

- tù:ltà:là- [sǒ:mè-ηγò] . "herb sp.". Lit. "nonsense-grass".



(CC) BY © Jeff Heath and the Dogon and Bangime
Languages Project



(CC) BY © Jeff Heath and the Dogon and Bangime
Languages Project



(CC) BY © Jeff Heath and the Dogon and Bangime
Languages Project

Order: Vitales

Family: Vitaceae

[Ampelocissus africana](#) (Lour.) Merrill .

- ðm̀̀l̀̀-̀̀k̀̀r̀̀â:    [ðm̀̀l̀̀-̀̀mb̀̀] -k̀̀r̀̀ê: . "liana sp."
- k̀̀r̀̀-g̀̀á: k̀̀r̀̀à:    k̀̀r̀̀-g̀̀á: k̀̀r̀̀ê: . "liana sp."



(CC) BY © Jeff Heath and the Dogon and Bangime Languages Project



(CC) BY © Jeff Heath and the Dogon and Bangime Languages Project



(CC) BY © Jeff Heath and the Dogon and Bangime Languages Project

Class: other

Order: Fabales

Family: Fabaceae

[Senegalia ataxacantha](#) .

- ðl̀̀ p̀̀l̀̀-̀̀ŋg̀̀ò    ðl̀̀ p̀̀l̀̀ . "scrub acacia sp. (often liana)"



(CC) BY © Jeff Heath and the Dogon and Bangime Languages Project



(CC) BY © Jeff Heath and the Dogon and Bangime Languages Project



(CC) BY © Jeff Heath and the Dogon and Bangime Languages Project

[Senegalia laeta](#) .

- ẁ̀ànd̀̀:    ẁ̀ànd̀̀ê: . "acacia sp."



(CC) BY © Jeff Heath and the Dogon and Bangime
Languages Project



(CC) BY © Jeff Heath and the Dogon and Bangime
Languages Project



(CC) BY © Jeff Heath and the Dogon and Bangime
Languages Project

[Senegalia macrostachya](#) .

- ðlè gùndé-ηgò\ðlè gùndé . "acacia sp.".



(CC) BY © Jeff Heath and the Dogon and Bangime
Languages Project



(CC) BY © Jeff Heath and the Dogon and Bangime
Languages Project



(CC) BY © Jeff Heath and the Dogon and Bangime
Languages Project

Order: Polypodiales

Family: Pteridaceae

[Actiniopteris radiata](#) .

- gólò ñàlàl-ηgò\gólò ñàlàlè . "fern sp.". Lit. "fire's co-wife".



(CC) BY © Jeff Heath and the Dogon and Bangime Languages Project



(CC) BY © Jeff Heath and the Dogon and Bangime Languages Project



(CC) BY © Jeff Heath and the Dogon and Bangime Languages Project

Kingdom: other

Phylum: other

Class: other

Order: other

Family: other

[Sternocera interrupta](#) .

- kònjǔ: gàngàlè\gàngàl-mbò . "buprestid beetle (black with white spots)".



(CC) BY © Ben Sale



(CC) BY © Jeff Heath and the Dogon and Bangime Languages Project



(CC) BY © Jeff Heath and the Dogon and Bangime Languages Project

[Trachyderma hispida](#) .

- kèkèbè kùlè-gé:kèkèbè-mbò kùlè-gá: . "darkling beetle sp. in houses".



(CC) BY © Jeff Heath and the Dogon and Bangime

Languages Project