

# Ampari names for Plants and Animals

edited by Jeffrey Heath and Steven Moran

This document was created from [Tsammalex](#) on 2015-05-13.

Tsammalex is published under a Creative Commons Attribution 4.0 International License and should be cited as

*Christfried Naumann & Steven Moran & Guillaume Segerer & Robert Forkel (eds.)  
2015. Tsammalex: A lexical database on plants and animals. Leipzig: Max Planck  
Institute for Evolutionary Anthropology. (Available online at  
<http://tsammalex.clld.org>, Accessed on 2015-05-13.)*

A full list of contributors is available at <http://tsammalex.clld.org/contributors>

The list of references cited in this document is available at  
<http://tsammalex.clld.org/sources>

**Kingdom: Animalia**

**Phylum: Arthropoda**

**Class: Arachnida**

**Order: Prostigmata**

**Family: Leeuwenhoekiidae**

[Dinothrombium tinctorium](#) .

- **nă: sùgò** . "small scarlet-red velvet mite that emerges in fields after rains".



(CC) BY © Jeff Heath and the Dogon and Bangime  
Languages Project



(CC) BY © Jeff Heath and the Dogon and Bangime  
Languages Project

**Order: Solifugae**

**Family: Galeodidae**

[Galeodes olivieri](#) Simon, 1879 .

- **àrà** . "wind scorpion, sun scorpion".
- **àrà-bójèrè** . "wind scorpion, sun scorpion".



(CC) BY © Jeff Heath and the Dogon and Bangime  
Languages Project



(CC) BY © Jeff Heath and the Dogon and Bangime  
Languages Project



(CC) BY © Jeff Heath and the Dogon and Bangime  
Languages Project

**Class: Chilopoda**

**Order: Scolopendromorpha**

**Family: Scolopendridae**

[Scolopendra](#) .

- **nóndó tá:rè** . "large biting centipede (scolopender)".



(CC) BY © Sam Fraser-Smith



(CC) BY-SA © Matt Reinbold



(CC) BY © Jeff Heath and the Dogon and Bangime Languages Project

**Class: Diplopoda**

**Order: Spirostreptida**

**Family: Spirostreptidae**

[Archispirostreptus](#) .

- **rámà kúmàšì** . "giant millipede".



(CC) BY © Jeff Heath and the Dogon and Bangime Languages Project



(CC) BY © Jeff Heath and the Dogon and Bangime Languages Project

**Class: Insecta**

**Order: Coleoptera**

**Family: Cerambycidae**

[\*Crossotus albicollis\*](#) Guérin-Méneville, 1844 .

- **gĩ:** "kèwè" . "longhorn beetle (leaf pest)".



(CC) BY © Jeff Heath and the Dogon and Bangime  
Languages Project



(CC) BY © Jeff Heath and the Dogon and Bangime  
Languages Project

### Family: Cetoniidae

[\*Pachnoda cordata\*](#) (Drury, 1773) .

- **kè:wè sěy** "témù" . "millet-eating cetonid beetle sp. (orange with large black blotches)".



(CC) BY © Jeff Heath and the Dogon and Bangime  
Languages Project



(CC) BY © Jeff Heath and the Dogon and Bangime  
Languages Project



(CC) BY-SA ©

[\*Rhabdotis sobrina\*](#) (Gory & Percheron, 1833) .

- **kéw**"é **tómbò** . "cetonid beetle sp., dark green with white streaks and spots, in sheath in ground (said to eat acacia flowers)".



(CC) BY © Jeff Heath and the Dogon and Bangime Languages Project



(CC) BY © Jeff Heath and the Dogon and Bangime Languages Project



(CC) BY © Biodiversity Heritage Library

### Family: Dynastidae

[Phyllognathus burmeisteri](#) Arrow, 1911 .

- ògú kèwè . "rhinoceros beetle (male with horn)".



(CC) BY © Jeff Heath and the Dogon and Bangime Languages Project



(CC) BY © Jeff Heath and the Dogon and Bangime Languages Project

### Family: Meloidae

[Lydomorphus dusaulti](#) .

- kèwè kàjí kórò . "shiny greenish black blister beetle with red thorax".



(CC) BY © Jeff Heath and the Dogon and Bangime  
Languages Project

[Zonitoscema gigantea](#) .

- s̩: "s̩ b̩:mb̩ . "large tan-colored blister beetle sp. that eats young millet heads".

**Order: Dermaptera**

**Family: Forficulidae**

[Forficula senegalensis](#) Audinet-Serville, 1838 .

- s̩y̩ " k̩w̩ . "earwig (insect with forked tail)".



(CC) BY © Jeff Heath and the Dogon and Bangime  
Languages Project



(CC) BY © Jeff Heath and the Dogon and Bangime  
Languages Project

**Order: Diptera**

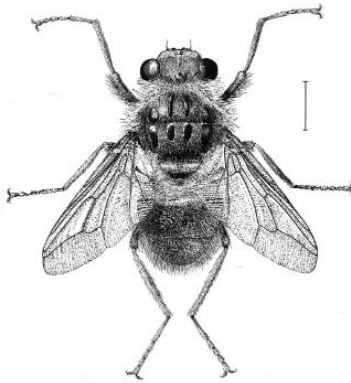
**Family: Oestridae**

[Hypoderma](#) .

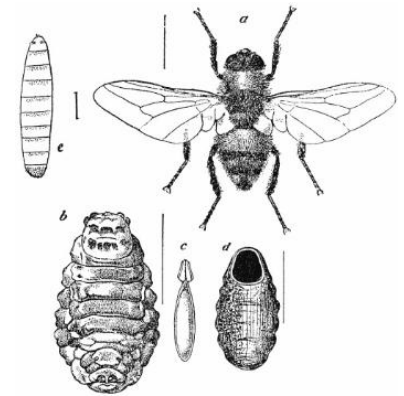
- k̩w̩ . "botfly sp. (adult mouthless, larva parasitic on cows)".



(CC) BY-SA ©



(CC) BY-NC-SA © National Museum of Natural History  
Collections



PD US ©

**Family: Tachinidae**

**Musca** .

- bàràndá . "banana".

**Sarcophaga** .

- kòròndé jé:nĩ . "large, sluggish flesh fly".



(CC) PUBLICDOMAIN © Jan Moravec



(CC) BY-NC-SA © BioImages - the Virtual Fieldguide  
(UK)



(CC) BY © Jeff Heath and the Dogon and Bangime  
Languages Project

**Order: Hemiptera**

**Family: Belostomatidae**

**Lethocerus** .

- mí kèwè . "giant water bug".



(CC) BY © Jeff Heath and the Dogon and Bangime  
Languages Project



(CC) BY © Jeff Heath and the Dogon and Bangime  
Languages Project



(CC) BY © Jeff Heath and the Dogon and Bangime  
Languages Project

## Family: Coreidae

### [Anoplocnemis curvipes](#) .

- **núnké kéwé** . "tip wilter bug (leaf-footed bug, legume-eatiing)".



(CC) BY © Jeff Heath and the Dogon and Bangime  
Languages Project

## Order: Hymenoptera

### Family: Apidae

### [Apis mellifera](#) Linnaeus, 1758 .

- **ő: mbiyè** . "honey bee".



(CC) BY-SA ©



(CC) BY © Treasha Duncan

### Family: Eumenidae



*Delta emarginatum* (Linnaeus, 1758) .

- gàndá-gàndà . "black mud wasp (mud-dauber)".



(CC) BY-SA ©



(CC) BY © Jeff Heath and the Dogon and Bangime

Languages Project



(CC) BY-SA ©

*Polistes* .

- gàndà-gàndá jèrè . "brownish paper wasp sp. with yellow cross-bands, nest in leaves".



(CC) BY-NC © Biopix



(CC) BY © Miroslav Deml



(CC) BY-NC-SA © Flickr

**Family: Formicidae**

*Camponotus maculatus* (Fabricius, 1782) .

- sènjé-nĩ: kùrùkùrù . "honey ant (yellow, fast-moving)".



(CC) BY-SA © April Nobile



(CC) BY © Jeff Heath and the Dogon and Bangime

Languages Project

**Messor** .

- **túwúnù** . "large black grain-eating ant sp. in fields".



(CC) BY-NC-SA © April Nobile



(CC) BY © Jeff Heath and the Dogon and Bangime Languages Project



(CC) BY-NC-SA © April Nobile

**Pachycondyla** .

- **sènjè ní-kòrò** . "stinging black ant sp.".
- **sènjè-ní kiriyô** : . "winged form of Pachycondyla ant".



(CC) BY © Jeff Heath and the Dogon and Bangime Languages Project



(CC) BY-NC-SA © April Nobile



(CC) BY-NC-SA © April Nobile

**Order: Lepidoptera**

**Family: Crambidae**

**Coniesta ignefusalis** Hampson, 1919 .

- **sě:** **tùmà sǐ** : . "millet stem-borer (snout-moth caterpillar in millet stem)".

**Family: Sphingidae**

**Agrius convolvuli** Linnaeus, 1758 .

- **sǐ:** **mùndí-mùndí bò:mbé** . "large sleek sphingid butterfly chrysalis in plant roots or manure, dark brown with black spots on side, without feet".



(CC) BY © Jeff Heath and the Dogon and Bangime  
Languages Project

**Order: Neuroptera**

**Family: Myrmeleontidae**

[Lachlathetes furfuraceus](#) (Rambur, 1842) .

- yǒ:-pùrà kàyà . "ant lion sp. (adult) with colored wings".



(CC) BY © Jeff Heath and the Dogon and Bangime  
Languages Project



(CC) BY © Jeff Heath and the Dogon and Bangime  
Languages Project



(CC) BY © Jeff Heath and the Dogon and Bangime  
Languages Project

**Order: Orthoptera**

**Family: Acrididae**

[Anacridium melanorhodon](#) .

- tòróntàrà . "grasshopper sp. (tree locust)".



(CC) BY © Jeff Heath and the Dogon and Bangime  
Languages Project

[Cataloipus cymbiferus](#) .

- kàyá yà jírìwè . "grasshopper sp."



(CC) BY © Jeff Heath and the Dogon and Bangime  
Languages Project

[Heteracris annulosa](#) .

- sǎḡ káyà . "grasshopper sp."



(CC) BY © Jeff Heath and the Dogon and Bangime  
Languages Project



(CC) BY © Jeff Heath and the Dogon and Bangime  
Languages Project



(CC) BY © Jeff Heath and the Dogon and Bangime  
Languages Project

[Homoxyrhopes punctipennis](#) .

- pòlí káyà . "grasshopper sp."



(CC) BY © Jeff Heath and the Dogon and Bangime  
Languages Project



(CC) BY © Jeff Heath and the Dogon and Bangime  
Languages Project

[Kraussaria angulifera](#) .

- bójí . "grasshopper sp."



(CC) BY © Jeff Heath and the Dogon and Bangime  
Languages Project



(CC) BY © Jeff Heath and the Dogon and Bangime  
Languages Project

[Kraussella amabile](#) .

- ànjí:-kàyà . "grasshopper sp.". Lit. "roselle-grasshopper".



(CC) BY © Jeff Heath and the Dogon and Bangime  
Languages Project



(CC) BY © Jeff Heath and the Dogon and Bangime  
Languages Project

[Oedaleus senegalensis](#) .

- kàyá péré . "grasshopper sp.".



(CC) BY © Jeff Heath and the Dogon and Bangime  
Languages Project



(CC) BY © Jeff Heath and the Dogon and Bangime  
Languages Project



(CC) BY-SA ©

[Schistocerca gregaria](#) .

- kàyá sé:njī . "pilgrim locust (gregarious phase)".



PD ©



Public Domain by



PD NASA ©

[Scintharista notabilis](#) .

- kàyá-pèrè . "grasshopper sp."



(CC) BY © Jeff Heath and the Dogon and Bangime Languages Project



(CC) BY © Jeff Heath and the Dogon and Bangime Languages Project



PD ©

[Sherifuria haningtoni](#) .

- kàyá yèrè . "grasshopper sp."



(CC) BY © Jeff Heath and the Dogon and Bangime Languages Project



(CC) BY © Jeff Heath and the Dogon and Bangime Languages Project



(CC) BY © Jeff Heath and the Dogon and Bangime Languages Project

**Family: Pyrgomorphidae**

[Chrotogonus senegalensis](#) .

- kàyá démbè . "toad grasshopper".



(CC) BY © Jeff Heath and the Dogon and Bangime  
Languages Project



(CC) BY © Jeff Heath and the Dogon and Bangime  
Languages Project

[Poecilocerus bufonius hieroglyphicus](#) .

- bàmbà-pöy káyà . "grasshopper sp.".



(CC) BY © Jeff Heath and the Dogon and Bangime  
Languages Project



(CC) BY © Jeff Heath and the Dogon and Bangime  
Languages Project

**Phylum: Chordata**

**Class: Actinopterygii**

**Order: Characiformes**

**Family: Alestidae**

[Hydrocynus forskahlii](#) .

- ná:ráw<sup>n</sup> . "tigerfish sp.".



(CC) BY © Jeff Heath and the Dogon and Bangime Languages Project



(CC) BY © Jeff Heath and the Dogon and Bangime Languages Project



(CC) BY © Jeff Heath and the Dogon and Bangime Languages Project

**Order: Cypriniformes**

**Family: Cyprinidae**

**[Labeo senegalensis](#)** .

- ná:ráw . "light-colored labeo sp (fish)".



(CC) BY © Jeff Heath and the Dogon and Bangime Languages Project



(CC) BY © Jeff Heath and the Dogon and Bangime Languages Project



(CC) BY © Jeff Heath and the Dogon and Bangime Languages Project

**Order: Perciformes**

**Family: Latidae**

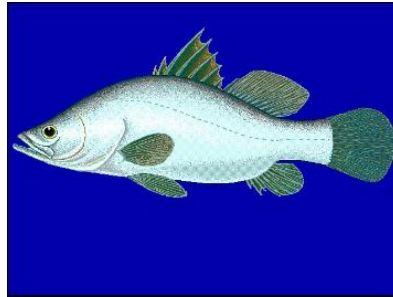
**[Lates niloticus](#)** .

- wàròwàrò dògò . "captain fish, Nile perch".





(CC) BY-NC-SA © Martin Grimm



(CC) BY © Robbie N. Cada



(CC) BY © Jeff Heath and the Dogon and Bangime Languages Project

## Order: Siluriformes

### Family: Bagridae

#### [Bagrus bajad](#) .

- kóndò . "light-colored bayad sp. (catfish)".
- kòndó bó:mbè . "light-colored bayad sp. (catfish)". Lit. "... red".



(CC) BY © Jeff Heath and the Dogon and Bangime Languages Project



(CC) BY © Jeff Heath and the Dogon and Bangime Languages Project



(CC) BY © Jeff Heath and the Dogon and Bangime Languages Project

### Family: Malapteruridae

#### [Malapterurus electricus](#) .

- májá . "electric catfish".

### Family: Mochokidae

#### [Synodontis schall](#) .

- kóndò . "spiny upside-down catfish sp.".
- kòndó kòrò . "spiny upside-down catfish sp.". Lit. "... black".



(CC) BY-SA © Peter van der Sluijs

**Family: Schilbeidae**

**[Schilbe intermedius](#)** .

- **kògùré-sě:ndi4** . "butter catfish sp."



(CC) BY © Jeff Heath and the Dogon and Bangime  
Languages Project



(CC) BY © Jeff Heath and the Dogon and Bangime  
Languages Project



(CC) BY © Jeff Heath and the Dogon and Bangime  
Languages Project

**Class: Amphibia**

**Order: Anura**

**Family: Bufonidae**

**[Amietophrynus xeros](#)** (Tandy, Tandy, Keith and Duff-MacKay, 1976) .

- **òwná** . "subdesert toad".



(CC) BY © Jeff Heath and the Dogon and Bangime Languages Project



(CC) BY © Jeff Heath and the Dogon and Bangime Languages Project



(CC) BY © Jeff Heath and the Dogon and Bangime Languages Project

### Family: Dicroglossidae

[\*Hoplobatrachus occipitalis\*](#) (Günther, 1858) .

- šàndêy . "groove-crowned bullfrog".



(CC) BY © Jeff Heath and the Dogon and Bangime Languages Project



(CC) BY © Jeff Heath and the Dogon and Bangime Languages Project



(CC) BY © Jeff Heath and the Dogon and Bangime Languages Project

**Class: Aves**

**Order: Accipitriformes**

**Family: Accipitridae**

[\*Gyps africanus\*](#) Salvadori, 1865 . Characteristics: nivore; body-length: 110 cm, wedge-shaped tail and long, narrow wings; rust-coloured below and dark above; pale head with black face and 'beard'. Biotope: savanna, woodland. ([Sinclair 1994: 70](#))

- těw kómbò . "white-backed vulture".



(CC) BY-SA © unknown



(CC) BY-SA © Mark Robinson

***Gyps rueppellii*** (A. E. Brehm, 1852) . Characteristics: carnivore; body-length: 115 cm, brown plumage; wings with dark flight feathers and pale linings. ([Sinclair 1994](#): 70)

- **dúwà** . "Rueppell's griffon vulture".



PD ©



(CC) BY-NC-SA © Gerald and Buff Corsi



PD ©

***Milvus migrans*** (Boddaert, 1783) . Characteristics: carnivore; body-length: 56 cm; long forked tail; dark plumage. ([Sinclair 1994](#): 88)

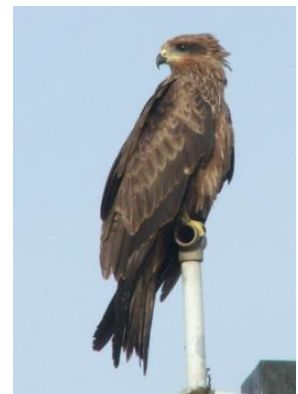
- **těw kómbò** . "kite (hawk)".



(CC) BY-SA © Thomas Kraft



(CC) BY-NC © inaturalist



(CC) BY-SA ©

**[Necrosyrtes monachus](#)** (Temminck, 1823) . Characteristics: carnivore; body-length: 70 cm; brown plumage; bare head with red skin. ([Sinclair 1994](#): 72)

- **sùgó dùwà** . "hooded vulture".



(CC) BY-SA © Atamari



(CC) BY-NC © Scott Bowers



(CC) BY-NC-SA © Steve Garvie

**Order: Apodiformes**

**Family: Apodidae**

**[Apus affinis](#)** (J. E. Gray, 1830) .

- **gǐjí m̀b̀èr̀é** . "little African swift".



(CC) MARK © creator:Thomas Hardwicke

**Order: Bucerotiformes**

**Family: Bucerotidae**

**[Tockus erythrorhynchus](#)** (Temminck, 1823) .

- **g̀òdí ámpáří** . "red-billed hornbill".



(CC) BY-NC © ellisms



(CC) BY-SA © Mehmet Karatay



(CC) BY © Biodiversity Heritage Library

[Tockus nasutus](#) (Linnaeus, 1766) .

- gòdí dèmbè . "grey hornbill".



(CC) BY-NC © inaturalist



(CC) BY-SA © Lip Kee from Singapore, Republic of Singapore



(CC) BY © Biodiversity Heritage Library

**Family: Bucorvidae**

[Bucorvus abyssinicus](#) (Boddaert, 1783) .

- úndúbè . "Abyssinian ground hornbill".



(CC) BY © Jeff Heath and the Dogon and Bangime  
Languages Project

**Order: Charadriiformes**

**Family: Burhinidae**

[Burhinus capensis](#) (Lichtenstein, 1823) .

- kòròmbá-nǐwè . "spotted thick-knee". Lit. "water.lily-bird".



(CC) BY-SA © Jutta ? unknown



(CC) BY-SA © Cburnett?



(CC) BY © Jeff Heath and the Dogon and Bangime  
Languages Project

**Family: Jacanidae**

[Actophilornis africanus](#) (Gmelin, 1789) . Characteristics: carnivore; body-length: 28 cm; red-brown body; white throat; yellow breast; black neck; blue bill and forehead. Biotope: flooded grassland, freshwater. ([Sinclair 1994](#): 102)

- kúrúmbá níwè . "jacana".



(CC) BY ©



(CC) BY-SA ©

**Order: Ciconiiformes**

**Family: Ciconiidae**

[\*Ciconia abdimii\*](#) Lichtenstein, 1823 . Characteristics: carnivore; body-length: 76 cm; black plumage; white lower back and rump; greenish bill and legs;. ([Sinclair 1994](#): 58)

- **pùrà:mpúrá** . "Abdim's stork".



Public Domain by Taa DoBeS team  
(Boden/Güldemann/Naumann)



Public Domain by Taa DoBeS team  
(Boden/Güldemann/Naumann)



Public Domain by Taa DoBeS team  
(Boden/Güldemann/Naumann)

**Order: Columbiformes**

**Family: Columbidae**

[\*Columba guinea\*](#) Linnaeus, 1758 .

- **gùmbá-gùmbà** . "speckled pigeon".





(CC) BY-SA © unknown (Ltshears)



(CC) BY-SA © unknown (ChriKo)

**Columba livia** Gmelin, 1789 .

- **gùmbá-gùmbà** . "rock pigeon, rock dove".
- **gùmbá-gùmbà** . "pigeon (domestic)".



(CC) BY-SA © Mike Pennington



(CC) BY-SA © J.M.Garg

**Oena capensis** (Linnaeus, 1766) .

- **tèwèré géjérmà** . "long-tailed pigeon, namaqua dove".



(CC) BY-SA © Lip Kee from Singapore, Republic of Singapore



(CC) BY-NC-SA © David Blank



[http://en.wikipedia.org/wiki/public\\_domain](http://en.wikipedia.org/wiki/public_domain) © C. G. Finch-Davies (1875-1920)

***Streptopelia senegalensis*** (Linnaeus, 1766) .

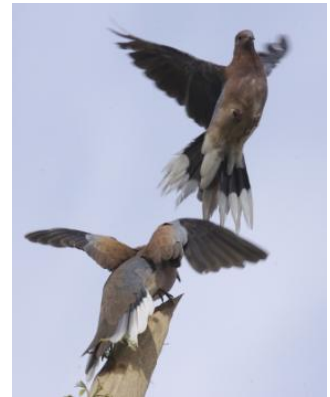
- **téwéré** . "laughing dove".



(CC) BY-SA ©



(CC) BY-SA © Lip Kee



(CC) BY-SA ©

***Streptopelia vinacea*** (Gmelin, 1789) .

- **tégú-tëndé** . "doves with black nape rings (vinaceous dove; mourning dove)".



(CC) BY ©

**Order: Coraciiformes**

**Family: Coraciidae**

***Coracias abyssinicus*** Hermann, 1783 .

- **tèṅgó ñdórí** . "Abyssinian roller".



PD ©



(CC) BY-SA ©

**Family: Meropidae**

[\*Merops albicollis\*](#) Vieillot, 1817 .

- **só: níwè** . "white-throated bee-eater".



(CC) BY © Ron Knight from Seaford, East Sussex,  
United Kingdom



(CC) BY-SA ©



(CC) BY © Gerhard Singer

**Order: Cuculiformes**

**Family: Cuculidae**

[\*Centropus senegalensis\*](#) (Linnaeus, 1766) .

- **ùrú-dúdù** . "Senegal coucal".



(CC) BY © ThomHasi



(CC) BY © Jeff Heath and the Dogon and Bangime  
Languages Project

**Order: Falconiformes**

**Family: Falconidae**

[\*Falco peregrinus\*](#) Tunstall, 1771 . Characteristics: carnivore; body-length: 34-38 cm, black forehead and crown; black moustach-like marks in the face; white underside speckled with black. Biotope: rocky area. ([Sinclair 1994](#): 88)

- **těw kómbò** . "peregrine falcon".



(CC) BY-SA © Carl Mueller



(CC) BY-SA © Keven Law



Public Domain by Naumann

***Falco tinnunculus*** Linnaeus, 1758 . Characteristics: carnivore; body-length: 33-39 cm, chestnut back with black spots; grey head; barred and spotted underwing. Biotope: rocky area, mountains. ([Sinclair 1994](#): 92)

- óndó tèt . "rock kestrel".



(CC) BY-SA ©



(CC) BY-SA ©



(CC) BY-SA ©

**Order: Galliformes**

**Family: Numididae**

***Numida meleagris*** (Linnaeus, 1758) . Characteristics: omnivore; body-length: 56 cm; grey plumage with white dots; blue and red skin on the head. Biotope: grassland, woodland. ([Sinclair 1994](#): 102)

- dōw<sup>n</sup> . "guinea-fowl".



(CC) BY-SA ©



(CC) BY © Jeff Heath and the Dogon and Bangime Languages Project



(CC) BY © Chris Eason

### Family: Phasianidae

[Francolinus bicalcaratus](#) (Linnaeus, 1766) .

- **ígó** . "double-spurred francolin".



(CC) BY © Biodiversity Heritage Library



(CC) BY © Jeff Heath and the Dogon and Bangime Languages Project



(CC) BY © Jeff Heath and the Dogon and Bangime Languages Project

[Ptilopachus petrosus](#) (Gmelin, 1789) .

- **wé gùrù** . "stone partridge".



(CC) BY-SA ©



(CC) BY © Jeff Heath and the Dogon and Bangime  
Languages Project



(CC) BY © Jeff Heath and the Dogon and Bangime  
Languages Project

**Order: Gruiformes**

**Family: Gruidae**

[\*Balearica pavonina\*](#) (Linnaeus, 1758) .

- kúmà . "crowned crane".



Public Domain by



(CC) BY ©

**Family: Otididae**

[\*Eupodotis senegalensis\*](#) (Vieillot, 1820) .

- àgá síjà . "white-bellied (= Senegal) bustard".



(CC) BY-SA © Lip Kee



(CC) BY-SA ©



(CC) MARK © Creator:Claude Gibney Finch-Davies

***Neotis denhami*** (Children & Vigors, 1826) .

- **dùgú-pá<sup>n</sup>-pá<sup>n</sup>** . "Denham's bustard".



Public Domain by



(CC) BY-SA ©



(CC) BY-NC-SA © Bernard DUPONT

**Order: Passeriformes**

**Family: Cisticolidae**

***Spiloptila clamans*** (Cretzschmar, 1826) .

- **šě: níwè** . "cricket warbler".



(CC) BY © Jeff Heath and the Dogon and Bangime Languages Project



(CC) BY © Jeff Heath and the Dogon and Bangime Languages Project



Public Domain by

**Family: Corvidae**

**[Corvus albus](#)** Statius Muller, 1776 .

- **kà:"ká:"** . "pied crow".



(CC) BY-SA © Thomas Schoch



(CC) BY-SA © Myburgh

**[Ptilostomus afer](#)** (Linnaeus, 1766) .

- **nĩḡé-kòrò** . "piapiac (magpie)".
- **ná: níwè** . "piapiac (magpie)".



(CC) BY-SA ©



(CC) BY © Jeff Heath and the Dogon and Bangime Languages Project



(CC) BY-SA ©

**Family: Emberizidae**

**[Emberiza tahapisi](#)** A. Smith, 1836 .

- **sò:ḡúré** . "cinnamon-breasted rock bunting".





(CC) BY © Jeff Heath and the Dogon and Bangime Languages Project



(CC) BY © Jeff Heath and the Dogon and Bangime Languages Project



(CC) BY © Jeff Heath and the Dogon and Bangime Languages Project

**Family: Estrildidae**

[Lagonosticta senegala](#) (Linnaeus, 1766) .

- **mòndó-mà-dàrèdàrè** . "red-billed firefinch".



(CC) BY © Original uploader was ThomHasi at en.wikipedia



Public Domain by Veli Pohjonen



(CC) BY © msafari2425

[Uraeginthus bengalus](#) (Linnaeus, 1766) .

- **mòndó-mà-dàrèdàrè** . "red-cheeked cordon-bleu".



(CC) BY ©



(CC) BY-SA ©



Public Domain by

**Family: Hirundinidae**

[Ptyonoprogne fuligula pusilla](#) (Zedlitz, 1908) .

- **káwá gèjǐmbéré** . "rock martin (swallow)".



(CC) BY © Jeff Heath and the Dogon and Bangime Languages Project



(CC) BY © Jeff Heath and the Dogon and Bangime Languages Project



(CC) BY © Jeff Heath and the Dogon and Bangime Languages Project

**Family: Muscicapidae**

[Thamnolaea cinnamomeiventris](#) (Lafresnaye, 1836) .

- **kǐwó tò:ndí** . "cliff chat, white-crowned cliff-chat".



(CC) BY ©



(CC) BY ©



Public Domain by

**Family: Nectariniidae**

[Nectarinia pulchella](#) (Linnaeus, 1766) .

- **nǐwé tǎngàrùgà** . "beautiful (= long-tailed) sunbird".



(CC) BY © Bob



(CC) BY © Biodiversity Heritage Library



(CC) BY © Jeff Heath and the Dogon and Bangime Languages Project

### Family: Passeridae

*Passer griseus* (Vieillot, 1817) .

- ní: pòtòròmá tòmbò . "grey-headed sparrow".



(CC) BY-SA ©



(CC) BY © Jeff Heath and the Dogon and Bangime Languages Project



(CC) BY-SA © Tom Tarrant

### Family: Ploceidae

*Ploceus cucullatus* (Statius Muller, 1776) .

- tóróy"á . "village weaver (bird)".



(CC) BY © Simon J. Tonge



(CC) BY © Simon J. Tonge



(CC) BY © Simon J. Tonge

[Quelea quelea](#) (Linnaeus, 1758) .

- **nǎw<sup>ni</sup> ɲòw<sup>ni</sup>** . "black-faced dioch (bird)".



(CC) BY © Pawel Ryszawa



(CC) MARK © Creator:John Gerrard Keulemans



(CC) BY-SA © Alastair Rae

**Family: Pycnonotidae**

[Pycnonotus barbatus](#) (Desfontaines, 1789) .

- **nǎ: pótórómá** . "bulbul".



(CC) BY © Valentina



(CC) BY-SA © Lip Kee Yap



Author died more than 70 years ago public domain  
images ©

**Family: Sturnidae**

[Buphagus africanus](#) Linnaeus, 1766 .

- **dùrú níwè** . "oxpecker (bird)".



(CC) BY-SA © Steve Garvie from Dunfermline, Fife, Scotland



(CC) BY-SA © Steve Garvie from Dunfermline, Fife, Scotland



(CC) BY © Biodiversity Heritage Library

**[Lamprotornis caudatus](#)** (Stattus Muller, 1776) .

- **kòrróŋ-kàrráy** . "long-tailed glossy starling".



(CC) BY-SA © Salix



(CC) BY © Thom Haslam



(CC) BY © Biodiversity Heritage Library

**[Lamprotornis pulcher](#)** (Stattus Muller, 1776) .

- **kènjè òíní níwè** . "chestnut-bellied starling".



(CC) BY-SA © ChriKo



(CC) BY © Jeff Heath and the Dogon and Bangime Languages Project



(CC) BY © Jeff Heath and the Dogon and Bangime Languages Project

[Onychognathus neumanni](#) (Alexander, 1908) .

- **ságúwá** . "crag chestnut-winged (= Neumann's) starling".

**Family: Viduidae**

[Vidua chalybeata](#) (Statius Muller, 1776) .

- **nĩ: gára** . "village indigobird".



(CC) BY-NC-SA © David Blank



(CC) BY-SA © Hectonichus



(CC) BY © Jeff Heath and the Dogon and Bangime

Languages Project

[Vidua macroura](#) (Pallas, 1764) .

- **kà:ró kùnjây** . "pin-tailed whydah (esp. breeding male)".



(CC) BY-SA © Anonymous



(CC) BY-NC © Flickr



(CC) BY-NC © Mike Comber

[Vidua orientalis](#) Heuglin, 1870 .

- **kà:ró kùnjây** . "Sahel paradise whydah (esp. breeding male)".

**Order: Pelecaniformes**

**Family: Ardeidae**

[Bubulcus ibis](#) (Linnaeus, 1758) . Characteristics: carnivore; body-length: 54 cm; white and light brown plumage; yellow bill; breeding bird has a red bill; often found in association with cattle. Biotope: grassland. ([Sinclair 1994](#): 54)

- **bùrùgú-síjâ:y** . "cattle egret".



(CC) BY-SA © Atamari



(CC) BY-SA © Atamari



(CC) BY © Jeff Heath and the Dogon and Bangime Languages Project

**Order: Piciformes**

**Family: Picidae**

[Dendropicos goertae](#) (Statius Muller, 1776) .

- pòm̀b̀òr̀ó tòm̀b̀ù . "grey woodpecker".



(CC) BY ©



(CC) BY-SA ©



(CC) BY © Jeff Heath and the Dogon and Bangime Languages Project

**Order: Psittaciformes**

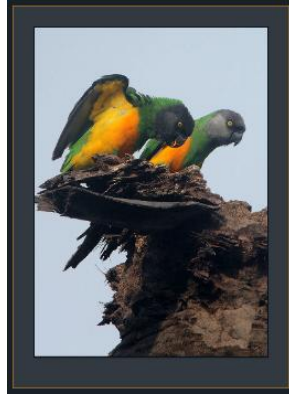
**Family: Psittacidae**

[Poicephalus senegalus](#) (Linnaeus, 1766) .

- gô: . "Senegal (= yellow-bellied) parrot".



(CC) BY-SA ©



(CC) BY-NC-SA © Steve Garvie



(CC) BY-NC-SA © David Blank

[Psittacula krameri](#) (Scopoli, 1769) .

- **káji** . "rose-ringed parakeet (= Senegal long-tailed parrot)".



(CC) BY © Jeff Heath and the Dogon and Bangime

Languages Project



(CC) BY © Jeff Heath and the Dogon and Bangime

Languages Project



(CC) BY © Jeff Heath and the Dogon and Bangime

Languages Project

**Order: Pteroclidiformes**

**Family: Pteroclididae**

[Pterocles exustus](#) Temminck, 1825 .

- **bèdèrè-bêy** . "chestnut-bellied sandgrouse".





(CC) BY-NC-SA © David Bygott



Public Domain by



Public Domain by

[Pterocles quadricinctus](#) Temminck, 1815 .

- **ni: bēti** . "four-banded sandgrouse".



(CC) MARK © creator:Louis Agassiz Fuertes



(CC) BY © Biodiversity Heritage Library



(CC) BY-SA ©

**Order: Strigiformes**

**Family: Caprimulgidae**

[Caprimulgus tristigma](#) Rüppell, 1840 .

- **ni-bēti** . "nightjar, freckled".



Public Domain by



(CC) BY ©

### Family: Strigidae

[Bubo cinerascens](#) Guerin-Meneville, 1843 .

- **dúndú** . "vermiculated (or: greyish) eagle-owl".



(CC) BY © Jeff Heath and the Dogon and Bangime

Languages Project



(CC) BY © Jeff Heath and the Dogon and Bangime

Languages Project



(CC) BY © Jeff Heath and the Dogon and Bangime

Languages Project

[Bubo lacteus](#) (Temminck, 1820) .

- **šó: bèmbĩ** . "Verreaux's (= milky) eagle-owl".



Public Domain by Taa DoBeS team

(Boden/Güldemann/Naumann)



Public Domain by Taa DoBeS team

(Boden/Güldemann/Naumann)



Public Domain by Taa DoBeS team

(Boden/Güldemann/Naumann)

**Family: Tytonidae**

[Tyto alba](#) (Scopoli, 1769) .

- òùndú tèwèrèmà . "barn owl".



(CC) BY-SA ©



Public Domain by Racheeo ??



(CC) BY-SA ©

**Order: Struthioniformes**

**Family: Struthionidae**

[Struthio camelus](#) Linnaeus, 1758 .

- ògò tàwà . "ostrich".



Public Domain by Taa DoBeS team  
(Boden/Güldemann/Naumann)



Public Domain by Taa DoBeS team  
(Boden/Güldemann/Naumann)



Public Domain by Roland Kiessling

**Order: Suliformes**

**Family: Phalacrocoracidae**

[Microcarbo africanus](#) (Gmelin, 1789) . Characteristics: carnivore; body-length: 52 cm; black plumage; pale area on the back; orange face patch; small crest on the forehead. Biotope: marine habitat. ([Sinclair 1994](#): 50)

- éró . "long-tailed cormorant".



(CC) BY-NC-SA © Bernard DUPONT



(CC) BY-NC © Greg Lasley



(CC) BY-NC-SA © Martin Grimm

**Order: Upupiformes**

**Family: Phoeniculidae**

[Phoeniculus purpureus](#) (J. F. Miller, 1784) .

- **gòréngòré** . "green wood-hoopoe".



(CC) BY ©



(CC) BY-NC-SA © Bernard DUPONT



(CC) BY-SA ©

**Family: Upupidae**

[Upupa epops](#) Linnaeus, 1758 .

- **tègé dùmú** . "hoopoe".



(CC) BY-SA ©



(CC) BY-SA ©



(CC) BY © Biodiversity Heritage Library

**Class: Mammalia**

**Order: Artiodactyla**

**Family: Bovidae**

**[Damaliscus korrigum](#)** (Ogilby, 1837) .

- **kújú má** . "korrigum (antelope close to topi), 100 kg (horselike, glossy; long horns curving backward then forward, black patch on upper legs, ochre-colored lower legs)".



(CC) BY ©



(CC) MARK © Philip Sclater



(CC) BY ©

**[Gazella dama](#)** (Pallas, 1766) .

- **gédí** . "dama gazelle, 1 m shoulder height, 40-75 kg (face and belly white, red-brown top, short curled horns)".



PD ©



PD ©



(CC) MARK © Philip Sclater

***Syncerus caffer*** (Sparrman, 1779) . Characteristics: herbivore; height: 1-1,7m; this cattle-like animal is born with a light reddish-brown coat that darkens with age until it is grey-black; both sexes are horned, but the horns of the male are especially large with thick bosses;. Biotope: savanna, scrubforest, forest, grassland. (Cillié 1997: 84)

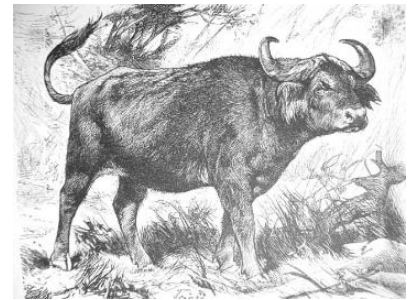
- àgá nà . "African buffalo".



(CC) BY-SA © unknown, Haplochromis?



(CC) BY © Stig Nygaard



(CC) MARK © Wikimedia Commons

***Tragelaphus scriptus scriptus*** (Pallas, 1766) .

- káró . "bushbuck, 61-100 cm shoulder height, reddish with white markings".



(CC) BY © Jeff Heath and the Dogon and Bangime Languages Project

**Family: Giraffidae**

**[Giraffa camelopardalis](#)** (Linnaeus, 1758) . Characteristics: herbivore; characteristic are the long legs and the very long neck; the whitish-yellow body is covered with brown patches that get darker as the animal ages; on top of the head are two short horns that are covered with black hair; they have a mane of short, stiff hair;. Biotope: savanna, scrubforest, grassland, woodland. ([Cillié 1997](#): 96)

- **sémbèw** . "giraffe".



Public Domain by Taa DoBeS team  
(Boden/Güldemann/Naumann)



Public Domain by Taa DoBeS team  
(Boden/Güldemann/Naumann)



Public Domain by Taa DoBeS team  
(Boden/Güldemann/Naumann)

**Family: Hippopotamidae**

**[Hippopotamus amphibius](#)** Linnaeus, 1758 . Characteristics: herbivore; height: 150-165 cm; this very large semiaquatic animal is generally grey-brown but the belly and skinfolds are yellowish-pink; it has a very large mouth; the nostrils and the eyes are on top of the head; the ears are small and rounded;. Biotope: freshwater, swamps. ([Cillié 1997](#): 106)

- **gábú** . "hippo".



Public Domain by Christfried Naumann



© Geoff Gallice

**Family: Suidae**

***Phacochoerus africanus*** (Gmelin, 1788) . Characteristics: omnivore; the body is grey and sparsely covered with long bristles; there is a mane of dark hair with lighter tips; the adults have large tusks which curve over the broad snout; the males have larger tusks than the females and have three pairs of warts on the sides of the face; they run with their tail up;. Biotope: savanna, grassland, desert. ([Cillié 1997](#): 92)

- áríyá . "warthog (boar)".



© Geoff Gallice



(CC) BY-SA © Delphine Bruyere



(CC) PUBLICDOMAIN © Trisha M Shears

**Order: Carnivora**

**Family: Canidae**

***Canis adustus adustus*** Sundevall, 1847 .

- àgá íjè . "side-striped jackal".

***Vulpes pallida*** (Cretzschmar, 1826) .

- túwéré . "sand fox, pale fox".



Public Domain by

**Family: Felidae**



***Panthera leo*** (Linnaeus, 1758) . Characteristics: carnivore; height: 110-120 cm; the Lion is the largest cat in Africa and the only one where the males have manes, the colour of the mane ranges from blonde to black; the back of the round ears is black; the males are much larger than the females and have manes;. Biotope: savanna, scrubforest, forest, grassland, mountains. (Cillié 1997: 110)

- **ágá nárà** . "lion".



(CC) BY ©



© Geoff Gallice



Public Domain by Taa DoBeS team

(Boden/Güldemann/Naumann)

***Panthera pardus*** (Linnaeus, 1758) .

- **kímè** . "leopard".



(CC) BY-SA © Haplochromis



(CC) BY-SA ©



(CC) BY-SA © user at project|JanErkamp|wikipedia|en

### Family: Herpestidae

***Atilax paludinosus*** (G.[Baron] Cuvier, 1829) . Characteristics: carnivore; body-length: 45-60cm; the fur of this large mongoose ranges from black to rust-brown; the underside and the cheeks are lighter; the head is broad and the ears lie flat;. Biotope: savanna, scrubforest, rainforest, grassland, freshwater. (Cillié 1997: 158)

- **m̀ndígà** . "marsh mongoose (dark, to 4 kg, swims along river banks))".
- **wómbó búndí** . "marsh mongoose (dark, to 4 kg, swims along river banks))".



(CC) BY-NC-SA © David Bygott



(CC) BY © Jeff Heath and the Dogon and Bangime Languages Project

***Galerella sanguinea*** (Rüppell, 1835) . Characteristics: omnivore; the colour of this Mongoose is usually correlated with the soil colour for camouflage and ranges from yellowish-grey to reddish; the long and upwards bent tail has a black tip;. (Cillié 1997: 152)

- **bùndí** . "slender mongoose (small, tip of tail black or red, less than 1 kg)".



(CC) BY-SA © Sara&Joachim



Public Domain by Andrew Smith (1797-1872)



(CC) BY © Jeff Heath and the Dogon and Bangime Languages Project

***Ichneumia albicauda*** (G.[Baron] Cuvier, 1829) . Characteristics: omnivore; body-length 60cm; the coat is grey-brown; the hind legs are very long causing the back to slant forward when it walks; the tail is covered in long white hair;. Biotope: savanna, forest, grassland, woodland. (Cillié 1997: 156)

- **mĩndìgà** . "white-tailed mongoose (to 4 kg)".
- **wómbó búndí** . "white-tailed mongoose (to 4 kg)".



(CC) BY-SA © MCSchaeffer



(CC) MARK © Frank E. Beppard



(CC) BY © Jeff Heath and the Dogon and Bangime Languages Project

### Family: Hyaenidae

**[Crocuta crocuta](#)** (Erxleben, 1777) . Characteristics: carnivore; height: 70-90 cm; the colour ranges from dull yellow to white, with irregular dark spots;it has a short mane and overall short hair; the animal has a large head with round ears, e strong neck and a sloping back;. Biotope: savanna,scrubforest, montane forest, grassland. ([Cillió 1997](#): 124)

- **kúmání** . "spotted hyena".



(CC) BY-SA © Gastrocycle



(CC) BY © Marieke Kuijpers



(CC) BY-SA © Jerry Friedman

**[Hyaena hyaena](#)** (Linnaeus, 1758) .

- **kàwà-kó:ré** . "striped hyena".



(CC) BY-NC-SA © David Bygott



(CC) BY © Simon J. Tonge



(CC) MARK © Beppard, Frank E. (Frank Evers), 1858-1925

**Family: Mustelidae**

***Ictonyx striatus*** (Perry, 1810) . Characteristics: carnivore; height 10-15cm; this short legged predator has black fur with 4 parallel, white stripes on the back; it has white marks underneath the ears and between the eyes;. Biotope: savanna, forest, grassland, woodland, semi-desert, swamps, mountains. ([Cillié 1997](#): 148)

- tíri:" b̀̀:̀̀wè . "zorilla (polecat)".



(CC) BY © Jeff Heath and the Dogon and Bangime Languages Project



CC-Zero ©



(CC) BY-NC-SA © Antonius El Kommos

***Mellivora capensis*** (Schreber, 1776) . Characteristics: omnivore; height: 25-30cm; the body is black with a broad, greyish-white saddle on the back and head;the legs are short and equipped with sharp claws; the black tail is short; the ears are very small;. Biotope: savanna, forest, grassland. ([Cillié 1997](#): 140)

- tíri:" . "ratel (honey badger)".



(CC) BY-SA ©



(CC) BY-SA © Matěj Batha



(CC) MARK © Creator:Joseph Smit

**Family: Viverridae**

***Genetta genetta*** (Linnaeus, 1758) . Characteristics: carnivore; this cat-like animal has a grey coat with black spots on it; the tail is very long and has grey and black rings, the tip is always white; the ears are very thin and rounded; each individual has a characteristic face mask;. Biotope: savanna, forest, scrubforest, grassland. ([Cillié 1997](#): 144)

- síyè . "genet".



(CC) BY © Jeff Heath and the Dogon and Bangime  
Languages Project



(CC) BY © Jeff Heath and the Dogon and Bangime  
Languages Project



(CC) BY-SA © Liné1

[\*Genetta thierryi\*](#) Matschie, 1902 .

- sîyè . "Hausa genet".



(CC) BY-SA ©



(CC) BY-SA © Rosevear, Donovan Reginald

**Order: Chiroptera**

**Family: Emballonuridae**

[\*Taphozous mauritanus\*](#) E. Geoffroy, 1818 . Characteristics: insectivore; body-length: 10-11cm, wing-span: 18-20cm; the dorsal pelage is grizzles grey, the ventral fur is characteristically white; the ears are large and triangular;. Biotope: savanna, forest, grassland, swamps. ([Cillié 1997](#): 208)

- sě:"sè . "tomb bat".



(CC) BY © Frank Vassen



(CC) BY-SA © Mimi Neumann



(CC) BY-NC © inaturalist

### Family: Nycteridae

***Nycteris thebaica*** E. Geoffroy, 1818 . Characteristics: carnivore; body-length: 8-16 cm, wing-span: 27-30 cm; long and silky fur; colour ranges from grey to red and brown; the underparts are greyish white; the ears are enormous; and the large nose leaf is split along the middle of the face;. Biotope: savanna, forest, grassland, woodland. ([Cillié 1997](#): 210)

- **šë:"sè** . "slit-faced bat".



(CC) BY © Susan Ellis, Bugwood.org



(CC) BY © Jeff Heath and the Dogon and Bangime Languages Project



(CC) BY-NC-SA © Description de l'Égypte, Book 34 (1826), Volume I - Planches : Histoire Naturelle.

### Family: Pteropodidae

***Eidolon helvum*** (Kerr, 1792) . Characteristics: herbivore; length: 19cm, wingspan: 75cm; dog-like face; yellowish fur with no obvious markings; black wings;. Biotope: savanna, rainforest, grassland. ([Stuart and Stuart 2007](#): 46)

- **éméndë** . "straw-colored fruit bat sp.".



(CC) BY © Jeff Heath and the Dogon and Bangime Languages Project



(CC) BY-NC © inaturalist

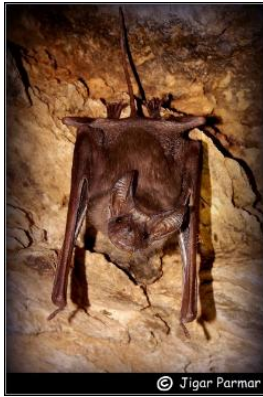


(CC) BY-NC © inaturalist

## Family: Rhinopomatidae

[\*Rhinopoma microphyllum\*](#) (Brünnich, 1782) .

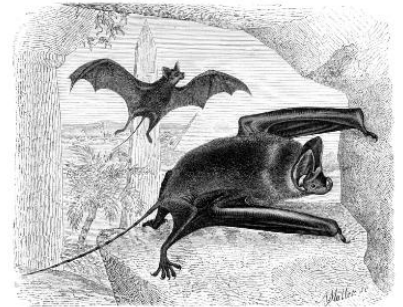
- **bòrémbòrè** . "mouse-tailed bat (insectivorous, crepuscular)".



(CC) BY-SA © Jigar Parmar



(CC) BY © Jeff Heath and the Dogon and Bangime Languages Project



Public Domain by

## Order: Erinaceomorpha

### Family: Erinaceidae

[\*Atelerix albiventris\*](#) (Wagner, 1841) .

- **gùmbé-ínjī** . "hedgehog".



(CC) BY © Jeff Heath and the Dogon and Bangime  
Languages Project



(CC) BY © Jeff Heath and the Dogon and Bangime  
Languages Project

**Order: Hyracoidea**

**Family: Procaviidae**

[\*Procavia capensis ruficeps\*](#) (Hemprich and Ehrenberg, 1832) .

- **kódé** . "rock hyrax, dassie, 3-4 kg".



(CC) BY © Jeff Heath and the Dogon and Bangime  
Languages Project

**Order: Lagomorpha**

**Family: Leporidae**

[\*Lepus capensis\*](#) Linnaeus, 1758 . Characteristics: herbivore; this typical hare has well developed hind legs for running and leaping; the ears as well as the eyes are large; the colour of the coat varies from light brown to reddish to sandy grey; the females are larger than the males;. Biotope: grassland, desert. ([Cillié 1997](#): 186)

- **jón** . "hare (all forms)".





(CC) BY-SA © benjamint



(CC) MARK © Creator:Joseph Smit



(CC) BY-SA © Haplochromis

**Order: Primates**

**Family: Cercopithecidae**

[Erythrocebus patas](#) (Schreber, 1774) .

- óndò . "patas monkey".



(CC) BY-SA ©



(CC) BY ©



(CC) BY-SA © Brocken Inaglory

[Papio anubis](#) (Lesson, 1827) .

- gúmbè . "baboon".



(CC) BY-NC-SA © Gerald and Buff Corsi



(CC) BY-NC-SA © Gerald and Buff Corsi



(CC) BY © Simon J. Tonge

**Order: Proboscidea**

**Family: Elephantidae**

[Loxodonta africana](#) (Blumenbach, 1797) . Characteristics: herbivore; height: 3-3,75m; the African Bush elephant has large flat ears; its trunk ends with two opposing extensions; both sexes have large tusks; females are smaller and have smaller tusks;. Biotope: savanna, marshland, forest, grassland, desert, swamps. ([Cillié 1997](#): 100)

- **índìgè** . "elephant".



(CC) BY-SA © nickandmel2006



Public Domain by Gorgo

**Order: Rodentia**

**Family: Hystricidae**

[Hystrix cristata](#) Linnaeus, 1758 .

- **kèrúmè** . "porcupine".



(CC) BY-SA ©



(CC) MARK © creator:Thomas Hardwicke



(CC) BY-NC-SA © David Bygott

**Family: Muridae**

[Acomys johannis](#) .

- **síyá kèrúmè** . "spiny-haired mouse sp.".



(CC) BY © Jeff Heath and the Dogon and Bangime Languages Project



(CC) BY © Jeff Heath and the Dogon and Bangime Languages Project

***Arvicanthis niloticus*** (Desmarest, 1822) .

- **búrgú síyà** . "unstriped grass rat (diurnal)".



(CC) BY © Jeff Heath and the Dogon and Bangime Languages Project



(CC) BY © Jeff Heath and the Dogon and Bangime Languages Project



(CC) BY © Jeff Heath and the Dogon and Bangime Languages Project

***Cricetomys gambianus*** Waterhouse, 1840 . Characteristics: omnivore; total length: 80 cm, tail-length: 40 cm; grey-brown fur on the back, belly lighter; long naked tail which is white towards the end; dark eye-ring; long thin ears;. Biotope: savanna, forest, grassland. ([Stuart and Stuart 2007](#): 108)

- **gújù** . "giant pouched rat (about 2 kilos)".



(CC) BY-SA ©



(CC) BY-SA ©



(CC) BY © Jeff Heath and the Dogon and Bangime Languages Project

***Mastomys natalensis*** (Smith, 1834) . Characteristics: herbivore; length: 24cm, tail-length: 11cm; underparts paler than upperparts, females have up to 12 pairs of nipples. Biotope: savanna, forest, shrubland, human settlement. ([Stuart and Stuart 2007](#): 126)

- **síyá kórò** . "black form of African soft-furred rat (house mouse)".



(CC) BY © Jeff Heath and the Dogon and Bangime Languages Project



(CC) BY ©



(CC) BY ©

***Myomys daltoni*** (Thomas, 1892) .

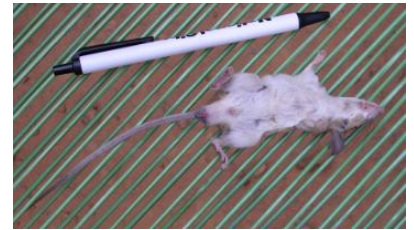
- **ágá síyà** . "Dalton's mouse (small, light-colored, belly white, tail longer than body, in field or houses, can climb)".



(CC) BY © Zbyszek Boratynski



(CC) BY © Jeff Heath and the Dogon and Bangime Languages Project



(CC) BY © Jeff Heath and the Dogon and Bangime Languages Project

**Family: Sciuridae**

***Heliosciurus gambianus*** (Ogilby, 1835) .

- **kòmé ñgàwà** . "Gambian sun squirrel (arboreal)".



(CC) BY © N3ddo!



(CC) BY © N3ddo!

**Order: Soricomorpha**

**Family: Soricidae**

[\*Crocidura cinderella\*](#) Thomas, 1911 .

- **síyá šù:**"šú:" . "tiny white-toothed shrew sp."



(CC) BY © Jeff Heath and the Dogon and Bangime

Languages Project

**Order: Tubulidentata**

**Family: Orycteropodidae**

[\*Orycteropus afer\*](#) (Pallas, 1766) . Characteristics: insectivore; height: 60 cm; this animal has a long pig-like snout, large, erect ears and a thick tail; most of the body is naked, only the legs are covered with dark hair; the forefeet have strong claws for digging; it has a long (30 cm), sticky tongue which allows it to catch termites and ants;. Biotope: savanna, grassland. ([Cillié 1997](#): 172)

- **ámándá** . "aardvark, 50 kg".



Public Domain by Christfried Naumann



(CC) BY-SA ©



(CC) BY-SA ©

**Class: Reptilia**

**Order: Crocodylia**

**Family: Crocodylidae**

[Crocodylus niloticus](#) Laurenti, 1768 .

- káná . "Nile crocodile".



(CC) BY-SA © MathKnight and Zachi Evenor



(CC) BY-SA © Marco Schmidt



(CC) BY-SA © Atamari

[Mecistops cataphractus](#) (Cuvier, 1825) .

- ñàtá . "long-snouted crocodile".



(CC) BY © Huc Marian



(CC) BY ©

**Order: Squamata**

**Family: Agamidae**

**[Agama boueti](#)** Chabanaud, 1917 .

- àgà kǒ:<sup>n</sup>-wè . "agama sp. with cross-markings".



(CC) BY © Jeff Heath and the Dogon and Bangime Languages Project



(CC) BY © Jeff Heath and the Dogon and Bangime Languages Project



(CC) BY © Jeff Heath and the Dogon and Bangime Languages Project

**[Agama sankaranica](#)** Chabanaud, 1918 .

- àgà kǒ:<sup>n</sup>-wè . "ground-dwelling agama lizard sp.".



(CC) BY © Jeff Heath and the Dogon and Bangime Languages Project



(CC) BY © Jeff Heath and the Dogon and Bangime Languages Project



(CC) BY © Jeff Heath and the Dogon and Bangime Languages Project

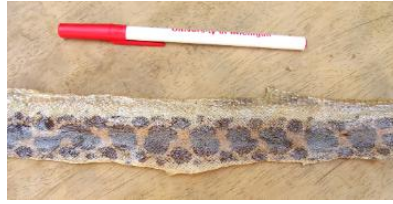
**Family: Boidae**

**[Gongylophis muelleri](#)** Angel, 1938 .

- ǹ:ngó té̀m̀ . "sand boa, thick-bodied venomous snake sp.".



(CC) BY © Jeff Heath and the Dogon and Bangime  
Languages Project



(CC) BY © Jeff Heath and the Dogon and Bangime  
Languages Project



(CC) BY © Jeff Heath and the Dogon and Bangime  
Languages Project

***Python sebae*** (Gmelin, 1789) .

- **nò:ngó dògò** . "rock python".



(CC) BY-SA © Joachim Huber



(CC) BY © Tigerpython



(CC) MARK © Sir Andrew Smith

**Family: Chamaeleonidae**

***Chamaeleo africanus*** Laurenti, 1768 .

- **ównáyá:rà** . "chameleon".



(CC) BY © Jeff Heath and the Dogon and Bangime  
Languages Project



(CC) BY © Jeff Heath and the Dogon and Bangime  
Languages Project



(CC) BY © Jeff Heath and the Dogon and Bangime  
Languages Project

**Family: Colubridae**



[Psammophis elegans](#) (Shaw, 1802) .

- **ǹ:ηǵ s̀r̀ánj̀** . "arboreal colubrid snake sp."



(CC) BY © Jeff Heath and the Dogon and Bangime  
Languages Project



(CC) BY © Jeff Heath and the Dogon and Bangime  
Languages Project



(CC) BY © Jeff Heath and the Dogon and Bangime  
Languages Project

[Psammophis sibilans](#) (Linnaeus, 1758) .

- **b́oỳè̀ s̀r̀á:nj̀** . "terrestrial colubrid snake sp."



(CC) BY © Jeff Heath and the Dogon and Bangime  
Languages Project



(CC) BY © Jeff Heath and the Dogon and Bangime  
Languages Project



(CC) BY-SA ©

**Family: Elapidae**

[Naja haje](#) (Linnaeus, 1758) .

- **d̀ěw k̀òr̀** . "Egyptian cobra".



Public Domain by John Walker, Head



(CC) BY © Jeff Heath and the Dogon and Bangime  
Languages Project



Public Domain by Ltshears

[\*Naja nigricollis\*](#) Reinhardt, 1843 .

- **děw kòrò** . "spitting cobra".



(CC) BY © Luca Boldrini



(CC) BY © Jeff Heath and the Dogon and Bangime Languages Project

**Family: Gekkonidae**

[\*Ptyodactylus ragazzii\*](#) Anderson, 1898 .

- **tògù-tógù** . "fan-footed house gecko".



(CC) BY © Jeff Heath and the Dogon and Bangime Languages Project



(CC) BY © Jeff Heath and the Dogon and Bangime Languages Project

[\*Tarentola ehippiata\*](#) O'shaughnessy, 1875 .

- **àgàrà-kágàjà** [Nando spcm 2011] . "arboreal gecko sp.".



(CC) BY-NC-SA © Thomas Brown



(CC) BY-NC-SA © Thomas Brown



(CC) BY © Jeff Heath and the Dogon and Bangime Languages Project

**Family: Scincidae**

[Chalcides ocellatus](#) (Forskål, 1775) .

- **gĩméri** . "spotted skink sp. (thick body, very short legs)".



(CC) BY © Jeff Heath and the Dogon and Bangime  
Languages Project

[Sphenops delislei](#) (Lataste & Rochebrune, 1876) .

- **òró-òró** . "subterranean skink sp. (short legs, loose sand near bushes)".

[Trachylepis perrotetii](#) (Duméril & Bibron, 1839) .

- **tó:rí** . "spotted skink sp. (relatively long legs)".



(CC) BY © liesvanrompaey



(CC) BY © Lies Van Rompae



(CC) BY © Jeff Heath and the Dogon and Bangime  
Languages Project

[Trachylepis quinquetaeniata](#) (Lichtenstein, 1823) .

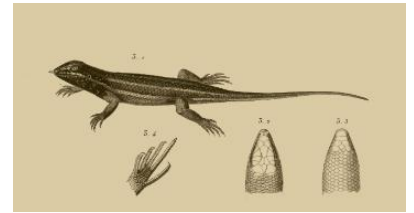
- **šě:ndĩ** . "five-lined skink".



(CC) BY-NC-SA © cultnat



(CC) BY © Jeff Heath and the Dogon and Bangime Languages Project



(CC) BY-NC-SA © Description de l'Égypte, Book 34 (1826), Volume I - Planches : Histoire Naturelle.

**Family: Varanidae**

[Varanus griseus](#) (Daudin, 1803) .

- úgúrù . "grey monitor lizard (very long tail, terrestrial)".



(CC) PUBLICDOMAIN © Omid Mozaffari



(CC) BY-NC-SA © cultnat



(CC) BY-NC-SA © Description de l'Égypte, Book 34 (1826), Volume I - Planches : Histoire Naturelle.

[Varanus niloticus](#) (Linnaeus, 1766) .

- âw<sup>n</sup> . "Nile monitor lizard (climbs trees near water)".



(CC) BY © Simon J. Tonge



Public Domain by Alexis Naumann



(CC) BY-NC-SA © Description de l'Égypte, Book 34 (1826), Volume I - Planches : Histoire Naturelle.

**Family: Viperidae**

[Bitis arietans](#) (Merrem, 1820) .

- wàjǎ-górò . "puff adder".



(CC) BY-NC-SA © Gerald and Buff Corsi



Public Domain by Alexis Naumann



Public Domain by Alexis Naumann

## Order: Testudines

### Family: Pelomedusidae

[Pelomedusa subrufa](#) (Bonnaterre, 1789) .

- tángábájí . "small aquatic tortoise (rainy season)".



(CC) BY-SA © Ltshears



(CC) BY © Jeff Heath and the Dogon and Bangime  
Languages Project



(CC) BY © Jeff Heath and the Dogon and Bangime  
Languages Project

### Family: Testudinidae

[Geochelone sulcata](#) (Miller, 1779) .

- gû:ⁿ . "giant tortoise (terrestrial)".



(CC) BY © Jeff Heath and the Dogon and Bangime Languages Project



(CC) BY © Jeff Heath and the Dogon and Bangime Languages Project



(CC) BY © Jeff Heath and the Dogon and Bangime Languages Project

**Class: Sarcopterygii**

**Order: Lepidosireniformes**

**Family: Protopteryidae**

[Protopterus annectens](#) (Owen, 1839) .

- éndò . "African lungfish".



(CC) BY ©



(CC) BY-SA ©



(CC) MARK © G.H.Ford

**Class: other**

**Order: Bucerotiformes**

**Family: Bucerotidae**

[Tockus sp.](#) .

- gòdí . "hornbill spp. (grey and red-billed)".

**Kingdom: Fungi**

**Phylum: Basidiomycota**

**Class: Agaricomycetes**

**Order: Agaricales**

**Family: Agaricaceae**

[Podaxis pistillaris](#) (L.) Fr. 1829 .

- **tù:ré-pùjè** . "puffball".



(CC) BY © Jeff Heath and the Dogon and Bangime Languages Project



(CC) BY © Jeff Heath and the Dogon and Bangime Languages Project



(CC) BY-NC-SA © Douglas Smith

**Kingdom: Metazoa**

**Phylum: Arthropoda**

**Class: Arachnida**

**Order: Scorpiones**

**Family: Buthidae**

[Androctonus amoreuxi](#) .

- **nǒ:ndò** . "fat-tailed scorpion".
- **ègó nóndò** . "baby fat-tailed scorpion".



(CC) BY © Jeff Heath and the Dogon and Bangime Languages Project



(CC) BY © Jeff Heath and the Dogon and Bangime Languages Project



(CC) BY © Jeff Heath and the Dogon and Bangime Languages Project

**Family: Scorpionidae**

[Pandinus imperator](#) .

- nóndó-kórò . "black emperor scorpion".

**Class: Insecta**

**Order: Lepidoptera**

**Family: Noctuidae**

[Heliocheilus albipunctella](#) .

- sĩ: búndè . "millet head-miner (caterpillar in millet grain spike)".

**Phylum: Chordata**

**Class: Reptilia**

**Order: Squamata**

**Family: Colubridae**

[Bamanophis dorri](#) (Lataste, 1888) .

- má nǎ:ηgè . "colubrid snake sp.".





(CC) BY © Jeff Heath and the Dogon and Bangime  
Languages Project



(CC) BY © Jeff Heath and the Dogon and Bangime  
Languages Project



(CC) BY © Jeff Heath and the Dogon and Bangime  
Languages Project

**Kingdom: Plantae**

**Phylum: Magnoliophyta**

**Class: Liliopsida**

**Order: Commelinales**

**Family: Commelinaceae**

**[Commelina forskalaei](#) .**

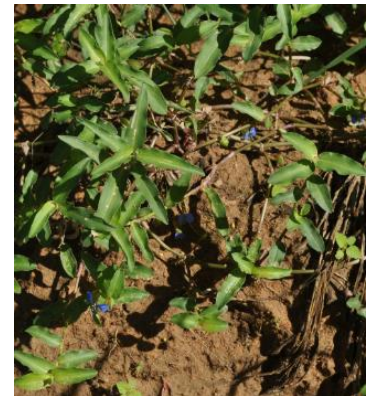
- pèràríyà . "herb sp."



(CC) BY © Jeff Heath and the Dogon and Bangime  
Languages Project



(CC) BY © Jeff Heath and the Dogon and Bangime  
Languages Project



(CC) BY © Jeff Heath and the Dogon and Bangime  
Languages Project

**Order: Poales**

**Family: Poaceae**

**[Digitaria ciliaris var. ciliaris](#) .**

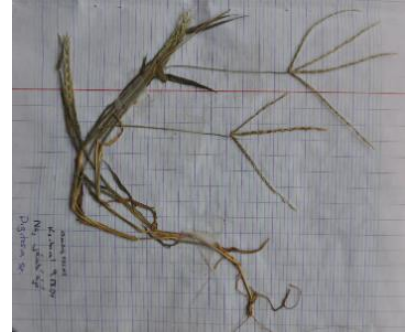
- púndá yògè sàjèrè . "grass sp."



(CC) BY © Jeff Heath and the Dogon and Bangime Languages Project



(CC) BY © Jeff Heath and the Dogon and Bangime Languages Project



(CC) BY © Jeff Heath and the Dogon and Bangime Languages Project

**Class: Magnoliopsida**

**Order: Brassicales**

**Family: Capparaceae**

**[Crataeva adansonii subsp. odora](#)**

- **tógò** . "tree sp."



(CC) BY © Jeff Heath and the Dogon and Bangime Languages Project



(CC) BY © Jeff Heath and the Dogon and Bangime Languages Project



(CC) BY © Jeff Heath and the Dogon and Bangime Languages Project

**Order: Cucurbitales**

**Family: Cucurbitaceae**

**[Cucumis melo subsp. agrestis var. agrestis Naudin](#)**

- **pàkòsí tètè** . "wild melon sp."



(CC) BY © Jeff Heath and the Dogon and Bangime  
Languages Project



(CC) BY © Jeff Heath and the Dogon and Bangime  
Languages Project



(CC) BY © Jeff Heath and the Dogon and Bangime  
Languages Project

**Order: Lamiales**

**Family: Acanthaceae**

**[Blepharis linariifolia](#) .**

- bàràamá jémbéré . "medicinal herb sp.".



(CC) BY © Jeff Heath and the Dogon and Bangime  
Languages Project



(CC) BY © Jeff Heath and the Dogon and Bangime  
Languages Project



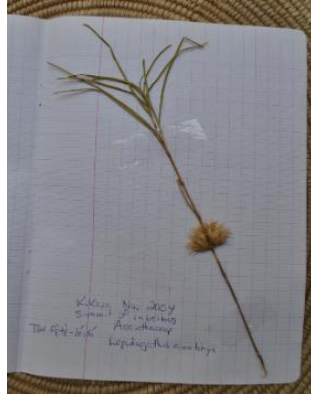
(CC) BY © Jeff Heath and the Dogon and Bangime  
Languages Project

**[Lepidagathis anobrya](#) Nees .**

- bònghè-bónghè . "herb sp.".



(CC) BY-NC-SA © Research Institute Senckenberg



(CC) BY © Jeff Heath and the Dogon and Bangime

Languages Project



(CC) BY © Jeff Heath and the Dogon and Bangime

Languages Project

## Family: Lamiaceae

[Endostemon tereticaulis](#) (Poir.) M.R.Ashby .

- **gǐdó-pàgàrà** . "herb sp."



(CC) BY © Jeff Heath and the Dogon and Bangime

Languages Project



(CC) BY-NC © Bart Wursten



(CC) BY-NC © Bart Wursten

[Vitex madiensis subsp. madiensis Oliv.](#) .

- **mòrá kǐjǐ** . "tree sp."



(CC) BY © Jeff Heath and the Dogon and Bangime Languages Project



(CC) BY © Jeff Heath and the Dogon and Bangime Languages Project



(CC) BY © Jeff Heath and the Dogon and Bangime Languages Project

**Order: Laurales**

**Family: Hernandiaceae**

[Gyrocarpus americanus subsp. pinnatilobus](#) .

- pòróm pòrè . "tree sp."

**Order: Malvales**

**Family: Malvaceae**

[Bombax costatum](#) Pellegrin & Vuillet .

- tógóró . "tree sp."



(CC) BY © Jeff Heath and the Dogon and Bangime Languages Project



(CC) BY © Jeff Heath and the Dogon and Bangime Languages Project

[Cienfuegosia digitata](#) Cav. .

- póníyá kǝjúwè . "prostrate herb sp."



(CC) BY © Jeff Heath and the Dogon and Bangime Languages Project



(CC) BY © Jeff Heath and the Dogon and Bangime Languages Project



(CC) BY © Jeff Heath and the Dogon and Bangime Languages Project

**[Grewia tenax \(Forsk.\) Fiori](#)** .

- òwá pù . "shrub sp."



(CC) BY © Jeff Heath and the Dogon and Bangime Languages Project



(CC) BY © Jeff Heath and the Dogon and Bangime Languages Project



(CC) BY © Jeff Heath and the Dogon and Bangime Languages Project

**Order: Myrtales**

**Family: Combretaceae**

**[Terminalia avicennioides](#)** Guill. & Perr. .

- kógò . "tree sp."



(CC) BY © Jeff Heath and the Dogon and Bangime Languages Project



(CC) BY © Jeff Heath and the Dogon and Bangime Languages Project



(CC) BY © Jeff Heath and the Dogon and Bangime Languages Project

**Order: Rosales**

**Family: Cannabaceae**

[Celtis toka](#) (Forssk.) F.N. Hepper & J.R.I. Wood .

- **ṗírí** . "tree sp."



(CC) BY © Jeff Heath and the Dogon and Bangime Languages Project



(CC) BY © Jeff Heath and the Dogon and Bangime Languages Project



(CC) BY-NC-SA © Marco Schmidt

**Family: Moraceae**

[Ficus cordata subsp. lecardii C.C. Berg](#) .

- **w<sup>n</sup>éw<sup>n</sup>é** . "fig tree sp."



(CC) BY © Jeff Heath and the Dogon and Bangime Languages Project



(CC) BY © Jeff Heath and the Dogon and Bangime Languages Project



(CC) BY © Jeff Heath and the Dogon and Bangime Languages Project

**Order: Sapindales**

**Family: Anacardiaceae**

[Lannea microcarpa](#) Engl. & K. Krause .

- **sánà** . "wild grape ree".



(CC) BY-NC-SA © Research Institute Senckenberg



(CC) BY © Jeff Heath and the Dogon and Bangime Languages Project



(CC) BY © Jeff Heath and the Dogon and Bangime Languages Project

**Order: Solanales**

**Family: Convolvulaceae**

[Ipomoea vagans](#) Baker .

- pànù-má-pànù . "trailing vine sp."



(CC) BY © Jeff Heath and the Dogon and Bangime Languages Project



(CC) BY © Jeff Heath and the Dogon and Bangime Languages Project



(CC) BY © Jeff Heath and the Dogon and Bangime Languages Project

**Phylum: Tracheophyta**

**Class: Liliopsida**

**Order: Alismatales**

**Family: Araceae**

[Amorphophallus aphyllus](#) (Hook.) Hutch. .

- kànù màrà: sáyé . "herb sp."





(CC) BY © Jeff Heath and the Dogon and Bangime Languages Project



(CC) BY © Jeff Heath and the Dogon and Bangime Languages Project



(CC) BY © Jeff Heath and the Dogon and Bangime Languages Project

[Amorphophallus baumannii](#) (Engl.) N.E.Br. .

- kànú sǎyyè . "tiger lily, herb sp."



(CC) BY © Jeff Heath and the Dogon and Bangime Languages Project



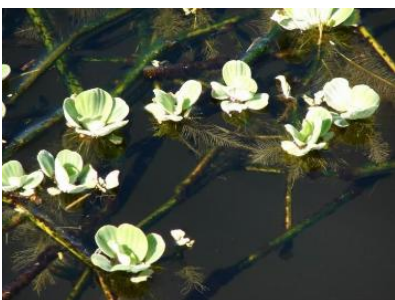
(CC) BY © Jeff Heath and the Dogon and Bangime Languages Project



(CC) BY © Jeff Heath and the Dogon and Bangime Languages Project

[Pistia stratiotes](#) L. .

- sámbà . "water lettuce".



(CC) BY © Forest & Kim Starr



(CC) BY © Forest & Kim Starr



(CC) BY-NC © Bart Wursten

Order: Arecales

Family: Arecaceae

**[Borassus aethiopum](#)** Mart. .

- **síw<sup>n</sup>** . "palm sp."



(CC) BY © Jeff Heath and the Dogon and Bangime  
Languages Project



(CC) BY © Jeff Heath and the Dogon and Bangime  
Languages Project



(CC) BY © Jeff Heath and the Dogon and Bangime  
Languages Project

**[Hyphaene thebaica](#)** (L.) Mart. .

- **kǎ:nǐ** . "doug palm"



(CC) BY © Jeff Heath and the Dogon and Bangime  
Languages Project



(CC) BY-NC-SA © Bibliotheca Alexandrina - EOL Ar



(CC) BY © Jeff Heath and the Dogon and Bangime  
Languages Project

**[Phoenix dactylifera](#)** L. .

- **támárò** . "date palm"



(CC) MARK © Mmcknight4



(CC) BY-SA ©



(CC) BY-SA © Nevit Dilmen

**Order: Asparagales**

**Family: Amaryllidaceae**

[Allium cepa](#) L. .

- kàmiy<sup>n</sup>ɛ̃ . "onion".



(CC) BY-SA © Rainer Haessner



(CC) BY-SA © Donovan Govan



(CC) BY-SA © Christoph Waghubinger

[Allium sativum](#) L. .

- kàmiy<sup>n</sup>ɛ̃ nàrà . "garlic".



(CC) BY-SA © H. Zell



(CC) BY-SA © Donovan Govan



(CC) BY-SA © Francesco Perito

**[Pancratium trianthum](#)** Herb. .

- **kùmàní èntiyè** . "wild onion sp."



(CC) BY © Jeff Heath and the Dogon and Bangime Languages Project



(CC) BY © Jeff Heath and the Dogon and Bangime Languages Project



(CC) BY © Jeff Heath and the Dogon and Bangime Languages Project

**Family: Asparagaceae**

**[Dipcadi viride](#)** (L.) Moench .

- **kùmàní pó:ndiyò** . "herb sp."



(CC) BY © Jeff Heath and the Dogon and Bangime Languages Project



(CC) BY © Jeff Heath and the Dogon and Bangime Languages Project



(CC) BY © Jeff Heath and the Dogon and Bangime Languages Project

**Family: Xanthorrhoeaceae**

**[Aloe tenuifolia](#)** .

- ìjé-kèndà . "small aloe sp."



(CC) BY © Jeff Heath and the Dogon and Bangime  
Languages Project



(CC) BY © Jeff Heath and the Dogon and Bangime  
Languages Project



(CC) BY © Jeff Heath and the Dogon and Bangime  
Languages Project

**Order: Commelinales**

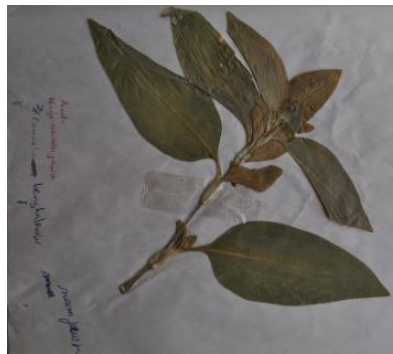
**Family: Commelinaceae**

**[Commelina benghalensis benghalensis](#)** .

- pèràriyà . "herb sp."



(CC) BY © Jeff Heath and the Dogon and Bangime  
Languages Project



(CC) BY © Jeff Heath and the Dogon and Bangime  
Languages Project



(CC) BY © Jeff Heath and the Dogon and Bangime  
Languages Project

**[Cyanotis lanata](#)** Benth. .

- tàwá dèrè kójí . "herb sp."



(CC) BY © Jeff Heath and the Dogon and Bangime Languages Project



(CC) BY © Jeff Heath and the Dogon and Bangime Languages Project



(CC) BY © Jeff Heath and the Dogon and Bangime Languages Project

**Order: Dioscoreales**

**Family: Dioscoreaceae**

**[Dioscorea alata](#)** L. .

- kâ:<sup>n</sup> . "yam".



(CC) BY ©



(CC) BY-SA ©



(CC) BY © Forest & Kim Starr

**Order: Liliales**

**Family: Colchicaceae**

**[Gloriosa superba](#)** L. .

- sùgùrú ká:nú . "herb sp.".



(CC) BY-NC © Bart Wursten



(CC) BY-NC © Bart Wursten



(CC) BY © Jeff Heath and the Dogon and Bangime  
Languages Project

**Order: Poales**

**Family: Cyperaceae**

**[Cyperus articulatus](#) L. .**

- gwé . "sedge sp."



(CC) BY © Jeff Heath and the Dogon and Bangime  
Languages Project



(CC) BY © Jeff Heath and the Dogon and Bangime  
Languages Project



(CC) BY © Jeff Heath and the Dogon and Bangime  
Languages Project

**[Cyperus esculentus](#) L. .**

- gwé . "sedge sp."



(CC) BY © Jeff Heath and the Dogon and Bangime  
Languages Project



(CC) BY © Jeff Heath and the Dogon and Bangime  
Languages Project



(CC) MARK © USDA NRCS PLANTS Database

[Cyperus rotundus](#) L. .

- gwé nàrà . "sedge sp."



(CC) BY © Jeff Heath and the Dogon and Bangime Languages Project



(CC) BY © Jeff Heath and the Dogon and Bangime Languages Project



(CC) BY © Jeff Heath and the Dogon and Bangime Languages Project

[Cyperus squarrosus](#) L. .

- gwé . "sedge sp."



(CC) BY © Jeff Heath and the Dogon and Bangime Languages Project



(CC) BY © Jeff Heath and the Dogon and Bangime Languages Project



(CC) BY © Jeff Heath and the Dogon and Bangime Languages Project

[Pycnus macrostachyos](#) (Lam.) J.Raynal .

- gwé . "sedge sp."

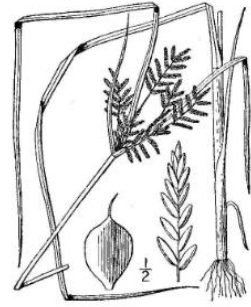




(CC) BY © Jeff Heath and the Dogon and Bangime  
Languages Project



(CC) BY © Jeff Heath and the Dogon and Bangime  
Languages Project



(CC) MARK © USDA NRCS PLANTS Database

## Family: Poaceae

### [Andropogon gayanus bisquamulatus](#) .

- **dũ**-"kòrò" . "tall grass sp."



(CC) BY © Jeff Heath and the Dogon and Bangime  
Languages Project



(CC) BY © Jeff Heath and the Dogon and Bangime  
Languages Project



(CC) BY © Jeff Heath and the Dogon and Bangime  
Languages Project

[Aristida adscensionis](#) L. . Characteristics: tufted, annual grass, 80cm tall, the nodes and parts of the inflorescence are purple, the inflorescence is a compact panicle with three-awned spikelets. Biotope: dry river course. ([Van Rooyen et al. 2001](#): 88)

- **émbéré kè**m . "grass sp."
- **kòji-yùrè-ʔyùrè** . "grass sp."



(CC) BY © Jeff Heath and the Dogon and Bangime Languages Project



(CC) BY © Jeff Heath and the Dogon and Bangime Languages Project



(CC) BY © Jeff Heath and the Dogon and Bangime Languages Project

**Brachiaria** .

- **dàw"à nárà èmbà** . "grass sp."



(CC) BY © Forest & Kim Starr



(CC) BY © Forest & Kim Starr



(CC) BY-NC © Bart Wursten

**Cenchrus biflorus** Roxb. .

- **kórumbó** . "burrgrass".



(CC) BY © Jeff Heath and the Dogon and Bangime Languages Project



(CC) BY © Jeff Heath and the Dogon and Bangime Languages Project



(CC) BY © Jeff Heath and the Dogon and Bangime Languages Project

[Cenchrus prieurii](#) (Kunth) Maire .

- **kórumbó yò** . "grass similar to burrgrass".



(CC) BY © Jeff Heath and the Dogon and Bangime Languages Project



(CC) BY © Jeff Heath and the Dogon and Bangime Languages Project



(CC) BY © Jeff Heath and the Dogon and Bangime Languages Project

[Chloris pilosa](#) Schumach. .

- **nàríyà** . "grass sp.".



(CC) BY © Jeff Heath and the Dogon and Bangime Languages Project



(CC) BY © Jeff Heath and the Dogon and Bangime Languages Project



(CC) BY © Jeff Heath and the Dogon and Bangime Languages Project

[Chrysopogon nigritanus](#) (Benth.) Veldkamp .

- **wòmbò-jé:nĩ** . "tall, clumpy grass sp.".



(CC) BY © Jeff Heath and the Dogon and Bangime Languages Project



(CC) BY © Jeff Heath and the Dogon and Bangime Languages Project



(CC) BY © Jeff Heath and the Dogon and Bangime Languages Project

[Cymbopogon caesius giganteus](#) .

- **dû:** . "giant lemon grass sp."



(CC) BY © Jeff Heath and the Dogon and Bangime  
Languages Project



(CC) BY © Jeff Heath and the Dogon and Bangime  
Languages Project



(CC) BY © Jeff Heath and the Dogon and Bangime  
Languages Project

[Cymbopogon schoenanthus](#) (L.) Spreng. .

- **kòji nàríyè** . "lemon grass sp."



(CC) BY © Jeff Heath and the Dogon and Bangime  
Languages Project



(CC) MARK © Jose Hernandez



(CC) BY-NC © Edinburgh!

[Dactyloctenium aegyptium](#) (L.) Willd. .

- **nàríyà** . "grass sp."



(CC) BY © Jeff Heath and the Dogon and Bangime Languages Project



(CC) BY © Jeff Heath and the Dogon and Bangime Languages Project



(CC) BY © Jeff Heath and the Dogon and Bangime Languages Project

*Digitaria exilis* (Kippist) Stapf .

- pô:n . "fonio (grain)".



(CC) BY ©



PD USDA ARS ©



PD USAID ©

*Diheteropogon hagerupii* Hitchc. .

- òndògé-sú:jè . "grass sp.". Lit. "monkey-bow".



(CC) BY © Jeff Heath and the Dogon and Bangime Languages Project



(CC) BY © Jeff Heath and the Dogon and Bangime Languages Project



(CC) BY © Jeff Heath and the Dogon and Bangime Languages Project

*Echinochloa colona* (L.) Link .

- sà:ndá kòjùwè . "grass sp.". Lit. "Sesbania herb".



(CC) BY © Jeff Heath and the Dogon and Bangime  
Languages Project



(CC) BY © Jeff Heath and the Dogon and Bangime  
Languages Project



(CC) BY © Jeff Heath and the Dogon and Bangime  
Languages Project

[Eleusine indica](#) (L.) Gaertn. .

- **dèbitá-pùtà** . "grass sp."



(CC) BY © Jeff Heath and the Dogon and Bangime  
Languages Project



(CC) BY-SA © Tau'olunga



(CC) BY © Jeff Heath and the Dogon and Bangime  
Languages Project

[Enteropogon prieurii](#) (Kunth) Clayton .

- **jè:ní nàrà** . "grass sp.". Lit. "broom male".



(CC) BY © Jeff Heath and the Dogon and Bangime  
Languages Project



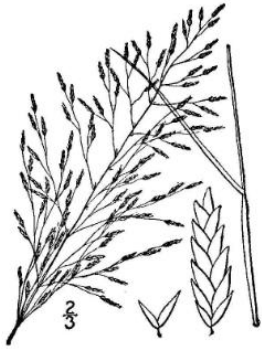
(CC) BY © Jeff Heath and the Dogon and Bangime  
Languages Project



(CC) BY © Jeff Heath and the Dogon and Bangime  
Languages Project

[Eragrostis pilosa](#) (L.) P.Beauv. .

- dú:nù-kó . "grass sp."



(CC) MARK © USDA NRCS PLANTS Database



(CC) MARK © Tracey Slotta



(CC) BY © Jeff Heath and the Dogon and Bangime  
Languages Project

[Eragrostis tremula](#) Hochst. ex Steud. .

- ìjò-ìjò . "grass sp."



(CC) BY © Jeff Heath and the Dogon and Bangime  
Languages Project



(CC) BY © Jeff Heath and the Dogon and Bangime  
Languages Project



(CC) BY © Jeff Heath and the Dogon and Bangime  
Languages Project

[Oryza](#) .

- kùmàní èdè . "wild rice".



(CC) BY-SA ©



(CC) BY-SA ©



(CC) MARK © Dr. David Gealy, USDA ARS, Research  
Plant Physiologist

[Oryza sativa](#) L. .

- **édé** . "rice".



(CC) BY-SA ©



(CC) BY-SA © Wikimedia Commons



(CC) BY-SA © Judgefloro

[Oxytenanthera abyssinica](#) (A.Rich.) Munro .

- **gĩ:ⁿ** . "bamboo".



(CC) BY-NC-SA © Research Institute Senckenberg



(CC) BY-NC-SA © Research Institute Senckenberg



(CC) BY © Jeff Heath and the Dogon and Bangime Languages Project

[Panicum laetum](#) Kunth .

- **tèwèré èmbà** . "wild fonio (grass)".





(CC) BY © Jeff Heath and the Dogon and Bangime Languages Project



(CC) BY-NC-SA © Missouri BG!



(CC) BY © Jeff Heath and the Dogon and Bangime Languages Project

[Panicum subalbidum](#) Kunth .

- **tèwèrè èmbà** . "tall grass sp."



(CC) BY © Jeff Heath and the Dogon and Bangime Languages Project



(CC) BY © Jeff Heath and the Dogon and Bangime Languages Project



(CC) BY © Jeff Heath and the Dogon and Bangime Languages Project

[Paspalum scrobiculatum](#) L. .

- **k̀j̀ì t̀m̀á̀-è̀** . "grass sp.". Lit. "herb-stick".



(CC) BY © David Eickhoff



(CC) BY © Jeff Heath and the Dogon and Bangime Languages Project



(CC) BY © David Eickhoff

[Pennisetum glaucum](#) (L.) R.Br. .

- **sêy** . "millet (pearl millet)".



(CC) BY-NC-SA © Research Institute Senckenberg



(CC) BY-NC-SA © Research Institute Senckenberg



(CC) BY-NC-SA © Delile, A.R., 1813. Description de l'Égypte

[Pennisetum pedicellatum](#) Trin. .

- **bórè** . "grass sp.".



(CC) BY-NC-SA © Research Institute Senckenberg



(CC) BY © Jeff Heath and the Dogon and Bangime Languages Project



(CC) BY © Jeff Heath and the Dogon and Bangime Languages Project

[Pennisetum polystachion](#) (L.) Schult. .

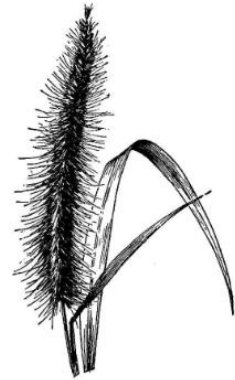
- **[òndò-gé] -dùrò** . "grass sp.".



(CC) BY © Jeff Heath and the Dogon and Bangime  
Languages Project



(CC) BY © Jeff Heath and the Dogon and Bangime  
Languages Project



(CC) MARK © USDA NRCS PLANTS Database

***Rottboellia cochinchinensis*** (Lour.) Clayton .

- **dàjà-nàrá èmbà** . "tall grass sp." . Lit. "Danga.village-man-sorghum" .



(CC) BY © Jeff Heath and the Dogon and Bangime  
Languages Project



(CC) BY-NC © Bart Wursten



(CC) BY © Jeff Heath and the Dogon and Bangime  
Languages Project

***Saccharum officinarum*** L. .

- **sìkòrò gèrúmbè** . "sugar cane" .



(CC) BY © Forest & Kim Starr



(CC) BY © Forest & Kim Starr



(CC) BY-SA © B.navez

***Schoenefeldia gracilis*** Kunth .

- **jé:nĩ** . "grass sp.". Lit. "broom".



(CC) BY-NC-SA © Research Institute Senckenberg



(CC) BY-NC-SA © Research Institute Senckenberg



(CC) BY © Jeff Heath and the Dogon and Bangime Languages Project

***Setaria pumila*** (L.f.) Roem. & Schult. .

- **[òndò-gé]-dùrò** . "grass sp.".



(CC) BY © Jeff Heath and the Dogon and Bangime Languages Project



(CC) PUBLICDOMAIN © Pavel Šinkyřk



(CC) MARK © USDA NRCS PLANTS Database

***Sorghum arundinaceum*** (Desv.) Stapf .

- **èmbá sà:rò** . "grass sp.".



(CC) BY-NC © Petra Ballings



(CC) BY-NC © Petra Ballings



(CC) BY © Jeff Heath and the Dogon and Bangime Languages Project

***Sorghum bicolor*** (L.) Moench .

- émbà . "sorghum (sweet)".
- gèrúmbè . "sorghum (sweet)".



(CC) BY-SA ©



(CC) BY-NC © Marco Schmidt



(CC) BY-NC © Marco Schmidt

***Sporobolus festinus*** Hochst. ex A.Rich. .

- dú:nù-kó . "grass sp.".



(CC) BY-NC © Sune Holt



(CC) BY-NC © Sune Holt



(CC) BY-NC © Sune Holt

*Triticum aestivum* L. .

- árkámá . "wheat".



(CC) BY © Dag Terje Filip Endresen



(CC) BY-SA ©



(CC) BY-SA ©

*Zea mays* L. .

- ġrímá yè . "corn (maize)".



(CC) BY-SA ©



(CC) BY ©



(CC) BY-SA ©

**Order: Zingiberales**

**Family: Zingiberaceae**

*Zingiber officinale* Roscoe .

- ñàmà-kú: . "ginger".



(CC) BY © Jeff Heath and the Dogon and Bangime Languages Project



(CC) BY ©



Public Domain by

**Class: Magnoliopsida**

**Order: Apiales**

**Family: Apiaceae**

**[Ammodaucus leucotrichus](#)** Coss. .

- tùdùgú . "spice sp."



(CC) BY-SA ©

**Order: Asterales**

**Family: Asteraceae**

**[Acanthospermum hispidum](#)** .

- ná:-kòjùwè . "prickly herb sp.". Lit. "cow-herb".



(CC) BY © Jeff Heath and the Dogon and Bangime Languages Project



(CC) BY © Jeff Heath and the Dogon and Bangime Languages Project

[Bidens biternata](#) .

- **embèrè-kêm** . "herb sp."



(CC) BY © Jeff Heath and the Dogon and Bangime Languages Project



(CC) BY © Jeff Heath and the Dogon and Bangime Languages Project

[Blainvillea gayana](#) .

- **kàjì tùmá-è** . "herb sp." . Lit. "herb-stick".





(CC) BY © Jeff Heath and the Dogon and Bangime  
Languages Project



(CC) BY © Jeff Heath and the Dogon and Bangime  
Languages Project



(CC) BY © Jeff Heath and the Dogon and Bangime  
Languages Project

[Centaurea perrottetii](#) .

- **méné-méné** . "herb sp."



(CC) BY © Jeff Heath and the Dogon and Bangime  
Languages Project



(CC) BY © Jeff Heath and the Dogon and Bangime  
Languages Project



(CC) BY © Jeff Heath and the Dogon and Bangime  
Languages Project

**Order: Brassicales**

**Family: Capparaceae**

[Boscia senegalensis](#) Lam. .

- **ándé** . "shrub sp."



(CC) BY © Jeff Heath and the Dogon and Bangime Languages Project



(CC) BY © Jeff Heath and the Dogon and Bangime Languages Project



(CC) BY © Jeff Heath and the Dogon and Bangime Languages Project

## Family: Cleomaceae

### [Arivela viscosa](#) .

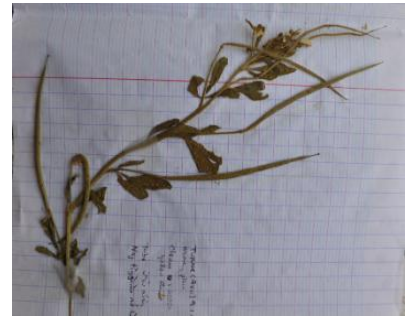
- **dà:mà-gínjì yò** . "herb sp.". Lit. "... female".



(CC) BY © Jeff Heath and the Dogon and Bangime Languages Project



(CC) BY © Jeff Heath and the Dogon and Bangime Languages Project



(CC) BY © Jeff Heath and the Dogon and Bangime Languages Project

[Gynandropsis gynandra](#) L. . Characteristics: annual herb; palmately compound leaves; white flowers; fruit is an elongated capsule on a long stalk. Biotope: dry river course, mountains. ([Van Rooyen et al. 2001](#): 164; [Burke 2007](#): 80)

- **dá:mà-gínjì** . "herb sp.".



(CC) BY © Jeff Heath and the Dogon and Bangime  
Languages Project



(CC) BY © Forest & Kim Starr

**Family: Moringaceae**

[Moringa oleifera](#) Lam. .

- làsirí tɨŋgòyè . "tree sp."



(CC) BY © Jeff Heath and the Dogon and Bangime  
Languages Project



(CC) BY © Forest & Kim Starr



(CC) BY © Jeff Heath and the Dogon and Bangime  
Languages Project

**Order: Caryophyllales**

**Family: Amaranthaceae**

[Achyranthes aspera sicula](#) .

- yàgádá nàrà . "herb sp."
- yàgádà . "herb sp."



(CC) BY © Jeff Heath and the Dogon and Bangime  
Languages Project



(CC) BY © Jeff Heath and the Dogon and Bangime  
Languages Project



(CC) BY © Jeff Heath and the Dogon and Bangime  
Languages Project

[Amaranthus viridis](#) L. .

- bè:-gé dwàmbè . "herb sp.". Lit. "child pestle".



(CC) BY © Jeff Heath and the Dogon and Bangime  
Languages Project



(CC) BY © Jeff Heath and the Dogon and Bangime  
Languages Project



(CC) BY © Jeff Heath and the Dogon and Bangime  
Languages Project

**Family: Portulacaceae**

[Portulaca oleracea](#) L. .

- t̀g̀ù-t̀g̀ú ǹm̀à . "purslane (weed)".



(CC) BY © Jeff Heath and the Dogon and Bangime  
Languages Project



(CC) BY © Forest & Kim Starr



(CC) BY © Jeff Heath and the Dogon and Bangime  
Languages Project

## Order: Cucurbitales

### Family: Cucurbitaceae

[\*Citrullus lanatus\*](#) (Thunb.) Matsumura & Nakai . Characteristics: annual, creeping herb; the hairy leaves are divided into 3-5 lobes; male and female flowers grow on the same plant and are yellow; the fruit is round with a diameter of 15-20 cm and a yellow and green surface. Biotope: sandy soil, dune. ([Van der Walt and le Riche 1999](#): 110; [Van Rooyen et al. 2001](#): 148)

- **tèw<sup>n</sup>ɔ́ bɔ́:mbè** . "watermelon (cultivated, eaten raw)".
- **téw<sup>n</sup>ɔ́** . "watermelon variety (cooked as a vegetable)".
- **téw<sup>n</sup>ɔ́** . "watermelon (cultivated, all forms)".



(CC) BY © Jeff Heath and the Dogon and Bangime  
Languages Project



Public Domain by Christfried Naumann

[\*Cucurbita\*](#) Vanhöffen, 1914 .

- **gámbò** . "squash".



PD ©



(CC) BY-SA ©



(CC) BY-SA © Michal Mañas

**[Lagenaria siceraria](#)** (Molina) Standl. .

- **kwé** . "gourd (calabash) plant".



(CC) BY © Jeff Heath and the Dogon and Bangime Languages Project



(CC) BY © Forest & Kim Starr



(CC) BY © Forest & Kim Starr

**Order: Ericales**

**Family: Ebenaceae**

**[Diospyros mespiliformis](#)** Hochst. ex A.DC. .

- **kùmà-ní:wè** . "tree sp".



(CC) BY © Jeff Heath and the Dogon and Bangime Languages Project



(CC) BY © Jeff Heath and the Dogon and Bangime Languages Project



(CC) BY © Jeff Heath and the Dogon and Bangime Languages Project

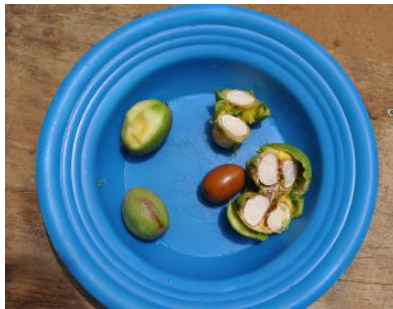
## Family: Sapotaceae

### [Vitellaria paradoxa paradoxa](#) .

- éré . "karité (tree)".



(CC) BY © Jeff Heath and the Dogon and Bangime Languages Project



(CC) BY © Jeff Heath and the Dogon and Bangime Languages Project



(CC) BY © Jeff Heath and the Dogon and Bangime Languages Project

## Order: Fabales

## Family: Fabaceae

### [Abrus precatorius](#) L. .

- sà:<sup>n</sup>-píyó<sup>n</sup>-píyó<sup>n</sup> . "herb with hard red-and-black berries".



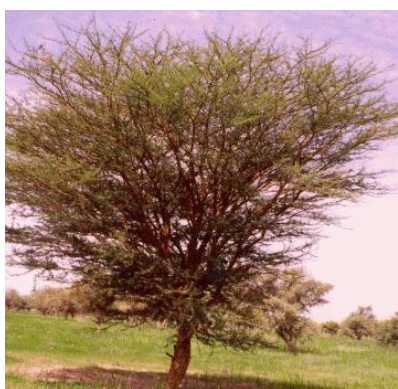
(CC) BY © Jeff Heath and the Dogon and Bangime Languages Project



(CC) BY © Jeff Heath and the Dogon and Bangime Languages Project

[Acacia seyal](#) Delile .

- **sà:-tòmbó nàrà** . "acacia sp."



(CC) BY © Jeff Heath and the Dogon and Bangime Languages Project



(CC) BY © Jeff Heath and the Dogon and Bangime Languages Project

[Acacia tortilis](#) (Forssk.)Hayne .

- **sá:-tómbò** . "acacia sp."



(CC) BY © Jeff Heath and the Dogon and Bangime Languages Project



(CC) BY © Jeff Heath and the Dogon and Bangime Languages Project



[Aeschynomene indica](#) L. .

- **kòjì-pùlùlù** . "tall herb sp."



(CC) BY © Jeff Heath and the Dogon and Bangime

Languages Project



(CC) BY © Jeff Heath and the Dogon and Bangime

Languages Project



(CC) BY © Jeff Heath and the Dogon and Bangime

Languages Project

[Alysicarpus ovalifolius](#) (Schum.)Leonard .

- **sí: kòjì** . "herb sp."



(CC) BY © Jeff Heath and the Dogon and Bangime

Languages Project



(CC) BY © Jeff Heath and the Dogon and Bangime

Languages Project



(CC) BY © Jeff Heath and the Dogon and Bangime

Languages Project

[Arachis hypogaea](#) L. .

- **kénjé** . "peanut".



(CC) BY-SA © Pollinator



(CC) BY-NC-SA © Research Institute Senckenberg



(CC) BY © Roberto Verzo

[Bauhinia reticulata](#) DC. .

- **kòrúmbè** . "tree sp."



(CC) BY © Jeff Heath and the Dogon and Bangime  
Languages Project



(CC) BY © Jeff Heath and the Dogon and Bangime  
Languages Project



(CC) BY © Jeff Heath and the Dogon and Bangime  
Languages Project

[Bauhinia rufescens](#) Lam. .

- **šimòndó-nàrà** . "tree sp."



(CC) BY © Jeff Heath and the Dogon and Bangime  
Languages Project



(CC) BY © Jeff Heath and the Dogon and Bangime  
Languages Project



(CC) BY © Jeff Heath and the Dogon and Bangime  
Languages Project

[Cassia sieberiana](#) DC. .

- **nùmá-gǐrà** . "tree sp."



(CC) BY © Jeff Heath and the Dogon and Bangime  
Languages Project



(CC) BY © Jeff Heath and the Dogon and Bangime  
Languages Project



(CC) BY © Jeff Heath and the Dogon and Bangime  
Languages Project

***Chamaecrista absus*** (L.)H.S.Irwin & Barneby .

- **gǐdó-pèrì** . "bush sp.". Lit. "eye-...".



(CC) BY © Jeff Heath and the Dogon and Bangime  
Languages Project



(CC) BY © Jeff Heath and the Dogon and Bangime  
Languages Project



(CC) BY © Jeff Heath and the Dogon and Bangime  
Languages Project

***Chamaecrista mimosoides*** (L.)Greene .

- **kǒjì tùmá-è** . "herb sp.". Lit. "herb-stick".



(CC) BY © Jeff Heath and the Dogon and Bangime  
Languages Project



(CC) BY © Jeff Heath and the Dogon and Bangime  
Languages Project

[Chamaecrista nigricans](#) (Vahl)Greene .

- àgà-sõḡ nàrà . "herb sp."
- àgá sòḡ . "herb sp."



(CC) BY © Jeff Heath and the Dogon and Bangime Languages Project



(CC) BY © Jeff Heath and the Dogon and Bangime Languages Project



(CC) BY © Jeff Heath and the Dogon and Bangime Languages Project

[Crotalaria podocarpa](#) DC. . Characteristics: annual herb with spreading stems; up to 3 cm tall; trifoliate leaves; pale yellow flowers; fruit is an inflated pod with stiff hair. Biotope: sandy soil. ([Van Rooyen et al. 2001](#): 130)

- gèw"é kàḡi . "herb sp."



(CC) BY © Jeff Heath and the Dogon and Bangime Languages Project



(CC) BY © Jeff Heath and the Dogon and Bangime Languages Project



(CC) BY © Jeff Heath and the Dogon and Bangime Languages Project

[Crotalaria retusa](#) L. .

- gèw"é kàḡi . "herb sp."



(CC) BY © Jeff Heath and the Dogon and Bangime  
Languages Project



(CC) BY © Jeff Heath and the Dogon and Bangime  
Languages Project



(CC) BY © Jeff Heath and the Dogon and Bangime  
Languages Project

[Dalbergia melanoxylo](#) Guill. & Perr. .

- **píndá** . "tree sp."



(CC) BY © Jeff Heath and the Dogon and Bangime  
Languages Project



(CC) BY © Jeff Heath and the Dogon and Bangime  
Languages Project



(CC) BY © Jeff Heath and the Dogon and Bangime  
Languages Project

[Detarium microcarpum](#) Guill. & Perr. .

- **ándàrà** . "tree sp."



(CC) BY © Jeff Heath and the Dogon and Bangime  
Languages Project



(CC) BY-NC-SA © Research Institute Senckenberg



(CC) BY © Jeff Heath and the Dogon and Bangime  
Languages Project

***Dichrostachys cinerea*** (L.)Wight & Arn. . Characteristics: shrub or small tree; 1-3m tall, flowers in an elongated drooping spike, composed of two sections: a pink tuft of sterile flowers and below a section of fertile yellow flowers; the pods are curly and twisted;. Biotope: grassland, sandy soil. ([Van Rooyen et al. 2001](#): 44)

- pójjó . "shrub sp."



(CC) BY © Jeff Heath and the Dogon and Bangime  
Languages Project



(CC) BY © Jeff Heath and the Dogon and Bangime  
Languages Project



(CC) BY © Jeff Heath and the Dogon and Bangime  
Languages Project

***Faidherbia albida*** (Delile)A.Chev. .

- kú:n . "balanzan tree".



(CC) BY-NC © Bart Wursten



(CC) BY-NC-SA © Research Institute Senckenberg



(CC) BY-NC © Bart Wursten

[Indigofera tinctoria tinctoria](#) .

- gàrà . "herb sp."



(CC) BY © Jeff Heath and the Dogon and Bangime Languages Project



(CC) BY © Jeff Heath and the Dogon and Bangime Languages Project



(CC) BY © Jeff Heath and the Dogon and Bangime Languages Project

[Neptunia oleracea](#) Lour. .

- àrèdámà kòjíwè . "floating vine sp."



(CC) BY-NC-SA © Research Institute Senckenberg



(CC) BY-NC © Karine Aigner



(CC) BY © Jeff Heath and the Dogon and Bangime Languages Project

[Parkia biglobosa](#) (Jacq.)G.Don .

- **póđi** . "locust-bean (nééré) tree".



(CC) BY-NC-SA © Research Institute Senckenberg



(CC) BY-NC-SA © Research Institute Senckenberg



(CC) BY-SA ©

[Parkinsonia aculeata](#) L. .

- **àndàsà:rà-tíngó** . "parkinsonia tree".



(CC) BY © Jeff Heath and the Dogon and Bangime Languages Project



(CC) BY © Jeff Heath and the Dogon and Bangime Languages Project



(CC) BY © Forest & Kim Starr

[Prosopis africana](#) (Guill. & Perr.)Taub. .

- **kírà** . "a wood for blacksmiths' charcoal".



(CC) BY © Jeff Heath and the Dogon and Bangime Languages Project

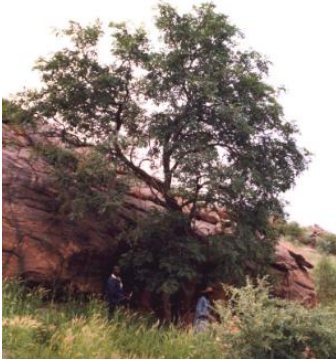


(CC) BY © Jeff Heath and the Dogon and Bangime Languages Project



***Pterocarpus erinaceus*** Poir. .

- ḡwè"wé . "tree sp."



(CC) BY © Jeff Heath and the Dogon and Bangime  
Languages Project



(CC) BY © Jeff Heath and the Dogon and Bangime  
Languages Project



(CC) BY © Jeff Heath and the Dogon and Bangime  
Languages Project

***Pterocarpus lucens*** Guill. & Perr. .

- béwrò . "tree sp."



(CC) BY-NC-SA © Research Institute Senckenberg



(CC) BY-NC-SA © Research Institute Senckenberg



(CC) BY © Jeff Heath and the Dogon and Bangime  
Languages Project

***Senna italica italica*** .

- ḡjè-gé kàráḡkàrà . "bush sp."



(CC) BY © Jeff Heath and the Dogon and Bangime  
Languages Project



(CC) BY © Jeff Heath and the Dogon and Bangime  
Languages Project



(CC) BY © Jeff Heath and the Dogon and Bangime  
Languages Project

[Senna obtusifolia](#) (L.)H.S.Irwin & Barneby .

- **kàràŋ-kàrà** . "herb sp."



(CC) BY © Jeff Heath and the Dogon and Bangime  
Languages Project



(CC) PUBLICDOMAIN © Michael Kesi



(CC) BY © Jeff Heath and the Dogon and Bangime  
Languages Project

[Senna occidentalis](#) (L.)Link .

- **gïwná ïšindà** . "bush sp.". Lit. "odor unpleasant".



(CC) BY-NC © Bart Wursten



(CC) BY © John Tann



Public Domain by

[Tamarindus indica](#) L. .

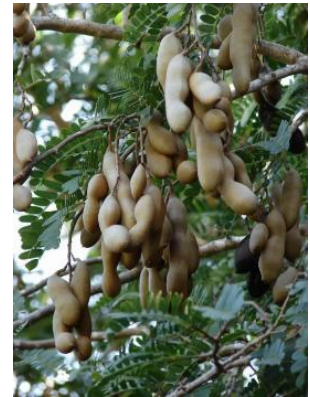
- sòŋ . "tamarind".



(CC) BY © Jeff Heath and the Dogon and Bangime  
Languages Project



(CC) BY © Jeff Heath and the Dogon and Bangime  
Languages Project



(CC) BY © Forest & Kim Starr

[Vachellia nilotica](#) .

- pó:nà . "acacia sp.".



(CC) BY © Jeff Heath and the Dogon and Bangime  
Languages Project



(CC) BY © Jeff Heath and the Dogon and Bangime  
Languages Project



(CC) BY © Jeff Heath and the Dogon and Bangime  
Languages Project

[Vigna racemosa](#) (G.Don)Hutch. & Dalziel .

- nùŋké tètù . "wild cow-pea".



(CC) BY-NC © Adjima Thiombiano



(CC) BY-NC © Marco Schmidt



(CC) BY-NC © Adjima Thiombiano

*Vigna subterranea* (L.)Verdc. .

- kènǰé dīnǐ . "ground nut".



(CC) BY-SA © Kembangraps



(CC) MARK © Kkibumba



(CC) BY-SA ©

*Vigna unguiculata* (L.)Walp. .

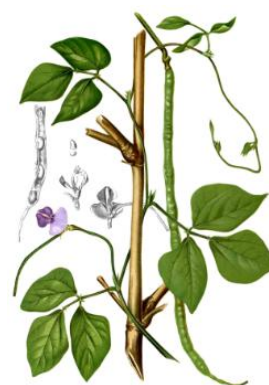
- núnǰkè . "cow-pea".



(CC) BY-SA ©



(CC) BY-SA © Ton Rulkens



Public Domain by

*Zornia glochidiata* DC. .

- jòn-wè kèránǰé . "herb sp".



(CC) BY-NC © Bart Wursten



(CC) BY-NC © Bart Wursten



(CC) BY-NC © Bart Wursten

**Order: Gentianales**

**Family: Apocynaceae**

**[Calotropis procera](#) .**

- **bàmbá-pòy** . "shrub sp."



(CC) BY © Jeff Heath and the Dogon and Bangime  
Languages Project



(CC) BY © Jeff Heath and the Dogon and Bangime  
Languages Project

**[Caralluma acutangula](#) Decne. .**

- **dùrù-sùgùrù** . "succulent plant sp."



(CC) BY © Jeff Heath and the Dogon and Bangime Languages Project



(CC) BY © Jeff Heath and the Dogon and Bangime Languages Project



(CC) BY © Jeff Heath and the Dogon and Bangime Languages Project

[Saba senegalensis](#) (A. DC.) Pichon .

- **kámbé** . "zaban (woody liana )".



(CC) BY-NC-SA © Research Institute Senckenberg



(CC) BY © Jeff Heath and the Dogon and Bangime Languages Project



(CC) BY-NC-SA © Research Institute Senckenberg

**Family: Rubiaceae**

[Ferretia apodanthera](#) Delile .

- **pèsè pǐgírìyè** . "shrub sp.".



(CC) BY © Jeff Heath and the Dogon and Bangime Languages Project



(CC) BY © Jeff Heath and the Dogon and Bangime Languages Project

*Gardenia erubescens* Stapf & Hutch. .

- **bèdà-kòdó yò** . "shrub sp.". Lit. "... female".



(CC) BY © Jeff Heath and the Dogon and Bangime  
Languages Project



(CC) BY © Jeff Heath and the Dogon and Bangime  
Languages Project



(CC) BY © Jeff Heath and the Dogon and Bangime  
Languages Project

*Gardenia sokotensis* Hutch. .

- **kòdògò mírà** . "shrub sp.".



(CC) BY-NC-SA © Research Institute Senckenberg



(CC) BY-NC-SA © Research Institute Senckenberg



(CC) BY-NC-SA © Research Institute Senckenberg

*Gardenia ternifolia* Schumach. & Thonn. .

- **bèdá-kòdò** . "shrub sp.".



(CC) BY © Jeff Heath and the Dogon and Bangime  
Languages Project



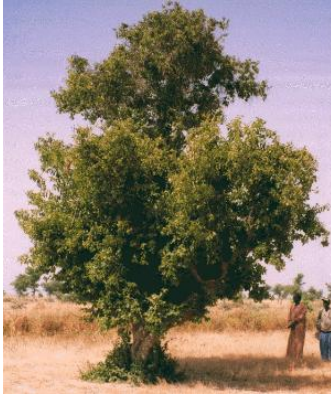
(CC) BY © Jeff Heath and the Dogon and Bangime  
Languages Project



(CC) BY © Jeff Heath and the Dogon and Bangime  
Languages Project

**Mitragyna inermis** (Willd.) Kuntze .

- **péndò** . "tree sp."



(CC) BY © Jeff Heath and the Dogon and Bangime  
Languages Project



(CC) BY © Jeff Heath and the Dogon and Bangime  
Languages Project



(CC) BY © Jeff Heath and the Dogon and Bangime  
Languages Project

**Sarcocephalus latifolius** Sm. .

- **í:dí** . "tree sp."



(CC) BY-NC-SA © Research Institute Senckenberg



(CC) BY-NC-SA © Research Institute Senckenberg



(CC) BY © Jeff Heath and the Dogon and Bangime  
Languages Project

**Spermacoce filifolia** (Schumach. & Thonn.) J.-P. Lebrun & Stork .

- **wòm̀b̀-̀nùdù-̀wèrè** . "herb sp."





(CC) BY-NC-SA © Research Institute Senckenberg



(CC) BY-NC-SA © Research Institute Senckenberg



(CC) BY © Jeff Heath and the Dogon and Bangime Languages Project

***Spermacoce ruelliae*** DC. .

- á<sup>n</sup>-jémbè . "herb sp.".



(CC) BY © Jeff Heath and the Dogon and Bangime Languages Project



(CC) BY © Jeff Heath and the Dogon and Bangime Languages Project



(CC) BY © Jeff Heath and the Dogon and Bangime Languages Project

**Order: Lamiales**

**Family: Lamiaceae**

***Hyptis spicigera*** (Aubl.) Harley & J.F.B.Pastore .

- wòmbo kóji . "herb sp.".



(CC) BY © Jeff Heath and the Dogon and Bangime  
Languages Project



(CC) BY © Jeff Heath and the Dogon and Bangime  
Languages Project



(CC) BY-NC-SA © Research Institute Senckenberg

[Leucas](#) .

- **nànyé** . "herb sp."



(CC) BY-NC-SA © Research Institute Senckenberg



(CC) BY-NC-SA © Research Institute Senckenberg



(CC) BY-NC © Bart Wursten

[Leucas martinicensis](#) (Jacq.) R.Br. .

- **bòngè-bóngé** . "herb sp."



(CC) BY © Jeff Heath and the Dogon and Bangime  
Languages Project



(CC) BY-NC © Bart Wursten



(CC) BY © Jeff Heath and the Dogon and Bangime  
Languages Project

[\*Ocimum americanum\*](#) L. . Characteristics: herb; up to 50 cm tall; elongated leaves in clusters; pink to white flowers; .  
([Burke 2007](#): 86)

- **gǐdó-pàgàrà** . "bush sp."



(CC) BY © Jeff Heath and the Dogon and Bangime  
Languages Project



(CC) BY © Jeff Heath and the Dogon and Bangime  
Languages Project



(CC) BY © Jeff Heath and the Dogon and Bangime  
Languages Project

#### Family: Orobanchaceae

[\*Striga hermonthica\*](#) (Del.) Benth. .

- **bó<sup>h</sup>wrú** . "herb sp."



(CC) BY-NC-SA © Research Institute Senckenberg



(CC) BY-NC-SA © Research Institute Senckenberg



(CC) BY-NC-SA © Delile, A.R., 1813. Description de  
l'Égypte

#### Family: Pedaliaceae

[\*Ceratotheca sesamoides\*](#) Endl. .

- **òdòròmíndò** . "herb sp."



(CC) BY © Jeff Heath and the Dogon and Bangime Languages Project



(CC) BY © Jeff Heath and the Dogon and Bangime Languages Project



(CC) BY © Jeff Heath and the Dogon and Bangime Languages Project

*Sesamum alatum* P. Thonn. .

- èndè-pèrí tètè . "wild sesame (herb)".



(CC) BY-NC © Bart Wursten



(CC) BY-NC © Bart Wursten



(CC) BY-NC © Bart Wursten

*Sesamum indicum* .

- èndè-pèrí . "sesame".



(CC) BY-NC-SA © Research Institute Senckenberg



(CC) BY-NC-SA © Research Institute Senckenberg



(CC) MARK © Franz Eugen Köhler, Köhler's Medizinal-Pflanzen

**Family: Plantaginaceae**

**[Scoparia dulcis](#)** L. .

- **tĩmĩ-tĩmĩ** . "herb sp."



(CC) BY © India Biodiversity Portal



(CC) BY-NC-SA © Research Institute Senckenberg



(CC) BY-SA ©

**Order: Magnoliales**

**Family: Annonaceae**

**[Hexalobus monopetalus](#)** (A. Rich.) Engl. & Diels .

- **gúnjúm** . "tree sp."



(CC) BY © Jeff Heath and the Dogon and Bangime  
Languages Project



(CC) BY © Jeff Heath and the Dogon and Bangime  
Languages Project



(CC) BY © Jeff Heath and the Dogon and Bangime  
Languages Project

**[Xylopiya aethiopica](#)** (Dunal) A. Rich. .

- **pèrà** . "grains of Selim".



(CC) BY-NC-SA © TanzaniaPlantCollaboration



(CC) BY ©



(CC) BY-NC-SA © TanzaniaPlantCollaboration

## Order: Malpighiales

### Family: Chrysobalanaceae

[\*Neocarya macrophylla\*](#) (Sabine) Prance .

- má<sup>n</sup>-wây . "tree sp."



(CC) BY © Jeff Heath and the Dogon and Bangime Languages Project



(CC) BY © Jeff Heath and the Dogon and Bangime Languages Project



(CC) BY-SA ©

### Family: Euphorbiaceae

[\*Euphorbia austro-occidentalis\*](#) Thell. .

- kó:-sèmò-kòjí:wè . "prostrate herb sp."



(CC) BY © Jeff Heath and the Dogon and Bangime Languages Project



(CC) BY © Jeff Heath and the Dogon and Bangime Languages Project



(CC) BY © Jeff Heath and the Dogon and Bangime Languages Project

[Euphorbia balsamifera](#) Aiton .

- **gèméjè** . "balsam-spurge (shrub)".



(CC) BY © Jeff Heath and the Dogon and Bangime Languages Project



(CC) BY © Jeff Heath and the Dogon and Bangime Languages Project



(CC) BY-NC © Edinburgh!

[Euphorbia chapmanii](#) Oudejans .

- **šîrê:<sup>n</sup>** . "thorny bush".

[Euphorbia hirta](#) L. .

- **kó:-sèmò-kòjì:wè** . "erect herb sp.".



(CC) BY © Jeff Heath and the Dogon and Bangime Languages Project



(CC) BY © Jeff Heath and the Dogon and Bangime Languages Project



(CC) BY © India Biodiversity Portal

[Ricinus communis](#) L. .

- bè:gé-írìwà . "shrub sp."



(CC) BY-SA © Andreas Früh (Andel)



(CC) BY-SA © H. Zell



(CC) BY © Jeff Heath and the Dogon and Bangime Languages Project

**Family: Phyllanthaceae**

[Flueggea virosa virosa](#) .

- sànjá-sàgù . "tree sp. (Chinese waterberry)".





(CC) BY © Jeff Heath and the Dogon and Bangime  
Languages Project



(CC) BY © Jeff Heath and the Dogon and Bangime  
Languages Project



(CC) BY © Jeff Heath and the Dogon and Bangime  
Languages Project

**Order: Malvales**

**Family: Malvaceae**

**[Adansonia digitata](#) L. .**

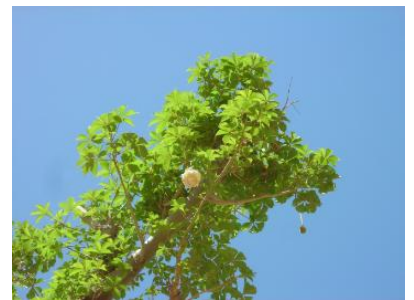
- **pésé** . "baobab tree".



Public Domain by unknown



(CC) BY © Jeff Heath and the Dogon and Bangime  
Languages Project



(CC) BY © Jeff Heath and the Dogon and Bangime  
Languages Project

**[Ceiba pentandra](#) (L.) Gaertn. .**

- **wánjá** . "tree sp".



(CC) BY © Jeff Heath and the Dogon and Bangime  
Languages Project



(CC) BY-NC-SA © Reinaldo Aguilar

[Cola cordifolia](#) (Cav.) R. Br. .

- **kò:rè gúndà** . "tree sp."



(CC) BY © Jeff Heath and the Dogon and Bangime  
Languages Project



(CC) BY © Jeff Heath and the Dogon and Bangime  
Languages Project



(CC) BY © Jeff Heath and the Dogon and Bangime  
Languages Project

[Cola laurifolia](#) Mast. .

- **kó:rè** . "tree sp."



(CC) BY © Jeff Heath and the Dogon and Bangime  
Languages Project



(CC) BY © Jeff Heath and the Dogon and Bangime  
Languages Project



(CC) BY © Jeff Heath and the Dogon and Bangime  
Languages Project

**Corchorus** Patrity, 1965 .

- òrò- [mêy-mêy] . "herb sp."



(CC) BY-NC-SA © Research Institute Senckenberg



(CC) BY-NC © Bart Wursten

**Gossypium hirsutum** L. .

- kùrá:ndè . "cotton".
- àndásàrà kùrá:ndè . "cotton".



(CC) BY-NC-SA © Arthur Chapman



(CC) BY-NC © Bart Wursten



(CC) BY © Jeff Heath and the Dogon and Bangime Languages Project

**Hibiscus cannabinus** L. .

- pólí . "erect herb sp."



(CC) BY © Jeff Heath and the Dogon and Bangime  
Languages Project



(CC) BY © Jeff Heath and the Dogon and Bangime  
Languages Project



(CC) BY © Jeff Heath and the Dogon and Bangime  
Languages Project

**[Hibiscus longisepalus](#)** Hochr. .

- ànjí tètè . "bush sp."



(CC) BY © Jeff Heath and the Dogon and Bangime  
Languages Project



(CC) BY © Jeff Heath and the Dogon and Bangime  
Languages Project



(CC) BY © Jeff Heath and the Dogon and Bangime  
Languages Project

**[Hibiscus ovalifolius](#)** (Forssk.) Vahl .

- sèré-sèrè . "bush sp."



(CC) BY © Jeff Heath and the Dogon and Bangime Languages Project



(CC) BY © Jeff Heath and the Dogon and Bangime Languages Project

[Hibiscus sabdariffa](#) L. .

- **ánjī** . "roselle".



(CC) BY © Jeff Heath and the Dogon and Bangime Languages Project



(CC) BY-NC-SA © Marie Fourdrigniez



(CC) BY © Jeff Heath and the Dogon and Bangime Languages Project

[Sida abutilifolia](#) Mill. .

- **óri-bógòdò** . "bush sp.".



(CC) BY-NC © inaturalist



(CC) BY-NC © Picasa



(CC) BY © Jeff Heath and the Dogon and Bangime Languages Project

[Sida cordifolia](#) .

- ḡərí-kàǰi . "herb sp."



(CC) BY-NC © Bart Wursten



(CC) BY © India Biodiversity Portal



(CC) BY-NC-SA © Sharpj99

[Sterculia setigera](#) Delile .

- ðné-ðnè . "tree sp."



(CC) BY-NC-SA © Research Institute Senckenberg



(CC) BY © Jeff Heath and the Dogon and Bangime Languages Project



(CC) BY-NC-SA © Research Institute Senckenberg

***Triumfetta pentandra*** A. Rich. ex Guill. & Perr. .

- **bèwró-dùrù-kòjìwè** . "herb".



(CC) BY © Jeff Heath and the Dogon and Bangime  
Languages Project



(CC) BY © Jeff Heath and the Dogon and Bangime  
Languages Project



(CC) BY ©

***Waltheria indica*** L. .

- **óřì-bógòdò** . "bush sp.".



(CC) BY © Jeff Heath and the Dogon and Bangime  
Languages Project



(CC) BY © Jeff Heath and the Dogon and Bangime  
Languages Project



(CC) BY © Jeff Heath and the Dogon and Bangime  
Languages Project

**Order: Myrtales**

**Family: Lythraceae**

***Lawsonia inermis*** L. .

- **púdí** . "henna bush".



(CC) BY © Jeff Heath and the Dogon and Bangime Languages Project

**Family: Myrtaceae**

[Eucalyptus astringens](#) (Maiden) Maiden .

- šíníwá:r tíngóyè . "eucalyptus tree".

[Psidium guajava](#) .

- bùyà:tí . "guava".



(CC) BY ©



(CC) BY © Forest & Kim Starr



(CC) MARK © Galapagos Islands.

**Family: Onagraceae**

[Ludwigia hyssopifolia](#) (G. Don) Exell .

- òròmémé tèwè . "herb sp.". Lit. "Corchorus wild".





(CC) BY © Jeff Heath and the Dogon and Bangime  
Languages Project



(CC) BY © Jeff Heath and the Dogon and Bangime  
Languages Project



(CC) BY © Jeff Heath and the Dogon and Bangime  
Languages Project

**Order: Nymphaeales**

**Family: Nymphaeaceae**

**[Nymphaea lotus](#) L. .**

- kúrumbà . "water lily sp."



(CC) BY © Jeff Heath and the Dogon and Bangime  
Languages Project



(CC) BY © Jeff Heath and the Dogon and Bangime  
Languages Project



(CC) BY-NC-SA © Research Institute Senckenberg

**Order: Rosales**

**Family: Moraceae**

**[Ficus sycomorus](#) .**

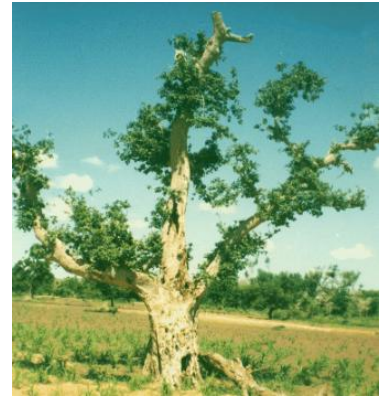
- káw<sup>n</sup> . "fig tree sp."



(CC) BY © Jeff Heath and the Dogon and Bangime Languages Project



(CC) BY © Jeff Heath and the Dogon and Bangime Languages Project



(CC) BY © Jeff Heath and the Dogon and Bangime Languages Project

## Family: Rhamnaceae

[Ziziphus mauritiana](#) Lam. .

- **tómbó** . "jujube (shrub)".



(CC) BY-SA ©



(CC) BY © Jeff Heath and the Dogon and Bangime Languages Project



(CC) BY-NC © Bart Wursten

## Order: Sapindales

### Family: Anacardiaceae

[Anacardium occidentale](#) L. .

- **émbé-dámà** . "cashew tree (planted)".



(CC) BY © Jeff Heath and the Dogon and Bangime  
Languages Project

***Heeria insignis*** (Bernh. ex Krauss) R. & A.Fernandes .

- àràmbúru èntiyè . "tree sp."



(CC) BY © Jeff Heath and the Dogon and Bangime  
Languages Project



(CC) BY © Jeff Heath and the Dogon and Bangime  
Languages Project



(CC) BY © Jeff Heath and the Dogon and Bangime  
Languages Project

***Mangifera indica*** L. .

- màṅgòró . "mango".



(CC) BY-NC-SA © Research Institute Senckenberg



(CC) BY © Jeff Heath and the Dogon and Bangime  
Languages Project



(CC) BY-SA ©

***Sclerocarya birrea*** .

- múy<sup>n</sup>à . "tree sp."



(CC) BY © Jeff Heath and the Dogon and Bangime  
Languages Project



(CC) BY-NC-SA © Research Institute Senckenberg



(CC) BY © Jeff Heath and the Dogon and Bangime  
Languages Project

***Spondias mombin*** Jacq. .

- **sǎ:njà** . "tree sp."



(CC) BY © Jeff Heath and the Dogon and Bangime  
Languages Project



(CC) BY-NC-SA © Research Institute Senckenberg



(CC) BY © Jeff Heath and the Dogon and Bangime  
Languages Project

**Family: Meliaceae**

***Azadirachta indica*** A. Juss. .

- **t̃ɪŋgó-kàdá-kàdá** . "neem tree".



(CC) BY © Jeff Heath and the Dogon and Bangime  
Languages Project



(CC) BY © Jeff Heath and the Dogon and Bangime  
Languages Project

*Khaya senegalensis* (Desv.) A. Juss. .

- **té:ndà** . "tree sp."



(CC) BY © Jeff Heath and the Dogon and Bangime  
Languages Project



(CC) BY-NC-SA © Research Institute Senckenberg



(CC) BY © Jeff Heath and the Dogon and Bangime  
Languages Project

**Family: Rutaceae**

*Citrus limon* (L.) Burm. f. .

- **nèmbùrú tòntòn** . "lemon".



(CC) PUBLICDOMAIN © Pavel Buršík



(CC) BY-SA ©



(CC) BY-SA ©

[Citrus sinensis](#) L. .

- **nèmbùrú** . "orange".



(CC) BY-SA © Mifa



(CC) BY © Jeff Heath and the Dogon and Bangime

Languages Project



(CC) BY © Jeff Heath and the Dogon and Bangime

Languages Project

**Family: Sapindaceae**

[Lepisanthes senegalensis](#) (Poir.) Leenhouts .

- **sómíyá** . "tree sp. ".



(CC) BY © Jeff Heath and the Dogon and Bangime

Languages Project



(CC) BY © Jeff Heath and the Dogon and Bangime

Languages Project



(CC) BY © Jeff Heath and the Dogon and Bangime

Languages Project

**Order: Solanales**

**Family: Convolvulaceae**

[Ipomoea aquatica](#) Forsskal .

- **gámáráji** . "trailing vine sp.".



(CC) BY © Jeff Heath and the Dogon and Bangime  
Languages Project



(CC) BY © Jeff Heath and the Dogon and Bangime  
Languages Project



(CC) BY © Jeff Heath and the Dogon and Bangime  
Languages Project

***Ipomoea asarifolia*** (Desr.) Roem. & Schult. .

- **pàràsímò** . "trailing vine sp."



(CC) BY © Jeff Heath and the Dogon and Bangime  
Languages Project



(CC) BY-NC-SA © Research Institute Senckenberg



(CC) BY © Jeff Heath and the Dogon and Bangime  
Languages Project

***Jacquemontia tamnifolia*** (L.) Griseb. .

- **pàdàgá-pàndàgà** . "sprawling herb sp."



(CC) BY © Jeff Heath and the Dogon and Bangime  
Languages Project



(CC) BY © Jeff Heath and the Dogon and Bangime  
Languages Project

**Family: Solanaceae**

***Capsicum*** (H.L. Clark, 1917) .

- **képéřì** . "pepper".



(CC) BY-SA ©

***Nicotiana rustica*** L. .

- **tàwà-bámbâ**: . "African tobacco".



(CC) BY-SA © Magnus Manske



(CC) BY-SA © C T Johansson



(CC) BY-SA © Tubifex

***Nicotiana tabacum*** L. .

- **táwà** . "tobacco".



(CC) BY-SA ©



(CC) BY-SA © Raffi Kojian



(CC) BY-SA ©



***Solanum incanum*** L. . Characteristics: shrub, 80cm tall, many branches that are covered with hairs and spines, large lobed leaves, purplish-white flowers, fruit turns from green to yellow when ripe. Biotope: dry river course. ([Van Rooyen et al. 2001](#): 76)

- **sijà gé kèrìyè** . "thorny bush sp."



(CC) BY © Jeff Heath and the Dogon and Bangime Languages Project



(CC) BY-NC © Bart Wursten



(CC) BY © Jeff Heath and the Dogon and Bangime Languages Project

***Solanum melongena*** L. .

- **àndàsàrà kèrìyè** . "European eggplant".



(CC) BY ©



(CC) BY-SA ©



(CC) BY-SA © Ranjith Siji from Cochin, India

***Solanum tuberosum*** L. .

- **pómtê:r** . "potato".



(CC) BY-SA ©



(CC) BY-SA ©



(CC) BY-SA ©

**Order: Vitales**

**Family: Vitaceae**

[Cissus quadrangularis](#) L. .

- yò:-gé-dámà . "liana sp."



(CC) BY-SA © Marco Schmidt



(CC) BY © Jeff Heath and the Dogon and Bangime  
Languages Project



(CC) BY © Jeff Heath and the Dogon and Bangime  
Languages Project

**Order: Zygophyllales**

**Family: Zygophyllaceae**

[Balanites aegyptiacus](#) .

- só . "wild date tree".



(CC) BY © Jeff Heath and the Dogon and Bangime  
Languages Project



(CC) BY © Jeff Heath and the Dogon and Bangime  
Languages Project



(CC) BY © Jeff Heath and the Dogon and Bangime  
Languages Project

*[Tribulus terrestris](#)* L. . Characteristics: creeping growth, yellow flowers, flower 1 cm in diameter, soft-haired leaves, woody, sharp, spiny fruits that can puncture animals' hoofs, bare feet and bicycle tyres. ([Van der Walt and le Riche 1999](#): 109)

- *sí kòríyè* . "herb sp."



(CC) BY © Jeff Heath and the Dogon and Bangime  
Languages Project



(CC) BY-SA © Stan Shebs



(CC) BY-SA © Stan Shebs

**Class: other**

**Order: Lamiales**

**Family: Acanthaceae**

*[Monechma ndellense](#)* Lindau .

- *yàgádà* . "herb sp."



(CC) BY © Jeff Heath and the Dogon and Bangime  
Languages Project



(CC) BY-NC-SA © Research Institute Senckenberg



(CC) BY-NC-SA © Research Institute Senckenberg

**Order: Ranunculales**

**Family: Menispermaceae**

***Tinospora bakis*** (A.Rich.) Miers .

- kònónòdò . "woody liana sp."



(CC) BY © Jeff Heath and the Dogon and Bangime  
Languages Project



(CC) BY © Jeff Heath and the Dogon and Bangime  
Languages Project



(CC) BY © Jeff Heath and the Dogon and Bangime  
Languages Project

**Kingdom: Viridiplantae**

**Phylum: Streptophyta**

**Class: Magnoliopsida**

**Order: Brassicales**

**Family: Capparaceae**

**[Boscia angustifolia](#)** A. Rich. .

- **símóndó** . "tree sp."



(CC) BY © Jeff Heath and the Dogon and Bangime  
Languages Project



(CC) BY © Jeff Heath and the Dogon and Bangime  
Languages Project



(CC) BY © Jeff Heath and the Dogon and Bangime  
Languages Project

**[Maerua angolensis](#)** .

- **bésà** . "tree sp."



(CC) BY-NC © Bart Wursten



(CC) BY-NC © Bart Wursten



(CC) BY © Jeff Heath and the Dogon and Bangime  
Languages Project

**Order: Caryophyllales**

**Family: Amaranthaceae**

**[Pandiaka angustifolia](#)** (Vahl) Hepper .

- **bàràamá-jèmbèrè** . "herb sp."



(CC) BY © Jeff Heath and the Dogon and Bangime  
Languages Project



(CC) BY © Jeff Heath and the Dogon and Bangime  
Languages Project



(CC) BY © Jeff Heath and the Dogon and Bangime  
Languages Project

***Pupalia lappacea*** (L.) Juss. . Characteristics: erect or sprawling herb; up to 90 cm tall; stems with multiple opposite branches that grow from nodes; branches are 4-angled; the mature inflorescence is up to 50 cm long and has green flowers; fruit is a capsule with shiny brown seeds. Biotope: sandy soil. ([Van Rooyen et al. 2001](#): 156)

- **sīyàgé kòròmbò** . "herb sp.". Lit. "mouse-cramcram".



(CC) BY-NC © Bart Wursten



(CC) BY-NC © Bart Wursten



Public Domain by Christfried Naumann

**Order: Celastrales**

**Family: Celastraceae**

***Loeseneriella africana*** (Willd.) R. Wilczek .

- **ówà** . "woody liana sp.".



(CC) BY © Jeff Heath and the Dogon and Bangime  
Languages Project



(CC) BY-NC-SA © Research Institute Senckenberg



(CC) BY © Jeff Heath and the Dogon and Bangime  
Languages Project

**Order: Fabales**

**Family: Polygalaceae**

**[Securidaca longepedunculata](#) .**

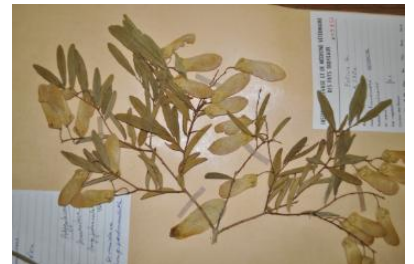
- **tóddò** . "tree sp."



(CC) BY © Jeff Heath and the Dogon and Bangime  
Languages Project



(CC) BY © Jeff Heath and the Dogon and Bangime  
Languages Project



(CC) BY © Jeff Heath and the Dogon and Bangime  
Languages Project

**Order: Gentianales**

**Family: Apocynaceae**

**[Baissea multiflora](#) A.DC. .**

- **twe:-twe:** . "tree sp."



(CC) BY-NC-SA © Marco Schmidt



(CC) BY-NC-SA © Marco Schmidt



(CC) BY © Jeff Heath and the Dogon and Bangime  
Languages Project

[Caralluma adscendens](#) (Roxb.) Haw. .

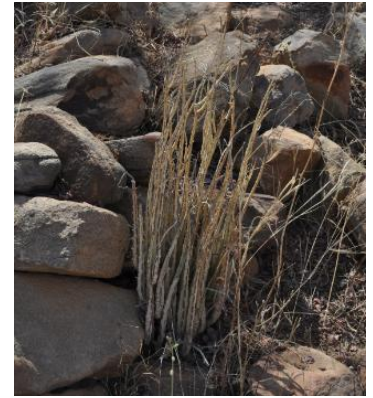
- **sùgùrù-té:mbá** . "succulent plant sp."



(CC) BY © Jeff Heath and the Dogon and Bangime  
Languages Project



(CC) BY © Jeff Heath and the Dogon and Bangime  
Languages Project



(CC) BY © Jeff Heath and the Dogon and Bangime  
Languages Project

[Cynanchum viminale](#) .

- **kĩmé-pàjè** . "vine sp."



(CC) BY-NC-SA © Research Institute Senckenberg



(CC) BY-NC © Bart Wursten



(CC) BY-SA © Ton Rulkens



[Leptadenia hastata](#) .

- kàmbé-kòrò . "vine sp."



(CC) BY-NC-SA © Research Institute Senckenberg



(CC) BY © Jeff Heath and the Dogon and Bangime Languages Project



(CC) BY © Jeff Heath and the Dogon and Bangime Languages Project

[Leptadenia pyrotechnica](#) (Forssk.) Decne. .

- kàmbé-kòró nàrà . "bush sp."



(CC) BY © Jeff Heath and the Dogon and Bangime Languages Project



(CC) BY-NC-SA © Bibliotheca Alexandrina - EOL Ar



(CC) BY-SA ©

[Pergularia tomentosa](#) L. .

- kà:ró pòrùyàmí . "bush sp."



(CC) BY © Jeff Heath and the Dogon and Bangime  
Languages Project



(CC) BY © Jeff Heath and the Dogon and Bangime  
Languages Project



(CC) BY © Jeff Heath and the Dogon and Bangime  
Languages Project

**Order: Lamiales**

**Family: Acanthaceae**

[Ruellia cyanea](#) Boj. ex Nees .

- **gǐdó pèrì** . "herb sp."



(CC) BY © Jeff Heath and the Dogon and Bangime  
Languages Project



(CC) BY © Jeff Heath and the Dogon and Bangime  
Languages Project



(CC) BY © Jeff Heath and the Dogon and Bangime  
Languages Project

**Family: Bignoniaceae**

[Stereospermum kunthianum](#) Cham. .

- **bé:mbè** . "tree sp."



(CC) BY-NC © Bart Wursten



(CC) BY-NC © Bart Wursten



(CC) BY © Jeff Heath and the Dogon and Bangime  
Languages Project

### Family: Lamiaceae

[Vitex doniana](#) Sweet .

- **mórà** . "tree sp."



(CC) BY © Jeff Heath and the Dogon and Bangime  
Languages Project



(CC) BY-NC-SA © Research Institute Senckenberg



(CC) BY © Jeff Heath and the Dogon and Bangime  
Languages Project

### Family: Pedaliaceae

[Rogeria adenophylla](#) .

- **dwà:-gè sámbúrá** . "tall herb sp."



(CC) BY © Jeff Heath and the Dogon and Bangime  
Languages Project



(CC) BY © Jeff Heath and the Dogon and Bangime  
Languages Project



(CC) BY © Jeff Heath and the Dogon and Bangime  
Languages Project

**Order: Malvales**

**Family: Malvaceae**

**[Gossypium anomalum](#) .**

- àmpàrí kùrá:ndè . "cotton".



(CC) BY © Jeff Heath and the Dogon and Bangime  
Languages Project

**[Grewia bicolor](#) Juss. .**

- òwá ðīnī . "shrub sp".



(CC) BY © Jeff Heath and the Dogon and Bangime Languages Project



(CC) BY © Jeff Heath and the Dogon and Bangime Languages Project



(CC) BY © Jeff Heath and the Dogon and Bangime Languages Project

**Order: Myrtales**

**Family: Combretaceae**

[Anogeissus leiocarpa](#) (DC.) Guill. & Perr. .

- **sígèrĩ** . "tree sp."



(CC) BY © Jeff Heath and the Dogon and Bangime Languages Project



(CC) BY © Jeff Heath and the Dogon and Bangime Languages Project



(CC) BY © Jeff Heath and the Dogon and Bangime Languages Project

[Combretum glutinosum](#) Perr. ex DC. .

- **gújà** . "tree sp."



(CC) BY © Jeff Heath and the Dogon and Bangime  
Languages Project



(CC) BY © Jeff Heath and the Dogon and Bangime  
Languages Project



(CC) BY © Jeff Heath and the Dogon and Bangime  
Languages Project

***Combretum micranthum*** G. Don .

- **gùjá-kéri** . "shrub sp."



(CC) BY © Jeff Heath and the Dogon and Bangime  
Languages Project



(CC) BY © Jeff Heath and the Dogon and Bangime  
Languages Project



(CC) BY © Jeff Heath and the Dogon and Bangime  
Languages Project

***Guiera senegalensis*** J.F.Gmel. .

- **túró** . "shrub sp."



(CC) BY © Jeff Heath and the Dogon and Bangime  
Languages Project



(CC) BY © Jeff Heath and the Dogon and Bangime  
Languages Project



(CC) BY © Jeff Heath and the Dogon and Bangime  
Languages Project

**Order: Rosales**

**Family: Moraceae**

[Ficus abutilifolia](#) (Miq.) Miq. .

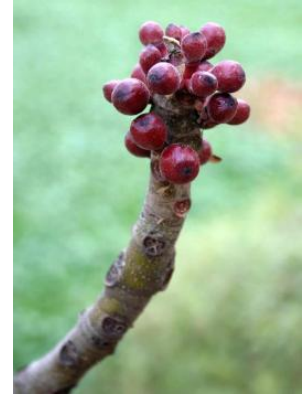
- **kòmbé gùrɔw**"gùrɔw" . "fig tree sp."



(CC) BY © Jeff Heath and the Dogon and Bangime Languages Project



(CC) BY © Jeff Heath and the Dogon and Bangime Languages Project



(CC) BY-NC © Bart Wursten

[Ficus platyphylla](#) Del. .

- **kómbé** . "fig tree sp."



(CC) BY © Jeff Heath and the Dogon and Bangime Languages Project



(CC) BY © Jeff Heath and the Dogon and Bangime Languages Project



(CC) BY © Jeff Heath and the Dogon and Bangime Languages Project

**Family: Rhamnaceae**

[Ziziphus mucronata](#) . Characteristics: 2 - 5 m tall, yellowish-green flowers, greyish-brown bark, thorns in pairs.

Biotope: river course, arid area. ([Carruthers \(eds.\) 2000](#): 263; [Van Rooyen et al. 2001](#): 34)

- **kùmàní tòm̀b̀ò** . "shrub sp. (false jujube)".



Public Domain by Christfried Naumann



(CC) BY-NC-SA © Research Institute Senckenberg



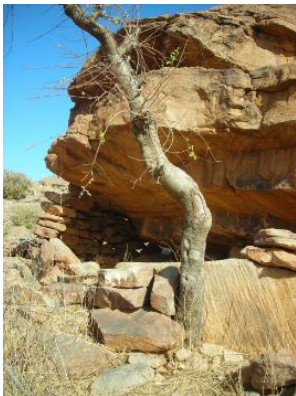
Public Domain by Gertrud Boden

**Order: Sapindales**

**Family: Burseraceae**

[Commiphora africana](#) (Rich.) Engl. .

- kùrà:rìyè . "bdellium (shrub)".



(CC) BY © Jeff Heath and the Dogon and Bangime Languages Project



(CC) BY © Jeff Heath and the Dogon and Bangime Languages Project



(CC) BY © Jeff Heath and the Dogon and Bangime Languages Project

**Order: Vitales**

**Family: Vitaceae**

[Ampelocissus africana](#) (Lour.) Merrill .

- kòdè gè sáná . "liana sp.". Lit. "hyrax wild.grape".





(CC) BY © Jeff Heath and the Dogon and Bangime  
Languages Project



(CC) BY © Jeff Heath and the Dogon and Bangime  
Languages Project



(CC) BY © Jeff Heath and the Dogon and Bangime  
Languages Project

**Class: other**

**Order: Fabales**

**Family: Fabaceae**

**[Senegalia ataxacantha](#) .**

- **gów"à** . "scrub acacia sp. (often liana)".



(CC) BY © Jeff Heath and the Dogon and Bangime  
Languages Project



(CC) BY © Jeff Heath and the Dogon and Bangime  
Languages Project



(CC) BY © Jeff Heath and the Dogon and Bangime  
Languages Project

**[Senegalia macrostachya](#) .**

- **péjégérè** . "acacia sp.".



(CC) BY © Jeff Heath and the Dogon and Bangime  
Languages Project



(CC) BY © Jeff Heath and the Dogon and Bangime  
Languages Project



(CC) BY © Jeff Heath and the Dogon and Bangime  
Languages Project

**Order: Solanales**

**Family: Solanaceae**

[\*Solanum mixed library\*](#) .

- kériyé . "African eggplant".

**Kingdom: other**

**Phylum: other**

**Class: other**

**Order: other**

**Family: other**

[\*Trachyderma hispida\*](#) .

- kéwé-kórò . "darkling beetle sp. in houses".



(CC) BY © Jeff Heath and the Dogon and Bangime

Languages Project