



College of Education  
UNIVERSITY OF HAWAII 'I AT MĀNOA



NUMBER 42 • 2020

# CURRENTS

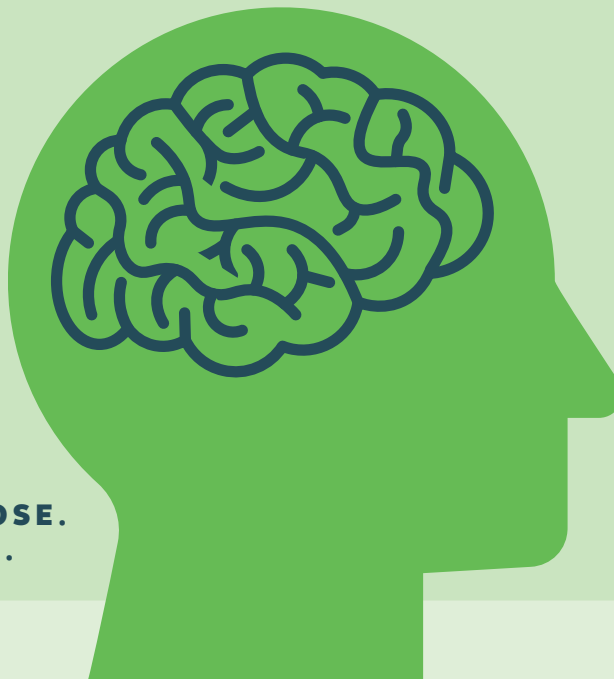


GETTING  
YOUR HEAD



**OUT**

OF THE  
GAME



**A SENSE OF PURPOSE.  
A SENSE OF PLACE.**



**College of Education**  
UNIVERSITY OF HAWAII'Ī AT MĀNOA

# CURRENTS

## DEAN'S OFFICE

---

*Currents* is published by the College of Education at the University of Hawai'i at Mānoa and distributed to faculty, staff, students, alumni, retirees, and friends of the college.

<https://coe.hawaii.edu>

- Nathan Murata, *Dean* . . . . . (808) 956-7703
- Amelia Jenkins, *Associate Dean for Academic Affairs*. . . . . (808) 956-7704
- Nezia Azmi, *Assistant to the Dean/International Programs* . . . . . (808) 956-4280
- Nancy Fujii, *Dean's Office Secretary*. . . . . (808) 956-7703
- Mark Fukeda, *Director of Development* . . . . . (808) 956-7988
- Paul McKimmy, *Director of Technology & Distance Programs* . . (808) 956-6266
- Jessica Miranda, *Director of Assessment, Accreditation, and Accountability* . . . . . (808) 956-6591
- Denise Nakaoka, *Director of Office of Student Academic Services*. . . . . (808) 956-4268
- Jennifer Parks, *Communications Coordinator* . . . . . (808) 956-0416
- Sheryl Tashima, *Chief Administrative Officer* . . . . . (808) 956-5776

## CURRENTS STAFF

---

- Jennifer Parks, *Editor*
- Aaron Lee, *Graphic Designer*
- Sydney Carey, *Production Coordinator*

## CHANGE OF ADDRESS

For a change of address, please notify the University of Hawai'i, College of Education, Communications Coordinator, 1776 University Avenue, EH 128, Honolulu, HI 96822. Email: [beaulieu@hawaii.edu](mailto:beaulieu@hawaii.edu)

## SUBMISSIONS

If you have a story idea or a comment, please write to University of Hawai'i, College of Education, Communications Coordinator, 1776 University Avenue, EH 128, Honolulu, HI 96822. Email: [beaulieu@hawaii.edu](mailto:beaulieu@hawaii.edu)

## GOING GREEN

---

Please support our green efforts by opting for an electronic version of COE Currents and the Annual Report if you have not already done so. Send an email to the communications coordinator at [beaulieu@hawaii.edu](mailto:beaulieu@hawaii.edu) and include your preferred email address as well as the mailing address where we have been sending you the magazine.

# CONTENTS

**04**  PROGRAMS & PROJECTS

**10**  FACULTY & STAFF

**16**  STUDENTS & ALUMNI

**24**  FEATURE

**26**  DONORS & FRIENDS

# Dean's Message

**W** This issue of *Currents* is a review of the College of Education's (COE) award-winning programs, faculty, staff, students, alumni, and friends. While the contents span 2019 activity, I am compelled to acknowledge that you are receiving this during the COVID-19 pandemic. The events of 2020 have been unprecedented as we have gone from a robust economic forecast to discussions of furloughs and massive unemployment. COVID-19 has undeniably altered the landscape of not only UH Mānoa, but the world. However, this should not diminish the accomplishments of the COE during 2019 and moving forward. As we navigate the global health crisis and its wake of economic uncertainties together, the COE remains steadfast in its commitment to producing quality future teachers, athletic trainers, exercise science majors, educational leaders and administrators, and rehabilitation counselors.

Our fully accredited college continues to evolve in every aspect of teaching, research, and service, not only for the state of Hawai'i, but for an ever-growing global market. The impact of the COE is also witnessed by its expansion of majors in all academic areas. We recently graduated the first cohort of students in the Ethnomathematics Graduate Certificate program, the first certificate program in the world for this highly interdisciplinary subject. We also began offering a new graduate online degree in Global Perspectives that connects a vibrant community of exceptional scholars from the continental North America, Hawai'i, and Asia. The COE has 24 international partners and is considered a premier

destination for international scholars conducting research in education.

The Be a Hero. Be a Teacher. campaign, in partnership with the Hawai'i Department of Education (HIDOE) and UH System, continues to showcase our teacher recruitment efforts. Through the generous support of Senator Michelle Kidani and the HIDOE, the Grow Our Own initiative allows for tuition-free teacher recruitment. After two years of working on our Strategic Plan, four key principles emerged: Hawaiian Place of Teaching and Learning; Collaboration, Partnerships, and Community; Innovate and Inspire; and Research to Improve Educational Outcomes. The strategic plan is the direct outgrowth of COE faculty who put in the hours and effort to truly call the plan their own. We are looking forward to its full implementation in the fall.

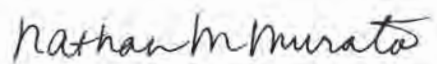
Our new modular structures have been built and are in full use. With new science and art labs, our students can finally reap the benefits of learning in a high quality teaching environment. Each module was thoughtfully assigned a Hawaiian name in honor of the college's commitment to being a Hawaiian Place of Learning and Teaching.

The COE produces high quality graduates who are the recipients of local, national, and international awards. Our faculty and staff are continuously exploring ways to enrich

the teaching and learning experiences with new and innovative ideas and strategies. They demonstrate a passion for excellence as witnessed by their numerous awards, the amount of external funding obtained, and the high honors achieved in their respective professional organizations.

Looking forward, the COE has submitted an Authorization to Plan for both the Doctor of Physical Therapy and School Counseling programs. The fiscal outlook may appear bleak at the moment, but we are determined to press on in areas of growth and innovation. We will emerge from this crisis stronger and more efficient in the way teaching, learning, and research occurs. I expect the COE to be a major player in the post-pandemic rebuilding, and I thank each and every one of you for your ongoing support and contributions.

With aloha,



Nathan M. Murata - Dean



**DEAN NATHAN M. MURATA**

# Did you know?

**25+**  
DEGREES /  
CERTIFICATES

## IN A YEAR, THE COLLEGE OF EDUCATION...

- Produces the majority of the state's teachers, educational leaders, and educational researchers
- Enrolls nearly 2,000 students
- Awards approximately 600 degrees
- Employs 350+ faculty, staff, and support personnel
- Attracts approximately \$19 million in contracts and grants
- Receives more than \$1 million from alumni and friends
- Awards approximately \$400,000 in scholarships to students with the average award at \$1,650

## THE COLLEGE OF EDUCATION ALSO...

- Consistently ranks among the top graduate schools in education in U.S. News & World Report
- Maintains nationally accredited teacher education, athletic training, and rehabilitation counseling programs
- Offers 3 bachelor, 10 master, and 4 doctoral degrees as well as post-baccalaureate and graduate certificate programs in a variety of fields
- Provides programs through distance (online and/or hybrid) education, especially for neighbor island students, through targeted statewide cohort programs
- Serves the needs of Hawai'i through teacher preparation, exercise science, athletic training, and research programs
- Houses 8 academic and 2 major research units, the Center on Disability Studies (CDS) and the Curriculum Research & Development Group (CRDG)



# Programs & Projects

## Being the Best



The COE has one of the best graduate schools in the nation. Ranking 66 out of 258 schools in U.S. News and World Report's *Best Graduate Schools* 2020 edition, the college has been among the top 100 education programs surveyed since 2005. Having been awarded approximately \$17 million in contracts and grants in 2019, the college also remains at the top for funded research. Nationally accredited since 2000, the college receives international recognition and awards for all of its programs throughout the year. The Master of Education in Teaching (MEdT) program was rated best master's degree in secondary education and best full-time program by *Online Masters*. The Learning Design and Technology (LTEC) department was listed as one of the best online master's in educational technology programs in the same publication.

## Kicking Off Neighbor Island Alumni Tour



The COE, together with the College of Education Alumni Association (COEAA), held a *Neighbor Island Alumni Reception* on Maui in April 2019. The event included a short program, refreshments, and giveaways. "The COE is Statewide, which means so much more than offering online or hybrid courses," said Dean Murata. "We want to show our appreciation to all of our amazing alumni, retired teachers, current teachers, and even those considering a career in education. Regardless of where you learn or live, we are one, and we are coming to you!" As part of an appreciation and recruitment effort, the COE plans to visit at least one island each semester.



## Improving Head Safety in High School Football

The COE launched a three-year program to reduce head impact exposure in Hawai'i high school football players and to enhance community awareness and environment for head safety. The *HuTT®808* program, in partnership with the University of Massachusetts Lowell and funded by the GOG Foundation, is a collaboration with the COE Hawai'i Concussion Awareness Program (HCAMP). Beginning with Pac-Five and St. Louis School football teams, each football player is outfitted with a specially designed helmet, which houses an impact-monitoring system that transmits data to UH graduate assistants who then notify

team athletic trainers to assess for possible concussion. Dean Nathan M. Murata said, "Once the outcomes of our program have shown a reduction in head impact exposure and concussions as well as improved head safety behaviors with our inaugural groups, the program will continue to work towards sustained implementation and wider acceptance in grade levels and schools across Hawai'i." Set up by its founder, Attorney Gary O. Galher, the GOG Foundation supports projects designed to improve Hawai'i's social, economic, and cultural well-being.

## Preserving and Promoting Olelo Kanaka

College of Education (COE) alumni, COE Assistant Specialist Kahea Faria and Kawaihuelani Center for Hawaiian Language Director Ipo Wong, are working on

several program initiatives designed to preserve and promote 'ōlelo Kanaka, the Hawaiian language of native speakers. Programs, including those centered around ohana and malama 'āina, will immerse UH students in language intensive lessons. "In 'ōlelo Kanaka, letters, sounds, intonations, expressions and world views are noticeably different than language taught today," Faria said in a UH News story. "There is nowhere else in the world where the Hawaiian language is so richly preserved, and we want to be sure it's never lost." As part of the initiative, they are recruiting potential teacher candidates from within the native speaking population in order to produce teachers who are not only certified but who are also able to communicate with students and families in the language of the community.



## Teaching Swim Safety to Children with Autism



COE students in the Kinesiology and Rehabilitation Program (KRS), enrolled in Professor Kelle Murphy's *KRS 443 Diversity and Disability* course, teach swimming skills and safety to children with Autism Spectrum Disorder (ASD).

Part of a 10-week laboratory section, the program has expanded from 12 to nearly 50 participants since 2017 and is now a required section of the adapted physical education class. Featured in UH News and on all local news stations, the inspirational program has gained the attention of the media and community. "It has been rewarding to see the improvement in both swimming skills, comfort level, and social skills of children with ASD along with the excitement of the UH students when their child progresses, and they realize that they are a part of the process," Murphy said.



## Introducing Students to College

Institute for Teacher Education (ITE) Elementary faculty members and OSAS partnered with Ala Wai Elementary School to bring 60 fourth graders to UH Mānoa for a day of college awareness and readiness. The event, called *Ho'ohana*, (to work with intent and purpose, the practice of new knowledge), was also designed to help COE elementary education candidates practice various STEM challenges. Science, Math, and STEM Methods Instructor Stacy George said, "This provided

our college students with an opportunity to demonstrate practical applications of math and science and to showcase leadership skills." The Ala Wai students were encouraged to think about college and future careers by engaging in activities, which included a read aloud of *Emma's Adventure*, written by OSAS Advisor Alyssa Kapaona. After discussing their passions in life, the children were given a college campus tour to help them imagine a pathway to their career goals. "The *Ho'ohana* program aims to support STEM, first generation college-goers, and college readiness for elementary students," added ITE Assistant Specialist Rayna Fujii.



## Contributing to the Advising Community

The COE Office of Student Academic Services (OSAS) was awarded the *'Oikela Outstanding Academic Advising Unit Award* during a UH Mānoa Awards Ceremony in April 2019. OSAS was selected for its excellence, innovation, and significant contributions to the advising community by the Council of Academic Advisors. "I am extremely proud of our faculty, staff, and students," said OSAS Director Denise Nakaoka. "They are most deserving of this award since they have consistently demonstrated a high level of excellence in their delivery of services to students, program development, and work ethic. They inspire me every day." OSAS received more than \$11K in grants to support underrepresented student activities and events in 2019.



## Making History in the Marshall Islands

The first cohort of the college's PACMED program graduated in the Republic of the Marshall Islands (RMI) on July 26, 2019. PACMED is a Master of Education (MED) degree program in the Department of Curriculum Studies (EDCS) with a focus on culturally-responsive, Pacific, place-based STEAM subjects (science, technology, engineering, arts, and mathematics). EDCS Professors Paul Deering and Deborah Zuercher and colleagues digitally deliver PACMED's curriculum to students across the Hawaiian Islands, American Sāmoa, and now RMI. The recently graduated cohort of 17 Marshallese students included classroom teachers as well as high-ranking administrators. "Pacific leaders are needed to solve Pacific problems," Zuercher said. "The PACMED program builds on indigenous knowledge of place and culture while addressing emerging problems such as sea-level rising, health, illegal fishing, food security, and sovereignty." PACMED is a two-year program focused on the nine RMI Public School Standards for Teachers, plus a tenth standard focused on place-based STEAM teaching.



## Growing Teachers Initiative Program

The COE *Grow Our Own Teachers Initiative* received 53 applicants in 2019, nearly doubling the number of interested students since the first cohort began in January 2018. Scholarship stipends for qualified applicants are provided through support from the State Legislature and the Hawai'i Department of Education (HIDOE). *Grow Our Own* was designed for HIDOE employees who are already teaching and who serve as emergency hires, substitute teachers, or educational assistants. The main focus is to address

teacher shortage areas in Hawaiian Language, world languages, English, mathematics, and science. The application process is rigorous in order to ensure candidates match these goals. "The near doubling of applicants for this program is a testament to the outstanding things we can accomplish when we work together," said HIDOE Assistant Superintendent Cynthia Covell. "We look forward to continuing our innovative approach to teacher retention and recruitment as we continue to fill our classrooms with homegrown talent."



## Rehabilitating Cancer Patients

The COE Department of Kinesiology and Rehabilitation Science (KRS) has expanded its *Practicum in Health and Science* (KRS 488) clinical experiences. Under the direction of Assistant Professor Paulette M. Yamada, students enrolled in the 4-credit class work with cancer patients at the REHAB Hospital of the Pacific in their iCARE cancer exercise rehabilitation program. Featured in multiple local news segments, iCARE student trainers work with cancer patients as part of a recovery treatment program. Every semester, 20 students enrolled

in KRS 488 are assigned two patients each. The program is free for the cancer patients who meet with the student trainers three times a week over three months. “The iCARE program gives our students an opportunity to apply classroom-based knowledge into a clinical setting,” Yamada explained. “We are building collaborations and have several oncologists working with us. Together, we are learning how to help the patients to continue exercise beyond the three-month program.”



## Preparing Vocational Rehabilitation Counselors

The Rehabilitation Counselor Education Program (RCEP) in KRS was awarded a \$1M long-term training grant from the U.S. Department of Education Rehabilitation Services Administration. Funding for the project, *Pursuing Excellence in Rehabilitation Counseling*, will provide tuition assistance for 30 eligible RCEP students. “Because of severe shortages of professionals in the State-Federal Vocational Rehabilitation system, the need for highly qualified rehabilitation professionals who can serve adults and youths with disabilities and challenges is high,” said Dr. Kathryn K. Yamamoto, Associate Professor and RCEP Director. The RCEP program prepares graduate students to become successful practitioners in the field of vocational rehabilitation and leads to a Master of Science (MS) degree in KRS with a specialization in Rehabilitation Counseling.



## Training Doctoral Students in Special Education

The college’s Department of Special Education (SPED) received a \$300K grant from the U.S. Department of Education Office of Special Education Programs. As part of the grant program, SPED is participating in a *Doctoral Training Consortia* along with nine other institutions of higher education (IHE) across the U.S. Under the direction of SPED Chair Mary Jo Noonan, PhD scholars will engage in advanced research, education, and community opportunities

through the consortia, benefiting from the expertise and experience of interdisciplinary faculty and projects from all 10 IHEs. “This funding will enable us to train doctoral students in early childhood intervention for infants and young children with high-intensity needs because of significant intellectual and developmental disabilities, including those with severe autism, medically complex needs, sensory loss, and genetic conditions,” Noonan said.

# Faculty & Staff

## Honors & Recognition

The COE Senate Fellowship Committee issues a call for faculty and staff award nominations each spring. Four individuals were recognized in May 2019.



### INNOVATION AND TRANSFORMATION AWARD

Recognizes creative contributions that lead to transformations in college infrastructure, faculty/staff/students, or programs and that promote education, diversity, justice, or democracy

#### **Faye Furutomo**

*Program Manager, Technology and Distance Programs*

“

Faye has been instrumental in meeting the COE's needs in the effective design and development of online modules, courses, and programs. She has successfully guided TDP and faculty teams to create program and resource sites that especially benefit our students. Her forward-thinking approaches, management, coordination, and design expertise are common denominators in these successful COE assets.

”



**EXCEPTIONAL STAFF SERVICE AWARD**

Recognizes a staff member (e.g. fiscal, secretarial, clerical, custodial, grounds - includes APTs and RCUH) whose contributions promote an efficient, professional, and positive college environment and who demonstrates excellence in his/her area of responsibility

**Marsha Ninomiya**  
*Administrative Assistant, Department of Educational Foundations*

“

Marsha wears many hats in the college, including EDEF secretary, college-wide PhD program assistant, and EdD program assistant. She is one of the most knowledgeable, positive, and caring administrative staff members whose consistently cheerful and clear guidance encourages community between students and the college. Always positive and willing to help, Marsha ensures that students are informed of activities, positions, and scholarships.

”



**LEADERSHIP SERVICE AWARD**

Recognizes exceptional leadership, through commitment and contributions to the college and/or community, which moves education in positive directions

**Vail Matsumoto**  
*Assistant Professor, Institute for Teacher Education*

“

When I think about Dr. Vail Matsumoto, I think of Theodore Roosevelt’s words, ‘Speak softly and carry a big stick.’ Although she is a quiet leader who speaks few words, her actions to build and empower educators have and continue to leave a positive impact upon education. She spends countless hours working with schools to ensure candidates are part of a rich learning environment and are afforded opportunities to continue their growth as an educator.

”



**LEADERSHIP SERVICE AWARD**

Recognizes exceptional leadership, through commitment and contributions to the college and/or community, which moves education in positive directions

**Denise Nakaoka**  
*Director, Office of Student Academic Services*

“

Denise stepped up to lead our office after the unexpected passing of our former director, Niki Libarios, in 2017. Despite having to deal with the grief and shock the office was dealing with, she admirably maintained her composure and strength to ensure the rest of the faculty and staff in OSAS were okay and able to provide our normal services while continuing the great work and leadership Niki instilled.

”



## National Postdoctoral Fellow

Assistant Professor **Derek Taira**, in the Department of Educational Foundations (EDEF), was selected as a 2019 National Academy of Education Spencer Postdoctoral Fellow. Taira's work is an extension of his research project, *Forward Without Fear: Native Hawaiians Contesting Americanization in Territorial Hawaii's Public Schools, 1900-1941*, for which he was awarded a Spencer Foundation grant in 2018. "My project attempts to bridge the relatively small scholarship on schooling in the late 19th century with the rapidly developing, more robust scholarship on late 20th century Native Hawaiian schooling," Taira explained. "This fellowship is an exciting opportunity that will not only help me produce a manuscript, but also highlight the depth and complexity of Hawaii's history during the territorial period."



## Hubert Everly Endowed Scholar

Associate Specialist **Ariana Eichelberger**, in the Learning Design and Technology department, is the 2019–2020 *Hubert V. Everly Endowed Scholar in Education*\*. She will receive \$10,000 over two semesters to support the development of a "plug-and-play" tool to help educators make online open educational resources (OER) more engaging for their students. Eichelberger was selected based on the quality, uniqueness, and potential impact of her proposed program. The "plug and play" tool will allow educators to customize OER textbooks by adding interactive assessments to enhance student retention, engagement, and accountability. "Receiving this award is so exciting for me," Eichelberger said. "My hope is that, together with the college's Distance Course Design & Consulting (DCDC), we can build and research something that will be truly useful."



\*Dean Hubert V. Everly was Dean of Teacher's College in 1956 until it became the College of Education where he was the longest serving dean (1959–1979). Among his numerous honors, Everly received the endowed scholar position, which was established in his name, and a COE Lifetime Achievement Award. The endowment supports the career of faculty members whose work will result in a positive impact on the college and on education throughout Hawai'i.



### Frederick Bail

passed away on January 17, 2019 at the age of 74. He joined the College of Education (COE) as an educational researcher in 1969, having received his PhD in Educational Psychology from Cornell University. A beloved faculty member in the COE Department of Educational Psychology (EDEP), his students nominated him as the best teacher for which he won the university's *Excellence in Teaching* award. He is credited with making measurement and statistics more student-friendly and for introducing more humanistic and experiential courses to the curriculum. Outside of the classroom, he cherished his relationships with friends and family, sharing his love of music, photography, and the ocean with all. After serving as the EDEP department and graduate chair on and off during his tenure, he retired as professor emeritus in 2012.



### Mitsuo Adachi

passed away on January 30, 2019 at the age of 93. Born in Pāpa'aloa, Hawai'i, he was a teacher and principal on Hawai'i Island and O'ahu for years before becoming a District Curriculum Specialist for the Hawai'i Department of Education. He joined the COE in 1970, serving as chair of the COE Department of Educational Administration for several years before retiring as professor emeritus in 1992. A Military Intelligence Service (MIS) veteran, he was also an Association for Supervision and Curriculum Development (ASCD) board member and Head Sensei 7th Dan at the Mānoa Aikido Club. The *Mitsuo Adachi Scholarship Fund* was established to assist students in the educational administration program.



### Charles Araki

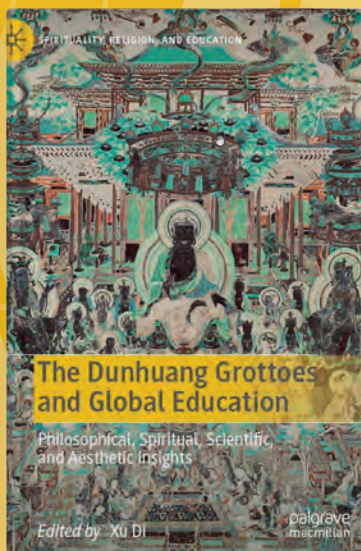
passed away on May 24, 2019 at the age of 85. He was not only an alumnus of the COE, but he served as a professor, interim dean (1995–1998), and professor emeritus. Under Araki's leadership, the college strengthened its commitment to training teachers and began its pursuit of national accreditation. He submitted the original proposal to the National Council for Accreditation of Teacher Education (NCATE), paving the way for his successors and the college's future. A strong supporter of UH Athletics, Araki was a founding member and the second president of the Letterwinners Club. He was himself a letterman from 1952–1956 in football and track. He remained active in the COE Alumni Association as well as the Dean's Advisory Council until his death.



### Peter Dunn-Rankin

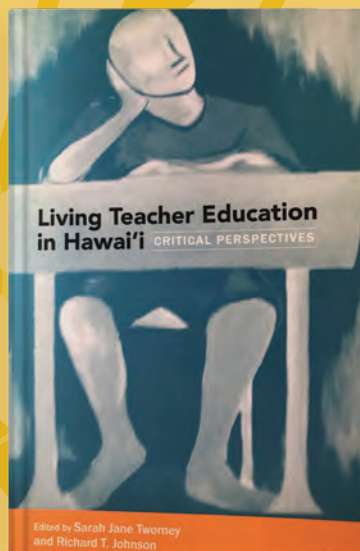
passed away on November 16, 2019 at the age of 90. With the COE for 30 years, he served as Associate Dean for Graduate Studies and Instructional Research, acting dean, and chair of the Department of Educational Psychology (EDEP) until his retirement in 1995. He remained active in research beyond his university career. Much of his research focused on the elements of successful reading practices and the benefits of reading to children at an early age, which led to the establishment of the Eye Tracker Laboratory at UH Mānoa. He was also instrumental in the creation of the Hawai'i Educational Research Association. A world record setting fisherman, his handmade lures greatly influenced the design of surface lures used today. He and his wife, Patricia Ann, established the *The Peter & Patricia Dunn-Rankin Scholarship Fund* to support scholars in educational psychology and research.

# Selected Publications



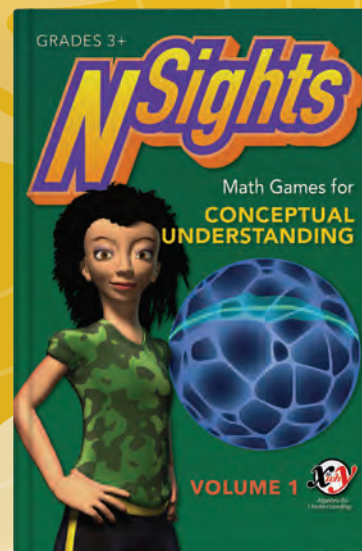
## *Dunhuang Grottoes & Global Education: Philosophical, Spiritual, Scientific, and Aesthetic Insights,*

written by Department of Educational Foundations Professor and Graduate Chair **XU DI** (许笛), is a unique and multidisciplinary book that integrates the Dunhuang Study with global education. It studies the emergence and development of Dunhuang's education in the context of the fusion of four civilizations (Indian, Chinese, Islamic, and Christian) and the interactions of multiple cultures and nations over a thousand years. Based on the artifacts, the book makes a strong and clear case that fundamentally Dunhuang, its roots and significance, first and foremost, are education. The book examines Dunhuang through historical, philosophical, scientific, and aesthetic lenses. More importantly, it discusses the insights Dunhuang provides for contemporary education in terms of ethics, moral education, self-cultivation, multicultural education, STEM education, art and music education, basic education, naturalistic education, and life-long learning. The book emphasizes the human shared essence, connection, and purposes as the core and driving force of education and life.



## *Living Teacher Education in Hawai'i: Critical Perspectives,*

co-edited by Department of Curriculum Studies Professor **Richard T. Johnson** and St. Mary's University Professor and Dean of Education Sarah Jane Twomey, works across diverse research boundaries, critically analyzing current teacher education practices in Hawai'i from local and global perspectives. The creative personalized stories shared here engage the teacher in a multitude of educational interactions as they offer a fresh perspective on how teachers and teacher educators make sense of their personal and practical experiences through critical lenses. The authors present vivid cases of their own daily classroom and school-wide experiences as they offer real-life examples that explore and critique current issues in teacher education, including culture-based education; auto-ethnographic methods for studying the self; culturally and linguistically diverse students; performative inquiry of becoming a teacher; women as leaders in education; and drama-driven storytelling as lived curriculum. These authors challenge the historical and current conventions of teacher education and reveal that critically engaging these practices can be personally rewarding and that critical engagement and lively writing do not have to be mutually exclusive.



## *NSights Math Games for Conceptual Understanding,*

co-authored by the Curriculum Research & Development Group's Director **Barbara J. Dougherty**, Associate Director **Linda Venenciano**, and Junior Specialist **Fay Zenigami**, as well as University Laboratory School Mathematics Teacher Cynthia Twibell, the book is a great resource for educators to use with any mathematics curriculum. There are 11 math games that support students in upper elementary grades and higher as they acquire a deeper understanding of number relationships and problem-solving strategies. Each game is classroom tested by students and teachers and user-friendly for educators who can match the game's mathematical ideas and complexity to the levels of their students. The learning outcomes for each game are closely aligned to target concepts and skills for late elementary through high school.

## BOOKS

*Introduction to Multilevel Modeling.* Heck | EDEA

*Nsights: Math Games for Conceptual Understanding.* Dougherty, Zenigami, Venenciano, & Twibell | CRDG

*Dunhuang Grottoes and Global Education: Philosophical, Spiritual, Scientific, and Aesthetic Insights.* Di | Educational Foundations

*Living Teacher Education in Hawai'i: Critical Perspectives.* Johnson | CS

*Universal Design for Learning (UDL) for Language Learners.* Torres & Rao | SPED

*Educational Privatization in Latin America, Africa, and Asia: The Dialectics of Global-Local Dynamics.* Edwards | EDEF

*Putting Essential Understandings into Practice: Number and Numeration PK-2.* Dougherty | CRDG

*Introduction to Research in Education.* Ary, Jacobs, Irvine, & Walker | LTEC

## BOOK CHAPTERS

*Evaluating CSPAPs: Measuring Implementation and Impact in Comprehensive School Physical Activity Programs.* Centeio & McCaughtry | KRS

*Education Through Paideia: The Contested Space of Indigenous Schooling in Indigenous education: New directions in Theory and Practice.* Maaka | EDCS

*Indigenous Leadership: A Complex Consideration in Handbook of Indigenous Education.* Maaka, Wong, Perry, & Johnston | EDCS

*Leadership Within Higher Education: Social Reproduction and Tensions in Producing Innovation in Encyclopedia of Educational Innovation.* Lucas | EDEA

*The Canoe is the Compass in Detours: A Decolonial Guide to Hawai'i.* Furuto | EDCS

*The Good Thinker's Tool Kit: Engaging Critical Thinking and Reasoning in Secondary Education in Critical Thinking and Reasoning: Current Research, Theories, and Practice.* Makaiau | ITE

*West Meets East: The Interplay of Unity and Diversity—The Relevance of Dunhuang for Education and Life Today in Dunhuang Grottoes and Global Education: Philosophical, Spiritual, Scientific, and Aesthetic Insights.* Di | EDEF

*Foreword in Living Teacher Education in Hawai'i: Critical Perspectives.* Tavares | EDEF

*Instructional Design with UDL: Addressing Learner Variability in College Courses in Transforming Higher Education Through Universal Design for Learning: An International Perspective.* Rao | SPED

*Possible Stories and Memories of Children: An Autoethnography in Living Teacher Education in Hawai'i: Critical perspectives.* Au | ITE

*Teachers as Models of Internet Use in Emerging Trends in Cyber Ethics and Distance Education.* Nguyen | CRDG

*Cyberbullying, Sexting, and Online Sharing: A Comparison of Parent and School Faculty Perspectives in Internet and Technology Addiction: Breakthroughs in Research and Practice.* Nguyen & Mark | CRDG

*Engaging Indigenous Students in Student Engagement in Higher Education: Theoretical Perspectives and Practical Approaches for Diverse Populations.* Wright & Shotton | EDEA

*Afterward in Living Teacher Education in Hawai'i: Critical Perspectives.* Johnson | EDCS

*Advocating for CSPAPs in Comprehensive School Physical Activity Programs.* Erwin & Centeio | KRS

## CONFERENCE PROCEEDINGS

*College faculty's beliefs about teaching online: To teach or not to teach? at Ed-Media 2019 World Conference on Multimedia, Hypermedia & Telecommunications.* Eichelberger & Leong | LTEC

*Integrating ecological perspectives into practice for graduate student educators and other professionals at NASPA Western Regional Conference.* Lucas, Hua, Higa, & Anthony | EDEA

*Co-constructing bridges with the community at NASPA Western Regional Conference.* Lucas | EDEA

*Data Structures in Multilevel Modeling at NASPA Western Regional Conference.* Heck | EDEA

*Development and Evaluation of Game development-based E-Learning Module at PC Conference 2019.* Togashi | TDP

*Sexting and personality traits in adolescents and young adults: a cross-cultural study at XXXII Congresso Nazionale AIP - Sezione di Psicologia dello Sviluppo e dell'Educazione.* Morelli et al. | CRDG

*Re-using video records of practice in teacher professional development to engage in and develop mathematics teaching practice at Society for Information Technology & Teacher Education International Conference 2019.* Suzuka, Frank, & Yakel | CRDG

*Keynote: Plenary Learning: Harnessing Technology to Support Independence and Interdependence to Maximize Learning for All at IAFOR Asian Conference on Education.* Menchaca | LTEC

*Birds of a Feather: Locating Creative Commons and OER Resources at Proceedings of the 42<sup>nd</sup> Annual Association of Education and Communications Technologies Conference.* Menchaca & Irvine | LTEC

## JOURNAL ARTICLES

*Effects of Workshop Trainings on Practice Element Utilization Among Therapists in a Youth Public Mental Health System in Evidence-Based Practice in Child and Adolescent Mental Health.* McLennan, Mueller, Heck, & Nakamura | EDEA

*Using TPACK as a framework to study the influence of college faculty's beliefs on online teaching in Educational Media International.* Eichelberger & Leong | LTEC

*Transforming faculty communication and envisioning the future with design thinking in TechTrends.* Lin & Eichelberger | LTEC

*Listening in a teacher education cohort in Academic Exchange Quarterly.* Robinson | ITE

*Alternative Teacher Preparation Programs: Examination Through a Marketing Lens in Rural Special Education Quarterly.* Kim, Tarnay, & Wells | SPED

*College students' attitudes toward ICT use for English learning in International Journal of Education and Development using ICT.* Ngo & Eichelberger | LTEC

*"What am I doing to be a good ancestor?" An Indigenous phenomenology of giving back among Native college graduates in American Educational Research Journal.* Reyes | EDEA

*Motivating Programming Learners through Game Development in University of Hawai'i at Mānoa - ScholarSpace.* Togashi | LTEC

*(In)Visible Literacies: Investigating the Literacy Practices of Newcomer Transnational Students in a Secondary English Classroom in Global Education Review.* Taira | EDCS

*Supporting the development of early algebraic thinking, an alternative approach to number in Investigations in Mathematics Learning.* Venenciano, Yagi, Zenigami, & Dougherty | CRDG

*Harnessing students' misconceptions and fragile understandings in Mathematics Teacher.* Suzuka & Venenciano | CRDG

*Hūlili Multidisciplinary Research on Hawaiian Well-Being in No Ka Pono o ka Lāhui.* Goodyear-Ka'ōpua & Wright | EDEA

*Where are they now? Graduates of an arts integration elementary school reflect on art, school, self and others in International Journal for Education and the Arts.* Simpson Steele | ITE

*Pono Choices: Lessons for School Leaders From the Evaluation of a Teen Pregnancy Prevention Program in Journal of School Health.* Manaseri, Roberts, Toms Barker, & Tom | CDS

*The invasive green algae *Avrainvillea* sp. transforms native epifauna and algal communities on a tropical hard substrate reef in Phycological Research.* Foster, Spalding, Cox, La Valle, & Philippoff | CRDG

*The microscopic world of plankton: Exploring aquatic food webs and marine ecosystem processes in Science Scope.* Faucci, Philippoff, & Veresan | CRDG

*Recommendations for a National Research Agenda in UDL: Outcomes From the UDL-IRN Preconference on Research in Journal of Disability Policy Studies.* Smith et al. | SPED

*Technology tools for the inclusive classroom: Using Google Chrome to support all learners in Journal of Special Education Technology.* Ok & Rao | SPED

*Embodying Haumea: Wāhine Scholars Cultivating Kanaka Independence/its in the Academy in International Journal of Qualitative Studies in Education.* Reyes, Wright, Goodyear-Ka'ōpua, & Oliveira | EDEA

*Auditory rhyme processing in expert freestyle rap lyricists and novices: An ERP study in Neuropsychologia.* Cross & Fujjoka | EDCS

*Reader's Rebellion in Journal of Curriculum and Pedagogy.* Au et al. | ITE

*Globalization, privatization, and marginalization: Assessing connections and consequences in/through education in Education Policy Analysis Archives.* Edwards & Means | EDEF

*Shifting the perspective on community-based management of education: From systems theory to social capital and community empowerment in International Journal of Educational Development.* Edwards | EDEF

*People with physical disability in Serbia: Relationship between internalized stigma, experienced and anticipated discrimination, and empowerment in Scandinavian Journal of Psychology.* Milacic-Vidojevic, Colic, Toskovic, & Dragojevic | SPED

*Technical Adequacy of Procedural an Conceptual Algebra Screening Measures in High School Algebra in Assessment for Effective Intervention.* Genareo et al. | CRDG

*13 Rules That Expire in Teaching Children Mathematics.* Karp, Bush, & Dougherty | CRDG

*The Handmaid's Tale: Using Literature and Online Journaling to Facilitate a Self-Study of Feminist Identity in an International Research Collective in Studying Teacher Education.* Makaiau, Ragoonaden, Leng, Mangram, & Toyoda | ITE

*Seeking pedagogical equilibrium while teaching synchronous online classes: A collaborative self-study in Action In Teacher Education.* Frambaugh-Kritzer & Stolle | ITE

*Investigating critical friendship: Peeling back the layers in Studying Teacher Education.* Stolle, Frambaugh-Kritzer, Freese, & Persson | ITE

*Culturally responsive health education in the Pacific: Social lessons learned in American Samoa in The International Journal of Health, Wellness, and Society.* Serna & Zuercher | ITE

## JOURNAL ARTICLES CONT.

*Five tips to engage multilingual children in conversation* in Young Children. Chapman De Sousa | ITE

*An analysis of instruction expenditures and public high school completion on Hawai'i's Big Island* in The Journal of American Academy of Business, Cambridge. Ng | EDCS

*Here or There Instruction: Lessons Learned in Implementing Innovative Approaches to Blended Synchronous Learning* in Tech Trends. Zydney, McKimmy, Lindberg, & Schmidt | LTEC

*An easy mark: Characters in YAL with autism and their messages* in Middle School Journal. Matsumoto & Black | ITE

*The struggle is real: Advocacy, activism, and agency in young adult protagonists with autism* in Children and Teenagers. Matsumoto & Black | ITE

*Reclaiming, sustaining and revitalizing Hawaiian Education through video-cued makawalu ethnography* in Anthropology & Education Quarterly. Kaomea, Alavrez, & Pittman | EDCS

*Parental experiences raising children with autism spectrum disorder in Eastern Europe: a scoping review* in International Journal of Developmental Disabilities. Čolić, Dababnah, Garbarino, & Betz | SPED

*Sociocultural Adaptation of "Parachute Kids" from Mainland China* in British Journal of Guidance and Counselling. Cheng | EDEA

*An ecological approach to understanding academic achievement: Considering intrapersonal, physical activity, and support variables* in Journal of Early Adolescence. Centeio et al. | KRS

*Dietary self-efficacy and dietary intake by race/ethnicity among elementary school children* in Health Education Journal. Kulik et al. | KRS

*Knowledge, Attitudes, Self-Efficacy and Healthy Eating Behavior Among Children: Results from the Building Healthy Communities Trial* in Health Education and Behavior. Kulik et al. | KRS

## MULTIMEDIA CONTRIBUTION

*Getting Started with R for Survey Analysis*. Harrison | CRDG

*Culturally Responsive Assessment Practices through Nā Hopena A'o*. Taira | EDCS

*Our Project In Hawai'i's Intertidal*. Philippoff & Nichols | CRDG

## RESEARCH/EVALUATION REPORTS

*Meta-Evaluation of the Comprehensive Needs Assessment to Inform the State of Hawai'i's Application for Perkins V Funding*. Harrison | CRDG

*Pono Choices: A Culturally Responsive Teen Pregnancy and STI Prevention Program*. Tom | CDS

*Bringing Visibility to the Needs and Interests of Indigenous Students in Higher Education: Implications for Research, Policy, and Practice*. Reyes & Shotton | EDEA

*The Humanistic Mentoring of Roland G. Tharp*. Yamauchi | EDEP

*How Place-Based Science Education Strategies Can Support Equity for Students, Teachers, and Communities*. Coleman, Chinn, Morrison, & Kaupp | EDSCS

*Comprehensive Needs Assessment to Inform the State of Hawai'i's Application for Perkins V Funding*. Harrison, Suzuka, & Goto | CRDG

## PRESENTATIONS

*Lessons in Combining Discrete and Continuous Assessment Data: Activity Trackers, Standardized Tests and Test Anxiety* at Association for Educational Communications & Technology (AECT) International Convention. Hoffman, Santolucito, Hwang, & Paek | LTEC

*Using a Simulated World to Engage Students in Social Studies* at Association for Educational Communications & Technology (AECT) International Convention. Hoffman & Paek | LTEC

*Promoting Diversity in Computer Science Education. "Birds of a Feather"* at Association for Educational Communications & Technology (AECT) International Convention. Hoffman | LTEC

*Redesigning an open textbook to record and display student activity* at Association for Educational Communications & Technology (AECT) International Convention. Eichelberger | LTEC

*Reacting to HOT instruction: Faculty and student perceptions of a blended synchronous teacher preparation program* at Association for Educational Communications & Technology (AECT) International Convention. Eichelberger & McKimmy | LTEC

*Design thinking applied: Faculty communications and strategic planning* at Association for Educational Communications & Technology (AECT) International Convention. Lin & Eichelberger | LTEC

*College faculty's beliefs about teaching online: To teach or not to teach?* at Ed-Media 2019 World Conference on Multimedia, Hypermedia & Telecommunications. Eichelberger & Leong | LTEC

*A case study on applying design thinking in faculty communications and strategic planning* at Ed-Media 2019 World Conference on Multimedia, Hypermedia & Telecommunications. Lin & Eichelberger | LTEC

*Naming the Moment, Plenary Presentation* at 9th Annual International Conference on Education and Social Justice. Wright | EDEA

*Savage Discourses: Case Studies of 'Free Speech' Microaggressions Against Native Hawaiians* at Annual Meeting of the Native American and Indigenous Studies Association. Wright | EDEA

*Think different! A card game to inspire creativity and foster multiple perspectives* at Ed-Media 2019 World Conference on Multimedia, Hypermedia & Telecommunications. Lin & Eichelberger | LTEC

*Flipping the book on Biology: Developing an interactive, open, online textbook to flip a large, lecture-based university course* at Teaching, Colleges & Community (TCC) International Online Conference. Eichelberger | LTEC

*Embodying Haumea: Wāhine Scholars Cultivating Kanaka Independence/ ts in the Academy* at Association for the Study of Higher Education Pre-Conference 2018. Wright | EDEA

*Jump in! Jumpstarting university faculty to develop online courses* at Teaching, Colleges & Community (TCC) International Online Conference. Eichelberger | LTEC

*Roundtable Session* at 9th Annual International Conference on Education and Social Justice. Wright | EDEA

*Degrees of Freedom or Freedom from Degrees: Do You Need a Doctoral Degree?* at Asian Pacific Islander and Desi American Leadership Academy. Wright | EDEA

*Digital building blocks for learning: Motivating and engaging students through Minecraft game-based learning* at Annual International Council of Educational Media (ICEM) Conference. Leong, Asseltine, & Eichelberger | LTEC

*How I found more overt ways to bring social justice to action in my secondary disciplinary literacies methods course* at 21st European Conference on Literacy. Frambaugh-Kritzer | ITE

*Examining Reading Growth Profiles among Children of Diverse Language Backgrounds Using Known and Unknown Approaches* at 2019 Annual Conference of the American Educational Research Association. Heck | EDEA

*Examining the Mediating Effects of Home Literacy Environment on Reading Growth Across Four Language Backgrounds* at 2019 Annual Conference of the American Educational Research Association. Heck | EDEA

*Capturing a Community's Stories: A Case Study* at 37th Annual Pacific Circle Consortium Conference. Ward | CRDG

*A case study of teacher candidate needs in an online/hybrid program* at Annual Conference for the Association of Teacher Educators. Robinson, Tan, & McKown | ITE

*A'ohe pau ka 'ike i ka hālau ho'okahi: Student researchers as a source of knowledge in the He'eia NERR* at National Estuarine Research Reserve System (NERRS) annual meeting. Philippoff et al. | CRDG

*Mindfulness-based stress reduction and teacher candidates* at Annual Conference of Hawai'i Education Research Association. Ho & Robinson | ITE

*Listening and teacher education learning activities: An invitational education perspective* at Annual Conference of the International Alliance for Invitational Education. Robinson | ITS

*Ethnomathematics: Challenging, engaging, and empowering students with culture-based lessons* at National Council of Teachers of Mathematics Conference. Monkoski-Takamure, Furuto, Galicinao, Marr, & Tam | EDSCS

*A Multiple case study of family, school and community partnerships in eight schools* at 2019 Annual Conference of the American Educational Research Association. Ratliffe, Chappel, & Timmerman | EDEP

*Political knowledge and practice in teaching and learning mathematics* at School Mathematics: Connections to Social and Cultural Contexts in East and Central Africa Conference Keynote Address. Furuto | EDSCS

*Teaching with aloha: A focus on cultural and linguistic diversity* at Paper presented at the Annual Conference of the Hawai'i Educational Research Association. Ratliffe, Yamauchi, Greene, & Purcell | EDEP

*Cracking the STEM code* at 5th Annual East-West Center GalswithLEI Keynote Panel. Furuto, Godwin, & Liu | EDSCS

*Chuukese and Marshallese parent perspectives of early childhood development* at Annual Conference of the Hawai'i Educational Research Association. Timmerman & Ratliffe | EDEP

*Testing - presentation entry* at Annual International Council of Educational Media (ICEM) Conference. Eichelberger | EDSCS

*Break a rule: Moving from tricks and tips to conceptual understanding* at Hawai'i Council of Teachers of Mathematics Annual Conference. Dougherty | CRDG



*Supporting students who struggle in middle grades mathematics* at Utah Professional Development Conference. Dougherty | CRDG

*From x to why: Supporting students who struggle in math* at NCTM Regional Conference. Dougherty | CRDG

*Supporting number development for all students: K-3* at NCTM Regional Conference. Dougherty & Karp | CRDG

*Whole school agreement* at National Council of Supervisors of Mathematics Annual Meeting. Karp, Bush, & Dougherty | CRDG

*Professional Development through Community and Curricular Mapping* at AGU Fall Meeting. Chinn | EDCS

*A Case Study in Building Data Dashboards: Design Decision & Cost-Benefit Trade-Offs* at Association for the Advancement of Computing in Education (AACE) conference, EdMedia + Innovate Learning. Hoffman | LTEC

*Learning and Engagement in a Political and Economic Simulation* at Association for the Advancement of Computing in Education (AACE) conference, EdMedia + Innovate Learning. Paek & Hoffman | LTEC

*Using an Online Simulated World to Promote Global Competence* at Annual Meeting of the American Educational Research Association. Paek, Hoffman, & Au | LTEC

*Student Literacy in an Age of Digital Learning and Video Games* at Hawai'i Information Literacy Summit. Hoffman | LTEC

*Cognition and Technology: Designing Interactions for Learning* at EDEP 663: Models of Cognitive Learning. Hoffman | LTEC

*Facilitating "HOT" program delivery* at University of Idaho 10<sup>th</sup> Annual Transforming the Teaching and Learning Environment International Online Conference. Eichelberger | LTEC

*Help shape education research to include marine education and ocean literacy: You're invited!* at National Marine Educator's Association Conference. Beck, East, Payne, Philippoff, & Wells | CRDG

*Distance Admissions for Remote Applicants: Three Methods for Conducting Interviews* at NAGAP Annual Conference 2019. Kim, Yu, & Wilson | SPED

*Who makes up NMEA? Results of a survey to learn about current membership* at National Marine Educator's Association Conference. East & Philippoff | CRDG

*Losing large brown algae: Dramatic shifts in macroalgal assemblages over 50 years in Waikiki, South O'ahu* at Phycological Society of America Conference. Spalding et al. | CRDG

*Captivate your classroom: Create your own virtual training modules* at International Society for Technology in Education Conference. Tran, Yap, Philippoff, & Schaefer | CRDG

*Stable isotopes reveal food web dynamics for native and invasive mullet species in He'eia fishpond* at Hawai'i Conservation Conference. Nichols et al. | CRDG

*Our Project In Hawai'i's Intertidal (OPIHI): Examining change over time* at University of Hawai'i Sea Grant College Program Research Symposium. Philippoff & Nichols | CRDG

*Conserving a sustainable food source: Differences in freshwater availability may affect dietary habits of native and invasive mullet* at Annual Albert L. Tester Memorial Symposium. Luitgaarden et al. | CRDG

*Effects of submarine groundwater discharge in Wailupe Bay on algal species diversity* at Annual Albert L. Tester Memorial Symposium. Fitting, Greene, Donahue, Nichols, & Philippoff | CRDG

*Place as a context to inform early childhood teacher preparation in Hawai'i* at 40<sup>th</sup> Annual International Association of Early Childhood Education Conference. Chun | EDCS

*(Re)moving the needle from parent involvement to family and community engagement* at 40<sup>th</sup> Annual International Association of Early Childhood Education Conference. Chun & Mattox-Primacio | EDCS

*The Disavowal of Death and Children Dying: Autoethnographic Stories from the Borderlands of Childhood* at 27<sup>th</sup> Annual International Reconceptualizing Early Childhood Education Conference. Au | ITE

*Children in Focus: Photography and the Early Childhood Classroom* at Hawai'i Association for the Education of Young Children (HAEYC) Annual Conference. Au | ITE

*Using learning map models to design accessible science assessments* at Annual Meeting of the National Association for Research in Science Teaching. Andersen, Bechard, Swinburne Romine, Ruhter, & Shipman | CRDG

*Cognitive models for accessible science assessments* at Annual Meeting of the American Educational Research Association. Andersen, Swinburne Romine, & Bechard | CRDG

*A Flipped Orientation: A New Approach to Starting a Distance Program* at Association for National Communications & Technology (AECT) International Convention. Yu | ITE

*Teaching Empathy: Teacher Candidates' Perspectives of the Japanese Internment Camp in Honouliuli* at The 9<sup>th</sup> International Conference on Education and Social Justice. Padua, Smith, Espiritu, & Elliott | ITE

*Marketing and Recruitment Strategies in Special Education Rural Alternative TeacherPreparation Program* at 38<sup>th</sup> Annual ACRES National Conference. Kim & Wells | SPED

*Open NGSS Resources for Middle School* at Hawai'i Science Teachers Association Conference. Andersen | CRDG

*Promote problem solving and skill building through games* at Hawai'i Council of Teachers of Mathematics Fall 2019 Conference. Zenigami & Dougherty | CRDG

*Can we talk? Promoting discourse in the elementary classroom through problem solving* at 2019 National Council of Teachers of Mathematics Annual Meeting & Exposition. Zenigami & Yagi | CRDG

*Supporting Language Learners in the Inclusive Classroom: Using UDL and Digital Tools* at Ed Media and Innovate Learning Conference. Rao & Torres | SPED

*Beyond access: Universal Design for Learning (UDL) and digital tools for meaningful inclusion* at UNESCO Transforming Education Conference for Humanity (TECH) 2019. Rao | SPED

*Culturally Responsive Assessment through Nā Hōpena A'o* at The 9<sup>th</sup> International Conference on Education and Social Justice. Taira | EDCS

*Promoting Diversity and Inclusion within the Hawai'i Council of Teachers of English* at Leadership Affiliate Meeting of the National Council of Teachers of English. Buelow & Taniguchi | ITE

*Ontological Insecurities* at University of Amsterdam, Center for Globalization Studies. Tavares | EDEF

*STEM Literacies--Seizing Teachable Moments: Promoting Inquiry through a Disciplinary Literacy Instructional Approach in Kindergarten* at National Council of Teachers of English Annual Meeting. Buelow & Sugahara | ITE

*The Perils of Belonging: Blood, Ritual, and Subjectivation in Amanda Kernell's Sami Blood* at Faculty Speaker Series. Tavares | EDEF

*Inquiring Out, Developing Within: A Disciplinary Literacy Instructional Framework in Elementary Education* at National Council of Teachers of English Annual Meeting. Buelow & Frambaugh-Kritzer | ITE

*Are instruction expenditures cost-effective in improving high school completion in Hawai'i's Maui district?* at 17<sup>th</sup> Annual Hawai'i International Conference on Education. Ng | EDCS

*In a state of war or peace: Understanding the legal status between Hawai'i and the US* at 17<sup>th</sup> Annual Hawai'i International Conference on Education. Ng | EDCS

*An analysis of instruction expenditures and public high school completion on Hawai'i's Big Island* at 2019 Economics, Finance, Global Management, Accounting, IT, Marketing, MISA, and Healthcare Management Research Conference. Ng | EDCS

*The truth of Hawai'i's past, present, and future* at 2019 Economics, Finance, Global Management, Accounting, IT, Marketing, MISA, and Healthcare Management Research Conference. Ng | EDCS

*Featured Speaker: Contemporary Online Instruction Simplified* at Course Hero 2019 Education Summit. Menchaca | LTEC

*Geographic independence through blended synchronous instruction: A pilot effort in secondary teacher preparation* at International Academic Forum International Conference on Education (IICEM) Conference. Eichelberger & McKimmy | LTEC

*Copyright, Creative Commons and OER: Locating Creative Commons and OER resources* at 2019 Association for Educational Communications and Technology (AECT) annual conference. Menchaca & Irvine | LTEC

*A mixed-methods study of principals' experience using data analytic tools in Hawai'i* at 2019 Association for Educational Communications and Technology (AECT) annual conference. Frontiera & Irvine | LTEC

*Distinguished voices: ATE distinguished awardees share insights on clinical preparation and development of educators* at Meeting of the Association for Teacher Educators (ATE). Fulton et al. | ITE

*One thread at a time: Weaving together a community of learners* at Meeting of the Association for Teacher Educators (ATE). Yoshioka et al. | ITE

*Developing the three dimensions of science in an online learning space* at Meeting of the National Science Teachers Association (NSTA). Yoshioka & Fulton | ITE

*What can I do?: Creating a better future through advocacy and change* at Meeting of the National Science Teachers Association (NSTA). Yoshioka & Fulton | ITE

*Science notebooks: Deepening learning through the integration of science and literacy* at Meeting of the National Science Teachers Association (NSTA). Fulton | ITE

*Experience is the best teacher: How educators at the forefront incorporate a sense of place into STEM curriculum via STEMS<sup>2</sup>* at Meeting of the Association for Teacher Educators (ATE). Fulton, O'Neill, Yu, Kukahiko, & Kent | ITE

*Early learning investments will require investments in the early childhood workforce* at 2019 Hawai'i Data Exchange Partnership Data Summit. Chun, Sole, & Akiu | EDCS

*University of Hawai'i System Preschool Development Grant Tuition Stipend Program [Evaluation]* at 2019 Hawai'i Data Exchange Partnership Data Summit. Chun & Metzler-Nagata | EDCS

# Students & Alumni



## Alumna is Recognized as One of Nation's Top Educators

**Cynthia Tong** received the 2019 *Horace Mann Award for Teaching Excellence* from the NEA Foundation at their Excellence in Education Awards Gala in Washington, D.C. It is one of NEA's most prestigious awards. Tong, who earned a Professional Diploma in Secondary Education from the COE, is an eighth grade social studies teacher at 'Ewa Makai Middle School. Nominated by the Hawai'i State Teachers Association, she is one of only five educators who were selected nationwide and the second Hawai'i educator to win the award and accompanying \$10,000 prize.

She said, "The teacher preparation courses I took at UHM COE have been fundamental to my success as an award-winning teacher. Every award I have won, can be directly traced to coursework I did at the COE."



## Alumna Receives National Dissertation Award

**Candice Frontiera** was selected by the American Educational Research Association (AERA) for a 2019 Division H Outstanding Publication Award in the Category for Outstanding Dissertation. Her dissertation, *A Mixed Methods Study of Principals' Experience Using Data Analytic Tools in Hawai'i*, explores the potential benefits of the growing amount of educational data available for principals. A Department of Learning Design and Technology (LTEC) alumna, she earned a Master of Education in Teaching (MEdT) degree as well as a PhD in LTEC. "Winning this award was truly an honor because it gave me the opportunity to travel to AERA and meet my role models in the field of educational research," Frontiera said. "The COE has stretched me to learn new skills, connected me with a wonderful network of academic peers, and inspired me to present at conferences that I never would have thought to attend."



## PhD Student Wins Regents' Medal for Excellence in Teaching

**Candace Tabuchi**, an associate professor at Kaua'i Community College (CC), was awarded a *2019 Regents' Medal for Excellence in Teaching*. A current PhD student in LTEC, Tabuchi was nominated by her students who read their nomination letter during Kaua'i CC's commencement ceremony in May 2019. In the letter, students cited her commitment to making a difference in their lives as well as the feeling of 'ohana in her class. "The Regent's award is extremely special to me because it came from the students," Tabuchi said. "As an educator, we are not always cognizant of the impact we have on our students' lives. In Career Technical Education, we work to equip our students with skills for success in the workplace. For me, this award validated my work to engage students in the learning process and prepare them for meaningful careers in the visitor industry."

## Doctoral Student Brings Back Hawaiian Educational Diplomacy Program



The Hawaiian Youths Abroad (HYA) program, under the direction of Hawai'iinuiākea Faculty Specialist **Nalani Balutski**, has been reestablished after more than 130 years. A doctoral student in the Department of Educational Administration, Balutski began researching an early Hawaiian travel and diplomacy program as part of her dissertation research before restarting HYA through the Native Hawaiian Student Services (NHSS) in 2018. "With a similar intent to the original program, the NHSS Hawaiian Youths Abroad program provides similar and appropriate points of examination by exploring both the Hawaiian Kingdom educational and international diplomacy prowess in the 19th century while critically examining the illegal attempts that have attempted to exterminate such progress," Balutski said.

## Alumni Win Presidential Award for Excellence in Science and Mathematics



On October 15, 2019, **Nel Venzon** and **Daniel Taira** were among four teachers from Hawai'i announced as winners of the Presidential Award for Excellence in Mathematics and Science Teaching (PAEMST), the highest award given to K-12 teachers of mathematics and science.

Venzon, who earned his MEdT degree at the COE, teaches pre-advanced and advanced placement biology at Mililani High School and is an adjunct professor at Wayland Baptist University. He said, "The COE has provided a solid foundation in my pursuit of a science teaching career. I am also indebted to two professors who unconditionally supported me during my pre-service years in the MEdT program: Dr. Tara O'Neill and Dr. Scott Rob-



inson. They inspired and encouraged me to enjoy working with students as a fundamental part of the teaching profession."

A mathematics and science educator at Lehua Elementary School, Taira holds a BED in elementary education. As a co-leader of Lehua's Math Olympiad team, he and his students have earned multiple trophies and recognitions. "I am deeply humbled to receive the Presidential Award and represent Lehua Elementary School," he stated in a PAEMST release. "This award serves as added motivation to continue finding new ways to make mathematics engaging and enjoyable for my students, so they can find the confidence to excel in whatever path they choose in life."

# Home is where the COE is

Whether our students are from the Hawaiian Islands, West Virginia, or the Philippines, they are all a part of the College of Education ‘ohana (family). Our award-winning programs create a sense of purpose and place while our students contribute to a sense of community and family.



**Rachel Sabourin**

*“... even though I am far from home, I felt a sense of family on campus.”*

**HOMETOWN**

Centennial, Colorado

**DEGREES**

BS in Kinesiology and Rehabilitation Science, Health and Exercise Science Student

**WHY DID YOU CHOOSE UH MĀNOA?**

UH Mānoa has been my dream school ever since I was nine, and I immediately fell in love with the campus. The year after I visited this school the first time, the softball team went to the Women’s College World Series in 2010. I was so excited to learn more about the Hawaiian culture and explore the island of O’ahu.



**Jelton Anjain**

*“... before the influence of the outside world, Islanders learned through observation and actually doing. It was all place-based learning.”*

**HOMETOWN**

Ebeye Island, Kwajalein Atoll, Republic of the Marshall Islands (RMI)

**DEGREES**

MEd in Curriculum Studies, PACMED\* Program

**WHAT WAS THE THEME OF YOUR COMMENCEMENT SPEECH FOR THE FIRST COHORT OF PACMED GRADUATES (JULY 26, 2019)?**

The degree we received during the commencement ceremony was just a piece of paper, a symbol of the journey that got us to that point. The how we got to this point in our lives is more important - how we collaborated as a cohort and how we were able to implement what we learn in the classroom with our colleagues outside of the program and our students in the classroom.



**Philip Sarmiento**

*“I’m able to apply the theoretical knowledge that I’m learning to my current role as a student academic advisor.”*

**HOMETOWN**

Philippines, Hong Kong, and Honolulu

**DEGREES**

MEd in Educational Psychology Student

**WHY DID YOU SELECT THE UHM COE?**

UHM in general is home to me. I had an amazing and memorable experience as an undergraduate, so it was a natural decision for me to pursue my graduate studies here. I wanted to earn my education at a Carnegie-classified doctoral institution, and I chose the COE because of the positive interactions I had with the faculty and staff of EDEP.



**Ashlee Fouvale**

*“TTTAP provides great opportunities for teachers to gain knowledge and experience, but it is also very family-oriented and passionate about serving the children of American Sāmoa.”*

**HOMETOWN**

Aunu’u Island, Tutuila, American Sāmoa

**DEGREES**

BEd in Elementary and Special Education, Territorial Teacher Training Assistance Program (TTTAP)

**HOW DID YOU BECOME INTERESTED IN THE FIELD OF SPECIAL EDUCATION?**

I have been serving special education children for more than ten years, but it has not been an easy task without special education training or background knowledge in teaching children with various disabilities. I needed the knowledge and skills, and our children needed the support. When they started the first SPED Cohort in American Sāmoa in the summer of 2015, I took on the opportunity.

\* PACMED is a degree program in the Department of Curriculum Studies with a focus on culturally responsive, Pacific, placed-based STEAM subjects (science, technology, engineering, arts, and mathematics).



**Jason Hill**

*"The GPEPP program is great for anyone interested in any educational field, and the online format provides flexibility for those with busy schedules or who may have already started their career."*

**HOMETOWN**

Martinsburg, West Virginia

**DEGREES**

MEd in Educational Foundations, Global Perspectives on Educational Policy and Practice (GPEPP) Student

**WHY DID YOU SELECT THE UHM COE?**

They developed a new online program that aligns with my career goals and allows me to engage in class no matter where I am in the world. Whether I am on O'ahu, traveling with the UH Wahine Basketball Team as Graduate Manager, or on break on the east coast, I am able to log in to class and be an active participant.



**Michael Jose**

*"...I felt that my platform to reach students and affect their success would be magnified if I got into administration."*

**HOMETOWN**

Kalihi, O'ahu, Hawai'i

**DEGREES**

MEd in Educational Administration

**WHAT DOES IT MEAN TO BE A PART OF THE EDUCATIONAL ADMINISTRATION DEPARTMENT?**

It means a lot. I look up to many people who have gone through the program and department who are school leaders. Being a part of the educational administration department is like being part of a family of administrators who have taken the time and effort to invest in their careers so they can have a bigger impact on the lives of the students we support.



**Koran Munafo**

*"The learning is approachable, the support is genuine, and the overall user-focus of the program supports student success."*

**HOMETOWN**

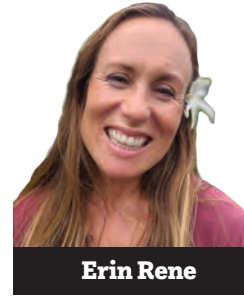
Hilo, Hawai'i

**DEGREES**

MEd in Learning Design and Technology

**HOW WOULD YOU DESCRIBE THE LTEC PROGRAM TO OTHERS?**

The LTEC program is versatile and flexible and will allow you to customize the learning to your needs and area of interest. The coursework is relevant, modern, and inclusive. The faculty and staff are caring and REAL. This is truly an inclusive learning experience.



**Erin Rene**

*"I have received excellent support throughout the program. My professors have been readily available and happy to provide additional ideas, strategies, and research."*

**HOMETOWN**

Bellingham, Washington

**DEGREES**

Post Baccalaureate Certificate in Special Education (Mild/Moderate) Student

**WHAT HAS BEEN THE BEST PART OF THE PROGRAM EXPERIENCE SO FAR?**

I love the coursework. Although being an emergency hire and a student is challenging, I have been able to immediately apply strategies learned in class in my own fully self-contained classroom. The learning curve has been steep, but the field is fantastic, and the faculty and staff have been incredibly supportive of me.



**Maya Ross**

*"It's a blessing to receive the financial support to attend a rewarding program. I'm forever grateful to Senator Kidani for working on securing the funds for so many of us teachers to attend this program."*

**HOMETOWN**

Lincoln, California

**DEGREES**

Post Baccalaureate Certificate in Secondary Education Student

**IS THERE ANYONE IN PARTICULAR WHO INSPIRED YOU TO PURSUE TEACHING AS A CAREER?**

Cass Cline and Christel Blumer-Buell, both longtime teachers at Hāna High School & Elementary, are two reasons with big shoes to fill. The woman who has inspired me to continue on this rigorous and challenging path of earning my PBSCE is Dr. Charlotte Frambaugh-Kritzer in the COE. I don't know where I would be without these three mana wahine in my life.

\*TTAP is an Institute for Teacher Education program, offering Bachelor of Education (BE) degrees for in-service elementary teachers in two areas - the Dual Preparation in Elementary and Special Education (ESEE) program and the Dual Preparation in Elementary and Early Childhood Education (EECE) program.

# COE Alumni

are Award Winning Teachers and Principals



## Teachers of the Year

Each of the Hawai'i Complex Area Teachers of the year was awarded \$500 from the Polynesian Cultural Center, \$100 from the Hawai'i Schools Federal Credit Union, and an honorarium from the Hawaiian Electric Company.

**Ululani Russo**, the Nānākuli-Wai'ānae Complex Area winner, teaches at Wai'ānae Intermediate School. She is a PhD student in the Department of Curriculum Studies.

*"All of the graduate classes I have taken have helped my teaching career tremendously, as they focus on Hawaiian culture and place-based science. As a new PhD student, I am taking classes out of my comfort, and it's been opening my eyes to multiple perspectives."*

**Celeste Endo**, the Kaimuki-McKinley-Roosevelt Complex Area winner, teaches at Queen Ka'ahumanu Elementary School. She earned a BEd in elementary education and an MEd in educational technology.

*"My most vivid memory of the COE is working into the wee hours of the morning to complete a team video project. My classmates and I made discoveries, laughed hysterically, and developed an 'ohana. This sense of belonging has helped me throughout teaching as no one teacher can do this work alone. We are stronger through our combined efforts to care, share, and grow together."*

**Nikki Morishige**, the Castle-Kahuku Complex Area winner, teaches at Waiāhole Elementary School. She earned her MEdT from the college.

*"At the time, I didn't realize just how valuable what I was learning throughout my courses in the Master of Education in Teaching (MEdT) program was. Now, twelve years after graduation, I'm finding that the solid foundation the COE has helped me build is what guides me in my profession."*

**Kathy Sewake**, the Hilo-Waiākea Complex Area winner, is a classroom teacher and Technology Coordinator at Waiākea Elementary School. She holds a BEd in elementary education and an MEd in educational technology.

*"The support that I received from my professors and peers throughout the elementary education and educational technology programs was amazing. In fact, I continue to learn from these incredible educators and friends today."*

**Dustin Chang**, the 'Aiea-Moanalua-Radford Complex Area winner, teaches at Pearl Harbor Elementary. He received a BEd in Secondary Education.

*"The professors were very encouraging and helpful, preparing us for what we needed to know and what to expect as future teachers. The classes allowed me to learn and make connections with professionals in the field of music, many of whom I turn to today for help and advice."*



**PRINCIPAL OF THE YEAR**

**Fred Murphy**, Mililani High School Principal, was named the National Distinguished Principal of the Year by the Hawaii Association of Secondary School Administrators. He earned his BEd in Secondary Education.

*"The College of Education was truly impactful in my development as an educator, and later, educational officer. I have vivid memories of the caring and knowledgeable professors who truly knew what was going on in our public schools, and I felt well-prepped to enter the DOE."*



**TERRITORIAL TEACHER OF THE YEAR**

**Edney Gasmig Apulu** was named the 2020 Territorial Teacher of the Year. A social studies teacher at Tafuna High School in American Samoa, Apulu earned his MEd in the Curriculum Studies PACMED program.

*"It is truly an honor and a blessing to be recognized for doing what I am passionate about. It's an amazing feeling to educate young minds for a better future. To become an ambassador of all the passionate educators, I am humbled."*

**MILKEN EDUCATOR AWARDS**



**Sarah King**, the 2019 Hawai'i Milken Educator Award winner, is the Title I coordinator at Ala Wai Elementary School. She earned a BEd in elementary education and an MEd in curriculum studies. The only Milken Educator selected from Hawai'i in 2019, she was among 33 teachers nationwide selected for the premier teaching recognition, which comes with an unrestricted \$25,000 cash prize.



**Bella Finau-Faumuina**, the Hawai'i State Milken Teacher of Promise winner, teaches at Kāne'ohe Elementary School. She holds a BEd in Exceptional Students and Elementary Education (ESEE) and an MEd in Curriculum Studies (STEMS<sup>2</sup>). She leads the Innovation Academy at her school, which provides inclusive learning experiences for students with disabilities.



**Terrence Tenjoma**, a Honolulu District Milken Teacher of Promise winner, teaches at Noelani Elementary School. He received his BEd in Elementary Education and is an MEd in Educational Foundations student.



**Kari Odo**, also a Honolulu District Milken Teacher of Promise winner, teaches at Haha'ione Elementary School. She earned her Post Baccalaureate Certificate in Special Education.



**Ashley Ono**, a Leeward District Milken Teacher of Promise winner, teaches at Makaha Elementary School. She earned her BEd in Elementary & Special Education and is an MEd in Special Education student.

# COE Alumni Association

## OFFICERS

Helen Hasegawa, *President*

Jean Kiyabu, *Vice-President*

Jan Ikeda, *Secretary*

Gwen Maeda, *Treasurer*

## DIRECTORS

Kristen Brummel	Warren Kawano	Dean Nakamoto
Bebi Davis	Holly Kiyonaga	Roberta Nakamoto
Stephanie Furuta	Sherilyn Lau	Charles Naumu
Evelyn Hao	Vail Matsumoto	Steve Shiraki
Michael Harano	Karen Moriyama	Ellen Shroeder

## EX-OFFICIO MEMBERS

Nathan Murata, *COE Dean*

Mark Fukeda, *COE Director of Development*

## STUDENT ASSOCIATION REPRESENTATIVES

Mark McCormick, *COEDSA Representative*

Shelby Schwartz, *CESA Representative*

## Annual COEAA General Membership Meeting



The annual COEAA General Membership Meeting was held on June 7, 2019, at the Japanese Cultural Center of Hawai'i Grand Ballroom with keynote speaker **Dr. Glenn Medeiros** (pictured with COEAA President Helen Hasegawa). After his rise to fame for the hit song "Nothing's Gonna Change My Love for You," he chose to pursue a career in teaching and educational administration to make a difference in the lives of others. He has taught at various public and private schools throughout O'ahu and is currently the President of St. Louis Schools.

## 2019 COEAA Distinguished Alumna



**Catherine Payne** is the 2019 COEAA Distinguished Alumna. A current Board of Education Chairperson, she has worked as a teacher, vice principal, and principal over the course of her amazing 35-year career. Nurturing her students with academic, language, and socio-economic challenges, she has led some of the toughest schools on O'ahu. In 1991, she was the recipient of the National Association of Secondary School Principal (NASSP) of the Year Award, followed by the prestigious Milken National Educator Award in 1995. Upon her retirement as principal of Farrington High School, she served as Chair of the State Public Charter School Commission. She has served on numerous other education boards, including the Hawai'i Teacher Standards Board, Education Institute of Hawai'i, and Adult Friends for Youth. She also served as treasurer of the COEAA and was a mentor for doctoral students in the EdD Program at the College of Education. She is an active member of two honorary sororities for women educators – Beta Chapter of the Delta Kappa Gamma Society International and the Nu Chapter of the Alpha Delta Kappa Society International.



## COE/COEAA Teacher Cadet Camp



The COE and the COEAA co-sponsored an all-day teacher cadet camp for Department of Education (DOE) students enrolled in teacher academies from Kapolei, Waipahu, and Pearl City High Schools on June 12, 2019.

## UHM Homecoming Picnic on the Path



On September 19, 2019, COEAA Board members participated in the UHM Homecoming Picnic on the Path event, sponsored by the UH Foundation Alumni Relations office.

## New COEAA Board of Directors

**Michael Harano**, who earned a BED in elementary education from the COE, is the Principal of Washington Middle School where he has served for the past 15 years. He was selected as the 2006 National Distinguished Principal of the Year by the National Association of Elementary School Principals (NAESP). In 2016, he was named Hawai'i State Principal of the Year by the National Association of Secondary School Principals (NASSP).

**Holly Kiyonaga** holds an MEd in curriculum and instruction as well as a professional diploma in secondary language arts education from the COE. An educator for 36 years, she has worked in the HIDOE, community colleges, and abroad in Japan. In addition to teaching, she has been the principal of several Hawai'i schools, including Royal School, Queen Ka'ahumanu Elementary, Hōkūlani Elementary, and Pālolo Elementary.

**Karen Moriyama** earned a BEd, MEd, and PhD in educational administration. Over the course of her 35-year career, she has been an elementary teacher, school counselor, district resource teacher, vice principal, and principal. She later became the Leeward District Deputy Superintendent and then, at the time of her retirement, was the Complex Area



Front row: Holly Kiyonaga, Ellen Schroeder, Karen Moriyama, and Kyle Maemori-Yoshida; back row: Dean Nakamoto, Michael Harano, and Shelby Schwartz

Superintendent for the Nānākuli-Pearl City-Waipahu complexes.

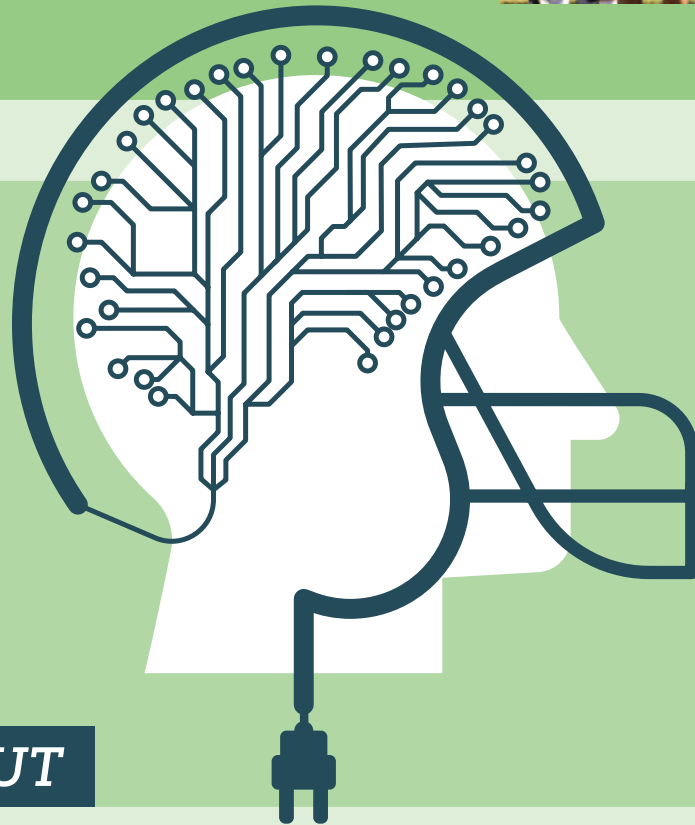
**Dean Nakamoto**, who holds an MEd in special education, began his teaching career at UH Mānoa where he taught beginning Japanese language courses in the Department of East Asian Languages and Literatures and the College of Continuing Education. With the DOE, he has held positions as a preschool teacher, vice principal, and principal. He is currently a District Educational Specialist in the DOE's Honolulu District Office, Special Education Section.

**Ellen Schroeder** recently retired after serving Olomana School for 38 years. Midway through her tenure, she became the Special Education Department Chair and subsequently worked

as the Student Services Coordinator. She was named the Hawai'i State Teacher of the Year and Milken Educator Award winner in the same year (1997). Currently, she participates in church activities that benefit the homeless, and she serves on the Boards of Youth Service Hawai'i and the National Milken Educators of Hawai'i.

The COEAA Board of Directors would also like to welcome the following new COE student representatives: **Shelby Schwartz** and **Kyle Maemori-Yoshida**, Co-Presidents of CESA; **Yuko Ida** of COEMSA; and **Mark McCormick** of COEDSA. We look forward to working with these new directors and student leaders to meet the goals of the organization and to provide support to the COE.

# High Tech High School Sports



GETTING  
YOUR HEAD  
>>>  
OF THE  
GAME

**OUT**





**The College of Education (COE)** launched a three-year program to reduce head impact exposure in Hawai'i high school football players and to enhance community awareness and environment for head safety. The *HuTT<sup>®</sup>808* program is a collaboration with the COE Hawai'i Concussion Awareness Program (HCAMP) in partnership with the University of Massachusetts Lowell (UMass Lowell) and funded by the GOG Foundation.

Based upon research findings, high school football participants are reported to sustain an average of 600, and as many as 2,000, head impacts in a single season. Impacts to the top and front of the helmet generate the greatest forces and pose the highest risk for acute brain and spinal cord injury. There are also potential links between head impact exposure and cognitive impairment, early-onset Alzheimer's, and chronic traumatic encephalopathy.

## About the GOG Foundation

Set up by its founder, Attorney Gary O. Galiher, the GOG Foundation supports projects designed to improve Hawai'i's social, economic, and cultural well-being. One of the Foundation's specific purposes is to bring awareness about the devastating effects of head injuries sustained in contact

"Tackling and blocking behaviors using the head can be attributed, in part, to the fact that traditional helmets give players a false sense of safety," explained Dr. Erik Swartz, UMass Lowell Professor and co-director of *HuTT<sup>®</sup>808*. Swartz developed the concept of helmetless tackling and blocking training intervention to decrease the risk of acute head and neck injury while minimizing potential adverse effects on cognitive development and health in children.

In the fall of 2019, the program began working with Pac-Five and St. Louis School football teams. Each athlete was fitted with a new Riddell helmet, which includes head impact sensors, worn during practices and games to record the location and magnitude of all impacts sustained on the field. Data are collected in real-time by COE Department of Kinesiology & Rehabilitation Science graduate assistants who may signal athletic trainers to start the concussion protocol.

sports and how these could be prevented. Before Galiher's untimely death in 2016, he had an outstanding legal career in Hawai'i as a committed and passionate advocate of vulnerable clients. His Foundation sponsored an annual Traumatic Brain Injury (TBI) conference in Honolulu where leaders from

During the second year of the program, players will be divided into groups with a test group receiving *HuTT<sup>®</sup>808* (or helmetless tackling training) intervention. This is when they will learn techniques on how to tackle and make contact without using their heads while getting used to the feeling of playing without a helmet on. The goal is that they will be less inclined to use their heads when they put their helmets on during practices and games.

*HuTT<sup>®</sup>808* co-director and COE Dean Nathan M. Murata said, "Once the outcomes of our program have shown a reduction in head impact exposure and concussions as well as improved head safety behaviors with our inaugural groups, the program will continue to work towards sustained implementation and wider acceptance in grade levels and schools across Hawai'i."

across the country in the fields of neurology and sports medicine presented the latest information on TBI and discussed strategies for making sports safer. The *HuTT<sup>®</sup>808* project is the result of conversations began during Galiher's last conference.

*HuTT<sup>®</sup>808* has received broad support and media coverage since its inception

UH NEWS: <http://go.hawaii.edu/A4G>  
KHON2: <http://go.hawaii.edu/A4A>  
KHON2: <http://go.hawaii.edu/J4A>  
Star Advertiser: <http://go.hawaii.edu/A43>

# Donors & Friends



## A MESSAGE FROM THE DIRECTOR OF DEVELOPMENT

Aloha and thank you for your support of the University of Hawai'i at Mānoa College of Education. In our last fiscal year (July 1, 2018 – June 30, 2019), you supported us with nearly \$1.9 million. This was a terrific year for the college in which we received more than 1,150 gifts.

Our donor feature in this issue of Currents showcases the very generous support of **Roy Sakamoto and his late wife Cornelia Sakamoto**. They endowed a scholarship in 2013, which now has a market value exceeding \$400,000! A nice thing about the criteria for Roy and Connie's scholarship is that it does not specify a subject area or grade level. This is immensely helpful to our scholarship committee in selecting students studying in any area of the college.

To fund the scholarship, they used Qualified Charitable Distributions from their IRA. Because they were older than 70½, they could direct their investment company to send their distribution directly to their scholarship fund at the UH Foundation. By doing this, they avoided increasing their taxable income from their IRA Required Minimum Distributions. Thank you Roy and Cornelia!

Another similar strategy is to donate appreciated stocks vs. cash. This allows you to avoid the tax on the capital gain on the stocks.

If you have any questions about how you can support our students, faculty, and programs, please call or email me. Or if you just want to explore some ideas and discuss how you might leave your legacy, I would be happy to talk with you!

Mahalo nui loa,

**Mark Fukeda**

Director of Development  
(808) 956-7988  
mfukeda@hawaii.edu

## WAYS TO GIVE...

The alumni, friends, and faculty of the College of Education have always displayed a charitable spirit. This is evidenced by the number of gifts the College receives each year – one of the most of any academic unit on the Mānoa campus. Our tax codes provide benefits that make it possible for the charitable spirit to be expressed through many forms of giving.

### Outright Gifts

The most common way to make an immediate gift is by writing a **check** or **online** via the UHFoundation.org website. Depending on your tax situation, this generates a charitable income tax deduction for you in the year of the gift.

### IRA Required Minimum Distribution

If you are over 70½, donating directly to UH Foundation via your regular **IRA distribution** can also help avoid taxes. You must have your fund administrator make checks payable to the UH Foundation.

### Real estate, Securities, or Bonds

Held for more than a year, these also have the advantage of providing you a charitable deduction based on the current fair market value, as well as *bypassing capital gains tax* on the appreciation.

### Charitable Bequests

A bequest makes it possible for you to make your wishes known today without relinquishing needed assets during your lifetime. If you do not decide where your assets go, the government will do it for you.

### Planned Gifts

Sometimes called deferred gifts, the term “planned gifts” refers to specific strategies that can benefit the College at some point in the future while offering immediate benefits to you.

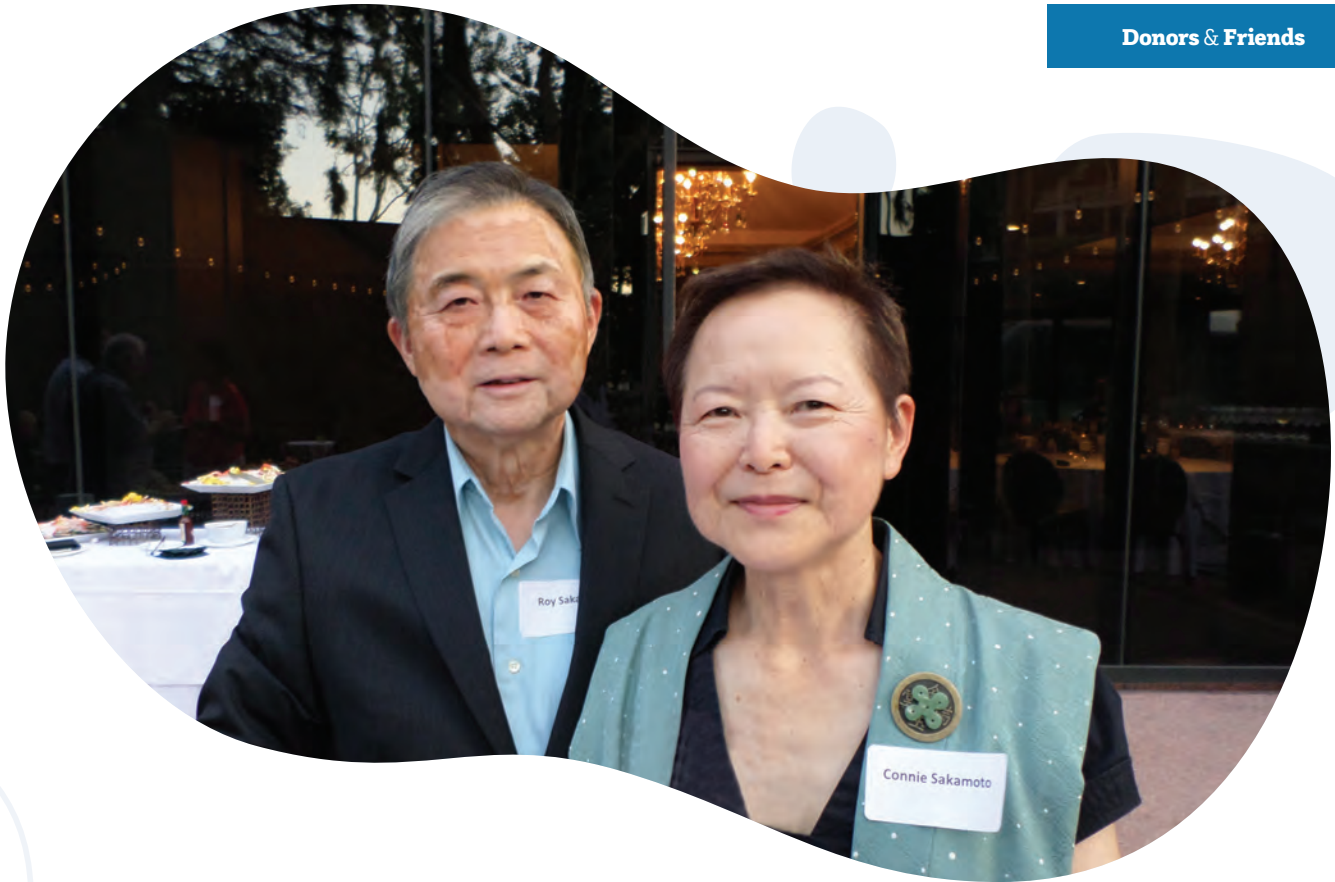
The **Charitable Gift Annuity** is a great example of how a gift generates fixed income for you. This is actually a contract between you and the college, via the UH Foundation, that is part gift and part annuity. In addition to the annuity payment, you receive a charitable income tax deduction and a portion of each annuity payment may be tax free.

The **Charitable Remainder Trust** is perhaps the most versatile charitable giving tool. With this, it is possible to bypass capital gains tax on the sale of highly appreciated assets, generate an increase in income, receive an attractive charitable income tax deduction, and fulfill your philanthropic objectives.

The **Charitable Lead Trust** allows you to transfer your cash or property to fund a lead trust that makes gifts to us for a number of years. You receive a charitable deduction for the gift. Your family receives the remainder at substantial tax savings.

### Payroll Deductions

Many UH faculty and staff members choose to make regular gifts to support the areas at UH they care about. By completing the Salary Assignment D-60 Form, you can easily set up an automatic deduction and help the UH students, programs, research, and initiatives of your choice.



## Donor Feature

### CORNELIA F. AND ROY SAKAMOTO SCHOLARSHIP ENDOWMENT

#### About Cornelia F. Sakamoto

Born and raised in Hawai'i, Cornelia (Connie) F. Sakamoto graduated from the University of Hawai'i at Mānoa College of Education in 1964 with a Bachelor of Education degree. Attending college when women had fewer options in education and career fields, she was grateful to have received a scholarship from Hui Makaala, an Okinawan scholarship organization. Because of this instrumental support, she would go on to establish the *Cornelia F. and Roy Sakamoto Scholarship Endowment* fund to support students with financial need at the College of Education.

As a young woman, Connie was an idealist who thought she would become a nurse; however, she opted for a program that would lead her to the classroom instead. Seeking a broad-based education, not only for herself but also for the inquiring minds she would go on to teach, Connie immersed herself in four years of teacher training and speech classes in an effort to speak "good English." Relocating to California to begin her teaching career, she taught fifth grade in the Norwalk-La Mirada Unified School District.

An early adopter of personal computers, Connie taught her students elementary programming, which led her school to win a Distinguished School award. She was an adventurer as well as an innovator. A trained private pilot who flew a Cessna, Connie also flew in hot air balloons and gliders. She was a longtime resident of Huntington Beach, California where she passed away on September 14, 2015 at the age of 73.

#### About the Fund

Connie and her husband, Roy Sakamoto, established their endowment fund in June 2013 with a gift of \$37,000. Roy's giving continues to this day and has exceeded \$380,000. Criteria for the scholarship does not designate a subject or research area, which leaves it open for any area of study, graduate or undergraduate, in the College of Education

# Donors & Friends

July 2018 – June 2019

## In Memory Of...

**Charles Araki**

Mark Fukeda  
Alan Shoho

**Frederick Bail**

David Sherrill  
Stanley & Myrtle Matsumoto

**Violet Ihara**

Marie Otani

**Lillian Makua**

Charles Makua

**Linda McCormick**

Neal & Vera Arita

**Robert Miyashita**

Genevieve Miyashita

**Andy Nii**

Joe Matsukawa

**Leonard Von Flatern, Jr.**

Penelope & Richard  
Burniske

**R. W. "Buddy" Burniske**

Jackie Burniske  
Penelope & Richard  
Burniske  
Myrna Chang  
Stella Chow-Crouch  
Sandra Endo  
Sandra Erickson  
Carol Ginoza  
Hsiu Han Hou  
Vinh Kien Huynh  
Jin Sook Kaminaka  
Brenda Kanae  
Matthew Liew  
Christine Loi  
Sumiko Mooko  
Nozomi Ozaki  
Helen Rauer  
Deanna Reece  
Dora Sun  
Cynthia Von Flatern  
Miles & Susan Wagner  
Aline Wong  
Chihoko Yosemori

## In Honor Of...

**Daniel Boylan**

Kenrock Higa

**Penelope & Richard  
Burniske**

Sandra Erickson  
Mary Leffel

**Randall Fong**

Alana Busekrus

**Royal Fruehling**

Diana Bonsignore

**Amber Makaiau**

Manoa Heritage Center

**Thelma Nip**

Jeanne Chang  
Helen Hasegawa  
Gayle Lum  
Roberta Nakamoto  
Kenneth Nishihara, Sr.

**Edward Shultz**

Kenrock Higa

## Corporate, Foundation & Organization Donors

**Up to \$1,000,000**

The Learning Coalition

Asahi University  
Birendra S. Huja, M.D. Inc.  
Manoa Heritage Center

**\$100,000 – \$300,000**

Harry C. & Nee-Chang Wong  
Foundation

**\$75,000 – \$99,000**

Samuel N. & Mary Castle Foundation

**\$50,000 – \$74,999**

Hawaii Community Foundation  
National Academy of Education

**\$25,000 – \$49,999**

James & Abigail Campbell  
Family Foundation

**\$15,000 – \$24,999**

Charles Stewart Mott Foundation  
Educational Technology and  
Life Corporation

**\$10,000 – \$14,999**

Atherton Family Foundation

**\$5,000 – \$9,999**

Dr. Alvin & Monica Saake Foundation  
Hawaii Afterschool Alliance

**\$3,000 – \$4,999**

Aloha United Way

**\$1,000 – \$2,999**

Hawaii Educational  
Research Association  
Hawaii Heat FC  
Matson Navigation Company, Inc.

**\$500 – \$999**

Benevity Community Impact Fund  
College of Education Alumni Assn.  
Foundation 857, Inc.  
Ing Family Fund  
ONTS CPA, LLP  
The Oregon Community Foundation  
United Auburn Indian Community of  
the Auburn Rancheria

**Up to \$500**

The Ariyoshi Family Trust  
First Hawaiian Bank Foundation  
Foodland Give Aloha  
Foodland Super Market, Ltd.  
Kauai Japanese Cultural Society  
Keiko K. Grant Language Services  
Punahou School  
Tiny Tots Daycare  
Verizon Foundation

## INDIVIDUAL DONORS

### **\$50,000 – \$100,000**

Roy Sakamoto  
Allan Totoki

### **\$20,000 – \$49,999**

Carl Daeufer  
Estate of Alex & Frances Pickens

### **\$15,000 – \$19,999**

Robert Kiessling  
Ruddy Kiessling  
Kelvin & Betsy Young

### **\$5,000 – \$9,999**

Victoria Asayama  
Marjorie Au & John Morris  
Herbert Matsuo

### **\$2,500 – \$4,999**

Ellen (& The late Charles) Araki  
Kathryn Au  
Royal Fruehling  
Caryl Hitchcock & John Sprinzel  
Morris & Lorna Lai  
Lorraine & John Stringfellow

### **\$1,500 – \$2,499**

Anne & Ralph Freese  
Gloria Kishi  
Keiko & James Mimaki  
Donna Omura  
Ralph & Cecelia Stueber  
Joel & Michelle Weaver

### **\$1,000 - \$1,499**

Anonymous  
Pualani Akaka  
Michael & Bina Chun  
Richard & Evelyn Hanki  
Yuko Hikichi  
May Imamura-Uruu  
Wayne & Amy Kanemoto  
Donald Mickey & Stephanie Feeney  
Arthur & Sachie Murata  
Deanna Reece

### **\$500 – \$999**

Henry Ariyoshi  
Maybelle Boyd  
Charlotte Cambra  
Virgie Chattergy  
Warren & Kathleen Chee  
Mona Chock & Patrick Young

Regina Edwards  
Lynette Furukawa & David Yamashita  
Nancy Hirahara  
Greta & Robert Hoshibata  
D. Huggins  
Joan Husted  
Jennie In  
Jennifer Ing  
Lloyd & Caroline Kajiwara  
Lester Kunimitsu  
Carol Lee  
Sallie Lee  
Glen & Sandra Moribe  
Ralph & Grace Murakami  
Enid Nii  
Wayne & Carolyn Okunaga  
Yoshinobu Oshiro  
Marcelo & Veronica Pagat  
Catherine Payne  
Russell & Janice Roberts  
Miles Sakaguchi  
Theodore & Ruth Sakai  
John & Bonnie Stephens  
Rebecca Wimmer  
James & Harriet Yoshimori

### **\$250 – \$499**

Cosmo & Ann Arakawa  
Myron & Ellen Arakawa  
Millicent & Leslie Asari  
Elizabeth Aulsebrook  
W. & Janet Beaulieu  
Rhonda Black  
Eva & Jerry Bohannon  
Patti Burke  
Alice Carpenter  
Richard & Thelma Chun  
Robert Clague  
Mike Claxton  
Irene & James Connors  
Sandra Erickson  
Barry & Adele Faber  
Mark Fukeda  
Karen & Alvin Fuse  
Clay & Lynda Goodman  
Jennifer & Jonathan Grems  
Wendy Gumm  
Baron Gushiken  
Sandra Hagstrom  
Tokio Harada  
Helen & Allan Hasegawa  
Carol Hashiro  
Andrea & Ted Heid

Toshio & Jeane Higa  
Daniel & Amy Hironaka  
Ben Hu & Rongsheng Liang  
Christine Irvine  
Wayne & Margaret Jyo  
Miyako Kajiwara  
Arlene Kawabata  
Amy Kubota  
Arlene Lee-Williams  
Charles Makua  
Suzanne & Michael McCrary  
Charlotte & Roy Miyamoto  
Shirley & Ray Miyamoto  
Jean Motokane  
Betty & Raymond Mow  
Derek Murai  
Curtis & Dee-Ann Nishioka  
Merlinda Oania  
Roy & Darlene Oshiro  
Nozomi Ozaki  
Hyun-Sook Park & Stanley Young  
Mark & Shannon Peterson  
Nora & Reynold Saito  
Katherine Santuro  
Leanne Savella  
Alice Sekiya  
Steven Shiraki  
Alan & Vera Shoho  
Lynn & Kelvin Shoji  
Velvet & Andrew Siegel  
Lillian Sodetani  
Guy & Lynne Tagomori  
David & Lee Takagi  
Gail Tamaribuchi  
Donna Tamasese  
Elsie & Shinya Tanaka  
Christine Thompson  
Suzanne Thouvenelle  
Vaimili Tuialuuluu  
Andrea Ueno  
Kellen Uyeda  
Anthony & Lilia Villasenor  
Ruth Watanabe  
Claudia Yano  
Toshie & Ronald Yoshida  
JoAnn Yuen

## INDIVIDUAL DONORS

\$100 – \$249

Anonymous · Ernest Abe · Desiree Abreu & Richard Kawasaki · Patsy Akagi · Thomas & Joyce Akimoto · Marlyn & Lloyd Akiona · William & Abegale Akutagawa · Susan Alivado · Eva Anderson · John Anderson · Hazel Anzai · Sande Arakaki · Karen Arakawa · Neal & Vera Arita · Mark & Bernice Asakura · Charles Asao & Gladys Tokunaga-Asao · Nancy Asaoka · Allen Awaya · Junko Ayabe · Sheryl Bada · May Badoyen · Frederick Bail, The late · Juanita Baltierra · Andrea Bartlett · Ann Bayer · Roger & Masako Bellinger · Todd & Betty Berens · Tracey Bielenda · David Blanchard · Carol & Robert Brennan · Leslie Burnau · Jackie Burniske · Alana Busekrus · Ronald & Cecelia Cambra · Cynthia Campbell · Patricia Carter · Myrna & Andrew Chang · Myrtle & Kenneth Chang · Selvin & Frances Chin-Chance · Lillian Takeuchi · Loretta Ching · James & Midori Chiya · Doris Choi · Stewart Chun & Diane Sakumoto · Victor & Sue Ann Chun · Eileen Clarke · Pablito Collado · Dennis Corpuz · Gail Crosson · Linda Cruz · Pamela Cunningham · Kitty Dennis · Linda Dimisillo · Allyson Doherty · Susan Donald · Ruby Donlin · Robert & Patty Downey · Susan & Michael Emura · Glenn Fernandez · Joseph & Karen Flatt · Ronald & June Flegal · Kristel Joy Florendo · Hilda Fo · Jon Fo & Amy Norton · Anne & Scott Fong · Solomon Ford · Michelle Frank · Karen Fujii · Jean Fujinaga · Francis & Gayle Fujioka · Gladys Fujiuchi · Evelyn Fukuki · Elmira & Benjamin Fukumoto · Paul & Charlene Fukunaga · Daniel & Louise Funasaki · Mary Furtado · Stephanie Furuta · Dayna Garvin · Clyde & Margaret Gibo · Robert & Anita Gillchrest · Gabrielle Glatt · Helen Gomi · Clara Goto · Edean & Glenn Goya · Noriko Gray · Dickey & Frances Hamasaki · Gayle Hamasaki · Donald & Amy Harada · Leighton & Sue Hasegawa · Lee Hashimoto · Katherine Hashiro · Catalina Hatch · Naomi Hayakawa · Betty Hayashi · Rena Hayashi · Katelyn Hayashida · Lyle Hendricks · Eric Heu · Joann Higa · Roy & Doreen Higa · Selina Higa · Donna Higashi · Annette Hill · Francis & Carol Hirashiki · Hazel & Robert Hirayama · Sherry Holley · June Honda · Karen Hosaka · Howard & Sylvia Humphreys · Kimiyo Ide · Gary & Portia Ige · Ralph & Jean Ige · Walter & Marion Ikeda · Warren & Dorothy Imada · Helen Inazaki · June Ishii · John & Ann Ishikawa · Frederick Ito · Jan & Randall Iwase · Helen Iwatani · Jean Izu · Noboru Izumigawa · Lucretia Jaye · Lance Jayne · Amelia Jenkins · Janice Jones · Clifford & Aileen Kajiwara · Paddy & Yoshinori Kakiyama · Craig & Jan Kakiuchi · Jin Sook & Eugene Kaminaka · Sidney Kanazawa & Millicent Sanchez · Kinue Kanda · Mark & Alexis Kane · Aileen Kaneshiro · Bryce Kaneshiro · Karolyn Kaneshiro · Judith & Richard Kappenberg · Kikuyo Karimoto · Iris Kasashima-Pepper · Edmund & Deanna Kato · Keith Kato · Keith & Jean Katsuda · Richard & Jennie Kawasaki · Terrance Kelley · Quentin & Iris Kelsom · Gertrude Kihara · Rachel Kim · Charleen & Lawrence Kimata · Roy & Amy Kimura · Alice & Theodore Kishimori · Roberta & Wayne Kishinami · Yukio & Tsuyuko Kitagawa · Katherine & Paul Kiyabu · Wayne Kobayashi · Hisako Kodama · George & Esther Kodani · Tupou Koenig · Diane Koga · Randy Komatsu · Shelley & Glen Konishi · Melissa Kunitzer · Andrew & Mildred Kutsunai · Joanne & Scott Kuwada · Pepine Lauvao · Toetau Leauanae · Jane & David Lee · Soo Yeon Lee · Winchell & Lily Lee · Moana Leong · Aaron & Sharlene Levine · Fred Lewis · Matthew Liew · Juliette Ling · Sakae & Henry Loo · Kathleen Lopes · Walter (& The late Lola) Luke · Carol Lum · Shirley Lum · David & Nancy Lundsgaard · Flaviana Makahanaloa Dart · Cynthia & Carl Makino · Gertrude Makishima · George & Joan Masaki · Judith Matoi · Florence & Leland Matsuda · Roy & Mary Matsuda · Joan Matsukawa · Glen & June Matsumoto · Jerry Matsumoto · Robert & Edith Matsumoto · Stanley & Myrtle Matsumoto · Theolinda & Michael Matsumoto · Daniel McLaughlin · Patricia Melaku · Leonard & Diane Minami · Susan Minato · Carole Mitsuyoshi-Sugai & Raymond Sugai · Glenn & Elaine Miura · Steven & Gail Mizokawa · Kenneth & Lynette Mizuo · Eva Moravcik & Jeffrey Reese · Carri & John Morgan · Marilyn & Lyman Morikawa · Colin Morita · Takeshi & Ellen Moriwaki · Judy Muramoto · Robert & Sue Muranaka · Fusayo & Seichi Nagai · Marcia Nagao & Jeffrey Lim · Winifred Nagasako · Pauline Nagata, The late · Roberta & Ralph Nakamoto · Susan Nakamura · Lynn Nakamura-Tengan · Miles & Patricia Nakanishi · Alene Nakasone · Norma & George Nakasone · John Namba & Donna Nakamura · Charles & Julia Naumu · Valerie Nishida · Kenneth & Myrna Nishihara · Coleen Nitta · Debbie Nitta · Dennis & Norma Nouchi · Paul & Sue Nozaki · Evelyn & Donald Nugent · Winona Oato · John & Joyce O'Brien · Jan Ogino · William Ogle · Dennis & Naomi Ohta · Arthur & Betty Oishi · Daniel Okada & Pamela Kino · Teresa Okamoto · Jeannette Okazaki · Chad Okinaka · May Okinaka · Glenn Okino · Brian & Nadine Okumura · Bernice Ortiz · Roy & Frances Oshiro · Marie Otani · Gordon Ozawa · Norma Pang & John Burbach · Kerri Park · Thomas & Mary Parpana · Divina Pasion · Stephen Petro · Anthony & Marilyn Picard · Andrea Pujolar · Nancy Randall · Helen Rauer · Donna Reid-Hayes · Leslie Ringuette · Stacey & Robert Roberts · El Dora Robertson · Gail Rombaoa · Delcinda Saito & James Justo · Grace & Milton Saito · Elizabeth & Samuel Sakamaki · Lorene Sakamoto · Margaret & Robert Sakoeki · Atsuko & Kyle Sakumoto · Kent Saruwatari · Carrie Sato · Harold & Linda Sato · Janet Scott · Karen Segawa · Alethea Serna · Faye Shaver-Simons & Harry Simons · David Sherrill · Annette & Francis Sherry · Stella Shido · Paul & Wendy Shigeta · Geraldine Shimabukuro · Sandra Shimabukuro · Kuniaki & Lorraine Shimauchi · Eric & Cynthia Shimizu · Helen Shimoda · Bruce & Patricia Shimomoto · Debra Shiraishi-Pratt & Richard Pratt · Shirley Shiroma · Mary & Francis Shishido · Bruce Shultz · Jamie Simpson Steele · Lawrence & Sandra Siu · Barbara & Douglas Smith · Yonghua Song & Hua Chu · Rita Speitel · Joyce & Hardy Spoehr · Kathleen Sproles · Wendell Stallworth · Ann & Paul Sugibayashi · Dean Sugiyama · Michael & Carol Sullivan · Raymond & Hazel Sumile · Dora Sun · Kara Suzuka · Matthew Suzuki · Shawn & Susan Suzuki · Valerie Suzuki · Elaine & Calvin Tadaki · Carolyn Taguchi · Susan Taira · Karen & Philip Takaba · Roger Takabayashi · Nikki Takai · Kristine Takata · Kevin Takayama · Nancy & Gary Takiguchi · Leatrice Tam · Naomi Tanaka · Ellen & Thomas Tanoura · Beverley & John Tasato · Mika & Rodney Tateyama · Glenn & Linda Tatsuno · Christine Taylor · Robert Teichman & Geri Young · Janet Terada · Evelyn Teramae · Setsuko Teramoto · Brian & Faith Tokeshi · Michael Tokioka · Vivian Tom · Melissa & Steven Tome · W. Topp · Shelley & John Tsue · Lillian Tyau · Susan Tyau · Mark & Aileen Ueunten · Allen Umeda · Lloyd & Janis Uradomo · Kaeokulani Vasconcellos · Cynthia Von Flatern · Liane & Bruce Voss · Miles & Susan Wagner · Thelma Wakabayashi · Betty Wakai · Amy & Jerry Watanabe · Lynette Watanabe · Lisa Waters · Gordon & Julie Wee · William Weir & Juana Tabali-Weir · Cindy Werkmeister · Nancy White · Richard Will · Caroline & Lloyd Wong · Jacqueline Wong · Joni & Kingsley Wong · Myron & Janice Wong · Paul Yamaguchi · Naomi & Norman Yamamura · Brian & Susan Yamasaki · Charlene & Gil Yamashiro · Kenneth & Betty Yamashiro · June Yamashita · Russell Yamauchi · Shirley & Ronald Yanagisawa · Zijin Yang · Richard & Kay Yogi · Norman & Jane Yonamine · Etsuko Yoshino · Gwen & Steven Yoshizawa · Kevin & Pamela Young · Wyatt Young & Chelsea Hong-Young · Diane Yoza · Fay Zenigami · Joseph Zilliox



## INDIVIDUAL DONORS

### UP TO \$100

Jordan & Brandi Abe • Roanne Abe • Ann Adams • Cherrie Aiona • Brandy Akimo • Sharolyn Akuda • Steven & Lea Albert • Esther Amano • Amy Amuro • Ruby Anderson • Alan Angelo • Randal Aoki • Aileen Arashiro • Amy & Kenneth Asano • Mitzi Austin • Chantelle Awana • Geraldine & Nelson Awaya • Azti Nezia Azmi • Barbara Baker • Valerie Baldovi • Tierney Barcarse • Rosie Batallones • Aida Bayan • Taran Benevente • Jerry & Sue Bevacqua • Chaude Bonifacio • Barbara & Richard Bonnardel • Diana Bonsignore • Myra Borges • Kim Brennan • James Brightman • Mary & Philip Broms • Richard & Penelope Burniske • Bernice Buxbaum • Lani Carson • Alycia & Elvin Case • Kevin Chaitin • Clifford & Karen Chang • Frank & Lillian Chang • Jeanne Chang • Faye & Philip Chase • Phyllis Chee • Cynthia Ching • Stella Chow-Crouch • Loretta & Charles Chun • Robyn Chun & Steven Bobilin • Sarah & Peter Cole • Monica Coltharp • Lynn Dagli • Shari Daisy • Joy Davis • Barbara DeBaryshe • Emmanuel & Lynn del Rosario • Jane Dickson • Stanford & Lorraine Dobashi • Tina & Eser Domingo • Barbara Dougherty • Mapuana Dudoit • Marlyn Duldulao-Hutton & Thomas Hutton • Rene Egami • Molly Egged • Ariana Eichelberger • Sandra & Carl Endo • Estelle Enoki • Jenny & Eric Enomoto • David Ericson • Nicole Erlacher • Randall Esilit • Deanna & Solomon Espinas • Ann Evans • Lili Evensen • Stephen Fagan • Yu Fan • Kahea & Brian Faria • Susan & John Field • Todd Fleming • Linda Florendo • Kevynne Fountain-Pokipala • Debbie Frasco • Deborah & Gary Frasco • Silvia Frederick • Dexter & Dawn Freitas • Lurline Fujii • Henry & Carol Fujita • Kay Fukuda • Lorraine Fukuda • Jeffrey & Shirley Fukushima • Kathleen & Albert Fukushima • Lori Fulton • Myrna Fung • Lori & Michael Furoyama • Elizabeth Gabriel • William Geary • Nancy Geller • Leon Geschwind • Thomas & Mary Gething • Catherine Giamenelli • Carol Ginoza • Nancy Golden • Melissa Goo • Bow & Arthur Goto • Beverly & Joseph Grege • Janet Hadama • Natalie Haggerty • Patricia & Avelino Halagao • Wynn Hamano • Gunnar Hartner & Miki Hashizume • Gene & Marie Hashimura • Roxanne & Dean Hayase • Harry Hayler • Florenda Hermosura • Juliette & Robert Herodias • Kenrock Higa • Denise Higa-Ichimura • Lynn & Alton Higashi • Iris Higashi-Oshiro • Chieko Higuchi • Jessica Higuchi-Hernandez • Susan Hikichi • Lynn Hirashima • Leighton Hirata • Pamela Hirata • Phyllis & Ernest Hirata • Barbara Hiroshige • John & Barbara Hirota • Daniel Hoffman • Jayne Honda • Teresa Hood • Hsiu Han Hou • May Hoxie • John Hutton • Vinh Kien Huynh • Russell Ibera • Gail & Winford Ideue • Joyce Ige • Carolyn & Raymond Ikeda • Seongah Im • Joanne & Laurence Ing • Meredith Ing • Linda & Thomas Inlay • Leslie Inouye • Michael Ishizu • Kryssa Isobe • Shelley-Ann Ito • Sara Iwai • Lance Iwamoto • Beth Jalli • Joshua Jeong • Annette Jim • Robert & Bonnie Jinkens • Jill Kaaa • Ellen Kagen • Sue Kali • Sonia Kallstrom • Judy Kaminishi • Brenda Kanae • Keith & Velma Kaneshige • Alyssa Kapaona • Blaine Kashiwaeda • Donna Kautz • Joy & Bruce Kawachika • Robert & Sakae Kawaguchi • Evelyn Kawahara • Noah Kawano • Doreen & Larry Kelley • Luana Kelley • Anita & Jonathan Kelly • Helen & James Kim • Elaine & Roy Kimizuka • Judith Kimura • Karen Kinoshita-Martin & Robert Martin • Ryan Kishida • Lynn Kitamura • Daniela Kittinger • Bessie & Harry Kiyota • Dyan Kiyuna-Uchida • Rockey Knox • Pamela & Darin Kohara • Amy Kondo • Joyce Koontz • Ann Kosaka • Joy Kubota • Joan Kunimura • Anne & Randall Kuroda • Ann Kushiyama • Eric Kusunoki • Michie Kuwaye • Carol Jean Lam • Mildred Lau • Sherilyn Lau • Wan & Geoffrey Lau • Carrieann Lee • Charlis & Jack Lee • Clifford & Beverly Lee • Colleen Lee • Edwina & Wayson Lee • Maryanne Lee • Ona Lee & Sanford Yee • Sandra Lee & Steve Marsden • Mary Catherine Lennon • Susan Lim • Min Liu • Patricia Liu • Christine Loi • Carlton Lou • Melanie & David Lui • Anna Lee Lum • Gayle & Vincent Lum • Wilbur Luna • Yau Ho Janet Lyle • Carolyn MacDuff • Sapna Madia • Ann & Edwin Maeda • Gary Maeda • Janet & Richard Maeda • Leah Magana • Amber Makaiau • Robin-Gay Makapagal • Sokunthearith Makara • Adele Marple • Claire Masaki • Doris Masutomi • Sina Mataafa • Beth Matsuda • Joe & Florence Matsukawa • Elise Matsumoto • Irene Matsumoto • Vail Matsumoto • Joye Matsuno • Jean Matsuo • Colleen Matsuoka • Joan Matsuoka • Gaylene Matsuura • Lawrence McElheny • Paul McKimmy • James McKown • Natalie Mew • Maile Meyer • Milton & Susan Migita • Robin & Patricia Miller • Harold Mimaki • Herbert Minn • The late • Hubert Minn • Patricia & Edward Miyahira • Kristi Miyamae • Grace Miyamoto • Malyn Miyashiro • Genevieve Miyashita • Sumiko Mooko • Jenny Moon • Jeffrey & Kathleen Moore • Mac Neil Moresca • Karen Morioka • Avis & Richard Mortemore • Mario Munoz • Joann & Ernie Nagai • Lois Nagamine • Laura-Ann Nagata • Ayumi Naiole • Dawn Nakagawa • Wayne Nakagawa • Leila Nakamatsu • Lisa Nakamura • Mark Nakamura • Peter & Lynn Nakashima • Mindy Nakashima-Inouye & Dave Inouye • Lurline Naone-Salvador • George Naukana • Cynthia & Richard Nichols • Theron & Patricia Nichols • Jennifer Ninci • Jean & Thomas Nishi • Grace & Lionel Nishimura • Karen & Russell Nishimura • Dorothy & Lawrence Nitta • Janice Nitta • Sarah Noda • Mary Jo Noonan • Myrthel & Richard Ogasawara • Arlene & Wayne Ogata • Joyce Ogawa • Sharon Ogomori • Min Ok • Edward & Irene Okada • Marsha Okada • Betty & Matsuo Okamoto • Ronald & Bernice Okamura • Charlene & Stephen Okano • Sally Okimoto • Leslie Okoji • Neil Okuna • Carol Okutani • Jody Oliver • Dexter & Carolyn Onaga • Lynn & Dennis Onaga • Jane Onigama • Kaaren Onouye • Matthew Ornstein • Lillian Oshiro • Sandra Otake • Joanne Oyama • Josephine Pablo • Jennifer Padua • Joan Paleka • Carol & Gordon Pang • Stephen & Sandra Park • Scot & Maile Parry • Claire & George Pearce • Julie Peters • Stacie Phasouk • Joanna Philippoff • Antonette & Richard Port • Tyler Quertermous • Geraldine Quinn • Dymian Racoma • Jedd Ramos • Rosemarie Ramos • Kavita Rao • Delorse Rapoza • Ronald & Lisa Rapozo • Deanna Rasmussen • Katherine Ratliffe • Darrylyn & Daniel Rawlins • Misty Ann Reeves • Claudette Reid • Tami Renard-Niles • Sharon Rengill • Carlene & Anthony Reyna • Sanam Rezazadeh • Leanne & Ian Riseley • Juan Rivera • Meilene Roco • Katherine & James Rothschild • Lois Ruck • Ellen Saiki • Steven & Elaine Saiki • Beatrice & Joseph Sailer • Eunice Saito • Jane Sakakihara • Richard & Patsy Sakamoto • Rhoda & Tadashi Sakurai • Keith Sarkisian • Diane Sasaki • Iwalani Sato • Alvin & Susan Satogata • Ellen Sato-Lum & Randall Lum • Jane Sayles • Nanette Schonleber • Carol Schrader • Sunshine Sebastian • Sharon Seifert • Lynette & Edward Sekioka • Karen Seward • Thomas & Sharon Seymour • Gordon & Shirley Shiba • Mary Shimizu • Michael & Cheryl Shintani • Jeffrey Shitaoka & Kristy Kakazu-Shitaoka • Eugene & Carole Shizuru • Theodore Silva • Ruhiiyih Smits • Karen & Kevin Snyder • Charis-Ann Sole • Aileen Soma • Kathy Souza • Elizabeth Stanton-Barrera • Susan & Rick Steiner • Christine Strobel • Robert & Nathalie Stubbs • Daniel Sturm • Vicki Suemori • Hilda & Fusao Sugai • Paul & Judy Suyama • Cynthia & Ken Suzuki • Angela Sy • Eiko Ta • Coleen Taaca • Dawn & Glenn Takahashi • Joy Takara • Grant & Jan Takasaki • Carole Takehara • Carole & Kenneth Takushi • Lynn Tamayoshi • Lorraine Tani • Masahiko & Karen Taniguchi • Geraldine Tanoue • Lynda Tarantino • Todd & Amy Tashiro • Alex Teece • Eunice Terada • Sweeny Term • Johnny Thorsen • Katherine Tibbetts • Kinisimere Tokailagi • Nancy Tokita • Wendy & Rockne Tokumine • Beverly Tom • Margaret & Dennis Tom • Coleen Toma • Susan & John Tomoso • Faith Tomoyasu • Betsy Tonda • Eunice Tong • Valerie Torikawa-Domingo • Fay Toyama • Jean Tsuda • Tsuyoshi Tsurumi • Sandra Tuitele • Marjorie Tupper • Jerry Turner • Kathryn & Tom Tyler • Arlene Uchimura • Carolyn Uchiyama • Juli Umetsu • Eileen Usagawa • Dorothy & Jensen Ushijima • Teri Ushijima • Miles & Lorraine Uyeda • Yoshiko & Roy Uyeda • Lisa Uyehara • Shirlene & Richard Uyehara • Jane & Harold Uyeno • Joyce & Kenneth Van Belkum • Leilani Vierra • Bessie & Ronald Wada • Christine Wada • Tomoko Wadzinski • Ruth Walker • Gerald Wallace • Colleen Wallis • Shareef Wang • Lori Ward • Susan Watabayashi • Jenny Wells • Toni & Rick Wilson • Elinor Wolff • Alan Wong • Aline Wong • Jean Wong • Kathrine Wong • Marilyn & Ronald Wong • Patricia Wrath • Craig Yamada • Lisa Yamada • Myra & Reggie Yamada • Nancy Yamada • Brent & Lynette Yamagata • Annette & Melvin Yamaki • June & Gerald Yamamoto • Roy & Janis Yamamoto • Ellen & Danny Yamamura • June Yamanuha • Cherie Yamashiroya • Lois Yamauchi & Tracy Trevorrow • Eloise Yano • Fumio Yano • Karen & Robert Yano • Mark Yap • Arlene Yee • Un-Ok Yi • Steven Yonomizo • Esther Yokoyama • Karen Yoneda • Chihoko Yosemori • Cindy & Howard Yoshida • Patricia Yoshikawa • Katherine Yoshimura • Jon Yoshioka • Lynn Yoshitsugu • Candace Young • Waynele & Colin Yu • Gail Yuen • Laurie Zane

# Scholarship Recipients July 2018 – June 2019

## **Alexander Poki Kali Memorial Scholarship**

Rebecca Kapolei Kiili

## **Andrew W. S. & Jennie L. In Scholarship for Graduate Study**

Derek Michael Beeler  
Pamela R. Kohara  
Paula R. Ulloa

## **Au & Hew Family Scholarship**

Talima Gututala

## **Bank of Hawaii Endowed Scholarship**

Shaundra Kealoha Condren-Migliorato

## **College of Education Alumni Association Endowed Scholarship**

Daniel Liloa Pavao  
Kayla Yuri Ueshiro

## **College of Education General Scholarship**

Malia K. Ah Nee  
Charwin Kenneth Andaya  
Vera Liane M G Blalock  
Tatiana Francoise Marama Chauvet-Martin  
Skye Aric Kalewa Correa  
Criver Ivey Guevara Cruz  
Deja Kamahiehieokala Daniel-Richards  
Robin Emily Meisler Dazzeo  
Kyle Peter Detke  
Stephanie Arleen Frank  
Candice S. Frontiera  
Tyrone Marcel Gadson  
Ronda Shizuko Hayashi-Simpliciano  
Sterling RY Higa  
Kristin Ashley Jones  
Sheena Carmela Bumanglag Juliano  
Eric Shigeo Kobayashi  
Leila Aulike Natasha Latorre  
Jerusha Nanea Puanani Magalei  
Arania Maria Manumaleuna  
Eduard Merc  
Theodore John Mura  
Leni Michi Nakao-Yamada  
Karly Matsuko Pagtulingan  
Natalie Katelyn Perez  
Dustin Telly Platter  
Nicole Maile Santos  
Nicole Schlaack  
LaJoya Reed Shelly  
Elizabeth Anne Simon  
Jolene Mieke Siu  
Heather Akemi Shiroma Tabios  
Alex Teece

Jason Hong Tran  
Yu-Chieh Wu  
Keaton Hamilton Yaw

## **Colonel Willys E. Lord, DVM & Sandina L. Lord Scholarship**

Dan Kavin Agcaoili Agbayani  
Malia Janae Dawson  
Zechariah Stephen Deloach  
Shawn Ikaika Diocares  
Joy Marie Marcelino Dugay  
Paige Antoinette Edwards  
Teyanni Jazlynn Alejandro Esaki  
James Kawika Gaufer  
Courtney Makanalani Goo  
Haley Natsue Hamamura  
Joshua Baron Harrison  
Joseph Kamakua Iseri  
Mikaylah K. Kaohu  
Eric Luo  
Alex Richard McLaury  
Shannon Grace Michel  
Joy Fujie Nakamoto  
Anella Jennel Aslor Palacpac  
Savannah Jade Rapp  
Noah Relova  
David Si-Jun Rew  
Yasmin Ilanit Saban  
Gaea Luisa Abello Salazar  
Daniel Masayoshi Shimoda  
Melanie Noriko Shiraki  
James Eaton Short  
Lindsay Margaret Sierant  
Jade Kendig Steele  
Nicolas K. Vierra

## **Cornelia F. and Roy Sakamoto Scholarship**

James Pol Tabucbuc Balicao  
Dana Elaine Tazuko Goya  
Katie Morgan Hearl  
Cherilyn Mayumi Inouye  
Yuriria McCloskey  
Roxane K. Stewart  
Brandon A. Veles

## **Dorothy M. Kahananui Scholarship in Music Education**

Richard Gumsat Akamine  
Aoi Michelle Shinagawa

## **Edith Ling Louis & James Lun Louis Scholarship**

Jolene Mieke Siu

## **Ellen Tom & Chow Loy Tom Endowed Scholarship**

Gina Jin-Ah Hyun  
Scott Tsubasa Okamura  
Jennifer LeAnne White

## **Esther M. Sato & Jean M. Sakihara Scholarship Endowment in Memory of Loren I. Shishido**

Arlene Janna Colis  
Melisange Ouellet Beaucaire

## **Evelyn Siu Foo Scholarship in Early Education**

Leila Aulike Natasha Latorre

## **Frances M. J. & Alexander L. Pickens Scholarship in Secondary Education**

Tiffany Wittich Hayler

## **Frank B. Brown Memorial Scholarship**

Sarah Toleafoa Paunga

## **Harry C. & Nee-Chang Wong Foundation Endowed Scholarship**

Kristy Kimie Arakawa  
Chantelle Kiyoko Bjorn  
Giglia Ann Goochey  
Deanna June Kawelo Kackley  
Kristy Pomaika'i Kamoku  
Denton Satoshi Mizumoto  
Ronald Kaipo Santos  
Dayna M. Taketa

## **Hawaiian Telcom Math & Science Scholarship**

Heejin Yang

## **Hazel Van Allen Scholarship in Teacher Preparation**

Jayleen Christina Barino  
Brittany Dejanae Everage

## **Henry & Dorothy Castle Memorial Early Childhood Education Scholarship**

Abby Rae WM Chung-Hoon  
Aubrey Miyoko Ohaikaloha Fortuno  
Danielle Carlos Hipol  
Chloe Suzanne Murphy  
Malia Valerie Pimentel  
Aladdin Peter Roque-Dangaran  
Shelby Adrienne Gabriella Emi  
Sato Perreira  
Mollie O'Connor Taylor

**Hiroaki, Elaine & Lawrence Kono Memorial Endowed Scholarship**

Bronson Edward Kahale Lau  
Koa Kahananui  
Grace J. Morita

**James & Abigail Campbell Family Foundation Scholarship in Teacher Education**

Christopher K. Akana  
Isel Marievic Barba  
Tierney O. Barcarse  
Ma Esperanza Bumatay Fortez  
Rachel Satsuki Jones  
Kelli Kiyome Kajiwara  
Anna Marie Pascua Marcos  
Natalie Katelyn Perez  
Kimberlee Kawena Peterson  
Melanie Akemi Pokakaa  
Jesslynn Haunani Preston  
Shawnee Belinda Ragil  
Chelsie Joy Anna Sen  
Eleanor Marie Robins Stineman  
Ronnie Marie Tiffany-Kinder  
Shirley Mina Yamauchi  
Travis Kekai Young

**James I. & Ella M. (Ohta) Tomita Endowed Scholarship**

Chaylin Kimiko Mizuuchi  
Braiden E. Paa

**Joseph & Sumie Kaneshiro Bishop Scholarship**

Tatiana Francoise Marama  
Chauvet-Martin  
Kasey Naomi Pacheco

**Kathryn Au Shen Endowed Fund**

Danielle Maria Moss

**Kenneth and Laura Onomoto Miyoshi Scholarship**

Haley Marie Beaumont

**Margaret T. Ohta Scholarship for Elementary Education**

Toni Leigh Hoberecht

**Mary Tenney Castle Memorial Graduate Fellowship**

Jocelyn Noelani Aipa  
Rodena May Akiu  
Alana Mei Lin Ducroix Miyamoto  
Brie Kawehiokalani Machiko Fukumoto  
Bonnie Jayne Green  
Tiffany Kay Katsumi Hirota  
Corinne Chiemi Suwa Kalani  
Emiko Kurosawa-Arakaki

Ariel Rochelle Mateo  
Lauren Kei Moriguchi  
Jeannie Jin Yi Pyun  
Mary Annyvette Saguid  
Charis-Ann Frances U. Sole  
Melanie Soma

**Patricia B. Lopes Memorial Scholarship Endowment in Elementary Education**

Kelly Michael Zalopany

**Pearl N. & Paul T. Yamashita Scholarship in Special Education**

Toni Yasuko Oyama

**Peter & Patricia A. Dunn-Rankin Scholarship**

Klavdija Zorec

**Robert L. and Brigitte M. Campbell Scholarship in Science Education**

Alexa J. Nelson

**Royal T. & Aurora A. Fruehling Fellowship-Graduate Study**

Alyssa Nicole Bruns

**Scholarship in Special Education**

Breeana Lehua Wolff

**Special Education Aid Fund**

Sharon S. Weeks

**Stanley and Agnes Ing Family Scholarship**

Adriann Lokelani Au  
Sierra Kaleilaniokukahi Johnson-Settles  
Kylie Michiko Kamalei Maemori-Yoshida  
Korey Yoshio Ogomori  
Jenna Chizuko Paranada  
Shelby Kauanahemaikalani  
Rumiko Schwartz  
Emree Sazuko Kealohilani Tulba  
Kayla Yuri Ueshiro  
Ciara Wainani Welch

**Stella Lau In Memorial Scholarship**

Alyssa Michiko Omonaka

**Stephanie Feeney Scholarship in Early Childhood Education**

Heather Ann Robison

**Sushil and Birendra Huja Education Scholarship**

Timothy Andrew Barth  
Haley Paige Scott  
Ronnie Marie Tiffany-Kinder

**Teruo & Violet Ihara Scholarship**

Andrea Leah Ching

**The Daeufer Family Scholarship**

Fumi Jamie Koizumi-Droge  
Wilson Dai Pham  
Jaimy Villa Valerio

**The Sibyl Nyborg Heide Scholarship**

Leanna Marie Agustin  
Kailey Anne Kurashige

**The Takasuke and Tome Nomura Family Scholarship**

Peter Hengyao Han  
Hannah Sha Le He Yan Sinclair

**Tokuji & Toshiko Ono Endowed Scholarship in Education**

Sheena Carmela Bumanglag Juliano

**Toshiko & Shiro Amioka Scholarship for Excellence & Achievement**

Michaela Aulii Souza Bulger  
Erika Kim  
Cathleen Kuang

**William Randolph Hearst Scholarship**

Laura Joan Goodrich Maier  
Kawehionalani Kiyeko Goto  
Chanelle Kau'i'uali'ilani Kalama-Oliveira  
Zellie Liana Kamahela  
William London Thompson  
Krisdee Kinohiokala Ann Van Gieson

**Yoshiaki & Asako Furuya Nakamoto Scholarship for Undergraduate Study**

Robert Kaaumoana Bradley

**Yoshimitsu Takei Family Endowed Scholarship**

Laura Akemi Ambrosechhio

**Yuriko K. and Cheong Lum Scholarship**

Kaluhikauahemakanamaikalani  
Blythe Kaapana  
Wendan Li  
Ayami Sato  
Jenelle Ai Leinani Schramm  
Jennifer Lotus Solmirin  
Leah Eleanor Spreckelmeyer  
Youxin Zhang

# COE Organization

## 2019 COE ADVISORY COUNCIL

### **Harold K.L. Castle Foundation**

Terrence George, President and CEO

### **Hawai'i Afterschool Alliance Steering Committee**

Diane Tabangay, Chair

### **Hawai'i Association of Independent Schools**

Phil Bossert, Executive Director

### **Hawai'i Board of Education**

Catherine Payne, Chairperson

### **Hawai'i Business Roundtable**

Gary Kai, Executive Director

### **Hawai'i Children's Action Network**

Deborah Zysman, Executive Director

### **Hawai'i Department of Education (HIDOE)**

Cindy Covell, Assistant Superintendent  
Christina Kishimoto, Superintendent  
Phyllis Unebasami, Deputy Superintendent

### **HIDOE Principals, Bargaining Unit 06**

Derek Minakami, President and Kāne'ohe Elementary School Principal

### **Hawai'i Government Employees Association**

Mark Yap, Director of Bargaining Unit 08

### **Hawai'i P-20 Partnerships for Education**

Stephen Schatz, Executive Director

### **Hawai'i Parent Teacher Student Association**

Patti Rabacal, Vice President of Leadership

### **Hawai'i State Teachers Association**

Wilbert Holck, Executive Director  
Corey Rosenlee, President

### **Hawai'i Teachers Standards Board**

Lynn Hammonds, Executive Director

### **Kamehameha Schools, Strategy & Innovation Group**

Shawn Malia Kana'iaupuni, Executive Strategy Consultant

### **Office of Hawaiian Affairs**

Lisa Watkins-Victorino, Interim COO

### **Pacific Resources for Education & Learning**

Paul Hadik, President and CEO

### **The Learning Coalition**

Gale Meija, Program Officer

### **University of Hawai'i (UH) Community Colleges**

John Morton, Vice President

### **UH Professional Assembly**

Kristeen Hanselman, Executive Director

### **UH State Office for Career and Technical Education**

Bernadette Howard, State Director

### **UH Mānoa (UHM) College of Education (COE)**

Amelia Jenkins, Associate Dean for Academic Affairs  
Nathan Murata, Dean / Chair of Advisory Council

### **UHM COE Alumni Association**

Helen Hasegawa, President

### **UHM COE Congress and Senate**

Paulette Yamada, Chair

### **UHM COE Doctoral Student Association**

Mark McCormick, Chair

### **UHM COE Master Student Association**

Yuko Ida, President

### **UHM COE Retirees Group**

Virgie Chattergy, Convener

### **UHM COE Student Association**

Shelby Schwartz, President

### **UHM College of Social Sciences**

Denise Eby Konan, Dean

### **UHM College of Tropical Agriculture and Human Resources**

Nicholas Comerford, Dean

## RESEARCH UNITS

### CENTER ON DISABILITY STUDIES

**Patricia Morrissey**, Director  
(808) 956-2065  
pmorris@hawaii.edu

### CURRICULUM RESEARCH & DEVELOPMENT GROUP

**Barbara Dougherty**, Director  
(808) 956-4939  
bdougher@hawaii.edu

## SUPPORT UNITS

### COLLEGE DEVELOPMENT & ALUMNI RELATIONS

**Mark Fukeda**, Director  
(808) 956-7988  
mfukeda@hawaii.edu

### OFFICE OF STUDENT ACADEMIC SERVICES

**Denise Nakaoka**, Director  
(808) 956-7915  
nakaoka@hawaii.edu

#### **Puahia Program:**

Support for Emerging Educators

#### **Pu'uhonua:**

Hale for Native Hawaiian Student Support

#### **Tinalak:**

Filipino Education Advisory Council

### TECHNOLOGY & DISTANCE LEARNING PROGRAMS

**Paul McKimmy**, Director  
(808) 956-5776  
mckimmy@hawaii.edu

## ACADEMIC DEPARTMENTS

### CURRICULUM STUDIES

**Patricia Halagao**, Chair  
(808) 956-9295  
phalagao@hawaii.edu

### EDUCATIONAL ADMINISTRATION

**Ronald Heck**, Chair  
(808) 956-4117  
rheck@hawaii.edu

### EDUCATIONAL FOUNDATIONS

**Xu Di**, Chair  
(808) 956-0480  
xudi@hawaii.edu

### EDUCATIONAL PSYCHOLOGY

**Katherine Ratliffe**, Chair  
(808) 956-4281  
ratliffe@hawaii.edu

### EDUCATIONAL TECHNOLOGY

**Curtis Ho**, Chair  
(808) 956-7771  
curtis@hawaii.edu

### INSTITUTE FOR TEACHER EDUCATION

**A. Ku'ulei Serna**, Director, Elementary Education  
(808) 956-4412  
kserna@hawaii.edu

**Charlotte Frambaugh-Kritzer**, Director, Secondary Education

(808) 956-2749  
kritzer@hawaii.edu

**Jon Yoshioka**, Director, Master of Education in Teaching

(808) 956-7989  
jonyoshi@hawaii.edu

### KINESIOLOGY & REHABILITATION SCIENCE

**Jan Prins**, Chair  
(808) 956-4844  
jprins@hawaii.edu

### SPECIAL EDUCATION

**Mary Jo Noonan**, Chair  
(808) 956-5599  
noonan@hawaii.edu