

09/08/99

CONTRACT NO.: DA00257 WBS ELEMENT: 2016CPT.01.01.20722.1, ETC.

TYPE OF WORK: RESURFACING

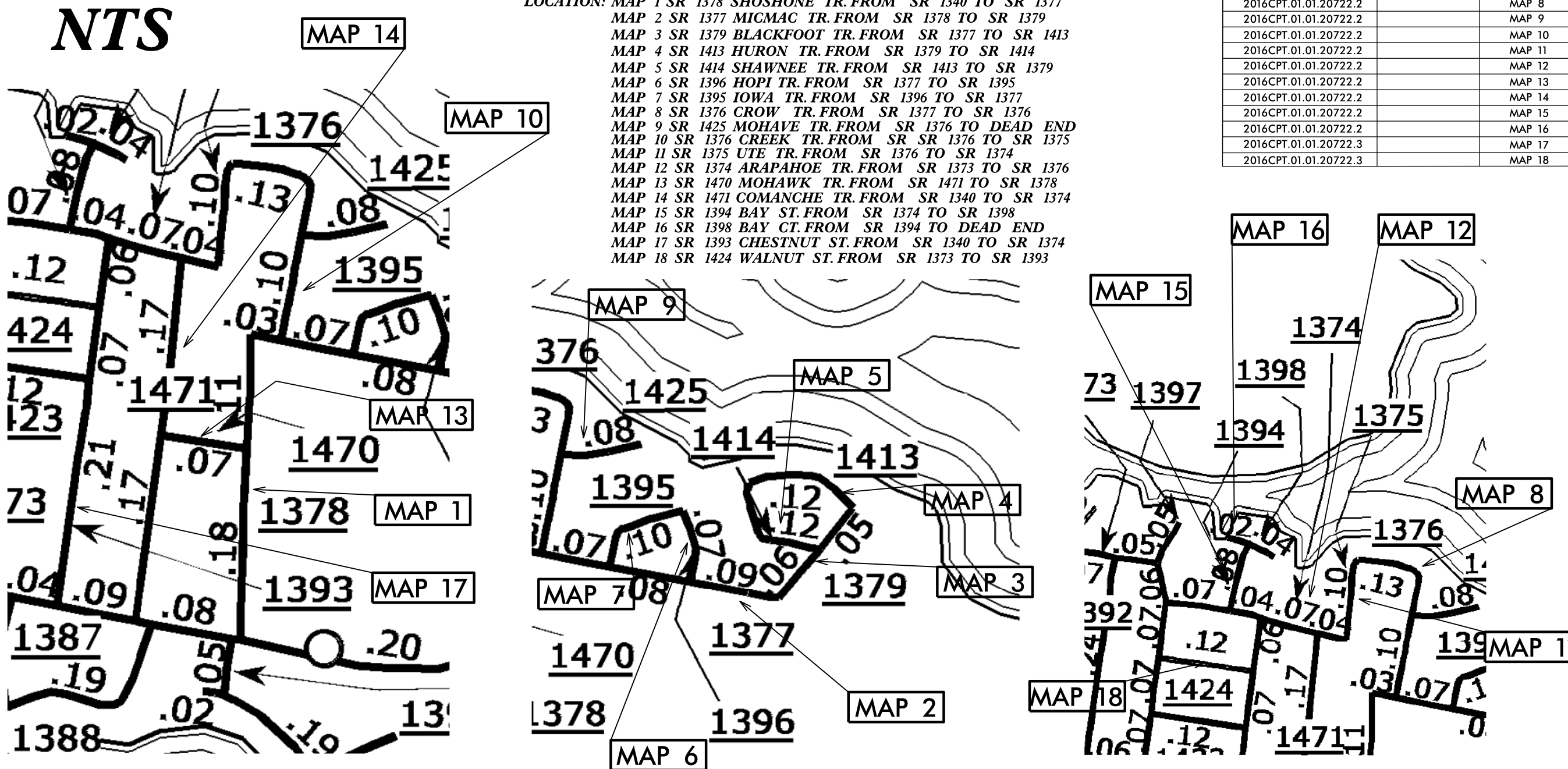
SNUG HARBOR

STATE OF NORTH CAROLINA
DIVISION OF HIGHWAYS

PERQUIMANS COUNTY

LOCATION: MAP 1 SR 1378 SHOSHONE TR. FROM SR 1340 TO SR 1377
 MAP 2 SR 1377 MICMAC TR. FROM SR 1378 TO SR 1379
 MAP 3 SR 1379 BLACKFOOT TR. FROM SR 1377 TO SR 1413
 MAP 4 SR 1413 HURON TR. FROM SR 1379 TO SR 1414
 MAP 5 SR 1414 SHAWNEE TR. FROM SR 1413 TO SR 1379
 MAP 6 SR 1396 HOPI TR. FROM SR 1377 TO SR 1395
 MAP 7 SR 1395 IOWA TR. FROM SR 1396 TO SR 1377
 MAP 8 SR 1376 CROW TR. FROM SR 1377 TO SR 1376
 MAP 9 SR 1425 MOHAVE TR. FROM SR 1376 TO DEAD END
 MAP 10 SR 1376 CREEK TR. FROM SR 1376 TO SR 1375
 MAP 11 SR 1375 UTE TR. FROM SR 1376 TO SR 1374
 MAP 12 SR 1374 ARAPAHOE TR. FROM SR 1373 TO SR 1376
 MAP 13 SR 1470 MOHAWK TR. FROM SR 1471 TO SR 1378
 MAP 14 SR 1471 COMANCHE TR. FROM SR 1340 TO SR 1374
 MAP 15 SR 1394 BAY ST. FROM SR 1374 TO SR 1398
 MAP 16 SR 1398 BAY CT. FROM SR 1394 TO DEAD END
 MAP 17 SR 1393 CHESTNUT ST. FROM SR 1340 TO SR 1374
 MAP 18 SR 1424 WALNUT ST. FROM SR 1373 TO SR 1393

STATE	STATE PROJECT REFERENCE NO.	SHEET NO.	TOTAL SHEETS
N.C.	2016CPT.01.01.20722.1, ETC.	1	7
STATE PROJ. NO.	F.A. PROJ. NO.	DESCRIPTION	
2016CPT.01.01.20722.1		MAP 1	
2016CPT.01.01.20722.1		MAP 2	
2016CPT.01.01.20722.1		MAP 3	
2016CPT.01.01.20722.1		MAP 4	
2016CPT.01.01.20722.1		MAP 5	
2016CPT.01.01.20722.1		MAP 6	
2016CPT.01.01.20722.1		MAP 7	
2016CPT.01.01.20722.2		MAP 8	
2016CPT.01.01.20722.2		MAP 9	
2016CPT.01.01.20722.2		MAP 10	
2016CPT.01.01.20722.2		MAP 11	
2016CPT.01.01.20722.2		MAP 12	
2016CPT.01.01.20722.2		MAP 13	
2016CPT.01.01.20722.2		MAP 14	
2016CPT.01.01.20722.2		MAP 15	
2016CPT.01.01.20722.2		MAP 16	
2016CPT.01.01.20722.3		MAP 17	
2016CPT.01.01.20722.3		MAP 18	



PROJECT LENGTH

LENGTH OF ROADWAY PROJECT MAP 1 = 0.28 MI.
 LENGTH OF ROADWAY PROJECT MAP 2 = 0.28 MI.
 LENGTH OF ROADWAY PROJECT MAP 3 = 0.11 MI.
 LENGTH OF ROADWAY PROJECT MAP 4 = 0.12 MI.
 LENGTH OF ROADWAY PROJECT MAP 5 = 0.11 MI.
 LENGTH OF ROADWAY PROJECT MAP 6 = 0.08 MI.
 LENGTH OF ROADWAY PROJECT MAP 7 = 0.10 MI.
 LENGTH OF ROADWAY PROJECT MAP 8 = 0.15 MI.
 LENGTH OF ROADWAY PROJECT MAP 9 = 0.08 MI.

LENGTH OF ROADWAY PROJECT MAP 10 = 0.08 MI.
 LENGTH OF ROADWAY PROJECT MAP 11 = 0.09 MI.
 LENGTH OF ROADWAY PROJECT MAP 12 = 0.29 MI.
 LENGTH OF ROADWAY PROJECT MAP 13 = 0.08 MI.
 LENGTH OF ROADWAY PROJECT MAP 14 = 0.34 MI.
 LENGTH OF ROADWAY PROJECT MAP 15 = 0.08 MI.
 LENGTH OF ROADWAY PROJECT MAP 16 = 0.05 MI.
 LENGTH OF ROADWAY PROJECT MAP 17 = 0.34 MI.
 LENGTH OF ROADWAY PROJECT MAP 18 = 0.11 MI.

Prepared in the Office of:
DIVISION OF HIGHWAYS

113 Airport Dr., Edenton NC, 27932

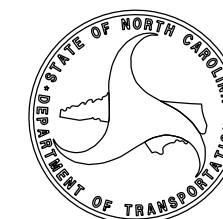
2012 STANDARD SPECIFICATIONS

LETTING DATE:

W. B. HOBBS, P.E.
DIVISION PROJECT MANAGER

C. E. SLACHTA
DIVISION PROPOSALS ENGINEER

DIVISION OF HIGHWAYS
STATE OF NORTH CAROLINA



DRAWN BY: JWC

CONTRACT NO.: DA00257 WBS ELEMENT: 2016CPT.01.01.20722.1, ETC.

STATE OF NORTH CAROLINA
DIVISION OF HIGHWAYS

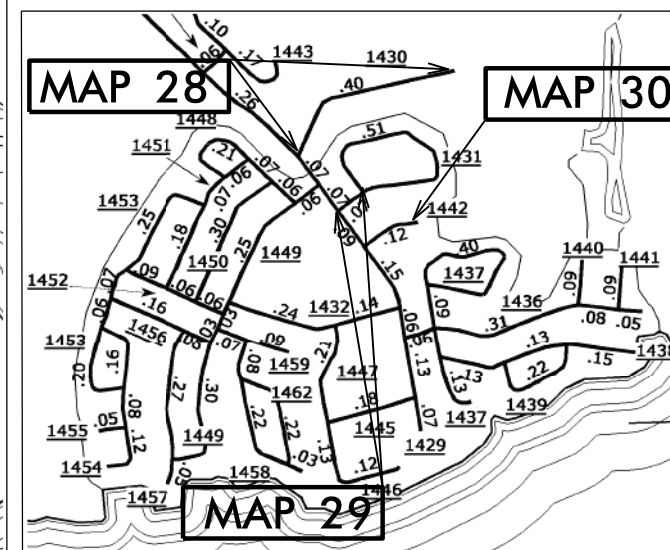
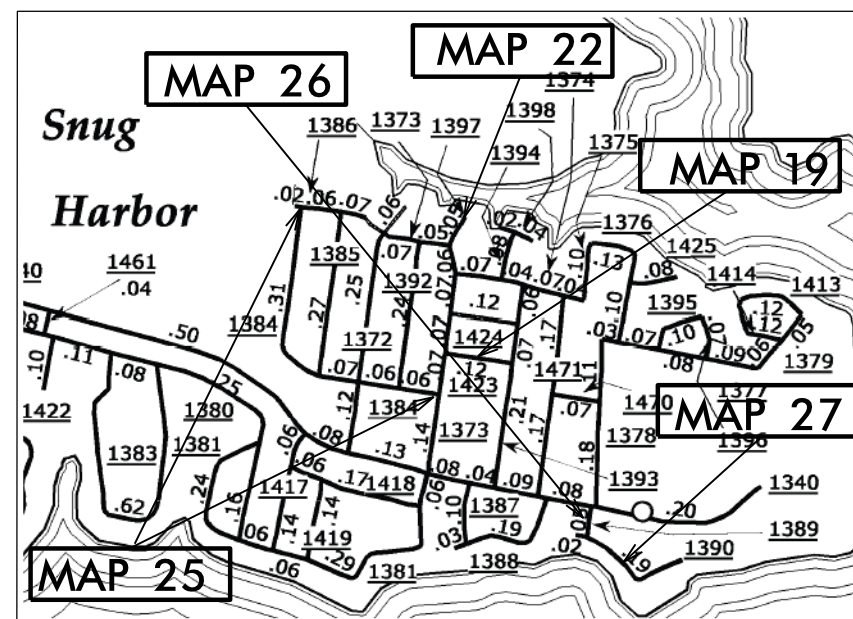
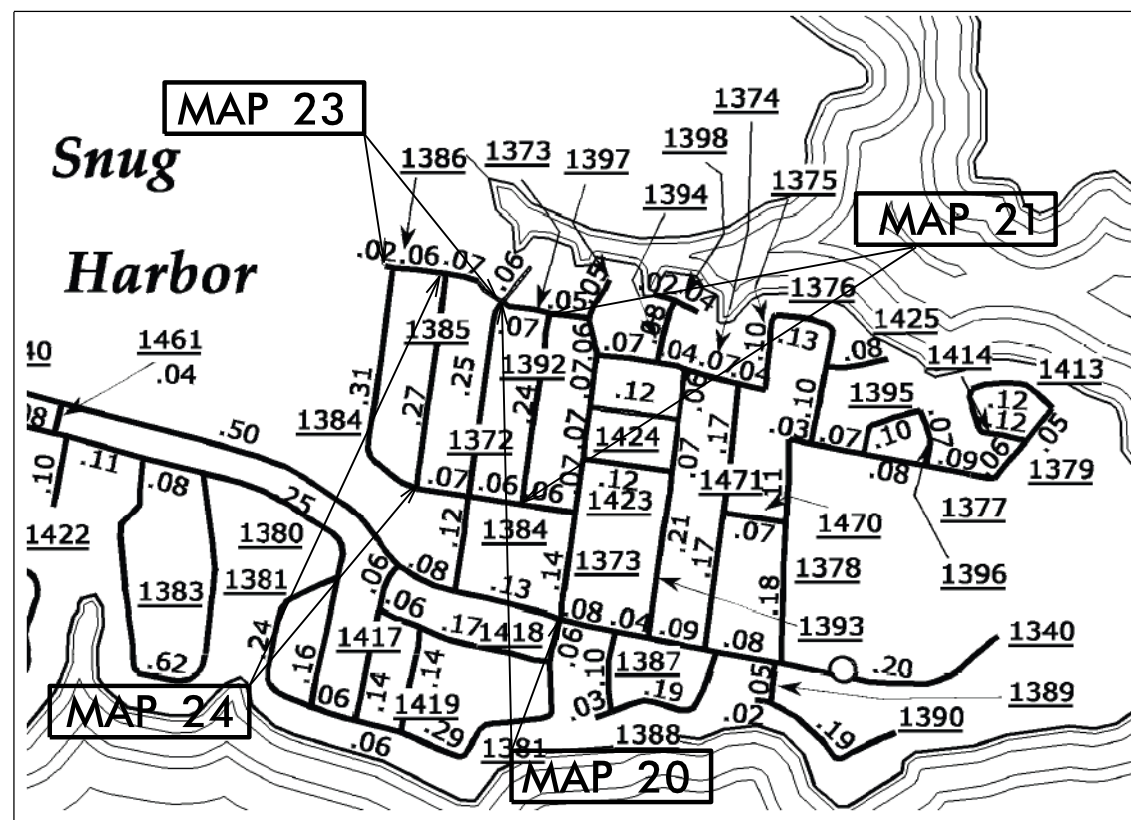
PERQUIMANS COUNTY

NTS

LOCATION: MAP 19 SR 1234 COTTONWOOD ST. FROM SR 1373 TO SR 1393
 MAP 20 SR 1373 HOLLY ST. FROM SR 1340 TO SR 1372
 MAP 21 SR 1392 LAUREL ST. FROM SR 1384 TO SR 1373
 MAP 22 SR 1397 HOLLY ST. FROM SR 1373 TO DEAD END
 MAP 23 SR 1386 BYRD ST. FROM SR 1372 TO DEAD END
 MAP 24 SR 1385 CLARK ST. FROM SR 1384 TO SR 1386
 MAP 25 SR 1384 FIR ST. FROM SR 1373 TO 1386
 MAP 26 SR 1389 YEOPIM TRAIL FROM SR 1340 TO SR 1390
 MAP 27 SR 1390 NAVAJO TRAIL FROM SR 1389 TO DEAD END
 MAP 28 SR 1430 DISCOVERY TRAIL FROM SR 1429 TO DEAD END
 MAP 29 SR 1431 EAST INLET CIRCLE FROM SR 1429 TO SR 1431
 MAP 30 SR 1442 PIRATE LANDING FROM SR 1429 TO CUL-DE-SAC

TYPE OF WORK: RESURFACING

STATE	STATE PROJECT REFERENCE NO.	SHEET NO.	TOTAL SHEETS
N.C.	2016CPT.01.01.20722.1, ETC.	2	7
STATE PROJ. NO.	F.A. PROJ. NO.	DESCRIPTION	
2016CPT.01.01.20722.3		MAP 19	
2016CPT.01.01.20722.3		MAP 20	
2016CPT.01.01.20722.3		MAP 21	
2016CPT.01.01.20722.3		MAP 22	
2016CPT.01.01.20722.3		MAP 23	
2016CPT.01.01.20722.3		MAP 24	
2016CPT.01.01.20722.3		MAP 25	
2016CPT.01.01.20722.4		MAP 26	
2016CPT.01.01.20722.4		MAP 27	
2016CPT.01.01.20722.5		MAP 28	
2016CPT.01.01.20722.5		MAP 29	
2016CPT.01.01.20722.5		MAP 30	



PROJECT LENGTH

LENGTH OF ROADWAY PROJECT MAP 19 = 0.11 MI.
 LENGTH OF ROADWAY PROJECT MAP 20 = 0.50 MI.
 LENGTH OF ROADWAY PROJECT MAP 21 = 0.25 MI.
 LENGTH OF ROADWAY PROJECT MAP 22 = 0.06 MI.
 LENGTH OF ROADWAY PROJECT MAP 23 = 0.17 MI.
 LENGTH OF ROADWAY PROJECT MAP 24 = 0.27 MI.

LENGTH OF ROADWAY PROJECT MAP 25 = 0.52 MI.
 LENGTH OF ROADWAY PROJECT MAP 26 = 0.05 MI.
 LENGTH OF ROADWAY PROJECT MAP 27 = 0.20 MI.
 LENGTH OF ROADWAY PROJECT MAP 28 = 0.41 MI.
 LENGTH OF ROADWAY PROJECT MAP 29 = 0.58 MI.
 LENGTH OF ROADWAY PROJECT MAP 30 = 0.12 MI.

Prepared in the Office of:
DIVISION OF HIGHWAYS
 113 Airport Dr., Edenton NC, 27932

2012 STANDARD SPECIFICATIONS

LETTING DATE: _____

W. B. HOBBS, P.E.
 DIVISION PROJECT MANAGER

C. E. SLACHTA
 DIVISION PROPOSALS ENGINEER

DIVISION OF HIGHWAYS
 STATE OF NORTH CAROLINA

CONTRACT NO.: DA00257 WBS ELEMENT: 2016CPT.01.01.20722.1, ETC.

NTS

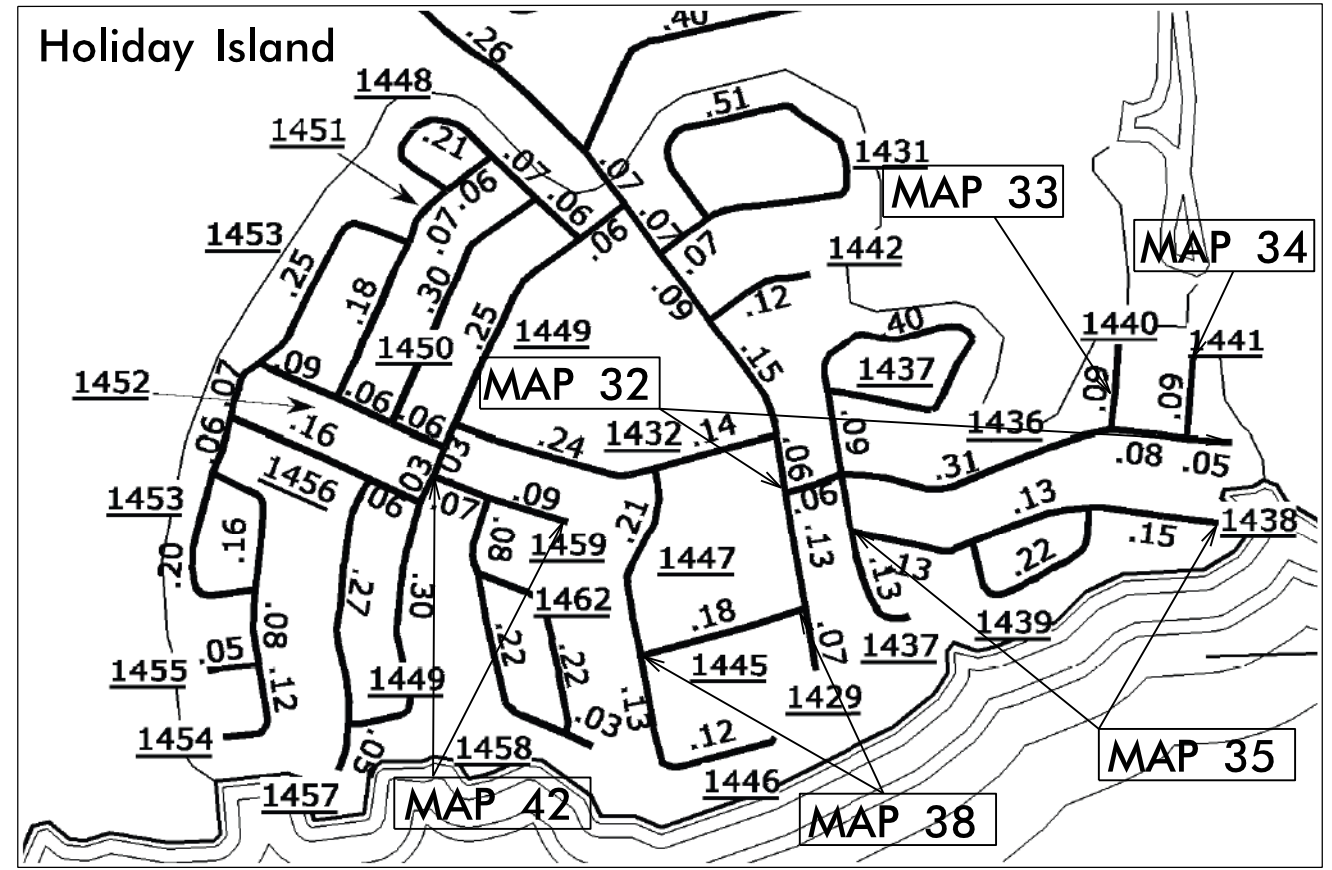
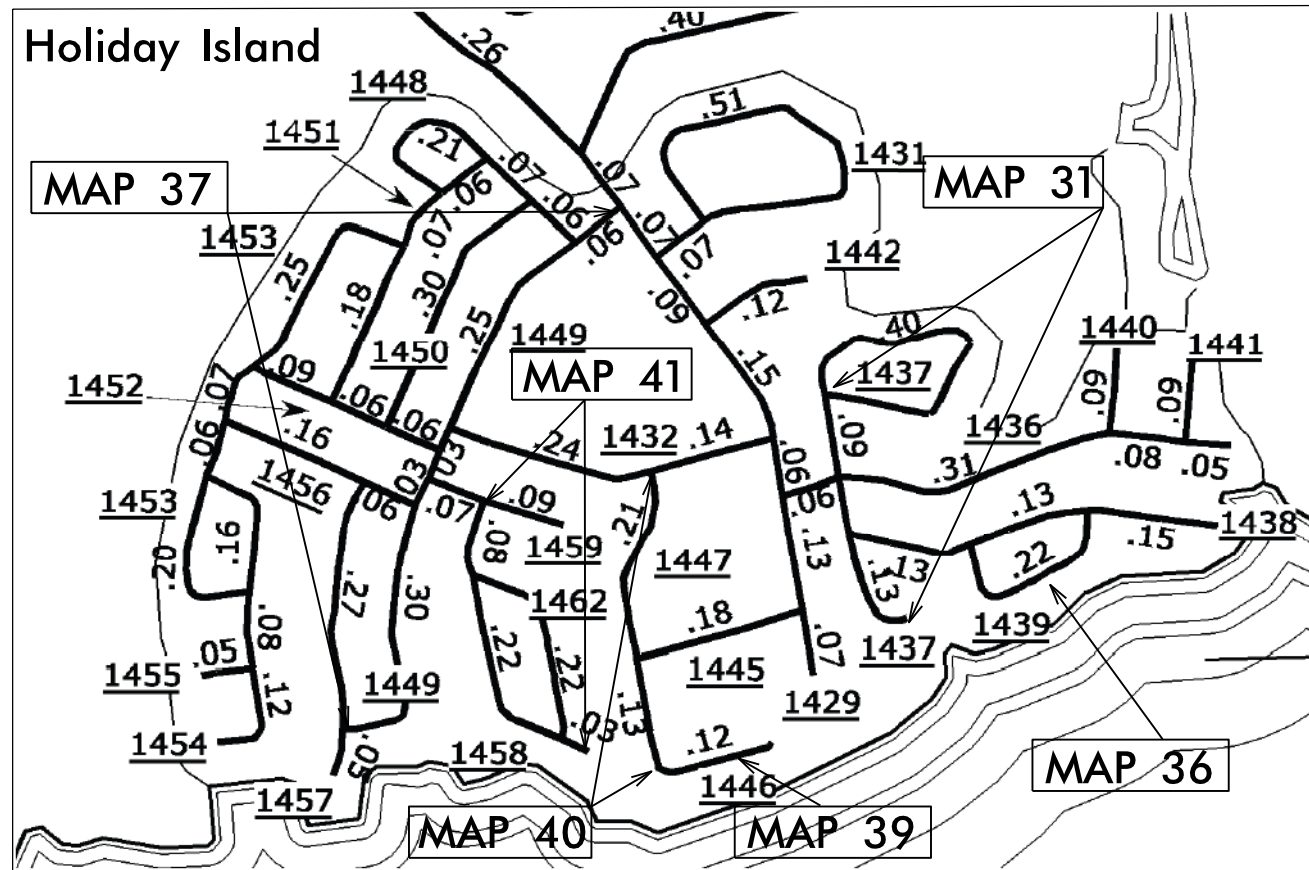
STATE OF NORTH CAROLINA
DIVISION OF HIGHWAYS

PERQUIMANS COUNTY

LOCATION: MAP 31 SR 1437 PIRATE COVE WAY FROM BEGIN OF MAINT. TO DEAD END
 MAP 32 SR 1436 HUNT CLUB TRAIL FROM SR 1429 TO DEAD END
 MAP 33 SR 1440 WHITETAIL COURT FROM SR 1436 TO DEAD END
 MAP 34 SR 1441 BUCKHORN COURT FROM SR 1436 TO DEAD END
 MAP 35 SR 1438 FLYWAY DRIVE FROM SR 1437 TO CUL-DE-SAC
 MAP 36 SR 1439 MOONLIGHT DR. FROM SR 1438 TO SR 1438
 MAP 37 SR 1449 TRANQUILITY LANE FROM SR 1429 TO SR 1457
 MAP 38 SR 1445 LEISURE RD. FROM SR 1429 TO SR 1447
 MAP 39 SR 1446 DRIFTWOOD RD. FROM SR 1447 TO END OF MAINT.
 MAP 40 SR 1447 SOUNDWARD LANE FROM SR 1432 TO SR 1446
 MAP 41 SR 1458 SUNSET CIRCLE FROM SR 1459 TO LOOP RD.
 MAP 42 SR 1459 LEEWARD DRIVE FROM SR 1449 TO DEAD END

TYPE OF WORK: RESURFACING

STATE	STATE PROJECT REFERENCE NO.	SHEET NO.	TOTAL SHEETS
N.C.	2016CPT.01.01.20722.1, ETC.	3	7
STATE PROJ. NO.		F.A. PROJ. NO.	DESCRIPTION
2016CPT.01.01.20722.5			MAP 31
2016CPT.01.01.20722.5			MAP 32
2016CPT.01.01.20722.5			MAP 33
2016CPT.01.01.20722.5			MAP 34
2016CPT.01.01.20722.5			MAP 35
2016CPT.01.01.20722.5			MAP 36
2016CPT.01.01.20722.6			MAP 37
2016CPT.01.01.20722.6			MAP 38
2016CPT.01.01.20722.6			MAP 39
2016CPT.01.01.20722.6			MAP 40
2016CPT.01.01.20722.6			MAP 41
2016CPT.01.01.20722.6			MAP 42



PROJECT LENGTH

LENGTH OF ROADWAY PROJECT MAP 31 = 0.70 MI.
 LENGTH OF ROADWAY PROJECT MAP 32 = 0.51 MI.
 LENGTH OF ROADWAY PROJECT MAP 33 = 0.09 MI.
 LENGTH OF ROADWAY PROJECT MAP 34 = 0.09 MI.
 LENGTH OF ROADWAY PROJECT MAP 35 = 0.41 MI.
 LENGTH OF ROADWAY PROJECT MAP 36 = 0.23 MI.

PROJECT LENGTH

LENGTH OF ROADWAY PROJECT MAP 37 = 0.71 MI.
 LENGTH OF ROADWAY PROJECT MAP 38 = 0.19 MI.
 LENGTH OF ROADWAY PROJECT MAP 39 = 0.12 MI.
 LENGTH OF ROADWAY PROJECT MAP 40 = 0.34 MI.
 LENGTH OF ROADWAY PROJECT MAP 41 = 0.34 MI.
 LENGTH OF ROADWAY PROJECT MAP 42 = 0.15 MI.

Prepared in the Office of:
DIVISION OF HIGHWAYS
 113 Airport Dr., Edenton NC, 27932

2012 STANDARD SPECIFICATIONS

LETTING DATE: _____

W. B. HOBBS, P.E.
 DIVISION PROJECT MANAGER

C. E. SLACHTA
 DIVISION PROPOSALS ENGINEER

DIVISION OF HIGHWAYS
 STATE OF NORTH CAROLINA

C O N T R A C T P A V E M E N T S C H E D U L E

C1	PROP. APPROX. $\frac{3}{4}$ " ASPHALT CONCRETE SURFACE COURSE, TYPE S4.75A, AT AN AVERAGE RATE OF 75 LBS. PER SQ. YD.
U	EXISTING PAVEMENT

PAVEMENT SCHEDULE

C1	PROP. APPROX. 3/4" ASPHALT CONCRETE SURFACE COURSE, TYPE S4.75A, AT AN AVERAGE RATE OF 75 LBS. PER SQ. YD.
U	EXISTING PAVEMENT.

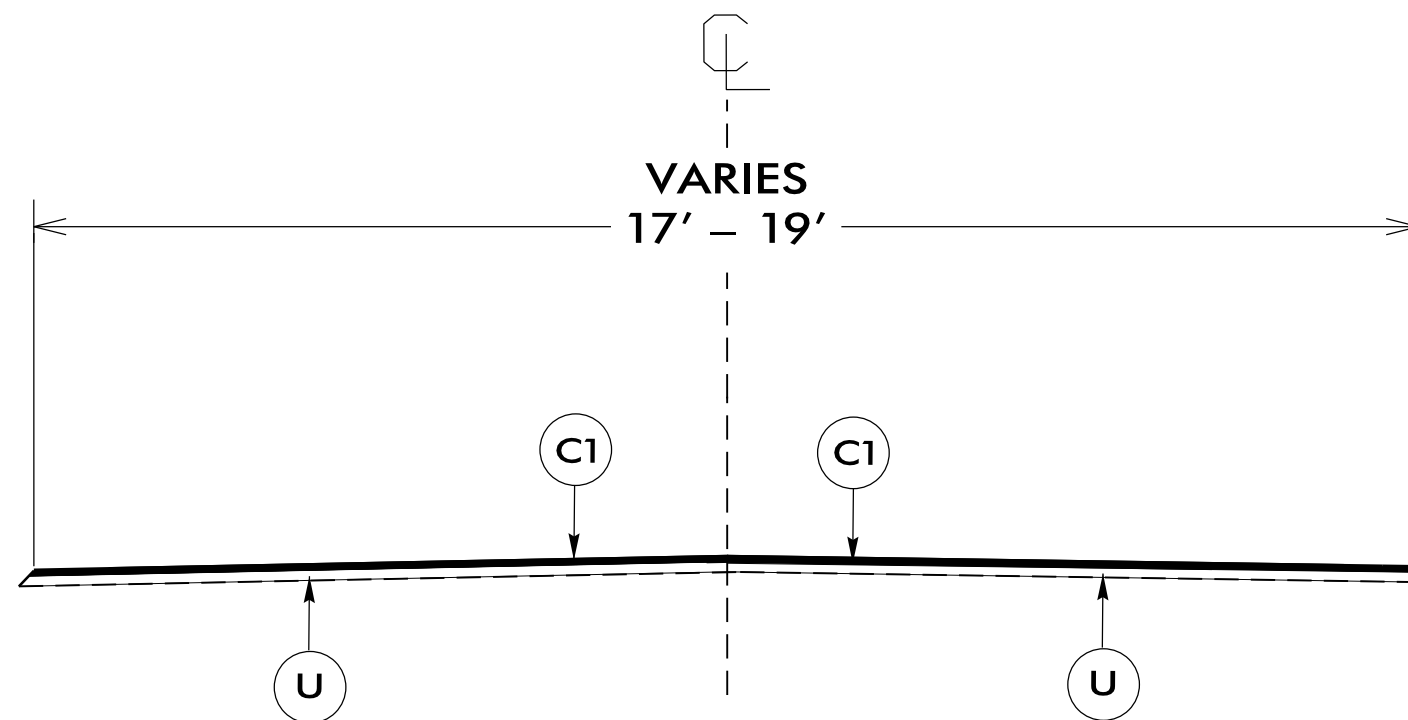
PROJECT REFERENCE NO.	SHEET NO.
2016CPT.01.01.20722.1, ETC.	5

NOTES:

*ALL PAVED S.R. ROADS TO BE RESURFACED TO THE ENDS OF THE RADII, OR AS DIRECTED BY THE ENGINEER

*EDGES, PAVEMENT WIDENING, INTERSECTIONS, AND BRIDGE FLARES ARE INCLUDED IN THE TABLE OF QUANTITIES

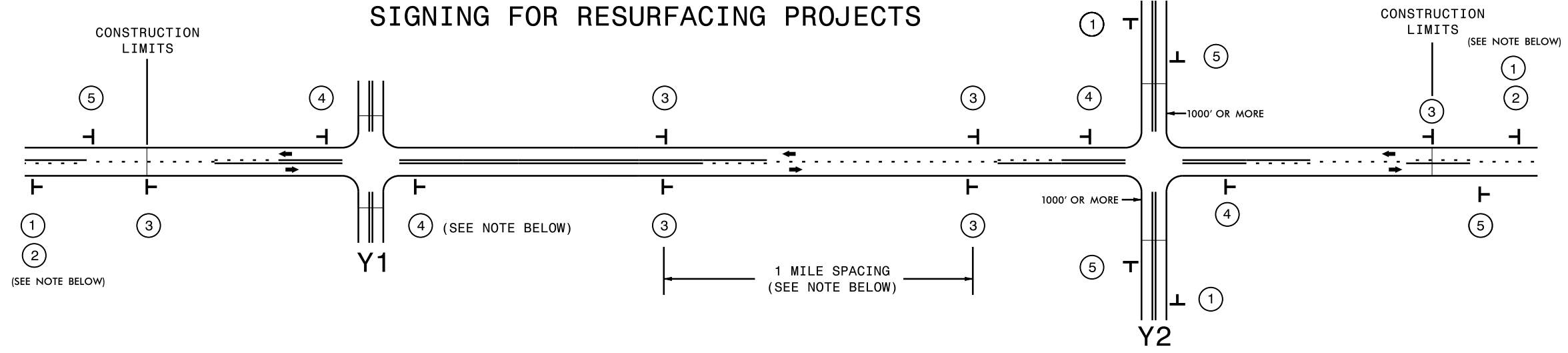
*SHOULDERS TO BE RECONSTRUCTED BY OTHERS



TYPICAL SECTION NO.1

USE WITH MAPS 1-42

SIGNING FOR RESURFACING PROJECTS



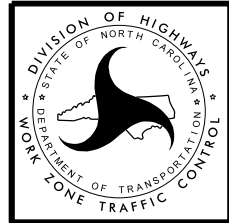
LEGEND	
T	STATIONARY SIGN
←	DIRECTION OF TRAFFIC FLOW

MAINLINE (-L-) SIGNING

-Y- LINE SIGNING

SIGNING NOTES AND PLACEMENT PER DIRECTION		<p>PLACE 1000' PRIOR TO BEGINNING OF CONSTRUCTION LIMITS. ONLY USED ON -Y- LINES IF RESURFACING LIMITS EXTEND 1000' ALONG -Y- LINE.</p> <p>#2 SIGN ONLY USED WHEN RESURFACING LIMITS ARE 2 OR MORE MILES IN LENGTH. ROUND UP TO NEXT WHOLE NUMBER. (NO FRACTIONAL OR DECIMAL NUMBERS)</p>	<p style="text-align: center;">NO REQUIRED STATIONARY SIGNING FOR THE FOLLOWING -Y- LINE CONDITIONS:</p> <ol style="list-style-type: none"> 1) LESS THAN 1000' OF RESURFACING ALONG -Y- LINE 2) SUBDIVISION ROADS 3) DEAD END ROADS <p>WHEN PAVING/CONSTRUCTION ACTIVITIES PROCEED ACROSS AN UNSIGNED -Y- LINE, ADVANCE WARNING PORTABLE SIGNS SHALL BE USED ALONG THE -Y- LINE AS SHOWN BELOW. REMOVE UPON COMPLETION OF WORK.</p> <div style="display: flex; justify-content: space-around; align-items: center;"> <div style="text-align: center;"> <p>PLACED 500' IN ADVANCE OF FLAGGER.</p> </div> <div style="text-align: center;"> <p>PLACED 250' IN ADVANCE OF FLAGGER.</p> </div> </div>
		<p>PLACE INITIALLY AT THE CONSTRUCTION LIMITS AND SPACED 1 MILE APART THEREAFTER. IF NO -Y- LINES EXIST, PLACE 2ND SET 1/2 MILE FROM THE CONSTRUCTION LIMITS AND THEN SPACE 1 MILE THEREAFTER.</p>	
		<p>THESE ARE FOR -Y- LINES THAT ARE "THROUGH" ROADWAYS. DEAD END AND SUBDIVISION ROADS ARE NOT "THROUGH" ROADWAYS. INSTALL 500' +/- FROM EACH -Y- LINE APPROACH AS SHOWN ABOVE. FOR MULTIPLE -Y- LINES THAT ARE SEPARATED BY 0.25 MILES OR LESS, TREAT AS A SINGLE UNIT AND INSTALL WITHIN 500' OF EACH APPROACH. A MAXIMUM OF 2 SIGN SETS PER MILE. DO NOT INSTALL WHEN -Y- LINES ARE WITHIN 0.5 MILES FROM "END ROAD WORK" SIGN.</p>	
		<p>PLACE 500' FOLLOWING THE END OF CONSTRUCTION LIMITS.</p>	

I:\JUL-2015\1135
 \DTC-2064931\GIS\Resurfacing_AdvWarn_2Ln.dgn
 b1g1um AT DICAD270261



RESURFACING
 ADVANCE WARNING SIGNS
 FOR
 RURAL AND SUBURBAN
 2 LANE ROADWAYS

PROJECT NO.	SHEET	TOTAL NO.
2016CPT.01.01.20722.1, ETC.	7	7

SUMMARY OF QUANTITIES

PROJECT NO	COUNTY	MAP NO	ROUTE	DESCRIPTION	TYP	LANES	LANE TYPE	FINAL SURFACE TESTING REQUIRED	WARM MIX ASPHALT REQUIRED	LENGTH MI	WIDTH FT	MOBILIZATION LS	SURFACE COURSE, S4.75A TONS	ASPHALT BINDER FOR PLANT MIX TONS	TEMPORARY TRAFFIC CONTROL LS
2016CPT.01.01.20722.1	Perquimans	1	SR 1378 Shoshone Trail	FROM SR 1340 TO SR 1377	1	2	2WU	NO	NO	0.28	17	1	121	8	1
2016CPT.01.01.20722.1	Perquimans	2	SR 1377 Micmac Trail	FROM SR 1378 TO SR 1379	1	2	2WU	NO	NO	0.28	18	*	129	9	*
2016CPT.01.01.20722.1	Perquimans	3	SR 1379 Blackfoot Trail	FROM SR 1377 TO SR 1413	1	2	2WU	NO	NO	0.11	18	*	50	3	*
2016CPT.01.01.20722.1	Perquimans	4	SR 1413 Huron Trail	FROM SR 1379 TO 1414	1	2	2WU	NO	NO	0.12	18	*	55	4	*
2016CPT.01.01.20722.1	Perquimans	5	SR 1414 Shawnee Trail	FROM SR 1413 TO SR 1379	1	2	2WU	NO	NO	0.11	18	*	50	3	*
2016CPT.01.01.20722.1	Perquimans	6	SR 1396 Hopi Trail	FROM SR 1377 TO SR 1395	1	2	2WU	NO	NO	0.08	17	*	35	2	*
2016CPT.01.01.20722.1	Perquimans	7	SR 1395 Iowa Trails	FROM SR 1396 TO SR 1377	1	2	2WU	NO	NO	0.1	17	*	43	3	*
2016CPT.01.01.20722.2	Perquimans	8	SR 1376 Crow Trail	SR 1377 TO SR 1376	1	2	2WU	NO	NO	0.15	17	*	65	4	*
2016CPT.01.01.20722.2	Perquimans	9	SR 1425 Mohave Trail	FROM SR 1376 TO DEAD END	1	2	2WU	NO	NO	0.08	18	*	37	2	*
2016CPT.01.01.20722.2	Perquimans	10	SR 1376 Creek St	FROM SR 1376 TO SR 1375	1	2	2WU	NO	NO	0.08	17	*	35	2	*
2016CPT.01.01.20722.2	Perquimans	11	SR 1375 Ute Trail	FROM SR 1376 TO SR 1374	1	2	2WU	NO	NO	0.09	17	*	39	3	*
2016CPT.01.01.20722.2	Perquimans	12	SR 1374 Arapahoe Trail	FROM SR 1373 TO SR 1376	1	2	2WU	NO	NO	0.29	17	*	126	9	*
2016CPT.01.01.20722.2	Perquimans	13	SR 1470 Mohawk Trail	FROM SR 1471 TO SR 1378	1	2	2WU	NO	NO	0.08	19	*	39	3	*
2016CPT.01.01.20722.2	Perquimans	14	SR 1471 Comanche Trail	FROM SR 1340 TO 1374	1	2	2WU	NO	NO	0.34	18	*	156	11	*
2016CPT.01.01.20722.2	Perquimans	15	SR 1394 Bay St	FROM SR 1374 TO SR 1398	1	2	2WU	NO	NO	0.08	17	*	35	2	*
2016CPT.01.01.20722.2	Perquimans	16	SR 1398 Bay Court	FROM SR 1394 TO DEAD END	1	2	2WU	NO	NO	0.05	18	*	23	2	*
2016CPT.01.01.20722.3	Perquimans	17	SR 1393 Chestnut St	FROM SR 1340 TO SR 1374	1	2	2WU	NO	NO	0.34	17	*	147	10	*
2016CPT.01.01.20722.3	Perquimans	18	SR 1424 Walnut St	FROM SR 1373 TO SR 1393	1	2	2WU	NO	NO	0.11	18.5	*	52	4	*
2016CPT.01.01.20722.3	Perquimans	19	SR 1234 Cottonwood st	FROM SR 1373 TO SR 1393	1	2	2WU	NO	NO	0.11	17	*	48	3	*
2016CPT.01.01.20722.3	Perquimans	20	SR 1373 Holly St/Cork St	FROM SR 1340 TO SR 1372	1	2	2WU	NO	NO	0.5	17	*	217	15	*
2016CPT.01.01.20722.3	Perquimans	21	SR 1392 Laurel St	FROM SR 1384 TO SR 1373	1	2	2WU	NO	NO	0.25	17	*	108	7	*
2016CPT.01.01.20722.3	Perquimans	22	SR 1397 Holly St	FROM SR 1373 TO DEAD END	1	2	2WU	NO	NO	0.06	17	*	26	2	*
2016CPT.01.01.20722.3	Perquimans	23	SR 1386 Byrd St	FROM SR 1372 TO DEAD END	1	2	2WU	NO	NO	0.17	17.5	*	76	5	*
2016CPT.01.01.20722.3	Perquimans	24	SR 1385 Clark St	FROM SR 1384 TO SR 1386	1	2	2WU	NO	NO	0.27	18	*	124	8	*
2016CPT.01.01.20722.3	Perquimans	25	SR 1384 Fir St	FROM SR 1373 TO 1386	1	2	2WU	NO	NO	0.52	19	*	252	17	*
2016CPT.01.01.20722.4	Perquimans	26	SR 1389 Yeopim Trail	FROM SR 1340 TO SR 1390	1	2	2WU	NO	NO	0.05	18	*	23	2	*
2016CPT.01.01.20722.4	Perquimans	27	SR 1390 Navajo Trail	FROM SR 1389 TO DEAD END	1	2	2WU	NO	NO	0.2	18	*	92	6	*
2016CPT.01.01.20722.5	Perquimans	28	SR 1430 Discovery Trail	FROM SR 1429 TO DEAD END	1	2	2WU	NO	NO	0.41	19	*	199	14	*
2016CPT.01.01.20722.5	Perquimans	29	SR 1431 East Inlet Circle	FROM SR 1429 TO SR 1431	1	2	2WU	NO	NO	0.58	19	*	281	19	*
2016CPT.01.01.20722.5	Perquimans	30	SR 1442 Pirate Landing	FROM SR 1429 TO CUL-DE-SAC	1	2	2WU	NO	NO	0.12	18	*			*
2016CPT.01.01.20722.5	Perquimans	31	SR 1437 Pirate Cove Way	FROM BEGIN OF MAINT TO DEAD END	1	2	2WU	NO	NO	0.7	18	*	321	22	*
2016CPT.01.01.20722.5	Perquimans	32	SR 1436 Hunt Club Trail	FROM SR 1429 TO DEAD END	1	2	2WU	NO	NO	0.51	18	*	234	16	*
2016CPT.01.01.20722.5	Perquimans	33	SR 1440 Whitetail Court	FROM SR 1436 TO DEAD END	1	2	2WU	NO	NO	0.09	18	*	41	3	*
2016CPT.01.01.20722.5	Perquimans	34	SR 1441 Buckhorn Court	FROM SR 1436 TO DEAD END	1	2	2WU	NO	NO	0.09	18	*	41	3	*
2016CPT.01.01.20722.5	Perquimans	35	SR 1438 Flyway Drive	FROM SR 1437 TO CUL-DE-SAC	1	2	2WU	NO	NO	0.41	18	*	188	13	*
2016CPT.01.01.20722.5	Perquimans	36	SR 1439 Moonlight Dr	FROM SR 1438 TO SR 1438	1	2	2WU	NO	NO	0.23	18	*	106	7	*
2016CPT.01.01.20722.6	Perquimans	37	SR 1449 Tranquility Lane	FROM SR 1429 TO SR 1457	1	2	2WU	NO	NO	0.71	18	*	326	22	*
2016CPT.01.01.20722.6	Perquimans	38	SR 1445 Leisure Rd	FROM SR 1429 TO 1447	1	2	2WU	NO	NO	0.19	18	*	87	6	*
2016CPT.01.01.20722.6	Perquimans	39	SR 1446 Driftwood Rd	FROM SR 1447 TO END OF MAINT	1	2	2WU	NO	NO	0.12	18	*	55	4	*
2016CPT.01.01.20722.6	Perquimans	40	SR 1447 Soundward Lane	FROM SR 1432 TO SR 1446	1	2	2WU	NO	NO	0.34	18	*	156	11	*
2016CPT.01.01.20722.6	Perquimans	41	SR 1458 Sunset Circle	FROM SR 1459 TO LOOP RD	1	2	2WU	NO	NO	0.34	18	*	156	11	*
2016CPT.01.01.20722.6	Perquimans	42	SR 1459 Leeward Drive	FROM SR 1449 TO DEAD END	1	2	2WU	NO	NO	0.15	18	*	69	5	*
GRAND TOTAL										9.89		1	4,463	305	1