

MOUNT GIBSON MINING LIMITED

**MT GIBSON MAGNETITE PROJECT
SUPPLEMENTARY VEGETATION AND
FLORA SURVEYS**



VERSION 2

MARCH 2006

REPORT NO: 2005/149

DISCLAIMER

This document is published in accordance with and subject to an agreement between ATA Environmental (“ATA”) and the client for whom it has been prepared Mount Gibson Mining Limited (“Client”) and is restricted to those issues that have been raised by the client in its engagement of ATA and prepared using the standard of skill and care ordinarily exercised by Environmental Scientists in the preparation of such Documents.

Any person or organisation that relies on or uses the document for purposes or reasons other than those agreed by ATA and the Client without first obtaining the prior written consent of ATA, does so entirely at their own risk and ATA denies all liability in tort, contract or otherwise for any loss, damage or injury of any kind whatsoever (whether in negligence or otherwise) that may be suffered as a consequence of relying on this Document for any purpose other than that agreed with the Client.

QUALITY ASSURANCE

ATA Environmental has implemented a comprehensive range of quality control measures on all aspects of the company’s operation and has Quality Assurance certification to ISO 9001.

An internal quality review process has been applied to each project task undertaken by us. Each document is carefully reviewed by core members of the consultancy team and signed off at Director level prior to issue to the client. Draft documents are submitted to the client for comment and acceptance prior to final production.

Document No: MGM-2004-002_FLAS_004_sg_V2

Report No: 2005/149

Checked by: Signed:

Name:

Shaun Grein

Date: 22 March 2006

Approved by: Signed:

Name:

Martine Scheltema

Date: 22 March 2006

TABLE OF CONTENTS

1.	INTRODUCTION	1
1.1	Background	1
1.2	Purpose and Scope of Work.....	1
2.	SITE DESCRIPTION	3
2.1	Location	3
2.2	Existing Environment	3
2.2.1	Climate	3
2.2.2	Biogeography	3
2.2.3	Vegetation	3
2.2.4	Geology, Landform and Topography	4
2.2.5	Land Systems	4
3.	VEGETATION AND FLORA	5
3.1	Methodology	5
3.1.1	Limitations of the Surveys	6
3.2	Vegetation	6
3.2.1	Description.....	6
3.2.2	Vegetation Significance	13
3.2.3	Vegetation Condition	13
3.3	Flora	13
3.3.1	Description.....	13
3.3.2	Significant Flora.....	14
4.	CONCLUSIONS.....	17
	REFERENCES	18

LIST OF FIGURES

1. Regional Location
- 2a. Vegetation Associations
- 2b. Vegetation Associations Legend
- 2c. Quadrat Locations and Vegetation Associations

LIST OF APPENDICES

1. Mount Gibson Supplementary Surveys Flora List
2. Quadrat Data

1. INTRODUCTION

1.1 Background

The proposed Mt Gibson Iron Ore Project at Mt Gibson is a combined hematite/magnetite open cut mining operation that will produce both direct shipping grade hematite ore and magnetite concentrate. These products will be exported to China through the Port of Geraldton, at annual shipping rates of 1.8Mtpa and 5Mtpa respectively.

The project will source both hematite ore and magnetite bearing Banded Iron Formation (“BIF”) ore from the Extension Hill deposit, which comprises the most northerly ridge of the Mt Gibson ranges. The Extension Hill deposit contains hematite resources of 13Mt and a further 230Mt of BIF resources underlying and extending beyond the hematite cap. The final pit will be approximately 1300m long, 600m wide and up to 400m deep, and will be developed in stages over the projected 23 year Life of Mine. For the purposes of this report the project is referred to as the Mt Gibson Magnetite Project.

1.2 Purpose and Scope of Work

A number of vegetation and flora surveys have been previously conducted in the Mt Gibson area (i.e. Muir Environmental 1995, Bennett 2000, Paul Armstrong & Associates 2004, ATA Environmental 2004). The most detailed of these was conducted by Bennett flora and vegetation survey in 2000. These previous flora and vegetation surveys were conducted to prior to the release of the EPA’s Guidance Statement No. 51 *Flora and Vegetation Surveys for Environmental Impact Assessment in Western Australia* (EPA, 2004). Guidance Statement No. 51 that requires that development proposals that are likely to result in a high level of impact require a detailed flora surveys are required involving one or more during the main flowering season and replication of survey plots or quadrats within vegetation units identified from the proposal area.

While the Bennett (2000) survey identified flora associated with a particular vegetation units, no quadrat data was collected from representative replicated vegetation units and hence the survey was not considered to have been conducted in accordance with Guidance Statement No. 51. Additionally, a small area to the east and larger areas to the west of the project area were not surveyed during any of the previous assessments. This report is intended to supplement vegetation mapping of the Mt Gibson lease area previously undertaken by Bennett and to ensure the mapping of the vegetation communities occurring on the Mt Gibson leases was a comprehensive as possible. The ATA Environmental supplementary vegetation mapping provide had been prepared a finer level of detail than the Bennett (2000) mapping.

As the proposal is to be formally assessed by the Environmental Protection Authority under Section 38 of *Environmental Protection Act 1980*, there was a requirement for supplementary flora and vegetation surveys of the project area to be conducted, including collection of quadrat-based floristic data. Following discussions with the

Department of Conservation and Land Management (CALM), a commitment was made to only collect plot-based floristic data from Banded Ironstone Formation (BIF) within the Mt Gibson leases and on BIF within a 20km radius of the Mt Gibson leases. The results of the analysis of this data is described in Griffin (2005).

2. SITE DESCRIPTION

2.1 Location

The Mt Gibson Ranges are located approximately 350km north east of Perth, immediately adjacent to the Great Northern Highway between Wubin and Paynes Find (Figure 1). The project area abuts the Mt Gibson, White Wells and Ninghan pastoral leases. Mongers Lake and Lake Moore are located approximately 40km to the west and 30km to the east respectively. The additional areas associated with the project that have been surveyed for this assessment include two large areas to the immediate west of Great Northern Highway to the north and south of Wanarra Road that were investigated by Mount Gibson Iron as potential sites for tailings from the proposed mine (approximately 11km² and 13.5km² respectively) and a smaller area (approximately 3km²) to the east that was omitted from previous surveys (Figures 2a and 2c).

2.2 Existing Environment

2.2.1 Climate

The Mt Gibson Magnetite project area is located in the semi-desert Mediterranean bioclimatic region of Beard (1990). There is an average of 9-11 months of dry weather with mild wet winters, hot dry summers and an average rainfall between 250-300mm. The nearest rainfall recording station is at Paynes Find where the average rainfall is 273mm. The rainfall is both irregular and variable.

2.2.2 Biogeography

The Mt Gibson Magnetite project area is located within the Ancient Drainage Subregion of the Avon Wheatbelt Interim Bioregion (Thackway and Cresswell, 1995). The Ancient Drainage Subregion is an ancient peneplain with low relief and a gently undulating landscape. Lateritic uplands are surrounded by a yellow dominated sandplain. The Mt Gibson Magnetite project area is located near the junction of the Avon Wheatbelt, Yalgoo and Coolgardie Interim Bioregions (Thackway and Cresswell, 1995). As a consequence, the floristic composition of the project area is considered to be representative of all three Bioregions.

2.2.3 Vegetation

The Mt Gibson project area occurs within the Avon Botanical District in the Southwest Botanical Province but near the boundary of the Austin Botanical District of the Eremaean Botanical Province and the (Beard, 1990). As was the case with the Bioregions, the flora and vegetation of the Mt Gibson project area contains components that are representative of both the Avon and Austin Botanical District.

The division between these two Botanical Provinces is the '*Eucalyptus- Acacia*' line between the *Acacia* low woodland and the *Eucalyptus* medium height woodland on

the lower slope soils. The Avon Botanical District is characterised by low shrubs and heath on the sand plain, *Acacia- Allocasuarina* thickets on ironstone gravels, woodlands of York Gum (*Eucalyptus loxophleba*) Salmon Gum (*Eucalyptus salmonophloia*) and Wandoo (*Eucalyptus wandoo*) on loam soils and halophytes on saline soils. The Austin Botanical District is characterised by Mulga (*Acacia aneura*) low woodland on the plains and shrubs on the hills with *Eucalyptus* spp and *Triodia basedowii* on the sand plains.

2.2.4 Geology, Landform and Topography

The Mt Gibson Magnetite project area is comprised of Archaean granites with infolded metamorphics of the Yilgarn Block. The topography is described by Beard (1990) as undulating plateau mostly with disorganised drainage for the Avon Botanical District and undulating with occasional ranges of low hills for the Austin Botanical District. The soils of the Avon Botanical District are typically yellow earths on sand plains with ironstone gravels, hard setting loam soils on the slopes and lower land and saline soils in the depressions.

2.2.5 Land Systems

Based on mapping undertaken by Agriculture Western Australia (Payne et al., 1998) there are five land system units within and in the immediate vicinity of the Mt Gibson Magnetite project area, which are shown in Table 1.

TABLE 1
LAND SYSTEM UNITS IN THE MT GIBSON AREA

Land System Unit	Description
Tallering	Hills with Mixed Shrublands <i>Tallering</i> Prominent ridges and hills of banded ironstone, dolerite and sedimentary rocks with mixed shrublands.
Moriarty	Stony plains and lower alluvial plains with predominantly saline soils and halophytic shrublands <i>Moriarty</i> Gently undulating stony plains, low rises with limonite and alluvial plains supporting Salmon Gum, Gimlet, and Goldfields Blackbutt woodlands with halophytic and <i>Acacia</i> shrublands.
Illaara	Plains with deep sandy soils supporting acacia shrublands and occasionally with wanderrrie grasses <i>Illaara</i> Gently undulating plains and occasional low rises with mantles of ironstone gravels supporting <i>Acacia Casuarina</i> shrublands.
Pindar	Plains with minor calcrete inclusions with casuarina-acacia shrubland or eucalypt woodlands. <i>Pindar</i> Level plains with Eucalypt woodlands, surrounded by sandplain supporting <i>Acacia</i> shrublands.
Joseph	Sandplains with acacia shrublands, mallees and heath. <i>Joseph</i> Undulating yellow sandplain supporting very dense and diverse shrublands with some mallees, sedges and Spinifex.

3. VEGETATION AND FLORA

3.1 Methodology

This supplementary vegetation and flora survey of the Mt Gibson Magnetite project area was conducted over a period of 3 days from 3 November to 5 November 2004 and for 4 days from 19 January to 22 January 2005 (a total of 18 field-days) by Mr Shaun Grein, Ms Cassyanna Gray and Ms Gabriela Martinez, all qualified botanists with experienced in conducting surveys in the region. This was considered to be an adequate amount of time to survey the 76 non permanent quadrats 30m x 30m in dimension.

Prior to undertaking the surveys, colour orthophotographs at a scale of 1:30,000 were examined to identify the patterns of vegetation change in the study area. This was used to aid in the mapping of the different vegetation associations occurring over the area.

Prior to the field survey, the Department of Conservation and Land Management's (CALM) database of Declared Rare and Priority Flora was searched to determine the occurrence of any significant species in the study area (Table 2). A search of CALM's Threatened Ecological Communities (TEC's) database was also conducted. The search indicated that there are no known occurrences of TEC's in the vicinity of the Mt Gibson Magnetite project area.

The survey was generally conducted in accordance with the EPA's Guidance Statement No. 51 *Terrestrial Flora and Vegetation Surveys for Environmental Impact Assessment in Western Australia* (EPA, 2004). However, as outlined in Section 3.1.1, the timing of the surveys was not optimal for the identification of all ephemeral and annual species, but was considered appropriate for the mapping of vegetation communities.

The surveys were conducted by a combination of vehicle access along tracks within the project area and extensive foot traverses through those areas not accessible by vehicle. The amount of time on site was considered adequate given accessibility size and relative homogeneity of the survey area.

The condition of the vegetation was assessed according to the condition rating scale devised by Keighery and described in *Bush Forever* (Government of Western Australia, 2000). This condition rating scale ranges from Pristine (which the vegetation exhibits no visible signs of disturbance) to Completely Degraded (where the vegetation structure is no longer intact and without native plant species).

A total of 76 non-permanent quadrats (30m x 30m) established in representative vegetation associations were surveyed in the study area with species, height and percentage cover being recorded (Appendix 2). Photos were taken of the majority of quadrats. In addition to the quadrat survey, the presence of all other species was also recorded within each vegetation type during the traverses of the area (Appendix 1).

All plant specimens not identified during the flora survey were collected, dried and identified at the Western Australian Herbarium. Voucher specimens have been retained for verification if required.

The condition of the vegetation was assessed using the vegetation condition scale rating adapted from Keighery (Government of WA, 2000). Keighery's condition rating scale ranges from Pristine (which the vegetation exhibits no visible signs of disturbance) to Completely Degraded (where the vegetation structure is no longer intact and without native plant species).

3.1.1 Limitations of the Surveys

The supplementary surveys were conducted during early November 2004 and mid January 2005, times of the year that are not considered optimal for detecting many of the ephemeral flora and grass species likely to occur in the area (including annual daisies that only germinate and flower immediately after late winter rains). As a consequence of the lack of flowering material, some taxa could be identified to genus level only. Therefore the floristic suite recorded during the surveys is not considered to be as comprehensive as if the surveys had been conducted during early spring (i.e. September). However, additional, quadrat-based flora surveys were conducted along the ridges of the Mt Gibson ranges and other Banded Iron Formations in the region during spring 2005.

Fungi and nonvascular flora (e.g. algae, mosses and liverworts) were not specifically surveyed for during these supplementary surveys.

No floristic analysis of the quadrat data collected from the supplementary surveys was conducted for this study.

3.2 Vegetation

3.2.1 Description

A total of 35 vegetation associations were identified by ATA Environmental during the supplementary flora and vegetation surveys. These vegetation associations are based on the vegetation structural class nomenclatures as outlined in Muir 1977. The vegetation associations are mapped in Figure 2a and 2c. Bennett's (2000) vegetation type mapping for the remainder of the project area, which mapped a total of 24 communities is also shown in Figures 2a and 2c. Figure 2c also indicates the locations of the 30m x30m quadrats in relation to the mapped vegetation associations. The ATA Environmental supplementary vegetation mapping was undertaken to complement the Bennett (2000) vegetation unit mapping and included mapping additional areas of the Mt Gibson leases that were not surveyed by Bennett. The supplementary vegetation mapping was also prepared at a finer level of detail than the Bennett mapping.

The 35 vegetation associations identified by ATA Environmental are:

1. Closed Heath to Tall Open Shrubland dominated by *Acacia aneura* var. *aneura*, *Calycopeplus paucifolius*, *Melaleuca uncinata* and *Aluta aspera* with scattered *Melaleuca nematophylla* to 5m in height over an Open Heath dominated by *Acacia assimilis* subsp. *assimilis* to 2m in height over a Low Open Shrubland dominated by *Thryptomene cuspidata* to 1m in height on lateritic gravel.

This community is represented by quadrats Q1a, Q1b and Q1c
Condition: Very Good

2. Closed Heath to Tall Open Scrub dominated by *Acacia masliniana*, *Acacia aneura* var. *aneura*, and *Allocasuarina acutivalvis* subsp. *prinsepiana* to 3m in height with scattered *Eucalyptus leptopoda* subsp. *arctata* over a Shrubland dominated by *Melaleuca nematophylla*, *Grevillea paradoxa* and *Micromyrtus clavata* (ms) to 1.5m in height.

This community is represented by Q2a, Q2b, Q2c and Q2d
Condition: Very Good to Excellent

3. Low Open Woodland dominated by *Eucalyptus kochii* subsp. *plenissima*, *Eucalyptus leptopoda* subsp. *arctata* and *Eucalyptus ebbanoensis* subsp. *ebbanoensis* to 9m in height with occasional *Callitris glaucophylla* and *Allocasuarina acutivalvis* subsp. *prinsepiana* to 4m in height over a Tall Open Shrubland dominated by *Acacia anthochaera* and *Acacia tetragonophylla* to 2m in height over a Shrubland of *Acacia aneura* var. *aneura* and *Hibbertia ancistrophylla* (ms) to 2m on loamy clayey soils with scattered rocks.

This community is represented by quadrats Q3a, Q3b and Q3c
Condition: Excellent to Good

4. Closed Tall Scrub to Shrubland dominated by *Acacia aneura* var. *aneura*, *Melaleuca nematophylla*, *Baeckea* sp. to 3m with occasional *Allocasuarina acutivalvis* subsp. *prinsepiana*, *Eucalyptus kochii* subsp. *horistes* (ms) and *Eucalyptus brachycorys* to 4m over a Low Open Shrubland dominated by *Micromyrtus clavata* (ms) to 2m over a Very Open Herbland dominated by *Hyalosperma glutinosum* subsp. *glutinosum*

This community is represented by quadrats Q4a, Q4b, Q4c, Q4d, Q4e, Q4f and Q4g
Condition: Excellent to Good

5. Closed Tall Scrub to Tall Open Scrub dominated by *Acacia aneura* var. *aneura*, *Hakea minyma* and *Allocasuarina acutivalvis* subsp. *prinsepiana* to 4m with occasional *Santalum acuminatum* over an Open Shrubland dominated by *Philotheca brucei* subsp. *brucei*, *Philotheca tomentella*, *Thryptomene cuspidata* and *Micromyrtus clavata* (ms) to 2m.

This community is represented by quadrats Q5a and Q5b
Condition: Excellent to Good

6. Closed Heath to Shrubland dominated by *Baeckea benthamii* (ms), *Acacia ramulosa*, *Acacia assimilis* subsp. *assimilis* and *Melaleuca uncinata* to 3m over a Very Open Herbland dominated by *Borya sphaerocephala* and *Calandrinia polyandra* associated with granite outcropping. This community is represented by quadrats Q6a, Q6b and Q6c and was considered to be Very Good to Degraded condition.

7. Woodland to Low Open Woodland of *Eucalyptus kochii* subsp. *plenissima*, *Eucalyptus oldfieldii* with scattered *Callitris glaucophylla* to 10m over a Tall Open Scrub dominated by *Acacia aneura* var. *aneura*, *Santalum acuminatum*, *Hakea minyma* and *Melaleuca leiocarpa* to 5m over an Open Shrubland dominated by *Alyxia buxifolia* and *Phebalium tuberosum* to 2m over a Low Open Shrubland of *Olearia muelleri* and *Olearia dampieri* subsp. *eremicola* to 0.5m.

This community is represented by quadrats Q7a and Q7b
Condition: Very Good to Good

8. Mixed Closed Heath to Tall Open Scrub dominated by *Acacia aneura* var. *aneura*, *Acacia stereophylla* var. *stereophylla*, *Acacia masliniana* and *Allocasuarina acutivalvis* subsp. *prinsepiana* to 3m with scattered *Eucalyptus leptopoda* subsp. *arctata* over a Low Open Shrubland dominated by *Micromyrtus clavata* (ms) and *Melaleuca fabri* to 1.2m.

This community is represented by quadrats Q8a and Q8b
Condition: Excellent to Very Good

9. Open Woodland of *Eucalyptus loxophleba* subsp. *supralaevis* to 15m with occasional *Eucalyptus leptopoda* subsp. *arctata* and *Callitris glaucophylla* to 4m over a Shrubland dominated by *Acacia colletioides*, *Acacia tetragonophylla* and *Exocarpos aphyllus* to 3m over a Low Open Shrubland of *Olearia muelleri*, *Ptilotus obovatus* and *Atriplex bunburyana* to 1m.

This community is represented by quadrats Q9a, Q9b, Q9c and Q9d
Condition: Very Good to Good

10. Low Open Woodland of *Eucalyptus leptopoda* subsp. *arctata* to 5m with occasional *Allocasuarina acutivalvis* subsp. *prinsepiana* to 4.2m over a Tall Open Scrub of *Melaleuca uncinata* and *Acacia aneura* var. *aneura* to 4m over a Tall Shrubland dominated by *Acacia masliniana* to 3m over a Low Shrubland dominated by *Micromyrtus clavata* (ms) and *Thryptomene cuspidata* to 1m over a Very Open Herbland of *Ecdeiocolea monostachya* and *Hyalosperma glutinosum* subsp. *glutinosum* to 0.5m.

This community is represented by quadrats Q10a, Q10b, Q10c, Q10d and Q10e
Condition: Excellent to Good

11. Tall Open Scrub *Acacia longispinea*, *Acacia ramulosa* subsp. *ramulosa*, *Acacia assimilis* subsp. *assimilis* and *Grevillea paradoxa* to 3m with scattered *Allocasuarina acutivalvis* subsp. *prinsepiana*, *Eucalyptus oldfieldii* and *Eucalyptus leptopoda* subsp. *arctata* to 3m over a Shrubland dominated by *Acacia stereophylla*, *Baeckea benthamii* (ms) and *Acacia aneura* var. *aneura* to 2m over a Low Open Shrubland of *Micromyrtus clavata* (ms) and *Cryptandra* sp to 1m.

This community is represented by quadrats Q11a, Q11b and Q11c
Condition: Excellent to Very Good

12. Closed Tall Scrub of *Allocasuarina acutivalvis* subsp. *prinsepiana* to 3m with scattered *Eucalyptus leptopoda* subsp. *arctata* and *Grevillea paradoxa* to 3m over a Tall Open Scrub dominated by *Acacia aneura* var. *aneura*, *Acacia masliniana*, *Acacia ramulosa* and *Acacia anthochaera* to 2m over a Low Open Shrubland dominated by *Micromyrtus clavata* (ms) and *Acacia prainii* to 0.8m over a Very Open Herbland dominated by *Ecdeiocolea monostachya* to 0.8m.

This community is represented by quadrats Q12a, Q12b and Q12c
Condition: Excellent to Good

13. Open Woodland to Low Woodland of *Eucalyptus brachycorys* and *Callitris glaucophylla* to 4m with scattered *Santalum acuminatum* and *Eucalyptus kochii* subsp. *horistes* (ms) to 3m over a Tall Open Scrub of *Acacia aneura* var. *aneura* and *Melaleuca nematophylla* to 3m over an Open Shrubland dominated by *Alyxia buxifolia* and *Scaevola spinescens* over a Low Open Shrubland of *Ptilotus obovatus* to 0.5m.

This community is represented by quadrats Q13a, Q13b and Q13c
Condition: Very Good to Good

14. Tall Open Scrub to Tall Open Shrubland dominated by *Melaleuca scalena* and *Baeckea benthamii* (ms) to 3m with occasional *Allocasuarina acutivalvis* subsp. *prinsepiana* over a Closed Low Heath dominated by *Acacia aneura* var. *aneura* to 1m over a Very Open Herbland dominated by *Ecdeiocolea monostachya* to 0.8m.

This community is represented by quadrats Q14a and Q14b
Condition: Excellent to Good

15. Low Woodland of *Eucalyptus loxophleba* subsp. *supralaevis* and *Eucalyptus salicola* to 10m with scattered *Callitris glaucophylla* and *Hakea minyma* to 5m over a Tall Shrubland of *Acacia aneura* var. *aneura*, *Acacia anthochaera* and *Eremophila caperata* (ms) to 3m over an Open Shrubland dominated by *Gastrolobium laytonii* and *Eremophila oppositifolia* to 2m over a Low Open Shrubland of *Olearia muelleri* and *Olearia dampieri* subsp. *eremicola* to 1m.

This community is represented by quadrats Q15a, Q15b and Q15c
Condition: Very Good

16. Low Open Woodland of *Eucalyptus leptopoda* subsp. *arctata*, *Eucalyptus kochii* subsp. *plenissima* to 5m with occasional *Eucalyptus kochii* subsp. *horistes* (ms) and *Eucalyptus petraea* to 3m over a Closed Tall Scrub dominated by *Allocasuarina acutivalvis* subsp. *prinsepiana* over a Tall Shrubland dominated by *Melaleuca nematophylla*, *Acacia resinimarginea* and *Acacia acuminata* (npv) (ms) to 3.5m over an Open Shrubland dominated by *Acacia aneura* var. *aneura* to 2m.

This community is represented by quadrats Q16a, Q16b and Q16c
Condition: Excellent to Good

17. Low Open Woodland of *Eucalyptus kochii* subsp. *plenissima*, *Eucalyptus kochii* subsp. *horistes* (ms) over a Tall Open Scrub dominated by *Allocasuarina acutivalvis* subsp. *prinsepiana*, *Acacia aneura* var. *aneura*, *Micromyrtus clavata* (ms) and *Acacia acuminata* (npv) (ms) over a Low Open Shrubland dominated by *Acacia andrewsii*, *Acacia ramulosa* var. *ramulosa*, *Acacia acuaria* and *Acacia anthochaera* on clayey loamy soils.

This community is represented by quadrats Q17a, Q17b and Q17c
Condition: Excellent to Very Good

18. Tall Shrubland dominated by *Allocasuarina acutivalvis* subsp. *prinsepiana*, *Melaleuca leiocarpa* and *Calycopeplus paucifolius* with occasional *Eucalyptus petraea* and *Callitris glaucophylla* to 4m over a Tall Open Shrubland of *Acacia aneura* var. *aneura*, *Acacia acuminata* (npv) (ms) and *Acacia tetragonophylla* to 2.2m over an Open Shrubland dominated by *Hakea minyma* and *Philotheca tomentella* to 1.5m over a Very Open Herbland dominated by *Lepidosperma costale* and *Hyalosperma glutinosum* subsp. *glutinosum* on loamy clayey soils.

This community is represented by quadrats Q18a, Q18b and Q18c
Condition: Excellent to Very Good

19. Closed to Open Heath dominated by *Acacia masliniana*, *Acacia stereophylla* var. *stereophylla*, *Micromyrtus clavata* (ms), *Melaleuca fabric*, *Melaleuca cordata* and *Grevillea juncifolia* (ms) to 2.2m over a Very Open Herbland dominated by *Hyalosperma glutinosum* subsp. *glutinosum*.

This community is represented by quadrats Q19
Condition: Excellent to Very Good

20. Closed Tall Scrub dominated by *Allocasuarina acutivalvis* subsp. *prinsepiana*, *Melaleuca uncinata* and *Acacia acuminata* (npv) (ms) to 3m over an Open Shrubland dominated by *Dodonaea inaequifolia* to 1.3m over a Very Open Herbland dominated by *Lepidosperma costale* to 1m.

This community represents quadrats Q20a and Q20b
Condition: Excellent to Very Good

21. Tall Open Scrub of *Grevillea obliquistigma* subsp. *obliquistigma* and *Acacia masliniana* to 3m with scattered *Eucalyptus leptopoda* subsp. *arctata* to 3m over an Open Shrubland dominated by *Melaleuca brophyi* to 1.2m over a Very Open Sedgeland dominated by *Ecdeiocolea monostachya* to 0.3m.

This community is represented by quadrat Q21
Condition: Excellent to Very Good

22. Closed Shrubland dominated by *Acacia aneura* var. *aneura* with occasional *Melaleuca brophyi* and *Eucalyptus leptopoda* subsp. *arctata*.

This community is represented by quadrat Q22
Condition: Very Good

23. Open Heath dominated by *Melaleuca uncinata*, *Acacia prainii*, *Acacia aneura* var. *aneura* and *Acacia acuminata* (npv) (ms) to 1.6m over an Open Shrubland dominated by *Philotheca tomentella* and *Eremophila latrobei* subsp. *latrobei* (ms) to 0.5m over a Very Open Sedgeland dominated by *Ecdeiocolea monostachya* to 0.8m on yellow sandy loam.

This community is represented by quadrat Q23
Condition: Excellent to Very Good

24. Open Woodland of *Eucalyptus salicola* to 0.5m over Tall Open Scrub dominated by *Acacia aneura* var. *aneura*, *Acacia acuminata* (npv) (ms), *Acacia longispinea* and *Acacia ramulosa* var. *ramulosa* to 3m on yellow sandy loam.

This community is represented by quadrat Q24
Condition: Very Good

25. Closed Heath of *Acacia masliniana* to 2m in height over a Low Open Shrubland dominated by *Melaleuca cordata* and *Thryptomene cuspidata* to 1m in height. The area associated with this vegetation type has been burnt in the previous 2-5 years.

This community is represented by quadrat Q25
Condition: Very Good

26. Tall Open Shrubland dominated by *Hakea subsulcata* to 2m over an Open Low Heath dominated by *Micromyrtus clavata* (ms), *Hibbertia ancistrophylla* (ms) and *Philotheca brucei* subsp. *brucei* to 1m.

This community is represented by quadrat Q26
Condition: Very Good

27. Closed Heath dominated by *Melaleuca uncinata* to 2m with occasional *Eucalyptus petraea* and *Acacia assimilis* subsp. *assimilis* to 3m over a Low Open Shrubland dominated by *Acacia alata* and *Ptilotus obovatus* to 0.8m on hardpan.

This community is represented by quadrat Q27
Condition: Very Good

28. Open Woodland dominated by *Eucalyptus leptopoda* subsp. *arctata* to 15m over a Tall Shrubland dominated by *Callitris glaucophylla* and *Acacia acuminata* (npv) (ms) to 5m over a Tall Open Shrubland dominated by *Eremophila latrobei* subsp. *latrobei* (ms), *Eremophila clarkei*, *Acacia tetragonophylla*, *Dodonaea inaequifolia* and *Alyxia buxifolia* to 2.5m over a Very Open Sedgeland dominated by *Lepidosperma costale* to 0.6m on granite outcropping.

This community is represented by quadrat Q28
Condition: Good

29. Closed Tall Scrub dominated by *Acacia acuminata* (npv) (ms), *Melaleuca nematophylla*, *Grevillea scabrada* (P3) and *Baeckea benthamii* (ms) to 2.5m with occasional *Eucalyptus petraea* over a Very Open Herbland dominated by *Borya sphaerocephala*.

This community is represented by quadrat Q29

Condition: Excellent to Very Good

30. Mixed Tall Open Scrub dominated by *Acacia tetragonophylla* and *Acacia colletioides* with *Eremophila oldfieldii* subsp. *oldfieldii* and *Senna artemisioides* subsp. *x artemisioides* to 2.5m over a Very Open Herbland dominated by *Borya sphaerocephala* on granite outcropping.

This community is represented by quadrat Q30

Condition: Very Good

31. Closed Tall Scrub of *Baeckea benthamii*, *Melaleuca filifolia* and *Acacia assimilis* subsp. *assimilis* to 4m over a Low Open Shrubland of *Thryptomene cuspidata* to 1m.

This community is represented by quadrat Q31

Condition: Excellent to Very Good

32. Tall Open Scrub of *Acacia aneura* var. *aneura*, *Callitris glaucophylla*, *Grevillea obliquistigma* subsp. *obliquistigma* to 4m with scattered *Santalum acuminatum* to 3m over a Low Open Shrubland dominated by *Acacia colletioides* and *Acacia assimilis* subsp. *assimilis* to 1m.

This community is represented by quadrat Q32

Condition: Very Good

33. Closed Heath dominated by *Acacia stereophylla* var. *stereophylla* to 1.8m over an Open Shrubland dominated by *Baeckea benthamii* (ms) and *Acacia aneura* var. *aneura* to 1.5m over a Low Open Shrubland dominated by *Philothea brucei* subsp. *brucei* and *Enekbatus stowardii* to 0.4m.

This community is represented by quadrat Q33

Condition: Excellent to Very Good

34. Tall Shrubland dominated by *Melaleuca nematophylla*, *Grevillea integrifolia* and *Acacia aneura* var. *aneura* to 3m with occasional *Eucalyptus loxophleba* subsp. *supralaevis* to 15m over a Low Shrubland dominated by *Ptilotus obovatus*.

This community is represented by quadrat Q34

Condition: Good

35. Tall Shrubland dominated by *Acacia quadrimarginea*, *Acacia ramulosa* var. *ramulosa* and *Calycopeplus paucifolius* to 6m over an Open Herbland dominated by *Borya sphaerocephala* on clayey loams.

This community is represented by quadrat Q38
Condition: Very Good

3.2.2 Vegetation Significance

None of the vegetation associations described from the survey areas are classified as TEC's as described by English (2002), or listed as a TEC under the *Environmental Protection Biodiversity Conservation Act* (1999). None of the vegetation associations recorded are regarded as Regionally Significant.

3.2.3 Vegetation Condition

Vegetation condition associated with the supplementary survey area ranged from Good to Excellent according to condition rating scale condition rating scale devised by Keighery and described in *Bush Forever* (Government of Western Australia, 2000).

A description of the vegetation condition ratings relevant to the supplementary study area are outlined below.

Excellent (E) Vegetation structure intact, disturbance affecting individual species and weeds are non-aggressive species.

Very

Good (VG) Vegetation structure altered obvious signs of disturbance. For example, disturbance to vegetation structure caused by repeated fires, the presence of some more aggressive weeds, dieback, logging and grazing.

Good (G) Vegetation structure significantly altered by very obvious signs of multiple disturbance. Retains basic vegetation structure or ability to regenerate. For example, disturbance to vegetation structure caused by very frequent fires, the presence of some very aggressive weeds at high density, partial clearing, dieback and grazing.

3.3 Flora

3.3.1 Description

A total of 193 species was recorded from the November 2004 and January 2005 field surveys (Appendix 1). Of these, 192 were native species and 1 was introduced. This total compares favourably with the Bennett 2000 survey, which identified 285 taxa from a considerably larger area covering a much wider range of habitat and landforms

which was conducted at a more suitable time of the year for the identification of ephemeral and herbaceous species. Several of the taxa recorded could only be identified to genus level due to lack of flowering material. The total number of species recorded from the ATA Environmental survey included 20 Monocotyledons and 173 Dicotyledons. The families with the greatest number of species are the Myrtaceae (Eucalyptus family – 41 species) and Mimosaceae (Wattle family – 27 species). The largest representation of species was recorded for the Acacias (27 species), Eremophilas (14 species) and Melaleucas (13 species).

3.3.2 Significant Flora

According to CALM's Rare Flora databases, 37 Declared Rare and Priority listed species have been recorded from general vicinity of the Mt Gibson project area (Table 2).

TABLE 2
CALM LIST OF DECLARED RARE AND PRIORITY FLORA PREVIOUSLY
RECORDED FROM VICINITY OF MT GIBSON

CONS Code	<i>Taxa</i>
DRF	
	<i>Acacia imitans</i>
	<i>Cyphanthera odgersii</i> subsp. <i>occidentalis</i>
	<i>Darwinia masonii</i>
	<i>Eucalyptus cruces</i> subsp. <i>praecipua</i>
	<i>Eucalyptus synandra</i>
	<i>Hybanthus cymulosus</i>
	<i>Pityrodia axillaris</i>
Priority 1	
	<i>Acacia cerastes</i>
	<i>Acacia unguicula</i>
	<i>Allocasuarina tessellata</i>
	<i>Baeckea</i> sp. Paynes Find
	<i>Chamelaucium</i> ?sp. Yalgoo (Y Chadwick 1816)
	<i>Dodonaea</i> sp. Ninghan (H Demarz 5121)
	<i>Gnephosis setifera</i>
	<i>Grevillea subtiliflora</i>
	<i>Micromyrtus cuensis</i>
	<i>Micromyrtus racemosa</i> var. <i>muconata</i>
	<i>Leptospermum exsertum</i>
	<i>Philotheca nutans</i>
	<i>Rhodanthe collina</i>
	<i>Thryptomene ninghanensis</i>
Priority 2	
	<i>Acacia synoria</i>
	<i>Baeckea</i> sp. Perenjori (JW Green 1516)
	<i>Persoonia pentasticha</i>

CONS Code	Taxa
Priority 3	
	<i>Acacia acanthoclada</i> subsp. <i>glaucescens</i>
	<i>Calytrix uncinata</i>
	<i>Cryptandra imbricata</i>
	<i>Goodenia perryi</i>
	<i>Grevillea asparagoides</i>
	<i>Grevillea eriobotrya</i>
	<i>Grevillea granulosa</i>
	<i>Grevillea scabrada</i>
	<i>Podotheca uniseta</i>
	<i>Psammomoya implexa</i>
	<i>Verticordia insignis</i> subsp. <i>eomagis</i>
	<i>Verticordia venusta</i>
Priority 4	<i>Grevillea rudis</i>

The November 2004 and January 2005 supplementary flora and vegetation surveys conducted by ATA Environmental identified three Priority listed species from the study area; the Priority 1 *Acacia cerastes*, the Priority 2 listed *Persoonia pentasticha* and the Priority 3 *Grevillea scabrada*. All 3 species were recorded from the same area adjacent to granite outcropping approximately 5km north of Wanarra Rd. No mining or associated activities are proposed for this area.

Acacia cerastes is a low tangled glabrous apparently leafless shrub, growing 0.5 to 1.5m tall with a spread to 2m in diameter. CALM (2003) did not report on flowering. This species has a known distribution from the following locations: Mt Gibson and Mt Singleton (CALM 2004) where it occurs on rocky hills (Maslin, 2002). Maslin (2001) describes *Acacia cerastes* as a much-branched, intricate, glabrous shrub growing to 1.5m high. The branchlets are tortuous, terete, striate, green or brown in colour. The inflorescences are rudimentary on peduncles 3 to 4mm long with globular golden heads.

CALM records indicate there are 11 populations of *Acacia cerastes*. Of these populations at least five, those recorded by Bennett (2000), are in the general area of the project, near the Mt Gibson Range. A small population of approximately 5 plants of *Acacia cerastes* was recorded by ATA Environmental during the current survey from Mixed Closed Heath dominated by *Acacia ramulosa*, *Acacia assimilis* subsp. *assimilis*, *Melaleuca uncinata* and *Baeckea benthamii* (MGA 511555E ; 6730363N). An additional 1700 plants were recorded from the Mt Gibson lease during a targeted survey for a new *Lepidosperma* sp conducted in February 2006.

Persoonia pentasticha is a small yellow flowering shrub growing 0.3 to 1.8 m tall with a similar spread to 1 m diameter. CALM reports flowering in August. However, during the survey the plants were in full flower, extending the reported flowering period to October. This species has a known distribution from the following locations: Camel Soak, Mingenew, Mullewa, Perenjori, Yuna and Oudabunna Station.

Two small populations of this species were recorded by ATA Environmental during the supplementary surveys from two areas approximately 4km north of Wanarra Road.; 3 plants from Tall Shrubland dominated by *Melaleuca nematophylla*, *Grevillea*

integrifolia (MGA 511972E 6730763N) and 4 plants from Tall Shrubland dominated by *Melaleuca nematophylla*, *Grevillea integrifolia* and *Acacia aneura* var. *aneura* (MGA 511834E 6730195N).

Grevillea scabrida is a much branched, silvery leafed shrub growing to 1 m tall. CALM (2003) reports flowering between July. This species has a known distribution from Mt Singleton and Mt Gibson.

CALM records indicate that there are 13 populations of *Grevillea scabrida*. Of these populations, two are in the general area of the project, located to the north or east of the project area. A total of approximately 20 *Grevillea scabrida* plants from two populations (MGA 511800E 6730800N and 510932E 6730205N) were recorded by ATA Environmental during the current survey from a Closed Heath to Shrubland dominated by *Baeckea benthamii* (ms), *Acacia ramulosa*, *Acacia assimilis* subsp. *assimilis* and *Melaleuca uncinata*.

Additionally, *Gastrolobium laytonii*, which was recorded in significant numbers during the supplementary surveys from immediately adjacent to and from approximately 5km north of Wanarra Road is considered to be a possible locally endemic species. It has been previously recorded by Bennett (2000) from several vegetation types occurring over the Mt Gibson ranges. There are no other records of this taxon from elsewhere and it may require further investigation.

4. CONCLUSIONS

- A total of 35 vegetation associations were described and mapped by ATA Environmental from three main areas associated with the Mt Gibson Magnetite project area (i.e. two areas to the west of Great North Highway, one north and one south of Wanarra Rd and one area to the east of Extension Hill).
- A total of 193 plant species, including 192 native species, were recorded by ATA Environmental during the November 2004 and January 2005 supplementary surveys. The timing of the surveys was not considered optimal for the identification of many ephemeral species but was appropriate for the mapping of vegetation communities on a structural basis.
- Populations of three Priority listed taxa, the Priority 1 *Acacia cerastes*, and the Priority 2 *Persoonia pentasticha* and the Priority 2 *Grevillea scabrida* were recorded by ATA Environmental from the supplementary surveys areas. These populations are not located in areas proposed for mining.

REFERENCES

- Armstrong and Associates (2004). *Vegetation Assessment and rare Flora Search between Perenjori and Mt Gibson*. Unpublished report for Mount Gibson Iron Ltd. March 2004.
- ATA Environmental (2004). *Targeted Search at Mt Gibson for the Declared Rare Flora Darwinia masonii*. Unpublished report for Mount Gibson Iron Ltd. December 2004.
- Beard, J.S. (1976). *Vegetation Survey of Western Australia*. Murchison 1:1000000 Vegetation Series.
- Beard, J.S. (1990). *Plant Life of Western Australia*. Kangaroo Press.
- Bennett Environmental Consulting Pty Ltd. (2000). *Flora and Vegetation of Mt Gibson*, Private report prepared for MGI.
- English, V. (2002). *Identified and Possible Threatened Ecological Communities (TECs) in the Agricultural Region of South-west Western Australia*.
- Government of Western Australia (2000). *Bush Forever – Keeping the Bush in the City. Volume 1: Policies, Principles and Processes*. Perth, WA.
- Maslin, B.R. (2002). *The role and relevance of taxonomy in the conservation and utilisation of Australian Acacias*. Conservation Science Western Australia 4(3): 19 (2002)
- Maslin, B.R. (2001). *Acacia cerastes* Maslin. In *Flora of Australia*. Volume 11A, Mimosaceae, Acacia part 1 (eds A.E. Orchard & A.J.G. Wilson). CSIRO, Melbourne. p. 539
- Muir, B.G. (1977). *Biological Survey of Western Australian Wheatbelt. Part II: Vegetation and Habitat of Bendering Reserve*. Records of the Western Australian Museum
- Muir Environmental, (1995), *Observations on the presence and distribution of rare, especially Darwinia masonii, near Mt Gibson*. Unpublished report prepared for Asia Iron Limited.
- Environmental Protection Authority (2004). *Guidance for the Assessment of Environmental Factors: Terrestrial Flora and Vegetation Surveys for Environmental Impact Assessment in Western Australia*. Guidance Statement No. 51 June , 2004.
- Payne, A.L., van Vreeswyk, A.M.E., Pringle, H.J.R., Leighton, K.A. and P. Hennig (1998). *An Inventory and condition survey of the Sandstone-Yalgoo-Paynes Find area, Western Australia*. Technical Bulletin No.90. Department of Agriculture WA.

Thackway,R and I.D. Cresswell (1995). *An Interim Biogeographic Regionalisation for Australia*. Australian Nature Conservation Agency, Canberra.

FIGURES

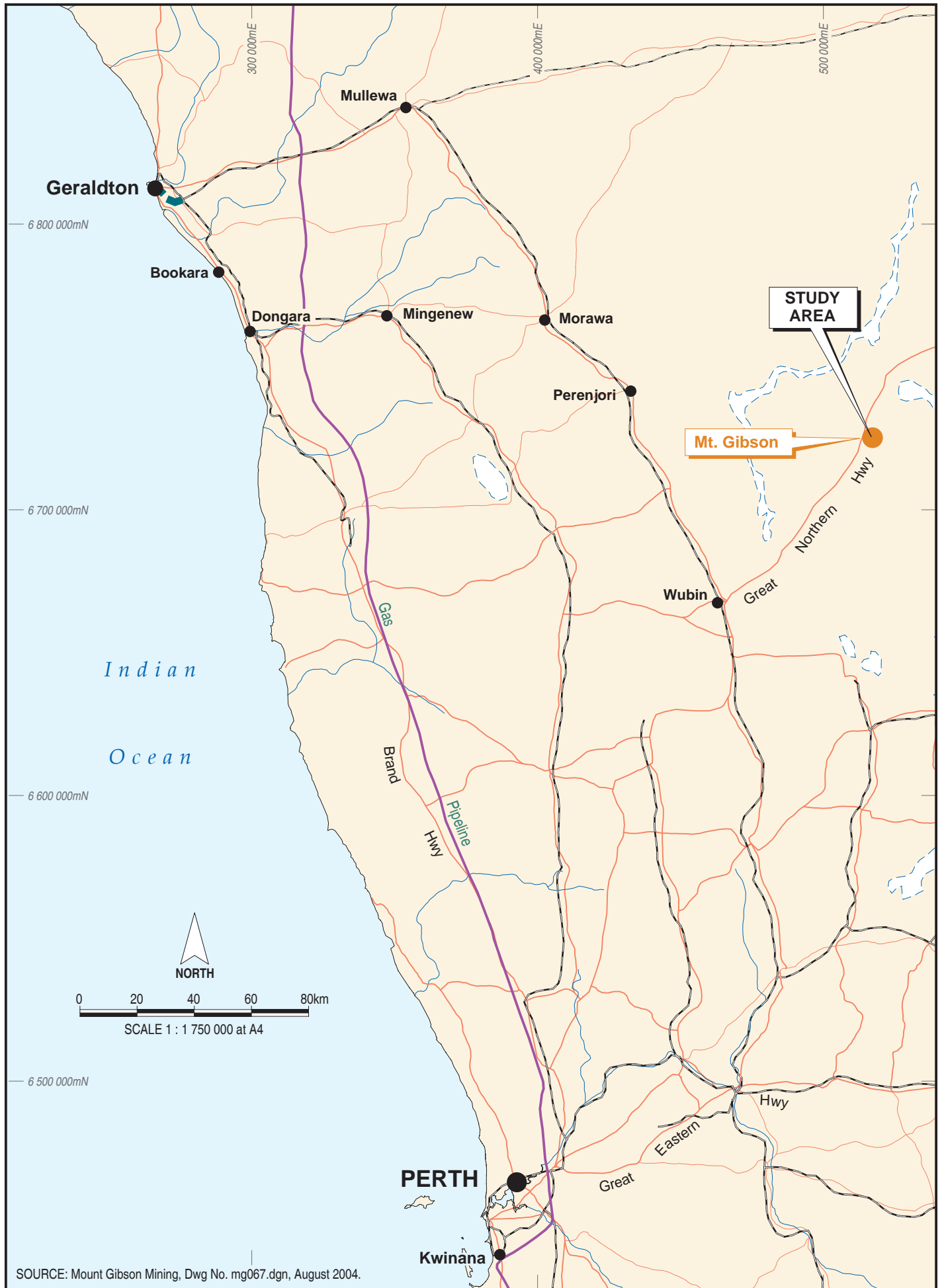
PRINTED: Thu 23 Mar 06

CHECKED BY: GMM 01-09-05

DRAWN BY: EDS 01-09-05

DATUM: AMG

MGM-2004-002/FLAS/25_149f01.dgn



SOURCE: Mount Gibson Mining, Dwg No. mg067.dgn, August 2004.




MT GIBSON MAGNETITE PROJECT
SUPPLEMENTARY VEGETATION & FLORA SURVEYS
REGIONAL LOCATION

FIGURE 1

ATA ENVIRONMENTAL CONSULTING VEGETATION ASSOCIATIONS LEGEND

- 1** Closed Heath to Tall Open Shrubland dominated by *Acacia aneura* var. *aneura*, *Calycopeplus paucifolius*, *Melaleuca uncinata* and *Aluta aspera* with scattered *Melaleuca nematophylla* over an Open Heath dominated by *Acacia assimilis* subsp. *assimilis* over a Low Open Shrubland dominated by *Thryptomene cuspidata* on lateritic gravel
Condition: Very Good
- 2** Closed Heath to Tall Open Scrub dominated by *Acacia masliniana*, *Acacia aneura* var. *aneura*, and *Allocasuarina acutivalvis* subsp. *prinsepiana* with scattered *Eucalyptus leptopoda* subsp. *arctata* over a Shrubland dominated by *Melaleuca nematophylla*, *Grevillea paradoxa* and *Micromyrtus clavata* (ms).
Condition: Very Good
- 3** Low Open Woodland dominated by *Eucalyptus kochii* subsp. *plenissima*, *Eucalyptus leptopoda* subsp. *arctata* and *Eucalyptus ebbanoensis* subsp. *ebbanoensis* with occasional *Callitris glaucophylla* and *Allocasuarina acutivalvis* subsp. *prinsepiana* over a Tall Open Shrubland dominated by *Acacia anthochaera* and *Acacia tetragonophylla* over a Shrubland of *Acacia aneura* var. *aneura* and *Hibbertia ancistrophylla* (ms) on loamy clayey soils with scattered rocks.
Condition: Excellent to Good
- 4** Closed Tall Scrub to Shrubland dominated by *Acacia aneura* var. *aneura*, *Melaleuca nematophylla*, *Baeckea* sp. with occasional *Allocasuarina acutivalvis* subsp. *prinsepiana*, *Eucalyptus kochii* subsp. *horistes* (ms) and *Eucalyptus brachycorys* over a Low Open Shrubland dominated by *Micromyrtus clavata* (ms) over a Very Open Hermland dominated by *Hyalosperma glutinosum* subsp. *glutinosum*
Condition: Excellent to Good
- 5** Closed Tall Scrub to Tall Open Scrub dominated by *Acacia aneura* var. *aneura*, *Hakea minyma* and *Allocasuarina acutivalvis* subsp. *prinsepiana* with occasional *Santalum acuminatum* over an Open Shrubland dominated by *Philothea brucei* subsp. *brucei*, *Philothea tomentella*, *Thryptomene cuspidata* and *Micromyrtus clavata* (ms)
Condition: Excellent to Good
- 6** Closed Heath to Shrubland dominated by *Baeckea benthamii* (ms), *Acacia ramulosa*, *Acacia assimilis* subsp. *assimilis* and *Melaleuca uncinata* over a Very Open Hermland dominated by *Borya sphaerocephala* and *Calandinia polyandra* associated with granite outcropping.
Condition: Very Good to Degraded
- 7** Woodland to Low Open Woodland of *Eucalyptus kochii* subsp. *plenissima*, *Eucalyptus oldfieldii* with scattered *Callitris glaucophylla* over a Tall Open Scrub dominated by *Acacia aneura* var. *aneura*, *Santalum acuminatum*, *Hakea minyma* and *Melaleuca leiocarpa* over an Open Shrubland dominated by *Alyxia buxifolia* and *Phebalium tuberculosum* over a Low Open Shrubland of *Olearia muelleri* and *Olearia dampieri* subsp. *eremicola*
Condition: Very Good to Good
- 8** Mixed Closed Heath to Tall Open Scrub dominated by *Acacia aneura* var. *aneura*, *Acacia stereophylla* var. *stereophylla*, *Acacia masliniana* and *Allocasuarina acutivalvis* subsp. *prinsepiana* with scattered *Eucalyptus leptopoda* subsp. *arctata* over a Low Open Shrubland dominated by *Micromyrtus clavata* (ms) and *Melaleuca fabri*
Condition: Excellent to Very Good
- 9** Open Woodland of *Eucalyptus loxophleba* subsp. *supralaevis* with occasional *Eucalyptus leptopoda* subsp. *arctata* and *Callitris glaucophylla* over a Shrubland dominated by *Acacia colletioides*, *Acacia tetragonophylla* and *Exocarpos aphyllus* over a Low Open Shrubland of *Olearia muelleri*, *Ptilotus obovatus* and *Atriplex bunburyana*
Condition: Very Good to Good
- 10** Low Open Woodland of *Eucalyptus leptopoda* subsp. *arctata* with occasional *Allocasuarina acutivalvis* subsp. *prinsepiana* over a Tall Open Scrub of *Melaleuca uncinata* and *Acacia aneura* var. *aneura* over a Tall Shrubland dominated by *Acacia masliniana* over a Low Shrubland dominated by *Micromyrtus clavata* (ms) and *Thryptomene cuspidata* over a Very Open Hermland of *Ecdeiocolea monostachya* and *Hyalosperma glutinosum* subsp. *glutinosum*
Condition: Excellent to Good
- 11** Tall Open Scrub *Acacia longispinea*, *Acacia ramulosa* subsp. *ramulosa*, *Acacia assimilis* subsp. *assimilis* and *Grevillea paradoxa* with scattered *Allocasuarina acutivalvis* subsp. *prinsepiana*, *Eucalyptus oldfieldii* and *Eucalyptus leptopoda* subsp. *arctata* over a Shrubland dominated by *Acacia stereophylla*, *Baeckea benthamii* (ms) and *Acacia aneura* var. *aneura* over a Low Open Shrubland of *Micromyrtus clavata* (ms) and *Cryptandra* sp.
Condition: Excellent to Very Good
- 12** Closed Tall Scrub of *Allocasuarina acutivalvis* subsp. *prinsepiana* with scattered *Eucalyptus leptopoda* subsp. *arctata* and *Grevillea paradoxa* over a Tall Open Scrub dominated by *Acacia aneura* var. *aneura*, *Acacia masliniana*, *Acacia ramulosa* and *Acacia anthochaera* over a Low Open Shrubland dominated by *Micromyrtus clavata* (ms) and *Acacia prainii* over a Very Open Hermland dominated by *Ecdeiocolea monostachya*.
Condition: Excellent to Good
- 13** Open Woodland to Low Woodland of *Eucalyptus brachycorys* and *Callitris glaucophylla* with scattered *Santalum acuminatum* and *Eucalyptus kochii* subsp. *horistes* (ms) over a Tall Open Scrub of *Acacia aneura* var. *aneura* and *Melaleuca nematophylla* over an Open Shrubland dominated by *Alyxia buxifolia* and *Scaevola spinescens* over a Low Open Shrubland of *Ptilotus obovatus*
Condition: Very Good to Good
- 14** Tall Open Scrub to Tall Open Shrubland dominated by *Melaleuca scalena* and *Baeckea benthamii* (ms) with occasional *Allocasuarina acutivalvis* subsp. *prinsepiana* over a Closed Low Heath dominated by *Acacia aneura* var. *aneura* over a Very Open Hermland dominated by *Ecdeiocolea monostachya*
Condition: Excellent to Good
- 15** Low Woodland of *Eucalyptus loxophleba* subsp. *supralaevis* and *Eucalyptus salicola* with scattered *Callitris glaucophylla* and *Hakea mynima* over a Tall Shrubland of *Acacia aneura* var. *aneura*, *Acacia anthochaera* and *Eremophila caperata* (ms) over an Open Shrubland dominated by *Gastrolobium laytonii*, *Eremophila oppositifolia* over a Low Open Shrubland of *Olearia muelleri* and *Olearia dampieri* subsp. *eremicola*
Condition: Very Good
- 16** Low Open Woodland of *Eucalyptus leptopoda* subsp. *arctata*, *Eucalyptus kochii* subsp. *plenissima* with occasional *Eucalyptus kochii* subsp. *horistes* (ms) and *Eucalyptus petraea* over a Closed Tall Scrub dominated by *Allocasuarina acutivalvis* subsp. *prinsepiana* over a Tall Shrubland dominated by *Melaleuca nematophylla*, *Acacia resinimarginea* and *Acacia acuminata* (npv) (ms) over an Open Shrubland dominated by *Acacia aneura* var. *aneura*.
Condition: Excellent to Good
- 17** Low Open Woodland of *Eucalyptus kochii* subsp. *plenissima*, *Eucalyptus kochii* subsp. *horistes* (ms) over a Tall Open Scrub dominated by *Allocasuarina acutivalvis* subsp. *prinsepiana*, *Acacia aneura* var. *aneura*, *Micromyrtus clavata* (ms) and *Acacia acuminata* (npv) (ms) over a Low Open Shrubland dominated by *Acacia andrewsii*, *Acacia ramulosa* var. *ramulosa*, *Acacia acutaria* and *Acacia anthochaera* on clayey loamy soils.
Condition: Excellent to Very Good

- 18** Tall Shrubland dominated by *Allocasuarina acutivalvis* subsp. *prinsepiana*, *Melaleuca leiocarpa* and *Calycopeplus paucifolius* with occasional *Eucalyptus petraea* and *Callitris glaucophylla* over a Tall Open Shrubland of *Acacia aneura* var. *aneura*, *Acacia acuminata* (npv) (ms) and *Acacia tetragonophylla* over an Open Shrubland dominated by *Hakea minyma* and *Philothea tomentella* over a Very Open Hermland dominated by *Lepidosperma costale* and *Hyalosperma glutinosum* subsp. *glutinosum* on loamy clayey soils.
Condition: Excellent to Very Good
- 19** Closed to Open Heath dominated by *Acacia masliniana*, *Acacia stereophylla* var. *stereophylla*, *Micromyrtus clavata* (ms), *Melaleuca fabri* and *Grevillea juncifolia* (ms) over a Low Open Shrubland of *Melaleuca cordata* and *Thryptomene cuspidata* over a Very Open Hermland dominated by *Hyalosperma glutinosum* subsp. *glutinosum*.
Condition: Excellent to Very Good
- 20** Closed Tall Scrub dominated by *Allocasuarina acutivalvis* subsp. *prinsepiana*, *Melaleuca uncinata* and *Acacia acuminata* (npv) (ms) over an Open Shrubland dominated by *Dodonaea inaequifolia* over a Very Open Hermland dominated by *Lepidosperma costale*.
Condition: Excellent to Very Good
- 21** Tall Open Scrub of *Grevillea obliquistigma* subsp. *obliquistigma* and *Acacia masliniana* with scattered *Eucalyptus leptopoda* subsp. *arctata* over an Open Shrubland dominated by *Melaleuca brophyi* over a Very Open Sedgeland dominated by *Ecdeiocolea monostachya*.
Condition: Excellent to Very Good
- 22** Closed Shrubland dominated by *Acacia aneura* var. *aneura* with occasional *Melaleuca brophyi* and *Eucalyptus leptopoda* subsp. *arctata*.
Condition: Very Good
- 23** Open Heath dominated by *Melaleuca uncinata*, *Acacia prainii*, *Acacia aneura* var. *aneura* and *Acacia acuminata* (npv) (ms) over an Open Shrubland dominated by *Philothea tomentella* and *Eremophila latrobei* subsp. *latrobei* (ms) over a Very Open Sedgelands dominated by *Ecdeiocolea monostachya* on yellow sandy loam.
Condition: Excellent to Very Good
- 24** Open Woodland of *Eucalyptus salicola* over Tall Open Scrub dominated by *Acacia aneura* var. *aneura*, *Acacia acuminata* (npv) (ms), *Acacia longispinea* and *Acacia ramulosa* var. *ramulosa* on yellow sandy loam.
Condition: Very Good
- 25** Closed Heath of *Acacia masliniana* over a Low Open Shrubland dominated by *Melaleuca cordata* and *Thryptomene cuspidata*.
Condition: Very Good
- 26** Tall Open Shrubland dominated by *Hakea subsulcata* over an Open Low Heath dominated by *Micromyrtus clavata* (ms), *Hibbertia ancistrophylla* (ms) and *Philothea brucei* subsp. *brucei*.
Condition: Very Good
- 27** Closed Heath dominated by *Melaleuca uncinata* with occasional *Eucalyptus petraea* and *Acacia assimilis* subsp. *assimilis* over a Low Open Shrubland dominated by *Acacia alata* and *Ptilotus obovatus* on hardpan.
Condition: Very Good
- 28** Open Woodland dominated by *Eucalyptus leptopoda* subsp. *arctata* over a Tall Shrubland dominated by *Callitris glaucophylla* and *Acacia acuminata* (npv) (ms) over a Tall Open Shrubland dominated by *Eremophila latrobei* subsp. *latrobei* (ms), *Eremophila clarkii*, *Acacia tetragonophylla*, *Dodonaea inaequifolia* and *Alyxia buxifolia* over a Very Open Sedgeland dominated by *Lepidosperma costale* on granite outcropping.
Condition: Very Good
- 29** Closed Tall Scrub dominated by *Acacia acuminata* (npv) (ms), *Melaleuca nematophylla*, *Grevillea scabrata* (P3) and *Baeckea benthamii* (ms) with occasional *Eucalyptus petraea* over a Very Open Hermland dominated by *Borya sphaerocephala*.
Condition: Excellent to Very Good
- 30** Mixed Tall Open Scrub dominated by *Acacia tetragonophylla* and *Acacia colletioides* with *Eremophila oldfieldii* subsp. *oldfieldii* and *Senna artemisioides* subsp. *x artemisioides* over a Very Open Hermland dominated by *Borya sphaerocephala* on granite outcropping
Condition: Very Good
- 31** Closed Tall Scrub of *Baeckea benthamii*, *Melaleuca filifolia* (P2) and *Acacia assimilis* subsp. *assimilis* over a Low Open Shrubland of *Thryptomene cuspidata*
Condition: Excellent to Very Good
- 32** Tall Open Scrub of *Acacia aneura* var. *aneura*, *Callitris glaucophylla*, *Grevillea obliquistigma* subsp. *obliquistigma* with scattered *Santalum acuminatum* over a Low Open Shrubland dominated by *Acacia colletioides* and *Acacia assimilis* subsp. *assimilis*
Condition: Very Good
- 33** Closed Heath dominated by *Acacia stereophylla* var. *stereophylla* over an Open Shrubland dominated by *Baeckea benthamii* (ms) and *Acacia aneura* var. *aneura* over a Low Open Shrubland dominated by *Philothea brucei* subsp. *brucei* and *Enekbatus stowardii*
Condition: Excellent to Very Good
- 34** Tall Shrubland dominated by *Melaleuca nematophylla*, *Grevillea integrifolia* and *Acacia aneura* var. *aneura* with occasional *Eucalyptus loxophleba* subsp. *supralaevis* over a Low Shrubland dominated by *Ptilotus obovatus*
Condition: Good
- 35** Tall Shrubland dominated by *Acacia quadrimarginea*, *Acacia ramulosa* var. *ramulosa* and *Calycopeplus paucifolius* over an Open Hermland dominated by *Borya sphaerocephala* on clayey loams.
Condition: Very Good
-  Granite Outcrop

BENNETT ENVIRONMENTAL CONSULTING VEGETATION ASSOCIATIONS LEGEND

WOODLANDS

- W1** Woodland of *Eucalyptus salmonophloia* (Salmon gum) over Thicket of *Acacia* species over Dense Low Heath dominated by *Atriplex bunburyana* on loam
- W2** Dense to Open Woodland of *Eucalyptus loxophleba* subsp. *supralaevis* with occasional *Callitris glaucophylla* over a Thicket of *Acacia* species dominated by *A.assimilis* over Herbs dominated at the time of survey by *Velleia rosea* on silty sand.
- W3** Woodland of *Eucalyptus loxophleba* subsp. *supralaevis* and *Callitris glaucophylla* over a Thicket of *Melaleuca stereophloia*, *Acacia nigripilosa* subsp. *nigripilosa*, *A. oblecta* over Low Shrubland of *Olearia dampiera* subsp. *erimicola* and *Bossiaea walkeri* and Herbs on silty sand.
- W4** Very Open Woodland of *Callitris glaucophylla* and *Eucalyptus loxophleba* subsp. *supralaevis* over an Open Thicket of *Acacia acuminata* over a Hermland in sandy loam.
- W5** Open Woodland of *Eucalyptus loxophleba* subsp. *supralaevis* with occasional *Callitris glaucophylla* over an Open Thicket of *Acacia acuminata* over a Low Shrubland of mixed species in silty clay.
- W6** Very Open Woodland of *Eucalyptus salicola* over Open Low Shrubland of mixed shrubs over Herbs and Dense Low Grass.

MALLEE COMMUNITIES

- M1** Open Tree Mallee of *Eucalyptus brachycorys*, *E. hypochlamydea* subsp. *hypochlamydea*, *E. loxophleba* subsp. *supralaevis* and *Callitris glaucophylla* over Thicket of *Acacia* species over Low Shrubland and Herbs on loam.
- M2** Very Open Tree Mallee of *Eucalyptus brachycorys* and *E. oldfieldii* over a Thicket of *Acacia anthochaera* and *A. ramulosa* over a Hermland in loamy clay.
- M3** Open Shrub Mallee of *Eucalyptus brachycorys* and *E. synandra* over Thicket of *Acacia anthochaera* and *A. ramulosa* over Low Shrubland of *Baeckea* affin. *cryptandroides* and *Ptilotus obovatus* over Herbs of *Amphipogon caricinus* subsp. *caricinus*, *Chamaexeros macrantha*, *Gilbertia tenuifolia*, *Waitzia acuminata* and *Velleia rosea*.
- M4** Very Open Shrub Mallee of *Eucalyptus leptopoda* with emergent *Eucalyptus loxophleba* subsp. *supralaevis* over Thicket of *Acacia ramulosa* over Hermland of Asteraceae species in loam.

THICKET COMMUNITIES

- T1** Dense Thicket of mixed species dominated by *Acacia* species, *Allocasuarina acutivalvis* subsp. *prinsepiana*, *Calcopeplus paucifolius*, and *Melaleuca nematophylla* over Low Shrubland in jaspilite rocks with pockets of loam.
- T2** Dense Thicket dominated by *Acacia assimilis*, *A. stereophylla* var. *stereophylla*, *A. ramulosa* and *Allocasuarina acutivalvis* var. *prinsepiana* over Low Shrubland of *Acacia acutaria*, *Hemigenia* sp. Paynes Find and *Baeckea* affin. *cryptandroides* in loam with scattered rocks on the surface.
- T3** Dense Thicket of *Acacia assimilis*, *Allocasuarina acutivalvis* subsp. *prinsepiana* and *Melaleuca nematophylla* over Low Shrubland of *Hemigenia* sp. Paynes Find and *Hibbertia crassifolia* in loam pockets in jaspilite rocks.
- T4** Dense Thicket of *Allocasuarina acutivalvis* subsp. *prinsepiana* with occasional *Eucalyptus oldfieldii* over an Open Scrub of *Acacia* species over Open Shrubland of *Hemigenia* sp. Paynes Find or Open Herbs of *Xanthosia bungei*.
- T5** Thicket of *Allocasuarina acutivalvis* subsp. *prinsepiana* and *Grevillea obliquistigma* with emergent *Callitris glaucophylla* over Low Shrubland dominated by *Darwinia masonii*, *Hibbertia crassifolia*, *Melaleuca radula* and *Philothea brucei* subsp. *brucei* over Open Herbs of *Xanthosia bungei* in loam pockets in dense jaspilite rocks.
- T6** Thicket of *Acacia aneura* and *Acacia stowardii* over Low Shrubland of mixed species with large numbers of *Darwinia masonii* in loam with abundant rocks on the surface.
- T7** Open Thicket of *Acacia ramulosa* with emergent *Callitris glaucophylla* and *Eucalyptus loxophleba* subsp. *supralaevis* over Low Shrubland and Herbs in loamy sand surrounding the lake edge.
- T8** Dense thicket of *Melaleuca* sp. Wongan Hills and *Acacia ramulosa* over low shrubland of mixed species in loamy clay soil.
- T9** Dense Thicket of *Acacia* species, *Hakea* species, *Eucalyptus brachycorys* and *E. oldfieldii* with emergent *Callitris glaucophylla*, over Open Low Shrubland of mixed species on sand.
- T10** Thicket of *Acacia acuminata*, *A. ramulosa*, *Allocasuarina acutivalvis* subsp. *prinsepiana*, *Eucalyptus hypochlamydea* subsp. *hypochlamydea* over an Open Shrubland of mixed species on sandy loam.
- T11** Thicket of *Acacia* species and *Allocasuarina acutivalvis* subsp. *prinsepiana* with emergent Very Open Mallee of *Eucalyptus brachycorys* and *E. leptopoda* in loam.
- T12** Thicket of *Acacia ramulosa* with emergent *Eucalyptus oldfieldii* and *E. loxophleba* subsp. *supralaevis* over a Low Shrubland over Herbs in loam with pebbles common on the surface.

HEATH COMMUNITIES

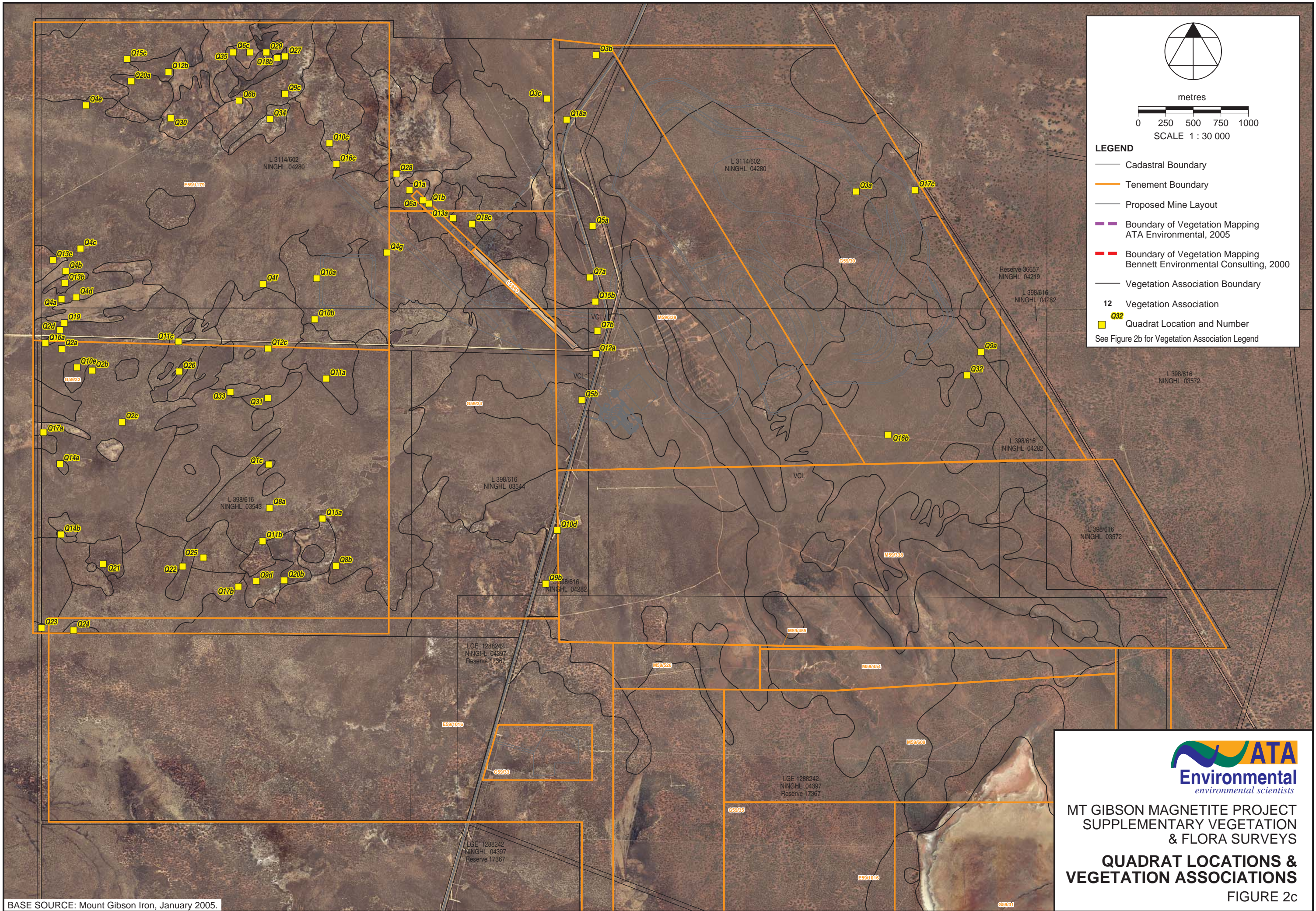
- HS1** Low Heath of *Ptilotus obovatus* with emergent shrubs of *Acacia stowardii* and *Calcopeplus paucifolius* over Herbs in loamy clay amongst large boulders.
- HS2** Dense Low Heath of *Halosarcia* species with other chenopods over Herbs in sandy clay soil in a salt lake.



MT GIBSON MAGNETITE PROJECT
SUPPLEMENTARY VEGETATION & FLORA SURVEYS

VEGETATION ASSOCIATIONS LEGEND

FIGURE 2b



metres
 0 250 500 750 1000
 SCALE 1 : 30 000

LEGEND

- Cadastral Boundary
- Tenement Boundary
- Proposed Mine Layout
- Boundary of Vegetation Mapping
ATA Environmental, 2005
- Boundary of Vegetation Mapping
Bennett Environmental Consulting, 2000
- Vegetation Association Boundary
- 12 Vegetation Association
- 32 Quadrat Location and Number
See Figure 2b for Vegetation Association Legend



MT GIBSON MAGNETITE PROJECT
 SUPPLEMENTARY VEGETATION
 & FLORA SURVEYS

**QUADRAT LOCATIONS &
 VEGETATION ASSOCIATIONS**

FIGURE 2c

APPENDICES

APPENDIX 1
MOUNT GIBSON SUPPLEMENTARY SURVEYS
FLORA SPECIES LIST

APPENDIX 1
MOUNT GIBSON SUPPLEMENTAR SURVEYS
FLORA SPECIES LIST

Family	Genus/Species
MONOCOTYLEDONS	
ANTHERICACEAE	<i>Borya sphaerocephala</i>
	<i>Thysanotus patersonii</i>
	<i>Thysanotus</i> sp.
APOCYNACEAE	<i>Alyxia buxifolia</i>
CUPRESSACEAE	<i>Callitris glaucophylla</i>
CYPERACEAE	<i>Lepidosperma costale</i>
	<i>Lepidosperma gracile</i>
	<i>Lepidosperma tenue</i>
	<i>Schoenus</i> sp.
DASYPOGONACEAE	<i>Chamaexeros macranthera</i>
	<i>Chamaexeros</i> sp.
	<i>Lomandra effusa</i>
PHORMIACEAE	<i>Dianella revoluta</i> var. <i>divaricata</i>
POACEAE	<i>Amphipogon caricinus</i>
	<i>Amphipogon turbinatus</i>
	<i>Aristida contorta</i>
	<i>Austrostipa</i> sp.
	<i>Eragrostis</i> sp.
	<i>Monachather paradoxus</i>
RESTIONACEAE	<i>Ecdeiocolea monostachya</i>
DICOTYLEDONS	
AMARANTHACEAE	<i>Ptilotus exaltatus</i> var. <i>exaltatus</i>
	<i>Ptilotus obovatus</i>
	<i>Ptilotus schwartzii</i> var. <i>schwartzii</i>
ASTERACEAE	<i>Brachyscome</i> sp.
	<i>Cephalipterum drummondii</i>
	<i>Hyalosperma glutinosum</i> subsp. <i>glutinosum</i>
	<i>Hyalosperma glutinosum</i> subsp. <i>venustum</i>
	<i>Olearia dampieri</i> subsp. <i>eremicola</i> (ms)
	<i>Olearia muelleri</i>
	<i>Olearia pimeleoides</i>

Family	Genus/Species
	<i>Olearia</i> sp.
	<i>Rhodanthe</i> sp.
BORAGINACEAE	* <i>Echium plantagineum</i>
CAESALPINACEAE	<i>Petalostylis cassioides</i>
	<i>Senna artemisioides</i> subsp. x <i>artemisioides</i>
	<i>Senna artemisioides</i> subsp. <i>filifolia</i>
	<i>Senna charlesiana</i>
	<i>Senna</i> sp. Austin (A.Strid 2010)
CASUARINACEAE	<i>Allocasuarina acutivalvis</i> subsp. <i>prinsepiana</i>
	<i>Allocasuarina campestris</i>
CHENOPODIACEAE	<i>Atriplex bunburyana</i>
	<i>Atriplex lindleyi</i> subsp. <i>inflata</i>
	<i>Atriplex nummularium</i>
	<i>Enchylaena tomentosa</i>
	<i>Halosarcia inidica</i>
	<i>Maireana georgei</i>
	<i>Maireana tomentosa</i>
	<i>Rhagodia ?latifolia</i>
	<i>Rhagodia baccata</i>
	<i>Salsola tragus</i>
	<i>Sclerolaena diacantha</i>
	<i>Sclerolaena fusiformis</i>
CHLOANTHACEAE	<i>Dicrastylis ?parvifolia</i>
	<i>Dicrastylis</i> sp.
	<i>Physopsis spicata</i>
DILLENACEAE	<i>Hibbertia acerosa</i>
	<i>Hibbertia ancistrophylla</i> (ms)
	<i>Hibbertia crassifolia</i>
	<i>Hibbertia glomerosa</i>
	<i>Hibbertia</i> sp.
DROSERACEAE	<i>Drosera glanduligera</i>
	<i>Drosera</i> sp.
EUPHORBIACEAE	<i>Calycopeplus paucifolius</i>
FRANKENIACEAE	<i>Frankenia pauciflora</i>
GOODENIACEAE	<i>Scaevola spinescens</i>
HALORAGACEAE	<i>Glischocaryon aureum</i>

Family	Genus/Species
LAMIACEAE	<i>Hemigenia</i> sp.? Paynes Find
	<i>Prostanthera eckersleyana</i>
	<i>Prostanthera magnifica</i>
	<i>Prostanthera</i> sp.
	<i>Cassytha glabella</i>
LAURACEAE	
	<i>Cassytha nodiflora</i>
	<i>Cassytha</i> sp.
MALVACEAE	<i>Alyogyne hakeifolia</i>
MIMOSACEAE	<i>Acacia acuaria</i>
	<i>Acacia acuminata</i>
	<i>Acacia acuminata</i> (npv) (ms)
	<i>Acacia alata</i>
	<i>Acacia andrewsii</i>
	<i>Acacia aneura</i> var. <i>aneura</i>
	<i>Acacia anthochaera</i>
	<i>Acacia assimilis</i>
	<i>Acacia assimilis</i> subsp. <i>assimilis</i>
	<i>Acacia burkittii</i>
	<i>Acacia cerastes</i> (P1)
	<i>Acacia colletioides</i>
	<i>Acacia coolgardiensis</i>
	<i>Acacia duriuscula</i>
	<i>Acacia erinacea</i>
	<i>Acacia kochii</i>
	<i>Acacia longispinea</i>
	<i>Acacia masliniana</i>
	<i>Acacia prainii</i>
	<i>Acacia quadrimarginea</i>
	<i>Acacia ramulosa</i>
	<i>Acacia ramulosa</i> var. <i>ramulosa</i>
	<i>Acacia resinimarginea</i>
	<i>Acacia stereophylla</i> var. <i>stereophylla</i>
	<i>Acacia stowardii</i>
	<i>Acacia tetragonophylla</i>
	<i>Acacia</i> sp.
MYOPORACEAE	<i>Eremophila ?granitica</i>
	<i>Eremophila caperata</i> (ms)
	<i>Eremophila clarkei</i>
	<i>Eremophila georgei</i>
	<i>Eremophila latrobei</i> subsp. <i>latrobei</i> (ms)
	<i>Eremophila longifolia</i>

Family	Genus/Species
	<i>Eremophila miniata</i>
	<i>Eremophila oldfieldii</i> subsp. <i>oldfieldii</i>
	<i>Eremophila oppositifolia</i>
	<i>Eremophila oppositifolia</i> subsp. <i>angustifolia</i>
	<i>Eremophila oppositifolia</i> subsp. <i>oppositifolia</i>
	<i>Eremophila pantonii</i>
	<i>Eremophila serrulata</i>
	<i>Eremophila</i> sp.
MYRTACEAE	
	<i>Aluta aspera</i> subsp. <i>hesperia</i>
	<i>Astus subroseus</i>
	<i>Baeckea benthamii</i> (ms)
	<i>Baeckea</i> sp.
	<i>Balaustion pulcherrimum</i>
	<i>Calothamnus chrysantherus</i>
	<i>Calothamnus gilesii</i>
	<i>Calothamnus rupestris</i> (P4)
	<i>Calytrix strigosa</i>
	<i>Chamelaucium pauciflorum</i> subsp. <i>pauciflorum</i> (ms)
	<i>Darwinia capitellata</i>
	<i>Darwinia</i> sp.
	<i>Enekbatus stowardii</i> (ms)
	<i>Eremaea</i> sp.
	<i>Eucalyptus brachycorys</i>
	<i>Eucalyptus ebbanoensis</i> subsp. <i>ebbanoensis</i>
	<i>Eucalyptus kochii</i> subsp. <i>horistes</i> (ms)
	<i>Eucalyptus kochii</i> subsp. <i>plenissima</i>
	<i>Eucalyptus leptopoda</i> subsp. <i>arctata</i>
	<i>Eucalyptus loxophleba</i>
	<i>Eucalyptus loxophleba</i> subsp. <i>supralaevis</i>
	<i>Eucalyptus oldfieldii</i>
	<i>Eucalyptus petraea</i>
	<i>Eucalyptus salicola</i>
	<i>Homalocalyx aureus</i>
	<i>Melaleuca brophyi</i>
	<i>Melaleuca conothamnoides</i>
	<i>Melaleuca cordata</i>
	<i>Melaleuca eleuterostachya</i>
	<i>Melaleuca fabri</i>
	<i>Melaleuca filifolia</i>
	<i>Melaleuca fulgens</i> subsp. <i>fulgens</i>
	<i>Melaleuca laterifolia</i> subsp. <i>acutifolia</i>
	<i>Melaleuca leiocarpa</i>
	<i>Melaleuca nematophylla</i>
	<i>Melaleuca radula</i>
	<i>Melaleuca scalena</i>

Family	Genus/Species
	<i>Melaleuca uncinata</i>
	<i>Micromyrtus clavata</i> (ms)
	<i>Micromyrtus</i> sp.
	<i>Thryptomene cuspidata</i>
PAPILIONACEAE	<i>Daviesia divaricata</i>
	<i>Gastrolobium laytonii</i>
	<i>Mirbelia ramulosa</i>
POLYGALACEAE	<i>Comesperma ?ciliatum</i>
PORTULACACEAE	<i>Calandrinia polyandra</i>
PROTEACEAE	<i>Grevillea dielsiana</i>
	<i>Grevillea eriostachya</i>
	<i>Grevillea integrifolia</i>
	<i>Grevillea juncifolia</i>
	<i>Grevillea levis</i>
	<i>Grevillea obliquistigma</i> subsp. <i>obliquistigma</i>
	<i>Grevillea paradoxa</i>
	<i>Grevillea scabrada</i> (P3)
	<i>Hakea francisiana</i>
	<i>Hakea invaginata</i>
	<i>Hakea minyma</i>
	<i>Hakea preissii</i>
	<i>Hakea recurva</i>
	<i>Hakea subsulcata</i>
	<i>Persoonia pentasticha</i> (P2)
	<i>Persoonia saundersiana</i>
RHAMNACEAE	<i>Cryptandra</i> sp.
RUTACEAE	<i>Phebalium tuberculosum</i>
	<i>Philotheca brucei</i> subsp. <i>brucei</i>
	<i>Philotheca tomentella</i>
SANTALACEAE	<i>Exocarpos aphyllus</i>
	<i>Santalum acuminatum</i>
	<i>Santalum spicatum</i>
SAPINDACEAE	<i>Dodonaea inaequifolia</i>
SOLANACEAE	<i>Duboisia hopwoodii</i>
	<i>Solanum lasiophyllum</i>
STERCULIACEAE	<i>Keraudrenia integrifolia</i>
	<i>Keraudrenia velutina</i> subsp. <i>velutina</i>

Family	Genus/Species
THYMELAEACEAE	<i>Pimelea brevistyla</i>
	<i>Pimelea microcephala</i>
ZYGOPHYLLACEAE	<i>Zygophyllum ?eremaeum</i>
	<i>Zygophyllum glaucum</i>
Total	193
Native species	192
Introduces Species	1

APPENDIX 2
QUADRAT DATA

QUADRAT Q1a

513099E 6729549N

Closed Heath of *Acacia aneura* var. *aneura* with *Calycopeplus pauciflorus* and *Aluta aspera* subsp. *hesperia* on lateritic gravel.

Condition: Very Good



QUADRAT Q1a (30x30m)

SPECIES	% COVER	HEIGHT (M)
<i>Acacia ramulosa</i>	2	1.6
<i>Calycopeplus pauciflorus</i>	5	1.6
<i>Acacia aneura</i> var. <i>aneura</i>	70	1.5
<i>Aluta aspera</i> subsp. <i>hesperia</i>	5	0.6
<i>Melaleuca uncinata</i>	1	0.5

QUADRAT Q1b**513275E 6729428N**

Closed Heath of *Acacia aneura* var. *aneura* with *Calycopeplus pauciflorus* and *Aluta aspera* with scattered *Melaleuca nematophylla* subsp. *hesperia* on lateritic gravel.

Condition: Very Good**QUADRAT Q1b (30x30m)**

SPECIES	% COVER	HEIGHT (M)
<i>Calycopeplus pauciflorus</i>	5	1.6
<i>Acacia aneura</i> var. <i>aneura</i>	75	1.5
<i>Aluta aspera</i> subsp. <i>hesperia</i>	5	0.6
<i>Melaleuca uncinata</i>	1	0.5
<i>Acacia ramulosa</i>	10	1.5
<i>Hyalosperma glutinosum</i> subsp. <i>glutinosum</i>	<1	0.2

QUADRAT Q1c
511821E 6727063N

Tall Open Shrubland of *Acacia aneura* var. *aneura* and *Melaleuca uncinata* over an Open Heath dominated by *Acacia assimilis* subsp. *assimilis* over *Thryptomene cuspidata* Low Open Shrubland.

Condition: Very Good



QUADRAT Q1c (30x30m)

SPECIES	% COVER	HEIGHT (M)
<i>Acacia aneura</i> var. <i>aneura</i>	5	5
<i>Melaleuca uncinata</i>	2	5
<i>Allocasuarina acutivalvis</i> subsp. <i>prinsepiana</i>	1	3
<i>Eucalyptus leptopoda</i> subsp. <i>arctata</i>	<1	3
<i>Acacia assimilis</i> subsp. <i>assimilis</i>	50	2
<i>Dianella revoluta</i> var. <i>divaricata</i>	<1	1.2
<i>Phebalium tuberosum</i>	<1	1
<i>Thryptomene cuspidata</i>	5	1
<i>Hibbertia ancistrophylla</i> (ms)	<1	0.3

QUADRAT Q2a
509943E 6728112N

Closed Heath dominated by *Acacia masliniana* and *Acacia aneura* var. *aneura* with occasional *Allocasuarina acutivalvis* subsp. *prinsepiana* over a Low Shrubland dominated by *Micromyrtus clavata* (ms) and *Cryptandra* sp. on sands.

Condition: Very Good



QUADRAT Q2a (30x30m)

SPECIES	% COVER	HEIGHT (M)
<i>Acacia assimilis</i>	1	2.2
<i>Acacia masliniana</i>	20	1.8
<i>Allocasuarina acutivalvis</i> subsp. <i>prinsepiana</i>	<1	1.8
<i>Acacia longispinea</i>	<1	1.6
<i>Acacia aneura</i> var. <i>aneura</i>	40	1.5
<i>Hakea subsulcata</i>	1	1.2
<i>Melaleuca fabri</i>	<1	0.8
<i>Micromyrtus clavata</i> (ms)	10	0.6
<i>Thryptomene cuspidata</i>	5	0.6
<i>Cryptandra</i> sp.	5	0.5
<i>Hyalosperma glutinosum</i> subsp. <i>glutinosum</i>	<1	0.05

QUADRAT Q2b
510220E 6727915N

Tall Open Scrub dominated by *Acacia aneura* var. *aneura*, *Acacia masliniana*, *Acacia assimilis* and *Allocasuarina acutivalvis* subsp. *prinsepiana* with scattered *Eucalyptus leptopoda* subsp. *arctata* over a Low Open Shrubland dominated by *Micromyrtus clavata* (ms).

Condition: Very Good



QUADRAT Q2b (30x30m)

SPECIES	% COVER	HEIGHT (M)
<i>Acacia aneura</i> var. <i>aneura</i>	15	3
<i>Acacia assimilis</i>	10	2.5
<i>Acacia masliniana</i>	15	2.5
<i>Allocasuarina acutivalvis</i> subsp. <i>prinsepiana</i>	8	2.2
<i>Acacia ramulosa</i> var. <i>ramulosa</i>	1	1.8
<i>Grevillea paradoxa</i>	<1	1.5
<i>Micromyrtus clavata</i> (ms)	10	0.5
<i>Enekbatus stowardii</i> (ms)	<1	0.3

QUADRAT Q2c
510492E 6727447N

Tall Open Scrub dominated by *Acacia masliniana*, *Allocasuarina acutivalvis* subsp. *prinsepiana* and *Acacia aneura* var. *aneura* over a Shrubland dominated by *Thryptomene cuspidata*, *Acacia acuminata* (npv) (ms) and *Grevillea paradoxa* over a Low Shrubland dominated by *Micromyrtus clavata* (ms) and *Enekbatus stowardii* (ms).

Condition: Excellent



QUADRAT Q2c (30x30m)

SPECIES	% COVER	HEIGHT (M)
<i>Acacia masliniana</i>	10	2.5
<i>Allocasuarina acutivalvis</i> subsp. <i>prinsepiana</i>	8	2.5
<i>Acacia aneura</i> var. <i>aneura</i>	15	2.2
<i>Melaleuca scalena</i>	1	2
<i>Acacia acuminata</i> (npv) (ms)	5	1.5
<i>Acacia longispinea</i>	1	1.5
<i>Thryptomene cuspidata</i>	10	1.5
<i>Grevillea paradoxa</i>	2	1.3
<i>Melaleuca cordata</i>	1	1
<i>Enekbatus stowardii</i> (ms)	2	0.5
<i>Micromyrtus clavata</i> (ms)	10	0.5
<i>Hibbertia</i> sp.	1	0.5

QUADRAT Q2d
509927E 6728283N

Tall Open Scrub of *Acacia masliniana*, *Melaleuca uncinata* and *Allocasuarina acutivalvis* subsp. *prinsepiana* over Shrubland of *Melaleuca nematophylla*, *Grevillea paradoxa* and *Micromyrtus clavata* (ms).

Condition: Very Good



QUADRAT Q2d (30x30m)

SPECIES	% COVER	HEIGHT (M)
<i>Acacia masliniana</i>	20	3
<i>Melaleuca uncinata</i>	40	3
<i>Allocasuarina acutivalvis</i> subsp. <i>prinsepiana</i>	5	3
<i>Acacia assimilis</i> subsp. <i>assimilis</i>	1	2.2
<i>Acacia aneura</i> var. <i>aneura</i>	1	2
<i>Grevillea paradoxa</i>	2	1.6
<i>Baeckea benthamii</i> (ms)	5	1.5
<i>Melaleuca nematophylla</i>	10	1.5
<i>Micromyrtus clavata</i> (ms)	5	1.1
<i>Eremophila latrobei</i> subsp. <i>latrobei</i> (ms)	<1	1
<i>Senna artemisioides</i> subsp. x <i>artemisioides</i>	1	0.8
<i>Micromyrtus clavata</i> (ms)	<1	0.5
<i>Baeckea</i> sp.	<1	0.3
<i>Darwinia</i> sp.	2	0.05
<i>Cassytha nodiflora</i>	<1	Climber

QUADRAT Q3a
517150E 6729538N

Low Open Woodland of *Eucalyptus kochii* subsp. *plenissima* with occasional *Callitris glaucophylla* over a Tall Open Shrubland of *Acacia anthochaera* and *Acacia tetragonophylla* over a Low Open Shrubland dominated by *Olearia muelleri*.

Condition: Good



QUADRAT Q3a (30x30m)

SPECIES	% COVER	HEIGHT (M)
<i>Eucalyptus kochii</i> subsp. <i>plenissima</i>	4	8
<i>Callitris glaucophylla</i>	2	4.2
<i>Allocasuarina acutivalvis</i> subsp. <i>prinsepiana</i>	2	4.1
<i>Acacia anthochaera</i>	1	2.2
<i>Acacia tetragonophylla</i>	1.5	2.1
<i>Hakea preissii</i>	<1	2
<i>Acacia acuaria</i>	<1	1
<i>Eremophila oppositifolia</i>	<1	0.9
<i>Olearia muelleri</i>	5	0.7
<i>Eremophila clarkei</i>	<1	0.6
<i>Sclerolaena fusiformis</i>	<1	0.2

QUADRAT Q3b
514793E 6730776N

Low Open Woodland dominated by *Eucalyptus kochii* subsp. *plenissima* and *Eucalyptus ebbanoensis* subsp. *ebbanoensis* with occasional *Allocasuarina acutivalvis* subsp. *prinsepiana* over a Shrubland dominated by *Acacia aneura* var. *aneura*, *Philotheca tomentella*, *Hibbertia ancistrophylla* (ms) and *Philotheca brucei* subsp. *brucei* on silty loamy soils with abundant rocks on the surface.

Condition: Excellent to Very Good



QUADRAT Q3b (30x30m)

SPECIES	% COVER	HEIGHT (M)
<i>Eucalyptus kochii</i> subsp. <i>plenissima</i>	5	8
<i>Eucalyptus ebbanoensis</i> subsp. <i>ebbanoensis</i>	2	4.2
<i>Melaleuca leiocarpa</i>	8	4.2
<i>Allocasuarina acutivalvis</i> subsp. <i>prinsepiana</i>	1.5	4
<i>Acacia aneura</i> var. <i>aneura</i>	9	2
<i>Callitris glaucophylla</i>	1	2
<i>Eremophila latrobei</i> subsp. <i>latrobei</i> (ms)	<1	1.8
<i>Micromyrtus</i> sp.	<1	1.7
<i>Philotheca tomentella</i>	12	1.5
<i>Grevillea levis</i>	1	1.4
<i>Hibbertia ancistrophylla</i> (ms)	3	1

SPECIES	% COVER	HEIGHT (M)
<i>Acacia anthochaera</i>	<1	0.8
<i>Philotheca brucei</i> subsp. <i>brucei</i>	2	0.8
<i>Eremophila clarkei</i>	<1	0.7
<i>Amphipogon caricinus</i>	<1	0.2

QUADRAT Q3c
514344E 6730380N

Low Open Woodland of *Eucalyptus kochii* subsp. *plenissima* and *Eucalyptus leptopoda* subsp. *arctata* over a Tall Open Shrubland dominated by *Melaleuca leiocarpa*, *Allocasuarina acutivalvis* subsp. *prinsepiana* and *Callitris glaucophylla* over a Shrubland dominated by *Acacia aneura* var. *aneura* and *Hibbertia ancistrophylla* (ms) on loamy clayey soils with scattered rocks.

Condition: Very Good



QUADRAT Q3c (30x30m)

SPECIES	% COVER	HEIGHT (M)
<i>Eucalyptus kochii</i> subsp. <i>plenissima</i>	5	9
<i>Eucalyptus leptopoda</i> subsp. <i>arctata</i>	2	5
<i>Melaleuca leiocarpa</i>	2	4.2
<i>Allocasuarina acutivalvis</i> subsp. <i>prinsepiana</i>	2.5	4
<i>Callitris glaucophylla</i>	1.5	4
<i>Acacia aneura</i> var. <i>aneura</i>	15	2
<i>Calycopeplus paucifolius</i>	<1	2
<i>Micromyrtus</i> sp.	1	1.5
<i>Eremophila clarkei</i>	<1	1.3
<i>Grevillea paradoxa</i>	<1	1.2
<i>Hibbertia ancistrophylla</i> (ms)	2	1.1
<i>Philotheca tomentella</i>	1	0.9
<i>Amphipogon caricinus</i>	1	0.1

QUADRAT Q4a
509942E 6728562N

Closed Tall Scrub of *Acacia aneura* var. *aneura*, *Baeckea benthamii* (ms) and *Melaleuca uncinata* with occasional *Eucalyptus kochii* subsp. *horistes* (ms) and *Melaleuca nematophylla* over a Low Open Shrubland dominated by *Micromyrtus clavata* (ms)

Condition: Excellent to Very Good



QUADRAT Q4a (30x30m)

SPECIES	% COVER	HEIGHT (M)
<i>Acacia aneura</i> var. <i>aneura</i>	5	3
<i>Acacia stereophylla</i> var. <i>stereophylla</i>	1	2.5
<i>Baeckea benthamii</i> (ms)	60	2.5
<i>Hakea subsulcata</i>	1	2.5
<i>Melaleuca uncinata</i>	30	2.5
<i>Micromyrtus clavata</i> (ms)	5	0.5
<i>Hyalosperma glutinosum</i> subsp. <i>glutinosum</i>	1	0.05

QUADRAT Q4b
509981E 6728815N

Closed Heath dominated by *Acacia aneura* var. *aneura*, *Micromyrtus clavata* (ms) and *Baeckea benthamii* (ms) with occasional *Eucalyptus brachycorys*

Condition: Good



QUADRAT Q4b (30x30m)

SPECIES	% COVER	HEIGHT (M)
<i>Eucalyptus brachycorys</i>	1	2.5
<i>Acacia aneura</i> var. <i>aneura</i>	85	1.2
<i>Baeckea benthamii</i> (ms)	5	1
<i>Micromyrtus clavata</i> (ms)	5	1
<i>Grevillea juncifolia</i>	<1	0.9
<i>Melaleuca uncinata</i>	<1	0.7
<i>Dianella revoluta</i> var. <i>divaricata</i>	12	0.6
<i>Cassytha</i> sp.	<1	Creeper
<i>Melaleuca nematophylla</i>	<1	Creeper

QUADRAT Q4c
510114E 6729020N

Closed Tall Scrub dominated by *Micromyrtus clavata* (ms), *Baeckea* sp. and *Chamelaucium pauciflorum* (ms) subsp. *pauciflorum* with scattered *Melaleuca nematophylla*.

Condition: Excellent to Very Good



QUADRAT Q4c (30x30m)

SPECIES	% COVER	HEIGHT (M)
<i>Baeckea</i> sp.	30	3
<i>Melaleuca cordata</i>	1	3
<i>Micromyrtus clavata</i> (ms)	60	3
<i>Acacia aneura</i> var. <i>aneura</i>	<1	2
<i>Chamelaucium pauciflorum</i> subsp. <i>pauciflorum</i> (ms)	9	2
<i>Hyalosperma glutinosum</i> subsp. <i>glutinosum</i>	<1	0.03
<i>Amphipogon caricinus</i>	<1	0.02
<i>Borya sphaerocephala</i>	<1	Ground cover
<i>Drosera</i> sp.	<1	Climber

QUADRAT Q4d
510076E 6728579N

Shrubland of *Melaleuca nematophylla*, *Baeckea* sp., *Acacia aneura* var. *aneura*
Micromyrtus clavata (ms) and *Acacia ramulosa*.

Condition: Excellent



QUADRAT Q4d (30x30m)

SPECIES	% COVER	HEIGHT (M)
<i>Melaleuca nematophylla</i>	20	3
<i>Baeckea</i> sp.	50	1.5
<i>Acacia aneura</i> var. <i>aneura</i>	10	3
<i>Micromyrtus clavata</i> (ms)	10	1.5
<i>Acacia ramulosa</i>	10	2

QUADRAT Q4e
510165E 6730320N

Closed Heath dominated by *Acacia aneura* var. *aneura* and *Melaleuca uncinata* with scattered *Eucalyptus brachycorys*.

Condition: Excellent to Very Good

QUADRAT Q4e (30x30m)

SPECIES	% COVER	HEIGHT (M)
<i>Eucalyptus brachycorys</i>	1	4
<i>Allocasuarina acutivalvis</i> subsp. <i>prinsepiana</i>	<1	3
<i>Acacia aneura</i> var. <i>aneura</i>	70	2
<i>Melaleuca uncinata</i>	10	2
<i>Baeckea benthamii</i> (ms)	<1	0.8
<i>Dianella revoluta</i> var. <i>divaricata</i>	<1	0.6

QUADRAT Q4f
511771E 6728699N

Closed Tall Scrub dominated by *Melaleuca nematophylla*, *Allocasuarina acutivalvis* subsp. *prinsepiana*, *Acacia aneura* var. *aneura* and *Baeckea* sp. over a Very Open Herbland dominated by *Hyalosperma glutinosum* subsp. *glutinosum*.

Condition: Excellent to Very Good



QUADRAT Q4f (30x30m)

SPECIES	% COVER	HEIGHT (M)
<i>Melaleuca nematophylla</i>	20	3
<i>Allocasuarina acutivalvis</i> subsp. <i>prinsepiana</i>	5	2.5
<i>Acacia aneura</i> var. <i>aneura</i>	70	2
<i>Acacia ramulosa</i>	2	2
<i>Dodonaea inaequifolia</i>	1	2
<i>Acacia assimilis</i> subsp. <i>assimilis</i>	<1	1.5
<i>Baeckea</i> sp.	5	1.5
<i>Hakea recurva</i>	1	1.5
<i>Baeckea benthamii</i> (ms)	5	1
<i>Keraudrenia velutina</i> subsp. <i>velutina</i>	<1	1
<i>Melaleuca leiocarpa</i>	<1	0.8
<i>Hakea subsulcata</i>	<1	0.7
<i>Micromyrtus clavata</i> (ms)	<1	0.7
<i>Dianella revoluta</i> var. <i>divaricata</i>	<1	0.6
<i>Hyalosperma glutinosum</i> subsp. <i>glutinosum</i>	2	0.03

QUADRAT Q4g
512892E 6728984N

Tall Open Scrub dominated by *Baeckea* sp., *Melaleuca nematophylla* and *Acacia aneura* var. *aneura* over a Shrubland dominated by *Baeckea benthamii* (ms) and *Hakea recurva*.

Condition: Very Good



QUADRAT Q4g (30x30m)

SPECIES	% COVER	HEIGHT (M)
<i>Melaleuca nematophylla</i>	3.5	10
<i>Baeckea</i> sp.	20	3
<i>Acacia aneura</i> var. <i>aneura</i>	30	2.5
<i>Baeckea benthamii</i> (ms)	10	1.5
<i>Hakea recurva</i>	1	1.4
<i>Dianella revoluta</i> var. <i>divaricata</i>	<1	0.6
<i>Cryptandra</i> sp.	1	0.5
<i>Homalocalyx aureus</i>	<1	0.5
<i>Hibbertia crassifolia</i>	<1	0.4
<i>Hyalosperma glutinosum</i> subsp. <i>glutinosum</i>	<1	0.03
<i>Drosera</i> sp.	<1	Climber

QUADRAT Q5a
514760E 6729224N

Closed Tall Scrub dominated by *Acacia aneura* var. *aneura* and *Allocasuarina acutivalvis* subsp. *prinsepiana* with occasional *Santalum acuminatum* over a Tall Open Shrubland of *Philotheca brucei* subsp. *brucei* and *Philotheca tomentella*.

Condition: Excellent to Very Good



QUADRAT Q5a (30x30m)

SPECIES	% COVER	HEIGHT (M)
<i>Acacia aneura</i> var. <i>aneura</i>	80	4.2
<i>Allocasuarina acutivalvis</i> subsp. <i>prinsepiana</i>	14	4
<i>Philotheca brucei</i> subsp. <i>brucei</i>	3	2.2
<i>Calycopeplus paucifolius</i>	<1	2
<i>Philotheca tomentella</i>	2	1.2
<i>Dianella revoluta</i> var. <i>divaricata</i>	<1	0.8

QUADRAT Q5b
514661E 6727647N

Tall Open Scrub of *Acacia aneura* var. *aneura*, *Allocasuarina acutivalvis* subsp. *prinsepiana* and *Hakea minyma* over an Open Shrubland dominated by *Thryptomene cuspidata* and *Micromyrtus clavata* (ms).

Condition: Very Good to Good



QUADRAT Q5b (30x30m)

SPECIES	% COVER	HEIGHT (M)
<i>Acacia aneura</i> var. <i>aneura</i>	50	4
<i>Allocasuarina acutivalvis</i> subsp. <i>prinsepiana</i>	5	3
<i>Melaleuca leiocarpa</i>	1	3
<i>Hakea minyma</i>	5	2.5
<i>Thryptomene cuspidata</i>	5	1.2
<i>Hibbertia crassifolia</i>	<1	1
<i>Micromyrtus clavata</i> (ms)	5	0.5
<i>Aluta aspersa</i> subsp. <i>hesperia</i>	<1	0.4

QUADRAT Q6a
513218E 6729458N

Shrubland dominated by *Calycopeplus paucifolius* and *Baeckea benthamii* (ms) over a Very Open Herbland dominated by *Borya sphaerocephala* and *Calandrinia polyandra*.

Condition: Good



QUADRAT Q6a (30x30m)

SPECIES	% COVER	HEIGHT (M)
<i>Hakea preissii</i>	1	2.5
<i>Calycopeplus paucifolius</i>	2	2
<i>Baeckea benthamii</i> (ms)	10	1.2
<i>Mirbelia ramulosa</i>	1	1
<i>Prostanthera magnifica</i>	<1	0.5
<i>Ptilotus obovatus</i>	<1	0.3
<i>Borya sphaerocephala</i>	5	Ground cover
<i>Calandrinia polyandra</i>	5	Ground cover
<i>Thysanotus</i> sp.	<1	0.2

QUADRAT Q6b
511555E 6730363N

Mixed Closed Heath dominated by *Acacia ramulosa*, *Acacia assimilis* subsp. *assimilis*, *Melaleuca uncinata* and *Baeckea benthamii* (ms) with occasional *Calycopeplus paucifolius* and *Acacia acuminata* (npv) (ms) over a Very Open Herbland dominated by *Borya sphaerocephala* on granite outcropping.

Condition: Very Good



QUADRAT Q6b (30x30m)

SPECIES	% COVER	HEIGHT (M)
<i>Acacia burkittii</i>	<1	3
<i>Calycopeplus paucifolius</i>	5	2
<i>Acacia acuminata</i> (npv) (ms)	2	1.8
<i>Acacia assimilis</i> subsp. <i>assimilis</i>	10	1.5
<i>Acacia cerastes</i> (P1)	<1	1.5
<i>Acacia ramulosa</i>	30	1.5
<i>Melaleuca uncinata</i>	10	1.5
<i>Micromyrtus clavata</i> (ms)	5	1.5
<i>Baeckea benthamii</i> (ms)	10	1.2
<i>Eremaea</i> sp.	<1	1
<i>Hibbertia crassifolia</i>	<1	1
<i>Acacia alata</i>	<1	0.6
<i>Lepidosperma gracile</i>	<1	0.5
<i>Calandrinia polyandra</i>	<1	0.03
<i>Borya sphaerocephala</i>	2	Ground cover

QUADRAT Q6c
511650E 6730800N

Shrubland of *Baeckea benthamii* (ms) over a Herbland dominated by *Borya spaerocephala* associated with granite outcrops.

Condition: Good to Degraded

QUADRAT Q6c(30x30m)

SPECIES	% COVER	HEIGHT (M)
<i>Baeckea benthamii</i> (ms)	15	2
<i>Dodonaea inaequifolia</i>	1	1
<i>Borya sphaerocephala</i>	40	0.2
<i>Calandrinia polyandra</i>	3	0.1

QUADRAT Q7a
514735E 6728758N

Low Open Woodland of *Eucalyptus oldfieldii* and *Eucalyptus kochii* subsp. *plenissima* with scattered *Callitris glaucophylla* over a Tall Open Scrub dominated by *Acacia aneura* var. *aneura*, *Hakea minyma* and *Melaleuca leiocarpa* over an Open Shrubland dominated by *Alyxia buxifolia* and *Phebalium tuberosum*.

Condition: Very Good to Good



QUADRAT Q7a (30x30m)

SPECIES	% COVER	HEIGHT (M)
<i>Callitris glaucophylla</i>	1	10
<i>Eucalyptus loxophleba</i> subsp. <i>supralaevis</i>	1	10
<i>Acacia aneura</i> var. <i>aneura</i>	30	5
<i>Eucalyptus kochii</i> subsp. <i>plenissima</i>	1	5
<i>Hakea minyma</i>	10	5
<i>Melaleuca leiocarpa</i>	5	4
<i>Eucalyptus oldfieldii</i>	2	3
<i>Allocasuarina acutivalvis</i> subsp. <i>prinsepiana</i>	<1	2
<i>Alyxia buxifolia</i>	3	2
<i>Eremophila caperata</i> (ms)	<1	1.5
<i>Phebalium tuberosum</i>	5	1
<i>Dianella revoluta</i> var. <i>divaricata</i>	<1	0.8
<i>Eremophila pantonii</i>	1	0.8
<i>Olearia pimeleoides</i>	<1	0.8

SPECIES	% COVER	HEIGHT (M)
<i>Thysanotus patersonii</i>	<1	Creeper

QUADRAT Q7b
514804E 6728273N

Woodland of *Eucalyptus kochii* subsp. *plenissima* and *Callitris glaucophylla* over a Tall Shrubland dominated by *Santalum acuminatum*, *Acacia aneura* var. *aneura* and *Acacia anthochaera* over an Open Shrubland dominated by *Eremophila latrobei* subsp. *latrobei* (ms) and *Alyxia buxifolia* over a Low Open Shrubland of *Olearia muelleri* and *Olearia dampieri* subsp. *eremicola* (ms).

Condition: Very Good



QUADRAT Q7b (30x30m)

SPECIES	% COVER	HEIGHT (M)
<i>Eucalyptus kochii</i> subsp. <i>plenissima</i>	10	10
<i>Callitris glaucophylla</i>	10	6
<i>Santalum acuminatum</i>	1	4
<i>Acacia aneura</i> var. <i>aneura</i>	10	3
<i>Acacia anthochaera</i>	5	2.5
<i>Hakea preissii</i>	<1	1.6
<i>Alyxia buxifolia</i>	1	1.5
<i>Eremophila latrobei</i> subsp. <i>latrobei</i> (ms)	2	1.5
<i>Olearia dampieri</i> subsp. <i>eremicola</i> (ms)	1	0.6
<i>Olearia muelleri</i>	2	0.5
<i>Eragrostis</i> sp.	<1	0.3
<i>Maireana georgei</i>	<1	0.3

QUADRAT Q8a
511830E 6726669N

Mixed Closed Heath of *Acacia aneura* var. *aneura*, *Acacia masliniana*, *Allocasuarina acutivalvis* subsp. *prinsepiana* and *Thryptomene cuspidata*.

Condition: Excellent to Very Good



QUADRAT Q8a (30x30m)

SPECIES	% COVER	HEIGHT (M)
<i>Acacia aneura</i> var. <i>aneura</i>	30	2
<i>Acacia masliniana</i>	20	2
<i>Allocasuarina acutivalvis</i> subsp. <i>prinsepiana</i>	5	2
<i>Thryptomene cuspidata</i>	10	1.8
<i>Melaleuca cordata</i>	<1	1.5
<i>Melaleuca uncinata</i>	2	1.5
<i>Hakea subsulcata</i>	1	1.2
<i>Amphipogon turbinatus</i>	<1	0.3
<i>Hibbertia ancistrophylla</i> (ms)	1	0.3
<i>Hyalosperma glutinosum</i> subsp. <i>venustum</i>	<1	0.2

QUADRAT Q8b
512431E 6726143N

Mixed Tall Open Scrub of *Allocasuarina acutivalvis* subsp. *prinsepiana*, *Acacia aneura* var. *aneura* and *Acacia stereophylla* var. *stereophylla* with scattered *Eucalyptus leptopoda* subsp. *arctata* over a Low Open Shrubland dominated by *Micromyrtus clavata* (ms) and *Melaleuca fabri*.

Condition: Very Good



QUADRAT Q8b (30x30m)

SPECIES	% COVER	HEIGHT (M)
<i>Acacia aneura</i> var. <i>aneura</i>	50	2
<i>Acacia stereophylla</i> var. <i>stereophylla</i>	5	2
<i>Allocasuarina acutivalvis</i> subsp. <i>prinsepiana</i>	5	3
<i>Melaleuca cordata</i>	1	1
<i>Micromyrtus clavata</i> (ms)	1	1
<i>Acacia longispinea</i>	<1	1.2
<i>Melaleuca fabri</i>	1	1.2
<i>Hibbertia ancistrophylla</i> (ms)	<1	0.2
<i>Hibbertia</i> sp.	<1	0.8
<i>Baeckea</i> sp.	<1	0.5

QUADRAT Q9a
518283E 6728083N

Open Woodland of *Eucalyptus loxophleba* subsp. *supralaevis* with scattered *Callitris glaucophylla* and *Exocarpos aphyllus* over an Open Shrubland of *Hakea preissii*, *Acacia burkittii* and *Acacia assimilis* subsp. *assimilis* over a Low Open Shrubland dominated by *Olearia muelleri* and *Atriplex bunburyana*.

Condition: Very Good



QUADRAT Q9a (30x30m)

SPECIES	% COVER	HEIGHT (M)
<i>Eucalyptus loxophleba</i> subsp. <i>supralaevis</i>	10	10.5
<i>Callitris glaucophylla</i>	1	4
<i>Exocarpos aphyllus</i>	1	3
<i>Acacia tetragonophylla</i>	1	2.5
<i>Acacia anthochaera</i>	<1	2
<i>Acacia burkittii</i>	2	2
<i>Hakea preissii</i>	2	2
<i>Acacia assimilis</i> subsp. <i>assimilis</i>	1	1.2
<i>Atriplex bunburyana</i>	1	1
<i>Dicrastylis ?parvifolia</i>	<1	0.9
<i>Olearia muelleri</i>	2	0.5
<i>Ptilotus obovatus</i>	<1	0.3
<i>Chamaexeros</i> sp.	<1	0.2
<i>Sclerolaena diacantha</i>	<1	0.2

QUADRAT Q9b
514334E 6725980N

Open Woodland of *Eucalyptus loxophleba* subsp. *supralaevis* over a Tall Open Scrub of *Acacia burkittii*, *Acacia aneura* var. *aneura*, *Allocasuarina acutivalvis* subsp. *prinsepiana* and *Exocarpos aphyllus* over a Shrubland dominated by *Acacia colletioides*, *Eremophila oppositifolia* subsp. *angustifolia* and *Eremophila latrobei* subsp. *latrobei* (ms).

Condition: Very Good to Good



QUADRAT Q9b (30x30m)

SPECIES	% COVER	HEIGHT (M)
<i>Eucalyptus loxophleba</i> subsp. <i>supralaevis</i>	10	15
<i>Acacia aneura</i> var. <i>aneura</i>	10	3
<i>Acacia burkittii</i>	20	3
<i>Allocasuarina acutivalvis</i> subsp. <i>prinsepiana</i>	10	3
<i>Exocarpos aphyllus</i>	2	2.5
<i>Acacia tetragonophylla</i>	<1	2
<i>Alyxia buxifolia</i>	1	2
<i>Acacia colletioides</i>	20	1.5
<i>Eremophila oppositifolia</i> subsp. <i>oppositifolia</i>	2	1.5
<i>Eremophila latrobei</i> subsp. <i>latrobei</i> (ms)	5	1.2
<i>Dianella revoluta</i> var. <i>divaricata</i>	<1	1
<i>Eremophila clarkei</i>	<1	0.6

SPECIES	% COVER	HEIGHT (M)
<i>Lepidosperma costale</i>	<1	0.6

QUADRAT Q9c
511968E 6730425N

Woodland of *Eucalyptus loxophleba* subsp. *supralaevis* with occasional *Eucalyptus leptopoda* subsp. *arctata* over a Tall Shrubland dominated by *Eremophila clarkei*, *Acacia tetragonophylla* and *Acacia colletioides* over a Low Shrubland dominated by *Ptilotus obovatus*.

Condition: Good

QUADRAT Q9c (30x30m)

SPECIES	% COVER	HEIGHT (M)
<i>Eucalyptus loxophleba</i> subsp. <i>supralaevis</i>	30	10
<i>Eucalyptus leptopoda</i> subsp. <i>arctata</i>	1	4
<i>Eremophila clarkei</i>	5	3
<i>Hakea preissii</i>	<1	3
<i>Acacia tetragonophylla</i>	5	2
<i>Santalum spicatum</i>	1	2
<i>Acacia colletioides</i>	5	1.5
<i>Dodonaea inaequifolia</i>	<1	1.5
<i>Atriplex lindleyi</i> subsp. <i>inflata</i>	<1	1
<i>Scaevola spinescens</i>	<1	1
<i>Acacia erinacea</i>	<1	0.5
<i>Senna artemisioides</i> subsp. x <i>artemisioides</i>	<1	0.5
<i>Ptilotus obovatus</i>	20	0.4
<i>Solanum lasiophyllum</i>	<1	0.4

QUADRAT Q9d
511709E 6726005N

Low Woodland of *Eucalyptus loxophleba* with scattered *Callitris glaucophylla* over Tall Open Scrub of *Acacia tetragonophylla*, *Dodonaea inaequifolia*, *Alyxia buxifolia* and *Acacia acuaria* over a Low Open Shrubland dominated by *Olearia muelleri*.

Condition: Very Good to Good



QUADRAT Q9d (30x30m)

SPECIES	% COVER	HEIGHT (M)
<i>Eucalyptus loxophleba</i>	30	8
<i>Acacia tetragonophylla</i>	3	5
<i>Callitris glaucophylla</i>	1	4
<i>Exocarpos aphyllus</i>	<1	2.5
<i>Dodonaea inaequifolia</i>	2	2
<i>Alyxia buxifolia</i>	2	2
<i>Acacia acuaria</i>	30	1.2
<i>Olearia dampieri</i> subsp. <i>eremicola</i> (ms)	<1	1
<i>Eremophila clarkei</i>	3.2	1
<i>Senna artemisioides</i> subsp. <i>filifolia</i>	<1	1
<i>Ptilotus obovatus</i>	2	0.5
<i>Olearia muelleri</i>	5	0.5
<i>Maireana tomentosa</i>	<1	0.3
<i>Aristida contorta</i>	<1	0.2

QUADRAT Q10a
512256E 6728750N

Low Open Woodland of *Eucalyptus leptopoda* subsp. *arctata* over a Tall Open Scrub dominated by *Melaleuca uncinata*, *Micromyrtus clavata* (ms) and *Acacia aneura* var. *aneura* over a Very Open Herbland dominated by *Hyalosperma glutinosum* subsp. *glutinosum*.

Condition: Very Good to Good



QUADRAT Q10a (30x30m)

SPECIES	% COVER	HEIGHT (M)
<i>Melaleuca uncinata</i>	30	4
<i>Allocasuarina acutivalvis</i> subsp. <i>prinsepiana</i>	<1	3
<i>Eucalyptus leptopoda</i> subsp. <i>arctata</i>	10	3
<i>Acacia aneura</i> var. <i>aneura</i>	5	2
<i>Micromyrtus clavata</i> (ms)	10	2
<i>Diuanella revoluta</i> var. <i>divaricata</i>	<1	0.8

SPECIES	% COVER	HEIGHT (M)
<i>Baeckea</i> sp.	<1	0.7
<i>Balaustion pulcherrimum</i>	1	0.3
<i>Cryptandra</i> sp.	<1	0.3
<i>Hyalosperma glutinosum</i> subsp. <i>glutinosum</i>	2	0.03

QUADRAT Q10b
512239E 6728379N

Low Open Woodland of *Eucalyptus leptopoda* subsp. *supralaevis* over a Tall Open Scrub dominated by *Melaleuca uncinata* over a Shrubland dominated by *Acacia masliana*, *Allocasuarina acutivalvis* subsp. *prinsepiana*, *Acacia ramulosa* and *Hakea recurva*.

Condition: Very Good



QUADRAT Q10b (30x30m)

SPECIES	% COVER	HEIGHT (M)
<i>Melaleuca uncinata</i>	40	3
<i>Hakea recurva</i>	2	2
<i>Acacia ramulosa</i>	5	2
<i>Allocasuarina acutivalvis</i> subsp. <i>prinsepiana</i>	5	2
<i>Eucalyptus leptopoda</i> subsp. <i>supralaevis</i>	5	2
<i>Acacia masliana</i>	20	2

SPECIES	% COVER	HEIGHT (M)
<i>Calothamnus gilesii</i>	1	1.2
<i>Allocasuarina campestris</i>	2	1
<i>Melaleuca conothamnoides</i>	2	0.8
<i>Micromyrtus clavata</i> (ms)	5	0.8
<i>Hyalosperma glutinosum</i> subsp. <i>glutinosum</i>	<1	0.03
<i>Cassytha</i> sp.	<1	Creeper

QUADRAT Q10c
512373E 6729976N

Low Open Woodland of *Eucalyptus leptopoda* subsp. *arctata* over a Tall Open Shrubland dominated by *Acacia acuminata* (npv) (ms) over an Open Shrubland dominated by *Acacia aneura* var. *aneura*, *Dodonaea inaequifolia* and *Acacia colletioides*.

Condition: Good



QUADRAT Q10c (30x30m)

SPECIES	% COVER	HEIGHT (M)
<i>Eucalyptus leptopoda</i> subsp. <i>arctata</i>	10	5
<i>Acacia acuminata</i> (npv) (ms)	10	3
<i>Eremophila miniata</i>	1	2.5
<i>Santalum spicatum</i>	1	2.5
<i>Eremophila oppositifolia</i>	<1	2.2
<i>Eremophila longifolia</i>	<1	1.8

SPECIES	% COVER	HEIGHT (M)
<i>Acacia aneura</i> var. <i>aneura</i>	2	1.6
<i>Acacia tetragonophylla</i>	1	1.5
<i>Dodonaea inaequifolia</i>	5	1.5
<i>Senna artemisioides</i> subsp. x <i>artemisioides</i>	1	1.3
<i>Eremophila clarkei</i>	<1	1.2
<i>Acacia colletioides</i>	5	0.6
<i>Maireana georgei</i>	<1	0.6
<i>Baeckea benthamii</i> (ms)	<1	0.5
<i>Eremophila latrobei</i> subsp. <i>latrobei</i> (ms)	<1	0.5
<i>Scaevola spinescens</i>	1	0.5
<i>Hyalosperma glutinosum</i> subsp. <i>glutinosum</i>	<1	0.03
<i>Rhodanthe</i> sp.	<1	0.02

QUADRAT Q10d
514439E 6726466N

Low Open Woodland of *Eucalyptus leptopoda* subsp. *arctata* with occasional *Allocasuarina acutivalvis* subsp. *prinsepiana* over an Open Heath dominated by *Acacia masliniana* and *Acacia aneura* var. *aneura* over a Low Open Shrubland of *Philotheca tomentella* and *Calothamnus chrysanthus* over a Very Open Herbland dominated by *Ecdeiocolea monostachya*.

Condition: Excellent



QUADRAT Q10d (30x30m)

SPECIES	% COVER	HEIGHT (M)
<i>Allocasuarina acutivalvis</i> subsp. <i>prinsepiana</i>	2	4.2
<i>Eucalyptus leptopoda</i> subsp. <i>arctata</i>	7	3.5
<i>Acacia masliniana</i>	60	1.7
<i>Acacia aneura</i> var. <i>aneura</i>	5	1.5
<i>Hakea subsulcata</i>	<1	1.5
<i>Melaleuca cordata</i>	<1	0.8
<i>Philotheca tomentella</i>	3	0.8
<i>Calothamnus chrysanthus</i>	3	0.7
<i>Hibbertia</i> sp.	<1	0.7
<i>Ecdeiocolea monostachya</i>	4	0.5

QUADRAT Q10e
510082E 6727944N

Low Open Woodland dominated by *Eucalyptus leptopoda* subsp. *arctata* with occasional *Allocasuarina acutivalvis* subsp. *prinsepiana* over a Tall Open Shrubland dominated by *Melaleuca uncinata* over a Tall Shrubland dominated by *Acacia aneura* var. *aneura* and *Acacia masliniana* over a Low Shrubland dominated by *Micromyrtus clavata* (ms) and *Thryptomene cuspidata*.

Condition: Very Good



QUADRAT Q10e (30x30m)

SPECIES	% COVER	HEIGHT (M)
<i>Melaleuca uncinata</i>	10	6.5
<i>Eucalyptus leptopoda</i> subsp. <i>arctata</i>	5	4
<i>Acacia aneura</i> var. <i>aneura</i>	10	3
<i>Acacia longispinea</i>	1	3
<i>Acacia masliniana</i>	10	3
<i>Allocasuarina acutivalvis</i> subsp. <i>prinsepiana</i>	1	2.5
<i>Melaleuca fabri</i>	1	1.4
<i>Thryptomene cuspidata</i>	10	1
<i>Phebalium tuberosum</i>	5	0.8
<i>Hakea longispinea</i>	<1	0.6
<i>Micromyrtus clavata</i> (ms)	10	0.6
<i>Enekbatus stowardii</i> (ms)	2	0.3

QUADRAT Q11a
512344E 6727841N

Tall Open Scrub of *Acacia ramulosa* var. *ramulosa* with scattered *Eucalyptus leptopoda* subsp. *arctata* over a Low Open Shrubland dominated by *Acacia longispinea* and *Micromyrtus clavata* (ms).

Condition: Excellent to Very Good



QUADRAT Q11a (30x30m)

SPECIES	% COVER	HEIGHT (M)
<i>Acacia ramulosa</i> var. <i>ramulosa</i>	60	3
<i>Eucalyptus leptopoda</i> subsp. <i>arctata</i>	2	3
<i>Acacia</i> sp.	<1	1.1
<i>Acacia longispinea</i>	2	1
<i>Melaleuca fabri</i>	<1	0.6
<i>Micromyrtus clavata</i> (ms)	1	0.6

QUADRAT Q11b
511766E 6726368N

Tall Open Scrub of *Allocasuarina acutivalvis* subsp. *prinsepiana*, *Acacia assimilis* subsp. *assimilis*, *Acacia longispinea* and *Grevillea paradoxa* with scattered *Eucalyptus kochii* subsp. *plenissima* over a Low Open Shrubland dominated by *Micromyrtus clavata* (ms).

Condition: Excellent to Very Good



QUADRAT Q11b (30x30m)

SPECIES	% COVER	HEIGHT (M)
<i>Acacia assimilis</i> subsp. <i>assimilis</i>	20	3
<i>Allocasuarina acutivalvis</i> subsp. <i>prinsepiana</i>	20	3
<i>Eucalyptus kochii</i> subsp. <i>plenissima</i>	1	3
<i>Melaleuca uncinata</i>	20	3
<i>Acacia longispinea</i>	10	2
<i>Melaleuca filifolia</i>	2	1.6
<i>Acacia aneura</i> var. <i>aneura</i>	<1	1.5
<i>Grevillea paradoxa</i>	20	1.5
<i>Hakea subsulcata</i>	<1	1.5
<i>Phebalium tuberosum</i>	<1	1
<i>Eremophila latrobei</i> subsp. <i>latrobei</i> (ms)	<1	0.5

QUADRAT Q11c
511004E 6728178N

Tall Open Scrub dominated by *Acacia masliniana* with occasional *Allocasuarina acutivalvis* subsp. *prinsepiana* and *Eucalyptus oldfieldii* over a Shrubland dominated by *Acacia stereophylla* var. *stereophylla*, *Baeckea benthamii* (ms), *Grevillea paradoxa*, *Acacia aneura* var. *aneura* and *Calothamnus chrysantherus* over a Low Shrubland dominated by *Micromyrtus clavata* (ms) and *Cryptandra* sp.

Condition: Excellent to Very Good



QUADRAT Q11c (30x30m)

SPECIES	% COVER	HEIGHT (M)
<i>Allocasuarina acutivalvis</i> subsp. <i>prinsepiana</i>	1	3
<i>Acacia masliniana</i>	60	2.2
<i>Acacia stereophylla</i> var. <i>stereophylla</i>	1.5	2
<i>Acacia aneura</i> var. <i>aneura</i>	2	1.6
<i>Baeckea benthamii</i> (ms)	4	1.6
<i>Grevillea paradoxa</i>	2	1.6
<i>Calothamnus chrysantherus</i>	3	1.5
<i>Acacia acuminata</i> (npv) (ms)	<1	1.4
<i>Dianella revoluta</i> var. <i>divaricata</i>	<1	1
<i>Micromyrtus clavata</i> (ms)	15	1
<i>Hakea subsulcata</i>	<1	0.9
<i>Melaleuca cordata</i>	1.5	0.8
<i>Melaleuca fabri</i>	1	0.7

SPECIES	% COVER	HEIGHT (M)
<i>Cryptandra</i> sp.	7	0.6
<i>Hibbertia</i> sp.	1	0.5
<i>Cassytha nodiflora</i>	<1	Creeper

QUADRAT Q12a
514791E 6728064N

Closed Tall Scrub of *Melaleuca leiocarpa* with scattered *Eucalyptus leptopoda* subsp. *arctata* over a Mixed Tall Open Scrub dominated by *Acacia ramulosa* var. *ramulosa*, *Acacia anthochaera*, *Acacia aneura* var. *aneura*, *Acacia masliniana* and *Melaleuca uncinata* over a Low Open Shrubland dominated by *Micromyrtus clavata* (ms) and *Acacia prainii*.

Condition: Very Good to Good



QUADRAT Q12a (30x30m)

SPECIES	% COVER	HEIGHT (M)
<i>Acacia anthochaera</i>	10	3
<i>Acacia ramulosa</i> var. <i>ramulosa</i>	10	3
<i>Allocasuarina acutivalvis</i> subsp. <i>prinsepiana</i>	1	3
<i>Eucalyptus leptopoda</i> subsp. <i>arctata</i>	2	3
<i>Hakea minyma</i>	<1	3
<i>Melaleuca leiocarpa</i>	70	2.5
<i>Acacia aneura</i> var. <i>aneura</i>	20	2
<i>Acacia masliniana</i>	20	2
<i>Melaleuca uncinata</i>	5	1.5
<i>Micromyrtus clavata</i> (ms)	5	0.8
<i>Dianella revoluta</i> var. <i>divaricata</i>	<1	0.6
<i>Melaleuca cordata</i>	<1	0.6
<i>Acacia prainii</i>	2	0.5
<i>Phebalium tuberosum</i>	1	0.5

SPECIES	% COVER	HEIGHT (M)
<i>Olearia muelleri</i>	<1	0.4
<i>Hibbertia ancistrophylla</i> (ms)	<1	0.2

QUADRAT Q12b
510913E 6730624N

Closed Tall Scrub dominated by *Allocasuarina acutivalvis* subsp. *prinsepiana* with occasional *Eucalyptus leptopoda* subsp. *arctata* and *Grevillea paradoxa* over a Very Open Herbland dominated by *Ecdeiocolea monostachya*.

Condition: Very Good



QUADRAT Q12b (30x30m)

SPECIES	% COVER	HEIGHT (M)
<i>Eucalyptus leptopoda</i> subsp. <i>arctata</i>	1	5
<i>Allocasuarina acutivalvis</i> subsp. <i>prinsepiana</i>	80	3
<i>Grevillea paradoxa</i>	2	2
<i>Acacia tetragonophylla</i>	1	1.5
<i>Ecdeiocolea monostachya</i>	5	0.8
<i>Darwinia</i> sp.	1	0.5
<i>Schoenus</i> sp.	<1	0.5

SPECIES	% COVER	HEIGHT (M)
<i>Dianella revoluta</i> var. <i>divaricata</i>	<1	0.4
<i>Lepidosperma tenue</i>	<1	0.4
<i>Hyalosperma glutinosum</i> subsp. <i>glutinosum</i>	<1	0.03
<i>Comesperma ?ciliatum</i>	<1	Creeper
<i>Drosera</i> sp.	<1	Creeper

QUADRAT Q12c
511815E 6728114N

Closed Tall Scrub of *Allocasuarina acutivalvis* subsp. *prinsepiana*, *Gastrolobium laytonii*, *Acacia longispinea* and *Grevillea paradoxa* over an Open Shrubland dominated by *Acacia aneura* var. *aneura* and *Hibbertia crassifolia*.

Condition: Excellent to Very Good



QUADRAT Q12c (30x30m)

SPECIES	% COVER	HEIGHT (M)
<i>Allocasuarina acutivalvis</i> subsp. <i>prinsepiana</i>	50	3
<i>Acacia longispinea</i>	10	2
<i>Gastrolobium laytonii</i>	20	2
<i>Grevillea paradoxa</i>	10	2
<i>Acacia aneura</i> var. <i>aneura</i>	2	1.5
<i>Hakea subsulcata</i>	<1	1.5
<i>Acacia stereophylla</i> var.	1	1.2

SPECIES	% COVER	HEIGHT (M)
<i>stereophylla</i>		
<i>Hibbertia crassifolia</i>	2	1.2
<i>Melaleuca filifolia</i>	<1	1.2
<i>Phebalium tuberosum</i>	<1	1.2
<i>Dianella revoluta</i> var. <i>divaricata</i>	<1	1
<i>Hibbertia ancistrophylla</i> (ms)	2	0.5
<i>Thryptomene cuspidata</i>	1	0.5
<i>Cassytha</i> sp.	<1	Creeper

QUADRAT Q13a
513496E 6729295N

Low Open Woodland of *Eucalyptus brachycorys* over a Shrubland dominated by
Acacia acuminata (npv) (ms) and *Acacia aneura* var *aneura* over a Low Open
Shrubland dominated by *Ptilotus obovatus*.

Condition: Very Good

QUADRAT Q13a (30x30m)

SPECIES	% COVER	HEIGHT (M)
<i>Eucalyptus brachycorys</i>	5	4
<i>Callitris glaucophylla</i>	10	3
<i>Allocasuarina acutivalvis</i> subsp. <i>prinsepiana</i>	10	3
<i>Acacia aneura</i> var. <i>aneura</i>	20	3
<i>Acacia acuminata</i> (npv) (ms)	5	3
<i>Acacia tetragonophylla</i>	10	2.5
<i>Acacia colletioides</i>	10	2.5
<i>Eremophila miniata</i>	1	0.8
<i>Eremophila clarkei</i>	1	0.8
<i>Dodonaea inaequifolia</i>	1	0.8
<i>Scaevola spinescens</i>	1	0.7
<i>Eremophila latrobei</i> subsp. <i>latrobei</i> (ms)	1	0.7
<i>Ptilotus obovatus</i>	1	0.4

QUADRAT Q13b
509973E 6728708N

Low Woodland of *Eucalyptus brachycorys* with *Callitris glaucophylla* over a Tall Open Scrub dominated by *Acacia aneura* var. *aneura*, *Melaleuca nematophylla* and *Micromyrtus clavata* (ms).

Condition: Very Good



QUADRAT Q13b (30x30m)

SPECIES	% COVER	HEIGHT (M)
<i>Callitris glaucophylla</i>	5	4
<i>Eucalyptus brachycorys</i>	15	4
<i>Acacia aneura</i> var. <i>aneura</i>	5	3
<i>Melaleuca nematophylla</i>	5	3
<i>Eremophila oppositifolia</i> subsp. <i>angustifolia</i>	1	2.5
<i>Acacia tetragonophylla</i>	1	2.2
<i>Melaleuca leiocarpa</i>	1	2
<i>Micromyrtus clavata</i> (ms)	50	2

SPECIES	% COVER	HEIGHT (M)
<i>Alyxia buxifolia</i>	1	1.8
<i>Eremophila clarkei</i>	1	1.5
<i>Hakea preissii</i>	1	1.2
<i>Scaevola spinescens</i>	1	0.7
<i>Olearia muelleri</i>	1	0.3
<i>Hyalopserma glutinosum</i> subsp. <i>glutinosum</i>	1	0.03
<i>Rhodanthe</i> sp.	1	0.03

QUADRAT Q13c
509865E 6728917N

Low Open Woodland of *Eucalyptus brachycorys* and *Callitris glaucophylla* with scattered *Santalum acuminatum* and *Eucalyptus kochii* subsp. *horistes* (ms) over a an Open Shrubland dominated by *Alyxia buxifolia* and *Scaevola spinescens*.

Condition: Very Good to Good



QUADRAT Q13c (30x30m)

SPECIES	% COVER	HEIGHT (M)
<i>Eucalyptus brachycorys</i>	10	4
<i>Callitris glaucophylla</i>	5	3
<i>Eucalyptus kochii</i> subsp. <i>horistes</i> (ms)	1	3
<i>Santalum acuminatum</i>	1	3
<i>Eremophila oppositifolia</i>	1	2
<i>Alyxia buxifolia</i>	5	1.8
<i>Hakea preissii</i>	1	1.2
<i>Scaevola spinescens</i>	2	1
<i>Chamelaucium pauciflorum</i> subsp. <i>pauciflorum</i> (ms)	1	0.8
<i>Acacia anthochaera</i>	1	0.5
<i>Olearia muelleri</i>	<1	0.5
<i>Ptilotus obovatus</i>	<1	0.3
<i>Hyalosperma glutinosum</i> subsp. <i>glutinosum</i>	<1	0.02

QUADRAT Q14a
509928E 6727069N

Tall Open Scrub dominated by *Melaleuca scalena* and *Baeckea benthamii* (ms) with occasional *Allocasuarina acutivalvis* subsp. *prinsepiana* over a Low Shrubland dominated by *Acacia aneura* var. *aneura*, *Astus subroseus* and *Hibbertia* sp.

Condition: Very Good to Good



QUADRAT Q14a (30x30m)

SPECIES	% COVER	HEIGHT (M)
<i>Melaleuca scalena</i>	3	3
<i>Baeckea benthamii</i> (ms)	60	2.5
<i>Acacia aneura</i> var. <i>aneura</i>	1.5	0.9
<i>Astus subroseus</i>	9	0.7
<i>Hibbertia</i> sp.	1.5	0.6
<i>Amphipogon caricinus</i>	<1	0.1
<i>Hyalopserma glutinosum</i> subsp. <i>glutinosum</i>	<1	0.1
<i>Cassytha nodiflora</i>	<1	Creeper

QUADRAT Q14b
509935E 6726428N

Tall Open Shrubland dominated by *Melaleuca scalena* with occasional *Allocasuarina acutivalvis* subsp. *prinsepiana* over a Closed Low Heath dominated by *Acacia masliniana*, *Acacia aneura* var. *aneura* and *Hakea subsulcata* over a Very Open Herbland dominated by *Ecdeiocolea monostachya*.

Condition: Excellent to Very Good

QUADRAT Q14b (30x30m)

SPECIES	% COVER	HEIGHT (M)
<i>Melaleuca scalena</i>	3	2
<i>Acacia aneura</i> var. <i>aneura</i>	8	1.2
<i>Acacia ramulosa</i> var. <i>ramulosa</i>	<1	1.2
<i>Acacia masliniana</i>	75	1
<i>Hakea subsulcata</i>	5	1
<i>Melaleuca cordata</i>	<1	1
<i>Melaleuca nematophylla</i>	1	0.9
<i>Ecdeiocolea monostachya</i>	2.5	0.8
<i>Hibbertia</i> sp.	2	0.6
<i>Micromyrtus clavata</i> (ms)	2	0.3
<i>Borya sphaerocephala</i>	<1	0.1
<i>Cassytha nodiflora</i>	<1	Creeper

QUADRAT Q15a
512310E 6726572N

Low Woodland of *Eucalyptus loxophleba* subsp. *supralaevis* and *Eucalyptus salicola* with scattered *Callitris glaucophylla* over an Open Shrubland dominated by *Gastrolobium laytonii*, *Eremophila oppositifolia*, *Allocasuarina acutivalvis* subsp. *prinsepiana* and *Dodonaea inaequifolia* over a Low Shrubland dominated by *Olearia muelleri*.

Condition: Very Good



QUADRAT Q15a (30x30m)

SPECIES	% COVER	HEIGHT (M)
<i>Eucalyptus loxophleba</i> subsp. <i>supralaevis</i>	10	10
<i>Eucalyptus salicola</i>	15	8
<i>Gastrolobium laytonii</i>	2	3
<i>Exocarpos aphyllus</i>	<1	2.5
<i>Allocasuarina acutivalvis</i> subsp. <i>prinsepiana</i>	1	2
<i>Dodonaea inaequifolia</i>	1	2
<i>Eremophila oppositifolia</i>	1	2
<i>Acacia colletioides</i>	1	1
<i>Olearia muelleri</i>	20	0.8
<i>Acacia erinacea</i>	1	0.5
<i>Frankenia pauciflora</i>	2	0.2
<i>Ptilotus obovatus</i>	1	0.2

QUADRAT Q15b
514785E 6728539N

Low Woodland of *Eucalyptus loxophleba* subsp. *supralaevis* with scattered *Callitris glaucophylla* over a Tall Shrubland dominated by *Acacia aneura* var. *aneura*, *Allocasuarina acutivalvis* subsp. *prinsepiana*, *Acacia anthochaera* and *Eremophila caperata* (ms) over a Low Open Shrubland dominated by *Olearia muelleri* and *Olearia dampieri* subsp. *eremicola* (ms).

Condition: Very Good



QUADRAT Q15b (30x30m)

SPECIES	% COVER	HEIGHT (M)
<i>Eucalyptus loxophleba</i> subsp. <i>supralaevis</i>	15	8
<i>Callitris glaucophylla</i>	1	5
<i>Acacia aneura</i> var. <i>aneura</i>	15	3
<i>Allocasuarina acutivalvis</i> subsp. <i>prinsepiana</i>	2	3
<i>Alyxia buxifolia</i>	<1	3
<i>Acacia anthochaera</i>	2	2
<i>Eremophila caperata</i> (ms)	1	2
<i>Senna charlesiana</i>	<1	1
<i>Olearia muelleri</i>	1	0.6
<i>Olearia dampieri</i> subsp. <i>eremicola</i>	<1	0.4

QUADRAT Q15c
510538E 6730739N

Low Woodland of *Eucalyptus loxophleba* subsp. *supralaevis* with scattered *Callitris glaucophylla* and *Hakea mynima* over a Tall Open Shrubland dominated by *Eremophila caperata* (ms) over an Open Shrubland dominated by *Acacia andrewsii*.

Condition: Very Good



QUADRAT Q15c (30x30m)

SPECIES	% COVER	HEIGHT (M)
<i>Eucalyptus loxophleba</i> subsp. <i>supralaevis</i>	25	6
<i>Melaleuca uncinata</i>	1	4
<i>Callitris glaucophylla</i>	2	3
<i>Hakea mynima</i>	1	3
<i>Eremophila caperata</i> (ms)	2	2.5
<i>Acacia andrewsii</i>	5	1.2
<i>Olearia dampieri</i> subsp. <i>eremicola</i> (ms)	1	1.1
<i>Baeckea</i> sp.	<1	1
<i>Eremophila latrobei</i> subsp. <i>latrobei</i> (ms)	<1	0.6
<i>Ptilotus schwartzii</i> var. <i>schwartzii</i>	<1	0.6
<i>Calytrix strigosa</i>	2	0.5
<i>Hyalosperma glutinosum</i> subsp. <i>glutinosum</i>	1	0.03

QUADRAT Q16a
509795E 6728165N

Low Open Woodland of *Eucalyptus leptopoda* subsp. *arctata* over a Tall Shrubland dominated by *Acacia resinimarginea* over an Open Shrubland dominated by *Acacia aneura* var. *aneura* and *Hakea minima*.

Condition: Very Good to Good

QUADRAT Q16a (30x30m)

SPECIES	% COVER	HEIGHT (M)
<i>Acacia resinimarginea</i>	30	3.5
<i>Eucalyptus leptopoda</i> subsp. <i>arctata</i>	8	3.5
<i>Allocasuarina acutivalvis</i> subsp. <i>prinsepiana</i>	<1	2.2
<i>Acacia aneura</i> var. <i>aneura</i>	5	2
<i>Hakea minyma</i>	2	1.2
<i>Melaleuca fabri</i>	<1	1
<i>Phebalium tuberculosum</i>	2	0.6
<i>Micromyrtus clavata</i> (ms)	30	0.5
<i>Hibbertia ancistrophylla</i> (ms)	2	0.3
<i>Cassytha nodiflora</i>	<1	Creeper

QUADRAT Q16b
517439E 6727332N

Low Open Woodland of *Eucalyptus kochii* subsp. *plenissima* and *Eucalyptus loxophleba* subsp. *supralaevis* over a Closed Tall Scrub of *Allocasuarina acutivalvis* subsp. *prinsepiana* over an Open Shrubland dominated by *Acacia colletioides*, *Acacia anthochaera* and *Acacia aneura* var. *aneura*.

Condition: Excellent to Very Good



QUADRAT Q16b (30x30m)

SPECIES	% COVER	HEIGHT (M)
<i>Eucalyptus loxophleba</i> subsp. <i>supralaevis</i>	1	10
<i>Eucalyptus kochii</i> subsp. <i>plenissima</i>	5	5
<i>Grevillea obliquistigma</i> subsp. <i>obliquistigma</i>	1	4
<i>Allocasuarina acutivalvis</i> subsp. <i>prinsepiana</i>	80	3
<i>Acacia colletioides</i>	2	2
<i>Acacia anthochaera</i>	2	1.5
<i>Acacia aneura</i> var. <i>aneura</i>	2	1
<i>Aluta aspersa</i> subsp. <i>hesperia</i>	<1	1
<i>Melaleuca leiocarpa</i>	<1	0.6
<i>Hibbertia ancistrophylla</i> (ms)	<1	0.5

QUADRAT Q16c
512436E 6729786N

Low Open Woodland of *Eucalyptus leptopoda* subsp. *arctata* with occasional *Eucalyptus kochii* subsp. *horistes* (ms) and *Eucalyptus petraea* over a Tall Open Scrub dominated by *Melaleuca nematophylla*, *Acacia aneura* var. *aneura*, *Dodonaea inaequifolia*, *Acacia acuminata* (npv) (ms) and *Allocasuarina acutivalvis* subsp. *prinsepiana* on clay hardpan.

Condition: Very Good to Good



QUADRAT Q16c (30x30m)

SPECIES	% COVER	HEIGHT (M)
<i>Eucalyptus leptopoda</i> subsp. <i>arctata</i>	10	6
<i>Acacia aneura</i> var. <i>aneura</i>	25	5
<i>Acacia tetragonophylla</i>	<1	3
<i>Eucalyptus kochii</i> subsp. <i>horistes</i> (ms)	<1	3
<i>Eucalyptus petraea</i>	<1	2.5
<i>Melaleuca nematophylla</i>	5	2.5
<i>Acacia acuminata</i> (npv) (ms)	5	2
<i>Allocasuarina acutivalvis</i> subsp. <i>acutivalvis</i>	5	2
<i>Dodonaea inaequifolia</i>	10	2
<i>Eremophila clarkei</i>	1	2
<i>Melaleuca uncinata</i>	<1	2
<i>Eremophila oppositifolia</i> subsp.	<1	1.5

SPECIES	% COVER	HEIGHT (M)
<i>angustifolia</i>		
<i>Grevillea paradoxa</i>	2	1.5
<i>Scaevola spinescens</i>	<1	1.2
<i>Mirbelia ramulosa</i>	<1	0.9
<i>Acacia colletioides</i>	2	0.8
<i>Eremophila latrobei</i> subsp. <i>latrobei</i> (ms)	<1	0.8
<i>Micromyrtus clavata</i> (ms)	20	0.8
<i>Cryptandra</i> sp.	<1	0.3

QUADRAT Q17a
509783E 6727336N

Low Open Woodland of *Eucalyptus kochii* subsp. *horistes* (ms) over a Tall Open Scrub dominated by *Allocasuarina acutivalvis* subsp. *prinsepiana*, *Acacia aneura* var. *aneura*, *Micromyrtus clavata* (ms) and *Acacia acuminata* (npv) (ms) over a Low Open Shrubland dominated by *Acacia andrewsii* and *Philotheca brucei* subsp. *brucei* on clayey soils.

Condition: Excellent to Very Good



QUADRAT Q17a (30x30m)

SPECIES	% COVER	HEIGHT (M)
<i>Eucalyptus kochii</i> subsp. <i>horistes</i> (ms)	4	4.5
<i>Allocasuarina acutivalvis</i> subsp. <i>prinsepiana</i>	8	2.2
<i>Acacia acuminata</i> (npv) (ms)	3	2
<i>Acacia aneura</i> var. <i>aneura</i>	15	2
<i>Acacia tetragonophylla</i>	2	2
<i>Micromyrtus clavata</i> (ms)	6	1.8
<i>Melaleuca nematophylla</i>	2	1.6
<i>Acacia andrewsii</i>	5	1
<i>Eremophila</i> sp.	1	1
<i>Dodonaea inaequifolia</i>	<1	0.9
<i>Hakea preissii</i>	<1	0.8
<i>Philotheca brucei</i> subsp. <i>brucei</i>	2	0.7
<i>Baeckea benthamii</i> (ms)	<1	0.6
<i>Hibbertia</i> sp.	<1	0.4

SPECIES	% COVER	HEIGHT (M)
<i>Hyalosperma glutinosum</i> subsp. <i>glutinosum</i>	<1	0.05

QUADRAT Q17b
511547E 6725955N

Low Open Woodland of *Eucalyptus kochii* subsp. *plenissima* over a Tall Open Shrubland dominated by *Allocasuarina acutivalvis* subsp. *prinsepiana* and *Acacia aneura* var. *aneura* over a Low Open Shrubland dominated by *Acacia ramulosa* var. *ramulosa* and *Acacia anthochaera* on clayey loam.

Condition: Excellent to Very Good



QUADRAT Q17b (30x30m)

SPECIES	% COVER	HEIGHT (M)
<i>Eucalyptus kochii</i> subsp. <i>plenissima</i>	5	4
<i>Acacia aneura</i> var. <i>aneura</i>	60	3
<i>Allocasuarina acutivalvis</i> subsp. <i>prinsepiana</i>	10	3
<i>Melaleuca leiocarpa</i>	5	3
<i>Hakea minyma</i>	<1	2.5
<i>Acacia anthochaera</i>	1	2
<i>Acacia ramulosa</i> var. <i>ramulosa</i>	2	2
<i>Acacia acuaria</i>	<1	1.2
<i>Hakea subsulcata</i>	2.5	1
<i>Dianella revoluta</i> var. <i>divaricata</i>	<1	0.6
<i>Hibbertia crassifolia</i>	<1	0.6
<i>Alyxia buxifolia</i>	<1	0.5
<i>Micromyrtus clavata</i> (ms)	2	0.5
<i>Phebalium tuberculosum</i>	<1	0.5

QUADRAT Q17c
517687E 6729550N

Low Open Woodland of *Eucalyptus kochii* subsp. *plenissima* and *Allocasuarina acutivalvis* subsp. *prinsepiana* over a Tall Shrubland dominated by *Acacia tetragonophylla* and *Alyxia buxifolia* over a Low Open Shrubland dominated by *Acacia acuaria* on clayey loamy soils with scattered rocks.

Condition: Excellent to Very Good



QUADRAT Q17c (30x30m)

SPECIES	% COVER	HEIGHT (M)
<i>Eucalyptus kochii</i> subsp. <i>plenissima</i>	3	9
<i>Allocasuarina acutivalvis</i> subsp. <i>prinsepiana</i>	5	4
<i>Santalum acuminatum</i>	<1	2.5
<i>Acacia tetragonophylla</i>	20	2.2
<i>Melaleuca scalena</i>	1	2.2
<i>Alyxia buxifolia</i>	3	2.1
<i>Acacia acuminata</i> (npv) (ms)	1.5	2
<i>Hakea preissii</i>	<1	1.6
<i>Acacia aneura</i> var. <i>aneura</i>	2	1.4
<i>Dodonaea inaequifolia</i>	<1	1.4
<i>Eremophila clarkei</i>	1	1.4
<i>Grevillea juncifolia</i>	1.5	1.4
<i>Acacia andrewsii</i>	2	1.2
<i>Eremophila latrobei</i> subsp. <i>latrobei</i> (ms)	1.5	1

SPECIES	% COVER	HEIGHT (M)
<i>Acacia acuaria</i>	5	0.8
<i>Chamaexeros macranthera</i>	<1	0.4
<i>Olearia</i> sp.	<1	0.4
<i>Amphipogon caricinus</i>	1.5	0.2
<i>Borya sphaerocephala</i>	<1	0.1
<i>Cassytha nodiflora</i>	<1	Creeper

QUADRAT Q18a
514525E 6730189N

Tall Shrubland dominated by *Allocasuarina acutivalvis* subsp. *prinsepiana* and *Calycopeplus paucifolius* with occasional *Callitris glaucophylla* over a Tall Open Shrubland of *Acacia aneura* var. *aneura*, *Acacia acuminata* (npv) (ms) and *Acacia tetragonophylla* over an Open Shrubland dominated by *Hakea minyma* and *Philotheca tomentella* on loamy clayey soils with scattered rocks.

Condition: Very Good



QUADRAT Q18a (30x30m)

SPECIES	% COVER	HEIGHT (M)
<i>Santalum acuminatum</i>	<1	4.5
<i>Allocasuarina acutivalvis</i> subsp. <i>prinsepiana</i>	8	4
<i>Calycopeplus paucifolius</i>	3	4
<i>Acacia aneura</i> var. <i>aneura</i>	3	2.2
<i>Acacia acuminata</i> (npv) (ms)	4	2.1
<i>Acacia tetragonophylla</i>	2	2.1
<i>Hakea minyma</i>	3	1.5
<i>Philotheca tomentella</i>	40	1.4
<i>Micromyrtus</i> sp.	<1	1.3
<i>Amphipogon caricinus</i>	1	0.2

QUADRAT Q18b
511900E 6730750N

Tall Shrubland of *Acacia burkittii*, *Allocasuarina acutivalvis* subsp. *prinsepiana*, *Calycopeplus paucifolius*, *Melaleuca radula* with occasional *Eucalyptus petraea* over a Very Open Herbland dominated by *Lepidosperma costale* and *Hyalosperma glutinosum* subsp. *glutinosum* on red clayey loam

Condition: Very Good to Excellent

QUADRAT Q18b (30x30m)

SPECIES	% COVER	HEIGHT (M)
<i>Acacia burkittii</i>	5	6
<i>Allocasuarina acutivalvis</i> subsp. <i>prinsepiana</i>	2	6
<i>Eucalyptus petraea</i>	1	4
<i>Calycopeplus paucifolius</i>	20	2.5
<i>Melaleuca radula</i>	3	2.4
<i>Acacia acuminata</i> (npv) (ms)	3	2
<i>Lepidosperma costale</i>	8	1
<i>Hyalosperma glutinosum</i> subsp. <i>glutinosum</i>	<1	0.1

QUADRAT Q18c
513820E 6729125N

Tall Open Scrub dominated by *Allocasuarina acutivalvis* subsp. *prinsepiana* and *Melaleuca leiocarpa* with occasional *Callitris glaucophylla* an Open Shrubland dominated by *Acacia aneura* var. *aneura*, *Eremophila clarkei* and *Baeckea benthamii* (ms).

Condition: Good

QUADRAT Q18c (30x30m)

SPECIES	% COVER	HEIGHT (M)
<i>Allocasuarina acutivalvis</i> subsp. <i>prinsepiana</i>	30	4
<i>Melaleuca leiocarpa</i>	10	4
<i>Callitris glaucophylla</i>	1	3
<i>Acacia aneura</i> var. <i>aneura</i>	2	2
<i>Eremophila miniata</i>	<1	2
<i>Acacia tetragonophylla</i>	<1	1.8
<i>Alyxia buxifolia</i>	<1	1.5
<i>Baeckea benthamii</i> (ms)	2	1.5
<i>Eremophila clarkei</i>	5	1.5
<i>Eremophila latrobei</i> subsp. <i>latrobei</i> (ms)	<1	1.2
<i>Cryptandra</i> sp.	<1	1
<i>Scaevola spinescens</i>	<1	0.5

QUADRAT Q19
509968E 6728346N

Open Heath of *Acacia masliniana*, *Acacia sterophylla* var. *sterophylla*, *Micromyrtus clavata*, *Melaleuca fabri*, *Melaleuca cordata* and *Grevillea juncifolia* (ms) over Very Open Herbland dominated by *Hyalosperma glutinosum* subsp. *glutinosum*.

Condition: Very Good to Excellent



QUADRAT Q19 (30x30m)

SPECIES	% COVER	HEIGHT (M)
<i>Grevillea juncifolia</i>	2	2.2
<i>Acacia sterophylla</i> var. <i>sterophylla</i>	5	2
<i>Melaleuca cordata</i>	1	2
<i>Acacia masliniana</i>	40	1.5
<i>Acacia aneura</i> var. <i>aneura</i>	2	1.5
<i>Melaleuca fabri</i>	5	1.4
<i>Baeckea benthamii</i> (ms)	2	1.2
<i>Micromyrtus clavata</i> (ms)	5	1
<i>Dianella revoluta</i> var. <i>divaricata</i>	<1	0.6
<i>Grevillea paradoxa</i>	1	0.5
<i>Aluta aspera</i> subsp. <i>hesperia</i>	<1	0.4
<i>Hyalosperma glutinosum</i> subsp. <i>glutinosum</i>	5	0.2
<i>Cassytha nodiflora</i>	<1	Climber

QUADRAT Q20a
510573E 6730537N

Closed Tall Scrub dominated by *Allocasuarina acutivalvis* subsp. *prinsepiana* and *Melaleuca uncinata* over a Very Open Herbland dominated by *Lepidosperma costale*.

Condition: Very Good



QUADRAT Q20a (30x30m)

SPECIES	% COVER	HEIGHT (M)
<i>Allocasuarina acutivalvis</i> subsp. <i>prinsepiana</i>	60	3
<i>Melaleuca uncinata</i>	30	3
<i>Grevillea paradoxa</i>	1	2
<i>Acacia aneura</i> var. <i>aneura</i>	<1	1
<i>Lepidosperma costale</i>	5	1
<i>Hyalosperma glutinosum</i> subsp. <i>glutinosum</i>	<1	0.03
<i>Borya sphercephala</i>	2	Ground cover

QUADRAT Q20b
511964E 6726012N

Closed Tall Scrub of *Allocasuarina acutivalvis* subsp. *prinsepiana* and *Acacia acuminata* (npv) (ms) over an Open Shrubland dominated by *Dodonaea inaequifolia* and *Melaleuca uncinata*.

Condition: Very Good to Excellent



QUADRAT Q20b (30x30m)

SPECIES	% COVER	HEIGHT (M)
<i>Acacia acuminata</i> (npv) (ms)	30	3
<i>Acacia assimilis</i> subsp. <i>assimilis</i>	<1	3
<i>Allocasuarina acutivalvis</i> subsp. <i>prinsepiana</i>	50	3
<i>Melaleuca uncinata</i>	2	2.2
<i>Eremophila clarkei</i>	1	1.8
<i>Baeckea</i> sp.	<1	1.5
<i>Dodonaea inaequifolia</i>	2	1.3
<i>Acacia aneura</i> var. <i>aneura</i>	1	1.2
<i>Eremophila latrobei</i> subsp. <i>latrobei</i> (ms)	1	1

QUADRAT Q21
510320E 6726161N

Tall Open Scrub of *Grevillea obliquistigma* subsp. *obliquistigma* and *Acacia masliniana* with scattered *Eucalyptus leptopoda* subsp. *arctata* over an Open Shrubland dominated by *Melaleuca brophyi* over a Very Open Sedgeland dominated by *Ecdeiocolea monostachya*.

Condition: Excellent to Very Good



QUADRAT Q21 (30x30m)

SPECIES	% COVER	HEIGHT (M)
<i>Eucalyptus leptopoda</i> subsp. <i>arctata</i>	2	3
<i>Grevillea obliquistigma</i> subsp. <i>obliquistigma</i>	50	3
<i>Acacia masliniana</i>	20	2
<i>Melaleuca brophyi</i>	5	1.2
<i>Micromyrtus clavata</i> (ms)	2	0.5
<i>Ecdeiocolea monostachya</i>	2	0.3

QUADRAT Q22

511041E 6726138N

Closed Shrubland dominated by *Acacia aneura* var. *aneura* with occasional *Melaleuca brophyi* and *Eucalyptus leptopoda* subsp. *arctata*.

Condition: Very Good

QUADRAT Q22 (30x30m)

SPECIES	% COVER	HEIGHT (M)
<i>Acacia aneura</i> var. <i>aneura</i>	80	2
<i>Melaleuca brophyi</i>	3	2.2
<i>Eucalyptus leptopoda</i> subsp. <i>arctata</i>	2	3

QUADRAT Q23

509761E 6725582

Open Heath dominated by *Melaleuca uncinata*, *Acacia prainii*, *Acacia aneura* var. *aneura* and *Acacia acuminata* (npv) (ms) over an Open Shrubland dominated by *Philotheca tomentella* and *Eremophila latrobei* subsp. *latrobei* (ms) over a Very Open Sedgeland dominated by *Ecdeiocolea monostachya* on yellow sandy loam.

Condition: Very Good to Excellent



QUADRAT Q23 (30x30m)

SPECIES	% COVER	HEIGHT (M)
<i>Acacia acuminata</i> (npv) (ms)	10	1.6
<i>Melaleuca uncinata</i>	40	1.5
<i>Acacia aneura</i> var. <i>aneura</i>	10	1.3
<i>Acacia masliana</i>	20	1.2
<i>Acacia longispinea</i>	<1	1
<i>Acacia prainii</i>	<1	1
<i>Hakea subsulcata</i>	<1	1
<i>Dianella revoluta</i> var. <i>divaricata</i>	<1	0.8
<i>Ecdeiocolea monostachya</i>	2	0.8
<i>Thryptomene cuspidata</i>	<1	0.6
<i>Acacia ramulosa</i> var. <i>ramulosa</i>	<1	0.5
<i>Eremophila latrobei</i> subsp. <i>latrobei</i> (ms)	2	0.5
<i>Philotheca tomentella</i>	5	0.5
<i>Phebalium tuberosum</i>	<1	0.4
<i>Hyalosperma glutinosum</i> subsp. <i>glutinosum</i>	<1	0.2

QUADRAT Q24
510052E 6725560N

Open Woodland of *Eucalyptus salicicola* over Tall Open Scrub dominated by *Acacia aneura* var. *aneura*, *Acacia acuminata* (npv) (ms), *Acacia longispinea* and *Acacia ramulosa* var. *ramulosa* on yellow sandy loam.

Condition: Very Good



QUADRAT Q24 (30x30m)

SPECIES	% COVER	HEIGHT (M)
<i>Eucalyptus salicicola</i>	10	5
<i>Acacia acuminata</i> (npv) (ms)	5	3
<i>Acacia aneura</i> var. <i>aneura</i>	20	3
<i>Acacia colletioides</i>	<1	2
<i>Acacia longispinea</i>	5	1.6
<i>Acacia prainii</i>	<1	1.5
<i>Acacia ramulosa</i> var. <i>ramulosa</i>	5	1.5
<i>Dianella revoluta</i> var. <i>divaricata</i>	<1	1
<i>Eremophila caperata</i> (ms)	<1	1
<i>Eremophila georgei</i>	<1	0.5
<i>Phebalium tuberculosum</i>	<1	0.5
<i>Ptilotus obovatus</i>	<1	0.5
<i>Austrostipa</i> sp.	<1	0.3
<i>Hyalosperma glutinosum</i> subsp. <i>glutinosum</i>	<1	0.1
<i>Thysanotus patersonii</i>	<1	Creeper

QUADRAT Q25

511230E 6726218N

Closed Heath of *Acacia masliniana* over a Low Open Shrubland dominated by *Melaleuca cordata* and *Thryptomene cuspidata*.

Condition: Very Good



QUADRAT Q25 (30x30m)

SPECIES	% COVER	HEIGHT (M)
<i>Acacia masliniana</i>	80	2
<i>Acacia aneura</i> var. <i>aneura</i>	<1	1
<i>Melaleuca cordata</i>	5	1
<i>Melaleuca uncinata</i>	<1	1
<i>Dianella revoluta</i> var. <i>divaricata</i>	<1	0.5
<i>Thryptomene cuspidata</i>	2	0.5

QUADRAT Q26
511011E 6727906N

Tall Open Shrubland dominated by *Hakea subsulcata* over an Open Low Heath dominated by *Micromyrtus clavata* (ms), *Hibbertia ancistrophylla* (ms) and *Philotheca brucei* subsp. *brucei*.

Condition: Very Good



QUADRAT Q26 (30x30m)

SPECIES	% COVER	HEIGHT (M)
<i>Acacia stereophylla</i> var. <i>stereophylla</i>	<1	2.2
<i>Hakea subsulcata</i>	3	2
<i>Melaleuca cordata</i>	1	1.2
<i>Hibbertia ancistrophylla</i> (ms)	15	1
<i>Micromyrtus clavata</i> (ms)	40	1
<i>Philotheca brucei</i> subsp. <i>brucei</i>	7	0.8
<i>Hyalosperma glutinosum</i> subsp. <i>glutinosum</i>	1	0.1

QUADRAT Q27
511972E 6730763N

Closed Heath dominated by *Melaleuca uncinata* with occasional *Eucalyptus petraea* and *Acacia assimilis* subsp. *assimilis* over a Low Open Shrubland dominated by *Acacia alata* and *Ptilotus obovatus* on hardpan.

Condition: Very Good



QUADRAT Q27 (30x30m)

SPECIES	% COVER	HEIGHT (M)
<i>Allocasuarina acutivalvis</i> subsp. <i>prinsepiana</i>	<1	3
<i>Eucalyptus petraea</i>	2	3
<i>Melaleuca uncinata</i>	90	2
<i>Acacia assimilis</i> subsp. <i>assimilis</i>	1	1.8
<i>Acacia alata</i>	3	0.8
<i>Persoonia pentasticha</i> (P2)	<1	0.5
<i>Ptilotus obovatus</i>	2	0.5

QUADRAT Q28
512981E 6729700N

Open Woodland dominated by *Eucalyptus leptopoda* subsp. *arctata* over a Tall Shrubland dominated by *Callitris glaucophylla* and *Acacia acuminata* (npv) (ms) over a Tall Open Shrubland dominated by *Eremophila latrobei* subsp. *latrobei* (ms), *Eremophila clarkei*, *Acacia tetragonophylla*, *Dodonaea inaequifolia* and *Alyxia buxifolia* over a Very Open Sedgeland dominated by *Lepidosperma costale* on granite outcropping.

Condition: Very Good



QUADRAT Q28 (30x30m)

SPECIES	% COVER	HEIGHT (M)
<i>Eucalyptus leptopoda</i> subsp. <i>arctata</i>	10	15
<i>Callitris glaucophylla</i>	2	5
<i>Acacia acuminata</i> (npv) (ms)	10	4
<i>Eremophila latrobei</i> subsp. <i>latrobei</i> (ms)	2	2.5
<i>Acacia tetragonophylla</i>	2	2
<i>Eremophila clarkei</i>	2	2
<i>Eremophila oppositifolia</i> subsp. <i>angustifolia</i>	<1	2
<i>Dodonaea inaequitifolia</i>	2	1.8
<i>Alyxia buxifolia</i>	2	1.2
<i>Maireana georgei</i>	<1	1
<i>Olearia muelleri</i>	<1	0.8

SPECIES	% COVER	HEIGHT (M)
<i>Acacia colletioides</i>	1	0.6
<i>Lepidoseprma costale</i>	5	0.6
<i>Ptilotus obovatus</i>	1	0.5
<i>Eremophila miniata</i>	<1	0.3

QUADRAT Q29
511800E 6730800N

Closed Tall Scrub dominated by *Acacia acuminata* (npv) (ms), *Melaleuca nematophylla*, *Grevillea scabrida* (P3) and *Baeckea benthamii* (ms) with occasional *Eucalyptus petraea* over a Very Open Herbland dominated by *Borya sphaerocephala*.
Condition: Excellent to Very Good

QUADRAT Q29 (30x30m)

SPECIES	% COVER	HEIGHT (M)
<i>Acacia acuminata</i> (npv) (ms)	60	2.5
<i>Grevillea scabrida</i> (P3)	3	2
<i>Melaleuca nematophylla</i>	5	2
<i>Baeckea benthamii</i> (ms)	10	1.2
<i>Scaevola spinescens</i>	<1	0.8
<i>Dodonaea inaequitifolia</i>	<1	0.7
<i>Borya sphaerocephala</i>	6	0.1
<i>Hyalopserma glutinosum</i> subsp. <i>glutinosum</i>	1	0.1

QUADRAT Q30
510932E 6730205N

Mixed Tall Open Scrub dominated by *Acacia tetragonophylla* and *Acacia colletioides* with *Eremophila oldfieldii* subsp. *oldfieldii* and *Senna artemisioides* subsp. *x artemisioides* over a Very Open Herbland dominated by *Borya sphaerocephala* on granite outcropping.

Condition: Very Good



QUADRAT Q30 (30x30m)

SPECIES	% COVER	HEIGHT (M)
<i>Melaleuca leiocarpa</i>	1	3
<i>Acacia tetragonophylla</i>	20	2.5
<i>Eremophila oldfieldii</i> subsp. <i>oldfieldii</i>	5	2
<i>Melaleuca radula</i>	<1	2
<i>Senna artemisioides</i> subsp. <i>x artemisioides</i>	5	1.5
<i>Acacia colletioides</i>	20	1.2
<i>Baeckea benthamii</i> (ms)	2	1.2
<i>Acacia kochii</i>	2	1
<i>Scaevola spinescens</i>	1	1
<i>Grevillea scabrada</i> (P3)	<1	0.8
<i>Enchylaena tomentosa</i>	<1	0.3
<i>Ptilotus obovatus</i>	<1	0.3
<i>Calandrinia polyandra</i>	1	0.01
<i>Borya sphaerocephala</i>	5	Ground cover
<i>Zygophyllum ?eremaum</i>	<1	Creeper

QUADRAT Q31
511814E 6727665N

Closed Tall Scrub of *Baeckea benthamii* (ms), *Melaleuca filifolia* and *Acacia assimilis* subsp. *assimilis* over a Low Open Shrubland of *Thryptomene cuspidata*.

Condition: Excellent to Very Good



QUADRAT Q31 (30x30m)

SPECIES	% COVER	HEIGHT (M)
<i>Baeckea benthamii</i> (ms)	30	4
<i>Melaleuca filifolia</i>	30	4
<i>Acacia assimilis</i> subsp. <i>assimilis</i>	20	3
<i>Acacia stereophylla</i> var. <i>stereophylla</i>	2	2
<i>Melaleuca cordata</i>	<1	2
<i>Thryptomene cuspidata</i>	5	1
<i>Hibbertia ancistrophylla</i> (ms)	2	0.2

QUADRAT Q32
518156E 6727872N

Tall Open Scrub of *Acacia aneura* var. *aneura*, *Callitris glaucophylla*, *Grevillea obliquistigma* subsp. *obliquistigma* with scattered *Santalum acuminatum* over a Low Open Shrubland dominated by *Acacia colletioides* and *Acacia assimilis* subsp. *assimilis*.

Condition: Very Good



QUADRAT Q32 (30x30m)

SPECIES	% COVER	HEIGHT (M)
<i>Acacia aneura</i> var. <i>aneura</i>	30	4
<i>Callitris glaucophylla</i>	5	4
<i>Grevillea obliquistigma</i> subsp. <i>obliquistigma</i>	5	3
<i>Santalum acuminatum</i>	1	3
<i>Acacia tetragonophylla</i>	<1	2.5
<i>Acacia burkittii</i>	<1	2
<i>Alyxia buxifolia</i>	<1	1.5
<i>Acacia anthochaera</i>	<1	1
<i>Acacia assimilis</i> subsp. <i>assimilis</i>	1	1
<i>Acacia colletioides</i>	1	1
<i>Eremophila clarkei</i>	<1	0.6
<i>Scaevola spinescens</i>	<1	0.6
<i>Olearia</i> sp.	<1	0.3

QUADRAT Q33
511474E 6727719N

Closed Heath dominated by *Acacia stereophylla* var. *stereophylla* over an Open Shrubland dominated by *Baeckea benthamii* (ms) and *Acacia aneura* var. *aneura* over a Low Open Shrubland dominated by *Philotheca brucei* subsp. *brucei* and *Enekbatus stowardii* (ms).

Condition: Excellent to Very Good



QUADRAT Q33 (30x30m)

SPECIES	% COVER	HEIGHT (M)
<i>Acacia stereophylla</i> var. <i>stereophylla</i>	80	1.8
<i>Acacia aneura</i> var. <i>aneura</i>	1.5	1.5
<i>Baeckea benthamii</i> (ms)	2	1.4
<i>Hakea subsulcata</i>	1	1
<i>Melaleuca cordata</i>	<1	1
<i>Acacia acuminata</i> (npv) (ms)	<1	0.9
<i>Dianella revoluta</i> var. <i>divaricata</i>	<1	0.7
<i>Enekbatus stowardii</i> (ms)	1.5	0.4
<i>Philotheca brucei</i> subsp. <i>brucei</i>	3	0.4
<i>Amphipogon caricinus</i>	<1	0.1
<i>Borya sphaerocephala</i>	<1	0.1
<i>Cassytha nodiflora</i>	<1	Creeper

QUADRAT Q34
511834E 6730195N

Tall Shrubland dominated by *Melaleuca nematophylla*, *Grevillea integrifolia* and *Acacia aneura* var. *aneura* with occasional *Eucalyptus loxophleba* subsp. *supralaevis* over a Low Shrubland dominated by *Ptilotus obovatus*.

Condition: Good



QUADRAT Q34 (30x30m)

SPECIES	% COVER	HEIGHT (M)
<i>Eucalyptus loxophleba</i> subsp. <i>supralaevis</i>	2	15
<i>Acacia microbotrya</i>	1	3
<i>Grevillea integrifolia</i>	10	3
<i>Melaleuca nematophylla</i>	10	3
<i>Acacia aneura</i> var. <i>aneura</i>	5	2
<i>Dodonaea inaequifolia</i>	2	1.2
<i>Eremophila clarkei</i>	1	1
<i>Daviesia divaricata</i>	<1	0.5
<i>Eremophila latrobei</i> subsp. <i>latrobei</i> (ms)	<1	0.5
<i>Ptilotus obovatus</i>	30	0.5
<i>Persoonia pentasticha</i> (P2)	<1	0.4
<i>Chamaexeros macranthera</i>	<1	0.3

QUADRAT Q35
511500E 6730800N

Tall Shrubland dominated by *Acacia quadrimarginea*, *Acacia ramulosa* var. *ramulosa* and *Calycopeplus paucifolius* over an Open Herbland dominated by *Borya sphaerocephala* on clayey loams.

Condition: Good

QUADRAT Q35 (30x30m)

SPECIES	% COVER	HEIGHT (M)
<i>Acacia quadrimarginea</i>	7	6
<i>Acacia ramulosa</i> var. <i>ramulosa</i>	2	2.2
<i>Calycopeplus paucifolius</i>	7	2
<i>Acacia acuminata</i> (npv) (ms)	3	1.5
<i>Acacia alata</i>	5	1.4
<i>Scaevola spinescens</i>	1	0.8
<i>Acacia kochii</i>	<1	0.2
<i>Borya sphaerocephala</i>	10	0.2
<i>Hyalosperma glutinosum</i> subsp. <i>glutinosum</i>	2	0.2
<i>Rhodanthe</i> sp.	1	0.2