



| | |
|--------------------|--|
| Title | Nine new species of Begonia (Begoniaceae) from South and West Sulawesi, Indonesia |
| Author(s) | Thomas, DC; Ardi, WH; Hughes, M |
| Citation | Edinburgh Journal of Botany, 2011, v. 68 n. 2, p. 225-255 |
| Issued Date | 2011 |
| URL | http://hdl.handle.net/10722/136247 |
| Rights | Edinburgh Journal of Botany. Copyright © Cambridge University Press. |

NINE NEW SPECIES OF *BEGONIA* (BEGONIACEAE) FROM SOUTH AND WEST SULAWESI, INDONESIA

D. C. THOMAS¹, W. H. ARDI² & M. HUGHES³

Nine new species of *Begonia* (Begoniaceae), *Begonia comestibilis* D.C.Thomas & Ardi, *B. insueta* D.C.Thomas & Ardi, *B. lasioura* D.C.Thomas & Ardi, *B. nobmanniae* D.C.Thomas & Ardi, *B. prionota* D.C.Thomas & Ardi, *B. rantemarioensis* D.C.Thomas & Ardi, *B. sanguineopilosa* D.C.Thomas & Ardi, *B. torajana* D.C.Thomas & Ardi and *B. vermeulenii* D.C.Thomas, are described from South and West Sulawesi, Indonesia. All belong to *Begonia* section *Petermannia*. Proposed conservation categories for these species are Vulnerable (VU) for *Begonia comestibilis*, *B. nobmanniae*, *B. prionota*, *B. sanguineopilosa* and *B. vermeulenii*; Least Concern (LC) for *B. lasioura*, *B. rantemarioensis* and *B. torajana*; and Data Deficient (DD) for *B. insueta*. An identification key to *Begonia* in South and West Sulawesi (Sulawesi Selatan and Sulawesi Barat) is provided.

Keywords. *Begonia*, new species, Sulawesi.

INTRODUCTION

Numerous species of the mega-diverse genus *Begonia* L. (c.1500 spp.; Hughes, 2008) have been brought to light by recent expeditions to the Indonesian island of Sulawesi, raising the number of known Sulawesi *Begonia* species from 23 in the year 2005 to 42 to date (after considering the synonymy of species in the *Begonia rieckei* Warb. and *B. aptera* Blume complexes; see the checklist in Thomas *et al.*, 2009a, and recent additions to the Sulawesi *Begonia* flora by Girmansyah *et al.*, 2009; Thomas *et al.*, 2009b; this study). This recent high discovery rate of new Sulawesi *Begonia* species reflects the degree of past underexploration of Sulawesi, as illustrated by the island having the lowest density of botanical collections of all the large islands in Indonesia (Cannon *et al.*, 2007).

Nine species of *Begonia* are newly described below. Seven of these were collected on an expedition to South and West Sulawesi in 2009. Descriptions of these species are based on measurements of both herbarium material and living plants in the field.

¹ University of Hong Kong, School of Biological Sciences, Pok Fu Lam Road, Hong Kong. E-mail: dthomas@hku.hk

² Bogor Botanic Gardens, Jl. Ir. H. Juanda No. 13, Bogor 16003, Indonesia. E-mail: wisnu.handoyo.ardi@lipi.go.id

³ Royal Botanic Garden Edinburgh, 20A Inverleith Row, Edinburgh EH3 5LR, Scotland, UK. E-mail: m.hughes@rbge.ac.uk

One species, *Begonia vermeulenii*, is described from herbarium material and from living plants cultivated at Singapore Botanic Garden and the Royal Botanic Garden Edinburgh. The description of another species, *Begonia insueta*, is based solely on herbarium material. Like the vast majority of Sulawesi *Begonia* species all of the newly described species belong to *Begonia* section *Petermannia* (Klotzsch) A.DC. In common with most members of this section the newly described species exhibit two-tepaled male flowers, anthers with unilaterally positioned slits, five-tepaled female flowers (unknown for *Begonia insueta*), two-flowered female inflorescences or solitary female flowers, three-locular ovaries with axile placentation and bilamellate placentae (unknown for *B. insueta*), and fruits with equal or subequal wings (except for the wingless fruits of *B. vermeulenii*, and the unequal wings of the fruits of *B. insueta*).

A distribution map including all newly described species is shown in Fig. 1, and diagnostic characters are illustrated in Figs 2–10. All the specimens cited are included in the *Southeast Asian Begonia Database* (Hughes & Pullan, 2007), which is accessible online (<http://elmer.rbge.org.uk/begonia/>).

SPECIES DESCRIPTIONS

***Begonia comestibilis* D.C.Thomas & Ardi, sp. nov.** Sect. *Petermannia*. Figs 1, 2.

A ceteris speciebus *Begoniae* celebicis combinatione characterum foliorum peltatorum, inflorescentiis masculis valde compressis et alarum fructuum bene evolutarum differt. – Type: Indonesia, Sulawesi, Sulawesi Selatan, Lompobatang Mountains, close to Malino, Katemujotup waterfall, disturbed forest at margin of coffee plantation, 05°16'30.9"S, 119°51'53.7"E, 1030 m, 11 iv 2009, D.C. Thomas & W.H. Ardi 09-62 (holo E; iso BO, L).

Perennial, monoecious herb with erect stems, to c.80 cm tall, glabrous except for a sparse indumentum of microscopic, glandular hairs. *Stems* branched; *internodes* c.4–13 cm long, reddish. *Leaves* alternate, usually excentrically peltate, or sometimes both peltate leaves and leaves with basifixed lamina present; *stipules* caducous, 13–17 × 6–12 mm, elliptic to oblong, with an abaxially prominent midrib that projects up to c.4 mm at the apex; *petioles* 4–18 cm long, reddish; *lamina* 13–17.3 × 7.1–10.5 cm, very asymmetric, ovate to elliptic, leaf margin slightly sinuate close to the petiole (excentrically peltate leaves) or base cordate and lobes not overlapping (basifixed laminas), apex acuminate, margin dentate to serrate to bidentate or biserrate, teeth not bristle-pointed, adaxial surface mid green and abaxial surface pale green, coriaceous, primary veins 5–6, actinodromous, secondary veins craspedodromous. *Inflorescences*: protogynous; *female inflorescences* 2-flowered, usually positioned one node below the male inflorescences, peduncles c.1–1.5 mm long; *male inflorescences* usually distal to the female inflorescences, composed of 1–5 cymose-subumbellate partial inflorescences, each with 1–3 strongly compressed monochasia with up to 7 flowers, peduncles 9–38 mm long. *Male flowers*: *pedicels* 15–31 mm long;

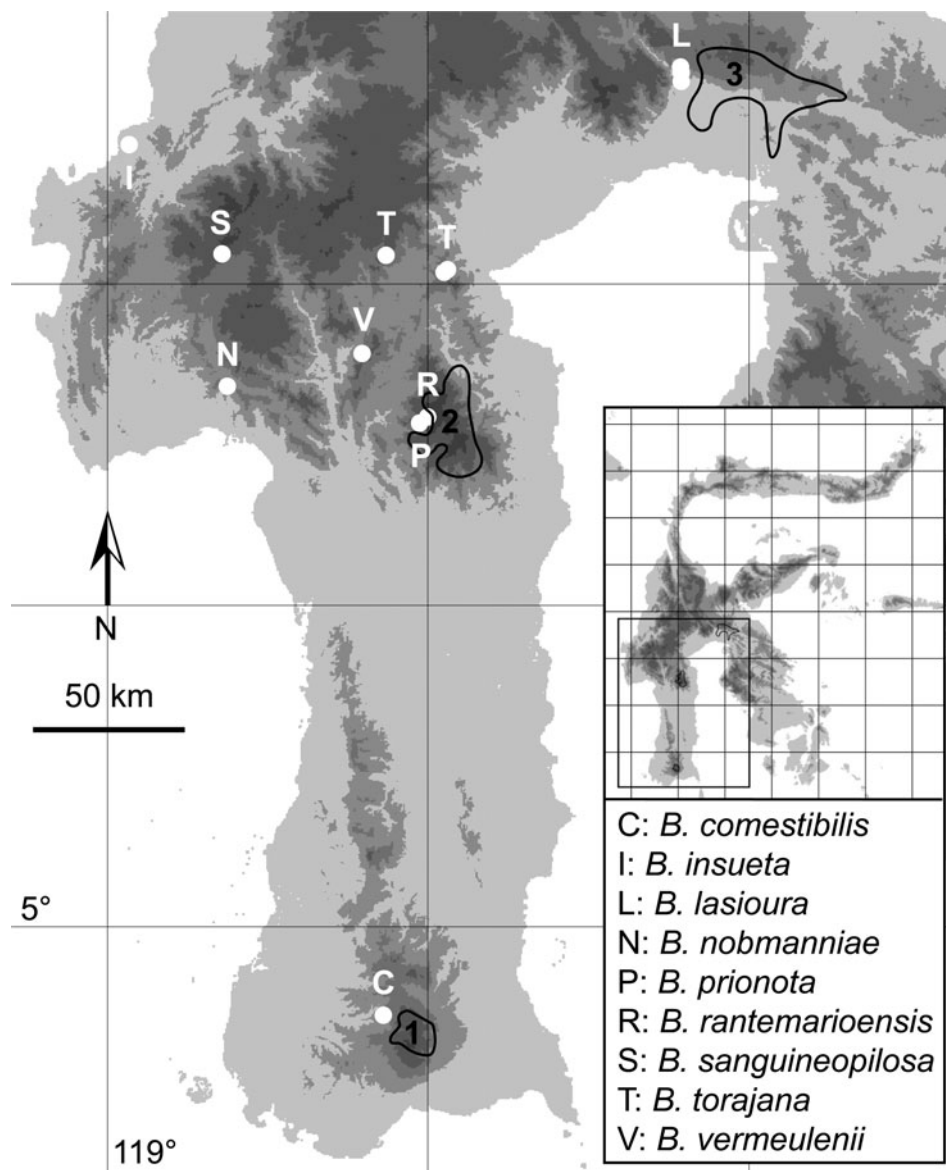


FIG. 1. Distribution map. Collections are indicated by white dots (single dots can indicate multiple collections from the same or nearby localities). The letter directly above or below a white dot indicates the species as shown in the inset. Important protected areas in proximity to the collection sites are indicated by black outlines: 1. Lompobatang Protected Forest (IUCN category VI); 2. Pegunungan Latimojong Protection Forest (IUCN category VI); 3. Pegunungan Feruhumpenai Nature Reserve (IUCN category 1a). Topographical variation is indicated by five shades of grey: 0–500 m (the lightest shade), 500–1000 m, 1000–1500 m, 1500–2000 m, and > 2000 m (the darkest shade).

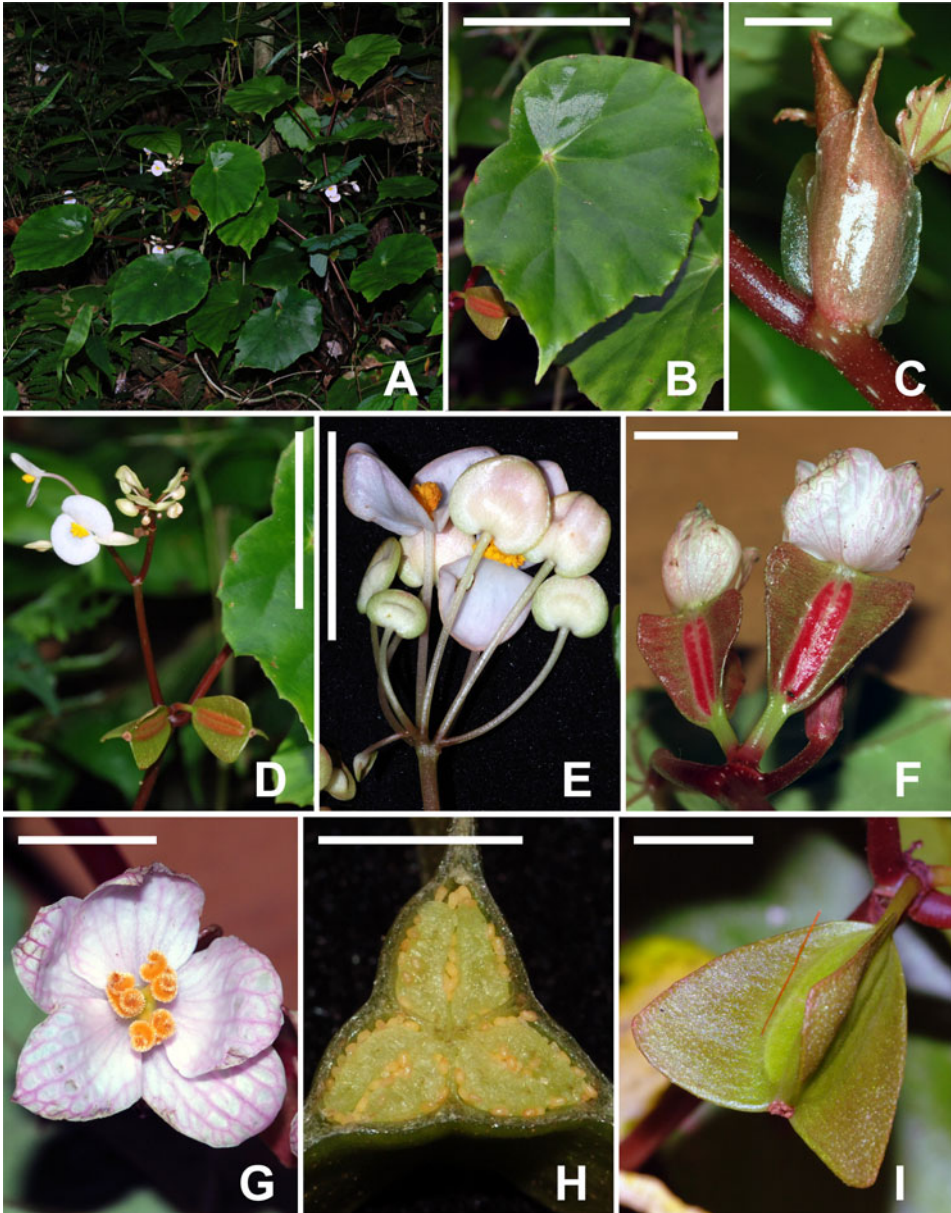


FIG. 2. *Begonia comestibilis* D.C.Thomas & Ardi. A, habit; B, leaf; C, stipule; D, inflorescence; E, male cymose-subumbellate partial inflorescence; F, female inflorescence; G, female flower, front view; H, ovary, cross-section, three-locular with axile, bilamellate placentae; I, fruit. A–I: D.C. Thomas & W.H. Ardi 09-62. Scale bars: B = 9 cm; C = 5 mm; D = 5 cm; E = 3 cm; F = 12 mm; G = 15 mm; H = 3 mm; I = 20 mm.

tepals 2, white, 8–14 × 11–17 mm, broadly ovate to suborbicular, base slightly cordate, apex rounded; *androecium* of c.76–92 stamens, yellow, filaments up to c.2 mm long, slightly fused at the very base, anthers c.0.9–1.5 mm long, obovate to oblong, dehiscing through unilaterally positioned slits that are > 1/2 as long as the anther. *Female flowers*: *pedicels* 6–10 mm long; *tepals* 5, white with pinkish veins, subequal, 14–18 × 8–11 mm, obovate to elliptic; *ovary* ellipsoid, locules 3, placentation axile, placentae bilamellate, wings 3, triangular, subequal, base rounded to cuneate, apex rounded to subtruncate, widest subapically, style basally fused, 3-branched, each stylodium bifurcate in the stigmatic region, stigmatic surface a spirally twisted papillose band, yellow. *Fruiting pedicels* up to 1 cm long. *Fruits* semi-fleshy, ellipsoid, 17–26 × 6–10 mm (excluding the wings), indehiscent?, wing shape as for ovary, 11–16 mm wide at the widest point (at the apex); *seeds* ellipsoidal, c.0.35–0.4 mm long, collar cells c.1/2–2/3 of the length of the seed.

Distribution. Indonesia, Sulawesi, South Sulawesi (Sulawesi Selatan), Lompobatang Mountains, close to Malino (Fig. 1).

Habitat. This is a rainforest floor species, observed on a steep slope at c.1020–1040 m above sea level.

Proposed IUCN conservation category. Vulnerable (VU D2). The Lompobatang massif is densely populated, and the majority of forest below 1700 m is heavily disturbed or has been converted by logging and land clearance for settlements and agriculture. This also holds true for the area surrounding the forest patch in which *Begonia comestibilis* was collected. The known distribution of this species falls outside the Lompobatang Protected Forest (IUCN category VI). Although all available *Begonia* specimens from A, B, BM, BO, CEB, E, K, L, SING and WAG have been consulted, only two collections are known. Hence it must be assumed, at least until more intensive collecting on Sulawesi reveals otherwise, that this species has a very restricted extent of occurrence. *Begonia comestibilis* grows abundantly at the type locality, but because of the restricted distribution the population is likely to be 'prone to the effects of human activities or stochastic events within a very short time period in an uncertain future' (IUCN, 2001). Given the pressures on the forests in this region, and the direct threat to the only known population by human activity (extensive coffee plantations, rice agriculture, human settlements), this species must be considered vulnerable. Close monitoring of the population might indicate an even higher threat category.

Additional specimen examined. SULAWESI. **South Sulawesi:** Malino, 10 x 1931, *A. Rant* 421 (BO).

The specific epithet is derived from *comestibilis* (Latin – edible). The leaves of *Begonia comestibilis*, which is called Indokaciling in the Malay dialect of the local people, are locally used as a vegetable and either eaten raw for their sour and refreshing taste or as an ingredient for a sour sauce used for chicken dishes. *Begonia*

comestibilis belongs to a group of Sulawesi species which show either a fleshy, relatively thick pericarp and reduced wings (*Begonia guttapila*, *B. vermeulenii*, *B. rieckeii*) or a semi-fleshy pericarp, often thick placenta lamellae and well-developed wings (*B. comestibilis*, *B. sanguineopilosa*, *B. torajana*). Numerous fruits and ovaries of *Begonia comestibilis* at various ontogenetic stages were observed in the field in April 2009, and none of the fruits showed any signs of dehiscence. Further observations later in the season are needed to confirm whether these fruits are indehiscent or whether they dehisce in the usual mode with lines of dehiscence along the bases of the wings.

Peltate species are rare in the large *Begonia* section *Petermannia*, and only one peltate-leaved species, *Begonia varipeltata* D.C.Thomas, was previously known from Sulawesi (Thomas & Hughes, 2008). *Begonia comestibilis* differs from *B. varipeltata* by numerous vegetative and generative characters such as the strongly compressed subumbellate male inflorescences, the very shortly pedunculate female inflorescences and the semi-fleshy fruits. It differs from the only other peltate species on Sulawesi, *Begonia vermeulenii*, in having winged fruit and leaves which are more shallowly dentate or serrate. With regard to the generative characters, *Begonia comestibilis* is similar to *B. guttapila*, which also exhibits compressed cymose-subumbellate male inflorescences, very short peduncles of the female inflorescences and fleshy fruits. However, the peltate, slightly succulent and coriaceous leaves and the longer pedicels of the female flowers of *Begonia comestibilis* make it easy to differentiate this species from *B. guttapila*.

***Begonia insueta* D.C.Thomas & Ardi, sp. nov. Sect. *Petermannia*. Figs 1, 3.**

Species distinctissima. A ceteris speciebus celebicis foliis palmatim compositis, pedunculis inflorescentiarum feminearum brevibus, pedicellis florum feminearum longis et alis fructuum inaequalibus differt. – Type: Indonesia, Sulawesi, Sulawesi Barat, Kab. Mamuju, Kec. Kaluku, Kp. Popangatalu, Bukit Tabase, c.100 m, 8 ii 1993, J.J. Afriastini 2085 (holo BO).

Perennial, monoecious herb, with erect stems, to c.100 cm tall, with a moderately dense to dense indumentum of multicellular, simple trichomes up to c.0.6 mm long and a sparse indumentum of microscopic, glandular trichomes on all above-ground vegetative parts. *Stems* branched; *internodes* c.3.9–7.2 cm long. *Leaves* alternate; *stipules* caducous, 6–11 × 2.5–5 mm, ovate, with an abaxially prominent midrib that projects c.2–4 mm at the apex; *petioles* c.4–10 cm long; *lamina* basifixed, palmately compound with 5–7 leaflets, each leaflet 2.9–9.5 × 1.6–2.5 cm, asymmetric, ovate or ellipsoid, base cuneate to concavo-convex, apex acuminate, margin irregularly serrate to biserrate, teeth bristle-pointed, primary veins 5–7, actinodromous, secondary veins craspedodromous. *Inflorescences*: *female inflorescences* 2-flowered, solitary, peduncles c.0.5–1 mm long; *male inflorescences* solitary, partial inflorescences monochasial with short but well-developed axes, each monochasium with c.5–7 flowers. *Male flowers*: *pedicels* c.2–3 mm long; *tepals* 2, pink, 4–5 × 3–4 mm, broadly

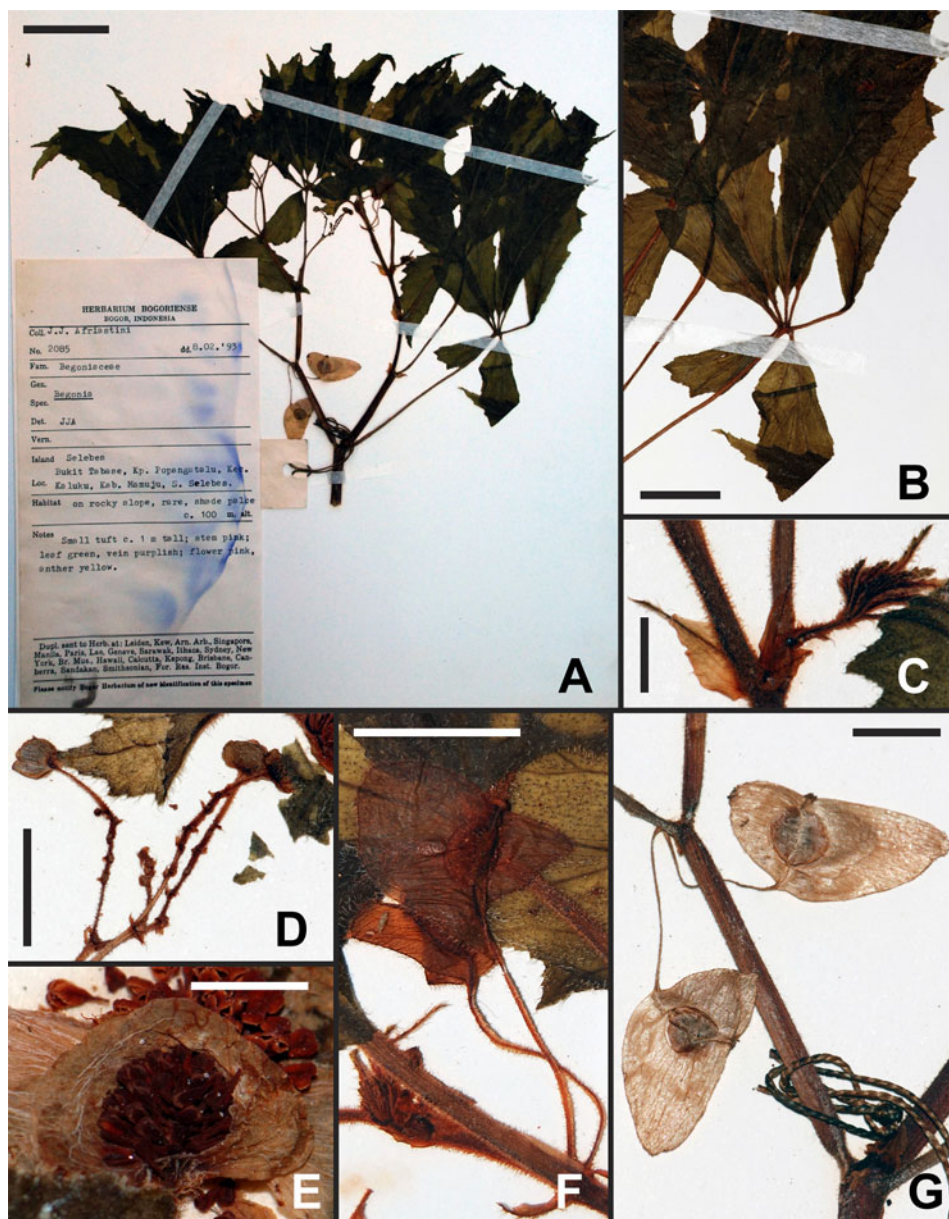


FIG. 3. *Begonia insueta* D.C.Thomas & Ardi. A, holotype; B, leaf; C, stipule and ontogenetically young leaf; D, male partial inflorescences; E, male flower; F, inflorescence; G, infructescence. A–G: J.J. Afriastini 2085. Scale bars: A = 5 cm; B = 2 cm; C = 5 mm; D = 1 cm; E = 2 mm; F, G = 10 mm.

ovate to suborbicular, base cordate, apex rounded, abaxially with a sparse indumentum of multicellular hairs; *androecium* of c.28–42 stamens, yellow, filaments up to c.0.8 mm long, slightly fused at the base, anthers up to c.0.6 mm long, obovate,

dehiscing through unilaterally positioned slits that are $> 1/2$ as long as the anther. *Female flowers*: pedicels 15–19 mm long; tepals unknown; ovary ellipsoid, with a sparse indumentum of microscopic hairs and a sparse indumentum of multicellular hairs, locule number and placentation unknown, wings 3, strongly unequal, triangular, base rounded to cuneate, apex subtruncate to rounded, style unknown. *Fruiting pedicels* 16–19 mm long. *Fruits* subglobose, c.6–7 × 5–6 mm (excluding the wings), sparsely hairy to glabrescent, dehiscent, splitting along the wing attachment, wing shape as for ovary, the largest c.14–16 mm wide at the widest point (subapically), the two smaller c.6–8 mm wide at the widest point (subapically); *seeds* ellipsoidal, c.0.3 mm long, collar cells c.1/2 of the length of the seed.

Distribution. Indonesia, Sulawesi, Sulawesi Barat, Kab. Mamuju, Kec. Kaluku, Kp. Popangatalu, Bukit Tabase (Fig. 1).

Habitat. This species was observed growing on a rocky slope, in full shade, at c.100 m above sea level.

Proposed IUCN conservation category. Data Deficient (DD). The species is only known from one collection. The locality could not be georeferenced with certainty, and the population has not been observed in the field.

The species epithet *insueta* is derived from *insuetus* (Latin – unusual). It refers to the unusual morphological characters exhibited by this species. *Begonia insueta* can be placed in *Begonia* section *Petermannia* based on the two-flowered female inflorescences and the anthers dehiscing through unilaterally positioned slits (Fig. 3E, G). However, it exhibits several characters which are rare in this large and morphologically diverse section including unequally sized fruit wings and palmately compound leaves, which have only been described from three other species in the Malesian region: *Begonia oligandra* Merr. & L.M.Perry, *B. polilloensis* Tebbitt and *Begonia rachmatii* Tebbitt (see key in Tebbitt, 2005b). The Sulawesi *Begonia rachmatii* is morphologically dissimilar to *B. insueta* and can be differentiated by multiple characters including the solitary female flowers, very short pedicels of the female flowers (c.1 mm long), and wings which are subequal in size (see key below). The distinctly unequal wings of the fruits in *Begonia insueta* are highly uncommon in *Begonia* section *Petermannia*. However, strongly unequal fruit wings can also be found in the New Guinean species *Begonia oligandra*, which also exhibits palmately compound leaves. This species has tentatively been assigned to *Begonia* section *Diploclinium* (Lindl.) A.DC. by Doorenbos *et al.* (1998), but the lack of specialised underground organs like rhizomes or tubers indicates that its affinities are with New Guinean species in *Begonia* section *Petermannia*. However, the well-developed stalks and the serrate margins of the leaflets of *Begonia insueta* allow easy differentiation of this species from *B. oligandra*, which exhibits pinnatifid to bipinnatifid leaflets with extremely short stalks. The leaf morphology of the Philippine endemic *Begonia polilloensis* is similar to *B. insueta*, but the leaflets of *B. polilloensis* are not distinctly stalked, the female flowers are solitary, and the fruit wings are subequal in size.

***Begonia lasioura* D.C.Thomas & Ardi, sp. nov.** Sect. *Petermannia*. Figs 1, 4.

Begoniae didymae D.C.Thomas & Ardi in indumento partium vegetativarum et generativarum bene evoluto, stipulis cum appendicula apicali longa pilosaque et fructus forma generali superficie similis sed a qua foliis distincte majoribus (8–21.5 × 6–12 cm nec 4.2–6.7 × 2.6–4.7 cm) et floribus in inflorescentiis masculis magis numerosis (usque ad c.15 nec 2[–3]) differt. – Type: Indonesia, Sulawesi, Sulawesi Selatan, Mankutana–Pendolo divide, 02°21'29.1"S, 120°47'42.3"E, 600 m, 3 v 2009, D.C. Thomas & W.H. Ardi 09-110 (holo E; iso BO, L).

Perennial, monoecious herb, stems erect, to c.60 cm tall, with a moderately dense to dense indumentum of multicellular, simple trichomes up to c.1.8 mm long and a sparse indumentum of microscopic, glandular trichomes on all above-ground vegetative parts. *Stems* branched; *internodes* c.2–17.5 cm long, reddish. *Leaves* alternate; *stipules* persistent, 16–26 × 6–10 mm, elliptic to oblong, with an abaxially prominent midrib projecting up to 12 mm at the apex; *petioles* 4–18 cm long, reddish; *lamina* 8–21.5 × 6–12 cm, very asymmetric, ovate to elliptic, base cordate and lobes not or sometimes slightly overlapping, apex long acuminate, margin serrate, teeth long bristle-pointed, adaxial surface dark green and abaxial surface pale green, primary veins 4–5, actinodromous, secondary veins craspedodromous. *Inflorescences*: protogynous; *female inflorescences* (1–)2-flowered, positioned one node below the male inflorescences or solitary, peduncles c.1–7 mm long; *male inflorescences* composed of 2–4 cymose-subumbellate partial inflorescences, each with (1–)2 compressed monochasia with 2–6 flowers, peduncles 13–26 mm long. *Male flowers*: *pedicels* 10–16 mm long; *tepals* 2, greenish when young, whitish or whitish tinged with pink at maturity, 7–11 × 8–11 mm, broadly ovate to suborbicular, base slightly cordate, apex rounded, abaxially with a sparse to moderately dense indumentum of multicellular, reddish hairs and microscopic glandular hairs; *androecium* of c.37–47 stamens, yellow, filaments up to c.1 mm long, slightly fused at the very base, anthers up to c.1 mm long, obovate, dehiscing through unilaterally positioned slits that are c.1/2 as long as the anthers. *Female flowers*: *pedicels* 1–2 mm long; *tepals* 5, whitish tinged with pink, unequal, the smaller 10–11 × 4–5 mm, ovate to elliptic, the larger 10–12 × 7–9 mm, ovate to elliptic, margin and abaxial surface with a sparse indumentum of microscopic glandular hairs and multicellular, reddish hairs; *ovary* ellipsoid, with a sparse indumentum of microscopic hairs and a moderately dense indumentum of reddish multicellular hairs, locules 3, placentation axile, placentae bilamellate, wings 3, triangular, subequal, base rounded, apex truncate, style basally fused, 3-branched, each stylodium bifurcate in the stigmatic region, stigmatic surface a spirally twisted papillose band, orange. *Fruiting pedicels* 1–4 mm long. *Fruits* ellipsoid, 12–14 × 4–6 mm (excluding the wings), moderately densely hairy to glabrescent, dehiscent, splitting along the wing attachment, wing shape as for ovary, 6–8 mm wide at the widest point (at the apex); *seeds* ellipsoidal, c.0.3 mm long, collar cells c.1/2–2/3 of the length of the seed.

Distribution. Indonesia, Sulawesi, Sulawesi Selatan, Mankutana–Pendolo divide (Fig. 1).

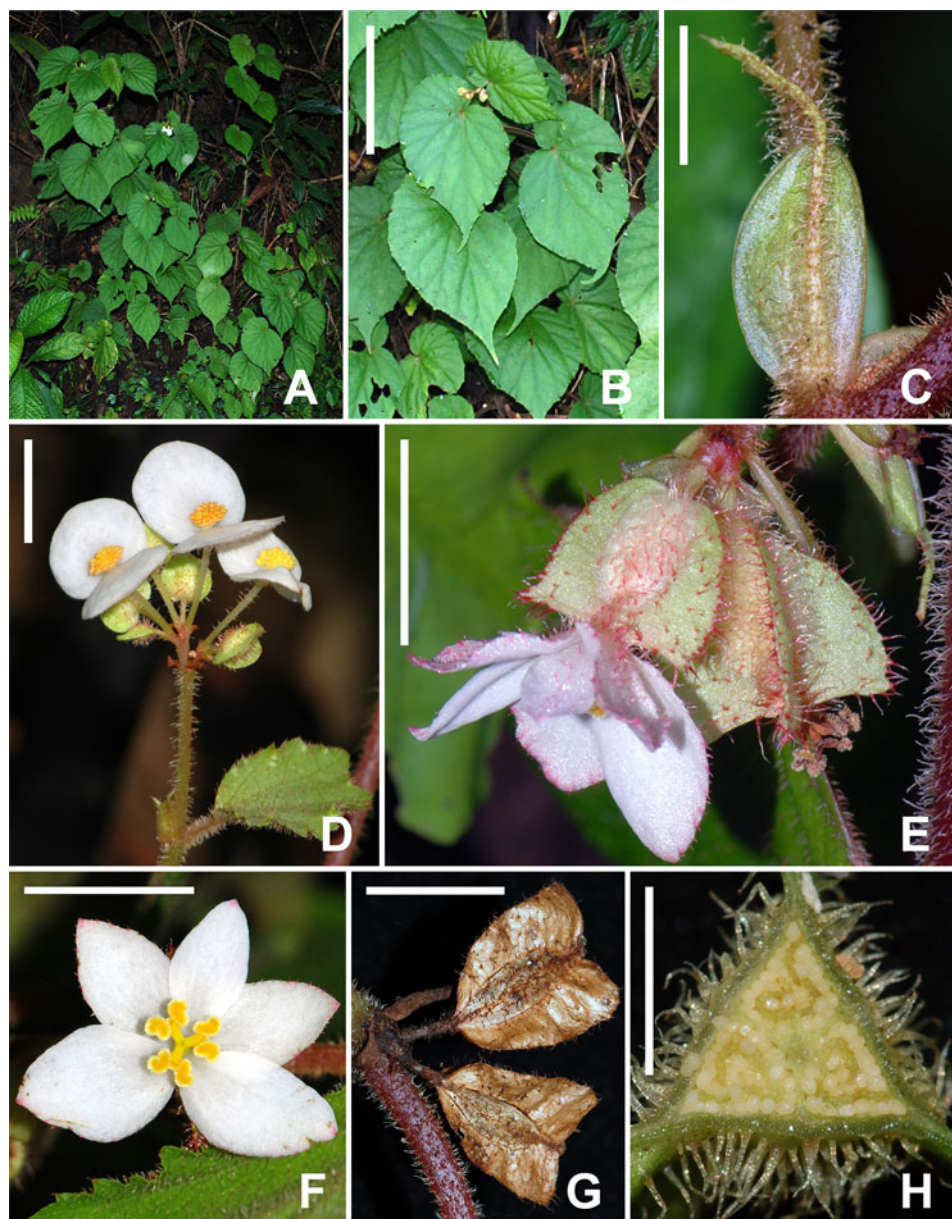


FIG. 4. *Begonia lasioura* D.C.Thomas & Ardi. A, habit; B, habit; C, stipule; D, male cymose-subumbellate inflorescence; E, female inflorescence; F, female flower, front view; G, infructescence; H, ovary, cross-section, three-locular with axile, bilamellate placentae. A–H: D.C. Thomas & W.H. Ardi 09-110. Scale bars: B = 10 cm; C = 8 mm; D–F = 10 mm; G = 12 mm; H = 3 mm.

Habitat. This species grows lithophytically in full shade on rock walls in primary rainforest between c.500 and 1000 m above sea level.

Proposed IUCN conservation category. Least Concern (LC). Several subpopulations of *Begonia lasioura* were observed along the road connecting Mankutana and Pendolo, where the species is locally common. All of the collection sites and observed subpopulations lie in close proximity, but outside the Pegunungan Feruhumpenai Nature Reserve (IUCN category 1a). However, further exploration might reveal that the distribution of this species extends into this protected area. Given the occurrence of extensive stretches of high quality primary forest on the Pendolo–Mankutana divide, an IUCN conservation category of LC seems to be indicated.

Additional specimens examined. SULAWESI. **South Sulawesi:** Mankutane, Mankutane–Pendolo divide, 4 ii 2004, *J.J. Vermeulen* 2483 (SING, WAG); *ibid.*, 3 v 2009, *D.C. Thomas & W.H. Ardi* 09-114 (BO, E, L); *ibid.*, 3 v 2009, *D.C. Thomas & W.H. Ardi* 09-116 (BO, E, L).

The specific epithet is a compound of *lasio* (Greek – shaggy) and *oura* (Greek – tail). The specific epithet refers to the apical appendices of the stipules of this species, as well as the long appendiculate apices of the leaves (Fig. 4B, C). Both short apical stipule appendages formed by protruding midribs and apiculate apices of the leaves are common in many species in *Begonia* section *Petermannia*. However, the apical stipule appendages of *Begonia lasioura* are notable as they can comprise up to almost half of the length of the stipules and are distinctly hairy, and the drip-tips of the hairy leaves are more distinct than in most Sulawesi species.

***Begonia nobmanniae* D.C.Thomas & Ardi, sp. nov.** Sect. *Petermannia*. **Figs 1, 5.**

Begoniae rachmatii Tebbitt architectura inflorescentiae cum pedunculis inflorescentiae partialis femineae brevibus et ramificatione complici reminiscientia est. A hac specie foliis indivisis et fructibus longioribus (14–17 mm longis nec 8–12 mm) differt. – Type: Indonesia, Sulawesi, Sulawesi Barat, Road Polewali to Mamasa, 03°18'51.9"S, 119°22'24.5"E, 879 m, 7 v 2009, *D.C. Thomas & W.H. Ardi* 09-123 (holo E; iso BO, L).

Perennial, monoecious herb, with erect stems, to c.25 cm tall, glabrous except for a sparse indumentum of microscopic, glandular trichomes, or sometimes exhibiting a sparse indumentum of multicellular, simple trichomes up to c.0.5 mm long on all above-ground vegetative parts. *Stems* branched; *internodes* c.2–7 cm long, reddish to brownish. *Leaves* alternate; *stipules* caducous, 8–14 × 4–7 mm, ovate or oblong, with an abaxially prominent midrib that projects shortly at the apex; *petioles* c.2–4 cm long, greenish or reddish; *lamina* 5.5–11 × 3–5.5 cm, very asymmetric, ovate, base cordate and lobes not or slightly overlapping, apex acuminate, margin biserrate, teeth not bristle-pointed, adaxial surface dark green and variegated with small white spots, abaxial surface reddish, primary veins 4–5, actinodromous, secondary veins craspedodromous. *Inflorescences:* protogynous; *female inflorescences* 2-flowered or female flowers solitary, basal to male inflorescences, peduncles c.1 mm long; *male*

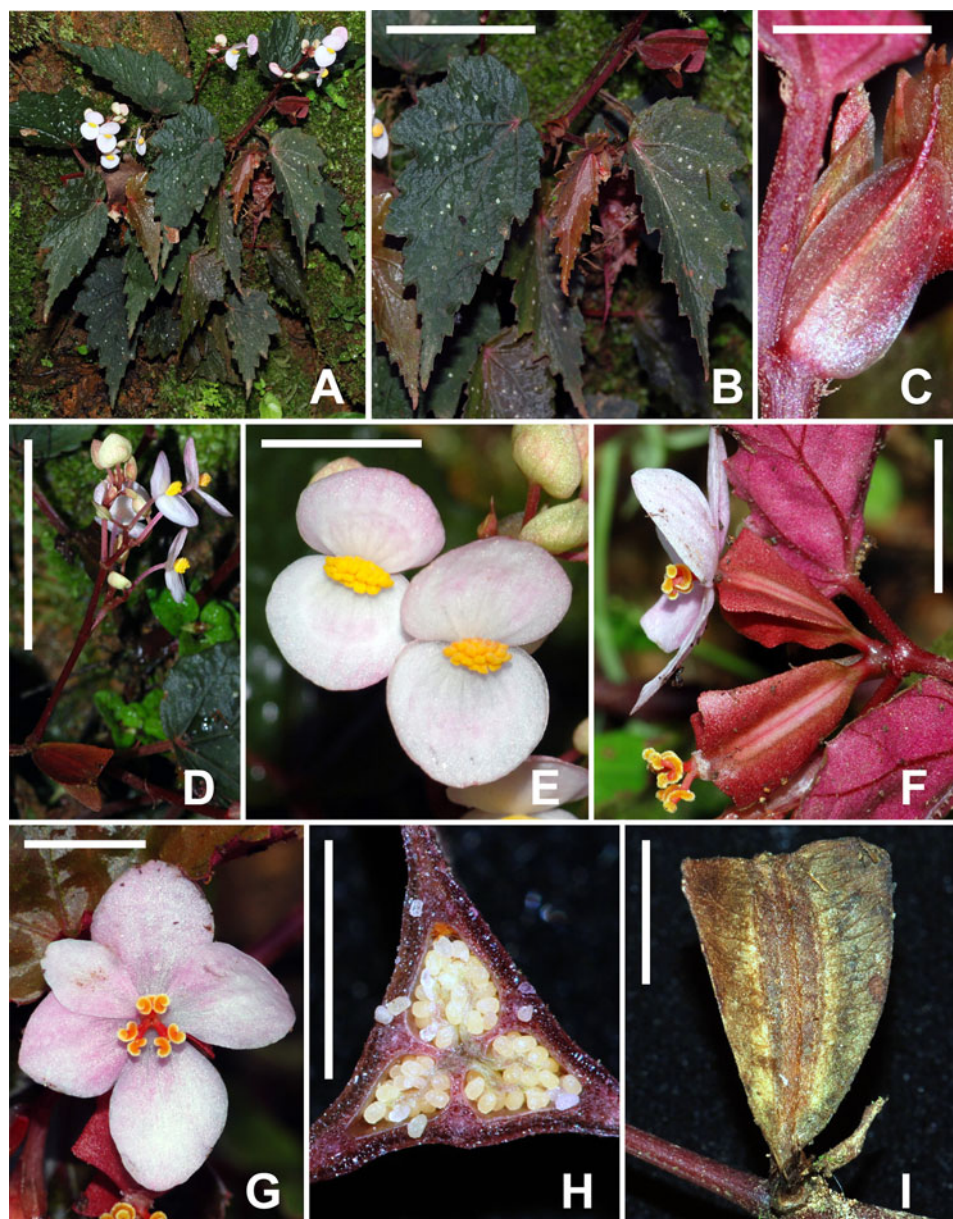


FIG. 5. *Begonia nobmanniae* D.C.Thomas & Ardi. A, habit; B, leaves; C, stipule; D, inflorescence; E, male flowers; F, female inflorescence; G, female flower, front view; H, ovary, cross-section, three-locular with axile, bilamellate placentae; I, fruit. A–I: D.C. Thomas & W.H. Ardi 09-123. Scale bars: B = 4 cm; C = 6 mm; D = 5 cm; E = 12 mm; F, G = 10 mm; H = 3 mm; I = 8 mm.

inflorescences distal to female inflorescences, superinflorescence usually multiple times branched, the axes separating 2–10 partial inflorescences, each consisting of

1–2 monochasia, each monochasium with 1–4 flowers. *Male flowers*: *pedicels* c.8–21 mm long; *tepals* 2, white or pink, 7–14 × 9–14 mm, broadly ovate to suborbicular, base cordate, apex rounded; *androecium* of c.30–42 stamens, yellow, filaments up to c.1.5 mm long, slightly fused at the base, anthers up to c.1.1 mm long, obovate, dehiscing through unilaterally positioned slits that are > 1/2 as long as the anther. *Female flowers*: *pedicels* c.1 mm long; *tepals* 5, pinkish, subequal to unequal, 9–13 × 5–12 mm, elliptic to obovate; *ovary* ellipsoid, locules 3, placentation axile, placentae bilamellate, wings 3, narrowly triangular, subequal, base rounded to cuneate, apex rounded or truncate, widest at the apex or subapically, style basally shortly fused, 3-branched, each styloidium bifurcate in the stigmatic region, stigmatic surface a spirally twisted papillose band, yellow. *Fruiting pedicels* up to c.2 mm long. *Fruits* ellipsoid, c.14–17 × 3.5–4 mm (excluding the wings), dehiscent, splitting along the wing attachment, wing shape as for ovary, up to 8 mm wide at the widest point; *seeds* ellipsoidal, c.0.3 mm long, collar cells c.1/2 of the length of the seed.

Distribution. Indonesia, Sulawesi, Sulawesi Barat, Road Polewali to Mamasa, only known from the type locality (Fig. 1).

Habitat. This species was observed growing lithophytically on an almost vertical rock wall between c.850 and 900 m above sea level.

Proposed IUCN conservation category. Vulnerable (VU D2). Only a single population has been observed in the field. All available *Begonia* specimens from A, B, BM, BO, CEB, E, K, L, SING and WAG have been consulted. Hence it must be assumed, at least until more intensive collecting on Sulawesi reveals otherwise, that this species has a very restricted extent of occurrence, which does not fall into any legally protected areas. Moreover, the only known population is adjacent to the Road Polewali–Mamasa, and clearly has been influenced by road construction work. Therefore, it is likely it is ‘prone to the effects of human activities or stochastic events within a very short time period in an uncertain future’ (IUCN, 2001).

The species is named in honour of the German plant geneticist and *Begonia* enthusiast Barbara Nobmann, who generously supported an expedition to Sulawesi in 2009.

The inflorescence architecture of *Begonia nobmanniae*, which is characterised by sessile, sometimes solitary, female flowers and fruits and the complex branching of the male inflorescence, is similar to the conditions found in *B. rachmatii*. However, *Begonia nobmanniae* is not just a simple-leaved variant of *B. rachmatii*, but shows a less delicate growth habit and also differs from it by the larger fruits and tepals, and the more strongly compressed monochasial male partial inflorescences.

***Begonia prionota* D.C.Thomas & Ardi, sp. nov.** Sect. *Petermannia*. Figs 1, 6.

A ceteris speciebus celebicis tepalis florum femineorum irregulariter serratis, alis fructuum serrulatis et superinflorescentia mascula multoties ramosa cum internodiis bene evolutis et inflorescentiis partialibus monochasialibus distinguitur.

– Type: Indonesia, Sulawesi, Sulawesi Selatan, Gunung Rantemario, 03°24′59.0″S,

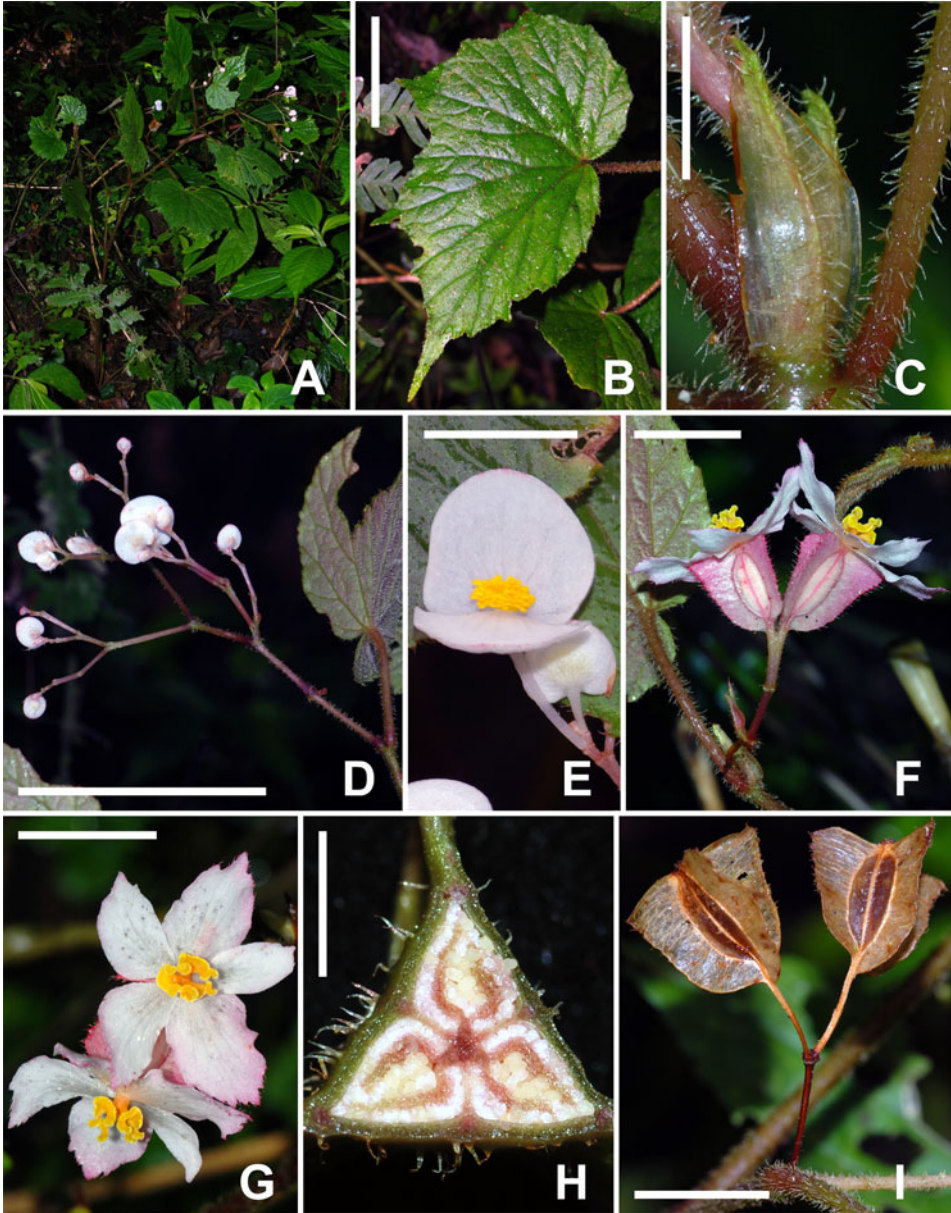


FIG. 6. *Begonia prionota* D.C.Thomas & Ardi. A, habit; B, leaf; C, stipule; D, male inflorescence; E, male flower; F, female inflorescence; G, female flowers; H, ovary, cross-section, three-locular with axile, bilamellate placentae; I, infructescence. A–I: *D.C. Thomas & W.H. Ardi* 09-97. Scale bars: B = 4 cm; C = 6 mm; D = 7 cm; E = 16 mm; F = 14 mm; G, I = 15 mm; H = 3 mm.

119°59'34.7"E, 2175 m, 27 iv 2009, D.C. Thomas & W.H. Ardi 09-97 (holo E; iso BO, L).

Perennial, monoecious herb with erect stems, to c.80 cm tall, with a moderately dense indumentum of multicellular, simple trichomes up to c.1.2 mm long and a sparse indumentum of microscopic, glandular trichomes on all above-ground vegetative parts. *Stems* branched; *internodes* c.3–11 cm long, brownish-reddish. *Leaves* alternate; *stipules* caducous, 9–15 × 3–9 mm, ovate to oblong, with an abaxially prominent midrib slightly projecting at the apex; *petioles* 3–10 cm long, reddish or brownish; *lamina* 8–15 × 4–10 cm, very asymmetric, ovate to elliptic, base cordate and lobes not overlapping, apex acuminate, margin biserrate to shallowly lobed (up to c.25% of the lamina width), irregularly scalloped, teeth long bristle-pointed, adaxial surface dark green and abaxial surface pale green, primary veins 5–6, actinodromous, secondary veins craspedodromous. *Inflorescences*: protogynous; *female inflorescences* 2-flowered, positioned one node below the male inflorescences or solitary, peduncles c.12–20 mm long; *male inflorescences* distal to the female inflorescences or solitary, superinflorescence usually multiple times branched, with well-developed axes separating 2–12(–16) monochasial partial inflorescences, each with c.3–8 flowers. *Male flowers*: *pedicels* 8–13 mm long; *tepals* 2, white or pinkish, 10–17 × 14–16 mm, broadly ovate, base slightly cordate, apex rounded, abaxially with a sparse indumentum of larger multicellular hairs and microscopic glandular hairs; *androecium* of c.47–59 stamens, yellow, filaments up to c.2.5 mm long, slightly fused at the very base, anthers up to c.1 mm long, obovate, dehiscing through unilaterally positioned slits that are > 1/2 as long as the anther. *Female flowers*: *pedicels* 8–11 mm long; *tepals* 5, white with a pink tinge, unequal, smallest 8–14 × 5–7 mm, larger 12–16 × 8–13 mm, elliptic, the margin irregularly serrate from around the middle to the apex, abaxially with a sparse indumentum of microscopic glandular hairs and larger multicellular hairs; *ovary* ellipsoid, with a sparse indumentum of microscopic hairs and some larger multicellular hairs, locules 3, placentation axile, placentae bilamellate, wings 3, triangular, subequal, base rounded, apex truncate, the margin irregularly denticulate to serrulate, teeth extended into multicellular hairs up to c.1 mm long, style basally fused, 3-branched, each stylodium bifurcate in the stigmatic region, stigmatic surface a spirally twisted papillose band, orange. *Fruiting pedicels* up to 13 mm long. *Fruits* ellipsoid, 14–16 × 6–7 mm (excluding the wings), sparsely to moderately densely hairy, dehiscent, splitting along the wing attachment, wing shape as for ovary, 9–11 mm wide at the widest point (at the apex); *seeds* ellipsoidal, c.0.3 mm long, collar cells c.1/2–2/3 of the length of the seed.

Distribution. Indonesia, Sulawesi, Sulawesi Selatan, Latimojong Mountains, Gunung Rantemario (Fig. 1).

Habitat. This species grows in full shade on steep slopes or lithophytically on rock walls in primary rainforest between c.1300 and 2200 m above sea level.

Proposed IUCN conservation category. Vulnerable (VU D2). The distribution of *Begonia prionota* lies just outside the western border of the Pegunungan Latimojong Protection Forest (IUCN category VI). The collections of this species are from a primary forest pocket along a small stream, where *Begonia prionota* grows abundantly, but the immediately surrounding area shows moderate to strong anthropogenic disturbance (logging, agriculture, settlements). No other populations of this species could be found in close proximity to the type locality or along a track leading up to the summit of Gunung Rantemario. Moreover, all available *Begonia* specimens from A, B, BM, BO, CEB, E, K, L, SING and WAG have been consulted. Hence it must be assumed, at least until more intensive collecting on Sulawesi reveals otherwise, that this species has a very restricted range in the Latimojong Mountains.

Additional specimens examined. SULAWESI. **South Sulawesi:** Kab. Enrekang, Kec. Baraka, Eran Batu, 1 ix 1994, *D. Girmansyah* 50 (BO); *ibid.*, 1 ix 1994, *D. Girmansyah* 51 (BO); *ibid.*, 1 ix 1994, *D. Girmansyah* 53 (BO); Gunung Rantemario, 27 iv 2009, *D.C. Thomas & W.H. Ardi* 09-98 (BO, E, L).

The specific epithet is derived from *prionotos* (Greek – jagged) and refers to both the serrulate wings of the ovaries and fruits and the serrulate tepals of the female flowers (Fig. 6F, G).

Begonia prionota is a very distinct species. Diagnostic characters include the serrulate wings of the fruits, the irregularly serrate tepals of the female flowers, and the unusual architecture of the male superinflorescences, which are characterised by multiple branchings, well-developed internodes and monochasia as partial inflorescences.

***Begonia rantemarioensis* D.C.Thomas & Ardi, sp. nov.** Sect. *Petermannia*. **Figs 1, 7.**

Begoniae sanguineopilosae D.C.Thomas & Ardi similis sed a qua foliis majoribus (11–15.7 × 4.5–7.7 cm nec 5.5–12 × 2–5 cm), marginibus foliorum profunde duplicoserratis usque vadose lobatis et indumento in ovariis tepalisque rubello carenti differt. – Type: Indonesia, Sulawesi, Sulawesi Selatan, Gunung Rantemario, primary rainforest on steep slope, 03°24'32.3"S, 120°00'24.9"E, 1978 m, 24 iv 2009, *D.C. Thomas & W.H. Ardi* 09-82 (holo E; iso BO, L).

Perennial, dioecious? herb, with erect stems, to c.60 cm tall, glabrous except for a sparse indumentum of microscopic, glandular hairs. *Stems* branched; *internodes* c.3–16 cm long, brownish-reddish. *Leaves* alternate; usually with basifixed laminas or sometimes some leaves strongly excentrically peltate; *stipules* caducous, 11–17 × 7–10 mm, elliptic to ovate, with an abaxially prominent midrib that projects up to c.4 mm at the apex; *petioles* 3–9 cm long, brownish-reddish; *lamina* 11–15.7 × 4.5–7.7 cm, very asymmetric, ovate to elliptic, leaf margin slightly sinuate close to the petiole (strongly excentrically peltate leaves) or base cordate and lobes not overlapping (basifixed laminas), apex acuminate, margin biserrate to shallowly lobed (up to c.25% of the lamina width), irregularly scalloped, teeth not bristle-pointed,

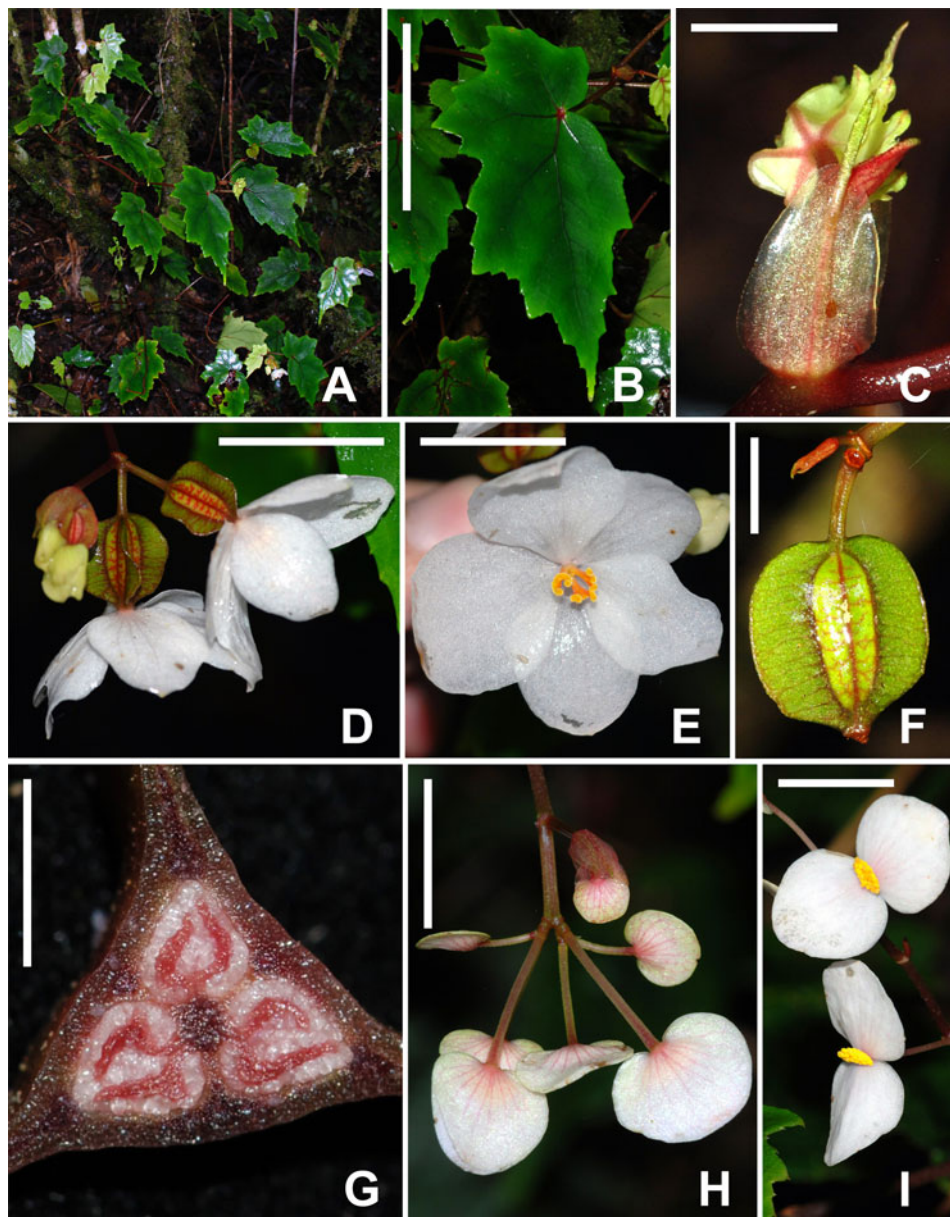


FIG. 7. *Begonia rantemarioensis* D.C.Thomas & Ardi. A, habit; B, leaf; C, stipule; D, female inflorescence; E, female flower, front view; F, fruit; G, ovary, cross-section, three-locular with axile, bilamellate placentae; H, cymose-subumbellate male inflorescence; I, male flowers. A–G: D.C. Thomas & W.H. Ardi 09-78; H, I: D.C. Thomas & W.H. Ardi 09-82. Scale bars: B = 6 cm; C = 8 mm; D, E, I = 20 mm; F, H = 16 mm; G = 3 mm.

adaxial surface dark green and abaxial surface pale green, coriaceous, primary veins 4–5, actinodromous, secondary veins craspedodromous. *Inflorescences*: *female inflorescences* 2-flowered, with 1–2 partial inflorescences at subsequent nodes, peduncles c.1 mm long; *male inflorescences* composed of 2–7 cymose-subumbellate partial inflorescences, each with usually 2 compressed monochasia with 1–3 flowers, peduncles 9–14 mm long. *Male flowers*: *pedicels* 18–32 mm long; *tepals* 2, white with pale pinkish veins to pink, 14–20 × 16–20 mm, broadly ovate to suborbicular, base cordate, apex rounded; *androecium* of c.48–57 stamens, yellow, filaments up to c.2.5 mm long, slightly fused at the base, anthers c.1–1.5 mm long, obovate to oblong, dehiscing through unilaterally positioned slits that are > 1/2 as long as the anther. *Female flowers*: *pedicels* 6–8 mm long; *tepals* 5, white, subequal, 21–26 × 15–20 mm, elliptic to suborbicular; *ovary* ellipsoid, locules 3, placentation axile, placentae bilamellate, wings 3, triangular or crescent-shaped, subequal, base rounded, apex rounded or truncate, widest at the apex or the middle, style basally shortly fused, 3-branched, each styloidium bifurcate in the stigmatic region, stigmatic surface a spirally twisted papillose band, yellow. *Fruiting pedicels* up to c.8 mm long. *Fruits* slightly fleshy, ellipsoid, 13–16 × 7–8 mm (excluding the wings), indehiscent?, wing shape as for ovary, 7–8 mm wide at the widest point (in the middle part or at the apex of the ovary); *seeds* ellipsoidal, c.0.3–0.4 mm long, collar cells c.1/2–2/3 of the length of the seed.

Distribution. Indonesia, Sulawesi, Sulawesi Selatan, Latimojong Mountains, Gunung Rantemario (Fig. 1).

Habitat. This is a rainforest floor species, growing on steep slopes between c.1500 and 2000 m above sea level.

Proposed IUCN conservation category. Least Concern (LC). The distribution of *Begonia rantemarioensis* lies just outside the western border of the Pegunungan Latimojong Protection Forest (IUCN category VI). Although *Begonia rantemarioensis* is relatively rare in the area, several subpopulations were observed in habitats located in primary rainforest not yet encroached by human habitation, agriculture or commercial logging activities. Therefore, a ‘Least Concern’ status seems to be indicated.

Additional specimens examined. SULAWESI. **South Sulawesi**: Subdivision Enrekan, between Angin Angin and Pintealon Forest, 15 vi 1937, *P.J. Eyma* 478 (L, U); Latimojong Mountains, Gunung Rantemario, 1985, *A.J. Whitten* s.n. (L); *ibid.*, 5 iii 2000, *G. Argent et al.* 233 (E); *ibid.*, 28 i 2009, *M. Ardiyani et al.* 164 (BO, E, SING); *ibid.*, 23 iv 2009, *D.C. Thomas & W.H. Ardi* 09-78 (BO, E, L); *ibid.*, 27 iv 2009, *D.C. Thomas & W.H. Ardi* 09-94 (BO, E, L); *ibid.*, 27 iv 2009, *D.C. Thomas & W.H. Ardi* 09-96 (BO, E, L).

The specific epithet refers to the collection locality of the type material, Gunung Rantemario (Latin, *-ensis* – originating from).

Dioecy is a rare sexual system in the predominantly monoecious genus *Begonia*, and in Asian *Begonia* it has only been reported from a few species placed in *Begonia*

section *Sphenanthera* (Hassk.) Warb. (Tebbitt, 1997; Tebbit *et al.*, 2006; Gu *et al.*, 2007), one Sulawesi species in *Begonia* section *Petermannia* (*B. mekonggensis* Girm. & Wiriad.; Girmansyah *et al.*, 2009), and the Himalayan *B. dioica* Buch.-Ham. ex D. Don, which is currently placed in the polyphyletic *Begonia* section *Diploclinium*. The determination of dioecy in *Begonia* can be problematic, as many species show well-developed dichogamy. This can easily result in erroneous descriptions of dioecy in the genus (Badcock, 1998). However, several observations indicate that *Begonia rantemarioensis* belongs to a group of closely related Sulawesi endemics which exhibit real dioecy. Firstly, the suggestions of dioecy are based on field observations. Several populations of *Begonia rantemarioensis* were observed in the field and several individuals, often growing closely together, showed various ontogenetic stages of only female or only male flowers, respectively. Secondly, phylogenies based on chloroplast DNA data indicate that *Begonia guttapila* and another undescribed species (D.C. Thomas & W.H. Ardi 08-84 [E]) are closely related to *B. rantemarioensis* (Thomas, 2010). Material of *Begonia guttapila* and the closely related undescribed species has been cultivated at Bali Botanic Garden for several years, and different individuals consistently develop only male or only female flowers, respectively (Hartutiningsih, pers. comm.). *Begonia rantemarioensis* is in cultivation at Bali Botanic Garden and further observations will show whether dioecy can be confirmed in this and closely related species. The putative dioecy, the succulent, coriaceous leaves and the semi-fleshy and maybe indehiscent fruits indicate a close relationship to *Begonia sanguineopilosa* and *B. torajana*, which are described below. *Begonia imperfecta* Irmsch., *B. sarasinorum* Irmsch. and *B. sphenocarpa* Irmsch., which have been described from Central and South Sulawesi, are only known from the unisexual type material, and may belong to this group as well. However, further collections and field observations of these poorly known species are needed to confirm this.

***Begonia sanguineopilosa* D.C. Thomas & Ardi, sp. nov.** Sect. *Petermannia*. Figs 1, 8.

Begoniae celebicae Irmsch. similis a qua pedicellis florum masculorum longioribus (18–32 mm longis nec c.15 mm), tepalis florum masculorum multo longioribus (18–32 mm longis nec c.9 mm) et tepalis florum femineorum multo longioribus (15–32 mm longis nec c.11–12 mm) differt. – Type: Indonesia, Sulawesi, Sulawesi Barat, Gunung Mambulinin, 02°53'42.5"S, 119°21'37.6"E, 1856 m, 11 v 2009, D.C. Thomas & W.H. Ardi 09-129 (holo E; iso BO, L).

Perennial, dioecious? herb, with erect stems, to c.40 cm tall, with a sparse indumentum of microscopic, glandular trichomes and multicellular, simple trichomes up to c.1.2 mm long on all above-ground vegetative parts. *Stems* branched; *internodes* c.2–10.5 cm long, reddish to brownish. *Leaves* alternate; *stipules* caducous, 8–15 × 3–8 mm, ovate, elliptic or oblong, with an abaxially prominent midrib that projects shortly at the apex; *petioles* 3–6 cm long, reddish; *lamina* 5.5–12 × 2–5 cm, basifixed, very asymmetric, ovate, elliptic or oblong, base cordate and lobes not overlapping, apex acuminate, margin biserrate to slightly lobed (up to c.20% of

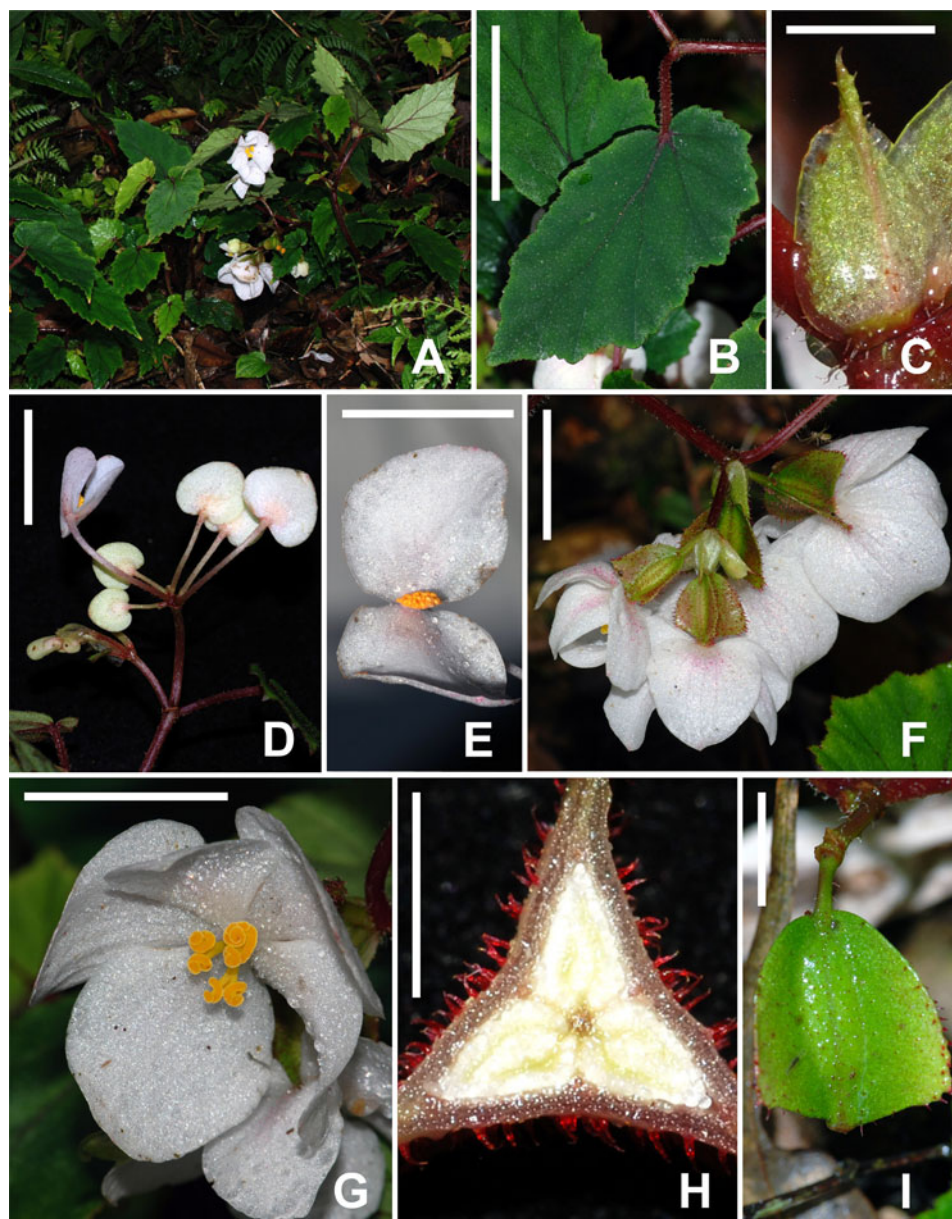


FIG. 8. *Begonia sanguineopilosa* D.C.Thomas & Ardi. A, habit; B, leaf; C, stipule; D, male cymose-subumbellate partial inflorescence; E, male flower, front view; F, female inflorescence; G, female flower, front view; H, ovary, cross-section, three-locular with axile, bilamellate placentae; I, fruit. A–C, F–I: *D.C. Thomas & W.H. Ardi* 09-129; D, E: *D.C. Thomas & W.H. Ardi* 09-128. Scale bars: B = 4 cm; C = 5 mm; D = 22 mm; E = 18 mm; F = 3 cm; G = 25 mm; H = 3 mm; I = 10 mm.

the lamina width), scalloped, teeth not or shortly bristle-pointed, adaxial surface dark green and abaxial surface pale green, primary veins 2–4, subpinnate, secondary veins craspedodromous. *Inflorescences*: *female inflorescences* 2-flowered, with 1–2 partial inflorescences at subsequent nodes, peduncles c.1 mm long; *male inflorescences* composed of 1–3 cymose-subumbellate partial inflorescences, each with 1–3 compressed monochasia with 1–3 flowers, peduncles 5–23 mm long. *Male flowers*: *pedicels* c.18–32 mm long; *tepals* 2, white or whitish tinged with pink, 13–19 × 14–19 mm, broadly ovate to suborbicular, base cordate, apex rounded, abaxially with a sparse indumentum of multicellular, reddish hairs and microscopic glandular hairs; *androecium* of c.32–48 stamens, yellow, filaments up to c.2 mm long, slightly fused at the base, anthers c.1–1.2 mm long, obovate, dehiscing through unilaterally positioned slits that are > 1/2 as long as the anther. *Female flowers*: *pedicels* 4–13 mm long; *tepals* 5, white or white tinged with pink, subequal, 15–32 × 9–29 mm, broadly ovate, elliptic or suborbicular, abaxially with a sparse indumentum of multicellular, reddish hairs and microscopic glandular hairs; *ovary* ellipsoid, moderately densely hairy, locules 3, placentation axile, placentae bilamellate, wings 3, triangular, subequal, base rounded, apex rounded or truncate, 2–9 mm at the widest point (at the apex or in the upper third of the ovary), style basally shortly fused, 3-branched, each styloidium bifurcate in the stigmatic region, stigmatic surface a spirally twisted papillose band, yellow. *Fruiting pedicels* up to c.13 mm long. *Fruits* semi-fleshy, ellipsoid, c.18 × 6 mm (excluding the wings), moderately hairy to glabrescent, indehiscent?, wing shape as for ovary, up to 10 mm wide at the widest point; *seeds* ellipsoidal, c.0.3 mm long, collar cells c.1/2–2/3 of the length of the seed.

Distribution. Indonesia, Sulawesi, Sulawesi Barat, Mamasa, Gunung Mambulinin (Fig. 1).

Habitat. This is a rainforest floor species observed on steep slopes between c.1800 and 2100 m above sea level.

Proposed IUCN conservation category. Vulnerable (VU D2). Large areas of Mamasa valley have been deforested to make way for settlements and the cultivation of rice and other crops. Coffee plantations and logged areas reach up to almost 2000 m above sea level on the southwestern flank of Gunung Mambulinin. These completely converted areas border the locality of *Begonia sanguineopilosa*, which is in an area which has no legally protected status. All available *Begonia* specimens from A, B, BM, BO, CEB, E, K, L, SING and WAG have been consulted, and hence it must be assumed that *Begonia sanguineopilosa* has a very restricted range. However, further exploration of the largely unexplored and extensive rainforests of the Quarles Mountain Range are needed to confirm whether *Begonia sanguineopilosa* is a rare local endemic or shows a wider distribution. We adopt a cautionary approach here, as the existing data indicate that *Begonia sanguineopilosa* is ‘prone to the effects of human activities or stochastic events within a very short time period in an uncertain future’ (IUCN, 2001).

Additional specimens examined. SULAWESI. **West Sulawesi:** Mamasa, Gunung Mambulinin, 11 v 2009, D.C. Thomas & W.H. Ardi 09-125 (BO, E, L); *ibid.*, 11 v 2009, D.C. Thomas & W.H. Ardi 09-127 (BO, E, L); *ibid.*, 11 v 2009, D.C. Thomas & W.H. Ardi 09-128 (BO, E, L).

The specific epithet is a compound of *sanguineus* (Latin – blood-red) and *pilosus* (Latin – hairy). It refers to the red indumentum of the ovary and the abaxial surfaces of the tepals.

Begonia sanguineopilosa belongs to a group of closely related species which are characterised by putative dioecy, fleshy or semi-fleshy fruits, and succulent, leathery leaves (see notes under *Begonia rantemarioensis*). Within this group *Begonia sanguineopilosa* is distinct because of the relatively narrow leaves with a subpinnate venation, the large tepals of the female flowers, as well as the reddish indumentum on the ovary and the abaxial tepal surfaces (see the identification key below).

***Begonia torajana* D.C.Thomas & Ardi, sp. nov.** Sect. *Petermannia*. **Figs 1, 9.**

Begoniae imperfectae Irmsch. similis a qua staminibus multo magis numerosis (c.52–66 nec c.30) et tepalis florum masculorum multo majoribus (11–21 × 14–19 mm nec c.7 × 9 mm) differt. – Type: Indonesia, Sulawesi, Sulawesi Selatan, Gunung Sesean, 02°54′08.9″S, 119°52′40.9″E, 1819 m, 1 v 2009, D.C. Thomas & W.H. Ardi 09-106 (holo E; iso BO, L).

Perennial, dioecious? herb, with erect stems, to c.150 cm tall, glabrous except for a sparse indumentum of microscopic, glandular hairs. *Stems* branched; *internodes* c.4–21.5 cm long, reddish. *Leaves* alternate; *stipules* caducous, 10–17 × 4–9 mm, ovate to oblong, with an abaxially prominent midrib that projects shortly at the apex; *petioles* 5.5–20 cm long, reddish; *lamina* 9.5–19.8 × 4.5–12 cm, basifixed, very asymmetric, ovate to elliptic, base cordate, lobes not or sometimes slightly overlapping, apex acuminate, margin biserrate, irregularly scalloped, teeth not bristle-pointed, adaxial surface dark green and abaxial surface pale green, coriaceous, primary veins 4–5, actinodromous, secondary veins craspedodromous. *Inflorescences:* *female inflorescences* 2-flowered, with 1–2 partial inflorescences at subsequent nodes, peduncles c.2–17 mm long; *male inflorescences* composed of 1–6 cymose-subumbellate partial inflorescences, each with 3–5 compressed monochasia with 3–5 flowers, peduncles 9–15 mm long. *Male flowers:* *pedicels* c.18–20 mm long; *tepals* 2, whitish with pale pink veins or pinkish, 11–21 × 14–19 mm, broadly ovate to suborbicular, base cordate, apex rounded; *androecium* of c.52–66 stamens, yellow, filaments up to c.2 mm long, slightly fused at the base, anthers c.1–1.2 mm long, obovate, dehiscing through unilaterally positioned slits that are > 1/2 as long as the anther. *Female flowers:* *pedicels* 6–8 mm long; *tepals* 5, white, subequal, 18–27 × 12–15 mm, elliptic, sometimes irregularly serrate at the apex; *ovary* ellipsoid, locules 3, placentation axile, placentae bilamellate, wings 3, triangular to crescent-shaped, subequal, base rounded, apex rounded or truncate, widest subapically, style basally shortly fused, 3-branched, each stylodium bifurcate in the stigmatic region, stigmatic surface a spirally twisted papillose band, yellow. *Fruiting pedicels* up to c.6–9 mm

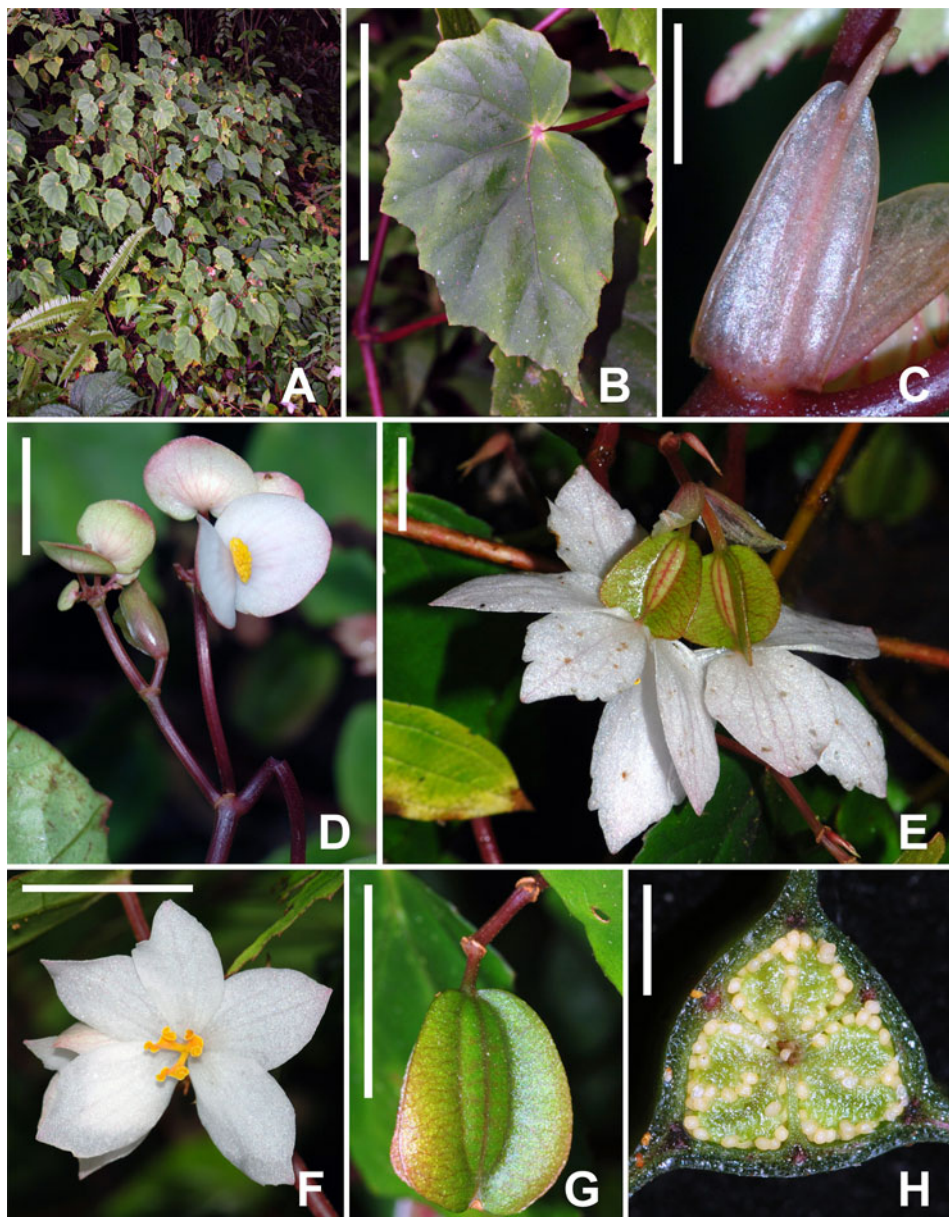


FIG. 9. *Begonia torajana* D.C.Thomas & Ardi. A, habit; B, leaf; C, stipule; D, male inflorescence; E, female inflorescence; F, female flower, front view; G, fruit; H, fruit, cross-section, three-locular with axile, bilamellate placentae. A–C, E–H: D.C. Thomas & W.H. Ardi 09-106; D: D.C. Thomas & W.H. Ardi 09-105. Scale bars: B = 10 cm; C = 5 mm; D = 16 mm; E = 10 mm; F = 24 mm; G = 18 mm; H = 3 mm.

long. *Fruits* slightly fleshy, ellipsoid, 15–20 × 5–7 mm (excluding the wings), indehiscent?, wing shape as for ovary, 8–10 mm wide at the widest point (in the middle part or at the apex of the ovary); *seeds* ellipsoidal, c.0.3–0.4 mm long, collar cells c.1/2–2/3 of the length of the seed.

Distribution. Indonesia, Sulawesi, Sulawesi Selatan, Tanah Toraja, Gunung Sesean and the area between Palopo and Rantepao (Fig. 1).

Habitat. This is a rainforest floor species, growing on steep slopes between c.800 and 2000 m above sea level. Although this species grows best in full shade and moist conditions, it has a certain tolerance towards higher light intensities and can be found in disturbed habitats at roadsides dominated by Gleicheniaceae species.

Proposed IUCN conservation category. Least Concern (LC). All of the observed subpopulations were in areas which have no legal protection. The subpopulations on Gunung Sesean, where *Begonia torajana* is locally common, were restricted to pockets of primary forest surrounded by strongly disturbed habitats including large areas which were fire-cleared for cattle grazing. The subpopulations along the road from Rantepao to Palopo may ultimately fare better since they are in areas of extensive rainforest protected by mountainous terrain. The inaccessibility of the primary rainforests of the Rantepao–Palopo divide offers some natural protection.

Additional specimens examined. SULAWESI. **South Sulawesi:** Tana Toraja, Gunung Sesean, 24 viii 1993, J.J. Wieringa 1889 (L, WAG); *ibid.*, 1 v 2009, D.C. Thomas & W.H. Ardi 09-104 (BO, E, L); *ibid.*, 1 v 2009, D.C. Thomas & W.H. Ardi 09-105 (BO, E, L); Tanah Toraja, Rantepao–Palopo divide, 2 ii 2004, J.J. Vermeulen 2411 (SING); *ibid.*, 30 iv 2009, D.C. Thomas & W.H. Ardi 09-102 (BO, E, L).

The specific epithet refers to the ethnic group of the Toraja and their traditional territory (Tanah Toraja in South Sulawesi), which covers the known distribution of *Begonia torajana*.

Begonia torajana belongs to a group of closely related species which are characterised by putative dioecy, fleshy or semi-fleshy fruits, and succulent, leathery leaves (see notes under *Begonia rantemarioensis*). With regards to the leaf morphology and male inflorescence architecture it is similar to *Begonia imperfecta*, which is only known from the male type material. However, the tepals of the male flowers are much larger in *Begonia torajana* (11–21 × 14–19 mm) than in *B. imperfecta* (c.7 × 9 mm), and the androecium in *B. torajana* consists of c.52–66 stamens, while only c.30 stamens have been reported in *Begonia imperfecta* (Irmscher, 1914).

***Begonia vermeulenii* D.C.Thomas, sp. nov.** Sect. *Petermannia*. **Figs 1, 10.**

Ab aliis speciebus sectionis *Petermanniae* combinatione characterum foliorum peltatorum et fructibus longis (usque ad 48 mm), fusiformibus, exalatis, carnisos differt. – Type: Indonesia, Sulawesi, Sulawesi Selatan, Buntu area, Kampong

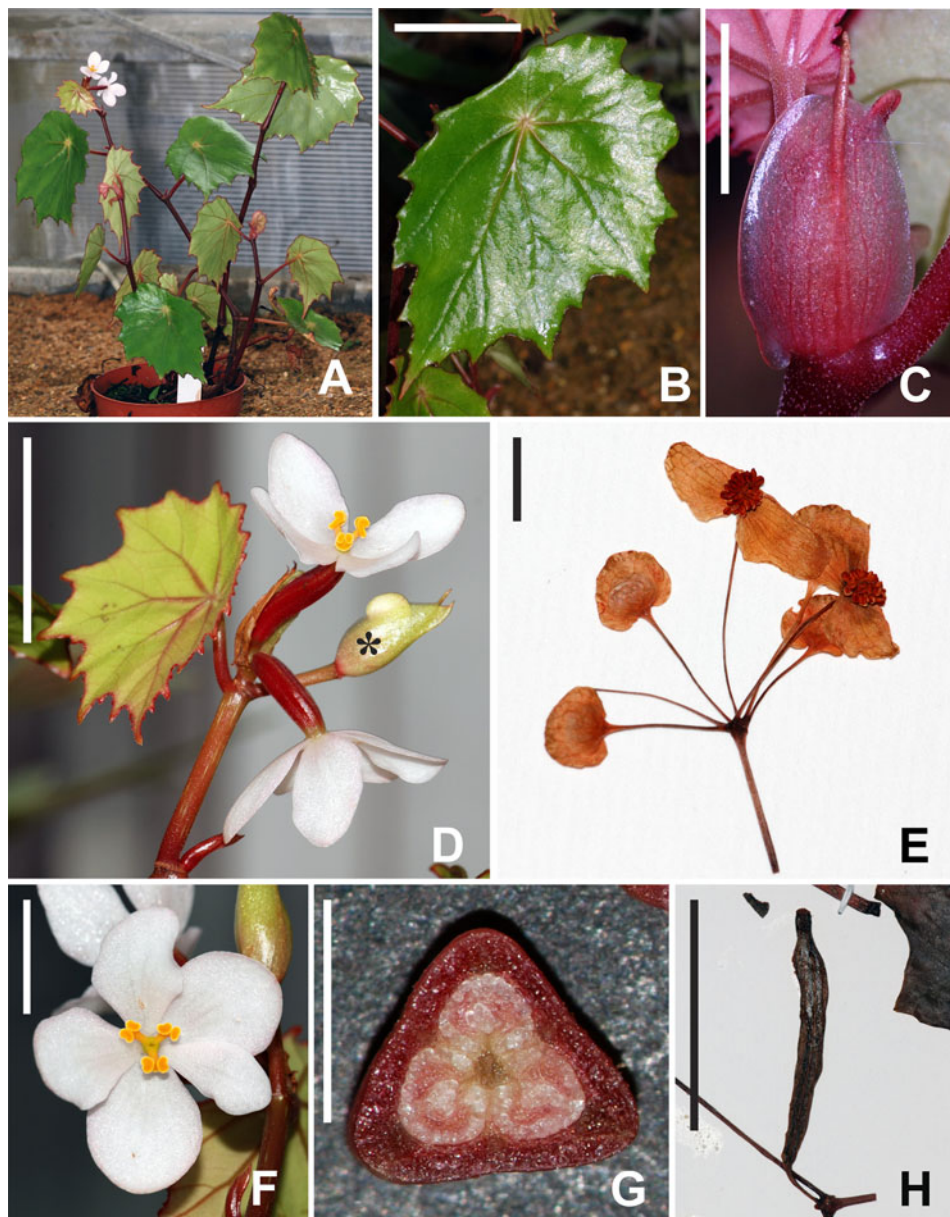


FIG. 10. *Begonia vermeulenii* D.C.Thomas. A, habit; B, leaf; C, stipule; D, inflorescence, the asterisk indicates a developing male inflorescence; E, male cymose-subumbellate partial inflorescence; F, female flower, front view; G, ovary, cross-section, three-locular with axile, bilamellate placentae; H, fruit. A–D, F–G: *D.C. Thomas* 08-167; E, H: *J.J. Vermeulen* 2301. Scale bars: B = 4 cm; C = 8 mm; D = 3 cm; E, F = 9 mm; G = 3 mm; H = 5 cm.

Lokkok, 03°13'S, 119°48'E, 1500–1700 m, 15 ix 2003, J.J. Vermeulen 2301 (holo WAG; iso SING).

Perennial, monoecious herb, with erect stems, to c.100 cm tall, glabrous except for a sparse indumentum of microscopic, glandular hairs. *Stems* branched; *internodes* c.2–12 cm long, reddish. *Leaves* alternate; peltate; *stipules* caducous, 8–21 × 5–9 mm, ovate to oblong, with an abaxially prominent midrib that projects shortly at the apex; *petioles* 3.5–9.5 cm long, reddish or greenish; *lamina* 8–15.5 × 5.5–9.5 cm, very asymmetric, ovate to elliptic, apex acuminate, margin biserrate, irregularly scalloped, teeth not bristle-pointed, adaxial surface dark green and abaxial surface pale green, coriaceous, primary veins 5–6, actinodromous, secondary veins craspedodromous. *Inflorescences*: protogynous; *female inflorescences* 2-flowered, usually positioned one node below the male inflorescences, peduncles c.1 mm long; *male inflorescences* composed of 1–3 cymose-subumbellate partial inflorescences, each with 2 compressed monochasia with up to 5 flowers, peduncles up to 16 mm long. *Male flowers*: *pedicels* c.10–19 mm long; *tepals* 2, white, 5–8 × 8–10 mm, broadly ovate to suborbicular, base cordate, apex rounded; *androecium* of c.35–44 stamens, yellow, filaments up to c.1.4 mm long, slightly fused at the base, anthers c.1.2 mm long, obovate, dehiscing through unilaterally positioned slits that are c.1/2 as long as the anther. *Female flowers*: *pedicels* c.5–10 mm long; *tepals* 5, white or white tinged with pink, subequal to unequal, 15–17 × 6–11 mm, obovate to elliptic; *ovary* ellipsoid, wingless, locules 3, placentation axile, placentae bilamellate, style basally shortly fused, 3-branched, each stylodium bifurcate in the stigmatic region, stigmatic surface a spirally twisted papillose band, yellow. *Fruiting pedicels* up to c.1 cm long. *Fruits* fleshy, ellipsoid, c.44–48 × 5–6 mm, indehiscent; *seeds* ellipsoidal, c.0.3 mm long, collar cells c.1/2–2/3 of the length of the seed.

Distribution. Indonesia, Sulawesi, Sulawesi Selatan, Buntu area, Kampong Lokkok (Fig. 1).

Habitat. This is a rainforest floor species, growing on limestone slopes between c.1500 and 1700 m above sea level.

Proposed IUCN conservation category. Vulnerable (VU D2). The known distribution of *Begonia vermeulenii* falls outside any legally protected area. Furthermore, extensive areas close to the collection site are at best highly degraded or entirely lacking in native vegetation since they have been converted into rice fields and human settlements. Remnant primary forests in the area are often restricted to inaccessible limestone slopes. Although all available *Begonia* specimens from A, B, BM, BO, CEB, E, K, L, SING and WAG have been consulted, only one collection is known. Other subpopulations could not be detected in an exploration of the area close to the collection site. Hence it must be assumed, at least until more intensive collecting on Sulawesi reveals otherwise, that this species has a very restricted extent of occurrence. Therefore, it is likely that the population is 'prone to the effects of human activities or stochastic events within a very short time period in an uncertain future' (IUCN, 2001).

This species is named in honour of the Dutch botanist and orchid specialist Jaap J. Vermeulen. *Begonia vermeulenii* is one of the most distinct Sulawesi *Begonia* species because of the conspicuously long, fleshy, wingless fruits and the succulent, peltate leaves. The fleshy fruits, the subumbellate male inflorescences and the succulent leaves indicate a close relationship with other South Sulawesi species including *Begonia comestibilis*, *B. guttapila*, *B. rantemarioensis*, *B. sanguineopilosa* and *B. torajana*.

Identification key to Begonia in South and West Sulawesi

- 1a. Leaves palmately compound _____ 2
- 1b. Leaves simple, sometimes lobed _____ 3
- 2a. Small, delicate plants, to c.40 cm in height; glabrous except for microscopic glandular hairs; female flowers solitary; pedicels of the fruits very short (c.1 mm); wings of the fruits subequal _____ *B. rachmatii*
- 2b. Robust plants up to c.100 cm in height; moderately to densely hairy on all above-ground vegetative parts; female inflorescence 2-flowered; pedicel of the fruits long (16–19 mm); wings of the fruits unequal with one wing much larger than the other two _____ *B. insueta*
- 3a. Leaves peltate (although a few leaves, especially the subtending leaves of the inflorescences, sometimes with basifixed laminas) _____ 4
- 3b. Leaf laminas basifixed _____ 5
- 4a. Ovaries and fruits wingless, fruits > 4 cm long; tepals of male flowers up to c.10 mm broad, androecium of fewer than 50 stamens _____ *B. vermeulenii*
- 4b. Ovaries and fruits with well-developed wings, fruits < 3 cm long; tepals of male flowers 11–17 mm broad, androecium of more than 60 stamens _____ *B. comestibilis*
- 5a. Female inflorescences 1- or 2-flowered and clearly spatially separated from the male inflorescences or inflorescence parts; fruits dehiscent or fleshy, with well-developed wings _____ 6
- 5b. Female and male flowers occurring together in cymose inflorescences; fruits fleshy with strongly reduced wings _____ 24
- 6a. Plants with swollen underground organs consisting of one to several tuberous units up to 3.1 cm long and 1.1 cm thick; filaments of the stamens fused into a short filament column; acaulescent or with short aerial stem < 30 cm in height _____ *B. siccaudata* J.Door.
- 6b. Plants without specialised swollen underground organs; filaments free or only fused at the very base; plants usually > 30 cm in height, if smaller then still with well-developed aerial stems _____ 7

-
- 7a. Petioles with a sparse to dense indumentum of multicellular, simple trichomes and interspersed multicellular, branched trichomes _____
 _____ *B. ozotothrix* D.C.Thomas¹ 8
- 7b. Petioles glabrous or hairy, but never with branched trichomes _____ 8
- 8a. Leaf margin distantly dentate and unevenly repand _____ *B. sarasinorum*
- 8b. Leaf margin serrate to biserrate or dentate to bidentate, sometimes shallowly lobed (up to c.25% of the lamina width) _____ 9
- 9a. Male inflorescences dichasial (sometimes with monochasial branching in the apical part), inflorescence internodes short, but well developed; peduncles of female inflorescences > 2.5 cm long _____ 10
- 9b. Male inflorescences monochasial, internodes often strongly compressed, but sometimes axes shortly developed; peduncles of female inflorescences < 2.5 cm long _____ 11
- 10a. Leaf margin biserrate to shallowly lobed; male flowers with (2–3)4 tepals usually > 20 mm wide _____ *B. grandipetala* Irmsch.
- 10b. Leaf margin finely serrate or dentate to bidentate or biserrate; male flowers with 2 tepals up to 18 mm wide _____ *B. bonthainensis* Hemsl.
- 11a. Male cymose inflorescences with 2(–3) flowers; leaf laminas < 7 cm long _____
 _____ *B. didyma* D.C.Thomas & Ardi
- 11b. Male cymose inflorescences with more than 3 flowers; larger leaves > 7 cm long _____
 _____ 12
- 12a. Peduncle of compressed, cymose male inflorescences < 5 mm long _____ 13
- 12b. Peduncles of cymose male inflorescences > 5 mm long _____ 14
- 13a. Petioles 2.5–8 cm long; tepals of male flowers 10–12 × 10–12 mm _____
 _____ *B. aff. mekonggensis* Girm. & Wiriad.²
- 13b. Petioles 7–15 cm long; tepals of male flowers 11–27 × 18–28 mm _____ *B. sp.* I³

¹ *Begonia ozotothrix* has been described from Central Sulawesi (Thomas *et al.*, 2009a) and has not been reported from South Sulawesi before. However, this species has recently been collected in the Karaenta Reserve close to the Bantimurung National Park in South Sulawesi (D.C. Thomas & W.H. Ardi 09-76 [BO, E, L]; see also S. Soenarko 304 [BO], C.G.G.J. van Steenis 10443 [BO], W. Meijer 10965 [BO, L]). Collections from this southern subpopulation exhibit the species' characteristic branched hairs and differ from the collections made in Central Sulawesi only in the denser indumentum and slightly less compressed male inflorescences.

² *Begonia mekonggensis* is a local endemic from Southeast Sulawesi (Sulawesi Tenggara) (Girmansyah *et al.*, 2009). Vegetatively and generatively similar material has recently been collected in the rainforests of the Mangkutana–Pendolo divide close to the Feruhumpenai Nature Reserve (D.C. Thomas & W.H. Ardi 09-108, 09-111 [BO, E]).

³ This species will be described in a forthcoming edition of *Reinwardtia* (Harry Wiriadinata, pers. comm.). *Begonia* sp. I is distinct by the very large greenish-white or white tepals of the male flowers (up to c.27 × 28 mm) and the subsessile cymose-subumbellate male inflorescences; see P. Harwood 126 (BKL), W.S. Hoover *et al.* 889 (BO), M. Tebbitt s.n. (E), D.C. Thomas & W.H. Ardi 08-82 (E), and the illustration in Tebbitt (2005a: 100).

-
- 14a. Ovaries and fruits with multicellular trichomes each with a conspicuously broad, bulbous base narrowing into a fine extended tip _____ *B. guttapila*
- 14b. Ovaries and fruits glabrous or when with multicellular trichomes, then trichomes without conspicuously broad bulbous base _____ 15
- 15a. Vegetative organs glabrous except for a sparse indumentum of microscopic glandular hairs _____ 16
- 15b. Above-ground vegetative organs with a sparse to dense indumentum of macroscopically visible multicellular simple trichomes _____ 19
- 16a. Number of stamens < 40 _____ *B. imperfecta*
- 16b. Number of stamens > 40 _____ 17
- 17a. Small erect herbs < 30 cm in height; tepals of female flowers < 14 mm long _____ *B. nobmanniae*
- 17b. Tall erect herbs or soft-wooded shrubs > 40 cm in height; tepals of female flowers 18–27 mm long _____ 18
- 18a. Compressed subumbellate male partial inflorescences with > 8 flowers, composed of 3–5 compressed monochasia, each with 3–5 flowers; tepals of the female flowers often irregularly serrate at the apex; leaf lamina margin biserrate _____ *B. torajana*
- 18b. Compressed subumbellate male partial inflorescences with < 8 flowers, composed of 2 compressed monochasia, each with 1–3 flowers; tepals of the female flowers with entire margins; leaf lamina margin biserrate to shallowly lobed (up to c.25% of the lamina width) _____ *B. rantemarioensis*
- 19a. Margins of the tepals of the female flowers irregularly serrate at apices _____ *B. prionota*
- 19b. Margins of the tepals of the female flowers entire _____ 20
- 20a. Tepals of female flowers 15–32 mm long; leaf lamina < 5 cm in width _____ *B. sanguineopilosa*
- 20b. Tepals of female flowers < 15 mm long, or when slightly longer (*B. sphenocarpa*) then leaves > 5 cm in width _____ 21
- 21a. Petioles glabrous or very sparsely hairy with macroscopically visible multicellular hairs; teeth of the leaf lamina not extended into fine bristles _____ *B. nobmanniae*
- 21b. Petioles densely hairy with macroscopically visible multicellular hairs; teeth of the leaf lamina extended into fine bristles _____ 22
- 22a. Ovary wings not hairy at the margins; leaves 5–8 × 3–4.5 cm _____ *B. celebica* Irmsch.
- 22b. Ovary wings hairy at the margins; leaves 7–21.5 × 5–12.5 cm _____ 23
- 23a. Leaf margin serrate; fruits < 15 mm long; tepals of female flowers 10–12 mm long _____ *B. lasioura*

- 23b. Leaf margin biserrate; fruits > 18 mm long; tepals of female flowers 12–17 mm long _____ *B. sphenocarpa*
- 24a. Leaves oblong-lanceolate _____ *B. aptera*
- 24b. Leaves broadly ovate _____ 25
- 25a. Plant glabrous _____ *B. rieckei* complex
- 25b. Plant hairy _____ *B. robusta* Blume complex

ACKNOWLEDGEMENTS

We are grateful to Dr Eko Baroto Walujo (LIPI, Cibinong Science Centre, BO), Mr Mustaid Siregar and Miss Hartutiningsih (LIPI, Bogor Botanic Gardens) for their support of our expeditions to Sulawesi; to the horticulture staff at Bali Botanic Garden, Bogor Botanic Gardens, the Royal Botanic Garden Edinburgh and the Royal Botanic Gardens Glasgow for their expert care of the *Begonia* collections; to the curators of A, B, BM, BO, CEB, E, K, L, SING and WAG for allowing us access to herbarium material and living collections; to Dr Mark Tebbitt for sending plant material from Brooklyn Botanic Gardens; and to Dr Robert Mill for the Latin diagnoses. This research would not have been possible without the support of the Indonesian Ministry of Research and Technology (RISTEK) and Direktorat Jenderal Perlindungan Hutan dan Konservasi (DITJET PHKA). The funding of the first author's PhD project by the M. L. MacIntyre Trust, and the support of two expeditions in 2008 and 2009 to Sulawesi by the Royal Horticultural Society, the Stanley Smith (UK) Horticultural Trust and the Systematics Association, is gratefully acknowledged.

REFERENCES

- BADCOCK, Z. (1998). *A phylogenetic investigation of Begonia L. section Knesebeckia (Klotzsch) A.DC.* PhD thesis, University of Glasgow.
- CANNON, C. H., SUMMERS, M., HARTING, J. R. & KESSLER, P. J. A. (2007). Developing conservation priorities based on forest type, condition, and threats in a poorly known ecoregion: Sulawesi, Indonesia. *Biotropica* 39(6): 747–759.
- DOORENBOS, J. M., SOSEF, S. M. & DE WILDE, J. J. F. E. (1998). *The sections of Begonia including descriptions, keys and species lists.* Studies in Begoniaceae VI. Wageningen Agricultural University Papers 98(2). Wageningen: Wageningen Agricultural University.
- GIRMANSYAH, D., WIRIADINATA, H., THOMAS, D. C. & HOOVER, W. S. (2009). Two new species and one new subspecies of *Begonia* (Begoniaceae) from Southeast Sulawesi, Sulawesi, Indonesia. *Reinwardtia* 13(1): 69–74.
- GU, C. Z., PENG, C. I. & TURLAND, N. J. (2007). Begoniaceae. In: WU, Z. Y., RAVEN, P. H. & HONG, D. Y. (eds) *Flora of China*, pp. 153–207. Beijing: Science Press.
- HUGHES, M. (2008). *An Annotated Checklist of Southeast Asian Begonia*. Edinburgh: Royal Botanic Garden Edinburgh.

-
- HUGHES, M. & PULLAN, M. (2007). *Southeast Asian Begonia Database*. Electronic publication accessible via www.rbge.org.uk.
- IRMSCHER, E. (1914). Neue Begoniaceen Papuasians mit Einschluß von Celebes. *Bot. Jahrb. Syst.* 50: 335–383.
- IUCN (2001). *IUCN Red List Categories and Criteria, Version 3.1*. IUCN Species Survival Commission. Gland, Switzerland and Cambridge, UK: IUCN.
- TEBBITT, M. C. (1997). *A systematic investigation of Begonia section Sphenanthera (Hassk.) Benth. & Hook.f.* PhD thesis, University of Glasgow.
- TEBBITT, M. C. (2005a). *Begonias: Cultivation, Identification, and Natural History*. Portland, OR: Timber Press.
- TEBBITT, M. C. (2005b). Three new species and a new subspecies of *Begonia* (Begoniaceae) from Asia. *Edinburgh J. Bot.* 61(2–3): 97–107.
- TEBBITT, M. C., LOWE-FORREST, L., SANTORIELLO, A., CLEMENT, W. L. & SWENSEN, S. M. (2006). Phylogenetic relationships of Asian *Begonia*, with an emphasis on the evolution of rain-ballist and animal dispersal mechanisms in sections *Platycentrum*, *Sphenanthera* and *Leprosae*. *Syst. Bot.* 31(2): 327–336.
- THOMAS, D. C. (2010). *Phylogenetics and historical biogeography of Southeast Asian Begonia L. (Begoniaceae)*. PhD thesis, University of Glasgow.
- THOMAS, D. C. & HUGHES, M. (2008). *Begonia varipeltata* (Begoniaceae): a new peltate species from Sulawesi, Indonesia. *Edinburgh J. Bot.* 65(3): 369–374.
- THOMAS, D. C., ARDI, W. H., HARTUTININGSIH & HUGHES, M. (2009a). Two new species of *Begonia* (Begoniaceae) from South Sulawesi, Indonesia. *Edinburgh J. Bot.* 66(2): 229–238.
- THOMAS, D. C., ARDI, W. H. & HUGHES, M. (2009b). Two new species of *Begonia* (Begoniaceae) from Central Sulawesi, Indonesia. *Edinburgh J. Bot.* 66(1): 103–114.

Received 6 October 2010; accepted for publication 25 January 2011