

# Romania - The Wildlife of Transylvania

Naturetrek Tour Report

6 – 13 June 2015



Black Woodpecker



Ghost Moth



Hungarian Glider



Lesser Spotted Eagle

Report & images compiled by Andy Harding



Naturetrek Mingledown Barn Wolf's Lane Chawton Alton Hampshire GU34 3HJ UK

T: +44 (0)1962 733051

F: +44 (0)1962 736426

E: [info@naturetrek.co.uk](mailto:info@naturetrek.co.uk)

W: [www.naturetrek.co.uk](http://www.naturetrek.co.uk)

Tour Participants:                   Andy Harding (Naturetrek Naturalist)  
  Dan Marin (Local Guide)  
  With fourteen Naturetrek clients

## Day 1

Saturday 6th June

The whole group had met up before we boarded our flight from Heathrow Terminal 5 to Bucharest. Upon arrival, baggage reclaim and passport control were very smooth, and as we exited we met Simona, our local tour manager. We packed the luggage into our air-conditioned bus and headed roughly north on the E60 dual carriageway. Most of the route was through flat arable countryside where Marsh Harrier and White Stork reminded us we were not in the UK. Our rest stop saw some of the group venturing up an enticing looking bank, rewarded by two day flying moths: Specked Yellow, which was to become very familiar, and Burnet Companion. We also found our only Chequered Skipper butterfly of the trip.

Continuing on, the road became narrower and more winding as we climbed gently up through the Prahova Valley with its prosperous looking towns and chalets as well as beautiful forest; initially deciduous, but with a greater coniferous mix as we rose higher. There was a brief descent onto the plain of Brasov before climbing again towards Zarnesti. On the far outskirts of the town the road to Magura became steeper, decidedly rougher and hence much slower. The low speed enabled both Dipper and Grey Wagtail to be seen in a stream alongside the road. Eventually we arrived at the Mosorel Guesthouse where we met George, his wife, Oana, and their family. The views were simply breath-taking. We were allocated our rooms and then enjoyed an absolutely excellent dinner.

## Day 2

Sunday 7th June

A spectacular clear blue sky from just after dawn drew out several early risers, whether to bird watch or examine the moths which had landed on the walls of the guesthouse during the night. Five adult and two baby Chamois were the main attraction from the lawn outside the guesthouse.

A well-photographed Tree Pipit was the pick of the birds, but the local Black Redstart gained plenty of attention. A decent collection of moths in pots were ready for pre-breakfast viewing just before 7am: Birch Mocha, Barred Hook-tip, Marbled Coronet and Purple Treble-bar were perhaps the pick.

Before 8am our local wildlife guide for the week, Dan Marin, joined us and we walked down to the waiting bus. As we did so, a Fieldfare let us know it was a local nester, while both Sticky and Nottingham Catchfly and two species of Bellflower – Spreading and Creeping, gave us a clear idea of the amazing local flora.

Again Dippers were spotted on the slow decent to Zarnesti, where a brief stop at the local pharmacy allowed many to photograph the local White Storks with two chicks at their nest.

We then drove to the Barsa area where we explored a couple of valleys. Black-veined Moths, mimicking white butterflies, again fooled us. Two all too fleeting views of the large, dark, Poplar Admiral simply made us hope for a static encounter with this wonderful species. The butterfly stars however were a superb Purple-Shot Copper and a couple of Hungarian Gliders – all clearly recently emerged. Honey Buzzards were the top avian feature.

The same habitat saw large numbers of Bug Orchids and a wonderful Meadow Clary. However the sheer density of attractive species provided a spectacular valley floor in contrast to the superb mixed woodland clothing the hills.

In this idyllic setting, alongside a stream, our lunch 'appeared': chicken and pork cooked on a barbecue and delicious home-made dips, followed by cherry cake and lots of cherries. Elderflower cordial, herbal tea and Moldova region Merlot provided the liquid refreshment. Apart from the latter, all were locally produced or home made by the amazing Simona and her mum.

Reluctantly, the group dragged itself back to the bus for the fairly short drive to the further outskirts of Zarnesti and another valley. We heard many bird species such as Goldcrest and Marsh Tit, and a single Jay and three very obliging Crossbills were enjoyed.

Lady's Bedstraw gave Dan the opportunity to explain how it could be used as a Rennet substitute in cheese-making, and he explained the local uses for the various woodland trees. A Pearl-bordered Fritillary was certainly the best butterfly.

The length of the walks and high temperatures suggested a welcome return to the guesthouse by 5pm, allowing varied leisure activities before dinner and the evening log. The guesthouse itself and its location was the best aspect of the trip for David B.

## Day 3

**Monday 8th June**

It was another beautiful morning, with a very similar crop of birds amidst absolutely stunning scenery; and today just two Chamois were on the crags opposite. However there was another bumper crop of moths including crowd-pleasers like Popular Hawk-moth, Pebble Prominent and Peppered Moth, while Gallium Carpet and Bordered Gothic were more for the officianados.

Breakfast was its usual delicious self and we set off at 8am for the slow drive down the mountain. A couple who had set off ahead of the bus proved a bit elusive, but the delay was minimal. A stop alongside a couple of lorry trailers loaded with beehives enabled Dan to explain the mechanics of mass mobile bee husbandry. Each hive has a different coloured front so that bees always go to the correct hive! A showy Marsh Tit was a welcome accompaniment.

In Sinca Nova village we transferred to two horse-drawn carts and headed along the main road towards the Stramba River. Here, this mode of transport is quite normal and was excellent for birdwatching since little notice was taken of it by the birds. So, before we had turned off up the Stramba Valley itself, we had excellent views of Lesser Spotted Eagle low over the carts, many Red-backed Shrikes, and lovely views of Fieldfares.

The first bird of real interest once we had disembarked from the carts was a Lesser Grey Shrike, rapidly followed by a Hoopoe on an adjacent bush. This interrupted those photographing Small Pearl-bordered Fritillaries or generally botanising.

As we moved on, Golden Orioles constantly sang and Cuckoos called, while a Honey Buzzard decided to circle low overhead – fantastic! This was followed almost immediately by a Lesser Spotted Eagle doing exactly the same thing. We could hardly believe it.

False Helleborine, Wild Iris and the endemic Cow Wheat were among the most widely appreciated of the flowers, while three different orchids in just a couple of square metres occupied much camera time. On the track alongside this flower-feast, a gorgeous Poplar Admiral butterfly briefly drew nutrients from drying mud. We took the bus for a mid-section along the valley, but in total this longish amble in quite hot temperatures, fortunately with some shady respite, was a sheer delight.

Three other elements in this walk must be mentioned: firstly the opportunity to place ones feet in the adjacent stream, secondly the occurrence of Beautiful Demoiselle at regular intervals along the stream, and thirdly there was another magnificent lunch of freshly cooked turkey, cabbage salad, ‘celery something’ (but what was it apart from delicious), both quince and plum pancakes, strawberries and the usual range of liquid refreshment. Eventually we needed to return to Sinca Nova where we had time to visit the Black Church – one of just four in Brasov County.

Then it was a delightful early dinner in a local guesthouse where the different brandies and local wine could not sully a beautiful meal. After dinner we returned to the Stramba Valley, but this time driving deep into the mountains where we met a ranger and walked to a hide overlooking an open area where food is hidden in old tree trunks. Two bears were seen by the first few of the group as we arrived. These did not return, but disappointment for the rest of us was short-lived. In total, eight adult bears and two cubs put in an appearance, with very interesting interactions between them all. Bears were still in view when we left the hide in rapidly fading light. It was a very happy crew which arrived back in Magura after 11pm.

## Day 4

## Tuesday 9th June

Another clear blue sky and what was different? – well a superb moth catch was. Among the moths, two iconic individuals took the eye – the green-tinged Orache Moth and a Goat Moth. The local birds were still enjoyed by the early risers, even if nothing new was seen.

Because of our late night last night, we took breakfast at 8am and then were joined by Dan. Before the start of our walk, we looked in the pasture to examine some bear ‘poo’ less than 100 metres from the guest house. There is no need for alarm – there is little negative interaction between bears and humans. When we set off down the road, Dan explained the structure of the local agricultural economy, and why roofs and haystacks were the shape they were. Above, all the meadows, just a few weeks before they were to be cut by scythe, were dense with flowers of many species, attended by thousands of insects of many kinds. The wonderful hay meadows were not exclusive to Magura, but were a feature of several of our walks.

Black Redstart and Common Redstart sang from the farm buildings or fed young, but the flora, dominated by small patches of Arnica, Globe and Heart-shaped Orchids, and Bladder Gentian were the highlights as we worked our way down towards the top of the tree line.

In the very last meadow, strewn with some rotting tree trunks, a Black Woodpecker's head appeared above the grass. Seen both here, in flight, and on a nearby pine - this was certainly the avian highlight of the day.

Once on the floor of the gorge we turned upstream. The butterflies were different here – common UK species such as Comma, Orange Tip and Green-veined White appeared for the first time. A couple of Dippers and Grey Wagtail provided the bird interest as we moved to another idyllic lunch stop, with excellent fare.

A few hundred metres further on and we were in the gorge proper and on a track inaccessible to vehicles. A number of Alpine Swifts chattered as they zoomed around their nesting cliff. Again the flora took the prizes with Leopards Bane alongside Alpine Bells, small strands of Birds-nest Orchid, Wolfsbane, and at an uncharacteristically low altitude, Hungarian Soldonella. Also *Aqualegia transylvanica* was admired.

Our final stop in the gorge was an area where there had been a recent emergence of Duke of Burgundy Fritillaries – a nice butterfly bonus. The descent down the gentle gradient of the track was a little quicker and we found our minibus waiting for us to make the trip back to Magura.

To compensate for last night, we had a couple of hours of relaxation before dinner – another delight.

## Day 5

## Wednesday 10th June

A huge thunderstorm had erupted during the middle of the night with bouts of heavy rain even through breakfast. However the weather was kind and we left just after 8am to take a stroll down the part of the Zarnesti Valley closest to the town. Accompanied by a few Grey Wagtails, two adult and three young Dippers performed brilliantly for the cameras.

A brief stop in the town to pick up a few essentials saw the heaviest rain during the rest of the day. After taking in a Little Owl at the edge of town, we disembarked and set off up the lower pasture slopes at the start of the Barsa Valley. Initially things were rather slow, with the first of several Tree Pipits engaging the group. The number of that species grew as we went beyond another delightful lunch stop, provisioned by Simona and her mother with their 4X4. At lunch, flat-leaf parsley was picked at our picnic site to enhance the delicious fare. We also sang Happy Birthday to Dan, in English and Romanian. Understandably the flora took precedence with Yellow Melancholy Thistle, Vipers Grass, Fringed Dianthus, Viola Dacia and Fragrant Orchid to the fore. The spectacle of a 'field' of Meadow Clary and banks of Butterfly, Fragrant and Lax-flowered Orchids were a heavenly spectacle.

By this time we had acquired a small dog as we moved higher up the trail in increasingly hot conditions. At last a few butterflies were appearing including Pearly Heath which was new for the trip.

What is more frustrating than enjoying looking at bear tracks below a large dense conifer and hearing the call of a Nutcracker immediately above you! Amazingly this bird stayed long enough for us to extract ourselves and look at the top of the conifer. It moved several times but allowed really great views - a very fortunate sighting at this time of year.

When we finally took a track to descend out of the hills it took us through a shepherd's camp which was not there two weeks ago. There were pens for Cows, Sheep, and even a few Pigs. The shepherds' outdoor sleeping quarters had perhaps five dogs to protect all the livestock from Bears and Wolves: the footprints of both were within 400 metres of the camp. It appeared to be a harsh existence.

We were shown into the cheese-making hut where 100 litres of sheep's milk per day is made into cheese. It was less than a day old and simply delicious. We were unable to sample the cheese wrapped in green bark, but saw the immaculately cut bark being bought up the hill. All in all, the visit was simply a privilege and a highlight of the trip.

Our dog became three friendly beasts as we walked down to the 'road' where, after a welcome lay down on the grass, the bus came to retrieve us and take us back to Magura. We had enjoyed a long, tiring and very successful day.

## Day 6

Thursday 11th June

Heavy rain early in the night had cleared by dawn, so a clear blue sky and stunning views greeted the early risers. We were very lucky with the weather again. The most attractive new moths today were two which are relatively common in the UK – Buff Tip and Peach Blossom, while a Small Elephant Hawk-moth was a winner for the connoisseur and non-connoisseur alike.

Our main objective today was the Dobromvitsa Fishpond complex. As soon as we stood on the bank a Great White Egret flew off and a distant Night Heron was seen through the telescope. This latter species proved relatively common and was clearly nesting along with Little Egret and Pygmy Cormorant, another prize bird. A single Marsh Warbler could not be seen, but Great Reed Warblers sang from the top of reeds, apparently oblivious to our presence.

Along with decent numbers of Pochard, a single male Ferruginous Duck provided great viewing on the water and during a couple of close-range 'fly-pasts'.

A couple of Marsh Harriers stooged around and eventually a pair indulged in lengthy courtship display. For rarity, the star raptor was an Osprey which cruised round a couple of times, apparently looking for fish but not taking the plunge. Two flights by Little Bittern were not seen by all, which was a pity given the attractiveness of the species.

Three distant Black Terns on the first lake were precursors to perhaps 40 showing much better on the second lake. Once again the atmosphere created by masses of birdsong and the calling and bubbling Cuckoos in lovely habitat was almost as important as the species seen.

The lunch truck was espied next to a beautiful shady Oak copse – again with a superb outlook. The 'mushroom dish to die for' finally made an appearance in another amazing lunch. Just as we were driving off there was a call to stop opposite a small wheat field full of Corncockle, Forked Larkspur and other goodies.

From here we went to the lake at Rotbav where we saw a Penduline Tit nest with young and occasionally adults. Savi's and Marsh Warblers sang behind the nest and a nesting colony of Black-headed Gulls seemed to be able to cope with the local Marsh Harriers.

The centre of Brasov was our next stop, where Dan gave us a guided tour of the famous Black Church. On the outskirts we took an early evening meal where specialities such as Tripe and Garlic Soup and Fried Pigs Brain were enjoyed by several of the group, while more regular western fare was also available.

Our second Bear hide visit was disappointing, not just for the lack of bears – it happens, but also due to the airless nature of the hide, so it was a slightly downbeat end to an otherwise good day.

## Day 7

Friday 12th June

A Chamois grazing in the pasture below the guesthouse was an early surprise and a delight. We made a rather later start to compensate for the late return last night.

Having picked up Dan in Zarnesti, we travelled for about an hour to the area adjacent to the Narcissus Forest. Almost immediately a Hoopoe circled round us carrying food - we were parked under its nest tree! We spent the first hour and half in the open spaces. A White Stork drifted over and a Whinchat was a new species, as were the Skylarks overhead. Two distant Grey Shrikes could not be specifically identified in the increasing heat haze. The butterflies were very similar to previous sites even though the vegetation was sparser. We took a short stroll in the forest where Golden Orioles were seen well, Tree Pipits sang and were sometimes seen, and a Nuthatch showed well.

When our lunch arrived it was enjoyed under some more shady Oaks and was as stunning as ever. At the end of the meal we said heartfelt goodbyes to Simona's mum, who had cooked all the interesting food!

There followed a much longer forest walk where some excellent flowers were seen: *Campanula persesifolia* is actually cultivated in the UK; Swallow-wort helps burglars open locks accordingly to Romanian myth; Solomon's Seal is another flower found wild here; while a Heath Spotted Orchid of the white subspecies *Sylvanvicus* was the star of the show. Some interesting fungi were also evident – the genuinely evil-looking Devils' Fingers certainly looked the part. Large edible Boletus were matched by an equally large but inedible Amonita.

When we eventually emerged on the forest edge into pasture land, Dan persuaded a shepherd to play local tunes on a wild Pear leaf – an extraordinary dying art which we were privileged to hear, see and record. We turned to head back to the bus and saw a Grey Shrike on a nearby sapling. It didn't stay long, but long enough to photograph to establish it as a Great Grey Shrike, right at the southern end of its breeding range

We then travelled back to Zanesti where we bade farewell to the amazing Dan, a superb guide for wildlife and incomparable interpreter of local life and agriculture which took our tour to a different level. David B paid an eloquent and appropriate tribute.

Back at Guesthouse Mosorel in Magura, most of us took individual nostalgic walks amidst the stunning countryside where the whole community seemed most harmonious. We had a lovely evening and another splendid dinner but unfortunately most of us are leaving tomorrow.

## Day 8

Saturday 13th June

Lucky David D and Cathy (aka Birdfinder General) have another three days here, so we bade a sad farewell to them, and to George and Oana, who had looked after us brilliantly.

Because of a fairly late flight back we were able to spend an interesting hour touring Bran Castle with its tenuous connections to the Dracula story. Despite the very large number of other visitors, this was deemed a worthwhile stop.

Simona would not let us leave Romania without yet another excellent picnic. She had gone ahead of us in her 4 x 4 and set up camp in a pleasant pull-in, with Orchids!

Tony thanked Simona and her mother for all they had done for us. Another sad farewell. He also paid tribute to our driver, Dorin who then took us to Bucharest airport where we caught our flight back to Heathrow.

Once at Heathrow there were more farewells between a very harmonious and good humoured group. A wide range of knowledge and enthusiasms had been mutually shared which helped make it a great trip.

Thank you all.

## Receive our e-newsletter

Join the Naturetrek e-mailing list and be the first to hear about new tours, additional departures and new dates, tour reports and special offers. Visit [www.naturetrek.co.uk](http://www.naturetrek.co.uk) to sign up.

## Naturetrek Facebook

We are delighted to launch the Naturetrek Facebook page so that participants of Naturetrek tours can remain in touch after the holiday and share photos, comments and future travel plans.

Setting up a personal profile at [www.facebook.com](http://www.facebook.com) is quick, free and easy. The [Naturetrek Facebook page](#) is now live; do please pay us a visit!



## Species Lists

Birds (✓ = recorded but not counted; h = heard only)

	Common name	Scientific name	June							
			6	7	8	9	10	11	12	13
1	Mallard	<i>Anas platyrhynchos</i>						10		
2	Common Pochard	<i>Aythya ferina</i>						20		
3	Ferruginous Duck	<i>Aythya nyroca</i>						1		
4	Little Grebe	<i>Tachybaptus ruficollis</i>						h		
5	Great Crested Grebe	<i>Podiceps cristatus</i>						12		
6	White Stork	<i>Ciconia ciconia</i>		2	2		5	4	3	8
7	Little Bittern	<i>Ixobrychus minutus</i>						2		
8	Black-crowned Night Heron	<i>Nycticorax nycticorax</i>						20		
9	Grey Heron	<i>Ardea cinerea</i>						12		
10	Great Egret	<i>Ardea alba</i>						2		
11	Little Egret	<i>Egretta garzetta</i>						12		
12	Great Cormorant	<i>Phalacrocorax carbo</i>						2		
13	Pygmy Cormorant	<i>Phalacrocorax pygmeus</i>						12		
14	European Honey Buzzard	<i>Pernis apivorus</i>		2	1					
15	Western Marsh Harrier	<i>Circus aeruginosus</i>	1					6	1	
16	Eurasian Sparrowhawk	<i>Accipiter nisus</i>	1	1						
17	Common Buzzard	<i>Buteo buteo</i>	2	4	4	5	3	4	4	1
18	Lesser Spotted Eagle	<i>Aquila pomarina</i>			3				1	
19	Common Kestrel	<i>Falco tinnunculus</i>				1	2	1	1	1
20	Hobby	<i>Falco subbuteo</i>			1					
21	Moorhen	<i>Gallinula chloropus</i>						1		
22	Eurasian Coot	<i>Fulica atra</i>						12		
23	Northern Lapwing	<i>Vanellus vanellus</i>						h		
24	Green Sandpiper	<i>Tringa ochropus</i>						1		
25	Common Sandpiper	<i>Actitis hypoleucos</i>						1		
26	Black-headed Gull	<i>Chroicocephalus ridibundus</i>						100		
27	Common Tern	<i>Sterna hirundo</i>	2							
28	Black Tern	<i>Chlidonias niger</i>						40		
29	Rock Dove	<i>Columba livia</i>	✓	✓			✓	✓	✓	✓
30	Common Wood Pigeon	<i>Columba palumbus</i>	3			2			4	
31	Eurasian Collared Dove	<i>Streptopelia decaocto</i>	✓	✓	✓	✓	✓	✓	✓	✓
32	Common Cuckoo	<i>Cuculus canorus</i>	h	h	h	1	h	2	1	
33	Tawny Owl	<i>Strix aluco</i>		h						
34	Little Owl	<i>Athene noctua</i>		2			1			
35	Alpine Swift	<i>Tachymarptis melba</i>		4		12			4	
36	Common Swift	<i>Apus apus</i>	✓		✓	✓			✓	✓
37	European Bee-eater	<i>Merops apiaster</i>							h	
38	Eurasian Hoopoe	<i>Upupa epops</i>			2				2	
39	Middle Spotted Woodpecker	<i>Dendrocopos medius</i>							1	
40	Black Woodpecker	<i>Dryocopus martius</i>				1				

	Common name	Scientific name	June							
			6	7	8	9	10	11	12	13
41	European Green Woodpecker	<i>Picus viridis</i>					1			
42	Grey-headed Woodpecker	<i>Picus canus</i>		h	1					
43	Red-backed Shrike	<i>Lanius collurio</i>		1	15	1	3	1	10	
44	Lesser Grey Shrike	<i>Lanius minor</i>			1				1	
45	Great Grey Shrike	<i>Lanius excubitor</i>							1	
46	Eurasian Golden Oriole	<i>Oriolus oriolus</i>			3				4	
47	Eurasian Jay	<i>Garrulus glandarius</i>		1	6	5	1	2	4	
48	Eurasian Magpie	<i>Pica pica</i>	✓	✓	✓	✓	✓	✓	✓	✓
49	Spotted Nutcracker	<i>Nucifraga caryocatactes</i>					1			
50	Western Jackdaw	<i>Coloeus monedula</i>		1			2		3	
51	Rook	<i>Corvus frugilegus</i>		1			20	50	✓	
52	Hooded Crow	<i>Corvus cornix</i>	✓	✓	✓	✓	✓	✓	✓	✓
53	Northern Raven	<i>Corvus corax</i>		5	15	3	1	2		
54	Marsh Tit	<i>Poecile palustris</i>		h	5			h		
55	Coal Tit	<i>Pariparus ater</i>		h		h				
56	Great Tit	<i>Parus major</i>	✓	✓	1	1	h		2	
57	Eurasian Penduline Tit	<i>Remiz pendulinus</i>						1		
58	Eurasian Skylark	<i>Alauda arvensis</i>			h				2	
59	Barn Swallow	<i>Hirundo rustica</i>	✓	✓	✓	✓	✓	✓	✓	✓
60	Common House Martin	<i>Delichon urbicum</i>	✓	✓	✓	✓	✓	✓	✓	✓
61	Common Chiffchaff	<i>Phylloscopus collybita</i>		h	h	h	h		1	
62	Great Reed Warbler	<i>Acrocephalus arundinaceus</i>						3+		
63	Marsh Warbler	<i>Acrocephalus palustris</i>						2h		
64	Savi's Warbler	<i>Locustella luscinioides</i>						h		
65	Eurasian Blackcap	<i>Sylvia atricapilla</i>		h	h	h	h	h	h	
66	Garden Warbler	<i>Sylvia borin</i>		h	h	h	h	h		
67	Lesser Whitethroat	<i>Sylvia curruca</i>					1	3		
68	Common Whitethroat	<i>Sylvia communis</i>					h	2		
69	Goldcrest	<i>Regulus regulus</i>		h		h				
70	Eurasian Wren	<i>Troglodytes troglodytes</i>		1		1				
71	Eurasian Nuthatch	<i>Sitta europaea</i>							1	
72	Common Starling	<i>Sturnus vulgaris</i>	✓	✓	✓	✓	✓	✓	✓	✓
73	Common Blackbird	<i>Turdus merula</i>		2	5	3	✓	✓	✓	✓
74	Fieldfare	<i>Turdus pilaris</i>		10	10	2		✓	✓	✓
75	Song Thrush	<i>Turdus philomelos</i>		6	4	6	2	1	2	
76	Mistle Thrush	<i>Turdus viscivorus</i>				2			1	
77	European Robin	<i>Erithacus rubecula</i>		1	h	1				
78	Black Redstart	<i>Phoenicurus ochruros</i>	1	2	2	4	2	1	4	2
79	Common Redstart	<i>Phoenicurus phoenicurus</i>				1	1		2	
80	Whinchat	<i>Saxicola rubetra</i>							1	
81	White-throated Dipper	<i>Cinclus cinclus</i>	2	1		1	5			
82	House Sparrow	<i>Passer domesticus</i>	✓	✓	✓	✓	✓	✓	✓	✓
83	Eurasian Tree Sparrow	<i>Passer montanus</i>						1	1	

	Common name	Scientific name	June								
			6	7	8	9	10	11	12	13	
84	Romanian' Yellow Wagtail	<i>Motacilla flava dombrowskii</i>							1		
85	Grey Wagtail	<i>Motacilla cinerea</i>			7	2	5	2	2	1	
86	White Wagtail	<i>Motacilla alba</i>	✓	✓	✓	✓	✓	✓	✓	✓	✓
87	Tree Pipit	<i>Anthus trivialis</i>		1	1		10		5+		
88	Common Chaffinch	<i>Fringilla coelebs</i>	h	h	4	2	✓	✓	✓	✓	
89	European Goldfinch	<i>Carduelis carduelis</i>			1				1		
90	Hawfinch	<i>Coccothraustes coccothraustes</i>			3	1			1		
91	Yellowhammer	<i>Emberiza citrinella</i>		h	2	h	2	1	2	1	
92	Common Reed Bunting	<i>Emberiza schoeniclus</i>						1			

### Butterflies

1	Orange Tip	<i>Anthocharis cardamines</i>				✓	✓	✓	✓	
2	Green-veined White	<i>Artogeia napi</i>				✓	✓			
3	Brimstone	<i>Gonepteryx rhamni</i>		✓	✓	✓	✓	✓	✓	
4	Wood White .sp	<i>Leptidea sp</i>				✓	✓			
5	Brown Argus	<i>Aricia agestis</i>		✓	✓		✓			
6	Green Hairstreak	<i>Callophrys rubi</i>		✓	✓					
7	Purple-shot Copper	<i>Lycaena alciphron</i>		✓						
8	Large Copper	<i>Lycaena dispar rutilus</i>			✓					
9	Small Copper	<i>Lycaena phlaeas</i>							✓	
10	Silver-studded Blue	<i>Plebejus argus</i>			✓	✓				
11	Common Blue	<i>Polyommatus icarus</i>	✓	✓	✓	✓	✓	✓	✓	
12	Duke of Burgundy	<i>Hamearis lucina</i>				✓				
13	Lesser Marbled Fritillary	<i>Brenthis ino</i>			✓					
14	Pearl-bordered Fritillary	<i>Clossiana euphrosyne</i>		✓						
15	Small Pearl-bordered Fritillary	<i>Clossiana selene</i>			✓		✓	✓	✓	
16	Assmann's Fritillary	<i>Mellicta britomartis</i>								
17	Poplar Admiral	<i>Limenitis populi</i>		✓	✓					
18	Hungarian Glider	<i>Neptis rivularis</i>		✓		✓				
19	Comma	<i>Polygonia c-album</i>				✓			✓	
20	Small Tortoiseshell	<i>Aglais urticae</i>		✓		✓			✓	
21	Painted Lady	<i>Vanessa cardui</i>		✓		✓	✓		✓	
22	Pearly Heath	<i>Coenonympha arcania</i>					✓			
23	Small Heath	<i>Coenonympha pamphilus</i>		✓		✓	✓	✓	✓	
24	Woodland Ringlet	<i>Erebia medusa</i>		✓		✓	✓		✓	
25	Large Wall Brown	<i>Lasiommata maera</i>				✓				
26	Wall Brown	<i>Lasiommata megera</i>		✓						
27	Meadow Brown	<i>Maniola jurtina</i>		✓	✓				✓	
28	Speckled Wood	<i>Pararge aegeria</i>		✓	✓	✓			✓	
29	Chequered Skipper	<i>Carterocephalus palaemon</i>	✓							
30	Large Skipper	<i>Ochlodes sylvanus</i>							✓	
31	Grizzled Skipper	<i>Pyrgus malvae</i>		✓						

## Moths

Map-winged Swift, <i>Hepialus fusconebulosa</i>	Goat Moth, <i>Cossus cossus</i>
Fox Moth, <i>Macrothylacia rubi</i>	Scalloped Hook-tip, <i>Falcaria lacertinaria</i>
Barred Hook-tip, <i>Watsonalia cultralia</i>	Peach Blossom, <i>Thyatira batis</i>
Satin Lutestring, <i>Tetheella fluctuosa</i>	Birch Mocha, <i>Cyclophora albipunctata</i>
Lace Border, <i>Scopula ornata</i>	Pale Mullein Wave, <i>Scopula incanata</i>
Cream Wave, <i>Scopula floslactata</i>	Red Twin-spot Carpet, <i>Xanthorhoe spadicearia</i>
Silver-ground Carpet, <i>Xanthorhoe montanata</i>	Garden Carpet, <i>Xanthorhoe fluctuata</i>
Gallium Carpet, <i>Epirhoe galiata</i>	Small Phoenix, <i>Ecliptopera silaceata</i>
Spruce Carpet, <i>Thera britannica</i>	Grass Rivulet, <i>Perizoma albulata</i>
Sandy Carpet, <i>Perizoma flavofasciata</i>	Foxglove Pug, <i>Eupithecia pulchellata</i>
Bordered Pug, <i>Eupithecia succenturiata</i>	Common Pug, <i>Eupithecia vulgata</i>
Freyer's Pug, <i>Eupithecia intricata</i>	Treble-bar, <i>Aplocera plagiata</i>
Purple Treble-bar, <i>Aplocera praeformata</i>	Clouded Border, <i>Lomaspilis marginata</i>
Latticed Heath, <i>Ematurga atomaria</i>	Brimstone Moth, <i>Opisthrograptis luteolata</i>
Speckled Yellow, <i>Pseudopanthera macularia</i>	Lunar Thorn, <i>Selenia lunularia</i>
Scalloped Hazel, <i>Odontopera bidentata</i>	Orange Moth, <i>Angerona prunaria</i>
Peppered Moth, <i>Biston betularia</i>	Willow Beauty, <i>Peribatodes rhomboidaria</i>
Pale Oak Beauty, <i>Hypomecis punctinalis</i>	Engrailed, <i>Ectropis bistrotata</i>
Grey Birch, <i>Aethalura punctulata</i>	Light Emerald, <i>Campaea margaritata</i>
Annulet, <i>Charissa obscurata</i>	Black-veined moth, <i>Siona lineata</i>
Poplar Hawk-moth, <i>Laothoe populi</i>	Small Elephant Hawk-moth, <i>Deilephila porcellus</i>
Hummingbird Hawk-moth, <i>Macroglossum stellatarum</i>	Feline, <i>Cerura erminea</i>
Poplar Kitten, <i>Furcula bifida</i>	Iron Prominent, <i>Notodonta dromedarius</i>
Pebble Prominent, <i>Notodonta ziczac</i>	Lesser Swallow Prominent, <i>Pheosia gnoma</i>
Coxcomb Prominent, <i>Ptilodon cpuchina</i>	Maple Prominent, <i>Ptilodon cuculina</i>
Pale Prominent, <i>Pterostoma palpina</i>	Marbled Brown, <i>Drymonia dodonaea</i>
Buff-tip, <i>Phalera bucephala</i>	Pale Tussock, <i>Calliteara pudibunda</i>
Black Arches, <i>Lymantria monacha</i>	Dingy Footman, <i>Eilema griseola</i>
Four-spotted Footman, <i>Lithosia quadra</i>	White Ermine, <i>Spilosoma lubricipeda</i>
Buff Ermine, <i>Spilosoma luteum</i>	Light Feathered Rustic, <i>Agrotis cinerea</i>
Heart and Dart, <i>Agrotis exclamationis</i>	Flame Shoulder, <i>Ochropleura plecta</i>
Setaceous Hebrew Character, <i>Xestia c-nigrum</i>	Feathered Ear, <i>Pachetra sagittigera</i>

Bordered Gothic, <i>Heliophobus reticulata</i>	Pale-shouldered Brocade, <i>Lacanobia thalassina</i>
Marbled Coronet, <i>Hadena confusa</i>	White Point, <i>Mythimna albipuncta</i>
Shark, <i>Cuculla umbratica</i>	Dark Brocade, <i>Blepharita adusta</i>
Treble-lines, <i>Charanyca trigrammatica</i>	Poplar Grey, <i>Acronicta megacephala</i>
Miller, <i>Acronicta leporina</i>	Alder Moth, <i>Acronicta alni</i>
Knot Grass, <i>Acronicta rumicis</i>	Orache Moth, <i>Trachea atriplicis</i>
Marbled minor sp, <i>Oligia sp</i>	Scarce Bordered Straw, <i>Helicoverpa armigera</i>
Green Silver-lines, <i>Pseudoips prasinana</i>	Nut-tree Tussock, <i>Colocasia coryli</i>
Common Silver Y, <i>Autographa gamma</i>	Burnished Brass, <i>Diachrysis chrysitis</i>
Burnet Companion, <i>Euclidia glyphica</i>	Beautiful Snout, <i>Hypena crassalis</i>
Buttoned Snout, <i>Hypena rostralis</i>	Fan-foot, <i>Zanclognatha tarsipennalis</i>

## Dragonflies

Banded Demoiselle, <i>Calopteryx splendens</i>	Beautiful Demoiselle, <i>Calopteryx virgo</i>
Broad-bodied Chaser, <i>Libellula fulva</i>	Black-tailed Skimmer, <i>Orthetrum cancellatum</i>

## Mammals

Red Squirrel, <i>Sciurus vulgaris</i>	Muskrat, <i>Ondatra zibethicus</i>
Brown Hare, <i>Lepus europaeus</i>	Red Fox, <i>Vulpes vulpes</i>
Brown Bear, <i>Ursus arctos</i>	Chamois, <i>Rupicapra rupicapra</i>
Roe Deer, <i>Capreolus capreolus</i>	Wild Boar, <i>Sus scrofa</i>

## Reptiles

Sand Lizard, <i>Lacerta agilis</i>	Balkan Green Lizard, <i>Lacerta viridis</i>
------------------------------------	---

## Amphibians

Alpine Newt, <i>Triturus alpinus</i>	Yellow-bellied Toad, <i>Bombina variegata</i>
Agile Frog, <i>Rana dalmatina</i>	Common Frog, <i>Rana temporaria</i>

## Plants

Scientific Name	Common Name
<b>PTERIDOPHYTES</b>	
<i>Asplenium ruta-muraria</i>	Wall Rue
<i>Asplenium trichomanes</i>	Maidenhair Spleenwort
<i>Asplenium trichomanes-ramosum (=viride)</i>	Green Spleenwort
<i>Athyrium filix-femina</i>	Lady Fern
<i>Cystopteris fragilis (=regia)</i>	Brittle Bladder Fern
<i>Dryopteris carthusiana</i>	Narrow Buckler Fern
<b>Ferns and Allies</b>	

<b>Scientific Name</b>	<b>Common Name</b>
<i>Dryopteris filix-mas</i>	Male Fern
<i>Equisetum arvense</i>	Field Horsetail
<i>Equisetum palustre</i>	Marsh Horsetail
<i>Equisetum telmateia</i>	Giant Horsetail
<i>Gymnocarpium robertianum</i>	Limestone Fern
<i>Matteucia struthiopteris</i>	Ostrich Fern
<i>Polypodium vulgare</i>	Common Polypody
<i>Polystichum aculeatum</i>	Hard Shield Fern
<i>Pteridium aquilinum</i>	Bracken
<i>Selaginella helvetica</i>	Swiss Clubmoss
<b>GYMNOSPERMS</b>	
<b>Conifers etc</b>	
<i>Abies alba</i>	Silver Fir
<i>Juniperus communis</i>	Common Juniper
<i>Larix decidua</i>	Larch
<i>Picea abies</i>	Norway Spruce
<i>Pinus sylvestris</i>	Scots Pine
<b>ANGIOSPERMS</b>	
<b>Aceraceae</b>	
<i>Acer campestre</i>	Field Maple
<i>Acer platanoides</i>	Norway Maple
<i>Acer pseudoplatanus</i>	Sycamore
<b>Apiaceae</b>	
<i>Aegopodium podagraria</i>	Ground Elder
<i>Angelica sylvestris</i>	Wild Angelica [leaves]
<i>Anthriscus sylvestris</i>	Cow Parsley
<i>Astrantia major</i>	Great Masterwort
<i>Chaerophyllum hirsutum</i>	Hairy Chervil
<i>Chaerophyllum temulentum</i>	Rough Chervil
<i>Conium maculatum</i>	Hemlock
<i>Heracleum sphondylium</i>	Hogweed
<i>Pimpinella major</i>	Greater Burnet Saxifrage
<i>Sanicula europaea</i>	Sanicle
<b>Araliaceae</b>	
<i>Hedera helix</i>	Ivy
<b>Aristolochiaceae</b>	
<i>Asarum europaeum</i>	Asarabacca
<i>Aristolochia clematitis</i>	Birthwort
<b>Asclepiadaceae</b>	
<i>Vincetoxicum hirundinaria</i>	Swallow-wort

Scientific Name	Common Name
<b>Asteraceae</b>	
<i>Achillea millefolium</i>	Yarrow
<i>Antennaria dioica</i>	Catsfoot
<i>Arctium lappa</i>	Greater Burdock
<i>Arctium minus</i>	Lesser Burdock
<i>Arnica montana</i>	Mountain Arnica
<i>Artemisia vulgaris</i>	Mugwort
<i>Bellis perennis</i>	Daisy
<i>Carduus crispus</i>	Wetted Thistle
<i>Carduus personata</i>	
<i>Carlina acaulis</i>	Stemless Carlina Thistle
[ <i>Centaurea cyanus</i> ]	Cornflower
<i>Centaurea jacea</i>	Brown Knapweed
<i>Cichorium intybus</i>	Chicory
<i>Cirsium arvense</i>	Creeping Thistle
<i>Cirsium eristhales</i>	Yellow Melancholy Thistle
<i>Cirsium rivulare</i>	Brook Thistle
<i>Cirsium vulgare</i>	Spear Thistle
<i>Doronicum columnae</i>	Heart-lvd Leopardsbane
<i>Erigeron acer</i>	Blue Fleabane
<i>Erigeron annuus</i>	
<i>Filago vulgaris</i>	Common Cudweed
<i>Hieracium aurantiacum</i>	Orange Hawkweed
<i>Hieracium pilosella (Pilosella officinarum)</i>	Mouse-ear Hawkweed
<i>Lactuca serriola</i>	Prickly Lettuce
<i>Lapsana communis</i>	Nipplewort
<i>Leucanthemum vulgare</i>	Ox-eye Daisy
<i>Matricaria discoidea</i>	Pineapple Mayweed
<i>Mycelis muralis</i>	Wall Lettuce
<i>Petasites albus</i>	White Butterbur
<i>Scorzonera purpurea</i>	Purple Viper's-grass
<i>Senecio aquaticus</i>	Marsh Ragwort
<i>Tanacetum vulgare</i>	Tansy
<i>Taraxacum officinale gp.</i>	Dandelion
<i>Tragopogon pratensis</i>	Goatsbeard
<i>Tripleurospermum inodorum</i>	Scentless Mayweed
<i>Tussilago farfara</i>	Coltsfoot
<b>Balsaminaceae</b>	
[ <i>Impatiens parviflora</i> ]	Small Balsam
<b>Betulaceae</b>	
<i>Alnus glutinosa</i>	Common Alder
<i>Alnus viridis</i>	Green Alder
<i>Betula pendula</i>	Silver Birch
<i>Carpinus betulus</i>	Hornbeam

<b>Scientific Name</b>	<b>Common Name</b>
<b>Boraginaceae</b>	
<i>Alkanna tinctoria</i> (=lehmanii)	Dyer's Alkanet
<i>Cynoglossum officinale</i>	Houndstongue
<i>Echium vulgare</i>	Viper's Bugloss
<i>Myosotis alpestris</i>	Alpine Wood Forget-me-not
<i>Myosotis arvensis</i>	Field forget-me-not
<i>Myosotis scorpioides</i> (=palustris)	Water forget-me-not
<i>Myosotis sylvatica</i>	Wood forget-me-not
<i>Pulmonaria filarszkyana</i>	
<i>Symphytum cordatum</i>	[end.]
<i>Symphytum officinale</i>	Common Comfrey
<i>Symphytum tuberosum</i>	Tuberous Comfrey
<b>Brassicaceae</b>	
<i>Alliaria petiolata</i>	Garlic Mustard
<i>Arabidopsis arenosa</i>	
<i>Arabis hirsuta</i>	Hairy Rockcress
<i>Arabis sagittata</i>	
<i>Arabis turrita</i>	Towercress
<i>Armoracia rusticana</i>	Horse Radish
<i>Bunias orientalis</i>	Warty Cabbage
<i>Capsella bursa-pastoris</i>	Shepherd's Purse
<i>Cardamine amara</i>	Large Bittercress
<i>Cardamine bulbifera</i>	Coral-root Bittercress
<i>Cardamine flexuosa</i>	Wavy Bittercress
<i>Cardamine impatiens</i>	Narrow-lvd Bittercress
<i>Cardamine resedifolia</i>	
[ <i>Cardaria draba</i> (=Lepidium)]	Hoary Cress
<i>Eruca sativa</i>	Rocket
<i>Erysimum cf hungaricum?</i>	
<i>Hesperis matronalis</i>	Dames Violet
[ <i>Lepidium virginicum</i> ]	Poor-man's Pepperwort
[ <i>Lobularia maritima</i> ]	
<i>Lunaria rediviva</i>	Perennial Honesty
<i>Peltaria alliacea</i>	
<i>Raphanus raphanistrum</i>	Wild Radish
<i>Rorippa pyrenaica</i>	
<i>Sinapis arvensis</i>	Charlock
<i>Sisymbrium irio</i>	London Rocket
<i>Sisymbrium officinale</i>	Hedge Mustard
<i>Thlaspi arvensis</i>	Field Pennycress
<b>Callitrichaceae</b>	
<i>Callitriche</i> sp.	Water Starwort
<b>Campanulaceae</b>	
<i>Campanula alpina</i>	Alpine Bellflower
<i>Campanula patula</i>	Spreading Bellflower



<b>Scientific Name</b>	<b>Common Name</b>
<i>Campanula persicifolia</i>	Peach-leaved Bellflower
<i>Phyteuma spicatum ssp coeruleum</i>	Spiked Rampion
<b>Cannabinaceae</b>	
<i>Humulus lupulus</i>	Hop
<b>Caprifoliaceae</b>	
<i>Lonicera xylosteum</i>	Fly Honeysuckle
<i>Sambucus ebulus</i>	Dwarf Elder /Danewort
<i>Sambucus nigra</i>	Common Elder
<i>Sambucus racemosa</i>	Alpine /Red-berried Elder
<i>Viburnum lantana</i>	Wayfaring Tree
<i>Viburnum opulus</i>	Guelder Rose
<b>Caryophyllaceae</b>	
<i>Agrostemma githago</i>	Corn Cockle
<i>Arenaria serpyllifolia</i>	Thyme-lvd Sandwort
<i>Cerastium alpinum</i>	Alpine Mouse-ear
<i>Cerastium banaticum</i>	
<i>Cerastium fontanum</i>	Common Mouse-ear
<i>Dianthus carthusianorum</i>	Carthusian Pink
<i>Dianthus giganteiformis (=pontederae)</i>	Tall Pink
<i>Lychnis flos-cuculi</i>	Ragged Robin
<i>Lychnis viscaria</i>	Sticky Catchfly
<i>Moehringia muscosa</i>	
<i>Moehringia trinervia</i>	Three-veined Sandwort
<i>Myosoton aquaticum</i>	Water Chickweed
<i>Sagina apetala</i>	Annual Pearlwort
<i>Sagina procumbens</i>	Procumbent Pearlwort
<i>Scleranthus perennis</i>	Perennial Knawel
<i>Silene latifolia (=alba)</i>	White Campion
<i>Silene dioica</i>	Red Campion
<i>Silene nutans</i>	Nottingham Catchfly
<i>Silene vulgaris</i>	Bladder Campion
<i>Spergula arvensis</i>	Corn Spurrey
<i>Spergularia rubra</i>	Sand Spurrey
<i>Stellaria graminea</i>	Lesser Stitchwort
<i>Stellaria holostea</i>	Greater Stitchwort
<i>Stellaria media</i>	Common Chickweed
<i>Stellaria nemorum</i>	Wood Stitchwort
<b>Celastraceae</b>	
<i>Euonymus latifolius</i>	Alpine Spindle
<b>Ceratophyllaceae</b>	
<i>Ceratophyllum demersum</i>	Rigid Hornwort

<b>Scientific Name</b>	<b>Common Name</b>
<b>Chenopodiaceae</b>	
<i>Chenopodium album</i>	Fat Hen
<i>Chenopodium bonus-henricus</i>	Good King Henry
<b>Cistaceae</b>	
<i>Helianthemum nummularium</i>	Common Rockrose
<b>Convolvulaceae</b>	
<i>Calystegia sepium</i>	Hedge Bindweed
<i>Convolvulus arvensis</i>	Field Bindweed
<b>Corylaceae</b>	
<i>Corylus avellana</i>	Hazel
<b>Cucurbitaceae</b>	
<i>Bryonia cretica</i>	White Bryony
<b>Dipsacaceae</b>	
<i>Dipsacus fullonum</i>	Teasel
<i>Knautia arvensis</i>	Field Scabious
<i>Scabiosa ochroleuca</i>	Cream Scabious
<b>Euphorbiaceae</b>	
<i>Euphorbia amygdaloides</i>	Wood Spurge
<i>Euphorbia epithymoides (=polychroma)</i>	Many-coloured Spurge
<i>Euphorbia esula</i>	Leafy Spurge
<i>Euphorbia lathyris</i>	Caper Spurge
<i>Mercurialis perennis</i>	Dogs Mercury
<b>Fabaceae</b>	
<i>Anthyllis vulneraria</i>	Common Kidney Vetch
<i>Astragalus glycyphyllos</i>	Wild Liquorice
<i>Chamaespartium sagittale (=Genistella)</i>	Winged Greenweed
<i>Coronilla varia (=Securigera)</i>	Crown Vetch
<i>Genista tinctoria (inc. campestris)</i>	Dyer's Greenweed
<i>Lathyrus pratensis</i>	Meadow Vetchling
<i>Lathyrus sylvestris</i>	Narrow-lvd Everlasting Pea
<i>Lathyrus tuberosus</i>	Tuberous Pea
<i>Lotus corniculatus</i>	Birdsfoot Trefoil
<i>Lotus pedunculatus (=uliginosus)</i>	Greater Birdsfoot Trefoil
<i>Medicago lupulina</i>	Black Medick
<i>Melilotus altissima</i>	Tall Melilot
<i>Onobrychis montana</i>	Mountain Sainfoin
<i>Onobrychis viciifolia</i>	Sainfoin
<i>Ononis fruticosa</i>	Shrubby Restharrow
<i>Ononis repens</i>	Rest Harrow
<i>Ononis viscosa</i>	
[ <i>Robinia pseudacacia</i> ]	False Acacia
<i>Trifolium alpestre</i>	

<b>Scientific Name</b>	<b>Common Name</b>
<i>Trifolium montanum</i>	Mountain Clover
<i>Trifolium pannonicum</i>	Hungarian Clover
<i>Trifolium pratense</i>	Red Clover
<i>Trifolium repens</i>	White Clover
<i>Vicia cracca</i>	Tufted Vetch
<i>Vicia hirsuta</i>	Hairy Tare
<i>Vicia hybrida</i>	Hairy Yellow Vetchling
<i>Vicia sativa</i>	Common Vetch
<i>Vicia sepium</i>	Bush Vetch
<b>Fagaceae</b>	
[ <i>Castanea sativa</i> ]	Sweet Chestnut
<i>Fagus sylvatica</i>	Beech
<i>Quercus robur</i>	Pedunculate Oak
<b>Gentianaceae</b>	
<i>Gentiana cruciata</i>	Cross Gentian
<i>Gentiana utriculosa</i>	Bladder Gentian
<i>Gentiana verna (=Calathiana)</i>	Spring Gentian
<b>Geraniaceae</b>	
<i>Geranium dissectum</i>	Cut-Ivd Cranesbill
<i>Geranium lucidum</i>	Shining Cranesbill
<i>Geranium molle</i>	Dovesfoot Cranesbill
<i>Geranium palustre</i>	Marsh Cranesbill
<i>Geranium phaeum</i>	Dusky Cranesbill
<i>Geranium pratense</i>	Meadow Cransebill
<i>Geranium purpureum</i>	Little Robin
<i>Geranium robertianum</i>	Herb Robert
<b>Hippocastanaceae</b>	
<i>Aesculus hippocastanum</i>	
<b>Hypericaceae (=Guttiferae)</b>	
<i>Hypericum humifusum</i>	Trailing St.John's Wort
<i>Hypericum maculatum</i>	Imperforate St.John's Wort
<i>Hypericum tetrapterum</i>	Square-stalked St.John's Wort
<b>Juglandaceae</b>	
[ <i>Juglans nigra</i> ]	Black Walnut
<b>Lamiaceae</b>	
<i>Acinos alpinus</i>	Alpine Calamint
<i>Ajuga genevensis</i>	Blue Bugle
<i>Ajuga reptans</i>	Common Bugle
<i>Galeopsis speciosa</i>	Large-flowered Hemp Nettle
<i>Galeopsis tetrahit</i>	Common Hemp-nettle
<i>Glechoma hederacea</i>	Ground Ivy

<b>Scientific Name</b>	<b>Common Name</b>
<i>Lamium galeobdolon</i>	Yellow Archangel
<i>Lamium album</i>	White Dead Nettle
<i>Lamium garganicum</i>	Large Red Deadnettle
<i>Lamium purpureum</i>	Red Dead Nettle
<i>Lycopus europaeus</i>	Gypsywort
<i>Mentha aquatica</i>	Water Mint
<i>Nepeta nuda</i>	Hairless Catmint
<i>Prunella vulgaris</i>	Self-heal
<i>Salvia glutinosa</i>	Sticky Sage
<i>Salvia pratensis</i>	Meadow Clary
<i>Salvia verticillata</i>	Whorled Clary
<i>Stachys officinalis</i>	Betony
<i>Stachys palustris</i>	Marsh Woundwort
<i>Stachys sylvatica</i>	Hedge Woundwort
<b>Lentibulariaceae</b>	
<i>Pinguicula alpina</i>	Alpine Butterwort
<b>Linaceae</b>	
<i>Linum catharticum</i>	Fairy Flax
<i>Linum perenne</i> ssp <i>extraxillare</i>	Perennial Flax
<b>Loranthaceae</b>	
<i>Loranthus europaeus</i>	
<b>Lythraceae</b>	
<i>Lythrum salicaria</i>	Purple Loosestrife
<b>Malvaceae</b>	
<i>Lavatera thuringiaca</i>	Small Tree Mallow
<i>Malva sylvestris</i>	Common Mallow
<b>Moraceae</b>	
[ <i>Morus alba</i> ]	White Mulberry
<b>Oleaceae</b>	
<i>Fraxinus excelsior</i>	Ash
<i>Fraxinus ornus</i>	Manna Ash
<i>Ligustrum vulgare</i>	Wild Privet
<i>Syringa vulgaris</i>	Common Lilac
<b>Onagraceae</b>	
<i>Epilobium hirsutum</i>	Great Willowherb
<b>Oxalidaceae</b>	
<i>Oxalis acetosella</i>	Wood Sorrel
<i>Oxalis europaea</i>	

<b>Scientific Name</b>	<b>Common Name</b>
<b>Papaveraceae</b>	
<i>Chelidonium majus</i>	Greater Celendine
<i>Corydalis cava (=bulbosa)</i>	Bulbous Corydalis
<i>Corydalis solida</i>	Solid-tubered Corydalis
<i>Papaver rhoeas</i>	Common Poppy
<b>Parnassiaceae</b>	
<i>Parnassia palustris</i>	Grass of Parnassus
<b>Plantaginaceae</b>	
<i>Plantago lanceolata</i>	Ribwort Plantain
<i>Plantago major</i>	Greater Plantain
<i>Plantago media</i>	Hoary Plantain
<b>Polygalaceae</b>	
<i>Polygala amara</i>	Bitter Milkwort
<i>Polygala comosa</i>	Tufted Milkwort
<i>Polygala vulgaris</i>	Common Milkwort
<b>Polygonaceae</b>	
<i>Persicaria amphibia</i>	Amphibious Bistort
<i>Persicaria bistorta (=Polygonum)</i>	Bistort
<i>Persicaria lapathifolia (=Polygonum)</i>	Pale Persicaria
<i>Persicaria maculata</i>	Redshank
<i>Polygonum aviculare</i>	Knotgrass
<i>Polygonum viviparum</i>	Alpine Bistort
<i>Reynoutria (=Fallopia) japonica</i>	Japanese Knotweed
<i>Rumex acetosa</i>	Common Sorrel
<i>Rumex acetosella</i>	Sheeps Sorrel
<i>Rumex alpinus</i>	Monks Rhubarb
<i>Rumex crispus</i>	Curled Dock
<i>Rumex obtusifolius</i>	Broad-ldv Dock
<i>Rumex sanguineus</i>	Wood Dock
<b>Primulaceae</b>	
<i>Anagallis arvensis</i> (inc blue form)	Scarlet Pimpernel
<i>Cortusa matthiola</i>	Alpine Bells
<i>Lysimachia vulgaris</i>	Yellow Loosestrife
<i>Lysimachia nummularia</i>	Creeping Jenny
<i>Primula veris</i>	Cowslip
<i>Soldanella hungarica</i>	Hungarian Snowbell
<b>Pyrolaceae</b>	
<i>Monesis uniflora</i>	One-flowered Wintergreen
<b>Ranunculaceae</b>	
<i>Aquilegia transylvanica</i>	
<i>Caltha palustris</i>	Marsh Marigold

<b>Scientific Name</b>	<b>Common Name</b>
<i>Clematis alpina</i>	Alpine Clematis
<i>Clematis vitalba</i>	Traveller's Joy
<i>Consolida regalis</i>	Forking Larkspur
<i>Ranunculus acris</i>	Meadow Buttercup
<i>Ranunculus bulbosus</i>	Bulbous Buttercup
<i>Ranunculus constantinopolitanus</i>	
<i>Ranunculus ophioglossifolius</i>	Adderstongue Spearwort
<i>Ranunculus repens</i>	Creeping Buttercup
<i>Ranunculus scleratus</i>	Celery-leaved Buttercup
<i>Ranunculus cf. trichophyllus</i>	a Water Crowfoot sp.
<i>Thalictrum aquilegifolium</i>	Greater Meadow Rue
<i>Trollius europaeus</i>	Globeflower
<b>Resedaceae</b>	
<i>Reseda lutea</i>	Wild Mignonette
<b>Rhamnaceae</b>	
<i>Frangula alnus</i>	Alder Buckthorn
<b>Rosaceae</b>	
<i>Crataegus monogyna</i>	Hawthorn
<i>Filipendula ulmaria</i>	Meadowsweet
<i>Filipendula vulgaris</i>	Dropwort
<i>Fragaria vesca</i>	Wild Strawberry
<i>Geum rivale</i>	Water Avens
<i>Geum urbanum</i>	Herb Bennet
<i>Potentilla anserina</i>	Silverweed
<i>Potentilla collina</i> agg.	Palm-leaf Cinquefoil
<i>Potentilla erecta</i>	Tormentil
<i>Potentilla reptans</i>	Creeping Cinquefoil
<i>Prunus cerasifera</i>	Cherry Plum
<i>Prunus spinosa</i>	Blackthorn
<i>Rosa canina</i>	Dog Rose
<i>Rosa cf pendulina (=alpina)</i>	Alpine Rose
<i>Rubus caesius</i>	Dewberry
<i>Rubus idaeus</i>	Raspberry
<i>Sorbus aucuparia</i>	Rowan
<i>Spiraea chamaedryfolia</i>	Elm-leaved Spiraea
<b>Rubiaceae</b>	
<i>Cruciata glabra</i>	
<i>Cruciata laevipes</i>	Crosswort
<i>Galium aparine</i>	Common Cleavers
<i>Galium boreale</i>	Northern Bedstraw
<i>Galium odoratum</i>	Woodruff
<i>Galium verum</i>	Ladies Bedstraw

<b>Scientific Name</b>	<b>Common Name</b>
<b>Salicaceae</b>	
<i>[Populus x canadensis]</i>	Italian Poplar
<i>Populus nigra</i>	Black Poplar
<i>Populus tremula</i>	Aspen
<i>Salix alba</i>	White Willow
<i>Salix caprea</i>	Goat Willow
<i>Salix cinerea</i>	Grey Willow
<i>Salix fragilis</i>	Crack Willow
<b>Saxifragaceae</b>	
<i>Chrysosplenium alternifolium</i>	Alternate-lvd Golden Saxifrage
<i>Saxifraga cuneifolia</i>	Spoon-leaved Saxifrage
<i>Saxifraga paniculata</i>	Livelong Saxifrage
<i>Saxifraga rotundifolia</i>	Round-lvd Saxifrage
<b>Scrophulariaceae</b>	
<i>Cymbalaria muralis</i>	Ivy-leaved Toadflax
<i>Digitalis ambigua (=grandiflora)</i>	Large Yellow Foxglove
<i>Euphrasia rostkoviana</i>	Eyebright
<i>Linaria vulgaris</i>	Yellow Toadflax
<i>Melampyrum nemorosum</i>	
<i>Melampyrum pratense</i>	Common Cow-wheat
<i>Melampyrum sylvaticum</i>	Small Cow-wheat
<i>Pedicularis comosa</i>	Crested Lousewort
<i>Pedicularis cf palustris</i>	Marsh Lousewort
<i>Pedicularis verticillata</i>	Verticillate Lousewort
<i>Rhinanthus minor</i>	Yellow Rattle
<i>Rhinanthus cf rumelicus</i>	
<i>Scrophularia canina</i>	French Figwort
<i>Scrophularia nodosa</i>	Common Figwort
<i>Scrophularia scopolii</i>	Italian Figwort
<i>Verbascum nigrum</i>	Dark Mullein
<i>Verbascum phoeniceum</i>	Purple Mullein
<i>Verbascum thapsus</i>	Great Mullein
<i>Veronica acinifolia</i>	French Speedwell
<i>Veronica arvensis</i>	Wall Speedwell
<i>Veronica austriaca</i>	Large Speedwell
<i>Veronica beccabunga</i>	Brooklime
<i>Veronica chamaedrys</i>	Germander Speedwell
<i>Veronica montana</i>	Wood Speedwell
<i>[Veronica persica]</i>	Common Field Speedwell
<i>Veronica urticifolia</i>	Nettle-lvd Speedwell
<b>Tiliaceae</b>	
<i>Tilia platyphyllos</i>	Large -leaved Lime
<i>Tilia x vulgaris</i>	Common Lime

<b>Scientific Name</b>	<b>Common Name</b>
<b>Urticaceae</b>	
<i>Urtica dioica</i>	Stinging Nettle
<b>Valerianaceae</b>	
<i>Valeriana montana</i>	
<i>Valeriana officinalis</i>	Common Valerian
<i>Valeriana tripteris</i>	Three-lyd Valerian
<b>Violaceae</b>	
<i>Viola alpina</i>	Alpine Pansy
<i>Viola arvensis</i>	Field Pansy
<i>Viola biflora</i>	Yellow Wood Violet
<i>Viola declinata</i>	
<i>Viola tricolor</i>	Heartsease
<b>Alismataceae</b>	
<i>Alisma plantago-aquatica</i>	Common Water-Plantain
<b>Amaryllidaceae</b>	
<i>Narcissus poeticus</i>	Poet's Narcissus [over]
<b>Butomaceae</b>	
<i>Butomus umbellatus</i>	Flowering Rush
<b>Cyperaceae</b>	
<i>Carex echinata</i>	Star Sedge
<i>Carex otrubae</i>	False Fox Sedge
<i>Carex riparia</i>	Greater Pond Sedge
<i>Carex rostrata</i>	Bottle Sedge
<i>Carex spicata</i>	Spiked Sedge
<i>Carex sylvatica</i>	Wood Sedge
<i>Eriophorum angustifolium</i>	Common Cotton Grass
<i>Schoenoplectus lacustris (=Scirpus)</i>	Common Club-rush / Bulrush
<i>Scirpus sylvaticus</i>	Wood Club-rush
<b>Hydrocharitaceae</b>	
<i>Lagarosiphon major</i>	Curly Water-Thyme
<b>Iridaceae</b>	
<i>Iris aphylla</i>	
<i>Iris pseudacorus</i>	Yellow Flag
<i>Iris sibirica</i>	Siberian Iris
[ <i>Sisyrinchium montanum</i> ]	
<b>Juncaceae</b>	
<i>Juncus articulatus</i>	Jointed Rush
<i>Juncus conglomeratus</i>	Compact Rush
<i>Juncus effusus</i>	Soft Rush



<b>Scientific Name</b>	<b>Common Name</b>
<i>Juncus inflexus</i>	Hard Rush
<i>Luzula campestris</i>	Field Wood-rush
<i>Luzula luzuloides (=nemorosa)</i>	White Wood-rush
<b>Liliaceae</b>	
<i>Colchicum autumnale</i>	Autumn Crocus [leaves only]
<i>Lilium martagon</i>	Martagon Lily
<i>Maianthemum bifolium</i>	May Lily
<i>Paris quadrifolia</i>	Herb Paris
<i>Polygonatum odoratum</i>	Scented Solomons Seal
<i>Polygonatum verticillatum</i>	Whorled Solomon's Seal
<i>Veratrum album</i>	White False Helleborine
<b>Orchidaceae</b>	
<i>Cephalanthera longifolia</i>	Sword-leaved Helleborine
<i>Cephalanthera damasonium</i>	White Helleborine
<i>Dactylorhiza cf. cordigera</i>	Heart-shaped Marsh Orchid
<i>Dactylorhiza cf. incarnata</i>	Early Marsh Orchid
<i>Dactylorhiza fuchsii</i>	Common Spotted Orchid
<i>Dactylorhiza maculata</i>	Heath-spotted Orchid
<i>Dactylorhiza majalis</i>	
<i>Dactylorhiza sambucina</i>	Elder-flowered Orchid
<i>Gymnadenia conopsea</i>	Fragrant Orchid
<i>Listera ovata (=Neottia)</i>	Twayblade
<i>Neottia nidus-avis</i>	Birds Nest Orchid
<i>Orchis coriophora</i>	Bug Orchid
<i>Orchis elegans</i>	
<i>Orchis morio</i>	Green-winged Orchid
<i>Orchis ovalis (=mascula var signifera)</i>	
<i>Orchis ustulata</i>	Burnt-tip Orchid
<i>Platanthera bifolia</i>	Lesser Butterfly Orchid
<i>Traunsteinera globosa</i>	Round-headed Orchid
<b>Poaceae</b>	
<i>Alopecurus pratensis</i>	Meadow Foxtail
<i>Anthoxanthemum odoratum</i>	Sweet Vernal Grass
<i>Arrhenatherum elatius</i>	False Oat-grass
<i>Briza media</i>	Quaking Grass
<i>Bromus hordaceus (=mollis)</i>	Soft Brome
<i>Cynosurus cristatus</i>	Crested Dog'stail
<i>Dactylis glomerata</i>	Cocksfoot
<i>Festuca ovina</i>	Sheep's Fescue
<i>Glyceria maxima</i>	Reed Sweet-grass
<i>Glyceria plicata (=notata)</i>	Plicate Sweet Grass
<i>Holcus lanatus</i>	Yorkshire Fog
<i>Hordeum murinum</i>	Wall Barley
<i>Lolium perenne</i>	Perennial Ryegrass
<i>Melica uniflora</i>	Wood Melick

<b>Scientific Name</b>	<b>Common Name</b>
<i>Nardus stricta</i>	Mat Grass
<i>Phalaris arundinacea</i>	Reed Canary Grass
<i>Phleum pratense</i>	Common Timothy Grass
<i>Phragmites australis</i>	Common Reed
<i>Poa annua</i>	Annual Meadow Grass
<i>Poa nemoralis</i>	Wood Meadow Grass
<i>Poa pratensis</i>	Smooth Meadow Grass
<i>Poa trivialis</i>	Rough Meadow Grass

**Typhaceae**

<i>Typha latifolia</i>	Great Reedmace
------------------------	----------------

**BRYOPHYTES**

*Amblystegium serpens*  
*Anomodon viticulosus*  
*Atrichum undulatum*  
*Brachythecium rutabulum*  
*Calliergonella cuspidata*  
*Ceratodon purpureus*  
*Climacium dendroides*  
*Ctenidium molluscum*  
*Funaria hygrometrica*  
*Homalothecium sericeum*  
*Hylocomium splendens*  
*Hypnum cupressiforme*  
*Mnium undulatum*  
*Neckera complanata*  
*Neckera crispa*  
*Plagiomnium affine*  
*Pogonatum aloides*  
*Polytrichum formosum*  
*Rhytidiadelphus squarrosus*  
*Thuidium tamariscinum*

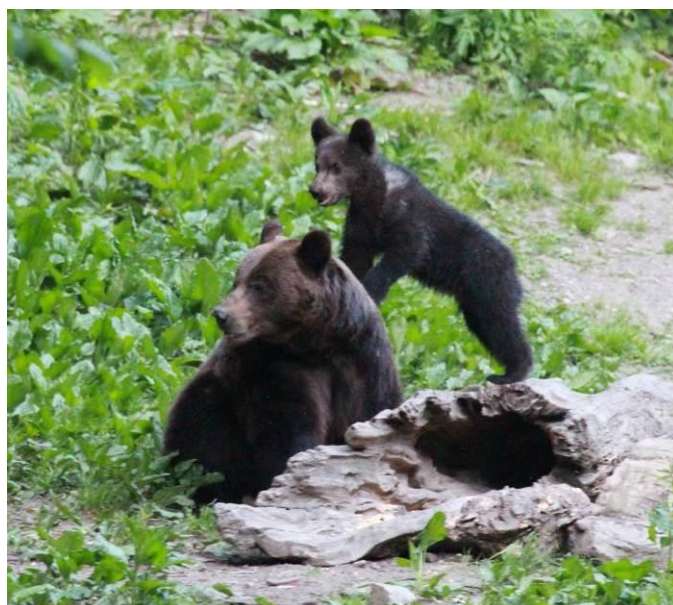
*Conocephalum conicum*  
*Marchantia polymorpha*  
*Porella platyphylla*

**FUNGI**

<i>Agrocybe</i> sp.	
<i>Amanita rubescens</i>	The Blusher
<i>Boletus luridiformis</i> (=erythropus)	
<i>Collybia dryophila</i>	
<i>Conocybe subovalis</i>	
<i>Conocybe</i> cf. <i>subpubescens</i>	
<i>Hypholoma fasciculare</i>	
<i>Inocybe rimosa</i>	
<i>Marasmius oreades</i>	

**Scientific Name****Common Name**

<i>Mycena haematopus</i>	
<i>Mycena renati</i>	
<i>Panaeolina foenisecii</i>	
<i>Psathyrella marcescibilis</i>	
<i>Bjerkandera adusta</i>	
<i>Fomes fomentarius</i>	
<i>Gloeophyllum sepiarium</i>	
<i>Inonotus radiatus</i>	
<i>Oxyporus populinus</i>	
<i>Schizophyllum commune</i>	
<i>Stereum hirsutum</i>	
<i>Trametes gibbosa</i> (=Pseudotrametes)	
<i>Trametes versicolor</i>	Turkey Tail
<i>Bovista plumbea</i>	
<i>Handkea utriformis</i>	
<i>Kuehneola uredinis</i>	a Bramble stem rust
<i>Puccinia poarum</i>	a Coltsfoot rust
<i>Puccinia punctiformis</i>	Creeping Thistle Rust
<i>Puccinia caricina</i>	Stinging Nettle Rust
<i>Puccinia coronata</i>	Alder Buckthorn Rust
<i>Phragmidium mucronatum</i>	a Rose rust
<i>Triphragmium filipendulae</i>	Dropwort Rust
<i>Triphragmium ulmariae</i>	Meadowsweet Rust
<i>Ustilago longissima</i>	Smut on <i>Glyceria maxima</i>
<i>Erysiphe alphitoides</i>	mildew on <i>Quercus robur</i> lvs
<i>Lachnum brevopilum</i>	
<i>Mollisia cinerea</i>	
<i>Rhytisma acerinum</i>	Tar-spot on Sycamore
<i>Sphaerotheca alchemillae</i>	a mildew on <i>Geum urbanum</i> lvs
<i>Xylaria polymorpha</i>	Dead Man's Fingers
<i>Ramularia rubella</i>	on <i>Rumex obtusifolius</i>
<i>Lycogala terrestre</i>	



Brown Bear,