

**TIMED  
ONLINE**

# UNRESERVED FARM AUCTION

# RENSCHLER FARMS LTD. of CASTOR, AB.

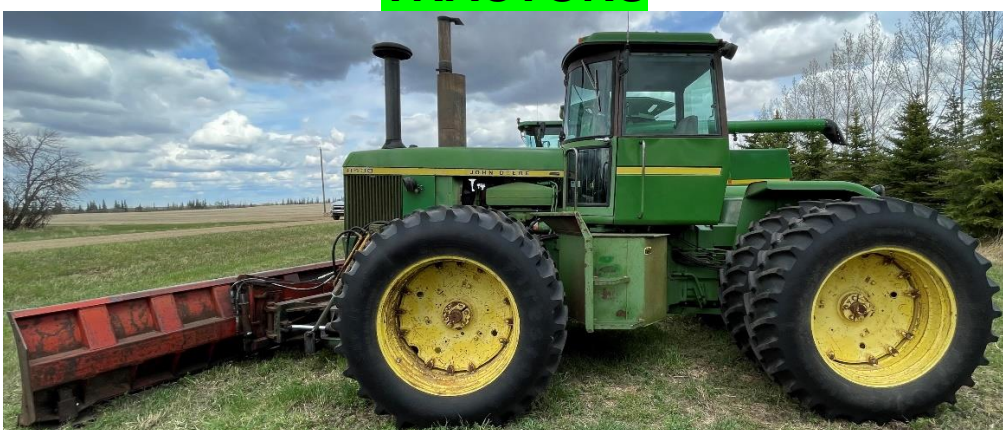
Gate Sign: 12322 – Twp. Rd. #390 SW-4-39-12-W4

**Previewing Starts June 4<sup>th</sup> from 10AM - 6PM**

**LOCATION:** From the Hwy.#36 & Hwy.#599 junction northeast of Castor go 13 km east on Hwy.# 599 to Rg. Rd.# 123 & then go 9.5 km north to Twp. Rd. #390 & then go 2 km west.

**PREVIEWING & BIDDING STARTS ON JUNE 4 AT 10 AM &  
BIDS START CLOSING ON THURSDAY, JUNE 9 AT 10 AM**

## TRACTORS



- 1976 JOHN DEERE 8430 4WD tractor with Leon 14 ft. 6 way front dozer blade & rock hook, 175 hp., Big 1000 pto., 6,007 hours, 3 hydraulic outlets, power quad transmission.
- 1976 JOHN DEERE 4630 tractor, 150 hp., 10,338 hours, 20.8 X 38 duals, 1000 pto., 2 hyd's., 3 pt. hitch.

## GRAIN CART & GRAIN CONVEYOR



- 2005 BOURGAULT 1100 t/a grain cart, 1100 bushel tank, new vertical auger, new drive belt, roll tarp, big & small 1000 pto. shafts, walking beam axle, shedded, excellent condition.
- 2004 FARM KING 10" X 85 ft. belt conveyor, hyd. lift.

## HAYING & LIVESTOCK RELATED

- 2004 HESSTON 956A round baler, kicker, 1000 pto., monitor, only 6,408 total bales, shedded, very good condition.
- 1998 John Deere 945 discbine, 13 ft. 1", 1000 pto, rubber rolls.
- NEW HOLLAND 357 mixermill w/ Forster auger & bale feeder, 1000 pto., extra screens, shedded.
- SCHULER 260F feed/mixer wagon, LH discharge.
- Morris CP-731 cultivator w/ 4 bar harrows, 35 ft., floating hitch.

**Auctioneer's Note:** An equipment realignment auction for Renschler Farms Ltd.....Bid with confidence on this well maintained equipment. For more info. call or text Ryan @ (403)-323-0408 or Dunkle Auctions @ (403) 740-6251.

## COMBINES & HEADERS



- 1997 JOHN DEERE 9600 s/p combine w/ JD 914 pickup, big top hopper, long unload auger, fine cut chopper, chaff spreader, 3,448 engine hours, 2,463 separator hours.



- 1996 JOHN DEERE 9600 s/p combine w/ JD 914 pickup big top hopper, long unload auger, fine cut chopper, chaff spreader, 3,898 engine hours, 2,931 separator hours.
- 1985 JOHN DEERE 7720 Titan II s/p combine w/ 11 ft. p/u header, 3,528 hours, chopper, hydro.



- 2008 JOHN DEERE 936D straight cut draper header, 36 ft. p/u reel, factory transport, header height control, fore & aft.
- (2) - 1998 JOHN DEERE 930R rigid draper headers, 30 ft. p/u reels, Trailtech transports, hyd. fore & aft., cross augers.
- 2010 MASSEY FERGUSON 5200 rigid draper header, 25' p/u reel, double swath, gauge wheels, single knife drive.

**TIMED ONLINE AUCTION - BID ONLINE @ TIMED.DUNKLEAUCTIONS.COM**

# DUNKLE AUCTION SERVICES

**Follow us  
on Facebook**



Call or Text Owner - Ryan: (403)-323-0408  
Dunkle Auctions: 1-877-UP4BIDS (874-2437)

**dunkleauctions.com**



**Pictures on  
Website**

AB License #209769