

Ranford Bushland

Quadrat No.: RF01
Survey Date: 21/09/2020
Personnel: SH, KS, LC
Latitude: Environmentally Sensitive
Longitude:
Location: Ranford Bushland
Topography: Mid Slope
Aspect: Southwest
Slope: 0-3%
Soil: Grey Brown Sand
Rock: 0%
Leaf Litter: 3%
Bare Ground: 20%
Drainage: Well
Condition: Degraded



Vegetation Type: *Eucalyptus tottiana* Woodland

Native Species	Landform	Count	Height (m)	Cover (%)
<i>Allocasuarina fraseriana</i>	Tree	1	4	2
<i>Banksia menziesii</i>	Tree	2	4	4
<i>Caladenia flava</i> subsp. <i>flava</i>	Perennial Herb	1	0.1	0.1
<i>Eucalyptus tottiana</i>	Tree	1	4	20
<i>Kunzea glabrescens</i>	Shrub	2a, 2d	4	15
<i>Regelia ciliata</i>	Shrub	3	2	10
<i>Senecio condylus</i>	Annual Herb	7	0.2	0.2
Weed Species	Landform	Count	Height (m)	Cover (%)
* <i>Asparagus asparagoides</i>	Perennial Herb	2	0.1	0.1
* <i>Brassica tournefortii</i>	Annual Herb	1	0.1	0.1
* <i>Ehrharta calycina</i>	Perennial Grass	2	0.1	0.1
* <i>Erodium botrys</i>	Annual Herb	6	0.1	0.1
* <i>Euphorbia peplus</i>	Annual Herb	200	0.1	15
* <i>Fumaria capreolata</i>	Annual Herb	5	0.3	0.5
* <i>Galium aparine</i>	Annual Herb	13	0.1	0.1
* <i>Geranium molle</i>	Annual Herb	2	0.1	0.1
* <i>Leontodon rhagadioloides</i>	Annual Herb	500	0.1	15
* <i>Lysimachia arvensis</i>	Annual Herb	20	0.1	0.5
* <i>Medicago polymorpha</i>	Annual Herb	30	0.2	0.5
* <i>Solanum nigrum</i>	Annual Herb	2	0.2	0.1
* <i>Sonchus oleraceus</i>	Annual Herb	1	0.1	0.1
* <i>Vicia sativa</i>	Annual Herb	3	0.5	0.2
* <i>Vulpia myuros</i>	Annual Grass	6	0.1	0.1

Quadrat No.: RF02
Survey Date: 21/09/2020
Personnel: SH, KS, LC
Latitude: Environmentally Sensitive
Longitude: Environmentally Sensitive
Location: Rantford
 Bushland
Topography: Mid Slope
Aspect: South
Slope: 0-3%
Soil: Brown Sand
Rock: 0%
Leaf Litter: 60%
Bare Ground: 15%
Drainage: Well
Condition: Degraded



Vegetation Type: *Corymbia calophylla* Woodland

Native Species	Landform	Count	Height (m)	Cover (%)
<i>Corymbia calophylla</i>	Tree	9	5	30
<i>Kunzea glabrescens</i>	Shrub	4d, 9a	2	40
<i>Trachymene pilosa</i>	Annual Herb	2	0.1	0.1
Weed Species	Landform	Count	Height (m)	Cover (%)
* <i>Avena barbata</i>	Annual Grass	1	0.3	0.1
* <i>Brassica tournefortii</i>	Annual Herb	1	0.1	0.1
* <i>Cirsium vulgare</i>	Annual Herb	1	0.1	0.1
* <i>Disa bracteata</i>	Perennial Herb	5	0.1	0.1
* <i>Erigeron sumatrensis</i>	Annual Herb	1	0.1	0.1
* <i>Euphorbia peplus</i>	Annual Herb	200	0.1	15
* <i>Fumaria capreolata</i>	Annual Herb	1	0.1	0.1
* <i>Hypochaeris glabra</i>	Annual Herb	10	0.1	5
* <i>Hypochaeris radicata</i>	Annual Herb	10	0.1	5
* <i>Leontodon rhagadioloides</i>	Annual Herb	200	0.1	30
* <i>Lotus angustissimus</i>	Annual Herb	3	0.1	0.1
* <i>Lysimachia arvensis</i>	Annual Herb	30	0.1	1
* <i>Medicago polymorpha</i>	Annual Herb	6	0.1	0.1
* <i>Olea europaea</i>	Tree	1	0.3	0.1
* <i>Oxalis pes-caprae</i>	Perennial Herb	6	0.2	0.1
* <i>Sonchus oleraceus</i>	Annual Herb	1	0.1	0.1
* <i>Trifolium campestre</i>	Annual Herb	1	0.2	0.1
* <i>Urospermum picroides</i>	Annual Herb	13	0.1	0.2
* <i>Vicia sativa</i>	Annual Herb	1	0.1	0.1
* <i>Vulpia myuros</i>	Annual Grass	5	0.1	0.1
* <i>Wahlenbergia capensis</i>	Annual Herb	1	0.1	0.1

Quadrat No.: RF03
Survey Date: 21/09/2020
Personnel: SH, KS, LC
Latitude: **Environment**
Longitude: **ally Sensitive**
Location: Ranford
 Bushland
Topography: Mid Slope
Aspect: Northwest
Slope: 0-3%
Soil: Grey Sand
Rock: 0%
Leaf Litter: 90%
Bare Ground: 5%
Drainage: Well
Condition: Very Good



Vegetation Type: *Banksia attenuata* and *Allocasuarina fraseriana* Woodland

Native Species	Landform	Count	Height (m)	Cover (%)
<i>Acacia pulchella</i>	Shrub	1	1	0.5
<i>Adenanthos cygnorum</i> subsp. <i>cygnorum</i>	Shrub	2	4	15
<i>Allocasuarina fraseriana</i>	Tree	1	6	25
<i>Amphipogon turbinatus</i>	Perennial Grass	11	0.1	1
<i>Banksia attenuata</i>	Tree	8	6	30
<i>Burchardia congesta</i>	Perennial Herb	3	0.2	0.1
<i>Calytrix flavescens</i>	Shrub	7	0.2	1
<i>Desmodcladus flexuosus</i>	Rush	10	0.1	2
<i>Hibbertia hypericoides</i> subsp. <i>hypericoides</i>	Shrub	23	0.5	20
<i>Hibbertia racemosa</i>	Shrub	2	0.2	0.1
<i>Isolepis marginata</i>	Sedge	8	0.1	0.1
<i>Leucopogon conostephioides</i>	Shrub	4	0.3	0.5
<i>Lyginia barbata</i>	Rush	11	0.3	1.5
<i>Nuytsia floribunda</i>	Tree	2	0.4	0.2
<i>Patersonia occidentalis</i>	Perennial Herb	5	0.3	3
<i>Petrophile linearis</i>	Shrub	1	0.1	0.5
<i>Phyllangium paradoxum</i>	Annual Herb	30	0.1	0.1
<i>Podotheca angustifolia</i>	Annual Herb	1	0.1	0.1
<i>Senecio condylus</i>	Annual Herb	2	0.1	0.1
<i>Stirlingia latifolia</i>	Shrub	7	0.5	0.5
<i>Stylidium amoenum</i>	Perennial Herb	2	0.1	0.1
<i>Stylidium repens</i>	Perennial Herb	4	0.1	1
<i>Thelymitra crinita</i>	Perennial Herb	7	0.1	0.1
<i>Trachymene pilosa</i>	Annual Herb	40	0.1	0.3
<i>Wahlenbergia preissii</i>	Annual Herb	1	0.1	0.1

Native Species	Landform	Count	Height (m)	Cover (%)
<i>Waitzia suaveolens</i>	Annual Herb	1	0.1	0.1
Weed Species	Landform	Count	Height (m)	Cover (%)
* <i>Aira cupaniana</i>	Annual Grass	6	0.1	0.1
* <i>Briza maxima</i>	Annual Grass	200	0.2	10
* <i>Carpobrotus edulis</i>	Perennial Herb	1	0.1	0.1
* <i>Crassula alata</i>	Annual Herb	23	0.1	0.2
* <i>Ehrharta calycina</i>	Perennial Grass	5	0.2	0.2
* <i>Geranium molle</i>	Annual Herb	1	0.1	0.1
* <i>Gladiolus caryophyllaceus</i>	Perennial Herb/Bulb	10	0.1	0.1
* <i>Hypochaeris glabra</i>	Annual Herb	130	0.1	0.5
* <i>Lysimachia arvensis</i>	Annual Herb	5	0.1	0.2
* <i>Medicago polymorpha</i>	Annual Herb	1	0.1	0.1
* <i>Sonchus oleraceus</i>	Annual Herb	5	0.1	0.1
* <i>Stellaria media</i>	Annual Herb	1	0.1	0.1
* <i>Ursinia anthemoides</i> subsp. <i>anthemoides</i>	Annual Herb	3	0.1	0.1
* <i>Wahlenbergia capensis</i>	Annual Herb	1	0.1	0.1

Quadrat No.: RF04
Survey Date: 21/09/2020
Personnel: SH, KS, LC
Latitude:
Longitude: Environment
 ally Sensitive
Location: Ranford
 Bushland
Topography: Upper Slope
Aspect: Northwest
Slope: 0-3%
Soil: Grey Sand
Rock: 0%
Leaf Litter: 50%
Bare Ground: 2%
Drainage: Well
Condition: Very Good



Vegetation Type: *Banksia* Woodland

Native Species	Landform	Count	Height (m)	Cover (%)
<i>Acacia pulchella</i>	Shrub	2	0.2	0.1
<i>Banksia attenuata</i>	Tree	9	6	40
<i>Banksia ilicifolia</i>	Tree	2	5	5
<i>Banksia menziesii</i>	Tree	5	4	20
<i>Beaufortia elegans</i>	Shrub	3	1.5	1
<i>Burchardia congesta</i>	Perennial Herb	2	0.3	0.1
<i>Caladenia flava</i> subsp. <i>flava</i>	Perennial Herb	0.1		0.1
<i>Dasypogon bromeliifolius</i>	Perennial Herb	11	0.3	6
<i>Hibbertia racemosa</i>	Shrub	7	0.2	0.5
<i>Homalosciadium homalocarpum</i>	Annual Herb	2	0.1	0.1
<i>Hovea trisperma</i>	Shrub	1	0.5	0.1
<i>Hypolaena exsulca</i>	Rush	1	0.1	0.1
<i>Laxmannia sessiliflora</i>	Perennial Herb	1	0.1	0.1
<i>Leporella fimbriata</i>	Perennial Herb	21	0.1	0.1
<i>Lomandra caespitosa</i>	Perennial Herb	6	0.1	0.5
<i>Lomandra hermaphrodita</i>	Perennial Herb	7	0.1	0.1
<i>Lyginia barbata</i>	Rush	40	0.3	6
<i>Macrozamia riedlei</i>	Shrub	2	2	4
<i>Melaleuca trichophylla</i>	Shrub	11	0.5	3
<i>Microtis media</i> subsp. <i>media</i>	Perennial Herb	1	0.3	0.1
<i>Patersonia occidentalis</i>	Perennial Herb	5	0.3	3
<i>Petrophile linearis</i>	Shrub	1	0.2	0.1
<i>Platysace filiformis</i>	Perennial Herb	1	0.3	0.1
<i>Schoenus pedicellatus</i>	Sedge	2	0.4	0.5
<i>Scholtzia involucreta</i>	Shrub	13	0.5	3

Native Species	Landform	Count	Height (m)	Cover (%)
<i>Senecio condylus</i>	Annual Herb	5	0.2	0.1
<i>Stylidium amoenum</i>	Shrub	1	0.1	0.1
<i>Stylidium schoenoides</i>	Shrub	1	0.2	0.2
<i>Thelymitra crinita</i>	Perennial Herb	1	0.1	0.1
<i>Thysanotus thyrsoideus</i>	Perennial Herb	5	0.1	0.1
<i>Trachymene pilosa</i>	Annual Herb	23	0.1	0.5
<i>Xanthorrhoea brunonis</i>	Perennial Herb	15	0.5	5
Weed Species	Landform	Count	Height (m)	Cover (%)
* <i>Briza maxima</i>	Annual Grass	110	0.2	3
* <i>Carpobrotus edulis</i>	Perennial Herb	1	0.1	0.1
* <i>Ehrharta longiflora</i>	Annual Herb	10	0.3	0.3
* <i>Hypochaeris radicata</i>	Annual Herb	100	0.1	3
* <i>Lysimachia arvensis</i>	Annual Herb	8	0.1	0.3
* <i>Sonchus oleraceus</i>	Annual Herb	3	0.2	0.1

Quadrat No.: RF05
Survey Date: 21/09/2020
Personnel: SH, KS, LC
Latitude: Environmentally Sensitive
Longitude:
Location: Ranford
 Bushland
Topography: Flat
Aspect: North
Slope: 0%
Soil: Grey Sand
Rock: 0%
Leaf Litter: 70%
Bare Ground: 1%
Drainage: Well
Condition: Very Good



Vegetation Type: *Banksia* Woodland

Native Species	Landform	Count	Height (m)	Cover (%)
<i>Acacia pulchella</i>	Shrub	3	0.1	0.1
<i>Banksia attenuata</i>	Tree	9	6	25
<i>Banksia menziesii</i>	Tree	8	6	15
<i>Bossiaea eriocarpa</i>	Shrub	1	0.1	0.1
<i>Caladenia flava</i>	Perennial Herb	14	0.1	0.1
<i>Calytrix flavescens</i>	Shrub	1	0.1	0.1
<i>Chaetospora curvifolia</i>	Sedge	1	0.1	0.1
<i>Conostylis aculeata</i> subsp. <i>cygnorum</i>	Perennial Herb	2	0.1	0.1
<i>Dampiera linearis</i>	Perennial Herb	1	0.1	0.1
<i>Dasypogon bromeliifolius</i>	Perennial Herb	14	0.5	15
<i>Gompholobium tomentosum</i>	Shrub	1	0.2	0.1
<i>Hibbertia racemosa</i>	Shrub	3	0.1	0.1
<i>Homalosciadium homalocarpum</i>	Annual Herb	1	0.1	0.1
<i>Hovea trisperma</i>	Shrub	3	0.2	0.2
<i>Isolepis marginata</i>	Sedge	20	0.1	0.1
<i>Isotropis cuneifolia</i>	Perennial Herb	1	0.1	0.1
<i>Lomandra caespitosa</i>	Perennial Herb	12	0.2	1
<i>Lomandra hermaphrodita</i>	Perennial Herb	3	0.1	0.1
<i>Lyginia barbata</i>	Rush	5	0.4	0.1
<i>Melaleuca thymoides</i>	Shrub	2	0.1	0.1
<i>Microtis media</i> subsp. <i>media</i>	Perennial Herb	2	0.1	0.1
<i>Phlebocarya ciliata</i>	Perennial Herb	1	0.2	0.1
<i>Platysace filiformis</i>	Perennial Herb	2	0.5	0.5
<i>Poranthera microphylla</i>	Annual Herb	4	0.1	0.1
<i>Quinetia urvillei</i>	Annual Herb	1	0.1	0.1

Native Species	Landform	Count	Height (m)	Cover (%)
<i>Schoenus pedicellatus</i>	Sedge	3	0.3	0.5
<i>Scholtzia involucrata</i>	Shrub	17	0.3	5
<i>Senecio condylus</i>	Annual Herb	10	0.1	0.1
<i>Stylidium amoenum</i>	Perennial Herb	1	0.1	0.1
<i>Thysanotus thyrsoideus</i>	Perennial Herb	3	0.1	0.1
<i>Trachymene pilosa</i>	Annual Herb	21	0.1	1
<i>Tricoryne elatior</i>	Perennial Herb	1	0.1	0.1
<i>Xanthorrhoea brunonis</i>	Shrub	28	0.5	5
<i>Xanthorrhoea preissii</i>	Shrub	10	1.5	10
Weed Species	Landform	Count	Height (m)	Cover (%)
* <i>Aira cupaniana</i>	Annual Grass	1	0.1	0.1
* <i>Arctotheca calendula</i>	Annual Herb	1	0.1	0.1
* <i>Asparagus asparagoides</i>	Perennial Herb	1	0.1	0.1
* <i>Carpobrotus edulis</i>	Perennial Herb	2	0.1	0.1
* <i>Ehrharta longiflora</i>	Annual Grass	9	0.2	0.1
* <i>Erigeron sumatrensis</i>	Annual Herb	1	0.1	0.1
* <i>Galium aparine</i>	Annual Herb	8	0.1	0.1
* <i>Gladiolus caryophyllaceus</i>	Perennial Herb/Bulb	1	0.3	0.1
* <i>Hypochoeris glabra</i>	Annual Herb	50	0.1	1
* <i>Lysimachia arvensis</i>	Annual Herb	8	0.1	0.2
* <i>Medicago polymorpha</i>	Annual Herb	5	0.1	0.1
* <i>Pelargonium capitatum</i>	Perennial Herb	1	0.1	0.1
* <i>Poa annua</i>	Annual Grass	3	0.1	0.1
* <i>Solanum nigrum</i>	Annual Herb	1	0.2	0.1
* <i>Sonchus oleraceus</i>	Annual Herb	3	0.1	0.1

Quadrat No.: RF06
Survey Date: 21/09/2020
Personnel: SH, KS, LC
Latitude: Environment
Longitude: ally Sensitive
Location: Ranford
 Bushland
Topography: Flat
Aspect: North
Slope: 0%
Soil: Grey Sand
Rock: 0%
Leaf Litter: 0%
Bare Ground: 10%
Drainage: Moderate
Condition: Excellent

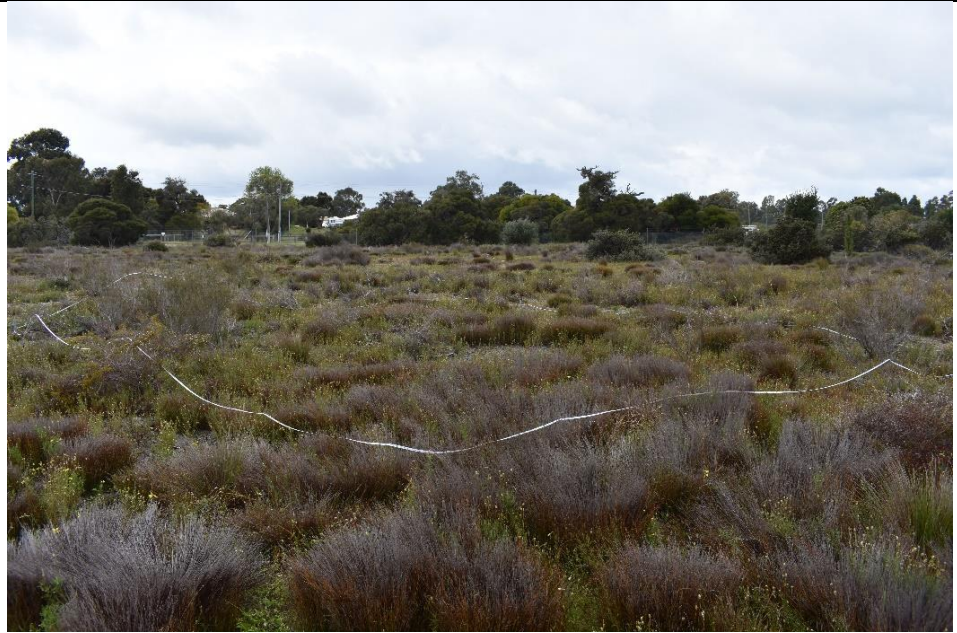


Vegetation Type: *Hypocalymma angustifolium* Shrubland

Native Species	Landform	Count	Height (m)	Cover (%)
<i>Adenanthos obovatus</i>	Shrub	1	1.5	0.5
<i>Calandrinia corrigioloides</i>	Annual Herb	10	0.1	0.5
<i>Conostylis juncea</i>	Perennial Herb	1	0.1	0.1
<i>Dampiera linearis</i>	Perennial Herb	4	0.1	0.1
<i>Dasyogon bromeliifolius</i>	Perennial Herb	100	0.5	80
<i>Desmocladius flexuosus</i>	Rush	1	0.1	0.1
<i>Hypocalymma angustifolium</i>	Shrub	34	0.5	25
<i>Hypolaena exsulca</i>	Rush	4	0.2	0.1
<i>Isolepis marginata</i>	Sedge	30	0.1	3
<i>Lomandra caespitosa</i>	Perennial Herb	1	0.2	0.1
<i>Lyginia imberbis</i>	Rush	32	0.5	6
<i>Pericalymma ellipticum</i>	Shrub	1	0.5	0.1
<i>Petrophile linearis</i>	Shrub	4	0.3	0.5
<i>Phlebocarya ciliata</i>	Perennial Herb	38	0.3	10
<i>Schoenus pedicellatus</i>	Sedge	29	0.5	5
<i>Scholtzia involucrata</i>	Shrub	12	0.3	3
<i>Senecio condylus</i>	Annual Herb	8	0.3	0.5
<i>Stylidium schoenoides</i>	Perennial Herb	1	0.1	0.1
<i>Thysanotus patersonii</i>	Perennial Herb	1	0.2	0.1
<i>Thysanotus thyrsoideus</i>	Perennial Herb	1	0.3	0.1
<i>Trachymene pilosa</i>	Annual Herb	41	0.1	0.1
<i>Waitzia suaveolens</i>	Annual Herb	6	0.5	1
<i>Xanthorrhoea brunonis</i>	Shrub	2	0.5	0.5

Weed Species	Landform	Count	Height (m)	Cover (%)
<i>*Aira cupaniana</i>	Annual Grass	5	0.1	0.1
<i>*Crassula alata</i>	Annual Herb	65	0.1	1
<i>*Ehrharta calycina</i>	Annual Grass	10	0.1	0.1
<i>*Gladiolus caryophyllaceus</i>	Perennial Herb/Bulb	5	0.3	0.1
<i>*Hypochaeris glabra</i>	Annual Herb	200	0.1	5
<i>*Leontodon rhagadioloides</i>	Annual Herb	1	0.1	0.1
<i>*Ursinia anthemoides</i> subsp. <i>anthemoides</i>	Annual Herb	120	0.3	2
<i>*Wahlenbergia capensis</i>	Annual Herb	5	0.2	0.1

Quadrat No.: RF07
Survey Date: 22/09/2020
Personnel: SH, LC
Latitude: Environment
Longitude: ally Sensitive
Location: Ranford
 Bushland
Topography: Flat
Aspect: Southeast
Slope: 1-3%
Soil: Grey Sand
Rock: 0%
Leaf Litter: 0%
Bare Ground: 8%
Drainage: Well
Condition: Good



Vegetation Type: Mixed Shrub Dampland

Native Species	Landform	Count	Height (m)	Cover (%)
<i>Astartea scoparia</i>	Shrub	9a, 1d	1	6
<i>Austrostipa compressa</i>	Perennial Grass	10	0.2	0.1
<i>Calandrinia corrigioloides</i>	Annual Herb	6	0.1	0.5
<i>Calandrinia granulifera</i>	Annual Herb	200	0.1	0.5
<i>Chaetospora curvifolia</i>	Sedge	1	0.1	0.1
<i>Hypolaena exsulca</i>	Rush	64	0.5	45
<i>Isolepis marginata</i>	Sedge	10	0.1	0.1
<i>Leucopogon conostephioides</i>	Shrub	1		
<i>Lomandra hermaphrodita</i>	Perennial Herb	2	0.1	0.1
<i>Lyginia imberbis</i>	Rush	4	0.5	0.5
<i>Microtis media</i> subsp. <i>media</i>	Perennial Herb	3	0.3	0.1
<i>Pericalymma ellipticum</i>	Shrub	3	0.5	2
<i>Podotheca angustifolia</i>	Annual Herb	7	0.1	0.1
<i>Quinetia urvillei</i>	Annual Herb	50	0.1	0.1
<i>Schoenus efoliatus</i>	Sedge	5	0.5	1
<i>Senecio condylus</i>	Annual Herb	11	0.2	0.1
<i>Trachymene pilosa</i>	Annual Herb	50	0.1	2
Weed Species	Landform	Count	Height (m)	Cover (%)
* <i>Arctotheca calendula</i>	Annual Herb	50	0.1	2
* <i>Brassica tournefortii</i>	Annual Herb	1	0.3	0.1
* <i>Crassula alata</i>	Annual Herb	100	0.1	0.5
* <i>Crassula glomerata</i>	Annual Herb	10	0.1	0.1
* <i>Disa bracteata</i>	Perennial Herb	1	0.2	0.1
* <i>Ehrharta longiflora</i>	Annual Herb	20	0.1	0.5
* <i>Geranium molle</i>	Annual Herb	3	0.1	0.1

Weed Species	Landform	Count	Height (m)	Cover (%)
<i>*Gladiolus caryophyllaceus</i>	Perennial Herb/Bulb	10	0.3	0.1
<i>*Hypochaeris glabra</i>	Annual Herb	150	0.1	10
<i>*Sonchus oleraceus</i>	Annual Herb	2	0.1	0.1
<i>*Ursinia anthemoides</i> subsp. <i>anthemoides</i>	Annual Herb	200	0.3	30
<i>*Vulpia myuros</i>	Annual Herb	10	0.2	0.1

Quadrat No.: RF08
Survey Date: 22/09/2020
Personnel: SH, LC
Latitude: Environment
Longitude: ally Sensitive
Location: Ranford
 Bushland
Topography: Flat
Aspect: Southeast
Slope: 1-3%
Soil: Grey Sand
Rock: 0%
Leaf Litter: 3%
Bare Ground: 1%
Drainage: Well
Condition: Very Good



Notes: Mixed Shrub Dampland

Native Species	Landform	Count	Height (m)	Cover (%)
<i>Calandrinia corrigioloides</i>	Annual Herb	18	0.1	0.1
<i>Calandrinia granulifera</i>	Annual Herb	20	0.1	0.1
<i>Chamaescilla corymbosa</i>	Perennial Herb	21	0.1	
<i>Conostylis juncea</i>	Perennial Herb	1	0.2	0.1
<i>Dasypogon bromeliifolius</i>	Perennial Herb	15	0.5	10
<i>Isolepis marginata</i>	Sedge	30	0.1	0.1
<i>Lyginia imberbis</i>	Rush	5	0.5	1
<i>Melaleuca seriata</i>	Shrub	1	0.4	0.1
<i>Phlebocarya ciliata</i>	Perennial Herb	200	0.5	90
<i>Poranthera microphylla</i>	Annual Herb	5	0.1	0.1
<i>Regelia inops</i>	Shrub	1	1.5	1
<i>Senecio condylus</i>	Annual Herb	13	0.3	0.3
<i>Xanthorrhoea brunonis</i>	Shrub	2	1	1
<i>Xanthorrhoea preissii</i>	Shrub	2	1	2
Weed Species	Landform	Count	Height (m)	Cover (%)
* <i>Arctotheca calendula</i>	Annual Herb	17	0.1	0.3
* <i>Avena barbata</i>	Annual Grass	7	0.2	0.1
* <i>Brassica tournefortii</i>	Annual Herb	12	0.3	0.3
* <i>Carpobrotus edulis</i>	Perennial Herb	1	0.1	0.1
* <i>Cotula turbinata</i>	Annual Herb	15	0.1	0.1
* <i>Crassula alata</i>	Annual Herb	20	0.1	0.1
* <i>Echium plantagineum</i>	Annual Herb	4	0.3	0.1
* <i>Ehrharta longiflora</i>	Annual Grass	1	0.1	0.1
* <i>Euphorbia peplus</i>	Annual Herb	400	0.2	8
* <i>Freesia alba x leichtlinii</i>	Perennial Herb/Bulb	7	0.1	0.1

Weed Species	Landform	Count	Height (m)	Cover (%)
* <i>Galium aparine</i>	Annual Herb	10	0.1	0.1
* <i>Geranium molle</i>	Annual Herb	60	0.1	2
* <i>Hypochaeris glabra</i>	Annual Herb	150	0.1	15
* <i>Medicago polymorpha</i>	Annual Herb	1	0.1	0.1
* <i>Petrorhagia dubia</i>	Annual Herb	100	0.3	1
* <i>Romulea rosea</i>	Perennial Herb	55	0.1	2
* <i>Silene gallica</i>	Annual Herb	40	0.2	1.5
* <i>Trifolium campestre</i>	Annual Herb	80	0.1	4
* <i>Urospermum picroides</i>	Annual Herb	20	0.1	0.5
* <i>Ursinia anthemoides</i> subsp. <i>anthemoides</i>	Annual herb	150	0.3	5
* <i>Wahlenbergia capensis</i>	Annual Herb	2	0.2	0.1

Quadrat No.: RF09
Survey Date: 21/09/2020
Personnel: SH, KS, LC
Latitude: Environment
ally Sensitive
Longitude: Environment
ally Sensitive
Location: Ranford
 Bushland
Topography: Flat
Aspect: Southeast
Slope: 0-3%
Soil: Black Sand
Rock: 0%
Leaf Litter: 0%
Bare Ground: 5%
Drainage: Moderate
Condition: Excellent



Vegetation Type: *Melaleuca preissiana* Open Woodland

Native Species	Landform	Count	Height (m)	Cover (%)
<i>Adenanthos obovatus</i>	Shrub	3	1	0.5
<i>Astartea scoparia</i>	Shrub	8	1	1
<i>Caladenia flava</i> subsp. <i>flava</i>	Perennial Herb	11	0.1	0.1
<i>Calandrinia granulifera</i>	Annual Herb	50	0.1	1
<i>Cassytha racemosa</i>	Perennial Herb	23	1.5	0.5
<i>Centrolepis drummondiana</i>	Annual Herb	4	0.1	0.1
<i>Dasypogon bromeliifolius</i>	Perennial Herb	50	0.3	20
<i>Euchilopsis linearis</i>	Shrub	2	0.5	0.5
<i>Hypocalymma angustifolium</i>	Shrub	33	1.5	70
<i>Hypolaena exsulca</i>	Rush	1	0.3	0.1
<i>Isolepis marginata</i>	Sedge	32	0.1	0.1
<i>Lomandra caespitosa</i>	Perennial Herb	1	0.2	0.1
<i>Lyginia imberbis</i>	Rush	7	0.3	2
<i>Melaleuca preissiana</i>	Tree	0	8	10
<i>Phlebocarya ciliata</i>	Perennial Herb	12	0.3	3
<i>Phyllangium paradoxum</i>	Annual Herb	3	0.1	0.1
<i>Poranthera microphylla</i>	Annual Herb	2	0.2	0.2
<i>Regelia inops</i>	Shrub	3	1.5	4
<i>Senecio condylus</i>	Annual Herb	3	0.2	0.1
<i>Trachymene pilosa</i>	Annual Herb	4	0.1	1
<i>Wahlenbergia preissii</i>	Annual Herb	5	0.1	0.1
Weed Species	Landform	Count	Height (m)	Cover (%)
* <i>Aira cupaniana</i>	Annual Grass	10	0.1	0.1
* <i>Briza maxima</i>	Annual Grass	1	0.2	0.1
* <i>Crassula alata</i>	Annual Herb	65	0.1	0.1

Weed Species	Landform	Count	Height (m)	Cover (%)
<i>*Ehrharta calycina</i>	Perennial Grass	3	0.3	0.1
<i>*Galium aparine</i>	Annual Herb	10	0.3	3
<i>*Gladiolus caryophyllaceus</i>	Perennial Herb/Bulb	1	0.3	0.1
<i>*Hypochaeris glabra</i>	Annual Herb	120	0.1	15
<i>*Lysimachia arvensis</i>	Annual Herb	1	0.2	0.1
<i>*Stachys arvensis</i>	Annual Herb	1	0.1	0.1
<i>*Ursinia anthemoides</i> subsp. <i>anthemoides</i>	Annual Herb	15	0.1	0.1
<i>*Vulpia myuros</i>	Annual Grass	10	0.2	0.1

Quadrat No.: RF10
Survey Date: 21/09/2020
Personnel: SH, KS, LC
Latitude: Environment
Longitude: ally Sensitive
Location: Ranford
 Bushland
Topography: Flat
Aspect: Southeast
Slope: 0%
Soil: Loamy Sand
Rock: 0%
Leaf Litter: 4%
Bare Ground: 1%
Drainage: Moderate
Condition: Good



Notes: *Melaleuca preissiana* Open Woodland

Native Species	Landform	Count	Height (m)	Cover (%)
<i>Acacia saligna</i>	Shrub	1	0.1	0.1
<i>Astartea scoparia</i>	Shrub	9	0.5	2
<i>Caladenia flava</i> subsp. <i>flava</i>	Perennial Herb	8	0.1	0.1
<i>Cassytha glabella</i>	Perennial Herb	1	0.1	0.1
<i>Kennedia prostrata</i>	Shrub	1	0.1	0.1
<i>Lepidosperma longitudinale</i>	Sedge	200	0.5	40
<i>Melaleuca preissiana</i>	Tree	1	12	80
<i>Podotheca angustifolia</i>	Annual Herb	6	0.1	0.1
<i>Pterostylis vittata</i>	Perennial Herb	2	0.1	0.1
<i>Quinetia urvillei</i>	Annual Herb	100	0.1	1
<i>Regelia ciliata</i>	Shrub	1	1.5	2
<i>Senecio condylus</i>	Annual Herb	4	0.3	0.1
<i>Trachymene pilosa</i>	Annual Herb	50	0.2	0.5
Weed Species	Landform	Count	Height (m)	Cover (%)
* <i>Arctotheca calendula</i>	Annual Herb	30	0.1	1
* <i>Brassica tournefortii</i>	Annual Herb	15	0.3	1
* <i>Cotula turbinata</i>	Annual Herb	200	0.1	10
* <i>Ehrharta longiflora</i>	Annual Grass	10	0.1	0.5
* <i>Euphorbia peplus</i>	Annual Herb	140	0.1	5
* <i>Euphorbia terracina</i>	Perennial Herb	1	0.2	0.1
* <i>Fumaria capreolata</i>	Annual Herb	1	0.3	0.1
* <i>Galium aparine</i>	Annual Herb	500	0.1	60
* <i>Geranium molle</i>	Annual Herb	2	0.1	0.1
* <i>Gladiolus caryophyllaceus</i>	Perennial Herb/Bulb	4	0.3	0.1
* <i>Hypochaeris radicata</i>	Annual Herb	30	0.1	0.5
* <i>Lotus angustissimus</i>	Annual Herb	3	0.1	0.1

Weed Species	Landform	Count	Height (m)	Cover (%)
<i>*Lysimachia arvensis</i>	Annual Herb	10	0.2	0.1
<i>*Medicago polymorpha</i>	Annual Herb	3	0.1	0.1
<i>*Oxalis pes-caprae</i>	Perennial Herb	20	0.1	1
<i>*Petrorhagia dubia</i>	Annual Herb	5	0.1	0.1
<i>*Romulea rosea</i>	Perennial Herb	15	0.1	0.1
<i>*Silene gallica</i>	Annual Herb	30	0.2	0.5
<i>*Solanum nigrum</i>	Annual Herb	10	0.2	0.5
<i>*Sonchus oleraceus</i>	Annual Herb	15	0.2	0.3
<i>*Stellaria media</i>	Annual Herb	10	0.1	0.5
<i>*Trifolium campestre</i>	Annual Herb	10	0.1	0.1
<i>*Urospermum picroides</i>	Annual Herb	1	0.1	0.1
<i>*Ursinia anthemoides</i> subsp. <i>anthemoides</i>	Annual Herb	110	0.3	5
<i>*Wahlenbergia capensis</i>	Annual Herb	1	0.1	0.1

Quadrat No.: RF11
Survey Date: 21/09/2020
Personnel: SH, LC
Latitude: Environment
ally Sensitive
Longitude: Environment
ally Sensitive
Location: Ranford
 Bushland
Topography: Flat
Aspect: Southeast
Slope: 0%
Soil: Loamy Sand
Rock: 0%
Leaf Litter: 0%
Bare Ground: 3%
Drainage: Moderate
Condition: Good



Vegetation Type: *Melaleuca preissiana* Open Woodland

Native Species	Landform	Count	Height (m)	Cover (%)
<i>Austrostipa compressa</i>	Perennial Grass	1	0.1	0.1
<i>Banksia littoralis</i>	Tree	1	4	1
<i>Caladenia flava</i> subsp. <i>flava</i>	Perennial Herb	13	0.1	0.1
<i>Calandrinia corrigioloides</i>	Annual Herb	2	0.1	0.1
<i>Centrolepis drummondiana</i>	Annual Herb	10	0.1	0.1
<i>Dasypogon bromeliifolius</i>	Perennial Herb	1	0.5	1
<i>Hypolaena exsulca</i>	Rush	2	0.1	0.5
<i>Lagenophora huegelii</i>	Annual Herb	30	0.1	0.5
<i>Lepidosperma longitudinale</i>	Sedge	400	0.5	60
<i>Melaleuca preissiana</i>	Tree	5	6	20
<i>Podotheca angustifolia</i>	Annual Herb	1	0.1	0.1
<i>Quinetia urvillei</i>	Annual Herb	200	0.2	3
<i>Regelia ciliata</i>	Shrub	0	1	4
<i>Rhodanthe citrina</i>	Annual Herb	20	0.1	0.1
<i>Schoenus efoliatus</i>	Sedge	1d, 2a	0.3	0.1
<i>Senecio condylus</i>	Annual Herb	10	0.2	0.1
<i>Trachymene pilosa</i>	Annual Herb	50	0.1	0.5
Weed Species	Landform	Count	Height (m)	Cover (%)
* <i>Aira cupaniana</i>	Annual Grass	20	0.1	0.1
* <i>Arctotheca calendula</i>	Annual Herb	100	0.2	5
* <i>Briza minor</i>	Annual Grass	10	0.1	0.1
* <i>Carpobrotus edulis</i>	Perennial Herb	1	0.1	0.1
* <i>Crassula alata</i>	Annual Herb	200	0.1	1
* <i>Ehrharta longiflora</i>	Annual Herb	12	0.1	0.2
* <i>Galium murale</i>	Annual Herb	12	0.1	0.1

Weed Species	Landform	Count	Height (m)	Cover (%)
<i>*Geranium molle</i>	Annual Herb	2	0.1	0.1
<i>*Gladiolus caryophyllaceus</i>	Perennial Herb/Bulb	2	0.5	0.1
<i>*Hypochaeris glabra</i>	Annual Herb	100	0.1	3
<i>*Lotus angustissimus</i>	Annual Herb	1	0.1	0.1
<i>*Lysimachia arvensis</i>	Annual Herb	10	0.1	0.1
<i>*Romulea rosea</i>	Perennial Herb	3	0.1	0.1
<i>*Ursinia anthemoides</i> subsp. <i>anthemoides</i>	Annual Herb	200	0.2	5
<i>*Zantedeschia aethiopica</i>	Perennial Herb/Bulb	1	0.2	0.1

Quadrat No.: RF12
Survey Date: 22/09/2020
Personnel: SH, LC
Latitude: Environment
ally Sensitive
Longitude: Environment
ally Sensitive
Location: Ranford
 Bushland
Topography: Mid Slope
Aspect: Southeast
Slope: 1-3%
Soil: Grey Sand
Rock: 0%
Leaf Litter: 0%
Bare Ground: 7%
Drainage: Well
Condition: Very Good



Vegetation Type: *Hypocalymma angustifolium* Shrubland

Native Species	Landform	Count	Height (m)	Cover (%)
<i>Adenanthos obovatus</i>	Shrub	4	1	2
<i>Austrostipa compressa</i>	Perennial Grass	1	0.1	0.1
<i>Caladenia flava</i> subsp. <i>flava</i>	Perennial Herb	2	0.1	0.1
<i>Calandrinia corrigioloides</i>	Annual Herb	40	0.1	0.5
<i>Chaetospora curvifolia</i>	Sedge	4	0.2	0.5
<i>Desmocladius flexuosus</i>	Rush	1	0.1	0.1
<i>Hibbertia racemosa</i>	Shrub	6	0.3	1
<i>Hypocalymma angustifolium</i>	Shrub	8	1	6
<i>Isolepis marginata</i>	Sedge	30	0.1	0.1
<i>Lomandra caespitosa</i>	Perennial Herb	1	0.3	0.1
<i>Lyginia imberbis</i>	Rush	25	0.3	5
<i>Melaleuca seriata</i>	Shrub	16		20
<i>Millotia myosotidifolia</i>	Annual Herb	6	0.1	0.1
<i>Phlebocarya ciliata</i>	Perennial Herb	200	0.3	70
<i>Phyllangium paradoxum</i>	Annual Herb	10	0.1	0.1
<i>Quinetia urvillei</i>	Annual Herb	1	0.1	0.1
<i>Senecio condylus</i>	Annual Herb	7	0.2	0.1
<i>Trachymene pilosa</i>	Annual Herb	80	0.1	2
<i>Wahlenbergia preissii</i>	Annual Herb	20	0.2	0.1
<i>Waitzia suaveolens</i>	Annual Herb	8	0.1	0.1
Weed Species	Landform	Count	Height (m)	Cover (%)
* <i>Aira cupaniana</i>	Annual Grass	20	0.1	0.1
* <i>Arctotheca calendula</i>	Annual Herb	6	0.1	0.2
* <i>Brassica tournefortii</i>	Annual Herb	5	0.1	0.1
* <i>Briza maxima</i>	Annual Grass	30	0.2	0.5
* <i>Carpobrotus edulis</i>	Perennial Herb	3	0.1	0.1

Weed Species	Landform	Count	Height (m)	Cover (%)
* <i>Crassula alata</i>	Annual Herb	50	0.1	0.5
* <i>Geranium molle</i>	Annual Herb	7		0.1
* <i>Gladiolus caryophyllaceus</i>	Perennial Herb/Bulb	10	0.1	0.1
* <i>Hypochaeris glabra</i>	Annual Herb	240	0.1	40
* <i>Lysimachia arvensis</i>	Annual Herb	75	0.1	2
* <i>Medicago polymorpha</i>	Annual Herb	10	0.1	0.1
* <i>Pelargonium capitatum</i>	Perennial Herb	1	0.1	0.1
* <i>Silene gallica</i>	Annual Herb	1	0.1	0.1
* <i>Trifolium campestre</i>	Annual Herb	10	0.1	0.1
* <i>Ursinia anthemoides</i> subsp. <i>anthemoides</i>	Annual Herb	200	0.2	15

Quadrat No.: RF13

Survey Date: 22/09/2020

Personnel: SH, LC

Latitude: **Environmentally Sensitive**

Longitude:

Location: Ranford
Bushland

Topography: Flat

Aspect: Southeast

Slope: 0%

Soil: Grey Sand

Rock: 0%

Leaf Litter: 0%

Bare Ground: 30%

Drainage: Well

Condition: Good



Vegetation Type: Mixed Dampland Shrubs

X

Native Species	Landform	Count	Height (m)	Cover (%)
<i>Banksia attenuata</i>	Tree	1	2.5	5
<i>Beaufortia elegans</i>	Shrub	3a 2d	1	1
<i>Caladenia flava</i>	Perennial Herb	1	0.2	0.1
<i>Calandrinia corrigioloides</i>	Annual Herb	50	0.1	0.5
<i>Calandrinia granulifera</i>	Annual Herb	100	0.1	0.5
<i>Centrolepis drummondiana</i>	Annual Herb	2	0.1	0.1
<i>Hypolaena exsulca</i>	Rush	10	0.3	8
<i>Isolepis marginata</i>	Sedge	4	0.1	0.1
<i>Lyginia imberbis</i>	Rush	10	0.5	5
<i>Melaleuca seriata</i>	Shrub	6	1	5
<i>Patersonia occidentalis</i>	Perennial Herb	13	0.5	5
<i>Pericalymma ellipticum</i>	Shrub	1	0.5	0.1
<i>Phlebocarya ciliata</i>	Perennial Herb	7	0.5	4
<i>Podotheca angustifolia</i>	Annual Herb	12	0.1	0.1
<i>Quinetia urvillei</i>	Annual Herb	10	0.1	0.1
<i>Regelia inops</i>	Shrub	1	0.3	0.1
<i>Rhodanthe citrina</i>	Annual Herb	1	0.1	0.1
<i>Siloxerus humifusus</i>	Annual Herb	10	0.1	0.1
<i>Trachymene pilosa</i>	Annual Herb	74	0.1	2
Weed Species	Landform	Count	Height (m)	Cover (%)
* <i>Arctotheca calendula</i>	Annual Herb	6	0.1	0.1
* <i>Carpobrotus edulis</i>	Perennial Herb	20	0.2	10
* <i>Gladiolus caryophyllaceus</i>	Perennial Herb/Bulb	10	0.3	0.1
* <i>Hypochaeris glabra</i>	Annual Herb	220	0.1	15
* <i>Ursinia anthemoides</i> subsp. <i>anthemoides</i>	Annual Herb	400	0.3	25
* <i>Vulpia myuros</i>	Annual Grass	3	0.1	0.1