

Boxwood Blight

Volutella Blight

Colletotrichum
Dieback

Root Disease

Leafminers

Other Boxwood
Problems

Comparison of Boxwood Blight to other Boxwood Problems

Boxwood Blight

Volutella Blight

Colletotrichum
Dieback

Root Disease

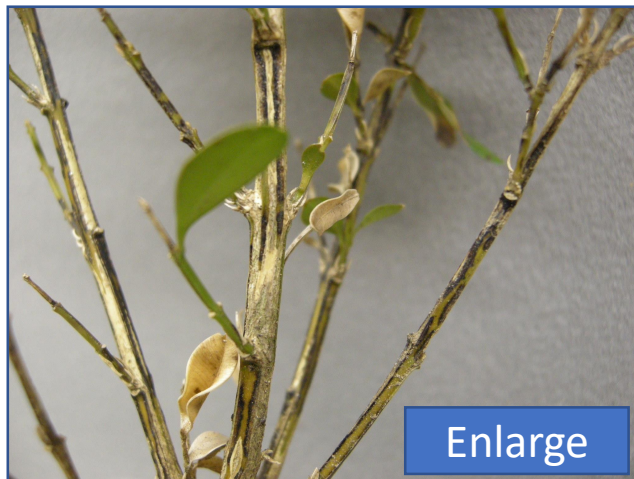
Leafminers

Other Boxwood
Problems

Boxwood Blight



Tan leaf spots with darker border



Black streaks on green stems and leaf drop



Leaf browning and sudden, severe leaf drop



White, star-shaped spore clusters (only visible with magnification and often not present on infected plants)

Boxwood Blight

Volutella Blight

Colletotrichum
Dieback

Root Disease

Leafminers

Other Boxwood
Problems

Volutella Blight



Brown leaves do not drop



Volutella spore masses turn salmon pink at maturity; sometimes blackening of stem may occur



Leaves tend to remain on stems



Volutella spore masses are white at first and may resemble spores of the boxwood blight pathogen early in development

Colletotrichum Dieback

Boxwood Blight

Volutella Blight

Colletotrichum Dieback

Root Disease

Leafminers

Other Boxwood Problems



Enlarge

Blackening of stems due to *Colletotrichum* dieback



Enlarge

Close-up of black fruiting bodies of *Colletotrichum theobromicola* on stem



Enlarge

Sectional dieback of boxwood due to *Colletotrichum* dieback; leaves remain attached to stem (photo by Raj Singh)



Enlarge

Black fruiting bodies of *Colletotrichum theobromicola* on leaves and stems



Enlarge

Black discoloration under bark caused by *C. theobromicola* (photo by Raj Singh)

Boxwood Blight

Volutella Blight

Colletotrichum Dieback

Root Disease

Leafminers

Other Boxwood Problems

Root Disease



Rot of fibrous roots due to Phytophthora root rot

Enlarge



Enlarge

Dieback on English boxwood due to English boxwood decline, a root disease; leaves remain attached to stems until late in disease development



Enlarge

Dieback due to root damage from plant parasitic nematodes; leaves remain attached

Early symptoms of root disease: off-color leaves



Enlarge

Boxwood Blight

Volutella Blight

Colletotrichum
Dieback

Root Disease

Leafminers

Other Boxwood
Problems

Leafminers



Enlarge

Yellowing and scattered leaf drop
due to leafminer damage



Enlarge

Blisters and yellow spots on lower leaf surface



Enlarge

Yellow spots on upper leaf surface



Enlarge

Characteristic orange larvae of the boxwood
leafminer can be seen after peeling away the
epidermis from lower leaf surface of a blistered area

Other Boxwood Problems

Boxwood Blight

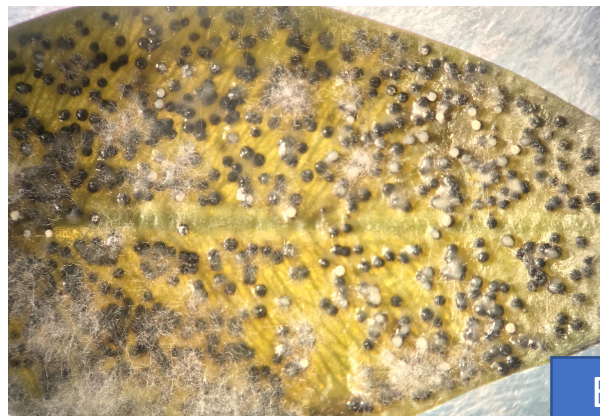
Volutella Blight

Colletotrichum Dieback

Root Disease

Leafminers

Other Boxwood Problems



Fruiting bodies of the fungus *Macrophoma candollei*, a secondary pathogen on dead boxwood leaves

Enlarge



Cold/winter injury: damage often appears at the top of the plant and follows a temperature drop

Enlarge



Cold/winter injury: Sometimes damage is scattered on the plant; plants are healthy going into winter or prior to a temperature drop, but browning appears following cold period

Enlarge

Boxwood Blight

Volutella Blight

Colletotrichum
Dieback

Root Disease

Leafminers

Other Boxwood
Problems



Black streaks on green stems and leaf drop



Boxwood Blight

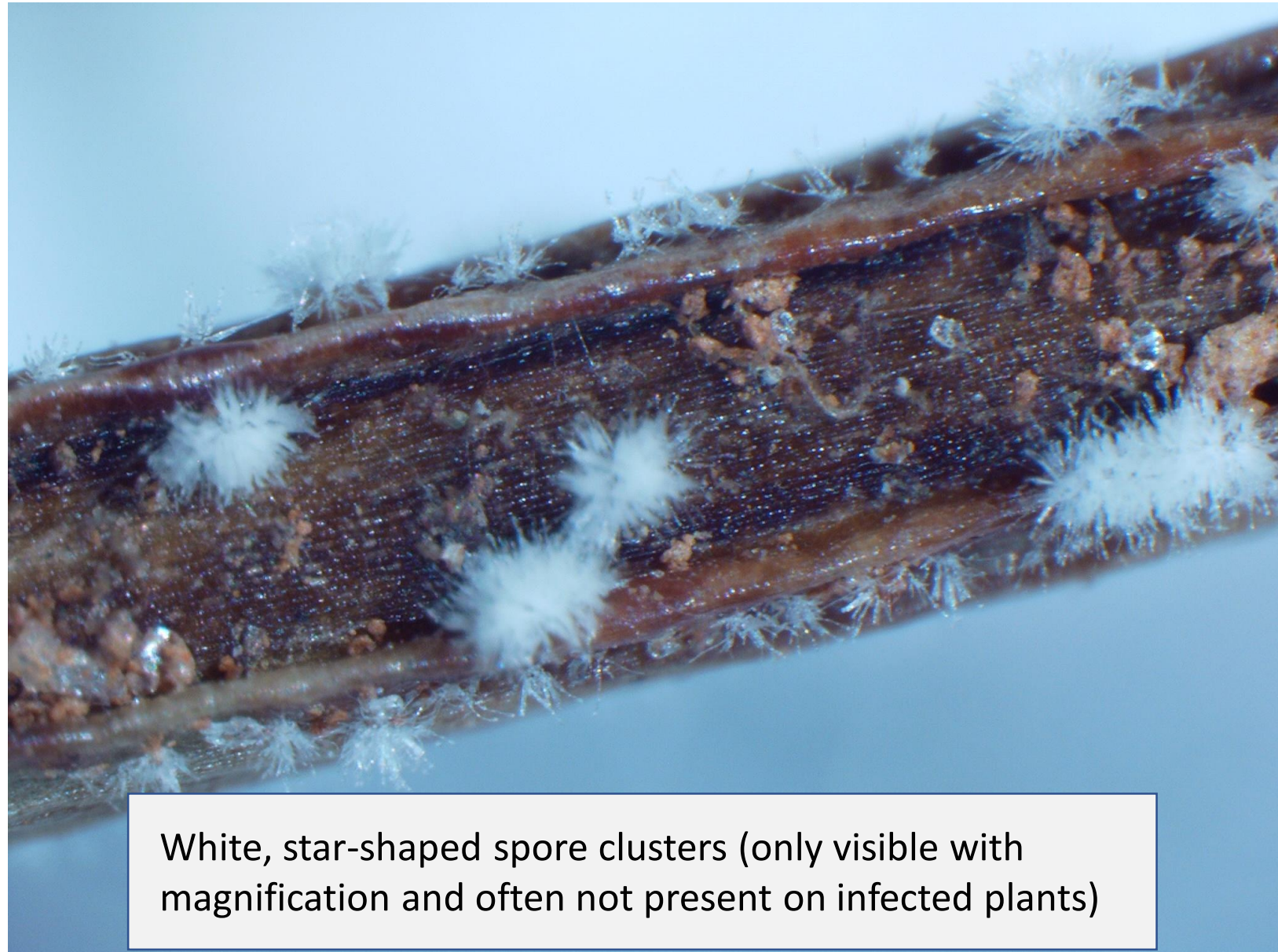
Volutella Blight

Colletotrichum
Dieback

Root Disease

Leafminers

Other Boxwood
Problems



White, star-shaped spore clusters (only visible with magnification and often not present on infected plants)



Boxwood Blight

Volutella Blight

Colletotrichum
Dieback

Root Disease

Leafminers

Other Boxwood
Problems



Tan leaf spots with darker border



Boxwood Blight

Volutella Blight

Colletotrichum
Dieback

Root Disease

Leafminers

Other Boxwood
Problems



Leaf browning and sudden, severe leaf drop



Boxwood Blight

Volutella Blight

Colletotrichum
Dieback

Root Disease

Leafminers

Other Boxwood
Problems



Brown leaves do not drop



Boxwood Blight

Volutella Blight

Colletotrichum
Dieback

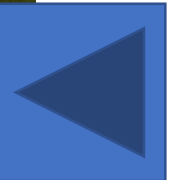
Root Disease

Leafminers

Other Boxwood
Problems



Volutella spore masses turn salmon pink at maturity; sometimes blackening of stem may occur



Boxwood Blight

Volutella Blight

Colletotrichum
Dieback

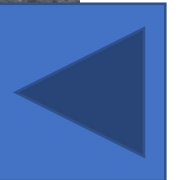
Root Disease

Leafminers

Other Boxwood
Problems



Leaves tend to remain on stems



Boxwood Blight

Volutella Blight

Colletotrichum
Dieback

Root Disease

Leafminers

Other Boxwood
Problems

Volutella spore masses are white at first and may resemble spores of the boxwood blight pathogen early in development



Boxwood Blight

Volutella Blight

Colletotrichum
Dieback

Root Disease

Leafminers

Other Boxwood
Problems



Blackening of stems due to
Colletotrichum dieback



Boxwood Blight

Volutella Blight

Colletotrichum
Dieback

Root Disease

Leafminers

Other Boxwood
Problems



Close-up of black fruiting bodies of
Colletotrichum theobromicola on stem



Boxwood Blight

Volutella Blight

Colletotrichum
Dieback

Root Disease

Leafminers

Other Boxwood
Problems



Black fruiting bodies of *Colletotrichum theobromicola* on leaves and stems



Boxwood Blight

Volutella Blight

Colletotrichum
Dieback

Root Disease

Leafminers

Other Boxwood
Problems



Sectional dieback of boxwood
due to *Colletotrichum* dieback;
leaves remain attached to stem
(photo by Raj Singh)



Boxwood Blight

Volutella Blight

Colletotrichum
Dieback

Root Disease

Leafminers

Other Boxwood
Problems



Black discoloration under bark
caused by *C. theobromicola*
(photo by Raj Singh)



Boxwood Blight

Volutella Blight

Colletotrichum
Dieback

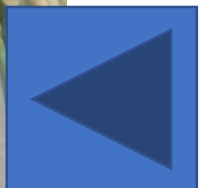
Root Disease

Leafminers

Other Boxwood
Problems



Blisters and yellow spots on lower leaf surface



Boxwood Blight

Volutella Blight

Colletotrichum
Dieback

Root Disease

Leafminers

Other Boxwood
Problems

Yellow spots on upper leaf surface



Boxwood Blight

Volutella Blight

Colletotrichum
Dieback

Root Disease

Leafminers

Other Boxwood
Problems



Yellowing and scattered leaf drop due
to leafminer damage



Boxwood Blight

Volutella Blight

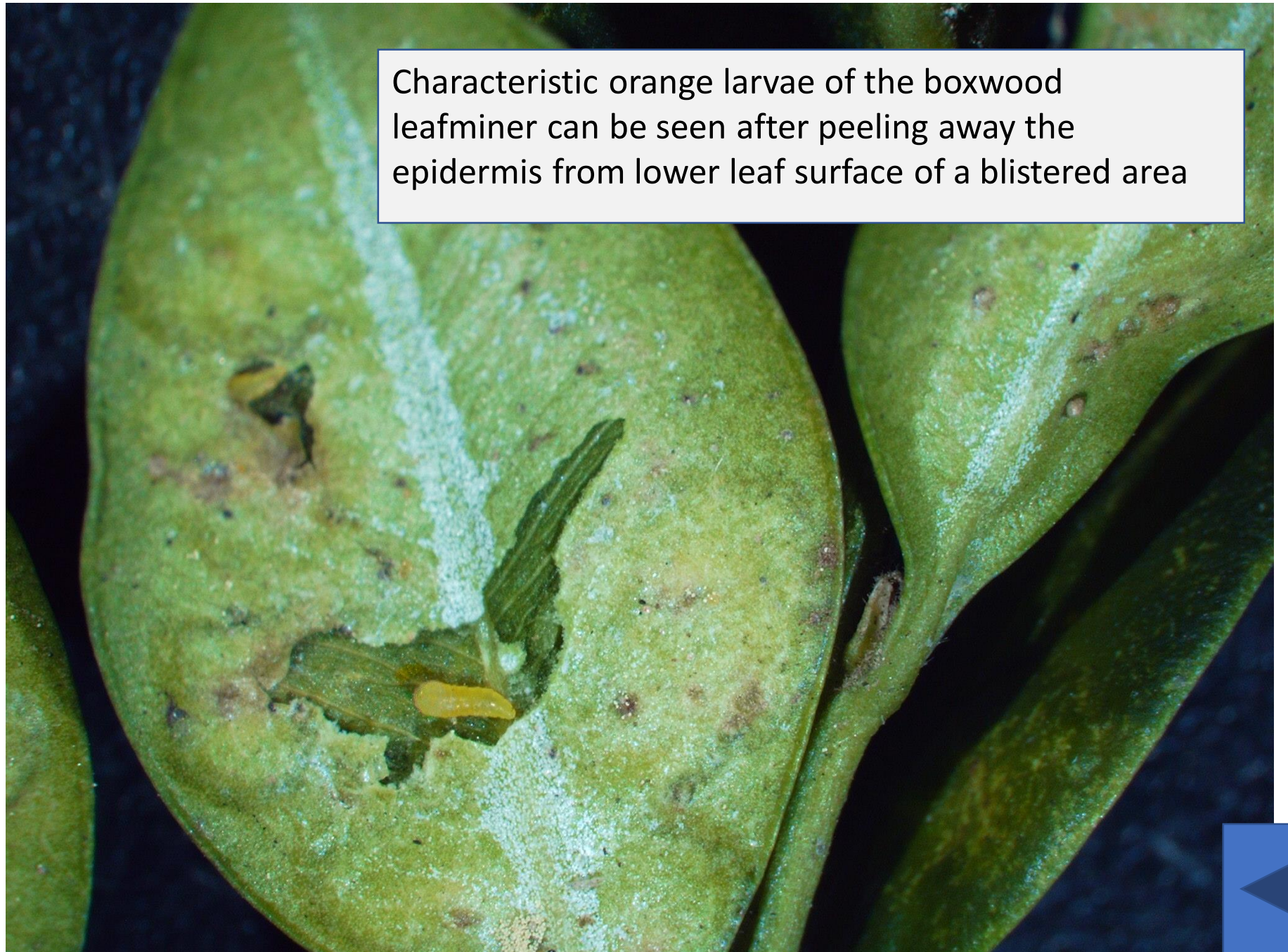
Colletotrichum
Dieback

Root Disease

Leafminers

Other Boxwood
Problems

Characteristic orange larvae of the boxwood leafminer can be seen after peeling away the epidermis from lower leaf surface of a blistered area



Boxwood Blight

Volutella Blight

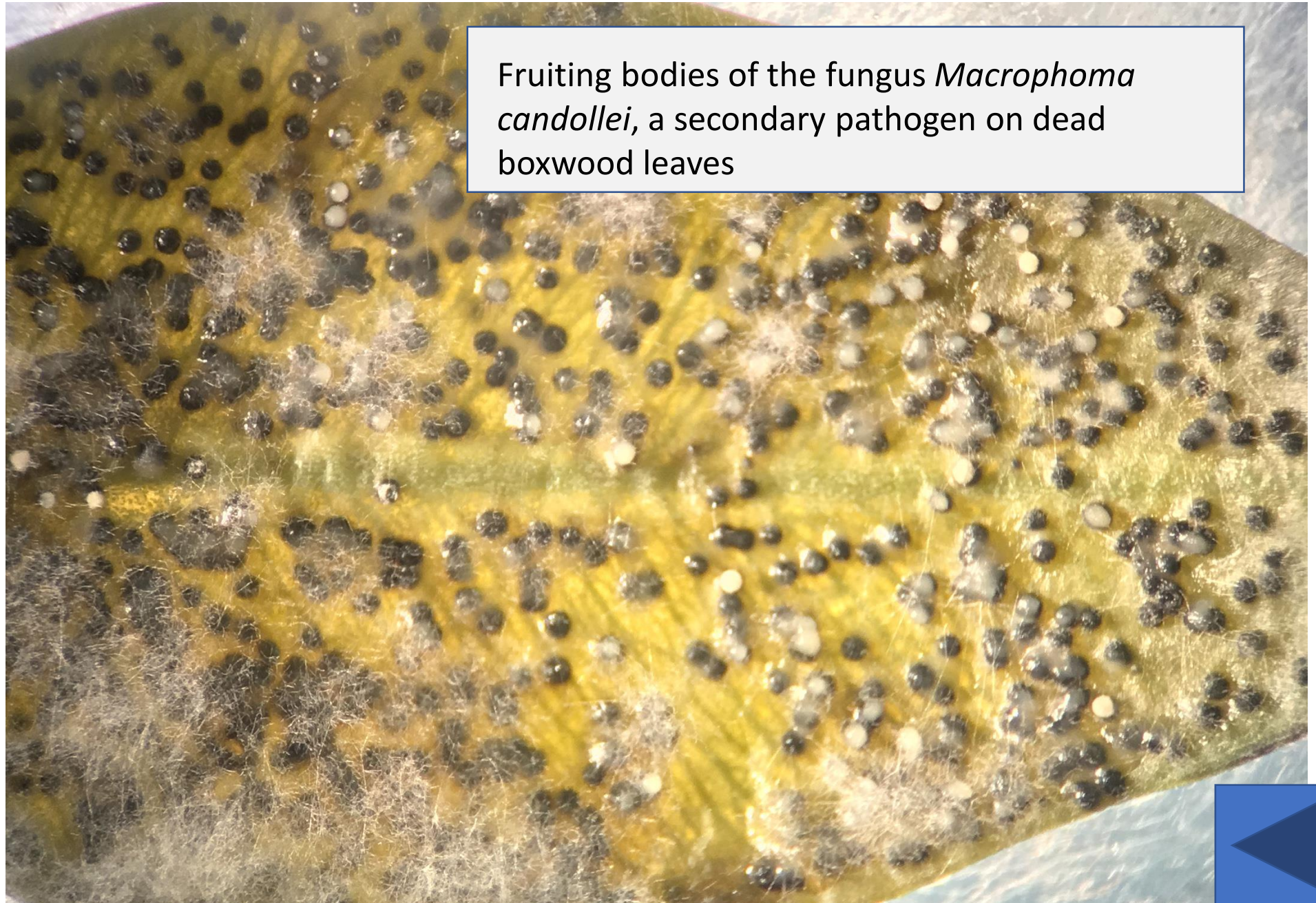
Colletotrichum
Dieback

Root Disease

Leafminers

Other Boxwood
Problems

Fruiting bodies of the fungus *Macrophoma candollei*, a secondary pathogen on dead boxwood leaves



Boxwood Blight

Volutella Blight

Colletotrichum
Dieback

Root Disease

Leafminers

Other Boxwood
Problems

Cold/winter injury: Sometimes damage is scattered on the plant; plants are healthy going into winter or prior to a temperature drop, but browning appears following cold period



Boxwood Blight

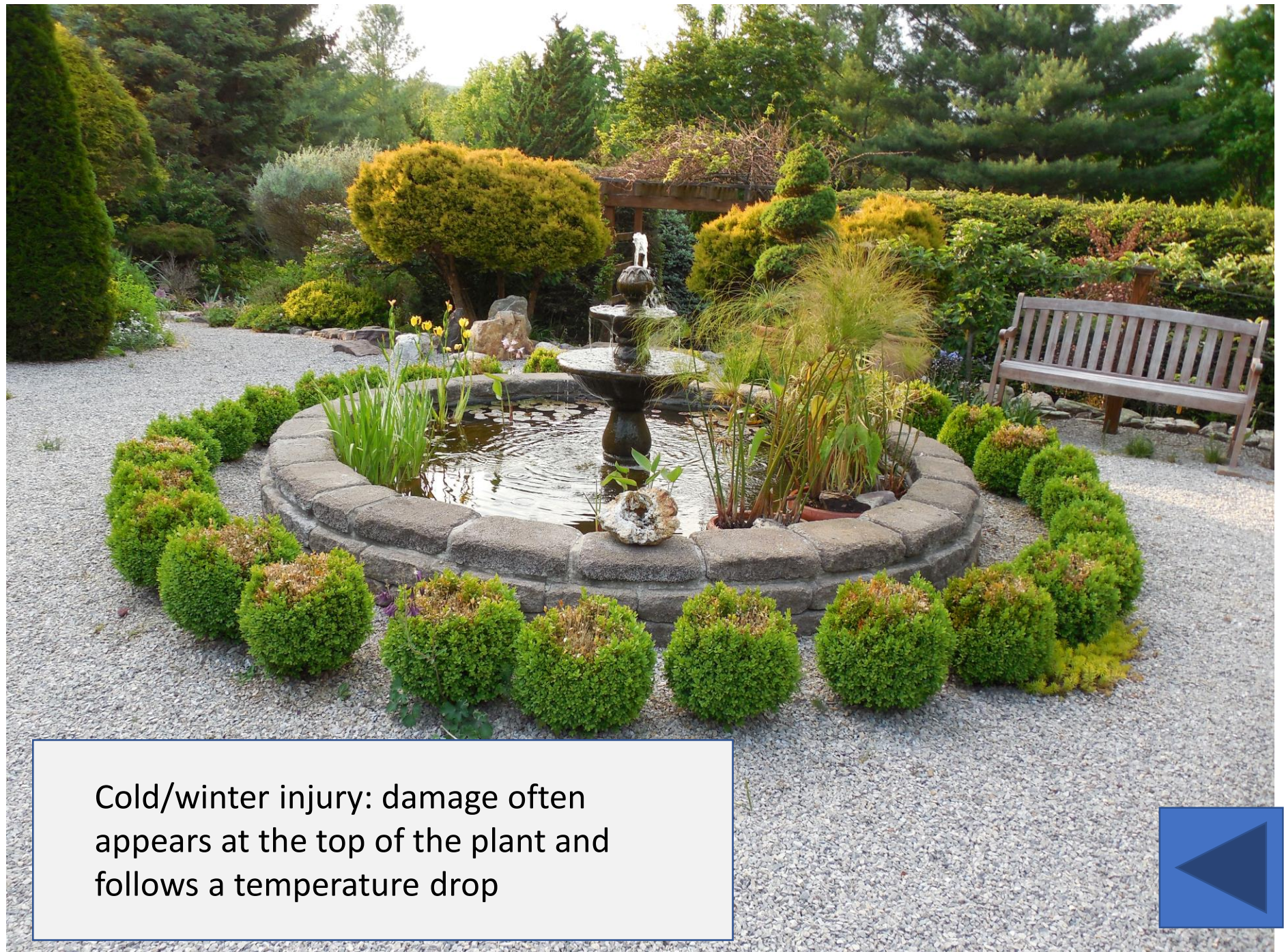
Volutella Blight

Colletotrichum
Dieback

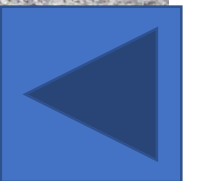
Root Disease

Leafminers

Other Boxwood
Problems



Cold/winter injury: damage often appears at the top of the plant and follows a temperature drop



Boxwood Blight

Volutella Blight

Colletotrichum
Dieback

Root Disease

Leafminers

Other Boxwood
Problems



Rot of fibrous roots due to
Phytophthora root rot



Boxwood Blight

Volutella Blight

Colletotrichum
Dieback

Root Disease

Leafminers

Other Boxwood
Problems



Dieback due to root damage from plant parasitic nematodes; leaves remain attached



Boxwood Blight

Volutella Blight

Colletotrichum
Dieback

Root Disease

Leafminers

Other Boxwood
Problems

Dieback on English boxwood due to English boxwood decline, a root disease; leaves remain attached to stems until late in disease development



Boxwood Blight

Volutella Blight

Colletotrichum
Dieback

Root Disease

Leafminers

Other Boxwood
Problems

Early symptoms of root disease: off-color leaves

