

# Turf & Roadside Plant Identification

Dennis Martin, Turfgrass Specialist



EXTENSION



# Where can I go to get help in plant id?

## People

- Your industry sales & technical reps
- Oklahoma State University
  - Your OSU County Extension Office
  - OSU State turf, range, pasture specialists

Noble Foundation – Ardmore

County NRCS/FSA Office

# Weeds of the West - 11<sup>th</sup> Edition, 2012 – free pdf

The screenshot shows a web browser window with the URL [http://www.wyoextension.org/publications/Search\\_Details.php?pubid=696&pub=WSWS](http://www.wyoextension.org/publications/Search_Details.php?pubid=696&pub=WSWS). The browser's address bar and menu bar are visible. The website header includes the University of Wyoming logo and navigation links: A-Z Index, Calendar, Give to UW, People, WyoWeb, and a search bar. Below the header is a navigation bar with links for ADMISSIONS, ACADEMICS, ATHLETICS, RESEARCH, UW LIFE, and UW PRIDE. The main content area is titled 'Communications and Technology | University of Wyoming Extension'. On the left, there is a sidebar with a 'UNIVERSITY OF WYOMING EXTENSION' logo and a list of links: Ask an Expert, County Offices, Programs, Publications, News, Calendar, Personnel Directory, About UW Extension, Employment Opportunities, and Employee Login. Below this is a 'CONTACT US' section with the following information: University of Wyoming Extension, Department #3354, 1000 E. University Ave., Laramie, WY 82071, Phone: (307) 766-5124. The main content area features a 'Publications - Details' section for 'Weeds of the West'. It includes a book cover image, the title 'Weeds of the West', and the following details: Publication #: WSWS-I, Date Published: 2012, and Publication Author(s): Thomas Whitson. To the right of the details are icons for 'New Search', 'PDF', and 'EPUB'. Below the details is a 'Description' section with the following text: Learning to identify unwanted plants around the home, farm, or ranch will be much easier with a book published by the Western Society of Weed Science and cosponsored by Cooperative Extension of the Western States. Weeds of the West is an extensive publication which can help you identify plants that compete with native plants, horticultural and agricultural crops as well as those that can poison livestock and people. This extensive, easy-to-use guide contains more than 900 color photographs showing the early growth stages, mature plants and features for positive identification of each weed discussed. Descriptions, habitats and characteristics of each plant are also in this 650 page book. Identification, habitats and characteristics of 350 species from western U.S., including Hawaii. 1200 color photos, 628 pages, softbound, 6" x 9". At the bottom of the page, there is a 'Printing Problems?' section with the following text: If your pdf is printing with odd characters, save the file to your computer. Open the file with Adobe Reader. The file should now print correctly. If you are still having problems, please, contact us at Publications Support or call (307) 766-2115. The browser's taskbar at the bottom shows various application icons and the system clock indicating 6:53 AM on 9/15/2017.

http://www.wyoextension.org/publications/Search\_Details.php?pubid=696&pub=WSWS Weeds of the West | Comm...

File Edit View Favorites Tools Help

x Convert Select

A-Z Index // Calendar // Give to UW // People // WyoWeb Search UW Website

ADMISSIONS ACADEMICS ATHLETICS RESEARCH UW LIFE UW PRIDE

Communications and Technology | University of Wyoming Extension

UNIVERSITY OF WYOMING EXTENSION

Ask an Expert  
County Offices  
Programs  
Publications  
News  
Calendar  
Personnel Directory  
About UW Extension  
Employment Opportunities  
Employee Login

CONTACT US

University of Wyoming Extension  
Department #3354  
1000 E. University Ave.  
Laramie, WY 82071  
Phone: (307) 766-5124

**Publications - Details**

**Weeds of the West**

**Publication #:** WSWS-I  
**Date Published:** 2012  
**Publication Author(s):**  
Thomas Whitson

**New Search**

PDF  
EPUB

**Description:**  
Learning to identify unwanted plants around the home, farm, or ranch will be much easier with a book published by the Western Society of Weed Science and cosponsored by Cooperative Extension of the Western States. Weeds of the West is an extensive publication which can help you identify plants that compete with native plants, horticultural and agricultural crops as well as those that can poison livestock and people. This extensive, easy-to-use guide contains more than 900 color photographs showing the early growth stages, mature plants and features for positive identification of each weed discussed. Descriptions, habitats and characteristics of each plant are also in this 650 page book. Identification, habitats and characteristics of 350 species from western U.S., including Hawaii. 1200 color photos, 628 pages, softbound, 6" x 9"

**Printing Problems?** If your pdf is printing with odd characters, save the file to your computer. Open the file with Adobe Reader. The file should now print correctly. If you are still having problems, please, contact us at [Publications Support](#) or call (307) 766-2115.

6:53 AM  
9/15/2017



# Weeds of the West

- From Univ of WY Press
- Phone: (307) 766-5124\_  
Email: [glen@uwyo.edu](mailto:glen@uwyo.edu)
- Free pdf from: [bit.ly/weedswest](http://bit.ly/weedswest)

# Weeds of Southern Turfgrasses

The screenshot shows a web browser window displaying the IFAS Extension Bookstore. The URL is <http://ifasbooks.ifas.ufl.edu/p-150-weeds-of-southern-turfgrasses.aspx>. The page features a navigation menu on the left with categories such as Agriculture, Gardening, Lawn, and Landscape, and HACCP (Seafood). The main content area displays the product 'Weeds of Southern Turfgrasses' (SP 079) with a cover image and a description. The price is listed as \$14.00. The browser's taskbar at the bottom shows the time as 7:04 AM on 9/15/2017.

University of Florida

## IFAS Extension Bookstore

Home (0) Items Search GO

Agriculture  
Aquaculture and Wetlands  
Boating and Fishing  
Communications  
En Español  
For Educators and Students  
4-H  
Gardening, Lawn, and Landscape  
HACCP (Seafood)  
Health, Nutrition, Family, and Community  
Homes and Home Maintenance  
Horticulture and Plant Disease

Gardening, Lawn, and Landscape → Lawn and Landscape  
→ Weeds of Southern Turfgrasses



**Weeds of Southern Turfgrasses**  
SP 079

E-mail this product to a friend

This practical weed identification guide contains 427 color photographs of 193 weed species, their geographical range, and life cycle descriptions. Includes a glossary of taxonomic terms and index of common and scientific names. 208 pp.

Price: \$14.00

[View larger image](#)



# Weeds of Southern Turfgrasses

- Publication number: SP079
- From Univ of FL & Univ of GA
- <http://bit.ly/2mTkn69>

# Plant Image Gallery: Grasses and Grasslikes



- [Common Name Index](#)
- [Scientific Name Index](#)
- [Tribe Index](#)
- [Family Index](#)
- [Image Gallery Search Engine](#)



<http://www.noble.org/news/> de

A reference book on the most common grasses in the Great Plains region, this publication is ideal for farmers, ranchers, wildlife enthusiasts and students who have a need to identify grasses. This 120-page, full-color book can be used to easily and accurately identify grasses in the area.

# Plant Image Gallery: Index

## Index of Grasses and Grasslikes by Common Name

[Indexed by Scientific Name](#) | [Indexed by Tribe](#) | [Indexed by Family](#) | [Image Gallery Search Engine](#)

[A](#) | [B](#) | [C](#) | [D](#) | [E](#) | [F](#) | [G](#) | [H](#) | [I](#) | [J](#) | [K](#) | [L](#) | [M](#) | [N](#) | [O](#) | [P](#) | [Q](#) | [R](#) | [S](#) | [T](#) | [U](#) | [V](#) | [W](#) | [X](#) | [Y](#) | [Z](#)

<p><b>A</b></p> <ul style="list-style-type: none"><li>Alkali Sacaton</li><li>Annual Bluegrass</li><li>Arrowfeather Threeawn</li></ul> <p><b>B</b></p> <ul style="list-style-type: none"><li>Bahiagrass</li></ul>	<p><b>O</b></p> <ul style="list-style-type: none"><li>Oat, Wild</li><li>Oats, Cultivated</li><li>Offshoot Sedge</li><li>Old World Bluestem</li><li>Oldfield Threeawn</li><li>Orchardgrass</li></ul>
--	---





# Identification starts with

Written record keeping of details

Suitable digital or print images

Suitable physical samples

Proper labeling

Client/Site/Case history

# My contact info

[dennis.martin@okstate.edu](mailto:dennis.martin@okstate.edu)

405.744.5419

turf.okstate.edu

Dennis Martin

OSU

358 Ag Hall

Stillwater, OK 74078

# Label your plants

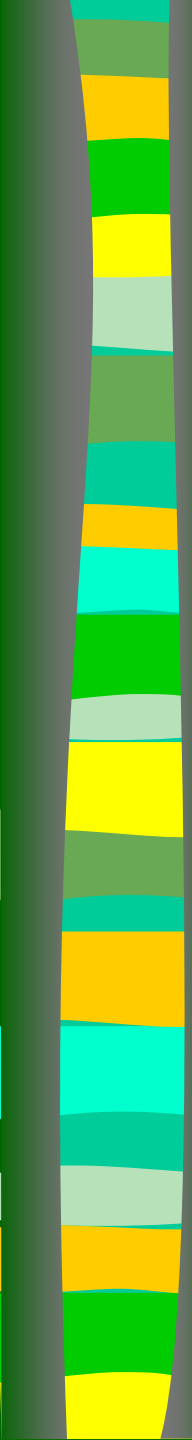
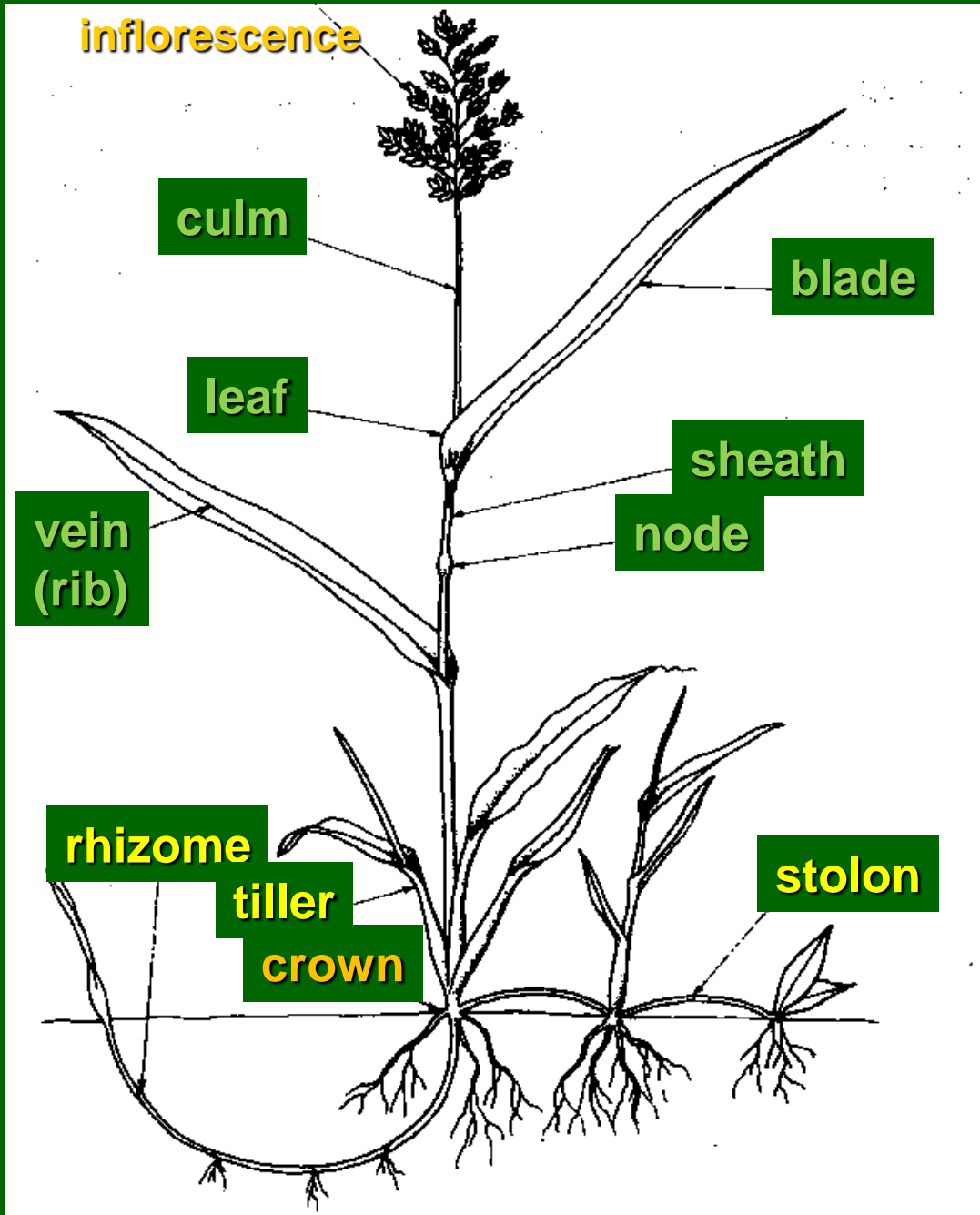


Switchgrass

14  
Switchgrass

Switchgrass

Switchgrass



# Bermudagrass



# Tall Fescue



# Turf type vs forage type tall fescue

Left: KY 31, non-turf type

Right: turf-type



# Turf-type tall fescue



- forage-type tall fescues provide a forage quality lawn – is that what you want?
- Examples of Forage types:
  - Fawn, Alta, Kenhye, Johnstone Kentucky 31
- Soil stabilization type:
  - Kentucky 31 is a soil stabilization/forage type that has been used for lawns but is less dense, lighter green, and more coarse.



# Zoysiagrass



# Zoysiagrass

- warm-season grass
- fine to medium-texture
- yellow green color
- stolons and rhizomes
- winter hardy
- full-sun to light-shade
- requires less fertilizer
- requires less mowing
- requires more water than bermudagrass, but less than tall fescue



# Zoysiagrass

## ■ Seeded

- Sunrise Brand
- Zenith

## ■ Vegetative

- *Z. japonicas*
- Meyer
- El Toro
- *Z. matrellas*
- Matrella
- Cavelier



# Cavalier variety and Matrella (VNS types) Zoysiagrass

- Vegetatively propagated
- fine texture
- Do not use north of US 412 until additional information is available



# St Augustinegrass



# St. Augustinegrass

- warm-season grass
- medium to coarse-texture
- spreads by stolons
- extreme southern regions, sheltered site



# Centipedegrass

Low Fertility

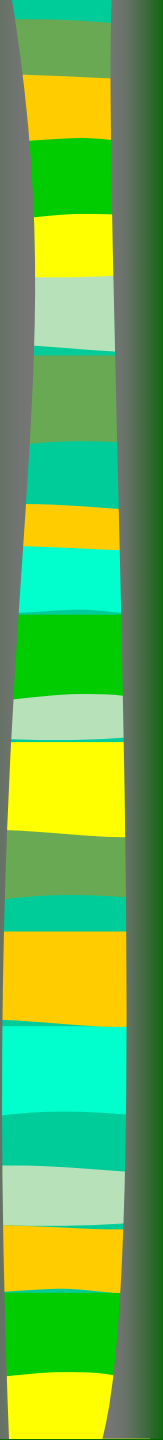
Can survive in partial shade

Does not produce high quality lawn



# Native warm-season turfgrass in Oklahoma

- Buffalograss
- Bluegrama
- Sideoats grama
- Inland saltgrass





# Buffalograss



# Buffalograss

Mowed at 3 inches (left) and non-mowed (right)



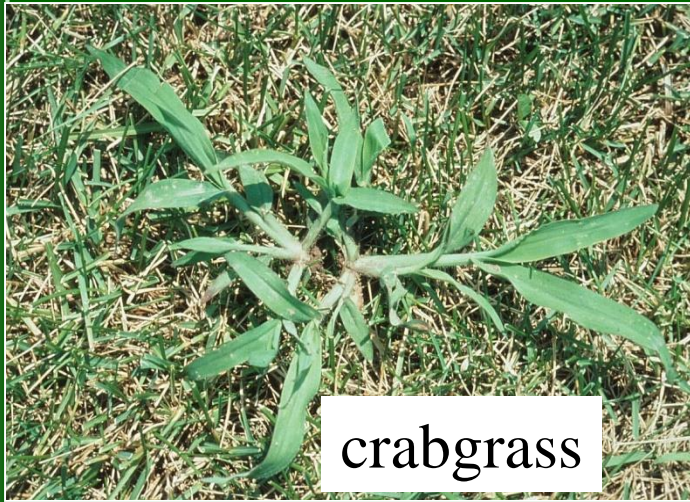
Flowers of bluegrama (bottom) & sideoats grama (top). Leaves and shoots look similar to buffalo but flowers are different. Gramas do not produce stolons.



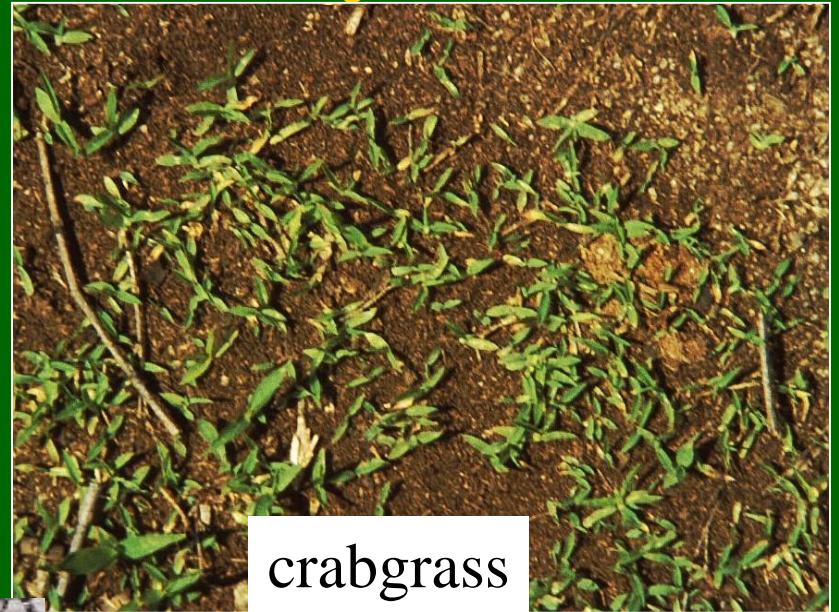
# Kentucky Bluegrass



# Summer Annual Grassy Weeds



crabgrass



crabgrass



goosegrass

# Yellow foxtail – summer annual

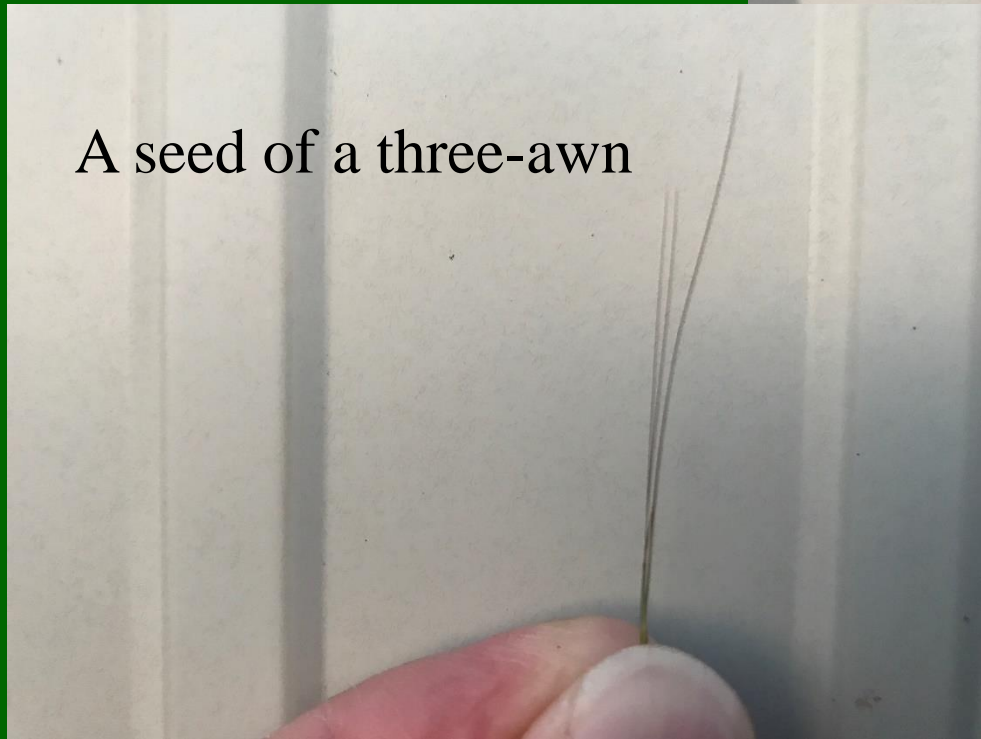


# Three-awn – annuals & perennials

Seed stalk



A seed of a three-awn



# Annual ryegrass



- Escaped from pasture winter overseeding programs
- Increased fire fuel load, heavy competition with perennial warm-season grasses for light, water and nutrients.
- Dies out in summer leaving the area open for erosion, after heavily competing with desired vegetation in late fall, winter and spring.



# Annual ryegrass



# Downy Brome



UGA5270025

# Ripgut brome



# Common Winter Annual Grassy Weeds

annual bluegrass  
(*Poa annua*)

downy brome, cheat,  
rescuegrass



# Winter Annual Broadleaf Weeds

Carolina geranium →



henbit



Creeping speedwell

# Winter Annual Broadleaf Weeds

Lawn burweed or spurweed



Mouse-ear chickweed



Common chickweed →

# Winter Annual Broadleaf Weeds



Johnny jump-up violets



Shepard's purse

# Annual sow thistle





# Cool-season Perennial Broadleaf Weeds

- dandelion
- white clover
- yellow woodsorrel



# Cool-season Perennial Broadleaf Weeds

- curly dock
- broadleaf plantain
- buckhorn plantain



# Cool Season Perennial Broadleaf Weed Common Violet in Turfgrass

**Violet Rhizome**

**Violet Encroachment**



# Summer Annual Broadleaf Weeds

- Knotweed
- prostrate spurge



White sap of spurge



# Summer Annual Broadleaf Weeds

- common lespedeza
- black medic



Dwarf fleabane - *Conyza ramosissima* –  
Warm season annual



# Asters – some annual, some perennial



# Bindweed - perennial





# Perennial sedges

- Yellow nutsedge (left)
- Purple nutsedge (right)



# Summer Annual or Perennial Grassy Weeds

■ sandbur



# Windmill grass - perennial



# Warm-season Perennial Grassy Weeds

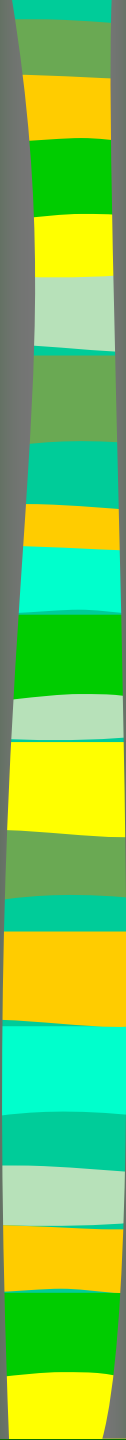
■ dallasgrass



# Broomsedge



# Broomsedge



# Plains bluestem or one of the old world bluestems



Plains bluestem or one of the old world  
bluestems





# Silver bluestem or silver beardgrass



# JOHNSONGRASS



# Johnsongrass (*Sorghum halapense*)

**Introduced, warm-season perennial**



Wait to treat Johnsongrass if it is under stress such as from cold or drought

Late April  
or Early  
May cold  
nights  
(45-50  
degrees)



Dry (hot)  
conditions  
in spring  
early  
summer  
(2011) Leaf  
rolling





# QUESTIONS?

Dennis Martin, OSU Turfgrass Specialist

Email: [dennis.martin@okstate.edu](mailto:dennis.martin@okstate.edu)

Phone: 405.744.5419