

► Introducing the NEW 20kW LCP Rack and Inline DX



Small and medium-sized data centers can be confined in small spaces where the build-up of heat is likely to affect the operation of sensitive equipment. Rittal's LCP DX is the ideal cooling solution in these locations.

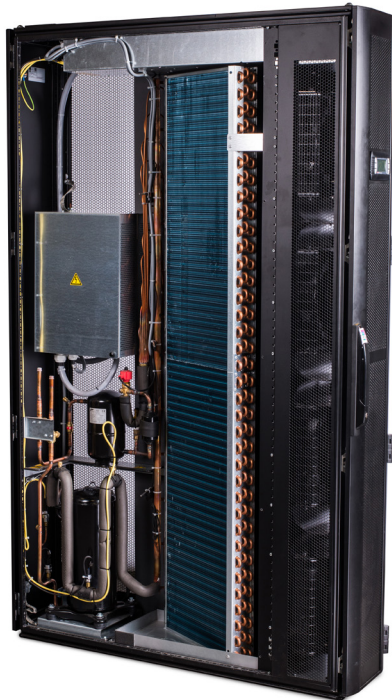
The LCP DX provides 20 kW of cooling capacity and is available in closed loop Rack and open loop Inline. The LCP Rack DX is coupled with one or two enclosed racks allowing placement in non-controlled environments. The LCP Inline DX is the optimal choice for maintaining temperatures in re-purposed data rooms and server closets.

Introducing the New LCP DX 20 kW:

Designed for maximum flexibility and energy efficiency, the LCP DX combines several innovative features.

- Cooling output 20 kW
- Standard and high ambient condensers for all North American locations
- Small footprint due to innovative large surface area coil design
- Easy maintenance with tool less EC fan replacement and easy access electrical connections
- High partial load efficiencies from the inverter controlled compressor which maintains set point temperature as heat loads vary
- Electronic expansion valve to quickly react to changing thermal loads and optimize system operation
- Redundancy achieved by inter-connecting up to 8 units, coordinating air flow, alarms and time of day operation
- Reduce downtime through remote notification when inlet filter needs to be replaced

Model No.	LCP Inline DX 3311.391	LCP Rack DX 3311.392
Total cooling output required BTU (kW)	68,242 (20)	68,242 (20)
Height inches (mm)	79 (2000)	79 (2000)
Width inches (mm)	12 (300)	12 (300)
Depth inches (mm)	48 (1200)	48 (1200)
Installation in bayed enclosure suite	Flush	Flush
Color	Black RAL 9005	Black RAL 9005
Rated operating voltage V, ~, Hz	208, 1~, 60	208, 1~, 60
Type of connection (electrical)	Terminal	Terminal
Air throughput at max. cooling output cfm (m³/h)	2825 (4800)	2825 (4800)
Fans may be exchanged with the system operational	Yes, tool less	Yes, tool less
Fan type (Number of fan modules)	EC (4)	EC (4)
Duty cycle %	100	100
Weight in supplied state lb (kg)	443 (201)	443 (201)
Compressor type	Scroll	Scroll
Piping (max) distance feet (m)	150 (45)	150 (45)
Network access	SNMP	SNMP
Accessories		
Condenser unit (Standard, high ambient temperature available)	9951.077	9951.077



US510 ■ 9/19

LBS Power

415 NW Flagler Ave Suite 301, Stuart FL, 34994 • Phone: (844)832-1142 •
(772)444 3135 Email: info@lbspower.com • Website: www.lbspower.com

ENCLOSURES

POWER DISTRIBUTION

CLIMATE CONTROL

IT INFRASTRUCTURE

SOFTWARE & SERVICES



FRIEDHELM LOH GROUP