

Tropical Forest of the South Autonomous Atlantic Region TREES and SHRUBS of the RAAS, Nicaragua

Ray Garth, Robin Foster, Iñigo de la Cerda, John Vandermeer

Photos by: R. B. Foster, Iñigo de la Cerda, & J. Vandermeer. Produced by: R. B. Foster, T. Theim, H. Betz, M. R. Metz, with support from the Andrew Mellon Foundation. © Univ. of Michigan; Environmental & Conservation Programs, The Field Museum, Chicago, IL 60605 USA. [RRC@fmnh.org] Rapid Color Guide # 74 version 1.2



1 *Hogplum* ANACARDIACEAE
Spondias mombin



2 *June plum* ANACARDIACEAE
Spondias purpurea



3 *Mountain cow food* ANACARDIACEAE
Tapirira guianensis



4 *Wari string* ANNONACEAE
Anaxagorea crassipetala



5 *Wari string* ANNONACEAE
Anaxagorea crassipetala



6 *Babapl* ANNONACEAE
Annona glabra



7 *Babaple* ANNONACEAE
Annona glabra



8 *Sowasap* ANNONACEAE
Annona muricata



9 *Untasani* ANNONACEAE
Guatteria diospyrifolia



10 *Untasani* ANNONACEAE
Guatteria diospyrifolia



11 ANNONACEAE
Guatteria recurvisepala



12 *Untasani* ANNONACEAE
Guatteria



13 *Black untasani* ANNONACEAE
Unonopsis



14 *Pole wood* ANNONACEAE
Xylopia sericophylla



15 *Pole wood* ANNONACEAE
Xylopia sericophylla



16 *Sapadilla* APOCYNACEAE
Lacmellea panamensis



17 *Sapadilla* APOCYNACEAE
Lacmellea



18 *Hog seed* APOCYNACEAE
Stemmadenia



19 *Dog seed* APOCYNACEAE
Tabernaemontana



20 *Dog seed* APOCYNACEAE
Tabernaemontana

2

Tropical Forest of the South Autonomous Atlantic Region TREES and SHRUBS of the RAAS, Nicaragua

Ray Garth, Robin Foster, Iñigo de la Cerda, John Vandermeer

Photos by: R. B. Foster, Iñigo de la Cerda, & J. Vandermeer. Produced by: R. B. Foster, T. Theim, H. Betz, M. R. Metz, with support from the Andrew Mellon Foundation. © Univ. of Michigan; Environmental & Conservation Programs, The Field Museum, Chicago, IL 60605 USA. [RRC@fmnh.org] Rapid Color Guide # 74 version 1.2



21 *Dog seed* APOCYNACEAE
Tabernaemontana



22 *Red seed* APOCYNACEAE
Thevetia ahouai



23 *Crab shell* ARALIACEAE
Dendropanax arboreus



24 *Crab shell* ARALIACEAE
Dendropanax arboreus



25 *Crab shell* ARALIACEAE
Dendropanax



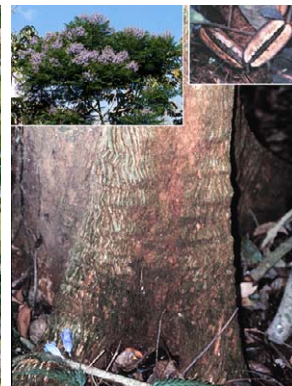
26 *Nine finger* ARALIACEAE
Schefflera morototoni



27 *Nine finger* ARALIACEAE
Schefflera morototoni



28 *Gody* BIGNONIACEAE
Crescentia



29 *Kuam tree* BIGNONIACEAE
Jacaranda copaia



30 *Kuam tree* BIGNONIACEAE
Jacaranda copaia



31 BIGNONIACEAE
Tabebuia neochrysantha



32 *Guayacan* BIGNONIACEAE
Tabebuia guayacan



33 *Savana oak* BIGNONIACEAE
Tabebuia rosea



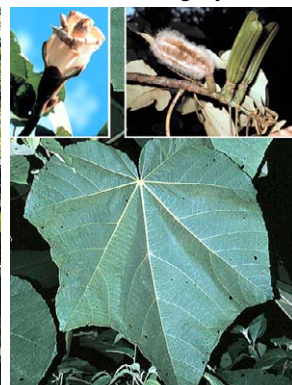
34 *Savana oak* BIGNONIACEAE
Tabebuia rosea



35 *Nata* BIXACEAE
Bixa urucurana



36 *Cotton* BOMBACACEAE
Ceiba pentandra



37 *Mojo* BOMBACACEAE
Ochroma pyramidale



38 *Provision* BOMBACACEAE
Pachira aquatica



39 *Provision* BOMBACACEAE
Pachira aquatica



40 *Provision* BOMBACACEAE
Pachira aquatica

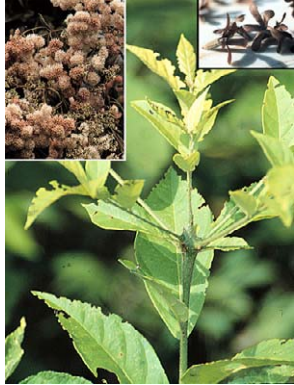
Tropical Forest of the South Autonomous Atlantic Region TREES and SHRUBS of the RAAS, Nicaragua

Ray Garth, Robin Foster, Iñigo de la Cerda, John Vandermeer

Photos by: R. B. Foster, Iñigo de la Cerda, & J. Vandermeer. Produced by: R. B. Foster, T. Theim, H. Betz, M. R. Metz, with support from the Andrew Mellon Foundation. © Univ. of Michigan; Environmental & Conservation Programs, The Field Museum, Chicago, IL 60605 USA. [RRC@fmnh.org] Rapid Color Guide # 74 version 1.2



41 *Provision* BOMBACACEAE
Pachira



42 *Sam wood* BORAGINACEAE
Cordia alliodora



43 *Sam wood* BORAGINACEAE
Cordia alliodora



44 *Camp stick* BORAGINACEAE
Cordia bicolor



45 *Wild shade* BORAGINACEAE
Cordia



46 *Spary* BORAGINACEAE
Cordia



47 *Kiamphia* BURSERACEAE
Protium



48 *Kiamphia* BURSERACEAE
Protium



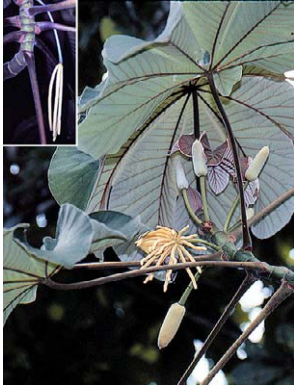
49 *Kerosene* BURSERACEAE
Tetragastris panamensis



50 *Kerosene* BURSERACEAE
Tetragastris panamensis



51 *Trumpet* CECROPIACEAE
Cecropia insignis



52 *Trumpet* CECROPIACEAE
Cecropia obtusifolia



53 *Trumpet* CECROPIACEAE
Cecropia obtusifolia



54 *False trumpet* CECROPIACEAE
Pourouma bicolor



55 CELASTRACEAE
Maytenus



56 *Coco plum* CHRYSOBALANACEAE
Chrysobalanus icaco



57 *Hairy plum* CHRYSOBALANACEAE
Hirtella americana



58 *Zenia* CHRYSOBALANACEAE
Hirtella guatemalensis?



59 *Pigin plum* CHRYSOBALANACEAE
Hirtella triandra



60 *Hairy plum* CHRYSOBALANACEAE
Hirtella

4

Tropical Forest of the South Autonomous Atlantic Region TREES and SHRUBS of the RAAS, Nicaragua

Ray Garth, Robin Foster, Iñigo de la Cerda, John Vandermeer

Photos by: R. B. Foster, Iñigo de la Cerda, & J. Vandermeer. Produced by: R. B. Foster, T. Theim, H. Betz, M. R. Metz, with support from the Andrew Mellon Foundation.
© Univ. of Michigan; Environmental & Conservation Programs, The Field Museum, Chicago, IL 60605 USA. [RRC@fmnh.org] Rapid Color Guide # 74 version 1.2



61 *Red berry* CHRYSOBALANACEAE
Licania hypoleuca



62 *Red berry* CHRYSOBALANACEAE
Licania hypoleuca



63 *Nigahead* CHRYSOBALANACEAE
Licania



64 *Bituj* CHRYSOBAANACEAE
Maranthes panamensis



65 *Pipe stick* CLETHRACEAE
Clethra



66 *Sta maria* CLUSIACEAE
Calophyllum brasiliense



67 *Sambogon* CLUSIACEAE
Symphonia globulifera



68 *Suumu* CLUSIACEAE
Garcinia intermedia



69 *Suumu* CLUSIACEAE
Garcinia intermedia



70 *Coom leaf* CLUSIACEAE
Garcinia madruno



71 *Ringworm leaf* CLUSIACEAE
Vismia ferruginea?



72 *Ringworm leaf* CLUSIACEAE
Vismia ferruginea?



73 *Ringworm leaf* CLUSIACEAE
Vismia macrophylla



74 *Ringworm leaf* CLUSIACEAE
Vismia macrophylla



75 *Ringworm leaf* CLUSIACEAE
Vismia



76 COCHLOSPERMACEAE
Cochlospermum vitifolium



77 *Olive* COMBRETACEAE
Terminalia amazonia



78 *Amance* COMBRETACEAE
Terminalia catappa



79 ELAEOCARPACEAE
Sloanea



80 ELAEOCARPACEAE
Sloanea?

Tropical Forest of the South Autonomous Atlantic Region TREES and SHRUBS of the RAAS, Nicaragua

Ray Garth, Robin Foster, Iñigo de la Cerda, John Vandermeer

Photos by: R. B. Foster, Iñigo de la Cerda, & J. Vandermeer. Produced by: R. B. Foster, T. Theim, H. Betz, M. R. Metz, with support from the Andrew Mellon Foundation. © Univ. of Michigan; Environmental & Conservation Programs, The Field Museum, Chicago, IL 60605 USA. [RRC@fmnh.org] Rapid Color Guide # 74 version 1.2



81 *Saw leaf* EUPHORBIACEAE
Acidoton nicaraguense



82 *Saw leaf* EUPHORBIACEAE
Acidoton nicaraguense



83 EUPHORBIACEAE
Alchornea costaricensis



84 EUPHORBIACEAE
Alchornea latifolia



85 *Medicemento* EUPHORBIACEAE
Croton schiedeanus



86 *Ichy mojo* EUPHORBIACEAE
Croton smithianus



87 *Red wood* EUPHORBIACEAE
Hyeronima alchorneoides



88 *Red wood* EUPHORBIACEAE
Hyeronima alchorneoides



89 *Pigin toe* EUPHORBIACEAE
Mabea occidentalis



90 *Pigin toe* EUPHORBIACEAE
Mabea



91 *Pigin toe* EUPHORBIACEAE
Mabea



92 EUPHORBIACEAE
Pausandra trianae



93 *Apple* EUPHORBIACEAE
Pera arborea



94 *Old lady hair* FABACEAE
Abarema macradenium



95 *Old lady hair* FABACEAE
Abarema macradenium



96 *Acacia mangium* FABACEAE
Acacia mangium



97 *Bullit* FABACEAE
Andira inermis



98 *Yard malinche* FABACEAE
Caesalpinia pulcherrima



99 *Comenegro* FABACEAE
Dialium guianense



100 *Malinche* FABACEAE
Delonix regia

6

Tropical Forest of the South Autonomous Atlantic Region TREES and SHRUBS of the RAAS, Nicaragua

Ray Garth, Robin Foster, Iñigo de la Cerda, John Vandermeer

Photos by: R. B. Foster, Iñigo de la Cerda, & J. Vandermeer. Produced by: R. B. Foster, T. Theim, H. Betz, M. R. Metz, with support from the Andrew Mellon Foundation. © Univ. of Michigan; Environmental & Conservation Programs, The Field Museum, Chicago, IL 60605 USA. [RRC@fmnh.org] Rapid Color Guide # 74 version 1.2



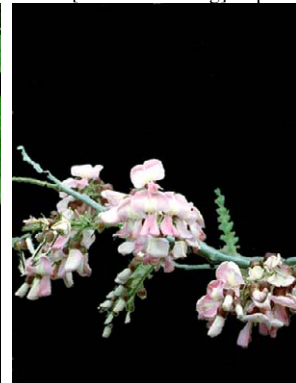
101 Ibo FABACEAE
Dipteryx oleifera



102 Ibo flower FABACEAE
Dipteryx oleifera



103 Horse beans FABACEAE
Erythrina



104 Black stick FABACEAE
Gliricidia sepium



105 Locas FABACEAE
Hymenaea courbaril



106 Bribri FABACEAE
Inga acuminata



107 Bribri FABACEAE
Inga cocleensis



108 Bribri FABACEAE
Inga cocleensis



109 Bribri FABACEAE
Inga goldmanii



110 Bribri FABACEAE
Inga laurina



111 Bribri FABACEAE
Inga pavonis



112 Bribri FABACEAE
Inga pezifera



113 Bribri FABACEAE
Inga punctata



114 River bribri FABACEAE
Inga thibaudiana



115 River bribri FABACEAE
Inga thibaudiana



116 Bribri FABACEAE
Inga umbellifera



117 Bribri FABACEAE
Inga



118 Bribri FABACEAE
Inga



119 Bribri FABACEAE
Inga



120 Bribri FABACEAE
Inga

Tropical Forest of the South Autonomous Atlantic Region TREES and SHRUBS of the RAAS, Nicaragua

Ray Garth, Robin Foster, Iñigo de la Cerda, John Vandermeer

Photos by: R. B. Foster, Iñigo de la Cerda, & J. Vandermeer. Produced by: R. B. Foster, T. Theim, H. Betz, M. R. Metz, with support from the Andrew Mellon Foundation.
© Univ. of Michigan; Environmental & Conservation Programs, The Field Museum, Chicago, IL 60605 USA. [RRC@fmnh.org] Rapid Color Guide # 74 version 1.2



121 Girly FABACEAE
Lecointea peruviana



122 Dog bush FABACEAE
Lonchocarpus



123 Dog bush FABACEAE
Lonchocarpus



124 Sleeping tree FABACEAE
Pentaclethra macroloba



125 Sleeping tree FABACEAE
Pentaclethra macroloba



126 Sleeping tree FABACEAE
Pentaclethra macroloba



127 Bat ears tree FABACEAE
Prioria copaifera



128 Bat ears tree FABACEAE
Prioria copaifera



129 High land cawi FABACEAE
Pterocarpus rohrii



130 High land cawi FABACEAE
Pterocarpus rohrii



131 Christmas blossom FABACEAE
Senna alata



132 Nica purge FABACEAE
Senna



133 Nica purge FABACEAE
Senna



134 Pink mary FABACEAE
Zygia longifolia



135 Pink mary FABACEAE
Zygia longifolia



136 FABACEAE



137 FABACEAE



138 FLACOURTIACEAE
Banara guianensis



139 White wood FLACOURTIACEAE
Casearia arborea



140 White wood FLACOURTIACEAE
Casearia arborea

8

Tropical Forest of the South Autonomous Atlantic Region TREES and SHRUBS of the RAAS, Nicaragua

Ray Garth, Robin Foster, Iñigo de la Cerda, John Vandermeer

Photos by: R. B. Foster, Iñigo de la Cerda, & J. Vandermeer. Produced by: R. B. Foster, T. Theim, H. Betz, M. R. Metz, with support from the Andrew Mellon Foundation. © Univ. of Michigan; Environmental & Conservation Programs, The Field Museum, Chicago, IL 60605 USA. [RRC@fmnh.org] Rapid Color Guide # 74 version 1.2



141 *White wood* FLACOURTIACEAE
Casearia commersoniana



142 *White wood* FLACOURTIACEAE
Casearia sylvestris



143 *White wood* FLACOURTIACEAE
Casearia



144 *White wood* FLACOURTIACEAE
Casearia



145 *White wood* FLACOURTIACEAE
Casearia



146 *White wood* FLACOURTIACEAE
Casearia?



147 *Hasseltia* FLACOURTIACEAE
Hasseltia floribunda



148 *Hasseltia* FLACOURTIACEAE
Hasseltia floribunda



149 *White wood* FLACOURTIACEAE
Lacistema aggregatum



150 *Areno* FLACOURTIACEAE
Laetia procera



151 *Areno* FLACOURTIACEAE
Laetia thamnina



152 *Areno* FLACOURTIACEAE
Laetia thamnina



153 FLACOURTIACEAE
Lindackeria laurina



154 *Areno* FLACOURTIACEAE
Ryania speciosa



155 *Areno* FLACOURTIACEAE
Ryania speciosa



156 *Star prickly* FLACOURTIACEAE
Xylosma



157 *Ironwood* FLACOURTIACEAE
Zuelania guidonia



158 *Ironwood* FLACOURTIACEAE
Zuelania guidonia



159 *Ironwood* FLACOURTIACEAE
Zuelania guidonia



160 HUMIRIACEAE
Sacoglottis trichogyna

Tropical Forest of the South Autonomous Atlantic Region TREES and SHRUBS of the RAAS, Nicaragua

Ray Garth, Robin Foster, Iñigo de la Cerda, John Vandermeer

Photos by: R. B. Foster, Iñigo de la Cerda, & J. Vandermeer. Produced by: R. B. Foster, T. Theim, H. Betz, M. R. Metz, with support from the Andrew Mellon Foundation.
© Univ. of Michigan; Environmental & Conservation Programs, The Field Museum, Chicago, IL 60605 USA. [RRC@fmnh.org] Rapid Color Guide # 74 version 1.2



161 *Wild pear* LAURACEAE
Ocotea



162 *Wild pear* LAURACEAE
Ocotea



163 *Pear* LAURACEAE
Persea americana



164 *Pear* LAURACEAE
Persea americana



165 LAURACEAE



166 *Tubaco* LECYTHIDACEAE
Grias cauliflora



167 *Monkey pot* LECYTHIDACEAE
Lecythis ampla



168 LYTHRACEAE
Adenaria floribunda



169 *Crabu* MALPIGHIACEAE
Byrsonima crassifolia



170 MALPIGHIACEAE
Heteropterys multiflora



171 *Jug* MELASTOMATACEAE
Aciotis



172 *Shaya* MELASTOMATACEAE
Bellucia grossularioides



173 *Jug* MELASTOMATACEAE
Clidemia



174 *Jug* MELASTOMATACEAE
Clidemia



175 *Jugjug* MELASTOMATACEAE
Clidemia



176 MELASTOMATACEAE
Conostegia xalapensis



177 *Shaya* MELASTOMATACEAE
Conostegia xalapensis



178 *Shaya* MELASTOMATACEAE
Henriettea seemannii



179 *Shaya* MELASTOMATACEAE
Henriettea seemannii



180 *Chinejug* MELASTOMATACEAE
Leandra

10

Tropical Forest of the South Autonomous Atlantic Region TREES and SHRUBS of the RAAS, Nicaragua

Ray Garth, Robin Foster, Iñigo de la Cerda, John Vandermeer

Photos by: R. B. Foster, Iñigo de la Cerda, & J. Vandermeer. Produced by: R. B. Foster, T. Theim, H. Betz, M. R. Metz, with support from the Andrew Mellon Foundation. © Univ. of Michigan; Environmental & Conservation Programs, The Field Museum, Chicago, IL 60605 USA. [RRC@fmnh.org] Rapid Color Guide # 74 version 1.2



181 *Jug* MELASTOMATACEAE
Leandra



182 *Jug* MELASTOMATACEAE
Leandra



183 *Shaya* MELASTOMATACEAE
Miconia affinis



184 *Shaya* MELASTOMATACEAE
Miconia argentea



185 *Shaya* MELASTOMATACEAE
Miconia bubalina



186 *Shaya* MELASTOMATACEAE
Miconia elata



187 *Shaya* MELASTOMATACEAE
Miconia impetiolaris



188 *Shaya* MELASTOMATACEAE
Miconia lateriflora



189 *Shaya* MELASTOMATACEAE
Miconia prasina



190 *Shaya* MELASTOMATACEAE
Miconia stevensiana



191 *Shaya* MELASTOMATACEAE
Miconia tomentosa



192 *Shaya* MELASTOMATACEAE
Miconia



193 *Shaya* MELASTOMATACEAE
Miconia



194 *Shaya* MELASTOMATACEAE
Miconia



195 MELASTOMATACEAE
Mouriri myrtilloides



196 *Shaya* MELASTOMATACEAE
Tococa



197 *Shaya* MELASTOMATACEAE
Tococa



198 *Shaya* MELASTOMATACEAE
Tococa



199 *Saba* MELIACEAE
Carapa guianensis



200 *Saba* MELIACEAE
Carapa guianensis

Tropical Forest of the South Autonomous Atlantic Region TREES and SHRUBS of the RAAS, Nicaragua

Ray Garth, Robin Foster, Iñigo de la Cerda, John Vandermeer

Photos by: R. B. Foster, Iñigo de la Cerda, & J. Vandermeer. Produced by: R. B. Foster, T. Theim, H. Betz, M. R. Metz, with support from the Andrew Mellon Foundation. © Univ. of Michigan; Environmental & Conservation Programs, The Field Museum, Chicago, IL 60605 USA. [RRC@fmnh.org] Rapid Color Guide # 74 version 1.2



201 MELIACEAE
Guarea bullata



202 MELIACEAE
Guarea kunthiana



203 MELIACEAE
Guarea grandifolia



204 MELIACEAE
Guarea grandifolia



205 *Wing leaf* MELIACEAE
Guarea pterorhachis



206 *Mahogany* MELIACEAE
Swietenia macrophylla



207 *Mahogany* MELIACEAE
Swietenia macrophylla



208 MELIACEAE
Trichilia pallida



209 MELIACEAE
Trichilia pallida



210 *Snake bush* MONIMIACEAE
Siparuna



211 *Snake bush* MONIMIACEAE
Siparuna



212 *Snake bush* MONIMIACEAE
Siparuna



213 *Breadfruit* MORACEAE
Artocarpus altilis



214 *Ojoche* MORACEAE
Brosimum guianense



215 *Ojoche* MORACEAE
Brosimum lactescens



216 *Rubber tree* MORACEAE
Castilla elastica



217 *Rubber tree* MORACEAE
Castilla elastica



218 MORACEAE
Clarisia biflora



219 *Fig* MORACEAE
Ficus colubrinae



220 *Fig* MORACEAE
Ficus glabrata

12

Tropical Forest of the South Autonomous Atlantic Region TREES and SHRUBS of the RAAS, Nicaragua

Ray Garth, Robin Foster, Iñigo de la Cerda, John Vandermeer

Photos by: R. B. Foster, Iñigo de la Cerda, & J. Vandermeer. Produced by: R. B. Foster, T. Theim, H. Betz, M. R. Metz, with support from the Andrew Mellon Foundation. © Univ. of Michigan; Environmental & Conservation Programs, The Field Museum, Chicago, IL 60605 USA. [RRC@fmnh.org] Rapid Color Guide # 74 version 1.2



221 *Fig* MORACEAE
Ficus pertusa



222 *Fig* MORACEAE
Ficus



223 *Fig* MORACEAE
Ficus



224 *Fig* MORACEAE
Ficus



225 MORACEAE
Maquira costaricana



226 MORACEAE
Maquira costaricana



227 *Ojoche* MORACEAE
Pseudolmedia spuria



228 *Ojoche* MORACEAE
Pseudolmedia spuria



229 MORACEAE
Trophis racemosa



230 *Banak* MYRISTICACEAE
Otoba novogranatensis



231 *Banak* MYRISTICACEAE
Otoba novogranatensis



232 *Banak* MYRISTICACEAE
Virola koschnyi



233 *Banak* MYRISTICACEAE
Virola koschnyi



234 *Banak* MYRISTICACEAE
Virola multiflora



235 *Banak* MYRISTICACEAE
Virola multiflora



236 MYRISTICACEAE
Virola sebifera



237 *Banak* MYRISTICACEAE
Virola sebifera



238 *Banak* MYRISTICACEAE
Virola sebifera



239 NYCTAGINACEAE
Guapira costaricana



240 NYCTAGINACEAE
Guapira costaricana

Tropical Forest of the South Autonomous Atlantic Region TREES and SHRUBS of the RAAS, Nicaragua

Ray Garth, Robin Foster, Iñigo de la Cerda, John Vandermeer

Photos by: R. B. Foster, Iñigo de la Cerda, & J. Vandermeer. Produced by: R. B. Foster, T. Theim, H. Betz, M. R. Metz, with support from the Andrew Mellon Foundation. © Univ. of Michigan; Environmental & Conservation Programs, The Field Museum, Chicago, IL 60605 USA. [RRC@fmnh.org] Rapid Color Guide # 74 version 1.2



241 *Wild grape* MYRSINACEAE
Ardisia standleyana cf.



242 *Wild grape* MYRSINACEAE
Ardisia



243 *Wild guava* MYRTACEAE
Myrcia splendens



244 *Yardbroom tree* MYRTACEAE
Myrciaria floribunda



245 *Guava* MYRTACEAE
Psidium guajava



246 *Paquita* NYCTAGINACEAE
Neea



247 *Paquita* NYCTAGINACEAE
Neea



248 *Tubaco* OCHNACEAE
Cespedesia macrophylla



249 *Tubaco* OCHNACEAE
Cespedesia macrophylla



250 *Tubaco* OCHNACEAE
Ouratea costaricensis



251 OCHNACEAE
Ouratea nitida



252 OLACACEAE
Heisteria concinna



253 OLACACEAE
Minquartia guianensis



254 *He cow foot* PIPERACEAE
Piper auritum



255 *Cow foot tea* PIPERACEAE
Piper peltatum



256 *Cow foot* PIPERACEAE
Piper peltatum



257 *Cow foot* PIPERACEAE
Piper



258 *Cow foot* PIPERACEAE
Piper



259 *Cow foot* PIPERACEAE
Piper



260 *Cow foot* PIPERACEAE
Piper

14 Tropical Forest of the South Autonomous Atlantic Region TREES and SHRUBS of the RAAS, Nicaragua

Ray Garth, Robin Foster, Iñigo de la Cerda, John Vandermeer

Photos by: R. B. Foster, Iñigo de la Cerda, & J. Vandermeer. Produced by: R. B. Foster, T. Theim, H. Betz, M. R. Metz, with support from the Andrew Mellon Foundation. © Univ. of Michigan; Environmental & Conservation Programs, The Field Museum, Chicago, IL 60605 USA. [RRC@fmnh.org] Rapid Color Guide # 74 version 1.2



261 *Tubaco* POLYGONACEAE
Cocoloba tuerckheimii?



262 RHIZOPHORACEAE
Cassipourea elliptica



263 *Red mangrove* RHIZOPHORACEAE
Rhizophora mangle



264 *Red mangrove* RHIZOPHORACEAE
Rhizophora mangle



265 *Sulsul* RUBIACEAE
Alibertia edulis



266 *Sulacra* RUBIACEAE
Amaioua corymbosa



267 *Sulacra* RUBIACEAE
Amaioua corymbosa



268 *Sulacra* RUBIACEAE
Amaioua corymbosa



269 RUBIACEAE
Chione sylvicola



270 RUBIACEAE
Crusea?



271 RUBIACEAE
Faramaea occidentalis



272 RUBIACEAE
Ferdinandusa panamensis



273 RUBIACEAE
Genipa americana



274 RUBIACEAE
Genipa americana



275 *Swamp stick* RUBIACEAE
Guettarda combsii



276 *Yellow red garfy* RUBIACEAE
Isertia haenkeana



277 RUBIACEAE
Palicourea crocea



278 *Monkey apple* RUBIACEAE
Posoqueria latifolia



279 *Monkey apple* RUBIACEAE
Posoqueria latifolia



280 RUBIACEAE
Psychotria acuminata

Tropical Forest of the South Autonomous Atlantic Region TREES and SHRUBS of the RAAS, Nicaragua

Ray Garth, Robin Foster, Iñigo de la Cerda, John Vandermeer

Photos by: R. B. Foster, Iñigo de la Cerda, & J. Vandermeer. Produced by: R. B. Foster, T. Theim, H. Betz, M. R. Metz, with support from the Andrew Mellon Foundation.
© Univ. of Michigan; Environmental & Conservation Programs, The Field Museum, Chicago, IL 60605 USA. [RRC@fmnh.org] Rapid Color Guide # 74 version 1.2



281 RUBIACEAE
Psychotria acuminata



282 RUBIACEAE
Psychotria berteriana



283 RUBIACEAE
Psychotria brachiata



284 RUBIACEAE
Psychotria brachiata



285 RUBIACEAE
Psychotria capitata



286 RUBIACEAE
Psychotria deflexa



287 RUBIACEAE
Psychotria deflexa



288 RUBIACEAE
Psychotria emetica



289 *Blue beets* RUBIACEAE
Psychotria emetica



290 *Wild coffee* RUBIACEAE
Psychotria glomerulata



291 RUBIACEAE
Psychotria glomerulata



292 RUBIACEAE
Psychotria gracilentia



293 RUBIACEAE
Psychotria gracilentia



294 RUBIACEAE
Psychotria marginata



295 RUBIACEAE
Psychotria marginata



296 RUBIACEAE
Psychotria racemosa



297 RUBIACEAE
Psychotria suerrensii



298 RUBIACEAE
Psychotria



299 RUBIACEAE
Randia



300 RUBIACEAE
Rudgea cornifolia

16

Tropical Forest of the South Autonomous Atlantic Region TREES and SHRUBS of the RAAS, Nicaragua

Ray Garth, Robin Foster, Iñigo de la Cerda, John Vandermeer

Photos by: R. B. Foster, Iñigo de la Cerda, & J. Vandermeer. Produced by: R. B. Foster, T. Theim, H. Betz, M. R. Metz, with support from the Andrew Mellon Foundation. © Univ. of Michigan; Environmental & Conservation Programs, The Field Museum, Chicago, IL 60605 USA. [RRC@fmnh.org] Rapid Color Guide # 74 version 1.2



301 *Sore toe* RUTACEAE
Galipea granulosa



302 *Prickly yellow* RUTACEAE
Zanthoxylum ekmanii



303 *Prickly yellow* RUTACEAE
Zanthoxylum ekmanii



304 RUTACEAE
Zanthoxylum juniperinum



305 RUTACEAE
Zanthoxylum juniperinum



306 RUTACEAE
Zanthoxylum panamense



307 RUTACEAE
Zanthoxylum panamense



308 RUTACEAE
Zanthoxylum



309 *Bila bila* SAPINDACEAE
Cupania



310 *Bila bila* SAPINDACEAE
Cupania



311 *Bila bila* SAPINDACEAE
Cupania



312 SAPINDACEAE
Matayba oppositifolia



313 SAPINDACEAE
Talisia nervosa



314 SAPINDACEAE
Talisia nervosa



315 SAPINDACEAE
Talisia princeps



316 *Star apple* SAPOTACEAE
Chrysophyllum cainito



317 *Sapadilla* SAPOTACEAE
Manilkara zapota



318 *Sapadilla* SAPOTACEAE
Manilkara zapota



319 SAPOTACEAE
Pouteria campechiana



320 SAPOTACEAE
Pouteria reticulata

Tropical Forest of the South Autonomous Atlantic Region TREES and SHRUBS of the RAAS, Nicaragua

Ray Garth, Robin Foster, Iñigo de la Cerda, John Vandermeer

Photos by: R. B. Foster, Iñigo de la Cerda, & J. Vandermeer. Produced by: R. B. Foster, T. Theim, H. Betz, M. R. Metz, with support from the Andrew Mellon Foundation. © Univ. of Michigan; Environmental & Conservation Programs, The Field Museum, Chicago, IL 60605 USA. [RRC@fmnh.org] Rapid Color Guide # 74 version 1.2



321 SAPOTACEAE
Pouteria reticulata



322 *Mami* SAPOTACEAE
Pouteria



323 *Mami* SAPOTACEAE
Pouteria



324 SAPOTACEAE
Pouteria



325 *Bitter wood* SIMAROUBACEAE
Quassia amara



326 *School* SIMAROUBACEAE
Simarouba amara



327 *School* SIMAROUBACEAE
Simarouba amara



328 *Guana food* SOLANACEAE
Cestrum megalophyllum



329 *Savanna tomatoes* SOLANACEAE
Solanum



330 SOLANACEAE
Solanum



331 *Plate leaf* SOLANACEAE
Solanum



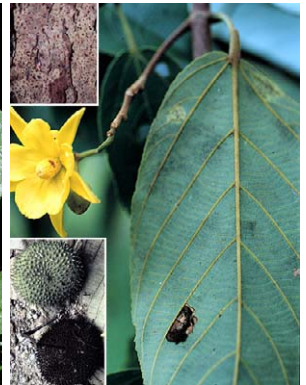
332 SOLANACEAE



333 STAPHYLEACEAE
Turpinia occidentalis



334 SYMPLOCACEAE
Symplocos



335 *Monkey comb* TILIACEAE
Apeiba membranacea



336 *Wasimo* TILIACEAE
Luehea seemanii



337 *Wasimo* TILIACEAE
Luehea seemanii



338 *Wasimo* TILIACEAE
Luehea seemanii



339 TILIACEAE
Trichospermum galeottii



340 ULMACEAE
Ampelocera macrocarpa

18 Tropical Forest of the South Autonomous Atlantic Region TREES and SHRUBS of the RAAS, Nicaragua

Ray Garth, Robin Foster, Iñigo de la Cerda, John Vandermeer

Photos by: R. B. Foster, Iñigo de la Cerda, & J. Vandermeer. Produced by: R. B. Foster, T. Theim, H. Betz, M. R. Metz, with support from the Andrew Mellon Foundation. © Univ. of Michigan; Environmental & Conservation Programs, The Field Museum, Chicago, IL 60605 USA. [RRC@fmnh.org] Rapid Color Guide # 74 version 1.2



341 ULMACEAE
Celtis schippii



342 *Sany* ULMACEAE
Trema micrantha



343 *Sany* ULMACEAE
Trema micrantha



344 VERBENACEAE
Callicarpa acuminata



345 VERBENACEAE
Callicarpa acuminata



346 VERBENACEAE
Citharexylum



347 VERBENACEAE
Lantana trifolia



348 *Teek* VERBENACEAE
Tectona grandis



349 *Bimbayan* VERBENACEAE
Vitex cooperi



350 *Binbayan* VERBENACEAE
Vitex cooperi



351 VIOLACEAE
Rinorea squamata



352 *Bone tree* VIOLACEAE
Rinorea squamata



353 *Areno* VOCHYSIACEAE
Qualea paraensis



354 *May pole* VOCHYSIACEAE
Vochysia ferruginea



355 *May pole* VOCHYSIACEAE
Vochysia ferruginea



356 *May pole* VOCHYSIACEAE
Vochysia ferruginea



357 *Yamari* VOCHYSIACEAE
Vochysia hondurensis



358 ?



359 ?



360 ?