

Los Cedros Reserve, Imbabura, ECUADOR

PLEUROTHALLID ORCHIDS of Los Cedros

Lorena Endara –Univ. of Florida, Stig Dalstrom, & Alex Reynolds

All photos by L. Endara, S. Dalstrom, & Alex Reynolds, except where noted.

Produced by: R. Foster, T. Wachter, J. Philipp; with support from the Andrew Mellon Foundation and Ellen Hyndman Fund.

© L. Endara [clendara@hotmail.com] Dept. of Biology, Univ. of Florida, Gainesville, FL USA; S. Dalstrom; A. Reynolds.

© Environmental & Conservation Programs, The Field Museum, Chicago, IL 60605 USA. [RRC@fmnh.org] [http://www.fmnh.org/plantguides/] Rapid Color Guide #228 TRIAL02 09/2009



1 *Brachionidium ingramii*



2 *Dracula alcithoe*



3 *Dracula* cf. *chiroptera*



4 *Dracula felix*



5 *Dracula lafleurii*



6 *Dracula lafleurii*



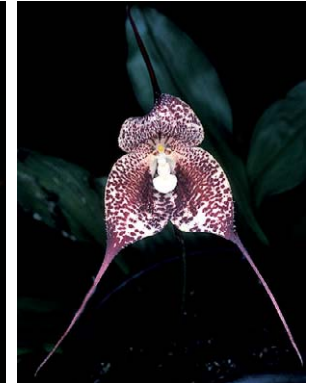
7 *Dracula mantissa*



8 *Dracula marsupialis*



9 *Dracula morleyi*



10 *Dracula pubescens*



11 *Dracula radiosa*



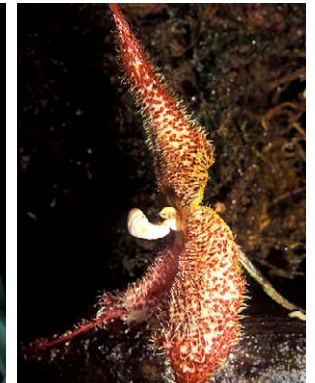
12 *Dracula syndactyla*



13 *Dracula wallisii*



14 *Dracula* cf. *wallisii*



15 *Dracula woolwardiae*



16 *Dracula* cf. *woolwardiae*



17 *Dracula* sp.



18 *Dracula* sp.



19 *Lepanthes calodyction*



20 *Lepanthes hexapus*

Los Cedros Reserve, Imbabura, ECUADOR

PLEUROTHALLID ORCHIDS of Los Cedros

Lorena Endara –Univ. of Florida, Stig Dalstrom, & Alex Reynolds

All photos by L. Endara, S. Dalstrom, & Alex Reynolds, except where noted.

Produced by: R. Foster, T. Wachter, J. Philipp; with support from the Andrew Mellon Foundation and Ellen Hyndman Fund.

© L. Endara [clendara@hotmail.com] Dept. of Biology, Univ. of Florida, Gainesville, FL USA; S. Dalstrom; A. Reynolds.

© Environmental & Conservation Programs, The Field Museum, Chicago, IL 60605 USA. [RRC@fmnh.org] [http://www.fmnh.org/plantguides/] Rapid Color Guide #228 TRIAL02 09/2009



21 *Lepanthes kuijtii*



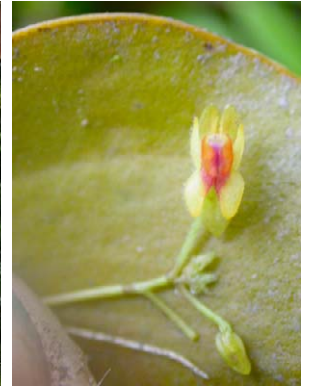
22 *Lepanthes magnifica*



23 *Lepanthes magnifica*



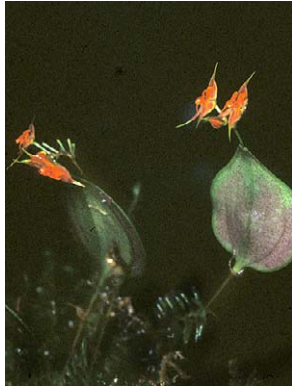
24 *Lepanthes mastodon*



25 *Lepanthes pecunialis*



26 *Lepanthes cf. readii*



27 *Lepanthes* sp.



28 *Lepanthes* sp.



29 *Masdevallia anchaeta*



30 *Masdevallia anchaeta*



31 *Masdevallia cucullata*



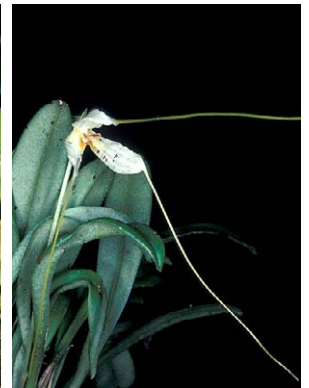
32 *Masdevallia nidifica*



33 *Masdevallia nidifica*



34 *Masdevallia ophioglossa*



35 *Masdevallia picturata*



36 *Masdevallia ventricularia*



37 *Masdevallia ximena*



38 *Platystele gaileana*



39 *Platystele* sp.



40 *Pleurothallis bivalvis*

Los Cedros Reserve, Imbabura, ECUADOR

PLEUROTHALLID ORCHIDS of Los Cedros

Lorena Endara –Univ. of Florida, Stig Dalstrom, & Alex Reynolds

All photos by L. Endara, S. Dalstrom, & Alex Reynolds, except where noted.

Produced by: R. B. Foster & T. S. Wachter; with support from the Andrew Mellon Foundation and Ellen Hyndman Fund.

© L. Endara [clendara@hotmail.com] Dept. of Biology, Univ. of Florida, Gainesville, FL USA; S. Dalstrom; A. Reynolds.

© Environmental & Conservation Programs, The Field Museum, Chicago, IL 60605 USA. [RRC@fmnh.org] [http://www.fmn.org/plantguides/] Rapid Color Guide #228 TRIAL02 09/2009



41 *Pleurothallis cordifolia*



42 *Pleurothallis crossota*



43 *Pleurothallis crucifera*



44 *Pleurothallis deflexa*



45 *Pleurothallis dibolia*



46 *Pleurothallis dunstervillei*



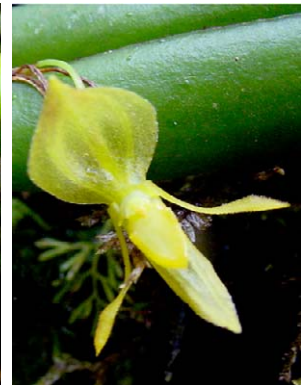
47 *Pleurothallis dunstervillei*



48 *Pleurothallis ensata*



49 *Pleurothallis macra*



50 *Pleurothallis macra*



51 *Pleurothallis peryi*



52 *Porroglossum* cf. *hoeijeri*



53 *Porroglossum lorenae*



54 *Porroglossum* sp.



55 *Scaphosepalum beluosum*



56 *Scaphosepalum decorum*



57 *Scaphosepalum decorum*



58 *Scaphosepalum digitale*



59 *Scaphosepalum dodsonii*



60 *Scaphosepalum dodsonii*

Los Cedros Reserve, Imbabura, ECUADOR

PLEUROTHALLID ORCHIDS of Los Cedros

Lorena Endara –Univ. of Florida, Stig Dalstrom, & Alex Reynolds

All photos by L. Endara, S. Dalstrom, & Alex Reynolds, except where noted.

Produced by: R. B. Foster & T. Wachter; with support from the Andrew Mellon Foundation and Ellen Hyndman Fund.

© L. Endara [clendara@hotmail.com] Dept. of Biology, Univ. of Florida, Gainesville, FL USA; S. Dalstrom; A. Reynolds.

© Environmental & Conservation Programs, The Field Museum, Chicago, IL 60605 USA. [RRC@fmnh.org] [http://www.fmnh.org/plantguides/] Rapid Color Guide #228 TRIAL02 09/2009



21 *Scaphosepalum ophidion*



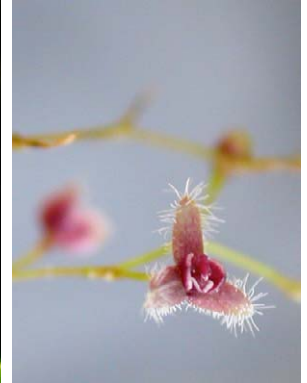
22 *Scaphosepalum ophidion*



23 *Stelis acutilabia*



24 *Stelis argentata*



25 *Stelis concinna*



26 *Stelis hirtzii*



27 *Stelis hirtzii*



28 *Stelis microchila*



29 *Stelis oblongifolia*



30 *Stelis piperina*



31 *Stelis striolata*



32 *Stelis superbiens*



33 *Stelis vulcanica*



34 *Stelis vulcanica*



35 *Trichosalpinx* sp.



36 *Trichosalpinx* sp.



37 *Trisetella dalstroemii*



38 *Trisetella dalstroemii*



39 *Zootrophion argus*



40 *Zootrophion dayanum*