

Arusha National Park (ANAPA), Arusha District, TANZANIA Common PLANTS of MOUNT MERU

Neduvoto Piniel Mollel¹, John Elia¹, Daniel Sitoni¹, Canisius Kayombo²

¹National Herbarium of Tanzania, TPRI, Arusha; ²Forestry Training Institute Olmotonyi, Arusha

Photos by R. Foster, except where indicated. Produced by R. Foster, T. Wachter, J. Philipp, with support from Connie Keller, E. Hyndman Fund, & A. Mellon Foundation.

© N.P. Mollel [neduvotomollel@yahoo.com], J. Elia [johnelia@yahoo.com], & D. Sitoni. Field assistance: park ranger Sabato Mutobha (ANAPA), Boniface Morembwa, & Tyana Wachter.

© Environmental & Conservation Programs, The Field Museum, Chicago, IL 60605 USA [rrc@fieldmuseum.org] [http://fieldmuseum.org/IDtools/] **Rapid Color Guide # 329** version 1 02/2012



1 **Justicia**
ACANTHACEAE



2 **Peucedanum cf.**
APIACEAE



3 **Sanicula elata**
APIACEAE



4 **Carduus**
ASTERACEAE



5 **Dendrosenecio**
ASTERACEAE



6 **Echinops**
ASTERACEAE



7 **Helichrysum**
ASTERACEAE



8 **Tagetes minuta**
ASTERACEAE



9
ASTERACEAE



10
ASTERACEAE



11
ASTERACEAE



12 **Impatiens papilionacea?**
BALSAMINACEAE



13 **Berberis holstii**
BERBERIDACEAE



14 **Lobelia deckenii**
CAMPANULACEAE



15 **Lobelia giberroa**
CAMPANULACEAE



16 **Lobelia holstii**
CAMPANULACEAE



17 **Sedum**
CRASSULACEAE



18 **Juniperus procera**
CUPRESSACEAE



19 **Juniperus procera**
CUPRESSACEAE



20 **Juniperus procera**
CUPRESSACEAE

Arusha National Park (ANAPA), Arusha District, TANZANIA Common PLANTS of MOUNT MERU

Neduvoto Piniel Mollel¹, John Elia¹, Daniel Sitoni¹, Canisius Kayombo²

¹National Herbarium of Tanzania, TPRI, Arusha; ²Forestry Training Institute Olmotonyi, Arusha

Photos by R. Foster, except where indicated. Produced by R. Foster, T. Wachter, J. Philipp, with support from Connie Keller, E. Hyndman Fund, & A. Mellon Foundation.

© N.P. Mollel [neduvotomollel@yahoo.com], J. Elia [johnelia@yahoo.com], & D. Sitoni. Field assistance: park ranger Sabato Mutobha (ANAPA), Boniface Morembwa, & Tyana Wachter.

© Environmental & Conservation Programs, The Field Museum, Chicago, IL 60605 USA [rrc@fieldmuseum.org] [http://fieldmuseum.org/IDtools/] **Rapid Color Guide # 329** version 1 02/2012



21 **Cyperus**
CYPERACEAE



22 **Agarista salicifolia**
ERICACEAE



23 **Agarista salicifolia**
ERICACEAE



24 **Agarista salicifolia**
ERICACEAE



25
ERICACEAE



26
ERICACEAE



27
ERICACEAE



28
ERICACEAE



29 **Bridelia**
EUPHORBIACEAE



30 **Bridelia**
EUPHORBIACEAE



31 **Bridelia**
EUPHORBIACEAE



32 **Euphorbia**
EUPHORBIACEAE



33 **Phyllanthus**
EUPHORBIACEAE



34 **Adenocarpus**
FABACEAE-PAPILIONID.



35 **Crotalaria**
FABACEAE-PAPILIONID.



36 **Crotalaria**
FABACEAE-PAPILIONID.



37 **Desmodium repandum**
FABACEAE-PAPILIONID.



38 **Indigofera spicata**
FABACEAE-PAPILIONID.



39 **Indigofera**
FABACEAE-PAPILIONID.



40 **Lathyrus**
FABACEAE-PAPILIONID.

Arusha National Park (ANAPA), Arusha District, TANZANIA Common PLANTS of MOUNT MERU

Neduvoto Piniel Mollel¹, John Elia¹, Daniel Sitoni¹, Canisius Kayombo²

¹National Herbarium of Tanzania, TPRI, Arusha; ²Forestry Training Institute Olmotonyi, Arusha

Photos by R. Foster, except where indicated. Produced by R. Foster, T. Wachter, J. Philipp, with support from Connie Keller, E. Hyndman Fund, & A. Mellon Foundation.

© N.P. Mollel [neduvotomollel@yahoo.com], J. Elia [johnelia@yahoo.com], & D. Sitoni. Field assistance: park ranger Sabato Mutobha (ANAPA), Boniface Morembwa, & Tyana Wachter.

© Environmental & Conservation Programs, The Field Museum, Chicago, IL 60605 USA [rrc@fieldmuseum.org] [http://fieldmuseum.org/IDtools/] **Rapid Color Guide # 329** version 1 02/2012



41 **Trifolium**
FABACEAE-PAPILIONID.



42 **Trifolium**
FABACEAE-PAPILIONID.



43
FABACEAE-PAPILIONID.



44
FABACEAE-PAPILIONID.



45 **Geranium**
GERANIACEAE



46 **Hypericum revolutum**
HYPERICACEAE



47 **Hypericum revolutum**
HYPERICACEAE



48 **Gladiolus watsonioides**
IRIDACEAE



49
IRIDACEAE



50
LAMIACEAE



51 **Nuxia congesta**
LOGANIACEAE



52 **Nuxia congesta**
LOGANIACEAE



53 **Englerina?**
LORANTHACEAE



54 **Bersama abyssinica**
MELIANTHACEAE



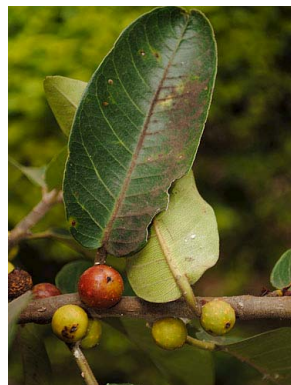
55 **Bersama abyssinica**
MELIANTHACEAE



56 **Stephania abyssinica**
MENISPERMACEAE



57 **Ficus thonningii**
MORACEAE



58 **Ficus thonningii**
MORACEAE



59 **Myrsine melanophloeos**
MYRSINACEAE



60
ORCHIDACEAE

Arusha National Park (ANAPA), Arusha District, TANZANIA Common PLANTS of MOUNT MERU

Neduvoto Piniel Mollel¹, John Elia¹, Daniel Sitoni¹, Canisius Kayombo²

¹National Herbarium of Tanzania, TPRI, Arusha; ²Forestry Training Institute Olmotonyi, Arusha

Photos by R. Foster, except where indicated. Produced by R. Foster, T. Wachter, J. Philipp, with support from Connie Keller, E. Hyndman Fund, & A. Mellon Foundation.

© N.P. Mollel [neduvotomollel@yahoo.com], J. Elia [johnelia@yahoo.com], & D. Sitoni. Field assistance: park ranger Sabato Mutobha (ANAPA), Boniface Morembwa, & Tyana Wachter.

© Environmental & Conservation Programs, The Field Museum, Chicago, IL 60605 USA [rrc@fieldmuseum.org] [http://fieldmuseum.org/IDtools/] **Rapid Color Guide # 329** version 1 02/2012



61 **Oxalis**
OXALIDACEAE



62 **Peperomia**
PIPERACEAE



63 **Plantago palmata**
PLANTAGINACEAE



64 **Podocarpus gracilior**
PODOCARPACEAE



65 **Podocarpus gracilior**
PODOCARPACEAE



66 **Rumex usambarensis**
POLYGONACEAE



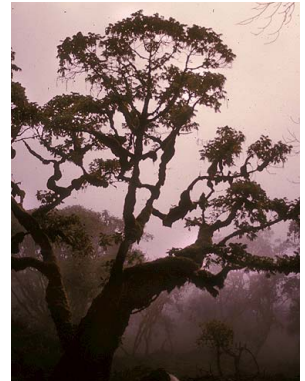
67 **Ranunculus**
RANUNCULACEAE



68 **Rhamnus**
RHAMNACEAE



69 **Alchemilla**
ROSACEAE



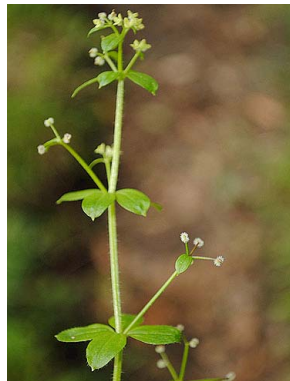
70 **Hagenia abyssinica**
ROSACEAE



71 **Hagenia abyssinica**
ROSACEAE



72 **Rubus**
ROSACEAE



73 **Galium**
RUBIACEAE



74 **Oldenlandia monanthos**
RUBIACEAE



75 **Rubia cordifolia**
RUBIACEAE



76 **Teclea simplicifolia**
RUTACEAE



77 **Dodonea viscosa**
SAPINDACEAE



78 **Deinbollia kilimandscharica**
SAPINDACEAE



79 **Cynium**
SCROPHULARIACEAE



80 **Hebenstretia dentata**
SCROPHULARIACEAE

Arusha National Park (ANAPA), Arusha District, TANZANIA Common PLANTS of MOUNT MERU

Neduvoto Piniel Mollel¹, John Elia¹, Daniel Sitoni¹, Canisius Kayombo²

¹National Herbarium of Tanzania, TPRI, Arusha; ²Forestry Training Institute Olmotonyi, Arusha

Photos by R. Foster, except where indicated. Produced by R. Foster, T. Wachter, J. Philipp, with support from Connie Keller, E. Hyndman Fund, & A. Mellon Foundation.

© N.P. Mollel [neduvotomollel@yahoo.com], J. Elia [johnelia@yahoo.com], & D. Sitoni. Field assistance: park ranger Sabato Mutobha (ANAPA), Boniface Morembwa, & Tyana Wachter.

© Environmental & Conservation Programs, The Field Museum, Chicago, IL 60605 USA [rrc@fieldmuseum.org] [http://fieldmuseum.org/IDtools/] **Rapid Color Guide # 329** version 1 02/2012



81 *Verbascum brevipedicellatum*
SCROPHULARIACEAE



82
SCROPHULARIACEAE



83 *Sparrmannia ricinocarpa*
TILIACEAE



84
URTICACEAE



85 *Urtica massaica*
URTICACEAE



86 *Viola abyssinica* cf.
VIOLACEAE



87 *Kniphofia thomsonii*
XANTHORRHOACEAE



88 *Kniphofia thomsonii*
XANTHORRHOACEAE



89
?



90
?



91 *Asplenium*
PTERIDOPHYTE



92 *Asplenium*
PTERIDOPHYTE



93 *Cheilanthes farinosa*
PTERIDOPHYTE



94 *Drynaria volkensii*
PTERIDOPHYTE



95 *Pleopeltis*
PTERIDOPHYTE



96 *Pteridium aquilinum*
PTERIDOPHYTE



97 *Pteris cretica*
PTERIDOPHYTE



98 *Pteris*
PTERIDOPHYTE



99 *Selaginella*
PTERIDOPHYTE



100 *Usnea*
LICHEN