

**ORCHIDACEAE of semi-deciduous seasonal forest in Viçosa,  
Minas Gerais State, southeastern BRAZIL**

1

Rúbia Santos Fonseca<sup>1</sup>, Flávia Aparecida dos Santos<sup>1</sup>, Luiz Menini Neto<sup>2</sup> & Milene Faria Vieira<sup>1</sup>

<sup>1</sup>Universidade Federal de Viçosa, Viçosa, MG, <sup>2</sup>Centro de Ensino Superior de Juiz de Fora, Juiz de Fora, MG.

Photos by R.S. Fonseca. Acknowledgements: Fundação de Amparo à Pesquisa do estado de Minas Gerais (FAPEMIG)

© Rúbia S. Fonseca [rubiafonseca@hotmail.com].

[662] version 1

02/2015



1 *Aspidogyne hylibates*



2 *Aspidogyne hylibates*



3 *Aspidogyne hylibates*



4 *Aspidogyne hylibates*



5 *Aspidogyne hylibates*



6 *Catasetum cernuum*



7 *Catasetum cernuum*



8 *Catasetum cernuum*



9 *Catasetum cernuum*



10 *Catasetum hookeri*



11 *Catasetum hookeri*



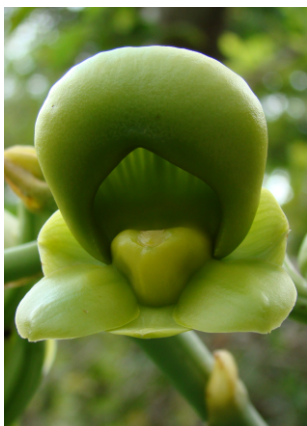
12 *Catasetum hookeri*



13 *Catasetum hookeri*



14 *Catasetum hookeri*



15 *Catasetum hookeri*



16 *Corymborkis flava*



17 *Corymborkis flava*



18 *Corymborkis flava*



19 *Corymborkis flava*



20 *Corymborkis flava*

**ORCHIDACEAE of semi-deciduous seasonal forest in Viçosa,  
Minas Gerais State, southeastern BRAZIL**

Rúbia Santos Fonseca<sup>1</sup>, Flávia Aparecida dos Santos<sup>1</sup>, Luiz Menini Neto<sup>2</sup> & Milene Faria Vieira<sup>1</sup>

<sup>1</sup>Universidade Federal de Viçosa, Viçosa, MG, <sup>2</sup>Centro de Ensino Superior de Juiz de Fora, Juiz de Fora, MG.

Photos by R.S. Fonseca. Acknowledgements: Fundação de Amparo à Pesquisa do estado de Minas Gerais (FAPEMIG)

© Rúbia S. Fonseca [rubiafonseca@hotmail.com].

[662] version 1

02/2015



21 *Cyclopogon variegatus*



22 *Cyclopogon variegatus*



23 *Cyclopogon variegatus*



24 *Cyclopogon variegatus*



25 *Cyclopogon variegatus*



26 *Eulophia alta*



27 *Eulophia alta*



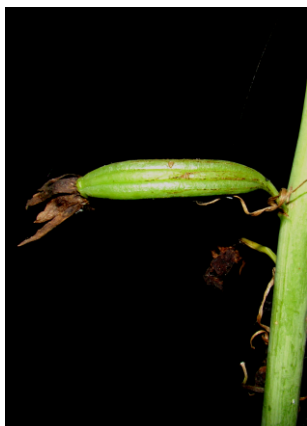
28 *Eulophia alta*



29 *Eulophia alta*



30 *Eulophia alta*



31 *Eulophia alta*



32 *Galeandra beyrichii*



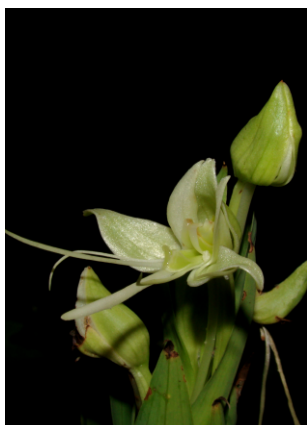
33 *Galeandra beyrichii*



34 *Galeandra beyrichii*



35 *Habenaria macronectar*



36 *Habenaria macronectar*



37 *Habenaria macronectar*



38 *Habenaria petalodes*



39 *Habenaria petalodes*



40 *Habenaria petalodes*

**ORCHIDACEAE of semi-deciduous seasonal forest in Viçosa,  
Minas Gerais State, southeastern BRAZIL**

**Rúbia Santos Fonseca<sup>1</sup>, Flávia Aparecida dos Santos<sup>1</sup>, Luiz Menini Neto<sup>2</sup> & Milene Faria Vieira<sup>1</sup>**

<sup>1</sup>Universidade Federal de Viçosa, Viçosa, MG, <sup>2</sup>Centro de Ensino Superior de Juiz de Fora, Juiz de Fora, MG.

Photos by **R.S. Fonseca**. Acknowledgements: Fundação de Amparo à Pesquisa do estado de Minas Gerais (FAPEMIG)

© **Rúbia S. Fonseca** [rubiafonseca@hotmail.com].

[662] version 1

02/2015



**41** *Oeceoclades maculata*



**42** *Oeceoclades maculata*



**43** *Oeceoclades maculata*



**44** *Oeceoclades maculata*



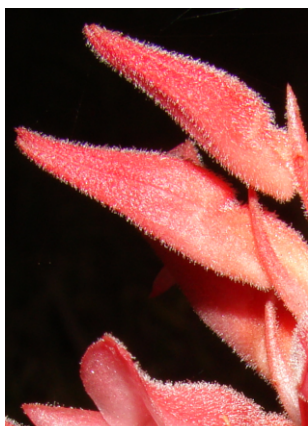
**45** *Sacoila lanceolata*



**46** *Sacoila lanceolata*



**47** *Sacoila lanceolata*



**48** *Sacoila lanceolata*



**49** *Sacoila lanceolata*



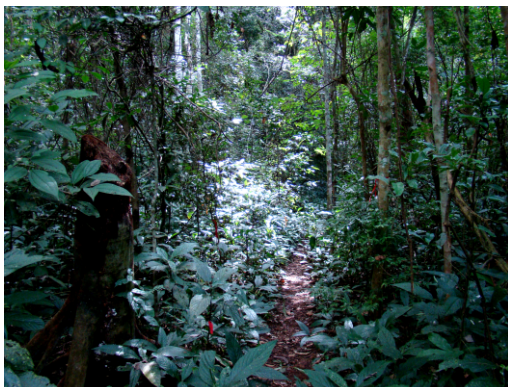
**50** *Sacoila lanceolata*



**51** General view of canopy of semi-deciduous seasonal forest



**52** The forest understory



**53** The forest understory



**54** The forest understory