

Key Species of Black Oak Savannas in Pembroke Township, Kankakee County, Illinois

The Field Museum - Science Action Center, Illinois Department of Natural Resources

Produced by: John Balaban, Erika Hasle, Rebecca Collings, Kim Roman

Photos by: J. Armstrong, J. & J. Balaban, C. Benda, R. Collings, K. Stiver Corio, C. Cunningham, P. Dacko, J. Engel, S. Frishcie, B. Glass, J. Goldner, J. Kirkhart, M. Lavin, F. Morel, D. Mullen, A. Nyboer, A. Panzer, R. Panzer, M. Redmer, P. Ridgley, K. Roman, P. Rothrock, © 2014 The Field Museum, Chicago, IL 60605 USA fieldguides.fieldmuseum.org/

version 01

12/2014



01 *Accipiter cooperii*
COOPER'S HAWK



02 *Melanerpes erythrocephalus*
RED-HEADED WOODPECKER



03 *Sialia sialis*
EASTERN BLUEBIRD



04 *Colinus virginianus*
NORTHERN BOBWHITE



05 *Pipilo erythrophthalmus*
EASTERN TOWHEE



06 *Mimus polyglottos*
MOCKINGBIRD



07 *Scolopax minor*
AMERICAN WOODCOCK



08 *Coccyzus americanus*
YELLOW-BILLED CUCKOO



09 *Chondestes grammacus*
LARK SPARROW



10 *Ambystoma tigrinum*
TIGER SALAMANDER



11 *Bufo fowleri*
FOWLER'S TOAD



12 *Hyla versicolor*
GREY TREEFROG



13 *Terrapene ornata ornata*
ORNATE BOX TURTLE



14 *Pituophis catenifer sayi*
BULLSNAKE



15 *Heterodon platirhinos*
EASTERN HOGNOSE SNAKE



16 *Coluber constrictor foxii*
BLUE RACER



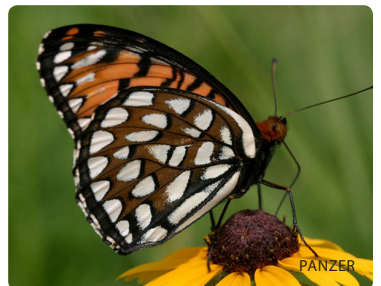
17 *Cnemidophorus sexlineatus*
SIX-LINED RACERUNNER



18 *Ophisaurus attenuatus*
SLENDER GLASS LIZARD



19 *Geomys bursarius*
PLAINS POCKET GOPHER



20 *Speyeria idalia*
REGAL FRITILLARY
BUTTERFLY

Key Species of Black Oak Savannas in Pembroke Township Illinois

Common Species of Pembroke Township

The Field Museum - Science Action Center , Illinois Department of Natural Resources

Produced by: John Balaban, Erika Hasle, Rebecca Collings, Kim Roman

Photos by: J. Armstrong, J. & J. Balaban, C. Benda, R. Collings, K. Stiver Corio, C. Cunningham, P. Dacko, J. Engel, S. Frishcie, B. Glass, J. Goldner, J. Kirkhart, M. Lavin, F. Morel, D. Mullen, A. Nyboer, R. Panzer, R. Pauzer, M. Redmer, P. Ridgley, K. Roman, P. Rothrock, © 2014 The Field Museum, Chicago, IL 60605 USA

idtools.fieldmuseum.org/

version 01

12/2014



01 *Quercus velutina*
BLACK OAK



02 *Quercus velutina*
BLACK OAK LEAF & ACORN



03 *Quercus palustris*
PIN OAK



04 *Quercus palustris*
PIN OAK LEAF & ACORN



05 *Sassafras albidum*
SASSAFRAS



06 *Quercus alba*
WHITE OAK BARK



07 *Quercus alba*
WHITE OAK LEAF & ACORN



08 *Populus tremuloides*
QUAKING ASPEN BARK



09 *Populus tremuloides*
QUAKING ASPEN LEAF



10 *Betula nigra*
RIVER BIRCH



11 *Rhus copallina*
WINGED SUMAC



12 *Rhus typhina*
STAGHORN SUMAC



13 *Rosa carolina*
PASTURE ROSE



14 *Amorpha canescens*
LEADPLANT



15 *Ceanothus americanus*
NEW JERSEY TEA



16 *Spirea tomentosa rosea*
STEEPLE BUSH



17 *Vaccinium angustifolium*
EARLY LOWBUSH
BLUEBERRY



18 *Pteridium aquilinum lat.*
BRACKEN FERN



19 *Osmunda cinnamomea*
CINNAMON FERN



20 *Onoclea sensibilis*
SENSITIVE FERN

Key Species of Black Oak Savannas in Pembroke Township Illinois

Common Species of Pembroke Township

The Field Museum - Science Action Center , Illinois Department of Natural Resources

Produced by: John Balaban, Erika Hasle, Rebecca Collings, Kim Roman

Photos by: J. Armstrong, J. & J. Balaban, C. Benda, R. Collings, K. Stiver Corio, C. Cunningham, P. Dacko, J. Engel, S. Frishcie, B. Glass, J. Goldner, J. Kirkhart, M. Lavin, F. Morel, D. Mullen, A. Nyboer, A. Nyboer, R. Panzer, R. Pauzer, M. Redmer, P. Ridgley, K. Roman, P. Rothrock, © 2014 The Field Museum, Chicago, IL 60605 USA idtools.fieldmuseum.org/ version 01

12/2014



21 *Koeleria cristata*
JUNE GRASS



22 *Schizachyrium scoparium*
LITTLE BLUESTEM



23 *Andropogon gerardii*
BIG BLUESTEM



24 *Stipa spartea*
PORCUPINE GRASS



25 *Carex pensylvanica*
PENNSYLVANIA SEDGE



26 *Opuntia humifusa*
PRICKLY PEAR



27 *Asclepias syriaca*
COMMON MILKWEED



28 *Asclepias tuberosa*
BUTTERFLY MILKWEED



29 *Asclepias amplexicaulis*
SAND MILKWEED



30 *Viola pedata*
BIRD'S FOOT VIOLET



31 *Lupinus perennis*
WILD LUPINE



32 *Lithospermum croceum*
HAIRY PUCCOON



33 *Coreopsis lanceolata*
SAND COREOPSIS



34 *Commandra umbellata*
FALSE TOADFLAX



35 *Phlox*
SAND PHLOX



36 *Tephrosia virginiana*
GOAT'S RUE



37 *Smilacina stellata*
STARRY FALSE
SOLOMON'S SEAL



38 *Smilacina racemosa*
FALSE SOLOMON'S SEAL



39 *Commelina erecta*
NARROW-LEAVED
DAY FLOWER



40 *Hypericum adpressum*
SHORE ST. JOHN'S
WORT

Key Species of Black Oak Savannas in Pembroke Township Illinois

Common Species of Pembroke Township

The Field Museum - Science Action Center , Illinois Department of Natural Resources

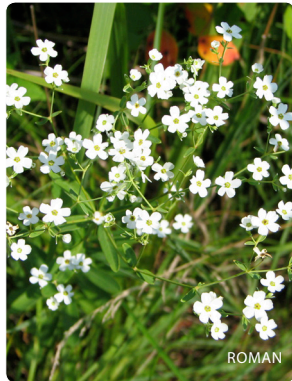
Produced by: John Balaban, Erika Hasle, Rebecca Collings, Kim Roman

Photos by: J. Armstrong, J. & J. Balaban, C. Benda, R. Collings, K. Stiver Corio, C. Cunningham, P. Dacko, J. Engel, S. Frishcie, B. Glass, J. Goldner, J. Kirkhart, M. Lavin, F. Morel, D. Mullen, A. Nyboer, A. Nyboer, R. Panzer, R. Pauzer, M. Redmer, P. Ridgley, K. Roman, P. Rothrock, © 2014 The Field Museum, Chicago, IL 60605 USA idtools.fieldmuseum.org/ version 01

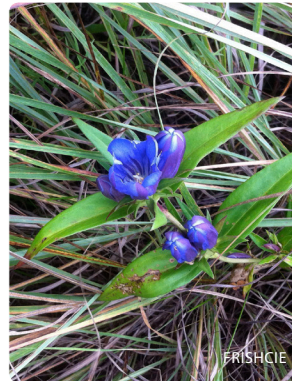
12/2014



41 *Tradescantia ohiensis*
COMMON SPIDERWORT



42 *Euphorbia corollata*
FLOWERING SPURGE



43 *Gentiana saponaria*
SOAPWORT GENTIAN



44 *Baptisia leucantha*
WHITE WILD INDIGO



45 *Lespedeza capitata*
ROUND-HEADED BUSH CLOVER



46 *Monarda punctata*
HORSEMINT



47 *Monarda fistulosa*
WILD BERGAMOT



48 *Chamaecrista fasciculata*
PARTRIDGE PEA



49 *Aureolaria pedicularia*
CLAMMY FALSE FOXGLOVE



50 *Scrophularia lanceolata*
EARLY FIGWORT



51 *Symphyotrichum oolentangiense*
SKY-BLUE ASTER



52 *Ionactis linariifolius*
FLAX-LEAVED ASTER



53 *Symphyotrichum novae-angliae*
NEW ENGLAND ASTER



54 *Solidago speciosa*
SHOWY GOLDENROD



55 *Helianthus occidentalis*
WESTERN SUNFLOWER



56 *Liatris aspera*
ROUGH BLAZING STAR



57 *Parthenium integrifolium*
WILD QUININE



58 *Veronicastrum virginicum*
CULVER'S ROOT



59 *Verbena hastata*
BLUE VERVAIN



60 *Vernonia missurica*
MISSOURI IRONWEED