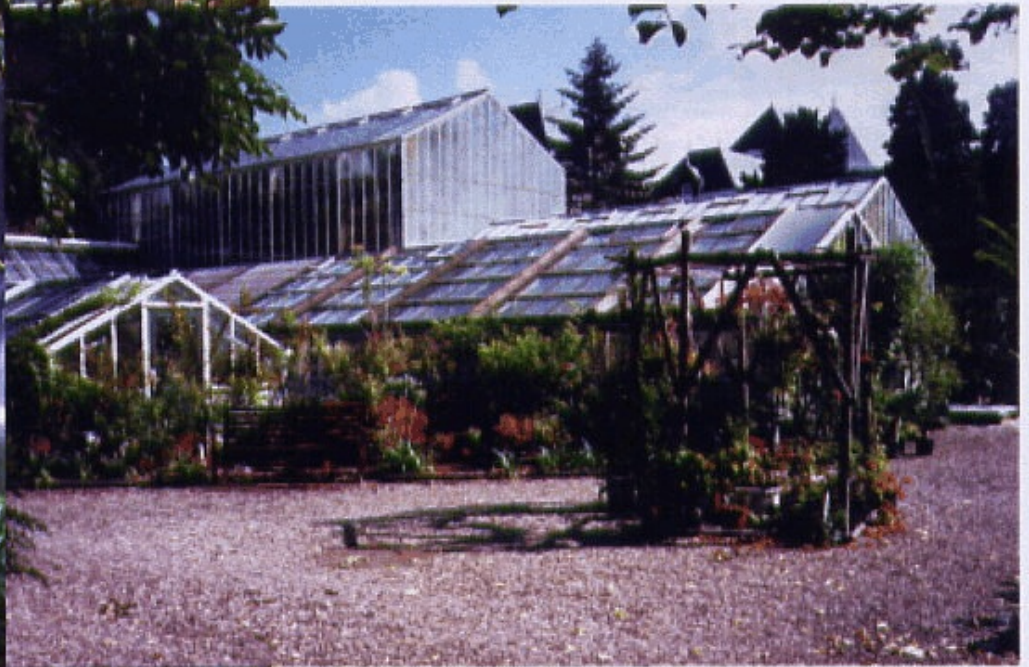


# Index Seminar 2012/2013



Botanic Garden of  
the Delft University  
of Technology



and

Burgers' Zoo, Arnhem

**Botanic Garden, Biotechnology Dept.,  
Delft University of Technology  
Julianalaan 67  
NL-2628 BC DELFT  
The Netherlands**

Tel.: +31 (0)15 278 2356

Fax: +31 (0)15 278 2355

email: [botanischetuin@tudelft.nl](mailto:botanischetuin@tudelft.nl)

[www.botanischetuin.tudelft.nl](http://www.botanischetuin.tudelft.nl)

**email for desiderata:  
curators-office-botanic-garden@tudelft.nl**

Director: drs. ing. Bob Ursem  
Curator: drs. Bert van den Wollenberg  
Head of Gardening: Erwin Kluver  
Education Ir. Bertus van der Meijden  
Gerard van der Veen

Seed collecting & cleaning:

Astrid Aarssen

**Burgers' Bush & Zoo  
Antoon van Hooffplein 1  
NL-6816 SH Arnhem  
Netherlands**

(please do not send your desiderata to this address!)

+31 (0)26 442 45 34

[info@burgerszoo.nl](mailto:info@burgerszoo.nl) (Not for desiderata!)

[www.burgerszoo.nl](http://www.burgerszoo.nl)

Curator: Willeke Huizinga

Seed collecting & cleaning:

Ernst Kamphuis

**Index Seminar 2012/2013**  
**Botanic Garden, Biotechnology Dept.,**  
**Delft University of Technology**  
**&**  
**Index Seminar 2012/2013,**  
**Burgers' Bush & Zoo**

**Please note:**

In response to continually rising expenses for printed seed lists, and in order to reduce our ecological footprint, **we have switched to electronic seed lists only, as of December 2011. Since then we no longer send printed copies.**

***Send your email address to: [curators-office-botanic-garden@tudelft.nl](mailto:curators-office-botanic-garden@tudelft.nl)***

Deadline for ordering: April 1, 2013

contents:

Important notes for ordering	p. 4
Part 1: Botanic Garden, Biotechnology Dept., Delft Univ. of Technology	p. 6
Part 2: Burgers' Bush & Zoo, Arnhem	p. 12

## Important notes for ordering

### Phytosanitary regulations:

**EU:** All seed can be sent to addresses in the EU.

**Outside the EU:** please contact your Plant Health Department to check what can be imported into your country. **Enclose an necessary import permits, and list the species that you request.**

### Convention on Biological Diversity

In response to the Convention on Biological Diversity (CBD), and the Nagoya Protocol, we supply seeds and other plant material only in accordance with the IPEN Code of Conduct for Botanic Gardens.

### IPEN: International Plant Exchange Network

IPEN membership allows exchange with other IPEN-members without bi-lateral agreements. For a list of current IPEN-members check the web-site of Botanic Gardens Conservation International (BGCI) at [www.bgci.org/resources/ipen](http://www.bgci.org/resources/ipen).

**IPEN members** may order either by email or by ordinary mail; no signed agreement is required.

**non-IPEN members** may order either by email or by ordinary mail, but the order must be accompanied by a signed and stamped agreement or in the form scanned document of the signed agreement.

**Seeds offered in the Index Seminum are not available to private individuals or commercial parties.**

Further information on **Origin codes** used in the seed list

- G garden origin
- Z seeds of cultivated plants of wild origin; “indirectly from the wild”. These seeds originate from plant of wild origin within our collections, but since these seeds constitute generative propagation, the provenance code is depreciated (“devaluated”) by one level.

### 1. **Global seed list search system** ([www.plantnetwork.org/ebg/](http://www.plantnetwork.org/ebg/)):

By including an agreed code word in your electronic seed list and putting it on your website, you join the global seed list search. The agreed code word for this 2012/2013 season is **ebgconsortiumindexseminum2013**. In this way you both assist and profit from the global seed search. If you look for a particular, hard-to-find plant species, use the Global seed list search system (courtesy Matthew Jebb, Glasnevin, Ireland).



## 2. Explanation of the structure of the IPEN numbers used:

The IPEN number consists of 4 parts, e.g. IPEN XX-0-DELF-954000070:

- ▶ XX: XX is used seeds of plants of non-wild origin. In case of wild collected plants, or plants of known wild origin, the 2-character country code is used (ISO 2-alpha, see <http://www.unc.edu/~rowlett/units/codes/country.htm>, e.g. NL for Netherlands.
- ▶ 0 (or 1): if restrictions apply: “0”=NO, “1”=YES.
- ▶ acronym for Delft (see [www.bgci.org/garden\\_search.php](http://www.bgci.org/garden_search.php)) for garden acronyms
- ▶ accession number in Delft (for more information)

### Angiosperm Phylogeny Group

We aim to implement APG-III for our nomenclature and together with Utrecht University Botanic Gardens are working on a PHP-database which will contain all accepted and synonym names from genus level up to the higher taxonomic levels, based on the APG3 publication in Phytotaxa vol. 19, Febr. 2011, which is freely available from <http://www.mapress.com/phytotaxa/content/2011/pt00019.htm>

This process is ongoing. This means that you may encounter inconsistencies in the family names used. We aim to be fully APG-3 compliant next year.

### Specialisations:

The Botanic Garden of Delft University of Technology specialises in the following plant groups:

Cannaceae	Heliconiaceae	Myristicaceae	Zingiberaceae
Cercidiphyllaceae	Lavandula	Platanaceae	
Costaceae	Marantaceae	Strelitziaceae	Technical (useful) plants
Eucommiaceae	Menispermaceae	Theaceae	
Hamamelidaceae	Musaceae	Thymelaeaceae	

We welcome cooperation with other botanic gardens that also have developed specialisations in one or more of these plant groups. Please contact the Curator at [l.j.w.vandenwollenberg@tudelft.nl](mailto:l.j.w.vandenwollenberg@tudelft.nl).

**Some seeds are available in a limited amount only, and since we process seed orders in chronological order, these will most likely not be available anymore if you order late:**

- \* **available in short supply (less than 10 seed envelopes)**
- \*\* **available in very short supply (less than 5 seed envelopes)**

**Index Seminum 2012/2013 Part 1:  
Botanic Garden, Biotechnology Dept.,  
Delft University of Technology**

## Amaryllidaceae

1. G *Allium sativum* [XX-0-DELFT-1973V18044]
2. G *Allium scorodoprasum subsp. scorodoprasum* [DE-0-BONN-18926]  
Germany, Bavaria, Fränkische Schweiz. 1995

## Anthericaceae

3. G *Chlorophytum inornatum* [XX-0-DELFT-1993GR02145]
4. G *Chlorophytum laxum* [XX-0-DELFT-2007GR0378]

## Apiaceae

5. G *Anthriscus cerefolium* [XX-0-DELFT-2010AB0708]
6. Z *Daucus carota subsp. carota* [DE-0-OLD-08-038-65-10]  
Germany, WE, Bad Zwischenahn, Kayhauserfeld, Goldene Linie.  
26/08/2008
7. G *Levisticum officinale* [XX-0-DELFT-2009-0268]
8. K *Myrrhis odorata* [XX-0-DELFT-1985V21012]

## Apocynaceae

9. G *Catharanthus trichophyllus* [XX-0-DELFT-2011GR0123]
10. G *Rauvolfia vomitoria* [XX-0-DELFT-822470004]

## Asteraceae

11. Z *Achillea millefolium* [DE-0-OLD-08-038-63-10]  
W.Germany, WE, Bad Zwischenahn, Kayhauserfeld, Goldene Linie.  
26/08/2008
12. Z *Aster alpinus* [AT-0-DELFT-2010-0286]  
Austria, Kärnten, Bärental. Alt.: 1250 m. 2009
13. Z *Centaurea jacea* [AT-0-DELFT-2010-0289]  
Austria, Niederösterreich, Ötscher. Alt.: 1856 m. 2009
14. G *Grindelia robusta* [XX-0-DELFT-2003V18199]
15. Z *Onopordum acanthium* [XX-0-DELFT-2010AB0344]  
Italy, Sarre, Brean. Alt.: 900 m. 2009

16. Z *Senecio viscosus* [DE-0-BHU-W-2008-119]  
Germany, Berlin, Schöneberg-Tempelhof, Südgelände. 2008
17. Z *Telekia speciosa* [AT-0-DELFF-2010-0292]  
Austria, Kärnten, Seebergsattel. Alt.: 1300 m. 2009
18. G *Tragopogon porrifolius* [XX-0-DELFF-2003V21203]

## Berberidaceae

19. G *Sinopodophyllum hexandrum* [XX-0-DELFF-1986V12036] (\*)

## Betulaceae

20. G *Betula ermanii* [XX-0-DELFF-1986V14006]
21. G *Betula pendula* [XX-0-DELFF-1986V14007]
22. G *Ostrya carpinifolia* [XX-0-DELFF-1990V17013]

## Boraginaceae

23. G *Tournefortia volubilis* [XX-0-DELFF-952520004]

## Caprifoliaceae

24. G *Diervilla coraeensis* [XX-0-DELFF-1977V04036]
25. G *Symphoricarpus orbiculatus* [XX-0-DELFF-1999V23007]
26. G *Triosteum pinnatifidum* [XX-0-DELFF-2007-0785]

## Chenopodiaceae

27. Z *Chenopodium bonus-henricus* [AT-0-DELFF-2007-0622]  
Austria, Salzburgerland, St. Koloman SE, Seewaldsee, Auerhütte, Alt.:  
1070 m. 06/2006

## Coriariaceae

28. G *Coriaria myrtifolia* [XX-0-DELFF-1989V22001]

## Costaceae

29. G *Costus afer* [XX-0-DELFF-2010GR0806]
30. G *Costus deistelii* [XX-0-DELFF-2010GR0807]
31. Z *Costus spec.* [GA-0-DELFF-2011GR0795]  
Gabon, Muyumba. Coll. by A.Louis
32. G *Costus talbotii* [XX-0-DELFF-2010GR0688]
33. G *Tapeinochilos spectabilis* [XX-0-DELFF-2010GR0175]

## Euphorbiaceae

34. G *Acalypha hispida* [XX-0-DELFF-861470031]

## Fabaceae

35. Z *Astragalus glycyphyllos* [AT-0-DELFF-2010-0373]  
Austria, Steiermark/Styria, Radmer an der Stube, Pfarralm. Alt.: 800 m.  
09/2009
36. G *Colutea arborescens* [XX-0-DELFF-1993V1015]
37. Z *Galega officinalis* [FR-0-DELFF-2010-0507]  
France, Département d'Ille -et-Vilaine, sub-sector Armoricaïn, Loire-  
Atlantique, Nantes, "Quai F. Mitterrand"
38. Z *Melilotus albus* [AT-0-DELFF-2010-0376]  
Austria, Salzburg, Salzburg-Stadt/Salzburg city, Liefering, Salzachsee E.  
Alt.: 410 m. 08/2009
39. Z *Melilotus altissimus* [DE-0-BONN-30411]  
Germany, Rheinland-Pfalz, Remagen, higher Rhine bank, near  
Oberwinter. 15/11/2009
40. G *Rhynchosia caribaea* [XX-0-DELFF-2000GR02170]
41. Z *Vicia cracca* [DE-0-OLD-08-038-86-10]  
Germany, Weser-Ems area, Bad Zwischenahn, Aschhauserfeld.  
10/09/2008

## Hamamelidaceae

42. G *Corylopsis sinensis* var. *sinensis* [XX-0-DELFF-2001V14097]
43. G *Distylium racemosum* [XX-0-DELFF-1976V07019]
44. G *Hamamelis japonica* var. *arborea* [XX-0-DELFF-1989V07076] (\*\*)
45. G *Hamamelis japonica* var. *flavo-purpurascens* [XX-0-DELFF-1980V07028]

## Iridaceae

46. G *Iris ensata* [XX-0-DELFF-004400047]
47. G *Iris pallida* [XX-0-DELFF-1999V22044]

## Juglandaceae

48. G *Juglans mandshurica* [XX-0-DELFF-006000015]



## Lamiaceae

49. G *Salvia hians* [XX-0-DELFF-1998V02102]  
 50. Z *Stachys sylvatica* [DE-0-OLD-08-040-26-10]  
 Germany, Weser-Ems area, Wiefelstede, Gristede. 10/09/2008

## Malvaceae

51. G *Abelmoschus esculentus* [XX-0-DELFF-2011GRAB0304]  
 52. G *Gossypium arboreum* [XX-0-DELFF-2007GR0799]  
 53. G *Gossypium barbadense* [XX-0-DELFF-2005GR02050]  
 54. G *Gossypium herbaceum* [XX-0-DELFF-2011GR0382]  
 55. G *Gossypium herbaceum var. religiosum* [XX-0-DELFF-201750028]  
 56. G *Gossypium raimondii* [XX-0-DELFF-2011GR0719] (\*)  
 57. G *Gossypium hirsutum* [XX-0-DELFF-031750031]  
 58. G *Hibiscus ludwigii* [XX-0-DELFF-2006GR06071]  
 59. G *Hibiscus mutabilis* [XX-0-DELFF-2005GR02054]  
 60. G *Kitabelia vitifolia* [XX-0-DELFF-1983V17004]  
 61. G *Sparrmannia africana* [XX-0-DELFF-1994KPS002]

## Marantaceae

62. G *Marantochloa leucantha* [XX-0-DELFF-024800081]

## Melanthiaceae

63. G *Paris quadrifolia* [XX-0-DELFF-873800059]

## Myrsinaceae

64. G *Ardisia crenata* [XX-0-DELFF-199803001]

## Myrtaceae

65. G *Eugenia pitanga* [XX-0-DELFF-012220055] (\*\*)  
 66. G *Eugenia uniflora* [XX-0-DELFF-2004GR0369] (\*\*)  
 67. G *Psidium guineense* [XX-0-DELFF-962220048]

## Oxalidaceae

68. G *Averrhoa bilimbi* [XX-0-DELFF-921300014]

## Paeoniaceae

69. G *Paeonia suffruticosa* [XX-0-DELFF-2002V12012]

## Passifloraceae

70. G *Passiflora suberosa* [XX-0-DELFF-002030003]

## Phyllanthaceae

71. G *Phyllanthus acidus* [XX-0-DELFF-931470087]

## Pinaceae

72. G *Larix kaempferi* [XX-0-DELFF-1980V15029]

## Poaceae

73. Z *Anthoxanthum odoratum* [AT-0-DELFF-2010-0392]  
Austria, Salzburg, Hallein S, Gamp, Gasting. Alt.: 480 m. 06/2009
74. Z *Cynosurus cristatus* [AT-0-DELFF-2010-0394]  
Austria, Salzburg, Osterhorngruppe, Gaißau NE, Latschenalm.  
Alt.: 1430 m. 08/2009

## Polygonaceae

75. Z *Rumex conglomeratus* [FR-0-DELFF-2010-0519]  
France, Département d'Ille -et-Vilaine, sub-sector Armoricaïn, Loire-Atlantique, Couëron, "Ile de la Liberté"
76. Z *Rumex obtusifolius* [FR-0-DELFF-2010-0522]  
France, Département d'Ille -et-Vilaine, sub-sector Armoricaïn, Loire-Atlantique, Nantes, "Prairies de Sèvre - Les Bourdonnières"

## Ranunculaceae

77. G *Aquilegia saximontana* [XX-0-DELFF-2007-0142]

## Rosaceae

78. G *Alchemilla vulgaris* [XX-0-DELFF-1998V18187]
79. Z *Geum urbanum* [FR-0-DELFF-2010-0446]  
France, BESANCON : Hauts de Chazal (DOUBS). Alt.: 280 m.  
15/09/2008

80. G *Mespilus germanica* [XX-0-DELFF-2011-0531]  
 81. G *Osteomeles anthyllidifolia* [XX-0-DELFF-1979KPS002] (\*\*)  
 82. G *Potentilla recta* [XX-0-DELFF-2003V01208]  
 83. G *Rosa canina* [XX-0-DELFF-2004V21220]

## Rubiaceae

84. G *Hamelia patens* [XX-0-DELFF-2007GR0202]

## Scrophulariaceae

85. G *Mimulus guttatus* [XX-0-DELFF-2008-0068]  
 86. Z *Scrophularia nodosa* [DE-0-DELFF-2010-0160], Germany, Niederrehein, Krefeld area.  
 87. Z *Verbascum nigrum* [FR-0-DELFF-2010AB0500]  
 France, Département d'Ille -et-Vilaine, Meillac. 23/09/2009

## Solanaceae

88. G *Atropa bella-donna* [XX-0-DELFF-1978V18010]  
 89. G *Mandragora officinarum* [XX-0-DELFF-1973V23001]

## Thymelaeaceae

90. G *Daphne tangutica* [XX-0-DELFF-2004V12003] (\*\*)

## Verbenaceae

91. G *Vitex agnus-castus* [XX-0-DELFF-1968V22008]

## Xanthorrhoeaceae

92. G *Gasteria disticha var. disticha* [XX-0-DELFF-003800138]

## Zingiberaceae

93. G *Alpinia galanga* [XX-0-DELFF-014600199] (\*\*)  
 94. G *Hedychium coronarium* [XX-0-DELFF-2005GR06127]  
 95. G *Hedychium forrestii* [XX-0-DELFF-1982GR05483]  
 96. G *Hedychium spicatum* [XX-0-DELFF-1980KPS049]  
 97. G *Hedychium yunnanense* [XX-0-DELFF-974600143]

## Index Seminum 2011/2012 Part 2: Burgers' Bush & Zoo

### Acanthaceae

101. G *Barleria oenotheroides* [XX-0-BURDI-ACANT008] (\*\*)  
102. G *Ruellia brevifolia* [XX-0-BURDI-ACANT047]

### Amaranthaceae

103. G *Pleuropetalum darwinii* [XX-0-BURDI-1986-1202-001]

### Amaryllidaceae

104. Z *Crinum spec.* [MG-0-BURDI-2003-1126007] (\*)  
Madagascar, no further details.

### Annonaceae

105. G *Annona glabra* [XX-0-BURDI-ANNON0036] (\*\*)  
106. G *Annona montana* [XX-0-BURDI-1998-0515001]

### Bromeliaceae

107. G *Pitcairnia undulata* [XX-0-BURDI-BROME092]

### Celastraceae

108. G *Salacia pallescens* [XX-0-BURDI-1983-1118031]

### Clusiaceae

109. G *Garcinia gardneriana* [XX-0-BURDI-1999-0922010] (\*\*)

### Commelinaceae

110. G *Palisota albertii* [XX-0-BURDI-19980407013] (\*)

### Costaceae

111. G *Costus zingiberoides* [XX-0-BURDI-19990825009] (\*\*)

## Fabaceae

112. G *Caesalpinia pulcherrima* [XX-0-BURDI-1989-1207001] (\*\*)

## Haemodoraceae

113. G *Schiekia orinocensis subsp. silvestris* [XX-0-BURDI-2005-0929019]

## Heliconiaceae

114. G *Heliconia episcopalis* [XX-0-BURDI-20060607002] (\*\*)

## Iridaceae

115. G *Neomarica caerulea* [XX-0-BURDI-20100521001]

## Lythraceae

116. G *Heimia salicifolia* [XX-0-BURDI-LYTHR033]

## Malvaceae

117. G *Ceiba pentandra* [XX-0-BURDI-20110420002]

118. G *Pavonia sepium* [XX-0-BURDI-MALVA018]

119. G *Theobroma cacao* [XX-0-BURDI-STERC011] (\*)

## Melastomataceae

120. G *Gravesia guttata* [XX-0-BURDI-2006-0914003]

## Meliaceae

121. G *Turraea heterophylla* [XX-0-BURDI-19861216005] (\*)

## Phyllanthaceae

122. G *Phyllanthus juglandifolius* [XX-0-BURDI-20070412001]

## Piperaceae

123. G *Piper obliquum* [XX-0-BURDI-PIPE008] (\*\*)

## Rutaceae

124. G *Erythrochiton brasiliensis* [XX-0-BURDI-1994-0406003]

## Thymelaeaceae

125. G *Phaleria octandra* [XX-0-BURDI-1992-0929002] (\*\*)

## Zingiberaceae

126. G *Hedychium borneense* [XX-0-BURDI-2001-0727001]  
127. G *Hedychium cylindricum* [XX-0-BURDI-2001-0727004]  
128. G *Hedychium longicornutum* [XX-0-BURDI-20090217001]  
129. G *Hedychium muluense* [XX-0-BURDI-1998-0220001]