



POWESHIEK COUNTY, IOWA.

STACY MAP PUBLISHERS — ROCKFORD, ILLINOIS
 "FARM & CITY MAPS EVERYWHERE"

BUSINESS AND
 PROFESSIONAL DIRECTOR
 ATTORNEYS

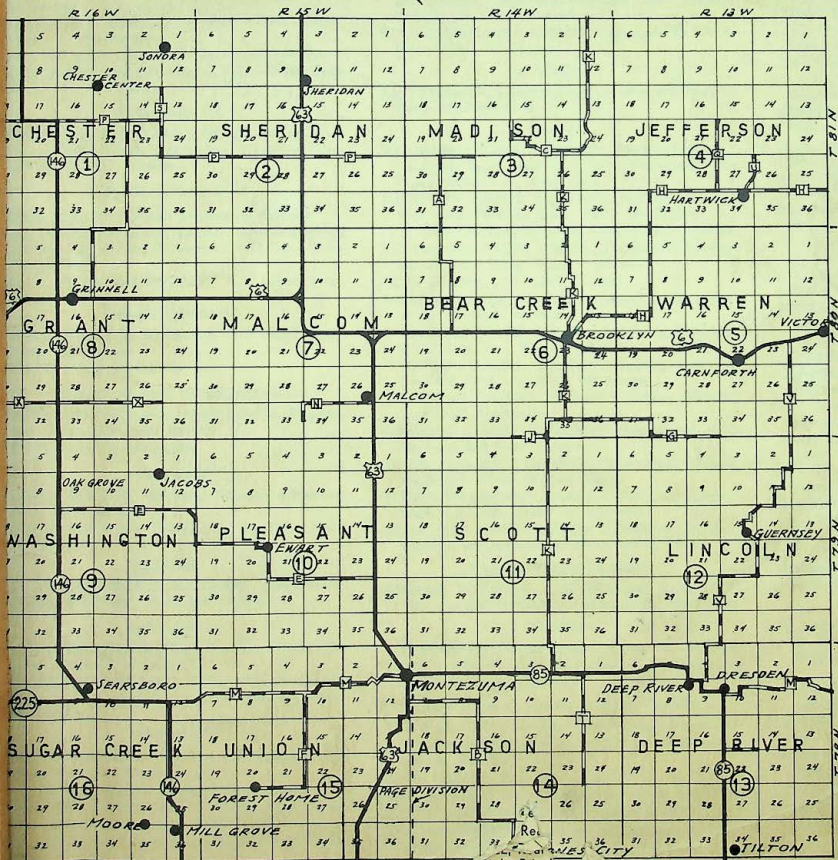
LEGEND FOR INDEX MAP

- FEDERAL ROADS
- PRIMARY ROADS
- TRUNK ROADS
- ① PAGE NUMBER OF PLATS

19 © 38

LEGEND FOR PLATS

- PRIMARY ROADS
- TRUNK ROADS
- LOCAL ROADS SURFACED
- SCHOOLS
- TOWNSHIP BOUNDARY
- CHURCH + CEMETERY
- GRIN.#1 = MAIL ROUTES



Right Price

- REED & REED, Brooklyn
 CLINTON RYAN, Brooklyn
 TALBOTT & TALBOTT, Brooklyn
 H. RELWELL, Grinnell
 C. M. MANLY, Grinnell
 RAYBURN & CRISMAN, Grinnell
 J. G. SHIFFLETT, Grinnell
 TOMASEK & VOGEL, Grinnell
 HARRY C. WEEKS, Grinnell
 W. H. BONHAM, 1st Nat. Bank Bldg.,
 Phone 134. Montezuma
 R. W. BOYD, Montezuma
 HAROLD E. BRYAN, Jackson Bldg.,
 Phone 14 1/2. Montezuma
 C. F. DICKSON, General Legal Practice,
 Montezuma
 GLENN L. EICHHORN, Montezuma
 E. W. McNEIL, 1st Nat. Bank Bldg., Phone
 134. Montezuma
 R. J. SMITH, Phone 90. Montezuma
 WALTER H. BONN, Victor
- AUTOS — SALES — SERVICE
- HAGEN BROS. GARAGE, Chevrolet
 Sales Service, Phone 22, Grinnell
 PITKA MOTOR CO., "Live Ford Dealers",
 Montezuma

- BANKS
- GIBSON SAVINGS BANK (Deep River
 Office), Deep River
 GRINNELL STATE BANK, Grinnell
 POWESHIEK COUNTY NAT. BANK,
 Grinnell
 MONTEZUMA STATE BANK, Montezuma
- CREAMERY
- BROOKLYN CO-OPERATIVE CREAM-
 ERY, Brooklyn

- CREDIT REPORTS
- GRINNELL CREDIT BUREAU, Adjustments
 and Loans, Grinnell
 POWESHIEK REPORTING COMPANY,
 Loans, Collections, Credit Reports,
 Phone 14 1/2. Montezuma

- ELEVATORS
- F. P. DUNTON—Sargent Feeds - Coal -
 Seeds - Popcorn - Small Fruit.
 Phone 126. Brooklyn
 GRINNELL GRAIN CO.—Feeds - Grain -
 Seeds - Coal, Phone 118. Grinnell
 TALBOTT & OLDS, Coal & Feed, Grinnell
 WILDER GRAIN CO.—Grain - Seeds, &
 Coal - Feed - Lumber and Hardware
 Guernsey and Hartwick.
 TAINTOURS CO-OPERATIVE CO., Repair
 Feed - Coal - Fence. Phone 14
 Taintor and Lynnville.

Continue

BOARD OF SUPERVISORS, POWESHIEK COUNTY, IOWA

RAY HUTCHINSON (Chairman), ARCHIE McCLUSKEY, GROVER F. EISEL

BUSINESS AND PROFESSIONAL DIRECTORY (Continued)

ELEVATORS—Continued

UL PETERSON — Grain - Feed and Seeds. Phone 6, Montezuma
 WBURG ELEVATOR CO. — Grain - Coal - Feeds. Phone 11. Newburg
 MIS ELEVATOR CO.—Grain-Coal-Feeds. New Sharon
 TERSON'S GRAIN CO.—Grain - Seeds - Feeds - Coal. Phone 34. New Sharon

FARM BUREAU

WVESHIEK COUNTY FARM BUREAU—A Progressive, Forward Looking Farm Organization. Education - Legislation - Service. Brooklyn

FUEL OIL & GASOLINE

ORRIS AND SON, Sinclair Distributors, Grinnell
 IEL PETROLEUM CORPORATION, Filtered-Screened and Metered. Burning Oil Service. F. D. Cox. Phone 728, Grinnell
 HILLIPS PETROLEUM COMPANY, E. I. Larsen, Prop., Grinnell

FUNERAL HOMES

WTH'S HOME FOR FUNERALS, 1103 Broad Street, Phone 255, Grinnell
 OS. C. ROSS, Montezuma

FURNITURE AND UNDERTAKING

WTH'S FURNITURE AND UNDERTAKING, Opposite Post Office, Phone 255, Grinnell
 EFFYS, Phone 19, Montezuma

HARDWARE

RIEVE & ECKLUND, Hardware, Plumbing & Heating. Phone 69, Brooklyn
 YCOX HARDWARE, Plumbing and Heating. Phone 31, Malcom

HATCHERY

OLLAND PRODUCE & HATCHERY, Baby Chicks, Produce and Feeds. Phone 148, Brooklyn

IMPLEMENTS

CORMICK DEERING STORE, Tractors - Trucks - Repairs. Phone 19, Grinnell
 ONTEZUMA IMPLEMENT COMPANY, McCormick Deering Farm Machinery and International Trucks. Montezuma

INSURANCE

MER M. GANNON, New York Life Representative. Phone 4 on 13. Brooklyn
 F. TAYLOR, General Insurance, Deep River
 QUITABLE LIFE INS. CO. OF IOWA, Farm Loans - Immediate Service. 4 1/2% Rate. Grinnell
 E. ALEXANDER, "Every Known Kind of Real Estate". Phone 37. Grinnell

INSURANCE—Continued

POWESHIEK COUNTY FARMERS MUTUAL INSURANCE ASSN. "Best Service at Least Cost." Organized Jan. 25, 1875. Grinnell
 BRYANS INSURANCE AGENCY, "Insure and Be Sure." Phone 14 1/2. Montezuma

LIVESTOCK

AL. SILVERMAN, Livestock Dealer, Farmer and Feeder. Phone 68, Deep River

LUMBER

FULLERTON LUMBER COMPANY, Building Materials, Hardware, Paint, Steel Posts, Wire Fence and Wall Paper. Phone 6-12, Barnes City
 FULLERTON LUMBER COMPANY, Building Material, Wall Paper, Paint and Coal. Phone 144, Brooklyn
 H. C. LIGHT AND SON, Lumber - Grain - Coal, Brooklyn
 RICHARDSON-PHELPS LUMBER COMPANY, Building Materials and Coal. Phone 9, Grinnell
 YORK LUMBER COMPANY, Grinnell
 STOKELY LUMBER COMPANY, Lumber, Building Materials and Coal, Hartwick
 FARMERS ELEVATOR COMPANY, Building Materials, Grain, Coal, Etc. Phone 73, Malcom
 FULLERTON LUMBER COMPANY, Building Materials, Coal and Paint. Phone 18, Montezuma
 WISCONSIN LUMBER COMPANY, "Building Material Specialists". Montezuma
 NEWBURG LUMBER COMPANY, Building Materials, Hardware and Paint, Newburg
 ECLIPSE LUMBER COMPANY, "Everything to Build Anything". Phone 58, New Sharon
 BOWEN GRAIN AND LUMBER COMPANY, Lumber, Grain and Coal. Phone 25, Searsboro
 DENNISTON AND PARTRIDGE COMPANY, Building Materials and Implements. Phone 60F12, Taintor

PLUMBING AND HEATING

RELIABLE PLUMBING AND HEATING COMPANY, "We specialize in plumbing and heating". Montezuma

PRODUCE

S. N. SCHULER, Cash for Produce. Phone 147. Brooklyn
 SWIFT & CO., Cash Buyers Poultry, Eggs and Cream, Swift's Hatchery. Grinnell

REAL ESTATE, LOANS AND INSURANCE

H. S. INGRAHAM, Real Estate and Insurance, Barnes City
 L. R. DOUGHERTY, Real Estate, Life and Property Insurance, Brooklyn
 J. W. FRIZZELL, Real Estate, Brooklyn
 M. L. GORDON, Real Estate and Insurance, Brooklyn
 COE H. MANATT, Real Estate Broker, Brooklyn
 F. G. WHITEHEAD, Real Estate and Insurance, Brooklyn
 J. FRANK AXTELL, Real Estate, Loans, "Farm and City Property at Right Price". Phone 87, Deep River

REAL ESTATE, ETC.—Continued

G. C. MOHR, Real Estate and Insurance. Phone 1009, Deep River.
 CLINDININ REALTY COMPANY, Grinnell
 L. G. CHRYSLER, Local Representative of Liquidation Corporation, 1415 Main Street, Grinnell
 JOE DEEDRICH, Real Estate and Insurance, Grinnell
 C. S. GEORGE, Real Estate, Insurance and Collections, Grinnell
 GRINNELL NATIONAL FARM LOAN ASSOCIATION, Grinnell
 O. H. MENDENHALL, Local Representative, Equitable Life Insurance Company of Iowa, Grinnell
 G. C. VOGT, President, Real Estate and Loans, 833 Fourth Avenue, Grinnell
 DAVID F. HAINES, Real Estate, Tax Collector and Notary Public, Grinnell
 C. H. HANSON, Real Estate, Farm Loans and Investment, Phone 751, Grinnell
 J. B. HEISEL, Real Estate, Insurance and Notary Public, 908 1/2 Main Street, Phone 38, Grinnell
 POWESHIEK REALTY AND INSURANCE COMPANY, Grinnell
 WILL STEENHOEK, Real Estate and Insurance. Phone 7 on 55, Grinnell
 CRAWFORD INSURANCE AND REAL ESTATE OFFICE, First National Bank Building. Phone 266, Montezuma
 J. J. FARMER, Real Estate and Insurance, Phone 232, Montezuma
 JOHN E. GILMORE, Real Estate, City Property and Loans, Phone 332, Montezuma
 E. D. RAYBURN AND J. B. GORSUCH, Real Estate and Loans, Washington and Montezuma
 ALBERT FISHER, Farms and City Property, New Sharon
 FRED LESTER, Phone 158, Oskaloosa

SALES PAVILION

GRINNELL LIVESTOCK EXCHANGE, Livestock Auctions every Friday, B. N. Whitaker, Owner

SEEDS

DE KALB AGRICULTURAL ASSOCIATION, Producers of DeKalb Quality Hybrid Seed Corn. Phone 55, Grinnell

SERVICE STATIONS

PHILLIPS "66" PRODUCTS, Bulk Service. Phone 3461 and 540. R. I. Larsen, Grinnell
 BOB BROWNELL'S SUPER SERVICE, on Highway U. S. No. 63. Phone 86, Montezuma
 LUNDEENS SUPER SERVICE, South on Highway U. S. 63. Phone 336, Montezuma

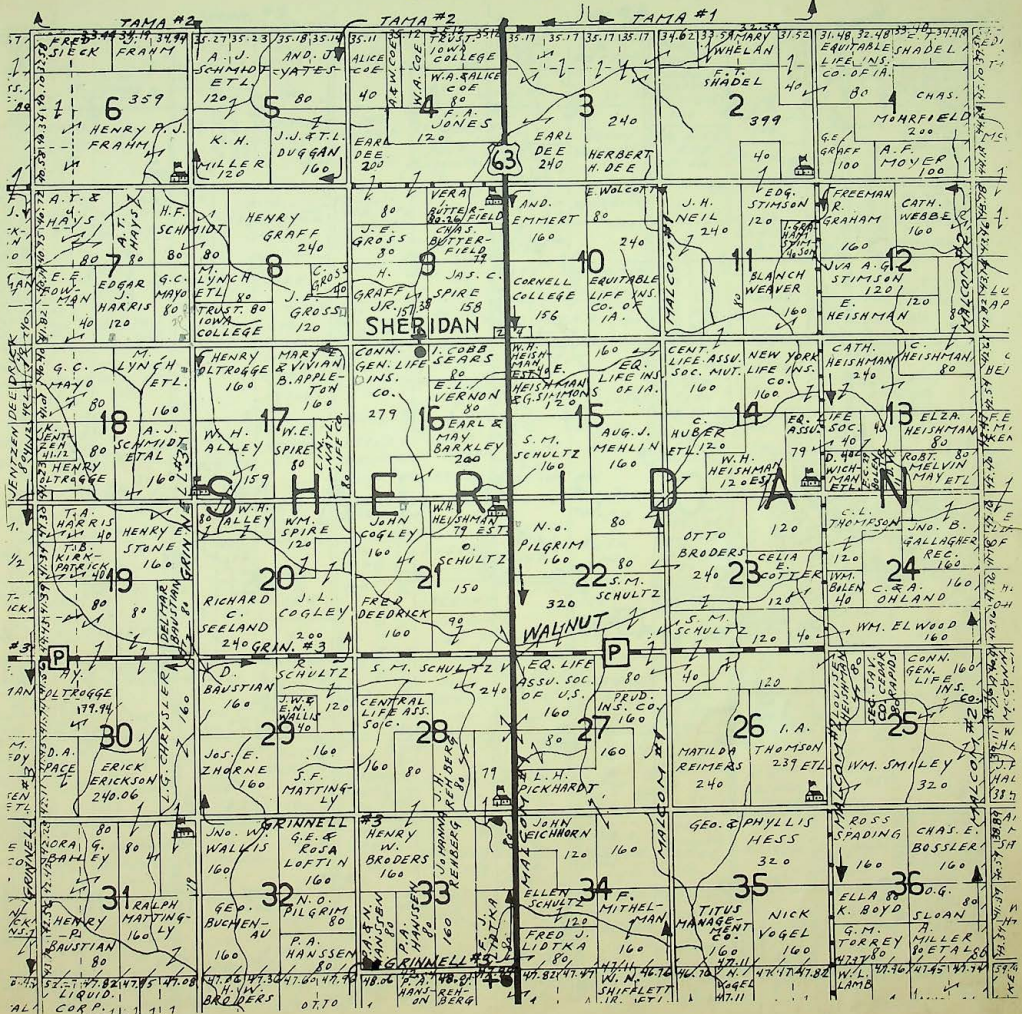
TIRES

BEN'S TIRE SHOP, Tires, Batteries, Washing and Repair. Grinnell

VETERINARY

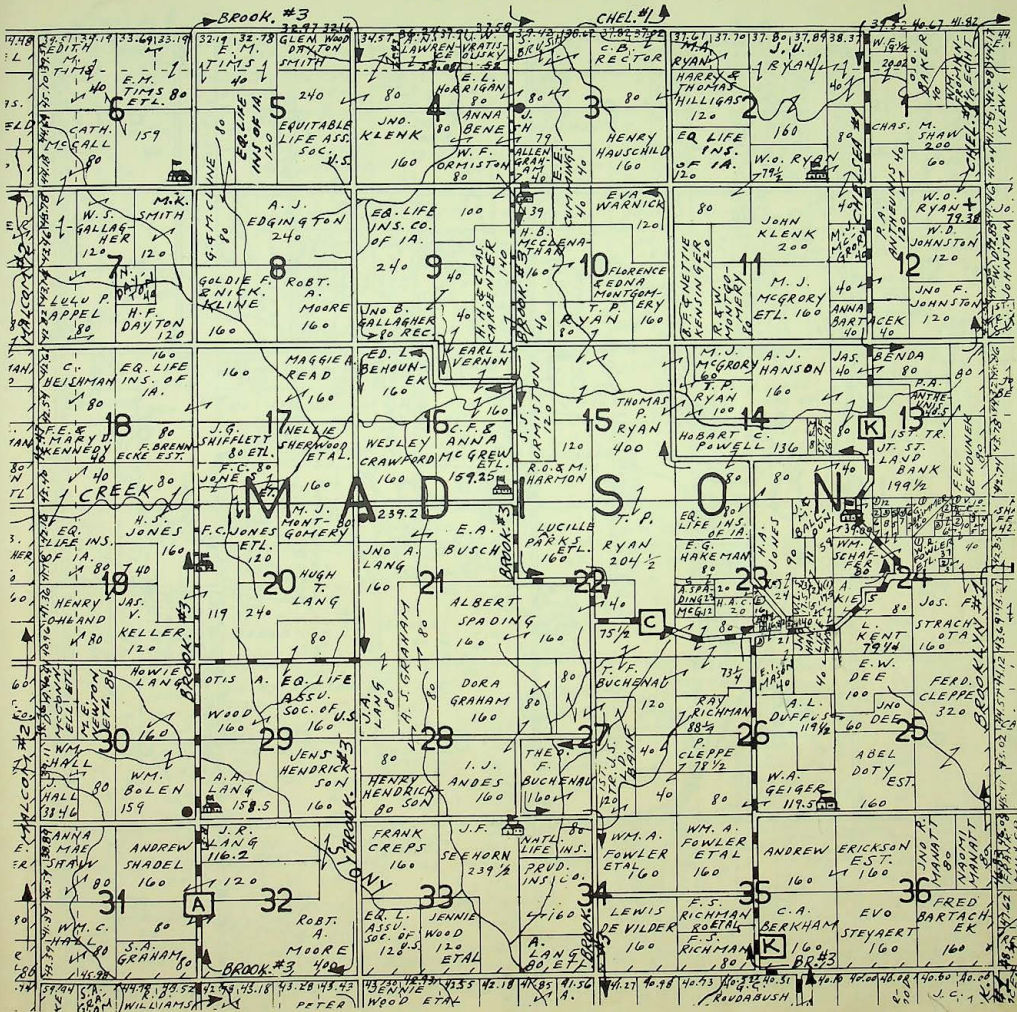
E. FARR, D.V.S., Montezuma

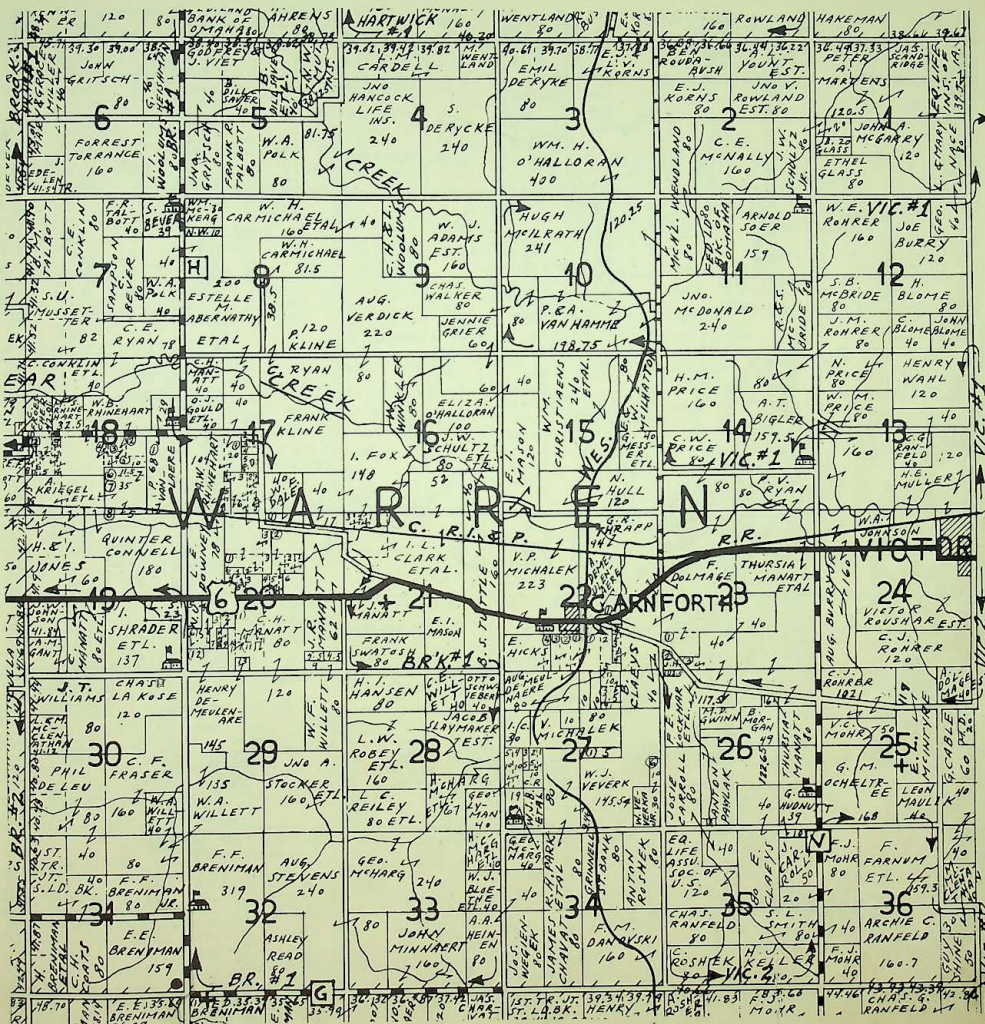
T 81 N R 15 W

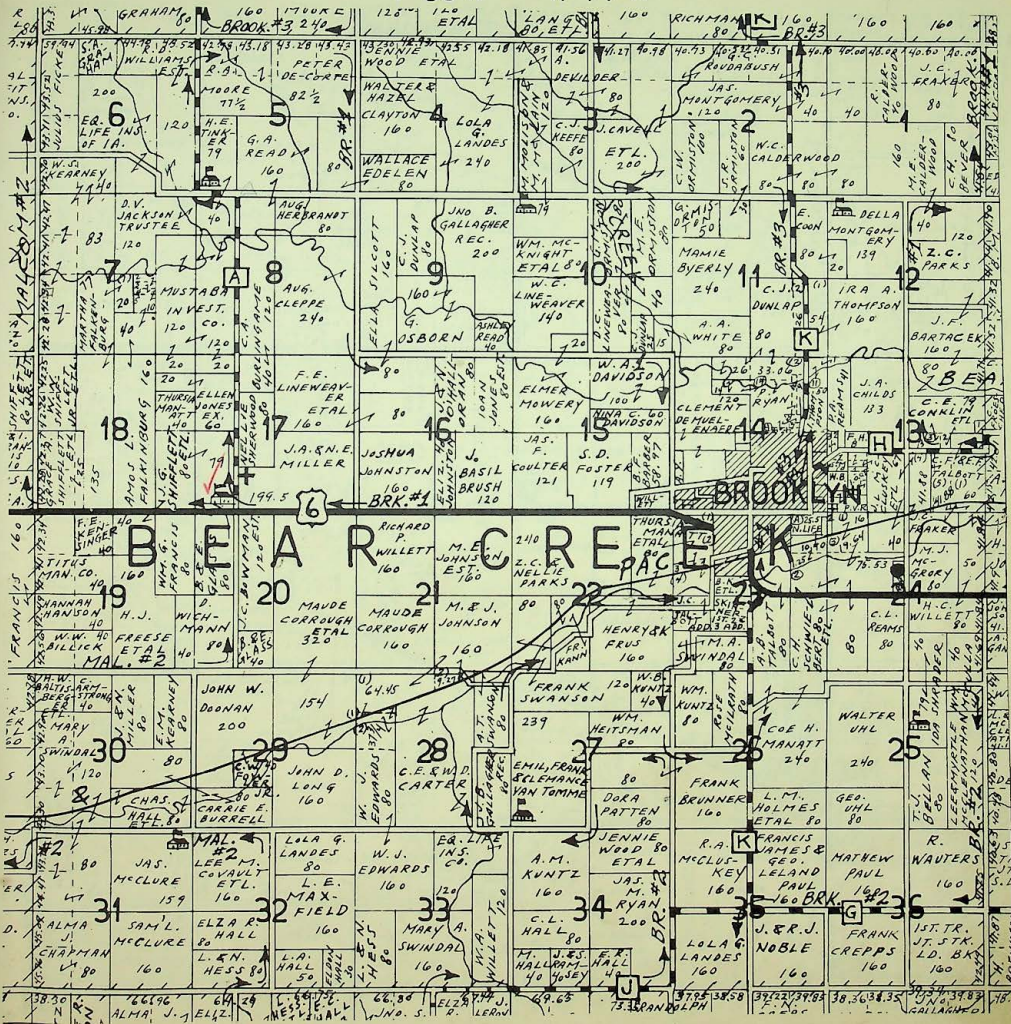


24
168

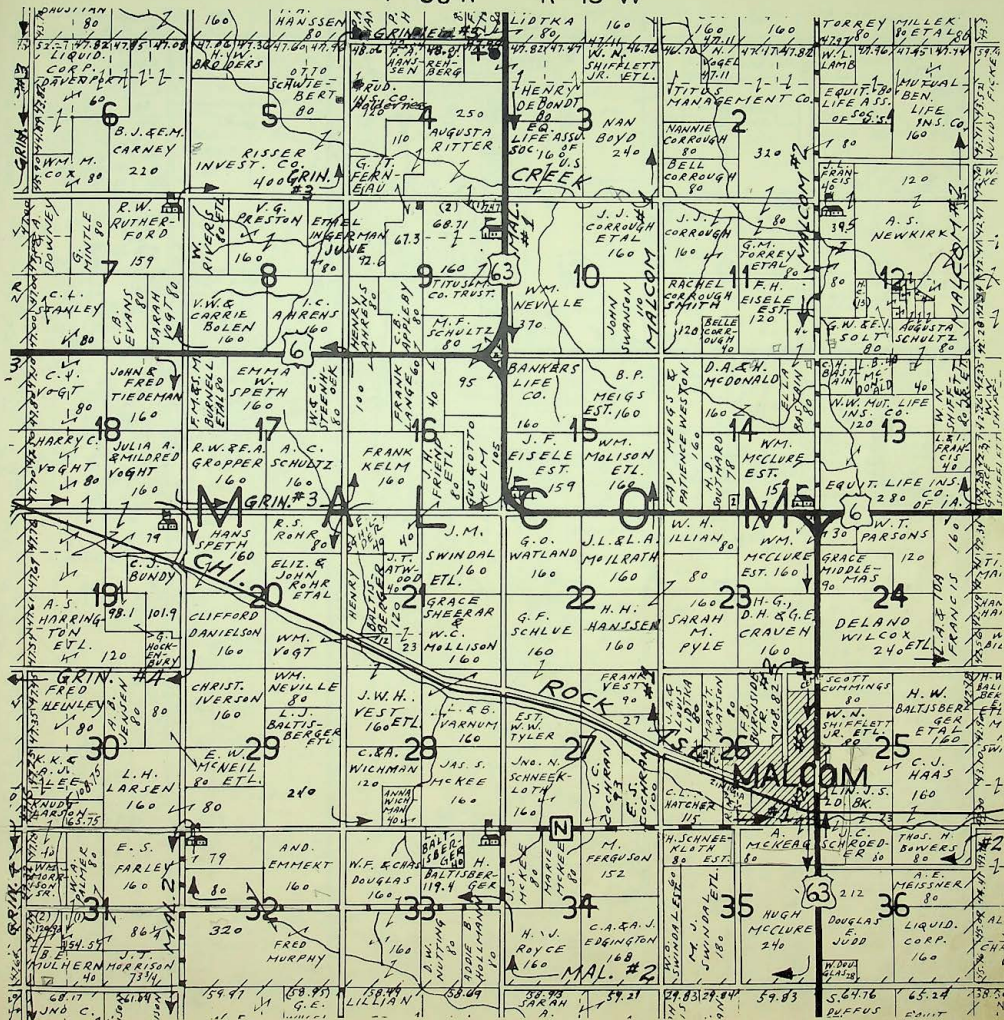
16
30

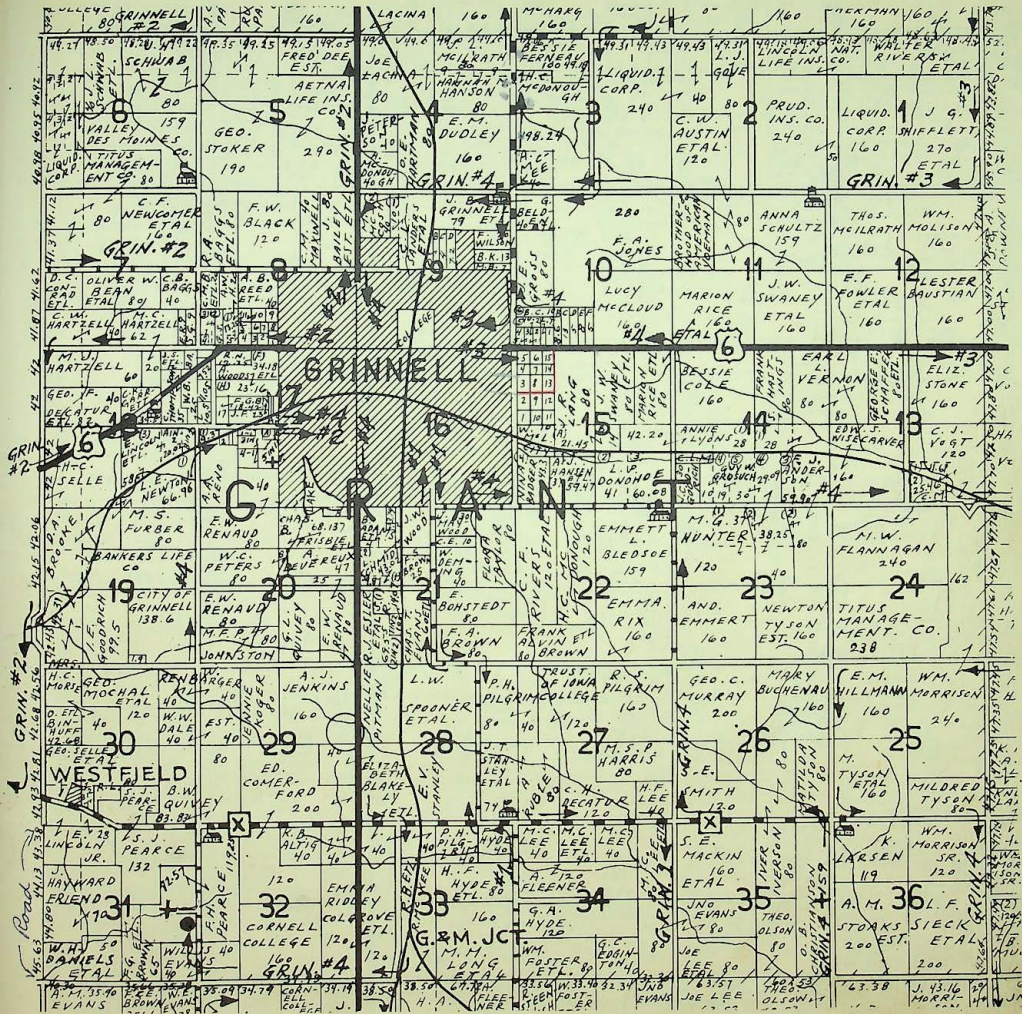






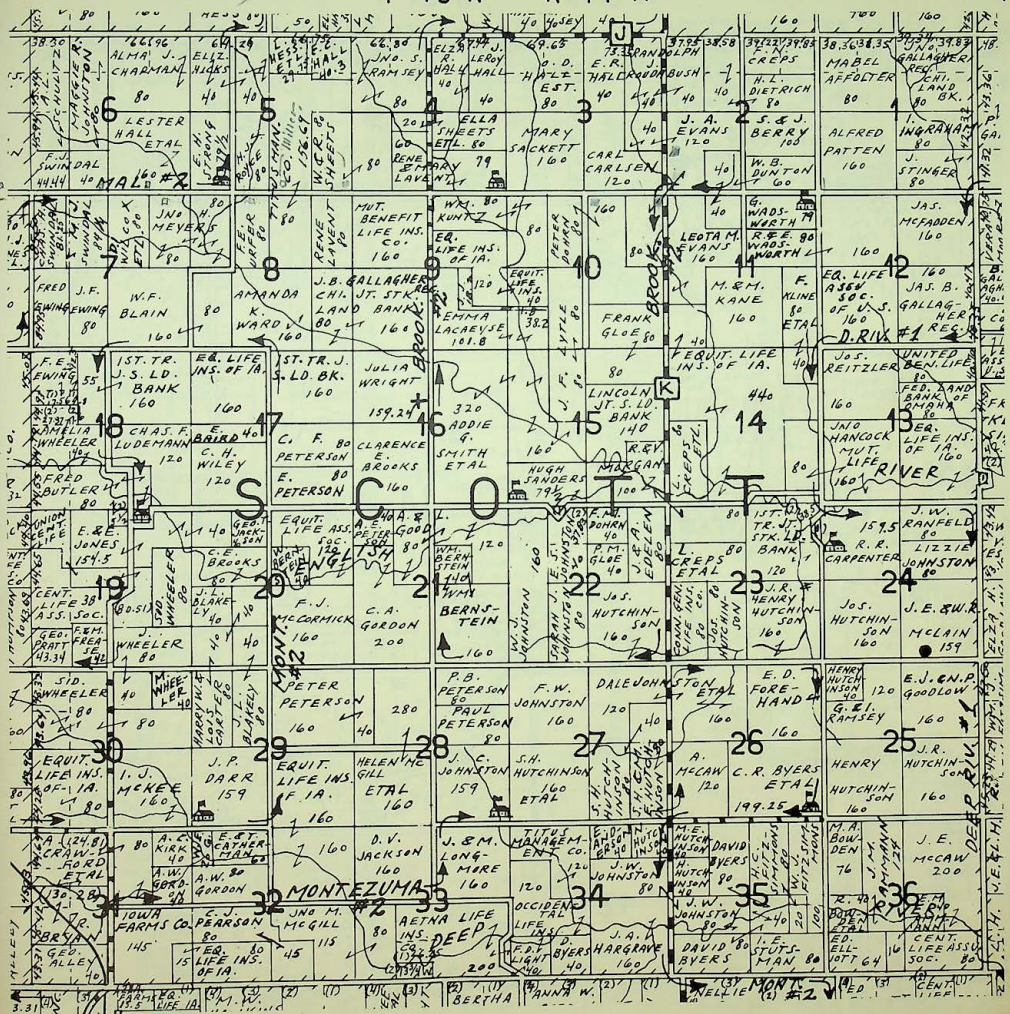
T 80 N R 15 W

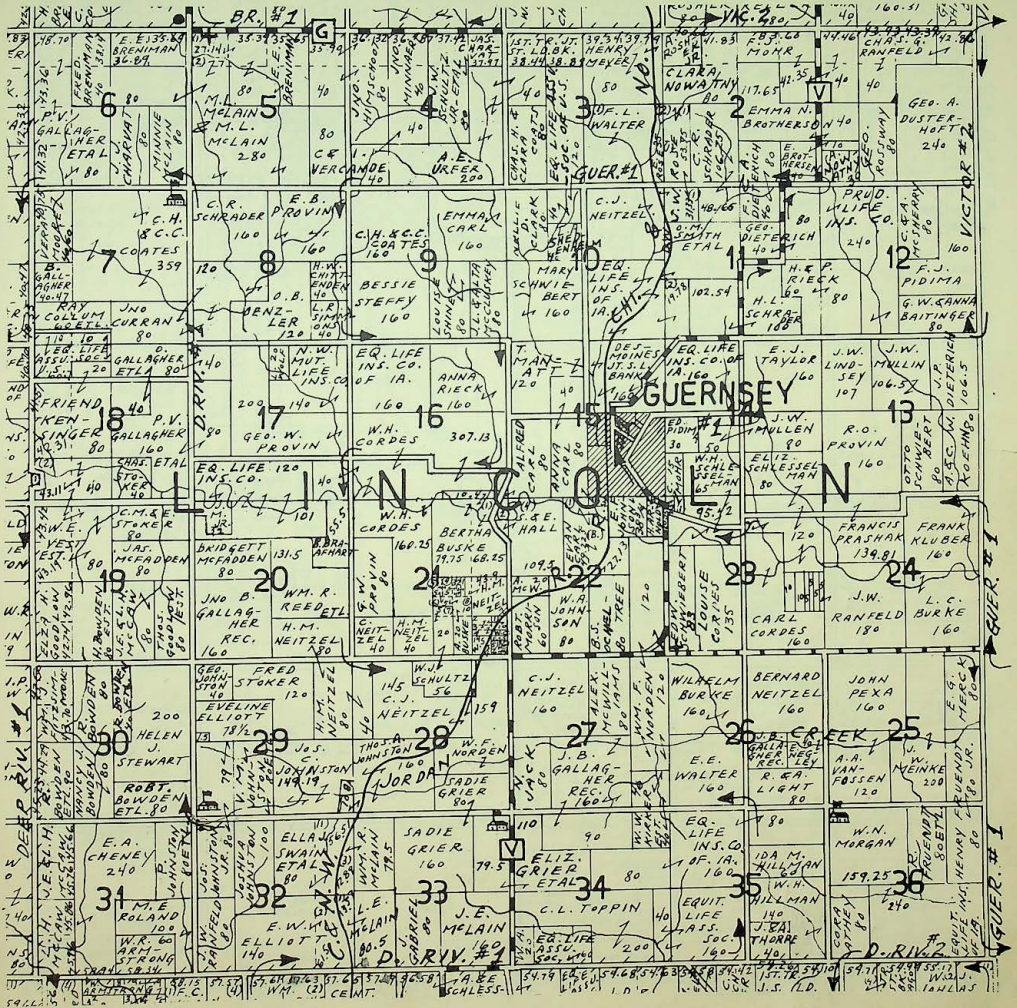




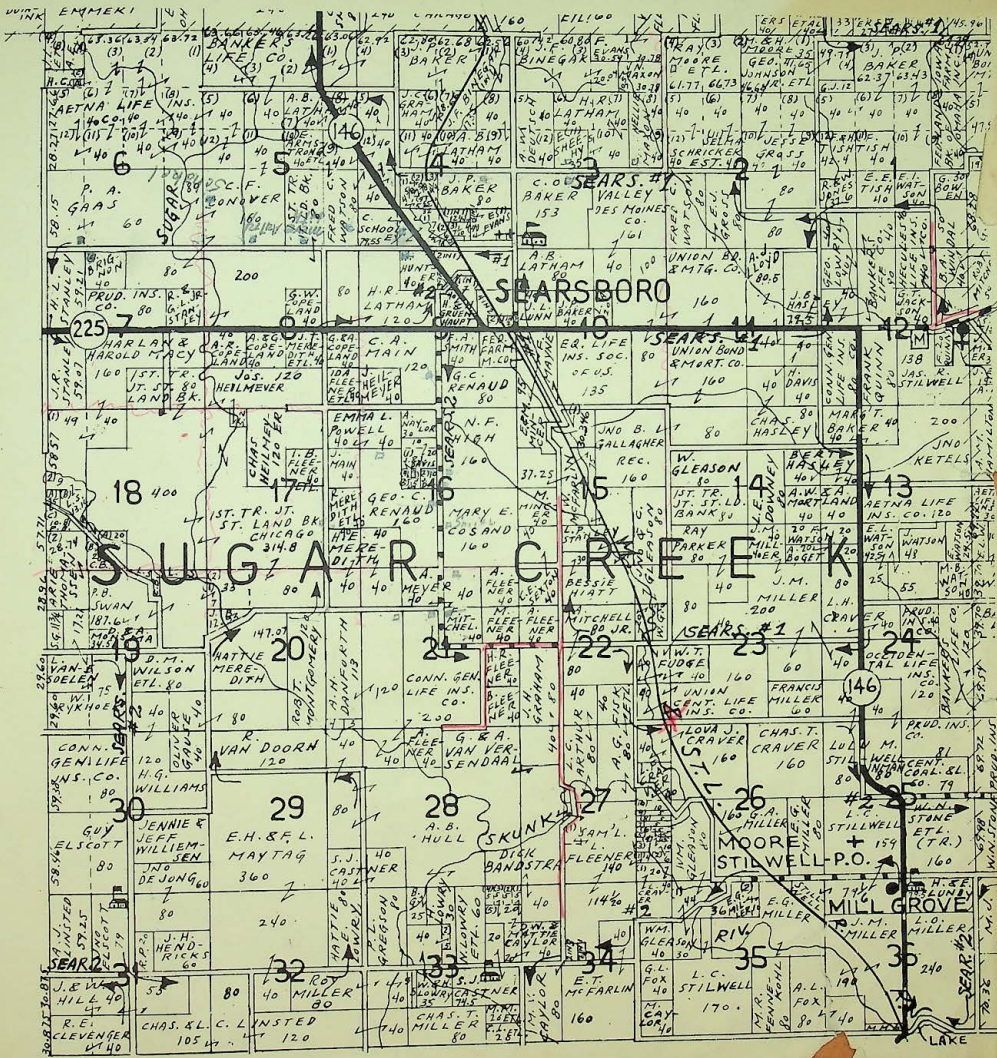
5280
2450
8490

T 79 N R 14 W











N. of Flood Head