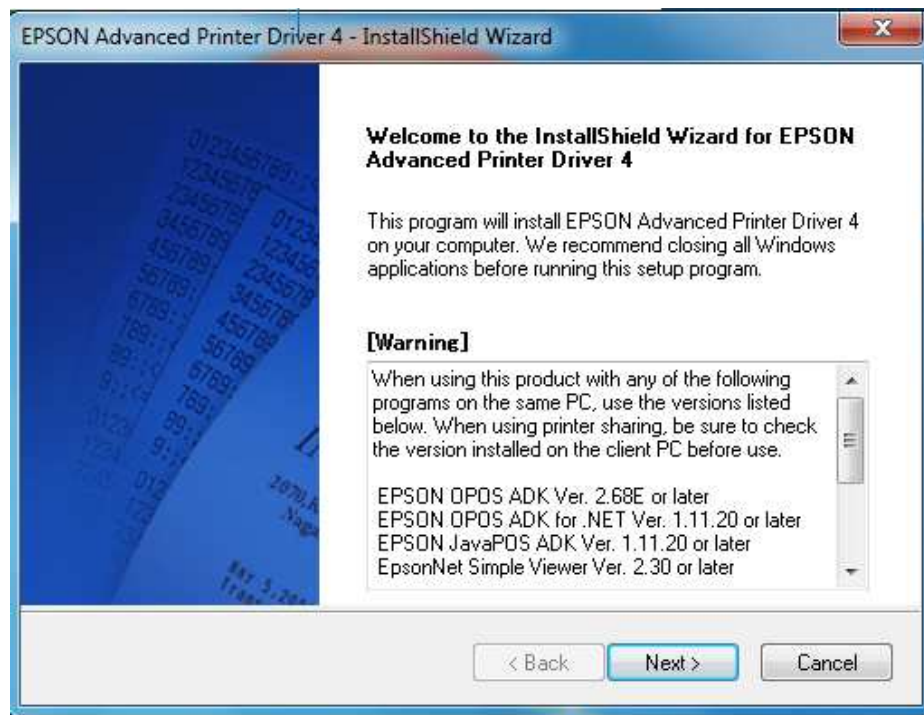


## **Installing a Epson TM-U675 Receptor \Validator USB Connection**

1. In our "Edmunds" or "Programs" folder there will be and MIS folder. Run APD\_450E.  
If it's not there please download from <https://help.edmundsgovtech.com/technical-support/>

Download driver 4.5 and save in \MIS folder

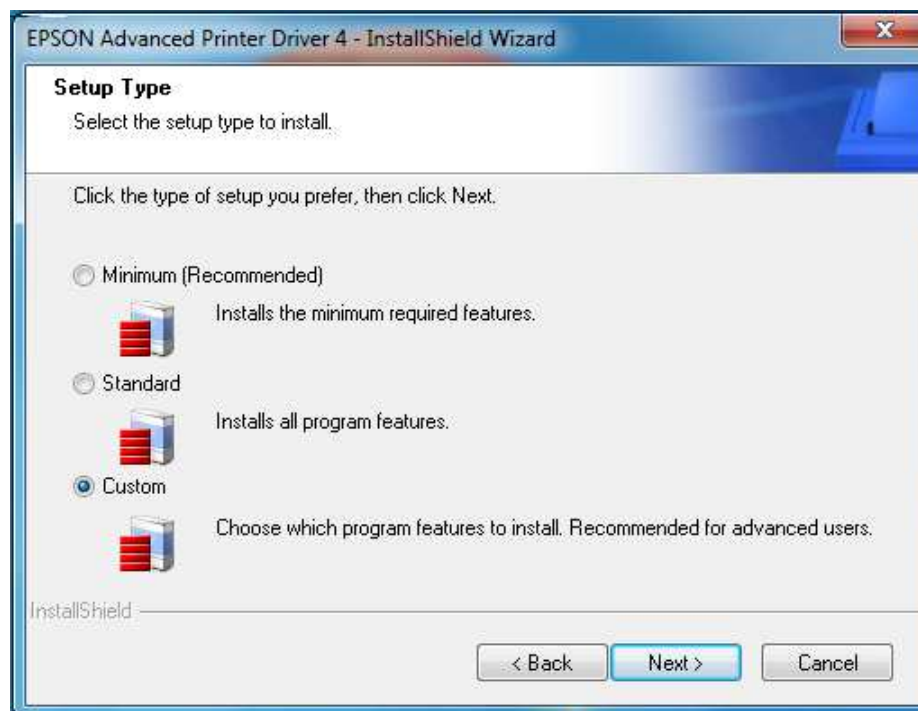
2. Once you have down loaded the driver double click on it, to run it. You will then see this screen, select next.



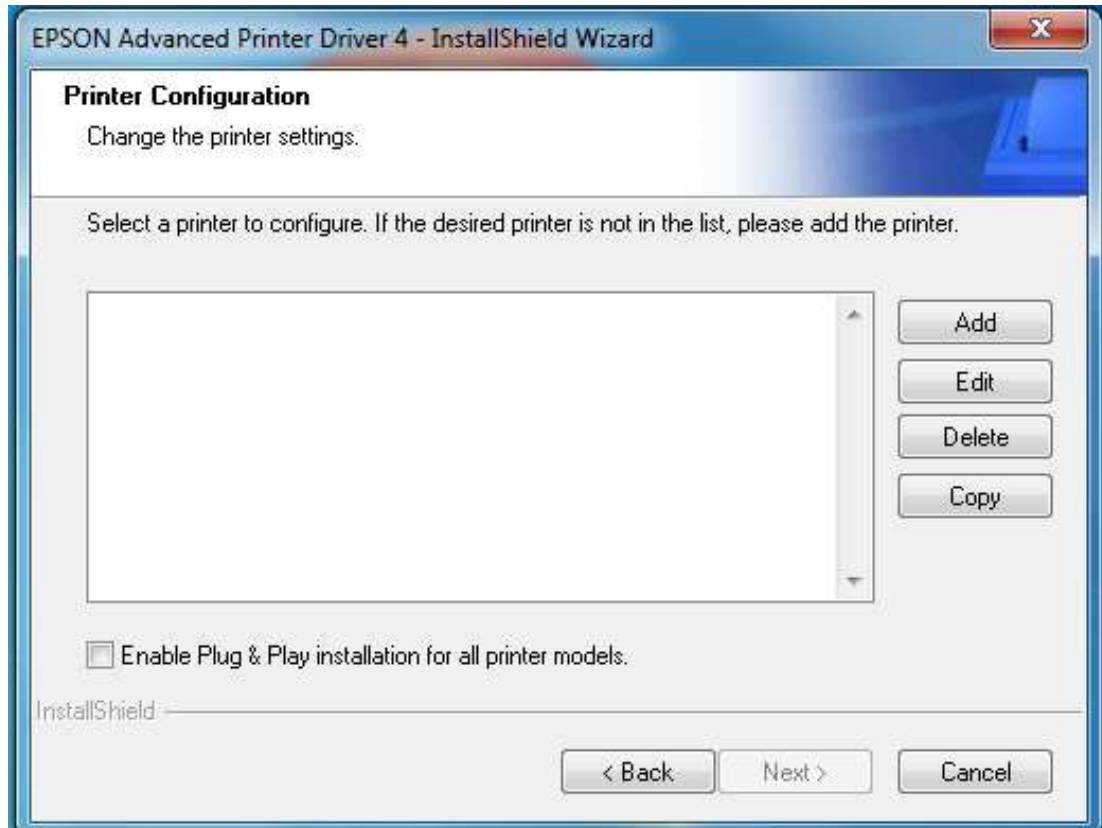
3. Accept agreement and click next.



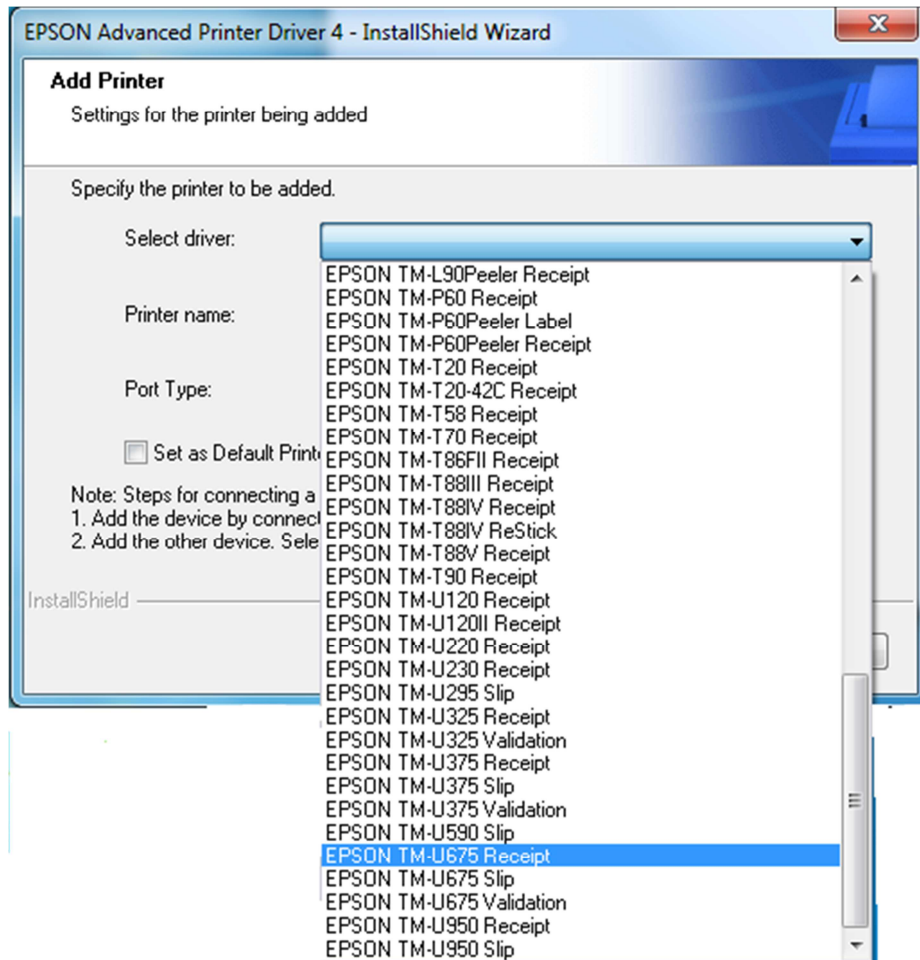
4. Select Custom and click next



5. From this screen select Add

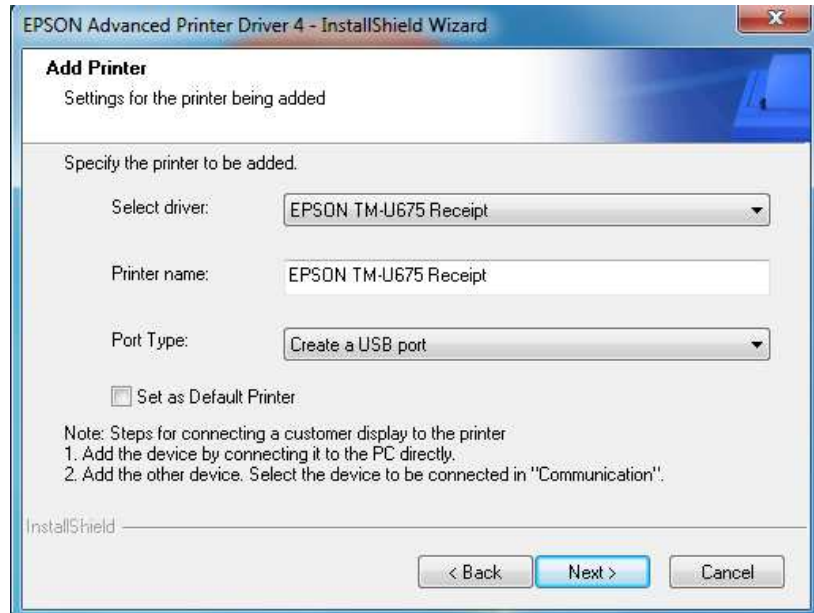


6. Click on the down arrow on the right, scroll down and select "Epson TM-U675 Receipt".

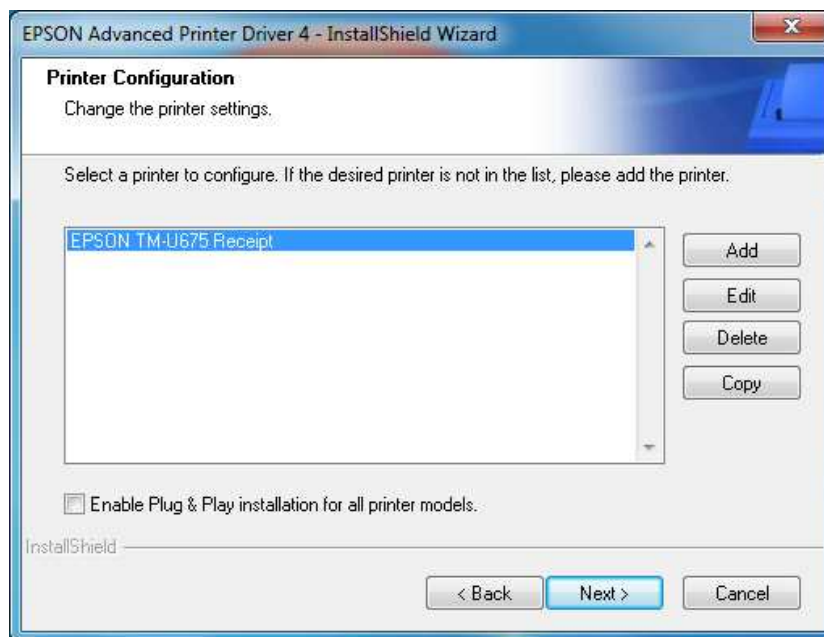


7. Select next

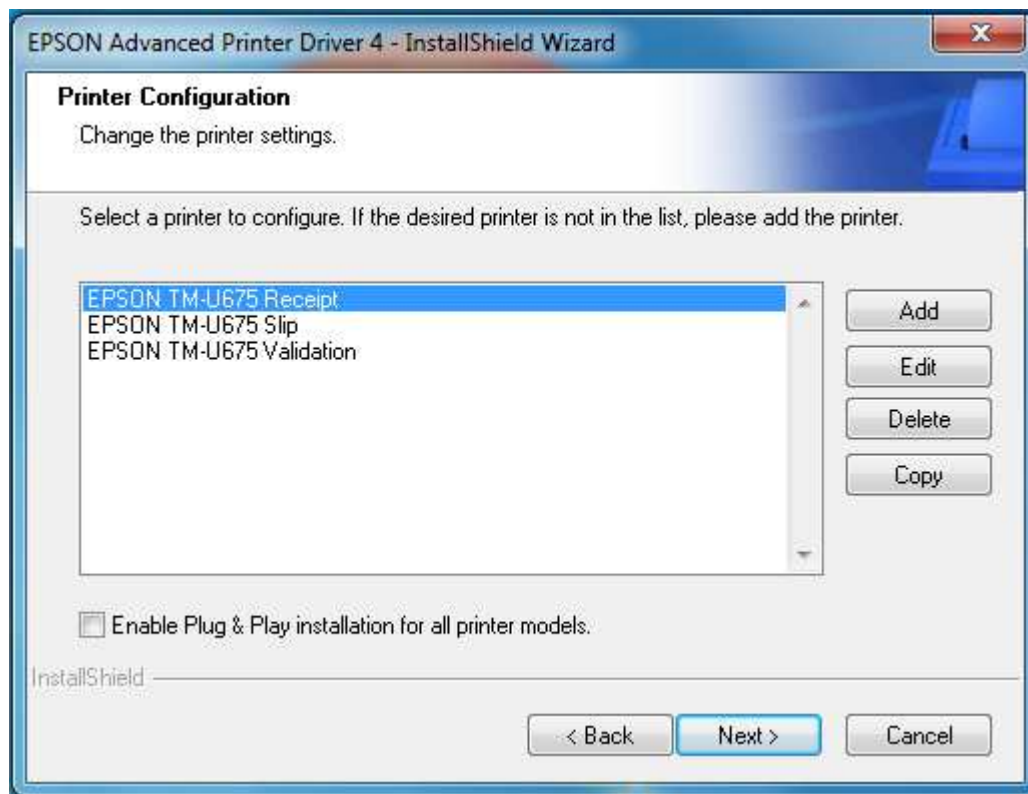
- After selecting the driver, in the same window select the down arrow to choose the **"Port Type"**.  
Select **"Create USB port"**.



- Select next and you will see the following screen.

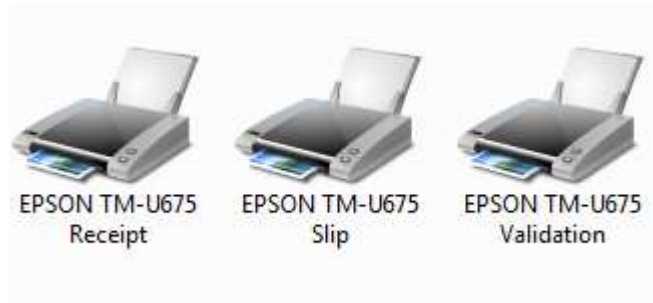


10. Repeat steps 5 through 9 adding drivers for :
  - a. **Epson TM-U675 Slip**
  - b. **Epson TM-U675 Validation**
    - i. NOTE: the "Port Type" should be set to **"Share with Epson TM-U675 Receipt"**
11. When finished you should see the following. Click next.



12. On the Select Features screen ... Click next.
13. On the Copying Files screen ... Click next.
14. Drivers are now being installed.  
After the drivers have been installed click "Finish."

15. Go to your printer folder. You should see the following printers



16. **Delete** the other two printers **Epson TM-U675 Slip** and **Epson TM-U675 Validation**.

17. Rename the Epson TM-U 675 Receipt to read just **"Receiptor"**



You're now ready to use your Epson TM-U675 with Edmunds software.