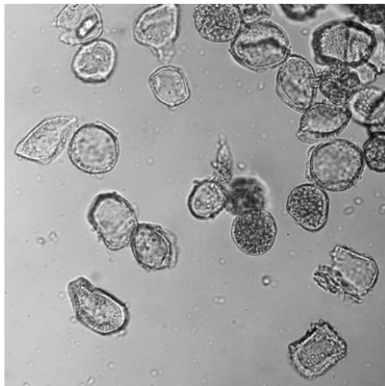


Jewelweed Rust

Puccinia recordita
Roberge ex Desmazières



DORSAL: Dorsey Woods, 5/31/2020,
J. Solem.
VENTRAL: Dorsey Woods, 5/31/2020,
J. Solem.
SPORES (21.4-24.7 x 24.7-27.9 µm):
Dorsey Woods, 5/31/2020, *R. Solem.*

Jewelweed Rust

Puccinia recordita
Pucciniaceae

J	F	M	A	M	J	J	A	S	O	N	D
---	---	---	---	++	++	---	---	---	---	---	---

ID: Cankers on Jewelweed (*Impatiens capensis*)..

Habitat: Jewelweed leaves. Alternative host grasses (including wheat).

Fruiting Body: "We quantified rust infection in populations of jewelweed; its effect on host mating system, potential biotic and abiotic correlates of infection; and spatial patterns within populations. Jewelweed (*Impatiens capensis*) is a woodland annual that can become infected with the heteroecious rust, *Puccinia recordita*, whose alternate hosts are often grasses [including wheat].... Infected plants may have fewer resources, so we predicted a decrease in CH flowering relative to that of uninfected plants. Infection occurred early in the growing season and disappeared by midsummer, although plants continued to grow and flower until the frost."

Spores: Yellow. Almost round, warty, hyaline.

Frequency: Uncommon.

Locations: HAMVL, OTHER.

Notes: Mycobank 145187.

Reference: International Journal of Plant Sciences 171(5):529-537 · June 2010

(https://www.researchgate.net/publication/249158743_Spatial_and_Temporal_Patterns_of_Rust_Infection_on_Jewelweed_Impatiens_capensis)