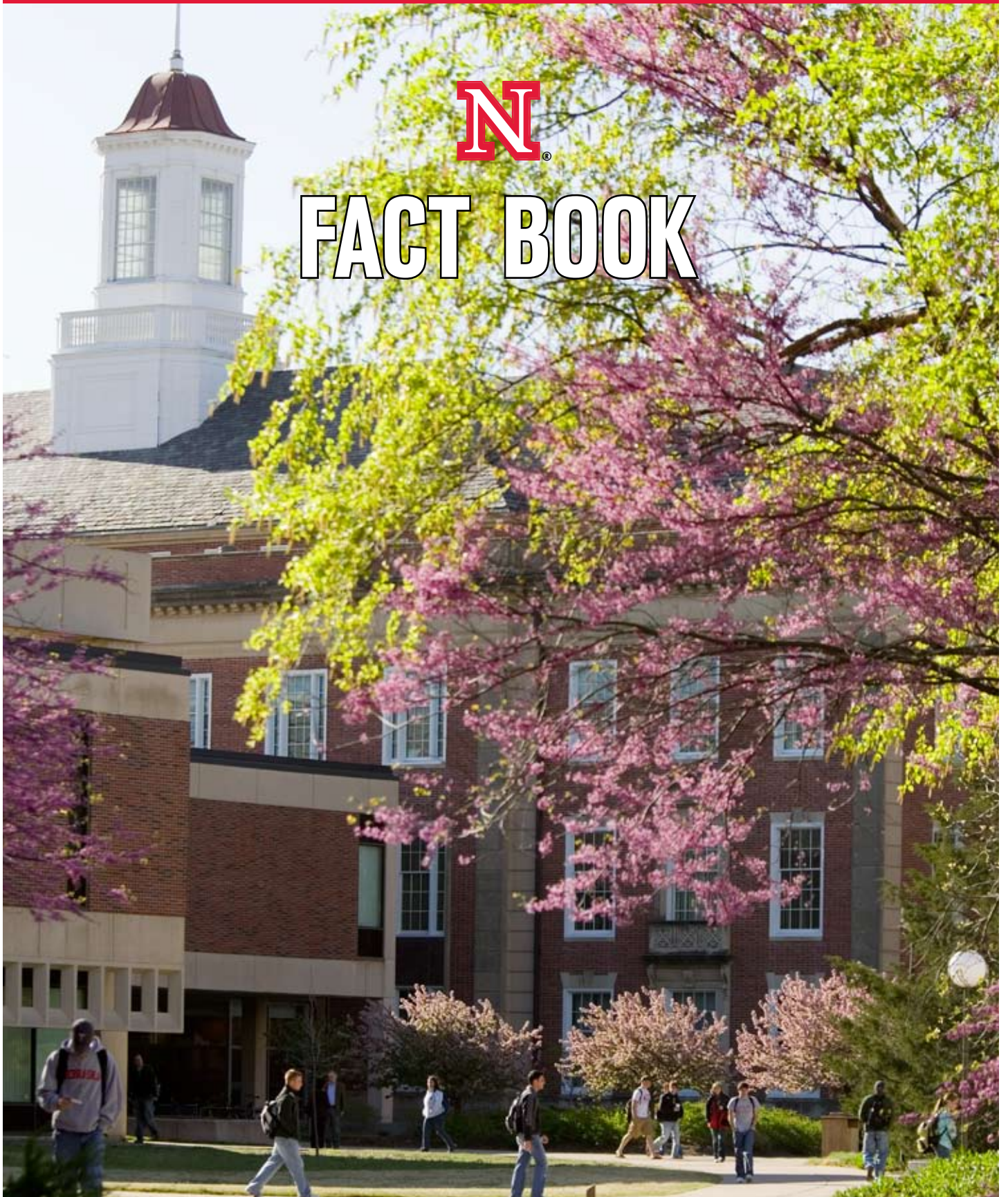


UNIVERSITY OF NEBRASKA-LINCOLN



FACT BOOK



2008-2009



Fact Book Table of Contents

General Information

- UNL Core Values 4
- Role and Mission Statement 5
- Institutional & Professional Accreditations 8
- UNL Organizational Chart..... 10

Student Credit Hours

- SCH by College and Student Level, Fall & Spring Semesters, 5 Year Trend 11
- SCH by College and Student Level, Fall Semester, 5 Year Trend..... 12
- SCH by College and Student Level, Spring Semester, 5 Year Trend 13
- Summer Sessions Student Credit Hours 14

Retention, Degrees and Majors

- Student Retention & Graduation Rate Analysis..... 15
- Total Degrees Conferred by UNL Fiscal Year, 10 Year Trend 16
- Degrees Conferred by College, Type & Number..... 17
- Types of Degrees Currently Offered at UNL..... 18

Academic Majors by College & Degree Level

- College of Agricultural Sciences & Natural Resources 19
- College of Architecture 20
- College of Arts & Sciences 21
- College of Business Administration..... 23
- College of Education & Human Sciences 24
- College of Engineering..... 27
- Hixson-Lied College of Fine & Performing Arts 28
- Graduate Studies 29
- College of Journalism & Mass Communications 29
- College of Law 29

Student Tuition & Fees

- Academic Year Tuition Rates 30
- Explanation of University Fees..... 31
- Student Cost Example..... 33
- Allocation of Student Fees per Student..... 34
- Undergraduate FT Tuition, Fees and Room & Board—5 Year Trend..... 35
- Student Financial Aid Awards by Type—3 Year Trend..... 36

Enrollment—Fall

- Enrollment, Fall Semesters Since 1932 37
- Enrollment by College 38
- Enrollment by College & Student Level..... 39
- First Time Freshmen Enrollment—5 Year Trend 40
- First Time Freshmen Composite ACT Scores—5 Year Trend 41
- Enrollment by College & Ethnicity..... 42
- Graduate & Professional Enrollment by College & Ethnicity 43
- Enrollment by Age 44
- Enrollment by College and Full/Part Time Status, 5 Year Trend 45
- Enrollment by Class Standing & Gender 46
- Enrollment by Level, Full or Part Time and Gender..... 46
- Resident & Non-Resident Student Profile by College, 10 Year Trend 47
- Enrollment by Resident & Non-Resident Status & Level Trend 48
- Enrollment by Housing Type—5 Year Trend..... 49
- Students by Country of Origin & Student Level..... 50
- Students by State of Origin & Student Level..... 52
- Students by Nebraska County of Origin 53



Fact Book Table of Contents continued

Enrollment—Spring

Enrollment by College54
 Enrollment by College & Student Level55
 Enrollment by College & Ethnicity56
 Graduate & Professional Enrollment by College of Specialization & Ethnicity57
 Enrollment by Resident & Non-Resident Status & Level Trend58

Enrollment—Summer

Enrollment by College for All Sessions59
 Enrollment for All Sessions Trend60
 Enrollment by Session Trend61

Faculty & Staff

General Regular Faculty by Tenure Status & College62
 General Regular Faculty Trends by Rank63
 General Regular Faculty by Rank & College64
 General Regular Faculty by Rank & Gender65
 General Regular Faculty by Age66
 Full-time Faculty by Tenure Status, Ethnicity & Gender67
 UNL Staffing, 10 Year Trend68
 UNL Staff Profile by Gender, Full / Part time Status69

Budget & Research

UNL Operating Budget70
 General Operating Budget Selected Numbers, 5 Year Trend71
 Grants & Contracts Number & Amount Awarded, 2 Year Trend72

Facilities

Room Use Summary73
 Land Inventory74
 Building Gross Square Footage75

Awards

University-Wide Awards76
 Faculty Awards77
 Academy of Distinguished Teachers79
 Distinguished Teaching Awards80
 Bessey and Cather Professorships82
 Staff Awards83

Glossary86



University of Nebraska-Lincoln Core Values:

- **L**earning that prepares students for lifetime success and leadership;
- **E**xcellence pursued without compromise;
- **A**chievement supported by a climate that celebrates each person's success;
- **D**iversity of ideas and people;
- **E**ngagement with academic, business, and civic communities throughout Nebraska and the world;
- **R**esearch and creative activity that inform teaching, foster discovery, and contribute to economic prosperity and our quality of life;
- **S**tewardship of the human, financial, and physical resources committed to our care.



Role and Mission Statement

The Role of the University of Nebraska-Lincoln

The University of Nebraska-Lincoln, chartered by the Legislature in 1869, is that part of the University of Nebraska system which serves as both the land-grant and the comprehensive public University for the State of Nebraska. Those responsible for its origins recognized the value of combining the breadth of a comprehensive University with the professional and outreach orientation of the land grant University, thus establishing a campus which has evolved to become the flagship campus of the University of Nebraska. UNL works cooperatively with the other three campuses and Central Administration to provide for its student body and all Nebraskans the widest array of disciplines, areas of expertise, and specialized facilities of any institution within the state.

Through its three primary missions of teaching, research, and service, UNL is the state's primary intellectual center providing leadership throughout the state through quality education and the generation of new knowledge. UNL's graduates and its faculty and staff are major contributors to the economic and cultural development of the state. UNL attracts a high percentage of the most academically talented Nebraskans, and the graduates of the University form a significant portion of the business, cultural, and professional resources of the State. The quality of primary, secondary, and other post-secondary educational programs in the state depends in part on the resources of UNL for curricular development, teacher training, professional advancement, and enrichment activities involving the University's faculty, museums, galleries, libraries, and other facilities. UNL provides for the people of the state unique opportunities to fulfill their highest ambitions and aspirations, thereby helping the state retain its most talented youth, attract talented young people from elsewhere, and address the educational needs of the non-traditional learner.

The University of Nebraska-Lincoln has been recognized by the Legislature as the primary research and doctoral degree granting institution in the state for fields outside the health professions. UNL is one of a select group of research universities which hold membership in the American Association of Universities (AAU). Through its service and outreach efforts the University extends its educational responsibilities directly to the people of Nebraska on a state-wide basis. Many of UNL's teaching, research and service activities have an international dimension in order to provide its students and the state a significant global perspective.

The Missions of the University of Nebraska-Lincoln

The role of the University of Nebraska-Lincoln as the primary intellectual and cultural resource for the State is fulfilled through the three missions of the University: teaching, research, and service. UNL pursues its missions through the Colleges of Architecture, Arts and Sciences, Business Administration, Engineering, Hixson-Lied College of Fine and Performing Arts, Education and Human Sciences, Journalism and Mass Communications, Law, the university-wide Graduate Studies, and the Institute of Agriculture and Natural Resources which includes the College of Agricultural Sciences and Natural Resources, the Agricultural Research Division, the Cooperative Extension Division, and the Conservation and Survey Division. Special units with distinct missions include the University Libraries, Extended Education and Outreach, International Affairs, the Lied Center for Performing Arts, the Bureau of Business Research, the Nebraska Educational Television System, the Sheldon Memorial Art Gallery, the University of Nebraska State Museum, the University Press, the Water Center, the Nebraska Forest Service, the



Nebraska Statewide Arboretum, and Intercollegiate Athletics.

To capitalize on the breadth of programs and the multidisciplinary resources available at UNL, a number of Centers exist to marshal faculty from a variety of disciplines to focus teaching and research on specific societal issues and to provide technical assistance for business and industry in order to enhance their ability to compete in world markets. Additionally, interdisciplinary programs promote integration of new perspectives and insights into the instructional research and service activities.

The University of Nebraska-Lincoln promotes respect for and understanding of cultural diversity in all aspects of society. It strives for a culturally diverse student body, faculty, and staff reflecting the multicultural nature of Nebraska and the nation. UNL brings international and multicultural dimensions to its programs through the involvement of its faculty in international activities, a student body that includes students from throughout the world, exchange agreements with other universities abroad involving both students and faculty, and the incorporation of international components in a variety of courses and curricula.

Teaching, research, and service take on a distinctive character at the University of Nebraska-Lincoln because of its status as a comprehensive land-grant university. These traits provide opportunities for the integration of multiple disciplines permitting students more complete and sophisticated programs of study. Its land-grant tradition ensures a commitment to the special character of the State and its people.

The faculty is responsible for the curricular content of the various programs, and pursues new knowledge and truths within a structure that assures academic freedom in its intellectual endeavors. The curricula are designed to foster critical thinking, the re-examination of accepted truths, a respect for different perspectives including an appreciation of the multiethnic character of the nation, and a curiosity that leads to life-long learning. Additionally, an environment exists whereby students can develop aesthetic values and human relationships including tolerance for differing viewpoints.

Teaching

The people of Nebraska created UNL to provide its citizens with the highest quality of post-secondary education. Therefore, a fundamental mission of the University of Nebraska-Lincoln is teaching. The distinctiveness of the teaching mission at the University of Nebraska-Lincoln lies in its range of undergraduate majors, the character and quality of the faculty, and the extracurricular environment. The University provides students with a wide choice of courses and career options which often expands the scope of their dreams and ambitions. The size and diversity of the University permits students to mature and to develop their own sense of self-confidence and individual responsibility. The course work is enriched by a faculty that is engaged in active research and creative activity and whose frame of reference is the national and international community of scholars.

Having created the first graduate college west of the Mississippi River, the University of Nebraska-Lincoln has historically recognized graduate education to be a central and unique component of its mission. Thus, UNL has primary responsibility in the State for graduate education, especially at the doctoral and professional levels. UNL is unique in possessing the scope of programs necessary for multidisciplinary instruction at the graduate level, a faculty involved in research necessary to support graduate education, and the libraries, laboratories, computer facilities, museums, galleries, and other ancillary resources required for graduate instruction.



Research

Basic and applied research and creative activity represent a major component of UNL's mission, a component that is recognized in Nebraska legislative statutes, and in its status as both a land-grant and an AAU research university. The quest for new knowledge is an essential part of a research university; it helps define and attract the type of faculty necessary to provide a university education; it distinguishes the quality of the undergraduate students' classroom experience; and it is the necessary component of graduate instruction.

As part of its research mission, UNL is dedicated to the pursuit of an active research agenda producing both direct and indirect benefits to the State. The special importance of agriculture, environment, and natural resources is addressed in its research priorities. In addition, UNL conducts a high level of research and creative activities that address in specific ways the issues and problems that confront Nebraska. Through their research and creative activities, faculty at UNL interact with colleagues around the world and are part of the network of knowledge and information that so influences our society. As a consequence, the University serves as the gateway through which Nebraska participates in and shares the gains from technological and cultural developments.

Service

The land-grant tradition creates for the University of Nebraska-Lincoln a special statewide responsibility to serve the needs of Nebraska and its citizens. In addition, many of its service aspects extend to regional, national, and international clientele. Special units such as Extended Education and Outreach, and the Cooperative Extension Division have specific responsibilities to bring the teaching and research resources of the University to a wider clientele. Through Cooperative Extension's partnership with federal, state, and county agencies, UNL has an outreach program in each county in the state. Moreover, all units of the University have a service and outreach mission. To help accomplish this mission, UNL delivers educational services through diverse ways including telecommunications methods and as a participant in the development of regional educational centers especially in those areas where it has statewide responsibilities. The University recognizes its obligation to extend the resources of the University beyond the campus and throughout the State. Serving the needs of Nebraska requires more than responding to the felt needs of the time. UNL must be visionary in its planning and must help the citizens of the state prepare for the future as well as deal with the present.

*Approved by the Board of Regents May 10, 1991
College names modified December 2005*



Institutional and Professional Accreditations

College/Program	Accrediting Agency	Last/Next
Institutional	North Central Association of Colleges and Schools, 30 North LaSalle Street, Suite 2400; Chicago IL 60602-2504; Phone: (312) 263-0456	2006-2007 / 2016-2017
Agricultural Sciences & Natural Resources		
All Programs (see exceptions)	Cooperative State Research, Education and Extension Service (CSREES). Exceptions: Agricultural Engineering, Biological Systems Engineering and NE Vet Diagnostic Lab System	
Agricultural Education (Joint program with the College of Education & Human Sciences) (B,M,D)	National Council Accreditation of Teacher Education (NCATE)	2002-03 / 2009-10
NE Vet Diagnostic Laboratory System	American Assoc of Veterinary Laboratory Diagnosticians	1999-00 / 2009-10
Professional Program in Veterinary Medicine	American Veterinary Medical Assoc Committee on Education (AAVMC COE)	2007-08 / 2010-11
The Professional Golf Management program	Professional Golfers' Association (PGA)	* / 2008-09
Architecture		
Architecture (FP)	National Architectural Accrediting Board, Inc (NAAB)	2002-03 / 2008-09
Community & Regional Planning (M)	Planning Accreditation Board of the American Planning Assoc (PAB)	2007-08 / 2011-12
Interior Design (B)	Council for Interior Design Accreditation (CIDA)	2006-07 / 2013-14
Landscape Architecture	Landscape Architecture Accreditation Board (LAAB)	* / 2012-13
Arts & Sciences		
Clinical Psychology (D)	American Psychological Association (APA)	2005-06 / 2012-13
Computer Science (B) (Lincoln Campus)	Computing Accreditation Commission (CAC) of ABET	* / 2008-09
Business Administration		
All programs (B,M,D)	Association to Advance Collegiate Schools of Business International (AACSB International)	2005-06 / 2010-11
Accountancy (B,M)	Association to Advance Collegiate Schools of Business International (AACSB International)	2005-06 / 2010-11
Education and Human Sciences		
All BS Programs (B) <i>Family & Consumer Sciences; Nutrition & Health Sciences; Textiles, Clothing & Design</i>	American Assoc of Family and Consumer Sciences (AAFCS)	1995-96 / 2008-09
All Professional & Educational Programs (B,M,S,D) <i>Ed Administration; Ed Psychology; Spec Ed & Comm Disorders; Teaching, Learning & Teacher Ed</i>	National Council Accreditation of Teacher Education (NCATE)	2002-03 / 2009-10
Counseling Psychology (M,D)	American Psychological Association (APA)	2006-07 / 2012-13
Dietetics Internship for NSD (M,D)	American Dietetic Association (ADA)	1998-99 / 2008-09
Early Childhood Education (B)	National Academy of Early Childhood Program through the National Assoc for Education of Young Children	2003-04 / 2007-08
Marriage & Family Therapy (M)	Commission on Accreditation for Marriage & Family Therapy Education (COAMFTE)	2003-04 / 2009-10
Nebraska Internship Consortium in Professional Psychology (D)	American Psychological Association (APA)	2001-02 / 2008-09
School Psychology (D)	American Psychological Association (APA)	2003-04 / 2010-11
School Psychology (D,S)	National Association of School Psychologists (NASP) with NCATE	2004-05 / 2009-10
Special Education-Hearing Impaired Program (M)	Council for Education of the Deaf (CED)	2006-07 / 2011-12
Speech-Language Pathology & Audiology (M)	Council on Academic Accreditation in Audiology and Speech-Language Pathology of ASHA	2001-02 / 2008-09
Teacher Education Programs (B,M,S,D)	Nebraska Department of Education (NDE)	2002-03 / 2009-10

(A) Associate, (B), Baccalaureate, (M) Masters, (FP) First Professional (D) Doctorate, (S) beyond masters, but less than doctorate

* Date of next general review



Institutional and Professional Accreditations continued		
College/Program	Accrediting Agency	Last/Next
Engineering		
Agricultural Engineering (M)	Accreditation Board for Engineering & Technology (ABET)	2006 / 2011-12
Architectural Engineering (B)	Accreditation Board for Engineering & Technology (ABET)	2006 / 2011-12
Biological Systems Engineering (B)	Accreditation Board for Engineering & Technology (ABET)	2006 / 2011-12
Chemical Engineering (B)	Accreditation Board for Engineering & Technology (ABET)	2006 / 2011-12
Civil Engineering (B)	Accreditation Board for Engineering & Technology (ABET)	2006 / 2011-12
Computer Engineering (B) (Lincoln Campus)	Accreditation Board for Engineering & Technology (ABET)	2006 / 2011-12
Computer Engineering (B) (Omaha Campus)	Accreditation Board for Engineering & Technology (ABET)	2006 / 2011-12
Construction Management (B)	American Council for Construction Education (ACCE)	2000-01 / 2006-07
Construction Engineering Technology	Technology Accreditation Commission (TAC) with the Accreditation Board for Engineering & Technology (ABET)	* / 2009-10
Electrical Engineering (B)	Engineering Accreditation Commission of Accreditation Board for Engineering & Technology (ABET)	2006 / 2011-12
Electronics Engineering (B)	Accreditation Board for Engineering & Technology (ABET)	2006 / 2011-12
Industrial Engineering (B)	Engineering Accreditation Commission of Accreditation Board for Engineering & Technology (ABET)	2006 / 2011-12
Mechanical Engineering (B)	Engineering Accreditation Commission of Accreditation Board for Engineering & Technology (ABET)	2006 / 2011-12
Hixson-Lied College of Fine and Performing Arts		
Art & Art History (B,M)	National Assoc of Schools of Art and Design (NASAD)	2002-03 / 2012-13
Music (B,M,D)	National Association of Schools of Music (NASM)	1998-99 / 2008-09
Music Education (Joint program with the College of Education & Human Sciences) (B,M,D)	National Council Accreditation of Teacher Education (NCATE)	2002-03 / 2009-10
Theatre (B,M)	National Association of Schools of Theatre (NAST)	1996-97 / 2007-08
Journalism and Mass Communications		
All Programs (B,M)	Accrediting Council on Education in Journalism & Mass Communication (ACEJMC)	2003-04 / 2009-10
Law		
All programs (FP)	American Bar Assoc (ABA)	2003-04 / 2010-11
Museum		
University of Nebraska State Museum	American Association of Museums	2007-08 / 2017-18

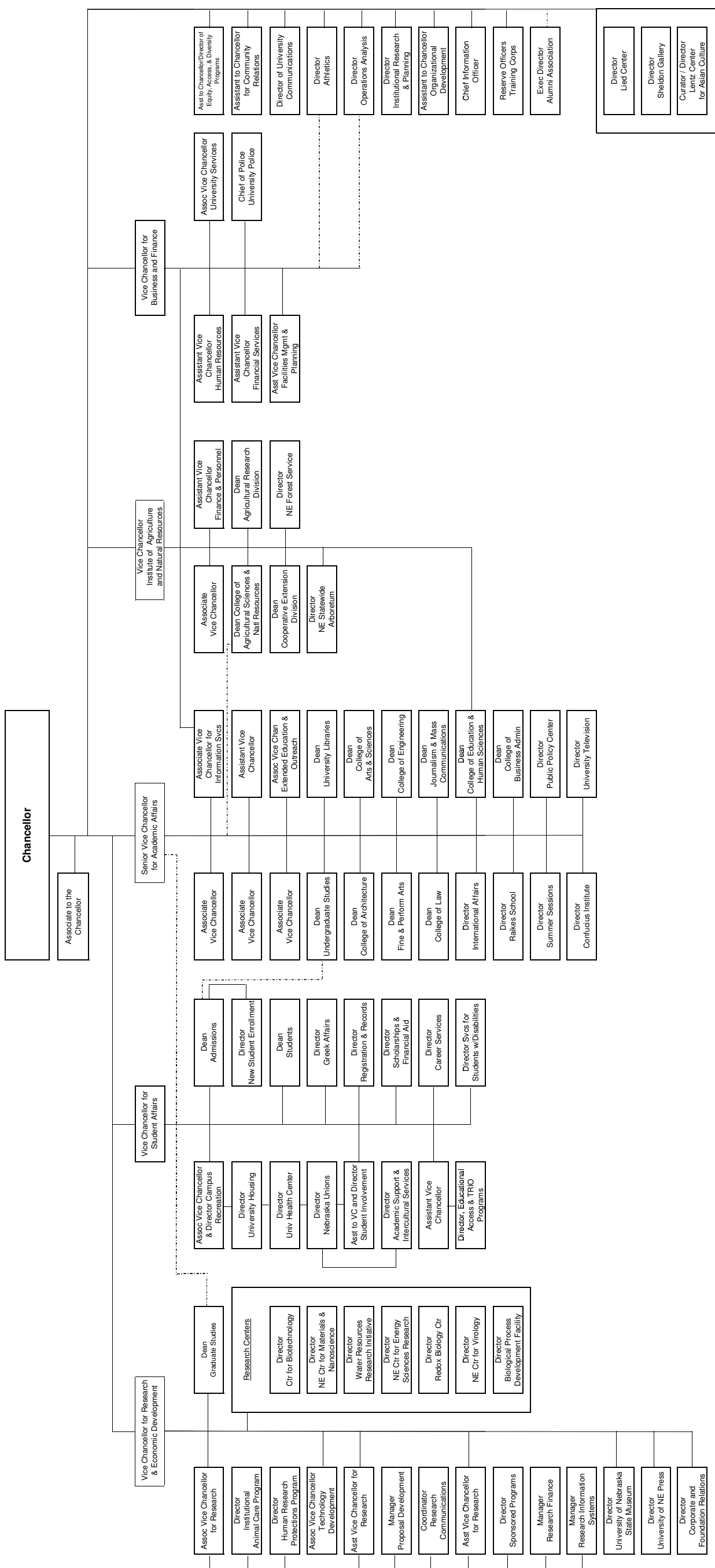
(A) Associate, (B), Baccalaureate, (M) Masters, (FP) First Professional (D) Doctorate, (S) beyond masters, but less than doctorate

* Date of next general review

Source: Office of the Senior Vice Chancellor for Academic Affairs

Last Updated: May 1, 2008

University of Nebraska - Lincoln Administrative Organization Chart
May 2009





Student Credit Hours by College and Student Level						
Fall and Spring - 5 Year Trend						
College		2004-05	2005-06	2006-07	2007-08	2008-09
Agricultural Sciences & Natural Resources	Undergraduate	29,123	29,642	31,153	34,741	38,721
	Graduate	7,278	7,736	7,948	8,306	8,344
	Professional	0	0	0	953	1,895
	Total	36,401	37,378	39,101	44,000	48,960
Architecture	Undergraduate	8,416	8,434	8,773	9,492	9,825
	Graduate	822	818	748	558	761
	Professional	1,471	1,488	1,340	1,342	1,376
	Total	10,709	10,740	10,861	11,392	11,962
Arts & Sciences	Undergraduate	224,180	226,316	233,973	244,572	247,730
	Graduate	15,457	16,675	16,947	16,599	16,782
	Total	239,637	242,991	250,920	261,171	264,512
Business Administration	Undergraduate	49,235	49,440	48,793	50,246	52,975
	Graduate	5,769	6,361	6,600	6,598	6,552
	Total	55,004	55,801	55,393	56,844	59,527
Education & Human Sciences	Undergraduate	49,563	48,162	48,695	49,738	52,457
	Graduate	14,396	14,053	14,609	15,190	14,743
	Total	63,959	62,215	63,304	64,928	67,200
Engineering	Undergraduate	30,274	30,107	30,128	31,073	31,355
	Graduate	5,247	5,464	5,636	5,973	6,440
	Total	35,521	35,571	35,764	37,046	37,795
Hixson - Lied College of Fine & Performing Arts	Undergraduate	32,218	32,628	32,366	33,246	34,364
	Graduate	2,578	2,635	2,513	2,963	2,609
	Total	34,796	35,263	34,879	36,209	36,973
Journalism and Mass Communications	Undergraduate	12,695	12,468	13,968	13,233	13,230
	Graduate	514	616	640	735	607
	Total	13,209	13,084	14,608	13,968	13,837
Law	Prof (Total)	12,289	11,468	11,750	11,806	12,147
Reserve Officers Training Corps	UG (Total)	652	668	715	659	715
Other Departments ¹	Undergraduate	7,544	7,252	7,050	8,100	8,875
	Graduate	216	290	216	175	97
	Professional	13	0	0	0	15
	Total	7,773	7,542	7,266	8,275	8,987
Total U of Nebr-Lincoln	Undergraduate	443,900	445,117	455,614	475,100	490,247
	Graduate	52,277	54,648	55,857	57,097	56,935
	Professional	13,773	12,956	13,090	14,101	15,433
	Total	509,950	512,721	524,561	546,298	562,615

¹ Includes Overseas Courses, Library, Foundations, Honors, Graduate College, JD Edwards Program and Raikes School of Computer Science and Management.

NOTE: Student Credit Hours (SCH) are as of the Census Date (sixth day of the semester).

Last Updated: February 19, 2009



Student Credit Hours by College and Student Level						
Fall - 5 Year Trend						
College		2004	2005	2006	2007	2008
Agricultural Sciences & Natural Resources	Undergraduate	15,272	16,093	16,180	18,701	20,667
	Graduate	3,755	3,877	3,978	4,076	4,219
	Professional				453	952
	Total	19,027	19,970	20,158	23,230	25,838
Architecture	Undergraduate	4,355	4,394	4,607	4,977	5,237
	Graduate	393	404	409	260	373
	Professional	808	785	702	703	694
	Total	5,556	5,583	5,718	5,940	6,304
Arts & Sciences	Undergraduate	118,705	118,533	123,086	128,800	130,586
	Graduate	7,821	8,554	8,843	8,694	8,771
	Total	126,526	127,087	131,929	137,494	139,357
Business Administration	Undergraduate	25,506	26,047	25,160	25,380	27,005
	Graduate	2,925	2,978	3,005	3,388	3,779
	Total	28,431	29,025	28,165	28,768	30,784
Education & Human Sciences	Undergraduate	24,663	24,366	24,155	24,599	25,979
	Graduate	7,322	7,032	7,164	7,530	7,465
	Total	31,985	31,398	31,319	32,129	33,444
Engineering	Undergraduate	15,500	15,752	15,496	16,077	16,006
	Graduate	2,607	2,798	2,848	2,917	3,104
	Total	18,107	18,550	18,344	18,994	19,110
Hixson - Lied College of Fine & Performing Arts	Undergraduate	16,777	16,950	16,782	17,774	18,006
	Graduate	1,300	1,330	1,277	1,520	1,293
	Total	18,077	18,280	18,059	19,294	19,299
Journalism and Mass Communications	Undergraduate	6,578	6,405	7,336	6,928	6,946
	Graduate	247	266	317	363	320
	Total	6,825	6,671	7,653	7,291	7,266
Law	Prof (Total)	6,359	5,749	5,864	5,918	6,032
Reserve Officers Training Corps	UG (Total)	337	375	376	352	410
Other Departments ¹	Undergraduate	3,718	3,467	3,493	4,012	4,092
	Graduate	136	162	133	153	68
	Professional	0	0	0	0	0
	Total	3,854	3,629	3,626	4,165	4,160
Total U of Nebr-Lincoln	Undergraduate	231,411	232,382	236,671	247,600	254,934
	Graduate	26,506	27,401	27,974	28,901	29,392
	Professional	7,167	6,534	6,566	7,074	7,678
	Total	265,084	266,317	271,211	283,575	292,004

¹ Includes Overseas Courses, Library, Foundations, Honors, Graduate College and JD Edwards Program

NOTE: Student Credit Hours (SCH) are as of the Census Date (sixth day of the semester).

Last Updated: September 15, 2008



Student Credit Hours by College and Student Level Spring - 5 Year Trend						
College		2005	2006	2007	2008	2009
Agricultural Sciences & Natural Resources	Undergraduate	13,851	13,549	14,973	16,040	18,054
	Graduate	3,523	3,859	3,970	4,230	4,125
	Professional				500	943
	Total	17,374	17,408	18,943	20,770	23,122
Architecture	Undergraduate	4,061	4,040	4,166	4,515	4,588
	Graduate	429	414	339	298	388
	Professional	663	703	638	639	682
	Total	5,153	5,157	5,143	5,452	5,658
Arts & Sciences	Undergraduate	105,475	107,783	110,887	115,772	117,144
	Graduate	7,636	8,121	8,104	7,905	8,011
	Total	113,111	115,904	118,991	123,677	125,155
Business Administration	Undergraduate	23,729	23,393	23,633	24,866	25,970
	Graduate	2,844	3,383	3,595	3,210	2,773
	Total	26,573	26,776	27,228	28,076	28,743
Education & Human Sciences	Undergraduate	24,900	23,796	24,540	25,139	26,478
	Graduate	7,074	7,021	7,445	7,660	7,278
	Total	31,974	30,817	31,985	32,799	33,756
Engineering	Undergraduate	14,774	14,355	14,632	14,996	15,349
	Graduate	2,640	2,666	2,788	3,056	3,336
	Total	17,414	17,021	17,420	18,052	18,685
Hixson - Lied College of Fine & Performing Arts	Undergraduate	15,441	15,678	15,584	15,472	16,358
	Graduate	1,278	1,305	1,236	1,443	1,316
	Total	16,719	16,983	16,820	16,915	17,674
Journalism and Mass Communications	Undergraduate	6,117	6,063	6,632	6,305	6,284
	Graduate	267	350	323	372	287
	Total	6,384	6,413	6,955	6,677	6,571
Law	Prof (Total)	5,930	5,719	5,886	5,888	6,115
Reserve Officers Training Corps	UG (Total)	315	293	339	307	305
Other Departments ¹	Undergraduate	3,826	3,785	3,557	4,088	4,783
	Graduate	80	128	83	22	29
	Professional	13	0	0	0	15
	Total	3,919	3,913	3,640	4,110	4,827
Total U of Nebr-Lincoln	Undergraduate	212,489	212,735	218,943	227,500	235,313
	Graduate	25,771	27,247	27,883	28,196	27,543
	Professional	6,606	6,422	6,524	7,027	7,755
	Total	244,866	246,404	253,350	262,723	270,611

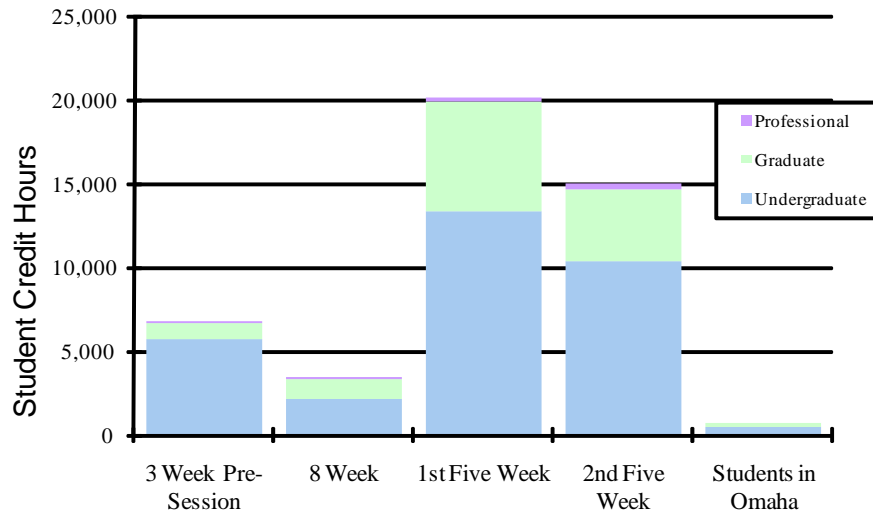
¹ Includes Overseas Courses, Library, Foundations, Honors, Graduate College, JD Edwards Program and Raikes School of Computer Science and Management.

NOTE: Student Credit Hours (SCH) are as of the Census Date (sixth day of the semester).

Last Updated: February 19, 2009



Summer Sessions 2009 Student Credit Hours



Summer Sessions 2009 Student Credit Hours				
Session	Undergraduate	Graduate	Professional	Total
3 Week Pre-Session	5,735	897	176	6,808
8 Week	2,188	1,199	39	3,426
1st Five Week	13,381	6,558	222	20,161
2nd Five Week	10,349	4,324	326	14,999
Students in Omaha	521	163	-	684
Total	32,174	13,141	763	46,078

Note: Omaha has four summer sessions, but they are scheduled differently than UNL. "Students in Omaha" is total credit hours for all Omaha summer sessions combined. Omaha data is for students enrolled in classes delivered in Omaha but administered by Lincoln.

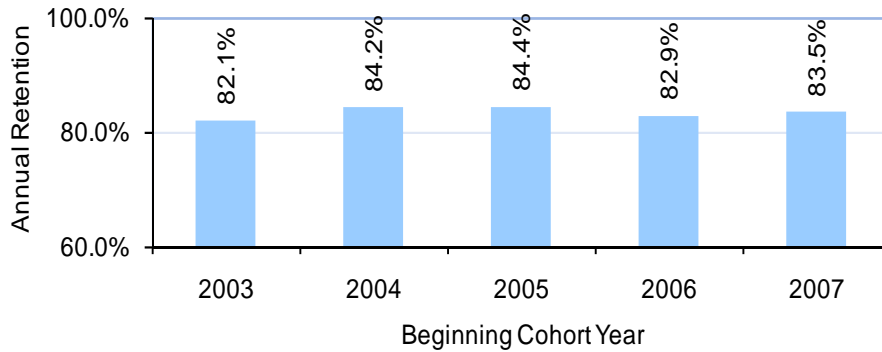
Last Updated: August 3, 2009



Student Retention and Graduation Rate Analysis
Retention Tracking of First-time, Full-time Freshman

Entering Cohort Year	1st Year	2nd Year	3rd Year
2003	82.1%	74.0%	69.9%
2004	84.2%	76.2%	72.4%
2005	84.4%	76.8%	72.2%
2006	82.9%	75.5%	
2007	83.5%		

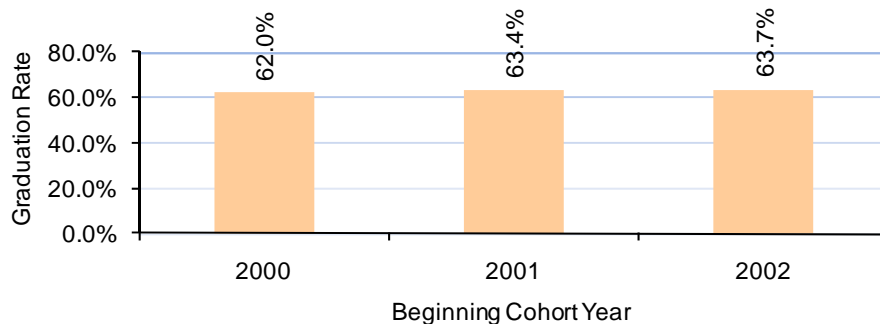
University of Nebraska - Lincoln
Year-to-Year Retention of First-time, Full-time Students
Tracking Entering Cohort



Graduation of First-time, Full-time, Degree-seeking Freshman

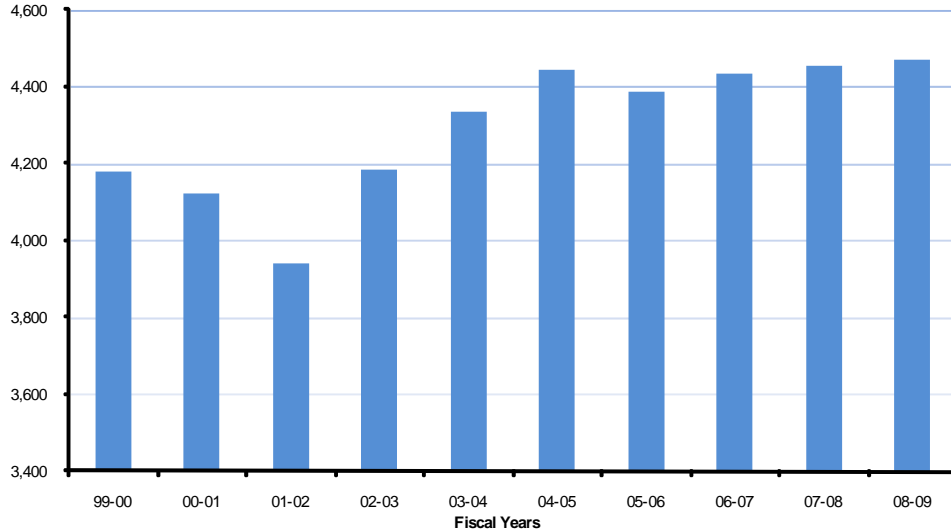
Entering Cohort Year	Percent Completing in		
	4 yrs	5 yrs	6yrs
2000	22.4%	54.8%	62.0%
2001	22.6%	55.1%	63.4%
2002	25.4%	56.5%	63.7%
2003	24.8%	55.7%	
2004	29.3%		

University of Nebraska - Lincoln
6-Year Graduate Rates of First-time, Full-time, Degree-seeking
Freshman





Total Degrees Conferred by the University of Nebraska - Lincoln
by Fiscal Year - 10 Year Trend



Trend of UNL Degrees Conferred by Type										
Degree Type	99-00	00-01	01-02	02-03	03-04	04-05	05-06	06-07	07-08	08-09
Other	3	3	5	5	7	4	14	8	12	8
Bachelor	3,115	2,997	2,897	2,980	3,119	3,267	3,187	3,217	3,246	3,219
Master	658	738	672	782	799	768	765	764	774	804
Post-Master	5	11	7	13	12	9	10	11	14	7
Prof - Arch	29	18	29	30	32	26	36	38	28	31
Prof - EHS								4	4	8
Prof - Law	119	120	117	123	131	138	128	124	123	134
Doctorate	251	235	213	254	236	234	245	270	255	257
TOTAL	4,180	4,122	3,940	4,187	4,336	4,446	4,385	4,436	4,456	4,468

Note: "Other" includes 2-year certificates and associate degrees. "Post-Master" includes 6-year graduate certificates, and graduate 6-year specialist (EDS) degrees. In order to match the total number of **master's** degrees reported to IPEDS, the MArch degrees should be added to the master's category. In order to match the total number of **doctoral** degrees reported to IPEDS, the Prof-EHS (Doctor of Audiology, or Au.D.) should be added to the doctorate degrees.

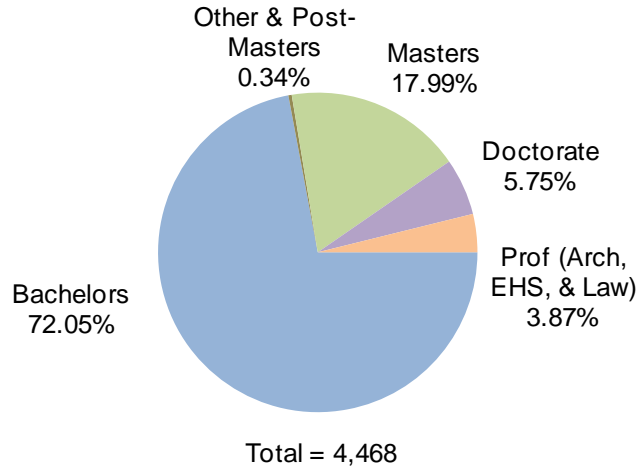
Prof - Law includes both the JD degree and beginning in 2008-09, the LLM degree.

A fiscal year represents the time period of July 1 through June 30 and includes August, December and May graduations.

Last Updated: September 10, 2009



**Degrees Conferred - Fiscal Year
July 1, 2008 through June 30, 2009**



Type and Number of Degrees Conferred by College July 1, 2008 through June 30, 2009							
College	Other	Bach	Mast	Post-Master	Prof	Doc	Total
Ag Sciences & Natural Resources		321	116			40	477
Architecture		77	10		31		118
Arts & Sciences		810	155			72	1,037
Business Admin		703	153			17	873
Education & Human Sciences		576	196	7	8	88	875
Engineering	8	445	100			28	581
Fine & Performing Arts		130	42			7	179
Grad College-Dean's Office			9			5	14
Journalism & Mass Communications		157	23				180
Law					134		134
Total	8	3,219	804	7	173	257	4,468

Note: "Other" includes associate degrees. "Post-Master" includes 6-year graduate certificates and graduate 6-year specialist (EDS) degrees. In order to match the total number of **master's** degrees reported to IPEDS, the College of Architecture Professional degrees should be added to the master's category. In order to match the total number of **doctoral** degrees reported to IPEDS, the Prof-EHS (Doctor of Audiology, or Au.D.) should be added to the doctoral degrees.

Professional Law degrees include the JD degree and the LLM degree.

A fiscal year represents the time period of July 1 through June 30 and includes August, December and May graduations.

Last Updated: September 10, 2009



Types of Degrees Currently Offered at UNL			
AS	Associate	MAG	Master of Agriculture
AuD	Doctor of Audiology	MArch	Master of Architecture
BA	Bachelor of Arts	MAT	Master of Arts for Teachers
BFA	Bachelor of Fine Arts	MBA	Master of Business Administration
BJ	Bachelor of Journalism	MCRP	Master of Community & Regional Planning
BLA	Bachelor of Landscape Architecture	MEd	Master of Education
BM	Bachelor of Music	MEng	Master of Engineering
BMEd	Bachelor of Music in Education	MFA	Master of Fine Arts
BS	Bachelor of Science	MLS	Master of Legal Studies
DMA	Doctor of Musical Arts	MM	Master of Music
DVM	Doctor of Veterinary Medicine ¹	MPA	Master of Professional Accountancy
EdD	Doctor of Education	MPE	Master of Physical Education
EdS	Educational Specialist	MS	Master of Science
JD	Juris Doctor	MScT	Master of Science for Teachers
LLM	Master of Laws	MST	Master of Secondary Teaching
MA	Master of Arts	PhD	Doctor of Philosophy
MAE	Master of Architectural Engineering	SXCT	Certificate of Specialization

Note: Other degrees may be awarded than those listed here because some programs are discontinued and current students are allowed to finish a degree even though it is no longer offered.

Note: Contact specific department or college for minors, options, specializations, and supplemental endorsements.

¹ Joint program with Iowa State. First two years of a four year program at UNL.

Last Updated: March 9, 2009



Academic Majors by College and Degree Level

College of Agricultural Sciences & Natural Resources									
Programs	Bachelors			Masters			Doctorate		Other
	BA	BS	Other	MA	MS	Other	PhD	Other	
Agribusiness (Also CBA)		X							
Agricultural & Biological Systems Engrg					X				
Agricultural Economics		X			X		X		
Agricultural Education		X							
Agricultural Journalism (Dual major)		X							
Agriculture						MAg			
Agronomy		X			X		X		
Animal Science		X			X		X		
Biochemistry (Also Arts & Sciences)		X			X		X		
Biometry					X				
Diversified Agricultural Studies		X							
Entomology					X		X		
Environmental Restoration Science		X							
Environmental Studies (Also A&S)	X	X							
Fisheries & Wildlife		X							
Food Science & Technology		X			X		X		
Food Technology for Companion Animals		X							
Forensic Science		X							
Grassland Ecology & Management		X							
Grazing Livestock Systems		X							
Horticulture		X			X		X		
Insect Science		X							
Integrative Biomedical Sciences							X		
Leadership Education					X				
Mechanized Systems Management		X			X				
Natural Resource & Environmental Economics		X							
Natural Resource Sciences					X		X		
Plant Biology (Also Arts & Sciences)		X							
Plant Protection Sciences		X							
Professional Golf Management		X							
Rangeland Ecosystems ¹		X							
Veterinary Medicine (combined prof program)								DVM	
Statistics					X		X		
Turfgrass & Landscape Management		X							
Veterinary Science (combined pre-prof program)		X			X				
Veterinary Technology		X							
Water Science		X							

¹ Degree in Rangeland Ecosystems will not be offered after Summer 2009.

Note: Contact specific department or college for minors, options, specializations, and supplemental endorsements.

Last Updated: March 9, 2009



Academic Majors by College and Degree Level

College of Architecture									
Programs	Bachelors			Masters			Doctorate		Other
	BA	BS	Other	MA	MS	Other	PhD	Other	
Architectural Studies		X							
Architecture					X				
Architecture (Professional Degree)						MArch			
Community & Regional Planning						MCRP			
Interior Design		X							
Landscape Architecture			BLA						

Note: Contact specific department or college for minors, options, specializations, and supplemental endorsements.

Last Updated: March 9, 2009



Academic Majors by College and Degree Level

College of Arts & Sciences									
Programs	Bachelors			Masters			Doctorate		Other
	BA	BS	Other	MA	MS	Other	PhD	Other	
Actuarial Science (Also CBA)	X	X			X				
Anthropology	X	X		X					
Biochemistry (Also Ag Sci & Nat Res)		X			X		X		
Biological Sciences	X	X			X		X		
Chemistry	X	X			X		X		
Classics	X	X		X					
Classical Languages	X								
Classics and Religious Studies	X	X							
Communication Studies	X	X		X			X		
Computer Science (Also Engineering)	X	X			X		X		
Dentistry (combined pre-prof program)	X	X							
Economics (Also CBA)	X	X		X			X		
English (Also Fine & Performing Arts)	X	X		X			X		
Environmental Studies (Also Ag Sci)	X	X							
Ethnic Studies	X								
European Studies	X	X							
Film Studies	X	X							
French	X	X							
Geography	X	X		X			X		
Geology	X	X							
Geosciences					X		X		
German	X	X							
Great Plains Studies Program	X	X							
Greek	X	X							
History	X	X		X			X		
Individualized Program of Studies	X	X							
Information Technology							X		
International Studies	X	X							
Latin	X	X							
Latin American Studies	X	X							
Law (combined pre-prof program)	X	X							
Mathematics/Mathematics & Statistics	X	X		X	X	MAT, MScT	X		
Medicine (combined pre-prof program)	X	X							
Medieval and Renaissance Studies	X								

continued on next page

Note: Contact specific department or college for minors, options, specializations, and supplemental endorsements.

Last Updated: March 9, 2009



Academic Majors by College and Degree Level

College of Arts & Sciences continued									
Programs	Bachelors			Masters			Doctorate		Other
	BA	BS	Other	MA	MS	Other	PhD	Other	
Meteorology-Climatology	X	X							
Modern Languages & Literatures				X			X		
Pharmacy (combined pre-prof prgrm)	X	X							
Philosophy	X	X		X			X		
Physics (Astronomy Option)		X							
Physics/Physics & Astronomy	X	X			X		X		
Plant Biology (also Ag & Natl Resources)	X	X							
Political Science	X	X		X			X		
Psychology	X	X		X			X		
Russian	X	X							
Sociology	X	X		X			X		
Spanish	X	X							
Speech-Language Pathology & Audiology	X	X			X				
Survey Research & Methodolgy					X		X		
University Studies (Also Fine & Performing Arts)	X	X							
Women's & Gender Studies	X	X							

Note: Contact specific department or college for minors, options, specializations, and supplemental endorsements.

Fine & Performing Arts Majors that are offered as a SECOND major in Arts & Sciences

Programs	Bachelors			Masters			Doctorate		Other
	BA	BS	Other	MA	MS	Other	PhD	Other	
Art (also in Fine & Performing Arts)	X								
Art History & Criticism (also in Fine & Performing Arts)	X								
Dance (also in Fine & Performing Arts)	X								
Music (also in Fine & Performing Arts)	X								
Theatre (also in Fine & Performing Arts)	X								

Note: Contact specific department or college for minors, options, specializations, and supplemental endorsements.

Last Updated: March 9, 2009



Academic Majors by College and Degree Level

College of Business Administration									
Programs	Bachelors			Masters			Doctorate		Other
	BA	BS	Other	MA	MS	Other	PhD	Other	
Accountancy (Professional)						MPA			
Accounting		X							
Actuarial Science (Also A&S)	X	X			X				
Agribusiness (Also Col of Ag & Nat Res)		X							
Business (Interdepartmental Area)				X		MBA	X ¹		
Business Administration		X							
Economics (Also A&S)	X	X		X			X		
Finance		X							
International Business		X							
Management		X							
Marketing		X							

¹ Students are normally required to choose four fields of emphasis. At least half of the fields must be in the Business Area, including Banking, Finance, Financial Accounting, Insurance, International Marketing, Investments, Managerial Accounting, Management Information Systems, Management Science, Organization and Management Theory, Marketing, Marketing Channels, Organizational Behavior/Human Resources Management, Production and Operations Management, Promotion, Strategic Management, and Taxation. Fields in the Department of Economics may be included in the program.

Note: Contact specific department or college for minors, options, specializations, and supplemental endorsements.

Last Updated: July 31, 2009



Academic Majors by College and Degree Level

College of Education and Human Sciences									
Programs	Bachelors			Masters			Doctorate ¹		Other
	BA	BS	Other	MA	MS	Other	PhD	Other	
Adult & Continuing Education				X					
Athletic Training		X							
Audiology & Hearing Science								AuD	
Child, Youth and Family Studies		X ²			X				
Education (See Endorsements)		X							
Educational Admin & Supervision									SXCT
Educational Administration				X		MEd		EdD ³	
Educational Psychology				X					EdS
Educational Studies							X	EdD	
Elementary Education		X							
Health & Human Performance						MPE			
Hospitality, Restaurant & Tourism Mgmt		X							
Human Resources & Family Sciences					X				
Human Sciences							X	EdD	
Middle Grades Education		X							
Nutrition & Health Sciences ⁴					X		4		
Nutritional Science & Dietetics		X ⁵							
Psychological Studies in Education							X	EdD	
Secondary Education		X							
Special Ed & Communication Disorders									EdS
Special Education				X		MEd			
Speech-Language Pathologist		X							
Speech-Language Pathology & Audiology (Also A&S)	X	X			X				
Teaching, Learning & Teacher Education				X		MEd; MST			EdS
Technical Education		X							
Textiles, Clothing & Design		X ⁶		X	X				
Vocational & Adult Education				X		MEd			
Vocational Education						MEd			

see next page for notes

Last Updated: March 9, 2009



College of Education and Human Sciences continued

¹ College of Education & Human Sciences (CEHS) offers two doctoral degrees, both the EdD and the PhD, under three majors: educational studies, human sciences, and psychological studies in education. In addition, CEHS participates in three additional doctoral majors (audiology, educational administration, and nutrition).

The **Educational Studies** major includes six specializations. Instructional Technology; Internet-based Education; and Teaching, Curriculum & Learning are hosted by the Dept of Teaching, Learning & Teacher Education. Special Education and Audiology and Hearing Science are sponsored by the Dept of Special Education & Communication Disorders. The Dept of Educational Administration hosts Educational Leadership & Higher Education and co-hosts Architecture Education with Architecture.

The **Human Sciences** major includes six specializations. Communication Disorders is housed in the Dept of Special Education & Communication Disorders; Child, Youth and Family Studies and Gerontology are sponsored by the Dept of Child, Youth and Family Studies; Nutrition & Health Sciences is hosted by the Dept of Nutrition & Health Sciences; Textiles, Clothing & Design is based in the Dept of Textiles, Clothing & Design; and Leadership Studies is housed in the Dept of Agricultural Leadership, Education & Communication.

The **Psychological Studies in Education** major includes four specializations, all hosted by the Dept of Educational Psychology: Cognition, Learning & Development; Counseling Psychology; Qualitative & Quantitative Psychometric Methods in Education; and School Psychology.

² Options in Child Dev/Early Childhood Ed; Family and Consumer Sciences Education; Family and Consumer Sciences/Journalism and Mass Communications; Family Science; and Inclusive Early Childhood Education.

³ The EdD in Educational Administration is a joint program with the University of Nebraska at Omaha. Students may pursue a course of study in elementary-secondary administration.

⁴ The Department of Nutrition and Health Sciences also participates in the Interdepartmental Nutrition major (MS and PhD).

⁵ Options in Culinology; Dietetics; Dietetics and Exercise Science; Dietetics/Journalism and Mass Communications; Nutrition, Exercise and Health Science; Nutrition Science. Option in Nutrition, Fitness and Health Promotion no longer available after Summer 2009.

⁶ Options include Merchandising, Textile and Apparel Design; Textile Science; Textiles, Clothing and Design/Journalism and Mass Communications.

Last Updated: March 9, 2009



Endorsements in College of Education & Human Sciences ¹	
*Requires second endorsement	
Art (K-12)	Language Arts
* Biology	Latin
Business Education	Marketing Education & Basic Business
Business Education / Cooperative Education	Marketing Ed / Basic Business-Cooperative Ed
* Chemistry	Mathematics
Deaf or Hard of Hearing Education	Middle Grades Education
* Earth Science	Natural Science
Economics & History	* Physical Education (7-12)
Elementary Education	Physical Education (K-6 and 7-12)
Elementary Education Dual Programs	Physical Science
Elementary Ed & Art (K-6)	* Physics
Elementary Ed & Mild/Moderate Disabilities (K-6)	Political Science & History
Elementary Ed & Special Ed - Mild/Mod Disabilities (K-9)	*Reading & Writing (7-12)
Elementary Ed & Early Childhood Educ.	Russian
Elementary Ed - Physical Education (K-6)	Social Science
English	Spanish
French	Special Education - Mild/Moderate Disabilities (7-12)
Geography & History	Special Education - Mild/Moderate Disabilities (K-9)
German	Speech & English
Health & Physical Education (K-12)	Speech, Drama & English
* Health Education	Speech-Language Pathologist
* History (and a non-social science discipline)	Theatre & English
Industrial Technology Education	Trade & Industrial Education
Journalism & Mass Communications and English	

Supplemental Endorsements in College of Education & Human Sciences	
Coaching	French 7-12 and French K-6
Cooperative Education	German 7-12 and German K-6
Elementary Education & French (K-6) (French is supplemental)	Information Technology
Elementary Education & German (K-6) (German is supplemental)	Spanish 7-12 and Spanish K-6
Elementary Education & Spanish (K-6) (Spanish is supplemental)	Vocational Special Needs (Postbaccalaureate endorsement)
English as a Second Language	
Note: Contact specific department or college for minors, options, specializations, and supplemental endorsements.	

¹ For Agricultural Education, see College of Agricultural Sciences and Natural Resources. For Music Education see Hixson-Lied College of Fine and Performing Arts.

Last Updated: March 9, 2009



Academic Majors by College and Degree Level

College of Engineering									
Programs	Bachelors			Masters			Doctorate		Other
	BA	BS	Other	MA	MS	Other	PhD	Other	
Agricultural Engineering		X							
Architectural Engineering		X			X	MAE			
Biological Systems Engineering		X							
Chemical Engineering		X			X				
Civil Engineering		X			X				
Computer Engineering (Also A&S)		X							
Construction Engineering		X							
Construction Engineering Technology		X							
Construction Management		X							
Electrical Engineering		X			X				
Electronics Engineering		X							
Engineering						MEng	X ¹		
Engineering Mechanics					X				
Environmental Engineering					X				
Fire Protection Technology									ATC
Industrial & Mgt Systems Engineering					X				
Industrial Engineering		X							
Interdisciplinary Studies		X							
Manufacturing Systems Engineering					X				
Mechanical Engineering		X			X				
Telecommunications Engineering					X				

¹ A PhD degree may be obtained in the following fields: Agricultural and Biological Systems Engineering; Architectural Engineering; Biomedical Engineering; Civil Engineering; Chemical & Materials Engineering; Computer Engineering; Electrical Engineering; Engineering Mechanics; Industrial, Management Systems & Manufacturing Engineering; and Mechanical Engineering.

Note: Contact specific department or college for minors, options, specializations, and supplemental endorsements.

Last Updated: March 9, 2009



Academic Majors by College and Degree Level

Hixson-Lied College of Fine & Performing Arts									
Programs	Bachelors			Masters			Doctorate		Other
	BA	BS	Other	MA	MS	Other	PhD	Other	
Art	X		BFA			MFA			
Art History & Criticism	X			X					
Dance	X								
Interdisciplinary Studies (Also A&S)	X								
Music	X		BM			MM		DMA	
Music Education			BMEd						
Theatre / Theatre Arts	X ¹		BFA ²			MFA			
University Studies (Also A&S)	X								

¹ Options are available in Performance; Directing, Dramaturgy and Stage Management (not offered after Summer 2009); and Production.

² Options are available in Design/Technical Production and Film and New Media.

Note: Contact specific department or college for minors, options, specializations, and supplemental endorsements.

Last Updated: March 9, 2009

A&S Majors that are offered as a SECOND major in Fine & Performing Arts									
Programs	Bachelors			Masters			Doctorate		Other
	BA	BS	Other	MA	MS	Other	PhD	Other	
Anthropology	X								
Biological Sciences	X								
Chemistry	X								
Classics	X								
Classics and Religious Studies	X								
Communication Studies	X								
Economics (Also CBA)	X								
English	X								
Film Studies	X								
French	X								
German	X								
History	X								
International Studies	X								
Mathematics	X								
Philosophy	X								
Political Science	X								
Psychology	X								
Sociology	X								
Spanish	X								
Speech-Language Pathology & Audiology	X								

Note: Contact specific department or college for minors, options, specializations, and supplemental endorsements.

Last Updated: March 9, 2009



Academic Majors by College and Degree Level

Graduate College (Dean's Office)									
Programs	Bachelors			Masters			Doctorate		Other
	BA	BS	Other	MA	MS	Other	PhD	Other	
Environmental Health, Occupational Health & Toxicology					X		X		
Legal Studies						MLS			
Nutrition					X		X		
Toxicology ¹					X		X		

¹ MS Program ends Summer 2010 and PhD Program ends Summer 2011. They have been renamed Environmental Health, Occupational Health & Toxicology.

Note: Contact specific department or college for minors, options, specializations, and supplemental endorsements.

Last Updated: March 9, 2009

Academic Majors by College and Degree Level

College of Journalism and Mass Communications									
Programs	Bachelors			Masters			Doctorate		Other
	BA	BS	Other	MA	MS	Other	PhD	Other	
Advertising			BJ						
Broadcasting			BJ						
Journalism & Mass Communications				X					
News and Editorial			BJ						

Note: Contact specific department or college for minors, options, specializations, and supplemental endorsements.

Last Updated: March 9, 2009

Academic Majors by College and Degree Level

Law College									
Programs	Bachelors			Masters			Doctorate		Other
	BA	BS	Other	MA	MS	Other	PhD	Other	
Law								JD	
Space and Telecommunications Law						LLM			

Note: Contact specific department or college for minors, options, specializations, and supplemental endorsements.

Last Updated: March 9, 2009



2008 - 2009 Academic Year Tuition Rates

Statements concerning tuition and fees in this schedule are by way of announcement only and are not to be regarded as an offer of contract. The University of Nebraska-Lincoln expressly reserves the right to change any and all fees and/or tuition and other charges at any time without notice in advance of such a change.

Tuition -The University per credit hour tuition rates are:

Undergraduate Tuition (Course Numbers 100-499)	Resident	Non-Resident
UNL Undergraduate Courses	\$179.75	\$533.75
Criminal Justice, Gerontology, and Public Administration (UNO)	\$164.00	\$483.25
Dental Hygiene, Nursing Medicine (UNMC)	\$179.75	\$533.75
Nursing (UNMC)	\$227.75	\$666.75
Distance Education "F" Courses	\$179.75	\$179.75
Distance Education "S" Courses		
-Meat Culinology Certificate Program (Animal Science and Nutrition)	\$179.75	\$337.00
Distance Education "S" Courses		
-Nursing	\$227.75	\$666.75
Distance Education "S" Courses		
-All Other "S" Courses	\$179.75	\$337.00
Distance Education "X" Courses -Nursing	\$227.75	\$666.75
Distance Education "X" Courses -All other "X" Courses	\$179.75	\$533.75

Graduate Tuition (Course Numbers 800-999)	Resident	Non-Resident
UNL Graduate Courses	\$237.50	\$640.25
Criminal Justice, Gerontology & Public Administration (UNO)	\$204.25	\$537.75
Distance Education "F" Courses	\$237.50	\$237.50
Distance Education "S" Courses		
-Masters in Architecture with Specialization in Interior Design	\$237.50	\$474.00
Distance Education "S" Courses		
-Masters Engineering Courses	\$237.50	\$799.25
Distance Education "S" Courses		
-Entomology Courses	\$237.50	\$455.00
Distance Education "S" Courses		
Education, Educational Administration, Educational Psychology	\$237.50	\$455.00
Distance Education "S" Courses		
-Master of Agriculture	\$237.50	\$455.00
Distance Education "S" Courses		
-Master Textiles, Clothing & Design	\$237.50	\$383.75
Distance Education "S" Courses		
Masters in Journalism	\$237.50	\$455.00
Distance Education "S" Courses		
-All Other "S" Courses	\$237.50	\$350.00

Professional Tuition (Course Numbers 500-799)	Resident	Non-Resident
Law	\$250.50	\$671.50
Law-Space and Telecomm (flat rate per semester)	\$12,500.00	
Architecture	\$237.50	\$640.25



Explanation of University Fees

Dental Tuition (UNMC) -Dental tuition is charged at a flat rate per term. The resident rate is \$8,182.00 while the non-resident rate is \$22,105.00.

Other College of Dentistry Fees -Dentistry and Dental Hygiene students are required to pay Books and Instruments Fees and may be required to pay Equipment Replacement Fees.

University Program and Facilities Fees -In addition to tuition, all enrolled students (except students enrolled only in Distance Education "S", "F", and "X" courses) must pay University Program and Facilities Fees based on their total hours of enrollment each semester. The rates are as listed below:

Hours of Enrollment	Rate
1 to 6 hours	\$242.00
7 or more hours	\$420.70

Technology Fee -A student technology fee was initiated the first semester 1997 to provide information technology resources to all UNL students. This year the fee is \$7.35 per credit hour with a \$110.25 limit each semester.

Library Fee -A library fee was initiated the first semester 2003. This year the fee is \$3 per credit hour.

Law Library Fee -A Law College library and professional skills fee of \$1,050 per semester will be assessed to Law students.

Engineering Fee -An engineering fee of \$40 per credit hour will be assessed. This fee is assessed on all courses offered by the College of Engineering and the Departments of Computer Science and Engineering and Biological Systems Engineering (this includes Agricultural Engineering and Mechanical Systems Management).

Course Fees - Courses with a special fee are listed in the Schedule of Classes followed by the notation, "Special Fee" and a dollar amount.

Architecture Professional Fee -An architecture professional fee of \$24 per credit hour will be assessed to all courses offered by the College of Architecture.

Registration Fee -A registration fee of \$20 is due each semester a student registers for classes.

Late Registration Fee -A \$25 fee is due for processing an initial registration during the Late Registration period.

International Student Fee -A one-time \$150 fee is due the first semester an international student is enrolled. A \$35 fee is due in subsequent semesters

Distance Education Fee - All distance education courses will be assessed a \$25 per hour fee.

Late Payment Fee -A late payment fee of \$20 is assessed each month on delinquent accounts by the Office of Student Accounts.

NCard -A charge of \$20 is assessed for your original NCard and each time a replacement card is needed.

Health Insurance -All nonimmigrant international students must have health insurance as a condition of their enrollment and will be automatically billed for health insurance, \$459.00 for the fall term and \$703.00 for the spring term, on their billing statements. Nonimmigrant international students taking less than seven credit hours will also be assessed the Health Center fee, \$140.70 each semester, on their billing statement. For those taking seven or more credit hours this fee is already paid as a part of their University Program and Facilities Fee.

Last Updated: September 18, 2008



Refund Policy

Fall Semester - Students who withdraw from, or drop, all first semester courses on or before September 2, 2008, will not incur any charges. For courses officially dropped or withdrawals processed after September 2nd, a portion or all of the tuition and fees will be charged, depending on the date of the drop or withdrawal. The following percentages determine the amount of tuition and fees to be charged for dropped courses or withdrawals from the University.

Spring Semester - Students who withdraw from, or drop, all second semester courses on or before January 20, 2009 will not incur any charges. For courses officially dropped or withdrawals processed after January 20th, a portion or all of the tuition and fees will be charged, depending on the date of the drop or withdrawal. The following percentages determine the amount of tuition and fees to be charged for dropped courses or withdrawals from the University.

Period of Enrollment*	Period of Enrollment*	Chargeable Tuition & Fees
Fall	Spring	
August 25 - September 2	January 12 - 20	0%
September 3 - 5	January 21 - 23	25%
September 6 - 12	January 24 - 30	50%
September 13 - 19	January 31 - February 6	75%
After September 19	After February 6	100%

*The official period of enrollment is the time from the beginning of the semester through the day you drop or withdraw on eNRoll, or file your "Drop/Add Form" or "Cancellation/Withdrawal Form" with Registration and Records, 107 Canfield Administration Building. Only in the case of a timely notification of unexpected hospitalization of the student, the death of a member of the student's immediate family living in the student's household, or an University error may the effective date of the drop or withdrawal be adjusted to the date of the occurrence of the event. Proper documentation will be required to determine the adjusted effective date.

Tuition and Fee Due Date - The tuition and fee due dates for the fall 2008 and spring 2009 terms are September 10, 2008 and February 11, 2009 respectively.

Distance Education "F", "S", and "X" Courses - The type of course you are taking is notated in the online Schedule of Classes under "Group Code". In the printed Schedule of Classes, this same information is indicated under "Type."

This listing does not include all fees which may be assessed by the University of Nebraska -Lincoln.

Last Updated: September 18, 2008



COST EXAMPLE FOR THE 2008-2009 ACADEMIC YEAR

Below is an example of the costs you may be charged here at the University. This is only an estimation and may vary by student.

UNDERGRADUATE (Based upon an average enrollment of 15 credit hours per semester. Annual costs are based on two semesters of enrollment.)

	Resident			Nonresident		
	Rate	Semester	Annual	Rate	Semester	Annual
Tuition & Required Fees:						
Tuition per Credit Hour	\$179.75	\$2,696.25	\$5,392.50	\$533.75	\$8,006.25	\$16,012.50
Technology Fee per Credit Hour	\$7.35	\$110.25	\$220.50	\$7.35	\$110.25	\$220.50
Library Fee per Credit Hour	\$3.00	\$45.00	\$90.00	3.00	45.00	90.00
Registration Fee per Semester	\$20.00	\$20.00	\$40.00	\$20.00	\$20.00	\$40.00
University Program & Facilities Fees per Semester:	\$420.70	\$420.70	\$841.40	\$420.70	\$420.70	\$841.40
Course Fees (Estimated) per semester	\$50.00	\$50.00	\$100.00	\$50.00	\$50.00	\$100.00
Subtotal		\$3,342.20	\$6,684.40		\$8,652.20	\$17,304.40
¹ Housing -Room & Board	\$3,510.00	\$3,510.00	\$7,020.00	\$3,510.00	\$3,510.00	\$7,020.00
Estimated Totals		\$6,852.20	\$13,704.40		\$12,162.20	\$24,324.40

¹ **Housing** -Room & Board (double room/7 day meal plan -regular hall) Note: Cost per semester is not equally split as is shown here. See Housing for a breakdown by specific term.

GRADUATE (Based upon an average enrollment of 9 credit hours per semester. Annual costs are based on two semesters of enrollment.)

	Resident			Nonresident		
	Rate	Semester	Annual	Rate	Semester	Annual
Tuition & Required Fees:						
Tuition per Credit Hour	\$237.50	\$2,137.50	\$4,275.00	\$640.25	\$5,762.25	\$11,524.50
Technology Fee per Credit Hour	\$7.35	\$66.15	\$132.30	\$7.35	\$66.15	\$132.30
Library Fee per Credit Hour	\$3.00	27.00	54.00	3.00	27.00	54.00
Registration Fee per Semester	\$20.00	\$20.00	\$40.00	\$20.00	\$20.00	\$40.00
University Program & Facilities Fees per Semester:	\$420.70	\$420.70	\$841.40	\$420.70	\$420.70	\$841.40
Course Fees (Estimated) per semester	\$25.00	\$25.00	\$50.00	\$25.00	\$25.00	\$50.00
Subtotal		\$2,696.35	\$5,392.70		\$6,321.10	\$12,642.20
² Housing -Room & Board	\$3,510.00	\$3,510.00	\$7,020.00	\$3,510.00	\$3,510.00	\$7,020.00
Estimated Totals		\$6,206.35	\$12,412.70		\$9,831.10	\$19,662.20

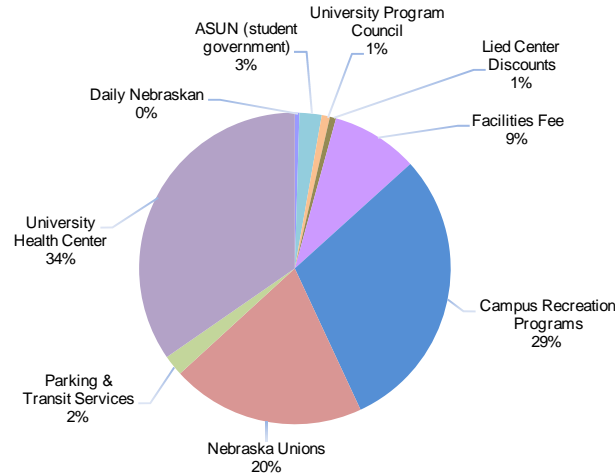
² **Housing** -Room & Board (double room/7 day meal plan -regular hall) Note: Cost per semester is not equally split as is shown here. See Housing for a breakdown by specific term.

Departmental Fees not Included in Estimate Above	
Law Library per semester	\$1,050.00
Engineering Fee per credit hour	\$40.00
International Student Fee per semester	\$35.00
Architecture Fee per credit hour	\$24.00
Distance Education Fee per credit hour	\$25.00
Graduate Assistant Insurance not Covered by Assistantship:	
First Semester	\$96.00
Second Semester	\$148.00

Last Updated: October 31, 2008



Allocation of Student Fees Per Student 2008 - 2009



		Per Student Per Semester Assessment*	Projected Annual Revenue
Fund A (Student Organizations)			
	<i>Daily Nebraskan</i>	\$ 1.94	\$ 81,957
	ASUN (student government)	9.71	430,362
	University Program Council	3.60	159,639
	Lied Center Discounts	2.65	117,500
	Subtotal	17.90	789,458
Fund B (Institutional Obligations and Student Services Agencies)			
	Campus Recreation Programs	125.26	5,549,097
	Nebraska Unions - General Operations	78.71	3,486,628
	Nebraska Unions - Newspaper Program	5.94	263,142
	Parking & Transit Services	9.16	405,577
	University Health Center - General Operations	140.70	5,388,997
	University Health Center - Counseling & Psychological Svs	4.93	218,575
	Facilities Fee	38.00	1,419,376
	Contingency Fund	0.10	3,830
	Subtotal	402.80	16,735,222
Total for Fund A & B		\$ 420.70	\$ 17,524,680

*Based on 7 or more credit hours per semester

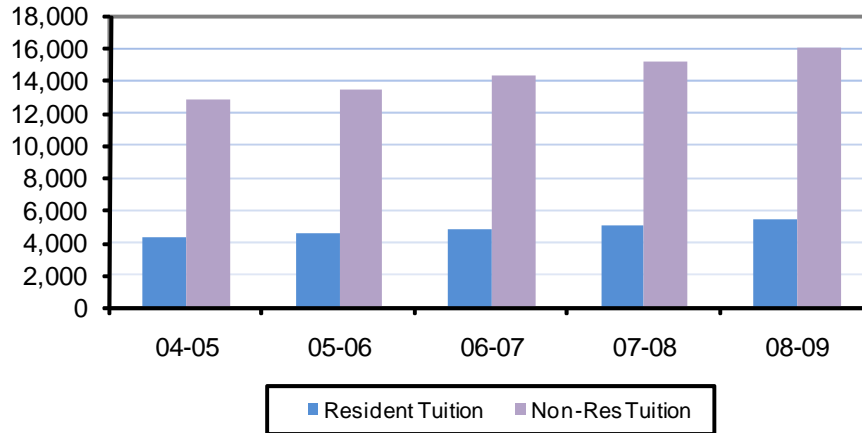
Note: Students may request a refund of part or all of the Fund A assessments.

Source: University Program and Facilities Fees Information Brochure, 2008-2009

Last Updated: September 18, 2008



Undergraduate Full-Time Tuition, Required Fees and Room & Board 5 Year Trend ¹



	2004-05	2005-06	2006-07	2007-08	2008-09
Undergraduate Tuition					
Resident	4,312.50	4,530.00	4,800.00	5,085.00	5,392.50
Non-Resident	12,802.50	13,440.00	14,250.00	15,105.00	16,012.50
Required Fees	955.50	1,010.00	1,067.00	1,131.00	1,191.90
Room & Board (on campus)	5,555.00	5,861.00	6,183.00	6,523.00	6,882.00

UG per-credit-hour charges					
Resident	143.75	151.00	160.00	169.50	179.75
Non-Resident	426.75	448.00	475.00	503.50	533.75

HEPI ²	231.5	239.8	251.8	260.3	269.7
-------------------	-------	-------	-------	-------	-------

¹ Typical tuition, required fees and room & board for a full-time undergraduate student for the full academic year as reported for Common Data Set.

² Higher Education Price Index (HEPI) measures the average relative level in the prices of a fixed market basket of goods and services purchased by colleges and universities each year through current fund educational and general expenditures excluding expenditures for research. It is a tool enabling schools to determine increases in funding necessary to maintain real purchasing power and investment. HEPI and major component values are reported for fiscal years 1961 through the latest completed fiscal year. For more information please go to the following website:

http://www.commonfund.org/Templates/Generic/RESOURCE_REQUEST/target.pdf?RES_GUID=1322EC61-D795-484A-BD5F-840091127595

Last Updated: September 18, 2008



Student Financial Aid Awards by Type - Three Year Trend

	2005-06		2006-07		2007-08	
	Need-Based \$	Non-Need \$	Need-Based \$	Non-Need \$	Need-Based \$	Non-Need \$
Scholarships/Grants						
Federal	8,272,412	1,527,728	9,212,382	1,405,441	11,410,250	1,167,156
State	1,639,807	0	1,692,899	0	2,097,237	0
Institutional 1\	14,587,301	15,921,619	15,000,002	17,037,830	17,176,433	17,683,618
External Source Scholarships & Grants	2,981,088	3,171,089	3,430,008	2,819,525	4,435,941	2,720,424
Total Scholarships/Grants	27,480,608	20,620,436	29,335,291	21,262,796	35,119,861	21,571,198
Self Help						
Loans from all Sources (excluding parent loans)	26,432,263	16,402,214	27,691,993	16,846,107	31,527,570	16,508,706
Federal Work-Study	1,972,288	0	2,271,727	0	2,662,982	0
Parent Loans	9,545,709	13,853,844	10,678,108	15,051,205	10,666,615	13,785,475
Athletic Awards	0	5,260,278	0	5,796,872	0	6,256,294
% Graduating Class Receiving Financial Aid	63%		61%		61%	
Avg Cumulative Debt of Graduates	\$18,119		\$19,075		\$18,958	

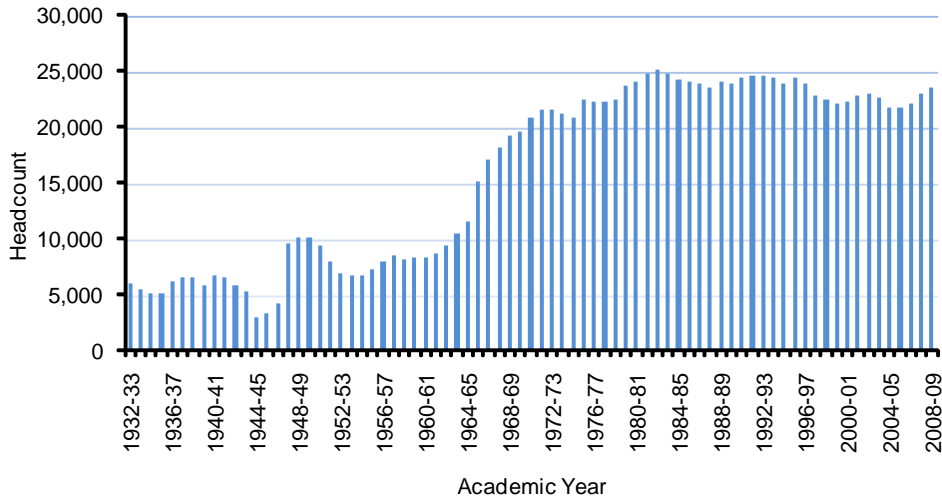
1\ Institutional includes endowment, alumni or other awards and external funds awarded by the college excluding athletic aid.

Source: Common Data Set

Last Updated: February 11, 2009



**Total Enrollment
Fall Semester 1932-33 to 2008-09**



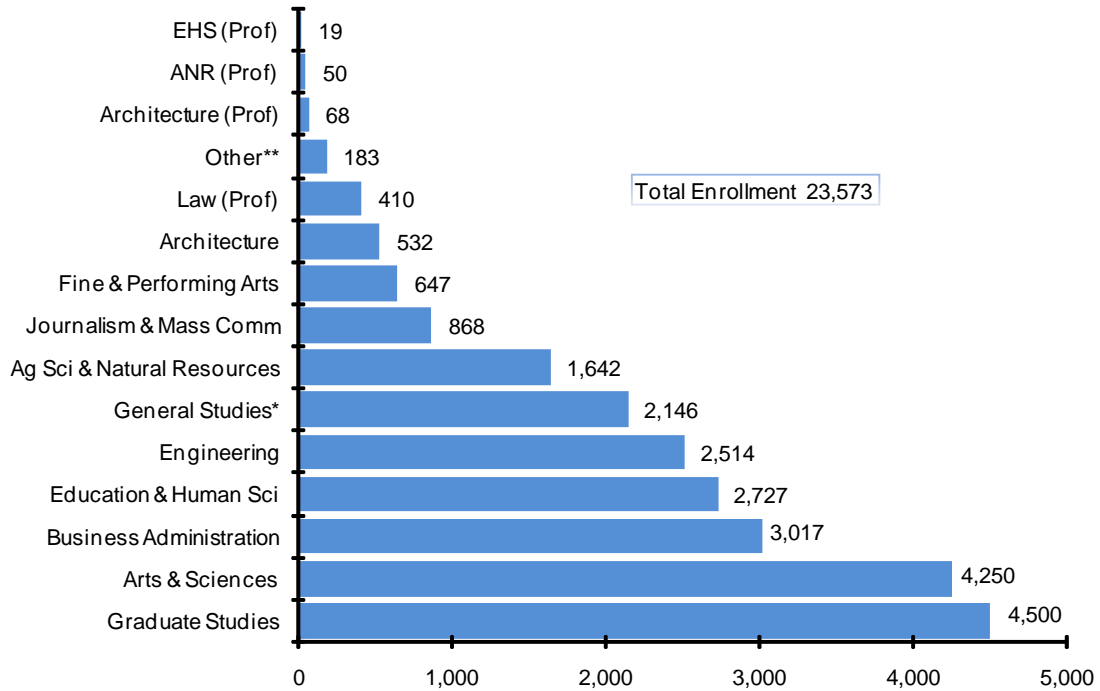
UNL Fall Semester Headcount Enrollment								
1932-33 5,413	1933-34 5,093	1934-35 5,075	1935-36 6,230	1936-37 6,552	1937-38 6,595	1938-39 5,752	1939-40 6,779	1940-41 6,491
1941-42 5,823	1942-43 5,288	1943-44 3,035	1944-45 3,265	1945-46 4,266	1946-47 9,648	1947-48 10,153	1948-49 10,073	1949-50 9,416
1950-51 8,033	1951-52 6,952	1952-53 6,684	1953-54 6,771	1954-55 7,197	1955-56 7,899	1956-57 8,425	1957-58 8,134	1958-59 8,356
1959-60 8,411	1960-61 8,711	1961-62 9,436	1962-63 10,401	1963-64 11,466	1964-65 12,901	1965-66 15,179	1966-67 17,051	1967-68 18,067
1968-69 19,150	1969-70 19,618	1970-71 20,810	1971-72 21,541	1972-73 21,581	1973-74 21,160	1974-75 20,892	1975-76 22,380	1976-77 22,179
1977-78 22,256	1978-79 22,477	1979-80 23,661	1980-81 24,128	1981-82 24,786	1982-83 25,075	1983-84 24,789	1984-85 24,228	1985-86 24,020
1986-87 23,899	1987-88 23,469	1988-89 23,985	1989-90 23,926	1990-91 24,453	1991-92 24,620	1992-93 24,573	1993-94 24,491	1994-95 23,854
1995-96 24,320	1996-97 23,887	1997-98 22,827	1998-99 22,408	1999-00 22,142	2000-01 22,268	2001-02 22,764	2002-03 22,988	2003-04 22,559
2004-05 21,792	2005-06 21,675	2006-07 22,106	2007-08 22,973	2008-09 23,573				

NOTE: Administrative site enrollments are shown from 1979-80 to present. (See Factbook Glossary for definition of Administrative Site.)

Last Updated: September 15, 2008



Enrollment by College Fall 2008



Enrollment by College, Fall 2008			
College	Number of Students	College	Number of Students
Ag Sci & Natural Resources	1,642	Engineering	2,514
ANR (Prof)	50	Fine & Performing Arts	647
Architecture	532	General Studies*	2,146
Architecture (Prof)	68	Graduate Studies	4,500
Arts & Sciences	4,250	Journalism & Mass Comm	868
Business Administration	3,017	Law (Prof)	410
Education & Human Sci	2,727	Other**	183
EHS (Prof)	19	Total	23,573

*General Studies includes College of Public Administration

**Other includes Intercampus and Visitors

Last Updated: September 15, 2008



**Enrollment by College & Student Level
Fall Semester 2008**

Undergraduate Headcount Enrollment								
	1st Time Freshmen	Other Freshmen	Sophomore	Junior	Senior	Unclassified	Total	New Transfers
Ag Sci & Nat Resources	335	61	323	397	524	2	1,642	124
Architecture	152	25	106	112	135	2	532	33
Arts & Sciences	881	172	815	1,162	1,220	0	4,250	225
Business Admin	563	165	611	799	879	0	3,017	138
Education & Human Sci	437	101	558	709	921	1	2,727	140
Engineering	538	110	465	569	808	24	2,514	117
Fine & Performing Arts	132	24	131	146	214	0	647	23
Journalism & Mass Communications	177	31	188	244	228	0	868	25
General Studies (includes Public Affairs)	985	298	540	235	88	0	2,146	132
Other (Includes Intercampus & Visitors)	0	15	0	0	1	167	183	0
Total	4,200	1,002	3,737	4,373	5,018	196	18,526	957

* "New Transfers" are a subset of total enrollment.

Graduate and Professional Headcount Enrollment			
	1st Time	Not 1st Time	Total
Graduate	701	3,085	3,786
Graduate - Non-Degree	249	465	714
Total Graduate	950	3,550	4,500

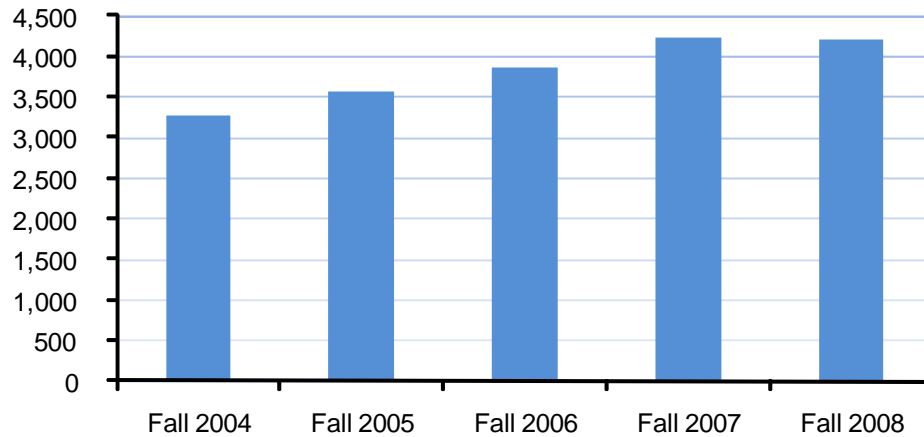
Professional - Law	155	255	410
Professional - Arch	23	45	68
Professional - ANR	26	24	50
Professional - EHS	0	19	19
Total Professional	204	343	547

Total Headcount Enrollment		
	Fall 2007	Fall 2008
Undergraduate	18,053	18,526
Graduate	4,418	4,500
Professional	502	547
Total	22,973	23,573

Last Updated: September 15, 2008



First-Time Freshmen Enrollment Trend



First Time Freshmen by College, 5 Year Trend					
	Fall 2004	Fall 2005	Fall 2006	Fall 2007	Fall 2008
Agriculture & Natural Resources	180	242	244	300	335
Architecture	131	159	144	149	152
Arts & Sciences	765	865	999	933	881
Business Administration	417	512	466	542	563
Education & Human Sciences ^{1\}	306	323	379	399	437
Engineering	455	499	510	536	538
Fine & Performing Arts	109	109	113	122	132
General Studies ^{2\}	734	705	828	1,089	985
Journalism & Mass Communication	169	146	166	165	177
Total	3,266	3,560	3,849	4,235	4,200
Mean Average ACT Score	24.8	24.9	24.9	25.0	25.0

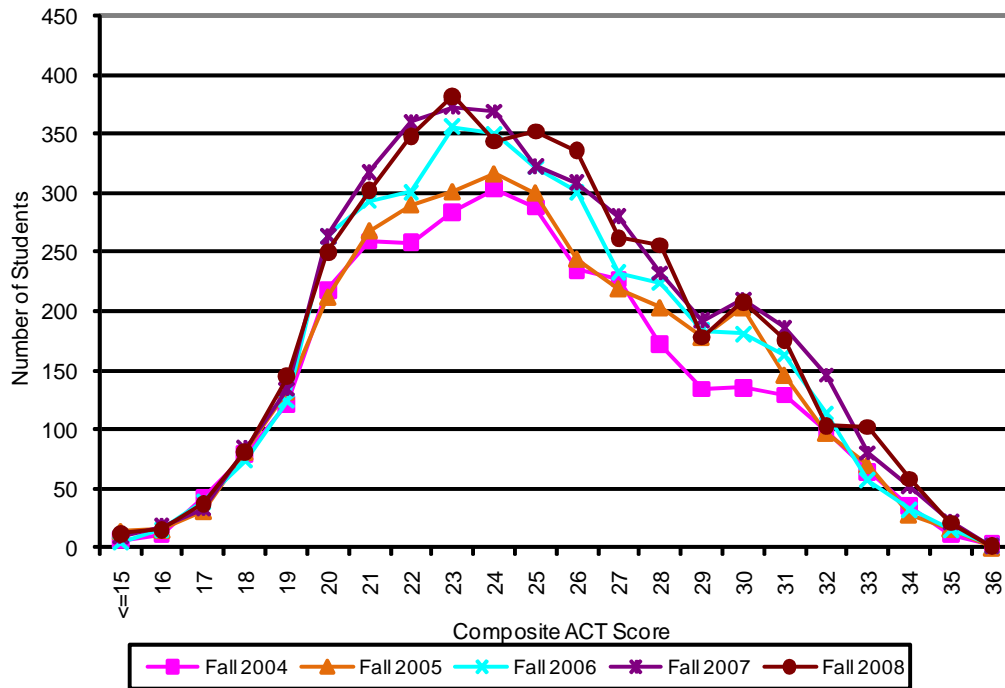
^{1\} In Fall 2003 Human Resources & Sciences and Teachers College combined to form the new College of Education & Human Sciences.

^{2\} General Studies includes Public Affairs

Last Updated: September 11, 2009



First Time Freshmen ACT Scores - 5 Year Trend



Composite Score	Fall 2004	Fall 2005	Fall 2006	Fall 2007	Fall 2008
15 & below	6	14	4	9	12
16	11	15	15	18	15
17	43	31	39	33	37
18	79	81	74	84	81
19	122	132	124	134	145
20	218	212	264	264	250
21	259	268	293	318	302
22	258	290	301	360	348
23	284	301	356	373	382
24	304	316	350	369	344
25	288	300	322	323	352
26	235	244	301	309	336
27	227	219	233	280	262
28	172	203	224	232	256
29	134	178	184	192	178
30	135	203	181	210	208
31	129	146	163	186	176
32	98	97	114	146	103
33	64	70	57	80	102
34	35	28	32	52	58
35	11	16	15	22	21
36	3	0	2	1	1

NOTE: Freshmen are required to submit either ACT or SAT test scores. The majority submit ACT.

Last updated: September 15, 2008



Enrollment by Level, College and Ethnicity, Fall 2008																
College	Black		Native American		Asian		Hispanic		White		Unknown		College Total		Minority Total	
Agricultural Sciences & Natural Resources	15	0	12	0	25	1	24	1	1,473	1	93	19	1,642	22	76	2
Architecture	6	0	2	0	19	0	23	0	447	0	35	9	532	9	50	0
Arts & Sciences	145	3	38	0	178	5	210	0	3,361	1	318	95	4,250	104	571	8
Business Administration	72	0	12	0	83	8	98	1	2,444	0	308	185	3,017	194	265	9
Education & Human Sciences	60	0	25	0	37	0	79	0	2,409	0	117	18	2,727	18	201	0
Engineering	35	1	5	0	62	3	84	0	2,104	2	224	96	2,514	102	186	4
Hixon-Lied	16	0	11	0	18	0	21	0	531	0	50	6	647	6	66	0
Fine & Performing Arts	30	0	4	0	15	2	38	0	732	1	49	11	868	14	87	2
Journalism & Mass Communications	68	2	20	0	65	1	73	0	1,920	1	183	61	2,329	65	226	3
Other	447	6	129	0	502	20	650	2	15,421	6	1,377	500	18,526	534	1,728	28
Undergraduate Total																
Professional (Law, EHS, ANR & Arch)	16	1	6	0	15	2	14	0	442	0	54	0	547	3	51	3
Graduate	129	33	24	0	610	516	141	58	3,148	103	448	159	4,500	869	904	607
Grand Total	592	40	159	0	1,127	538	805	60	19,011	109	1,879	659	23,573	1,406	2,683	638

NOTE: "Other" includes Public Affairs, General Studies, Intercampus and Visitors.

*Red italics indicates number of students in the category who are non-resident aliens.

The University of Nebraska-Lincoln does not discriminate based on gender, age, disability, race, color, religion, marital status, veteran's status, national or ethnic origin, or sexual orientation.

Last Updated: September 16, 2008



Graduate & Professional Enrollment by College and Ethnicity, Fall 2008																
Graduate College	Black		Native American		Asian		Hispanic		White		Unknown		College Total		Minority Total	
Agricultural Sciences & Natural Resources	20	14	0	0	108	97	28	22	286	14	62	32	504	179	156	133
Architecture (Graduate Program Only)	1	0	0	0	1	1	0	0	32	0	2	0	36	1	2	1
Arts & Sciences	29	7	3	0	186	166	41	11	658	29	120	36	1,037	249	259	184
Business Administration	12	4	4	0	81	62	8	4	306	7	29	3	440	80	105	70
Education & Human Sciences	33	2	8	0	51	33	27	3	844	11	55	9	1,018	58	119	38
Engineering	11	4	1	0	142	133	17	14	193	25	93	68	457	244	171	151
Hixon-Lied																
Fine & Performing Arts	4	0	0	0	8	7	4	2	110	5	16	3	142	17	16	9
Journalism & Mass Communications	0	0	2	0	2	1	1	0	59	3	6	0	70	4	5	1
Other (Grad Dean's Office)	19	2	6	0	31	16	15	2	660	9	65	8	796	37	71	20
Graduate Total	129	33	24	0	610	516	141	58	3,148	103	448	159	4,500	869	904	607
ANR Veterinary Medicine	0	0	0	0	0	0	0	0	41	0	9	0	50	0	0	0
Architecture	1	1	1	0	3	1	1	0	60	0	2	0	68	2	6	2
EHS Audiology	0	0	0	0	1	1	0	0	15	0	3	0	19	1	1	1
Law	15	0	5	0	11	0	13	0	326	0	40	0	410	0	44	0
Professional Programs Total	16	1	6	0	15	2	14	0	442	0	54	0	547	3	51	3
Grad & Prof Grand Total	145	34	30	0	625	518	155	58	3,590	103	502	159	5,047	872	955	610

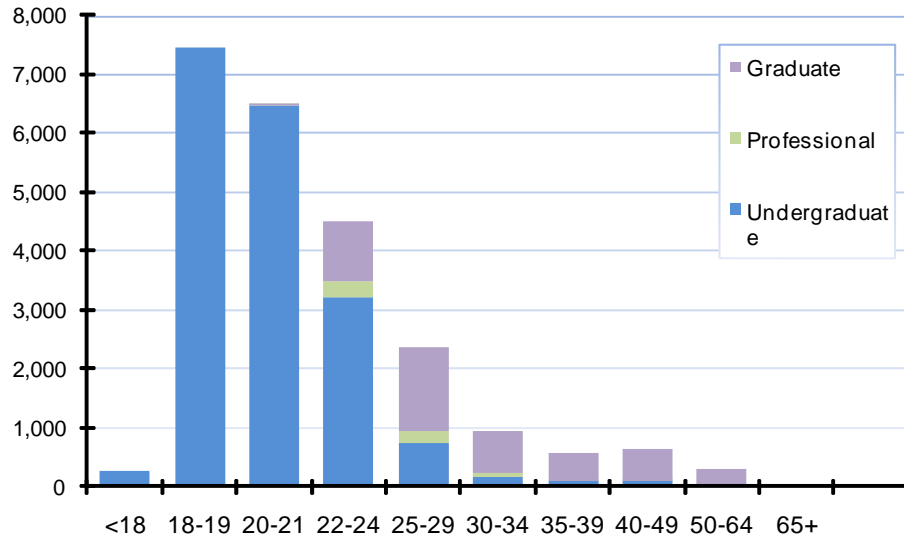
*Red italics indicates number of students in the category who are non-resident aliens.

The University of Nebraska-Lincoln does not discriminate based on gender, age, disability, race, color, religion, marital status, veteran's status, national or ethnic origin, or sexual orientation.

Last Updated: September 16, 2008



**Enrollment by Age
Fall Semester 2008**



Enrollment by Age, Fall Semester 2008					
Age	Undergraduate	Professional	Graduate	Total	Percent
<18	264	0	0	264	1.1%
18-19	7,447	0	0	7,447	31.6%
20-21	6,466	7	34	6,507	27.6%
22-24	3,204	294	1,007	4,505	19.1%
25-29	742	189	1,440	2,371	10.1%
30-34	184	36	731	951	4.0%
35-39	91	10	477	578	2.5%
40-49	97	11	539	647	2.7%
50-64	30	0	266	296	1.3%
65+	1	0	6	7	0.0%
Unknown	0	0	0	0	0.0%
Total	18,526	547	4,500	23,573	100.0%
Average Age	20.60	25.37	31.56		
Ave Age of Full-Time Students	20.24	25.30	27.91		

Last Updated: September 16, 2008



Fall Enrollment by College and Full/Part Time Status										
Five Year Trend										
	2004		2005		2006		2007		2008	
	Full	Part	Full	Part	Full	Part	Full	Part	Full	Part
Ag Sci & Nat Res	1,122	100	1,181	83	1,226	77	1,378	77	1,567	75
Architecture	485	37	498	28	499	35	488	28	503	29
Arts and Sciences	3,834	317	3,892	296	4,057	277	4,027	269	4,022	228
Business Admin	2,643	176	2,638	164	2,631	152	2,725	170	2,851	166
Education & Human Sciences	2,192	160	2,232	145	2,325	139	2,459	136	2,569	158
Engineering	2,155	265	2,203	213	2,238	211	2,297	204	2,302	212
Fine & Performing Arts	598	55	615	44	563	50	575	49	606	41
Gen Studies & Pub Affairs	1,811	173	1,709	156	1,778	140	2,006	129	2,021	125
Journ & Mass Com	832	43	788	32	781	37	792	39	834	34
Other (Intercampus & Visitors)	12	127	12	108	9	146	10	195	8	175
Undergraduate Total	15,684	1,453	15,768	1,269	16,107	1,264	16,757	1,296	17,283	1,243
Graduate Studies	2,015	2,147	2,187	1,963	2,236	2,021	2,207	2,211	2,272	2,228
ANS Veterinary Med ¹	-	-	-	-	-	-	25	0	50	0
Architecture	70	6	73	3	63	2	61	4	65	3
EHS Audiology ²	8	0	15	0	10	4	9	5	11	8
Law	405	4	390	7	393	6	394	4	407	3
Professional Total	483	10	478	10	466	12	489	13	533	14
Total	18,182	3,610	18,433	3,242	18,809	3,297	19,453	3,520	20,088	3,485
Semester Total	21,792		21,675		22,106		22,973		23,573	

FTE - Full Time Equivalent Enrollment					
	2004	2005	2006	2007	2008
Total FTE ³	19,385	19,514	19,908	20,626	21,250

Definition of Full and Part-time Status: Undergraduate and law students enrolled for less than 12 credit hours are considered part-time students; when enrolled for 12 or more credit hours they are full-time students. Graduate students, professional students in Architecture and EHS Audiology enrolled for less than 9 credit hours are part-time and when enrolled for 9 or more credit hours are considered full-time students.

¹ In Fall 2007 Veterinary Medicine (Ag Sci & Nat Res) was created as a professional degree.

² In Fall 2004 Audiology (Education and Human Sciences) was created as a professional degree.

³ Full Time Equivalent is one third of the part time students added to the full time students.

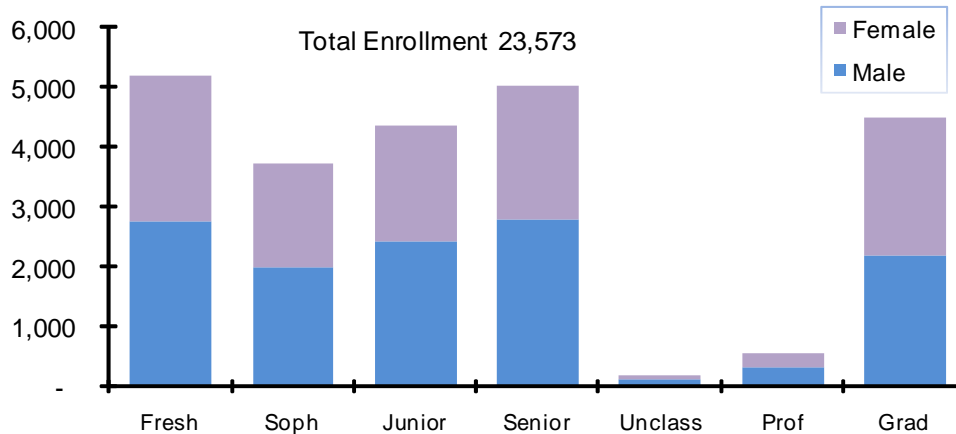
Note: Administrative site enrollments are displayed. (See Factbook Glossary for definition of Administrative Site.)

Last Updated: September 15, 2008



Enrollment by Class Standing & Gender

Fall 2008



Enrollment by Class Standing & Gender Fall 2008					
	Male		Female		Total
	Number	Percent	Number	Percent	
Freshman	2,771	53.27	2,431	46.73	5,202
Sophomore	1,978	52.93	1,759	47.07	3,737
Junior	2,408	55.07	1,965	44.93	4,373
Senior	2,797	55.74	2,221	44.26	5,018
Unclassified	103	52.55	93	47.45	196
Law, EHS, ANR & Arch (Prof)	302	55.21	245	44.79	547
Graduate	2,198	48.84	2,302	51.16	4,500
Total University	12,557	53.27	11,016	46.73	23,573

NOTE: Class standing is determined by the number of student credit hours a student has accumulated (Freshmen: 0-26; Sophomore: 27-52; Junior: 53-88; Senior: 89 and over). Administrative site enrollments are displayed.

Enrollment by Level, Full or Part Time and Gender

Fall 2008	Full Time		Part Time	
	Male	Female	Male	Female
Undergraduate	9,345	7,938	712	531
Professional	298	235	4	10
Graduate	1,175	1,097	1,023	1,205
Total	10,818	9,270	1,739	1,746
				23,573

Last Updated: September 15, 2008



Resident & Non-Resident Student Profile by College - 10 Year Trend



Resident & Non-Resident Student Profile by College - Fall 2008				
College	Resident Students	Non-Resident Students	Total	Percent Non-Resident
Agricultural Sciences & Natural Resources	1,435	207	1,642	12.61%
Architecture	434	98	532	18.42%
Arts & Sciences	3,382	868	4,250	20.42%
Business Administration	2,385	632	3,017	20.95%
Education & Human Sciences	2,350	377	2,727	13.82%
Engineering	2,144	370	2,514	14.72%
Hixson-Lied Fine & Performing Arts	500	147	647	22.72%
General Studies & Public Affairs	1,816	330	2,146	15.38%
Journalism & Mass Communications	677	191	868	22.00%
Other (Includes Visiting & Intercampus)	154	29	183	15.85%
Undergraduate Subtotal	15,277	3,249	18,526	17.54%
Graduate Studies	2,337	2,163	4,500	48.07%
Graduate Total	2,337	2,163	4,500	48.07%
Law	321	89	410	21.71%
Professional Agriculture & Natural Resources	49	1	50	2.00%
Professional Architecture	56	12	68	17.65%
Professional Education & Human Sciences	10	9	19	47.37%
Professional ¹ Subtotal	436	111	547	20.29%
Grand Total	18,050	5,523	23,573	23.43%

¹ Professional includes Law, EHS Audiology, ANR Veterinary Medicine & Professional Architecture students.

Residency is based on regulations developed for tuition purposes. Omaha students paying Metropolitan Advantage Program (MAP) tuition have been included in the non-resident category. MAP students are from Iowa counties contiguous to Omaha.

Last Updated: September 15, 2008



Fall Enrollment by Resident and Non-Resident Status and Level - 10 Year Trend

	Fall 1999			
	Resident		Non-Resident	
	FT	PT	FT	PT
Undergraduate	13,555	1,907	2,159	183
Professional	302	4	77	1
Graduate	797	1,589	1,123	445
Total	14,654	3,500	3,359	629
Total Fall Enrollment				22,142

	Fall 2000			
	Resident		Non-Resident	
	FT	PT	FT	PT
Undergraduate	13,661	1,818	2,298	191
Professional	286	4	84	1
Graduate	775	1,537	1,174	439
Total	14,722	3,359	3,556	631
Total Fall Enrollment				22,268

	Fall 2001			
	Resident		Non-Resident	
	FT	PT	FT	PT
Undergraduate	13,812	1,675	2,297	201
Professional	341	12	115	2
Graduate	785	1,637	1,276	611
Total	14,938	3,324	3,688	814
Total Fall Enrollment				22,764

	Fall 2002			
	Resident		Non-Resident	
	FT	PT	FT	PT
Undergraduate	13,900	1,657	2,387	174
Professional	373	9	106	2
Graduate	791	1,544	1,339	706
Total	15,064	3,210	3,832	882
Total Fall Enrollment				22,988

	Fall 2003			
	Resident		Non-Resident	
	FT	PT	FT	PT
Undergraduate	13,750	1,481	2,469	151
Professional	372	11	105	1
Graduate	787	1,403	1,327	702
Total	14,909	2,895	3,901	854
Total Fall Enrollment				22,559

	Fall 2004			
	Resident		Non-Resident	
	FT	PT	FT	PT
Undergraduate	13,267	1,316	2,417	137
Professional	396	8	87	2
Graduate	762	1,377	1,253	770
Total	14,425	2,701	3,757	909
Total Fall Enrollment				21,792

	Fall 2005			
	Resident		Non-Resident	
	FT	PT	FT	PT
Undergraduate	13,227	1,156	2,541	113
Professional	400	7	78	3
Graduate	832	1,319	1,355	644
Total	14,459	2,482	3,974	760
Total Fall Enrollment				21,675

	Fall 2006			
	Resident		Non-Resident	
	FT	PT	FT	PT
Undergraduate	13,399	1,145	2,708	119
Professional	381	12	85	0
Graduate	870	1,362	1,366	659
Total	14,650	2,519	4,159	778
Total Fall Enrollment				22,106

	Fall 2007			
	Resident		Non-Resident	
	FT	PT	FT	PT
Undergraduate	13,842	1,181	2,915	115
Professional	413	11	76	2
Graduate	862	1,514	1,345	697
Total	15,117	2,706	4,336	814
Total Fall Enrollment				22,973

	Fall 2008			
	Resident		Non-Resident	
	FT	PT	FT	PT
Undergraduate	14,175	1,102	3,108	141
Professional	426	10	107	4
Graduate	854	1,483	1,418	745
Total	15,455	2,595	4,633	890
Total Fall Enrollment				23,573

Law, Architecture, Audiology (after 2004), Veterinary Med (after 2007) students are included in Professional.
Last Updated: September 17, 2008

Institutional Research & Planning



Enrollment by Housing Type - 5 Year Trend

	Fall 2004	Fall 2005	Fall 2006	Fall 2007	Fall 2008
City Campus					
Resident Halls	4,530	4,937	5,318	5,569	5,664
University Student Family Housing ¹	280	280	280	280	280
Fraternities & Sororities ¹	2,084	2,084	2,084	1,490 ²	1,402
Total City Campus	6,894	7,301	7,682	7,339	7,346
East Campus					
Resident Halls	207	180	223	212	250
University Student Family Housing ¹	247	247	247	247	247
Fraternities & Sororities ¹	179	179	179	226	216
Total East Campus	633	606	649	685	713
Total UNL Resident Halls	4,737	5,117	5,541	5,781	5,914
Total UNL Student Family Housing ¹	527	527	527	527	527
Total Fraternities & Sororities ¹	2,263	2,263	2,263	1,716	1,618
Total UNL Campus & Greek Houses	7,527	7,907	8,331	8,024	8,059
% Students Living on Campus	34.5%	36.5%	37.7%	34.9%	34.2%
UNL Owned Housing Capacity	6,332	6,817	6,817	6,817	6,827
University Fall Enrollment	21,792	21,675	22,106	22,973	23,573

¹ Usually at capacity

² In 2007, there was one less on-campus Greek house

Source: University Housing and Greek Affairs

Last Updated: September 29, 2008



**Origin of University of Nebraska-Lincoln Students
by Country of Origin and Student Level, Fall 2008**

	Undergrad	Grad & Prof	Total		Undergrad	Grad & Prof	Total
Afghanistan	1	0	1	Egypt	0	7	7
Albania	2	2	4	El Salvador	0	0	0
Algeria	1	0	1	Ethiopia	2	9	11
Argentina	0	9	9	Finland	1	2	3
Armenia	2	1	3	France	4	6	10
Australia	3	1	4	Gabon	2	0	2
Austria	0	1	1	Georgia, Republic of	0	0	0
Azerbaijan	1	1	2	Germany	20	21	41
Bahamas	0	1	1	Ghana	2	7	9
Bangladesh	1	4	5	Greece	0	1	1
Belarus	0	2	2	Guatemala	1	0	1
Belize	0	1	1	Haiti	1	1	2
Benin	3	0	3	Honduras	1	2	3
Bolivia	0	2	2	Hong Kong	7	2	9
Bosnia-Herzegovina	0	2	2	Hungary	0	0	0
Botswana	0	2	2	India	19	140	159
Brazil	18	38	56	Indonesia	7	3	10
Bulgaria	2	3	5	Iran	2	11	13
Burkina Faso	2	0	2	Iraq	1	2	3
Burma (Myanmar)	1	0	1	Ireland	0	1	1
Cambodia	1	0	1	Israel	1	0	1
Cameroon	0	1	1	Italy	1	5	6
Canada	22	23	45	Jamaica	1	3	4
Chile	0	5	5	Japan	47	19	66
China	100	288	388	Jordan	2	9	11
Colombia	3	13	16	Kazakhstan	1	0	1
Congo, Republic of	0	5	5	Kenya	2	2	4
Costa Rica	0	0	0	Kyrgyzstan	0	0	0
Cote D'Ivoire	1	0	1	Kuwait	0	2	2
Croatia	1	0	1	Latvia	2	0	2
Czech Republic	4	1	5	Lebanon	0	5	5
Dominican Republic	1	0	1	Libya	0	0	0
Ecuador	1	3	4	Lithuania	2	0	2

Note: Administrative site enrollments are displayed.

Continued Next Page

Last Updated: September 18, 2008



**Origin of University of Nebraska-Lincoln Students
by Country of Origin and Student Level, Fall 2008 continued**

	Undergrad	Grad & Prof	Total			Undergrad	Grad & Prof	Total
Macao	2	0	2		Sierra Leone	0	1	1
Macedonia	0	1	1		Singapore	1	5	6
Malawi	1	0	1		Slovakia	1	0	1
Malaysia	96	18	114		South Africa	3	1	4
Malta	2	0	2		South Korea	43	54	97
Mauritius	0	1	1		Spain	0	9	9
Mexico	5	24	29		Sri Lanka	1	7	8
Moldova	1	1	2		Sudan	1	1	2
Morocco	0	2	2		Sweden	3	3	6
Nepal	15	13	28		Syrian Arab Republic	0	4	4
Netherlands	1	2	3		Taiwan	5	25	30
Nicaragua	1	1	2		Tajikistan	5	2	7
Niger	0	1	1		Tanzania	1	2	3
Nigeria	5	6	11		Thailand	2	20	22
Norway	0	0	0		Togo	8	5	13
Pakistan	2	4	6		Trinidad & Tobago	0	2	2
Panama	3	3	6		Tunisia	1	1	2
Paraguay	0	0	0		Turkey	1	17	18
Peru	2	4	6		Uganda	0	3	3
Philippines	0	4	4		Ukraine	0	8	8
Poland	0	9	9		United Kingdom	8	5	13
Portugal	1	1	2		United States	17,936	4,035	21,971
Puerto Rico	1	3	4		Uruguay	0	1	1
Romania	2	0	2		Venezuela	3	4	7
Russia	4	15	19		Vietnam	7	10	17
Rwanda	1	1	2		West Bank	0	2	2
St Kitts & Nevis	0	0	0		Yemen	0	2	2
Saudi Arabia	40	5	45		Zambia	0	3	3
Senegal	1	0	1		Zimbabwe	2	2	4
Serbia	0	1	1		Unspecified	7	21	28
Serbia - Montenegro	1	3	4					
					Total	18,526	5,047	23,573

Note: Administrative site enrollments are displayed.

Last Updated: September 18, 2008



**University of Nebraska-Lincoln
Undergraduate Students by State of Origin, Fall 2008**

	Undergraduate			Undergraduate
Alabama	6		Nevada	21
Alaska	9		New Hampshire	5
Arizona	36		New Jersey	23
Arkansas	8		New Mexico	10
California	146		New York	20
Colorado	193		North Carolina	12
Connecticut	5		North Dakota	59
Delaware	3		Ohio	20
Dist Of Columbia	4		Oklahoma	23
Florida	25		Oregon	20
Georgia	27		Pennsylvania	31
Hawaii	8		Rhode Island	6
Idaho	9		South Carolina	6
Illinois	233		South Dakota	439
Indiana	14		Tennessee	10
Iowa	355		Texas	254
Kansas	297		Utah	10
Kentucky	5		Vermont	4
Louisiana	5		Virginia	40
Maine	2		Washington	23
Maryland	20		West Virginia	0
Massachusetts	11		Wisconsin	54
Michigan	29		Wyoming	30
Minnesota	232		Unknown State & Military	83
Mississippi	5		US Total	17,936
Missouri	208		Foreign Students	583
Montana	17		Unknown	7
Nebraska	14,821		Total Enrollment	18,526

Note: Administrative site enrollments are displayed.

Last Updated: September 18, 2008



**University of Nebraska-Lincoln Undergraduate Students
by Nebraska County, Fall 2008**

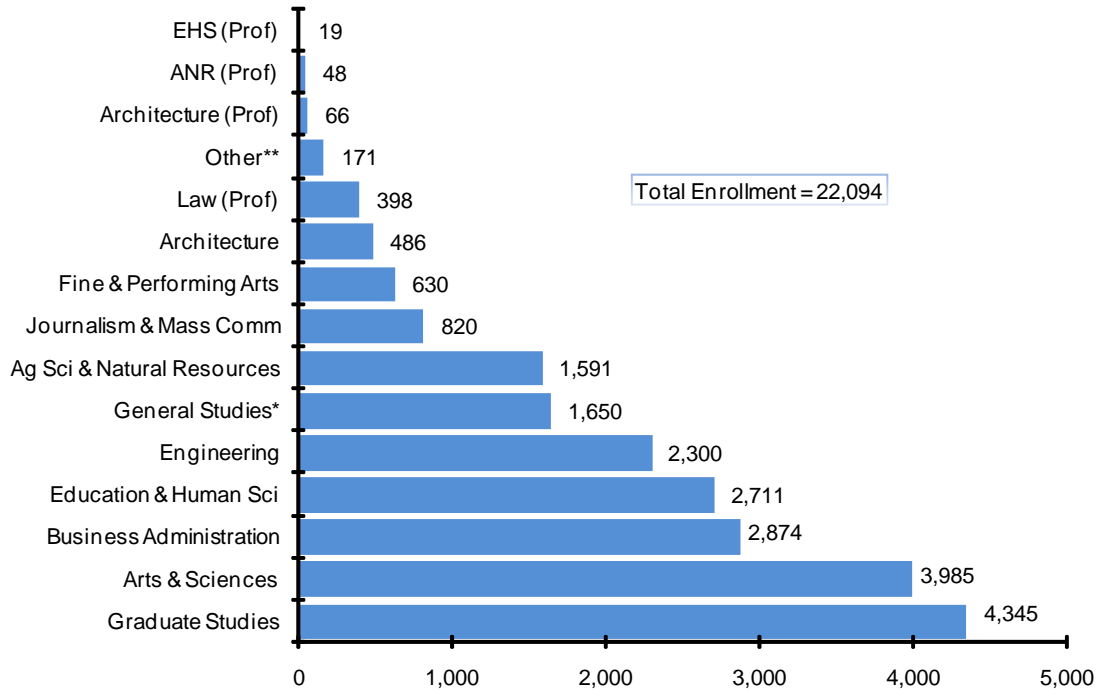
	Under-graduate			Under-graduate			Under-graduate
Adams	205		Gage	181		Pawnee	24
Antelope	66		Garden	7		Perkins	24
Arthur	0		Garfield	21		Phelps	96
Banner	5		Gosper	12		Pierce	62
Blaine	7		Grant	3		Platte	242
Boone	71		Greeley	26		Polk	52
Box Butte	90		Hall	384		Red Willow	48
Boyd	10		Hamilton	92		Richardson	71
Brown	16		Harlan	16		Rock	5
Buffalo	292		Hayes	9		Saline	142
Burt	71		Hitchcock	12		Sarpy	1,127
Butler	105		Holt	89		Saunders	211
Cass	152		Hooker	3		Scotts Bluff	134
Cedar	128		Howard	45		Seward	155
Chase	36		Jefferson	51		Sheridan	18
Cherry	32		Johnson	49		Sherman	16
Cheyenne	87		Kearney	61		Sioux	0
Clay	44		Keith	66		Stanton	21
Colfax	165		Keya Paha	4		Thayer	56
Cuming	103		Kimball	22		Thomas	3
Custer	89		Knox	76		Thurston	27
Dakota	106		Lancaster	3,850		Valley	53
Dawes	16		Lincoln	205		Washington	183
Dawson	140		Logan	3		Wayne	52
Deuel	17		Loup	2		Webster	28
Dixon	39		Madison	277		Wheeler	6
Dodge	279		McPherson	24		York	149
Douglas	3,240		Merrick	60		Unknown County	117
Dundy	9		Morrill	21		NE Total	14,821
Fillmore	61		Nance	32		Other US	3,115
Franklin	18		Nemaha	60		Foreign Students	583
Frontier	30		Nuckolls	35		Unknown	7
Furnas	48		Otoe	124		Total Enrollment	18,526

Note: Administrative site enrollments are displayed.

Last Updated: September 18, 2008



Enrollment by College Spring 2009



Enrollment by College, Spring 2009			
College	Number of Students	College	Number of Students
Ag Sci & Natural Resources	1,591	Engineering	2,300
ANR (Prof)	48	Fine & Performing Arts	630
Architecture	486	General Studies*	1,650
Architecture (Prof)	66	Graduate Studies	4,345
Arts & Sciences	3,985	Journalism & Mass Comm	820
Business Administration	2,874	Law (Prof)	398
Education & Human Sci	2,711	Other**	171
EHS (Prof)	19	Total	22,094

*General Studies includes College of Public Administration

**Other includes Intercampus and Visitors.

Last Updated: January 27, 2009



**Enrollment by College & Student Level
Spring Semester 2009**

Undergraduate Headcount Enrollment								
	1st Time Freshmen	Other Freshmen	Sophomore	Junior	Senior	Unclassified	Total	New Transfers
Ag Sci & Nat Resources	6	266	310	442	566	1	1,591	33
Architecture	0	120	88	108	169	1	486	3
Arts & Sciences	10	661	751	1,126	1,437	0	3,985	91
Business Admin	17	551	579	806	921	0	2,874	63
Education & Human Sci	4	455	528	748	975	1	2,711	59
Engineering	3	427	439	563	845	23	2,300	40
Fine & Performing Arts	0	121	125	157	227	0	630	11
Journalism & Mass Communications	1	160	157	279	223	0	820	8
General Studies (includes Public Affairs)	21	809	492	239	89	0	1,650	55
Other (Includes Intercampus & Visitors)	0	18	2	2	0	149	171	0
Total	62	3,588	3,471	4,470	5,452	175	17,218	363

* "New Transfers" are a subset of total enrollment.

Graduate and Professional Headcount Enrollment			
	1st Time	Not 1st Time	Total
Graduate	215	3,477	3,692
Graduate - Non-Degree	188	465	653
Total Graduate	403	3,942	4,345

Professional - Law	1	397	398
Professional - Arch	0	66	66
Professional - ANR	0	48	48
Professional - EHS	0	19	19
Total Professional	1	530	531

Total Headcount Enrollment		
	Spring 2008	Spring 2009
Undergraduate	16,721	17,218
Graduate	4,390	4,345
Professional	485	531
Total	21,596	22,094

Last Updated: January 27, 2009



Enrollment by Level, College and Ethnicity, Spring 2009																
College	Black		Native American		Asian		Hispanic		White		Unknown		College Total		Minority Total	
Agricultural Sciences & Natural Resources	12	0	10	0	31	2	23	1	1,426	0	89	16	1,591	19	76	3
Architecture	6	0	2	0	15	0	23	0	402	0	38	12	486	12	46	0
Arts & Sciences	140	2	33	0	162	5	200	1	3,153	1	297	85	3,985	94	535	8
Business Administration	49	0	14	0	86	8	98	1	2,306	1	321	199	2,874	209	247	9
Education & Human Sciences	62	0	17	0	43	0	80	0	2,389	0	120	16	2,711	16	202	0
Engineering	35	1	5	0	62	3	70	0	1,929	2	199	81	2,300	87	172	4
Hixon-Lied	18	0	10	0	20	0	20	0	515	1	47	5	630	6	68	0
Fine & Performing Arts	31	0	3	0	12	0	39	0	689	1	46	10	820	11	85	0
Journalism & Mass Communications	66	2	11	0	44	1	66	0	1,490	0	144	48	1,821	51	187	3
Undergraduate Total	419	5	105	0	475	19	619	3	14,299	6	1,301	472	17,218	505	1,618	27
Professional (Law, EHS, ANR & Arch)	17	1	5	0	15	2	11	0	428	0	55	0	531	3	48	3
Graduate	132	32	21	0	598	506	159	66	3,007	103	428	145	4,345	852	910	604
Grand Total	568	32	131	0	1,088	527	789	69	17,734	109	1,784	617	22,094	1,354	2,576	634

NOTE: "Other" includes Public Affairs, General Studies, Intercampus and Visitors.

*Red italics indicates number of students in the category who are non-resident aliens.

The University of Nebraska-Lincoln does not discriminate based on gender, age, disability, race, color, religion, marital status, veteran's status, national or ethnic origin, or sexual orientation.

Last Updated: February 15, 2009



Graduate & Professional Enrollment by College and Ethnicity, Spring 2009																
Graduate College	Black		Native American		Asian		Hispanic		White		Unknown		College Total		Minority Total	
Agricultural Sciences & Natural Resources	19	12	1	0	114	102	35	28	284	12	65	30	518	184	169	142
Architecture (Graduate Program Only)	1	0	0	0	0	0	0	0	37	1	4	0	42	1	1	0
Arts & Sciences	28	8	4	0	178	159	40	10	622	30	104	30	976	237	250	177
Business Administration	14	5	3	0	77	59	7	3	265	6	28	3	394	76	101	67
Education & Human Sciences	33	2	7	0	52	32	32	4	862	10	64	8	1,050	56	124	38
Engineering Hixon-Lied	11	5	0	0	140	131	20	17	209	32	89	65	469	250	171	153
Fine & Performing Arts	3	0	0	0	8	7	4	2	110	4	14	3	139	16	15	9
Journalism & Mass Communications	0	0	1	0	2	2	1	0	53	3	1	0	58	5	4	2
Other (Grad Dean's Office)	23	0	5	0	27	14	20	2	565	5	59	6	699	27	75	16
Graduate Total	132	32	21	0	598	506	159	66	3,007	103	428	145	4,345	852	910	604
ANR Veterinary Medicine	0	0	0	0	0	0	0	0	39	0	9	0	48	0	0	0
Architecture	2	1	1	0	3	1	1	0	57	0	2	0	66	2	7	2
EHS Audiology	0	0	0	0	1	1	0	0	15	0	3	0	19	1	1	1
Law	15	0	4	0	11	0	10	0	317	0	41	0	398	0	40	0
Professional Programs Total	17	1	5	0	15	2	11	0	428	0	55	0	531	3	48	3
Grad & Prof Grand Total	149	33	26	0	613	508	170	66	3,435	103	483	145	4,876	855	958	607

*Red italics indicates number of students in the category who are non-resident aliens.

The University of Nebraska-Lincoln does not discriminate based on gender, age, disability, race, color, religion, marital status, veteran's status, national or ethnic origin, or sexual orientation.

Last Updated: February 15, 2009



Spring Enrollment by Resident and Non-Resident Status and Level - 10 Year Trend

	Spring 2000			
	Resident		Non-Resident	
	FT	PT	FT	PT
Undergraduate	12,316	1,877	1,946	202
Professional	284	9	72	2
Graduate	701	1,607	1,016	471
Total	13,301	3,493	3,034	675
Total Spring Enrollment				20,503

	Spring 2001			
	Resident		Non-Resident	
	FT	PT	FT	PT
Undergraduate	12,353	1,857	2,119	212
Professional	310	11	93	3
Graduate	689	1,639	1,092	560
Total	13,352	3,507	3,304	775
Total Spring Enrollment				20,938

	Spring 2002			
	Resident		Non-Resident	
	FT	PT	FT	PT
Undergraduate	12,487	1,790	2,103	195
Professional	322	16	106	7
Graduate	732	1,615	1,227	689
Total	13,541	3,421	3,436	891
Total Spring Enrollment				21,289

	Spring 2003			
	Resident		Non-Resident	
	FT	PT	FT	PT
Undergraduate	12,615	1,726	2,231	182
Professional	353	18	96	6
Graduate	727	1,507	1,310	678
Total	13,695	3,251	3,637	866
Total Spring Enrollment				21,449

	Spring 2004			
	Resident		Non-Resident	
	FT	PT	FT	PT
Undergraduate	12,485	1,483	2,198	139
Professional	367	16	89	6
Graduate	718	1,411	1,207	739
Total	13,570	2,910	3,494	884
Total Spring Enrollment				20,858

	Spring 2005			
	Resident		Non-Resident	
	FT	PT	FT	PT
Undergraduate	12,061	1,348	2,204	129
Professional	378	18	77	4
Graduate	739	1,400	1,196	732
Total	13,178	2,766	3,477	865
Total Spring Enrollment				20,286

	Spring 2006			
	Resident		Non-Resident	
	FT	PT	FT	PT
Undergraduate	12,017	1,267	2,303	116
Professional	381	14	72	4
Graduate	791	1,332	1,322	654
Total	13,189	2,613	3,697	774
Total Spring Enrollment				20,273

	Spring 2007			
	Resident		Non-Resident	
	FT	PT	FT	PT
Undergraduate	12,206	1,257	2,503	106
Professional	357	26	74	1
Graduate	842	1,398	1,353	698
Total	13,405	2,681	3,930	805
Total Spring Enrollment				20,821

	Spring 2008			
	Resident		Non-Resident	
	FT	PT	FT	PT
Undergraduate	12,661	1,251	2,677	132
Professional	390	19	71	5
Graduate	833	1,491	1,305	761
Total	13,884	2,761	4,053	898
Total Spring Enrollment				21,596

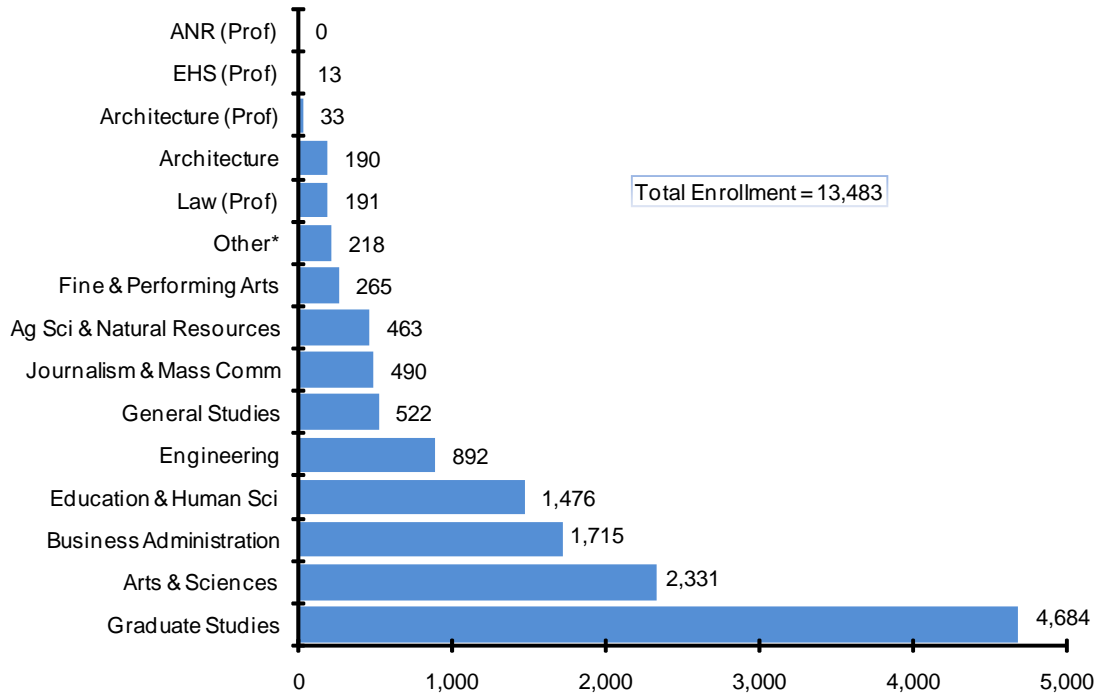
	Spring 2009			
	Resident		Non-Resident	
	FT	PT	FT	PT
Undergraduate	13,020	1,195	2,865	138
Professional	418	13	98	2
Graduate	783	1,473	1,280	809
Total	14,221	2,681	4,243	949
Total Spring Enrollment				22,094

Law, Architecture, Audiology (after 2004) and Veterinary Medicine (after 2007) students are included in Professional.

Last Updated: January 27, 2009



Enrollment by College Summer 2009



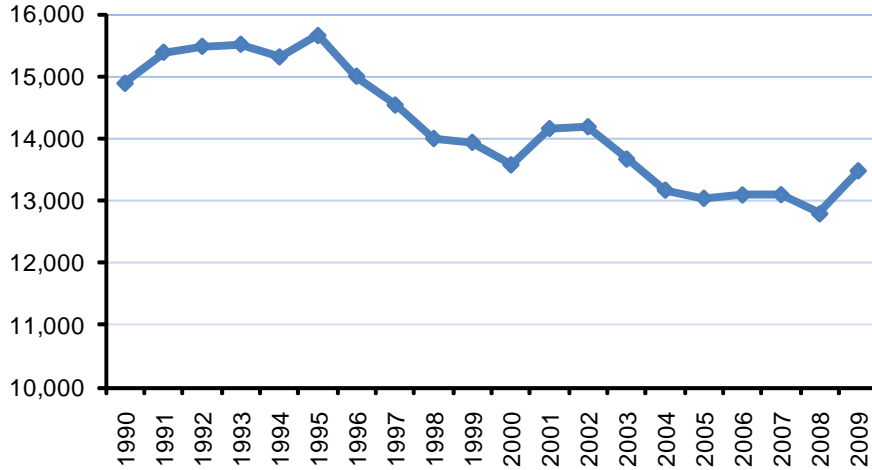
Enrollment by College, Summer 2009			
College	Number of Students	College	Number of Students
Ag Sci & Natural Resources	463	Engineering	892
ANR (Prof)	0	Fine & Performing Arts	265
Architecture	190	General Studies	522
Architecture (Prof)	33	Graduate Studies	4,684
Arts & Sciences	2,331	Journalism & Mass Comm	490
Business Administration	1,715	Law (Prof)	191
Education & Human Sci	1,476	Other*	218
EHS (Prof)	13	Total	13,483

*Other includes Intercampus and Visitors.

Last Updated: August 5, 2009



Summer Enrollment for All Sessions - 20 Year Trend



Summer Enrollment for All Sessions										
Student Level	1990	1991	1992	1993	1994	1995	1996	1997	1998	1999
Undergraduate	10,635	10,899	10,981	10,744	10,460	10,368	9,936	10,039	9,803	9,658
Professional	191	242	245	238	249	241	193	224	268	261
Graduate	4,063	4,247	4,256	4,534	4,605	5,048	4,875	4,278	3,931	4,021
TOTAL	14,889	15,388	15,482	15,516	15,314	15,657	15,004	14,541	14,002	13,940

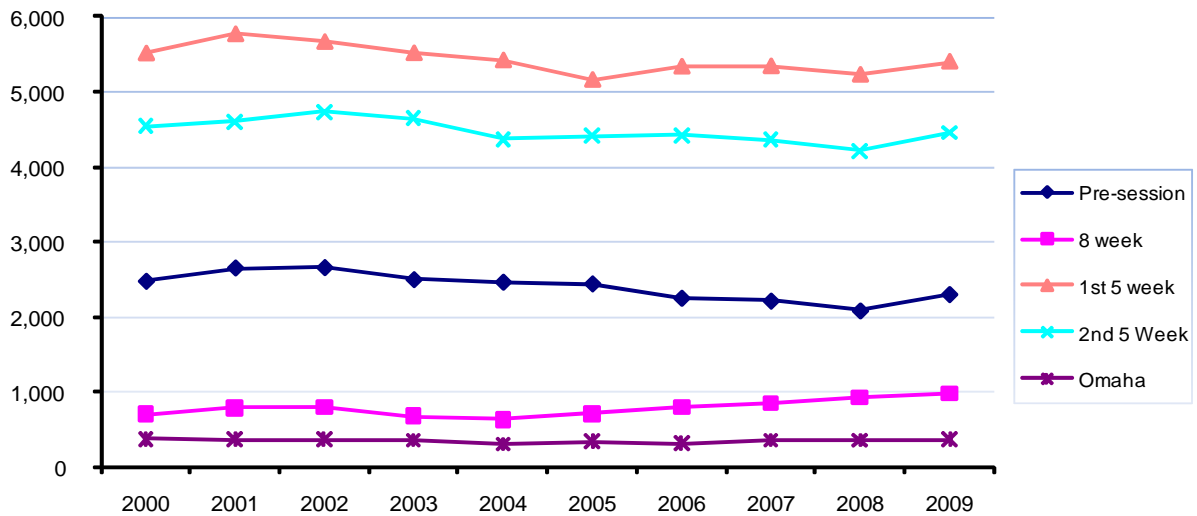
Student Level	2000	2001	2002	2003	2004	2005	2006	2007	2008	2009
Undergraduate	9,274	9,478	9,399	9,095	8,725	8,606	8,461	8,378	8,211	8,562
Professional	223	265	214	206	255	244	213	192	215	237
Graduate	4,083	4,419	4,578	4,371	4,193	4,192	4,423	4,531	4,366	4,684
TOTAL	13,580	14,162	14,191	13,672	13,173	13,042	13,097	13,101	12,792	13,483

Notes: "All Sessions" includes a Three-week Pre-session, an Eight-week Session, a First Five-week Session and a Second Five-week Session. Also included is the number of students enrolled in classes delivered in Omaha (for all sessions) but administered from Lincoln. The foregoing are combined for a "Total Summer Enrollment" with no accounting for duplication in headcount. (Students enrolled in more than one session are counted more than once.)

Last Updated: July 31, 2009



Summer Enrollment by Session - 10 Year Trend



Summer Enrollment by Session										
	2000	2001	2002	2003	2004	2005	2006	2007	2008	2009
Pre-Session	2,473	2,649	2,654	2,495	2,461	2,439	2,249	2,211	2,081	2,298
8 Week	694	784	789	670	625	703	794	844	925	975
1st 5 Week	5,511	5,770	5,665	5,513	5,416	5,152	5,330	5,336	5,221	5,398
2nd 5 Week	4,537	4,601	4,728	4,647	4,369	4,413	4,417	4,357	4,215	4,452
Students in Omaha	365	358	355	347	302	335	307	353	350	360
Total	13,580	14,162	14,191	13,672	13,173	13,042	13,097	13,101	12,792	13,483

Note: The number of students for each summer session term is combined for a "Total Summer Enrollment" with no accounting for duplication in headcount.

Last Updated: July 31, 2009



General Regular Faculty by Tenure Status & College - Fall 2008				
College / Unit	Tenured	Tenure Track	Special Appt	Total
Architecture	15	10	14	39
Arts & Sciences	263	87	137	487
Business Administration	46	11	28	85
Education & Human Sciences	91	23	99	213
Engineering	101	25	22	148
Hixson-Lied Fine & Performing Arts	52	14	29	95
Institute of Agriculture & Natural Resources	212	43	28	283
Journalism & Mass Communications	7	10	47	64
Law	22	7	19	48
Libraries	32	7	2	41
University of Nebraska State Museum	1	0	0	1
Other: Raikes School of Comp. Sci. and Mgmt, University Honors Program, Center for Plant Science Innovation, International Affairs, Lied Center for Performing Arts, Extended Education & Outreach, Graduate Studies, and Academic Affairs	2	0	11	13
Total	844	237	436	1,517

NOTE: Faculty includes both full-time and part-time faculty and chairpersons employed by the University of Nebraska-Lincoln as of the fall census date (does not include Nebraska College of Technical Agriculture faculty). "Other faculty," "Equivalent Rank faculty," and "Research / Clinical faculty" are excluded. "Special Appointment" faculty are neither tenured nor on a tenure-track.

Last Updated: February 5, 2009



General Regular Faculty Trend by Rank					
	2004	2005	2006	2007	2008
Professor	522	531	529	538	547
Associate Professor	354	338	338	333	331
Assistant Professor	197	216	211	228	260
Instructor	0	2	3	1	0
Senior Lecturer	46	48	45	42	23
Lecturer	312	317	351	379	340
Visiting Faculty	21	30	20	18	16
Other	0	0	0	0	0
Total	1,452	1,482	1,497	1,539	1,517

NOTE: Faculty includes both full-time and part-time faculty and chairpersons employed by the University of Nebraska - Lincoln as of the fall census date (does not include Nebraska College of Technical Agriculture faculty). "Other faculty," "Equivalent Rank Faculty," and "Research / Clinical Faculty" are excluded.

Last Updated: February 5, 2009



General Regular Faculty by Rank & College - Fall 2008								
	Professor	Associate Prof	Assistant Prof	Instructor	Sr Lecturer	Lecturer	Visiting Faculty	Total
Architecture	9	9	9	0	0	10	2	39
Arts & Sciences	177	99	96	0	5	107	3	487
Business Administration	26	21	14	0	0	23	1	85
Education & Human Sciences	55	36	34	0	7	81	0	213
Engineering	53	47	26	0	3	17	2	148
Hixson-Lied Fine & Performing Arts	20	32	16	0	4	23	0	95
Institute of Agriculture & Natural Resources	161	61	46	0	1	10	4	283
Journalism & Mass Comm	6	8	4	0	3	43	0	64
Law	22	1	7	0	0	16	2	48
Libraries	15	17	8	0	0	1	0	41
University of Nebraska State Museum	1	0	0	0	0	0	0	1
Other ¹	2	0	0	0	0	9	2	13
Total	547	331	260	0	23	340	16	1,517

NOTE: Faculty includes both full-time and part-time faculty and chairpersons employed by the University of Nebraska - Lincoln as of the fall census date (does not include Nebraska College of Technical Agriculture faculty). "Other faculty," "Equivalent Rank Faculty," and "Research / Clinical Faculty" are excluded. "Special Appointment" faculty are neither tenured nor on a tenure-track.

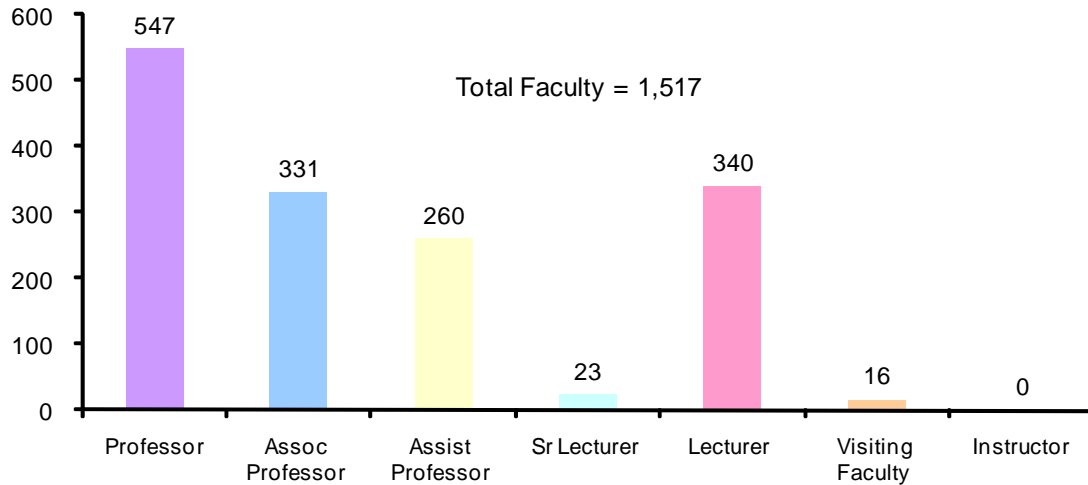
¹ Other includes Raikes School of Comp. Sci. and Mgmt, University Honors Program, Center for Plant Science Innovation, International Affairs, Lied Center for Performing Arts, Extended Education & Outreach, Graduate Studies, and Academic Affairs.

The University of Nebraska - Lincoln does not discriminate based on gender, age, disability, race, color, religion, marital status, veteran's status, national or ethnic origin, or sexual orientation.

Last Updated: February 4, 2009



General Regular Faculty by Rank and Gender - Fall 2008



General Regular Faculty by Rank, Gender and Ethnic Composition																		
	Professor		Associate Prof		Assistant Prof		Sr Lecturer		Lecturer		Instructor		Visiting Faculty		Total		Total	Percent
	M	F	M	F	M	F	M	F	M	F	M	F	M	F	M	F		
Asian or Pacific Islander	35	2	20	13	31	17	0	1	3	6	0	0	2	2	91	41	132	8.70%
Black - Non Hispanic	2	1	4	8	3	5	0	0	1	2	0	0	0	0	10	16	26	1.71%
Hispanic	9	1	12	3	8	5	0	0	3	11	0	0	1	0	33	20	53	3.49%
Native American / Alaskan	1	0	0	4	1	1	0	0	0	1	0	0	0	0	2	6	8	0.53%
Subtotal	47	4	36	28	43	28	0	1	7	20	0	0	3	2	136	83	219	14.44%
White - Non Hispanic & Unknown	397	99	169	98	117	72	13	9	158	155	0	0	10	1	864	434	1,298	85.56%
Total	444	103	205	126	160	100	13	10	165	175	0	0	13	3	1,000	517	1,517	100%

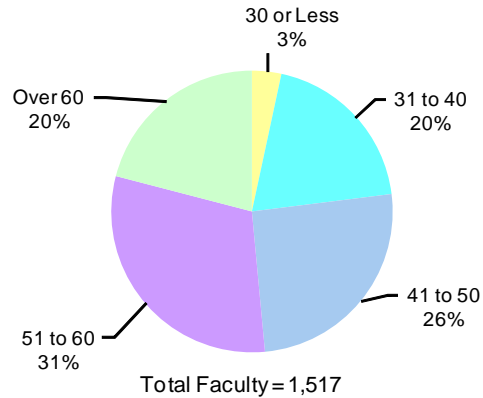
Note: Faculty includes both full-time and part-time faculty and chairpersons employed by the University of Nebraska - Lincoln as of the fall census date (does not include Nebraska College of Technical Agriculture faculty). "Other Faculty," "Equivalent Rank Faculty," and Research / Clinical Faculty" are excluded.

The University of Nebraska - Lincoln does not discriminate based on gender, age, disability, race, color, religion, marital status, veteran's status, national or ethnic origin, or sexual orientation.

Last Updated: February 4, 2009



**General Regular Faculty
by Age - Fall 2008**



Faculty by Age				
Age	Male	Female	Total	Percent
25 or Less	2	1	3	0%
26-30	19	29	48	3%
31-35	79	55	134	9%
36-40	96	68	164	11%
41-45	115	66	181	12%
46-50	130	76	206	13%
51-55	152	73	225	15%
56-60	152	86	238	16%
61-65	133	50	183	12%
66-70	90	12	102	7%
Over 70	32	1	33	2%
Total	1,000	517	1,517	100%

Note: Faculty includes both full-time and part-time faculty and chairpersons employed by the University of Nebraska - Lincoln as of the fall census date (does not include Nebraska College of Technical Agriculture faculty). "Other Faculty," "Equivalent Rank Faculty," and Research / Clinical Faculty" are excluded.

The University of Nebraska - Lincoln does not discriminate based on gender, age, disability, race, color, religion, marital status, veteran's status, national or ethnic origin, or sexual orientation.

Last Updated: February 4, 2009



**Full-Time Faculty* by Tenure Status, Ethnicity and Gender
Fall 2008**

	Tenured		Total Tenured	Tenure Track		Total Tenure Track	Grand Total
	Male	Female		Male	Female		
Asian or Pacific Islander	52	15	67	31	17	48	115
Black, Non-Hispanic	6	8	14	3	5	8	22
Hispanic	20	4	24	7	4	11	35
Native American /Alaskan	1	4	5	1	1	2	7
White, Non-Hispanic	535	188	723	108	60	168	891
Total	614	219	833	150	87	237	1,070

* Does not include Special Appointment Faculty.

Last Updated: October 1, 2009



UNL Staffing - 10 Year Trend											
	1999	2000	2001	2002	2003	2004	2005	2006	2007	2008	
Administrators	141	149	157	147	142	151	161	162	166	163	
Tenured Faculty	876	859	838	840	813	833	831	841	849	844	
Tenure-Track Faculty	223	232	242	231	209	210	226	219	233	237	
Special Appointment	388	435	433	389	424	409	425	437	457	436	
Total General Regular Faculty	1,487	1,526	1,513	1,460	1,446	1,452	1,482	1,497	1,539	1,517	
Research/Clinical Faculty	70	80	75	86	100	103	116	116	100	97	
Equivalent Rank Faculty	180	171	184	177	174	179	190	194	181	186	
Other Faculty	162	183	204	182	179	179	190	163	162	188	
Health Faculty ^{1/}		20	22	19	20	16	17	16	14	16	
Total Other Faculty	412	454	485	464	473	477	513	489	457	487	
Athletics Administrators ^{2/}		27	29	29	27	29	29	27	30	29	
Managerial / Professional (Regular)	1,519	1,522	1,532	1,580	1,563	1,603	1,623	1,672	1,721	1,766	
Office / Service (Regular)	2,113	2,082	2,138	2,068	1,943	1,892	1,889	1,881	1,885	1,885	
Graduate Teaching Assistants	676	658	678	712	704	680	688	720	714	757	
Graduate Research Assistants	830	858	973	953	911	922	1,003	1,015	1,016	1,001	
Other Graduate Assistants	140	94	112	85	103	136	115	126	121	149	
Total Graduate Assistants	1,646	1,610	1,763	1,750	1,718	1,738	1,806	1,861	1,851	1,907	
UNL Grand Total ^{3/}	7,318	7,370	7,617	7,498	7,312	7,342	7,503	7,589	7,649	7,754	
Student Workers	3,430	4,245	4,546	3,973	3,836	3,833	3,691	3,837	4,025	4,168	

^{1/} Health Faculty were part of Other Faculty before 2000.

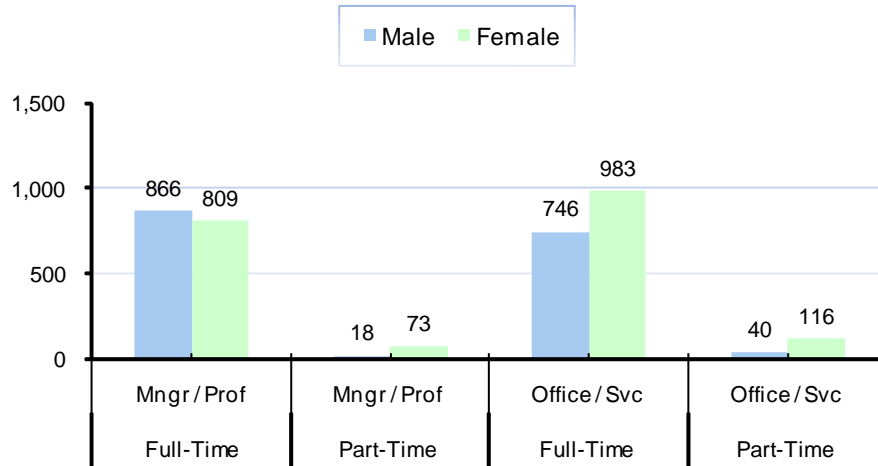
^{2/} Athletics Administrators were part of Administrators before 2000.

^{3/} Grand Total does not include Student Workers, Temporary Office-Service, Temporary Managerial/Professional or Casual Workers

Last Updated: February 2, 2009



**University of Nebraska - Lincoln Staff Profile
By Gender, Full & Part-time Status - Fall 2008**



UNL Staff Profile by Gender, Full & Part Time Status and Ethnicity (Regular Employees Only*)										
	Managerial / Professional				Office/Service				Total by Ethnicity	
	Full Time		Part Time		Full Time		Part Time			
	M	F	M	F	M	F	M	F	Count	Percentage
Asian or Pacific Islander	31	34	1	1	17	26	0	1	111	3.04%
Black - NonHispanic	24	12	1	2	20	23	2	3	87	2.38%
Hispanic	18	10	1	0	17	26	0	3	75	2.05%
Native Am or Alaskan	2	6	0	0	7	4	0	1	20	0.55%
Sub-total	75	62	3	3	61	79	2	8	293	8.03%
White - NonHispanic	791	747	15	70	685	904	38	108	3,358	91.97%
Total	866	809	18	73	746	983	40	116	3,651	100.00%

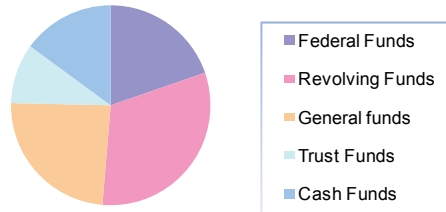
* Regular Employees are employed for more than six months and receive benefits. Does not include student workers, graduate assistants, on-call or ancillary employees.

Last Updated: February 5, 2009



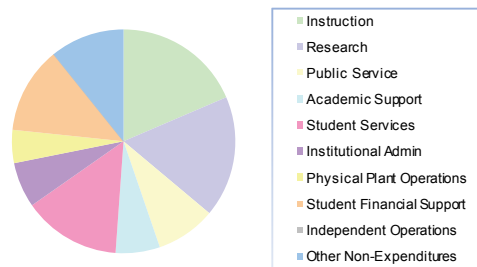
University of Nebraska-Lincoln Operating Budget

2008-09 Estimated Revenue



2008-2009 Estimated Revenue	
Federal Funds	189,201,774
Revolving Funds	303,703,776
General funds	230,607,030
Trust Funds	93,081,554
Cash Funds	143,267,545
Total Estimated Funding	959,861,679

2008-09 Budgeted Expenditures



2008-2009 Budgeted Expenditures	
Instruction	178,117,345
Research	168,162,116
Public Service	83,281,580
Academic Support	61,566,145
Student Services	135,914,303
Institutional Admin	62,736,838
Physical Plant Operations	46,058,649
Student Financial Support	120,241,648
Independent Operations	0
Other Non-Expenditures	103,783,055
Total Budgeted Expenditures	959,861,679

Last Updated: September 16, 2008



General Operating Budget Selected Numbers 5 Year Trend

Budgeted Revenue by Fund Source

	2004-2005	2005-2006	2006-2007	2007-2008	2008-2009
Auxillaries, Services and Revolving Funds	223,859,453	237,878,271	254,384,188	268,062,698	300,703,776
State Appropriations	189,424,127	205,302,523	209,911,981	221,626,195	230,607,030
Federal Funds	157,213,978	162,077,426	174,692,667	183,010,544	189,201,774
Tuition and Fees	112,295,194	105,133,514	115,298,470	125,332,845	146,267,545
Private Support	78,969,251	81,706,453	85,683,385	89,859,600	93,081,554
Total Budgeted Revenue	\$761,762,003	\$792,098,187	\$839,970,691	\$887,891,882	\$959,861,679

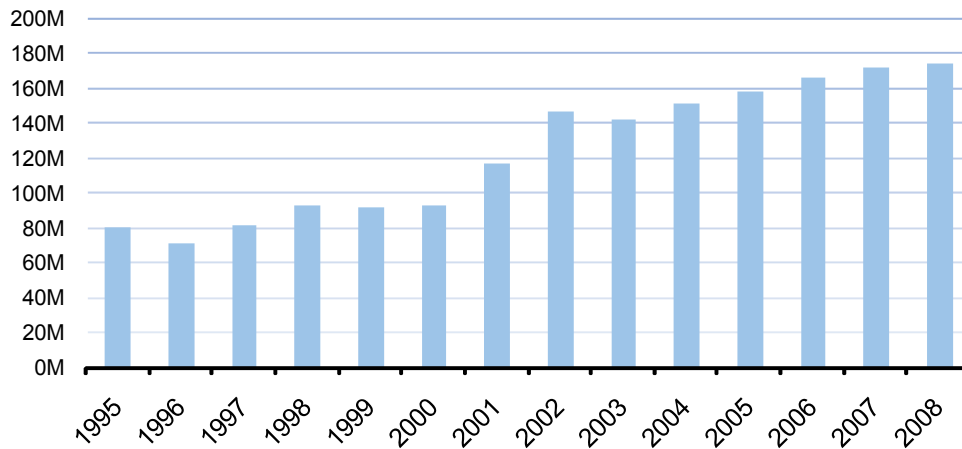
Budgeted Expenditures by Spending Category

	2004-2005	2005-2006	2006-2007	2007-2008	2008-2009
Instruction	153,586,117	150,074,211	156,628,351	164,253,178	178,117,345
Research	131,624,978	136,660,984	164,552,176	173,552,029	190,335,494
Student Services	110,164,598	119,301,855	126,150,262	126,068,768	135,914,303
Student Financial Aid	94,923,881	97,860,658	110,482,885	116,999,386	120,241,648
Auxiliary Operations	70,249,246	83,119,242	66,083,923	76,450,564	81,609,677
Public Service	68,027,965	69,456,610	74,635,193	79,955,658	83,281,580
Libraries / Academic Support	59,000,620	57,528,777	57,677,984	63,695,715	61,566,145
Administration	42,154,767	44,428,528	45,884,488	43,984,250	62,736,838
Physical Plant	32,029,831	33,667,322	37,875,429	42,932,334	46,058,649
Total Budgeted Expenditures	\$761,762,003	\$792,098,187	\$839,970,691	\$887,891,882	\$959,861,679

Last Updated: December 11, 2008



Trend of Grants & Contracts Total Amount Awarded



GRANTS AND CONTRACTS*

Fiscal Year	Number of Awards		Amount Awarded	
	2007	2008	2007	2008
Federal Government	371	388	\$98,544,112	\$97,614,144
State Government	231	213	20,264,179	16,139,038
Industry	442	447	12,167,892	8,922,965
Area & Local	27	42	844,881	1,678,754
Associations & Foundations	124	137	7,210,592	8,955,173
Universities	97	90	4,817,610	4,790,619
NU Foundation	2,103	2,279	26,409,661	34,621,464
Other	20	26	1,585,852	1,602,921
Total	3,415	3,622	\$171,844,779	\$174,325,078

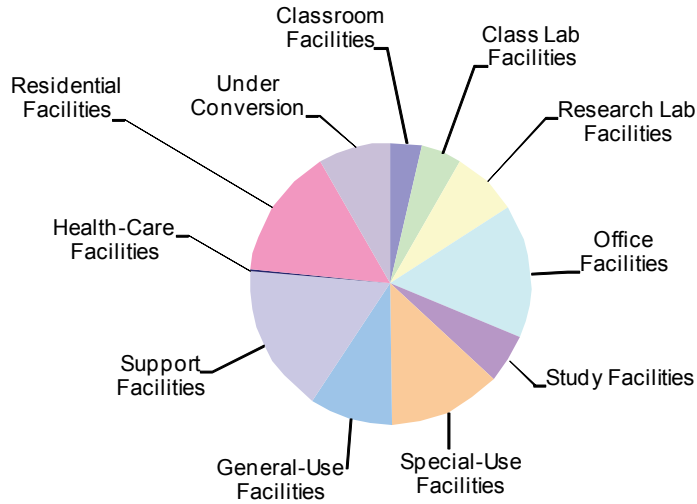
* Includes research, extension and education funding

Source: Research

Last Updated: December 11, 2008



Room Use Summary - June 30, 2008



Net Assignable Area for UNL City & East Campuses (Greater Nebraska Buildings are not included.)		
Room Use Category	City & East Campus Net Area (NASF)*	City & East Campus Net Area Percentage
Classroom Facilities **	261,536	3.6%
Class Laboratory Facilities **	342,933	4.7%
Research Lab Facilities	569,092	7.7%
Office Facilities	1,131,323	15.4%
Study Facilities	406,910	5.5%
Special-Use Facilities	956,095	13.0%
General-Use Facilities	694,591	9.4%
Support Facilities	1,250,601	17.0%
Health-Care Facilities	17,618	0.2%
Residential Facilities	1,117,750	15.2%
Under Conversion	604,071	8.2%
Total	7,352,520	100.0%

* NASF = Net Assignable Square Feet

** Includes teaching support space

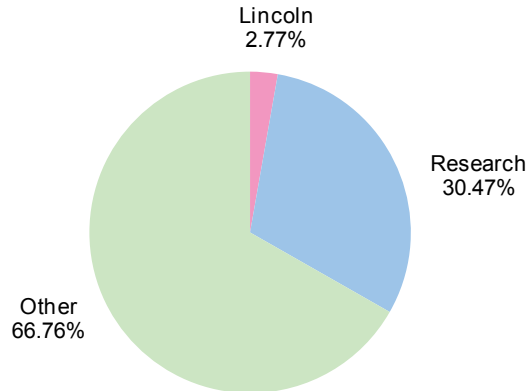
NOTE: Campus space that UNL does not own or use, such as the College of Dentistry, the Wick Alumni Center, the NETC Building, and buildings or space occupied solely by the USDA, is not included in this summary. Animal research spaces moved from Research Lab Facilities to Special Use Facilities per NCES Guidelines.

Source: Facilities Snapshot, June 30, 2008

Last Updated: September 19, 2008



UNL Land Inventory - June 30, 2008



UNL Land Inventory ¹		
Campus	Location	Acres
City Campus	Lincoln	274.43
East Campus	Lincoln	342.73
City & East Campuses Total		617.16
Off-Campus in Lincoln		573.74
Lincoln Total		1,190.90
Research & Extension Centers		
Ag Research & Dev Center	Mead	9,487.50
NE Research & Extension Ctr	Concord	479.00
Panhandle Research & Ext Ctr	Scottsbluff	547.62
South Central Research & Ext Ctr	Clay Center	640.00
West Central Research & Ext Ctr	North Platte	1,951.57
		13,105.69
Other Land ²	State-wide	28,709.33
UNL Total		43,005.92

¹ Includes land owned, leased & rented by UNL. Excludes Verner Hall property - 3.8 acres

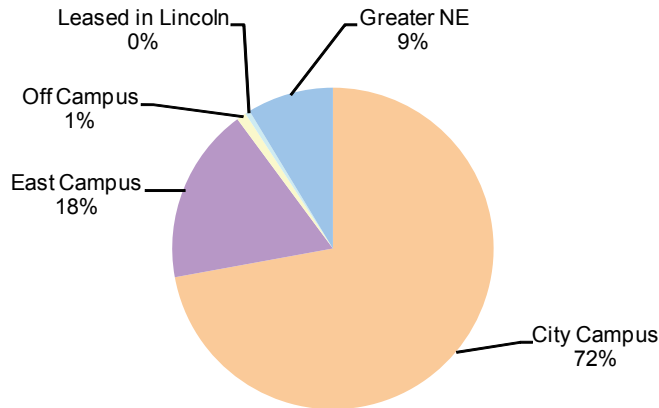
² Includes farms, ranches, prairies and other research sites such as Cedar Point, High Plains Ag Lab, and Gudmensen Sandhills Lab throughout the state.

Source: Property Management Snapshot June 30, 2008

Last Updated: September 22, 2008



Building Gross Square Footage - June 30, 2008



Gross Square Footage	
Campus	Feet
City Campus	9,961,860
East Campus	2,450,176
City & East Campuses Total	12,412,036
Off-Campus in Lincoln	133,079
Leased - Lincoln	66,331
Lincoln Total	12,611,446
Leased - Greater Nebraska	10,475
Greater Nebraska	1,188,606
Greater Nebraska Total	1,199,081
UNL Total	13,810,527

NOTE: Includes all UNL-maintained buildings, including those owned or operated by others, such as NETC, UNMC, Alumni, Foundation, and USDA.

Source: Facilities Snapshot, June 30, 2008

Last Updated: September 25, 2008



University of Nebraska Award for Outstanding Research and Creative Activity

The University of Nebraska Award for Outstanding Research and Creative Activity was established by the President in consultation with the Board of Regents in March, 1978. The program of awards was recommended by the Executive Graduate Council of the Graduate College to recognize research and creative activity of national/international significance conducted at the University of Nebraska. Each award carries a \$3,500 honorarium. Recipients (1 or 2 yearly) are selected by an eight-member awards committee appointed by the Dean of the Graduate College from among the six major academic divisions of the Graduate College. These awards are the highest accolade the University can bestow in recognition of a faculty member's scholarship, research and artistic achievements.

Year	UNL Recipient	Department
2009	Michael James	Textiles, Clothing & Design
2008	Vadim N Gladyshev	Biochemistry
2008	Fred Luthans	Management
2006	Ruma V Banerjee	Biochemistry
2006	Wheeler Winston Dixon	English
2005	Parks M Coble	History
2005	George Holmes	Physics & Astronomy
2005	Anthony F Starace	Physics & Astronomy
2004	Alan Kamil	Biological Sciences
2004	Susan Rosowski	English

University of Nebraska Award for Outstanding Teaching and Instructional Creativity

The University of Nebraska Outstanding Teaching and Instructional Creativity Award was established by the President in consultation with the Board of Regents. The process for making the awards was developed by an ad hoc university-wide committee with representatives from UNK, UNL, UNMC and UNL. Each award carries a \$3,500 honorarium. The purpose of the award is to recognize and honor faculty who have developed meritorious and sustained records of excellence in teaching and creativity related to teaching. Recipients are selected by a five-member awards committee appointed by the Provost.

Year	UNL Recipient	Department
2009	Donald Lee	Agronomy & Horticulture
2009	Calvin P. Garbin	Psychology
2006	Ruth M Heaton	Teaching, Learning & Teacher Education
2005	C William McLaughlin	Chemistry
2004	Joy Ritchie	English & Women's Studies
2003	Jim Lewis	Mathematics & Statistics

University of Nebraska Innovation, Development, and Engagement Award (IDEA)

Up to two university-wide Innovation, Development, and Engagement Awards may be presented each year to honor faculty members who have extended their academic expertise beyond the boundaries of the University in



ways that have enriched the broader community. These faculty members have worked with citizens, businesses, government and non-profit organizations, other educational institutions, communities, or regions to develop new ideas, projects, technologies, events, or businesses that resulted in new development that strengthened the region or community economically, culturally, environmentally, or governmentally.

Year	UNL Recipient	Department
2009	Donald Weeks	Biochemistry

University-Wide Departmental Teaching Award - University of Nebraska - Lincoln Recipients

One University-wide Departmental Teaching Award is presented in honor and recognition of a department/unit within the University of Nebraska that has made a unique and significant contribution to the teaching efforts of the University and which has outstanding esprit de corps in its dedication to the education of students at the undergraduate, graduate, or professional levels.

Year	UNL Recipient
2007	Agricultural Leadership, Education & Communication

For more information on University Wide Awards visit the Central Administration website at:
<http://www.uneb.edu/Awards/Index.html>

Faculty Awards

Annis Chaikin Sorensen Award Distinguished Teaching Award in the Arts and Humanities

Year	Recipient	Department
2009	Deborah Minter	English
2008	Nicholas P Spencer	English
2007	Elizabeth Ingraham	Art & Art History
2006	Frances W Kaye	English
2005	Adelaida López de Martínez	Modern Languages & Literatures

Student Foundation/Builders Award for Outstanding Advising

The Student Foundation/Builders Award for Outstanding Academic Advising, established in 1987, acknowledges faculty members who have demonstrated outstanding advising ability and who, by their service to UNL, have made a considerable contribution to the educational enrichment of the students of UNL. This award is funded by the UNL Student Foundation and the All University Fund.

Year	Recipient	Department
2009	Karen Fulton	School of Criminology & Criminal Justice
2008	Wendy L O'Connor	School of Biological Sciences
2007	Dennis D Schulte	Biological Systems Engineering
2006	Richard D Gaddie	General Studies
2005	Wayne G Jensen	Construction Management



Doc Elliott Award

The Doc Elliott Award has been presented since 1986 by the UNL Alumni Association to a retired faculty member "who has gone beyond traditional expectations and whose caring has made a difference in the lives of students and alumni."

Year	Recipient	Department
2008	Robert Hillestad	Textiles, Clothing & Design
2007	Morris Schneider	Industrial & Management Systems Engineering
2006	Dale L Gibbs	Architecture
2005	Wallace C Peterson	Economics
2004	R Neale Copple	Journalism & Mass Communications

Distinguished Educational Service Award

The purpose of this award is to recognize outstanding performance by a member of the faculty performing distinguished and continuing educational service other than resident instruction (i.e. Extended Education & Outreach and other educational services).

Year	Recipient	Department
2009	Sharon Skipton	Southeast Research & Extension Center
2008	Richard J Rasby	Animal Science
2007	Judy Diamond	University Museum
2006	Susan E Brown	Extension—Adams County
2005	Don C Adams	Animal Science

James V Griesen Exemplary Service to Students Award

Formerly, the Chancellor's Award for Exemplary Service to Students, established in 1986, acknowledges extraordinary and sustained performance by individuals who go beyond their assigned responsibilities in serving UNL's students. All UNL employees are eligible for nomination and nominations may be made by a UNL student, faculty member, staff member or administrator.

Year	Recipient	Department
2009	Charles Riedesel	Computer Science & Engineering
2008	Reshell D Ray	Student Involvement
2007	Susan K Voss	College of Agricultural Sciences & Natural Resources
2006	Donald Gregory	General Studies
2006	Barbara Wright-Chollet	Student Affairs
2005	Linda D Moody	Ag Leadership, Education & Communication



George Howard-Louise Pound Distinguished Career Award

Recognizes exceptional contributions to the University community through teaching, research, public service, administration or a combination of those activities.

Year	Recipient	Department
2009	James Lewis	Mathematics
2008	Herbert E Howe, Jr	Chancellor's Office
2007	James O'Hanlon	Teaching, Learning & Teacher Education
2006	Darrell W Nelson	Agricultural Research Division
2005	David B Brinkerhoff	Sociology & Academic Affairs

James A Lake Academic Freedom Award

The James A Lake Sr Academic Freedom Award was established in 1980 to pay tribute to those who have made exceptional contributions through their act(s) defending, supporting, and explaining the application and practice of the principles of academic freedom. "For Helping preserve the most basic freedom of all, the freedom to seek and communicate the truth."

Year	Recipient	Department
2006	A Dwayne Ball	Marketing
2004	Ann Mari May	Economics

Harold & Esther Edgerton Junior Faculty Award

A two-year award presented each year to honor an outstanding Junior Faculty member who has demonstrated creative research, extraordinary teaching abilities, and academic promise.

Year	Recipient	Department
2009	Marie S. Mitchell	Management
2008	Eileen Hebets	School of Biological Sciences
2007	Aaron Holz	Art & Art History
2006	Amit Saini	Marketing
2005	Victoria A O Smith	History & Ethnic Studies

Donald R and Mary Lee Swanson Award for Teaching Excellence

An award honoring teaching excellence in Teachers College.

Year	Recipient	Department
2009	Marilyn Grady	Educational Administration
2008	Margaret Macintyre Latta	Teaching, Learning & Teacher Education
2007	Rochelle Lene Dalla	Family & Consumer Sciences
2006	Richard J Bischoff	Family & Consumer Sciences
2005	Susan Wunder	Teaching, Learning & Teacher Education



The Academy of Distinguished Teachers

The Academy of Distinguished Teachers was established in 1995 to recognize and support the outstanding professors at UNL who are not only experts in their content area but have continuously demonstrated excellent pedagogy in teaching their students, in developing curricula, and in designing new modes of instructional delivery.

Year	Recipient	Department
2007	Amy Nelson Burnett	History
2006	Ronald J Hanson	Agricultural Economics
2005	Christin J Mamiya	Art & Art History
2005	Christine A Marvin	Special Education & Communication Disorders
2003	Calvin Garbin	Psychology
2003	Jim Lewis	Mathematics & Statistics

Distinguished Teaching Awards College of Agricultural Sciences & Natural Resources

Year	Recipient	Department
2009	James R. Brandle	School of Natural Resources
2008	Walter H Schacht	Rangeland Ecology & Management
2007	James E Partridge	Plant Pathology
2006	Leon G Higley	Entomology
2005	Mary M Beck	Animal Science

Distinguished Teaching Awards College of Architecture

Year	Recipient	Department
2009	Martin Despang	Architecture
2008	Hyun Tea Jung	Architecture
2007	William L Borner II	Architecture
2006	Katherine S Ankerson	Architecture
2005	Jeffrey L Day	Architecture

Distinguished Teaching Awards College of Arts & Sciences

Year	Recipient	Department
2009	Srikanth Iyengar	Mathematics
2009	Jason Kautz	Chemistry
2009	Simon Wood	Classics & Religious Studies
2009	Mikil Foss	Mathematics
2009	Jody Koening Kellas	Communication Studies



2009	Deborah Minter	English
2008	Marco Abel	English
2008	Alan C Christensen	School of Biological Sciences
2008	T Adrian George	Chemistry
2008	Mark A Griep	Chemistry
2008	Nicholas P Spencer	English
2007	Audrey L Atkin	Biological Sciences
2007	Robert Brooke	English
2007	Thomas C Gannon	English
2006	Mark Awakuni-Swetland	Anthropology & Geography
2006	Daniel W Leger	Psychology
2006	David R Pitts	Mathematics
2006	Leen-Kiat Soh	Computer Science & Engineering
2006	Rosalie A Torres Stone	Sociology
2005	David B Berkowitz	Chemistry
2005	James D LeSueur	History
2005	Adelaida López de Martínez	Modern Languages & Literatures
2005	Patrice McMahon	Political Science
2005	Amelia María de la Luz Montes	English & Ethnic Studies
2005	Vinodchandran Variyam	Computer Science & Engineering

Distinguished Teaching Awards College of Business Administration

Year	Recipient	Department
2009	Ravipreet Sohi	Marketing
2008	Ronald D Hampton	Marketing
2008	James R Schmidt	Economics
2007	Amit Saini	Marketing
2006	Dechun Wang	Accountancy
2005	Scott M Fuess, Jr	Economics

Distinguished Teaching Awards College of Education & Human Sciences

Year	Recipient	Department
2009	Karen Hux	Special Education & Communication Disorders
2009	Michelle Rupiper	Child, Youth and Family Studies
2009	Carol Easley	Textiles, Clothing & Design
2008	Edmund "Ted" Hamann	Teaching, Learning & Teacher Education
2008	Cody Stonewall Hollist	Child, Youth and Family Studies
2007	Cynthia J Cress	Special Education & Communication Disorders
2007	Catherine Huddleston-Casas	Family & Consumer Science
2006	Margaret Macintyre Latta	Teaching, Learning & Teacher Education
2006	Kathleen M Wilson	Teaching, Learning & Teacher Education
2005	Richard J Bischoff	Family & Consumer Science
2005	Miles T Bryant	Educational Administration
2005	William E Hanson	Educational Psychology

In Fall 2003 Human Resources & Family Sciences and Teachers Colleges merged to form the new College of

Institutional Research & Planning



Education & Human Sciences.

Distinguished Teaching Awards College of Engineering

Year	Recipient	Department
2009	Mustafa Gursoy	Electrical Engineering
2009	Shannon Bartelt-Hunt	Civil Engineering
2008	Jeffrey E Shield	Mechanical Engineering
2007	David M Admiraal	Civil Engineering
2007	Wayne G Jensen	Construction Management & Civil Engineering
2006	Bruce I Dvorak	Civil Engineering
2006	Lance Perez	Electrical Engineering
2005	Paul A Savory	Industrial & Management Systems Engineering

Distinguished Teaching Awards College of Fine and Performing Arts

Year	Recipient	Department
2009	Scott Anderson	School of Music
2008	Michael Hoff	Art & Art History
2007	Gretchen C Foley	School of Music
2006	Robert H Woody	School of Music
2005	Carolyn A Barber	School of Music

Distinguished Teaching Awards College of Law

Year	Recipient	Department
2008	William H Lyons	Law
2007	Richard E Moberly	Law
2006	Roger W Kirst	Law
2004	Susan Poser	Law

Distinguished Teaching Awards College of Journalism & Mass Communications

Year	Recipient	Department
2008	Joe Starita	News & Editorial
2007	John R Bender	News & Editorial
2006	Richard K Alloway, Jr	Broadcasting
2005	Jerry Renaud	Broadcasting

Institutional Research & Planning



Named Chairs and Professorships

Charles Bessey and Willa Cather Professorships

To recognize professors who have demonstrated distinguished scholarship and creativity.

Year	Recipient	College/Unit
2009	Sidnie White Crawford	Cather Professor of Classics & Religious Studies
2009	Patrick Dussault	Bessey Professor of Chemistry
2009	Evgeny Tsymbal	Bessey Professor of Physics & Astronomy
2008	Vadim N Gladyshev	Bessey Professor of Biochemistry
2008	Blair Siegfried	Bessey Professor of Entomology
2008	Richard L Wiener	Bessey Professor of Psychology and Law
2007	Yiqi Yang	Bessey Professor of Textiles, Clothing & Design and Biological Systems Engineering
2007	Dawn O Braithwaite	Cather Professor of Communication Studies
2007	Gerald Shapiro	Cather Professor of English
2007	Hendrik J Viljoen	Cather Professor of Chemical & Biomolecular Engineering
2006	David S Hage	Bessey Professor of Chemistry
2006	Allan C Peterson	Bessey Professor of Mathematics
2006	Anthony J Zera	Bessey Professor of Biological Sciences
2005	Vadim N Gladyshev	Bessey Professor of Biochemistry
2005	Marjorie A Langell	Bessey Professor of Chemistry
2005	J David Logan	Cather Professor of Mathematics

John E. Weaver and Aaron Douglas Professorships in Teaching Excellence

Award established in 2009 to recognize professors with a sustained record of teaching excellence and national visibility for instructional activities and practice.

Year	Recipient	College/Unit
2009	Helen A. Moore	Aaron Douglas Professor of Sociology
2009	James Lewis	Aaron Douglas Professor of Mathematics

Susan J. Rosowski Associate Professorships

Award established in 2009 to recognize associate professors who have a distinguished record of scholarship or creative activity and who show exceptional promise for the future.

Year	Recipient	College/Unit
2009	Viacheslav I. Adamchuk	Biological Systems Engineering
2009	Melissa J. Homestead	English and Women's & Gender Studies

W.W. Marshall Family University Professorship in Biotechnology

Recognizes faculty affiliated with the Center for Biotechnology who have shown an extraordinary level of scholarly or creative achievement and clear potential for continuing accomplishments.

Year	Recipient	College/Unit
2009	Andrew K. Benson	Food Science & Technology

Institutional Research & Planning



Staff Awards

Floyd S. Oldt Boss of the Year Award

This award, given by the University of Nebraska Office Personnel Association (UNOPA), was created to acknowledge exceptional full-time employees with management, administrative and/or supervisory responsibilities.

Year	Recipient	College/Unit
2008	Beverly Russell	Extended Education & Outreach
2007	Marjorie Kostelnik	College of Education & Human Sciences
2006	Richard J Hoffmann	College of Arts & Sciences
2005	Prem S Paul	Research & Graduate Studies
2004	David J Hansen	Psychology

Floyd S. Oldt Silver Pen Award

This award, given by the University of Nebraska Office Personnel Association (UNOPA), recognizes outstanding support staff employees engaged in secretarial, clerical or business work in the education system at UNL.

Year	Recipient	College/Unit
2009	Donna Boone	Technology Development
2009	Sandi Jones	Extended Education & Outreach
2008	Linda Thelen	Registration and Records
2008	Debra Underhill	Panhandle Research & Extension Ctr
2007	Deanne Lubken	College of Law
2007	Bethanie Nemecek	Distance Education Svcs
2006	Karen Shriner	Aerospace Studies
2005	Kimberly C Christiansen	INTSORMIL
2005	Nelvadine A Lienemann	Agricultural Research Division

Floyd S. Oldt Outstanding Staff Award

This award recognizes an office/service employee who exhibits sustained above-satisfactory service at UNL and shows demonstrated performance that has contributed to the mission of UNL.

Year	Recipient	College/Unit
2009	Pamela Hanks	Extended Education & Outreach
2008	Barbara Homer	School of Criminology & Criminal Justice
2007	Mary Klucas	College of Arts & Sciences
2007	Carol Wusk	College of Agricultural Sciences & Natural Resources
2006	Sandy Sterkel	Agricultural Economics
2005	Linda K Schreiner	Career Services



Rose Frolik Award

The Rose Frolik award was created to recognize a University of Nebraska Office Personnel Association (UNOPA) member who demonstrates the attributes of UNOPA's founder and first president, Rose Frolik. The nomination criteria include: leadership characteristics; professional characteristics and quest of professional growth; and personal characteristics.

Year	Recipient	College/Unit
2009	Karen Jackson	Agricultural Research Division
2008	Jeanne L Andelt	NE Forest Service
2006	Dora Dill	Agricultural Research Division
2005	Diane M Wasser	Agricultural Economics
2004	Susan Nichols	Extended Education & Outreach

Floyd Oldt Award

This award, given by UAAD, recognizes managerial/professional staff members who have demonstrated exceptional service, dedication, creativity and innovation to benefit UNL.

Year	Recipient	College/Unit
2009	Karen Fulton	Criminology & Criminal Justice
2008	James Fischer	Human Resources
2007	Julie Hagemeyer	Johnny Carson School of Theatre & Film
2006	Linda Major	Student Involvement
2005	Mark R Powell	Campus Recreation

Source: University Association for Administrative Development (UAAD)

Carl Donaldson Award for Excellence in Management

This award, given by the University Association for Administrative Development (UAAD), recognizes managerial/professional staff members who have demonstrated outstanding management skills.

Year	Recipient	College/Unit
2009	Jeanne Wicks	Sponsored Programs
2008	Jeffrey Bassford	Business & Finance
2007	Mary LaGrange	Accounting
2006	Vicki Highstreet	Campus Recreation
2005	David D DeFruiter	College of Business Administration

Outstanding Contribution to the Status of Women

Year	Recipient	College/Unit
2009	Christy Horn	ADA-504 Compliance Officer
2009	Society of Women Engineers	Student Organization
2008	Department of GeoSciences	College of Arts & Sciences
2008	Tamy L Burnett	Student, Graduate Studies
2007	Department of Sociology	College of Arts & Sciences



2007	Alex Clark	Student, Graduate Studies
2006	Tabethah Mack	Student, Graduate Studies
2006	University Police	UNL
2005	Pat Tetreault	Health Center

Source: Chancellor's Commission on the Status of Women

Fulfilling The Dream Award

For exemplary action in promoting the goals and visions of Dr Martin Luther King, Jr.

Year	Recipient	College/Unit
2009	Students United for Nebraska	Campus Community
2009	Peter Ferguson	Lincoln Community
2008	Gwendolyn Combs	Management Department
2007	Christy A Horn	Center for Instructional Innovation
2007	Oscar Harriott	Lincoln Community
2006	Amber Hunter	Admissions
2006	Larry Williams	Lincoln Community
2005	Thomas Christie	Lincoln Community

Outstanding Contribution to the Gay, Lesbian, Bisexual and Transgender Community

Awarded by the Committee on Gay, Lesbian, Bisexual and Transgender Concerns

Year	Recipient	College / Unit
2009	William Waters	OASIS/The Culture Center
2009	Heath Harding	Student, Graduate Studies
2008	Debbie Krahmer	Libraries
2008	Amanda L Garrett	Student, Graduate Studies
2008	Greg T Gifford	Student, Graduate Studies
2007	Allen Ratliff	Student, College of Arts & Sciences
2007	Jan Deeds	Student Involvement
2007	Reverend Don Hanway	Lincoln Community
2006	Debra Anne Hope	Psychology
2006	Spectrum/QSA Transition Team	UNL
2005	Joy S Ritchie	English

Source: Office of the Vice Chancellor for Academic Affairs

Last Updated: July 8, 2009



Academic Program. Instructional program leading toward an associate's, bachelor's, master's, doctor's, or first-professional degree or resulting in credits that can be applied to one of these degrees.

Academic Support (Expenditures). Expenditures for the support services that are an integral part of the institution's primary mission of instruction, research and public service. Includes expenditures for libraries, museums, galleries, audiovisual services, academic computing support, ancillary support, academic administration, personnel development, and course and curriculum development.

Accrediting Agencies. Agencies that establish operating standards for educational or professional institutions and programs, determine the extent to which the standards are met, and publicly announce their findings.

Administrative Site. The campus with the ultimate academic, administrative and budgetary authority for an academic program.

Agency Funds. Agency funds include funds held by the University as a custodian or fiscal agent for others.

American Indian. A person having origins in any of the original peoples of North America or who maintains cultural identification through tribal affiliation or community recognition. (Definition prescribed by National Center for Education Statistics for use on the Integrated Postsecondary Education Data System reports.)

Asian. A person having origins in any of the original peoples of the Far East, Southeast Asia, the Indian Subcontinent, or Pacific Islands. This includes people from China, Japan, Korea, the Philippine Islands, Samoa, India, and Vietnam. (Definition prescribed by National Center for Education Statistics for use on the Integrated Postsecondary Education Data System reports.)

Association of American Universities (AAU). The Association of American Universities is an organizational group of 62 public and private institutions with significant graduate and research programs. The Association was founded in 1900 by Harvard, Columbia, California, and Johns Hopkins in Chicago. The University of Nebraska-Lincoln has been a member of the Association of American Universities since 1913; membership is a recognition of high institutional quality on a national basis.

Auxiliary Enterprises (Operations). Essentially self-supporting operations of the institution that exist to furnish a service to students, faculty or staff, and that charge a fee that is directly related to, although not necessarily equal to, the cost of the service. Examples are residence halls, food services, student health services, and the university bookstore.

Black, Non-Hispanic. A person having origins in any of the black racial groups of Africa (except those of Hispanic origin). (Definition prescribed by National Center for Education Statistics for use on the Integrated Postsecondary Education Data System reports.)

Budget. An expenditure plan for a given time period, usually a fiscal year, which includes an anticipated means of financing those expenditures.

College Work-Study Program (CWS). (Higher Education Act of 1965, as amended, Title IV, Part C; Public Laws 89-329, 92-318, 94-482, et.al; 42 USC 2751-27566.) Provides part-time employment to eligible postsecondary students to help meet educational expenses. This program provides grants to institutions for partial reimbursement of wages paid to students.



Comparison Institutions (Peer). Comparisons in higher education can be made in many topic areas, jurisdictional levels, and degrees of detail. Members of an institutional comparison group are selected primarily for their commonality and, in some instances, for specific differences. Although there are definitional differences, the terms comparison group and peer group are often used interchangeably.

Cooperative Extension. The Smith-Lever Act of Congress, passed in 1914, established a legal and fiscal basis for establishing cooperative extension work as the arm of the land-grant college system to provide educational programs in agriculture, home economics, and related subjects for persons not enrolled in a land-grant college. Enabling legislation passed by the Nebraska Legislature in 1915 authorized extension work to be carried on in the counties in cooperation with the University of Nebraska and the U.S. Department of Agriculture.

CorpNet. Nebraska CorpNet is a corporate training network that utilizes various types of technology to deliver University of Nebraska-Lincoln courses directly to workplaces in Lincoln and Omaha. CorpNet programming is made available at public locations across the state via satellite telecommunications.

Credit Hour. A unit of measure representing an hour (50 minutes) of instruction over a 15 week period in a semester. It is applied toward the total number of hours needed for completing the requirements of a degree, certificate, or other formal award.

Degree. An award conferred by a college, university, or other postsecondary educational institution as official recognition for the successful completion of a program of studies.

Delivery Site. The campus on which students physically attend classes to receive instruction from an academic program.

Dependent. Students whose financial aid status is such that they have access to parental support for paying for their postsecondary education.

Extended Education & Outreach: Extended Education & Outreach, in partnership with academic colleges, provides high quality distance education opportunities to the citizens of Nebraska and the world, so that learners can attain degrees or enhance their career/professional development regardless of location.

- **Department of Distance Education Services:** The Department of Distance Education Services extends the services of the campus to the distance learner. The department serves in a consulting role with academic units in supporting the educational needs of distance learners enrolled in any of the 13 graduate programs through UNL.
- **College Independent Study:** College Independent Study partners with 7 academic colleges to offers 86 undergraduate credit and noncredit courses from 31 academic departments. Students can enroll anytime and complete a course in as little as five weeks or take up to one year.
- **Independent Study High School:** Independent Study High School offers self-paced independent study courses for grades 9 through 12. Students can choose from more than 160 online and print courses to supplement their local curriculum or earn an accredited diploma. Nebraska's High School partners with schools, school districts, learning organizations, the Nebraska Department of Education and UNL academic units to deliver curriculum around the world.
- **Summer Reading:** Summer Reading program allows UNL faculty to offer additional summer courses and provides undergraduate students with the opportunity to earn credits without having to be on campus.
- **Fire Protection Technology:** Fire Protection Technology is an associate degree program awarded by the College of Engineering and Technology. Courses are offered on a three-year-cycle on the University of Nebraska at Omaha campus.
- **Instructional Design & Development:** The Department of Instructional Design & Development supports faculty engaged in distance education, helping identify teaching strategies that are effective in a technology environment. Instructional designers experienced in teaching, distance education, and instructional tech-



nologies consult on course design, as well as provide individualized hands-on development and production support.

Faculty. Includes both full-time and part-time faculty and chairpersons employed by UNL as of the fall census date (does not include NCTA faculty). "Other," "Equivalent," "Health" and "Research/Clinical" faculty are excluded.

Federal PLUS Loans. Federal PLUS loans are for parents who want to borrow to help pay for their children's education. These loans provide additional funds for education expenses and, like Federal Stafford Loans, are made by a lender such as a bank, credit union, or savings and loan association.

Federal Stafford Loans (formerly Guaranteed Student Loans). These are low-interest loans made to students attending school at least half-time. Loans are made by a lender such as a bank, credit union, or savings and loan association. Sometimes a school acts as a lender. These loans are insured by the guaranty agency in each state and reinsured by the federal government. Students must repay this loan.

Federal Supplemental Loans for Students (SLS). These are loans for student borrowers which provide additional funds for education expenses and, like Federal Stafford Loans, are made by a lender such as a bank, credit union, or savings and loan association.

Field Course. Credit-bearing course conducted at an off-campus location. Instructor is physically present at the off-campus site.

Financial Aid Package. Generally, one or more types of aid are combined to complete a student's financial aid package. For example, a student may be awarded one-half gift aid (grants or scholarships) and one-half self-help (loans or Federal College Work-Study). When students receive scholarships from outside agencies or through the University, these scholarships are included as part of the student's total aid package.

First-Professional. Students enrolled in the University of Nebraska-Lincoln College of Law, College of Architecture and College of Education and Human Sciences.

Fiscal Year. For the State of Nebraska the fiscal year begins July 1st and ends the following June 30th. The U.S. federal government's fiscal year begins October 1st and ends the following September 30th. Most federal grants are awarded using the federal fiscal year cycle.

Full-Time Student. Undergraduate and Law students enrolled for 12 or more credit hours. Graduate, College of Education and Human Sciences and College of Architecture students enrolled for 9 or more credit hours.

Government Grants and Contracts. Revenues received from governmental agencies that are for specific research projects or other types of programs. Examples are research projects, training programs, and similar activities for which amounts are received or expenditures are reimbursable under the terms of a government grant or contract. Includes Pell Grants.

Grant (Student Financial Aid). Awards which are based on financial need and do not have to be repaid.

Guaranteed Student Loan. See Federal Stafford Loan.

Higher Education Price Index (HEPI). The HEPI reports inflation/deflation for a national average college and university budget and is generally applicable to all higher education institutions. HEPI accounts for price increases/decreases in the goods and services purchased by colleges over time.

Hispanic. A person of Mexican, Puerto Rican, Cuban, Central or South American or other Spanish culture or origin, regardless of race. (Definition prescribed by National Center for Education Statistics for use on the Inte-



grated Postsecondary Education Data System reports.)

Independent. A student is automatically self-supporting if:

- they are at least 24 years of age by December 31 of the award year (e.g., by December 31, 1995, for 1995-96);
- they are a veteran of the United States Armed Forces;
- they are an orphan or ward of the court;
- they have legal dependents of their own other than their spouse;
- they are married prior to filing the FAFSA (Free Application for Federal Student Aid)
- they will be a graduate or law student during the academic year; or
- they are determined to be so by University of Nebraska-Lincoln financial aid administrators.

Institutional Research. Institutional research is research conducted within an institution of higher education to provide information which supports institutional planning, policy formulation, and decision making.

Instruction Expenditures. Expenditures of the colleges, schools, departments, and other instructional divisions of the institution and expenditures for departmental research and public service that are not separately budgeted. Includes expenditures for credit and noncredit activities. Excludes expenditures for academic administration where the primary function is administration (e.g., academic deans). Also includes general academic instruction, occupational and vocational instruction, special session instruction, community education, preparatory and adult basic education, and remedial and tutorial instruction conducted by the teaching faculty for the institution's students.

Integrated Postsecondary Education Data System (IPEDS). IPEDS is the core postsecondary education data collection program in the U.S. Department of Education's National Center for Education Statistics (NCES). It was designed to help NCES meet its mandate to report full and complete statistics on the condition of postsecondary education in the United States. It is a single, comprehensive data collection system developed to encompass all institutions and organizations whose primary purpose is to provide postsecondary education. The IPEDS system is built around a series of interrelated surveys to collect institution-level data in such areas as enrollment, program completions, faculty and staff, and financing. IPEDS supersedes the Higher Education General Information Survey (HEGIS), a similar set of surveys that collected data from 1966 to 1986.

Land Grant/State University. The term "land grant" is derived from the enactment in 1862 of the Morrill Act, which specified that grants of public lands should be made to those states agreeing to the provisions of the Act. Monies derived from the sale of the lands were to be invested:

so that moneys so invested shall constitute a perpetual fund, the capital of which shall remain forever undiminished. . . [with an exception allowed later in the bill that no more than 10% of the capital funds realized could be expended for the purpose of lands for sites for experimental farms] and the interest of which shall be inviolably appropriated, by each State which may take and claim the benefit of this act, to the endowment, support, and maintenance of at least one college where the leading object shall be, without excluding other scientific and classical studies, and including military tactics to teach such branches of learning as are related to agriculture and the mechanic arts, in such manner as the legislatures of the States may respectively prescribe, in order to promote the liberal and practical education of the industrial classes in the several pursuits and professions in life.

In 1864, additional grants of land were made available to provide for "state universities" which were to have similar purposes without the suggestion of "practical" application of branches of learning.

Managerial/Professional Employee. One whose duties are primarily managerial or professional and who is exempt from the overtime provisions of the Fair Labor Standards Act. An exception to this exemption may be some technical and/or part-time employees.

NCES. The National Center for Education Statistics, which is the statistical branch of the Office of Educational Research and Improvement, a principal operating component of the U.S. Department of Education.



Non-Resident Alien. A person who is not a citizen or national of the United States and who is in this country on a visa or temporary basis and does not have the right to remain indefinitely.

Non-Resident Student. A student who is not a legal resident of the state in which he/she attends school. (See Resident Student).

Nonstate-Aided Budget. The nonstate-aided budget supports operations that are auxiliary to educational and general operations or are a result of grants and contracts awarded to the University. The nonstate-aided budget is funded from revolving funds, federal funds and trust funds (grants, contracts, non-federal aid programs, maintenance of student loan programs, endowment funds, and agency funds).

Office/Service Employee. One who is paid hourly and who is subject to the state overtime law and the Fair Labor Standards Act.

Part-Time Student. Undergraduate and Law students enrolled for less than 12 credit hours. Graduate, College of Education and Human Sciences and College of Architecture students enrolled for less than 9 credit hours.

Peer Group. See Comparison Institution.

Pell Grant Program. (Higher Education Act of 1965, Title IV, Part A, Subpart I, as amended.) Provides eligible undergraduate postsecondary students with demonstrated financial need with grant assistance to help meet education expenses.

Perkins Loan Program (formerly National Direct Student Loans [NDSL]). (Higher Education Act of 1965, Title IV, Part E, as amended, Public Laws 89-329, 92-318, et. al; 20 USC 1087aa-1087bb.) Provides low interest loans to eligible postsecondary students (undergraduate, graduate, or professional students) with demonstrated financial need to help meet educational expenses.

PLUS. See Federal PLUS Loans.

Program (Academic). A combination of courses and related activities organized for the attainment of broad educational objectives as described by the institution.

Public Service Expenditures. Funds budgeted specifically for public service and expended for activities established primarily to provide noninstructional services beneficial to groups external to the institution. Examples are seminars and projects provided to particular sectors of the community and expenditures for community services and cooperative extension services.

Research (Academic). Three types of purposes guide research and the other creative and scholarly efforts of colleges and universities.

- Instructional Research: This research contributes to the accomplishment of the objectives of instructional programs. Faculty research creates an environment of inquiry which is conducive to learning; students learn by participating in research; research activities provide stimulation to faculty which carries over into classroom teaching; and research produces knowledge to be taught.
- Basic Research: The purpose of basic research is the production of knowledge per se.
- Applied Research: Some research efforts in colleges and universities have specific missions directed at community and social problems, thereby tying these efforts to the institution's external service function. The agricultural experiment stations of the land-grant universities are specific illustrations of situations in which research is directed toward the solution of specific problems more than toward the production of knowledge per se.

Research Expenditures. Funds expended for activities specifically organized to produce research outcomes and commissioned by an agency either external to the institution or separately budgeted by an organizational



unit within the institution.

Research Initiative. The Nebraska Research Initiative (NRI) was established by Governor Kay Orr and the State Legislature in 1988. NRI funds are budgeted permanently to the Central Administration of the University of Nebraska and are allocated each year to the individual campuses for targeted research activities.

Resident Student. A student who is a resident of the state in which he/she attends school. The University of Nebraska has been authorized to develop regulations and make determinations regarding Nebraska residency for tuition purposes. These regulations provide the bases upon which university staff determine whether an individual qualifies as a Nebraska resident for tuition purposes. For specifics, contact the Office of Admissions.

Restricted Current Funds. Those funds available for financing operations but which are limited by donors or other external agencies to specific purposes, programs, departments, or schools.

Revolving Funds. The most common use of the term "revolving fund" is in reference to the revenues generated from operations which provide services on a user fee basis. These operations are usually separate and self-supporting. Examples are stores & service operations, residence halls, unions, health center, recreation center, vending and parking. These service areas are generally in the "non-state aided" budget, however the "state aided" budget also includes some "revolving" funded operations. Examples of state-aided revolving fund operations include cost centers set up for: lab fee assessments; high school and college extension classes; livestock and commodity sales generated as a byproduct of instructional, research and extension activities.

Satellite Course. Credit-bearing course conducted at an off-campus location. Usually involves situation where all students are present in one off-campus location but instruction is offered via telecommunications.

Scholarships. Awards based either on academic merit alone or on academic merit and financial need. They do not have to be repaid. Scholarships include such awards as grants-in-aid, training stipends, tuition and fee waivers and prizes.

Sponsored Programs. Programs funded from an outside organization or individual which contain provisions or restrictions on the use of the funds.

State-Aided Budget. The state-aided budget supports the educational and general operations of the University and is funded from state general fund appropriations and University generated cash funds (tuition, fees, etc.). Other funds that support the state-aided budget, to a lesser extent, include federal funds (Agricultural Research Division and Cooperative Extension) and revolving funds.

Student Credit Hours. The academic value of a course multiplied times the number of students registered for that course. If 50 students register for a 3 CH course, that class will produce 150 (3 CH x 50 students) student credit hours (SCH's).

Student Fees. See Tuition and Required Fees.

Student Headcount Enrollment. See Unduplicated Headcount.

Student Level. Student class level is self-reported and based on the number of credit hours passed. Credit hours transferred from other postsecondary institutions are included in this determination. The University of Nebraska-Lincoln defines the following class levels:

- Freshmen - have earned less than 27 undergraduate semester credit hours
- Sophomores - have earned from 27 to 52 undergraduate semester credit hours
- Juniors - have earned from 53 to 88 undergraduate semester credit hours
- Seniors - have earned at least 89 undergraduate semester credit hours
- Unclassified - have students taking courses toward a degree or other formal award who have not been



classified by academic level. This category could include a transfer student whose earned credits have not been determined.

Student Loans. Available to both the student and student's parents at low interest rates (5%-11%). Student loans are considered financial aid because of special low-interest rates and because they are established by the federal government. Repayment of most student loans does not begin until after graduation or when the student drops below half-time enrollment.

Student Services. Admissions, registration for classes, and activities which primarily contribute to students' emotional and physical well-being and to their intellectual, cultural, and social development outside the classroom. Examples are career guidance, counseling, financial aid administration, and student health services.

Supplemental Loans for Students. See Federal Supplemental Loans for Students (SLS).

Supplementary Educational Opportunity Grants (SEOG). (Higher Education Act of 1965, as amended, Title IV, Part A, Subpoint 2, Public Laws 89-329-92-318, 94-482, et al; 20 USC 10706-10706-3.) Provides eligible undergraduate postsecondary students with demonstrated financial need with grant assistance to help meet educational expenses. The grants are made directly to institutions of higher education, which select students for the awards.

Tenure. Faculty with continuous appointments.

Tenure-Track. Faculty with specific-term appointments or faculty with tenure awarded for a future date.

Tuition and Required Fees. Tuition is the amount of money charged to students for instructional services. Tuition may be charged per term per course, or per credit. Required fees are those fixed sums charged to students for items not covered by tuition.

Unclassified Student. A student taking courses creditable toward a degree or other formal award who cannot be classified by academic level. For example, this could include a transfer student whose earned credits have not yet been determined.

Unduplicated Headcount. The sum of students enrolled for credit with each student counted only once during the reporting period, regardless of when the student enrolled.

Unrestricted Current Funds. All funds, including institutional funds, received for which no stipulation was made by the donor or other external agency as to the purpose for which the funds should be expended.

White. A person having origins in any of the original peoples of Europe, North Africa, or the Middle East. (Definition prescribed by National Center for Education Statistics for use on the Integrated Postsecondary Education Data System reports.)

Last Updated: June 28, 2004